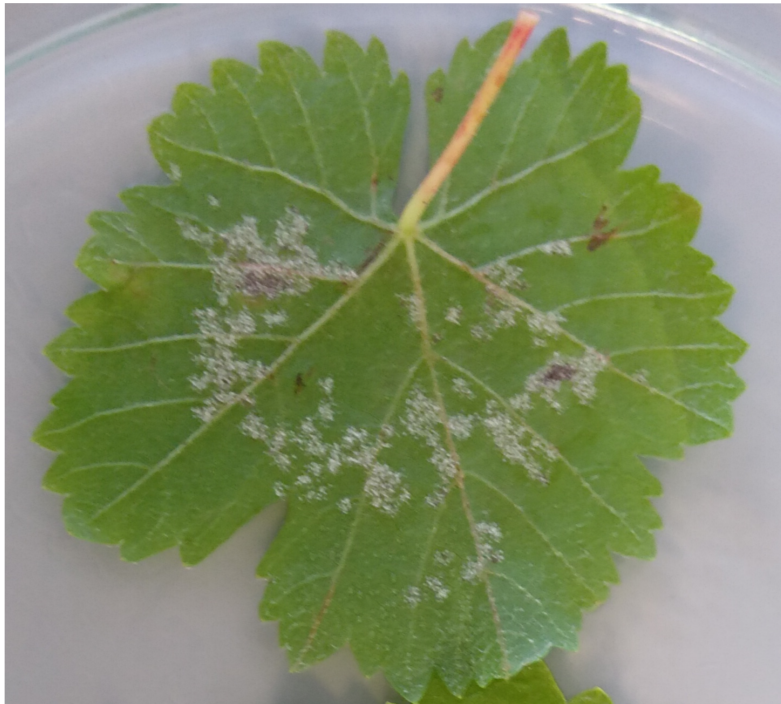
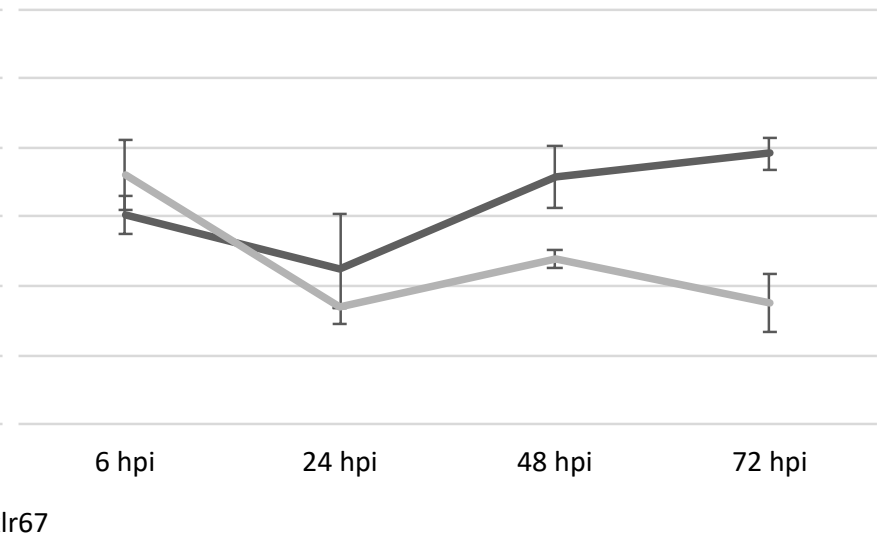
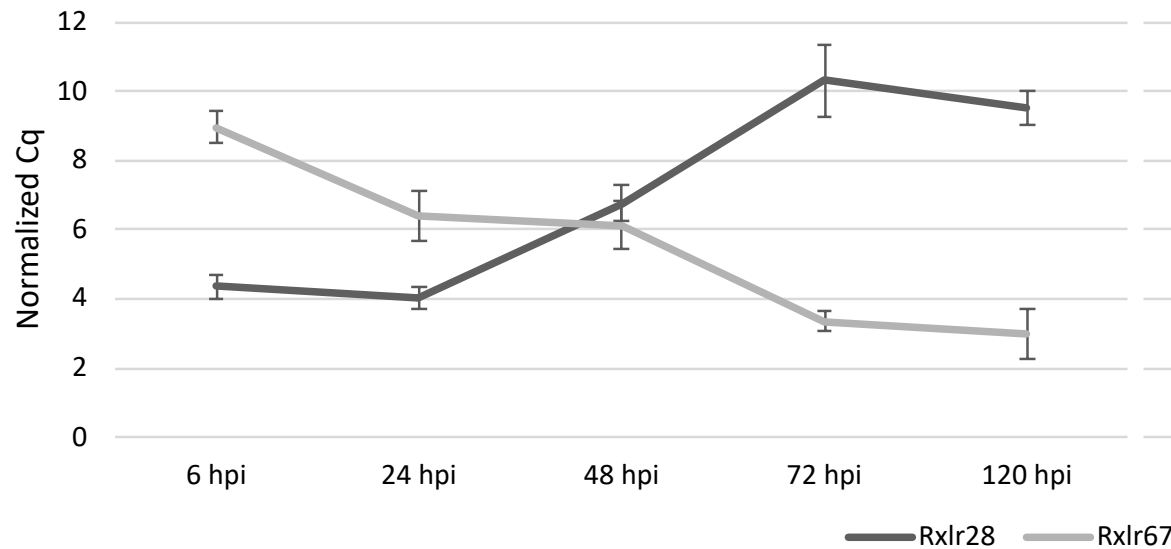


A'Trincadeira'-*P. viticola* interaction**B**'Regent'-*P. viticola* interaction

Supplementary Figure S1. Representative images of leaf symptoms caused by downy mildew disease and normalized quantification cycle (Cq) values for *P. viticola* effectors *PvRxLR28* (dark grey line) and *PvRxLR67* (light grey line) in 'Trincadeira'-*P. viticola* (A) and 'Regent'-*P. viticola* (B) interactions. No gene expression was detected in mock-inoculated controls. A low Cq corresponds to a high amount of target mRNA whereas a higher Cq corresponds to a lower amount of target mRNA.