



Cellular Regulation of Amyloid Formation in Aging and Disease

Esther Stroo, Mandy Koopman, Ellen A. A. Nollen* and Alejandro Mata-Cabana*

European Research Institute for the Biology of Aging, University of Groningen, University Medical Center Groningen, Groningen, Netherlands

OPEN ACCESS

Edited by:

Cintia Roodveldt,
Andalusian Molecular Biology and
Regenerative Medicine Centre
(CABIMER) - CSIC, Spain

Reviewed by:

Mauro Manno,
National Research Council, Italy
Eva Zerovnik,
Jožef Stefan Institute, Slovenia

*Correspondence:

Ellen A. Nollen
e.a.a.nollen@umcg.nl
Alejandro Mata-Cabana
matacabana@gmail.com

Specialty section:

This article was submitted to
Neurodegeneration,
a section of the journal
Frontiers in Neuroscience

Received: 25 November 2016

Accepted: 30 January 2017

Published: 14 February 2017

Citation:

Stroo E, Koopman M, Nollen EA and
Mata-Cabana A (2017) Cellular
Regulation of Amyloid Formation in
Aging and Disease.
Front. Neurosci. 11:64.
doi: 10.3389/fnins.2017.00064

As the population is aging, the incidence of age-related neurodegenerative diseases, such as Alzheimer and Parkinson disease, is growing. The pathology of neurodegenerative diseases is characterized by the presence of protein aggregates of disease specific proteins in the brain of patients. Under certain conditions these disease proteins can undergo structural rearrangements resulting in misfolded proteins that can lead to the formation of aggregates with a fibrillar amyloid-like structure. Cells have different mechanisms to deal with this protein aggregation, where the molecular chaperone machinery constitutes the first line of defense against misfolded proteins. Proteins that cannot be refolded are subjected to degradation and compartmentalization processes. Amyloid formation has traditionally been described as responsible for the proteotoxicity associated with different neurodegenerative disorders. Several mechanisms have been suggested to explain such toxicity, including the sequestration of key proteins and the overload of the protein quality control system. Here, we review different aspects of the involvement of amyloid-forming proteins in disease, mechanisms of toxicity, structural features, and biological functions of amyloids, as well as the cellular mechanisms that modulate and regulate protein aggregation, including the presence of enhancers and suppressors of aggregation, and how aging impacts the functioning of these mechanisms, with special attention to the molecular chaperones.

Keywords: neurodegeneration, protein aggregation, amyloid, protein quality control, SERF

INTRODUCTION

The process of aging is defined as a time-dependent functional decline eventually resulting in an increased vulnerability to death (reviewed in López-Otín et al., 2013). Gaining knowledge about the molecular events that occur in the cell during aging is important in order to understand the disease process of age-related diseases. Some neurodegenerative diseases, including Alzheimer (AD), Parkinson (PD), and Huntington disease (HD), share as hallmark the appearance of protein aggregates with fibrillary amyloid-like structures in the brain. These amyloid fibrils are composed of aggregation-prone proteins, such as mutant huntingtin (HTT) in Huntington disease, α -synuclein in Parkinson disease, and amyloid-beta ($A\beta$) in Alzheimer disease (Scherzinger et al., 1999; Chiti and Dobson, 2006; Goedert and Spillantini, 2006; See **Table 1** for a list of aggregation-prone proteins involved in neurodegenerative diseases). The role of these aggregates in disease is not fully understood: the most prevalent hypothesis is that aggregation intermediates—single or complexes of aggregation-prone proteins—are toxic to cells and that the aggregation process represents a cellular protection mechanism against these toxic intermediates (Lansbury and Lashuel, 2006; Hartl and Hayer-Hartl, 2009).

TABLE 1 | Neurodegenerative diseases associated with protein aggregation.

	Identified disease genes	Protein that aggregates	Location of aggregates	Affected brain region
Alzheimer disease (AD)	<i>APP</i> (Chartier-Harlin et al., 1991; Goate et al., 1991; Murrell et al., 1991) <i>PS1</i> (Sherrington et al., 1995) <i>PS2</i> (Levy-Lahad et al., 1995; Rogaev, 1995)	Amyloid-beta, Tau	Extracellular Intracellular	Cortex and Hippocampus
Huntington disease (HD)	<i>HD</i> (Hess et al., 2016)	Huntingtin	Intracellular	Striatum
Parkinson disease (PD)	<i>SNCA</i> (Polymeropoulos et al., 1997) <i>Parkin</i> (Kitada et al., 1998) <i>PINK1</i> (Valente et al., 2001) <i>DJ1</i> (Bonifati et al., 2003) <i>LRRK</i> (Zimprich et al., 2004) e.a.	Alpha synuclein	Intracellular	Substantia Nigra
Dementia with Lewy bodies (DLB)	<i>SNCA</i> (Higuchi et al., 1998) <i>SNCB</i> (Ohtake et al., 2004)	Alpha synuclein	Intracellular	Cortex and hippocampus
Frontotemporal dementia (FTA)	<i>MAPT</i> (Wilhelmsen et al., 1994)	Tau	Intracellular	Frontal and temporal cortex
Prion disease (PrD)	<i>PRNP</i> (Oesch et al., 1985)	Prion protein	Extracellular	Brain and spinal cord
Amyotrophic lateral sclerosis (ALS)	<i>SOD1</i> (Rosen et al., 1993) <i>FUS</i> (Kwiatkowski et al., 2009) <i>C9orf72</i> (DeJesus-Hernandez et al., 2011; Renton et al., 2011) e.a.	SOD, FUS, TDP-43	Intracellular	Upper and lower Motor neurons

The familial forms of many neurodegenerative diseases appear to involve toxic gain-of-function mutations in disease-specific proteins that increase their misfolding and aggregation properties. The resulting misbalance in protein homeostasis can speed up the process of amyloid formation, thereby often provoking an early-onset of several neurodegenerative disorders.

In this review, we address the involvement of aggregation-prone proteins in the development of different age-related disease. We describe how different cellular regulators impact on protein aggregation and how they are affected by aging, with special focus on the molecular chaperone machinery and other pathways involved in maintaining protein homeostasis. We also discuss different mechanisms that may underlie the toxicity of

amyloid-forming proteins and we highlight some new findings in the amyloid field.

CELLULAR REGULATORS OF PROTEIN AGGREGATION

Protein Quality Control

Cells have a protein quality control (PQC) system to maintain protein homeostasis. Preserving protein homeostasis involves the coordinated action of several pathways that regulate biogenesis, stabilization, correct folding, trafficking, and degradation of proteins, with the overall goal to prevent the accumulation of misfolded proteins and to maintain the integrity of the proteome.

Chaperones

One of the cellular mechanisms that copes with misfolded proteins is the chaperone machinery. A molecular chaperone is defined as a protein that interacts with, stabilizes or assists another protein to gain its native and functionally active conformation without being present in the final structure (Ellis, 1987). Many members of the chaperone protein family are referred to as heat shock proteins (HSP), as they are upregulated during stress conditions such as heat shock (Ellis and Hartl, 1999; Kim et al., 2013). In addition to folding of misfolded proteins, molecular chaperones are also involved in a wide range of biological processes such as the folding of newly

Abbreviations: A β , amyloid-beta; AD, Alzheimer disease; ALS, amyotrophic lateral sclerosis; APP, amyloid precursor protein; APR, aggregation prone region; ATTR, transthyretin amyloidosis; CMA, chaperone mediated autophagy; CJD, Creutzfeldt-Jakob disease; CPEB, cytoplasmic polyadenylation element-binding protein; DLB, dementia with Lewy bodies; ER, endoplasmic reticulum; FTD, frontal temporal dementia; HD, Huntington disease; HSF-1, heat shock factor 1; HSP, heat shock protein; HTT, huntingtin; IAPP, islet amyloid polypeptide; IIS, insulin/insulin-like growth factor 1 signaling; IPOD, insoluble protein deposit; JUNQ, juxtannuclear quality control compartments; LLPS, liquid-liquid phase separation; MOAG-4, modifier of aggregation 4; NPC, nuclear pore complex; PD, Parkinson disease; PolyQ, polyglutamine; PQC, protein quality control; PrD, prion disease; PrP, prion protein; RNP, ribonucleoprotein; SAA, serum amyloid protein; SERF, small EDKR rich factor; UPR, unfolded protein response; UPS, ubiquitin-proteasome system.

synthesized proteins, transport of proteins across membranes, macromolecular-complex assembly or protein degradation and activation of signal transduction routes (Kim et al., 2013; Kakkar et al., 2014). Under the denomination of “molecular chaperones” there are a variability of proteins that have been classified into five different families according to sequence homology, common functional domains or subcellular localization: the HSP100s, the HSP90s, the HSP70/HSP110, HSP60/CCTs, and the α -crystallin-containing domain generally called the “small HSPs” (Lindquist and Craig, 1988; Sharma and Priya, 2016). Typically, molecular chaperones recognize exposed hydrophobic domains in unfolded or misfolded proteins, preventing their self-association and aggregation (Hartl et al., 2011; Kim et al., 2013). The regulation of chaperones can be divided into three categories, (1) constitutively expressed, (2) induced upon stress, and (3) constitutively expressed and induced upon stress (Morimoto, 2008). Under normal conditions the HSP levels match the overall level of protein synthesis, but during stress when mature proteins are unfolded the chaperone machinery is challenged and the expression of specific HSPs increases (Kakkar et al., 2014).

Next to their function under normal cellular conditions, chaperones play an important part during neurodegeneration when there is an overload of the PQC system by unfolded proteins (Kim et al., 2013; Kakkar et al., 2014; Lindberg et al., 2015). Each neurodegenerative disease is associated with a different subset of HSPs that can positively influence the overload of unfolded proteins (Kakkar et al., 2014). One example is the molecular chaperone DNAJB6b that can suppress polyglutamine (polyQ) aggregation and toxicity in a cell model for polyQ diseases (Hageman et al., 2010; Gillis et al., 2013), and suppress the primary nucleation step by a direct protein-protein interaction with polyQ proteins (Månsson et al., 2014b) and A β 42 (Månsson et al., 2014a). Overexpression of DNAJB6 in a mouse model for HD results in reduction of the disease symptoms and increase life span (Kakkar et al., 2016). In PD, the overexpression of HSP70 can prevent α -synuclein-induced cell death in yeast, *Drosophila* and mouse models of this disease (Auluck and Bonini, 2002; Klucken et al., 2004; Flower et al., 2005; Sharma and Priya, 2016). HSP70 has been shown to bind prefibrillar species of α -synuclein and to inhibit the fibril formation (Dedmon et al., 2005). There is also a role for molecular chaperones in AD, where the overexpression of heat shock factor 1 (HSF-1), main regulator of HSPs expression, in an AD mouse model diminished soluble A β levels (Pierce et al., 2013), and multiple HSPs alleviated Tau toxicity in cells (Kakkar et al., 2014).

Additionally to the inhibition of protein aggregation of misfolded proteins, a disaggregase activity has been described for some molecular chaperones that can solubilize aggregated proteins (Glover and Lindquist, 1998; Tyedmers et al., 2010; Winkler et al., 2012). In bacteria, yeast, fungi and plants the HSP100 disaggregases are highly conserved (Tyedmers et al., 2010; Torrente and Shorter, 2013). In yeast, HSP104 collaborates with the other HSPs, to effectively disaggregate and reactivate proteins trapped in disordered aggregates (Glover and Lindquist, 1998; Shorter, 2011; Torrente and Shorter, 2013; Lindberg et al.,

2015). Metazoans entirely lack HSP100 disaggregases in the cell, however, it has recently shown that in mammals the disaggregase function is performed by the HSPH (Hsp110) family in cooperation with the HSP70-40 machine (Rampelt et al., 2012; Gao et al., 2015; Nillegoda and Bukau, 2015). This machinery has been shown to fragmentize and depolarize large α -synuclein fibrils within minutes into smaller fibrils, oligomers and monomeric α -synuclein in an ATP-dependent fashion (Gao et al., 2015).

Chaperones are also involved in other pathways of PQC. As discussed below they can mediate the degradation of misfolded proteins or their sequestration in cellular compartments.

Together, this shows the important direct role chaperones play in the formation of amyloids and thereby making chaperones an interesting therapeutic target for neurodegenerative diseases.

Protein Degradation

Protein degradation is another key mechanism to deal with misfolded proteins. Three pathways have been described, i.e., the ubiquitin (Ub)-proteasome system (UPS), chaperone mediated autophagy (CMA), and macroautophagy (Ciechanover, 2006; Ciechanover and Kwon, 2015). Soluble misfolded proteins are degraded by the UPS, a system that is dependent on a cascade of three enzymes E1, E2, and E3 ligase that conjugate ubiquitin to the misfolded proteins. The ubiquitinated protein is transported by molecular chaperones to the proteolytic system, where the protein is unfolded and passed through the narrow chamber of the proteasome that cleaves it into short peptides (Ciechanover et al., 2000). The CMA degrades proteins that expose KFERQ-like regions, these regions are recognized by the chaperone heat-shock cognate 70 (Hsc70) and delivered to the lysosomes and degraded by lysosomal hydrolases into amino acids (Kiffin et al., 2004; Rothenberg et al., 2010). Protein aggregates or proteins that escape the first two degradation pathways are directed to macroautophagy, a degradation system where substrates are segregated into autophagosomes which in turn are fused with lysosomes for degradation into amino acids (Koga and Cuervo, 2011). The proteins involved in neurodegenerative disease can rapidly aggregate and can thereby escape degradation when they are still soluble, the aggregates, and intermediate forms are partly resistant to the known degradation pathways (reviewed in Ciechanover and Kwon, 2015).

Unfolded Protein Response

In the endoplasmic reticulum (ER), the unfolded protein response (UPR), induced during periods of cellular and ER stress, aims to reduce unfolded protein load, and restore protein homeostasis by translational repression. ER stress can be the result of numerous conditions, including amino acid deprivation, viral replication and the presence of unfolded proteins, resulting in activation of the UPR. The UPR has three pathways activated through kinases, (1) protein kinase RNA (PKR)-like ER kinase (PERK), (2) inositol-requiring enzyme 1 (IRE1), and (3) activating transcription factor 6 (ATF6; Halliday and Mallucci, 2015). These kinases are kept in their inactive state by the binding immunoglobulin protein (BiP), during ER stress this protein binds to exposed hydrophobic domains of

unfolded proteins and thereby allowing activation of these factors (Gething, 1999). In neurodegenerative diseases markers of the UPR, like PERK-P and eIF2 α -P, have been reported in the brain of patients with neurodegenerative disease and in mouse models of neurodegeneration (Hetz and Mollereau, 2014; Scheper and Hoozemans, 2015).

Protein Compartmentalization

In the cell, misfolded proteins can be sequestered in distinct protein quality control compartments by chaperones and sorting factors. These compartments function as temporary storage until the protein can be refolded or degraded by the proteasome. Different compartments have been described in the literature that sequester different kind of misfolded proteins at various conditions, these include JUNQ, IPOD, Q-body, and aggresome (Sontag et al., 2014). Insoluble proteins are sequestered into insoluble protein deposit (IPOD) compartments that are located near the periphery of the cell (Kaganovich et al., 2008; Specht et al., 2011). If the proteasome is impaired these insoluble proteins can also be sequestered in aggresomes (Johnston et al., 1998), whereas, soluble misfolded proteins can be sequestered into ER-anchored structures named Q-bodies (Escusa-Toret et al., 2013). However, when the proteasome is impaired soluble ubiquitinated misfolded proteins are sequestered into ER-associated juxtannuclear quality control compartments (JUNQ) compartments (Kaganovich et al., 2008; Specht et al., 2011).

The JUNQ and Q-bodies concentrate misfolded proteins in distinct compartments together with chaperones and clearance factors, which makes processing them easier and more efficient. The IPOD and aggresomes are thought to protect the cell from toxic misfolded species, they do however also contain some disaggregases and autophagy related proteins and might therefore be recovered from these compartments (Kaganovich et al., 2008; Specht et al., 2011).

Drivers of Amyloid Formation

Most studies on neurodegenerative diseases focus on either the toxic mechanisms or on the PQC system as possible targets for treatment. Only a few studies so far have focused directly on modifiers of the protein aggregation pathway. One example is the study that focused on a reduced insulin/insulin-like growth factor 1 signaling (IIS), which induces the assembly of A β into densely packed and larger fibrillar structures (Cohen et al., 2009). The exact mechanisms behind the formation of these tightly packed amyloid structures by IIS signaling remains to be unraveled.

MOAG-4 (modifier of aggregation 4) was found in a forward genetic screen using *C. elegans* models for neurodegenerative diseases, as an enhancer of aggregation and toxicity of several aggregation-prone disease proteins, including polyQ, α -synuclein, and A β (van Ham et al., 2010). MOAG-4 is a small protein of unknown function that is evolutionarily highly conserved. It contains a 4F5 domain of unknown function and is predicted to have a helix-loop-helix secondary structure. MOAG-4 itself was excluded from the polyQ aggregates in the *C. elegans* model. Based on biochemical experiments with worm extracts, MOAG-4 has been suggested to act on the formation of a compact aggregation intermediate. Furthermore, *in vitro* studies

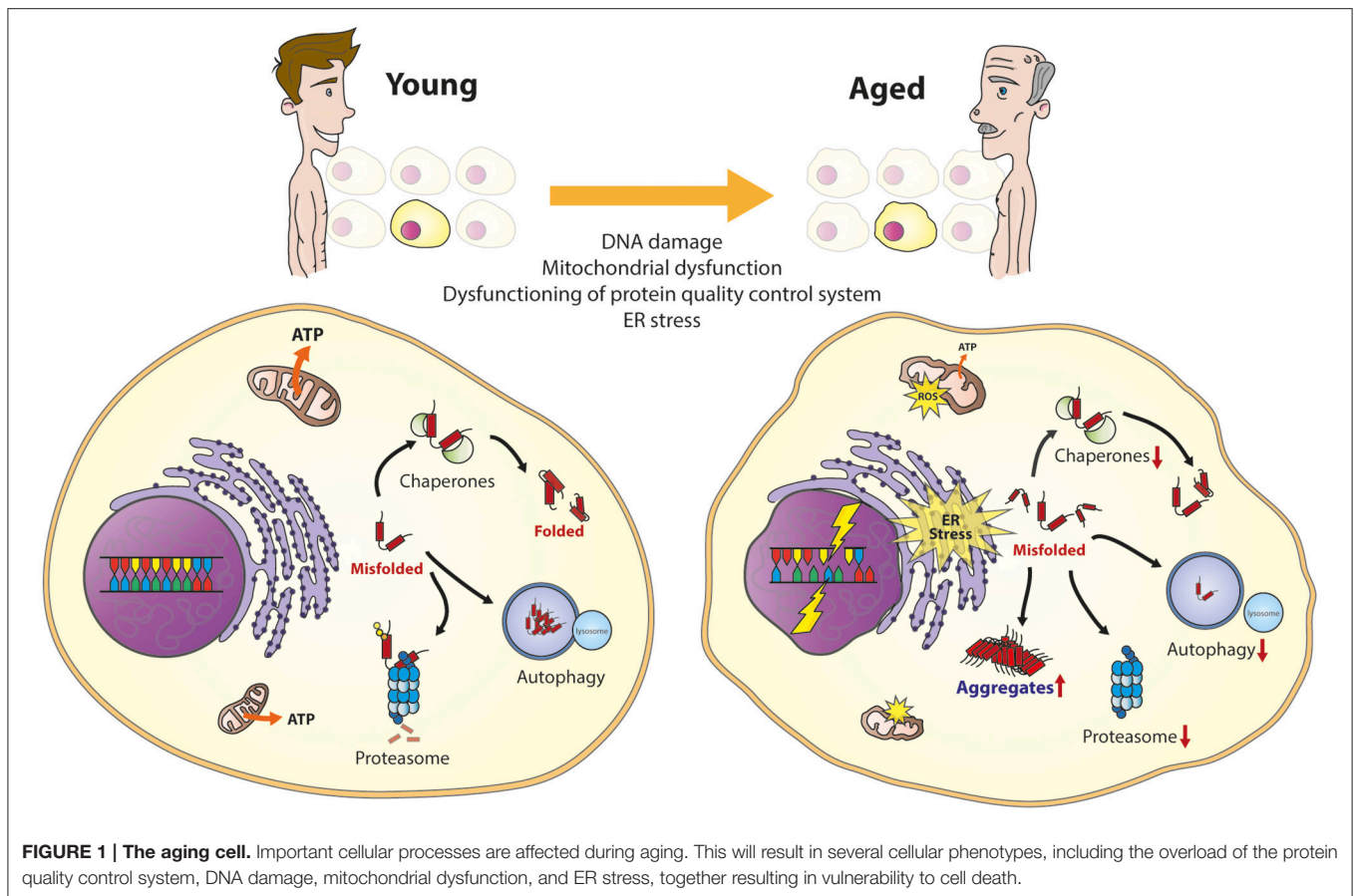
with mutant HTT exon 1 and MOAG-4 show a direct increase in aggregation (Unpublished data). Moreover, it was shown that the effect on aggregation works independent from DAF-16, HSF-1, and chaperones.

The human orthologs of MOAG-4 were found to be a two small proteins with unknown function, i.e., Small EDKR Rich Factor (SERF) 1A and 2. These two orthologs are 40% identical and 54% similar to MOAG-4 (van Ham et al., 2010). It was found that SERF1a (Falsone et al., 2012) is able to directly drive the amyloid formation of mutant HTT exon 1 and alpha-synuclein in an *in vitro* assay. It has been suggested that SERF1a directly affects the amyloidogenesis of alpha-synuclein by catalyzing the transition of an alpha-synuclein monomer into a amyloid-nucleating species (Falsone et al., 2012). From cell culture experiments we know that overexpression of SERF1a or SERF2, together with mutant HTT exon 1 results in an increase in toxicity and aggregation of the polyQ protein. Whereas, knock down of SERF using siRNA results in reduced toxicity and aggregation (van Ham et al., 2010).

PROTEIN HOMEOSTASIS IN AGING

Under normal conditions, the PQC can rapidly sense and correct cellular disturbances, by e.g., activating stress-induced cellular responses to restore the protein balance. During aging or when stress becomes chronic, the cell is challenged to maintain proper protein homeostasis (Figure 1; Koga et al., 2011; Labbadia and Morimoto, 2015; Radwan et al., 2017). Eventually, this can lead to chronic expression of misfolded and damaged proteins in the cell that can result in the formation of protein aggregates. The presence of aggregation-prone proteins contributes to the development of age-related diseases (Chiti and Dobson, 2006; Kakkar et al., 2014). The decline of protein homeostasis during aging is a complex phenomenon that involves a combination of different factors.

In line with the decreased protein homeostasis, there appears to be an impairment of the upregulation of molecular chaperones during aging (reviewed in Koga et al., 2011). This has been reported for HSP70 in senescent fibroblasts and in different tissues from different species, including monkeys (Fargnoli et al., 1990; Pahlavani et al., 1995; Hall et al., 2000). The importance to regulate the expression of HSPs is seen in flies and worms, where upregulation of HSPs leads to increase in lifespan (Walker et al., 2001; Hsu et al., 2003; Morley and Morimoto, 2003). Furthermore, lymphocytes from human centenarians show chaperone-preserved upregulation during heat shock (Ambra et al., 2004). It has been proposed that inability of the transcription factor HSF-1 to bind the chaperone gene promoter could explain the failure of *hsp70* to respond to stress during aging (Ambra et al., 2004; Singh et al., 2006). The functional decline of chaperones during aging also impairs proper folding of proteins in the ER resulting in activation of the UPR (reviewed in Taylor, 2016). Moreover, it has been shown that the capacity of some elements of the UPR, like PERK or IRE-1 also decline with age (Paz Gavilán et al., 2006; Taylor and Dillin, 2013).



Since all major classes of molecular chaperones, with the exception of the small HPSS, are ATPases it has been suggested that the depletion of ATP levels during aging due to mitochondria dysfunction would affect their activity (Kaushik and Cuervo, 2015; Yerbury et al., 2016). This is reflected by the repression of ATP-dependent chaperones and the induction of ATP-independent chaperones in the aging human brain (Brehme et al., 2014). This may contribute to the decline of chaperoning function during aging.

The activity of the degradation pathways of the PQC, autophagy and the proteasome, are also reduced during aging (reviewed in Koga et al., 2011 and Kaushik and Cuervo, 2015). The proteasome decline is caused by a down-regulation or deregulation of different proteasomal subunits and regulatory factors (Keller et al., 2000; Ferrington et al., 2005). In autophagy, fusion between the vesicles carrying the cytosolic cargo and lysosomal compartments is severely impaired. The chaperone-mediated autophagy is reduced due to progressively lower levels of receptors at the lysosomal membrane with age (Cuervo and Dice, 2000; Koga et al., 2011). Furthermore, a more active proteasome has been found in fibroblasts from centenarians (Chondrogianni et al., 2000; Koga et al., 2011) and reactivation of the proteasome and/or autophagy pathways increases lifespan of yeast, worms, and flies (Chondrogianni et al., 2015; Kaushik and Cuervo, 2015; Madeo et al., 2015). Altogether, showing the importance to remain a functioning PQC during aging.

MECHANISMS OF PROTEIN TOXICITY IN NEURODEGENERATIVE DISEASES

Neuronal loss is one of the hallmarks of neurodegenerative diseases, where the neurons that are vulnerable to disease pathology differ for each disease. Initially it was thought that the protein aggregates that are observed in post-mortem brain material of patients were toxic (Davies et al., 1997; Kim et al., 1999). But this view shifted toward the hypothesis that the protein aggregates may actually be neuroprotective and that intermediate species are toxic. Indeed, the presence of diffuse protein resulted in higher toxicity compared to the presence of protein aggregates only (Arrasate et al., 2004). Furthermore, overexpression of HSF-1 in a cell model for HD leads to fewer but larger aggregates and increased viability (Pierce et al., 2010). The toxicity of intermediate species may arise from the presence of hydrophobic groups on their surface, that under normal physiological conditions would not be accessible within the cellular environment (Campioni et al., 2010). Accessible hydrophobicity in proteins can result in inappropriate interactions with many functional cellular components like the plasma membrane (Bucciantini et al., 2012). Therefore, aggregation might be a mechanism to assist in the clearance of misfolded proteins. In this regard, it has been described that chaperones can suppress the toxicity of the oligomeric intermediate species by promoting the formation of

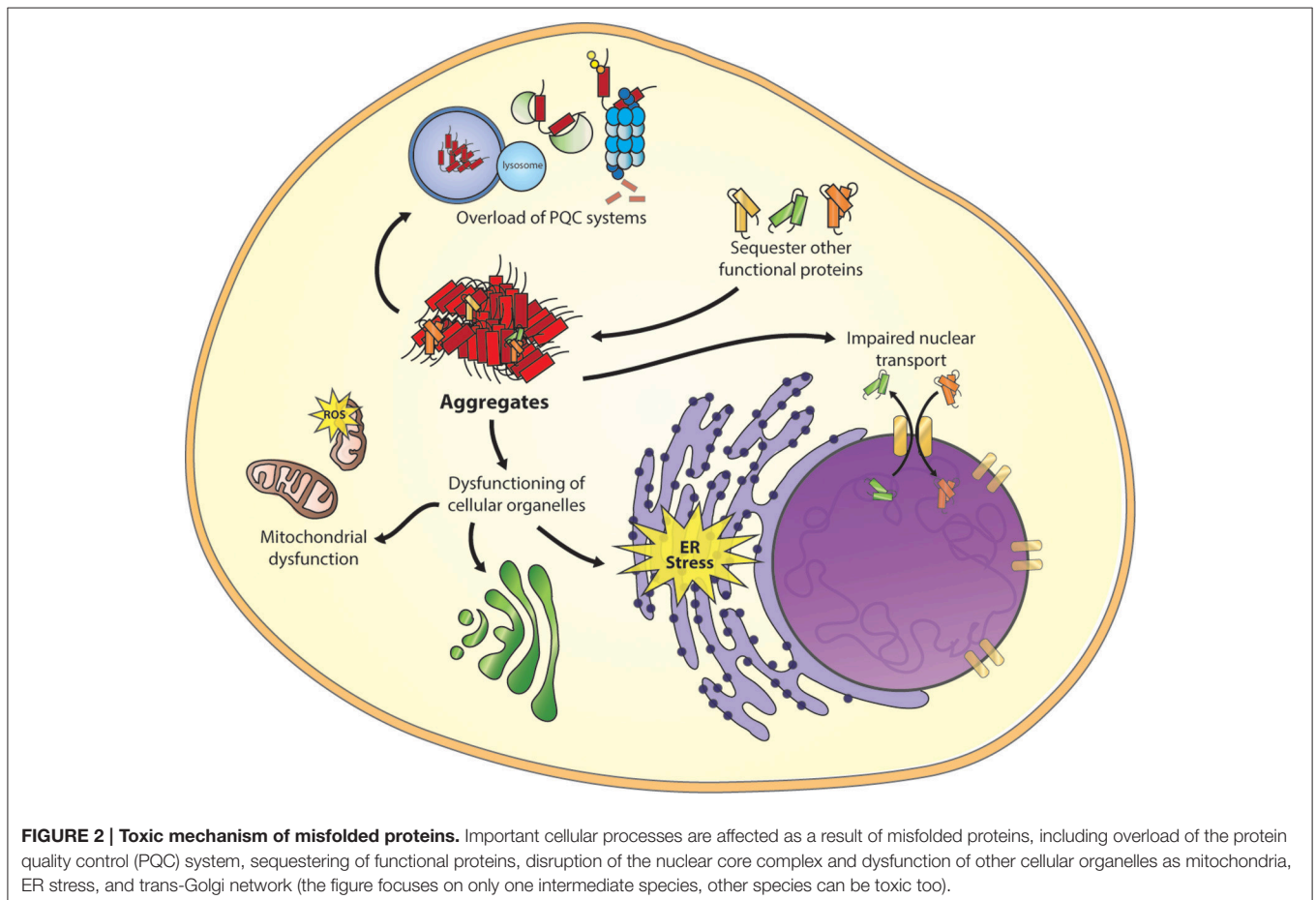
larger aggregates (Lindberg et al., 2015). The question remains why these intermediate species are toxic. Different mechanisms have been suggested.

The increase of misfolded proteins during aging or disease can interfere with the PQC system by overloading the system (Figure 2), which in turn, can result in a propagation of folding defects and eventually protein aggregation (Labbadia and Morimoto, 2015). In polyQ worm models disruption of the PQC system by the polyQ aggregates resulted in the loss of function of several metastable proteins with destabilizing temperature-sensitive mutations, which also enhanced the aggregation of polyQ proteins (Gidalevitz et al., 2006). Furthermore, polyQ aggregates also impair the ubiquitin-proteasome system in cellular models for disease (Bence et al., 2001).

A “gain of function” mechanism is another form of cellular toxicity. Due to misfolding, hydrophobic residues of the protein can be located at the surface, permitting uncommon interactions with a wide range of cellular targets (Figure 2; Stefani and Dobson, 2003), including molecular chaperones (Park et al., 2013). Using cytotoxic artificial β -sheet protein aggregates it was found that the endogenous proteins that are sequestered by these aggregates share many physicochemical properties, including their relatively large size and enriched unstructured regions. Many of these proteins play essential roles in the

several pathways, including translation, chromatin structure, and cytoskeleton. A loss of these proteins might result in a collapse of essential cellular functions and consequently may induce toxicity (Olzscha et al., 2011).

Recently, an effect of protein aggregation on the nuclear pore complex (NPC) was described. The GGGGCC (G_4C_2) repeat expansion in the non-coding region of the C9orf72 protein is the most common cause of sporadic and familial forms of amyotrophic lateral sclerosis (ALS) and frontal temporal dementia (FTD), (DeJesus-Hernandez et al., 2011; Renton et al., 2011). However, the exact mechanism of how the C9orf72 mutations contribute to the disease remains elusive. Two hypotheses are proposed, the first describes that the repeat containing transcripts can form intra-nuclear RNA foci that sequester various RNA-binding proteins (Donnelly et al., 2013), and the second describes the production of toxic dipeptide repeat proteins (DPRs; Ash et al., 2013). New insights have shown that mutant C9orf72 RNA affects nuclear transport of proteins and RNA (Figure 2). Loss of NPC proteins were found to enhance G_4C_2 repeat toxicity in fly and human cell models for disease (Freibaum et al., 2015; Zhang et al., 2015). Moreover, a screen to identify modifiers of toxicity by PR₅₀DPR identified an enrichment in nucleocytoplasmic transport proteins, in which the six strongest hits were members of the karyopherin family of



nuclear-import proteins (Jovičić et al., 2015). Furthermore, it was shown that nuclear localization of artificial β -sheet-, HTT-, and TDP-43 aggregates reduces toxicity in comparison to cytoplasmic aggregates. Because the cytoplasmic aggregates interfere with both import and export of proteins through the nuclear pore complex, they specifically affect proteins containing disordered and low complexity domains including many nuclear transport factors (Woerner et al., 2016). These studies show that reduced nuclear transport, as a result of protein aggregates, results in cellular toxicity. However, a better understanding of the exact mechanism behind these observations could provide us with a new therapeutic target to restore nuclear transport. In addition, several studies described toxic effects of protein aggregates on the functioning of other cellular organelles as the ER (Duennwald and Lindquist, 2008), mitochondrion (Rhein et al., 2009), and the trans-Golgi network (Cooper et al., 2006). Identifying different toxic consequences of misfolded proteins gives possibilities for treatments options.

Another mechanism of toxicity has been proposed in the literature, in which oligomeric aggregation intermediates bind and disrupt lipid membranes (Lashuel and Lansbury, 2006). Annular oligomeric structures have been identified for different amyloidogenic proteins, such as A β (Lashuel et al., 2002a,b), α -synuclein (Lashuel et al., 2002b,c), PrP (Sokolowski et al., 2003), or polyQ proteins (Wacker et al., 2004). These are pore-like structures that can embed into lipid bilayers and permeabilize membranes allowing the transit of small molecules. Diseases-associated mutations in A β (E22G) and α -synuclein (A53T and A30P) promote the formation of amyloid pores (Lashuel et al., 2002b,c; Lashuel and Lansbury, 2006). This is known as the amyloid pore hypothesis (Lashuel and Lansbury, 2006; Stöckl et al., 2013). Alternatively, a different explanation has been proposed for the permeabilization of membranes by α -synuclein, in which oligomers of this protein would not form pores, but they rather decrease the lipid order by incorporating between the tightly packed lipids, facilitating the diffusion of molecules through the membranes (Stöckl et al., 2013). Whether this alternative hypothesis can also be applicable to other amyloidogenic proteins still needs to be revealed. Furthermore, recent studies on non-pathological (Oropesa-Nuñez et al., 2016) and pathological proteins (Di Pasquale et al., 2010; Fukunaga et al., 2012; Mahul-Mellier et al., 2015) show that negatively charged ganglioside rich lipid rafts mediate toxicity of the prefibrillar oligomers.

Probably the toxicity of the disease proteins cannot be wholly explained by one of these mechanisms but rather by a combination of them.

Gliosis

Neuroinflammation or gliosis, a reactive change of the glial cells in response to damage, is a common pathological feature in neurodegenerative diseases like AD and HD (Perry et al., 2010). However, whether inflammation plays an active or consequential role in disease is still a topic for debate. Glial cells are divided into two major classes: microglia and macroglia, where microglia are the phagocytes that are ubiquitously distributed in the brain and are mobilized after injury, disease, or infection. Pathological

triggers, such as neuronal death or protein aggregates, activate the migration of microglia, which accumulate at the site of injury. This migration and recruitment is followed by the initiation of an innate immune response, which is a non-specific reaction resulting in the release of pro-inflammatory chemo- and cytokines (Gordon and Taylor, 2005; Hanisch and Kettenmann, 2007; Perry et al., 2010). The importance of glial cells in neurodegeneration is supported by the association found in genome wide association studies of immune receptors like TREM2 (Guerreiro et al., 2013; Jonsson et al., 2013) and CD33 (Griciuc et al., 2013) in AD. Gliosis has also been described for other neurodegenerative diseases as PD (Gerhard et al., 2006) and HD (Shin et al., 2005), but as the main aggregates are intracellular the response from microglia is not as strong as in AD.

Spreading

Prion diseases (PrD) are a group of fatal neurodegenerative disorders caused by infectious proteins called prions. In humans most PrD can be identified under the name Creutzfeldt-Jakob disease (CJD), and in animals under the name bovine spongiform encephalopathy (BSE; Collinge, 2001). In PrD, the cellular form of the prion protein (PrP^C) undergoes a conformational conversion into a β -sheet enriched isoform denoted as PrP^{Sc}. This occurs when the PrP^{Sc} comes in contact with the mostly α -helical PrP^C, as a result the PrP^C is misfolded into pathogenic PrP^{Sc}, which in turn can become a template for conversion of other PrP^C. The PrP^{Sc} form can form protein aggregates, prion deposits, often present as amyloid structures, which can propagate and possibly cause cell death (Collinge and Clarke, 2007; Collinge, 2016). PrDs are well-known to be able to spread throughout the brain via infectious prions. By the conversion of the protein into “seeds” due to stress, mutations or when PrP^C comes in contact with PrP^{Sc}, it incites a chain reaction of PrP misfolding (Halliday et al., 2014). Prions are out of scope for this review, although they are one of the most relevant topics in neurodegenerative diseases especially due to their infectivity. This “prion-like” character of other neurodegenerative disease proteins has been proposed.

Spreading of A β in AD was first observed in a marmoset injected with brain extract from AD patients or AD affected marmosets, leading to AD pathology 6–10 years after injection (Baker et al., 1993; Ridley et al., 2006). Injection with only cerebrospinal fluid of AD patients or synthetic A β did not result in AD pathology in the marmoset (Ridley et al., 2006). As studies with marmosets are limited, these studies were replicated in mice to further investigate the spreading of A β . Brain extracts from AD patients or transgenic mouse models can initiate AD pathology in the brains of transgenic mice overexpressing the Swedish-mutated human APP (Meyer-Luehmann et al., 2006). Injection of synthetic human A β fibrils can induce AD pathology in mice, however the potency is lower than with AD brain extract (Stöhr et al., 2012). In mice depleted of amyloid-beta precursor protein (APP) there is no spreading of the disease, however if you take brain extracts of APP depleted mice inoculated with A β seeds, this can lead to propagation after second transmission for up to 180 days,

suggesting extreme longevity of the A β “seeds” (Ye et al., 2015). Infectiousness of AD in humans has not yet been proven, though possible spreading of A β in humans was observed in two individual studies. The first study described four individuals with infectious Creutzfeldt-Jakob disease (CJD) who also showed moderate to severe AD pathology, they were injected as children with human growth hormone from cadaveric pituitary glands that contained PrP (Jaunmuktane et al., 2015). Another study observed infectious CJD in patients who received a dura mater transplant as a result of brain trauma or tumor, in five patients AD pathology was observed (Frontzek et al., 2016). As the patients in both studies did not carry pathogenic AD mutations or risk alleles and were too young to develop sporadic AD, the studies suggested that the treatment samples contained A β peptides.

Spreading of the PD pathology was first suggested when healthy dopaminergic neurons injected into the brain of PD patients showed Lewy body formation 11–16 years after transplantation (Kordower et al., 2008; Li et al., 2008). Follow-up studies in PD mouse models show that injection of brain extracts of PD transgenic mice results in the formation of PD pathology and increased mortality (Luk et al., 2012b; Mougenot et al., 2012). Furthermore, injection of synthetic α -synuclein (Luk et al., 2012a) or dementia with Lewy bodies (DLB) patient brain extract (Masuda-Suzukake et al., 2013) also results in PD pathology and neuronal death in healthy mice.

PROTEIN TOXICITY IN NON-NEURODEGENERATIVE DISEASES

Protein aggregation is also involved in non-neurodegenerative diseases, and can be distinguish into two groups: non-neuropathic systemic amyloidosis and non-neuropathic localized disease (reviewed in Chiti and Dobson, 2006; **Figure 3**). Similar to neurodegenerative diseases they arise from the failure of a specific protein or peptide to acquire its native functional conformational state resulting in aggregation of the protein.

In non-neuropathic localized disease, the protein aggregation occurs in a single cell type or tissue other than the brain. The most well-known disease is type II diabetes, an age-related disease in which the glucose homeostasis is disturbed due to pancreatic islet β -cell dysfunction and death caused by aggregation of the islet amyloid polypeptide (IAPP; Abedini and Schmidt, 2013; Westermark and Westermark, 2013; Knowles et al., 2014). The amyloid deposits in the islet β -cells were first described over 100 years ago (Opie, 1901), and are a common feature in the pancreas of post-mortem material of type II diabetes patients. Pancreatic β -cells normally secrete insulin to regulate glucose uptake and metabolism in the body, mature IAPP is stored in the insulin secretory granule and co-secreted with insulin (Marzban et al., 2005). The exact role of IAPP is still unknown, although many functions have been suggested including regulation of glucose homeostasis (Abedini and Schmidt, 2013). The human IAPP is extremely amyloidogenic *in vitro*, and amyloids accumulate in the pancreatic islet in the

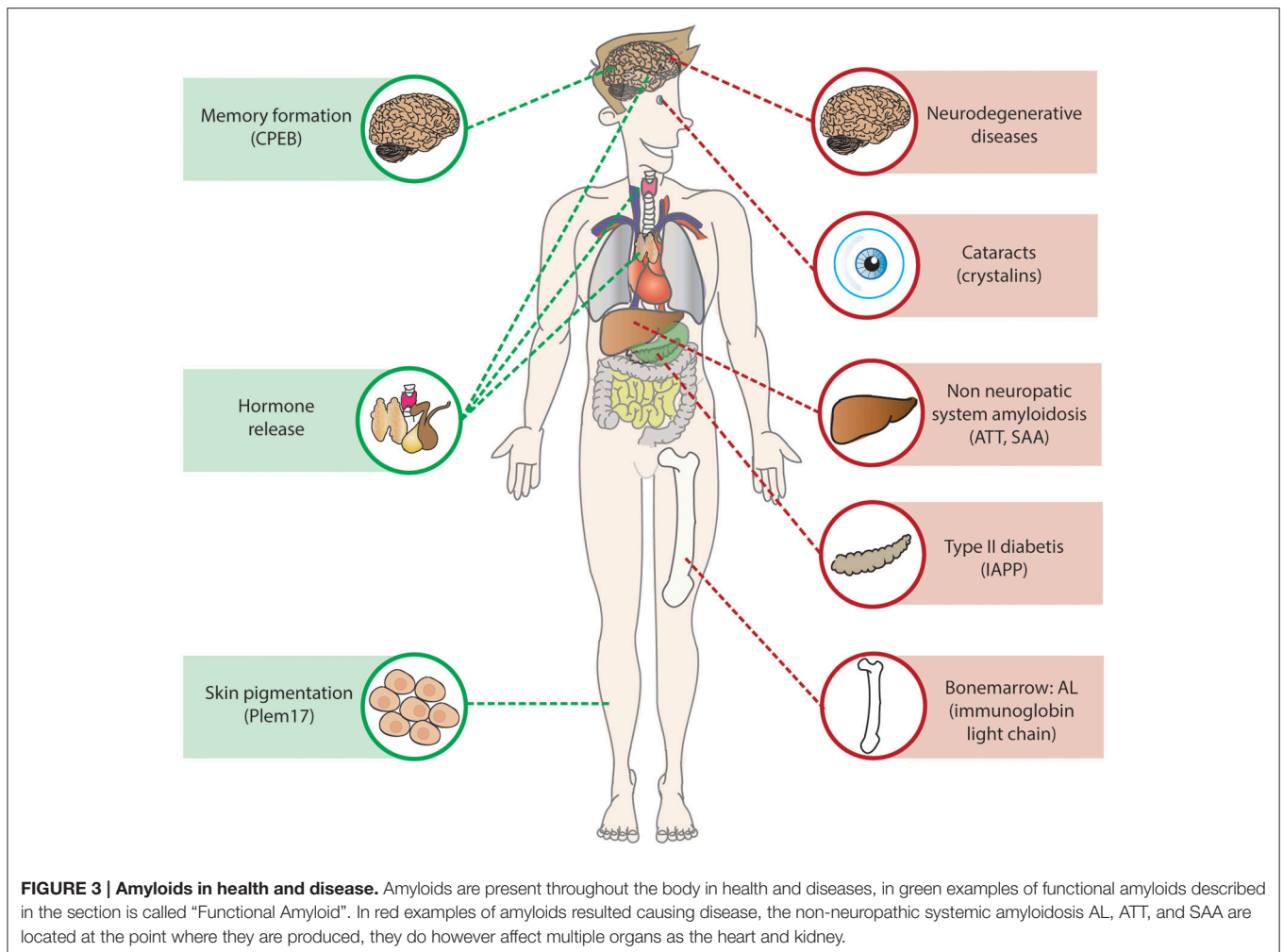
majority of the type II diabetes patients (Westermark et al., 1989; Betsholtz et al., 1990).

Another common non-neuropathic localized disease is cataracts, a common form of blindness affecting more than 50% of the individuals over the age of 70. Normally, the lens can stay transparent throughout life, as there is no protein turnover or synthesis. In cataracts soluble proteins of the lens accumulate into amyloids, resulting in reduced transparency and thus reduced sight. Thirty percent of the lens is made up of the molecular chaperones α A-crystallin and α B-crystallin that maintain the solubility of other lens proteins. However, during aging damaged proteins accumulate which can lead to aggregation of the crystalline proteins (Bloemendal et al., 2004). Furthermore, the R120G mutation in α B-crystallin causes early onset cataracts (Vicart et al., 1998; Perng et al., 1999).

The non-neuropathic systemic amyloidosis are rare diseases caused by protein aggregation in multiple tissues (Falk et al., 1997). The most common non-neuropathic systemic amyloidosis is AL amyloidosis, a mainly sporadic disease that is characterized by aggregation of fragments of the misfolded monoclonal immunoglobulin light chains in various organs (Comenzo, 2006; Chaulagain and Comenzo, 2013). The fragment can form β -sheets that are prone to form amyloids. The protein is produced by a plasma cell clone in the bone marrow and after internalization it can cause severe organ dysfunction and failure. The main organs affected by AL amyloidosis are the heart and kidneys, however, also other organs such as the liver, nervous system, and spleen can be affected (Falk et al., 1997; Comenzo, 2006). The treatment of the disease is aimed at eliminating the plasma cell clone, but a delay in the diagnosis of the disease often results in irreversible organ damage and thus poor prognoses (Chaulagain and Comenzo, 2013). Two other common non-neuropathic systemic amyloidosis are caused by transthyretin amyloidosis (ATTR) and serum amyloid A protein (SAA), both proteins are produced in the liver and affect various organs, however in ATTR heart failure is most common whereas SAA often results in renal failure (reviewed in Chiti and Dobson, 2006).

STRUCTURAL AND FUNCTIONAL PROPERTIES OF AMYLOID

The first amyloid was observed and described in 1854 by Rudolph Virchow for systemic amyloidosis (Sipe and Cohen, 2000). Since then, many diseases have been associated with amyloids. The proteins associated with protein aggregation diseases have no obvious similarity in sequences, native structures, or function. They do however, share characteristics in their amyloid state as they can undergo structural rearrangements leading to the formation of amyloid fibrils (**Figure 4A**). The amyloid fibrils have a highly organized and stable structure composed of proteins with a cross β -sheet structure oriented vertically to the fibril axis. They appear under the electron microscope as unbranched filamentous structures of just a few nanometers in diameter while up to micrometers in length. The cross β -sheet structure of amyloid fibrils provides a stable structure for the formation



of continuous arrangement of hydrogen bonds between fibrils, eventually resulting in the formation of amyloids. The amyloid structures can be characterized by their following properties: insolubility to detergents like SDS and NP40, binding to specific dyes such as Thioflavins and Congo Red and resistance to proteases (reviewed in Chiti and Dobson, 2006). To learn more about intermediate species of the aggregation process the kinetics of aggregation can be studied *in vitro*. Using purified protein and an amyloid dye in a test tube, three phases of aggregation can be distinguished (**Figure 4B**). During the first lag phase there are mainly protein monomers and oligomers, this is followed by a rapid growth phase in which protein fibrils are formed, followed by a plateau phase in which the reaction is ended due to depletion of soluble proteins (Blanco et al., 2012).

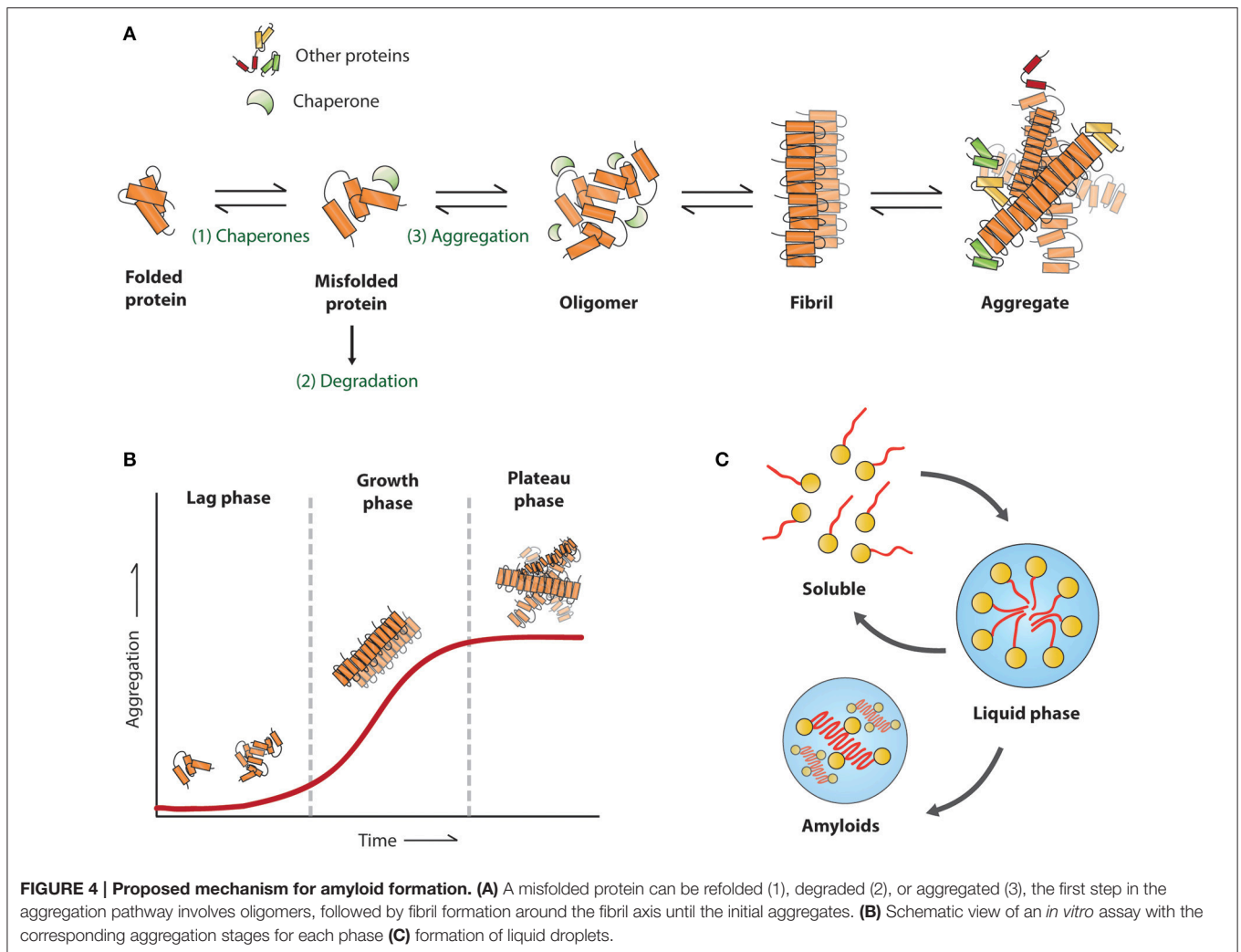
The aggregation propensity of a protein is determined by short aggregation prone regions (APR) that are generally buried in the hydrophobic core of the protein. However, due to misfolding or mutations, these regions can be exposed and therefore self-assemble into aggregates. APRs are typically short sequence segments between 5 and 15 amino acids with high hydrophobicity, low net charge, and have a high tendency to form β -sheet structures (Ventura et al., 2004; Esteras-Chopo

et al., 2005). Different algorithms have been generated to predict protein aggregation propensity of proteins or the effect of disease mutations, for example WALTZ an algorithm to determine amyloid forming sequences (Maurer-Stroh et al., 2010) and TANGO an algorithm that identifies the β -sheet regions of a protein sequence (Fernandez-Escamilla et al., 2004). Disease associated variants, not only related with neurodegenerative diseases, but also for cancers and immune disorders, tend to increase the predicted aggregation propensity of proteins (De Baets et al., 2015).

Amyloid in Disease

Proteins or peptides of most neurodegenerative diseases are intrinsically disordered in their free soluble form, like the $A\beta$ peptide in AD and α -synuclein in PD (Chiti and Dobson, 2006, 2009). Mutations in these disease proteins can make the protein even more prone to aggregate. For example, the A53T and A30P mutation of α -synuclein found in early onset PD, promotes the acceleration of amyloid fibrils *in vitro* (Conway et al., 1998, 2000).

Furthermore, having too many copies of an aggregation-prone protein itself can lead to disease by increasing protein concentrations in the cell (Chiti and Dobson, 2006, 2009). This



increase in protein concentration can switch the stability of the soluble state toward the amyloid state. For examples trisomy 21 patients (Down's syndrome) who have an extra copy of the APP protein and a highly increased risk of developing early onset AD (Wiseman et al., 2015). In addition, duplication or triplication of the α -synuclein gene (*SNCA*) results in early onset PD (Singleton et al., 2003), besides, the onset, progression, and severity of the disease phenotype increases with the number of copies of the *SNCA* gene (Chartier-Harlin et al., 2004). To this end, also proteins that regulate expression levels of disease proteins can cause or influence diseases, an example is the RNA binding protein Pumilio1 that regulates the mRNA levels of *Ataxin1* RNA. Pumilio1 haploinsufficiency accelerates the SCA1 disease progression in a mouse model for disease due to increase of the *Atxn1* mRNA and protein levels (Gennarino et al., 2015). If protein levels strongly influence the toxicity and disease phenotype this would suggest that lowering the protein load could be a therapeutic strategy. This was shown in an AD mouse model where the APP transgenes could be turned off with a tet-off system, when the APP levels were halted there

was an arrest of the AD pathology without clearance of the existing plaques (Jankowsky et al., 2005), resulting in a significant effect on cognitive function (Fowler et al., 2014). Indicating that the concentration of disease proteins influences the disease progression, thereby affecting the development of disease.

That structural differences between amyloid "strains" can influence disease phenotype was first described for PrD, where isolated strains of PrP aggregates from different sources propagated different in mice showing distinct incubation times and patterns of neuropathology (Fraser and Dickinson, 1973). Furthermore, different human PrP strains have been associated with differences in proteinase K digestion and distinct phenotypes of neuropathology (reviewed in Collinge and Clarke, 2007). More recently, investigation of two familial human AD patients with different disease symptoms, showed a structural difference in amyloid fibril structure (Lu et al., 2013). Furthermore, Arctic and Swedish familial AD patients brain homogenate results in distinct disease phenotypes in transgenic mice even after serial passage (Watts et al., 2014). Comparable results were found for Tau, another aggregation-prone protein

involved in AD. Injection of two distinct *in vitro* generated Tau strains into transgenic mice resulted in distinct pathologies up to three generations (Sanders et al., 2014). These studies suggest that variations in the properties of amyloid fibrils could affect disease pathology and symptoms. How these different strains are formed and how they contribute to the disease pathology is still unknown. It was however found that reduced IIS signaling in the APP/PS1 AD mouse model induces the assembly of A β into densely packed and larger fibrillar structures later in life, resulting in reduced AD symptoms (Cohen et al., 2009). Suggesting that altering the structure of the amyloid fibrils could be beneficial for patients, as certain structures appear to be more toxic than others.

Functional Amyloid

Amyloids structures are known to have biological functions in *Escherichia coli*, silkworms, fungi, and mammals (Fowler et al., 2007). One example in mammals is Pmel17 (Figure 3), a highly aggregation-prone protein that forms functional amyloid structures that are the main component of melanosome fibrils, membrane-bound organelles in pigment cells that store and synthesize melanin. Pmel17 contains a partial repeat sequence that is essential for amyloid formation that can only be formed in the mildly acid pH of melanosomes (McGlinchey et al., 2009). The exact function of Pmel17 in melanosomes is unknown, although a role in protection against oxidative damage has been suggested, as well as a role in concentrating melanins to facilitate intra- and extracellular transport (Watt et al., 2013).

More functional amyloids in mammals can be found in hormone release, it was shown that certain hormones can be stored in amyloid-like aggregates in the secretory granules of the cell. These secretory granules have a β -sheet rich structure that is Thioflavin S and Congo Red positive and are able to release functional monomeric hormone structures upon dilution, and show only moderately toxicity on cell cultures, possibly due to their membrane-encapsulated state in the granules (Maji et al., 2009).

Interestingly, the formation of amyloids has recently been associated with long-term memory. The cytoplasmic polyadenylation element-binding protein (CPEBs) is a regulator of activity dependent synthesis in the synapse. The fly homolog Orb2 (Majumdar et al., 2012) and mouse homolog CPEB3 (Fioriti et al., 2015) are present in the brain as a monomer and SDS-resistant oligomer. Activation of the fly or mouse brain results in increase of the oligomeric Orb2/CPEB3 species. Selectively disrupting the oligomerization capacity of Orb2 by a genetic mutation resulted in long-term memory loss in flies (Majumdar et al., 2012) and loss of CPEB3 in the mouse brain resulted in impaired long term memory (Fioriti et al., 2015). Orb2 alters protein composition of the synapse by a mechanism in which the oligomeric Orb2 stimulates translation by elongation and protection of poly(A) tail, whereas the monomeric Orb2 does the contrary (Khan et al., 2015).

These functional amyloids point toward the origin of amyloid-prone sequences and their suppressors and enhancers. Even though, these functional amyloids have not been linked to human

diseases, a functional role might be the case for the amyloid domains of disease proteins with unknown functions. More studies toward understanding the functionality of these amyloids and the difference with the disease amyloids are required to have a better understanding of why certain amyloids are toxic while others are not.

Liquid Droplets/Liquid-to-Solid-Phase Transition

It was recently found that proteins with prion-like domains can form functional non-membrane-bound organelles like ribonucleoprotein (RNP) bodies, that behave like liquid droplets which can rapidly assemble and disassemble in a response to changes in the cellular environment (Han et al., 2012; Kato et al., 2012). The RNP bodies include processing bodies and stress granules in the cytoplasm, and nucleoli, Cajal bodies and PML bodies in the nucleus. Due to the dynamic structures of RNPs there is free diffusion within the bodies and rapid exchange with the external environment. Like in liquid-liquid phase separation (LLPS) the RNP bodies exhibit liquid-like behaviors such as wetting, dripping, and relaxation to spherical structures upon fusion (Chong and Forman-Kay, 2016; Uversky, 2017). These properties can facilitate their function, by allowing for high concentration of molecular components that nonetheless remain dynamic within the droplet. Interestingly many of the proteins known to segregate into RNP bodies contain repetitive putatively prion-like domains, that can reversibly transform from soluble to a dynamic amyloid-like state (Kato et al., 2012). Furthermore, dysregulation of these RNP bodies by RNA-binding proteins have been associated with neurodegenerative diseases as ALS (Ramaswami et al., 2013).

The link for these RNP bodies in disease was first found for the FUS protein, mutations in the N-terminal prion-like domain have been associated with ALS, and FTD. This protein plays an important role in RNA processing and localizes to both cytoplasmic RNP bodies and transcriptionally active nuclear puncta, the prion-like domain is essential for forming these liquid-like compartments (Shelkovernikova et al., 2014). The N-terminus of FUS is structurally disordered both as a monomer and in its liquid state (Burke et al., 2015). *In vitro*, these droplets convert with time from a liquid to an aggregated state (Figure 4C), and this conversion is accelerated by patient-derived mutations (Patel et al., 2015). Furthermore, concentrated liquid droplets increase the probability of aggregation events of RNA-binding proteins in the RNP bodies in a concentration dependent manner (Molliex et al., 2015). mRNA itself can drive its phase transition of the disordered RNA binding-protein Whi3, and thereby altering the droplet viscosity, dynamics, and propensity to fuse. Suggesting that, mRNA contains biophysical properties of phase-separated compartments. Like FUS droplets the Whi3 droplets mature over time and appear to be fibrillar (Zhang et al., 2015).

This new line of research indicates another possible function for prion-like domains of various proteins and the proteins it interacts with. Furthermore, research to these RNP bodies shows possible reasons why these proteins form amyloids. However,

much is still unknown about the exact mechanisms of the amyloid like domains and the RNP bodies that have to be investigated.

CONCLUSION

Protein aggregation is a complex process influenced by many factors, pathways, and mechanisms. Under the right conditions any protein could form amyloid-like structures (Chiti and Dobson, 2006). Although amyloids have been traditionally related to diseases, they also have diverse functions in organisms from bacteria to human that may underlie their nature. Nevertheless, the toxicity of amyloid intermediate species associated with disease makes protein aggregation a process that has to be under tight control and regulation. In this context, aging is a key risk factor due to the progressive decline of protein homeostasis, which leads to increased protein misfolding and aggregation. This can eventually result in the onset of age-related diseases characterized by protein aggregation. Mutations or duplications that lead to the appearance of aggregation-prone proteins that are constitutively expressed in the cell, creating a chronic stress situation, leads to an early onset of those diseases due to the deregulation of the protein homeostasis balance.

As the human population becomes older, it is essential to understand the processes underlying age-related diseases

that are the result of protein aggregation and its associated toxicity. This is a very broad research field, ranging from biophysics to clinical trials. Every year discoveries are made that involve the identification of factors affecting protein aggregation. Examples include the discovery of modifiers of protein aggregation such as MOAG-4/SERF, or the processes where protein aggregation and amyloid structure are involved, like RNA granules and liquid droplets formation. It can be concluded that the overall knowledge of the aggregation process is improving, which will allow for the development of new and accurate treatments against aggregation-linked diseases.

AUTHOR CONTRIBUTIONS

ES wrote the review with the contribution and substantial intellectual input from MK, EN, and AM. MK did the figure design.

ACKNOWLEDGMENTS

EN was supported by a European Research Council (ERC) starting grant. AM was supported by a Marie Curie Actions Fellowship (FP7-MC-IEF). MK was supported by a BCN-research grant.

REFERENCES

- Abedini, A., and Schmidt, A. M. (2013). Mechanisms of islet amyloidosis toxicity in type 2 diabetes. *FEBS Lett.* 587, 1119–1127. doi: 10.1016/j.febslet.2013.01.017
- Ambra, R., Mocchegiani, E., Giacconi, R., Canali, R., Rinna, A., Malavolta, M., et al. (2004). Characterization of the hsp70 response in lymphoblasts from aged and centenarian subjects and differential effects of *in vitro* zinc supplementation. *Exp. Gerontol.* 39, 1475–1484. doi: 10.1016/j.exger.2004.07.009
- Arrasate, M., Mitra, S., Schweitzer, E. S., Segal, M. R., and Finkbeiner, S. (2004). Inclusion body formation reduces levels of mutant huntingtin and the risk of neuronal death. *Nature* 431, 805–810. doi: 10.1038/nature02998
- Ash, P. E., Bieniek, K. F., Gendron, T. F., Caulfield, T., Lin, W. L., DeJesus-Hernandez, M., et al. (2013). Unconventional translation of C9orf72 GGGGCC expansion generates insoluble polypeptides specific to c9FTD/ALS. *Neuron* 77, 639–646. doi: 10.1016/j.neuron.2013.02.004
- Auluck, P. K., and Bonini, N. M. (2002). Pharmacological prevention of Parkinson disease in *Drosophila*. *Nat. Med.* 8, 1185–1186. doi: 10.1038/nm1102-1185
- Baker, H. F., Ridley, R. M., Duchon, L. W., Crow, T. J., and Bruton, C. J. (1993). Evidence for the experimental transmission of cerebral beta-amyloidosis to primates. *Int. J. Exp. Pathol.* 74, 441–454.
- Bence, N. F., Sampat, R. M., and Kopito, R. R. (2001). Impairment of the ubiquitin-proteasome system by protein aggregation. *Science* 292, 1552–1555. doi: 10.1126/science.292.5521.1552
- Bethsholtz, C., Christmanson, L., Engström, U., Rorsman, F., Jordan, K., O'Brien, T. D., et al. (1990). Structure of cat islet amyloid polypeptide and identification of amino acid residues of potential significance for islet amyloid formation. *Diabetes* 39, 118–122.
- Blanco, L. P., Evans, M. L., Smith, D. R., Badtke, M. P., and Chapman, M. R. (2012). Diversity, biogenesis and function of microbial amyloids. *Trends Microbiol.* 20, 66–73. doi: 10.1016/j.tim.2011.11.005
- Bloemendal, H., de Jong, W., Jaenicke, R., Lubsen, N. H., Slingsby, C., and Tardieu, A. (2004). Ageing and vision: structure, stability and function of lens crystallins. *Prog. Biophys. Mol. Biol.* 86, 407–485. doi: 10.1016/j.pbiomolbio.2003.11.012
- Bonifati, V., Rizzu, P., van Baren, M. J., Schaap, O., Breedveld, G. J., Krieger, E., et al. (2003). Mutations in the DJ-1 gene associated with autosomal recessive early-onset Parkinsonism. *Science* 299, 256–259. doi: 10.1126/science.1077209
- Brehme, M., Voisine, C., Rolland, T., Wachi, S., Soper, J. H., Zhu, Y., et al. (2014). A chaperome subnetwork safeguards proteostasis in aging and neurodegenerative disease. *Cell Rep.* 9, 1135–1150. doi: 10.1016/j.celrep.2014.09.042
- Bucciantini, M., Nosi, D., Forzan, M., Russo, E., Calamai, M., Pieri, L., et al. (2012). Toxic effects of amyloid fibrils on cell membranes: the importance of ganglioside GM1. *FASEB J.* 26, 818–831. doi: 10.1096/fj.11-189381
- Burke, K. A., Janke, A. M., Rhine, C. L., and Fawzi, N. L. (2015). Residue-by-residue view of *in vitro* FUS granules that bind the C-terminal domain of RNA polymerase II. *Mol. Cell* 60, 231–241. doi: 10.1016/j.molcel.2015.09.006
- Campioni, S., Mannini, B., Zampagni, M., Pensalfini, A., Parrini, C., Evangelisti, E., et al. (2010). A causative link between the structure of aberrant protein oligomers and their toxicity. *Nat. Chem. Biol.* 6, 140–147. doi: 10.1038/nchembio.283
- Chartier-Harlin, M. C., Kachergus, J., Roumier, C., Mouroux, V., Douay, X., Lincoln, S., et al. (2004). α -synuclein locus duplication as a cause of familial Parkinson's disease. *Lancet* 364, 1167–1169. doi: 10.1016/S0140-6736(04)17103-1
- Chartier-Harlin, M. C., Crawford, F., Houlden, H., Warren, A., Hughes, D., Fidani, L., et al. (1991). Early-onset Alzheimer's disease caused by mutations at codon 717 of the beta-amyloid precursor protein gene. *Nature* 353, 844–846. doi: 10.1038/353844a0
- Chaulagain, C. P., and Comenzo, R. L. (2013). New insights and modern treatment of AL amyloidosis. *Curr. Hematol. Malign. Rep.* 8, 291–298. doi: 10.1007/s11899-013-0175-0
- Chiti, F., and Dobson, C. M. (2006). Protein misfolding, functional amyloid, and human disease. *Annu. Rev. Biochem.* 75, 333–366. doi: 10.1146/annurev.biochem.75.101304.123901
- Chiti, F., and Dobson, C. M. (2009). Amyloid formation by globular proteins under native conditions. *Nat. Chem. Biol.* 5, 15–22. doi: 10.1038/nchembio.131
- Chondrogianni, N., Georgila, K., Kourtis, N., Tavernarakis, N., and Gonos, E. S. (2015). 20S proteasome activation promotes life span extension and

- resistance to proteotoxicity in *Caenorhabditis elegans*. *FASEB J.* 29, 611–622. doi: 10.1096/fj.14-252189
- Chondrogianni, N., Petropoulos, I., Franceschi, C., Friguet, B., and Gonos, E. S. (2000). Fibroblast cultures from healthy centenarians have an active proteasome. *Exp. Gerontol.* 35, 721–728. doi: 10.1016/S0531-5565(00)00137-6
- Chong, P. A., and Forman-Kay, J. D. (2016). Liquid–liquid phase separation in cellular signaling systems. *Curr. Opin. Struct. Biol.* 41, 180–186. doi: 10.1016/j.sbi.2016.08.001
- Ciechanover, A. (2006). Intracellular protein degradation: from a vague idea thru the lysosome and the ubiquitin-proteasome system and onto human diseases and drug targeting. *ASH Educ. B.* 2006, 1–12. doi: 10.1182/asheducation-2006.1.1
- Ciechanover, A., and Kwon, Y. T. (2015). Degradation of misfolded proteins in neurodegenerative diseases: therapeutic targets and strategies. *Exp. Mol. Med.* 47:e147. doi: 10.1038/emmm.2014.117
- Ciechanover, A., Orian, A., and Schwartz, A. L. (2000). Ubiquitin-mediated proteolysis: biological regulation via destruction. *BioEssays* 22, 442–451. doi: 10.1002/(SICI)1521-1878(200005)22:5<442::AID-BIES6>3.0.CO;2-Q
- Cohen, E., Paulsson, J. F., Blinder, P., Burstyn-Cohen, T., Du, D., Estepa, G., et al. (2009). Reduced IGF-1 signaling delays age-associated proteotoxicity in mice. *Cell* 139, 1157–1169. doi: 10.1016/j.cell.2009.11.014
- Collinge, J. (2001). Prion diseases of humans and animals: their causes and molecular basis. *Annu. Rev.* 24, 519–550. doi: 10.1146/annurev.neuro.24.1.519
- Collinge, J. (2016). Mammalian prions and their wider relevance in neurodegenerative diseases. *Nature* 539, 217–226. doi: 10.1038/nature20415
- Collinge, J., and Clarke, A. R. (2007). A general model of prion strains and their pathogenicity. *Science* 318, 930–936. doi: 10.1126/science.1138718
- Comenzo, R. L. (2006). “Current and emerging views and treatments of systemic immunoglobulin light-chain (AL) amyloidosis,” in *The Kidney in Plasma Cell Dyscrasias* (Basel: KARGER), 195–210.
- Conway, K. A., Harper, J. D., and Lansbury, P. T. (2000). Fibrils formed *in vitro* from α -synuclein and two mutant forms linked to Parkinson's disease are typical amyloid. *Biochemistry* 39, 2552–2563. doi: 10.1021/bi991447r
- Conway, K. A., Harper, J. D., and Lansbury, P. T. (1998). Accelerated *in vitro* fibril formation by a mutant alpha-synuclein linked to early-onset Parkinson disease. *Nat. Med.* 4, 1318–1320. doi: 10.1038/3311
- Cooper, A. A., Gitler, A. D., Cashikar, A., Haynes, C. M., Hill, K. J., Bhullar, B., et al. (2006). Alpha-synuclein blocks ER-Golgi traffic and Rab1 rescues neuron loss in Parkinson's models. *Science* 313, 324–328. doi: 10.1126/science.1129462
- Cuervo, A. M., and Dice, J. F. (2000). Age-related decline in chaperone-mediated autophagy. *J. Biol. Chem.* 275, 31505–31513. doi: 10.1074/jbc.M002102200
- Davies, S. W., Turmaine, M., Cozens, B. A., DiFiglia, M., Sharp, A. H., Ross, C. A., et al. (1997). Formation of neuronal intranuclear inclusions underlies the neurological dysfunction in mice transgenic for the HD mutation. *Cell* 90, 537–548. doi: 10.1016/S0092-8674(00)80513-9
- De Baets, G., Van Doorn, L., Rousseau, F., and Schymkowitz, J. (2015). Increased aggregation is more frequently associated to human disease-associated mutations than to neutral polymorphisms. *PLoS Comput. Biol.* 11:e1004374. doi: 10.1371/journal.pcbi.1004374
- Dedmon, M. M., Christodoulou, J., Wilson, M. R., and Dobson, C. M. (2005). Heat shock protein 70 inhibits alpha-synuclein fibril formation via preferential binding to prefibrillar species. *J. Biol. Chem.* 280, 14733–14740. doi: 10.1074/jbc.M413024200
- DeJesus-Hernandez, M., Mackenzie, I. R., Boeve, B. F., Boxer, A. L., Baker, M., Rutherford, N. J., et al. (2011). Expanded GGGGCC hexanucleotide repeat in noncoding region of C9ORF72 causes chromosome 9p-linked FTD and ALS. *Neuron* 72, 245–256. doi: 10.1016/j.neuron.2011.09.011
- Di Pasquale, E., Fantini, J., Chahinian, H., Maresca, M., Taïeb, N., and Yahi, N. (2010). Altered ion channel formation by the Parkinson's-disease-linked E46K mutant of α -synuclein is corrected by GM3 but not by GM1 gangliosides. *J. Mol. Biol.* 397, 202–218. doi: 10.1016/j.jmb.2010.01.046
- Donnelly, C. J., Zhang, P. W., Pham, J. T., Heusler, A. R., Mistry, N. A., Vidensky, S., et al. (2013). RNA toxicity from the ALS/FTD C9ORF72 expansion is mitigated by antisense intervention. *Neuron* 80, 415–428. doi: 10.1016/j.neuron.2013.10.015
- Duennwald, M. L., and Lindquist, S. (2008). Impaired ERAD and ER stress are early and specific events in polyglutamine toxicity. *Genes Dev.* 22, 3308–3319. doi: 10.1101/gad.1673408
- Ellis, J. (1987). Proteins as molecular chaperones. *Nature* 328, 378–379. doi: 10.1038/328378a0
- Ellis, R. J., and Hartl, F. U. (1999). Principles of protein folding in the cellular environment. *Curr. Opin. Struct. Biol.* 9, 102–110. doi: 10.1016/S0959-440X(99)80013-X
- Escusa-Toret, S., Vonk, W. I., and Frydman, J. (2013). Spatial sequestration of misfolded proteins by a dynamic chaperone pathway enhances cellular fitness during stress. *Nat. Cell Biol.* 15, 1231–1243. doi: 10.1038/ncb2838
- Esteras-Chopo, A., Serrano, L., and López de la Paz, M. (2005). The amyloid stretch hypothesis: recruiting proteins toward the dark side. *Proc. Natl. Acad. Sci. U.S.A.* 102, 16672–16677. doi: 10.1073/pnas.0505905102
- Falk, R. H., Comenzo, R. L., and Skinner, M. (1997). The systemic amyloidoses. *N.Engl. J. Med.* 337, 898–909. doi: 10.1056/NEJM199709253371306
- Falson, S. F., Meyer, N. H., Schrank, E., Leitinger, G., Pham, C. L., Fodero-Tavoletti, M. T., et al. (2012). SERF protein is a direct modifier of amyloid fiber assembly. *Cell Rep.* 2, 358–371. doi: 10.1016/j.celrep.2012.06.012
- Fargnoli, J., Kunisada, T., Fornace, A. J. Jr., Schneider, E. L., and Holbrook, N. J. (1990). Decreased expression of heat shock protein 70 mRNA and protein after heat treatment in cells of aged rats. *Proc. Natl. Acad. Sci. U.S.A.* 87, 846–850. doi: 10.1073/pnas.87.2.846
- Fernandez-Escamilla, A.-M., Rousseau, F., Schymkowitz, J., and Serrano, L. (2004). Prediction of sequence-dependent and mutational effects on the aggregation of peptides and proteins. *Nat. Biotechnol.* 22, 1302–1306. doi: 10.1038/nbt1012
- Ferrington, D. A., Husom, A. D., and Thompson, L. V. (2005). Altered proteasome structure, function, and oxidation in aged muscle. *FASEB J.* 19, 644–646. doi: 10.1096/fj.04-2578fj
- Fioriti, L., Myers, C., Huang, Y. Y., Li, X., Stephan, J. S., Trifilieff, P., et al. (2015). The persistence of hippocampal-based memory requires protein synthesis mediated by the prion-like protein CPEB3. *Neuron* 86, 1433–1448. doi: 10.1016/j.neuron.2015.05.021
- Flower, T. R., Chesnokova, L. S., Froelich, C. A., Dixon, C., and Witt, S. N. (2005). Heat shock prevents alpha-synuclein-induced apoptosis in a yeast model of Parkinson's disease. *J. Mol. Biol.* 351, 1081–1100. doi: 10.1016/j.jmb.2005.06.060
- Fowler, D. M., Koulov, A. V., Balch, W. E., and Kelly, J. W. (2007). Functional amyloid – from bacteria to humans. *Trends Biochem. Sci.* 32, 217–224. doi: 10.1016/j.tibs.2007.03.003
- Fowler, S. W., Chiang, A. C., Savjani, R. R., Larson, M. E., Sherman, M. A., Schuler, D. R., et al. (2014). Genetic modulation of soluble A β rescues cognitive and synaptic impairment in a mouse model of Alzheimer's disease. *J. Neurosci.* 34, 7871–7885. doi: 10.1523/JNEUROSCI.0572-14.2014
- Fraser, H., and Dickinson, A. G. (1973). Scrapie in mice. Agent-strain differences in the distribution and intensity of grey matter vacuolation. *J. Comp. Pathol.* 83, 29–40. doi: 10.1016/0021-9975(73)90024-8
- Freibaum, B. D., Lu, Y., Lopez-Gonzalez, R., Kim, N. C., Almeida, S., Lee, K.-H., et al. (2015). GGGGCC repeat expansion in C0ORF72 compromises nucleocytoplasmic transport. *Nature* 525, 129–133. doi: 10.1038/nature14974
- Frontzek, K., Lutz, M. I., Aguzzi, A., Kovacs, G. G., and Budka, H. (2016). Amyloid- β pathology and cerebral amyloid angiopathy are frequent in iatrogenic Creutzfeldt-Jakob disease after dural grafting. *Swiss Med. Wkly.* 146:w14287. doi: 10.4414/smw.2016.14287
- Fukunaga, S., Ueno, H., Yamaguchi, T., Yano, Y., Hoshino, M., and Matsuzaki, K. (2012). GM1 cluster mediates formation of toxic A β fibrils by providing hydrophobic environments. *Biochemistry* 51, 8125–8131. doi: 10.1021/bi300839u
- Gao, X., Carroni, M., Nussbaum-Krammer, C., Mogk, A., Nillegoda, N. B., Szlachcic, A., et al. (2015). Human Hsp70 disaggregase reverses Parkinson's-linked α -synuclein amyloid fibrils. *Mol. Cell* 59, 781–793. doi: 10.1016/j.molcel.2015.07.012
- Gennarino, V. A., Singh, R. K., White, J. J., De Maio, A., Han, K., Kim, J.-Y., et al. (2015). Pumilio1 haploinsufficiency leads to SCA1-like neurodegeneration by increasing wild-type Ataxin1 levels. *Cell* 160, 1087–1098. doi: 10.1016/j.cell.2015.02.012
- Gerhard, A., Pavese, N., Hotton, G., Turkheimer, F., Es, M., Hammers, A., et al. (2006). *In vivo* imaging of microglial activation with [¹¹C](R)-PK11195 PET in idiopathic Parkinson's disease. *Neurobiol. Dis.* 21, 404–412. doi: 10.1016/j.nbd.2005.08.002
- Gething, M. J. (1999). Role and regulation of the ER chaperone BiP. *Semin. Cell Dev. Biol.* 10, 465–472. doi: 10.1006/scdb.1999.0318

- Gidalevitz, T., Ben-Zvi, A., Ho, K. H., Brignull, H. R., and Morimoto, R. I. (2006). Progressive disruption of cellular protein folding in models of polyglutamine diseases. *Science* 311, 1471–1474. doi: 10.1126/science.1124514
- Gillis, J., Schipper-Krom, S., Juenemann, K., Gruber, A., Coolen, S., van Den Nieuwendijk, R., et al. (2013). The DNAJB6 and DNAJB8 protein chaperones prevent intracellular aggregation of polyglutamine peptides. *J. Biol. Chem.* 288, 17225–17237. doi: 10.1074/jbc.M112.421685
- Glover, J. R., and Lindquist, S. (1998). Hsp104, Hsp70, and Hsp40: a novel chaperone system that rescues previously aggregated proteins. *Cell* 94, 73–82. doi: 10.1016/S0092-8674(00)81223-4
- Goate, A., Chartier-Harlin, M.-C., Mullan, M., Brown, J., Crawford, F., Fidani, L., et al. (1991). Segregation of a missense mutation in the amyloid precursor protein gene with familial Alzheimer's disease. *Nature* 349, 704–706. doi: 10.1038/349704a0
- Goedert, M., and Spillantini, M. G. (2006). A century of Alzheimer's disease. *Science* 314, 777–781. doi: 10.1126/science.1132814
- Gordon, S., and Taylor, P. R. (2005). Monocyte and macrophage heterogeneity. *Nat. Rev. Immunol.* 5, 953–964. doi: 10.1038/nri1733
- Griciuc, A., Serrano-Pozo, A., Parrado, A. R., Lesinski, A. N., Asselin, C. N., Mullin, K., et al. (2013). Alzheimer's disease risk gene CD33 inhibits microglial uptake of amyloid beta. *Neuron* 78, 631–643. doi: 10.1016/j.neuron.2013.04.014
- Guerreiro, R., Wojtas, A., Bras, J., Carrasquillo, M., Rogava, E., Majounie, E., et al. (2013). TREM2 variants in Alzheimer's disease. *N.Engl. J. Med.* 368, 117–127. doi: 10.1056/NEJMoa1211851
- Hageman, J., Rujano, M. A., van Waarde, M. A., Kakkar, V., Dirks, R. P., Govorukhina, N., et al. (2010). A DNAJB chaperone subfamily with HDAC-dependent activities suppresses toxic protein aggregation. *Mol. Cell* 37, 355–369. doi: 10.1016/j.molcel.2010.01.001
- Hall, D. M., Xu, L., Drake, V. J., Oberley, L. W., Oberley, T. D., Moseley, P. L., et al. (2000). Aging reduces adaptive capacity and stress protein expression in the liver after heat stress. *J. Appl. Physiol.* 89, 749–759.
- Halliday, M., and Mallucci, G. R. (2015). Review: modulating the unfolded protein response to prevent neurodegeneration and enhance memory. *Neuropathol. Appl. Neurobiol.* 41, 414–427. doi: 10.1111/nan.12211
- Halliday, M., Radford, H., and Mallucci, G. R. (2014). Prions: generation and spread versus neurotoxicity. *J. Biol. Chem.* 289, 19862–19868. doi: 10.1074/jbc.R114.568477
- Han, T. W., Kato, M., Xie, S., Wu, L. C., Mirzaei, H., Pei, J., et al. (2012). Cell-free formation of RNA granules: bound RNAs identify features and components of cellular assemblies. *Cell* 149, 768–779. doi: 10.1016/j.cell.2012.04.016
- Hanisch, U.-K., and Kettenmann, H. (2007). Microglia: active sensor and versatile effector cells in the normal and pathologic brain. *Nat. Neurosci.* 10, 1387–1394. doi: 10.1038/nn1997
- Hartl, F. U., and Hayer-Hartl, M. (2009). Converging concepts of protein folding *in vitro* and *in vivo*. *Nat. Struct. Mol. Biol.* 16, 574–581. doi: 10.1038/nsmb.1591
- Hartl, F. U., Bracher, A., and Hayer-Hartl, M. (2011). Molecular chaperones in protein folding and proteostasis. *Nature* 475, 324–332. doi: 10.1038/nature10317
- Hess, N. C., Carlson, D. J., Inder, J. D., Jesulola, E., MCFarlane, J. R., and Smart, N. A. (2016). Clinically meaningful blood pressure reductions with low intensity isometric handgrip exercise. A randomized trial. *Physiol. Res.* 65, 461–468.
- Hetz, C., and Mollereau, B. (2014). Disturbance of endoplasmic reticulum proteostasis in neurodegenerative diseases. *Nat. Rev. Neurosci.* 15, 233–249. doi: 10.1038/nrn3689
- Higuchi, S., Arai, H., Matsushita, S., Matsui, T., Kimpara, T., Takeda, A., et al. (1998). Mutation in the alpha-synuclein gene and sporadic Parkinson's disease, Alzheimer's disease, and dementia with lewy bodies. *Exp. Neurol.* 153, 164–166. doi: 10.1006/exnr.1998.6868
- Hsu, A.-L., Murphy, C. T., and Kenyon, C. (2003). Regulation of aging and age-related disease by DAF-16 and heat-shock factor. *Science* 300, 1142–1145. doi: 10.1126/science.1083701
- Jankowsky, J. L., Slunt, H. H., Gonzales, V., Savonenko, A. V., Wen, J. C., Jenkins, N. A., et al. (2005). Persistent amyloidosis following suppression of Abeta production in a transgenic model of Alzheimer disease. *PLoS Med.* 2:e355. doi: 10.1371/journal.pmed.0020355
- Jaunmuktane, Z., Mead, S., Ellis, M., Wadsworth, J. D. F., Nicoll, A. J., Kenny, J., et al. (2015). Evidence for human transmission of amyloid- β pathology and cerebral amyloid angiopathy. *Nature* 525, 247–250. doi: 10.1038/nature15369
- Johnston, J. A., Ward, C. L., and Kopito, R. R. (1998). Aggresomes: a cellular response to misfolded proteins. *J. Cell Biol.* 143, 1883–1898. doi: 10.1083/jcb.143.7.1883
- Jonsson, T., Stefansson, H., Steinberg, S., Jonsdottir, I., Jonsson, P. V., Snaedal, J., et al. (2013). Variant of TREM2 associated with the risk of Alzheimer's disease. *N.Engl. J. Med.* 368, 107–116. doi: 10.1056/NEJMoa1211103
- Jovičić, A., Mertens, J., Boeynaems, S., Bogaert, E., Chai, N., Yamada, S. B., et al. (2015). Modifiers of C9orf72 dipeptide repeat toxicity connect nucleocytoplasmic transport defects to FTD/ALS. *Nat. Neurosci.* 18, 1226–1229. doi: 10.1038/nn.4085
- Kaganovich, D., Kopito, R., and Frydman, J. (2008). Misfolded proteins partition between two distinct quality control compartments. *Nature* 454, 1088–1095. doi: 10.1038/nature07195
- Kakkar, V., Månsson, C., de Mattos, E. P., Bergink, S., van der Zwaag, M., van Waarde, M. A. W. H., et al. (2016). The S/T-rich motif in the DNAJB6 chaperone delays polyglutamine aggregation and the onset of disease in a mouse model. *Mol. Cell* 62, 272–283. doi: 10.1016/j.molcel.2016.03.017
- Kakkar, V., Meister-Broekema, M., Minoia, M., Carra, S., and Kampinga, H. H. (2014). Barcoding heat shock proteins to human diseases: looking beyond the heat shock response. *Dis. Model. Mech.* 7, 421–434. doi: 10.1242/dmm.014563
- Kato, M., Han, T. W., Xie, S., Shi, K., Du, X., Wu, L. C., et al. (2012). Cell-free formation of RNA granules: low complexity sequence domains form dynamic fibers within hydrogels. *Cell* 149, 753–767. doi: 10.1016/j.cell.2012.04.017
- Kaushik, S., and Cuervo, A. M. (2015). Proteostasis and aging. *Nat. Med.* 21, 1406–1415. doi: 10.1038/nm.4001
- Keller, J. N., Huang, F. F., and Markesbery, W. R. (2000). Decreased levels of proteasome activity and proteasome expression in aging spinal cord. *Neuroscience* 98, 149–156. doi: 10.1016/S0306-4522(00)00067-1
- Khan, M. R., Li, L., Pérez-Sánchez, C., Saraf, A., Florens, L., Slaughter, B. D., et al. (2015). Amyloidogenic oligomerization transforms drosophila Orb2 from a translation repressor to an activator. *Cell* 163, 1468–1483. doi: 10.1016/j.cell.2015.11.020
- Kiffin, R., Christian, C., Knecht, E., and Cuervo, A. M. (2004). Activation of chaperone-mediated autophagy during oxidative stress. *Mol. Biol. Cell* 15, 4829–4840. doi: 10.1091/mbc.E04-06-0477
- Kim, M., Lee, H. S., LaForet, G., McIntyre, C., Martin, E. J., Chang, P., et al. (1999). Mutant huntingtin expression in clonal striatal cells: dissociation of inclusion formation and neuronal survival by caspase inhibition. *J. Neurosci.* 19, 964–973.
- Kim, Y. E., Hipp, M. S., Bracher, A., Hayer-Hartl, M., and Ulrich Hartl, F. U. (2013). Molecular chaperone functions in protein folding and proteostasis. *Annu. Rev. Biochem.* 82, 323–355. doi: 10.1146/annurev-biochem-060208-092442
- Kitada, T., Asakawa, S., Hattori, N., Matsumine, H., Yamamura, Y., Minoshima, S., et al. (1998). Mutations in the parkin gene cause autosomal recessive juvenile parkinsonism. *Nature* 392, 605–608. doi: 10.1038/33416
- Klucken, J., Shin, Y., Masliah, E., Hyman, B. T., and McLean, P. J. (2004). Hsp70 reduces alpha-synuclein aggregation and toxicity. *J. Biol. Chem.* 279, 25497–25502. doi: 10.1074/jbc.M400255200
- Knowles, T. P., Vendruscolo, M., and Dobson, C. M. (2014). The amyloid state and its association with protein misfolding diseases. *Nat. Rev. Mol. Cell Biol.* 15, 384–396. doi: 10.1038/nrm3810
- Koga, H., and Cuervo, A. M. (2011). Chaperone-mediated autophagy dysfunction in the pathogenesis of neurodegeneration. *Neurobiol. Dis.* 43, 29–37. doi: 10.1016/j.nbd.2010.07.006
- Koga, H., Kaushik, S., and Cuervo, A. M. (2011). Protein homeostasis and aging: the importance of exquisite quality control. *Ageing Res. Rev.* 10, 205–215. doi: 10.1016/j.arr.2010.02.001
- Kordower, J. H., Chu, Y., Hauser, R. A., Freeman, T. B., and Olanow, C. W. (2008). Lewy body-like pathology in long-term embryonic nigral transplants in Parkinson's disease. *Nat. Med.* 14, 504–506. doi: 10.1038/nm1747
- Kwiatkowski, T. J. Jr., Bosco, D. A., Leclerc, A. L., Tamrazian, E., Vanderburg, C. R., Russ, C., et al. (2009). Mutations in the FUS/TLS gene on chromosome 16 cause familial amyotrophic lateral sclerosis. *Science* 323, 1205–1208. doi: 10.1126/science.1166066

- Labbadia, J., and Morimoto, R. I. (2015). The biology of proteostasis in aging and disease. *Annu. Rev. Biochem.* 84, 435–464. doi: 10.1146/annurev-biochem-060614-033955
- Lansbury, P. T., and Lashuel, H. A. (2006). A century-old debate on protein aggregation and neurodegeneration enters the clinic. *Nature* 443, 774–779. doi: 10.1038/nature05290
- Lashuel, H. A., and Lansbury, P. T. (2006). Are amyloid diseases caused by protein aggregates that mimic bacterial pore-forming toxins? *Q. Rev. Biophys.* 39:167. doi: 10.1017/S0033583506004422
- Lashuel, H. A., Hartley, D. M., Balakhaneh, D., Aggarwal, A., Teichberg, S., and Callaway, D. J. E. (2002a). New class of inhibitors of amyloid-beta fibril formation. Implications for the mechanism of pathogenesis in Alzheimer's disease. *J. Biol. Chem.* 277, 42881–42890. doi: 10.1074/jbc.M206593200
- Lashuel, H. A., Hartley, D., Petre, B. M., Walz, T., and Lansbury, P. T. (2002b). Neurodegenerative disease: amyloid pores from pathogenic mutations. *Nature* 418, 291–291. doi: 10.1038/418291a
- Lashuel, H. A., Petre, B. M., Wall, J., Simon, M., Nowak, R. J., Walz, T., et al. (2002c). α -synuclein, especially the parkinson's disease-associated mutants, forms pore-like annular and tubular protofibrils. *J. Mol. Biol.* 322, 1089–1102. doi: 10.1016/S0022-2836(02)00735-0
- Levy-Lahad, E., Wasco, W., Poorkaj, P., Romano, D. M., Oshima, J., Pettingell, W. H., et al. (1995). Candidate gene for the chromosome 1 familial Alzheimer's disease locus. *Science* 269, 973–977. doi: 10.1126/science.7638622
- Li, J.-Y., Englund, E., Holton, J. L., Soulet, D., Hagell, P., Lees, A. J., et al. (2008). Lewy bodies in grafted neurons in subjects with Parkinson's disease suggest host-to-graft disease propagation. *Nat. Med.* 14, 501–503. doi: 10.1038/nm1746
- Lindberg, L., Shorter, J., Wiseman, R. L., Chiti, F., Dickey, C. A., and McLean, P. J. (2015). Chaperones in neurodegeneration. *J. Neurosci.* 35, 13853–13859. doi: 10.1523/JNEUROSCI.2600-15.2015
- Lindquist, S., and Craig, E. A. (1988). The heat-shock proteins. *Annu. Rev. Genet.* 22, 631–677. doi: 10.1146/annurev.ge.22.120188.003215
- López-Otín, C., Blasco, M. A., Partridge, L., Serrano, M., and Kroemer, G. (2013). The hallmarks of aging. *Cell* 153, 1194–1217. doi: 10.1016/j.cell.2013.05.039
- Lu, J.-X., Qiang, W., Yau, W.-M., Schwitters, C. D., Meredith, S. C., and Tycko, R. (2013). Molecular structure of β -amyloid fibrils in Alzheimer's disease brain tissue. *Cell* 154, 1257–1268. doi: 10.1016/j.cell.2013.08.035
- Luk, K. C., Kehm, V. M., Zhang, B., O'Brien, P., Trojanowski, J. Q., and Lee, V. M. Y. (2012b). Intracerebral inoculation of pathological α -synuclein initiates a rapidly progressive neurodegenerative α -synucleinopathy in mice. *J. Exp. Med.* 209, 975–986. doi: 10.1084/jem.20112457
- Luk, K. C., Kehm, V., Carroll, J., Zhang, B., Brien, P. O., Trojanowski, J. Q., et al. (2012a). Pathological α -synuclein transmission initiates Parkinson-like neurodegeneration in nontransgenic mice. *Science* 338, 949–954. doi: 10.1126/science.1227157
- Madeo, F., Zimmermann, A., Maiuri, M. C., and Kroemer, G. (2015). Essential role for autophagy in life span extension. *J. Clin. Invest.* 125, 85–93. doi: 10.1172/JCI73946
- Mahul-Mellier, A.-L., Vercruyse, F., Maco, B., Ait-Bouziad, N., De Roo, M., Muller, D., et al. (2015). Fibril growth and seeding capacity play key roles in α -synuclein-mediated apoptotic cell death. *Cell Death Differ.* 22, 2107–2122. doi: 10.1038/cdd.2015.79
- Maji, S. K., Perrin, M. H., Sawaya, M. R., Jessberger, S., Vadodaria, K., Rissman, R. A., et al. (2009). Functional amyloids as natural storage of peptide hormones in pituitary secretory granules. *Science* 325, 328–332. doi: 10.1126/science.1173155
- Majumdar, A., Cesario, W. C., White-Grindley, E., Jiang, H., Ren, F., Khan, M. R., et al. (2012). Critical role of amyloid-like oligomers of *Drosophila* Orb2 in the persistence of memory. *Cell* 148, 515–529. doi: 10.1016/j.cell.2012.01.004
- Månsson, C., Arosio, P., Hussein, R., Kampinga, H. H., Hashem, R. M., Boelens, W. C., et al. (2014a). Interaction of the molecular chaperone DNAJB6 with growing amyloid-beta 42 (A β 42) aggregates leads to sub-stoichiometric inhibition of amyloid formation. *J. Biol. Chem.* 289, 31066–31076. doi: 10.1074/jbc.M114.595124
- Månsson, C., Kakkar, V., Monsellier, E., Sourigues, Y., Härmak, J., Kampinga, H. H., et al. (2014b). DNAJB6 is a peptide-binding chaperone which can suppress amyloid fibrillation of polyglutamine peptides at substoichiometric molar ratios. *Cell Stress Chaperones* 19, 227–239. doi: 10.1007/s12192-013-0448-5
- Marzban, L., Trigo-Gonzalez, G., and Verchere, C. B. (2005). Processing of pro-islet amyloid polypeptide in the constitutive and regulated secretory pathways of β Cells. *Mol. Endocrinol.* 19, 2154–2163. doi: 10.1210/me.2004-0407
- Masuda-Suzukake, M., Nonaka, T., Hosokawa, M., Oikawa, T., Arai, T., Akiyama, H., et al. (2013). Prion-like spreading of pathological α -synuclein in brain. *Brain* 136, 1128–1138. doi: 10.1093/brain/awt037
- Maurer-Stroh, S., Debulpaep, M., Kuemmerer, N., Lopez de la Paz, M., Martins, I. C., Reumers, J., et al. (2010). Exploring the sequence determinants of amyloid structure using position-specific scoring matrices. *Nat. Methods* 7, 237–242. doi: 10.1038/nmeth.1432
- McGlinchey, R. P., Shewmaker, F., McPhie, P., Monterroso, B., Thurber, K., and Wickner, R. B. (2009). The repeat domain of the melanosome fibril protein Pmel17 forms the amyloid core promoting melanin synthesis. *Proc. Natl. Acad. Sci. U.S.A.* 106, 13731–13736. doi: 10.1073/pnas.0906509106
- Meyer-Luehmann, M., Coomaraswamy, J., Bolmont, T., Kaeser, S., Schaefer, C., Kilger, E., et al. (2006). Exogenous induction of cerebral beta-amyloidogenesis is governed by agent and host. *Science* 313, 1781–1784. doi: 10.1126/science.1131864
- Molliex, A., Temirov, J., Lee, J., Coughlin, M., Kanagaraj, A. P., Kim, H. J., et al. (2015). Phase separation by low complexity domains promotes stress granule assembly and drives pathological fibrillization. *Cell* 163, 123–133. doi: 10.1016/j.cell.2015.09.015
- Morimoto, R. I. (2008). Proteotoxic stress and inducible chaperone networks in neurodegenerative disease and aging. *Genes Dev.* 22, 1427–1438. doi: 10.1101/gad.1657108
- Morley, J. F., and Morimoto, R. I. (2003). Regulation of longevity in *Caenorhabditis elegans* by heat shock factor and molecular chaperones. *Mol. Biol. Cell* 15, 657–664. doi: 10.1091/mbc.E03-07-0532
- Mougenot, A. L., Nicot, S., Bencsik, A., Morignat, E., Verchère, J., Lakhdar, L., et al. (2012). Prion-like acceleration of a synucleinopathy in a transgenic mouse model. *Neurobiol. Aging* 33, 2225–2228. doi: 10.1016/j.neurobiolaging.2011.06.022
- Murrell, J., Farlow, M., Ghetti, B., and Benson, M. D. (1991). A mutation in the amyloid precursor protein associated with hereditary Alzheimer's disease. *Science* 254, 97–99. doi: 10.1126/science.1925564
- Nillegoda, N. B., and Bukau, B. (2015). Metazoan Hsp70-based protein disaggregases: emergence and mechanisms. *Front. Mol. Biosci.* 2:57. doi: 10.3389/fmolb.2015.00057
- Oesch, B., Westaway, D., Wälchli, M., McKinley, M. P., Kent, S. B., Aebersold, R., et al. (1985). A cellular gene encodes scrapie PrP 27–30 protein. *Cell* 40, 735–746. doi: 10.1016/0092-8674(85)90333-2
- Ohtake, H., Limprasert, P., Fan, Y., Onodera, O., Kakita, A., Takahashi, H., et al. (2004). Beta-synuclein gene alterations in dementia with Lewy bodies. *Neurology* 63, 805–811. doi: 10.1212/01.WNL.0000139870.14385.3C
- Olzscha, H., Schermann, S. M., Woerner, A. C., Pinkert, S., Hecht, M. H., Tartaglia, G. G., et al. (2011). Amyloid-like aggregates sequester numerous metastable proteins with essential cellular functions. *Cell* 144, 67–78. doi: 10.1016/j.cell.2010.11.050
- Opie, E. L. (1901). The relation of diabetes mellitus to lesions of the pancreas. Hyaline degeneration of the islands of langerhans. *J. Exp. Med.* 5, 527–540. doi: 10.1084/jem.5.5.527
- Oropesa-Nuñez, R., Seghezza, S., Dante, S., Diaspro, A., Cascella, R., Cecchi, C., et al. (2016). Interaction of toxic and non-toxic HypF-N oligomers with lipid bilayers investigated at high resolution with atomic force microscopy. *Oncotarget* 7, 20–23. doi: 10.18632/oncotarget.10449
- Pahlavani, M. A., Harris, M. D., Moore, S. A., Weindruch, R., and Richardson, A. (1995). The expression of heat shock protein 70 decreases with age in lymphocytes from rats and rhesus monkeys. *Exp. Cell Res.* 218, 310–318. doi: 10.1006/excr.1995.1160
- Park, S.-H., Kukushkin, Y., Gupta, R., Chen, T., Konagai, A., Hipp, M. S., et al. (2013). PolyQ proteins interfere with nuclear degradation of cytosolic proteins by sequestering the Sis1 chaperone. *Cell* 154, 134–145. doi: 10.1016/j.cell.2013.06.003
- Patel, A., Lee, H. O., Jawerth, L., Maharana, S., Drechsel, D., Alberti, S., et al. (2015). A liquid-to-solid phase transition of the ALS protein FUS accelerated by disease mutation. *Cell* 162, 1066–1077. doi: 10.1016/j.cell.2015.07.047
- Paz Gavilán, M., Vela, J., Castaño, A., Ramos, B., del Río, J. C., Vitorica, J., et al. (2006). Cellular environment facilitates protein

- accumulation in aged rat hippocampus. *Neurobiol. Aging* 27, 973–982. doi: 10.1016/j.neurobiolaging.2005.05.010
- Perng, M. D., Muchowski, P. J., van Den IJssel, P., Wu, G. J., Hutchesont, A. M., Clark, J. I., et al. (1999). The cardiomyopathy and lens cataract mutation in alphaB-crystallin alters its protein structure, chaperone activity, and interaction with intermediate filaments *in vitro*. *J. Biol. Chem.* 274, 33235–33243. doi: 10.1074/jbc.274.47.33235
- Perry, V. H., Nicoll, J. A., and Holmes, C. (2010). Microglia in neurodegenerative disease. *Nat. Rev. Neurol.* 6, 193–201. doi: 10.1038/nrneuro.2010.17
- Pierce, A., Podlutska, N., Halloran, J. J., Hussong, S. A., Lin, P.-Y., Burbank, R., et al. (2013). Over-expression of heat shock factor 1 phenocopies the effect of chronic inhibition of TOR by rapamycin and is sufficient to ameliorate Alzheimer's-like deficits in mice modeling the disease. *J. Neurochem.* 124, 880–893. doi: 10.1111/jnc.12080
- Pierce, A., Wei, R., Halade, D., Yoo, S.-E., Ran, Q., and Richardson, A. (2010). A Novel mouse model of enhanced proteostasis: full-length human heat shock factor 1 transgenic mice. *Biochem. Biophys. Res. Commun.* 402, 59–65. doi: 10.1016/j.bbrc.2010.09.111
- Polymeropoulos, M. H., Lavedan, C., Leroy, E., Ide, S. E., Dehejia, A., Dutra, A., et al. (1997). Mutation in the α -synuclein gene identified in families with Parkinson's disease. *Science* 276, 2045–2047. doi: 10.1126/science.276.5321.2045
- Radwan, M., Wood, R. J., Sui, X., and Hatters, D. M. (2017). When proteostasis goes bad: protein aggregation in the cell. *IUBMB Life* 69, 49–54. doi: 10.1002/iub.1597
- Ramaswami, M., Taylor, J. P., and Parker, R. (2013). Altered ribostasis: RNA-protein granules in degenerative disorders. *Cell* 154, 727–736. doi: 10.1016/j.cell.2013.07.038
- Rampelt, H., Kirstein-Miles, J., Nilleghoda, N. B., Chi, K., Scholz, S. R., Morimoto, R. I., et al. (2012). Metazoan Hsp70 machines use Hsp110 to power protein disaggregation. *EMBO J.* 31, 4221–4235. doi: 10.1038/emboj.2012.264
- Renton, A. E., Majounie, E., Waite, A., Simón-Sánchez, J., Rollinson, S., Gibbs, J. R., et al. (2011). A hexanucleotide repeat expansion in C9ORF72 is the cause of chromosome 9p21-linked ALS-FTD. *Neuron* 72, 257–268. doi: 10.1016/j.neuron.2011.09.010
- Rhein, V., Song, X., Wiesner, A., Ittner, L. M., Baysang, G., Meier, F., et al. (2009). Amyloid-beta and tau synergistically impair the oxidative phosphorylation system in triple transgenic Alzheimer's disease mice. *Proc. Natl. Acad. Sci. U.S.A.* 106, 20057–20062. doi: 10.1073/pnas.0905529106
- Ridley, R. M., Baker, H. F., Windle, C. P., and Cummings, R. M. (2006). Very long term studies of the seeding of beta-amyloidosis in primates. *J. Neural. Transm.* 113, 1243–1251. doi: 10.1007/s00702-005-0385-2
- Rogaev, E. I. (1995). Familial Alzheimer's disease in kindreds with missense mutations in a gene on chromosome 1 related to the Alzheimer's disease type 3 gene. *Nature* 376, 775–778. doi: 10.1038/376775a0
- Rosen, D. R., Siddique, T., Patterson, D., Figlewicz, D. A., Sapp, P., Hentati, A., et al. (1993). Mutations in Cu/Zn superoxide dismutase gene are associated with familial amyotrophic lateral sclerosis. *Nature* 362, 59–62. doi: 10.1038/362059a0
- Rothenberg, C., Srinivasan, D., Mah, L., Kaushik, S., Peterhoff, C. M., Ugolino, J., et al. (2010). Ubiquitin functions in autophagy and is degraded by chaperone-mediated autophagy. *Hum. Mol. Genet.* 19, 3219–3232. doi: 10.1093/hmg/ddq231
- Sanders, D. W., Kaufman, S. K., DeVos, S. L., Sharma, A. M., Mirbaha, H., Li, A., et al. (2014). Distinct tau prion strains propagate in cells and mice and define different tauopathies. *Neuron* 82, 1271–1288. doi: 10.1016/j.neuron.2014.04.047
- Scheper, W., and Hoozemans, J. J. (2015). The unfolded protein response in neurodegenerative diseases: a neuropathological perspective. *Acta Neuropathol.* 130, 315–331. doi: 10.1007/s00401-015-1462-8
- Scherzinger, E., Sittler, A., Schweiger, K., Heiser, V., Lurz, R., Hasenbank, R., et al. (1999). Self-assembly of polyglutamine-containing huntingtin fragments into amyloid-like fibrils: implications for Huntington's disease pathology. *Proc. Natl. Acad. Sci. U.S.A.* 96, 4604–4609. doi: 10.1073/pnas.96.8.4604
- Sharma, S. K., and Priya, S. (2016). Expanding role of molecular chaperones in regulating α -synuclein misfolding; implications in Parkinson's disease. *Cell. Mol. Life Sci.* 74, 617–629. doi: 10.1007/s00118-016-2340-9
- Shelkovnikova, T. A., Robinson, H. K., Southcombe, J. A., Ninkina, N., and Buchman, V. L. (2014). Multistep process of FUS aggregation in the cell cytoplasm involves RNA-dependent and RNA-independent mechanisms. *Hum. Mol. Genet.* 23, 5211–5226. doi: 10.1093/hmg/ddu243
- Sherrington, R., Rogaev, E. I., Liang, Y., Rogaeva, E. A., Levesque, G., Ikeda, M., et al. (1995). Cloning of a gene bearing missense mutations in early-onset familial Alzheimer's disease. *Nature* 375, 754–760. doi: 10.1038/375754a0
- Shin, J. Y., Fang, Z. H., Yu, Z. X., Wang, C. E., Li, S. H., and Li, X. J. (2005). Expression of mutant huntingtin in glial cells contributes to neuronal excitotoxicity. *J. Cell Biol.* 171, 1001–1012. doi: 10.1083/jcb.200508072
- Shorter, J. (2011). The mammalian disaggregase machinery: Hsp110 synergizes with Hsp70 and Hsp40 to catalyze protein disaggregation and reactivation in a cell-free system. *PLoS ONE* 6:e26319. doi: 10.1371/journal.pone.0026319
- Singh, R., Kølvrå, S., Bross, P., Jensen, U. B., Gregersen, N., Tan, Q., et al. (2006). Reduced heat shock response in human mononuclear cells during aging and its association with polymorphisms in HSP70 genes. *Cell Stress Chaperones* 11, 208–215. doi: 10.1379/CSC-184R.1
- Singleton, A. B., Farrer, M., Johnson, J., Singleton, A., and Hague, S., Kachergus, J., et al. (2003). α -Synuclein locus triplication causes Parkinson's disease. *Science* 302:841. doi: 10.1126/science.1090278
- Sipe, J. D., and Cohen, A. S. (2000). Review: history of the amyloid fibril. *J. Struct. Biol.* 130, 88–98. doi: 10.1006/jsbi.2000.4221
- Sokolowski, F., Modler, A. J., Masuch, R., Zirwer, D., Baier, M., Lutsch, G., et al. (2003). Formation of critical oligomers is a key event during conformational transition of recombinant syrian hamster prion protein. *J. Biol. Chem.* 278, 40481–40492. doi: 10.1074/jbc.M304391200
- Sontag, E. M., Vonk, W. I., and Frydman, J. (2014). Sorting out the trash: the spatial nature of eukaryotic protein quality control. *Curr. Opin. Cell Biol.* 26, 139–146. doi: 10.1016/j.ccb.2013.12.006
- Specht, S., Miller, S. B., Mogk, A., and Bukau, B. (2011). Hsp42 is required for sequestration of protein aggregates into deposition sites in *Saccharomyces cerevisiae*. *J. Cell Biol.* 195, 617–629. doi: 10.1083/jcb.201106037
- Stefani, M., and Dobson, C. M. (2003). Protein aggregation and aggregate toxicity: new insights into protein folding, misfolding diseases and biological evolution. *J. Mol. Med.* 81, 678–699. doi: 10.1007/s00109-003-0464-5
- Stöckl, M. T., Zijlstra, N., and Subramaniam, V. (2013). α -Synuclein oligomers: an amyloid pore? Insights into mechanisms of α -synuclein oligomer-lipid interactions. *Mol. Neurobiol.* 47, 613–621. doi: 10.1007/s12035-012-8331-4
- Stöhr, J., Watts, J. C., Mensinger, Z. L., Oehler, A., Grillo, S. K., DeArmond, S. J., et al. (2012). Purified and synthetic Alzheimer's amyloid beta (A β) prions. *Proc. Natl. Acad. Sci. U.S.A.* 109, 11025–11030. doi: 10.1073/pnas.1206555109
- Taylor, R. C. (2016). Aging and the UPR(ER). *Brain Res.* 1648, 588–593. doi: 10.1016/j.brainres.2016.04.017
- Taylor, R. C., and Dillin, A. (2013). XBP-1 is a cell-nonautonomous regulator of stress resistance and longevity. *Cell* 153, 1435–1447. doi: 10.1016/j.cell.2013.05.042
- Torrente, M. P., and Shorter, J. (2013). The metazoan protein disaggregase and amyloid depolymerase system: Hsp110, Hsp70, Hsp40, and small heat shock proteins. *Prion* 7, 457–463. doi: 10.4161/pri.27531
- Tyedmers, J., Mogk, A., and Bukau, B. (2010). Cellular strategies for controlling protein aggregation. *Nat. Rev. Mol. Cell Biol.* 11, 777–788. doi: 10.1038/nrm2993
- Uversky, V. N. (2017). Intrinsically disordered proteins in overcrowded milieu: membrane-less organelles, phase separation, and intrinsic disorder. *Curr. Opin. Struct. Biol.* 44, 18–30. doi: 10.1016/j.sbi.2016.10.015
- Valente, E. M., Bentivoglio, A. R., Dixon, P. H., Ferraris, A., Ialongo, T., Frontali, M., et al. (2001). Localization of a novel locus for autosomal recessive early-onset parkinsonism, PARK6, on human chromosome 1p35–p36. *Am. J. Hum. Genet.* 68, 895–900. doi: 10.1086/319522
- van Ham, T. J., Holmberg, M. A., van der Goot, A. T., Teuling, E., Garcia-Arencibia, M., and Kim, H. E., et al. (2010). Identification of MOAG-4/SERF as a regulator of age-related proteotoxicity. *Cell* 142, 601–612. doi: 10.1016/j.cell.2010.07.020
- Ventura, S., Zurdo, J., Narayanan, S., Parreño, M., Mangues, R., Reif, B., et al. (2004). Short amino acid stretches can mediate amyloid formation in globular proteins: the Src homology 3 (SH3) case. *Proc. Natl. Acad. Sci. U.S.A.* 101, 7258–7263. doi: 10.1073/pnas.0308249101

- Vicart, P., Caron, A., Guicheney, P., Li, Z., Prévost, M. C., Faure, A., et al. (1998). A missense mutation in the alphaB-crystallin chaperone gene causes a desmin-related myopathy. *Nat. Genet.* 20, 92–95. doi: 10.1038/1765
- Wacker, J. L., Zareie, M. H., Fong, H., Sarikaya, M., and Muchowski, P. J. (2004). Hsp70 and Hsp40 attenuate formation of spherical and annular polyglutamine oligomers by partitioning monomer. *Nat. Struct. Mol. Biol.* 11, 1215–1222. doi: 10.1038/nsmb860
- Walker, G. A., White, T. M., McColl, G., Jenkins, N. L., Babich, S., Candido, E. P., et al. (2001). Heat shock protein accumulation is upregulated in a long-lived mutant of *Caenorhabditis elegans*. *J. Gerontol. A Biol. Sci. Med. Sci.* 56, 281–287. doi: 10.1093/gerona/56.7.B281
- Watt, B., van Niel, G., Raposo, G., and Marks, M. S. (2013). PMEL: a pigment cell-specific model for functional amyloid formation. *Pigment Cell Melanoma Res.* 26, 300–315. doi: 10.1111/pcmr.12067
- Watts, J. C., Condello, C., Stöhr, J., Oehler, A., Lee, J., DeArmond, S. J., et al. (2014). Serial propagation of distinct strains of A β prions from Alzheimer's disease patients. *Proc. Natl. Acad. Sci. U.S.A.* 111, 10323–10328. doi: 10.1073/pnas.1408900111
- Westermarck, G. T., and Westermarck, P. (2013). Islet amyloid polypeptide and diabetes. *Curr. Protein Pept. Sci.* 14, 330–337. doi: 10.2174/13892037113149990050
- Westermarck, P., Engström, U., Westermarck, G. T., Johnson, K. H., Permerth, J., and Betsholtz, C. (1989). Islet amyloid polypeptide (IAPP) and pro-IAPP immunoreactivity in human islets of Langerhans. *Diabetes Res. Clin. Pract.* 7, 219–226. doi: 10.1016/0168-8227(89)90008-9
- Wilhelmsen, K. C., Lynch, T., Pavlou, E., Higgins, M., and Nygaard, T. G. (1994). Localization of disinhibition-dementia-parkinsonism-amyotrophy complex to 17q21-22. *Am. J. Hum. Genet.* 55, 1159–1165.
- Winkler, J., Tyedmers, J., Bukau, B., and Mogk, A. (2012). Chaperone networks in protein disaggregation and prion propagation. *J. Struct. Biol.* 179, 152–160. doi: 10.1016/j.jsb.2012.05.002
- Wiseman, F. K., Al-Janabi, T., Hardy, J., Karmiloff-Smith, A., Nizetic, D., Tybulewicz, V. L., et al. (2015). A genetic cause of Alzheimer disease: mechanistic insights from Down syndrome. *Nat. Rev. Neurosci.* 16, 564–574. doi: 10.1038/nrn3983
- Woerner, A. C., Frottin, F., Hornburg, D., Feng, L. R., Meissner, F., Patra, M., et al. (2016). Cytoplasmic protein aggregates interfere with nucleocytoplasmic transport of protein and RNA. *Science* 351, 173–176. doi: 10.1126/science.aad2033
- Ye, L., Fritschi, S. K., Schelle, J., Obermüller, U., Degenhardt, K., Kaeser, S. A., et al. (2015). Persistence of A β seeds in APP null mouse brain. *Nat. Neurosci.* 18, 16–19. doi: 10.1038/nn.4117
- Yerbury, J. J., Ooi, L., Dillin, A., Saunders, D. N., Hatters, D. M., Beart, P. M., et al. (2016). Walking the tightrope: proteostasis and neurodegenerative disease. *J. Neurochem.* 137, 489–505. doi: 10.1111/jnc.13575
- Zhang, K., Donnelly, C. J., Haeusler, A. R., Grima, J. C., Machamer, J. B., Steinwald, P., et al. (2015). The C9orf72 repeat expansion disrupts nucleocytoplasmic transport. *Nature* 525, 56–61. doi: 10.1038/nature14973
- Zimprich, A., Biskup, S., Leitner, P., Lichtner, P., Farrer, M., Lincoln, S., et al. (2004). Mutations in LRRK2 cause autosomal-dominant parkinsonism with pleomorphic pathology. *Neuron* 44, 601–607. doi: 10.1016/j.neuron.2004.11.005

Conflict of Interest Statement: The authors declare that the research was conducted in the absence of any commercial or financial relationships that could be construed as a potential conflict of interest.

Copyright © 2017 Stroo, Koopman, Nollen and Mata-Cabana. This is an open-access article distributed under the terms of the Creative Commons Attribution License (CC BY). The use, distribution or reproduction in other forums is permitted, provided the original author(s) or licensor are credited and that the original publication in this journal is cited, in accordance with accepted academic practice. No use, distribution or reproduction is permitted which does not comply with these terms.