

RESEARCH

Open Access

# The potential role of the antioxidant and detoxification properties of glutathione in autism spectrum disorders: a systematic review and meta-analysis

Penelope AE Main<sup>1,2\*</sup>, Manya T Angley<sup>1</sup>, Catherine E O'Doherty<sup>1</sup>, Philip Thomas<sup>2</sup> and Michael Fenech<sup>2</sup>

## Abstract

**Background:** Glutathione has a wide range of functions; it is an endogenous anti-oxidant and plays a key role in the maintenance of intracellular redox balance and detoxification of xenobiotics. Several studies have indicated that children with autism spectrum disorders may have altered glutathione metabolism which could play a key role in the condition.

**Methods:** A systematic literature review and meta-analysis was conducted of studies examining metabolites, interventions and/or genes of the glutathione metabolism pathways i.e. the  $\gamma$ -glutamyl cycle and trans-sulphuration pathway in autism spectrum disorders.

**Results:** Thirty nine studies were included in the review comprising an *in vitro* study, thirty two metabolite and/or co-factor studies, six intervention studies and six studies with genetic data as well as eight studies examining enzyme activity.

**Conclusions:** The review found evidence for the involvement of the  $\gamma$ -glutamyl cycle and trans-sulphuration pathway in autistic disorder is sufficiently consistent, particularly with respect to the glutathione redox ratio, to warrant further investigation to determine the significance in relation to clinical outcomes. Large, well designed intervention studies that link metabolites, cofactors and genes of the  $\gamma$ -glutamyl cycle and trans-sulphuration pathway with objective behavioural outcomes in children with autism spectrum disorders are required. Future risk factor analysis should include consideration of multiple nutritional status and metabolite biomarkers of pathways linked with the  $\gamma$ -glutamyl cycle and the interaction of genotype in relation to these factors.

**Keywords:**  $\gamma$ -glutamyl cycle, Trans-sulphuration pathway, Metabolites, Genes, Supplementation, Autism spectrum disorders

## Background

Autism spectrum disorders are a heterogeneous group of neurodevelopmental conditions comprising autistic disorder which is characterised by impairments in reciprocal social interaction and communication and the presence of stereotyped behaviours, Asperger's Syndrome which is distinguished by no significant delay in early language acquisition or cognitive abilities, and

pervasive developmental disorder - not otherwise stated (PDD-NOS) in which individuals do not fully meet the criteria for autistic disorder or Asperger's syndrome. Over the last 30 years the number of diagnosed cases has increased from 0.4-0.5 to 4.0 per 1000 for autistic disorder and from 2 to 7.7-9.9 per 1000 for autism spectrum disorders [1-3] which is largely attributable to broadening diagnostic criteria, younger age at diagnosis and improved case ascertainment [4]. Autism spectrum disorders are increasingly being recognised as a major public health issue.

\* Correspondence: penelope.main@csiro.au

<sup>1</sup>Sansom Institute for Health Research, University of South Australia, City East Campus, Adelaide, SA 5000, Australia

Full list of author information is available at the end of the article

While the exact cause of autism is unknown, a strong genetic component has been identified as shown by family and twin studies which have found concordance rates of 82-92% in monozygotic twins compared with 1-10% in dizygotic twins, sibling recurrence risk at 6-8% and heritability estimates of > 90% [5,6]. Recent studies have shown that autistic disorder is likely to involve multiple genes [7-9] although a common genetic change is not seen in all cases suggesting that it is likely to be a cluster of conditions, each with its own individual and yet overlapping pathology. Environmental factors such as heavy metal toxicity [10-12], sub-clinical viral infections [13] and gastro-intestinal pathology [14,15], as well as endogenous toxins produced by metabolic processes [16], hormones (reviewed in [17]) and gastro-intestinal bacteria [18,19] have also been suggested as playing a role in the aetiology of the disorder, although none of these have been thoroughly investigated. Large, well designed studies, such as the Childhood Autism Risks from Genetics and Environment (CHARGE) [20], are currently underway to further elucidate the role of genes and environment.

Cellular detoxification systems are of critical importance in providing protection against the effects of endogenous and exogenous toxins. Glutathione redox and the glutathione-S-transferases reviewed below constitute one such system.

#### Glutathione redox and autism spectrum disorders

Glutathione (L- $\gamma$ -glutamyl-L-cysteinyl-glycine) is an intracellular peptide that has a wide range of functions including detoxification of xenobiotics and/or their metabolites [21,22], maintenance of the intracellular redox balance [23], and is the major endogenous antioxidant produced to combat free radical insults [24-26]. Other metabolic functions include cysteine storage [21], signal transduction [27] and apoptosis [28].

Within the cell, approximately 90% of glutathione is located in the cytosol, 10% in the mitochondria and a small percentage in the endoplasmic reticulum [29]. Approximately 85% of total cellular glutathione is free and unbound whilst the rest is bound to proteins [30]. Glutathione is synthesised in the cytosol in two steps (Figure 1).

The first step of glutathione synthesis involves the formation of glutamylcysteine from glutamate and cysteine in an ATP dependent reaction catalysed by glutamate-cysteine-ligase (GCL) which requires either Mg<sup>2+</sup> or Mn<sup>2+</sup> as a cofactor. This is considered to be the rate limiting step because it is dependent on the bioavailability of cysteine and the activity of GCL, the latter of which is modified by competitive inhibition by reduced glutathione (GSH) [31-34]. In the second step, glutathione

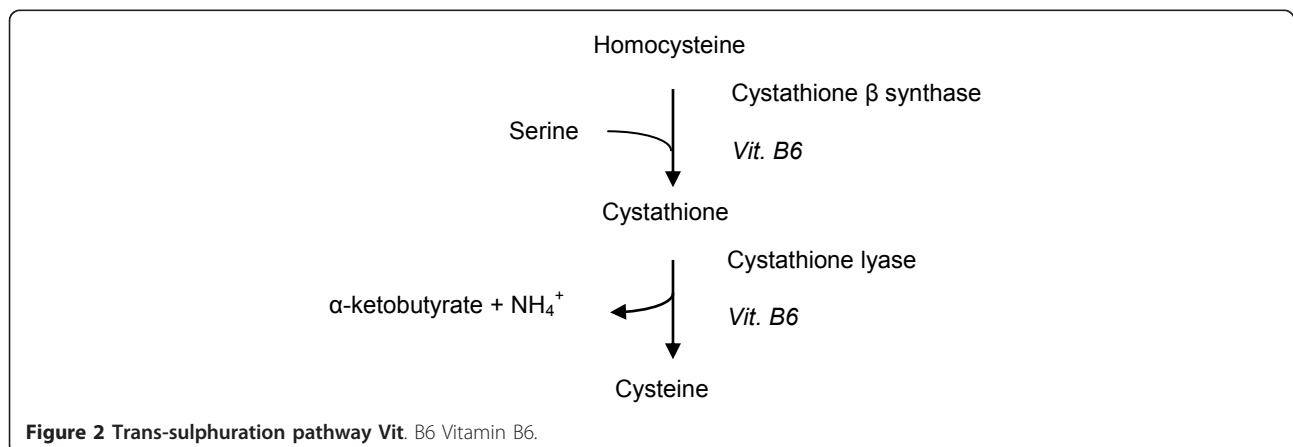
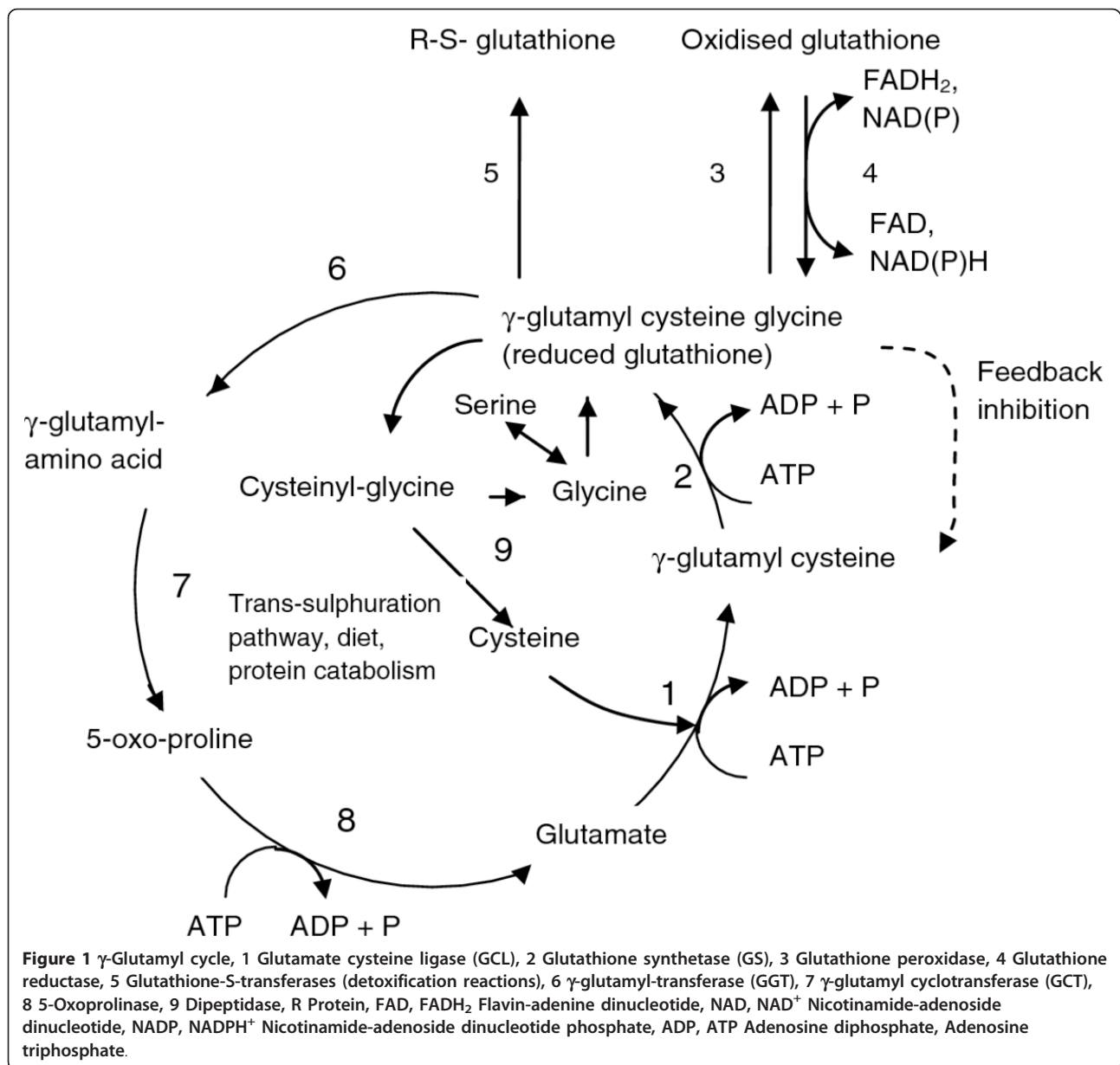
synthetase (GS) adds glycine to glutamyl-cysteine to form glutathione ( $\gamma$ -glutamyl-cysteinyl-glycine).

More than 98% of total glutathione is present as GSH and the rest is found as the oxidised form, glutathione disulfide (GSSG) or a range of glutathione-S-conjugates. GSH is readily converted to GSSG by the seleno-enzyme glutathione peroxidase (GPx) during periods of oxidative stress, and is reverted to the reduced form by glutathione reductase (GSH-R) [35]. GSH is also important in detoxification as it is used to conjugate a wide variety of exogenous compounds including carcinogens, toxins and drugs and endogenous electrophiles. The glutathione conjugate is subsequently secreted from the cell [36].

Glutathione degradation takes place in the extracellular space. Cysteine is released from extracellular glutathione by  $\gamma$ -glutamyl-transferase (GGT) located on the apical surface of the kidney, intestine and the epithelia of most transporting ducts, including the liver and bile ducts [37]. Expression of GGT is tissue and developmental stage specific and its activity may be induced by certain xenobiotics [37]. GGT hydrolyses the  $\gamma$ -glutamyl bond of glutathione or glutathione-S-conjugates and transfers the  $\gamma$ -glutamyl moiety to an acceptor molecule, often an amino acid [38]. If the substrate is glutathione, cysteinyl-glycine is released and subsequently cleaved into cysteine and glycine by cell surface dipeptidases. The  $\gamma$ -glutamyl amino acid can be transported back into the cell where  $\gamma$ -glutamyl cyclo-transferase (GCT) releases the acceptor amino acid to form 5-oxo-proline, the latter of which is converted back to glutamate by oxo-prolinase and used for GSH synthesis.

About half the cysteine used for glutathione synthesis is produced by the trans-sulphuration pathway [33]. The trans-sulphuration pathway involves conversion of homocysteine to cystathione and ultimately to cysteine in two vitamin B6 dependent reactions catalysed by cystathione- $\beta$ -synthase and cystathione lyase respectively (Figure 2). The remainder is obtained through the diet and protein catabolism. The trans-sulphuration pathway is closely linked to the folate-methionine cycle and is particularly active in the liver and absent or less active in other tissues, the foetus, neonates and in patients with homocysteinemia [39]. Neurons depend on glial cysteine for glutathione synthesis as they lack the trans-sulphuration pathway which in turn results in them being more susceptible to oxidative stress [40].

Glutathione status is an accurate indicator of cell functionality and viability [41-43]. The ratio of GSH:GSSG (glutathione redox ratio) is a sensitive index of oxidative stress, which can lead to a toxic imbalance between the production and removal of reactive oxygen species (ROS). A shift in the glutathione redox ratio towards the oxidised state may lead to decreased cell



proliferation, DNA damage [44] and increased apoptosis [45] that could potentially affect neurological development in the early stages of life. As a decreased glutathione redox ratio has also been reported in many studies of individuals with autistic disorder [46-50], it may be hypothesised that a shift in the glutathione redox ratio may play a role in the aetiology of autism. This article systematically reviews the evidence for a role of glutathione redox in the aetiology of autism spectrum disorders and considers the research questions:

1) Is there an association between metabolites/co-factors/genes/enzymes of the  $\gamma$ -glutamyl cycle or trans-sulphuration pathway and autism spectrum disorders?

2) If so, does normalisation of metabolite levels of the  $\gamma$ -glutamyl cycle or trans-sulphuration pathway lead to clinically significant improved outcomes for children with autism spectrum disorders?

## Methods

### Selection of studies for review

The inclusion criteria for studies were defined as:

(a) participants diagnosed with an autism spectrum disorder using standardised criteria such as the American Psychiatric Association's Diagnostic and Statistical Manual of Mental Disorders (DSM)-IV-R [51] or the Childhood Autism Rating Scale (CARS) scores [52]; and

(b) data for metabolites, co-factors, genes and/or enzymes associated with the  $\gamma$ -glutamyl cycle or the trans-sulphuration pathway, and/or

(c) interventions using metabolites or cofactors of the  $\gamma$ -glutamyl cycle or the trans-sulphuration pathway.

(d) full text English language articles published between 1970 and November 2011.

### Information retrieval

Information retrieval was performed using the following electronic databases: Embase, Medline, Cinahl, Scopus, Web of Science and International Pharmaceutical Abstracts (search terms in the Supplementary On-line Material). In addition, studies were identified from the reference lists of obtained published articles, editorials and known studies. Authors were contacted if not enough data was included in the original manuscript for analysis, for clarification of terms or to confirm whether the article contained data previously published by the same research group.

All potential studies identified were independently evaluated for inclusion by two primary reviewers. The primary reviewers were not blinded to the authors, institutions or source of publication at any time during the selection process. Disagreements about the inclusion/exclusion of studies were discussed and consensus achieved. Provision was made for a third reviewer if consensus was

unattainable but did not prove necessary. When multiple papers from a single study had been published, we used the latest publication and supplemented it with data from the earlier publication(s).

### Data extraction and methodological quality assessment

Data extraction for each included study was performed by PM and checked by two primary reviewers (MA, CO'D). Differences were resolved by consensus. The Newcastle Ottawa Scale [53] for case control studies was modified to assess the methodological quality of observational articles for the review (Table 1). The quality of each article was independently assessed by two primary reviewers (PM and COD) and assigned a score. Using a similar process, the risk of bias for intervention trials included in the review omitting the case report [54] was assessed using the criteria set out in the Cochrane Collaboration Handbook [55]. In addition, a level of evidence was assigned to each study using the Australian National Health and Medical Research Council criteria (Table 2) [56].

### Statistical analyses

The kappa coefficient was calculated to assess the level of agreement for the quality scores between the two coders [57]. Statistical heterogeneity was assessed for key metabolites of the  $\gamma$ -glutamyl cycle, trans-sulphuration pathway and GSH:GSSG using the Review Manager 5 (RevMan) statistical software [58]. Duplicated data presented in more than one publication by the same authors was not included in the statistical analysis. Meta-analysis was conducted using a random effects model where heterogeneity was low to moderate ( $I^2 = 0-60\%$ ). Where possible, the studies were stratified according to autism spectrum disorder. Standard deviation was calculated using StatSak statistical software prior to analysis using the RevMan program for studies that published the standard error of the mean rather than the standard deviation [59,60]. Studies are reported using the MOOSE (Meta-analyses of observational studies) Statement [61] and the STREGA (STrengthening the REeporting of Genetic Association studies) checklists [62].

## Results

Sixty six abstracts were identified via the electronic and hand search strategy. Of these, 24 were ineligible for inclusion. Reasons for exclusion were: 1) the paper did not contain any relevant data; 2) the data was already published in another article identified in the search; 3) data did not include the proband with an autism spectrum disorder; 4) the paper was a review article, conference abstract or comment on a previously published article; 5) the authors did not separate data for autism spectrum disorders from other psychological conditions; or 6) they were not English

**Table 1 Modified Newcastle Ottawa Scale**

| <b>1. Selection</b>  |  |   |
|--|--|---|
| Case definition  | Yes, with independent validation                   | 2 |
|  | Yes, record linkage/self report                    | 1 |
|  | No description                                     | 0 |
| Representativeness   | Consecutive cases                                  | 1 |
|  | Potential for selection bias/not stated            | 0 |
| Selection of controls  | Community  | 2 |
|  | Hospital/clinic/school                             | 1 |
|  | Potential for selection bias/not stated            | 0 |
| Definition of controls   | No family history of autism spectrum disorder      | 2 |
|  | Healthy/other psych/developmental/genetic disorder | 1 |
|  | disorder   | 0 |
|  | Poorly defined/not stated                          | 0 |
| <b>2. Comparability of cases and controls on the basis of the design</b> |  |   |
| Study controls for age   |  | 1 |
| Study controls for gender  |  | 1 |
| <b>3. Exposure</b>   |  |   |
| Ascertainment of exposure  | Laboratory blinded to case/control status          | 1 |
|  | Laboratory unblinded/not stated                    | 0 |
| Method of ascertainment same for cases and controls                      | Yes  | 1 |
|  | No   | 2 |
| <b>4. Additional criteria for genetic studies</b>                        |  |   |
| a. Consideration of Hardy Weinberg Equilibrium                           |  |   |
|  | Yes  | 1 |
|  | No   | 0 |
| b. Power calculations  |  |   |
|  | Yes  | 1 |
|  | No   | 0 |
| c. Correction for multiple comparisons                                   |  |   |
|  | Yes  | 1 |
|  | No   | 0 |
| d. Adjustment for population stratification                              |  |   |
|  | Yes  | 1 |
|  | No   | 0 |

language articles with the exception of a seminal French study widely referred to in English language papers [63] (Figure 3).

Forty two studies were included in the review (41 that met the inclusion criteria plus the French study). Of these, one provided data obtained from *in vitro* models of  $\gamma$ -glutamyl cycle metabolites, twenty nine provided data on metabolites and/or co-factors of the  $\gamma$ -glutamyl

cycle or trans-sulphuration pathway, six provided the results of intervention studies, six included genetic data and eight studies provided data on enzyme activity.

An overview of the studies included in this review is presented in Table 3. The level of evidence, study size and ascertainment of cases and controls are indicated along with a quality assessment score and/or assessment of risk of bias. Most studies were of the case control design, however, additionally there were two double blinded [64,65] and one open labelled randomised controlled trial [49], a case series [66] and a case report [54].

An assessment of study quality is presented in Tables 4, 5, 6 and 7. The case definition used to include participants in the studies varied over time. The case definition for autistic disorder was not standardised until 1980 when it was included in the DSM-III. Asperger's Syndrome and PDD-NOS were added to the DSM-IV in 1994 which broadened the definition to include many children who were previously undiagnosed. While early studies centred on cases obtained from institutionalised psychiatric settings [92,93,98], cases were later recruited through internal research registers [64], multiple centres [47,50,64,70,71,88,95,96] or community advertisements [75]. Although diagnosis was independently confirmed in several studies [59,60,69,70,72,75,83,85,91,92], most relied on medical records or parent reports. None of the studies had used a structured sampling frame for case ascertainment making them prone to selection bias. Information about case ascertainment was not provided for eight studies [48,49,54,59,74,78,81,84].

Ascertainment and definition of controls also varied widely. While two studies sourced their controls by community advertising [75,86], most were sourced from hospitals, clinics or schools [71,72,77,79,83,85,88,92,93] and fourteen studies did not provide information on the source of their controls [48,59,60,63,68-70,73,74,76,78,81,84]. With respect to definition of controls, most studies recruited healthy children with no information about family history of autism spectrum disorders, although, four studies did ensure that controls did not have either a family history or sibling with autism [70,75,77,87] and one screened for autism traits [59]. At the other end of the scale, controls for four studies were poorly defined potentially biasing the results [46,47,89,98]. Control values from one of these studies [47] were used for two later studies [49,50]. Additionally, three studies relied on laboratory reference ranges [65,92,93].

Gender is a potential confounder in studies of autistic disorder because the condition is four times more common in males than females [99]. Only five studies were gender matched [60,73,75,83,89], four did not provide the gender of cases or controls [50,59,71,89] and nine provided the gender of cases but not controls [46-48,50,70,73,79,83,91]. Age may also be a potential confounder as



**Table 2 Australian National Health and Medical Research Council Designated Levels of Evidence<sup>1</sup>**

| Level of evidence | Description   |
|-------------------|---|
| I                 | Evidence obtained from a systematic review of all relevant randomised controlled trials.  |
| II                | Evidence obtained from at least one properly designed randomised controlled trial.  |
| III - 1           | Evidence obtained from well designed pseudo-randomised controlled trials (alternate allocation or some other method).   |
| III - 2           | Evidence obtained from comparative studies with concurrent controls and allocation not randomised (cohort studies), case control studies or interrupted time series with control group. |
| III - 3           | Evidence obtained from comparative studies with historical control, two or more single arm studies, or interrupted time series without a parallel control group.                        |
| IV                | Evidence obtained from a case series, either post-test or pre-test and post-test.   |

<sup>1</sup>Data from reference [53]

serum glutamate was elevated in adults with autistic disorder compared to adult controls [75] but was not significantly different in children with autistic disorder compared to child controls [69,70]. In contrast, serum glycine and serine were not significantly different in either adults [75] or children [69,70] when levels in autistic disorder were compared to controls. One study included a range of participants from childhood to early adulthood, however, the findings were not stratified according to age [88].

All studies included in the review treated cases and controls equally. Laboratory blinding as to case and control status occurred for only one research group [65,76,87], although others were blinded to case status but not controls, for example, where the laboratory provided the control data [88,90,91] or reference ranges [65,67,92,93] or where another study was used for controls [49,50]. Most studies did not state whether the laboratory was blinded.

Genetic studies were assessed for quality using the Newcastle Ottawa Scale plus additional criteria that included consideration of Hardy Weinberg equilibrium, power of the study, population stratification and correction for multiple comparisons. All except one of the six genetic studies considered Hardy Weinberg equilibrium [47,50,94,96,97], two provided power calculations [96,97] and two adjusted for multiple comparisons [50,97] (although a footnote indicating that the associations were no longer statistically significant was not added in one case) [50]. While population stratification is not relevant for transmission linkage studies [94-97], neither of the remaining studies were adjusted for this [47,50].

Both of the double blinded randomised intervention trials provided information about concealment and the laboratory was blinded thereby reducing performance and detection bias [64,65]. Neither provided information about the randomisation process, complete outcome data and full reporting of results. While Bertoglio *et al.* 2010 state that 30 children completed the 12-week trial, closer inspection of the paper suggests that at least 32 children

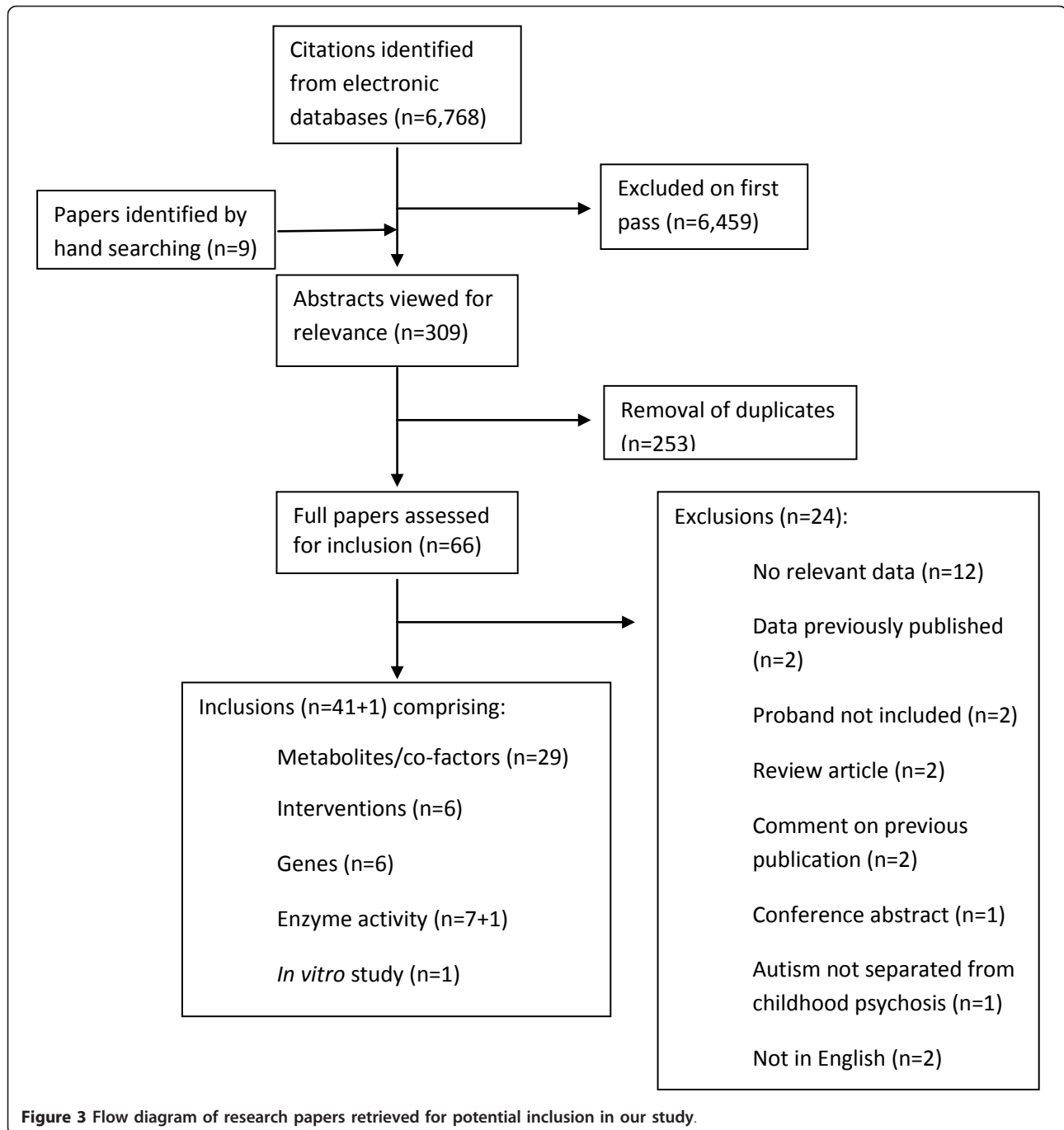
started the trial (see Table 1 in Bertoglio *et al.* 2010), however, no information on dropout or loss to follow-up was provided. Furthermore outcome data was only provided for the 'responder' sub-group in a form that was difficult to interpret. Adams *et al.* 2009 randomised children to receive either topical glutathione or a placebo before being given one round of a chelating agent with erythrocyte glutathione tested at baseline and 1-2 months following the intervention [65]. It is not clear whether it is a typographical error, however, Table 1 of the study states that 77 children participated in the first phase of the study, but baseline data for erythrocyte glutathione is only provided for 72 children. Although the paper states that 49 started the second phase of the study and therefore, according to the protocol, had a second glutathione measurement, pre- and post-intervention erythrocyte glutathione is only provided for 38 participants with no comparison between the two arms of the study with levels being compared to an adult reference range provided by the laboratory. The second phase of the study involved 'high excreters' of urinary metal ions being given a further 6 rounds of chelation if allocated to the topical glutathione arm or 6 rounds of placebo if previously allocated to the topical placebo arm of the study. Erythrocyte glutathione was not measured at the completion of the second phase of the study.

The open-label study design used in the remaining three intervention studies left them at high risk of selection, performance and detection bias [46,49,65], however, all studies provided complete outcome data and full reporting of results.

A kappa score of 0.87 was obtained which indicates a high level of agreement between raters for the assessment of quality of articles.

#### ***In vitro* studies of the $\gamma$ -glutamyl cycle**

Table 8 summarises the findings of an *in vitro* study of  $\gamma$ -glutamyl cycle metabolites [80]. Decreased free glutathione (fGSH) and increased GSSG were observed in both cytosol and mitochondrial extracts obtained from



lymphoblastoid cell lines derived from children with autistic disorder compared to unaffected controls resulting in a decreased GSH:GSSG. Exposure to physiological levels of nitrosative stress showed no difference in the magnitude of GSH:GSSG from cells derived from children with autistic disorder compared to healthy controls, however, the baseline GSH:GSSG was significantly lower (by 30%) in cells from children with autistic disorder.

#### **Metabolites and cofactors of the $\gamma$ -glutamyl cycle and trans-sulphuration pathway**

Data from key studies of metabolites of the  $\gamma$ -glutamyl cycle and trans-sulphuration pathway is shown in Figures 4, 5 and 6 and a summary of additional studies presented in Table 9.

The largest and most comprehensive study to date provided data for multiple metabolites of the  $\gamma$ -glutamyl cycle and trans-sulphuration pathway [47]. This study

**Table 3 Overview of studies included in the systematic review**

| Authors (country)  | Study size  | Participant characteristics <sup>1</sup>  | Ascertainment                                       |  | Case definition  | Outcome measures of interest   | Quality Score |
|--|---|---|---|--|--|--|---------------|
|  |   |   | Cases   | Controls   |  |  |               |
| <b>Level II (Double blinded randomised controlled trial)</b> |   |   |   |  |  |  |               |
| Bertoglio <i>et al.</i> 2010 [64] (USA)                      | 30 cases  | Cases 3-8 y, 93% M  | Clinical referrals and internal database.           | Cross-over study design.                                     | DSM-IV-TR and ADOS plus non-verbal IQ $\geq$ 49 measured by Wechsler Preschool and Primary Scale of Intelligence, Mullen Scales of Early Learning or Wechsler Intelligence Scale for Children. | Plasma GSH and GSH: GSSG linked to Global Clinical Impressions Score and other objective behavioural measures. | I5            |
| Adams <i>et al.</i> 2009 [65,67] (USA)                       | Baseline 77 cases RCT<br>41 cases (26 intervention, 15 placebo) | Baseline Cases 6.3 (3-8)y, 89.6% M<br>(95% autistic disorder, 3% PDD-NOS, 3% Asperger's Syndrome. RCT<br>Intervention 6.7 y, 92.3%M (96% autistic disorder, 4% Asperger's) Placebo 6.5 y, 93.3%M (100% autistic disorder) | Arizona residents.                                  | Immunosciences reference range for adults.                   | Previous diagnosis of ASD. No standardised definition.   | Erythrocyte glutathione. Behavioural measures.   | 3* I5         |
| <b>Open-labelled non-randomised control trial</b>            |   |   |   |  |  |  |               |
| Rossignol <i>et al.</i> 2007 [49] (USA)                      | 18 cases  | Cases 3-16 y, 78% M<br>No seizures. Many supplemented with folic acid and/or methylcobalamin.   | Not stated.   | Glutathione values from controls in James <i>et al.</i> 2006 | DSM-IV for autistic disorder, CARS   | Plasma GSH measured before and after 40 treatments with hyperbaric oxygen. Behavioural measures.               | 2* I5         |
| <b>Level III-2 (Casecontrol)</b>                             |   |   |   |  |  |  |               |
| Golse <i>et al.</i> 1978 [63] (France)                       | 36 cases, 21 controls   | Cases 4-19 y, 58% M<br>Controls 5-18 y, 43%M  | Referred from 4 clinics in France & 1 from Belgium. | Not stated.  | Social isolation, no language, stereotypical behaviour.  | Erythrocyte and platelet GPx activity.   | 2             |
| Rolf <i>et al.</i> 1993 [68] (Germany)                       | 18 cases, 14 controls   | Cases 9.9 $\pm$ 2.8 y (5-14 y) 89%M, medication free.<br>Controls 11.5 $\pm$ 2.0 y (8-14 y) 57%M.   | Not stated.   | Not stated.  | DSM-III for autistic disorder.   | Platelet glutamic acid.  | 4             |



**Table 3 Overview of studies included in the systematic review (Continued)**

|                                    |   |  |  |  |   |   |      |
|------------------------------------|---|--|--|--|---|---|------|
| Visconti et al. 1994 [69] (Italy)  | 37 cases (18 with EEG abnormalities), 19 controls   | Cases 7 y (3-12 y), 89%M<br>Controls 7 y (3-13 y), 68%M<br>1 case and 1 control on thioridazine. Fasted.   | Patients attending the Department of Child Neurology and Psychiatry, University of Bologna, Italy.                           | Not stated.  | DSM-III-R for autistic disorder.                        | Serum serine, glutamic acid, glycine and cysteine.  | 4    |
| D'Eufemia et al. 1995 [70] (Italy) | 40 cases, 46 controls   | Cases 12 y 4 mo (7-17 y), 68%M, 32 F<br>Controls 11 y, 2 mo (5-15 y). Medication free for previous month. Fasted.  | Referred by the Italian Association of Parents of Autistic Children.   | Not stated.  | DSM-III-R for autistic disorder.                        | Serum glutamic acid, glycine and cysteine.  | 5    |
| Yorbik et al. 2002 [71] (Turkey)   | 45 cases, 41 controls   | Cases 6.4 ± 2.2 y (4-12 y) 87%M<br>Controls 6.7 ± 2.5 y (4-12 y) 85%M<br>Medication free for previous month and fasted.  | Child and adolescent departments of 3 educational hospitals in Ankara.   | Children attending the Department of Pediatrics at Gulhane Military Medical School for routine vaccinations. | DSM-IV for autistic disorder.                           | Plasma and erythrocyte GPx activity.  | 4    |
| Söğüt et al. 2003 [72] (Turkey)    | 27 cases, 30 controls   | Cases 4.7 ± 2.7 y (2-12 y), 59%M<br>Controls 5.1 ± 2.9 y (2-13 y) 53%M<br>Medication free and fasted.  | Patients of the Child & Adolescent Psychiatry Dept at Gaziantep University Medical School.                                   | Students at a Gaziantep kindergarten & primary school.   | DSM-IV for autistic disorder and CARS > 30.             | Plasma GPx activity   | 5    |
| James et al. 2004 [46] (USA)       | 20 cases (19 regressive autism), 33 controls for the cross sectional study then 8 cases for the intervention. | Cases 6.4 ± 1.5 y, 70%M, 16 supplemented with 400 µg folic acid and 3 µg vitamin B12.<br>Controls 7.4 ± 1.3 y, gender not stated.<br>Supplemented with over the counter multivitamins. Both groups medication free and fasted. | Participants referred to the Arkansas Children's Hospital Research Institute and Dept of Pediatrics, University of Arkansas. | Siblings of children with Down syndrome.   | DSM-IV for autistic disorder plus diagnostic interview. | Plasma homocysteine, cystathionine, cysteine, tGSH & GSSG measured in all participants. The same parameters were measured before and after 3 mo. folic acid (800 µg) & betaine (1000 mg) and additional month on same regimen plus vitamin B <sub>12</sub> (75 µg/kg) for the intervention study. | 3 14 |

**Table 3 Overview of studies included in the systematic review (Continued)**

|   |                         |  |   |   |  |   |   |
|---|-------------------------|--|---|---|--|---|---|
| Adams <i>et al.</i> 2004 [73] (USA)     | 24 cases, 11 controls   | Cases 4.9 ± 1.4 y, 92%M<br>Controls 6-9 y  | Mail out to Greater Phoenix Chapter of the Autism Society of America and the Southwest Autism Research Centre.  | Not stated.<br>Appears to be from the same mail out.  | Diagnosis of an autism spectrum disorder by a psychiatrist or developmental paediatrician. | Plasma vitamin B <sub>6</sub> .   | 4 |
| James <i>et al.</i> 2006 [47] (USA)     | 80 cases<br>73 controls | Cases 7.3 ± 3.2 y (3-14 y), 89% M<br>Controls 10.8 ± 4.1 y, gender not stated. Medication and supplement free. Fasted. | Participants referred from autism clinics of participating physicians in New York and Florida.  | Participants of studies of children with Down syndrome or cystic fibrosis. These studies had 53 controls combined including 35 siblings of children with Down's syndrome. | DSM-IV, ADOS or CARS for autistic disorder.  | Plasma homocysteine, cystathionine, cysteine, cysteinylglycine, tGSH, fGSH, GSSG. | 2 |
| Rose <i>et al.</i> 2008 [50] (USA)      | 242 cases, 75 controls  | Cases aged 6.9 ± 2.9 y (3-14 y)<br>Controls aged 10.8 ± 4.1. Gender not stated. Fasted.                                | Participants referred by the Dennis Developmental Center at the University of Arkansas for Medical Sciences and from clinics of participating physicians in New York and Florida. | As for James 2006.  | DSM-IV and ADOS or CARS.   | tGSH, fGSH, GSSG. Cases stratified by ALAD polymorphism.                          | 2 |
| Pasca <i>et al.</i> 2006 [74] (Romania) | 12 cases, 9 controls    | Cases 8.3 ± 2.8 y, 75% M<br>Controls aged 8.3 ± 1.8 y 66% M<br>Medication and supplement free.                         | Not stated.   | Not stated.   | DSM-IV for autistic disorder.  | Plasma homocysteine and GPx activity.   | 3 |
| Shinohe <i>et al.</i> 2006 [75] (Japan) | 18 cases, 19 controls   | Cases 21.2 ± 2.1 y, (18-26 y)<br>100% M<br>Controls 22.2 ± 2.2 y, (18-26 y)<br>100%M<br>Medication free.               | Advocacy groups in Nagoya and Hamamatsu cities  | Recruited through advertisements in Hamamatsu city.   | DSM-IV, ADI-R for autistic disorder.   | Serum glutamate, glycine and serine.<br>Objective behavioural scores.             | 9 |

**Table 3 Overview of studies included in the systematic review (Continued)**

| Author(s) and Year                        | Study Design  | Participants   | Intervention  | Diagnosis   | Outcome  | Reference |
|---|---|--|---|---|--|-----------|
| Adams <i>et al.</i> 2006 [76] (USA)       | 11 cases, 11 controls   | Arizona residents  | Cases 7.2 ± 1.4 y, 73%M<br>Controls 7.8 ± 1.2 y, 91%M<br>Both groups were not supplemented with vitamin B <sub>6</sub> for the last two months. | Arizona residents. Diagnosis of an autism spectrum disorder by a psychiatrist or developmental paediatrician. | Plasma vitamin B <sub>6</sub> .  | 3         |
| Adams <i>et al.</i> 2007 [59] (Australia) | 17 cases, 16 controls   | Arizona residents  | Cases 2-16 years. Controls age not stated   | Not stated. DSM-IV for autistic disorder.   | Plasma homocysteine.   | 4         |
| Suh <i>et al.</i> 2008 [77] (USA)         | 31 cases, 11 controls   | Pfeiffer Clinic  | Cases 4.17 ± 1.3 y, 84%M<br>Controls 6.9 ± 1.6 y, 82%M<br>Medication and supplementation free. Not stated whether fasting.                      | Pfeiffer Clinic. DSM-IV, AD-R for autism spectrum disorders.  | Plasma homocysteine, cystathione, cysteine, tGSH, cysteinyl-glycine.   | 5         |
| Jory & McGinnis 2008 [78] (Canada)        | 20 cases, 15 controls   | Not stated. Parent assertion, hard copy confirmation not sought. | Cases 3.9 ± 1.7 y, 80% M<br>Controls 3.87 ± 1.1 y 40% M<br>Medication and supplement free. Fasted.  | Not stated. DSM-IV for autistic disorder.   | Erythrocyte selenium levels.   | 2         |
| Vojdani <i>et al.</i> 2008 [79] (USA)     | 1027 cases, 113 controls  | Participating clinicians from 10 clinics.                        | Cases 2-15 y, 75% M<br>Controls aged 5-15, gender not stated  | Children without autism attending the laboratory for allergy testing who obtained normal results.             | Correlation between glutathione and natural killer cell (NK) activity. NK activity and treatment with glutathione.   | 3         |
| James <i>et al.</i> 2009 [80] (USA)       | 10 case lymphoblastoid cell lines<br>10 control lymphoblastoid cell lines | AGRE   | Cases 7.8 ± 3.1 y 100%M<br>Controls 27.7 ± 9.1 y 100%M.   | Coriell Cell Repository. No documented behavioural or neurological disorders.                                 | Intracellular glutathione redox status, effect of thimerosal induced and nitrosative oxidative stress on GSH:GSSG.   | 5         |
| James <i>et al.</i> 2009 [48] (USA)       | 48 cases, 42 controls   | Not stated.  | Cases 4.8 ± 0.8 y, 82%M<br>Controls 4.5 ± 0.9 y, gender not stated. Supplement free and fasted.   | Not stated. No history of developmental delay or neurological symptoms.                                       | Plasma homocysteine, cysteine, cysteinylglycine, tGSH, fGSH, GSSG before and after 3 mo. intervention with folic acid (400 µg) and vitamin B <sub>12</sub> (75 µg/kg). | 4 14      |

**Table 3 Overview of studies included in the systematic review (Continued)**

|   |                         |   |  |  |  |   |   |
|---|-------------------------|---|--|--|--|---|---|
| Al-Gadani et al. 2009 [81] (Saudi Arabia) | 30 cases, 30 controls   | Cases 3-15 y, 73% M<br>Controls 3-15 y, 67%M Medication and supplementation free. Fasted. | Not stated.  | Not stated.  | DSM-IV for autistic disorder.  | Plasma GSH and GSH-Px activity.   | 4 |
| Pasca et al. 2009 [60] (Romania)          | 15 cases, 13 controls.  | Cases 5.1 ± 0.45 y, 87%M<br>Age and gender matched.<br>Supplement free. Fasted.           | Not stated.  | Not stated.  | DSM-IV-R for autistic disorder, PDD-NOS or Asperger's Syndrome.                                  | Plasma homocysteine, cysteine, cystathionine, serine, glycine. Whole blood tGSH.                                  | 6 |
| Pastural et al. 2009 [82] (Canada)        | 15 cases, 12 controls   | Cases 7.9 y (2-13 y) 100%M<br>Controls 8.7 y (4-17 y) 75%M                                | Enrolled by Jonty Foundation   | 9/12 siblings controls with no family history of autism, age not gender matched.   | DSM-IV for autistic disorder.  | Plasma homocysteine, cysteine and tGSH. Glutamate toxicity in neuronal, astrocyte and hepatocyte cell cultures.   | 2 |
| Mostafa et al. 2010 [83] (Egypt)          | 44 cases, 44 controls   | Cases median 8 y (3.5-12 y), 68%M<br>Controls median 8 y (4-12 y),                        | Patients attending the Pediatric Neuro-Psychiatric Clinic, Children's Hospital, Ain Shams University | Siblings of children with minor illnesses attending the Out-patients' Clinic, Children's Hospital, Ain Shams University. | DSM-IV for autistic disorder.  | Plasma GPx activity   | 7 |
| Vergani et al. 2011 [84] (Italy)          | 28 cases, 32 controls   | Cases 2-6 y, 75% M<br>Controls 62.5%M   | Not stated.  | Not stated.  | DSM-IV for autistic disorder.  | Erythrocyte GPx activity.   | 3 |
| Al-Yafee et al. 2011 [85] (Saudi Arabia)  | 20 cases<br>20 controls | Cases (3-16 y), 100%M, 100% IQ<br>< 80. Controls 3-16 y, 100% M.                          | Autism Research and Treatment Centre clinic.   | Well Baby Clinic, King Khaled University Hospital.   | ADIR and ADOS and Developmental, dimensional diagnostic interview.                               | Total glutathione, oxidised glutathione, tGSH-GSSG, glutathione reductase and glutathione-S-transferase activity. | 5 |
| Tirouvanziam et al. 2011 [86] (USA)       | 27 cases<br>20 controls | Cases 7.0 ± 2.3 y, 77.8%M<br>Controls 7.3 ± 2.5 y, 45%M                                   | Community referrals.   | Community advertisements.  | ADIR and ADOS for autistic disorder. ADI-R score 7-10 plus ADOS criteria for autism for PDD-NOS. | Platelet poor plasma glutamine, serine and glycine.   | 5 |
| Adams et al. 2011 [87] (USA)              | 55 cases<br>44 controls | Cases 10.0 ± 3.1 y, 89%M<br>Controls 11.0 ± 3.1 y, 89%M                                   | Autism Society of Greater Phoenix and Arizona Division of Developmental Disorders.                   | Autism Society of Greater Phoenix and Arizona Division of Developmental Disorders.                                       | Prior diagnosis by a child psychiatrist or developmental paediatrician.                          | Plasma glutamate, serine, GSH and GSSG. Selenium (whole blood and erythrocyte).                                   | 6 |

**Case Control Level III-3**

**Table 3 Overview of studies included in the systematic review (Continued)**

|  |  |  |   |   |   |   |   |
|--|--|--|---|---|---|---|---|
| Aldred et al. 2003 [88] (UK)           | 23 cases (12 autistic disorder, 11 Asperger's syndrome), 32 parents, 23 siblings.                                    | Cases Autism 16.4 ± 9.04 y, 92%M<br>Aspergers 15.7 ± 8.63 y, 91%M<br>Parents 44.1 ± 69 y, 44%M<br>Siblings 16.5 ± 64 y, 39%M | Child psychiatric out-patient clinics in Dublin and Tipperary.  | Children admitted to Birmingham Children's Hospital for trauma or minor elective surgery.             | DSM-IV for autistic disorder or Asperger's Syndrome.  | Plasma serine and glycine.  | 5 |
| Arnold et al. 2003 [89]                | 36 cases (mixed autistic disorder and PDD-NOS) (10 gluten/free diet), 24 controls.                                   | Cases Aged < 5 years, gender unknown. Controls Age and gender matched with cases on a regular diet.                          | Retrospective medical records from Kirsch Developmental Services Center or the Genetic Consultation Clinic at the University of Rochester School of Medicine & Dentistry 1996-1998. | Children with developmental delay not autistic. Source not stated.                                    | DSM-IV supported by CARS or the pervasive Developmental Disorders Screening Test.   | Plasma glutamine.   | 5 |
| Geier & Geier 2009 [90] (USA)          | 28 cases (20 autistic disorder, 8 other ASD) 64 controls for cysteine and 120 controls for glutathione measurements. | Cases 5.8 ± 2.7 y, 82% M<br>50% mild, 50% severe autism.<br>Controls 2-16 y. Gender unknown.                                 | Dallas/Fort Worth, Texas area.  | Prospective samples from non-autistic children aged 2-16 y collected by the participating laboratory. | CARS > 30. Mild autism CARS 30-38.5 Severe autism CARS > 38.5   | Cysteine, reduced and oxidised glutathione.                             | 3 |
| Geier & Geier 2009 [91] (USA)          | 38 cases (28 10 other ASD) Controls as above.  | Cases 6.0 ± 2.6 y, 89.5% M<br>Controls as above.   | As above.   | As above  | CARS > 30   | As above.   | 3 |
| Sankar 1979 [92] (USA)                 | 19 cases   | Age within the range 5-16 y, 100%M<br>Medication and supplement free for 3 weeks prior to fasted blood draw.                 | Children admitted to Creedmoor State Hospital   | Used reference ranges from literature.  | Onset from infancy with severe emotion-al isolation; failure to relate to objects & persons; failure to develop speech & communication. If speech present, it is a non-communicative type. Stereotypy of motor behaviour. | Serum vitamin B <sub>6</sub> .  | 4 |
| Khaludeenin & Philpott 1980 [93] (USA) | 9 cases  | Cases mean 9 y, 78%M   | Consecutive cases at Philpott clinic  | Used reference range from literature.   | Not provided  | Plasma cystine, cystathione, glutamic acid and vitamin B <sub>6</sub> . |   |

**Level IV (Case series)**

**Table 3 Overview of studies included in the systematic review (Continued)**

|                                |   |  |   |  |   |  |   |
|--------------------------------|---|--|---|--|---|--|---|
| Geier & Geier 2006 [66] (USA)  | 16 cases  | Cases 5.9 ± 2.1 y  | Consecutive pre-pubertal age children (≤ 11 y) with a previous diagnosis of regressive autism or PDD-NOS presenting as an outpatient at the Genetic Centres of America between Nov. 2004 and Nov. 2005. | Reference range provided by participating laboratories.            | Not provided, relied on previous diagnosis.   | Plasma cysteine and reduced glutathione, serum cystathionine and cysteine. |   |
| <b>Level IV (Case report)</b>  |   |  |   |  |   |  |   |
| Moretti et al. 2005 [54] (USA) | 1 case  | Case aged 6 y, F   | Not stated.   | n/a  | ADOS, ADI-R for autistic disorder.            | Cerebral spinal fluid homocysteine.  |   |
| <b>Genetic studies</b>         |   |  |   |  |   |  |   |
| Bowers et al. 2011 [94] (USA)  | 318 families (1,149 individuals including 457 children) plus 3,327 participants from independent AGRE families for replication. | Cases 77.6% M, 321 sibships, Caucasian 91.68%, American black 0.22%, unknown 8.1%. | Autism Genetic Resource Exchange.   | Family members of cases from the Autism Genetic Resource Exchange. | ADI-R and ADOS for autism spectrum disorders. | 308 SNPs of 42 candidate genes related to glutathione.                     | 4 |
| Ming et al. 2010 [95] (USA)    | 103 cases, (101 autistic disorder, 2 PDD-NOS) including 68 case trios.  | Cases 86%M   | New Jersey Center for Outreach & Services for the Autism Community and Department of Pediatrics UMDNJ.  | Not relevant.  | ADI-R and ADOS-G for autistic disorder.       | GPx-1 polymorphisms.   | 3 |
| Rose et al. 2008 [50] (USA)    | 451 cases, 251 controls   | Cases aged 6.9 ± 2.9 y (3-14 y) Controls aged 10.8 ± 4.1. Gender not stated.       | Participants referred by the Dennis Developmental Center at the University of Arkansas for Medical Sciences and from clinics of participating physicians in New York and Florida.                       | Glutathione values from controls in James 2006.                    | DSM-IV and ADOS or CARS.                      | tGSH, fGSH, GSSG stratified by ALAD polymorphism.                          | 4 |



**Table 3 Overview of studies included in the systematic review (Continued)**

|                                       |   |  |   |   |   |                              |   |
|---------------------------------------|---|--|---|---|---|------------------------------|---|
| Buyśke <i>et al.</i> 2006 [96] (USA)  | 54 case parent trios<br>172 controls                                      | 45 cases diagnosed as autistic disorder using both instruments, 9 diagnosed as autistic disorder using one instrument and PDD-NOS using the other. | New Jersey Center for Outreach Services for the Autism Community and the Dept of Pediatrics, UMDNJ -Robert Wood Johnson Medical School. | UMDNJ clinics and individuals married into dominant pedigrees of other disorders.         | ADIR and ADOS-G for autistic disorder.      | GST-M1 polymorphisms         | 4 |
| James <i>et al.</i> 2006 [47] (USA)   | 360 cases<br>205 controls (comprising 73 children and 132 adult females). | Cases 7.3 ± 3.2 y (3-14 y), 89% M<br>Controls 10.8 ± 4.1 y, gender not stated (n = 73)<br>plus adult females of child bearing age (n = 132).       | Participants referred from autism clinics of participating physicians in New York and Florida.  | Participants of Down syndrome, cystic fibrosis and a congenital heart failure risk study. | DSM-IV, ADOS or CARS for autistic disorder. | GST-M1 and T1 polymorphisms. | 3 |
| Serajee <i>et al.</i> 2004 [97] (USA) | 196 case parent trios (581 individuals).                                  | Not stated.  | Autism Genetic Resource Exchange. Random selection of one affected sibling from each multiplex family.                                  | Not relevant.   | DSM-IV for autism spectrum disorder.        | GST-P1 polymorphisms.        | 6 |

<sup>1</sup>Unless otherwise stated, children with epilepsy, genetic, mental health or metabolic conditions were excluded.

DSM Diagnostic and Statistical Manual of Mental Disorders CARS Childhood Autism Rating Scale

ADI-R Autism Diagnostic Interview (Revised) ADOS Autism Diagnostic Observation Schedule

ASD Autism Spectrum Disorder PDD-NOS Pervasive developmental disorder -not otherwise specified

AGRE Autism Genetic Resource Exchange UMDNJ University of Medicine and Dentistry of New Jersey

ALAD delta-amino levulinic acid dehydratase GPx-1 Glutathione peroxidase

SHMT1 Serine hydroxyl methyl transferase GST-P1 Glutathione S-transferase P1

tGSH Total glutathione GSSG Oxidised glutathione

GST Glutathione-S-transferase HBOT Hyperbaric oxygen therapy

\* Based on baseline data for cases and controls

**Table 4 Scores for assessment of quality for case control studies using the Newcastle Ottawa Scale**

|                                | Golse et al. 1978 | Sankar et al. 1979 | Khaleel & Philpot 1980 | Rolf et al. 1993 | Visconti et al. 1994 | D'Euflamia et al. 1995 | Yorbik et al. 2002 | Sogut et al. 2003 | Aldred et al. 2003 | James et al. 2004 | Adams et al. 2004 | James et al. 2006 | Pasca et al. 2006 | Shinohe et al. 2006 | Adams et al. 2006 | Adams et al. 2007 | Rossignol et al. 2007 | Suh et al. 2008 |          |
|--------------------------------|-------------------|--------------------|------------------------|------------------|----------------------|------------------------|--------------------|-------------------|--------------------|-------------------|-------------------|-------------------|-------------------|---------------------|-------------------|-------------------|-----------------------|-----------------|----------|
| <b>1. Selection</b>            |                   |                    |                        |                  |                      |                        |                    |                   |                    |                   |                   |                   |                   |                     |                   |                   |                       |                 |          |
| Case definition                | 0                 | 2                  | 0                      | 1                | 2                    | 2                      | 1                  | 2                 | 1                  | 1                 | 1                 | 1                 | 1                 | 2                   | 1                 | 2                 | 1                     | 1               | 1        |
| Representativeness             | 0                 | 0                  | 0                      | 0                | 0                    | 0                      | 0                  | 0                 | 0                  | 0                 | 0                 | 0                 | 0                 | 0                   | 0                 | 0                 | 0                     | 0               | 0        |
| Selection of controls          | 0                 | 0                  | 1                      | 0                | 0                    | 0                      | 1                  | 1                 | 1                  | 0                 | 0                 | 0                 | 0                 | 2                   | 0                 | 0                 | 0                     | 0               | 1        |
| Definition of controls         | 0                 | 0                  | 1                      | 1                | 1                    | 2                      | 1                  | 1                 | 1                  | 1                 | 0                 | 0                 | 1                 | 2                   | 0                 | 1                 | 0                     | 0               | 2        |
| <b>2. Comparability</b>        |                   |                    |                        |                  |                      |                        |                    |                   |                    |                   |                   |                   |                   |                     |                   |                   |                       |                 |          |
| Control for confounding        | 0                 | 0                  | 0                      | 1                | 0                    | 0                      | 0                  | 0                 | 1                  | 0                 | 2                 | 0                 | 0                 | 2                   | 0                 | 0                 | 0                     | 0               | 0        |
| <b>3. Exposure</b>             |                   |                    |                        |                  |                      |                        |                    |                   |                    |                   |                   |                   |                   |                     |                   |                   |                       |                 |          |
| Ascertainment                  | 0                 | 1                  | 0                      | 0                | 0                    | 0                      | 0                  | 0                 | 0                  | 0                 | 0                 | 0                 | 0                 | 0                   | 1                 | 0                 | 0                     | 0               | 0        |
| Method same for cases/controls | 1                 | 1                  | 1                      | 1                | 1                    | 1                      | 1                  | 1                 | 1                  | 1                 | 1                 | 1                 | 1                 | 1                   | 1                 | 1                 | 1                     | 1               | 1        |
| <b>Overall score</b>           | <b>1</b>          | <b>4</b>           | <b>3</b>               | <b>4</b>         | <b>4</b>             | <b>5</b>               | <b>4</b>           | <b>5</b>          | <b>5</b>           | <b>3</b>          | <b>4</b>          | <b>2</b>          | <b>2</b>          | <b>9</b>            | <b>3</b>          | <b>4</b>          | <b>2</b>              | <b>5</b>        | <b>5</b> |

**Table 5 Scores for assessment of quality for case control studies using the Newcastle Ottawa Scale**

|                                | Jory & McGinnis 2008 | Rose et al. 2008 | Vojdani et al. 2008 | James et al. 2009 | James et al. (in vitro) 2009 | Al-Gadani et al. 2009 | Pasca et al. 2009 | Pastural et al. 2009 | Geier & Geier 2009 | Adams et al. 2009 | Mostafa et al. 2010 | Vergani et al. 2011 | Al-Yafee et al. 2011 | Adams et al. 2011 | Tirouvanzium et al. 2011 | Max score |
|--------------------------------|----------------------|------------------|---------------------|-------------------|------------------------------|-----------------------|-------------------|----------------------|--------------------|-------------------|---------------------|---------------------|----------------------|-------------------|--------------------------|-----------|
| 1 Selection                    |                      |                  |                     |                   |                              |                       |                   |                      |                    |                   |                     |                     |                      |                   |                          |           |
| Case definition                | 1                    | 1                | 1                   | 2                 | 2                            | 2                     | 1                 | 1                    | 2                  | 1                 | 2                   | 1                   | 2                    | 1                 | 1                        | 2         |
| Representativeness             | 0                    | 0                | 0                   | 0                 | 0                            | 0                     | 0                 | 0                    | 0                  | 0                 | 0                   | 0                   | 0                    | 0                 | 0                        | 1         |
| Selection of controls          | 0                    | 0                | 1                   | 0                 | 0                            | 0                     | 0                 | 0                    | 0                  | 0                 | 1                   | 0                   | 1                    | 0                 | 0                        | 2         |
| Definition of controls         | 0                    | 0                | 0                   | 1                 | 0                            | 1                     | 0                 | 0                    | 0                  | 0                 | 1                   | 1                   | 1                    | 2                 | 1                        | 2         |
| 2 Comparability                |                      |                  |                     |                   |                              |                       |                   |                      |                    |                   |                     |                     |                      |                   |                          |           |
| Control for confounding        | 0                    | 0                | 0                   | 1                 | 1                            | 1                     | 2                 | 0                    | 0                  | 0                 | 2                   | 0                   | 0                    | 0                 | 2                        | 2         |
| 3 Exposure                     |                      |                  |                     |                   |                              |                       |                   |                      |                    |                   |                     |                     |                      |                   |                          |           |
| Ascertainment                  | 0                    | 0                | 0                   | 0                 | 0                            | 0                     | 0                 | 0                    | 0                  | 1                 | 0                   | 0                   | 0                    | 1                 | 0                        | 1         |
| Method same for cases/controls | 1                    | 1                | 1                   | 1                 | 1                            | 1                     | 1                 | 1                    | 1                  | 1                 | 1                   | 1                   | 1                    | 1                 | 1                        | 1         |
| <b>Overall score</b>           | <b>2</b>             | <b>2</b>         | <b>3</b>            | <b>4</b>          | <b>5</b>                     | <b>4</b>              | <b>6</b>          | <b>2</b>             | <b>3</b>           | <b>3</b>          | <b>7</b>            | <b>3</b>            | <b>5</b>             | <b>5</b>          | <b>5</b>                 | <b>9</b>  |

**Table 6 Scores for assessment of quality for genetic studies the Newcastle Ottawa Scale**

|                              | Bowers <i>et al.</i> 2011 | Ming <i>et al.</i> 2010 | Buyske <i>et al.</i> 2006 | James <i>et al.</i> 2006 | Rose <i>et al.</i> 2006 | Serajee 2004 | Max Score |
|------------------------------|---------------------------|-------------------------|---------------------------|--------------------------|-------------------------|--------------|-----------|
| 1 Selection                  |                           |                         |                           |                          |                         |              |           |
| Case definition              | 2                         | 2                       | 1                         | 1                        | 1                       | 2            | 2         |
| Representativeness           | 0                         | 0                       | 0                         | 0                        | 0                       | 0            | 1         |
| Selection of controls        | trios                     | trios                   | trios                     | 0                        | 0                       | trios        | 2         |
| Definition of controls       | n/a                       | n/a                     | n/a                       | 0                        | 0                       | n/a          | 2         |
| 2 Comparability              |                           |                         |                           |                          |                         |              |           |
| Control for confounding      | n/a                       | n/a                     | n/a                       | 0                        | 0                       | n/a          | n/a       |
| 3 Exposure                   |                           |                         |                           |                          |                         |              |           |
| Ascertainment                | 0                         | 0                       | 0                         | 0                        | 0                       | 0            | 1         |
| Method same cases/controls   | 1                         | 1                       | 1                         | 1                        | 1                       | 1            | 1         |
| 4 Genetics                   |                           |                         |                           |                          |                         |              |           |
| HW equilibrium               | 1                         | 0                       | 1                         | 1                        | 1                       | 1            | 1         |
| Power calculations           | n/a                       | 0                       | 1                         | 0                        | 0                       | 1            | 1         |
| Control multiple comparisons | 0                         | 0                       | 0                         | 0                        | 1                       | 1            | 1         |
| Population stratification    | n/a                       | n/a                     | 0                         | 0                        | 0                       | n/a          | 1         |
| <b>Overall score</b>         | <b>4</b>                  | <b>3</b>                | <b>4</b>                  | <b>3</b>                 | <b>4</b>                | <b>6</b>     | <b>13</b> |

reported significantly lower levels of GSH (by 32%) and higher levels of GSSG (by 66%) in plasma of children with autistic disorder compared to controls, together with significantly lower homocysteine and cysteine levels, while cystathione levels were significantly higher and cysteinyl-glycine levels were not significantly different [47]. These findings confirm those of an earlier pilot study by the same researchers with the exception that cystathione was found to be lower in children with autistic disorder in the pilot study [46], as well as a later study by the same research group which focussed on a subgroup of children with autistic disorder who had abnormal methylation and/or GSH:GSSG [48].

Plasma homocysteine levels for the above studies [46-48] showed that there was no statistically significant difference between children with autistic disorder and controls which has been replicated by a number of other research groups for children with autistic disorder [59,60,82], PDD-

NOS and Asperger's syndrome [60] as well as a mixed sample of children with autism spectrum disorders [77]. The only study to report a significant increase in plasma homocysteine in children with autistic disorder [74] was not replicated by the same research group using a fasted sample [60]. Examination of statistical heterogeneity showed low heterogeneity overall ( $I^2 = 34\%$ ) and no heterogeneity between diagnostic subgroups ( $I^2 = 0\%$ ) (Figure 4). Meta-analysis resulted in a standardised mean difference (SMD) of -0.18 (95%CI -0.46-0.10) across 199 cases and 185 controls using a random effects model. Data from James *et al.* 2009 was not included in the analysis because the cases were selected for low methylation ratio or GSH:GSSG, however, the data is presented in Figure 4.

Similarly, no significant difference was observed in plasma cystathione from children with autistic disorder, PDD-NOS, Asperger's Syndrome or mixed autism spectrum disorders [46,60,77], although another study report

**Table 7 Scores for assessment of risk of bias for intervention studies**

| Risk of bias              | Bertoglio <i>et al.</i> 2011 | James <i>et al.</i> 2009 | Adams <i>et al.</i> 2009 | Rossignol <i>et al.</i> 2007 | James <i>et al.</i> 2004 |
|---------------------------|------------------------------|--------------------------|--------------------------|------------------------------|--------------------------|
| Randomisation             | Uncertain                    | Open label               | Uncertain                | Open label                   | Open label               |
| Concealment of allocation | Low risk                     | Open label               | Low risk                 | Open label                   | Open label               |
| Blinding                  | Low risk                     | Open label               | Low risk                 | Open label                   | Open label               |
| Incomplete outcome data   | High risk                    | Low risk                 | High risk                | Low risk                     | Low risk                 |
| Selective reporting       | High risk                    | Low risk                 | High risk                | Low risk                     | Low risk                 |
| <b>Overall score</b>      | <b>5</b>                     | <b>4</b>                 | <b>5</b>                 | <b>4</b>                     | <b>4</b>                 |

**Scoring**

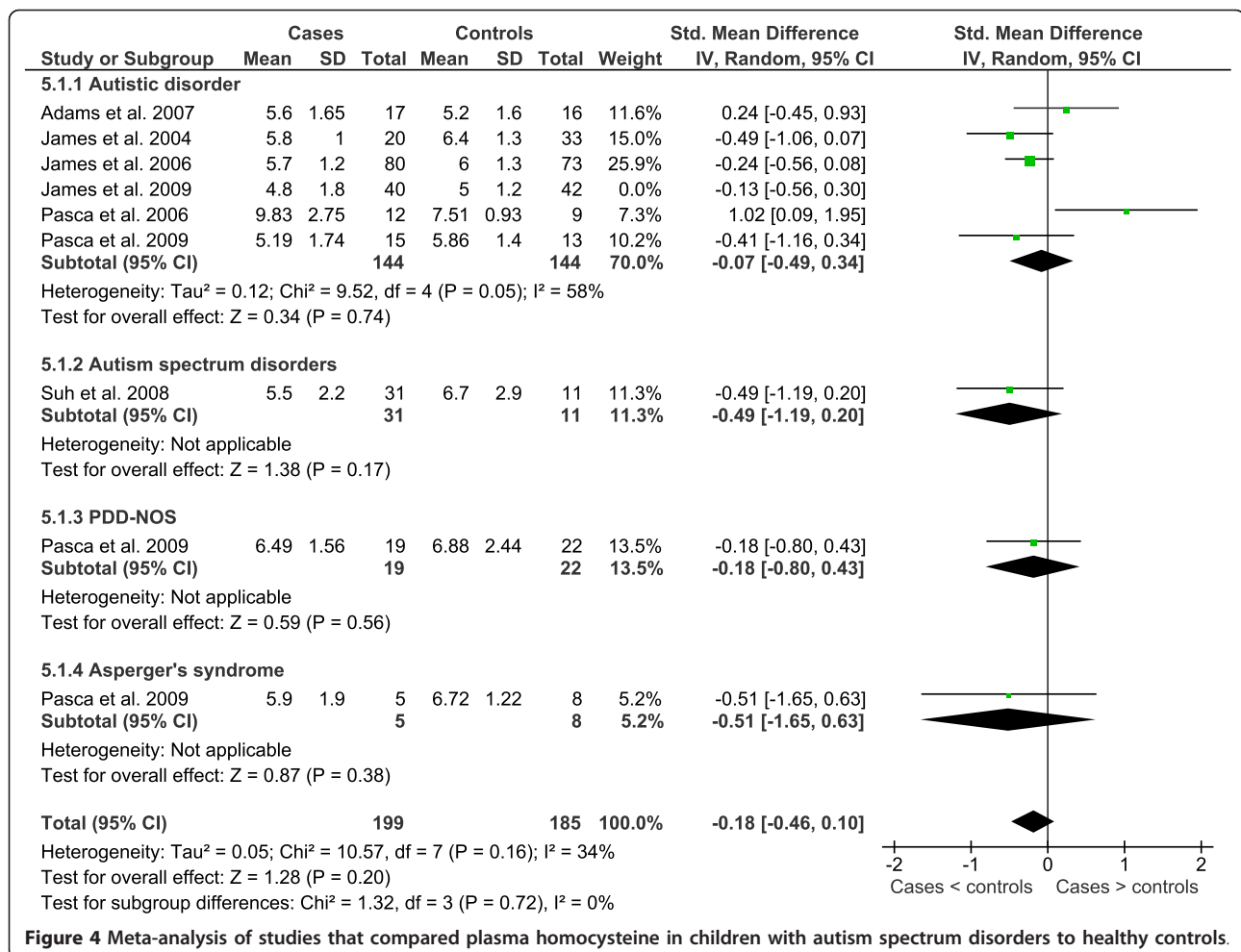
Low risk = 2; Uncertain = 1; High risk/open label = 0

**Table 8 In vitro studies of  $\gamma$ -glutamyl cycle metabolites**

| Model                     | Metabolite                 | Study                  | Cases <sup>1</sup> | Controls <sup>1</sup> | P values | Overall finding <sup>2</sup> | Comments  |
|---------------------------|----------------------------|------------------------|--------------------|-----------------------|----------|------------------------------|---|
| Lymphoblastoid cell lines | Free glutathione           | James et al. 2009 [80] | 21.72 ± 4.3        | 26.48 ± 3.5           | 0.021    | lower                        | Whole cell extract - intracellular glutathione  |
|                           |                            |                        | 1.75 ± 0.3         | 2.64 ± 0.7            | 0.001    | lower                        | Mitochondria - intracellular glutathione        |
|                           |                            |                        | 19.8 ± 4.1         | 23.5 ± 4.5            | < 0.04   | lower                        | Whole cell extract - without nitrosative stress |
|                           |                            |                        | 17.4 ± 3.9         | 18.3 ± 4.1            |          |                              | Whole cell extract - with nitrosative stress    |
|                           | Oxidised glutathione       | James et al. 2009 [80] | 0.36 ± 0.06        | 0.29 ± 0.07           | < 0.001  | higher                       | Whole cell extract - intracellular glutathione  |
|                           |                            |                        | 0.37 ± 0.11        | 0.26 ± 0.12           | 0.059    | higher                       | Mitochondria - intracellular glutathione        |
|                           |                            |                        | 0.26 ± 0.08        | 0.19 ± 0.04           | < 0.04   | higher                       | Whole cell extract - without nitrosative stress |
|                           |                            |                        | 0.51 ± 0.35        | 0.48 ± 0.30           |          |                              | Whole cell extract - with nitrosative stress    |
|                           | Free: oxidised glutathione | James et al. 2009 [80] | 61.81 ± 10.6       | 99.14 ± 33.5          | < 0.001  | lower                        | Whole cell extract - intracellular glutathione  |
|                           |                            |                        | 5.06 ± 1.3         | 11.63 ± 3.9           | < 0.001  | lower                        | Mitochondria - intracellular glutathione        |
|                           |                            |                        | 19.8 ± 4.1         | 23.5 ± 4.5            | < 0.04   | lower                        | Whole cell extract - without nitrosative stress |
|                           |                            |                        | 17.4 ± 3.9         | 18.3 ± 4.1            |          |                              | Whole cell extract - with nitrosative stress    |

<sup>1</sup> mean ± standard deviation, nmol/mg protein

<sup>2</sup> cases relative to controls



**Figure 4** Meta-analysis of studies that compared plasma homocysteine in children with autism spectrum disorders to healthy controls.

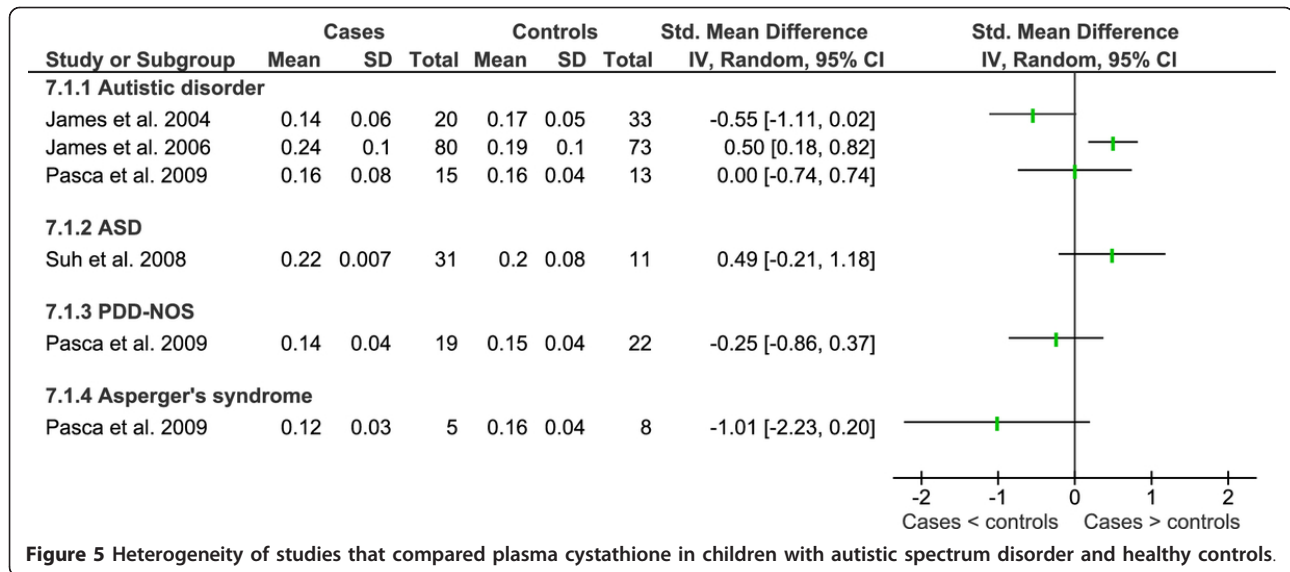
it to be significantly higher [47] in children with autistic disorder than controls (Figure 5). Examination of statistical heterogeneity showed that there was substantial overall heterogeneity ( $I^2 = 70\%$ ) with moderate heterogeneity between diagnostic subgroups ( $I^2 = 41.4\%$ ). It is hard to explain the heterogeneity given that two of the larger studies were conducted by the same research group using the same methodology [46,47].

Serine is required for synthesis of cystathione from homocysteine. Four studies found no significant difference in serum or plasma serine levels between children and adults with or without autistic disorder, PDD-NOS, Asperger's Syndrome or autism spectrum disorders (mixed sample) [60,69,70,75], one study showed a trend towards a decrease in children with autistic disorder [60] and another reported significantly increased plasma serine in children with autism spectrum disorders [87] and significantly lower levels of serine were reported for platelet poor plasma in autism spectrum disorders [86]. Factors that may have contributed to the heterogeneity between studies include fasting

status, differing laboratory methods and varied selection of controls as well as correction for multiple comparisons.

Studies showing that plasma cysteine is significantly lower in children with autistic disorder are dominated by one research group that published three studies (one in children with abnormal methylation or GSH:GSSG) [46-48] and their findings have been replicated by another research group [60]. The same study found no significant difference in plasma cysteine levels for children with PDD-NOS or Asperger's Syndrome, as did a study comparing autism spectrum disorders (sample composition unknown) compared to controls [77]. Plasma cysteine was significantly lower in a study comprising 28 children with autistic disorder and 10 children with PDD-NOS [91]. Serum cysteine levels of children with autistic disorder compared to controls were not significantly different from controls [69]. Overall statistical heterogeneity for plasma cysteine was considerable ( $I^2 = 92\%$ ) and low to moderate between diagnostic subgroups ( $I^2 = 39.8\%$ ). Again, factors that may have led to the high level of heterogeneity



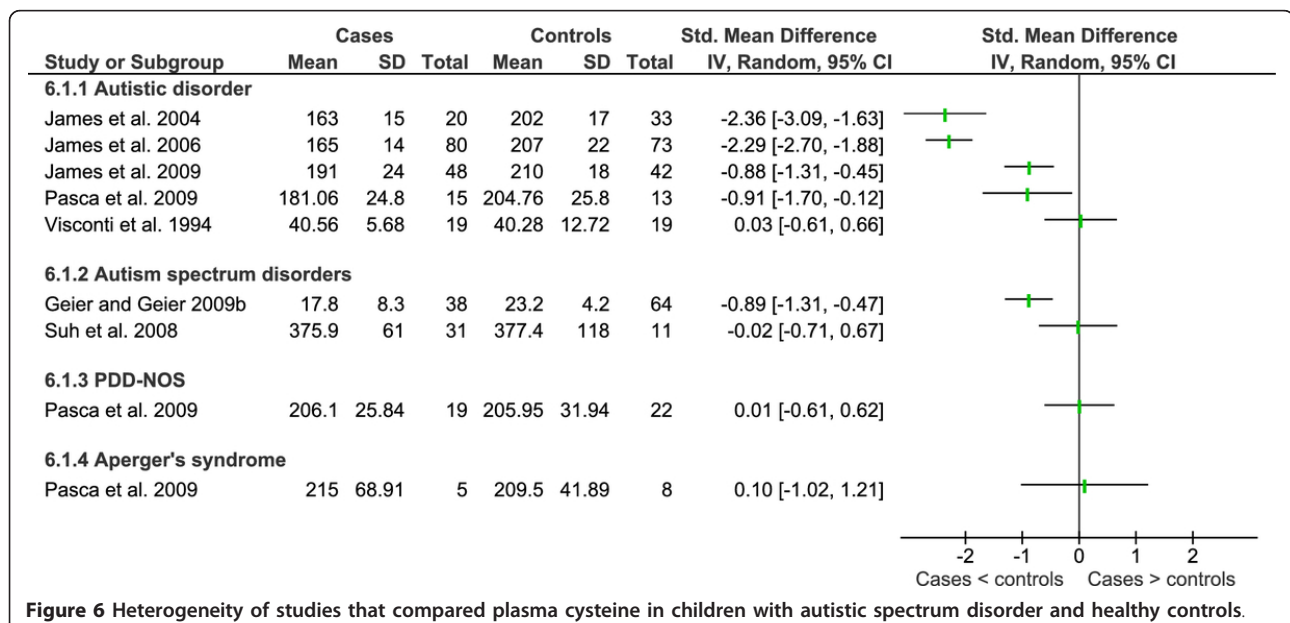


between studies include fasting status, differing laboratory methods and varied selection of controls.

A significant decrease in plasma total glutathione (tGSH) reported in four studies from the one research group in children with autistic disorder compared to controls [46-48,50] have been confirmed by another two research groups with respect to autistic disorder [81,82] as well as study of low functioning children with autism spectrum disorders [85] (Figure 7). Reduced glutathione has also been reported to be lower in the plasma of children with autism spectrum disorders [87,91]. In contrast, no significant difference for plasma tGSH [77] or erythrocyte tGSH [65] was reported for autism spectrum disorders

(mixed diagnoses). The later study compared cases to an adult reference range while noting that the paediatric range is lower. Whole blood tGSH was reported to be lower in autistic disorder but not significantly different for PDD-NOS or Asperger's Disorder [60]. Overall statistical heterogeneity was substantial for plasma tGSH ( $I^2 = 93\%$ ) however there was no statistical heterogeneity between diagnostic sub-groups ( $I^2 = 0\%$ ). Varying definition of cases and controls, laboratory and analytical methods may account for the range of heterogeneity.

The same major research group published four studies showing a significant increase in plasma oxidised glutathione in autistic disorder [46-48,50] which has been



**Table 9 In vivo studies examining an association between metabolites of the  $\gamma$ -glutamyl cycle or trans-sulfation pathway and autism spectrum disorders**

| Study  | Cases <sup>1</sup> | Controls <sup>1</sup>                   | P values   | Overall finding     | Comments |        |   |
|--|--------------------|---|--|---------------------|----------|--------|---|
| <b>Total glutathione (<math>\mu\text{mol/L}</math>)</b>    |                    |   |  |                     |          |        |   |
| Plasma   | AD                 | Rose et al. 2008 [50]                   | 5.69 $\pm$ 1.3 <sup>7</sup><br>5.08 $\pm$ 1.3 <sup>8</sup>       | 7.53 $\pm$ 1.7      | < 0.001  | lower  | ALAD CG + CC significantly lower than GG $p = 0.007$ .                                      |
| Erythrocyte  | ASD                | Pastural et al. 2009 [82]               | Not provided   | Not provided        | < 0.05   | lower  |   |
|  | ASD                | Adams et al. 2009 [65,67]               | 501 $\pm$ 246  | 427-714             |          | same   | Paediatric values are lower than the reference range for adults provided by the laboratory. |
| Whole  | AD                 | Pasca et al. 2009 <sup>4</sup> [60]     | 161.16 $\pm$ 41.36   | 242.67 $\pm$ 118.77 | 0.02     | lower  | SEM converted to SD. Not treated to prevent oxidation                                       |
| Blood  | PDD-NOS            | Pasca et al. 2009 <sup>4</sup> [60]     | 209.96 $\pm$ 94.63   | 213.32 $\pm$ 98.55  | ns       | same   | As above.   |
|  | AS                 | Pasca et al. 2009 <sup>4</sup> [60]     | 147.31 $\pm$ 74.26   | 171.29 $\pm$ 92.69  | ns       | same   | As above.   |
| <b>Free glutathione (<math>\mu\text{mol/L}</math>)</b>     |                    |   |  |                     |          |        |   |
| Plasma   | AD                 | James et al. 2006 <sup>3,4</sup> [47]   | 1.4 $\pm$ 0.5  | 2.2 $\pm$ 0.9       | < 0.0001 | lower  |   |
|  |                    | Rose et al. 2008 [50]                   | 1.60 $\pm$ 0.5 <sup>7</sup><br>1.4 $\pm$ 0.4 <sup>8</sup>        | 2.2 $\pm$ 0.9       | < 0.001  | lower  | ALAD CG + CC significantly lower than GG $P = 0.02$<br>Same controls as James et al. 2006.  |
|  |                    | James et al. 2009 <sup>3,4</sup> [48]   | 1.5 $\pm$ 0.4  | 2.8 $\pm$ 0.8       | 0.008    | lower  | Cases with abnormal methylation or tGSHGSSG only.   |
| <b>Reduced glutathione (<math>\mu\text{mol/L}</math>)</b>  |                    |   |  |                     |          |        |   |
| Plasma   | ASD                | Geier & Geier 2006 [66]                 | 64% lower  |                     | < 0.01   | lower  | Sample preparation not provided.  |
|  |                    | Geier & Geier 2009 [90]                 | 3.1 $\pm$ 0.53   | 4.2 $\pm$ 0.72      | < 0.0001 | lower  |   |
|  | ASD                | Geier & Geier 2009 [91]                 | 3.14 $\pm$ 0.56  | 4.2 $\pm$ 0.72      | < 0.0001 | lower  |   |
|  |                    | Adams et al. 2011 [87]                  | 3.23 $\pm$ 0.48  | 4.09 $\pm$ 0.79     | < 0.0001 | lower  |   |
| <b>Oxidised glutathione (<math>\mu\text{mol/L}</math>)</b> |                    |   |  |                     |          |        |   |
| Plasma   | AD                 | Rose et al. 2008 [50]                   | 0.32 $\pm$ 0.12 <sup>7</sup><br>0.32 $\pm$ 0.12 <sup>8</sup>     | 0.24 $\pm$ 0.1      | < 0.001  | higher | No significant difference between ALAD CG + CC and GG.                                      |
| <b>Total glutathione: oxidised glutathione</b>             |                    |   |  |                     |          |        |   |
| Plasma   | AD                 | James et al. 2004 <sup>3</sup> [46]     | 8.6 $\pm$ 3.5  | 25.5 $\pm$ 8.9      | < 0.001  | lower  |   |
|  |                    | James et al. 2006 <sup>3,4</sup> [47]   | 14.7 $\pm$ 6.2   | 28.2 $\pm$ 7.0      | < 0.001  | lower  |   |
|  |                    | Rossignol et al. 2007 <sup>5</sup> [49] | 28.47 $\pm$ 4.59 <sup>9</sup><br>44.68 $\pm$ 14.19 <sup>10</sup> | 28.2 $\pm$ 7.0      |          |        | Cases more likely to be severe as requested<br>HBOT. Controls from James et al. 2006.       |
|  |                    | Rose et al. 2008 [50]                   | 20.45 $\pm$ 8.7 <sup>7</sup><br>17.4 $\pm$ 5.7 <sup>8</sup>      | 28.2 $\pm$ 7.0      | < 0.001  | lower  | ALAD CG + CC significantly lower than GG<br>$P = 0.03$ . Controls from James et al. 2006.   |
|  |                    | James et al. 2009 <sup>3,4</sup> [48]   | 21 $\pm$ 6   | 47 $\pm$ 18         | < 0.005  | lower  | Cases abnormal methylation or tGSHGSSG only.  |
| <b>Free: oxidised glutathione</b>                          |                    |   |  |                     |          |        |   |
| Plasma   | AD                 | James et al. 2006 <sup>3,4</sup> [47]   | 4.9 $\pm$ 2.2  | 7.9 $\pm$ 3.5       | < 0.0001 | lower  |   |

**Table 9 In vivo studies examining an association between metabolites of the  $\gamma\gamma\gamma$ -glutamyl cycle or trans-sulfation pathway and autism spectrum disorders (Continued)**

|                                      |     |   |   |                |         |        |  |
|--------------------------------------|-----|---|---|----------------|---------|--------|--|
|                                      |     | Rose et al. 2008 [50]                   | 5.64 ± 2.6 <sup>7</sup><br>4.81 ± 1.8 <sup>8</sup>          | 7.9 ± 3.5      | < 0.001 | lower  | ALAD CG + CC significantly lower than GG P = 0.05                                    |
| <b>Reduced: oxidised glutathione</b> |     |   |   |                |         |        |  |
| Plasma                               | ASD | Adams et al. 2011 [87]                  | 8.0 ± 3.2   | 10.1 ± 4.5     | 0.01    | lower  |  |
|                                      |     | Al-Yafee et al. 2011 [85]               | 8.03 ± 2.46   | 26.07 ± 5.03   | 0.001   | lower  |  |
| <b>Homocysteine (μmol/L)</b>         |     |   |   |                |         |        |  |
| Plasma                               | AD  | Moretti et al. 2005 [54]                | 6   | 4-14           |         | ns     | Case study compared with reference values  |
|                                      |     | Pastural et al. 2009 [82]               | Not provided  | Not provided   | ns      | ns     | Result control normalised graph.   |
| Serum                                |     | Geier & Geier 2006 [66]                 | 62% lower   |                | < 0.01  |        | Does not state whether fasted or not.  |
| CSF                                  | AD  | Moretti et al. 2005 [54]                | 0.424   | 0.032-0.114    |         | high   | Case study compared with reference values  |
| <b>Cysteine (μmol/L)</b>             |     |   |   |                |         |        |  |
| Plasma                               | AD  | Pastural et al. 2009 [82]               | Not provided  | Not provided   | < 0.05  | lower  | Result provided graphically as relative to homocysteine.                             |
|                                      |     | Geier & Geier 2006 [66]                 | 81% lower   |                | < 0.01  |        |  |
| Serum                                | AD  | Visconti et al. 1994 <sup>6</sup> [69]  | 40.56 ± 5.68 <sup>11</sup><br>41.04 ± 15.56 <sup>12</sup>   | 40.26 ± 12.72  | ns      | same   |  |
| <b>Cystine (mmol/L)</b>              |     |   |   |                |         |        |  |
| Plasma                               | AD  | Khaleeluddin & Philpott 1980 [93]       | 5/6 low   |                |         |        | Concentrations and reference range not provided.                                     |
|                                      |     | D'Eufemia et al. 1995 <sup>3</sup> [70] | 78.3 ± 17.5   | 72.5 ± 19.9    | ns      | ns     | Units incorrectly labelled mmol/L in Table 1. Correctly labelled μmol/L in Figure 3. |
|                                      |     | Adams et al. 2011 [87]                  | 32.2 ± 8.2  | 34.8 ± 7.4     | ns      | ns     | Fasted.  |
| <b>Cystathione (μmol/L)</b>          |     |   |   |                |         |        |  |
| Plasma                               | AD  | Khaleeluddin & Philpott 1980 [93]       | 1/6 high  |                |         |        |  |
| Serum                                | ASD | Geier & Geier 2006 [66]                 | 68% low   |                | < 0.05  |        | Details of sample preparation not provided.  |
| <b>Cysteinylglycine (μmol/L)</b>     |     |   |   |                |         |        |  |
| Plasma                               | AD  | James et al. 2006 <sup>4,5</sup> [47]   | 38.9 ± 11   | 39.4 ± 7.3     | 0.78    | ns     |  |
|                                      |     | James et al. 2009 <sup>4,5</sup> [48]   | 40 ± 9  | 45 ± 6         | < 0.005 | lower  | Cases abnormal methylation or tGSHGSSG only.   |
|                                      |     | Suh et al. 2008 [77]                    | 17.5 ± 6.8  | 10.5 ± 4.1     | 0.0008  | higher |  |
| <b>Serine (μmol/L)</b>               |     |   |   |                |         |        |  |
| Serum                                | AD  | Visconti et al. 1994 <sup>6</sup> [69]  | 130.59 ± 24.84 <sup>9</sup><br>151.45 ± 50.43 <sup>10</sup> | 143.79 ± 30.08 | ns      | ns     |  |
|                                      |     | D'Eufemia et al. 1995 <sup>3</sup> [70] | 163.5 ± 32.1  | 169.1 ± 47.3   | ns      | ns     | Units incorrectly labelled mmol/L in Table 1. Correctly labelled μmol/L in Figure 3. |

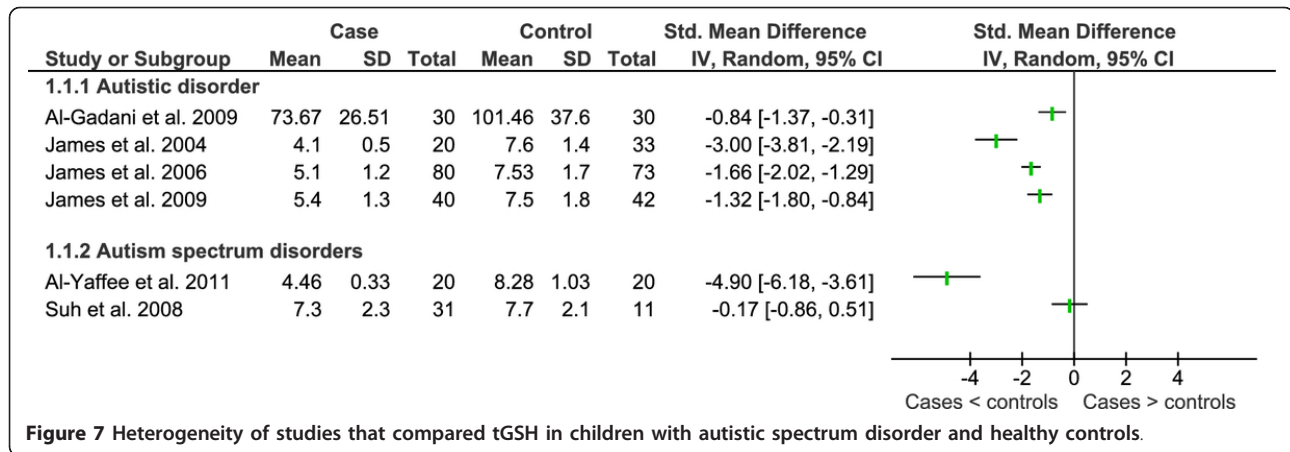
**Table 9 In vivo studies examining an association between metabolites of the  $\gamma\text{-}\gamma\text{-}$  glutamyl cycle or trans-sulfation pathway and autism spectrum disorders (Continued)**

|   |         |   |                             |                |   |
|---|---------|---|-----------------------------|----------------|---|
|   |         | Shinohe et al. 2006 <sup>4</sup> [75]   | ns                          | ns             | Results presented graphically   |
| Plasma  | AD      | Pasca et al. 2009 <sup>5</sup> [60]     | 99.46 ± 13.56               | 125.23 ± 47.31 | 0.08 trend<br>SEM converted to SD.  |
|   | ASD     | Aldred et al. 2003 [88]                 | 104 ± 25                    | 94.7 ± 21      | 0.04 high<br>Results presented graphically.   |
| (platelet poor)                                 |         | Tirouvanziam et al. 2011 [86]           | 85.23 ± 26.5                | 112.30 ± 27.3  | 0.0013 low<br>Data obtained from author.  |
|   | PDD-NOS | Pasca et al. 2009 <sup>5</sup> [60]     | 113.31 ± 22.84              | 114.6 ± 38.23  | ns ns<br>SEM converted to SD.   |
|   | AS      | Pasca et al. 2009 <sup>5</sup> [60]     | 96.2 ± 14.3                 | 124.75 ± 49.07 | ns ns<br>SEM converted to SD.   |
| <b>Glycine (<math>\mu\text{mol/L}</math>)</b>   |         |   |                             |                |   |
| Serum   | AD      | Visconti et al. 1994 <sup>6</sup> [69]  | 225.88 ± 36.23 <sup>8</sup> | 245.63 ± 60.19 | ns ns<br>Results presented graphically  |
|   |         |   | 225.06 ± 24.07 <sup>9</sup> |                | ns ns<br>SEM converted to SD.   |
|   |         | D'Eufemia et al. 1995 <sup>3</sup> [70] | 246.7 ± 52.2                | 257.7 ± 55.3   | ns ns<br>Units incorrectly labelled mmol/L in Table 1. Correctly labelled $\mu\text{mol/L}$ in figures. |
|   |         | Shinohe et al. 2006 <sup>4</sup> [75]   |                             |                | ns ns<br>Results presented graphically  |
| Plasma  | AD      | Pasca et al. 2009 [60]                  | 184.20 ± 46.67              | 217.23 ± 52.46 | 0.09 ns<br>SEM converted to SD  |
|   | ASD     | Aldred et al. 2003 [88]                 |                             |                | ns ns<br>Results presented graphically.   |
|   |         | Adams et al. 2011 [87]                  | 267 ± 81                    | 273 ± 101      | ns ns<br>Data obtained from author.   |
| (platelet poor)                                 |         | Tirouvanziam et al. 2011 [86]           | 192.8 ± 46.8                | 190.3 ± 49.5   | ns ns<br>SEM converted to SD.   |
|   | PDD-NOS | Pasca et al. 2009 <sup>5</sup> [60]     | 207.94 ± 10.31              | 209.73 ± 42.31 | ns ns<br>Units incorrectly labelled mmol/L in Table 1. Correctly labelled $\mu\text{mol/L}$ in figures. |
|   | AS      | Pasca et al. 2009 <sup>5</sup> [60]     | 188.6 ± 30.39               | 224.0 ± 49.81  | ns ns<br>SEM converted to SD.   |
| <b>Glutamate (<math>\mu\text{mol/L}</math>)</b> |         |   |                             |                |   |
| Serum   | AD      | Visconti et al. 1994 <sup>6</sup> [69]  | 61.89 ± 22.69 <sup>8</sup>  | 77.16 ± 50.01  | ns ns<br>High correlation with AD/R social scores ( $r = 0.523$ , $P = 0.026$ )                         |
|   |         |   | 72.28 ± 44.42 <sup>9</sup>  | 77.16 ± 50.01  | ns ns<br>SEM converted to SD.   |
|   |         | D'Eufemia et al. 1995 <sup>3</sup> [70] | 77.3 ± 24.5                 | 72.4 ± 21.2    | ns ns<br>Units incorrectly labelled mmol/L in Table 1. Correctly labelled $\mu\text{mol/L}$ in figures. |
|   |         | Shinohe et al. 2006 <sup>4</sup> [75]   | 89.2 ± 21.5                 | 61.1 ± 16.5    | < 0.001 higher<br>High correlation with AD/R social scores ( $r = 0.523$ , $P = 0.026$ )                |
|   | ASD     | Adams et al. 2011 [87]                  | 65 ± 15                     | 55 ± 13        | 0.001 higher<br>Data obtained from authors.   |
| Plasma  |         | Arnold et al. 2003 [89]                 | 51 ± 32 <sup>13</sup>       | 48 ± 15        | ns<br>Data obtained from authors.   |
|   |         |   | 42 ± 23 <sup>14</sup>       | 48 ± 15        | ns<br>Data obtained from authors.   |
| Plasma (platelet poor)                          |         | Tirouvanziam et al. 2011 [86]           | 104.06 ± 33.85              | 82.71 ± 34.20  | 0.039 higher<br>Data obtained from authors.   |
| <b>Glutamate (nmol/10<sup>6</sup>)</b>          |         |   |                             |                |   |
| Platelets                                       | AD      | Rolf et al. 1993 <sup>4</sup> [68]      | 48 ± 1.2                    | 6.0 ± 1.2      | < 0.02 lower<br>Findings presented graphically.   |

**Table 9 In vivo studies examining an association between metabolites of the  $\gamma$ - $\gamma$ -glutamyl cycle or trans-sulfation pathway and autism spectrum disorders (Continued)**

| <b>Vitamin B6 (nmol/L)</b>                          |     |   |                |                               |              |        |
|---|-----|---|----------------|-------------------------------|--------------|--------|
| Plasma  | AD  | Sankar 1979 <sup>7</sup> [92]             | 753.6 ± 31.7   | Reference Range (147.8-254.2) | Not provided | higher |
|   |     | Khaleeluddin & Philpott 1980 [93]         | 4/9 high       |                               | Not provided | higher |
|   | ASD | Adams et al. 2004 [73]                    | 224.55 ± 30.35 | 129.47                        | < 0.001      | higher |
|   |     | Adams et al. 2006 [76]                    | 226.58 ± 84.97 | 145.66 ± 35.60                | 0.001        | higher |
| <b>Vitamin B6 as pyridoxyl-5-phosphate (nmol/L)</b> |     |   |                |                               |              |        |
| Erythrocyte   | ASD | Adams et al. 2011 [87]                    | 72.44 ± 64.75  | 61.51 ± 21.45                 | ns           | ns     |
| <b>Selenium (μmol/L)</b>                            |     |   |                |                               |              |        |
| Erythrocytes  | AD  | Joy and McGinnis 2007 <sup>4,5</sup> [78] | 3.12 ± 0.54    | 3.67 ± 0.38                   | 0.0006       | lower  |
| Whole blood   | ASD | Adams et al. 2011 [87]                    | 2.63 ± 0.36    | 2.67 ± 0.25                   | ns           | ns     |
| <b>Selenium (μg/g)</b>                              |     |   |                |                               |              |        |
| Erythrocytes  | ASD | Adams et al. 2011 [87]                    | 0.24 ± 0.04    | 0.23 ± 0.03                   | ns           | ns     |

<sup>1</sup>Mean ± standard deviation <sup>2</sup>Cases relative to controls <sup>3</sup>Free from relevant medications <sup>4</sup>Free from supplementation <sup>5</sup>Most on folic acid or methyl-cobalamin <sup>6</sup>One case, one control on thioridazine <sup>7</sup>ALAD GG polymorphism <sup>8</sup>ALAD CG + CC polymorphism <sup>9</sup>Prior to 40 sessions HBOT at 1.3 atm <sup>10</sup>Prior to 40 sessions HBOT at 1.5 atm <sup>11</sup>Normal EEG <sup>12</sup>Abnormal EEG <sup>13</sup>Normal diet <sup>14</sup>Gluten/caseine free diet ns not significant AD Autistic disorder ASD Autism spectrum disorder PDD-NOS Pervasive developmental disorder- not otherwise specified. GSH Reduced glutathione GSSG Oxidised glutathione tGSH Total glutathione ALAD Delta aminolevulinic acid dehydratase HBOT Hyperbaric oxygen therapy SEM Standard error of the mean SD standard deviation



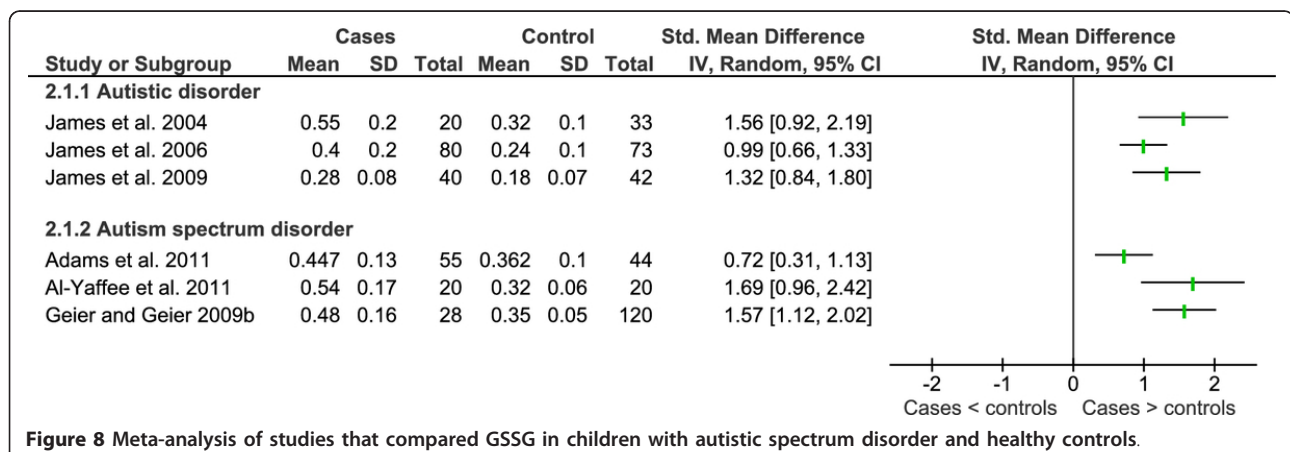
replicated by a further two research groups for autism spectrum disorders [87,91] (Figure 8). Overall statistical heterogeneity was substantial ( $I^2 = 67\%$ ), however, there was no statistical heterogeneity between diagnostic subgroups ( $I^2 = 0\%$ ). Meta-analysis resulted in a SMD of 1.25 (95% CI 0.87 - 1.62) across 203 cases and 184 controls using a random effects model. As stated above, data from James *et al.* 2009 was not included in the analysis but is included in the tables accompanying the Figure.

The same research group published 5 studies reporting significantly lower plasma tGSH:GSSG ratios in children with autistic disorder [46-50]. The same controls were used for three of the studies [47,49,50]. One of these studies tGSH and tGSH:GSSG were significantly lower (by 10.7% and 14.9% respectively) in children with autism who were heterozygous or homozygous for the delta aminolevulinic acid dehydratase (ALAD) 177 GC mutation, whereas there was no difference in GSSG [50]. This polymorphism is found in the heme biosynthesis pathway where it has been associated with altered toxicokinetics of lead levels and elevated blood levels of lead [100-102]. Three studies have shown that GSH:

GSSG is lower in children with autism spectrum disorders [85,87,91] lending credence to the original findings.

The findings for cysteinyl-glycine, a breakdown product of glutathione, were inconsistent. Initially it was reported that there was no significant difference in cysteinyl-glycine in children with autistic disorder compared to controls [47]. A later study by the same research group was limited to children with abnormal methylation or GSH:GSSG showed that it had a significantly lower level in autistic disorder than in controls [48], however, a subsequent study of children with autism spectrum disorders showed that it was significantly higher than in controls [77]. Differences in inclusion criteria, laboratory methods and control of confounding variables may account for the difference in the findings.

Finally, the relationship between GSH and the immune system was clearly demonstrated in a large study which showed that children with autistic disorder universally have lower natural killer cell activity in peripheral mononuclear cells than those without the disorder which correlated with low intracellular levels of GSH as shown in Table 10 [79]. Furthermore, when





**Table 10 Correlation between NK cell activity and reduced glutathione in peripheral blood mononuclear cells obtained from children with autistic disorder**

| Study               | NK Activity (LU) | GSH (ng/3 × 10 <sup>6</sup> PBMCs) | Significance             | Finding  |
|---------------------|------------------|------------------------------------|--------------------------|--|
| Vojdani et al. 2008 | 0-10             | 610 ± 286                          | ANOVA F = 3.99, P < 0.05 | Direct correlation between cellular levels of reduced glutathione and NK lytic activity. |
| [79]                | 11-20            | 947 ± 458                          |                          |  |
|                     | 21-50            | 1760 ± 895                         |                          |  |
|                     | 51-100           | 2280 ± 1341                        |                          |  |

NK Natural killer cells LU Lytic units GSH reduced glutathione ng nanograms PBMCs Peripheral blood mononuclear cells ANOVA One way analysis of variance

GSH was added to the culture medium, natural killer cell activity increased more in lymphocytes obtained from children with low natural killer cell activity than those with normal activity. Corresponding data were not provided for control children.

Glycine and glutamine are key compounds for the biosynthesis of glutathione obtained through dietary sources. Eight studies showed no significant difference in serum or plasma glycine in children with autistic disorder [60,69,70,75], autism spectrum disorders (mixed diagnoses) [86-88] PDD-NOS or Asperger's Syndrome compared to controls [60]. There was no statistical heterogeneity overall ( $I^2 = 0$ ) or between diagnoses ( $I^2 = 0$ ) for plasma glycine. The data was not pooled because there were only two studies for plasma and two for serum with data in a suitable form to combine.

In contrast the findings for glutamine were inconsistent with two studies reporting no significant difference in serum glutamine in children with autistic disorder compared with controls [69,89], a later study reporting a significant decrease in platelet glutamine in children with autistic disorder [68] and further studies that reported serum glutamate to be significantly higher in adults with autistic disorder [75] and children with autism spectrum disorders (mixed diagnoses) than controls [87].

Of the six studies that measured co-factors of the  $\gamma$ -glutamyl cycle or trans-sulphuration pathway, five studies showed elevated levels of vitamin B6 in children with autistic disorder or autism spectrum disorders compared to controls [73,76,87,92,93], one showed a decrease in erythrocyte selenium in children with autistic disorder [78] and another showed no change in whole blood selenium in children with an autism spectrum disorder compared to controls [87].

#### Intervention studies

The findings of the six studies that report the outcome of interventions in autism focussed on normalising abnormalities in  $\gamma$ -glutamyl cycle or trans-sulphuration pathway metabolites [46,48,49,54,64] are presented in Table 11. An initial pilot study showed that supplementation of children with autistic disorder with 800  $\mu$ g folic acid and 1,000  $\mu$ g betaine per day for two months

normalised homocysteine levels and improved GSH:GSSG [46]. The addition of 75  $\mu$ g/kg methyl-cobalamin injected twice weekly for one month further normalised GSH:GSSG. The same researchers conducted a larger intervention in 42 children with autistic disorder who had evidence of reduced methylation capacity or GSH:GSSG in which they were supplemented with folic acid and methyl-cobalamin for 3 months [48]. The new regimen, which used half the dose of folic acid of that used in the pilot study, resulted in significant increases in metabolites of the trans-sulphuration pathway as well as GSH:GSSG, although they remained below those of the control children. Objective behavioural measures showed an improvement, although all participants were still well below normal (data not published).

Recently, a double blinded randomised controlled trial was published in which participants were administered either methyl-cobalamin or placebo for 6 weeks and then their treatment switched without washout for a further 6 weeks [64]. Overall, there was no significant change in GSH, GSH:GSSG or behaviour. Thirty percent of participants, however, showed a significant improvement in objective behavioural measures which correlated with improved plasma GSH and GSH:GSSG levels. Interpretation of the findings is difficult because data was only provided for the 'responder' subgroup and this did not include standard deviations or units for plasma GSH or GSH:GSSG, nor did it state whether the GSH values reported in Figure 4 of their paper represented tGSH or reduced glutathione. Furthermore, data showing whether 'responders' had lower baseline concentrations of GSH or GSH:GSSG were not provided.

Additionally, a case report of a child with autistic disorder and cerebral folate deficiency showed the normalisation of low cerebral spinal fluid homocysteine following 2 weeks supplementation with 0.5 mg folic acid/kg/day increasing to 1.0/kg/day for 3 months [54]. Finally, a 40 session trial of hyperbaric oxygen therapy showed that it has no effect on plasma GSH:GSSG in children with autistic disorder [49] and, as discussed above, incomplete data and selective reporting make it hard to interpret the findings of a randomised trial of topical glutathione before chelation [65].

**Table 11 *In vivo* studies involving interventions directed at normalising  $\gamma$ -glutamyl cycle or trans-sulfation pathway metabolites**

| Study   | Intervention                              | Dose & duration   | Study size  | Findings  | Comments   |
|---|---|---|---|---|--|
| <b>Interventions involving folate cycle metabolites</b> |   |   |   |   |  |
| Bertoglio et al. 2010 [64]                              | Methyl-cobalamin                          | 64.5 $\mu$ g/kg methyl-cobalamin or placebo injected every third day 6 wks washout period).   | 32+ cases started the trial of which 30 finished. | Overall, no significant difference in GSH, GSH: GSSG or behavioural outcomes. $\uparrow$ GSH, $\uparrow$ GSH:GSSG and improved behavioural outcomes in 9/30 children. | Primary outcome behavioural response. Findings for GSH and tGSH:GSSG presented as bar charts for responder group only. Dispersion and units not provided.  |
| James et al. 2009 [48]                                  | Folinic acid + methyl-cobalamin           | 400 $\mu$ g folinic acid bd + 75 $\mu$ g/kg methyl-cobalamin injected every third day 3 mo.   | 48 cases selected for low SAM: SAH or GSH: GSSG.  | $\uparrow$ homocysteine, $\uparrow$ cystathione $\uparrow$ cysteine, $\uparrow$ tGSH & $\uparrow$ tGSH: GSSG.   | Excluded 26% of cases because normal SAM: SAH and/or tGSH: GSSG. Following the intervention, tGSH:GSSG was still significantly lower in cases than controls. There was no change in SAM or SAH levels. |
| James et al. 2004 [46]                                  | Folinic acid + betaine                    | 800 $\mu$ g folinic acid + 1,000 $\mu$ g betaine bd 3 mo.   | 8 cases   | $\uparrow$ homocysteine, $\uparrow$ cystathione $\uparrow$ cysteine, $\uparrow$ tGSH, $\uparrow$ tGSH: GSSG, $\downarrow$ SAH & $\downarrow$ adenosine                | Improved but did not normalise tGSH and GSSG.  |
|   | Folinic acid + betaine + methyl-cobalamin | As above + 75 $\mu$ g/kg methyl-cobalamin injected twice weekly 1 mo.   | 8 cases   | $\uparrow$ homocysteine, $\uparrow$ cystathione, $\uparrow$ cysteine, $\uparrow$ tGSH, $\uparrow$ tGSH: GSSG, $\downarrow$ GSSG                                       | Normalised tGSH & tGSH: GSSG. Improved but did not normalise GSSG.   |
| Moretti et al. 2005 [54]                                | Folinic acid                              | 0.5 mg/kg/d folinic acid for 2 wk, 1.0 mg/kg/d thereafter 3 mo.   | 1 case  | Normalised ( $\downarrow$ ) cerebral spinal fluid homocysteine.   |  |
| <b>Other interventions</b>                              |   |   |   |   |  |
| Adams et al. 2009 [65,67]                               | Chelation therapy                         | Glutathione (180 mg) or placebo cream daily for 7 days followed by 10 mg/kg DMSA in 3 doses/day for 3 days to screen for high urinary   | 64 cases  | Significantly $\downarrow$ variance in erythrocyte glutathione levels 1-2 months after one round of DMSA treatment.   | Topical glutathione had no effect on erythrocyte glutathione. Behavioural instruments not validated  |
|   |   | excretion of metal ions. 'High excreters' from the topical glutathione arm given a further 6 rounds of DMSA and those from the topical placebo arm given 6 rounds of a placebo. | 26 DMSA<br>15 placebo                             | No data provided for post intervention glutathione.   | for measurement of autism severity. ADOS(diagnostic test) administered pre and post second intervention, but not at baseline.  |
| Rossignol et al. 2007 [49]                              | Hyperbaric oxygen therapy (HBOT)          | 1.3 atm (n = 12) or 1.5 atm (n = 6) for 45 mins $\times$ 40 sessions (ie 4.6 times/wk $\times$ 9 wk)  | 18 cases  | No significant difference in plasma tGSH:GSSG before or after either intervention.  |  |

SAM s-adenosyl-methionine SAH s-adenosyl-homocysteine tGSH total glutathione GSSH Oxidised glutathione bd twice daily DMSA dimercaptosuccinic acid ADOS autism diagnostic observation schedule

### Genetic studies of the $\gamma$ -glutamyl cycle and trans-sulphuration pathway

The six studies that presented data on genetic polymorphisms of the  $\gamma$ -glutamyl cycle or trans-sulphuration pathway are summarised in Table 12. The best powered of these studies examined genetic variation in 42 genes (308 single nucleotide polymorphisms (SNPs)) related to glutathione, including those coding for enzymes that use glutathione as a co-factor (not included in this review), in 318 families from the Autism Genetic Resource Exchange repository [87]. Several SNPs located in the genes for cystathionine  $\gamma$ -ligase (CTH), alcohol dehydrogenase 5, GCL and glutaredoxin showed significant or

suggestive associations with autism spectrum disorders. Interaction models confirmed a significant association between CTH, glutaredoxin and glutaredoxin 3 and autism (OR = 3.78 (95% CI 2.36-6.04)).

The study found no association between any of the GST genes and autism [94]. This is in contrast to a previous study of case parent trios that found that homozygote cases for the GST-M\*1 gene deletion (GST-M1\*0) showed increased risk of autistic disorder [96] and a later case control study that reported a borderline association between the GST-M\*1 gene deletion (GST-MI\*0) and autistic disorder and a significant interaction between the GST-MI\*0 deletion and the reduced folate carrier 80A >

**Table 12 Genes associated with the  $\alpha$ -glutamyl cycle or trans-sulfation pathway**

| Study                              | Study Size                                       | Population                     | Gene   | Polymorphism                         | P value                 | Finding  |
|------------------------------------|--|--------------------------------|--|--------------------------------------|-------------------------|--|
| <b>Glutathione-s- transferases</b> |  |                                |  |                                      |                         |  |
| <b>GST-M1</b>                      |  |                                |  |                                      |                         |  |
| Buyske et al. 2006 [96]            | 172 controls (54 case parent trios)              | U.S. (non-Hispanic Caucasians) | GST-M1   | GST-M1*0                             | 0.028 (Pearson's ratio) | Homozygotes with deletion at increased risk.                             |
| James et al. 2006 [47]             | 360 cases 205 controls                           | U.S. (97% Caucasian)           | GST-M1   | GST-M1*0                             | 0.067 <sup>1,2</sup>    | Suggestive increase of null genotypes in cases.                          |
| Bowers et al. 2011 [94]            | 318 families (1,149 individuals)                 | U.S.                           | GST-M1   | tag SNPs                             | ns                      | No association.  |
| James et al. 2006 [47]             | As above   | As above                       | GST-M1 + RFC                                       | GST-M1*0: RFC<br>80A > G interaction | 0.00014 <sup>1,2</sup>  | This combination more frequent in cases. OR 3.78(95%CI 1.80, 7.95).      |
| <b>GST-P1</b>                      |  |                                |  |                                      |                         |  |
| Serajee et al. 2004 [97]           | 196 case parent trios                            | U.S.                           | GST-P1   | rs947894                             | ns                      |  |
| Bowers et al. 2011 [94]            | As above   |                                | GST-P1   | tag SNPs                             | ns                      |  |
| <b>GST-T1</b>                      |  |                                |  |                                      |                         |  |
| James et al. 2006 [47]             | As above   | As above                       | GST-T1   | GST-T1*0                             | ns <sup>2</sup>         |  |
| <b>Glutathione peroxidase</b>      |  |                                |  |                                      |                         |  |
| Ming et al. 2010 [95]              | 101 cases (results based on 68 trios and 3 duos) | U.S.                           | GPX-1  | GCG repeat<br>ALA5<br>ALA6<br>ALA7   | ns<br>0.017<br>ns       | Under-transmitted  |
| Bowers et al. 2011 [94]            | As above   | As above                       | GPX-1  | tag SNPs                             | ns                      |  |
| <b>ALAD</b>                        |  |                                |  |                                      |                         |  |
| Rose et al. 2008 [50]              | 451 cases<br>251 controls                        | U.S.                           | ALAD   | rs1800435                            | 0.023<br>0.6            | GC OR 1.65 (1.05-2.63)<br>CC OR 1.82 (0.14-95.73)                        |
| <b>Interaction analysis</b>        |  |                                |  |                                      |                         |  |
|                                    |  |                                | ALAD/rs1800435*GC                                  |                                      |                         | ALAD/RFC GG/AA reference   |
|                                    |  |                                | RFC 80A > G combined                               |                                      | 0.162                   | ALAD/RFC GC/AA OR 2.25 (0.72-7.06)                                       |
|                                    |  |                                | genotype associated with increased risk of autism. |                                      | 0.001<br>0.237          | ALAD/RFC GC/AA OR 3.98 (1.70-9.32)<br>ALAD/RFC GC/GG OR 1.79 (0.68-4.73) |
| <b>Study</b>                       | <b>Study Size</b>                                | <b>Population</b>              | <b>Gene</b>  | <b>Polymorphism</b>                  | <b>P value</b>          | <b>Finding</b>   |
| <b>Other relevant genes</b>        |  |                                |  |                                      |                         |  |
| <b>Single SNP analysis</b>         |  |                                |  |                                      |                         |  |

**Table 12 Genes associated with the  $\alpha$ ? $\alpha$ ?-glutamyl cycle or trans-sulfation pathway (Continued)**

| Bowers et al. 2011 [94] | As above  | CTH                            | rs12737233 | 0.002 (0.30) <sup>3</sup> | CT OR 0.91 (0.65-1.28)   |  |
|-------------------------|---|--------------------------------|------------|---------------------------|--|--|
|                         | (Validation study in 3327 individuals from independent AGRE families) | GCLC                           | rs761141   | 0.02 (0.10) <sup>3</sup>  | TT OR 4.83 (1.85-12.59)<br>CT OR 2.10 (1.20-3.69) TT OR 1.67 (0.91-3.09) |  |
|                         |   | DPP-1                          | tag SNPs   | 0.003 (0.08) <sup>3</sup> | CT OR 2.70 (1.47-4.98)<br>TT OR 2.23 (1.16-4.28)                         |  |
|                         |   | DPP-2                          | tag SNPs   | ns                        |  |  |
|                         |   | DPP-3                          | tag SNPs   | ns                        |  |  |
|                         |   | GGT-7                          | tag SNPs   | ns                        |  |  |
|                         |   | GGT-5                          | tag SNPs   | ns                        |  |  |
|                         |   | GGT-LA4                        | tag SNPs   | ns                        |  |  |
|                         |   | GPX-2                          | tag SNPs   | ns                        |  |  |
|                         |   | GPX-4                          | tag SNPs   | ns                        |  |  |
|                         |   | GPX-7                          | tag SNPs   | ns                        |  |  |
|                         |   | GST-A2                         | tag SNPs   | ns                        |  |  |
|                         |   | GST-A3                         | tag SNPs   | ns                        |  |  |
|                         |   | GST-A4                         | tag SNPs   | ns                        |  |  |
|                         |   | GST-K1                         | tag SNPs   | ns                        |  |  |
|                         |   | GST-M2                         | tag SNPs   | ns                        |  |  |
|                         |   | GST-M3                         | tag SNPs   | ns                        |  |  |
|                         |   | GST-M4                         | tag SNPs   | ns                        |  |  |
|                         |   | GST-M5                         | tag SNPs   | ns                        |  |  |
|                         |   | GST-O1                         | tag SNPs   | ns                        |  |  |
|                         |   | GST-T2                         | tag SNPs   | ns                        |  |  |
|                         |   | GST-Z1                         | tag SNPs   | ns                        |  |  |
|                         |   | GST-CD                         | tag SNPs   | ns                        |  |  |
|                         |   | <b>Interaction analysis</b>    |            |                           |  |  |
|                         |   | CTH rs12737233* <sup>C</sup>   |            |                           | OR 3.78 (95%CI 2.36-6.04)  |  |
|                         |   | GLRX3 rs370834* <sup>A</sup>   |            |                           |  |  |
|                         |   | GLRX rs17216887* <sup>G</sup>  |            |                           |  |  |
|                         |   | allele combination associated  |            |                           |  |  |
|                         |   | with increased risk of autism. |            |                           |  |  |

ns not significant GTP1 Glutathione-S-transferase P1 GSTM1 Glutathione-S-transferase M1 RFC Reduced folate carrier SHMT Serine hydroxyl methyl transferase GPx-1 Glutathione peroxidase-1 ALA Poly-alanine repeat polymorphism CTH Cystathione gamma lyase GCLC  $\gamma$ -cysteine synthase, catalytic sub-unit GST-CD Glutathione-S-transferase, C terminal domain GGT-7  $\gamma$ -glutamyl transferase  
 5 GGT-LA4  $\gamma$ -glutamyl transferase like activity 4 DPP Dipeptidase GLRX3 Glutaredoxin 3 GLRX Glutaredoxin SNP Single nucleotide polymorphism  
<sup>1</sup> Calculated by authors using EpiInfo version 6.0 Statcalc <sup>2</sup> Uncorrected <sup>3</sup>P value from validation study in independent AGRE families

G [47]. Previous studies failed to find an association between GST-T1 [47] or GST-P1 and autism [97].

Ming et al. 2010 Found that a polyalanine repeat polymorphism in the GPx gene (*GPx-1*) was associated with autistic disorder [95]. Under-transmission of the variation encoding six alanine residues (ALA6) was observed in the families with autistic disorder, suggesting that this allele may be protective. The authors acknowledge that their interpretation is limited by inadequate knowledge of the function of the ALA alleles of *GPx-1* gene.

#### Studies of glutathione related enzyme activity

As shown in Table 13 GPx-1 activity has been the subject of seven studies [63,71,72,74,81,83,84]. The findings were inconsistent in plasma where two studies reported higher activity in cases than controls [72,81] and two reported lower activity [71,83]. A further four studies examined GPx-1 activity in erythrocytes. Of these, two reported lower activity [63,71] and two reported no significant difference between cases and controls [74,84]. No significant difference between cases and controls was reported for GPx-1 activity in platelets [63]. In addition, a recently published study showed that glutathione-S-transferase activity was significantly reduced in children with low functioning autism spectrum disorders and there was a trend towards lower activity of glutathione reductase [85].

#### Discussion

The findings of this systematic review support the assertion that children with autism spectrum disorders are more likely to have significantly lower tGSH and GSH and significantly increased GSSG, resulting in a significantly lower GSH:GSSG than children without autism. Our review show that although serum homocysteine and cystathione levels are not significantly different in children with autism spectrum disorders compared to those without, serum cysteine is significantly lower in autistic disorder (Figures 4, 5 and 6) which supports the assertion that cysteine production may be the rate limiting step in glutathione synthesis [31-34]. The lack of an association in other forms of autism spectrum disorders suggests that low cysteine may be associated with autism severity [60,77].

As no significant differences in serum homocysteine, cystathionine (Figures 4 and 5) or serine levels [60,69,70,75] were observed in children with autistic disorder compared to those without, it can be inferred that the low levels of cysteine may be caused by decreased cystathione lyase activity and/or increased utilisation of sulphate and/or taurine and/or lower dietary intake or absorption of cysteine in children with autistic disorder. An exploration of the functional significance of several SNPs in the gene for

cystathione lyase associated with autistic disorder may shed light on this putative relationship [94].

It is worth noting that a reduction in total glutathione implies a problem with synthesis of glutathione, whereas a decrease in GSH implies an anomaly in GSH:GSSG. Both have been observed in autism spectrum disorders [46-48,50,77,81,82,85,87,91]. As the bioavailability of cysteine is the rate limiting factor for synthesis of GSH [31-34], the lower cysteine levels detected in serum of children with autistic disorder could be an important factor leading to the lower levels of GSH observed in many children with this condition [46-48,50,81,82]. While several studies examined GPx activity [63,71,72,74,81,83,84] or its polymorphisms [94,95], only one examined glutathione reductase or glutathione-S-transferase activity [85].

The higher level of GSSG observed in the serum of many children with autism spectrum disorders [46-48, 50,85,87,91] is likely to truly reflect increased oxidative stress as there is no significant difference in GPx-1 activity in serum or platelets [63,84] and GPx-1 is significantly lower in the erythrocytes of children with autistic disorder compared to controls. As cysteine itself may have strong anti-oxidant properties, its lower concentration in children with autistic disorder may contribute to increased oxidation of GSH [47].

Glutathione synthesis also requires dietary glutamate and glycine. No difference in serum levels of glutamate has been reported between children with autistic disorder and controls [69,70], however, it was significantly higher in adults with autistic disorder [75], the level being positively correlated with social functioning as measured by the autism diagnostic interview (ADI-R) [103] which is commonly used to evaluate the core symptoms of autism which may shed light on the significantly higher level detected in mixed samples of children with autism spectrum disorders [86,87]. In contrast, platelet glutamic acid was significantly lower in children with autistic disorder [68]. Platelet glutamate receptors have been shown to have heightened sensitivity in major depression, schizophrenia and other psychoses [104-106]. This relationship has not, however, been examined in autism spectrum disorders to date.

Serum and plasma glycine does not differ between children [60,69,70,86,87] or adults [107] with and without autism spectrum disorders. As glycine acts as a powerful inhibitory neurotransmitter in the brain and spinal chord [108] and glycine transporters are differentially expressed throughout the CNS [109], it may be relevant for future studies of children with autism spectrum disorders to examine whether there are abnormalities in expression of glycine transporters in the CNS or in glycine transport across the choroid plexus in children with autism spectrum disorders.

**Table 13 Studies examining enzymes of the  $\gamma$ -glutamyl cycle or transsulphuration pathway in autism**

| Source                           | Study                      | Study size (Male:Female)                         | Cases <sup>1</sup>       | Controls <sup>1</sup>  | P values | Overall finding | Units of measure               |
|----------------------------------|----------------------------|--|--------------------------|------------------------|----------|-----------------|--------------------------------|
| <b>Glutathione peroxidase</b>    |                            |  |                          |                        |          |                 |                                |
| Plasma                           | Yorbik et al. 2002 [71]    | 45 cases, (39 M, 6 F) 41 controls, (35 M, 6 F)   | 270 $\pm$ 40             | 390 $\pm$ 80           | < 0.05   | low             | U/L                            |
|                                  | Sögüt et al. 2003 [72]     | 27 cases, (16 M, 11 F) 30 controls, (16 M, 14 F) | 409 $\pm$ 11.3           | 24.2 $\pm$ 6.3         | < 0.0001 | high            | U/L                            |
|                                  | Al-Gadani et al. 2009 [81] | 30 cases, (22 M, 8 F) 30 controls, (20 M, 10 F)  | 2468.8 $\pm$ 999.3       | 1438.5 $\pm$ 611.2     | < 0.05   | high            | U/L                            |
|                                  | Mostafa et al. 2010 [83]   | 44 cases, (30 M, 14 F) 44 controls, (30 M, 14 F) | 441.5 (100) <sup>2</sup> | 589 (176) <sup>2</sup> | < 0.001  | low             | U/L                            |
| Erythrocytes                     | Golse et al. 1978 [63]     | 24 cases, (17 M, 7 F)<br>6 controls, (2 M, 4 F)  | 4.7 $\pm$ 0.29           | 8.45 $\pm$ 0.95        | < 0.0001 | low             | U/g haemoglobin                |
|                                  | Yorbik et al. 2002 [71]    | 45 cases, (39 M, 6 F) 41 controls, (35 M, 6 F)   | 2872 $\pm$ 2.64          | 38.01 $\pm$ 5.03       | < 0.05   | low             | U/g haemoglobin                |
|                                  | Pasca et al. 2006 [74]     | 12 cases, (9 M, 3 F)<br>9 controls, (6 M, 3 F)   | 7.75 $\pm$ 0.93          | 7.45 $\pm$ 0.65        | ns       | ns              | U/g haemoglobin                |
|                                  | Vergani et al. 2011 [84]   | 28 cases (21 M, 7 F)<br>32 controls (20 M, 12 F) |                          |                        | ns       | ns              | nmols NADPH/min/mg haemoglobin |
| Platelets                        | Golse et al. 1978 [63]     | 36 cases, (15 M, 21 F) 21 controls, (9 M, 12 F)  | 51.53 $\pm$ 1.61         | 46.56 $\pm$ 2.69       | ns       | ns              | U/g platelet protein           |
| <b>Glutathione reductase</b>     |                            |  |                          |                        |          |                 |                                |
| Plasma                           | Al-Yafee et al. 2011 [85]  | 20 cases (20 M, 0 F)<br>20 controls (20 M, 0 F)  | 70.25 $\pm$ 16.35        | 60.19 $\pm$ 15.42      | 0.052    | trend high      | U/L                            |
| <b>Glutathione-s-transferase</b> |                            |  |                          |                        |          |                 |                                |
| Plasma                           | Al-Yafee et al. 2011 [85]  | 20 cases (20 M, 0 F)<br>20 controls (20 M, 0 F)  | 0.42 $\pm$ 0.18          | 0.73 $\pm$ 0.37        | 0.002    | low             | $\mu$ mol/min/ml               |

ns Not significant <sup>1</sup>Mean  $\pm$  standard deviation <sup>2</sup> Median and interquartile range



Vitamin B6, in the form of pyridoxal-5'-phosphate, is the cofactor for 5 enzymes in the  $\gamma$ -glutamyl cycle and trans-sulphuration pathway: cystathionine  $\beta$ -synthase, cystathionine  $\gamma$ -lyase, cytoplasmic and mitochondrial serine hydroxymethyltransferase and glycine decarboxylase in the mitochondria. The significant increase in plasma vitamin B6 in many children with autism spectrum disorders [73,76,87,92,93] could potentially reflect diminished cellular uptake or inefficiency of cells to retain or store B6. Impaired bioavailability of vitamin B6 may affect the nervous system because it is required for the synthesis of neurotransmitters including serotonin, dopamine and taurine [110]. There is clearly a need to test whether cellular vitamin B6 is diminished in autism spectrum disorders. In addition, erythrocyte selenium was shown to be significantly lower in one study of children with autistic disorder [78] although there was no significant difference in GPx activity which contains selenium in its active site. These observations coupled with the findings of the intervention studies [46,47] suggest that future studies should examine multiple nutritional status biomarkers of pathways linked with the  $\gamma$ -glutamyl cycle (e.g. cysteine, folate, vitamin B12, vitamin B6) to determine more effective and accurate risk factor analysis.

The association between the genes of the  $\gamma$ -glutamyl cycle and autistic disorder is not well studied, although recently a relatively large study using a pathway approach showed a three-SNP joint interaction effect for glutaredoxin, glutaredoxin 3 and cystathionine lyase (OR = 3.78, 95% CI: 2.36, 6.04) as well as marginal associations for cystathionine lyase, the gamma-glutamylcysteine synthetase, catalytic subunit and glutaredoxin 3 suggesting that variation in genes involved in counterbalancing oxidative stress may contribute to autism [94]. The clinical significance of the borderline association between the GST-M\*1 gene deletion (*GST-M1\*0*) and autistic disorder [47,96] and the interaction between the *GST-M1\*0* deletion and the reduced folate carrier 80A > G [47] has yet to be established. *GST-M1\*0* frequencies range from 42-60% in Caucasians [111] and *GST-M1\*0* appears to be associated with social behavioural changes in mice compared to wild type [112]. No significant associations were found for *GST-T\*1* [47]. Although no association between *GST-PI* has been shown in children with autism [94,97], the *GSTPI\*A* haplotype was over-transmitted

to mothers of children with autistic disorder (OR 2.67 95% confidence interval, 1.39- 5.13) [113]. Bowers *et al* 2011 did not find an association with autistic disorder and other members of the two GST super-families, many of which have GPx activity [22].

The observation that cytosolic and mitochondrial glutathione redox ratios are significantly lower in lymphoblastoid cell lines obtained from children with autistic

disorder than their non-autistic siblings [80] coupled with a positive correlation between low natural killer cell activity and reduced glutathione levels in children with autistic disorder [79] suggests that these cells may be more GSH dependent. It is reasonable to hypothesise that children with autistic disorder could benefit from supplementation with glutathione or its precursors. Studies are needed to establish the relationship between extracellular and intracellular glutathione in its oxidised and reduced form because intracellular may ultimately be a better biomarker to study cellular effects proposed in theoretical models.

Finally, phenotypic approaches have been taken to study resistance to environmental or endogenous stressors that are thought to be causative agents for other diseases (e.g. cancer) using lymphocytes or fibroblasts [114-118]. This approach has the advantage that it integrates the effect of both genetic background and nutritional status of the cells in evaluating disease susceptibility. The only published study applying this approach to date in autistic disorder found that the GSH:GSSG was significantly lower in whole cell extracts and mitochondria from lymphoblastoid cells obtained from children with autistic disorder compared to controls but there was no difference in response to nitrosative stress as measured by GSH:GSSG in mitochondria [80].

The consistent observations indicating a role for glutathione metabolism in autism spectrum disorders highlight the potential role of glutathione in them. Replication of these results by other research groups in a wider range of populations is required, however, before definite conclusions can be made. Meta-analyses of observational studies are subject to confounding and selection bias which can distort the findings to produce spurious results [119]. We have been careful not to make our meta-analyses a prominent component of the review, but rather to use the data to identify the extent of confounding and selection biases and to examine possible sources of heterogeneity between the results of individual observational studies.

Common challenges for any systematic review of studies investigating autism spectrum disorders include changes in the criteria for diagnosis and laboratory methodology, the emphasis of early studies on individual metabolites rather than metabolic systems (e.g. one carbon metabolism), and low statistical power. Only a few studies matched cases and controls for age [60,68,74,75,83] and/or gender [48,60,75,83,89] despite the acknowledged difference in prevalence between genders [99], and most did not state the source of controls [48,59,60,63,68-70, 73,74,76,78,81,84].

Only two of the reviewed studies corrected for multiple comparisons (e.g. Bonferroni or Nyholt correction)

[86,97]. The few studies that matched cases with controls did not use a paired method of analysis such as McNemar's test which biases the results towards null. Further, we were unable to replicate the p values for three studies [46,47,87].

## Conclusions

This review of published studies indicates that evidence for the involvement of the  $\gamma$ -glutamyl cycle and trans-sulphuration pathway in autism spectrum disorders should be further explored with higher quality and lower risk bias studies in order to ascertain the significance of these pathways with respect to clinical outcomes. Trends noted from currently published studies include decreased total glutathione and increased GSSG in children with autism spectrum disorders with no association found between homocysteine or cystathione in these children. There is a trend for cysteine to be lower in children with autistic disorder but not in other autism spectrum disorders. There is a need for large, well designed studies that link metabolites, co-factors and genes of the  $\gamma$ -glutamyl cycle and trans-sulphuration pathway with objective behavioural outcomes to be conducted in children with autism spectrum disorders. Future risk factor analysis of autism spectrum disorders should include consideration of multiple biomarkers of nutrients involved in pathways linked with the  $\gamma$ -glutamyl cycle and the interaction of genotype with nutritional status.

## Abbreviations

ADI-R: Autism diagnostic interview - revised; ALAD: Delta aminolevulinic acid dehydratase; CARS: Childhood Autism Rating Scale; CNS: Central nervous system; d.f.: Degrees freedom; DSM: American Psychiatric Association's Diagnostic and Statistical Manual of Mental Disorders; fGSH: Free reduced glutathione; GCL: Glutamate cysteine ligase; GCT:  $\gamma$ -glutamyl cyclotransferase; GGT:  $\gamma$ -glutamyl-transferase; GPx: Glutathione peroxidase; GSH: Reduced glutathione; GSH:GSSG: Glutathione redox ratio; GSH-R: Glutathione reductase; GS: Glutathione synthetase; GSSG: Oxidised glutathione; GST: Glutathione-S-transferases;  $Mg^{2+}$ : Magnesium ions;  $Mn^{2+}$ : Manganese ions; Q: Cochran's Q (a measure of statistical heterogeneity); SMD: Standardised mean difference; tGSH: Total glutathione

## Acknowledgements

The authors wish to thank Mr Maxime Francois for his translation of Golse et al. 1978. The comments and suggestions provided by the anonymous reviewers significantly improved this manuscript and we greatly appreciate their efforts.

## Author details

<sup>1</sup>Sansom Institute for Health Research, University of South Australia, City East Campus, Adelaide, SA 5000, Australia. <sup>2</sup>Food and Nutritional Sciences, Commonwealth Scientific and Industrial Research Organisation, Kintore Ave, Adelaide, SA 5000, Australia.

## Authors' contributions

PM was responsible for all aspects of the manuscript. MA, CO'D and PT checked the references, PM and CO'D assessed the quality of included studies and the draft was reviewed by MA, CO'D, PT and MF. All authors read and approved the final manuscript.

## Competing interests

The authors declare that they have no competing interests.

Received: 25 September 2011 Accepted: 24 April 2012

Published: 24 April 2012

## References

1. Wing L, Gould J: Severe impairments of social interaction and associated abnormalities in children: epidemiology and classification. *J Autism Dev Disord* 1979, **9**:11-29.
2. Baird G, Simonoff E, Pickles A, Chandler S, Loucas T, Meldrum D, Charman T: Prevalence of disorders of the autism spectrum in a population cohort of children in South Thames: the Special Needs and Autism Project (SNAP). *Lancet* 2006, **368**:210-215.
3. Baron-Cohen S, Scott FJ, Allison C, Williams J, Bolton P, Matthews FE, Brayne C: Prevalence of autism-spectrum conditions: UK school-based population study. *Br J Psychiatry* 2009, **194**:500-509.
4. Wazana A, Bresnahan M, Kline J: The autism epidemic: fact or artifact? *J Am Acad Child Adolesc Psychiatry* 2007, **46**:721-730.
5. Folstein SE, Rosen-Sheidley B: Genetics of autism: complex aetiology for a heterogeneous disorder. *Nat Rev Genet* 2001, **2**:943-955.
6. Ritvo ER, Freeman BJ, Pingree C, Mason-Brothers A, Jorde L, Jenson WR, McMahon WM, Petersen PB, Mo A, Ritvo A: The UCLA-University of Utah epidemiologic survey of autism: prevalence. *Am J Psychiatry* 1989, **146**:1032-1036.
7. Geschwind DH: Autism: many genes, common pathways. *Cell* 2009, **135**:391-395.
8. Autism Genome Project Consortium: Functional impact of global rare copy number variation in autism spectrum disorders. *Nature* 2010, **466**:368-372.
9. der Veenstra-van Weele J, Cook EH Jr: Molecular genetics of autism spectrum disorder. *Mol Psychiatry* 2004, **9**:819-832.
10. Grandjean P, Landrigan PJ: Developmental neurotoxicity of industrial chemicals. *Lancet* 2006, **368**:2167-2177.
11. Kern J, Jones AM: Evidence of toxicity, oxidative stress and neuronal insult in autism. *Journal of Toxicology and Environmental Health, Part B* 2006, **9**:485-499.
12. Slotkin TA, Vevin ED, Seidler FJ: Comparative developmental neurotoxicity of organophosphate insecticides: effects on brain development are separable from systemic toxicity. *Environ Health Perspect* 2006, **114**:746-751.
13. van den Pol AN: Viral infections in the developing and mature brain. *Trends Neurosci* 2006, **29**:398-406.
14. Horvath K, Perman J: Autistic disorder and gastrointestinal disease. *Current Opinions in Pediatrics* 2002, **14**:583-587.
15. White JF: Intestinal pathophysiology in autism. *Experimental Biological Medicine* 2003, **228**:639-649.
16. Chauhan A, Chauhan V: Oxidative stress in autism. *Pathophysiology* 2006, **13**:171-181.
17. Newschaffer CJ, Croen LA, Daniels J, Giarelli E, Grether JK, Levy SE, Mandell DS, Miller LA, Pinto-Martin J, Reaven J, et al: The epidemiology of Autism spectrum disorders. *Annu Rev Public Health* 2007, **28**:235-258.
18. Wang L, Angley MT, Gerber JP, Young RL, Abarno DV, McKinnon RA, Sorich MJ: Is urinary indolyl-3 acryloylglycine a biomarkers for autism with gastrointestinal symptoms? *Biomarkers* 2009, **14**:596-609.
19. Yap IKS, Angley M, Veselkov KA, Holmes E, Lindon JC, Nicholson JK: Urinary metabolic phenotyping differentiates children with autism, from their unaffected siblings and age-matched controls. *J Proteome Res* 2010, **9**:2996-3004.
20. Hertz-Picciotto I, Croen LA, Hansen R, Jones CR, van Water J, Pessah IN: The CHARGE study: an epidemiologic investigation of genetic and environmental factors contributing to autism. *Environ Health Perspect* 2006, **114**:1119-1125.
21. Meister A: Glutathione. In *The Liver: Biology and Pathobiology. Volume 2*. Edited by: Aria IM, Jakoby WB, Popper H, Schachter D, Shafritz DA. New York: Raven Press; 1988:401-417.
22. Hayes JD, Strange RC: Glutathione S-transferase polymorphisms and their biological consequences. *Pharmacology* 2000, **61**:154-166.
23. Lu SC: Regulation of hepatic glutathione synthesis: current concept and controversies. *FASEB* 1999, **13**:1169-1183.



24. Chance B, Sies H, Boveris A: **Hydroperoxide metabolism in mammalian organs.** *Physiol Rev* 1979, **59**:527-605.
25. Jackson AL, Loeb LA: **The contribution of endogenous sources of DNA damage to the multiple mutations in cancer.** *Mutat Res* 2001, **477**:7-21.
26. Shen Z, Wu W, Wu SL: **Activated leukocytes oxidatively damage DNA, RNA, and the nucleotide pool through halide-dependent formation of hydroxyl radical.** *Biochemistry (Mosc)* 2000, **39**:5474-5482.
27. Fidelus RK, Tsan MF: **Glutathione and lymphocyte activation: a function of aging and auto-immune disease.** *Immunology* 1987, **61**:503-508.
28. Filomeni G, Rotilio G, Ciriolo MR: **Cell signalling and the glutathione redox system.** *Biochem Pharmacol* 2002, **64**:1057-1064.
29. Hwang C, Sinsky AJ, Lodish HF: **Oxidised redox state of glutathione in the endoplasmic reticulum.** *Science* 1992, **257**:1496-1502.
30. Sies H: **Glutathione and its cellular functions.** *Free Radic Biol Med* 1999, **27**:916-921.
31. Dalton TP, Chen Y, Schneider SN, Nebert DW, Shertzer HG: **Genetically altered mice to evaluate glutathione homeostasis in health and disease.** *Free Radic Biol Med* 2004, **37**:1511-1526.
32. Dickinson DA, Levonen AL, Moellering DR, Arnold EK, Zhang H, Darley-Usmar VM, Forman HJ: **Human glutamate cysteine ligase gene regulation through the electrophile response element.** *Free Radic Biol Med* 2004, **37**:1152-1157.
33. Meister A, Tate SS: **Glutathione and related gamma-glutamyl compounds: biosynthesis and utilization.** *Annu Rev Biochem* 1976, **45**:559-604.
34. Meister A, Anderson ME: **Glutathione.** *Annual Reviews of Biochemistry* 1983, **45**:711-760.
35. Rotruck JT, Pope AL, Ganther HE, Swanson AB, Hafeman DG, Hoekstra WG: **Selenium: biochemical role as a component of glutathione peroxidase.** *Science* 1972, **179**:588-590.
36. Boyland E, Chasseaud LF: **The role of glutathione and glutathione S-transferases in mercapturic acid biosynthesis.** *Adv Enzymol Relat Areas Mol Biol* 1969, **32**:173-219.
37. Ikeda Y, Taniguchi N: **Gene expression of gamma-glutamyltranspeptidase.** *Methods Enzymol* 2005, **401**:408-425.
38. Hanigan HM, Pitot HC: *Carcinogenesis* 1985, **6**:165.
39. Finkelstein JD: **Methionine metabolism in mammals.** *J Nutr Biochem* 1990, **1**:228-237.
40. Vitvitsky V, Thomas M, Ghorpade A, Gendelman HE, Banerjee R: **A functional transsulfuration pathway in the brain links to glutathione homeostasis.** *J Biol Chem* 2006, **281**:35785-35793.
41. Jones DP: **Redefining oxidative stress.** *Antioxidant and Redox Signalling* 2006, **8**:1865-1879.
42. Kemp M, Go YM, Jones DP: **Non-equilibrium thermodynamics of thiol/disulfide redox systems: a perspective on redox systems biology.** *Free Radic Biol Med* 2008, **44**:921-937.
43. Schafer FQ, Beutner GR: **Redox environment of the cell as viewed through the redox state of the glutathione disulfide/glutathione couple.** *Free Radic Biol Med* 2001, **30**:1191-1212.
44. Kulkarni A, Wilson DM: **The involvement of DNA-damage and repair defects in neurological dysfunction.** *Am J Hum Genet* 2008, **82**:539-566.
45. Sen CK: **Cellular thiols and redox-regulated signal transduction.** *Current Topics in Cell Regulation* 2000, **36**:1-30.
46. James SJ, Cutler P, Melnyk S, Jernigan S, Janak L, Gaylor DW, Neubrandner JA: **Metabolic biomarkers of increased oxidative stress and impaired methylation capacity in children with autism.** *Am J Clin Nutr* 2004, **80**:1611-1617.
47. James SJ, Melnyk S, Jernigan S, Cleves MA, Halsted CH, Wong DH, Cutler P, Bock K, Boris M, Bradstreet JJ, et al: **Metabolic endophenotype and related genotypes are associated with oxidative stress in children with autism.** *Am J Med Genet B* 2006, **141**:947-956.
48. James SJ, Melnyk S, Fuchs G, Reid T, Jernigan S, Pavliv O, Hubanks A, Gaylor DW: **Efficacy of methylcobalamin and folic acid treatment on glutathione redox status in children with autism.** *Am J Clin Nutr* 2009, **89**:425-430.
49. Rossignol DA, Rossignol LW, James SJ, Melnyk S, Mumper E: **The effects of hyperbaric oxygen therapy on oxidative stress, inflammation, and symptoms in children with autism: an open-label pilot study.** *BMC Pediatrics* 2007, **7**:36. doi:10.1186/1471-2431-7-36.
50. Rose S, Melnyk S, Savenka A, Hubanks A, Jernigan S, Cleves M, James SJ: **The frequency of polymorphisms affecting lead and mercury toxicity among children with autism.** *Am J Biochem Biotech* 2008, **4**:85-94.
51. American Psychiatric Association: *Diagnostic and Statistical Manual of Mental Disorders: text revision (DSM-IV-R)*. 4 edition. Washington D.C.; American Psychiatric Association; 2000.
52. Schopler E, Reichler R, Renner B: **Toward objective classification of childhood autism: Childhood Autism Rating Scale (CARS).** *J Autism Dev Disord* 1980, **10**:91-103.
53. Wells GA, Shea B, O'Connell D, Peterson J, Welch V, Losos M, Tugwell P: **The Newcastle-Ottawa Scale (NOS) for assessing the quality of nonrandomised studies in meta-analyses.** *Book The Newcastle-Ottawa Scale (NOS) for assessing the quality of nonrandomised studies in meta-analyses (Editor ed.^eds.)* City: Ottawa: Ottawa Health Research Institute.
54. Moretti P, Sahoo T, Hyland K, Bottiglieri R, Peters SU, Del Gaudio D, Roa B, Curry S, Zhu H, Finnell RH, et al: **Cerebral folate deficiency with developmental delay, autism and response to folic acid.** *Neurology* 2005, **64**:1088-1090.
55. Higgins JPT, Altman DG, Sterne JAC: *Chapter 8: Assessing risk of bias in included studies Version 5.1.0 (updated March 2011).* *The Cochrane Collaboration* 2011 [http://www.cochrane-handbook.org], edn. Melbourne; 2011.
56. Australian National Health and Medical Research Council: *A guide to the development, implementation and evaluation of clinical practice guidelines* Canberra, Australia: Australian Government Publishing Service; 1999.
57. Cohen J: **A coefficient of agreement for nominal scales.** *Educ Psychol Meas* 1960, **20**:37-46.
58. The Cochrane Collaboration: *Review Manager (RevMan) [Computer program]* Copenhagen: The Nordic Cochrane Centre; 2011.
59. Adams M, Lucock M, Stuart J, Fardell S, Baker K, Ng X: **Preliminary evidence for involvement of the folate gene polymorphism 19 bp deletion-DHFR in occurrence of autism.** *Neurosci Lett* 2007, **422**:24-29.
60. Pasca S, Dronca E, Kaucsar T, Craciun EC, Endreffy E, Ferencz BK, Iftene F, Benga I, Cornean R, Banerjee R, Dronca M: **One carbon metabolism disturbances and the C677T MTHFR gene polymorphism in children with autism spectrum disorders.** *J Cell Mol Med* 2009, **13**:4229-4238.
61. Stroup DF, Berlin JA, Morton SC, Olkin I, Williamson GD, Rennie D, Moher D, Becker BJ, Sipe TA, Thacker SB: **Meta-analysis of observational studies in epidemiology: a proposal for reporting.** *J Am Med Assoc* 2000, **283**:2008-2012.
62. Little J, Higgins JPT, Ioannidis JPA, Moher D, Gagnon F, von Elm E, Khoury MJ, Cohen B, Davey-Smith G, Grimshaw J, et al: **Strengthening the reporting of genetic association studies (STREGA)—an extension of the strengthening the reporting of observational studies in epidemiology (STROBE) statement.** *J Clin Epidemiol* 2009, **62**:597-608.
63. Golse B, D-R P, Durosay P, Puget K, Michelson AM: **Perturbation de deux enzymes: la superoxyde-dismutase 1 et la glutathion-peroxydase dans la psychose infantile de developpement (autisme infantile). (Alterations in two enzymes: superoxide dismutase and glutathione peroxidase in infantile autism).** *Revue Neurologique (Paris)* 1978, **134**:699-705.
64. Bertoglio K, James SJ, Deprey L, Brule N, Hendren R: **Pilot study of the effect of methyl B12 treatment on behavioural and biomarker measures in children with autism.** *J Altern Complement Med* 2010, **16**:555-560.
65. Adams JB, Baral M, Geis E, Mitchell J, Ingram JL, Hensley A, Zappia I, Newmark S, Gehn E, Rubin RA, et al: **Safety and efficacy of oral DMSA therapy for children with autism spectrum disorders: part A - medical results.** *BMC Clin Pharmacol* 2009, **9**:1-22.
66. Geier DA, Geier MR: **A clinical and laboratory evaluation of methionine cycle-transsulfuration and androgen pathway markers in children with autistic disorders.** *Horm Res* 2006, **66**:182-188.
67. Adams JB, Baral M, Geis E, Mitchell J, Ingram J, Hensley A, Zappia I, Newmark S, Gehn E, Rubin RA, et al: **The severity of autism is associated with toxic metal body burden and red blood cell glutathione levels.** *J Toxicol* 2009, **532640**, 7 pages. doi:10.1155/2009/532640.
68. Rolf LH, Haarmann FY, Grotemeyer K-H, Kehrer H: **Serotonin and amino acid content in platelets of autistic children.** *ACTA Psychiatrica Scandinavia* 1993, **87**:312-316.
69. Visconti P, Piazzini S, Posar A, Santi A, Pipitone E, Rossi PG: **Amino acids and infantile autism.** *Developmental Brain Dysfunction* 1994, **7**:86-92.
70. D'Eufemia P, Finochiaro R, Celli M, Viozzi L, Monteleone D, Firdini O: **Low serum tryptophan to large neutral amino acids ratio in idiopathic infantile autism.** *Biomed Pharmacother* 1995, **49**:288-292.
71. Yorbik O, Sayal A, Akay C, Akbiyik DI, Sohmen T: **Investigation of antioxidant enzymes in children with autistic disorder.** *Prostaglandins Leukot Essent Fatty Acids* 2002, **67**:341-343.

72. Sogut S, Zoroglu SS, Ozyurt H, Yilmaz HR, Ozugurlu F, Sivash E, Yetkin O, Yanik M, Tutkun H, Savas HA, et al: **Changes in nitric oxide levels and antioxidant enzyme activities may have a role in the pathophysiological mechanisms involved in autism.** *Clin Chim Acta* 2003, **331**:111-117.
73. Adams JB, Holloway C: **Pilot study of a moderate dose multivitamin/mineral supplement for children with autistic spectrum disorder.** *J Altern Complement Med* 2004, **10**:1033-1039.
74. Pasca S, Nemes B, Vlase L, Gagyi C, Dronca E, Miu A, Dronca M: **High levels of homocysteine and low serum paraoxonase 1 arylesterase activity in children with autism.** *Life Sci* 2006, **78**:2244-2248.
75. Shinohe A, Hashimoto K, Nakamura K, Tsujii M, Iwata Y, STsuchiya KJ, Sekine Y, Suda S, Suzuki K, Sugihara G-I, et al: **Increased serum levels of glutamate in adult patients with autism.** *Prog Neuropsychopharmacol Biol Psychiatry* 2006, **30**:1472-1477.
76. Adams JB, George F, Audhya T: **Abnormally high plasma levels of vitamin B6 in children with autism not taking supplements compared to controls not taking supplements.** *J Altern Complement Med* 2006, **12**:59-63.
77. Suh JR, Walsh WJ, McGinnis WR, Lewis A, Ames BN: **Altered sulfur amino acid metabolism in immune cells of children diagnosed with autism.** *Am J Biochem Biotech* 2008, **4**:105-113.
78. Jory J, McGinnis WR: **Red-cell trace minerals in children with autism.** *Am J Biochem Biotech* 2007, **4**:101-104.
79. Vojdani A, Mumper E, Granpeesheh D, Mielke L, Traver D, Bock K, Hirani K, Neubrander JA, Woeller KN, O'Hara N, et al: **Low natural killer cell cytotoxic activity in autism: the role of glutathione IL-2 and IL-15.** *J Neuroimmunol* 2008, **205**:148-154.
80. James SJ, Rose S, Melnyk S, Jernigan S, Blossom S, Pavliv O, Gaylor DW: **Cellular and mitochondrial glutathione redox imbalance in lymphoblastoid cells derived from children with autism.** *FASEB* 2009, **23**:2374-2383.
81. Al-Gadani Y, El-Ansary A, Attas O, Al-Ayadhi L: **Metabolic biomarkers related to oxidative stress and antioxidant status in Saudi autistic children.** *Clin Biochem* 2009, **42**:1032-1040.
82. Pastural E, Ritchie S, Lu Y, Jin W, Kavianpour A, Su-Myat K, Heath D, Wood PL, Fisk M, Goodenowe DB: **Novel plasma phospholipid biomarkers of autism: mitochondrial dysfunction as a putative causative mechanism.** *Prostaglandins Leukot Essent Fatty Acids* 2009, **81**:253-264.
83. Mostafa GA, El-Hadidi ES, Hewedi DH, Abdou MM: **Oxidative stress in Egyptian children with autism: relation to autoimmunity.** *J Neuroimmunol* 2010, **219**:114-118.
84. Vergani L, Lanza C, Rivaro P, Abelmoschi ML, Genti S, Veneselli E, Minniti G, Grasselli E, Canesi L, Voci A: **Metals, metallothioneins and oxidative stress in blood of autistic children.** *Res Autism Spectr Disord* 2011, **5**:286-293.
85. Al-Yafee YA, LY A-A, Haq SH, El-Ansary AK: **Novel metabolic biomarkers related to sulfur dependent detoxification pathways in autistic patients of Saudi Arabia.** *BMC Neurol* 2011, **11**:139, doi:10.1186/1471-2377-11-139.
86. Tirouvanziam R, Obukhanych TV, Laval J, Aronov PA, Libove R, Banerjee AG, Parker KJ, O'Hara R, Herzenberg LA, Herzenberg LA, Hardan AY: **Distinct plasma profile of polar neutral amino acids, leucine and glutamate in children with autism spectrum disorders.** *J Autism Dev Disord* 2011, **42**(5):827-836.
87. Adams JB, Audhya T, McDonough-Means S, Rubin RA, Quig D, Geis E, Gehn E, Loresto M, Mitchell J, Atwood S, et al: **Nutritional and metabolic status of children with autism vs. neurotypical children, and the association with autism severity.** *Nutr Metab* 2011, **8**:34.
88. Aldred S, Moore KM, Fitzgerald M, Waring RH: **Plasma amino acid levels in children with autism.** *J Autism Dev Disord* 2003, **33**:93-97.
89. Arnold GL, Hyman SL, Mooney RA, Kirby RS: **Plasma amino acids profiles in children with autism: potential risk of nutritional deficiencies.** *J Autism Dev Disord* 2003, **33**:449-454.
90. Geier DA, Kern JK, Garver CR, Adams JB, Audhya T, Nataf R, Geier MR: **Biomarkers of environmental toxicity and susceptibility in autism.** *J Neurol Sci* 2009, **280**:101-108.
91. Geier DA, Kern J, Garver CR, Adams JB, Audhya T, Geier MR: **A prospective study of transsulfuration biomarkers in autistic disorders.** *Neurochemistry Research* 2009, **34**:386-393.
92. Siva Sankar DV: **Plasma levels of folates, riboflavin, vitamin B6 and ascorbate in severely disturbed children.** *J Autism Dev Disord* 1979, **9**:73-82.
93. Khaleeluddin K, Philpott WH: **I. The clinical report of ecologic and nutritional disorders in chronic mental and physical degenerative diseases. II. The significance of B6 and methionine metabolic disorders in mental disease.** *J Appl Nutr* 1980, **32**:37-52.
94. Bowers K, Li Q, Bressler J, Avramopoulos D, Newschaffer C, Fallin MD: **Glutathione pathway gene variation and risk of autism spectrum disorders.** *J Neurodevelop Disord* 2011, **3**:132-143.
95. Ming X, Johnson WG, Stenroos S, Mars A, Lambert GH, Buyske S: **Genetic variant of glutathione peroxidase 1 in autism.** *Brain Dev* 2010, **32**:105-109.
96. Buyske S, Williams TA, Mars AE, Stenroos ES, Ming SX, Wang R, Sreenath M, Factura MF, Reddy C, Lambert GH, Johnson WG: **Analysis of case-parent trios at a locus with a deletion allele association of GSTM1 with autism.** *BMC Genetics* 2006, **7**:8, doi:10.1186/1471-2156-7-8.
97. Serajee FJ, Nabi R, Zhong H, Huq AHMM: **Polymorphisms in xenobiotic metabolism genes and autism.** *J Child Neurol* 2004, **19**:413-417.
98. Lowe TL, Cohen DJ, Miller S, Young JG: **Folic acid and B<sub>12</sub> in autism and neuropsychiatric disturbances of childhood.** *J Am Acad Child Adolesc Psychiatry* 1981, **20**:104-111.
99. Fombonne E: **Epidemiological surveys of autism and other pervasive developmental disorders: an update.** *J Autism Dev Disord* 2003, **33**:365-382.
100. Woods JS, Echeverria D, Heyer NJ, Simmonds PL, Wilkerson J, Farin FM: **The association between genetic polymorphisms of coproporphyrinogen oxidase and an atypical porphyrinogenic response to mercury exposure in humans.** *Toxicol Appl Pharmacol* 2005, **206**:113-120.
101. Montenegro MF, Barbosa F Jr, Sandrim VC, Gerlach RF, Tanus-Santos JE: **A polymorphism in the delta-aminolevulinic acid dehydratase gene modifies plasma/whole blood lead ratio.** *Arch Toxicol* 2006, **80**:394-398.
102. Astrin KH, Bishop DF, Wetmur JG, Kaul B, Davidow B, Desnick RJ: **Delta-aminolevulinic acid dehydratase isozymes and lead toxicity.** *Ann NY Acad Sci* 1987, **514**:23-29.
103. Lord C, Rutter M, Le Couteur A: **Autism diagnostic interview - revised: a revised version of a diagnostic interview for caregivers of individuals with possible pervasive developmental disorders.** *J Autism Dev Disord* 1994, **24**:659-686.
104. Berk M, Plein H, Ferreira D: **Platelet glutamate receptor supersensitivity in major depressive disorder.** *Clin Neuropharmacol* 2003, **24**:129-132.
105. Berk M, Plein H, Belsham B: **The specificity of platelet glutamate receptor super-sensitivity in psychotic disorders.** *Life Sci* 2000, **66**:2427-2432.
106. Berk M, Plein H, Czismadia T: **Supersensitive platelet glutamate receptors as a possible peripheral marker in schizophrenia.** *Int Clin Psychopharmacol* 1999, **14**:119-122.
107. Shinohe A, Mori M: **Reply to: The hyperglutamatergic hypothesis of autism.** *Prog Neuropsychopharmacol Biol Psychiatry* 2008, **32**:912-913.
108. Langosch D, Becker CM, Betz H: **The inhibitory glycine receptor: a ligand-gated channel of the central nervous system.** *Eur J Biochem* 1990, **194**:1-8.
109. Zafra F, Aragon C, Olivares L, Danbolt NC, Grimenez C, Storm-Mathisen J: **Glycine transporters are differentially expressed among CNS cells.** *J Neurosci* 1995, **75**:3952-3969.
110. Gerster H: **The importance of vitamin-B6 for development of the infant: human medical and animal experimentation studies.** *Z Ernährungswiss* 1996, **35**:309-317.
111. Garte S, Gaspari L, Alexandrie AK, Ambrosone C, Autrup H, Autrup JL, Baranova H, Bathum L, Benhamou S, Boffetta P, et al: **Metabolic gene polymorphism frequencies in control populations.** *Cancer Epidemiol Biomarkers Prev* 2001, **10**:1239-1248.
112. Yochum CL, Bhattacharya P, Patti L, Mirochnitchenko O, Wagner GC: **Animal model of autism using GST-M1 knockout mice and early post-natal sodium valproate treatment.** *Behav Brain Res* 2010, **210**:202-210.
113. Williams TA, Mars AE, Buyske SG, Stenroos ES, Wang R, Factura-Santiago MF, Lambert GH, Johnson WG: **Risk of autistic disorder in affected offspring of mothers with a glutathione S-transferase P1 haplotype.** *Arch Pediatr Adolesc Med* 2007, **161**:356-361.
114. Rothfuss A, Schuetz P, Bochum S, Volm T, Eberhardt E, Kreienberg R, Vogel W, Speir G: **Induced micronucleus frequencies in peripheral lymphocytes as a screening test for carriers of a BRCA1 mutation in breast cancer families.** *Cancer Res* 2000, **60**:390-394.
115. El-Zein RA, Schabath MB, Etzel CJ, Lopez MS, Franklin JD, Spitz MR: **Cytokinesis-blocked micronucleus assay as a novel biomarker for lung cancer risk.** *Cancer Res* 2006, **66**:6449-6456.
116. Varga D, Hoegel J, Maier C, Jainta S, Hoehne M, Patino-Garcia B, Michel I, Schwarz-Boeger U, Kiechle M, Kreienberg R, Vogel W: **On the difference of**

- micronucleus frequencies in peripheral blood lymphocytes between breast cancer patients and controls. *Mutagenesis* 2006, **21**:313-320.
117. Willems P, Claes K, Baeyens A, Vandersickel V, Werbrouck J, de Ruyck K, Poppe B, van den Broecke R, Makar A, Marras E, et al: **Polymorphisms in non-homologous end-joining genes associated with breast cancer risk and chromosomal radiosensitivity.** *Genes Chromosomes Cancer* 2008, **47**:137-148.
118. El-Zein RA, Fenech M, Lopez MS, Spitz MR, Etzel CJ: **Cytokinesis-blocked micronucleus cytome assay biomarkers identify lung cancer cases amongst smokers.** *Cancer Epidemiol Biomarkers Prev* 2008, **17**:1111-1119.
119. Egger M, Schneider M, Davey Smith G: **Spurious precision? Meta-analysis of observational studies.** *Br Med J* 1998, **316**:140-144.

doi:10.1186/1743-7075-9-35

**Cite this article as:** Main et al.: The potential role of the antioxidant and detoxification properties of glutathione in autism spectrum disorders: a systematic review and meta-analysis. *Nutrition & Metabolism* 2012 **9**:35.

**Submit your next manuscript to BioMed Central  
and take full advantage of:**

- Convenient online submission
- Thorough peer review
- No space constraints or color figure charges
- Immediate publication on acceptance
- Inclusion in PubMed, CAS, Scopus and Google Scholar
- Research which is freely available for redistribution

Submit your manuscript at  
www.biomedcentral.com/submit

