

SHORT REPORT

Open Access



# Excellent option for mass testing during the SARS-CoV-2 pandemic: painless self-collection and direct RT-qPCR

Eva Kriegova<sup>1\*</sup>, Regina Fillerova<sup>1</sup>, Milan Raska<sup>1</sup>, Jirina Manakova<sup>1</sup>, Martin Dihel<sup>1</sup>, Ondrej Janca<sup>1</sup>, Pavel Sauer<sup>2</sup>, Martina Klimkova<sup>3</sup>, Petra Strakova<sup>4</sup> and Petr Kvapil<sup>5</sup>

## Abstract

The early identification of asymptomatic yet infectious cases is vital to curb the 2019 coronavirus (COVID-19) pandemic and to control the disease in the post-pandemic era. In this paper, we propose a fast, inexpensive and high-throughput approach using painless nasal-swab self-collection followed by direct RT-qPCR for the sensitive PCR detection of severe acute respiratory syndrome coronavirus 2 (SARS-CoV-2). This approach was validated in a large prospective cohort study of 1038 subjects, analysed simultaneously using (1) nasopharyngeal swabs obtained with the assistance of healthcare personnel and analysed by classic two-step RT-qPCR on RNA isolates and (2) nasal swabs obtained by self-collection and analysed with direct RT-qPCR. Of these subjects, 28.6% tested positive for SARS-CoV-2 using nasopharyngeal swab sampling. Our direct RT-qPCR approach for self-collected nasal swabs performed well with results similar to those of the two-step RT-qPCR on RNA isolates, achieving 0.99 positive and 0.98 negative predictive values (cycle threshold [Ct] < 37). Our research also reports on grey-zone viraemia, including samples with near-cut-off Ct values (Ct ≥ 37). In all investigated subjects (n = 20) with grey-zone viraemia, the ultra-small viral load disappeared within hours or days with no symptoms. Overall, this study underscores the importance of painless nasal-swab self-collection and direct RT-qPCR for mass testing during the SARS-CoV-2 pandemic and in the post-pandemic era.

**Keywords:** COVID-19, PCR diagnostics, Self-collection, Mass molecular testing, Nasal mid-turbinate swab, Post-pandemic era

## Introduction

Despite highly promising vaccines for the 2019 coronavirus disease (COVID-19), the key to bringing the pandemic under control worldwide and normalising all aspects of daily life in the near future is to combine vaccination with existing preventive measures and effective mass testing to detect individuals in the acute phase [25]. Therefore, cheap, easy, rapid, sensitive and

high-throughput testing strategies are critical. Despite the introduction of promising rapid antigen tests, RT-qPCR protocols, which can detect severe acute respiratory syndrome coronavirus 2 (SARS-CoV-2) nucleic acid in respiratory tract specimens, remain the gold standard for COVID-19 diagnostics, mainly due to their excellent sensitivity and specificity [12, 22]. Additionally, there is an urgent need to find reliable alternatives to sample collection by healthcare personnel to expand the testing capacity and to provide easier access to testing and painless sampling [26, 29]. Many challenges remain regarding the interpretation of obtained RT-qPCR data, mainly relating to grey-zone viraemia (which includes samples

\*Correspondence: eva.kriegova@email.cz

<sup>1</sup> Department of Immunology, OLGEM, Faculty of Medicine and Dentistry, Palacky University Olomouc and University Hospital Olomouc, Hnevotinska 3, 77900 Olomouc, Czech Republic  
Full list of author information is available at the end of the article



© The Author(s) 2021. **Open Access** This article is licensed under a Creative Commons Attribution 4.0 International License, which permits use, sharing, adaptation, distribution and reproduction in any medium or format, as long as you give appropriate credit to the original author(s) and the source, provide a link to the Creative Commons licence, and indicate if changes were made. The images or other third party material in this article are included in the article's Creative Commons licence, unless indicated otherwise in a credit line to the material. If material is not included in the article's Creative Commons licence and your intended use is not permitted by statutory regulation or exceeds the permitted use, you will need to obtain permission directly from the copyright holder. To view a copy of this licence, visit <http://creativecommons.org/licenses/by/4.0/>. The Creative Commons Public Domain Dedication waiver (<http://creativecommons.org/publicdomain/zero/1.0/>) applies to the data made available in this article, unless otherwise stated in a credit line to the data.

with near-cut-off cycle threshold [Ct] values in RT-qPCR) and the identification of variants of concern and their influence on diagnostic settings.

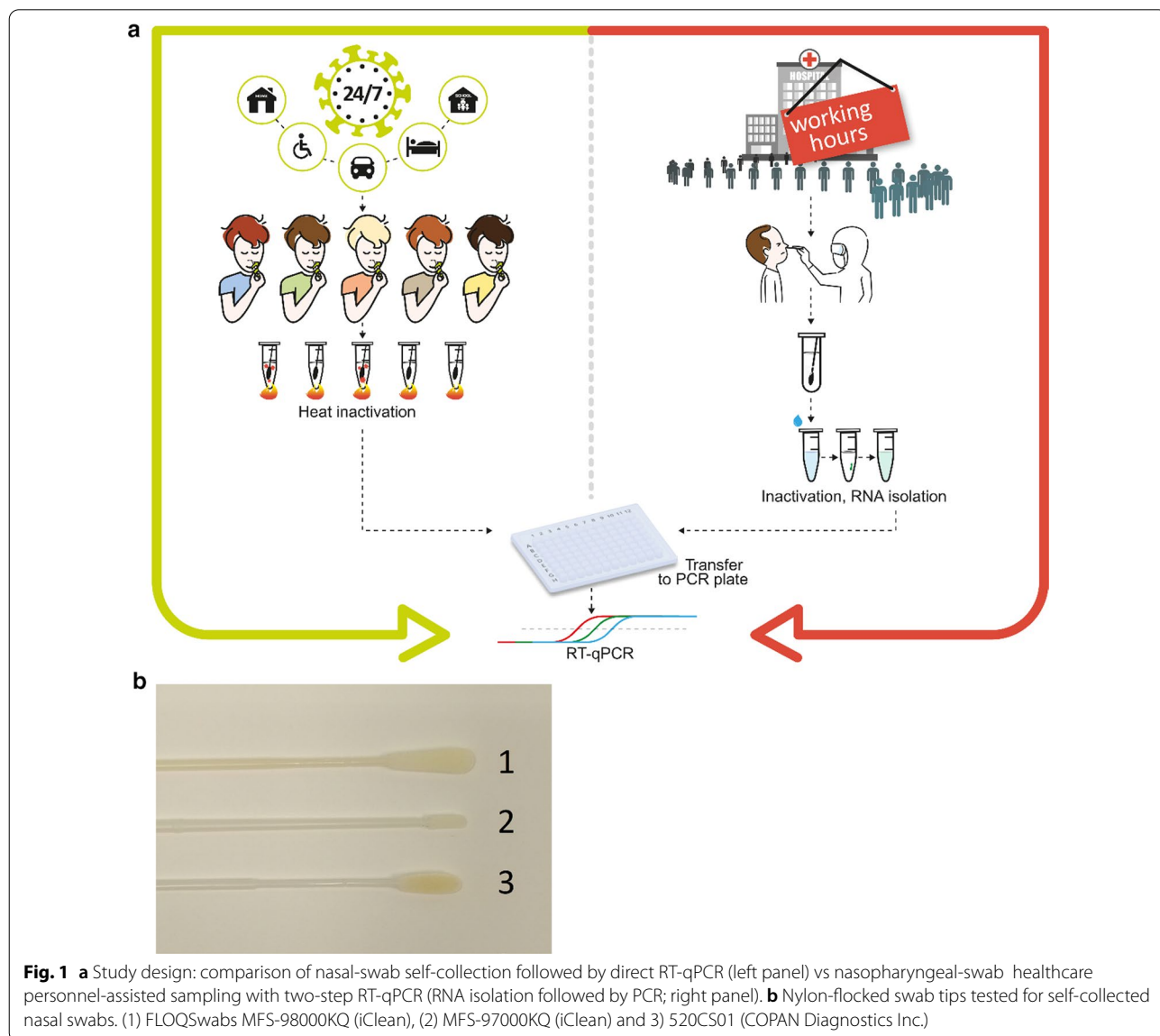
The present study argues for a transition to painless self-collected nasal swabs and direct RT-qPCR to accelerate and streamline COVID-19 diagnostics during the pandemic and in the post-pandemic era. Additionally, RT-qPCR results in the grey zone are discussed, as these subjects may have an ultra-low viral load without inducing a specific immune response.

**Materials and methods**

In this prospective study performed in October and November 2020 at the testing centres of University Hospital Olomouc and Sumperk Hospital, Czechia, 1038

enrolled subjects underwent nasopharyngeal-swab sampling carried out by healthcare personnel, followed by self-collected nasal-swab sampling for SARS-CoV-2 RT-qPCR detection on the same day. All collected swabs were stored at 4 °C and analysed within 24 h of the sampling. The study design is shown in Fig. 1. The subjects signed their informed consent, approved by the Ethical Committee of University Hospital Olomouc, and completed a questionnaire comparing their comfort during both types of sampling.

Two-step RT-qPCR was performed on the nasopharyngeal swabs collected by the healthcare personnel in 2 ml of universal transport media (UTM, COPAN Diagnostics Inc.). Viral RNA isolation was performed on 200 µl of swabs in UTM using an automated nucleic acid magnetic



bead extraction platform, Zymio EXM 3000 (Zymio, Shenzhen, China), and a nucleic acid extraction kit (Zymio). The final elution volume was 50 µl. RT-qPCR was then performed using a Novel Coronavirus (2019-nCoV) Real-Time Multiplex RT-PCR Kit (LifeRiver, Shanghai, China) to target the *ORF1ab*, *E* and *N* genes, according to the manufacturer's recommendations (20 µl Master Mix and 5 µl isolated RNA; 40 cycles) [24]. The detection limit was five copies per reaction.

For the direct RT-qPCR, nasal-swab self-collection was individually performed after instruction and under the supervision of trained personnel using nylon-flocked swab tips (FLOQSwabs MFS-98000KQ, iClean; MFS-97000KQ, iClean; 520CS01, COPAN Diagnostics Inc.) (Fig. 1). Different types of swab tip were used in this study because of the shortages caused by the COVID-19 pandemic, but all were similar in performance, as assessed by the expression of the control *RP* gene. Briefly, mid-turbinate swabbing was performed using a nylon-flocked swab tip inserted ~2.5-cm deep in both nasal cavities for 10 s and gently rotated. Then, the swab was immersed in 0.2 ml of COVID media in a 1.5-ml Eppendorf-type tube (part of the DIOS-RT-qPCR Kit, IABio, Czechia). Before analysis, the swab was heat inactivated at 75 °C for 10 min while being shaken, followed by spin centrifugation. Subsequently, the DIOS-RT-qPCR Kit (IABio) was used to target the *NI/N2/RP* genes (16 µl of Master Mix and 14 µl of inactivated swab eluate in COVID media; 40 cycles) [15]. The detection limit was seven copies per reaction. A comparison of the performance of the DIOS-RT-qPCR Kit, starting with the nasopharyngeal swabs leached in UTM, and classic two-step RT-qPCR on RNA isolated from the swabs had already been conducted, with the majority of samples delivering the same results in terms of positivity/negativity and Ct values in both settings [15]. To minimise the potential of false-negative results, positive (SARS-CoV-2 RNA Control 1, Twist Bioscience, USA) and negative controls (nuclease-free water) were added to each run, the *RP* gene served as an internal control for the amplification and amount of material collected with the swab in each sample. Strict laboratory procedures were established to avoid false positives, including separate laboratory rooms for the RT-qPCR setup and PCR amplification, with special shoes and coats and no transfer of disposables between the two rooms.

The presented Ct data were unnormalised for the amount of starting material. The relationship between the Ct values for both sampling methods was calculated by Pearson's rank correlation using the Analysis ToolPak add-in in Excel. The sensitivity, specificity, positive and negative predictive values and corresponding confidence intervals were calculated using a 2 × 2 table with the help

of an online tool ([https://www.medcalc.org/calc/diagnostic\\_test.php](https://www.medcalc.org/calc/diagnostic_test.php)).

## Results and discussion

The COVID-19 vaccines are promising. However, worldwide vaccination will take months, and the only possible way to control the spread of COVID-19 and normalise daily life is to combine vaccination, preventive measures and effective mass testing to detect infected individuals in the acute phase. The gold standard for SARS-CoV-2 testing is still the classic two-step RT-qPCR with RNA isolation and nasopharyngeal-swab collection by healthcare personnel, as introduced at the beginning of the pandemic. In 2021, we are now facing new testing requirements: the test should be painless and easily accessible, limit the exposure of patients and staff to infection, be capable of recognising an infection with more contagious strains and be followed by fast high-throughput assays to obtain results within two hours while maintaining the desired sensitivity.

To fulfil these new requirements, we tested painless nasal-swab self-collection followed by direct one-step RT-qPCR and nasopharyngeal-swab collection and then by classic two-step RT-qPCR on RNA isolates on a cohort of 1038 subjects. Of these subjects, 297 (28.6%) were found to be positive and 741 (71.4%) negative for SARS-CoV-2 RNA using the classic two-step RT-qPCR with nasopharyngeal swabs. Upon comparing direct RT-qPCR with two-step RT-qPCR, an agreement of 94.8% (both positive and negative) was proven between the protocols. Moreover, 54 samples (5.2%) were found to be positive using only one protocol (48 samples by two-step RT-qPCR and 6 samples by direct RT-qPCR). Of the 54 positive results from only one protocol, 38 samples (70.4%) exhibited very low viral loads within the defined grey zone (Ct 37–40), corresponding to less than five SARS-CoV-2 copies per reaction, which was below the detection limits of the kits used. These results also emphasised the uneven distribution of the virus through the upper respiratory tracts (nasal, nasopharyngeal, left, right) in the case of an ultra-small viral load, in which the virus disappeared within hours or days with no symptoms. In our large real-world cohort, a specificity of 99%, sensitivity of 95%, positive predictive value of 0.99 and negative predictive value of 0.98 were achieved between the direct and two-step protocols in the samples with clear SARS-CoV-2 positivity (Ct < 37) (Table 1).

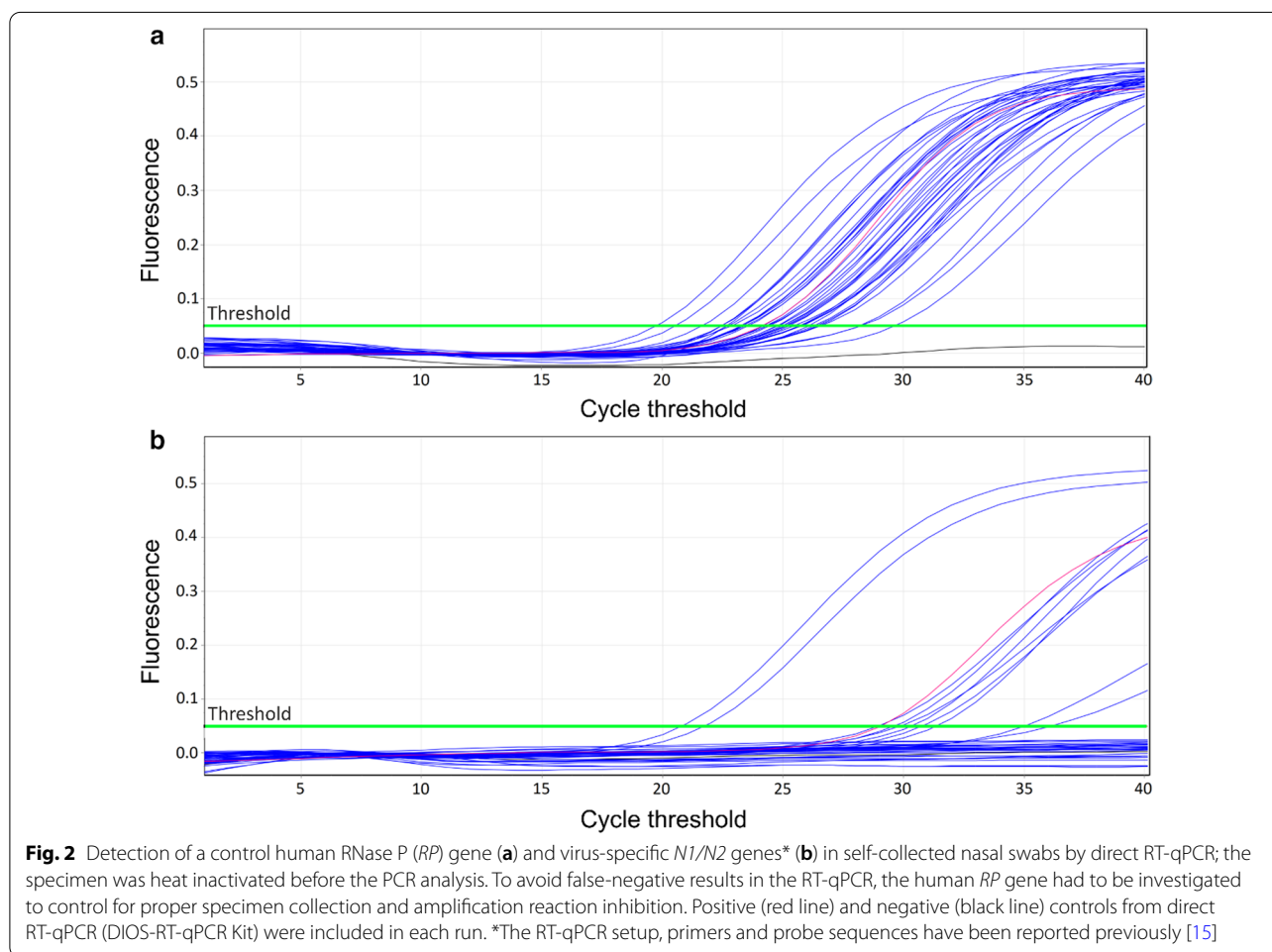
Self-collected swabs in COVID-19 diagnostics and screenings offer significant benefits. They are easy to use and highly acceptable to the public; they limit the exposure of subjects and healthcare personnel to infection and reduce the requirement for personal protective equipment [29], as shown in the diagnostics of other

**Table 1** The sensitivity and specificity of direct RT-qPCR on self-collected nasal swabs in samples with clear SARS-CoV-2 positivity (Ct < 37) detected by two-step RT-qPCR on nasopharyngeal swabs

	Two-step RT-qPCR on nasopharyngeal swabs		
	Positive <sup>#</sup>	Negative	Total
Direct RT-qPCR on nasal swab			
Positive	246	3*	249
Negative	13	776	789
Total	259	779	1038
Sensitivity	94.98% (95% CI 91.57–97.30%)		
Specificity	99.61% (95% CI 98.88–99.92%)		
Positive predictive value (PPV)	98.80% (95% CI 96.36–99.61%)		
Negative predictive value (NPV)	98.73% (95% CI 97.23–99.02%)		

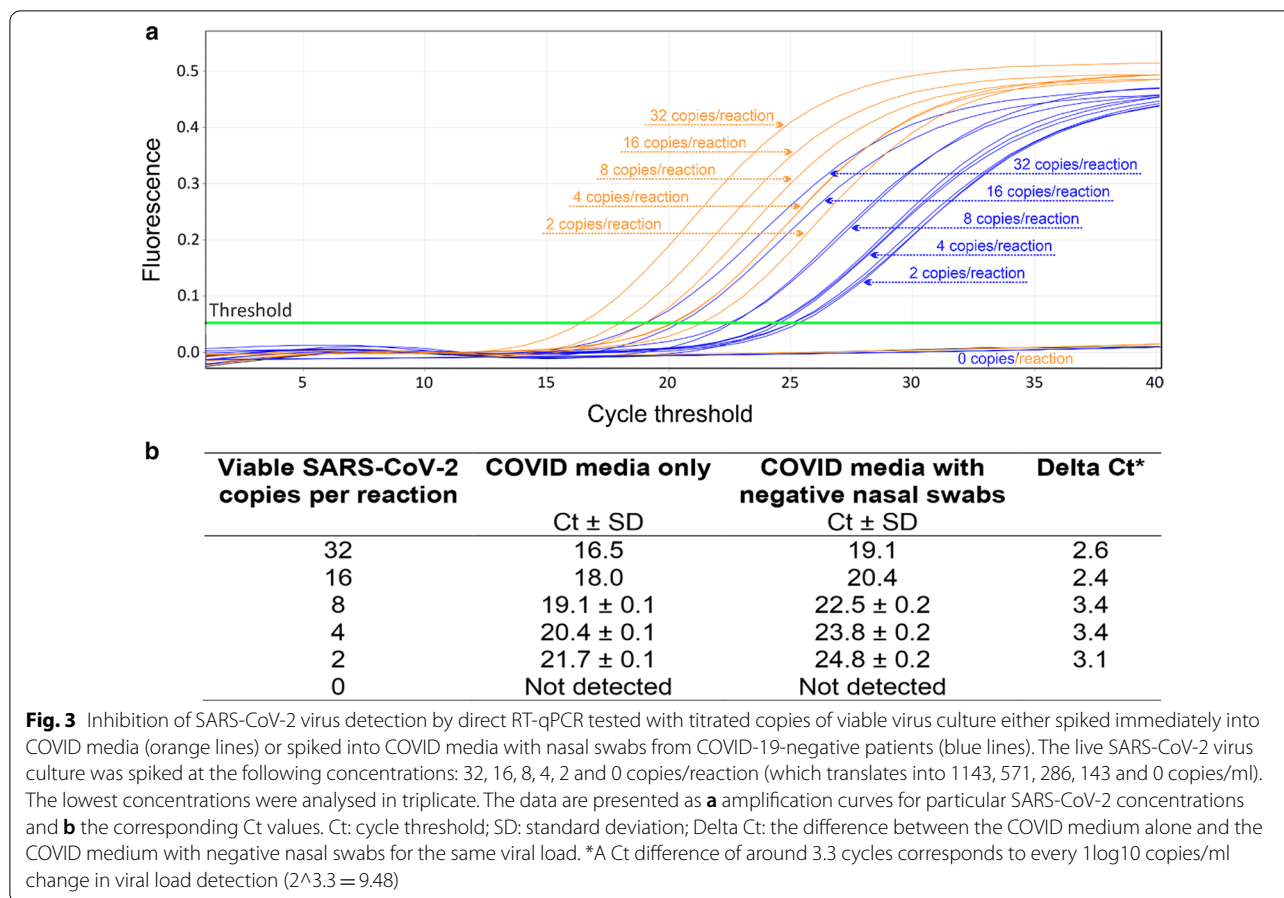
<sup>#</sup> RT-qPCR positivity is defined as having Ct values lower than or equal to 37

\* Direct RT-qPCR positivity for these nasal-swab samples was confirmed by two-step RT-qPCR from RNA isolates



respiratory pathogens [1, 14]. Regarding COVID-19, both nasopharyngeal and nasal swabs are recommended for SARS-CoV-2 RT-qPCR detection [11], and an update on 30 December 2020 added nasal mid-turbinate swabs

as another acceptable method for home or on-site self-collection [5]. There is evidence that nasopharyngeal and nasal swabs have a similar performance in SARS-CoV-2 diagnostics, but nasal sampling is painless, less invasive



and more comfortable [19, 20, 26, 27, 29], based on our questionnaire results, 90% of the subjects noted that the nasal swab was more comfortable, while 10% did not feel any difference between the sampling methods. Another advantage of self-collection is its independence from testing centres and the reduced COVID-19 exposure risk to healthcare personnel. It may enable sampling to be performed 24/7 on a large scale anywhere, e.g. cars, households, companies and schools (Fig. 1), and thus help identify infected subjects before sports and cultural events, festivals, parties, weddings, business meetings, etc. To avoid incorrect sampling and exclude RT-qPCR inhibition, each sample is controlled by the human *RP* control gene during direct RT-qPCR analysis, similar to the two-step RT-qPCR (Fig. 2). As shown in our real-world cohort, the majority (>99%) of enrolled subjects obtained a sample specimen appropriate for SARS-CoV-2 analysis.

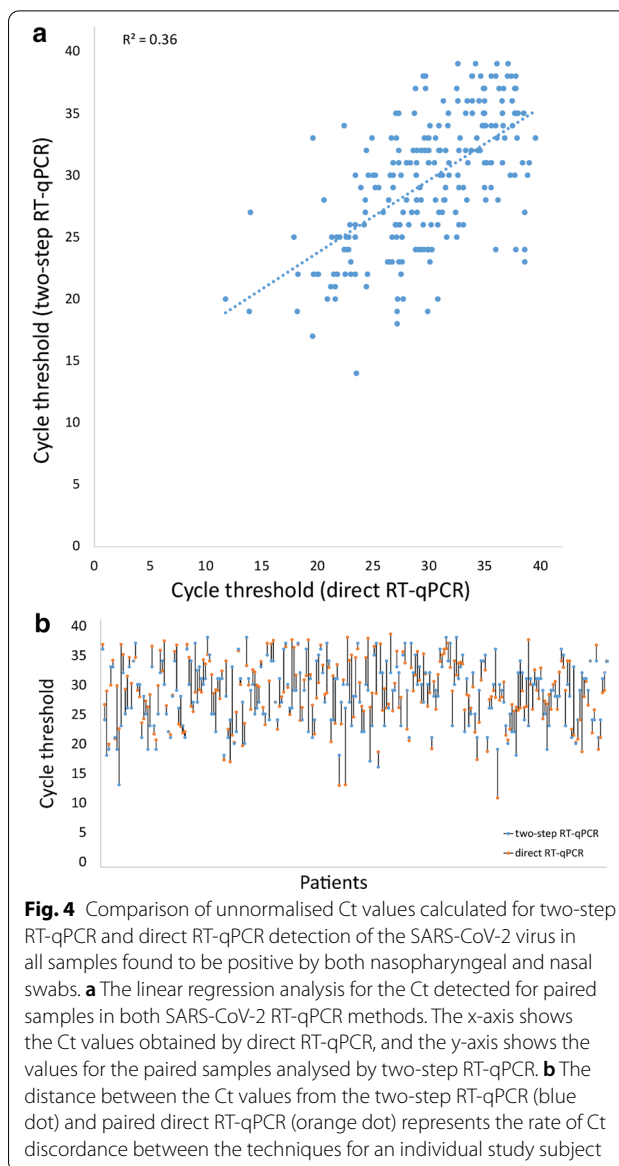
Another important step in the mass-testing setup is choosing the right analysis method. Rapid antigen testing has shown great promise for symptomatic patients; however, the sensitivity in asymptomatic and presymptomatic subjects reaches only ~73% [12]. Asymptomatic

individuals are those who test RT-qPCR positive but experience no COVID-19 symptoms, they occur at a rate of 17–20% [3, 4, 18], with a higher prevalence in younger subjects [2]. Presymptomatic individuals are those who initially present as asymptomatic and develop symptoms days or weeks later [3, 23]. Unrecognised ‘asymptomatics’ and ‘presymptomatics’ might both contribute to a sizeable portion of the transmission events in a community because they are more likely to be a part of the community than ‘symptomatics’, who are isolated [3]. Unfortunately, we did not have the complete clinical data for our cohort of contacts and family members of patients diagnosed with COVID-19. Based on the available follow-up data in approximately a quarter of the positive individuals, we estimated that most of our positive cases were presymptomatic (~80%) and that approximately 20% were asymptomatic subjects (mostly younger individuals aged 18–30 years old). Therefore, mass testing in the post-pandemic era should still be based on RT-qPCR or its combination with antigen testing. For mass RT-qPCR testing, we and others have emphasised the use of direct RT-qPCR on nasopharyngeal swabs because of the minimal handling steps, speed, high throughput and simple



design while maintaining the required sensitivity [13, 15, 16]. This study is the first to validate the use of self-collected nasal swabs for direct RT-qPCR in SARS-CoV-2 testing, demonstrating the required diagnostic accuracy for the detection of infected subjects. To estimate the inhibitory effect of mucosal secretions and epithelia in nasal swabs on direct RT-qPCR performance and sensitivity, we titrated viable SARS-CoV-2 viruses with a known number of copies with swabs from SARS-CoV-2-negative subjects (after thorough wiping of the nasal cavity and insertion of the swabs in COVID medium) and performed RT-qPCR (Fig. 3a). This analysis revealed a ~tenfold inhibition of the direct RT-qPCR reaction compared to the mixing of the titrated virus with COVID medium alone, as calculated from the Ct difference reaching ~3 cycles for the same viral load (Fig. 3b). Nevertheless, due to the low amount of collection medium and large volume of real subject's swabs added to the RT-qPCR reaction mixture, our approach achieved the required sensitivity requested by the FDA [11]. As shown by the scatter plots for the paired SARS-CoV-2-positive samples in Fig. 4a, nasal-swab sampling with direct RT-qPCR correlated with the nasopharyngeal samples across the whole range of Ct values. The lower correlation coefficient may be associated with the analysis of unnormalised Ct values [8] and the diversity of the distribution of the virus on different mucosal surfaces [17]. For better visualisation, Ct values for paired nasopharyngeal and nasal samples in the SARS-CoV-2-positive subjects are shown in Fig. 4b. Importantly, this direct RT-qPCR setup may also be applied to the detection of variants of concern (e.g. SARS-CoV-2 B.1.1.7, B.1.351 and P.1).

While RT-qPCR was introduced for COVID-19 diagnosis in December 2019, the interpretation of the results has not changed since then, and many laboratories report 'positive or negative' results based only on Ct values below 40. In general, however, there is growing evidence that diagnostic tests for 'black or white' decisions often do not reflect the reality of clinical settings; some values may be within the grey zone due to kit sensitivity, uncertainty about the disease status, test reliability or observer, instrumental and biological components of variance [7, 28]. In SARS-CoV-2 diagnostics, we and others have declared the diagnostic grey zone to be within the range of Ct 37–40 and have recommended the re-sampling and subsequent re-testing of samples from clinically affected sites to minimise misclassification errors [28, 30, 31]. Samples with ultra-low viral loads are often repeatedly analysed in laboratories for the final reporting of the results, which slows down the analytical process. In line with these observations, we followed 20 subjects with test results within the defined grey zone (median Ct 38.1, min–max Ct 37.0–39.9) using direct RT-qPCR



on self-collected nasal swabs, all of whom became SARS-CoV-2 negative within two days in subsequent direct RT-qPCR tests (Ct > 40). Additionally, according to information given by the infected subjects, their close contacts did not become infected within the subsequent 14 days. This may suggest that the ultra-low viral loads in reported cases are effectively removed by innate immune mechanisms, thus preventing virus amplification and acute infection, with the viral antigen load below the threshold for recognition by specific immunity [6, 10]. Therefore, future research should address the association of ultra-low SARS-CoV-2 loads with infectivity, specific immunity and, particularly, the induction of neutralising antibodies. Based on the above arguments,

**Table 2** Results of WHO EQA specimens obtained by direct RT-qPCR and classic RT-qPCR approaches during WHO (2020) EQA Testing Program for the Detection of SARS-CoV-2 by PCR in February 2021

WHO EQA specimens ID	Direct-RT-qPCR result			Two-step RT-qPCR result		
	SARS-CoV-2 result	N1/N2 (Ct value)	SARS-CoV-2 result	N gene (Ct value)	E gene (Ct value)	ORF1ab (Ct value)
WHO-SC-20-01	Positive	27.7	Positive	30.5	30.1	29.2
WHO-SC-20-02	Positive	23.1	Positive	25.8	25.3	24.1
WHO-SC-20-03	Negative	ND	Negative	ND	ND	ND
WHO-SC-20-04	Negative	ND	Negative	ND	ND	ND
WHO-SC-20-05	Positive	32.3	Positive	34.0	34.6	32.5

Direct RT-qPCR was performed by heat lysed swab specimen using DIOS-RT-qPCR Kit (IABio, Czechia) and two-step RT-qPCR using Novel Coronavirus (2019-nCoV) Real-Time Multiplex RT-PCR Kit (LifeRiver, Shanghai, China) using extracted RNA from swab specimen

ND not detected

semiquantitative results relative to viral load (high, middle and low viral load, borderline within the grey zone) instead of only qualitative RT-qPCR test results (positive × negative) would better assist clinicians in risk-stratifying patients and their contacts and choosing more appropriate quarantine conditions [9] and, eventually, more appropriate therapies [21, 32].

This study has several limitations, especially in relation to the specific conditions of COVID-19 RT-qPCR testing. Worldwide, hundreds of thousands of measurements, primarily following WHO guidelines [30, 31], are performed daily in approved diagnostic laboratories with different FDA- and CE-IVD–approved kits and/or home-based methods based on different gene sets, detection limits and instruments and using different disposables due to the shortages caused by the pandemic. Regarding the data, results are required within 48 h after sampling and are reported only qualitatively (negative/positive). The Ct values recorded internally in diagnostic laboratories are not normalised for sampling variability, and the dispersion of the data reaches up to four log units (10,000-fold). The Ct values differ for used instruments and different targets and primer/probe designs [8], which makes it difficult to perform a statistical analysis on the data obtained and compare different approaches. When comparing diagnostic kits and approaches, the only measure of quality in SARS-CoV-2 RT-qPCR diagnostics is a correct quality result in external quality control runs and the detection limit of 20 copies of SARS-CoV-2 per reaction given by the FDA [11]. In this regard, both kits used in this study met FDA requirements for the detection limit and gave the same results in terms of positivity/negativity in the external quality control runs (for a comparison of Ct values in the WHO (2020) Testing Program for the Detection of SARS-CoV-2 by PCR, see Table 2). Our study demonstrated that painless self-collection followed by direct RT-qPCR represent an excellent option

for mass testing during the SARS-CoV-2 pandemic as well as for the post-pandemic era. Further enhancement of testing capacity and lowering the price per one tested subject may be achieved by the RT-qPCR pooling method followed by the re-testing of positive individual samples [33].

## Conclusion

This is the first large-scale validation study on the use of painless nasal-swab self-collection in conjunction with direct RT-qPCR, proving the diagnostic utility of this approach for mass SARS-CoV-2 testing. This fast, inexpensive and easy SARS-CoV-2 testing method could significantly increase the capacity of the test programmes needed to control the spread of COVID-19 during the pandemic and in the post-pandemic era.

## Abbreviations

COVID-19: Coronavirus disease 2019; Ct: Cycle threshold; PCR: Polymerase chain reaction; RNA: Ribonucleic acid; RT-qPCR: Reverse transcription quantitative real-time PCR; SARS-CoV2: Severe acute respiratory syndrome coronavirus 2; SD: Standard deviation.

## Acknowledgements

The authors thank Petr Bednar for titration of viable SARS-CoV-2 viruses and Jakub Savara for help with preparation of figures.

## Authors' contributions

Conceptualization, EK; Methodology, EK, RF and MR; Formal Analysis, EK, RF; Investigation, RF, PSa, JM, MD, OJ and PSt; Resources, MK; Writing—Original Draft Preparation, EK; Writing—Review & Editing, RF, MR, PK; Supervision, EK; Funding Acquisition, EK, PK. All authors read and approved the final manuscript.

## Funding

This work was supported by a grant from the Ministry of Health of the Czech Republic (FNOL, 00098892) and Internal Grant Agency of Palacky University (IGA\_LF\_2021\_15). PS was supported by the Veterinary Research Institute (RVO: RO 0518) and the Czech Ministry of Education, Youth and Sports (CZ.02.1.01/0.0/0.0/15\_003/0000495).

**Availability of data and materials**

The data of this study are available from the corresponding author on reasonable request.

**Declarations****Ethics approval and consent to participate**

This study was approved by the Ethical Committee of the University Hospital and Palacký University Olomouc. All enrolled subjects provided written, informed consent for the use of sampled specimens for the purpose of this study, in accordance with the Declaration of Helsinki.

**Consent for publication**

All authors consent to the publication of the manuscript.

**Competing interests**

E.K., R.F., M.R., P.Sa., J.M., M.D., O.J., P.St., M.K. have no conflict of interest, P.K. is member of the board of directors of a company Institute of Applied Biotechnologies a.s. The funders and the company had no role in the design, execution, interpretation, or writing of the study.

**Author details**

<sup>1</sup>Department of Immunology, OLGEM, Faculty of Medicine and Dentistry, Palacký University Olomouc and University Hospital Olomouc, Hnevotinska 3, 77900 Olomouc, Czech Republic. <sup>2</sup>Department of Microbiology, Faculty of Medicine and Dentistry, Palacký University Olomouc and University Hospital Olomouc, Olomouc, Czech Republic. <sup>3</sup>Hospital Šumperk, Šumperk, Czech Republic. <sup>4</sup>Veterinary Research Institute, Brno, Czech Republic. <sup>5</sup>Institute of Applied Biotechnologies a.s., Prague, Czech Republic.

Received: 9 February 2021 Accepted: 29 April 2021

Published online: 04 May 2021

**References**

- Akmatov MK, Gatzemeier A, Schughart K, Pessler F. Equivalence of self- and staff-collected nasal swabs for the detection of viral respiratory pathogens. *PLoS ONE*. 2012;7:e48508. <https://doi.org/10.1371/journal.pone.0048508>.
- Al-Rifai RH, Acuna J, Al Hossany FI, Aden B, Al Memari SA, Al Mazrouei SK, Ahmed LA. Epidemiological characterization of symptomatic and asymptomatic COVID-19 cases and positivity in subsequent RT-PCR tests in the United Arab Emirates. *PLoS ONE*. 2021;16:e0246903. <https://doi.org/10.1371/journal.pone.0246903>.
- Buitrago-García D, Egli-Gany D, Counotte MJ, Hossmann S, Imeri H, Ipekci AM, Salanti G, Low N. Occurrence and transmission potential of asymptomatic and presymptomatic SARS-CoV-2 infections: a living systematic review and meta-analysis. *PLoS Med*. 2020;17:e1003346. <https://doi.org/10.1371/journal.pmed.1003346>.
- Byambasuren O, Cardona M, Bell K, Clark J, McLaws M-L, Glasziou P. Estimating the extent of asymptomatic COVID-19 and its potential for community transmission: systematic review and meta-analysis. *J Assoc Med Microbiol Infect Dis Canada*. 2020;5:223–34. <https://doi.org/10.3138/jammi-2020-0030>.
- CDC, 2020. Interim guidelines for collecting, handling, and testing clinical specimens for COVID-19. <https://www.cdc.gov/coronavirus/2019-ncov/lab/guidelines-clinical-specimens.html>. Accessed on 16 March 2021.
- Chowdhury MA, Hossain N, Kashem MA, Shahid MA, Alam A. Immune response in COVID-19: a review. *J Infect Public Health*. 2020;13:1619–29. <https://doi.org/10.1016/j.jiph.2020.07.001>.
- Coste J, Pouchot J. A grey zone for quantitative diagnostic and screening tests. *Int J Epidemiol*. 2003;32:304–13. <https://doi.org/10.1093/ije/dyg054>.
- Dahdouh E, Lázaro-Perona F, Romero-Gómez MP, Mingorance J, García-Rodríguez J. Ct values from SARS-CoV-2 diagnostic PCR assays should not be used as direct estimates of viral load. *J Infect*. 2020. <https://doi.org/10.1016/j.jinf.2020.10.017>.
- Dang Y, Liu N, Tan C, Feng Y, Yuan X, Fan D, Peng Y, Jin R, Guo Y, Lou J. Comparison of qualitative and quantitative analyses of COVID-19 clinical samples. *Clin Chim Acta*. 2020;510:613–6. <https://doi.org/10.1016/j.cca.2020.08.033>.
- Dogra P, Ruiz-Ramírez J, Sinha K, Butner JD, Peláez MJ, Rawat M, Yellepeddi VK, Pasqualini R, Arap W, Sostman HD, Cristini V, Wang Z. Innate immunity plays a key role in controlling viral load in COVID-19: mechanistic insights from a whole-body infection dynamics model. Version 2. *medRxiv*. 2020. <https://doi.org/10.1101/2020.10.30.20215335>.
- FDA U.S., 2020. Policy for coronavirus disease-2019 tests during the public health emergency (Revised). Immediately in Effect Guidance for Clinical Laboratories, Commercial Manufacturers, and Food and Drug Administration Staff. <https://www.fda.gov/media/135659/download>. Accessed 16 March 2021.
- Fitzpatrick MC, Pandey A, Wells CR, Sah P, Galvani AP. Buyer beware: inflated claims of sensitivity for rapid COVID-19 tests. *Lancet*. 2021;397:24–5. [https://doi.org/10.1016/S0140-6736\(20\)32635-0](https://doi.org/10.1016/S0140-6736(20)32635-0).
- Hasan MR, Mirza F, Al-Hail H, Sundararaju S, Xaba T, Iqbal M, Alhussain H, Yassine HM, Perez-Lopez A, Tang P. Detection of SARS-CoV-2 RNA by direct RT-qPCR on nasopharyngeal specimens without extraction of viral RNA. *PLoS ONE*. 2020;15:e0236564. <https://doi.org/10.1371/journal.pone.0236564>.
- Jackson ML, Nguyen M, Kirilin B, Madziwa L. Self-collected nasal swabs for respiratory virus surveillance. *Open Forum Infect Dis*. 2015. <https://doi.org/10.1093/ofid/ofv152>.
- Kriegova E, Fillerova R, Kvapil P. Direct-RT-qPCR detection of SARS-CoV-2 without RNA extraction as part of a COVID-19 testing strategy: from sample to result in one hour. *Diagnostics (Basel)*. 2020;10:605. <https://doi.org/10.3390/diagnostics10080605>.
- Lübke N, Senff T, Scherger S, Hauka S, Andrée M, Adams O, Timm J, Walker A. Extraction-free SARS-CoV-2 detection by rapid RT-qPCR universal for all primary respiratory materials. *J Clin Virol*. 2020;130:104579. <https://doi.org/10.1016/j.jcv.2020.104579>.
- Madas BG, Fúri P, Farkas Á, Nagy A, Czitivroszky A, Balásházy I, Schay GG, Horváth A. Deposition distribution of the new coronavirus (SARS-CoV-2) in the human airways upon exposure to cough-generated droplets and aerosol particles. *Sci Rep*. 2020;10:22430. <https://doi.org/10.1038/s41598-020-79985-6>.
- Meyerowitz EA, Richterman A, Bogoch II, Low N, Cevik M. Towards an accurate and systematic characterisation of persistently asymptomatic infection with SARS-CoV-2. *Lancet Infect Dis*. 2020;S1473-3099(20)30837-9. [https://doi.org/10.1016/S1473-3099\(20\)30837-9](https://doi.org/10.1016/S1473-3099(20)30837-9).
- Péré H, Podglajen I, Wack M, Flamarion E, Mirault T, Goudot G, Hauw-Berlemont C, Le L, Caudron E, Carrabin S, Rodary J, Ribeyre T, Bélec L, Veyer D. Nasal swab sampling for SARS-CoV-2: a convenient alternative in times of nasopharyngeal swab shortage. *J Clin Microbiol*. 2020;58:e00721-e1720. <https://doi.org/10.1128/JCM.00721-20>.
- Pinninti S, Trieu C, Pati SK, Latting M, Cooper J, Seleme MC, Boppana S, Arora N, Britt WJ, Boppana SB. Comparing nasopharyngeal and mid-turbinate nasal swab testing for the identification of severe acute respiratory syndrome coronavirus 2. *Clin Infect Dis*. 2020. <https://doi.org/10.1093/cid/ciaa882>.
- Pujadas E, Chaudhry F, McBride R, Richter F, Zhao S, Wajnberg A, Nadkarni G, Glicksberg BS, Houldsworth J, Cordon-Cardo C. SARS-CoV-2 viral load predicts COVID-19 mortality. *Lancet Respir Med*. 2020;8:e70. [https://doi.org/10.1016/S2213-2600\(20\)30354-4](https://doi.org/10.1016/S2213-2600(20)30354-4).
- Russo A, Minichini C, Starace M, Astorri R, Calò F, Coppola N, Coppola N. On behalf of the Vanvitelli COVID-19 group: current status of laboratory diagnosis for COVID-19: a narrative review. *Infect Drug Resist*. 2020;13:2657–65. <https://doi.org/10.2147/IDR.S264020>.
- Savvides C, Siegel R. Asymptomatic and presymptomatic transmission of SARS-CoV-2: a systematic review. *medRxiv*. 2020. <https://doi.org/10.1101/2020.06.11.20129072>.
- Shanghai ZJ Bio-Tech Co., Ltd, 2020. Liferiver, novel coronavirus (2019-nCoV) real time multiplex RT-PCR Kit (detection for 3 genes) instructions for use. <https://www.mobitec.com/media/datasheets/liferiverbio-tech/RR-0479-02-ZJ.pdf>. Accessed 16 March 2021.
- Smyrlaki I, Ekman M, Lentini A, Rufino de Sousa N, Papanicolaou N, Vondracek M, Aarum J, Safari H, Muradrasoli S, Rothfuchs AG, Albert J, Högberg B, Reinius B. Massive and rapid COVID-19 testing is feasible by extraction-free SARS-CoV-2 RT-PCR. *Nat Commun*. 2020;11:4812. <https://doi.org/10.1038/s41467-020-18611-5>.



26. Tu Y-P, Jennings R, Hart B, Cangelosi GA, Wood RC, Wehber K, Verma P, Vojta D, Berke EM. Swabs collected by patients or health care workers for SARS-CoV-2 testing. *N Engl J Med*. 2020;383:494–6. <https://doi.org/10.1056/NEJMc2016321>.
27. Vlek ALM, Wesselijs TS, Achterberg R, Thijsen SFT. Combined throat/nasal swab sampling for SARS-CoV-2 is equivalent to nasopharyngeal sampling. *Eur J Clin Microbiol Infect Dis*. 2021;40:193–5. <https://doi.org/10.1007/s10096-020-03972-y>.
28. Wang J, Cai K, Zhang R, He X, Shen X, Liu J, Xu J, Qiu F, Lei W, Wang J, Li X, Gao Y, Jiang Y, Xu W, Ma X. Novel one-step single-tube nested quantitative real-time PCR assay for highly sensitive detection of SARS-CoV-2. *Anal Chem*. 2020;92:9399–404. <https://doi.org/10.1021/acs.analchem.0c01884>.
29. Wehrhahn MC, Robson J, Brown S, Bursle E, Byrne S, New D, Chong S, Newcombe JP, Siversten T, Hadlow N. Self-collection: an appropriate alternative during the SARS-CoV-2 pandemic. *J Clin Virol*. 2020;128:104417. <https://doi.org/10.1016/j.jcv.2020.104417>.
30. WHO, 2020. COVID-19 coronavirus real time PCR Kit. [https://www.who.int/diagnostics\\_laboratory/eual/eul\\_0515\\_202\\_00\\_covid19\\_coronavirus\\_real\\_time\\_pcr\\_kit\\_ifu.pdf?ua=1](https://www.who.int/diagnostics_laboratory/eual/eul_0515_202_00_covid19_coronavirus_real_time_pcr_kit_ifu.pdf?ua=1). Accessed on 16 March 2021.
31. WHO, 2020. WHO Emergency Use Assessment Coronavirus disease (COVID-19) IVDs PUBLIC REPORT. [https://extranet.who.int/pqweb/sites/default/files/documents/200728\\_final\\_pqpr\\_eul\\_0515\\_202\\_00\\_covid19\\_real\\_time\\_pcr\\_kit%20%281%29.pdf](https://extranet.who.int/pqweb/sites/default/files/documents/200728_final_pqpr_eul_0515_202_00_covid19_real_time_pcr_kit%20%281%29.pdf). Accessed 16 March 2021.
32. Yu F, Yan L, Wang N, Yang S, Wang L, Tang Y, Gao G, Wang S, Ma C, Xie R, Wang F, Tan C, Zhu L, Guo Y, Zhang F. Quantitative detection and viral load analysis of SARS-CoV-2 in infected patients. *Clin Infect Dis*. 2020;71:793–8. <https://doi.org/10.1093/cid/ciaa345>.
33. Sawicki R, Korona-Glowniak I, Boguszezewska A, Stec A, Polz-Dacewicz M. Sample pooling as a strategy for community monitoring for SARS-CoV-2. *Sci Rep*. 2021;11:3122. <https://doi.org/10.1038/s41598-021-82765-5>.

### Publisher's Note

Springer Nature remains neutral with regard to jurisdictional claims in published maps and institutional affiliations.

Ready to submit your research? Choose BMC and benefit from:

- fast, convenient online submission
- thorough peer review by experienced researchers in your field
- rapid publication on acceptance
- support for research data, including large and complex data types
- gold Open Access which fosters wider collaboration and increased citations
- maximum visibility for your research: over 100M website views per year

At BMC, research is always in progress.

Learn more [biomedcentral.com/submissions](https://biomedcentral.com/submissions)

