


RESEARCH

Open Access



Influence of three BALB/c substrain backgrounds on the skin tumor induction efficacy to DMBA and TPA cotreatment

Mi Ju Kang^{1†}, Jeong Eun Gong^{1†}, Ji Eun Kim¹, Hyeon Jun Choi¹, Su Ji Bae¹, Yun Ju Choi¹, Su Jin Lee¹, Min-Soo Seo², Kil Soo Kim^{2,3}, Young-Suk Jung⁴, Joon-Yong Cho⁵, Yong Lim⁶ and Dae Youn Hwang^{1*} 

Abstract

Differences in responsiveness of BALB/c substrains have been investigated in various fields, including diabetes induction, corpus callosum deficiency, virus-induced demyelinating disease, aggressive behavior and osteonecrosis. However, induction efficacy of skin tumor remains untried. We therefore investigated the influence of BALB/c substrain backgrounds on the skin tumor induction efficacy in response to DMBA (7,12-Dimethylbenz[*a*]anthracene) and TPA (12-O-tetradecanoylphorbol-13-acetate) cotreatment. Alterations in the levels of tumor growth related factors, histopathological structure, and the expression to tumor related proteins were measured in three BALB/c substrains (BALB/cKorl, BALB/cA and BALB/cB) after exposure to DMBA (25 µg/kg) and three different doses of TPA (2, 4 and 8 µg/kg). The average number and induction efficacy of tumors in response to DMBA+TPA treatment were significantly greater in the BALB/cKorl substrain than in BALB/cA and BALB/cB. However, cotreatment with DMBA+TPA induced similar responses for body and organ weights of all three substrains. Few differences were detected in the serum analyzing factors, while similar responsiveness was observed for blood analyzing factors after DMBA+TPA treatment. Furthermore, the three BALB/c substrains exhibited similar patterns in their histopathological structure in DMBA+TPA-induced tumors. The expression levels of apoptotic proteins and tumor related proteins were constantly maintained in all three BALB/c substrains treated with DMBA+TPA. In addition, the responsiveness to cisplatin treatment was overall very similar in the three BALB/c substrains with DMBA+TPA-induced tumors. Taken together, these results indicate that genetic background of the three BALB/c substrains does not have a major effect on the DMBA+TPA-induced skin carcinogenesis and therapeutic responsiveness of cisplatin, except induction efficacy.

Keywords: BALB/c, BALB/cKorl, Substrains, DMBA+TPA, Cisplatin, Skin tumor

* Correspondence: dyhwang@pusan.ac.kr

[†]Mi Ju Kang and Jeong Eun Gong contributed equally to this work.

¹Department of Biomaterials Science, College of Natural Resources and Life Science/Life and Industry Convergence Research Institute/Laboratory Animals Resources Center, Pusan National University, Miryang, South Korea
Full list of author information is available at the end of the article



© The Author(s). 2020 **Open Access** This article is licensed under a Creative Commons Attribution 4.0 International License, which permits use, sharing, adaptation, distribution and reproduction in any medium or format, as long as you give appropriate credit to the original author(s) and the source, provide a link to the Creative Commons licence, and indicate if changes were made. The images or other third party material in this article are included in the article's Creative Commons licence, unless indicated otherwise in a credit line to the material. If material is not included in the article's Creative Commons licence and your intended use is not permitted by statutory regulation or exceeds the permitted use, you will need to obtain permission directly from the copyright holder. To view a copy of this licence, visit <http://creativecommons.org/licenses/by/4.0/>. The Creative Commons Public Domain Dedication waiver (<http://creativecommons.org/publicdomain/zero/1.0/>) applies to the data made available in this article, unless otherwise stated in a credit line to the data.

Introduction

BALB/c mice are amongst the most widely used inbred strains in cancer and immunology studies [1]. These mice are derived from the Bagg albino strain provided by Halsey J. Bagg of the Memorial Hospital (NY, USA), which was obtained from a mouse dealer in Ohio in 1913. In 1935, the animals were transferred with George Davis Snell to The Jackson Laboratory and established as the stable BALB/cJ strain [2, 3]. Thereafter, in 1935, the highly reproductive and less aggressive BALB/cByJ mice were separated from the BALB/cJ strain. A third substrain (BALB/c AnNCrI) was separated from BALB/c and BALB/cByJ mice between the fifties to seventies. These three substrains have divergent genetic and behavioral differences and reproducibility [4]. Based on above phylogenetic trees, the correlation between genetic differences and aggressive behavior of BALB/c mice has received great attention from researches [2, 4].

Influences of BALB/c substrain characteristics were evaluated in various phenotypical responsiveness. Different phenotypes of BALB/cJ and BALB/cByJ mice are involved in the genetic and environmental control of diabetes induced by multi-dose streptozotocine [5]. A variation in the deficiency of the corpus callosum was observed in 13 separated lines established by full-sib inbreeding BALB/c mice, while a spontaneous change occurred only in the BALB/cWah 1 line after 7 generation of inbreeding [6]. Susceptibility to Theiler's murine encephalomyelitis virus (TMEV)-induced demyelinating disease analyzed in BALB/c substrains revealed that the BALB/cJ and BALB/cAnNCr mice were susceptible, whereas the BALB/cByJ and BALB/cCum strains were observed to be resistant [7]. Furthermore, significant differences were determined for aggressive behaviors identified in the BALB/cJ, BALB/cByJ and BALB/cAnNCr substrains [2, 4]. BALB/cJ mice were more susceptible to dexamethasone-induced osteonecrosis compared to BALB/cAnNHsd mice [8]. However, no studies provide any scientific evidence for differences in BALB/c substrains with respect to skin tumor induction efficacy of DMBA+TPA, and the therapeutic responsiveness of cisplatin.

In order to investigate the influence of BALB/c substrain backgrounds on two-stage skin carcinogenesis, this study therefore compared the skin tumor induction efficacy in the DMBA+TPA model, as well as evaluated anti-tumor effects in the DMBA+TPA model treated with cisplatin, by assessing the effects in BALB/cKorI stock and two commercial stocks (BALB/cA and BALB/cB).

Materials and methods

Care and management of animals

All animal protocols used in this study were reviewed and approved by the Pusan National University-Institutional Animal Care and Use Committee (PNU-

IACUC, approval number PNU-2018-1955). Female BALB/c (7-weeks-old) were obtained from three different sources. The BALB/cKorI mice were kindly provided by the Department of Laboratory Animal Resources of the National Institute of Food and Drug Safety Evaluation (NIFDS, Chungju, Korea). The other two strains (BALB/cA and BALB/cB) were purchased from vendors located in the United States (Vendor A) and Japan (Vendor B), respectively. All BALB/c mice were maintained and treated at the Laboratory Animal Resource Center of Pusan National University, which is certified by the Korea Food and Drug Administration (KFDA, Accredited Unit Number 000231), and Association for Assessment and Accreditation of Laboratory Animal Care (AAALAC) International (Accredited Unit Number; 001525). During the entire experimental period, all mice were maintained in a specific pathogen-free (SPF) state under a strict light cycle (lights on at 08:00 h and off at 20:00 h), at $23 \pm 2^\circ\text{C}$ and $50 \pm 10\%$ relative humidity. Animals were provided with *ad libitum* access to a standard irradiated chow diet (Samtako BioKorea Inc., Osan, Korea).

Design of animal experiment

BALB/c mice of each substrain ($n = 48$, 9-weeks-old) were assigned to one of the three groups: No treated group ($n = 8$), Vehicle treated group ($n = 8$) or DMBA treated groups ($n = 32$). On day 1, all mice in the DMBA treated group were shaved, followed by a single topical application of DMBA (Sigma-Aldrich Co., St. Louis, MO, USA; $25 \mu\text{g}$ in 200 ml acetone), whereas mice in the Vehicle group were treated with only acetone solution. Following administration of DMBA, the treated mice were further classified into four groups: DMBA+Low dose TPA treated group (DMBA+LoT treated group, $n = 8$), DMBA+Medium dose TPA treated group (DMBA+MiT treated group, $n = 8$), DMBA+High dose TPA treated group (DMBA+HiT treated group, $n = 8$), and DMBA+Medium dose TPA + Cisplatin treated group (DMBA+MiT + C treated group, $n = 8$). The DMBA+LoT, DMBA+MiT and DMBA+HiT groups received twice weekly topical applications of three different doses (2, 4 and $8 \mu\text{g}/\text{kg}$, respectively) of TPA (Sigma-Aldrich Co.; 200 ml of 10^{-4} M solution in acetone) for 22 weeks (Fig. 1a). The DMBA+MiT + C treated group was treated the same as the DMBA+MiT treated group, with an additional intraperitoneal injection of cisplatin (Sigma-Aldrich Co., 1 mg/kg), every 2 days for the last 2 weeks. After the final treatment, all animals were sacrificed using CO_2 gas. Blood, tumor and tissue samples were subsequently collected and stored in Eppendorf tubes at -70°C until further assays.

Measurement of tumor number and incidence

After measuring the tumor width on the back skin of mice using external calipers (Matusutoyo, Tokyo, Japan),

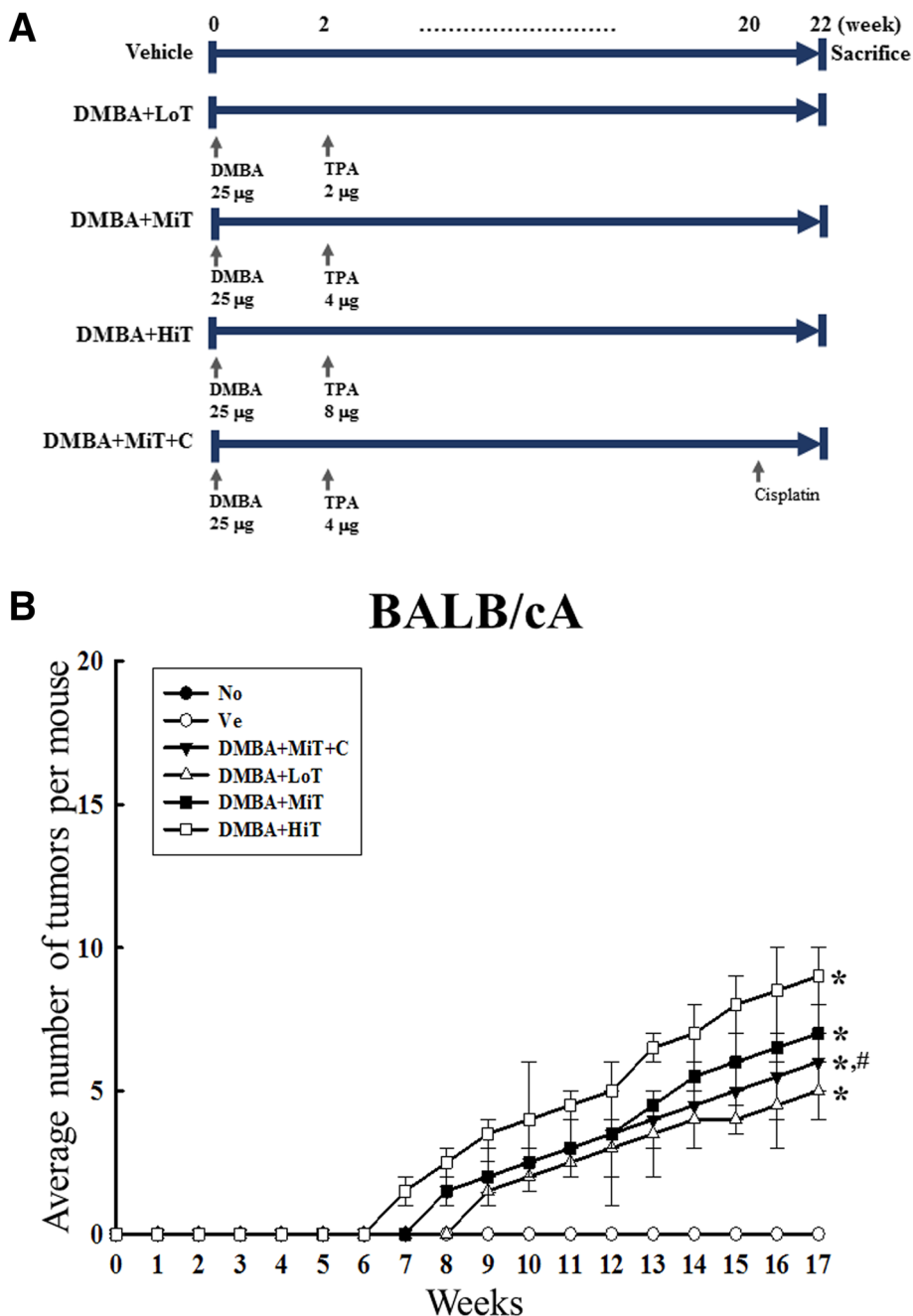


Fig. 1 Experimental scheme and average tumor number in the three BALB/c substrains. **a** After applying single dose DMBA, three different doses of TPA were applied to the shaved back skin, twice weekly for 20 weeks. Also, one group of BALB/c mice was administered DMBA and medium dose TPA, with subsequent intraperitoneal injection of cisplatin as anti-tumor drug. **b** Average number of tumors. Only papilloma with tumor size 2 cm or more were counted, and are represented in the graph. Data represent the mean ± SD. *, *p* < 0.05 compared to the No treated group. #, *p* < 0.05 compared to the Vehicle treated group

the number of tumors having diameter more than 2 cm was counted. The average number of tumors per mice was calculated based on the total number of tumors obtained. Moreover, tumor incidence was calculated using the following formula:

$$\text{Tumor incidence (\%)} = A/B \times 100$$

where A is the number of animals with tumor, and B is the total number of experimental animals in each group.

Measurement of body and organ weights

Throughout the experimental period, body weights of mice in all subset groups were measured daily at 10:00 am using an electronic balance (Mettler Toledo, Greifensee, Switzerland), according to the KFDA guidelines. In addition, the weights of five organs harvested (liver, lung, kidney, thymus and spleen) from the sacrificed BALB/c mice were determined using the same method employed to measure body weight.

Whole blood and serum analysis

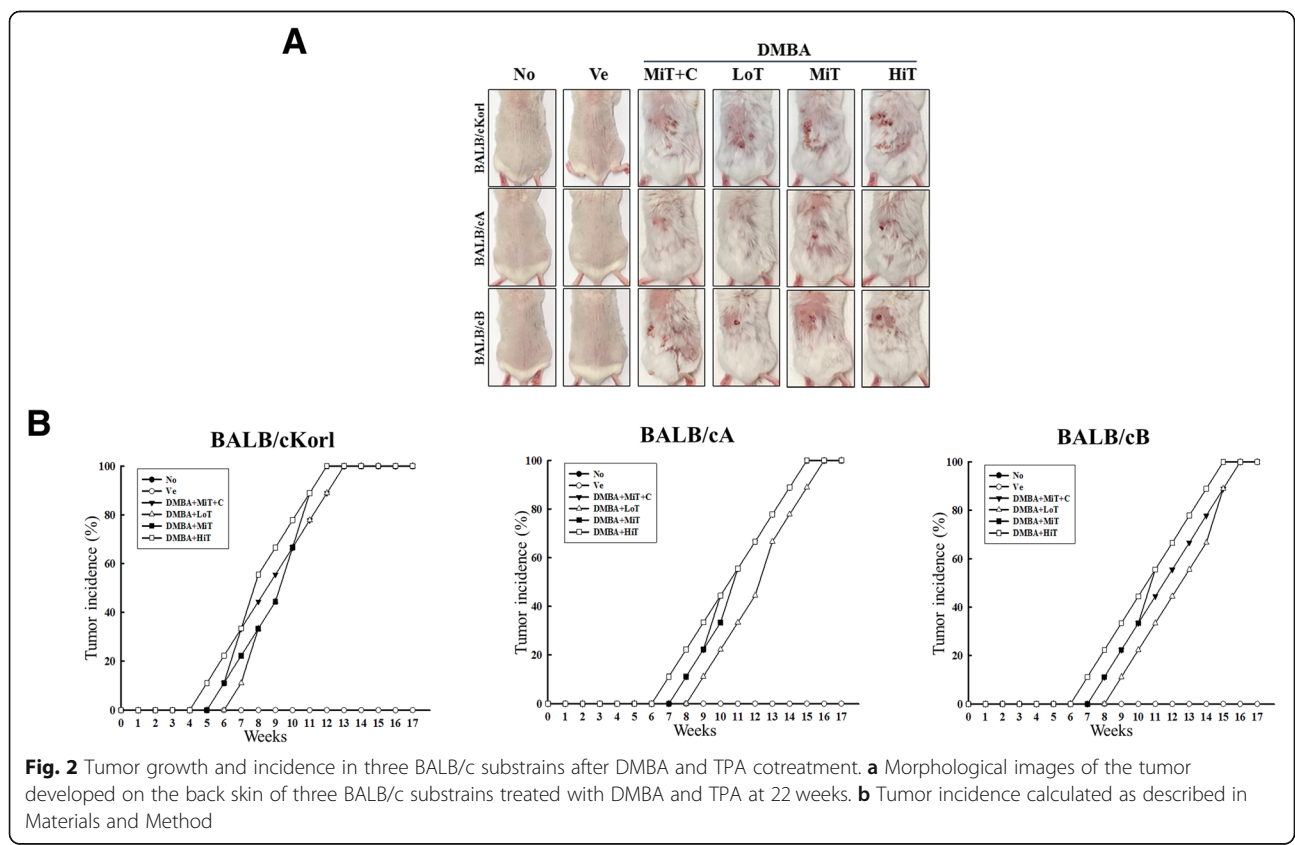
After 22 weeks of the experimental process, all mice were fasted for 8 h, following which anesthesia was induced by intraperitoneal injection of Alfaxan (JUROY Pty Limited, Rutherford, Australia, 13 mg/kg body weight i.v.), and blood was subsequently collected from the abdominal veins using a 1 ml syringe attached to a needle (21 SWG) [9, 10]. Mice were then sacrificed by cervical dislocation. Blood analysis and serum biochemistry were performed for all collected samples. Whole blood was placed in plain capped bottles containing ethylenediaminetetraacetate (EDTA), and the components were analyzed using an automated cell counter (Beckman-Coulter Inc., Miami, Florida) with standard calibration, according to the manufacturer’s instructions. The levels of white blood cells (WBC), red blood cells (RBC), hemoglobin (HGB), hematocrit (HCT), mean corpuscular

volume (MCV), mean corpuscular hemoglobin (MCH), mean corpuscular hemoglobin concentration (MCHC), corpuscular hemoglobin concentration mean (CHCM), corpuscular hemoglobin content (CH), hemoglobin concentration distribution width (HDW), platelets (PLT), and mean platelet volume (MPV) were measured in duplicate for each sample.

Serum was obtained for biochemical analysis by centrifuging the whole blood at 1,500 xg for 10 min. Serum biochemical components, including alkaline phosphatase (ALP), alanine aminotransferase (ALT), aspartate aminotransferase (AST), calcium (Ca) and low density lipoprotein (LDH), were assayed using an automatic serum analyzer (Hitachi 747; Hitachi, Tokyo, Japan). All assays were measured in duplicate using fresh serum.

Histological analysis

Skin and tumor tissues harvested from mice of all subset groups were fixed overnight in 10% neutral buffered formaldehyde (pH 6.8). The dehydrated tissues were subsequently embedded in paraffin wax, followed by a series of skin and tumor sections (4 μm) cut from the paraffin-embedded tissues using a Leica microtome (Leica Microsystems, Bannockburn, IL, USA). The sections were then deparaffinized with xylene (Daejung, Gyeonggi-do, Korea), rehydrated with graded ethanol (decreasing



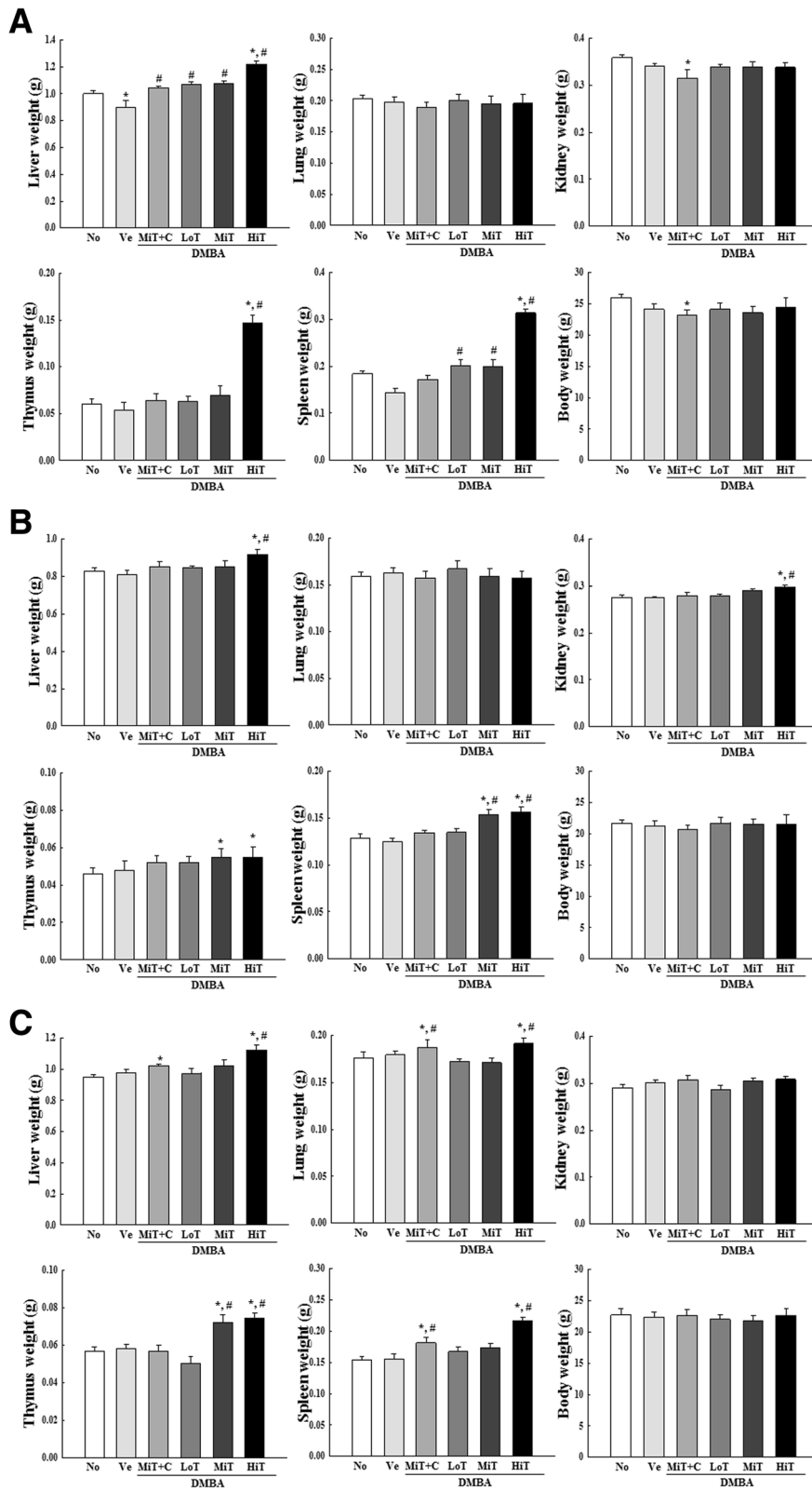


Fig. 3 (See legend on next page.)

(See figure on previous page.)

Fig. 3 Body and organ weight of three BALB/c substrains after DMBA and TPA cotreatment. After final treatment in **a** BALB/cKorl, **b** BALB/cA and **c** BALB/cB, five internal organs, including liver, lung, kidney, thymus and spleen, were collected from mice of subset groups, and their weights were measured in duplicate. Data represent the mean \pm SD. *, $p < 0.05$ compared to the No treated group. #, $p < 0.05$ compared to the Vehicle treated group

concentrations of 100–70%), and finally washed with distilled water. The tissue sections on slides were stained with hematoxylin (Sigma-Aldrich Co.) and eosin (Sigma-Aldrich Co.), and washed with dH₂O. Alterations in the histological structure of tumors were observed under the Leica Application Suite (Leica Microsystems). The tumor type and pathological features were characterized by a pathologist, Dr. Sang Gu Lee, at DDPartner Co. (Seoul, Korea).

Western blot

Total proteins prepared from the tumor tissue were separated by 4–20% sodium dodecyl sulfate-polyacrylamide gel electrophoresis (SDS-PAGE) for 2 h, after which the resolved proteins were transferred to nitrocellulose membranes for 2 h at 40 V. Each membrane was then incubated separately, overnight at 4°C, with the following primary antibodies: p53 (Sigma-Aldrich Co.), p27 (Sigma-Aldrich Co.), Bax (Abcam, Cambridge, UK), anti-Bcl2 (Abcam), caspase-3 (Cell Signaling Technology, Danvers, MA, USA), and anti- β -actin (Cell Signaling Technology). The membranes were then washed with washing buffer (137 mM NaCl, 2.7 mM KCl, 10 mM Na₂HPO₄, and 0.05% Tween 20) and incubated with HRP-conjugated goat anti-rabbit IgG antibody (Invitrogen) at a 1:1000 dilution, at room temperature for 1 h. Membrane blots were developed using Amersham ECL Select Western Blotting detection reagent (GE Healthcare).

Statistical analysis

Statistical analyses were performed with SPSS for Windows, release 10.10, standard version (SPSS, Inc., Chicago, IL, USA). One-way analysis of variance (ANOVA) followed by Tukey's post hoc test for multiple comparisons was performed to identify significant differences between groups. All values are reported as the mean \pm S.E.M, and a p -value ($p < 0.05$) is considered as significant.

Result

Influence of BALB/c substrain background on the tumor induction efficacy in response to DMBA+TPA cotreatment

In order to investigate the influence of the background of BALB/c substrains on tumor induction efficacy to DMBA+TPA exposure, the average number, morphology and incidence rate of tumors were measured after stimulating with three different concentrations of TPA in DMBA sensitized mice. The formation of small solid tumors was observed on the

back skin of all BALB/c substrains after treatment with DMBA+TPA. As shown in Fig. 1b, tumor growth was over a prolonged duration in all three BALB/c substrains (measurement beginning from day 3), and the average increase in tumor numbers was dependent on the concentration of TPA. However, the tumor increase rates between groups differed, and was greater in BALB/cKorl than in BALB/cA and BALB/cB. Especially, the average tumor numbers rapidly increased in the BALB/cKorl group, as compared to the BALB/cA and BALB/cB groups. In the cisplatin treatment group, a significant decrease of tumor number was observed in only BALB/cKorl and BALB/cA, while constant numbers were maintained in BALB/cB mice (Fig. 1b). Furthermore, visual observations for tumor number on the back skin revealed a similar pattern to the increase curve (Fig. 2a). In addition, tumor induction rate calculated from the specified formula showed a tendency similar to the visual observation and average number of tumors. Tumor incidence in BALB/cKorl mice reached 100% at 12 weeks, while the same levels were detected in BALB/cA and BALB/cB at 15 weeks post DMBA treatment. The DMBA+MiT + C treated group showed a similar pattern for tumor incidence, when compared to the three BALB/c substrains (Fig. 2b). These results indicate that background of the three BALB/c substrains affects the skin tumor induction efficacy in response to DMBA+TPA exposure. Especially, the BALB/cKorl substrain shows better sensitivity to DMBA+TPA skin carcinogenesis than the other substrains.

Influence of BALB/c substrain background on alterations in body and organ weight after exposure to DMBA+TPA cotreatment

We investigated the influence of BALB/c substrain background on alterations in the body and organ weights in the three BALB/c substrains exposed to DMBA+TPA. To achieve this, the weights of body, liver, lung, kidney, thymus and spleen were measured after applications of three different concentrations of TPA in DMBA sensitized mice. Most organs showed similar alteration patterns in weight in all three substrains, although few differences were observed. Especially, a significant increase was observed in the weights of the thymus and spleen in the DMBA+HiT treated group, as compared with other groups. These patterns were maintained in all

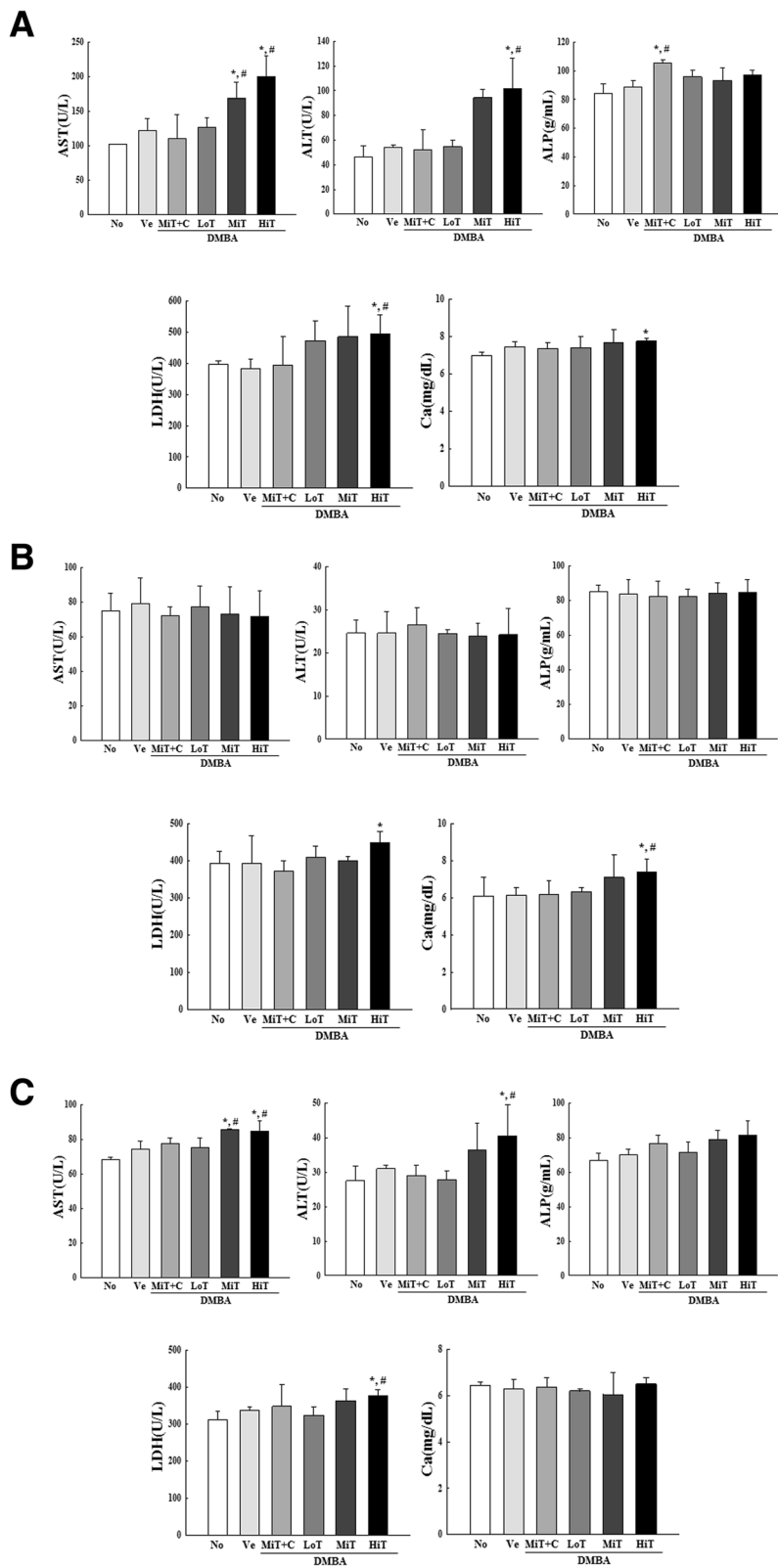


Fig. 4 Serum parameters of three BALB/c substrains after DMBA and TPA cotreatment. After final treatment in **a** BALB/cKorl, **b** BALB/cA and **c** BALB/cB, serum levels of four parameters (AST, ALT, ALP, LDH) and Ca were measured, as described in Materials and Methods. Data represent the mean \pm SD. *, $p < 0.05$ compared to the No treated group. #, $p < 0.05$ compared to the Vehicle treated group

BALB/c substrains. Furthermore, cisplatin treatment induced a slight decrease in body and kidney weights of the BALB/cKorl substrain, increased liver weight in the BALB/cKorl and BALB/cB substrains, and enhanced lung weight in the BALB/cB substrain (Fig. 3). These results indicate that background of the three BALB/c substrains does not affect major alterations in the body and organ weights of mice after treatment with DMBA and TPA.

Influence of BALB/c substrain background on serum levels and blood analyzing factors in response to DMBA+TPA cotreatment

To examine the influence of the background of BALB/c substrains on serum levels and blood analyzing factors in the three BALB/c substrains treated with DBMA+TPA, alterations in the concentrations of serum and blood analyzing factors were measured after stimulating with three different concentrations of TPA in DMBA sensitized mice. Among the serum analyzing factors, a significant difference between substrains was observed in the concentrations of AST, ALT and Ca. The concentration of AST and ALT were dose-dependently increased due to TPA exposure in the BALB/cKorl and BALB/cB substrains, but maintained constant levels in the BALB/cA substrain. However, a reverse pattern

was detected for Ca concentration (Fig. 4). Blood analysis revealed that the concentrations of 12 factors were maintained constant in all DMBA+TPA treated groups as compared to Vehicle treated group. Furthermore, these patterns were similarly detected in BALB/cKorl, BALB/cA and BALB/cB substrains (Data not shown). These results indicate that the background of the three BALB/c substrains does not affect major alterations in serum and blood analyzing factors after exposure to DMBA and TPA.

Influence of BALB/c substrain background on the histopathological structure of skin and tumor in response to DMBA+TPA cotreatment

We further examined the influence of BALB/c substrain background on the histopathological structure of skin and tumor in the three BALB/c substrains treated with DBMA+TPA for 22 weeks. We examined for changes in the histological structure of back skin and tumor after exposure to three different concentrations of TPA in DMBA sensitized mice. Examination of skin tissue harvested from the back of mice revealed significantly increased thickness of the epidermis and dermis in all DMBA+TPA treated groups, as compared with Vehicle treated group. Moreover, a remarkable accumulation of

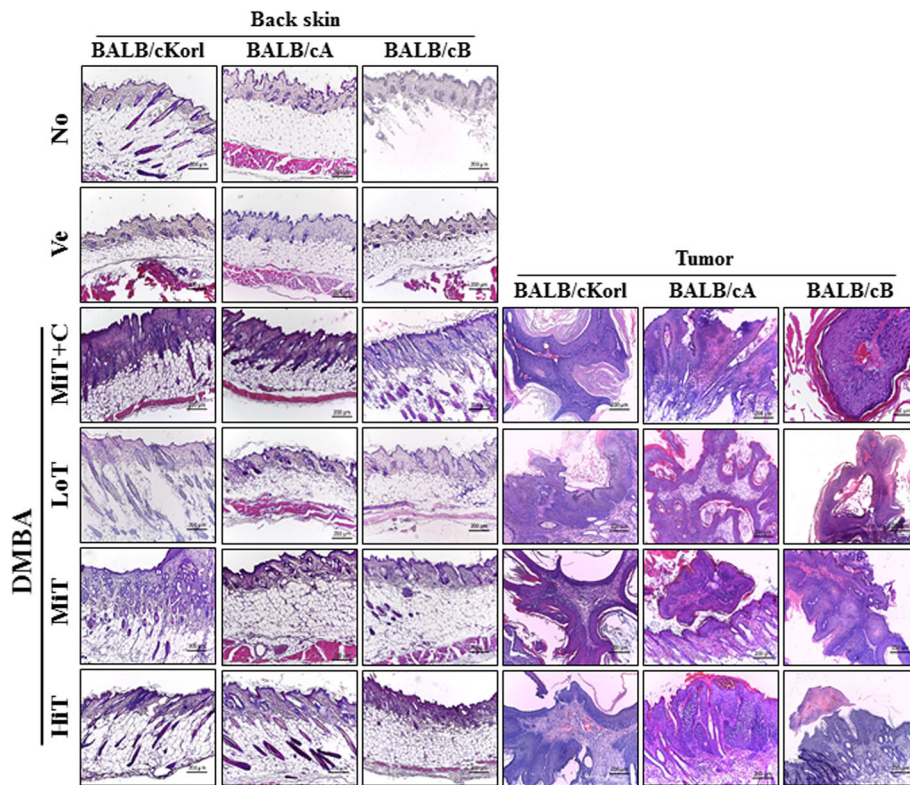


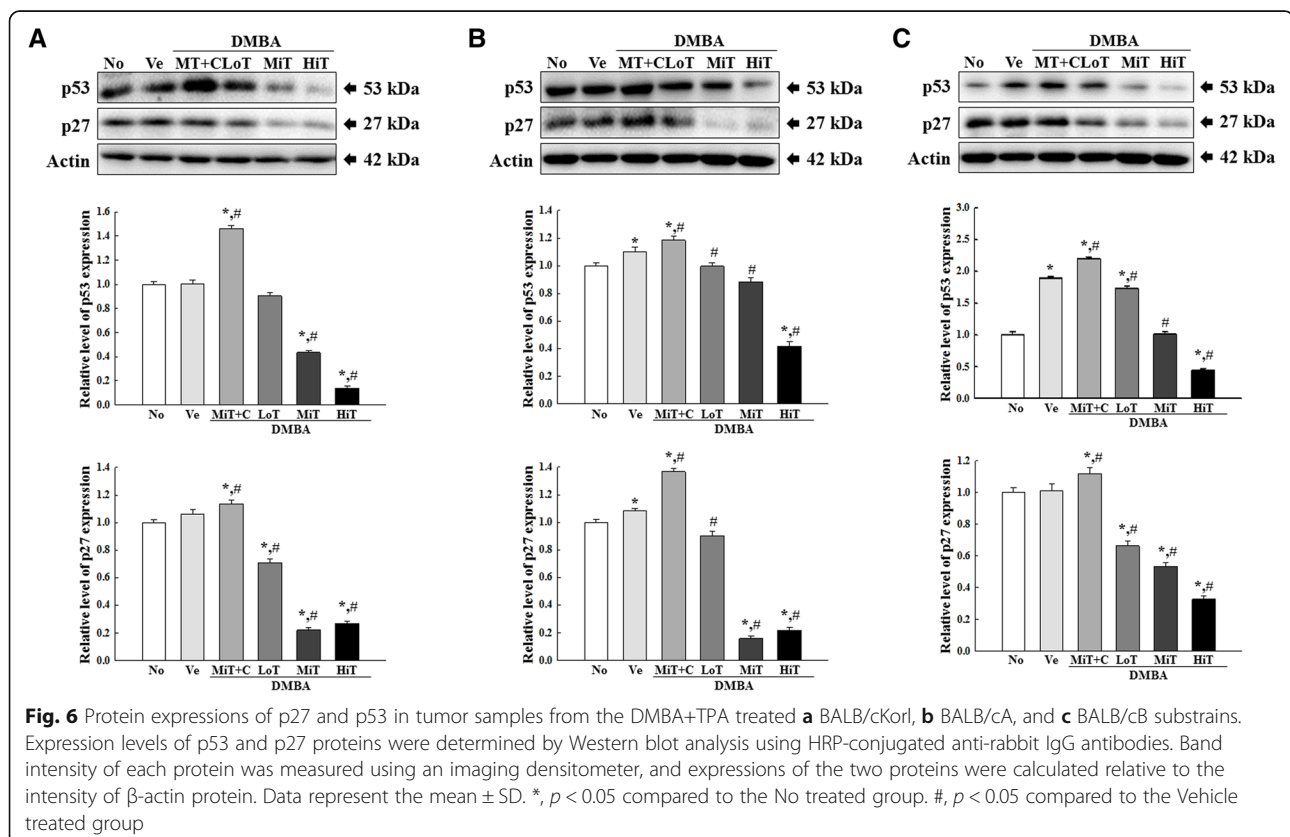
Fig. 5 Histopathological analysis of skin and tumor tissue. After harvesting the skin and tumors from DMBA+TPA treated BALB/c substrains, the histopathological changes in slide sections of skin (left column) and tumor tissue (right column) were identified by staining with hematoxylin and eosin and observation at 200x magnification

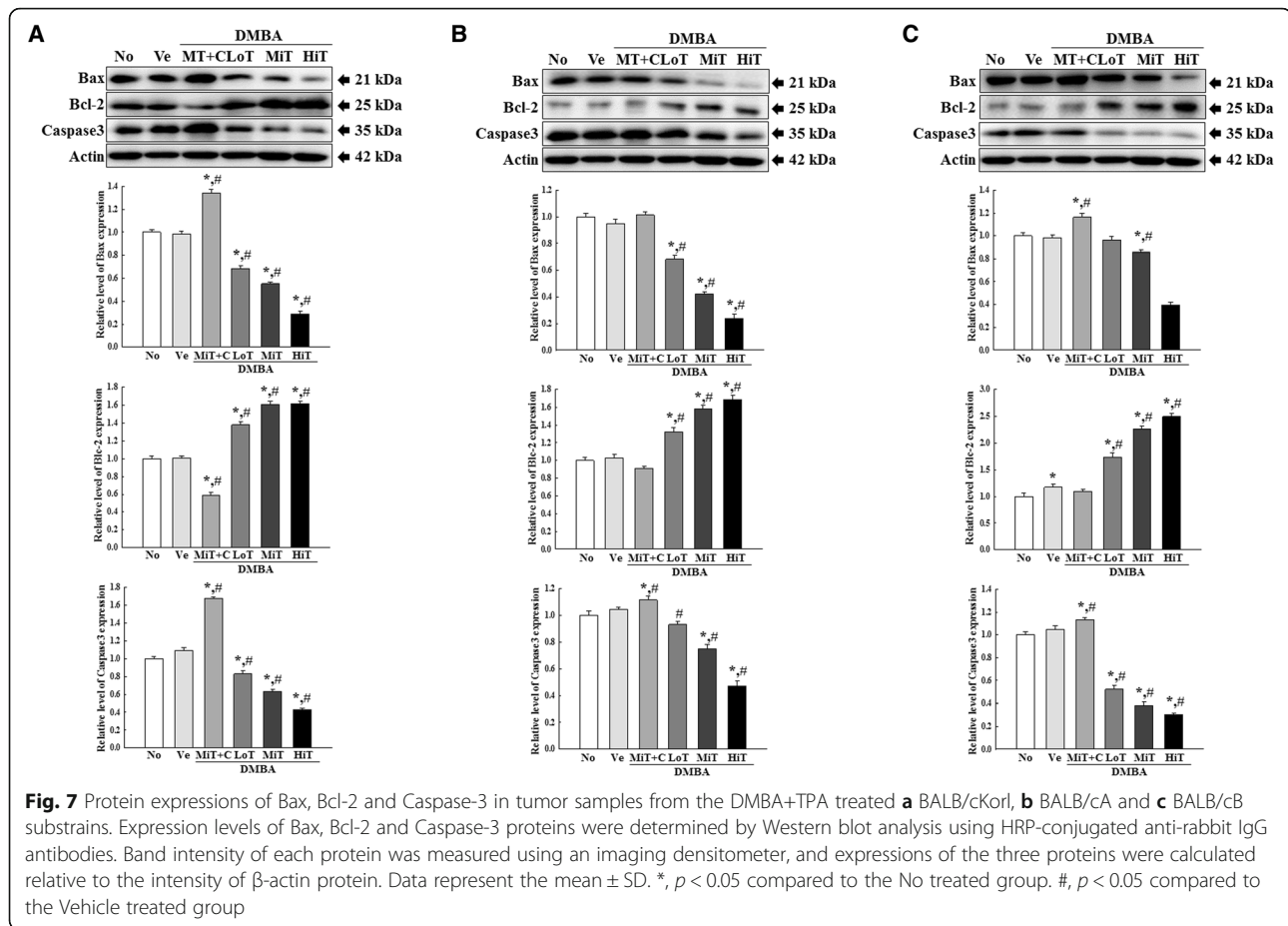
immune cells and enhanced number of hair follicles were detected in the dermis and hypodermis of DMBA+TPA treated groups. These patterns were similarly detected in all the three BALB/c substrains (Fig. 5). Tumor tissue assessment commonly detected squamous cell carcinoma, with alterations of nuclear size, shape, margin, chromatin pattern, nucleoli, and perinucleolar space, in the three substrains. No significant differences were observed in the three substrains, although tumor severity revealed a TPA dose-dependent pattern (Fig. 5). Furthermore, tumor progression was significantly suppressed with cisplatin treatment in the DMBA+MiT treated model. These suppressions were constantly maintained in all three BALB/c substrains (Fig. 5). Taken together, these results indicate that background of the three BALB/c substrains does not majorly affect alterations in the histopathological structure in the DMBA+TPA induced tumors of BALB/cKorl, BALB/cA and BALB/cB substrains.

Influence of BALB/c substrain background on the regulation of tumor suppressor and apoptotic proteins in tumors induced in response to DMBA and TPA cotreatment

Next, we examined the influence of BALB/c substrain background on the regulation of tumor suppressors and

apoptotic proteins during the two-stage skin carcinogenesis in the three BALB/c substrains. To achieve this, alterations in the expression levels of p53, p27, Bax, caspase-3 and Bcl-2 proteins were measured in tumors harvested from mice of the three substrains exposed to DMBA+TPA for 22 weeks. A similar alteration pattern was observed for the expressions of all proteins in the DMBA+TPA treated groups. The expression levels of p53 and p27 proteins decreased in a TPA dose-dependent manner in the DMBA sensitized mice. These decrease patterns were similar for BALB/cKorl, BALB/cA and BALB/cB substrains (Fig. 6). Furthermore, expression levels of Bax and caspase-3 were significantly and dose-dependently decreased in the DMBA+LoT, DMBA+MiT and DMBA+HiT treated groups, as compared to the Vehicle treated group. However, the expression of Bcl-2 was markedly enhanced in the same groups. These alteration patterns were constantly maintained in the BALB/cKorl, BALB/cA and BALB/cB substrains (Fig. 7). A similar regulation pattern was observed in all DMBA+TPA treated BALB/c substrains after exposure to cisplatin (Fig. 7). The above results indicate that background of the three BALB/c substrains does not affect major alterations in the expression levels of apoptotic proteins and tumor related proteins in





BALB/cKorl, BALB/cA and BALB/cB substrains, after treatment with DMBA and TPA.

Discussion

Korl code has been established as one of the novel substrains of several inbred and outbred mice, including C57BL/5, ICR, BALB/c and DBA/2, at the National Institute of Food and Drug Safety Evaluation (NIFDS), Korea [11, 12]. Until now, the biological phenotypes of Korl (Korl:ICR, C57BL/6NKorl, BALB/cKorl and DBA/2Korl) were compared with other substrains provided by commercial vendors, to verify the stability of their characteristics. These phenotypes showed similar responses to various disease-inducing agents in cancer biology, neurobiology, immunology and microbiology [13–16]. As part of the current study, we investigated the influence of BALB/cKorl substrain background on DMBA+TPA induced skin carcinogenesis. To achieve this, alterations in the skin tumor induction efficacy, histopathological structure, and tumor-related protein expressions were compared in BALB/cKorl, BALB/cA and BALB/c substrains. Although the BALB/cKorl substrain showed no significant differences when compared to two BALB/c substrains (the most common biological phenotypes

available) procured from commercial vendors, the BALB/cKorl substrain showed a higher level of tumor incidence.

The two-stage protocol for skin tumorigenesis was first established in the 1920s, when investigating the appearance of tumors in mouse skin treated with carcinogenic tar [17]. This protocol was used for investigating the therapeutic effect of anti-tumor drugs, and for studying the molecular mechanism of epithelial cancers [18]. In the two-stage skin carcinogenesis model, tumors are initiated by application of a single sub-carcinogenic dose of a carcinogen such as DMBA (a polycyclic aromatic hydrocarbon), which is the most widely used initiating agent among chemical initiators. During this process, DMBA induces mutations in the Hras and Kras genes [19]. This irreversible event is further promoted by the repeated application of a tumor promoting agent such as phorbol ester and TPA [18]. After appropriate exposure to DMBA and TPA, papilloma develop as a clonal outgrowth of the skin, and subsequently progress to invasive squamous cell carcinoma (SCC) at 20 weeks [20]. Various doses of the initiator and promoter have been applied to several mouse strains to develop the papilloma, although many studies used a specific dose of

DMBA (25 µg) and TPA (4 µg) [21, 22]. Especially, BALB/c mice were exposed to two different doses (4 µg and 2 µg) of TPA; 4 µg TPA was observed to induce a higher incidence (84%) of papilloma in BALB/c mice, as compared to 2 µg TPA (17%) in the same strain [23, 24]. In the present study, three substrains of BALB/c mice were treated with DMBA (25 µg) and TPA (4 µg) to compare the skin tumor induction efficacy, histopathological structures, and expressions of tumor related proteins in response to DMBA+TPA cotreatment. This dose of TPA successfully induced skin tumors in all experimental groups, although few differences were observed during tumor development.

To determine whether strain background influences the efficacy of tumor induction, strain differences for two-stage chemical carcinogenesis have previously been evaluated in few studies. The outbred SENCAR mice showed high sensitivity to DMBA and TPA, while the inbred DBA/2 and C3H exhibited resistant effects for the two-stage protocol [25–27]. This protocol was also used to induce papilloma in 14 inbred, 2 hybrid, and 15 other genetic stocks. High level of induction efficacy (100–64%) was observed in the RHJ/Le, ABJ/Le, I/LnJ and BALB/cJ strains, whereas intermediate efficacy (58–42%) was detected in the BALB/cByJ, CBA/J and C57BL/6J strains [24]. Furthermore, the susceptibility to two-stage skin carcinogenesis using DMBA and croton oil was evaluated in LACA and BALB/c mice. DMBA was found to be more sensitive in LACA mice than in BALB/c mice, although the metabolic activation of DMBA to the active carcinogen was not limited to the resistant strain [28]. In the current study, we investigated the influence of substrain backgrounds derived from three different sources, on the efficacy of skin tumor induction. Our results show the first evidence that BALB/cKorl, BALB/cA and BALB/cB substrains exhibit similar responses to two-stage skin carcinogenesis and therapeutic effect of cisplatin, in the DMBA+TPA treated model. However, the average number and induction efficacy of tumors were greater in BALB/cKorl substrain than in BALB/cA and BALB/cB. We thought that this difference is attributable to the some unknown environmental stress during transportation and early breeding before purchase because the adaptation period and the experimental conditions are the same.

Conclusion

We evaluated the influence of BALB/c substrain background on the DMBA+TPA-induced skin tumor development. Our results indicate that except few differences in the tumor induction rate, this two-stage chemical carcinogenesis model has overall similar functionality and reactivity to DMBA+TPA as well as to anti-cancer drugs, for all three BALB/c substrains evaluated. The results of

the present study indicate that the BALB/cKorl mice and BALB/c mice from other commercial suppliers can be widely applied to produce a carcinogenesis model through treatment of carcinogen.

Abbreviations

Cisplatin: Cis-diamine dichloroplatinum (II), Pt (NH₃)₂Cl₂; DMBA: 7,12-Dimethylbenz[a]anthracene; TPA: 12-O-Tetradecanoyl Phorbol-13-Acetate

Acknowledgments

We thank the animal technician, Jin Hyang Hwang, for directing the animal care and use at the Laboratory Animal Resources Center.

Authors' contributions

Conceptualization: DYH; Methodology: DYH, MJK and JEG; Validation: MJK and JEG; Formal Analysis: MJK, JEG, JEK, HJC, SJB, YJC, SJL; Investigation: MSS and LY; Writing-Original Draft Preparation: DYH; Writing-Review & Editing: KSK, YSJ and JYC; Supervision: DYH; Funding Acquisition: DYH. All authors have read and approved the final manuscript.

Funding

This project was supported by a 2019 grant of BIOREIN (Laboratory Animal Bio Resources Initiative) received from the Ministry of Food and Drug Safety.

Availability of data and materials

Available.

Competing interests

The authors declare that they have no competing interests.

Author details

¹Department of Biomaterials Science, College of Natural Resources and Life Science/Life and Industry Convergence Research Institute/Laboratory Animals Resources Center, Pusan National University, Miryang, South Korea.

²Laboratory Animal Center, Daegu-Gyeongbuk Medical Innovation Foundation, Daegu, South Korea. ³College of Veterinary Medicine, Kyungpook National University, Daegu, South Korea. ⁴College of Pharmacy, Pusan National University, Busan, South Korea. ⁵Exercise Biochemistry Laboratory, Korea National Sport University, Seoul, South Korea. ⁶Department of Clinical Laboratory Science, College of Nursing and Healthcare Science, Dong-Eui University, Busan, South Korea.

Received: 11 July 2020 Accepted: 24 August 2020

Published online: 03 September 2020

References

- Potter M. History of the BALB/c family. *Curr Top Microbiol Immunol*. 1985; 122:1–5.
- Coletti D, Berardi E, Aulino P, Rossi E, Moresi V, Li Z, Adamo S. Substrains of inbred mice differ in their physical activity as a behavior. *Scientific World J*. 2013;2013:237260.
- Hilgers J, van Nie R, Ivanyi D, Hilkens J, Michalides R, de Moes J, Poort-Keesom R, Kroezen V, von Deimling O, Kominami R, Holmes R. Genetic differences in BALB/c sublines. *Curr Top Microbiol Immunol*. 1985;122:19–30.
- Velez L, Sokoloff G, Miczek KA, Palmer AA, Dulawa SC. Differences in aggressive behavior and DNA copy number variants between BALB/cJ and BALB/cByJ substrains. *Behav Genet*. 2010;40:201–10.
- Leiter EH, Le PH, Prochazka M, Worthen SM, Huppi K. Genetic and environmental control of diabetes induction by multi-dose streptozotocin in two BALB/c substrains. *Diabetes Res*. 1988;9:5–10.
- Wahlsten D. Deficiency of the corpus callosum: incomplete penetrance and substrain differentiation in BALB/c mice. *J Neurogenet*. 1989;5:61–76.
- Nicholson SM, Peterson JD, Miller SD, Wang K, Dal Canto MC, Melvold RW. BALB/c substrain differences in susceptibility to Theiler's murine encephalomyelitis virus-induced demyelinating disease. *J Neuroimmunol*. 1994;52:19–24.
- Kawedia JD, Janke L, Funk AJ, Ramsey LB, Liu C, Jenkins D, Boyd KL, Relling MV. Substrain-specific differences in survival and osteonecrosis incidence in a mouse model. *Comp Med*. 2012;62:466–71.

9. Flecknell P. *Anaesthesia of common laboratory species*. 4th ed. London: Academic Press; 2016.
10. Siriarchavatana P, Ayers JD, Kendall LV. Anesthetic activity of alfaxalone compared with ketamine in mice. *J Am Assoc Lab Anim Sci*. 2016;55:426–30.
11. Choi KM, Jung J, Cho YM, Kim K, Kim MG, Kim J, Kim H, Shin HJ, Kim HD, Chung ST, Cho S, Chung MW. Genetic and phenotypic characterization of the novel mouse substrain C57BL/6N Korl with increased body weight. *Sci Rep*. 2017;7:14217.
12. Kim JE, Nam JH, Cho JY, Kim KS, Hwang DY. Annual tendency of research papers used ICR mice as experimental animals in biomedical research fields. *Lab Anim Res*. 2017;33:171–8.
13. Kim JE, Yun WB, Sung JE, Lee HA, Choi JY, Choi YS, Jung YS, Kim KS, Hwang DY. Characterization the response of Korl:ICR mice to loperamide induced constipation. *Lab Anim Res*. 2016;32:231–9.
14. Kim SH, Kim KJ, Kim JH, Kwak JH, Song H, Cho JY, Hwang DY, Kim KS, Jung YS. Comparison of doxorubicin-induced cardiotoxicity in the ICR mice of different sources. *Lab Anim Res*. 2017;33:165–70.
15. Jeong TB, Kim JH, Kim SH, Lee S, Son SW, Lim Y, Cho JY, Hwang DY, Kim KS, Kwak JH, Jung YS. Comparison of toxic responses to acetaminophen challenge in ICR mice originating from different sources. *Lab Anim Res*. 2019;35:16.
16. Seo MS, Kim YI, Kang KK, Oh SK, Sung SE, Jung YS, Cho JY, Song H, Hwang DY, Park SJ, Kim KS. Comparison study of the response with botulinum toxin muscle injection in the ICR mice from three different sources. *Lab Anim Res*. 2019;35:11.
17. Kemp CJ. Multistep skin cancer in mice as a model to study the evolution of cancer cells. *Semin Cancer Biol*. 2005;15:460–73.
18. Abel EL, Angel JM, Kiguchi K, DiGiovanni J. Multi-stage chemical carcinogenesis in mouse skin: fundamentals and applications. *Nat Protoc*. 2009;4:1350–62.
19. Rehman I, Lowry DT, Adams C, Abdel-Fattah R, Holly A, Yuspa SH, Hennings H. Frequent codon 12 Ki-ras mutations in mouse skin tumors initiated by N-methyl-N'-nitro-N-nitrosoguanidine and promoted by mezerein. *Mol Carcinog*. 2000;27:298–307.
20. Slaga TJ. Cellular and molecular mechanisms involved in multistage skin carcinogenesis. *Carcinog Compr Surv*. 1989;11:1–18.
21. Neagu M, Caruntu C, Constantin C, Boda D, Zurac S, Spandidos DA, Tsatsakis AM. Chemically induced skin carcinogenesis: updates in experimental models (review). *Oncol Rep*. 2016;35:2516–28.
22. Nelson MA, Futscher BW, Kinsella T, Wymer J, Bowden GT. Detection of mutant Ha-ras genes in chemically initiated mouse skin epidermis before the development of benign tumors. *Proc Natl Acad Sci U S A*. 1992;89:6398–402.
23. Hennings H, Glick AB, Lowry DT, Krsmanovic LS, Sly LM, Yuspa SH. FVB/N mice: an inbred strain sensitive to the chemical induction of squamous cell carcinomas in the skin. *Carcinogenesis*. 1993;14:2353–8.
24. Sundberg JP, Sundberg BA, Beamer WG. Comparison of chemical carcinogen skin tumor induction efficacy in inbred, mutant, and hybrid strains of mice: morphologic variations of induced tumors and absence of a papillomavirus cocarcinogen. *Mol Carcinog*. 1997;20:19–32.
25. Conti C, Binder R, Sundberg JP. Histological, biochemical, and molecular evolution of skin lesions using a two-stage chemical carcinogenesis protocol. In: *Pathobiology of the Aging Mouse*, vol. 2. Washington, D.C: ILSI Press; 1996. p. 359–68.
26. Slaga TJ, Fischer SM. Strain differences and solvent effects in mouse skin carcinogenesis experiments using carcinogens, tumor initiators and promoters. *Prog Exp Tumor Res*. 1983;26:85–109.
27. Slaga TJ. SENCAR mouse skin tumorigenesis model versus other strains and stocks of mice. *Environ Health Perspect*. 1986;68:27–5.
28. Ashman LK, Murray AW, Cook MG, Kotlarski I. Two-stage skin carcinogenesis in sensitive and resistant mouse strains. *Carcinogenesis*. 1982;3:99–3.

Publisher's Note

Springer Nature remains neutral with regard to jurisdictional claims in published maps and institutional affiliations.

Ready to submit your research? Choose BMC and benefit from:

- fast, convenient online submission
- thorough peer review by experienced researchers in your field
- rapid publication on acceptance
- support for research data, including large and complex data types
- gold Open Access which fosters wider collaboration and increased citations
- maximum visibility for your research: over 100M website views per year

At BMC, research is always in progress.

Learn more biomedcentral.com/submissions

