

RESEARCH

Open Access



Bartonella DNA in heart tissues of bats in central and eastern Europe and a review of phylogenetic relations of bat-associated bartonellae

Alexandra Corduneanu¹, Attila D. Sándor¹, Angela Monica Ionică¹, Sándor Hornok², Natascha Leitner³, Zoltán Bagó⁴, Katharina Stefke⁵, Hans-Peter Fuehrer³ and Andrei Daniel Mihalca^{1*}

Abstract

Background: Bats are among the most widely distributed mammals worldwide and can represent hosts or reservoirs for a number of different pathogens. *Bartonella* spp. are opportunistic bacterial pathogens, which are transmitted by a large variety of arthropods. The aim of this study was to investigate the presence and host-associations of these Gram-negative bacteria in heart tissues of bats collected in four different countries from eastern and central Europe and to analyze their phylogenetic relationship with other bat-associated bartonellae.

Results: The results of this study show for the first time the presence of *Bartonella* spp. DNA in heart tissues of bats from central and eastern Europe. The overall prevalence of the infection was 1.38%. Phylogenetic analysis identified four new *Bartonella* spp. sequences, which were closely related with other *Bartonella* previously isolated from bats in Europe and North America.

Conclusions: The *gltA* sequences of *Bartonella* spp. showed considerable heterogeneity in the phylogenetic analysis resulting in six different clades. Our study demonstrated the presence of *Bartonella* spp. only in heart tissues of bats from Romania, with two new bat species recorded as hosts (*Myotis* cf. *alcathoe* and *Pipistrellus pipistrellus*).

Keywords: Bacterial pathogens, *Bartonella* spp., Diversity, Heart tissues, *Myotis*, *Pipistrellus*

Background

Bats are among the most widespread mammalian species worldwide with high local diversity and abundance. They are divided in two suborders: Yinpterochiroptera with distribution especially in the tropical regions and Yangochiroptera more widely distributed and with higher species diversity [1]. They are unique among mammals, as they have the ability to fly, even for long distances during the migration periods [2, 3]. Moreover, they can live in dense colonies, sometimes consisting in several bat species. Bats can adapt to various environmental conditions, and act as potentially important reservoir hosts for multiple pathogens, including zoonotic ones [4]. Multiple studies

demonstrated their role as natural reservoirs for different pathogens including viruses [5–7], bacteria [8, 9] and parasites [10–12].

The genus *Bartonella* is a relatively diverse group of Gram-negative, facultative intracellular, haemotropic, vector-borne, bacteria that infect a wide-range of mammals and have a global distribution. After infection, the bacteria eventually enter the erythrocytes and endothelial cells and can persist asymptotically in a wide range of mammalian reservoir hosts such as rodents, insectivores, carnivores, and ungulates [13–15]. The infection is transmitted mainly by arthropod vectors including fleas [16], sand flies [17], lice [18], mites [19] and ticks [20, 21]. The transmission and evolution of *Bartonella* species in mammals is the result of a complex relationship between multiple hosts, vectors and pathogens. There are many species of *Bartonella*, some of them with a large host spectrum and

* Correspondence: amihalca@usamvcluj.ro

¹Department of Parasitology and Parasitic Diseases, University of Agricultural Sciences and Veterinary Medicine of Cluj-Napoca, Cluj Napoca, Romania
Full list of author information is available at the end of the article



zoonotic potential (i.e. *B. henselae*, *B. grahamii*, *B. elizabethae*, *B. koehlerae* and *B. rochalimae*) while some others are known only from single host species [22–24].

Bartonella spp. has been reported with different prevalence and a high genetic diversity in bats and bat flies [25–29]. However, the knowledge on the occurrence of *Bartonella* in tissues of bats is still scarce. In Europe there are two studies reporting the presence of *Bartonella* spp. in bat tissues, involving different species [30, 31]. Both are geographically located at the margins of the continent (UK vs Georgia). Bai et al. [9] found 35 % of 218 bats positive for *Bartonella* DNA and more than 25 genetic variants were identified. Urushadze et al. [30] investigated the presence of *Bartonella* in the blood of 212 live bats by culture followed by PCR and found a 49.5 % prevalence.

Considering all these, the aim of our study was to demonstrate the presence and diversity of *Bartonella* spp. in heart tissues of different species of bats from central and eastern Europe. We primarily targeted bat species which are rarely recorded in caves (and are less represented in epidemiological studies), with accent on building-dwelling bats, the group with the highest contact rate with humans and potentially posing a zoonotic risk.

Methods

A total of 435 carcasses were collected from different countries from central and eastern Europe (Austria, Czech Republic, Hungary and Romania) between 2001 and 2016 (Additional file 1: Table S1). The samples were collected from carcasses of bats accidentally killed (collision with man-made structures, road kills) or that had died of natural causes (e. g. hypothermia caused by early spring emergence) and stored in freezer at -20 °C (samples from Czech Republic, Hungary and Romania) or at -80 °C (samples from Austria) until their necropsy. From each bat the heart was collected, as this was the only tissue available from all animals. No live bat was harmed or killed for the purpose of this study. Bats were identified to species level using morphological keys [31]. Genomic DNA was extracted from 25 mg of heart tissue using DNeasy Blood & Tissue Kit (Qiagen, Hilden, Germany) according to the manufacturer's instructions using 200 µl of elution buffer and stored at -20 °C.

A PCR targeting the 370 bp of the *gltA* encoding gene was employed, using the following primers: CSH1f (5'-GCG AAT GAA GCG TGC CTA AA-3') and BhCS.1137 (5'-AAT GCA AAA AGA ACA GTA AAC A-3') [32]. The reactions were carried out in 25 µl reaction mixture which contained 12.5 µl 2× Green Master Mix (Roalab GmBH, Teltow, Germany), 6.5 µl water, 1 µl of each primer (0.01 mM final concentration) and 4 µl aliquot of isolated DNA. The PCR was performed using the T1000™ Thermal Cycler (Bio-Rad, Hercules, CA, USA) with the following conditions: initial denaturation at 95 °C

for 5 min, followed by 35 cycles of denaturation at 95 °C for 30 s, annealing at 52.5 °C for 30 s and extension at 72 °C for 30 s and a final extension at 72 °C for 10 min. For each set of reactions (45 samples), 2 negative controls (PCR water) and one positive control which was DNA obtained from a *Bartonella henselae*, strain (ID 54A) isolated from a cat from Israel [33]. Amplification products were visualized by electrophoresis on 1.5% agarose gel stained with RedSafe™ 20,000× Nucleic Acid Staining Solution (ChemBio, St Albans, UK), and their molecular weight was assessed by comparison to a molecular marker (Hyperladder IV, Bioline, London, UK). PCR products were purified using a commercial kit (Isolate II PCR and Gel Kit, Bioline, London, UK) and sent for sequencing with the primers described above in both directions (Macrogen Europe, Amsterdam, Netherlands).

The sequences were compared with those available in GenBank using Basic Local Alignments Tool (BLAST) analysis. The evolutionary history was inferred by Maximum Likelihood method based on the Tamura-Nei model [34]. The *gltA* gene has been shown to be suitable for phylogenetic analysis among *Bartonella* species [35] and is currently the most widely used to detect *Bartonella* infection. Using the search query keywords '*Bartonella* bats *gltA*', we retrieved from GenBank all the sequences available from bats and their ectoparasites. Furthermore, based on the available literature concerning bartonellae from bats, we produced a database, where, from each unique *Bartonella gltA* genotype found, we included data on the host species and the species of the ectoparasite, in the case they were present (Additional file 2: Table S2). For phylogenetic analyses, as the lengths of the downloaded *gltA* sequences were different, they were trimmed to a length of 232 base pairs. In total, the phylogenetic analysis included 210 unique *Bartonella* genotypes from bat flies as well as from bats belonging to 8 families from both suborders. *Brucella melitensis* was chosen as outgroup, as it is also an Alphaproteobacteria from the order Rhizobiales.

Statistical analysis was performed using EpiInfo™ 7 (CDC, USA) software. The overall prevalence of *Bartonella* spp., the prevalence at locality level and the prevalence for each bat species and their 95% confidence interval (95% CI) were calculated.

Results

Overall, 435 samples were tested for the presence of *Bartonella* spp. DNA. A total of 6 samples were positive (1.38%). The positive samples belonged to three bat species: *Myotis cf. alcaethoe* (3/12; 25%), *Nyctalus noctula* (2/228; 0.88%) and *Pipistrellus pipistrellus* (1/68; 1.47%). The following species were negative (numbers of examined bats in parentheses): *Barbastella barbastellus* ($n = 2$); *Eptesicus nilssonii* ($n = 1$); *E. serotinus* ($n = 6$); *Hypsugo savii* ($n = 9$); *Miniopterus schreibersii* ($n = 4$); *My. bechsteini* ($n = 4$); *My.*

cf. *brandtii* ($n = 3$); *My. daubentonii* ($n = 2$); *My. myotis* ($n = 6$); *My. cf. mystacinus* ($n = 4$); *My. nattereri* ($n = 1$); *Nyctalus leisleri* ($n = 5$); *Pipistrellus kuhlii* ($n = 8$); *Pi. nathusii* ($n = 28$); *Pi. pygmaeus* ($n = 5$); *Plecotus auritus* ($n = 7$); *Pl. austriacus* ($n = 1$); *Rhinolophus euryale* ($n = 9$); *R. ferrumequinum* ($n = 1$); *R. hipposideros* ($n = 1$); and *Vespertilio murinus* ($n = 20$).

All positive samples ($n = 6$) originated from three locations in Romania: Muntele Puciosu (3/31; 9.68%), Cheile Bicazului (2/92; 2.17%) and Huda lui Papară (1/68; 1.47%) (Table 1).

The analysis of the sequences showed that two from Muntele Puciosu and two from Cheile Bicazului were identical to each other, resulting in 4 unique sequences. The four sequences differed from each other by 6–24 nucleotides (Table 2).

BLAST analysis of the *gltA* sequences showed 96–98% similarity to different sequences, isolated from bats in Europe (Georgia, GenBank: KX300154.1 and KX300200.1; and UK, GenBank: AJ871614.1) (Table 3). All sequences were submitted to the GenBank database under the accession numbers MG914431–MG914434.

The global molecular phylogenetic analysis using the *gltA* sequences of *Bartonella* spp. isolated from bats in different parts of the world showed the presence of six major clades (Table 4, Fig. 1).

The first clade consisted in *Bartonella* spp. genotypes isolated from bats or bat flies in the Americas as well as sequences of the zoonotic pathogen *B. mayotimonensis* but also one of the sequences isolated from a bat in Romania. The other three sequences of *Bartonella* spp. in our study clustered in the second clade, together with various sequences isolated from Europe (Finland, France, Georgia, Spain and the UK) and four sequences isolated from North America. The third cluster consisted in different sequences isolated from the Old World (Asia, Europe and Africa). The fourth clade was the largest and most diverse and included sequences isolated from four different continents. The fifth clade comprised sequences from both Old World and New World, while the sixth clade consisted exclusively in sequences from South America, belonging to Yangochiroptera (Fig. 1).

Discussion

This study investigated the presence, prevalence and genetic diversity of *Bartonella* spp. in insectivorous bats from three different countries from central and eastern Europe and is the first evidence of the presence of these bacteria in heart tissues of bats from eastern and central Europe. This is the first study where *My. cf. alcaethoe* and *Pi. pipistrellus* were found positive for *Bartonella* spp., while *Ny. noctula* was previously reported to harbour this group of pathogens [36, 37]. Multiple bat species may share the same *Bartonella* species without evident host specificity

Table 1 Distribution and location of sample tested

Country	Location	<i>n</i>	<i>Bartonella</i> spp.
Austria	Baden	1	–
	Hermagor	1	–
	Hollabrun	1	–
	Klosterneuburg	1	–
	Korneuburg	3	–
	Mauerbach	2	–
	Mödling	4	–
	Neulengbach	1	–
	Salzburg	1	–
	Stockerau	1	–
	Telfs Innsbruck Land	1	–
	Tulln	1	–
	Vienna	42	–
	Winer Neustadt	1	–
Czech Republic	Brno	39	–
	Heroltovice	1	–
	Malá Morávka	1	–
	Ochoz	3	–
	Znojmo	1	–
Hungary	Edelény	9	–
	Eger	19	–
Romania	Babadag	47	–
	București	8	–
	Cheile Bicazului	88	Yes
	Huda lui Papară	68	Yes
	Iași	50	–
	Muntele Puciosu	30	Yes
	Peștera cu Apă din Valea Leșului	1	–
	Peștera Meziad	1	–
	Peștera Liliecilor- Bistrița Monastery	1	–
	Sântu Gheorghe	1	–
	Sibiu	1	–
Peștera Tăușoarele	1	–	
Tulcea	1	–	
Ugron	1	–	

Abbreviation: *n* number of samples collected

[38, 39] or they can harbour one or few *Bartonella* species-specific for a particular bat species [25, 36, 40, 41].

Reports of *Bartonella* infections are known from blood of bats from various countries across the world with different prevalence. High prevalence was reported in Georgia [30], Taiwan [42], Guatemala [38], Costa Rica [27], Kenya [40] and China [43], compared with a low prevalence in South Africa, Swaziland [29] and the USA [44]. Most of the studies were focused on the detection of *Bartonella* spp. in

Table 2 Differences regarding the number of nucleotides between sequences isolated in Romania

	MG914431.1	MG914432.1	MG914433.1
Distance			
MG914432.1	0.032	–	–
MG914433.1	0.009	0.038	–
MG914434.1	0.009	0.044	0.018
No. of nucleotides			
MG914432.1	20	–	–
MG914433.1	6	21	–
MG914434.1	6	24	11

blood and bat associated ectoparasites [45, 46], but researchers from Argentina [47], France, Spain [37], Georgia [9] and the UK [36] tested also tissues for the presence of the bacteria. The positive bats from France, Spain and the UK, together with our positive samples belonged to the family Vespertilionidae, which contain high number of building-dwelling bats species. The positive bats from Argentina and Georgia belonged to three different bat families, the Molossidae, Rhinolophidae and Vespertilionidae, with all the analysed bats were cave-dwelling species. On the family level, the prevalence of *Bartonella* was estimated to be between 7.3% on species of the family Nycteridae and 54.4% on species of the Minipteridae [37]. The report of low prevalence of *Bartonella* DNA in bats from Romania may be the result that we targeted only one molecular marker (the *gltA* gene) instead of multiple markers [48] and the majority of bat species analyzed are rarely parasitized by bat flies, which are suggested to be the main vectors for *Bartonella* sp. [49].

The global phylogenetic analysis of the sequences considered in this study showed that there is a high diversity among *Bartonella* isolated from bats and their ectoparasites. The distribution of *Bartonella* spp. in different bat families depends also on the geographical distribution of that particular family (Table 4). Three of the clades (I, II and VI) include only *Bartonella* spp. isolated from Yangochiroptera. The most diverse clade regarding the number of bat host families was clade IV: the Minipteridae and Vespertilionidae (Yangochiroptera) and the Hipposideridae, Pteropodidae and Rhinolophidae (Yinpterochiroptera) (Table 4). Sequences of *Bartonella* spp. isolated from bats belonging to the family Vespertilionidae

Table 3 Results of the BLAST analysis

Sequence ID	Identity (%)	Acc. no.	Origin	Host
MG914431	98	KX300154.1	Georgia	<i>Myotis emarginatus</i>
MG914432	97	KX300200.1	Georgia	<i>Eptesicus serotinus</i>
MG914433	96	KX300154.1	Georgia	<i>Myotis emarginatus</i>
MG914434	96	AJ871614.1	UK	<i>Pipistrellus</i> sp.

Table 4 Hosts and geographical distribution of the six major clades of bat-associated bartonellae

Clade	Host order	Host family	Geographical distribution		
I	Yangochiroptera	Phyllostomidae	Central and South America		
		Mormoopidae	Central and South America		
		Vespertilionidae	North America, Europe		
II	Yangochiroptera	Vespertilionidae	North America, Europe		
III ^a	Yangochiroptera	Vespertilionidae	Asia, Europe		
		Yinpterochiroptera	Pteropodidae	Africa	
		Rhinolophidae	Africa, Asia		
		IV ^a	Yangochiroptera	Minipteridae	Africa
				Vespertilionidae	Asia, Europe, North America
	Yinpterochiroptera	Hipposideridae	Africa, Asia		
		Pteropodidae	Africa		
		Rhinolophidae	Africa, Asia		
V ^a	Yangochiroptera	Noctilionidae	South America		
		Phyllostomidae	Central and South America		
	Yinpterochiroptera	Pteropodidae	Africa		
		Rhinolophidae	Asia		
VI	Yangochiroptera	Phyllostomidae	Central America		
		Vespertilionidae	Central America		

^aPresent also sequences from bat flies

were present in five out of six clades (all except clade V), as this family is among the most diverse, widespread and well-studied. In Europe there are 44 bat species out of which 35 belong to Vespertilionidae [31] and all the studies conducted in this part of the Old World for detection of *Bartonella* spp. were focused mainly on this family [36, 37, 50, 51]. Our study was performed on various bat species, with the positive samples belonging to the family Vespertilionidae and the negative belonging to the families Minipteridae and Rhinolophidae.

So far, the pathogenicity of bat-associated bartonellae to humans remains unknown, and further studies are needed to clarify their zoonotic potential. There are reports from Finland and the USA where different Vespertilionidae bats harboured the human pathogen *B. mayotimonensis* [44, 50], which was originally detected in the resected aortic valve of a 59-year-old patient from the USA [41]. Stuckey et al. [37] suggested that studies regarding the detection of *Bartonella* spp. in bats should be focused especially on those belonging to the Vespertilionidae (genera *Nyctalus*, *Pipistrellus* and *Myotis*), as the *Bartonella* isolated from these genera seem to be genetically related to *B. mayotimonensis*. Although all the positive samples from Romania were isolated from species of the family Vespertilionidae, our study did not reveal sequences related with any of the zoonotic *Bartonella* genotypes.

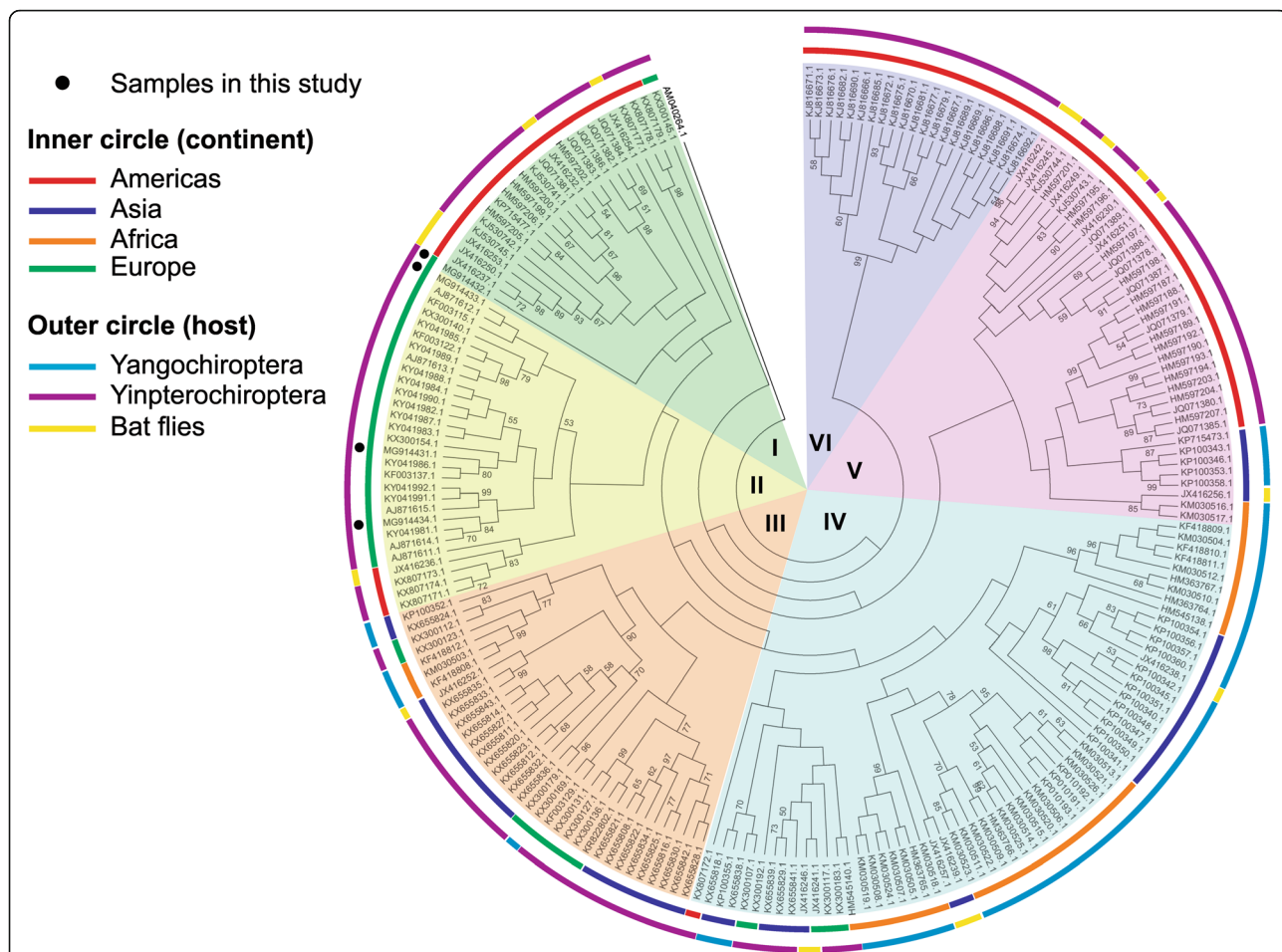


Fig. 1 Phylogenetic tree of bat associated bartonellae. The evolutionary history was inferred by using the Maximum Likelihood method based on the Tamura-Nei model [34]. The bootstrap consensus tree inferred from 1000 replicates [56] is taken to represent the evolutionary history of the taxa analyzed [56]. Branches corresponding to partitions reproduced in less than 50% bootstrap replicates are collapsed. Initial tree(s) for the heuristic search were obtained automatically by applying Neighbor-Join and BioNJ algorithms to a matrix of pairwise distances estimated using the Maximum Composite Likelihood (MCL) approach, and then selecting the topology with superior log-likelihood value. The analysis involved 210 nucleotide sequences. There were a total of 232 positions in the final dataset. Evolutionary analyses were conducted in MEGA7 [57]

Diverse genetic variants of *Bartonella* were found in bats and their associated bat flies, suggesting that the latter may act as vectors. *Bartonella* spp. prevalence is higher in bat ectoparasites and have a much more genetic diversity compared with those isolated from the bats [26, 28, 38, 39, 42, 49, 50, 52–55].

Conclusions

This study showed that bats can harbour different strains of *Bartonella* spp., but with a low prevalence, reporting the presence of these bacteria in two new hosts (*My. cf. alcatheae* and *Pi. pipistrellus*). The molecular phylogenetic analysis conducted in this study revealed a high genetic diversity among *Bartonella* spp. isolated from bats in different parts of the world, with the presence of six major clades.

Additional files

- Additional file 1: Table S1.** Samples distribution according to locality and species. (XLSX 14 kb)
- Additional file 2: Table S2.** Detailed information regarding the sequences used in the phylogenetic analysis. (XLSX 29 kb)

Abbreviations

BLAST: Basic Local Alignment Search Tool

Acknowledgements

We are grateful for the help of our collaborators during field work and sample collection: Ioan Coroiu, Ioana Adriana Matei, Levente Barti, Lucie Dufková, Daniel Ruzek, Péter Estók, Sándor Boldogh, Irina Pocora, Viorel Pocora, Dragoș Ștefan Mântoiu, Marius-Alexandru Ciocănu and Teodor Dan Ursache. Special thanks to Ricardo Gutiérrez and Shimon Harrus for all the help regarding PCR protocols and for providing us the positive control.

Funding

This study was published under the frame of UEFISCDI project PCCDI 57/2018 and was supported by the János Bolyai Research Scholarship of Hungarian Academy of Science (to ADS).

Availability of data and materials

The data supporting the conclusion of this article are provided within the article and its additional files. The sequences were submitted to the GenBank database under the accession numbers MG914431-MG914434.

Authors' contributions

AC, ADS and ADM wrote the manuscript, ADS, SH, ZB and KS collected the material for the study, ADS, SH, NL, ZB and KS helped in the identification of bat species, AC and AMI performed the necropsy, AC and AMI performed laboratory work and analysis of the data, ADS, AMI, SH, HPF and ADM participated in manuscript correction. All authors read and approved the final manuscript.

Ethics approval and consent to participate

Not applicable.

Consent for publication

Not applicable.

Competing interests

The authors declare that they have no competing interests.

Publisher's Note

Springer Nature remains neutral with regard to jurisdictional claims in published maps and institutional affiliations.

Author details

¹Department of Parasitology and Parasitic Diseases, University of Agricultural Sciences and Veterinary Medicine of Cluj-Napoca, Cluj Napoca, Romania.

²Department of Parasitology and Zoology, University of Veterinary Medicine, Budapest, Hungary. ³Department of Pathobiology, Institute of Parasitology, University of Veterinary Medicine, Vienna, Austria. ⁴Institute for Veterinary Disease Control, Austrian Agency for Health and Food Safety (AGES), Mödling, Austria. ⁵Museum of Natural History, Vienna, Austria.

Received: 11 May 2018 Accepted: 20 August 2018

Published online: 29 August 2018

References

- Teeling EC, Springer MS, Madsen O, Bates P, O'Brien SJ, Murphy WJ. A molecular phylogeny for bats illuminates biogeography and the fossil record. *Science*. 2005;307:580–4.
- Petit E, Mayer F. A population genetic analysis of migration: the case of the noctule bat (*Nyctalus noctula*). *Mol Ecol*. 2000;9:683–90.
- Moussy C, Hosken DJ, Mathews F, Smith GC, Aegerter JN, Bearhop S. Migration and dispersal patterns of bats and their influence on genetic structure. *Mamm Rev*. 2013;43:183–95.
- Moratelli R, Calisher CH. Bats and zoonotic viruses: can we confidently link bats with emerging deadly viruses? *Mem Inst Oswaldo Cruz*. 2015;110:1–22.
- Dacheux L, Cervantes-Gonzalez M, Guigon G, Thiberge JM, Vandenbogaert M, Mauffrais C, et al. A preliminary study of viral metagenomics of french bat species in contact with humans: identification of new mammalian viruses. *PLoS One*. 2014;9:e87194.
- Kading RC, Schountz T. Flavivirus infections of bats: potential role in Zika virus ecology. *Am J Trop Med Hyg*. 2016;95:993–6.
- Afelt A, Lacroix A, Zawadzka-Pawlewska U, Pokojski W, Buchy P, Frutos R. Distribution of bat-borne viruses and environment patterns. *Infect Genet Evol*. 2018;58:181–91.
- Mühlendorfer K, Speck S, Wibbelt G. Diseases in free-ranging bats from Germany. *BMC Vet Res*. 2011;7:61.
- Bai Y, Urushadze L, Osikowicz L, McKee C, Kuzmin I, Kandaurov A, et al. Molecular survey of bacterial zoonotic agents in bats from the country of Georgia (Caucasus). *PLoS One*. 2017;12:e0171175.
- Hornok S, Estók P, Kováts D, Flaisz B, Takács N, Szóke K, et al. Screening of bat faeces for arthropod-borne apicomplexan protozoa: *Babesia canis* and *Besnoitia besnoiti*-like sequences from Chiroptera. *Parasit Vectors*. 2015;8:441.
- Hornok S, Szóke K, Kováts D, Estók P, Göröf T, Boldogh SA, et al. DNA of piroplasmids of ruminants and dogs in ixodid bat ticks. *PLoS One*. 2016;11:e0167735.
- Corduneanu A, Hrazdilová K, Sándor AD, Matei IA, Ioniță AM, Barti L, et al. *Babesia vesperuginis*, a neglected piroplasmid: new host and geographical records, and phylogenetic relations. *Parasit Vectors*. 2017;10:598.
- Gerrikagoitia X, Gil H, García-Esteban C, Anda P, Juste RA, Barral M. Presence of *Bartonella* species in wild carnivores of northern Spain. *Appl Environ Microbiol*. 2012;78:885–8.
- Gutiérrez R, Krasnov B, Morick D, Gottlieb Y, Khokhlova IS, Harrus S. *Bartonella* infection in rodents and their flea ectoparasites: an overview. *Vector Borne Zoonotic Dis*. 2015;15:27–39.
- Chomel BB, Molia S, Kasten RW, Borgo GM, Stuckey MJ, Maruyama S, et al. Isolation of *Bartonella henselae* and two new *Bartonella* subspecies, *Bartonella koehlerae* subspecies *boulousii* subsp. nov. and *Bartonella koehlerae* subspecies *bothieri* subsp. nov. from free-ranging californian mountain lions and bobcats. *PLoS One*. 2016;11:e0148299.
- Zouari S, Khrouf F, M'ghirbi Y, Bouattour A. First molecular detection and characterization of zoonotic *Bartonella* species in fleas infesting domestic animals in Tunisia. *Parasit Vectors*. 2017;10:436.
- Battisti JM, Lawyer PG, Minnick MF. Colonization of *Lutzomyia verrucarum* and *Lutzomyia longipalpis* sand flies (Diptera: Psychodidae) by *Bartonella bacilliformis*, the etiologic agent of Carrion's disease. *PLoS Negl Trop Dis*. 2015;9:e0004128.
- Gutiérrez R, Cohen L, Morick D, Mumcuoglu KY, Harrus S, Gottlieb Y. Identification of different *Bartonella* species in the cattle tail louse (*Haematopinus quadripertusus*) and in cattle blood. *Appl Environ Microbiol*. 2014;80:5477–83.
- Loan HK, Van Cuong N, Takhampunya R, Klangthong K, Osikowicz L, Kiet BT, et al. *Bartonella* species and trombiculid mites of rats from the Mekong Delta of Vietnam. *Vector Borne Zoonotic Dis*. 2015;15:40–7.
- Klangthong K, Promsthaporn S, Leepitakrat S, Schuster AL, McCordle PW, Kosoy M, et al. The distribution and diversity of *Bartonella* species in rodents and their ectoparasites across Thailand. *PLoS One*. 2015;10:e0140856.
- Eraqat S, Nasereddin A, Vayssier-Taussat M, Abdelkader A, Al-Jawabreh A, Zaid T, et al. Molecular evidence of *Bartonella* species in ixodid ticks and domestic animals in Palestine. *Front Microbiol*. 2016;7:1217.
- Bown KJ, Bennett M, Begon M. Flea-borne *Bartonella grahamii* and *Bartonella taylorii* in bank voles. *Emerg Infect Dis*. 2004;10:684–7.
- Breitschwerdt EB, Maggi RG, Mozayani BR, Hegarty BC, Bradley JM, Mascarelli PE. PCR amplification of *Bartonella koehlerae* from human blood and enrichment blood cultures. *Parasit Vectors*. 2010;3:76.
- Berrich M, Kieda C, Grillon C, Monteil M, Lamerant N, Gavard J, et al. Differential effects of *Bartonella henselae* on human and feline macro- and micro-vascular endothelial cells. *PLoS One*. 2011;6:e20204.
- Kamani J, Baneth G, Mitchell M, Mumcuoglu KY, Gutiérrez R, Harrus S. *Bartonella* species in bats (Chiroptera) and bat flies (Nycteribiidae) from Nigeria, West Africa. *Vector Borne Zoonotic Dis*. 2014;14:625–32.
- Brook CE, Bai Y, Dobson AP, Osikowicz LM, Ranaivoson HC, Zhu Q, et al. *Bartonella* spp. in fruit bats and blood-feeding ectoparasites in Madagascar. *PLoS Negl Trop Dis*. 2015;9:e0003532.
- Judson SD, Frank HK, Hadly EA. Bartonellae are prevalent and diverse in Costa Rican bats and bat flies. *Zoonoses Public Health*. 2015;62:609–17.
- Olival KJ, Dittmar K, Bai Y, Rostal MK, Lei BR, Daszak P, et al. *Bartonella* spp. in a Puerto Rican bat community. *J Wildl Dis*. 2015;51:274–8.
- Dietrich M, Tjale MA, Weyer J, Kearney T, Seamark ECJ, Nel LH, et al. Diversity of *Bartonella* and *Rickettsia* spp. in bats and their blood-feeding ectoparasites from South Africa and Swaziland. *PLoS One*. 2016;11:e0152077.
- Urushadze L, Bai Y, Osikowicz L, McKee C, Sidamonidze K, Putkaradze D, et al. Prevalence, diversity, and host associations of *Bartonella* strains in bats from Georgia (Caucasus). *PLoS Negl Trop Dis*. 2017;11:e0005428.
- Dietz C, Nill D, von Helversen O. Bats of Britain, Europe and Northwest Africa. London: A&C Black; 2009.
- Birtles RJ, Raoult D. Comparison of partial citrate synthase gene (*gltA*) sequences for phylogenetic analysis of *Bartonella* species. *Int J Syst Bacteriol*. 1996;46:891–7.
- Gutiérrez R, Morick D, Gross I, Winkler R, Abdeen Z, Harrus S. Bartonellae in domestic and stray cats from Israel: comparison of bacterial cultures and high-resolution melt real-time PCR as diagnostic methods. *Vector Borne Zoonotic Dis*. 2013;13:857–64.
- Tamura K, Nei M. Estimation of the number of nucleotide substitutions in the control region of mitochondrial DNA in humans and chimpanzees. *Mol Biol Evol*. 1993;10:512–5.

35. Norman AF, Regnery R, Jameson P, Greene C, Krause DC. Differentiation of *Bartonella*-like isoates at the species level by PCR-restriction fragment length polymorphism in the citrate synthase gene. *J Clin Microbiol*. 1995;33:1797–803.
36. Concannon R, Wynn-Owen K, Simpson VR, Birtles RJ. Molecular characterization of haemoparasites infecting bats (Microchiroptera) in Cornwall, UK. *Parasitology*. 2005;131:489–96.
37. Stuckey MJ, Boulouis HJ, Cliquet F, Picard-Meyer E, Servat A, Aréchiga-Ceballos N, et al. Potentially zoonotic *Bartonella* in bats from France and Spain. *Emerg Infect Dis*. 2017;23:539–41.
38. Bai Y, Kosoy M, Recuenco S, Alvarez D, Moran D, Turmelle A, et al. *Bartonella* spp. in bats, Guatemala. *Emerg Infect Dis*. 2011;17:1269–72.
39. Bai Y, Recuenco S, Gilbert AT, Osikowicz LM, Gómez J, Rupprecht C, et al. Prevalence and diversity of *Bartonella* spp. in bats in Peru. *Am J Trop Med Hyg*. 2012;87:518–23.
40. Kosoy M, Bai Y, Lynch T, Kuzmin IV, Niezgoda M, Franka R, et al. *Bartonella* spp. in bats, Kenya. *Emerg Infect Dis*. 2010;16:1875–81.
41. Lin EY, Tsigrelis C, Baddour LM, Lepidi H, Rolain JM, Patel R, et al. Candidatus *Bartonella mayotimonensis* and endocarditis. *Emerg Infect Dis*. 2010;16:500–3.
42. Lin JW, Hsu YM, Chomel BB, Lin LK, Pei JC, Wu SH, et al. Identification of novel *Bartonella* spp. in bats and evidence of Asian gray shrew as a new potential reservoir of *Bartonella*. *Vet Microbiol*. 2012;156:119–26.
43. Han HJ, Wen HL, Zhao L, Liu LM, Zhou CM, Qin XR, et al. Novel *Bartonella* species in insectivorous bats, Northern China. *PLoS One*. 2017;12:e0167915.
44. Lilley TM, Wilson CA, Bernard RF, Willcox EV, Vesterinen EJ, Webber QMR, et al. Molecular detection of Candidatus *Bartonella mayotimonensis* in North American bats. *Vector Borne Zoonotic Dis*. 2017;17:243–6.
45. Morse SF, Olival KJ, Kosoy M, Billeter S, Patterson BD, Dick CW, et al. Global distribution and genetic diversity of *Bartonella* in bat flies (Hippoboscoidea, Streblidae, Nycteribiidae). *Infect Genet Evol*. 2012;12:1717–23.
46. Davoust B, Marié JL, Dahmani M, Berenger JM, Bompar JM, Blanchet D, et al. Evidence of *Bartonella* spp. in blood and ticks (*Ornithodoros hasei*) of bats, in French Guiana. *Vector Borne Zoonotic Dis*. 2016;16:516–9.
47. Cicuttin GL, De Salvo MN, La Rosa I, Dohmen FEG. *Neorickettsia risticii*, *Rickettsia* sp. and *Bartonella* sp. in *Tadarida brasiliensis* bats from Buenos Aires, Argentina. *Comp Immunol Microbiol Infect Dis*. 2017;52:1–5.
48. McKee CD, Hayman DTS, Kosoy MY, Webb CT. Phylogenetic and geographic patterns of *Bartonella* host shifts among bat species. *Infect Genet Evol*. 2016;44:382–94.
49. Sándor AD, Földvári M, Krawczyk AI, Sprong H, Corduneanu A, Barti L, et al. Eco-epidemiology of novel *Bartonella* genotypes from parasitic flies of insectivorous bats. *Microb Ecol*. 2018; <https://doi.org/10.1007/s00248-018-1195-z>.
50. Veikkolainen V, Vesterinen EJ, Lilley TM, Pulliainen AT. Bats as reservoir hosts of human bacterial pathogen, *Bartonella mayotimonensis*. *Emerg Infect Dis*. 2014;20:960–7.
51. Lilley TM, Veikkolainen V, Pulliainen AT. Molecular detection of Candidatus *Bartonella hemsundetiensis* in bats. *Vector Borne Zoonotic Dis*. 2015;15:706–8.
52. Anh PH, Van Cuong N, Son NT, Tue NT, Kosoy M, Woolhouse MEJ, et al. Diversity of *Bartonella* spp. in bats, southern Vietnam. *Emerg Infect Dis*. 2015;21:1266–7.
53. Bai Y, Hayman DTS, McKee CD, Kosoy MY. Classification of *Bartonella* strains associated with straw-colored fruit bats (*Eidolon helvum*) across Africa using a multi-locus sequence typing platform. *PLoS Negl Trop Dis*. 2015;9:e0003478.
54. Reeves WK, Loftis AD, Gore JA, Dasch GA. Molecular evidence for novel *Bartonella* species in *Trichobius major* (Diptera : Streblidae) and *Cimex adjunctus* (Hemiptera : Cimicidae) from two southeastern bat caves, USA. *J Vector Ecol*. 2005;30:339–4.
55. Reeves WK, Beck J, Orlova MV, Daly JL, Pippin K, Revan F, et al. Ecology of bats, their ectoparasites, and associated pathogens on Saint Kitts Island. *J Med Entomol*. 2016;53(5):1218–25.
56. Felsenstein J. Confidence limits on phylogenies: an approach using the bootstrap. *Evolution*. 1985;39:783–91.
57. Kumar S, Stecher G, Tamura K. MEGA7: Molecular Evolutionary Genetics Analysis version 7.0 for bigger datasets. *Mol Biol Evol*. 2016;33:1870–4.

Ready to submit your research? Choose BMC and benefit from:

- fast, convenient online submission
- thorough peer review by experienced researchers in your field
- rapid publication on acceptance
- support for research data, including large and complex data types
- gold Open Access which fosters wider collaboration and increased citations
- maximum visibility for your research: over 100M website views per year

At BMC, research is always in progress.

Learn more biomedcentral.com/submissions

