



Since January 2020 Elsevier has created a COVID-19 resource centre with free information in English and Mandarin on the novel coronavirus COVID-19. The COVID-19 resource centre is hosted on Elsevier Connect, the company's public news and information website.

Elsevier hereby grants permission to make all its COVID-19-related research that is available on the COVID-19 resource centre - including this research content - immediately available in PubMed Central and other publicly funded repositories, such as the WHO COVID database with rights for unrestricted research re-use and analyses in any form or by any means with acknowledgement of the original source. These permissions are granted for free by Elsevier for as long as the COVID-19 resource centre remains active.



Review

Post-viral mental health sequelae in infected persons associated with COVID-19 and previous epidemics and pandemics: Systematic review and meta-analysis of prevalence estimates



Simeon Joel Zürcher^{a,b,*}, Céline Banzer^a, Christine Adamus^{a,b}, Anja I. Lehmann^c, Dirk Richter^{a,b,d}, Philipp Kerksieck^c

^a Center for Psychiatric Rehabilitation, Universitäre Psychiatrische Dienste Bern (UPD), Bern, Switzerland

^b University Hospital of Psychiatry and Psychotherapy, University of Bern, Bern, Switzerland

^c Epidemiology, Biostatistics and Prevention Institute, Public and Organizational Health, University of Zurich, Zurich, Switzerland

^d Department of Health Professions, Bern University of Applied Sciences, Bern, Switzerland

ARTICLE INFO

Article history:

Received 6 October 2021

Received in revised form 4 March 2022

Accepted 13 April 2022

Keywords:

COVID-19

Long-COVID

Mental health

Post-viral sequelae

Prevalence

ABSTRACT

Aims: Post-viral mental health problems (MHP) in COVID-19 patients and survivors were anticipated already during early stages of this pandemic. We aimed to synthesize the prevalence of the anxiety, depression, post-traumatic and general distress domain associated with virus epidemics since 2002.

Methods: In this systematic review and meta-analysis, we searched PubMed, PsycINFO, and Embase from 2002 to April 14, 2021 for peer-reviewed studies reporting prevalence of MHP in adults with laboratory-confirmed or suspected SARS-CoV-1, H1N1, MERS-CoV, H7N9, Ebolavirus, or SARS-CoV-2 infection. We included studies that assessed post-viral MHP with validated and frequently used scales. A three-level random-effects meta-analysis for dependent effect sizes was conducted to account for multiple outcome reporting. We pooled MHP across all domains and separately by severity (above mild or moderate-to-severe) and by acute (one month), ongoing (one to three months), and post-illness stages (longer than three months). A meta-regression was conducted to test for moderating effects, particularly for exploring estimate differences between SARS-CoV-2 and previous pandemics and epidemics. PROSPERO registration: CRD42020194535.

Results: We identified 59 studies including between 14 and 1002 participants and providing 187 prevalence estimates. MHP, in general, decreased from acute to post-illness from 46.3% to 38.8% and for mild and moderate-to-severe from 22.3% to 18.8%, respectively. We found no evidence of moderating effects except for non-random sampling and H1N1 showing higher prevalence. There was a non-significant trend towards lower MHP for SARS-CoV-2 compared to previous epidemics.

Conclusions: MHP prevalence estimates decreased over time but were still on a substantial level at post-illness. Post-viral mental health problems caused by SARS-CoV-2 could have been expected much earlier, given the previous post-viral sequelae.

© 2022 Published by Elsevier Ltd on behalf of King Saud Bin Abdulaziz University for Health Sciences.

CC-BY-NC-ND 4.0

Contents

Introduction	600
Material and methods	600
Search strategy and selection criteria	600
Data extraction and coding	601
Appraisal of the evidence	601
Data analysis	601

* Correspondence to: Sägestrasse 75, 3098 K niz, Switzerland.

E-mail address: simeon.zuercher@upd.unibe.ch (S.J. Z rcher).

Results	601
Study characteristics	601
Pooled prevalence estimates of mental health problems	602
Moderators of mental health problems	602
Discussion	604
Strengths and limitations	605
Conclusion	606
CRedit authorship contribution statement	606
Funding	606
Ethical approval	606
.	607
Acknowledgements	607
Competing interests	607
Appendix A Supporting information	607
References	607

Introduction

A large body of evidence from COVID-19 and earlier epidemics such as SARS-CoV-1 and Ebola raised strong concerns regarding acute and long-lasting neurological and psychological problems in infected individuals, now described as Long Covid or Post-acute Covid Syndrome [1–6]. In COVID-19, this issue was largely underestimated or neglected since public health, and health care priorities focus on safety and survival rather than on mental health care. Even though the importance of acute and long-lasting mental health issues as a consequence of virus infection were highlighted in the context of previous epidemics [3,7,8]. Although epidemics in the last 20 years like Ebola or COVID-19 differ in many regards like virus characteristics, spread, cultural or socioeconomic environment, they are likely to show important similarities in their impact on mental health in infected individuals or survivors [3,7,9]. It is known that virus infections like Ebola or Coronaviruses can affect the CNS and cause neuropsychiatric syndromes [10,11]. For instance, it is assumed that pathophysiological mechanisms including immune response, vascular damage, detrimental effects of critical illness and side effects from treatments may increase the risk for neurodegeneration in COVID-19 [10]. Furthermore, stressors including treatment-related, sociodemographic and environmental circumstances can negatively impact mental health across different epidemics in this population. Infected individuals may suffer from life-threatening complications with uncertain survival or recovery, social isolation, and reduced access to social support, all of which can lead to loneliness and other mental health issues [12,13]. Affected individuals may face compromised access to health care due to escalating case numbers and overwhelmed health services. Post-illness survivors may need to cope with ongoing symptoms such as reduced physical functioning, fatigue, social and economic issues such as stigmatization with a refusal of services, and reduced working abilities [1,3,8,14]. Mental health issues may also be aggravated by factors like a history of pre-existing mental health problems [15].

Within the patient communities affected by post-viral health issues, psychiatric and psychological outcomes are regarded very critically. Similar to communities affected by chronic fatigue syndrome/myalgic encephalomyelitis, these patient initiatives stress biological causal mechanisms over psychological or even social mechanisms [16,17]. As there are no definitive diagnostic criteria for post-viral health issues such as Long Covid, we have decided to remain neutral in terms of terminology [18]. Therefore, in the remainder of this paper, we speak of post-viral mental health problems (MHP) rather than symptoms or mental disorders.

Aside from more recent evidence from COVID-19, studies from earlier epidemics are a valuable source of information to inform

mental health care. Estimating the magnitude of long-lasting mental and physical problems, including mechanisms and risk factors, is critical to estimate individual, societal and economic costs and facilitate treatment and rehabilitation planning [19]. The cumulating evidence of potential long-lasting health sequelae associated with Sars-CoV-2 infection is likely to become an important public health issue.

To the best of our knowledge there has been no systematic evidence synthesis published, including patients and survivors of major infectious disease epidemics in the last two decades that include all major virus endemics in the last 20 years. In the present meta-analysis, we (1) aimed to overcome this research gap and estimate the pooled prevalence of anxiety, depression, post-traumatic stress, general distress and overall post-viral MHP assessed with validated and widely used scales in suspected and laboratory-confirmed patients and survivors. By ‘post-viral’ we mean MHP including problems that last longer than the acute illness phase (see details in the Methods section). Furthermore, we (2) conducted a meta-regression to investigate potential moderating effects on the overall post-viral MHP prevalence, in particular whether SARS-CoV-2 is different in this regard to previous epidemics and pandemics.

Material and methods

The study was registered with PROSPERO (CRD42020194535) and is reported in adherence to PRISMA guidelines [20]. There were some protocol deviations. First, we focused on patients/survivors and excluded original studies on the general population and health-care workers since numerous systematic reviews already covered these populations. Second, we pooled prevalence estimates by domain as well as jointly (see below) rather than by assessment instruments since there was insufficient data to conduct pooling for some instruments. Third, we explicitly looked into differences between SARS-Cov-2 and previous epidemics and pandemics.

Search strategy and selection criteria

We searched PubMed, PsycINFO, Embase and Google Scholar for peer-reviewed studies in the range from January 1, 2002 to April 14, 2021. Reference lists of all eligible studies and topic relevant reviews were screened to identify studies that were potentially missed. We used a broad set of keywords (Tables A.1/A.2) related to epidemics of interest and assessment instruments. For the latter, we included validated instruments that were used frequently in original studies included based on a similar review conducted in 2020 [7].

Inclusion criteria were: (a) peer-reviewed articles using a quantitative methodology; (b) published in the languages Dutch, English,

French, German or Spanish; (c) providing MHP prevalence estimates assessed by any versions of the impact of event scale (IES), the Center for Epidemiologic Studies Depression Scale (CES-D), the Patient Health Questionnaire/Generalized Anxiety Disorder scale (PHQ/GAD), the Hospital Anxiety and Depression Scale (HADS), and the General Health Questionnaire (GHQ); (d) adult patients/survivors (≥ 18 years) with suspected or confirmed severe acute respiratory syndrome coronavirus 1 (SARS-CoV-1), swine flu (H1N1), Middle East respiratory syndrome coronavirus (MERS-CoV), avian influenza (H7N9), Ebolavirus, and severe acute respiratory syndrome coronavirus 2 (SARS-CoV-2) infection. Exclusion criteria were: (a) subgroups of patients/survivors including psychiatric patients, marginalized individuals, people with chronic physical conditions; (b) articles not providing prevalence (Table A.3).

After removing duplicates electronically and manually, two authors (SJZ, PK) identified studies meeting the inclusion criteria based on title and abstracts independently and blinded to each other's decisions. Any study that met the inclusion criteria was inspected independently and blinded in full-text by two authors (SJZ, CA, CB, PK) for closer inspection. Agreement on full-text eligibility was 90.3% (Cohens Kappa: 0.79 [95% CI 0.69–0.90]). Discrepancies were resolved through discussion.

Data extraction and coding

A standardized form was used to extract study data and quality (Table A.4). Data was extracted and checked by two authors for each included study (SJZ, CA, CB, PK). Variables extracted for descriptive and/or moderator analyses were first authors, year of publication, country, world-region, study design, sampling method, response rate, epidemic, sex ratio, mean/median age, proportion with a history of mental health conditions, proportion in need of intensive care unit, proportion of health care workers, proportion with higher education, treatment received, and months follow-up defined as the time elapsed since treatment or discharge coded as acute (≤ 1 month), ongoing (1–3 months), or post-illness (> 3 months) based on a recently proposed recording system [21].

The outcome of interest was the prevalence defined as the number of positive classified cases by assessment instrument divided by sample size. We calculated the overall MHP prevalence excluding the GHQ as a not domain-specific measure that assesses new occurring distress-phenomena and carry out normal functions. MHP by domains included anxiety (GAD and HADS scale), depression (PHQ, CES-D, HADS-D scale), post-traumatic stress (IES-Scale), general distress (GHQ scale), and somatization (PHQ-15 Scale). Prevalence values were further stratified by follow-up timepoint and severity defined as at least mild symptoms or at least moderate-to-severe symptoms cut-off by assessment instruments (Table A.5).

Appraisal of the evidence

Quality was appraised independently by SJZ, CA, CB, and PK using eight items of the nine criteria version of the Joanna Briggs Institute Critical Appraisal Checklist for Studies Reporting Prevalence Data [22]. Each item was rated with yes, no, or unclear and covered sampling frame, sampling/recruitment, sample size, subjects and setting description, coverage, standardized procedures, transparent statistical analyses, and response rate. To the best of our knowledge, there is no published recommendation of weighting and scoring [22]. We therefore binarized each quality item into yes/no (no or unclear) to calculate the quality achieved in percent (possible range from zero to eight out of a maximum of eight). We classified at least seven points ($> 87\%$) as good to excellent, five to six (63–75%) as

moderate, less than four ($\leq 50\%$) as poor. Discrepancies were resolved through discussion. Average inter-rater agreement across all items ranged from 80.0% to 96.7% (Cohens Kappa; 0.75 [95% CI 0.58–0.92] to 0.93 [95% CI 0.83–1.0]).

Data analysis

We conducted a random-effects meta-analysis for dependent and non-dependent estimates to pool the point prevalence for the overall MHP and for the domain's anxiety, depression, post-traumatic stress, general distress, and somatization separately. Furthermore, all prevalence estimates were stratified by severity (Table A.5) and by follow-up time including acute, ongoing and post-illness stage. In the case of dependency for studies reporting multiple prevalence estimates in the same participants, a three-level mixed-effects model was fitted (taking within-study variation into account) [23]. Freeman-Tukey double-arcsine transformation was used to pool estimates [24]. We used I^2 to determine heterogeneity for analysis in non-dependent prevalence estimates. In dependent estimates, the distribution of total variance (%) attributed to between and within-study variance was estimated [25]. Sensitivity analyses were performed by the investigation of influential estimates using DFBETAS and Cook's distance [26].

We conducted a meta-regression on the overall at least mild and moderate-to-severe MHP prevalence estimates using follow-up timepoint, sex, age, education, history of a mental health condition, health-care workers, duration of hospitalization, intensive care treatment, type of treatment, response rate, sampling method, world region, and epidemic type as moderators. Meta-regression was conducted on arcsine transformed proportions due to better statistical properties as compared to untransformed proportions. All moderators were tested individually while including follow-up timepoint in months. A model including all moderators jointly was not possible due to the substantial missingness of moderators. Predicted prevalence estimates were calculated for each epidemic type to allow a comparison across epidemics. Statistical analyses were conducted in R (version 4.0.3) using metafor [26].

Results

Study characteristics

The systematic search yielded 3304 articles, of which 59 (61 samples) were included (Fig. 1). The number of individuals ranged from 14 to 1002, with a proportion of females ranging from 22% to 79% and mean/median age from 32 to 72 years. A total of 187 prevalence rates for mild and moderate-to-severe post-viral MHP prevalence estimates were reported, with one study that assessed samples in different countries [27] and two that had overlapping samples [28,29]. Studies covered China ($n = 20$), Asia excluding China ($n = 14$), Europe ($n = 17$), Africa ($n = 6$), and America ($n = 3$). 42 (71%) studies investigated SARS-CoV-2, eight (14%) SARS-CoV-1, four (7%) MERS-CoV, four (7%) Ebolavirus, and one (2%) H1N1, while no study covered H7N9 (Table 1). Time elapsed since treatment/data collection ranged from 0 to about 40 months. Studies rarely reported complete data on all descriptive or moderator variables. While female/male ratio was provided regularly ($> 98\%$), other variables such as (history of a psychiatric condition, percent health care workers) were not regularly provided. Overall, 18 studies showed an excellent, 15 studies a moderate and 26 a poor quality on the appraisal scale (Table 1 and Fig. A.1).

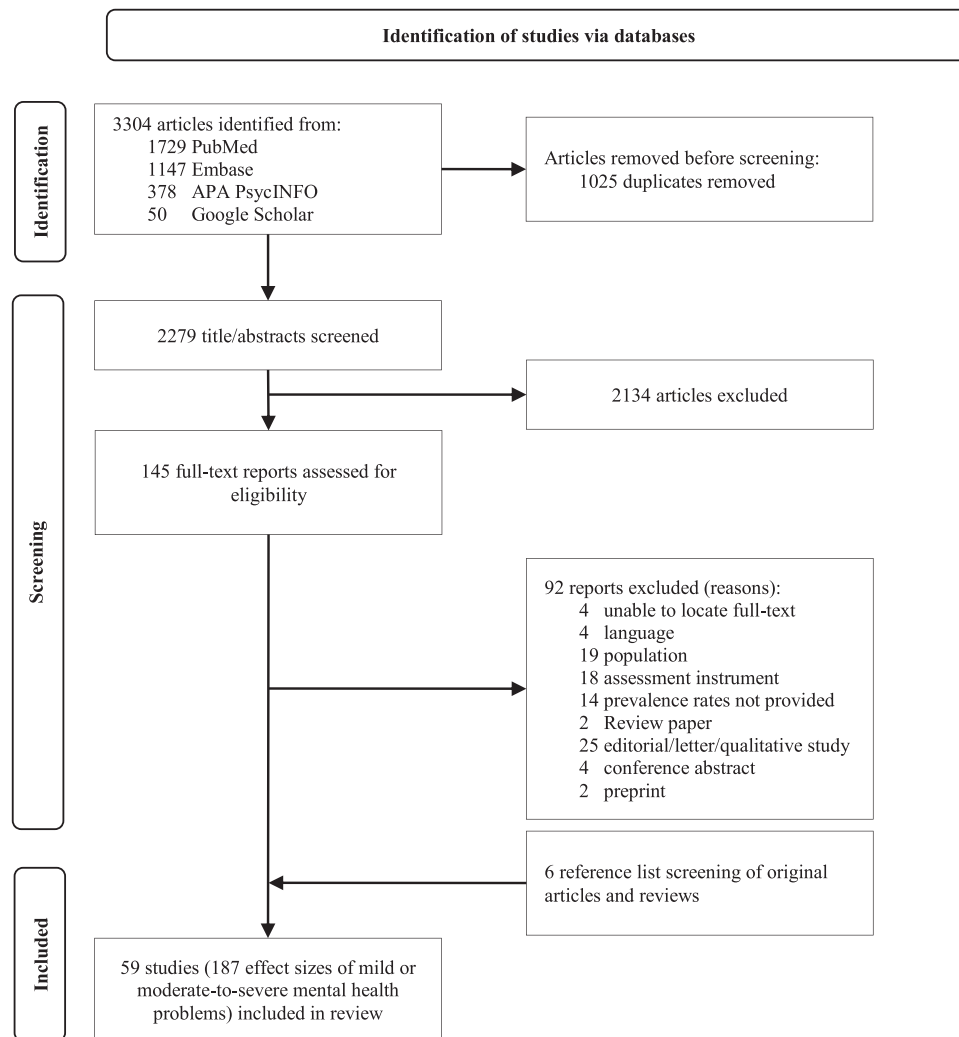


Fig. 1. PRISMA flow chart of included studies reporting on mental health problems in virus disease patients and survivors.

Pooled prevalence estimates of mental health problems

Pooled prevalence of mild or moderate-to-severe post-viral MHP including all domains jointly and separately at acute, ongoing and post-illness follow-up timepoint are shown in Fig. 2 and Table 2. Original studies contributing to summary estimates are shown in the Supplementary material (Table A.6).

Overall mild MHP prevalence was highest in the acute stage with 46.3% and lower at the ongoing and post-illness stage with 35.5% and 38.8%, respectively. Moderate-to-severe MHP estimates were 22.3%, 17.3% and 18.8% for the acute, ongoing, and post-illness stage, respectively. Comparing prevalence estimates between time-points, showed a significant decrease in at least mild and moderate-to-severe MHP between acute and post-illness stage. We found no significant difference between the estimate comparing the acute and ongoing stage (Table A.7).

Although not uniformly, domain-specific estimates for at least mild or moderate-to-severe MHP showed a lower prevalence at post-illness stage as compared to acute stage (Fig. 2 and Table 2). For instance, moderate-to-severe anxiety was 19.2% at acute, 14.1% for ongoing, and 12.1% for post-illness. Pooling estimates for somatization, and general distress (acute, post-illness), was not possible since only single prevalence estimates were available (Table A.6). To emphasize, the estimates for mild or moderate post-traumatic stress

were based on very little data, while the majority of estimators showed substantial heterogeneity with a significant part of variance that could be attributed to between and/or within-study heterogeneity (Table 2). Sensitivity analyses did not change the interpretation.

Moderators of mental health problems

The meta-regression to test moderating effects on mild and moderate-to-severe overall MHP prevalence including follow-up time in months is shown in Table A.7. We found no evidence of moderating effects for sex, age, education, history of a psychologic condition, health care workers, duration of hospitalization, treatment in ICU, type of treatment, response rate, and world-region. In contrast, we found some evidence for lower mild MHP prevalence in random vs. non-random sampling methods and a higher prevalence of moderate-to-severe MHP in H1N1 vs. SARS-CoV-2. However, the contrast between H1N1 and SARS-CoV-2 should be interpreted cautiously since it is based on very little data. Fig. 3. shows the predicted moderate-to-severe MHP estimates for the different epidemics (excluding H1N1 since too little data) across the different follow-up timepoints. Generally, estimates show large confidence intervals and seem to differ more in the acute and ongoing phase but lie in a more similar range in the post-illness phase across

Table 1
 Characteristics of included studies reporting mental health problem prevalence estimates in virus disease patients and survivors (n = 59).

Author (year)	Country	Virus type	Design	Sampling method ^a	Female (%)	Age ^b	Sample size	Outcomes	Quality ^c
Alkinci and Basar (2021) [40]	Turkey	SARS-CoV-2	cross-sectional	non-random	41.3	46.3	189	HADS anxiety; HADS depression	2/8 (25%)
Bah et al. (2020) [41]	Sierra Leone	Ebolavirus	cross-sectional	non-random	50.3		197	HADS anxiety; HADS depression	3/8 (37.5%)
Bellan et al. (2021) [42]	Italy	SARS-CoV-2	longitudinal	random	40.3	61	238	IES-R	8/8 (100%)
Bonazza et al. (2020) [43]	Italy	SARS-CoV-2	cross-sectional	random	31.8	59	184–261	HADS anxiety; HADS depression; IES-R	6/8 (75%)
Chen et al. (2021) [44]	China	SARS-CoV-2	cross-sectional	non-random	57.5	39.4	898	GAD-7; PHQ-9	4/8 (50%)
Chen et al. (2020) [45]	China	SARS-CoV-2	cross-sectional	random	61.3	50	31	GAD-7; PHQ-9	2/8 (25%)
Cheng et al. (2004) [46]	China	SARS-CoV-1	cross-sectional	non-random	66	37.1	100	GHQ-28	4/8 (50%)
Chieffo et al. (2020) [47]	Italy	SARS-CoV-2	longitudinal	non-random	44.1	54	14–33	IES-R	3/8 (37.5%)
D’Cruz et al. (2021) [48]	UK	SARS-CoV-2	longitudinal	random	37.8	58.7	111–113	GAD-7; PHQ-9	7/8 (87.5%)
Etard et al. (2017) [49]	Guinea	Ebolavirus	longitudinal	random	54.2	47.2	472	CES-D	8/8 (100%)
Guo et al. (2020) [50]	China	SARS-CoV-2	cross-sectional	non-random	42.7	42.5	103	GAD-7; PHQ-9	3/8 (37.5%)
He et al. (2021) [51]	China	SARS-CoV-2	cross-sectional	non-random	50.6	56	65	GAD-7; PHQ-9	4/8 (50%)
Heyns et al. (2021) [52]	Belgium	SARS-CoV-2	cross-sectional	random	50.4	72	47	HADS anxiety; HADS depression	7/8 (87.5%)
Horn et al. (2020) [53]	France	SARS-CoV-2	longitudinal	random	43.9	53	179	IES-6	7/8 (87.5%)
Hu et al. (2020) [54]	China	SARS-CoV-2	cross-sectional	non-random	49.4	48.8	85	GAD-7; PHQ-9	3/8 (37.5%)
Islam et al. (2021) [55]	Bangladesh	SARS-CoV-2	cross-sectional	non-random	42.1	34.7	1002	PHQ-9	4/8 (50%)
Jeong et al. (2016) [56]	South Korea	MERS-CoV	cross-sectional	non-random	50	52.3	36	GAD-7	4/8 (50%)
Jeong et al. (2020) [57]	South Korea	SARS-CoV-2	cross-sectional	non-random	60.3	37.8	126	HADS anxiety; HADS depression	4/8 (50%)
Ju et al. (2021) [58]	China	SARS-CoV-2	longitudinal	random	46.3	39	95	GAD-7; PHQ-9	5/8 (62.5%)
Kandeger et al. (2020) [59]	Turkey	SARS-CoV-2	cross-sectional	random	44	36.7	84	HADS anxiety; HADS depression	5/8 (62.5%)
Kang et al. (2021) [60]	South Korea	SARS-CoV-2	cross-sectional	random	52.3	31.6	107	GAD-7; PHQ-9	6/8 (75%)
Keita et al. (2017) [61]	Guinea	Ebolavirus	longitudinal	random	53.9	31.6	256	CES-D	7/8 (87.5%)
Kim et al. (2018) [62]	South Korea	MERS-CoV	cross-sectional	random	63	41.1	27	PHQ-9	7/8 (87.5%)
Kim et al. (2020) [63]	South Korea	SARS-CoV-2	intervention	random	41.1	45	33	HADS anxiety; HADS depression	5/8 (62.5%)
Kong et al. (2020) [64]	China	SARS-CoV-2	intervention	random	51.4	50	144	HADS anxiety; HADS depression	4/8 (50%)
Kwek et al. (2006) [65]	Singapore	SARS-CoV-1	cross-sectional	random	79.4	34.8	63	HADS anxiety; HADS depression; IES	4/8 (50%)
Lam et al. (2009) [66]	China	SARS-CoV-1	cross-sectional	random	70.4	43.3	170	HADS totalscale	4/8 (50%)
Lee et al. (2007) [67]	China	SARS-CoV-1	cross-sectional	non-random	63.5	96	96	GHQ-12	3/8 (37.5%)
Lee et al. (2019) [68]	South Korea	MERS-CoV	longitudinal	random	38.5	49.7	52	IES-R; PHQ-9	7/8 (87.5%)
Li et al. (2020) [69]	China	SARS-CoV-2	cross-sectional	non-random	45.5	51.4	99	HADS anxiety; HADS depression	2/8 (25%)
Luyt et al. (2012) [70]	France	H1N1	longitudinal	random	51.4	39.9	37	HADS anxiety; HADS depression; IES	7/8 (87.5%)
Ma et al. (2020) [71]	China	SARS-CoV-2	cross-sectional	non-random	51.9	50.4	770	PHQ-9	5/8 (62.5%)
Mak et al. (2009) [72]	China	SARS-CoV-1	longitudinal	random	62.2	41.1	90	HADS anxiety; HADS depression	8/8 (100%)
Martillo et al. (2021) [73]	USA	SARS-CoV-2	longitudinal	random	22.2	53.9	42	PHQ-9	6/8 (75%)
Mazza et al. (2020) [74]	Italy	SARS-CoV-2	cross-sectional	non-random	34.3	57.8	102–300	IES-R	4/8 (50%)
Mina et al. (2021) [75]	Bangladesh	SARS-CoV-2	cross-sectional	non-random	28	39.4	145	GAD-7; PHQ-9	2/8 (25%)
Morin et al. (2021) [76]	France	SARS-CoV-2	cross-sectional	random	38.4	56.9	169	HADS anxiety	8/8 (100%)
Mowla et al. (2021) [77]	Iran	SARS-CoV-2	cross-sectional	random	35	67.4	69	GHQ-28	6/8 (75%)
Olanipekun et al. (2021) [78]	USA	SARS-CoV-2	cross-sectional	random	35.6	52.5	73	PHQ-9	7/8 (87.5%)
Park et al. (2020) [79]	South Korea	MERS-CoV	longitudinal	random	38.1	49.2	63	GAD-7; IES-R; PHQ-9	6/8 (75%)
Parke et al. (2021) [80]	USA	SARS-CoV-2	longitudinal	random	36	59	58	HADS anxiety; HADS depression	6/8 (75%)
Paz et al. (2020) [81]	Ecuador	SARS-CoV-2	cross-sectional	non-random	51.9	37	759	GAD-7; PHQ-9	4/8 (50%)
Poyraz et al. (2021) [82]	Turkey	SARS-CoV-2	cross-sectional	random	49.8	39.7	284	HADS anxiety; HADS depression; IES-R	5/8 (62.5%)
Raman et al. (2021) [83]	UK	SARS-CoV-2	longitudinal	random	41.4	55.4	57	GAD-7; PHQ-9	7/8 (87.5%)
Rass et al. (2021) [84]	Austria	SARS-CoV-2	longitudinal	random	39	56	98	HADS anxiety; HADS depression	7/8 (87.5%)
Sahan et al. (2021) [85]	Turkey	SARS-CoV-2	cross-sectional	random	49.1	55	281	HADS anxiety; HADS depression	8/8 (100%)
Samrah et al. (2020) [86]	Jordan	SARS-CoV-2	cross-sectional	random	59.1	35.8	66	PHQ-9	8/8 (100%)
Secor et al. (2020) [87]	Guinea, Liberia, Sierra Leone	Ebolavirus	cross-sectional	random	57.8	37.6	198–751	GAD-7; PHQ-9	5/8 (62.5%)
Sheng et al. (2005) [88]	China	SARS-CoV-1	cross-sectional	non-random	65.7	37.6	102	GHQ-28	3/8 (37.5%)
Speth et al. (2020) [89]	Switzerland	SARS-CoV-2	cross-sectional	random	54.4	44.6	114	GAD-2; PHQ-2	5/8 (62.5%)
van den Borst et al. (2020) [90]	Netherlands	SARS-CoV-2	longitudinal	random	40.3	59	124	HADS anxiety; HADS depression; IES-R	7/8 (87.5%)
Wang et al. (2021) [91]	China	SARS-CoV-2	cross-sectional	random	64.6	460	GAD-7; PHQ-15; PHQ-9	6/8 (75%)	
Wu et al. (2005) [92]	China	SARS-CoV-1	cross-sectional	random	56.9	41.5	195	HADS anxiety; HADS depression; IES-R	7/8 (87.5%)
Wu et al. (2005) [93]	China	SARS-CoV-1	cross-sectional	non-random	56	41.8	131	HADS anxiety; HADS depression; IES-R	4/8 (50%)
Xu et al. (2021) [94]	China	SARS-CoV-2	cross-sectional	non-random	43	41.7	121	CES-D	4/8 (50%)

(continued on next page)

Table 1 (continued)

Author (year)	Country	Virus type	Design	Sampling method ^b	Female (%)	Age ^b	Sample size	Outcomes	Quality ^c
Yadav et al. (2021) [95]	India	SARS-CoV-2	cross-sectional	non-random	27	42.9	100	GAD-7; PHQ-9	2/8 (25%)
Zarghami et al. (2020) [96]	Iran	SARS-CoV-2	cross-sectional	random	61	40.3	30–52	GAD-7; PHQ-9	5/8 (62.5%)
Zhang et al. (2020) [97]	China	SARS-CoV-2	cross-sectional	non-random	50	42.5	30	GAD-7; PHQ-9	4/8 (50%)
Zhang et al. (2020) [98]	China	SARS-CoV-2	cross-sectional	non-random	41.6		296	HADS anxiety; HADS depression	4/8 (50%)

PHQ-9 = Patient Health Questionnaire Depression Scale. GAD-7 = Generalized Anxiety Disorder Scale. GHQ-12 = General Health Questionnaire - short form. GHQ-28 = General Health Questionnaire. HADS anxiety=Hospital Anxiety and Depression Scale - anxiety subscale. HADS depression = Hospital Anxiety and Depression Scale - total-scale. IES-6 = Impact of Event Scale - short form. IES-R = Impact of Event Scale-Revised. IES = Impact of Event Scale. PHQ-15 = Patient Health Questionnaire somatisation module. PHQ-2 = Patient Health Questionnaire Depression module - short form. PHQ-9 = Patient Health Questionnaire Depression module.

^a Random sampling (random or complete sampling strategies where all eligible participants were attempted to be included), non-random sampling (i.e., convenience, snow-ball, or unknown sampling strategy).

^b Refers to mean or median age as provided by original studies.

^c No. of quality items that were answered with yes and percent of full quality complied

epidemics. Descriptively, MHP estimates were somewhat lower for SARS-CoV-2 as compared to the other epidemics.

Discussion

A systematic review and meta-analysis was conducted that explored the prevalence estimates of acute, ongoing and post-acute mental health sequelae after infection with SARS-1, MERS, Ebola, H1N1 or SARS-Cov-2 viruses. We included 59 studies providing a total of 187 prevalence estimates in the analysis. A high prevalence of overall and domain-specific MHP in the acute, ongoing and the post-illness stage was identified. Acute infections were associated with higher prevalence estimates of MHP than post-illness. This, however, was not found uniformly across all time-points and mental health problem severity groups.

The overall picture suggests that any mild and moderate-to-severe psychological conditions will be experienced by 39% and 19% of infection survivors for longer than 12 weeks. Likewise, anxiety, depression, and post-traumatic stress, and general distress were substantial beyond the acute phase. Combined, these results show that a considerable proportion of infection survivors will suffer from mental health problems severely for a longer time.

Our results support meta-studies on earlier epidemic outbreaks. A meta-analysis with Chinese publications on SARS-1 found a decrease of mental health problems over time but reported at 12 months post-hospital discharge a level of average distress above population norms [30]. A systematic review on post-Ebola virus disease studies gathered publications that found considerable depression prevalence and other psychological sequelae in Ebola survivors [31].

Results reported in our study are based on studies covering multiple epidemics and provide additional information to earlier meta-analytical results referring to COVID-19. A not yet peer-reviewed study on various long-term sequelae of COVID-19 reported a prevalence of 12% for anxiety and 13% for depression [32]. It is, however, unclear at what time this was assessed. A meta-analysis on early neurological and neuropsychiatric studies (published until July 2020) reported point prevalence values for anxiety of 15.9% and of 23.0% for depression [1]. A recent large-scale analysis of more than 200,000 electronic health records from the United States found an overall incidence of anxiety and depression diagnoses of 22% within 180 days after Covid-19 [33]. Our results similarly fall in that range. Taken together, we assume that roughly 20% of infected persons develop considerable mental health problems in the weeks and months after an epidemic viral infection. However, milder mental health conditions are somewhat more prevalent and can potentially have detrimental effects as well.

The moderator analysis and the just reported recent research results have shown that post-illness COVID-19 mental health sequelae are not fundamentally different compared to consequences of earlier virus epidemics. While the information on the post-viral health detriments was available from earlier infection outbreaks, it is somewhat astonishing that the risks of longer-term conditions were overlooked in the early days of the pandemic and that it took quite some time to receive the science and media attention it now has [34].

The moderator analysis has also shown effects for the time point and the sampling method in particular. This suggests that methodological details and study quality are crucial for assessing the contribution of single studies. In general, and as reported from earlier epidemiological studies on mental health effects of epidemics [35], the study quality has to be evaluated as mixed. While about 56% reached a moderate to high study quality, about 44% showed a poor quality. Studies frequently suffered from non-transparency regarding sampling frame, recruitment, sample size and provided only a poor description of the study sample and setting and showed low

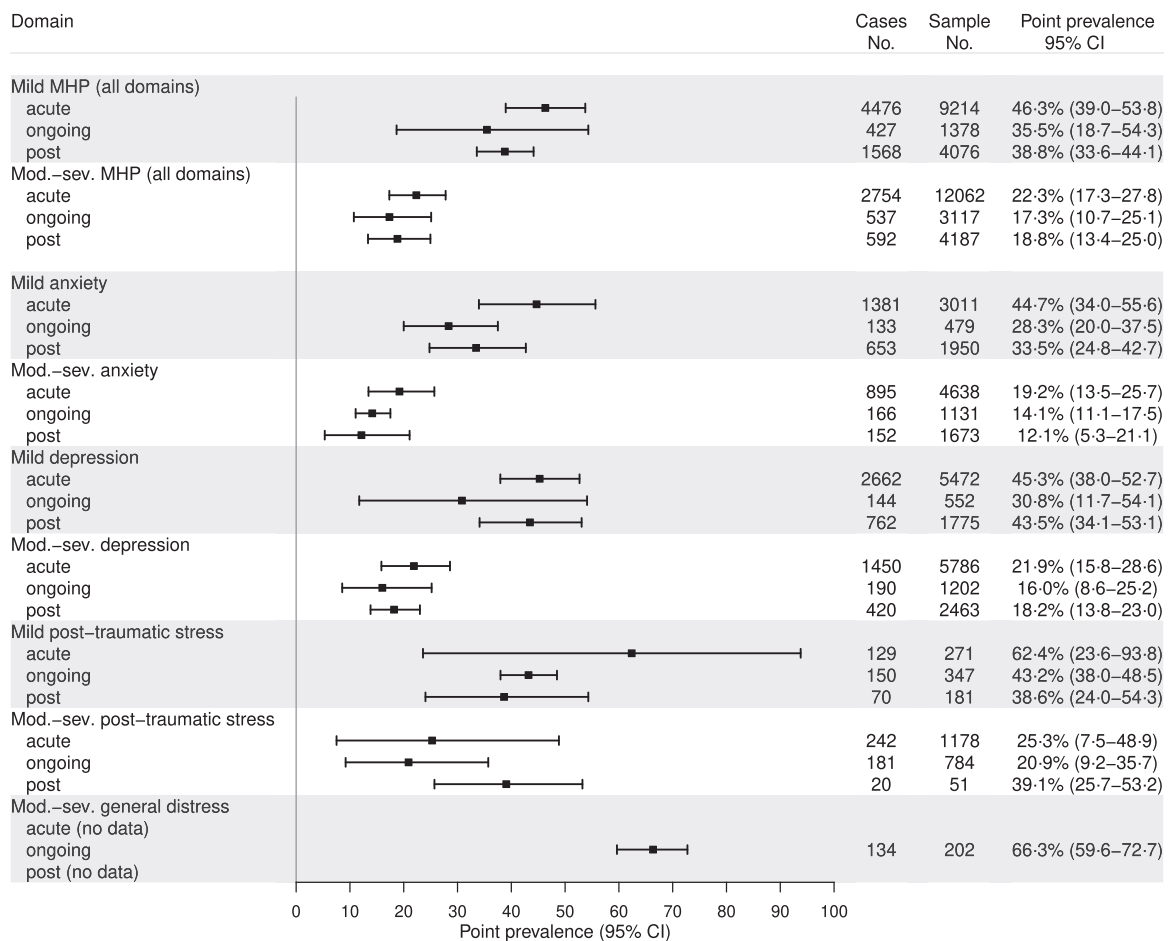


Fig. 2. MHP = mental health problems, Mod.-sev. = moderate-to-severe. Meta-analysis was conducted only where at least two effect sizes were available. The analysis was conducted with a random effects meta-analysis in the case of independent effect sizes or a three-level random effects model in the case of dependent effect sizes. We used double arcsine transformation for variance stabilization. Displayed are the back-transformed estimates in percent.

response rates. Furthermore, at least one third showed an unclear or insufficient coverage of the identified sample. In contrast, studies predominantly assessed MHP in a standardized way and clearly described how prevalence was calculated.

Our findings highlight the importance of mental health interventions generally, but at an acute stage of infection specifically. First, clear information about the disease (e.g., infection rates, quarantine, vaccination) is not only important to address uncertainty and fear but also to improve mental health literacy within the population [36]. Therefore, public communication should also integrate virus- and pandemic-related mental health issues. Furthermore, multidisciplinary mental health support (including psychiatrists, clinical psychologists, mental health nurses and other professions) should be delivered early stage [37]. Access to mental health interventions could be supplemented by digital health online and smartphone technologies if face-to-face treatment is limited [36,38,39]. A clinical screening for psychiatric symptoms would ideally be an integrative element already within the acute stage. Therefore, mental health awareness appears to be an important aspect within primary care and emergency departments in particular. Moreover, social support for impaired individuals should be strengthened. This could be supported by prevention strategies that include community-based collaboration among education and employment services, families and housing, and voluntary work [36].

Strengths and limitations

The main strength of this research is that it is a large systematic review and meta-analysis that encompasses the major virus outbreaks within the last 20 years. Moreover, this research differentiates between diagnoses, time-points and moderators that allows a comprehensive view regarding the prevalence values of MHP.

This research also has some limitations. Firstly, most studies within this systematic review and meta-analysis lack representativeness. Often, patients with unstable conditions or those within ICU units, or those not hospitalized or later deceased were not included. This selection bias potentially led to an underestimation/overestimation of the prevalence estimates. Also, language bias may be present due to restricting papers based on their original language. Further, many original studies were generally of poor or moderate quality with incomplete data or a lack of random or complete sampling. This might be due to the urgent need for conducting such studies in a pandemic situation. Secondly, this meta-analysis methodology was limited by the fact that few well-validated instruments (e.g., State-Trait Anxiety Inventory) were not included in this research. The meta-regression should be interpreted cautiously since many studies did not provide data on all moderators. Furthermore, it was not possible to include all hypothetical moderators. Specifically, the physical disease severity, the burden of late

Table 2

Pooled prevalence estimates of at least mild or moderate-to-severe mental health problems including all domains jointly and separately at acute, ongoing, and post-illness stage.

Severity and domain ^a Timepoint of assessment	Nr. effect sizes	Pooled prevalence (95% CI)	p-value (Q) ^b	% between study heterogeneity	% within study variance ^c
Mild mental health problems (all domains)					
acute	55	46.3 (39.0–53.8)	< 0.0001	84.1	12.2
ongoing	11	35.5 (18.7–54.3)	< 0.0001	85.6	9.8
post-illness	18	38.8 (33.6–44.1)	< 0.0001	0.0	88.4
Moderate mental health problems (all domains)					
acute	60	22.3 (17.3–27.8)	< 0.0001	83.1	13.0
ongoing	22	17.3 (10.7–25.1)	< 0.0001	53.9	38.8
post-illness	17	18.8 (13.4–25.0)	< 0.0001	33.2	57.6
Mild anxiety					
acute	22	44.7 (34.0–55.6)	< 0.0001	96.3	0.0
ongoing	4	28.3 (20.0–37.5)	0.0188	73.6 (<i>I</i> ²)	NA
post-illness	7	33.5 (24.8–42.7)	< 0.0001	0.0	89.3
Moderate anxiety					
acute	26	19.2 (13.5–25.7)	< 0.0001	95.2	0.0
ongoing	8	14.1 (11.1–17.5)	0.0365	55.0 (<i>I</i> ²)	NA
post-illness	6	12.1 (5.3–21.1)	< 0.0001	41.0	45.8
Mild depression					
acute	30	45.3 (38.0–52.7)	< 0.0001	91.3	4.5
ongoing	5	30.8 (11.7–54.1)	< 0.0001	96.4 (<i>I</i> ²)	NA
post-illness	6	43.5 (34.1–53.1)	< 0.0001	0.0	86.6
Moderate depression					
acute	26	21.9 (15.8–28.6)	< 0.0001	96.1	0.0
ongoing	9	16.0 (8.6–25.2)	< 0.0001	93.3 (<i>I</i> ²)	NA
post-illness	9	18.2 (13.8–23.0)	< 0.0001	0.0	80.3
Mild post-traumatic stress					
acute	2	62.4 (23.6–93.8)	< 0.0001	94.8 (<i>I</i> ²)	NA
ongoing	2	43.2 (38.0–48.5)	0.7398	0.0 (<i>I</i> ²)	NA
post-illness	4	38.6 (24.0–54.3)	0.2022	0.0	36.6
Moderate post-traumatic stress					
acute	7	25.3 (7.5–48.9)	< 0.0001	94.2	2.7
ongoing	5	20.9 (9.2–35.7)	< 0.0001	95.1 (<i>I</i> ²)	NA
post-illness	2	39.1 (25.7–53.2)	0.3641	0.0 (<i>I</i> ²)	NA
Moderate general distress					
acute (NA)					
ongoing	2	66.3 (59.6–72.7)	0.6235	0.0 (<i>I</i> ²)	NA
post-illness (NA)					

^a Shown are pooled effect sizes where at least two studies by domain and timepoint were available. Otherwise indicated with NA.

^b p-value from test of heterogeneity (Q-test).

^c Within study variance displays the amount of within study variances attributed to dependent effect sizes where a three-level meta-analysis was calculated

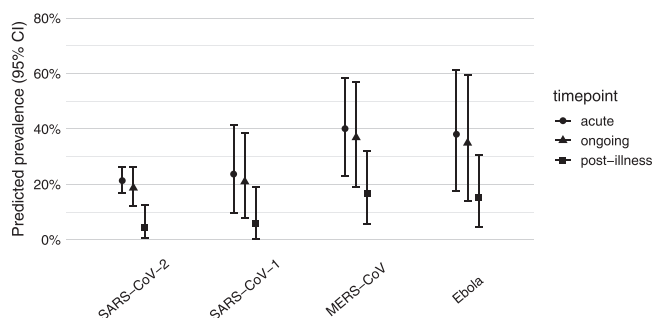


Fig. 3. Shown are predicted prevalence estimates from the meta-regression for each of the included epidemics at acute, ongoing, and post-illness stage.

physical effects or substance abuse were not covered as this was often not reported within studies.

Conclusion

In this systematic review and meta-analysis covering major virus epidemics in the last 20 years, we found high prevalence rates of at least mild but also moderate-to-severe mental health problems. Moreover, most mental health problems had a higher prevalence at an acute infection stage compared to a post-illness stage. However, post-viral MHP remained substantial in studies covering individuals' months after infection. Our findings further underline the

importance of the study quality that is not often given within the original studies. Therefore, guidelines advising assessment and reporting acute and post-illness MHP in a standardized way are urgently needed. Overall, this research highlights the fragility of mental health after infection from a pandemic virus. Consequently, it emphasizes the need for the early provision of mental health interventions that follow long-lasting post-viral mental health sequelae, particularly rehabilitation interventions.

CRediT authorship contribution statement

SJZ and **DR** conceived and designed the study. **SJZ**, **CB**, **CA**, and **PK** conducted the literature search and selection, data extraction, and appraisal of study quality. **SJZ** conducted the statistical analyses. **SJZ**, **PK**, **DR** and **AIL** wrote the first draft of the manuscript. All authors contributed to data interpretation, manuscript revisions and approved the final version of the manuscript.

Funding

No funding sources.

Ethical approval

Not required.

Availability of Data and Materials

All data to describe the main study characteristics and to calculate prevalence estimates are shown in [Table 1](#) and [Supplement](#).

Acknowledgements

No acknowledgements.

Competing interests

None declared.

Appendix A. Supporting information

Supplementary data associated with this article can be found in the online version at [doi:10.1016/j.jiph.2022.04.005](https://doi.org/10.1016/j.jiph.2022.04.005).

References

- Rogers JP, Chesney E, Oliver D, et al. Psychiatric and neuropsychiatric presentations associated with severe coronavirus infections: a systematic review and meta-analysis with comparison to the COVID-19 pandemic. *Lancet Psychiatry* 2020;7(7):611–27.
- Liu D, Baumeister RF, Zhou Y. Mental health outcomes of coronavirus infection survivors: a rapid meta-analysis. *J Psychiatr Res* 2020.
- Lötsch F, Schnyder J, Goorhuis A, Grobusch MP. Neuropsychological long-term sequelae of Ebola virus disease survivors – a systematic review. *Travel Med Infect Dis* 2017;18:18–23.
- Taqet M, Luciano S, Geddes JR, Harrison PJ. Bidirectional associations between COVID-19 and psychiatric disorder: retrospective cohort studies of 62,354 COVID-19 cases in the USA. *Lancet Psychiatry* 2021;8(2):130–40.
- Moreno-Pérez O, Merino E, Leon-Ramirez JM, et al. Post-acute COVID-19 syndrome. Incidence and risk factors: a Mediterranean cohort study. *J Infect* 2021;82(3):378–83.
- Davis HE, Assaf GS, McCorkell L, et al. Characterizing long COVID in an international cohort: 7 months of symptoms and their impact. *EClinicalMedicine* 2021;38:101019.
- Zürcher SJ, Kerksieck P, Adamus C, et al. Prevalence of mental health problems during virus epidemics in the general public, health care workers and survivors: a rapid review of the evidence. *Front Public Health* 2020;8:560389.
- Gardner PJ, Moallef P. Psychological impact on SARS survivors: critical review of the English language literature. *Can Psychol/Psychol Can* 2015;56(1):123–35.
- Maalouf FT, Mdawar B, Meho LI, Akl EA. Mental health research in response to the COVID-19, Ebola, and H1N1 outbreaks: a comparative bibliometric analysis. *J Psychiatr Res* 2021;132:198–206.
- Ren AL, Digby RJ, Needham EJ. Neurological update: COVID-19. *J Neurol* 2021.
- Billioux BJ, Smith B, Nath A. Neurological complications of ebola virus infection. *Neurotherapeutics* 2016;13(3):461–70.
- Ma Y-F, Li W, Deng H-B, et al. Prevalence of depression and its association with quality of life in clinically stable patients with COVID-19. *J Affect Disord* 2020;275:145–8.
- Brooks SK, Webster RK, Smith LE, et al. The psychological impact of quarantine and how to reduce it: rapid review of the evidence. *Lancet* 2020;395(10227):912–20.
- Lopez-Leon S, Wegman-Ostrosky T, Perelman C, et al. More than 50 Long-term effects of COVID-19: a systematic review and meta-analysis. medRxiv: the preprint server for health sciences; 2021.
- Jeong H, Yim HW, Song YJ, et al. Mental health status of people isolated due to Middle East respiratory syndrome. *Epidemiol Health* 2016;38:e2016048.
- Rushforth A, Ladds E, Wieringa S, Taylor S, Husain L, Greenhalgh T. Long covid – the illness narratives. *Soc Sci Med* 2021;286:114326. [(1982)].
- Callard F, Perego E. How and why patients made long covid. *Soc Sci Med* 2021;268:113426. [(1982)].
- The Lancet. Understanding long COVID: a modern medical challenge. *Lancet* 2021;398(10302):725.
- Migliavaca CB, Stein C, Colpani V, Munn Z, Falavigna M. Quality assessment of prevalence studies: a systematic review. *J Clin Epidemiol* 2020;127:59–68.
- Page MJ, McKenzie JE, Bossuyt PM, et al. The PRISMA 2020 statement: an updated guideline for reporting systematic reviews. *BMJ* 2021;372(n71).
- Mayor N, Tsang R, Joy M, Hobbs FDR, de Lusignan S. Long covid: coding is caring. *BMJ* 2021;373:n1262.
- Munn Z, Moola S, Lisy K, Riitano D, Tufanaru C. Methodological guidance for systematic reviews of observational epidemiological studies reporting prevalence and cumulative incidence data. *Int J Evid-Based Healthc* 2015;13(3):147–53.
- Cheung MWL. A guide to conducting a meta-analysis with non-independent effect sizes. *Neuropsychol Rev* 2019;29(4):387–96.
- Freeman MF, Tukey JW. Transformations related to the angular and the square root. *Ann Math Stat* 1950;21(4):607–11.
- Assink M, Wibbelink CJM. Fitting three-level meta-analytic models in R: a step-by-step tutorial. *TQMP* 2016;12(3):154–74.
- Viechtbauer W. Conducting meta-analyses in R with the metafor Package. 2010. vol. 36, issue 3; 2010, 48.
- Secor A, Macauley R, Stan L, et al. Mental health among Ebola survivors in Liberia, Sierra Leone and Guinea: results from a cross-sectional study. *BMJ Open* 2020;10(5):e035217.
- Wu KK, Chan SK, Ma TM. Posttraumatic stress after SARS. *Emerg Infect Dis* 2005;11(8):1297–300.
- Wu KK, Chan SK, Ma TM. Posttraumatic stress, anxiety, and depression in survivors of severe acute respiratory syndrome (SARS). *J Trauma Stress* 2005;18(1):39–42.
- Liu D, Baumeister RF, Zhou Y. Mental health outcomes of coronavirus infection survivors: a rapid meta-analysis. *J Psychiatr Res* 2021;137:542–53.
- James PB, Wardle J, Steel A, Adams J. Post-Ebola psychosocial experiences and coping mechanisms among Ebola survivors: a systematic review. *Trop Med Int Health* 2019;24(6):671–91.
- Lopez-Leon S, Wegman-Ostrosky T, Perelman C, et al. More than 50 long-term effects of COVID-19: a systematic review and meta-analysis. *Sci Rep* 2021;11(1):16144.
- Taqet M, Dercon Q, Luciano S, Geddes JR, Husain M, Harrison PJ. Incidence, co-occurrence, and evolution of long-COVID features: a 6-month retrospective cohort study of 273,618 survivors of COVID-19. *PLoS Med* 2021;18(9):e1003773.
- Marshall M. The four most urgent questions about long COVID. *Nature* 2021;594(7862):168–70.
- Richter D, Riedel-Heller S, Zürcher SJ. Mental health problems in the general population during and after the first lockdown phase due to the SARS-Cov-2 pandemic: rapid review of multi-wave studies. *Epidemiol Psychiatr Sci* 2021;30:e27.
- Moreno C, Wykes T, Galderisi S, et al. How mental health care should change as a consequence of the COVID-19 pandemic. *Lancet Psychiatry* 2020;7(9):813–24.
- Xiang YT, Yang Y, Li W, et al. Timely mental health care for the 2019 novel coronavirus outbreak is urgently needed. *Lancet Psychiatry* 2020;7(3):228–9.
- Ho CS, Chee CY, Ho RC. Mental health strategies to combat the psychological impact of COVID-19 beyond paranoia and panic. *Ann Acad Med Singap* 2020;49(3):155–60.
- Liu S, Yang L, Zhang C, et al. Online mental health services in China during the COVID-19 outbreak. *Lancet Psychiatry* 2020;7(4):e17–8.
- Akinci T, Melek, Basar H. Relationship between sleep quality and the psychological status of patients hospitalised with COVID-19. *Sleep Med* 2021;80:167–70.
- Bah AJ, James PB, Bah N, Sesay AB, Sevalie S, Kanu JS. Prevalence of anxiety, depression and post-traumatic stress disorder among Ebola survivors in northern Sierra Leone: a cross-sectional study. *BMC Public Health* 2020;20(1):1391.
- Bellan M, Soddu D, Balbo PE, et al. Respiratory and psychophysical sequelae among patients with COVID-19 four months after hospital discharge. *JAMA Netw Open* 2021;4(1):e2036142.
- Bonazza F, Borghi L, di San Marco EC, et al. Psychological outcomes after hospitalization for COVID-19: data from a multidisciplinary follow-up screening program for recovered patients. *Res Psychother* 2020;23(3):491.
- Chen Y, Huang X, Zhang C, et al. Prevalence and predictors of posttraumatic stress disorder, depression and anxiety among hospitalized patients with coronavirus disease 2019 in China. *BMC Psychiatry* 2021;21(1):80.
- Chen F, Wang XD, Zhu KK, Hu JB. Investigation of the psychological status of suspected patients during the Coronavirus disease 2019 epidemic. *Medicine* 2020;99(38):e22260.
- Cheng SKW, Sheng B, Lau KK, et al. Adjustment outcomes in Chinese patients following one-month recovery from severe acute respiratory syndrome in Hong Kong. *J Nerv Ment Dis* 2004;192(12):868–71.
- Chieffo DPR, Delle Donne V, Massaroni V, et al. Psychopathological profile in COVID-19 patients including healthcare workers: the implications. *Eur Rev Med Pharm Sci* 2020;24(22):11964–70.
- D'Cruz RF, Waller MD, Perrin F, et al. Chest radiography is a poor predictor of respiratory symptoms and functional impairment in survivors of severe COVID-19 pneumonia. *ERJ Open Res* 2021;7(1).
- Etard JF, Sow MS, Leroy S, et al. Multidisciplinary assessment of post-Ebola sequelae in Guinea (Postebogui): an observational cohort study. *Lancet Infect Dis* 2017;17(5):545–52.
- Guo Q, Zheng Y, Shi J, et al. Immediate psychological distress in quarantined patients with COVID-19 and its association with peripheral inflammation: a mixed-method study. *Brain Behav Immun* 2020.
- He X, Zhang D, Zhang L, et al. Neurological and psychiatric presentations associated with COVID-19. *Eur Arch Psychiatry Clin Neurosci* 2021:1–12.
- Heyns A, Dupont J, Gielen E, et al. Impact of COVID-19: urging a need for multi-domain assessment of COVID-19 inpatients. *Eur Geriatr Med* 2021:1–8.
- Horn M, Wathlet M, Fovet T, et al. Is COVID-19 associated with posttraumatic stress disorder? *J Clin Psychiatry* 2020;82(1).
- Hu Y, Chen Y, Zheng Y, et al. Factors related to mental health of inpatients with COVID-19 in Wuhan, China. *Brain Behav Immun* 2020.
- Islam MS, Ferdous MZ, Islam US, Mosaddek ASM, Potenza MN, Pardhan S. Treatment, persistent symptoms, and depression in people infected with COVID-19 in Bangladesh. *Int J Environ Res Public Health* 2021;18(4).
- Jeong H, Yim HW, Song YJ, et al. Mental health status of people isolated due to Middle East respiratory syndrome. *Epidemiol Health* 2016;38:e2016048.

- [57] Jeong SJ, Chung WS, Sohn Y, et al. Clinical characteristics and online mental health care of asymptomatic or mildly symptomatic patients with coronavirus disease 2019. *PLoS One* 2020;15(11):e0242130.
- [58] Ju Y, Chen W, Liu J, et al. Effects of centralized isolation vs. home isolation on psychological distress in patients with COVID-19. *J Psychosom Res* 2021;143:110365.
- [59] Kandeger A, Aydin M, Altinbas K, et al. Evaluation of the relationship between perceived social support, coping strategies, anxiety, and depression symptoms among hospitalized COVID-19 patients. *Int J Psychiatry Med* 2020.
- [60] Kang E, Lee SY, Kim MS, et al. The psychological burden of COVID-19 stigma: evaluation of the mental health of isolated mild condition COVID-19 patients. *J Korean Med Sci* 2021;36(3):e33.
- [61] Keita MM, Taverne B, Sy Savane S, et al. Depressive symptoms among survivors of Ebola virus disease in Conakry (Guinea): preliminary results of the PostEboGui cohort. *BMC Psychiatry* 2017;17(1):127.
- [62] Kim HC, Yoo SY, Lee BH, Lee SH, Shin HS. Psychiatric findings in suspected and confirmed Middle East respiratory syndrome patients quarantined in hospital: a retrospective chart analysis. *Psychiatry Investig* 2018;15(4):355–60.
- [63] Kim JW, Stewart R, Kang SJ, Jung SI, Kim SW, Kim JM. Telephone based interventions for psychological problems in hospital isolated patients with COVID-19. *Clin Psychopharm Neurosci: Sci J Korean Coll Neuropsychopharm* 2020;18(4):616–20.
- [64] Kong X, Kong F, Zheng K, et al. Effect of psychological-behavioral intervention on the depression and anxiety of COVID-19 patients. *Front Psychiatry* 2020;11:586355.
- [65] Kwek SK, Chew WM, Ong KC, et al. Quality of life and psychological status in survivors of severe acute respiratory syndrome at 3 months postdischarge. *J Psychosom Res* 2006;60(5):513–9.
- [66] Lam MH, Wing YK, Yu MW, et al. Mental morbidities and chronic fatigue in severe acute respiratory syndrome survivors: long-term follow-up. *Arch Intern Med* 2009;169(22):2142–7.
- [67] Lee AM, Wong JG, McAlonan GM, et al. Stress and psychological distress among SARS survivors 1 year after the outbreak. *Can J Psychiatry Rev Can Psychiatr* 2007;52(4):233–40.
- [68] Lee SH, Shin HS, Park HY, et al. Depression as a mediator of chronic fatigue and post-traumatic stress symptoms in Middle East respiratory syndrome survivors. *Psychiatry Investig* 2019;16(1):59–64.
- [69] Li X, Tian J, Xu Q. The associated factors of anxiety and depressive symptoms in COVID-19 patients hospitalized in Wuhan, China. *Psychiatr Q* 2020:1–9.
- [70] Luyt CE, Combes A, Becquemin MH, et al. Long-term outcomes of pandemic 2009 influenza A(H1N1)-associated severe ARDS. *Chest* 2012;142(3):583–92.
- [71] Ma Y-F, Li W, Deng H-B, et al. Prevalence of depression and its association with quality of life in clinically stable patients with COVID-19. *J Affect Disord* 2020;275:145–8.
- [72] Mak IWC, Chu CM, Pan PC, Yiu MGC, Chan VL. Long-term psychiatric morbidities among SARS survivors. *Gen Hosp Psychiatry* 2009;31(4):318–26.
- [73] Martillo M, Dangayach N, Tabacof L, et al. Postintensive care syndrome in survivors of critical illness related to coronavirus disease 2019: cohort study from a New York City critical care recovery clinic. *Crit Care Med* 2021.
- [74] Mazza MG, De Lorenzo R, Conte C, et al. Anxiety and depression in COVID-19 survivors: role of inflammatory and clinical predictors. *Brain Behav Immun* 2020;89:594–600.
- [75] Mina FB, Billah M, Karmakar S, et al. An online observational study assessing clinical characteristics and impacts of the COVID-19 pandemic on mental health: a perspective study from Bangladesh. *Z fur Gesundh = J Public Health* 2021:1–9.
- [76] Morin L, Savale L, Pham T, et al. Four-month clinical status of a cohort of patients after hospitalization for COVID-19. *Jama* 2021.
- [77] Mowla A, Ghaedsharaf M, Pani A. Psychopathology in elderly COVID-19 survivors and controls. *J Geriatr Psychiatry Neurol* 2021. [8919887211002664].
- [78] Olanipekun T, Abe T, Effoe V, Westney G, Snyder R. Incidence and severity of depression among recovered African Americans with COVID-19-associated respiratory failure. *J Racial Ethn Health Dispar* 2021:1–6.
- [79] Park HY, Park WB, Lee SH, et al. Posttraumatic stress disorder and depression of survivors 12 months after the outbreak of Middle East respiratory syndrome in South Korea. *BMC Public Health* 2020;20(1):605.
- [80] Parker C, Shalev D, Hsu I, et al. Depression, anxiety, and acute stress disorder among patients hospitalized with COVID-19: a prospective cohort study. *J Acad Consult Liaison Psychiatry* 2021;62(2):211–9.
- [81] Paz C, Mascialino G, Adana-Díaz L, et al. Behavioral and sociodemographic predictors of anxiety and depression in patients under epidemiological surveillance for COVID-19 in Ecuador. *PLoS One* 2020;15(9):e0240008.
- [82] Poyraz B, Poyraz C, Olgun Y, et al. Psychiatric morbidity and protracted symptoms after COVID-19. *Psychiatry Res* 2021;295:113604.
- [83] Raman B, Cassar MP, Tunnicliffe EM, et al. Medium-term effects of SARS-CoV-2 infection on multiple vital organs, exercise capacity, cognition, quality of life and mental health, post-hospital discharge. *EclinicalMedicine* 2021;31. [100683-].
- [84] Rass V, Beer R, Josef Schiefecker A, et al. Neurological outcome and quality of life three months after COVID-19: a prospective observational cohort study. *Eur J Neurol* 2021.
- [85] Şahan E, Ünal SM, Kirpınar I. Can we predict who will be more anxious and depressed in the COVID-19 ward? *J Psychosom Res* 2021;140:110302.
- [86] Samrah SM, Al-Mistareh AH, Aleshawi AJ, et al. Depression and coping among COVID-19-infected individuals after 10 days of mandatory in-hospital quarantine, Irbid, Jordan. *Psychol Res Behav Manag* 2020;13:823–30.
- [87] Secor A, Macauley R, Stan L, et al. Mental health among Ebola survivors in Liberia, Sierra Leone and Guinea: results from a cross-sectional study. *BMJ Open* 2020;10(5):e035217.
- [88] Sheng B, Cheng SKW, Lau KK, Li HL, Chan ELY. The effects of disease severity, use of corticosteroids and social factors on neuropsychiatric complaints in severe acute respiratory syndrome (SARS) patients at acute and convalescent phases. *Eur Psychiatry* 2005;20(3):236–42.
- [89] Speth MM, Singer-Cornelius T, Oberle M, Gengler I, Brockmeier SJ, Sedaghat AR. Mood, anxiety and olfactory dysfunction in COVID-19: evidence of central nervous system involvement? *Laryngoscope* 2020.
- [90] van den Borst B, Peters JB, Brink M, et al. Comprehensive health assessment three months after recovery from acute COVID-19. *Clin Infect Dis: Publ Infect Dis Soc Am* 2020.
- [91] Wang M, Hu C, Zhao Q, et al. Acute psychological impact on COVID-19 patients in Hubei: a multicenter observational study. *Transl Psychiatry* 2021;11(1):133.
- [92] Wu KK, Chan SK, Ma TM. Posttraumatic stress, anxiety, and depression in survivors of severe acute respiratory syndrome (SARS). *J Trauma Stress* 2005;18(1):39–42.
- [93] Wu KK, Chan SK, Ma TM. Posttraumatic stress after SARS. *Emerg Infect Dis* 2005;11(8):1297–300.
- [94] Xu F, Wang X, Yang Y, et al. Depression and insomnia in COVID-19 survivors: a cross-sectional survey from Chinese rehabilitation centers in Anhui province. *Sleep Med* 2021.
- [95] Yadav R, Yadav P, Kumar SS, Kumar R. Assessment of depression, anxiety, and sleep disturbance in COVID-19 patients at tertiary care centre of North India. *J Neurosci Rural Pract* 2021.
- [96] Zarghami A, Farjam M, Fakhraei B, Hashemzadeh K, Yazdanpanah MH. A report of the telepsychiatric evaluation of SARS-CoV-2 patients. *Telemed J e-Health: J Am Telemed Assoc* 2020.
- [97] Zhang H, Qin S, Zhang L, Feng Z, Fan C. A psychological investigation of coronavirus disease 2019 (COVID-19) patients in mobile cabin hospitals in Wuhan. *Ann Transl Med* 2020;8(15):941.
- [98] Zhang J, Yang Z, Wang X, et al. The relationship between resilience, anxiety and depression among patients with mild symptoms of COVID-19 in China: a cross-sectional study. *J Clin Nurs* 2020;29(21–22):4020–9. [39+59].