

# Pancreatic progenitor epigenome maps prioritize type 2 diabetes risk genes with roles in development

Ryan J Geusz<sup>1,2,3,4†</sup>, Allen Wang<sup>1,2,3†</sup>, Joshua Chiou<sup>1,4†</sup>, Joseph J Lancman<sup>5,6†</sup>, Nichole Wetton<sup>1,2,3</sup>, Samy Kefalopoulou<sup>1,2,3</sup>, Jinzhao Wang<sup>1,2,3</sup>, Yunjiang Qiu<sup>2</sup>, Jian Yan<sup>2</sup>, Anthony Aylward<sup>1</sup>, Bing Ren<sup>2,7</sup>, P Duc Si Dong<sup>5,6</sup>, Kyle J Gaulton<sup>1\*</sup>, Maïke Sander<sup>1,2,3\*</sup>

<sup>1</sup>Department of Pediatrics, Pediatric Diabetes Research Center, University of California, San Diego, San Diego, United States; <sup>2</sup>Department of Cellular & Molecular Medicine, University of California, San Diego, San Diego, United States; <sup>3</sup>Sanford Consortium for Regenerative Medicine, San Diego, United States; <sup>4</sup>Biomedical Graduate Studies Program, University of California, San Diego, San Diego, United States; <sup>5</sup>Human Genetics Program, Sanford Burnham Prebys Medical Discovery Institute, San Diego, United States; <sup>6</sup>Graduate School of Biomedical Sciences, Sanford Burnham Prebys Medical Discovery Institute, San Diego, United States; <sup>7</sup>Ludwig Institute for Cancer Research, San Diego, United States

**Abstract** Genetic variants associated with type 2 diabetes (T2D) risk affect gene regulation in metabolically relevant tissues, such as pancreatic islets. Here, we investigated contributions of regulatory programs active during pancreatic development to T2D risk. Generation of chromatin maps from developmental precursors throughout pancreatic differentiation of human embryonic stem cells (hESCs) identifies enrichment of T2D variants in pancreatic progenitor-specific stretch enhancers that are not active in islets. Genes associated with progenitor-specific stretch enhancers are predicted to regulate developmental processes, most notably tissue morphogenesis. Through gene editing in hESCs, we demonstrate that progenitor-specific enhancers harboring T2D-associated variants regulate cell polarity genes *LAMA1* and *CRB2*. Knockdown of *lama1* or *crb2* in zebrafish embryos causes a defect in pancreas morphogenesis and impairs islet cell development. Together, our findings reveal that a subset of T2D risk variants specifically affects pancreatic developmental programs, suggesting that dysregulation of developmental processes can predispose to T2D.

**\*For correspondence:**

kgaulton@health.ucsd.edu (KJG);  
masander@ucsd.edu (MS)

†These authors contributed equally to this work

**Competing interest:** See page 31

**Funding:** See page 31

**Received:** 01 July 2020

**Accepted:** 18 January 2021

**Published:** 05 February 2021

**Reviewing editor:** Mone Zaidi, Icahn School of Medicine at Mount Sinai, United States

© Copyright Geusz et al. This article is distributed under the terms of the [Creative Commons Attribution License](#), which permits unrestricted use and redistribution provided that the original author and source are credited.

## Introduction

Type 2 diabetes (T2D) is a multifactorial metabolic disorder characterized by insulin insensitivity and insufficient insulin secretion by pancreatic beta cells (*Halban et al., 2014*). Genetic association studies have identified hundreds of loci influencing risk of T2D (*Mahajan et al., 2018*). However, disease-relevant target genes of T2D risk variants, the mechanisms by which these genes cause disease, and the tissues in which the genes mediate their effects remain poorly understood.

The majority of T2D risk variants map to non-coding sequence, suggesting that genetic risk of T2D is largely mediated through variants affecting transcriptional regulatory activity. Intersection of T2D risk variants with epigenomic data has uncovered enrichment of T2D risk variants in regulatory sites active in specific cell types, predominantly in pancreatic beta cells, including risk variants that affect regulatory activity directly (*Chiou et al., 2019; Fuchsberger et al., 2016; Gaulton et al.,*

2015; Gaulton et al., 2010; Greenwald et al., 2019; Mahajan et al., 2018; Parker et al., 2013; Pasquali et al., 2014; Thurner et al., 2018; Varshney et al., 2017). T2D risk-associated variants are further enriched within large, contiguous regions of islet active chromatin, referred to as stretch or super-enhancers (Parker et al., 2013). These regions of active chromatin preferentially bind islet-cell-restricted transcription factors and drive islet-specific gene expression (Parker et al., 2013; Pasquali et al., 2014).

Many genes associated with T2D risk in islets are not uniquely expressed in differentiated islet endocrine cells, but also in pancreatic progenitor cells during embryonic development. For example, T2D risk variants map to *HNF1A*, *HNF1B*, *HNF4A*, *MNX1*, *NEUROG3*, *PAX4*, and *PDX1* (Flannick et al., 2019; Mahajan et al., 2018; Steinhorsdottir et al., 2014), which are all transcription factors also expressed in pancreatic developmental precursors. Studies in model organisms and hESC-based models of pancreatic endocrine cell differentiation have shown that inactivation of these transcription factors causes defects in endocrine cell development, resulting in reduced beta cell numbers (Gaertner et al., 2019). Furthermore, heterozygous mutations for *HNF1A*, *HNF1B*, *HNF4A*, *PAX4*, and *PDX1* are associated with maturity onset diabetes of the young (MODY), which is an autosomal dominant form of diabetes with features similar to T2D (Urakami, 2019). Thus, there is evidence that reduced activity of developmentally expressed transcription factors can cause diabetes later in life.

The role of these transcription factors in T2D and MODY could be explained by their functions in regulating gene expression in mature islet cells. However, it is also possible that their function during endocrine cell development could predispose to diabetes instead of, or in addition to, endocrine cell gene regulation. One conceivable mechanism is that individuals with reduced activity of these transcription factors are born with either fewer beta cells or beta cells more prone to fail under conditions of increased insulin demand. Observations showing that disturbed intrauterine metabolic conditions, such as maternal malnutrition, can lead to reduced beta cell mass and T2D predisposition in the offspring (Lumey et al., 2015; Nielsen et al., 2014; Portha et al., 2011) support the concept that compromised beta cell development could predispose to T2D. However, whether there is T2D genetic risk relevant to the regulation of endocrine cell development independent of gene regulation in mature islet cells has not been explored.

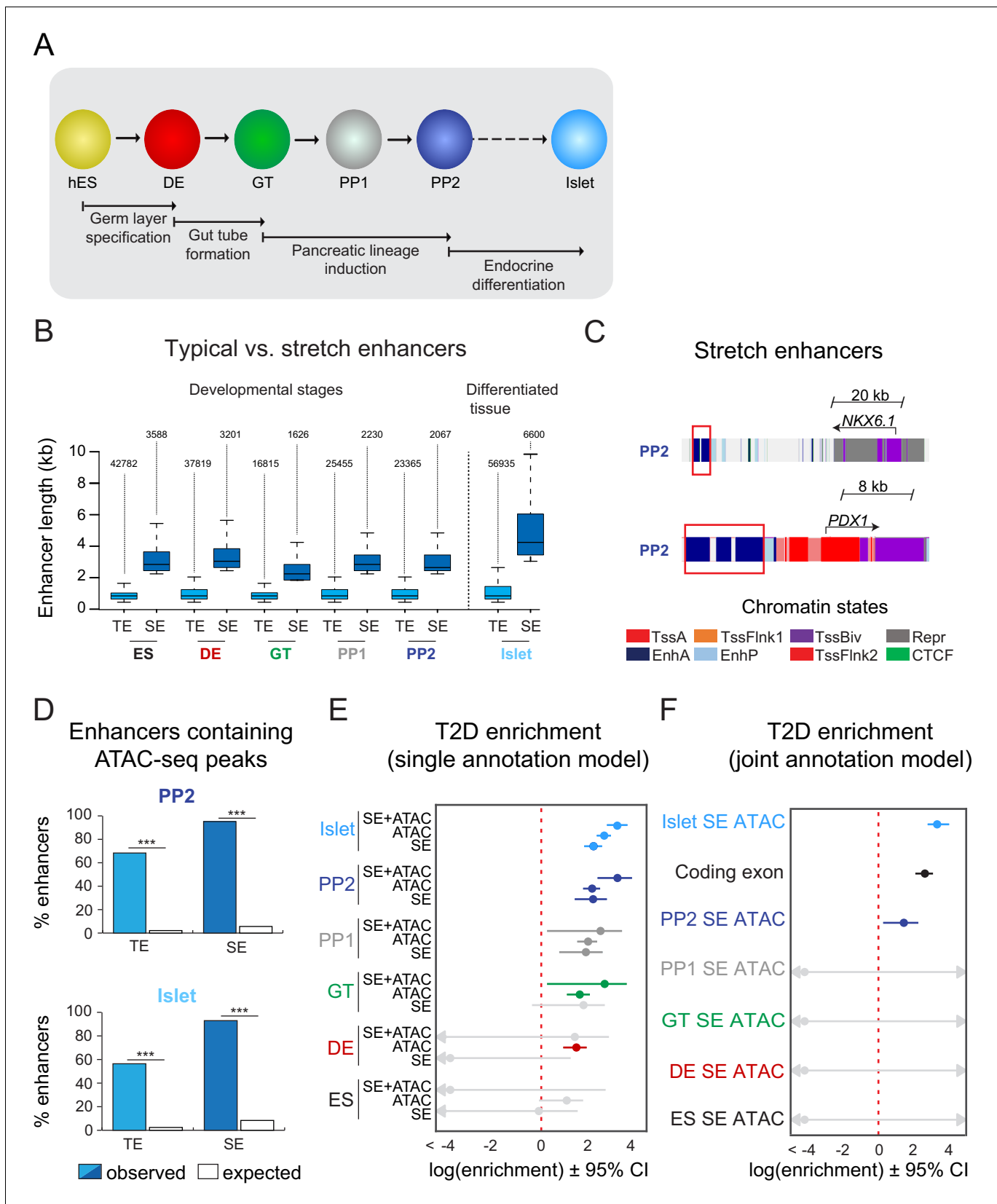
In this study, we investigated the contribution of gene regulatory programs specifically active during pancreatic development to T2D risk. First, we employed a hESC-based differentiation system to generate chromatin maps of hESCs during their stepwise differentiation into pancreatic progenitor cells. We then identified T2D-associated variants localized in active enhancers in developmental precursors but not in mature islets, used genome editing in hESCs to define target genes of pancreatic progenitor-specific enhancers harboring T2D variants, and employed zebrafish genetic models to study the role of two target genes in pancreatic and endocrine cell development.

## Results

### Pancreatic progenitor stretch enhancers are enriched for T2D risk variants

To determine whether there is a development-specific genetic contribution to T2D risk, we generated genome-wide chromatin maps of hESCs during their stepwise differentiation into pancreatic progenitors through four distinct developmental stages: definitive endoderm (DE), gut tube (GT), early pancreatic progenitors (PP1), and late pancreatic progenitors (PP2) (Figure 1A). We then used ChromHMM (Ernst and Kellis, 2012) to annotate chromatin states, such as active promoters and enhancers, at all stages of hESC differentiation as well as in primary islets (Figure 1—figure supplement 1A,B).

Large and contiguous regions of active enhancer chromatin, which have been termed stretch- or super-enhancers (Parker et al., 2013; Whyte et al., 2013), are highly enriched for T2D risk variants in islets (Parker et al., 2013; Pasquali et al., 2014). We therefore partitioned active enhancers from each hESC developmental stage and islets into stretch enhancers (SE) and traditional (non-stretch) enhancers (TE) (Figure 1B). Consistent with prior observations of SE features (Parker et al., 2013; Whyte et al., 2013), SE comprised a small subset of all active enhancers (7.7%, 7.8%, 8.8%, 8.1%, 8.1%, and 10.4% of active enhancers in ES, DE, GT, PP1, PP2, and islets, respectively; Figure 1B and



**Figure 1.** T2D-associated risk variants are enriched in stretch enhancers of pancreatic progenitors independent of islet stretch enhancers. (A) Schematic illustrating the stepwise differentiation of human embryonic stem cells (hES) into pancreatic progenitors (solid arrows) and lineage relationship to islets  
 Figure 1 continued on next page

Figure 1 continued

(dotted arrow). Developmental intermediates include definitive endoderm (DE), gut tube (GT), early pancreatic progenitor (PP1), and late pancreatic progenitor (PP2) cells. (B) Box plots depicting length of typical enhancers (TE) and stretch enhancers (SE) at each developmental stage and in primary human islets. Plots are centered on median, with box encompassing 25–75th percentile and whiskers extending up to 1.5 interquartile range. Total numbers of enhancers are shown above each box plot. (C) Examples of stretch enhancers (denoted with red boxes) near the genes encoding the pancreatic lineage-determining transcription factors NKX6.1 and PDX1, respectively. Chromatin states are based on ChromHMM classifications: TssA, active promoter; TssFlnk, flanking transcription start site; TssBiv, bivalent promoter; Repr, repressed; EnhA, active enhancer; EnhP, poised enhancer. (D) Percentage of TE and SE overlapping with at least one ATAC-seq peak at PP2 or in islets. Enrichment analysis comparing observed and expected overlap based on random genomic regions of the same size and located on the same chromosome averaged over 10,000 iterations ( $***p < 1 \times 10^{-4}$ ; permutation test). ATAC-seq peaks were merged from two independent differentiations for PP2 stage cells and four donors for primary islets. (E) Genome-wide enrichment of T2D-associated variants (minor allele frequency  $>0.0025$ ) in stretch enhancers, ATAC-seq peaks, and ATAC-seq peaks within stretch enhancers for all developmental stages when modeling each annotation separately. Points and lines represent log-scaled enrichment estimates and 95% confidence intervals from functional genome wide association analysis (fgwas), respectively. ATAC-seq peaks were merged from two independent differentiations for ES, DE, GT, PP1, and PP2 stage cells and from four donors for primary islets. (F) Genome-wide enrichment of T2D-associated variants (minor allele frequency  $>0.0025$ ) in ATAC-seq peaks within stretch enhancers for all developmental stages and coding exons when considering all annotations in a joint model. Points and lines represent log-scaled enrichment estimates and 95% confidence intervals from fgwas, respectively. ATAC-seq peaks were merged from two independent differentiations for ES, DE, GT, PP1, and PP2 stage cells and from four donors for primary islets. See also **Figure 1—figure supplement 1**.

The online version of this article includes the following figure supplement(s) for figure 1:

**Figure supplement 1.** Characterization of typical and stretch enhancers in pancreatic developmental intermediates and islets.

**Figure 1—figure supplement 1C**) and genes proximal to SE were more highly expressed than genes proximal to TE ( $p=4.68 \times 10^{-7}$ ,  $4.64 \times 10^{-11}$ ,  $1.31 \times 10^{-5}$ ,  $8.85 \times 10^{-9}$ ,  $5.34 \times 10^{-6}$ , and  $<2.2 \times 10^{-16}$  for expression of genes near TE vs SE in ES, DE, GT, PP1, PP2, and islets, respectively; **Figure 1—figure supplement 1D**). Genes near SE in pancreatic progenitors included transcription factors involved in the regulation of pancreatic cell identity, such as NKX6.1 and PDX1 (**Figure 1C**). Since disease-associated variants are preferentially enriched in narrow peaks of accessible chromatin within broader regions of active chromatin ([Greenwald et al., 2019](#); [Thurner et al., 2018](#); [Varshney et al., 2017](#)), we next used ATAC-seq to generate genome-wide maps of chromatin accessibility across all time points of differentiation. Nearly all identified SE contained at least one ATAC-seq peak (**Figure 1D** and **Figure 1—figure supplement 1E,F**). At the PP2 stage, 62.3% of SE harbored one, 32.2% two or three, and 0.7% four or more ATAC-seq peaks (**Figure 1—figure supplement 1F**). Similar percentages were observed in earlier developmental precursors and islets.

Having annotated accessible chromatin sites within SE, we next tested for enrichment of T2D-associated variants in SE active in mature islets and in pancreatic developmental stages. We observed strongest enrichment of T2D-associated variants in islet SE (log enrichment = 2.18, 95% CI = 1.80, 2.54) and late pancreatic progenitor SE (log enrichment = 2.17, 95% CI = 1.40, 2.74), which was more pronounced when only considering variants in accessible chromatin sites within these elements (islet log enrichment = 3.20, 95% CI = 2.74, 3.60; PP2 log enrichment = 3.18, 95% CI = 2.35, 3.79; **Figure 1E**). Given that a subset of pancreatic progenitor SE is also active in islets, we next determined whether pancreatic progenitor SE contribute to T2D risk independently of islet SE. Variants in accessible chromatin sites of late pancreatic progenitor SE were enriched for T2D association in a joint model including islet SE (islet log enrichment = 2.94, 95% CI = 2.47, 3.35; PP2 log enrichment = 1.27, 95% CI = 0.24, 2.00; **Figure 1F**). We also observed enrichment of variants in accessible chromatin sites of pancreatic progenitor SE after conditioning on islet SE (log enrichment = 0.60, 95% CI = -0.87, 1.48), as well as when excluding pancreatic progenitor SE active in islets (log enrichment = 1.62, 95% CI = -0.20, 3.14). Examples of known T2D loci with T2D-associated variants in SE active in pancreatic progenitors but not in islets included LAMA1 and PROX1. These results suggest that a subset of T2D variants may affect disease risk by altering regulatory programs specifically active in pancreatic progenitors.

### Pancreatic progenitor-specific stretch enhancers are near genes that regulate tissue morphogenesis

Having observed enrichment of T2D risk variants in pancreatic progenitor SE independent of islet SE, we next sought to further characterize the regulatory programs of SE with specific function in

pancreatic progenitors. We therefore defined a set of pancreatic progenitor-specific stretch enhancers (PSSE) based on the following criteria: (i) annotation as a SE at the PP2 stage, (ii) no classification as a SE at the ES, DE, and GT stages, and (iii) no classification as a TE or SE in islets. Applying these criteria, we identified a total of 492 PSSE genome-wide (**Figure 2A** and **Figure 2—source data 1**).

As expected based on their chromatin state classification, PSSE acquired broad deposition of the active enhancer mark H3K27ac at the PP1 and PP2 stages (**Figure 2B,C**). Coincident with an increase in H3K27ac signal, chromatin accessibility at PSSE also increased (**Figure 2B**), and 93.5% of PSSE contained at least one accessible chromatin site at the PP2 stage (**Figure 2—figure supplement 1A, B**). Further investigation of PSSE chromatin state dynamics at earlier stages of pancreatic differentiation revealed that PSSE were often poised (defined by H3K4me1 in the absence of H3K27ac) prior to activation (42%, 48%, 63%, and 17% of PSSE in ES, DE, GT, and PP1, respectively; **Figure 2C**), consistent with earlier observations that a poised enhancer state frequently precedes enhancer activation during development (*Rada-Iglesias et al., 2011*; *Wang et al., 2015*). Intriguingly, a subset of PSSE was classified as TE earlier in development (13%, 23%, 29%, and 46% of PSSE in ES, DE, GT, and PP1, respectively; **Figure 2C**), suggesting that SE emerge from smaller regions of active chromatin seeded at prior stages of development. During differentiation into mature islet cells, PSSE lost H3K27ac but largely retained H3K4me1 signal (62% of PSSE) (**Figure 2C**), persisting in a poised state in terminally differentiated islet cells.

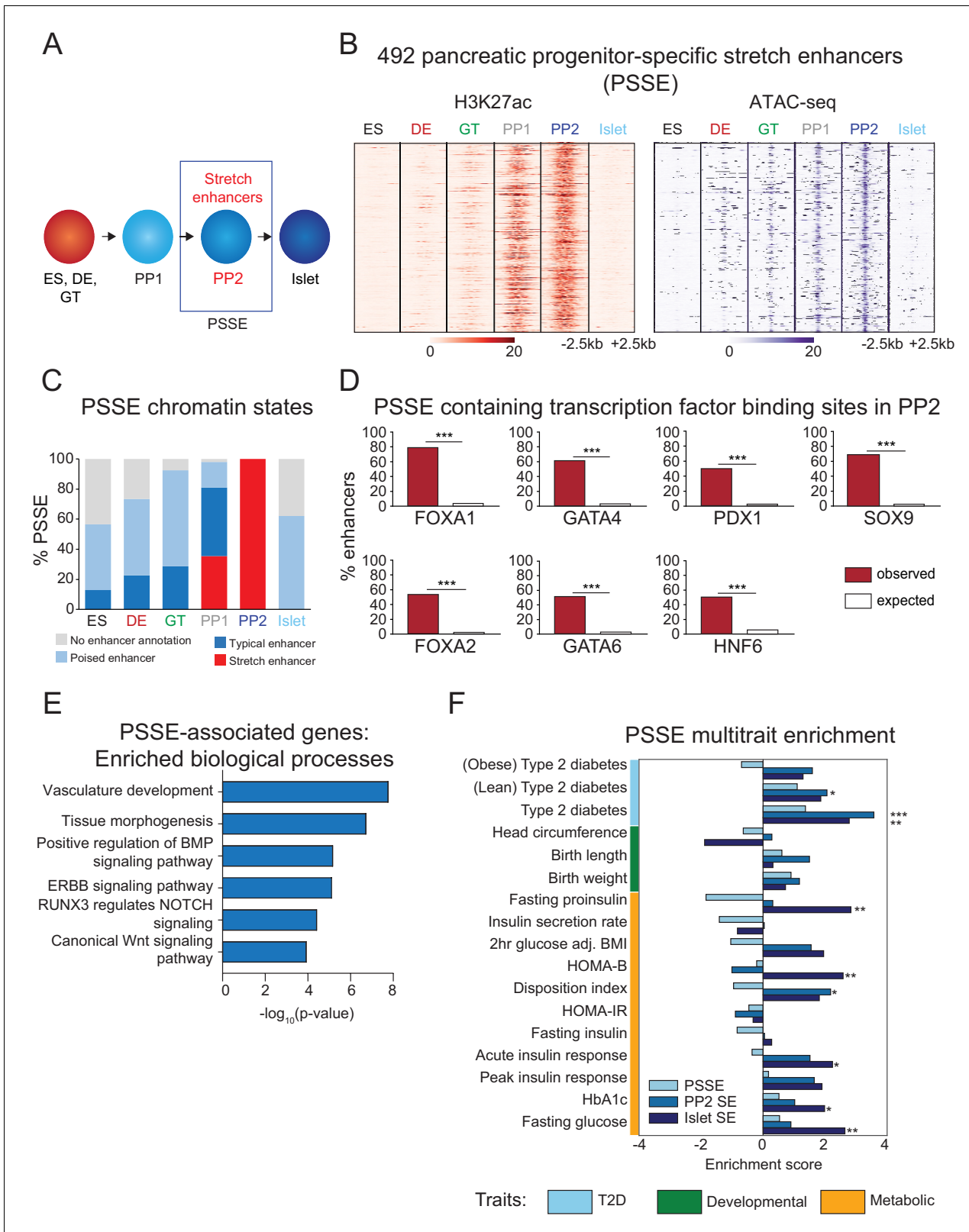
To gain insight into the transcription factors that regulate PSSE, we conducted motif enrichment analysis of accessible chromatin sites within PSSE (**Figure 2—figure supplement 1C**). Consistent with the activation of PSSE upon pancreas induction, motifs associated with transcription factors known to regulate pancreatic development (*Conrad et al., 2014*; *Masui et al., 2007*) were enriched, including FOXA ( $p=1 \times 10^{-34}$ ), PDX1 ( $p=1 \times 10^{-30}$ ), GATA ( $p=1 \times 10^{-25}$ ), ONECUT ( $p=1 \times 10^{-17}$ ), and RBPJ ( $p=1 \times 10^{-14}$ ), suggesting that pancreatic lineage-determining transcription factors activate PSSE. Analysis of the extent of PSSE overlap with ChIP-seq binding sites for FOXA1, FOXA2, GATA4, GATA6, PDX1, HNF6, and SOX9 at the PP2 stage substantiated this prediction ( $p < 1 \times 10^{-4}$  for all transcription factors; permutation test; **Figure 2D**).

Annotation of biological functions of predicted target genes for PSSE (nearest gene with FPKM  $\geq 1$  at PP2 stage) revealed gene ontology terms related to developmental processes, such as tissue morphogenesis ( $p=1 \times 10^{-7}$ ) and vascular development ( $p=1 \times 10^{-8}$ ), as well as developmental signaling pathways, including BMP ( $p=1 \times 10^{-5}$ ), NOTCH ( $p=1 \times 10^{-4}$ ), and canonical Wnt signaling ( $p=1 \times 10^{-4}$ ; **Figure 2E** and **Figure 2—source data 2**), which have demonstrated roles in pancreas morphogenesis and cell lineage allocation (*Ahnfelt-Rønne et al., 2010*; *Li et al., 2015*; *Murtaugh, 2008*; *Sharon et al., 2019*; *Sui et al., 2013*). Consistent with the temporal pattern of H3K27ac deposition at PSSE, transcript levels of PSSE-associated genes increased upon pancreatic lineage induction and peaked at the PP2 stage ( $p=1.8 \times 10^{-8}$ ; **Figure 2—figure supplement 1D**). Notably, expression of these genes sharply decreased in islets ( $p < 2.2 \times 10^{-16}$ ), underscoring the likely role of these genes in regulating pancreatic development but not mature islet function.

## Pancreatic progenitor-specific stretch enhancers are highly specific across T2D-relevant tissues and cell types

We next sought to understand the phenotypic consequences of PSSE activity in the context of T2D pathophysiology. Variants in accessible chromatin sites of PSSE genome-wide were enriched for T2D association (log enrichment = 2.85, 95% CI = <-20, 4.09). We determined enrichment of genetic variants for T2D-related quantitative endophenotypes within accessible chromatin sites of PSSE, as well as all pancreatic progenitor SE (not just progenitor-specific) and islet SE, using LD score regression (*Bulik-Sullivan et al., 2015*; *Finucane et al., 2015*). As expected based on prior observations (*Parker et al., 2013*; *Pasquali et al., 2014*), we observed enrichment ( $Z > 1.96$ ) of variants associated with quantitative traits related to insulin secretion and beta cell function within islet SE, exemplified by fasting proinsulin levels, HOMA-B, and acute insulin response ( $Z = 2.8$ ,  $Z = 2.6$ , and  $Z = 2.2$ , respectively; **Figure 2F**). Conversely, PSSE showed a trend toward depletion for these traits, although the estimates were not significant. We further tested for enrichment in the proportion of variants in PSSE and islet SE nominally associated ( $p < 0.05$ ) with beta cell function traits compared to background variants. There was significant enrichment of beta cell trait association among islet SE





**Figure 2.** Candidate target genes of pancreatic progenitor-specific stretch enhancers regulate developmental processes. (A) Schematic illustrating identification of pancreatic progenitor-specific stretch enhancers (PSSE). (B) Heatmap showing density of H3K27ac ChIP-seq and ATAC-seq reads at PSSE, centered on overlapping H3K27ac and ATAC-seq peaks, respectively, and spanning 5 kb in ES, DE, GT, PP1, PP2, and islets. PSSE coordinates in **Figure 2—source data 1**. (C) Percentage of PSSE exhibiting indicated chromatin states at defined developmental stages and in islets. (D) Percentage of PSSE containing transcription factor binding sites in PP2. *Figure 2 continued on next page*

Figure 2 continued

of PSSE overlapping with at least one ChIP-seq peak at PP2 for the indicated transcription factors. Enrichment analysis comparing observed and expected overlap based on random genomic regions of the same size and located on the same chromosome averaged over 10,000 iterations ( $***p < 1 \times 10^{-4}$ ; permutation test). (E) Gene ontology analysis for nearest expressed genes (fragments per kilobase per million fragments mapped (FPKM)  $\geq 1$  at PP2) to the 492 PSSE. See also **Figure 2—source data 2**. (F) Enrichment (LD score regression coefficient z-scores) of T2D, developmental, and metabolic GWAS trait-associated variants at accessible chromatin sites in PSSE as compared with PP2 and islet stretch enhancers. Significant enrichment was identified within accessible chromatin at PP2 stretch enhancers for lean type 2 diabetes ( $Z = 2.06$ ,  $*p = 3.94 \times 10^{-2}$ ), at PP2 stretch enhancers for type 2 diabetes ( $Z = 3.57$ ,  $***p = 3.52 \times 10^{-4}$ ), at islet stretch enhancers for type 2 diabetes ( $Z = 2.78$ ,  $**p = 5.46 \times 10^{-3}$ ), at islet stretch enhancers for fasting proinsulin levels ( $Z = 2.83$ ,  $**p = 4.61 \times 10^{-3}$ ), at islet stretch enhancers for HOMA-B ( $Z = 2.58$ ,  $**p = 9.85 \times 10^{-3}$ ), at PP2 stretch enhancers for disposition index ( $Z = 2.18$ ,  $*p = 2.94 \times 10^{-2}$ ), at islet stretch enhancers for acute insulin response ( $Z = 2.24$ ,  $*p = 2.51 \times 10^{-2}$ ), at islet stretch enhancers for HbA1c ( $Z = 1.98$ ,  $*p = 4.72 \times 10^{-2}$ ), and at islet stretch enhancers for fasting glucose levels ( $Z = 2.64$ ,  $**p = 8.31 \times 10^{-3}$ ). See also **Figure 2—source data 3** and **Figure 2—figure supplement 1**.

The online version of this article includes the following source data and figure supplement(s) for figure 2:

**Source data 1.** Chromosomal coordinates of pancreatic progenitor-specific stretch enhancers (PSSE).

**Source data 2.** Enriched gene ontology terms for PSSE-associated genes.

**Source data 3.** Proportion of variants nominally associated with beta cell functional traits.

**Source data 4.** Tissue identity of downloaded data from ROADMAP consortium.

**Figure supplement 1.** Characterization of pancreatic progenitor-specific stretch enhancers.

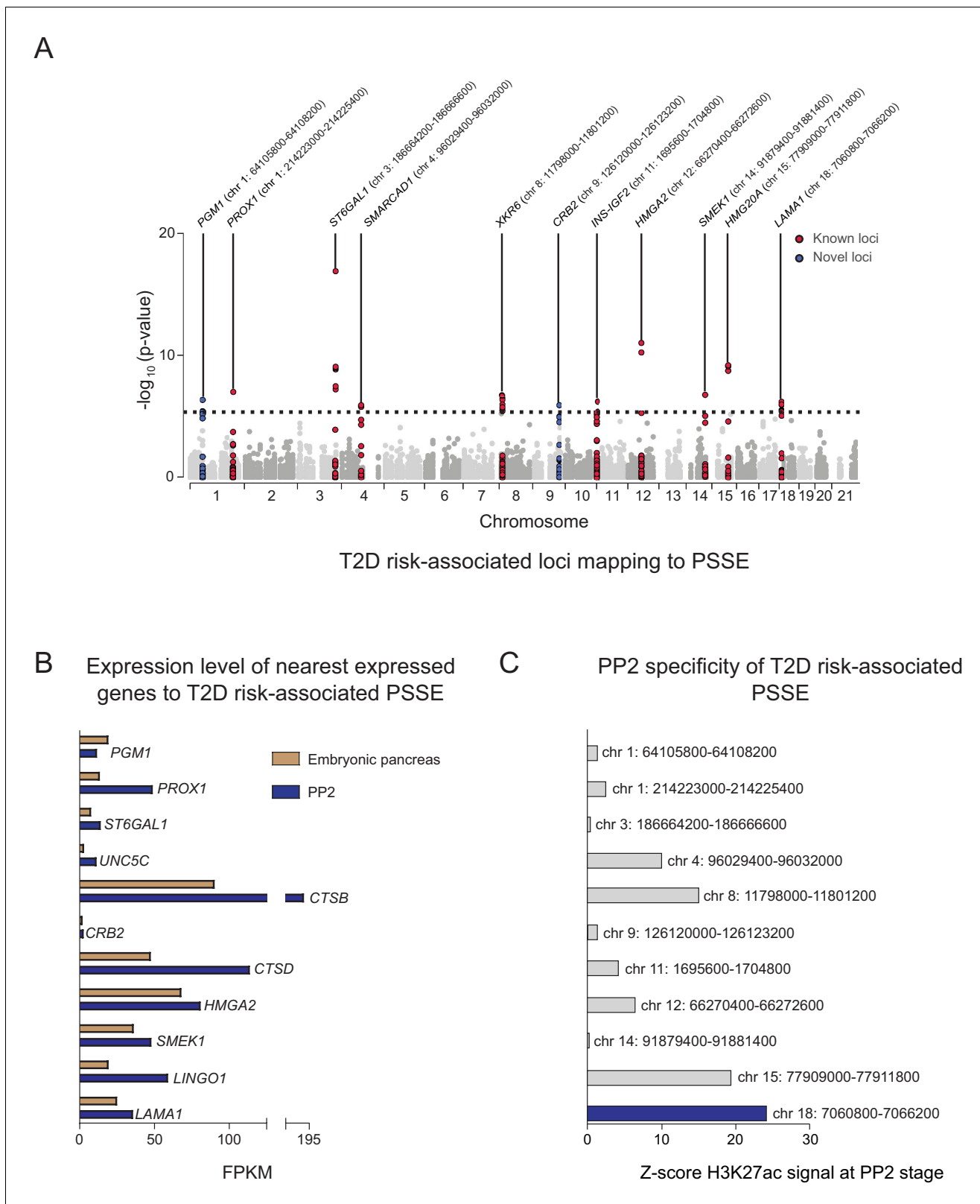
variants ( $\chi^2$  test;  $p < 0.05$  for all beta cell functional traits except for insulin secretion rate), but no corresponding enrichment for PSSE (**Figure 2—source data 3**).

A prior study found that variants at the *LAMA1* locus had stronger effects on T2D risk among lean relative to obese cases (Perry et al., 2012). Since we identified a PSSE at the *LAMA1* locus, we postulated that variants in PSSE collectively might have differing impact on T2D risk in cases segregated by BMI. We therefore tested PSSE, as well as pancreatic progenitor SE and islet SE, for enrichment of T2D association using GWAS of lean and obese T2D (Perry et al., 2012), using LD score regression (Bulik-Sullivan et al., 2015; Finucane et al., 2015). We observed nominally significant enrichment of variants in pancreatic progenitor SE for T2D among lean cases ( $Z = 2.1$ ). Variants in PSSE were mildly enriched for T2D among lean ( $Z = 1.1$ ) and depleted among obese ( $Z = -0.70$ ) cases, although neither estimate was significant. By comparison, islet SE showed positive enrichment for T2D among both lean ( $Z = 1.9$ ) and obese cases ( $Z = 1.3$ ; **Figure 2F**). Together, these results suggest that PSSE may affect T2D risk in a manner distinct from islet SE function.

Having observed little evidence for enrichment of PSSE variants for traits related to beta cell function, we asked whether the enrichment of PSSE for T2D-associated variants could be explained by PSSE activity in T2D-relevant tissues and cell types outside the pancreas. We assessed PSSE activity by measuring H3K27ac signal in 95 representative tissues and cell lines from the ENCODE and Epigenome Roadmap projects (Kundaje et al., 2015). Interestingly, there was group-wide specificity of PSSE to pancreatic progenitors relative to other cells and tissues including those relevant to T2D, such as adipose tissue, skeletal muscle, and liver (**Figure 2—figure supplement 1E** and **Figure 2—source data 4**). Since gene regulation in adipocyte precursors also contributes to T2D risk (Clausnitzer et al., 2014), we further examined PSSE specificity with respect to chromatin states during adipogenesis, using data from human adipose stromal cell differentiation stages (hASC1-4) (Mikkelsen et al., 2010; Varshney et al., 2017). PSSE exhibited virtually no active chromatin during adipogenesis (9, 8, 6, and 8 out of the 492 PSSE were active enhancers in hASC-1, hASC-2, hASC-3, and hASC-4, respectively; **Figure 2—figure supplement 1F**). These findings identify PSSE as highly pancreatic progenitor-specific across T2D-relevant tissues and cell types.

## Identification of pancreatic progenitor-specific stretch enhancers harboring T2D-associated variants

Given the relative specificity of PSSE to pancreatic progenitors, we next sought to identify T2D-associated variants in PSSE at specific loci which may affect pancreatic development. We therefore identified variants in PSSE with evidence of T2D association (at  $p = 4.7 \times 10^{-6}$ ) after correcting for the total number of variants in PSSE genome-wide ( $n = 10,738$ ). In total there were 49 variants in PSSE with T2D association exceeding this threshold mapping to 11 loci (**Figure 3A**). This included variants at nine loci with known genome-wide significant T2D association (*PROX1*, *ST6GAL1*, *SMARCD1*,



**Figure 3.** Identification of T2D risk variants associated with pancreatic progenitor-specific stretch enhancers. **(A)** Manhattan plot showing T2D association p-values (from *Mahajan et al., 2018*) for 10,738 variants mapping within PSSE. The dotted line shows the threshold for Bonferroni correction ( $p=4.66 \times 10^{-6}$ ). Novel loci identified with this threshold and mapping at least 500 kb away from a known locus are highlighted in blue. Chromosomal coordinates of T2D-associated PSSE are indicated. **(B)** mRNA levels (measured in fragments per kilobase per million fragments mapped) *Figure 3 continued on next page*



Figure 3 continued

[FPKM]) at PP2 (blue) and in human embryonic pancreas (54 and 58 days gestation, gold) of nearest expressed (FPKM  $\geq 1$ ) gene at PP2 for PSSE harboring T2D variants identified in A. (C) PP2 specificity of H3K27ac signal at PSSE harboring T2D variants identified in A. Z-score comparing H3K27ac signal at PP2 to H3K27ac signal in tissues and cell lines from the ENCODE and Epigenome Roadmap projects. See also **Figure 3—figure supplement 1**.

The online version of this article includes the following figure supplement(s) for figure 3:

**Figure supplement 1.** Activity of T2D risk-associated pancreatic progenitor-specific stretch enhancers across human tissues.

*XKR6*, *INS-IGF2*, *HMG2A*, *SMEK1*, *HMG20A*, and *LAMA1*), as well as at two previously unreported loci with sub-genome-wide significant association, *CRB2* and *PGM1*. To identify candidate target genes of the T2D-associated PSSE in pancreatic progenitors, we analyzed the expression of all genes within the same topologically associated domain (TAD) as the PSSE in PP2 cells and in primary human embryonic pancreas tissue (**Figure 3B** and **Figure 3—figure supplement 1A**). These expressed genes are candidate effector transcripts of T2D-associated variants in pancreatic progenitors.

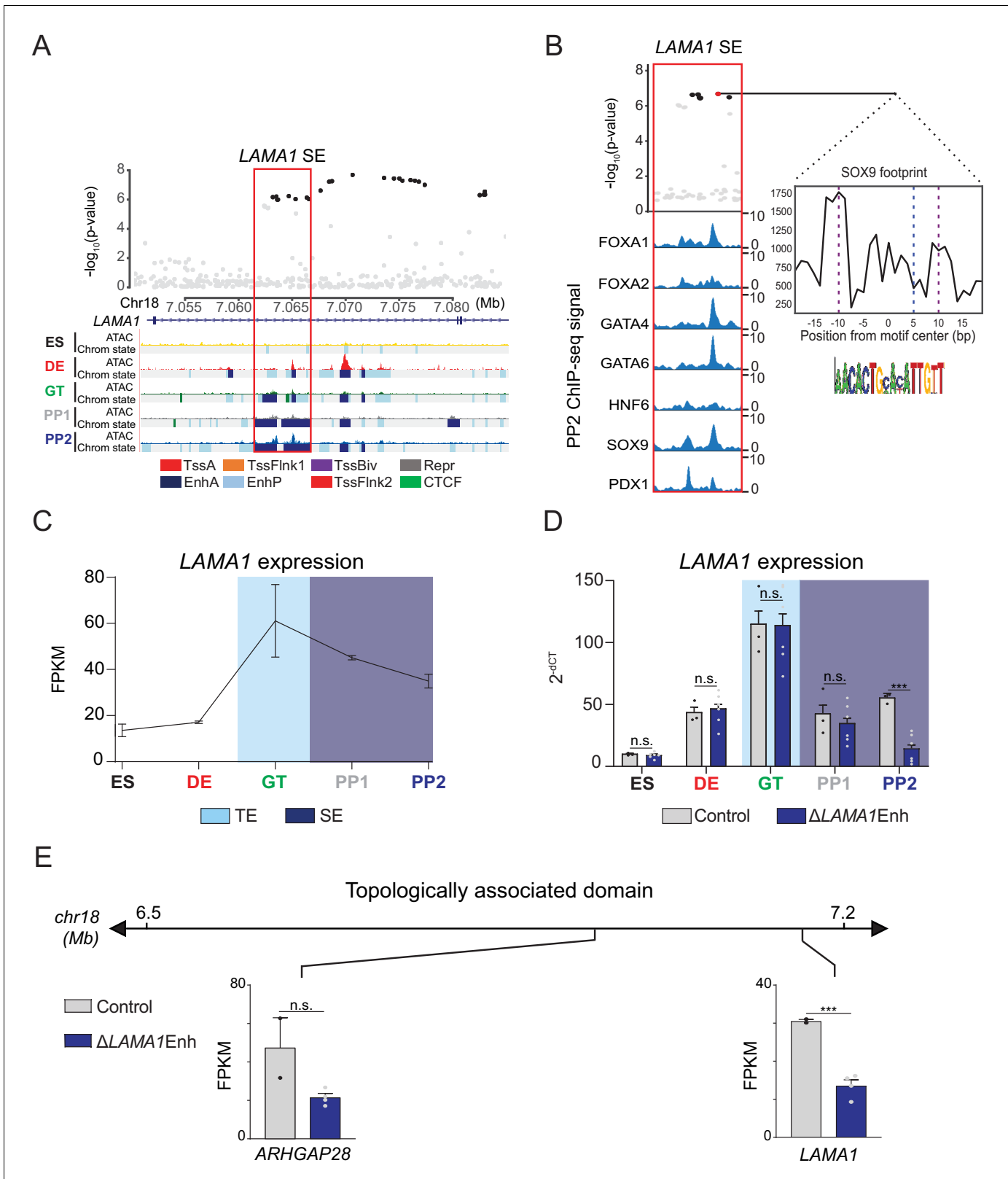
As many pancreatic progenitor SE remain poised in mature islets (**Figure 2C**), we considered whether T2D-associated variants in PSSE could have gene regulatory function in islets that is re-activated in the disease state. We therefore assessed overlap of PSSE variants with accessible chromatin of islets from T2D donors (*Khetan et al., 2018*). None of the strongly T2D-associated variants in PSSE ( $p=4.7 \times 10^{-6}$ ) overlapped an islet accessible chromatin site in T2D islets, arguing against the relevance of PSSE in broadly regulating islet gene activity during T2D.

### A pancreatic progenitor-specific stretch enhancer at *LAMA1* harbors T2D risk variants and regulates *LAMA1* expression selectively in pancreatic progenitors

Variants in a PSSE at the *LAMA1* locus were associated with T2D at genome-wide significance (**Figure 3A**), and *LAMA1* was highly expressed in the human embryonic pancreas (**Figure 3B**). Furthermore, the activity of the PSSE at the *LAMA1* locus was almost exclusively restricted to pancreatic progenitors (**Figure 3—figure supplement 1B,C**), and was further among the most progenitor-specific across all PSSE harboring T2D risk variants (**Figure 3C**). In addition, reporter gene assays in zebrafish embryos have shown that this enhancer drives gene expression specific to pancreatic progenitors in vivo (*Cebola et al., 2015*). We therefore postulated that the activity of T2D-associated variants within the *LAMA1* PSSE is relevant for gene regulation in pancreatic progenitors, and we sought to characterize the *LAMA1* PSSE in greater depth.

Multiple T2D-associated variants mapped within the *LAMA1* PSSE, and these variants were further in the 99% credible set in fine-mapping data from the DIAMANTE consortium (*Mahajan et al., 2018; Figure 4A*). No other variants in the 99% credible set mapped in an accessible chromatin site active in islets from either non-diabetic or T2D samples. The PSSE is intronic to the *LAMA1* gene and contains regions of poised chromatin and TE at prior developmental stages (**Figure 4A**). Consistent with its stepwise genesis as a SE throughout development, regions of open chromatin within the *LAMA1* PSSE were already present at the DE and GT stages. Furthermore, pancreatic lineage-determining transcription factors, such as *FOXA1*, *FOXA2*, *GATA4*, *GATA6*, *HNF6*, *SOX9*, and *PDX1*, were all bound to the PSSE at the PP2 stage (**Figure 4B**). Among credible set variants in the *LAMA1* PSSE, rs10502347 overlapped an ATAC-seq peak as well as ChIP-seq sites for multiple pancreatic lineage-determining transcription factors. Additionally, rs10502347 directly coincided with a *SOX9* footprint identified in ATAC-seq data from PP2 cells, and the T2D risk allele C is predicted to disrupt *SOX9* binding (**Figure 4B**). Consistent with the collective endophenotype association patterns of PSSE (**Figure 2F**), rs10502347 showed no association with beta cell function ( $p=0.81$ , 0.23, 0.46 for fasting proinsulin levels, HOMA-B, and acute insulin response, respectively; **Figure 4—figure supplement 1A**). Thus, T2D variant rs10502347 is predicted to affect the binding of pancreatic transcription factors and does not appear to affect beta cell function.

Enhancers can control gene expression over large genomic distances, and therefore their target genes cannot be predicted based on proximity alone. To directly assess the function of the *LAMA1* PSSE in regulating gene activity, we utilized CRISPR-Cas9-mediated genome editing to generate



**Figure 4.** A T2D risk-associated *LAMA1* pancreatic progenitor-specific stretch enhancer regulates *LAMA1* expression specifically in pancreatic progenitors. (A) (Top) Locus plots showing T2D association p-values for variants in a 35 kb window (hg19 chr18:7,050,000–7,085,000) at the *LAMA1* locus and *LAMA1* PSSE (red box). Fine mapped variants within the 99% credible set for the *LAMA1* locus are colored black. All other variants are colored light gray. (Bottom) Chromatin states and ATAC-seq signal in ES, DE, GT, PP1, and PP2. TssA, active promoter; TssFlnk, flanking transcription start site; Figure 4 continued on next page

## Figure 4 continued

TssBiv, bivalent promoter; Repr, repressed; EnhA, active enhancer; EnhP, poised enhancer. (B) FOXA1, FOXA2, GATA4, GATA6, HNF6, SOX9, and PDX1 ChIP-seq profiles at the *LAMA1* PSSE in PP2. The variant rs10502347 (red) overlaps transcription factor binding sites and a predicted ATAC-seq footprint for the SOX9 sequence motif. Purple dotted lines indicate the core binding profile of the average SOX9 footprint genome-wide and the blue dotted line indicates the position of rs10502347 within the SOX9 motif. (C) *LAMA1* mRNA expression at each developmental stage determined by RNA-seq, measured in fragments per kilobase per million fragments mapped (FPKM). Data shown as mean  $\pm$  S.E.M. (n = 3 replicates from independent differentiations). Light blue and purple indicate classification of the *LAMA1* PSSE as typical enhancer (TE) and stretch enhancer (SE), respectively. (D) *LAMA1* mRNA expression at each developmental stage determined by qPCR in control and  $\Delta$ *LAMA1*Enh cells. Data are shown as mean  $\pm$  S.E.M. (n = 3 replicates from independent differentiations for control cells.  $\Delta$ *LAMA1*Enh cells represent combined data from two clonal lines with three replicates for each line from independent differentiations. n = 3 technical replicates for each sample; p=0.319, 0.594, 0.945, 0.290, and  $<1 \times 10^{-6}$  for comparisons in ES, DE, GT, PP1, and PP2, respectively; student's t-test, two sided; \*\*\*p<0.001, n.s., not significant). Light blue and purple indicate classification of the *LAMA1* PSSE as TE and SE, respectively. Each plotted point represents the average of technical replicates for each differentiation. (E) mRNA expression determined by RNA-seq at PP2 of genes expressed in either control or  $\Delta$ *LAMA1*Enh cells (FPKM  $\geq 1$  at PP2) and located within the same topologically associated domain as *LAMA1*. Data are shown as mean FPKM  $\pm$  S.E.M. (n = 2 replicates from independent differentiations for control cells.  $\Delta$ *LAMA1*Enh cells represent combined data from two clonal lines with two replicates for each line from independent differentiations. p adj. = 0.389 and  $8.11 \times 10^{-3}$  for *ARHGAP28* and *LAMA1*, respectively; DESeq2). See also **Figure 4—figure supplements 1 and 2**.

The online version of this article includes the following source data and figure supplement(s) for figure 4:

**Source data 1.** Genes downregulated in  $\Delta$ *LAMA1*Enh PP2 stage cells compared to control cells (p adj. <0.05).

**Source data 2.** Genes upregulated in  $\Delta$ *LAMA1*Enh PP2 stage cells compared to control cells (p adj. <0.05).

**Figure supplement 1.** Deletion of the *LAMA1*-associated pancreatic progenitor-specific enhancer does not affect pancreatic lineage specification.

**Figure supplement 2.** Deletion of *LAMA1* does not affect pancreatic lineage specification.

two independent clonal human hESC lines harboring homozygous deletions of the *LAMA1* PSSE (hereafter referred to as  $\Delta$ *LAMA1*Enh; **Figure 4—figure supplement 1B**). We examined *LAMA1* expression in  $\Delta$ *LAMA1*Enh compared to control cells throughout stages of pancreatic differentiation. Consistent with the broad expression of *LAMA1* across developmental and mature tissues, control cells expressed *LAMA1* at all stages (**Figure 4C**). *LAMA1* was expressed at similar levels in  $\Delta$ *LAMA1*Enh and control cells at early developmental stages, but was significantly reduced in PP2 cells derived from  $\Delta$ *LAMA1*Enh clones (p=0.319, 0.594, 0.945, 0.290, and  $<1 \times 10^{-6}$  for comparisons in ES, DE, GT, PP1, and PP2, respectively; **Figure 4D**). To next investigate whether the *LAMA1* PSSE regulates other genes at this locus, we utilized Hi-C datasets from PP2 cells to identify topologically associated domains (TADs). We then examined expression of genes mapping in the same TAD as the *LAMA1* PSSE. *ARHGAP28* was the only other expressed gene within the TAD, and albeit not significantly different from controls (p.adj >0.05), showed a trend toward lower expression in  $\Delta$ *LAMA1*Enh PP2 cells (**Figure 4E**), raising the possibility that *ARHGAP28* is an additional target gene of the *LAMA1* PSSE. Together, these results demonstrate that while *LAMA1* itself is broadly expressed across developmental stages, the T2D-associated PSSE regulates *LAMA1* expression specifically in pancreatic progenitors.

To determine whether deletion of the *LAMA1* PSSE affects pancreatic development, we generated PP2 stage cells from  $\Delta$ *LAMA1*Enh and control hESC lines and analyzed pancreatic cell fate commitment by flow cytometry and immunofluorescence staining for PDX1 and NKX6.1 (**Figure 4—figure supplement 1C,D**). At the PP2 stage,  $\Delta$ *LAMA1*Enh and control cultures contained similar percentages of PDX1- and NKX6.1-positive cells. Furthermore, mRNA expression of *PDX1*, *NKX6.1*, *PROX1*, *PTF1A*, and *SOX9* was either unaffected or only minimally reduced (p adj. =  $3.56 \times 10^{-2}$ , 0.224, 0.829,  $8.14 \times 10^{-2}$ , and 0.142, for comparisons of *PDX1*, *NKX6.1*, *PROX1*, *PTF1A*, and *SOX9* expression, respectively; **Figure 4—figure supplement 1E**), and the overall gene expression profiles as determined by RNA-seq were similar in  $\Delta$ *LAMA1*Enh and control PP2 cells (**Figure 4—figure supplement 1F** and **Figure 4—source datas 1 and 2**). To examine effects of complete *LAMA1* loss-of-function, we additionally generated a hESC line harboring a deletion of the *LAMA1* coding sequences (hereafter referred to as  $\Delta$ *LAMA1*; **Figure 4—figure supplement 2A,B**), and produced PP2 stage cells. Similar to  $\Delta$ *LAMA1*Enh cultures,  $\Delta$ *LAMA1* and control PP2 stage cultures contained similar numbers of PDX1- and NKX6.1-positive cells (**Figure 4—figure supplement 2C,D**). Likewise, mRNA expression of *PDX1*, *NKX6.1*, *PROX1*, *PTF1A*, and *SOX9* was similar in  $\Delta$ *LAMA1* and control PP2 cells (p= $4.3 \times 10^{-2}$ , 0.19, 0.16, 0.17, and  $8.7 \times 10^{-2}$ , respectively; **Figure 4—figure supplement 2E**). These findings indicate that in vitro pancreatic lineage induction is unperturbed in both

$\Delta$ LAMA1Enh cells exhibiting reduced LAMA1 expression, as well as  $\Delta$ LAMA1 cells where LAMA1 coding sequences are disrupted.

## Pancreatic progenitor-specific stretch enhancers at the CRB2 and PGM1 loci harbor T2D-associated variants

Multiple variants with evidence for T2D association in PSSE mapped outside of known risk loci, such as those mapping to *CRB2* and *PGM1* (Figure 3A). As with the *LAMA1* PSSE, PSSE harboring variants at *CRB2* and *PGM1* were intronic to their respective genes, contained ATAC-seq peaks, and bound pancreatic lineage-determining transcription factors FOXA1, FOXA2, GATA4, GATA6, HNF6, SOX9, and PDX1 (Figure 5A,B and Figure 5—figure supplement 1A,B). Compared to the *LAMA1* PSSE, *CRB2* and *PGM1* PSSE were less specific to pancreatic progenitors and exhibited significant H3K27ac signal in several other tissues and cell types, most notably brain, liver, and the digestive tract (Figure 5—figure supplement 1C,D).

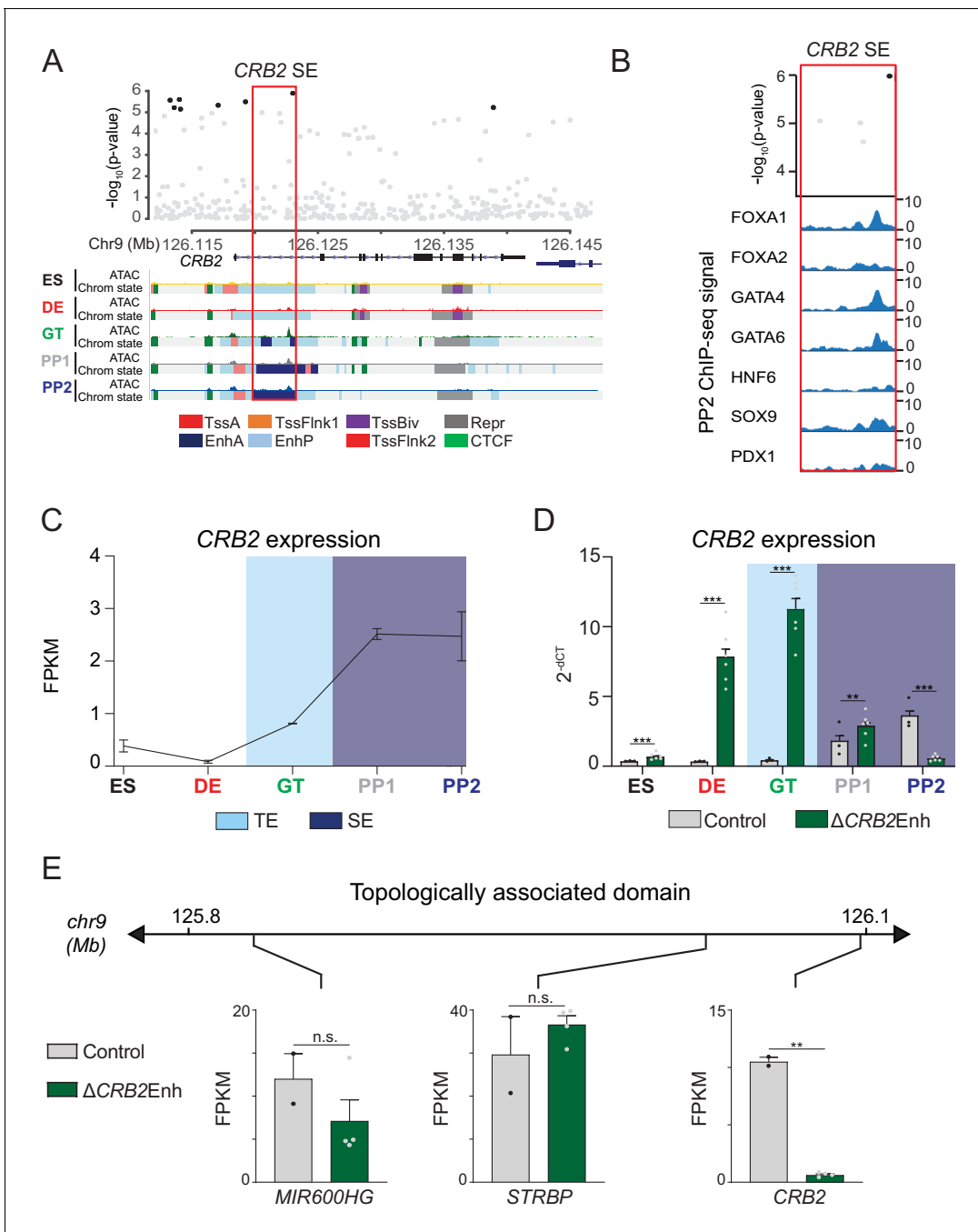
*CRB2* is a component of the Crumbs protein complex involved in the regulation of cell polarity and neuronal, heart, retinal, and kidney development (Alves et al., 2013; Bulgakova and Knust, 2009; Dudok et al., 2016; Jiménez-Amilburu and Stainier, 2019; Slavotinek et al., 2015). However, its role in pancreatic development is unknown. To determine whether the *CRB2* PSSE regulates *CRB2* expression in pancreatic progenitors, we generated two independent hESC clones with homozygous deletions of the *CRB2* PSSE (hereafter referred to as  $\Delta$ CRB2Enh; Figure 5—figure supplement 2A) and performed pancreatic differentiation of  $\Delta$ CRB2Enh and control hESC lines. In control cells, *CRB2* was first expressed at the GT stage and increased markedly at the PP1 stage (Figure 5C). This pattern of *CRB2* expression is consistent with H3K27ac deposition at the *CRB2* PSSE in GT stage cells and classification as a SE at the PP1 and PP2 stages (Figure 5A and Figure 5—figure supplement 1C). In  $\Delta$ CRB2Enh cells, we observed upregulation of *CRB2* expression at earlier developmental stages, in particular at the DE and GT stages ( $p < 1 \times 10^{-6}$  at both stages; Figure 5D), suggesting that the *CRB2* PSSE may be associated with repressive transcriptional complexes prior to pancreas induction. At the PP2 stage, *CRB2* expression was significantly reduced in  $\Delta$ CRB2Enh cells ( $p$  adj. =  $3.51 \times 10^{-3}$ ; Figure 5D), whereas the expression of other genes in the same TAD was not affected ( $p$  adj.  $\geq 0.05$ ; Figure 5E). Thus, the *CRB2* PSSE specifically regulates *CRB2* and is required for *CRB2* expression in pancreatic progenitors.

Phenotypic characterization of PP2 stage  $\Delta$ CRB2Enh cultures revealed similar percentages of PDX1- and NKX6.1-positive cells as in control cultures (Figure 5—figure supplement 2B,C). The expression of pancreatic transcription factors and global gene expression profiles were also similar in  $\Delta$ CRB2Enh and control PP2 cells (Figure 5—figure supplement 2D,E and Figure 5—source data 1). Likewise, *CRB2* deletion hESCs ( $\Delta$ CRB2) differentiated to the PP2 stage (Figure 5—figure supplement 3A,B) produced similar numbers of PDX1- and NKX6.1-positive cells and expressed pancreatic transcription factors at levels similar to control cells (Figure 5—figure supplement 3C–E). Thus, neither deletion of the *CRB2* PSSE nor the *CRB2* gene overtly impairs pancreatic lineage induction in the in vitro hESC differentiation system.

## lama1 and crb2 zebrafish morphants display annular pancreas and decreased beta cell mass

Based on their classification as extracellular matrix and cell polarity proteins, respectively, Laminin (encoded by *LAMA1*) and *CRB2* are predicted to regulate processes related to tissue morphogenesis, such as cell migration, tissue growth, and cell allocation within the developing organ. Furthermore, PSSE in general were enriched for proximity to genes involved in tissue morphogenesis (Figure 2E), suggesting that T2D risk variants acting within PSSE could have roles in pancreas morphogenesis. Since cell migratory processes and niche-specific signaling events are not fully modeled during hESC differentiation, we reasoned that the in vitro pancreatic differentiation system might not be suitable for studying Laminin and *CRB2* function in pancreatic development.

To circumvent these limitations, we employed zebrafish as an in vivo vertebrate model to study the effects of reduced *lama1* and *crb2* levels on pancreatic development. The basic organization and cell types in the pancreas as well as the genes regulating endocrine and exocrine pancreas development are highly conserved between zebrafish and mammals (Dong et al., 2008; Field et al., 2003; Kimmel et al., 2015). To analyze pancreatic expression of Laminin and Crb proteins, we used *Tg*



**Figure 5.** A T2D risk-associated *CRB2* pancreatic progenitor-specific stretch enhancer regulates *CRB2* expression specifically in pancreatic progenitors. (A) (Top) Locus plots showing T2D association p-values for variants in a 35 kb window (hg19 chr9:126,112,000–126,147,000) at the *CRB2* locus and *CRB2* PSSE (red box). Fine mapped variants within the 99% credible set for the novel *CRB2* locus are colored black. All other variants are colored light gray. (Bottom) Chromatin states and ATAC-seq signal in ES, DE, GT, PP1, and PP2. TssA, active promoter; TssFlnk, flanking transcription start site; TssBiv, bivalent promoter; Repr, repressed; EnhA, active enhancer; EnhP, poised enhancer. (B) FOXA1, FOXA2, GATA4, GATA6, HNF6, SOX9, and PDX1 ChIP-seq profiles at the *CRB2* PSSE in PP2. The variant rs2491353 (black) overlaps with transcription factor binding sites. (C) *CRB2* mRNA expression at each developmental stage determined by RNA-seq, measured in fragments per kilobase per million fragments mapped (FPKM). Data shown as mean ± S.E.M. (n = 3 replicates from independent differentiations). Light blue and purple indicate classification of the *CRB2* PSSE as typical enhancer (TE) and stretch enhancer (SE), respectively. Plotted points represent average of technical replicates for each differentiation. (D) *CRB2* mRNA expression at each developmental stage determined by qPCR in control and  $\Delta$ *CRB2*Enh cells. Data are shown as mean ± S.E.M. (n = 3 replicates from independent differentiations for control cells.  $\Delta$ *CRB2*Enh cells represent combined data from two clonal lines with three replicates for each line from independent differentiations. n = 3 technical replicates for each sample;  $p=7.03 \times 10^{-4}, <1 \times 10^{-6}, <1 \times 10^{-6}, 1.46 \times 10^{-2},$  and  $<1 \times 10^{-6}$  for comparisons in ES, DE, GT, PP1, and PP2, respectively; student's t-test, two sided; \*\*\* $p<0.001$  \*\* $p<0.01$ ). Light blue and purple indicate classification of the *CRB2* PSSE as TE (Figure 5 continued on next page

Figure 5 continued

and SE, respectively. Each plotted point represents the average of technical replicates for each differentiation. (E) mRNA expression determined by RNA-seq at PP2 of genes expressed in either control or  $\Delta$ CRB2Enh cells (FPKM  $\geq$  1 at PP2) and located within the same topologically associated domain as CRB2. Data are shown as mean FPKM  $\pm$  S.E.M. (n = 2 replicates from independent differentiations for control cells.  $\Delta$ CRB2Enh cells represent combined data from two clonal lines with two replicates for each line from independent differentiations. p adj. = 0.158, 1.00, and  $3.51 \times 10^{-3}$ , for *MIR600HG*, *STRBP*, and *CRB2*, respectively; DESeq2; \*\*p<0.01, n.s., not significant). See also **Figure 5—figure supplements 1–3**.

The online version of this article includes the following source data and figure supplement(s) for figure 5:

**Source data 1.** Genes downregulated in  $\Delta$ CRB2Enh PP2 stage cells compared to control cells (p adj. <0.05).

**Figure supplement 1.** Activity of CRB2- and PGM1-associated pancreatic progenitor-specific stretch enhancers across human tissues.

**Figure supplement 2.** Deletion of the CRB2-associated pancreatic progenitor-specific enhancer does not affect pancreatic lineage specification.

**Figure supplement 3.** Deletion of CRB2 does not affect pancreatic lineage specification.

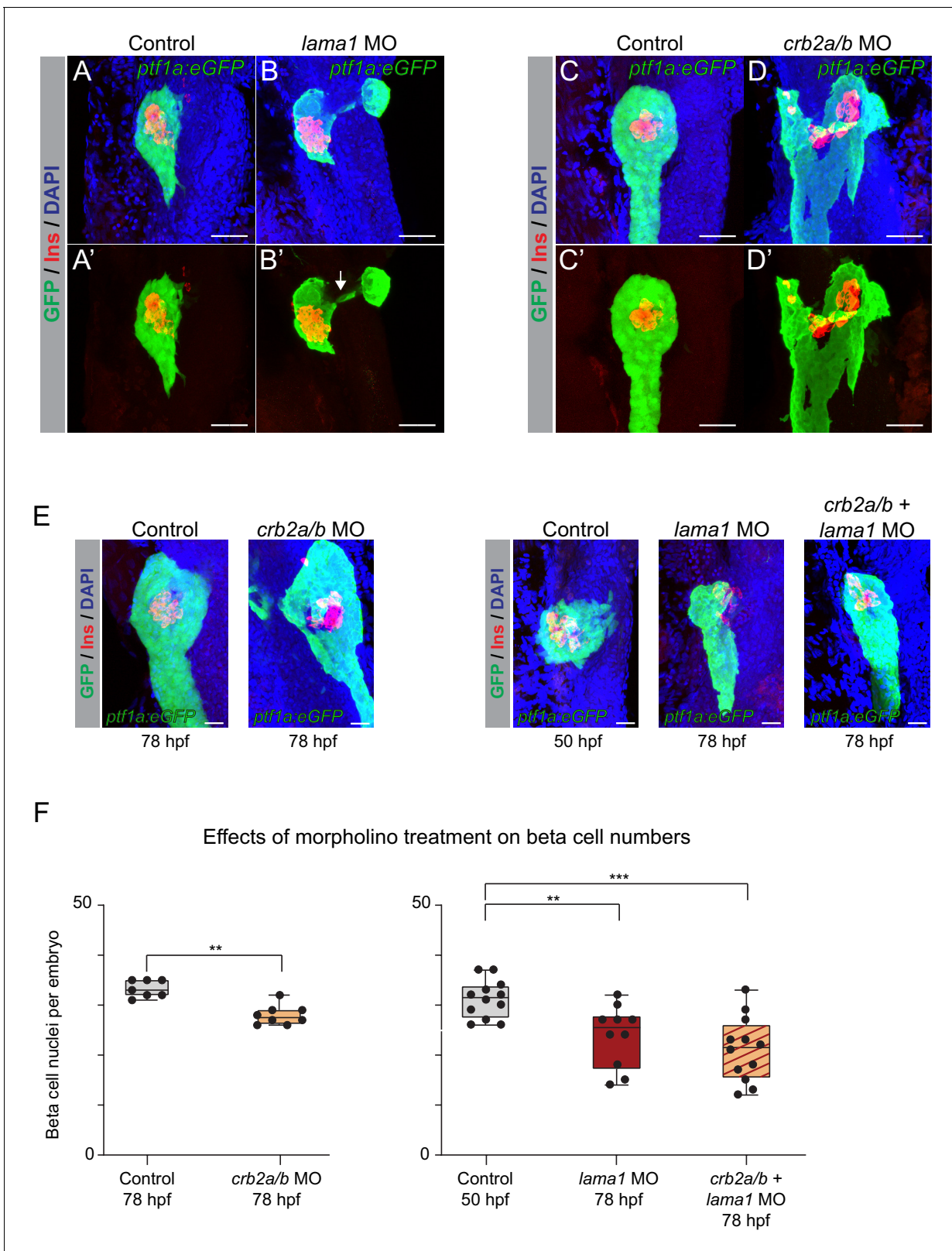
(*ptf1a:eGFP*)<sup>h1</sup> embryos to visualize pancreatic progenitor cells and the acinar pancreas by eGFP expression. At 48 hr post-fertilization (hpf), both Laminin and Crb proteins were detected in the eGFP and Nkx6.1 co-positive pancreatic progenitor cell domain (**Figure 6—figure supplement 1A, B**).

To determine the respective functions of *lama1* and *crb2* in pancreatic development, we performed knockdown experiments using anti-sense morpholinos directed against *lama1* and the two zebrafish *crb2* genes, *crb2a* and *crb2b* (Omori and Malicki, 2006; Pollard et al., 2006). Knockdown efficiency of each morpholino was validated using whole-mount immunohistochemistry. We observed significant reduction of Laminin staining throughout the pancreatic progenitor cell domain in embryos treated with morpholinos targeting *lama1* (**Figure 6—figure supplement 2A–D**). In embryos treated with morpholinos targeting *crb2a* or *crb2a* and *crb2b*, we observed loss of staining in the pancreatic progenitor cell domain using antibodies specific to Crb2a or antibodies detecting all Crb proteins, respectively (**Figure 6—figure supplement 3A–H**). Residual panCrb protein signal was observed in the dorsal pancreas, which may be the result of expression of Crb proteins other than Crb2a and Crb2b in this region.

Consistent with prior studies (Pollard et al., 2006), *lama1* morphants exhibited reduced body size and other gross anatomical defects at 78 hpf, whereas *crb2a/b* morphants appeared grossly normal. Both *lama1* and *crb2a/b* morphants displayed an annular pancreas (15 out of 34 *lama1* and 27 out of 69 *crb2a/b* morphants) characterized by pancreatic tissue partially or completely encircling the duodenum (**Figure 6A–D**), a phenotype indicative of impaired migration of pancreatic progenitors during pancreas formation. These findings suggest that both *lama1* and *crb2a/b* control cell migratory processes during early pancreatic development and that reduced levels of *lama1* or *crb2a/b* impair pancreas morphogenesis.

To gain insight into the effects of *lama1* and *crb2a/b* knockdown on pancreatic endocrine cell development, we examined beta cell numbers (insulin<sup>+</sup> cells) at 78 hpf. We also evaluated potential synergistic effects of combined *lama1* and *crb2a/b* knockdown. To account for the reduction in body and pancreas size in *lama1* morphants, we compared cell numbers in 78 hpf *lama1* morphants with 50 hpf control embryos, which have a similarly sized acinar compartment as 78 hpf *lama1* morphants. Beta cell numbers were significantly reduced in both *lama1* and *crb2a/b* morphants (p=8.0  $\times$  10<sup>-3</sup> and 4.0  $\times$  10<sup>-3</sup> for comparisons of *lama1* and *crb2a/b* morphants, respectively; **Figure 6E,F**), as well as in morphants with a combined knockdown of *lama1* and *crb2a/b* (p=2.0  $\times$  10<sup>-4</sup>; **Figure 6F**), showing that reduced *lama1* and *crb2a/b* levels, both individually and in combination, impair beta cell development. Furthermore, we found that nearly all *lama1*, *crb2a/b*, and combined *lama1* and *crb2a/b* morphants without an annular pancreas had reduced beta cell numbers, indicating independent roles of *lama1* and *crb2* in pancreas morphogenesis and beta cell differentiation. Finally, to investigate the contributions of individual *crb2* genes to the observed phenotype, we performed knockdown experiments using morpholinos against *crb2a* and *crb2b* alone. Only *crb2b* morphants showed a significant reduction in beta cell numbers (p=4.4  $\times$  10<sup>-2</sup>; **Figure 6—figure supplement 4**), suggesting that *crb2b* is the predominant *crb2* gene required for beta cell development. Combined, these findings demonstrate that *lama1* and *crb2* are regulators of pancreas morphogenesis and beta cell development in vivo.





**Figure 6.** *lama1* and *crb2* regulate pancreas morphogenesis and beta cell differentiation. (A,B) Representative 3D renderings of *Tg(ptf1a:eGFP)<sup>h1</sup>* control zebrafish embryos (A,A') and *lama1* morphants (B,B') stained with DAPI (nuclei, blue) and antibody against insulin (red);  $n \geq 15$  embryos per condition. To account for reduced acinar pancreas size in *lama1* morphants, control embryos were imaged at 50 hr post fertilization (hpf) and *lama1* morphants at 78 hpf. 15 out of 34 *lama1* morphants displayed an annular pancreas with two acinar pancreas domains (green) connected (Figure 6 continued on next page

Figure 6 continued

behind the presumptive intestine (B', white arrow). Scale bar, 40  $\mu$ M. (C,D) Representative 3D renderings of 78 hpf *Tg(ptf1a:eGFP)<sup>h1</sup>* control zebrafish embryos (C,C') and *crb2a/b* morphants (D,D') stained with DAPI (nuclei, blue) and antibodies against insulin (red);  $n \geq 15$  embryos per condition. Twenty-seven out of 69 *crb2a/b* morphants displayed an annular pancreas with the acinar pancreas (green) completely surrounding the presumptive intestine. Scale bar, 40  $\mu$ M. (E) Representative 3D renderings of *Tg(ptf1a:eGFP)<sup>h1</sup>* control zebrafish embryos and *crb2a/b*, *lama1*, or *crb2a/b + lama1* morphants stained with DAPI (nuclei, blue) and antibody against insulin (red). All embryos were imaged at 78 hpf except for controls to *lama1* and *crb2a/b + lama1* morphants, which were imaged at 50 hpf to account for reduced acinar pancreas size of *lama1* morphants. Scale bar, 20  $\mu$ M. (F) Quantification of beta (insulin<sup>+</sup>) cell nuclei per embryo from experiment in (E).  $p$  adj. =  $4.0 \times 10^{-3}$ ,  $8.0 \times 10^{-3}$ , and  $2.0 \times 10^{-4}$  for comparison of hpf 78 control ( $n = 7$  embryos) to hpf 78 *crb2a/b* ( $n = 8$ ), hpf 50 control ( $n = 12$ ) to hpf 78 *lama1* ( $n = 10$ ), or *crb2a/b + lama1* ( $n = 12$ ) morphants, respectively; ANOVA-Dunnett's multiple comparison test; \*\*\* $p < 0.001$  \*\* $p < 0.01$ . 5 out of 8 *crb2a/b*, 3 out of 10 *lama1*, and 9 out of 12 *crb2a/b + lama1* morphants displayed an annular pancreas. MO, morpholino; Control, standard control morpholino. See also **Figure 6—figure supplements 1–4**. The online version of this article includes the following figure supplement(s) for figure 6:

**Figure supplement 1.** Laminin and Crb are expressed in zebrafish pancreas progenitors.

**Figure supplement 2.** Validation of morpholinos targeting *lama1*.

**Figure supplement 3.** Validation of morpholinos targeting *crb2a* and *crb2b*.

**Figure supplement 4.** *crb2b* but not *crb2a* regulates pancreatic beta cell differentiation.

## Discussion

In this study, we identify T2D-associated variants localized within chromatin active in pancreatic progenitors but not islets or other T2D-relevant tissues, suggesting a novel mechanism whereby a subset of T2D risk variants specifically alters pancreatic developmental processes. We link T2D-associated enhancers active in pancreatic progenitors to the regulation of *LAMA1* and *CRB2* and demonstrate a functional requirement in zebrafish for *lama1* and *crb2* in pancreas morphogenesis and endocrine cell formation. Furthermore, we provide a curated list of T2D risk-associated enhancers and candidate effector genes for further exploration of how the regulation of developmental processes in the pancreas can predispose to T2D.

Our analysis identified 11 loci where T2D-associated variants mapped in SE specifically active in pancreatic progenitors. Among these loci was *LAMA1*, which has stronger effects on T2D risk in lean compared to obese individuals (Perry et al., 2012). We also found evidence that variants in PSSE collectively have stronger enrichment for T2D in lean individuals, although the small number of PSSE and limited sample size of the BMI-stratified T2D genetic data prohibits a more robust comparison. There was also a notable lack of enrichment among PSSE variants for association with traits related to insulin secretion and beta cell function. If T2D-associated variants in PSSE indeed confer diabetes susceptibility by affecting beta cell development, the question arises as to why variants associated with traits related to beta cell function are not enriched within PSSE. As genetic association studies of endophenotypes are based on data from non-diabetic subjects, a possible explanation is that variants affecting beta cell developmental processes have no overt phenotypic effect under physiological conditions and contribute to T2D pathogenesis only during the disease process.

Since the genomic position of enhancers and transcription factor binding sites is not well conserved between species (Villar et al., 2015), a human cell model is necessary to identify target genes of enhancers associated with disease risk. By employing enhancer deletion in hESCs, we demonstrate that T2D-associated PSSE at the *LAMA1* and *CRB2* loci regulate *LAMA1* and *CRB2*, respectively, and establish *LAMA1* and *CRB2* as the predominant target gene of their corresponding PSSE within TAD boundaries. By analyzing *LAMA1* and *CRB2* expression throughout the pancreatic differentiation time course, we show that the identified PSSE control *LAMA1* and *CRB2* expression in a temporal manner consistent with the activation pattern of their associated PSSE. While the specific T2D-relevant target genes of the majority of T2D-associated PSSE remain to be identified, it is notable that several are localized within TADs containing genes encoding transcriptional regulators. These include *PROX1* and *GATA4*, which are known to regulate pancreatic development (Shi et al., 2017; Tiyaboonchai et al., 2017; Westmoreland et al., 2012), as well as *HMGA2* and *BCL6* with unknown functions in the pancreas. Our catalogue of T2D-associated PSSE provides a resource to fully characterize the gene regulatory program associated with developmentally mediated T2D risk in the pancreas. Our finding that predicted target genes of PSSE are similarly expressed in hESC-derived pancreatic progenitors and primary human embryonic pancreas (Figure 3B and Figure 3—figure supplement 1A) further underscores the utility of the hESC-based system for these studies.

In the embryo, endocrine cells differentiate by delaminating from a polarized epithelium of progenitors governed by local cell-cell and cell-matrix signaling events (Mamidi *et al.*, 2018). These processes are not well-recapitulated in the hESC-based pancreatic differentiation system, highlighting a limitation of this system for studying the function of Laminin and CRB2, which are mediators of mechanical signals within an epithelium. Therefore, we analyzed their function in zebrafish as an *in vivo* model. We show that *lama1* or *crb2* knockdown leads to an annular pancreas and reduced beta cell numbers. The beta cell differentiation defect was also evident in embryos not displaying an annular pancreas, suggesting independent mechanisms.

Consistent with our findings in *lama1* morphants, culture of pancreatic progenitors on Laminin-based substrates promotes endocrine cell differentiation (Mamidi *et al.*, 2018). During *in vivo* pancreatic development, endothelial cells are an important albeit not the only source of Laminin in the pancreas (Heymans *et al.*, 2019; Mamidi *et al.*, 2018; Nikolova *et al.*, 2006). While we do not know the respective contributions of endothelial cell- and pancreatic progenitor cell-derived Laminin to the phenotype of *lama1* morphants, the T2D-associated LAMA1 PSSE is not active in endothelial cells (Figure 3—figure supplement 1C). Furthermore, we found no other T2D-associated variants at the LAMA1 locus mapping in endothelial cell enhancers or accessible chromatin sites in islets, suggesting that T2D risk is linked to LAMA1 regulation in pancreatic progenitors.

Similar to Laminin, CRB2 has been shown to regulate mechanosignaling (Varelas *et al.*, 2010). Our observation that pancreatic progenitor cells express Crb proteins is consistent with the phenotype of *crb2* morphants reflecting a progenitor-autonomous role of Crb2. Furthermore, the similarity in pancreatic phenotype between *lama1* or *crb2* morphants raises the possibility that signals from Laminin and Crb2 could converge on the same intracellular pathways in pancreatic progenitors.

Our findings suggest that variation in gene regulation during pancreatic development can predispose to T2D later in life. Several lines of evidence support the concept of a developmental impact on T2D risk. First, human genetic studies have shown a strong correlation between birth weight and adult cardiometabolic traits and disease (Horikoshi *et al.*, 2016). Second, epidemiological studies provide evidence that offspring of mothers who were pregnant during a famine have a higher prevalence of T2D (Lumey *et al.*, 2015). This phenomenon has been experimentally reproduced in rodents, where maternal malnutrition has been shown to cause reduced beta cell mass at birth and to render beta cells more prone to failure under stress (Nielsen *et al.*, 2014). Together, our results provide a strong rationale for further exploration of how genetic variants affecting developmental gene regulation in the pancreas contribute to T2D risk.

## Materials and methods

### Key resources table

Reagent type (species) or resource	Designation	Source or reference	Identifiers	Additional information
Antibody	APC Mouse monoclonal IgG1, $\kappa$ Isotype Control	BD Pharmingen	Cat# 555751, RRID:AB_398613	Flow cytometry (1:100)
Antibody	Chicken polyclonal anti-GFP	Aves Labs	Cat# GFP-1020, RRID:AB_10000240	Immunohistochemistry (1:200)
Antibody	Cy3-conjugated donkey polyclonal anti-mouse	Jackson ImmunoResearch Labs	Cat# 715-165-150, RRID:AB_2340813	Immunofluorescence (1:1000)
Antibody	DyLight 488-conjugated donkey polyclonal anti-goat	Jackson ImmunoResearch Labs	Cat# 705-545-003, RRID:AB_2340428	Immunofluorescence (1:500)
Antibody	Goat polyclonal anti-CTCF	Santa Cruz Biotechnology	Cat# SC-15914X, RRID:AB_2086899	ChIP-seq (4 ug)
Antibody	Goat polyclonal anti-FOXA1	Abcam	Cat# ab5089, RRID:AB_304744	ChIP-seq (4 ug)
Antibody	Goat polyclonal anti-FOXA2	Santa Cruz Biotechnology	Cat# sc-6554, RRID:AB_2262810	ChIP-seq (4 ug)

Continued on next page

Continued

Reagent type (species) or resource	Designation	Source or reference	Identifiers	Additional information
Antibody	Goat polyclonal anti-GATA4	Santa Cruz Biotechnology	Cat# sc-1237, RRID:AB_2108747	ChIP-seq (4 ug)
Antibody	Goat polyclonal anti-PDX1	Abcam	Cat# ab47383, RRID:AB_2162359	Immunofluorescence (1:500)
Antibody	Guinea pig polyclonal anti-Insulin	Biomeda	Cat# v2024	Immunohistochemistry (1:200)
Antibody	Mouse monoclonal anti-Crb2a	ZIRC	Cat# Zs-4	Immunohistochemistry (1:100)
Antibody	Mouse polyclonal anti-GATA6	Santa Cruz Biotechnology	Cat# sc-9055, RRID:AB_2108768	ChIP-seq (4 ug)
Antibody	Mouse monoclonal anti-NKX6.1	Developmental Studies Hybridoma Bank	Cat# F64A6B4, RRID:AB_532380	Immunofluorescence (1:300)
Antibody	Mouse monoclonal anti-NKX6.1-Alexa Fluor 647	BD Biosciences	Cat# 563338, RRID:AB_2738144	Flow cytometry (1:5)
Antibody	Mouse monoclonal anti-NKX6.1	Developmental Studies Hybridoma Bank	Cat# F55A10, RRID:AB_532378	Immunohistochemistry (1:10)
Antibody	Mouse monoclonal anti-PDX1-PE	BD Biosciences	Cat# 562161, RRID:AB_10893589	Flow cytometry (1:10)
Antibody	PE Mouse monoclonal IgG1, $\kappa$ Isotype Control	BD Pharmingen	Cat# 555749, RRID:AB_396091	Flow cytometry (1:100)
Antibody	Rabbit polyclonal anti-CRB2	Sigma	Cat # SAB1301340	Immunofluorescence (1:500)
Antibody	Rabbit polyclonal anti-H3K27ac	Active Motif	Cat# 39133, RRID:AB_2561016	ChIP-seq (4 ug)
Antibody	Rabbit polyclonal anti-H3K4me1	Abcam	Cat# ab8895, RRID:AB_306847	ChIP-seq (4 ug)
Antibody	Rabbit polyclonal anti-HNF6	Santa Cruz Biotechnology	Cat# sc-13050, RRID:AB_2251852	ChIP-seq (4 ug)
Antibody	Rabbit polyclonal anti-laminin	Sigma	Cat# L9393, RRID:AB_477163	Immunohistochemistry (1:100) Immunofluorescence (1:30)
Antibody	Rabbit monoclonal anti-panCrb	Jensen Laboratory, University of Massachusetts, Amherst	N/A	Immunohistochemistry (1:100)
Antibody	Rabbit polyclonal anti-PDX1	Beta Cell Biology Consortium	AB1068	ChIP-seq (4 ug)
Antibody	Rabbit polyclonal anti-SOX9	Chemicon	Cat# 5535, RRID:AB_2239761	ChIP-seq (4 ug)
Cell line ( <i>Homo-sapiens</i> )	CyT49	ViaCyte, Inc	NIHhESC-10-0041, RRID:CVCL_B850	Male
Cell line ( <i>Homo-sapiens</i> )	H1	WiCell Research Institute	NIHhESC-10-0043, RRID:CVCL_9771	Male
Chemical compound, drug	2-Mercaptoethanol	Thermo Fisher Scientific	Cat# 21985023	
Chemical compound, drug	Accutase	Thermo Fisher Scientific	Cat# 00-4555-56	
Chemical compound, drug	B-27 supplement	Thermo Fisher Scientific	Cat# 17504044	

Continued on next page

Continued

Reagent type (species) or resource	Designation	Source or reference	Identifiers	Additional information
Chemical compound, drug	Bovine Albumin Fraction V	Life Technologies	Cat# 15260037	
Chemical compound, drug	D-(+)-Glucose Solution, 45%	Sigma-Aldrich	Cat# G8769	
Chemical compound, drug	DAPI	Invitrogen	Cat# D1306	Immunohistochemistry (1:200)
Chemical compound, drug	DMEM High Glucose	VWR	Cat# 16750-082	
Chemical compound, drug	DMEM/F12 [-] L-glutamine	VWR	Cat# 15-090-CV	
Chemical compound, drug	DMEM/F12 with L-Glutamine, HEPES	Corning	Cat# 45000-350	
Chemical compound, drug	DMF	EMD Millipore	Cat# DX1730	
Chemical compound, drug	DPBS	Thermo Fisher Scientific	Cat# 21-031-CV	
Chemical compound, drug	DTT	Sigma	Cat# D9779	
Chemical compound, drug	Fetal Bovine Serum	Thermo Fisher Scientific	Cat# MT35011CV	
Chemical compound, drug	Glutamax	Thermo Fisher Scientific	Cat# 35050-079	
Chemical compound, drug	GlutaMAX	Thermo Fisher Scientific	Cat# 35050061	
Chemical compound, drug	Hoechst 33342	Thermo Fisher Scientific	Cat# H3570	
Chemical compound, drug	HyClone Dulbecco's Modified Eagles Medium	Thermo Fisher Scientific	Cat# SH30081.FS	
Chemical compound, drug	IGEPAL-CA630	Sigma	Cat# I8896	
Chemical compound, drug	Illumina tagmentation enzyme	Illumina	Cat# FC-121-1030	
Chemical compound, drug	Insulin-Transferrin-Selenium (ITS)	Thermo Fisher Scientific	Cat# 41400045	
Chemical compound, drug	Insulin-Transferrin-Selenium-Ethanolamine (ITS-X)	Thermo Fisher Scientific	Cat# 51500-056	
Chemical compound, drug	KAAD-Cyclopamine	Toronto Research Chemicals	Cat# K171000	
Chemical compound, drug	K-acetate	Sigma	Cat# P5708	
Chemical compound, drug	KnockOut SR Xenofree	Thermo Fisher Scientific	Cat# A1099202	
Chemical compound, drug	LDN-193189	Stemgent	Cat# 04-0074	
Chemical compound, drug	Matrigel	Corning	Cat# 356231	
Chemical compound, drug	MCDB 131	Thermo Fisher Scientific	Cat# 10372-019	
Chemical compound, drug	Mg-acetate	Sigma	Cat# M2545	
Chemical compound, drug	mTeSR1 Complete Kit - GMP	STEMCELL Technologies	Cat# 85850	

Continued on next page

Continued

Reagent type (species) or resource	Designation	Source or reference	Identifiers	Additional information
Chemical compound, drug	NEBNext High-Fidelity 2X PCR Master Mix	NEB	Cat# M0541	
Chemical compound, drug	Non-Essential Amino Acids	Thermo Fisher Scientific	Cat# 11140050	
Chemical compound, drug	O.C.T. Compound	Sakura Finetek USA	Cat# 25608–930	
Chemical compound, drug	Penicillin-Streptomycin	Thermo Fisher Scientific	Cat# 15140122	
Chemical compound, drug	Polyethylenimine (PEI)	Polysciences	Cat# 23966–1	
Chemical compound, drug	Protease inhibitor	Roche	Cat# 05056489001	
Chemical compound, drug	Retinoic acid	Sigma-Aldrich	Cat# R2625	
Chemical compound, drug	RNA ScreenTape Sample Buffer	Agilent Technologies	Cat# 5067–5577	
Chemical compound, drug	ROCK Inhibitor Y-27632	STEMCELL Technologies	Cat# 72305	
Chemical compound, drug	RPMI 1640 [-] L-glutamine	VWR	Cat# 15–040-CV	
Chemical compound, drug	SANT-1	Sigma-Aldrich	Cat# S4572	
Chemical compound, drug	Sodium Bicarbonate	Sigma-Aldrich	Cat# NC0564699	
Chemical compound, drug	Tamoxifen	Sigma	Cat# T5648	
Chemical compound, drug	TGF- $\beta$ RI Kinase Inhibitor IV	Calbiochem	Cat# 616454	
Chemical compound, drug	TPB	Calbiochem	Cat# 565740	
Chemical compound, drug	Tranlycypromine	Cayman Chemical	Cat# 10010494	
Chemical compound, drug	Tris-acetate	Thermo Fisher Scientific	Cat# BP-152	
Chemical compound, drug	TTNPB	Enzo Life Sciences	Cat# BML-GR105	
Chemical compound, drug	Vectashield Antifade Mounting Medium	Vector Laboratories	Cat# H-1000	
Chemical compound, drug	XtremeGene 9	Roche	Cat# 6365787001	
Commercial assay	High Sensitivity D1000 ScreenTape	Agilent Technologies	Cat# 5067–5584	
Commercial assay, kit	RNA ScreenTape	Agilent Technologies	Cat# 5067–5576	
Commercial assay, kit	RNA Screen Tape Ladder	Agilent Technologies	Cat# 5067–5578	
Commercial assay, kit	BD Cytotfix/Cytoperm Plus Fixation/Permeabilization Solution Kit	BD Biosciences	Cat# 554715	
Commercial assay, kit	ChIP-IT High Sensitivity Kit	Active Motif	Cat# 53040	

Continued on next page



Continued

Reagent type (species) or resource	Designation	Source or reference	Identifiers	Additional information
Commercial assay, kit	iQ SYBR Green Supermix	Bio-Rad	Cat# 1708884	
Commercial assay, kit	iScript cDNA Synthesis Kit	Bio-Rad	Cat# 1708891	
Commercial assay, kit	KAPA Library Preparation Kit (Illumina)	Kapa Biosystems	Cat# KK8234	
Commercial assay, kit	KAPA Stranded mRNA-Seq Kits	Kapa Biosystems	Cat# KK8401	
Commercial assay, kit	MinElute PCR purification kit	QIAGEN	Cat# 28004	
Commercial assay, kit	Qubit ssDNA assay kit	Thermo Fisher Scientific	Cat# Q10212	
Commercial assay, kit	RNeasy Micro Kit	QIAGEN	Cat# 74004	
Genetic reagent ( <i>D. rerio</i> )	<i>Tg(ptf1a:eGFP)<sup>yh1</sup></i>	PMID:16258076	N/A	
Other	SPRIselect bead	Beckman Coulter	Cat# B23317	
Recombinant protein	Activin A	R and D Systems	Cat# 338-AC/CF	
Recombinant protein	Human AB Serum	Valley Biomedical	Cat# HP1022	
Recombinant protein	Recombinant EGF	R and D Systems	Cat# 236-EG	
Recombinant protein	Recombinant Heregulin $\beta$ -1	Peptotech	Cat# 100-03	
Recombinant protein	Recombinant KGF/FGF7	R and D Systems	Cat# 251 KG	
Recombinant protein	Recombinant Mouse Wnt3A	R and D Systems	Cat# 1324-WN/CF	
Recombinant protein	Recombinant Noggin	R and D Systems	Cat# 3344 NG	
Sequence-based reagent	Px333 Plasmid	<a href="http://www.addgene.org/64073/">http://www.addgene.org/64073/</a>	RRID:Addgene_64073	
Sequence-based reagent	LAMA1 Forward	This paper	qPCR primers	GTG ATG GCA ACA GCG CAA A
Sequence-based reagent	LAMA1 Reverse	This paper	qPCR primers	GAC CCA GTG ATA TTC TCT CCC A
Sequence-based reagent	CRB2 Forward	This paper	qPCR primers	ACC ACT GTG CTT GTC CTG AG
Sequence-based reagent	CRB2 Reverse	This paper	qPCR primers	TCC AGG GTC GCT AGA TGG AG
Sequence-based reagent	TBP Forward	This paper	qPCR primers	TGT GCA CAG GAG CCA AGA GT
Sequence-based reagent	TBP Reverse	This paper	qPCR primers	ATT TTC TTG CTG CCA GTC TGG
Sequence-based reagent	LAMA1Enh Upstream Guide	This paper	CRISPR sgRNA	GTC AAA TTG CTA TAA CAC GG
Sequence-based reagent	LAMA1Enh Downstream Guide	This paper	CRISPR sgRNA	CCA CTT TAA GTA TCT CAG CA
Sequence-based reagent	CRB2Enh Upstream Guide	This paper	CRISPR sgRNA	ATA CAA AGC ACG TGA GA

Continued on next page

Continued

Reagent type (species) or resource	Designation	Source or reference	Identifiers	Additional information
Sequence-based reagent	CRB2Enh Downstream Guide	This paper	CRISPR sgRNA	GAA TGC GGA TGA CGC CTG AG
Sequence-based reagent	lama1-ATG	PMID:16321372	Morpholino	TCA TCC TCA TCT CCA TCA TCG CTC A Obtained from GeneTools, LLC
Sequence-based reagent	crb2a-SP	PMID:16713951	Morpholino	ACG TTG CCA GTA CCT GTG TAT CCT G Obtained from GeneTools, LLC
Sequence-based reagent	crb2b-SP	PMID:16713951	Morpholino	TAA AGA TGT CCT ACC CAG CTT GAA C Obtained from GeneTools, LLC
Sequence-based reagent	standard control MO	N/A	Morpholino	CCT CTT ACC TCA GTT ACA ATT TAT A Obtained from GeneTools, LLC
Software, algorithm	Adobe Illustrator v 5.1	<a href="http://www.adobe.com/products/illustrator.html">http://www.adobe.com/products/illustrator.html</a>	RRID:SCR_014198	
Software, algorithm	Adobe Photoshop v 5.1	<a href="http://www.adobe.com/products/photoshop.html">http://www.adobe.com/products/photoshop.html</a>	RRID:SCR_014199	
Software, algorithm	BEDtools v 2.26.0	<a href="https://github.com/arq5x/bedtools2">https://github.com/arq5x/bedtools2</a>	RRID:SCR_006646	
Software, algorithm	Bioconductor	<a href="https://www.bioconductor.org/">https://www.bioconductor.org/</a>	RRID: SCR_006442	
Software, algorithm	Burrows-Wheeler Aligner v 0.7.13	<a href="http://bio-bwa.sourceforge.net/">http://bio-bwa.sourceforge.net/</a>	RRID:SCR_010910	
Software, algorithm	CENTIPEDE v 1.2	<a href="http://centipede.uchicago.edu/">http://centipede.uchicago.edu/</a>	N/A	
Software, algorithm	Cufflinks v 2.2.1	<a href="http://cole-trapnell-lab.github.io/cufflinks/">http://cole-trapnell-lab.github.io/cufflinks/</a>	RRID:SCR_014597	
Software, algorithm	deepTools2 v 3.1.3	<a href="https://deeptools.readthedocs.io/en/develop/content/installation.html">https://deeptools.readthedocs.io/en/develop/content/installation.html</a>	N/A	
Software, algorithm	DESeq2 v 3.10	<a href="https://bioconductor.org/packages/release/bioc/html/DESeq2.html">https://bioconductor.org/packages/release/bioc/html/DESeq2.html</a>	RRID:SCR_015687	
Software, algorithm	FlowJo v10 software	<a href="https://www.flowjo.com/solutions/flowjo">https://www.flowjo.com/solutions/flowjo</a>	RRID: SCR_008520	
Software, algorithm	GraphPad Prism v 8.1.2	<a href="https://www.graphpad.com/scientific-software/prism/">https://www.graphpad.com/scientific-software/prism/</a>	RRID: SCR_002798	
Software, algorithm	HOMER v 4.10.4	<a href="http://homer.ucsd.edu/homer/">http://homer.ucsd.edu/homer/</a>	RRID: SCR_010881	
Software, algorithm	Juicebox Tools v 1.4	<a href="https://github.com/aidenlab/Juicebox/wiki/Juicebox-Assembly-Tools">https://github.com/aidenlab/Juicebox/wiki/Juicebox-Assembly-Tools</a>	N/A	
Software, algorithm	MACS2 v 2.1.4	<a href="http://liulab.dfci.harvard.edu/MACS/">http://liulab.dfci.harvard.edu/MACS/</a>	RRID:SCR_013291	
Software, algorithm	MEME suite v 5.1.1	<a href="http://meme-suite.org/">http://meme-suite.org/</a>	RRID:SCR_001783	
Software, algorithm	Metascape	<a href="http://metscape.ncibi.org">http://metscape.ncibi.org</a>	RRID:SCR_014687	
Software, algorithm	Picard Tools v 1.131	<a href="http://broadinstitute.github.io/picard/">http://broadinstitute.github.io/picard/</a>	RRID:SCR_006525	
Software, algorithm	R Project for Statistical Computing v 3.6.1	<a href="http://www.r-project.org/">http://www.r-project.org/</a>	RRID:SCR_001905	
Software, algorithm	SAMtools v 1.5	<a href="http://samtools.sourceforge.net">http://samtools.sourceforge.net</a>	RRID:SCR_002105	
Software, algorithm	STAR v 2.4	<a href="https://github.com/alexdobin/STAR">https://github.com/alexdobin/STAR</a>	N/A	
Software, algorithm	UCSC Genome Browser	<a href="http://genome.ucsc.edu/">http://genome.ucsc.edu/</a>	RRID:SCR_005780	
Software, algorithm	vcf2diploid v 0.2.6a	<a href="https://github.com/abyzovlab/vcf2diploid">https://github.com/abyzovlab/vcf2diploid</a>	N/A	
Software, algorithm	ZEISS ZEN Digital Imaging for Light Microscopy	<a href="http://www.zeiss.com/microscopy/en_us/products/microscope-software/zen.html#introduction">http://www.zeiss.com/microscopy/en_us/products/microscope-software/zen.html#introduction</a>	RRID:SCR_013672	

## Maintenance and differentiation of CyT49 hESCs

Genomic and gene expression analyses (ChIP-seq, ATAC-seq, RNA-seq) for generation of chromatin maps and target gene identification were performed in CyT49 hESCs (male). Propagation of CyT49 hESCs was carried out by passing cells every 3 to 4 days using Accutase (eBioscience) for enzymatic cell dissociation, and with 10% (v/v) human AB serum (Valley Biomedical) included in the hESC media the day of passage. hESCs were seeded into tissue culture flasks at a density of 50,000 cells/cm<sup>2</sup>. hESC research was approved by the University of California, San Diego, Institutional Review Board and Embryonic Stem Cell Research oversight committee.

Pancreatic differentiation was performed as previously described (Schulz *et al.*, 2012; Wang *et al.*, 2015; Xie *et al.*, 2013). Briefly, a suspension-based culture format was used to differentiate cells in aggregate form. Undifferentiated aggregates of hESCs were formed by re-suspending dissociated cells in hESC maintenance medium at a concentration of  $1 \times 10^6$  cells/mL and plating 5.5 mL per well of the cell suspension in 6-well ultra-low attachment plates (Costar). The cells were cultured overnight on an orbital rotator (Innova2000, New Brunswick Scientific) at 95 rpm. After 24 hr the undifferentiated aggregates were washed once with RPMI medium and supplied with 5.5 mL of day 0 differentiation medium. Thereafter, cells were supplied with the fresh medium for the appropriate day of differentiation (see below). Cells were continually rotated at 95 rpm, or 105 rpm on days 4 through 8, and no media change was performed on day 10. Both RPMI (Mediatech) and DMEM High Glucose (HyClone) medium were supplemented with 1X GlutaMAX and 1% penicillin/streptomycin. Human activin A, mouse Wnt3a, human KGF, human noggin, and human EGF were purchased from R and D systems. Other added components included FBS (HyClone), B-27 supplement (Life Technologies), Insulin-Transferrin-Selenium (ITS; Life Technologies), TGF $\beta$  R1 kinase inhibitor IV (EMD Bioscience), KAAD-Cyclopamine (KC; Toronto Research Chemicals), and the retinoic receptor agonist TTNPB (RA; Sigma Aldrich). Day-specific differentiation media formulations were as follows:

Days 0 and 1: RPMI + 0.2% (v/v) FBS, 100 ng/mL Activin, 50 ng/mL mouse Wnt3a, 1:5000 ITS.  
Days 1 and 2: RPMI + 0.2% (v/v) FBS, 100 ng/mL Activin, 1:5000 ITS  
Days 2 and 3: RPMI + 0.2% (v/v) FBS, 2.5 mM TGF $\beta$  R1 kinase inhibitor IV, 25 ng/mL KGF, 1:1000 ITS  
Days 3–5: RPMI + 0.2% (v/v) FBS, 25 ng/mL KGF, 1:1000 ITS  
Days 5–8: DMEM + 0.5X B-27 Supplement, 3 nM TTNPB, 0.25 mM KAAD-Cyclopamine, 50 ng/mL Noggin  
Days 8–10: DMEM/B-27, 50 ng/mL KGF, 50 ng/mL EGF

Cells at D0 correspond to the embryonic stem cell (ES) stage, cells at D2 correspond to the definitive endoderm (DE) stage, cells at D5 correspond to the gut tube (GT) stage, cells at D7 correspond to the early pancreatic progenitor (PP1) stage, and cells at D10 correspond to the late pancreatic progenitor (PP2) stage.

## Maintenance and differentiation of H1 hESCs

$\Delta$ LAMA1*Enh* and  $\Delta$ CRB2*Enh* clonal lines were derived by targeting H1 hESCs (male). Cells were maintained and differentiated as described with some modifications (Jin *et al.*, 2019; Rezanian *et al.*, 2014). In brief, hESCs were cultured in mTeSR1 media (Stem Cell Technologies) and propagated by passaging cells every 3–4 days using Accutase (eBioscience) for enzymatic cell dissociation. hESC research was approved by the University of California, San Diego, Institutional Review Board and Embryonic Stem Cell Research Oversight Committee.

For differentiation, cells were dissociated using Accutase for 10 min, then reaggregated by plating the cells at a concentration of  $\sim 5.5 \times 10^6$  cells/well in a low attachment six-well plate on an orbital shaker (100 rpm) in a 37°C incubator. The following day, undifferentiated cells were washed in base media (see below) and then differentiated using a multi-step protocol with stage-specific media and daily media changes.

All stage-specific base media were comprised of MCDB 131 medium (Thermo Fisher Scientific) supplemented with NaHCO<sub>3</sub>, GlutaMAX, D-Glucose, and BSA using the following concentrations:

Stage 1/2 medium: MCDB 131 medium, 1.5 g/L NaHCO<sub>3</sub>, 1X GlutaMAX, 10 mM D-Glucose, 0.5% BSA

Stage 3/4 medium: MCDB 131 medium, 2.5 g/L NaHCO<sub>3</sub>, 1X GlutaMAX, 10 mM D-glucose, 2% BSA

Media compositions for each stage were as follows:

Stage 1 (day 0–2): base medium, 100 ng/ml Activin A, 25 ng/ml Wnt3a (day 0). Day 1–2: base medium, 100 ng/ml Activin A

Stage 2 (day 3–5): base medium, 0.25 mM L-Ascorbic Acid (Vitamin C), 50 ng/mL FGF7

Stage 3 (day 6–7): base medium, 0.25 mM L-Ascorbic Acid, 50 ng/mL FGF7, 0.25 μM SANT-1, 1 μM Retinoic Acid, 100 nM LDN193189, 1:200 ITS-X, 200 nM TPB

Stage 4 (day 8–10): base medium, 0.25 mM L-Ascorbic Acid, 2 ng/mL FGF7, 0.25 μM SANT-1, 0.1 μM Retinoic Acid, 200 nM LDN193189, 1:200 ITS-X, 100 nM TPB

Cells at D0 correspond to the embryonic stem cell (ES) stage, cells at D3 correspond to the definitive endoderm (DE) stage, cells at D6 correspond to the gut tube (GT) stage, cells at D8 correspond to the early pancreatic progenitor (PP1) stage, and cells at D11 correspond to the late pancreatic progenitor (PP2) stage.

### Generation of $\Delta$ LAMA1Enh, $\Delta$ CRB2Enh, $\Delta$ LAMA1, and $\Delta$ CRB2 hESC lines

To generate clonal homozygous *LAMA1*Enh and *CRB2*Enh deletion hESC lines, sgRNAs targeting each relevant enhancer were designed and cloned into Px333-GFP, a modified version of Px333 (Addgene, #64073). To generate clonal homozygous *LAMA1* and *CRB2* deletion hESC lines, sgRNAs targeting the second exon of each gene were designed and cloned into Px458 (Addgene, #48138). Plasmids expressing the sgRNAs were transfected into H1 hESCs with XtremeGene 9 (Roche). Twenty-four hr later, 8000 GFP<sup>+</sup> cells were sorted into a well of six-well plate. Individual colonies that emerged within 5–7 days after transfection were subsequently transferred manually into 48-well plates for expansion, genomic DNA extraction, PCR genotyping, and Sanger sequencing. sgRNA oligos are listed below.

*LAMA1*Enh Upstream Guide: GTCAAATTGCTATAACACGG

*LAMA1*Enh Downstream Guide: CCACTTTAAGTATCTCAGCA

*CRB2*Enh Upstream Guide: ATACAAAGCACGTGAGA

*CRB2*Enh Downstream Guide: GAATGCGGATGACGCCTGAG

*LAMA1* Exon 2 Guide: ATCAGCACCAATGCCACCTG

*CRB2* Exon 2 Guide: TCGATGTCCAGCTCGCAGCG

### Human tissue

Human embryonic pancreas tissue was obtained from the Birth Defects Research Laboratory of the University of Washington. Studies for use of embryonic human tissue were approved by the Institutional Review Board of the University of California, San Diego. A pancreas from a 54- and 58-day gestation embryo each were pooled for RNA-seq analysis.

### Zebrafish husbandry

Adult zebrafish and embryos were cared for and maintained under standard conditions. All research activity involving zebrafish was reviewed and approved by SBP Medical Discovery Institute Institutional Animal Care and Use Committee. The following transgenic lines were used: *Tg(ptf1a:eGFP)<sup>jh1</sup>* (Godinho et al., 2005).

### Morpholino injections in zebrafish

The following previously validated morpholinos were injected into the yolk at the one-cell stage in a final volume of either 0.5 or 1 nl: 0.75 ng lama1-ATG (5'-TCATCCTCATCTCCATCATCGCTCA-3'); 3 ng crb2a-SP, (5'-ACGTTGCCAGTACCTGTGTATCCTG-3') (Omori and Malicki, 2006; Watanabe et al., 2010); 3 ng crb2b-SP, (5'-TAAAGATGTCTACCCAGCTTGAAC-3') (Omori and Malicki, 2006); 6.75 ng standard control MO (5'-CCTCTTACCTCAGTTACAATTTATA-3'). All morpholinos were obtained from GeneTools, LLC.

## Chromatin immunoprecipitation sequencing (ChIP-seq)

ChIP-seq was performed using the ChIP-IT High-Sensitivity kit (Active Motif) according to the manufacturer's instructions. Briefly, for each cell stage and condition analyzed,  $5\text{--}10 \times 10^6$  cells were harvested and fixed for 15 min in an 11.1% formaldehyde solution. Cells were lysed and homogenized using a Dounce homogenizer and the lysate was sonicated in a Bioruptor Plus (Diagenode), on high for  $3 \times 5$  min (30 s on, 30 s off). Between 10 and 30  $\mu\text{g}$  of the resulting sheared chromatin was used for each immunoprecipitation. Equal quantities of sheared chromatin from each sample were used for immunoprecipitations carried out at the same time. A total of 4  $\mu\text{g}$  of antibody were used for each ChIP-seq assay. Chromatin was incubated with primary antibodies overnight at 4°C on a rotator followed by incubation with Protein G agarose beads for 3 hr at 4°C on a rotator. Antibodies used were rabbit anti-H3K27ac (Active Motif 39133), rabbit anti-H3K4me1 (Abcam ab8895), rabbit anti-H3K4me3 (Millipore 04-745), rabbit anti-H3K27me3 (Millipore 07-499), goat anti-CTCF (Santa Cruz Biotechnology SC-15914X), goat anti-GATA4 (Santa Cruz SC-1237), rabbit anti-GATA6 (Santa Cruz SC-9055), goat anti-FOXA1 (Abcam Ab5089), goat-anti-FOXA2 (Santa Cruz SC-6554), rabbit anti-PDX1 (BCBC AB1068), rabbit anti-HNF6 (Santa Cruz SC-13050), and rabbit anti-SOX9 (Chemicon AB5535). Reversal of crosslinks and DNA purification were performed according to the ChIP-IT High-Sensitivity instructions, with the modification of incubation at 65°C for 2–3 hr, rather than at 80°C for 2 hr. Sequencing libraries were constructed using KAPA DNA Library Preparation Kits for Illumina (Kapa Biosystems) and library sequencing was performed on either a HiSeq 4000 System (Illumina) or NovaSeq 6000 System (Illumina) with single-end reads of either 50 or 75 base pairs (bp). Sequencing was performed by the Institute for Genomic Medicine (IGM) core research facility at the University of California at San Diego (UCSD). Two replicates from independent hESC differentiations were generated for each ChIP-seq experiment.

### ChIP-seq data analysis

ChIP-seq reads were mapped to the human genome consensus build (hg19/GRCh37) and visualized using the UCSC Genome Browser (*Kent et al., 2002*). Burrows-Wheeler Aligner (BWA) (*Li and Durbin, 2009*) version 0.7.13 was used to map data to the genome. Unmapped and low-quality ( $q < 15$ ) reads were discarded. SAMtools (*Li et al., 2009*) was used to remove duplicate sequences and HOMER (*Heinz et al., 2010*) was used to call peaks using default parameters and to generate tag density plots. Stage- and condition-matched input DNA controls were used as background when calling peaks. The BEDtools suite of programs (*Quinlan and Hall, 2010*) was used to perform genomic algebra operations. For all ChIP-seq experiments, replicates from two independent hESC differentiations were generated. Tag directories were created for each replicate using HOMER. Directories from each replicate were then combined, and peaks were called from the combined replicates. For histone modifications and CTCF peaks, Pearson correlations between each pair of replicates were calculated over the called peaks using the command multiBamSummary from the deepTools2 package (*Ramírez et al., 2016*). For pancreatic lineage-determining transcription factors (GATA4, GATA6, FOXA1, FOXA2, HNF6, PDX1, SOX9), correlations were calculated for peaks overlapping PSSE. Calculated Pearson correlations are as follow:

	H3K4me1	H3K27ac	CTCF	H3K4me3	H3K27me3
ES	0.90	0.91	0.87	0.81	1.00
DE	0.97	0.84	0.86	0.99	0.99
GT	0.97	0.87	0.89	0.97	0.99
PP1	0.97	0.85	0.89	0.96	0.99
PP2	0.98	0.87	0.87	0.97	1.00

	GATA4	GATA6	FOXA1	FOXA2	HNF6	PDX1	SOX9
PP2	0.86	0.82	0.87	0.80	0.95	0.64	0.86

## RNA isolation and sequencing (RNA-seq) and qRT-PCR

RNA was isolated from cell samples using the RNeasy Micro Kit (Qiagen) according to the manufacturer instructions. For each cell stage and condition analyzed between  $0.1$  and  $1 \times 10^6$  cells were collected for RNA extraction. For qRT-PCR, cDNA synthesis was first performed using the iScript cDNA Synthesis Kit (Bio-Rad) and 500 ng of isolated RNA per reaction. qRT-PCR reactions were performed in triplicate with 10 ng of template cDNA per reaction using a CFX96 Real-Time PCR Detection System and the iQ SYBR Green Supermix (Bio-Rad). PCR of the TATA binding protein (TBP) coding sequence was used as an internal control and relative expression was quantified via double delta CT analysis. For RNA-seq, stranded, single-end sequencing libraries were constructed from isolated RNA using the TruSeq Stranded mRNA Library Prep Kit (Illumina) and library sequencing was performed on either a HiSeq 4000 System (Illumina) or NovaSeq 6000 System (Illumina) with single-end reads of either 50 or 75 base pairs (bp). Sequencing was performed by the Institute for Genomic Medicine (IGM) core research facility at the University of California at San Diego. A complete list of RT-qPCR primer sequences can be found below.

<b>LAMA1 forward</b>	<b>GTG ATG GCA ACA GCG CAA A</b>
LAMA1 reverse	GAC CCA GTG ATA TTC TCT CCC A
CRB2 forward	ACC ACT GTG CTT GTC CTG AG
CRB2 reverse	TCC AGG GTC GCT AGA TGG AG
PDX1 forward	AAG TCT ACC AAA GCT CAC GCG
PDX1 reverse	GTA GGC GCC GCC TGC
NKX6.1 forward	CTG GCC TGT ACC CCT CAT CA
NKX6.1 reverse	CTT CCC GTC TTT GTC CAA CA
PROX1 forward	AAC ATG CAC TAC AAT AAA GCA AAT GAC
PROX1 reverse	CAG GAA TCT CTC TGG AAC CTC AAA
PTF1A forward	GAA GGT CAT CAT CTG CCA TC
PTF1A reverse	GGC CAT AAT CAG GGT CGC T
SOX9 forward	AGT ACC CGC ACT TGC ACA AC
SOX9 reverse	ACT TGT AAT CCG GGT GGT CCT T
TBP forward	TGT GCA CAG GAG CCA AGA GT
TBP reverse	ATT TTC TTG CTG CCA GTC TGG

## RNA-seq data analysis

Reads were mapped to the human genome consensus build (hg19/GRCh37) using the Spliced Transcripts Alignment to a Reference (STAR) aligner v2.4 (Dobin et al., 2013). Normalized gene expression (fragments per kilobase per million mapped reads; FPKM) for each sequence file was determined using Cufflinks v2.2.1 (Trapnell et al., 2010) with the parameters: `-library-type fr-firststrand -max-bundle-frags 10000000`. For all RNA-Seq experiments, replicates from two independent hESC differentiations were generated. Pearson correlations between bam files corresponding to each pair of replicates were calculated, and are as follow:

<b><math>\Delta</math>LAMA1Enh clone 1 PP2</b>	<b>1.00</b>
$\Delta$ LAMA1Enh clone 2 PP2	0.99
$\Delta$ CRB2Enh clone 1 PP2	0.98
$\Delta$ CRB2Enh clone 2 PP2	0.90
$\Delta$ LAMA1Enh control PP2	0.92
$\Delta$ CRB2Enh control PP2	0.99



## Assay for transposase accessible chromatin sequencing (ATAC-seq)

ATAC-seq (*Buenrostro et al., 2013*) was performed on approximately 50,000 nuclei. The samples were permeabilized in cold permeabilization buffer 0.2% IGEPAL-CA630 (I8896, Sigma), 1 mM DTT (D9779, Sigma), Protease inhibitor (05056489001, Roche), 5% BSA (A7906, Sigma) in PBS (10010–23, Thermo Fisher Scientific) for 10 min on the rotator in the cold room and centrifuged for 5 min at 500 × g at 4°C. The pellet was resuspended in cold tagmentation buffer (33 mM Tris-acetate (pH = 7.8) (BP-152, Thermo Fisher Scientific), 66 mM K-acetate (P5708, Sigma), 11 mM Mg-acetate (M2545, Sigma), 16% DMF (DX1730, EMD Millipore) in Molecular biology water (46000 CM, Corning)) and incubated with tagmentation enzyme (FC-121–1030; Illumina) at 37°C for 30 min with shaking at 500 rpm. The tagmented DNA was purified using MinElute PCR purification kit (28004, QIAGEN). Libraries were amplified using NEBNext High-Fidelity 2X PCR Master Mix (M0541, NEB) with primer extension at 72°C for 5 min, denaturation at 98°C for 30 s, followed by 8 cycles of denaturation at 98°C for 10 s, annealing at 63°C for 30 s and extension at 72°C for 60 s. After the purification of amplified libraries using MinElute PCR purification kit (28004, QIAGEN), double size selection was performed using SPRIselect bead (B23317, Beckman Coulter) with 0.55X beads and 1.5X to sample volume. Finally, libraries were sequenced on HiSeq4000 (Paired-end 50 cycles, Illumina).

## ATAC-seq data analysis

ATAC-seq reads were mapped to the human genome (hg19/GRCh37) using Burrows-Wheeler Aligner (BWA) version 0.7.13 (*Li and Durbin, 2009*), and visualized using the UCSC Genome Browser (*Kent et al., 2002*). SAMtools (*Li et al., 2009*) was used to remove unmapped, low-quality ( $q < 15$ ), and duplicate reads. MACS2 (*Zhang et al., 2008*) was used to call peaks, with parameters ‘shift set to 100 bps, smoothing window of 200 bps’ and with ‘nolambda’ and ‘nomodel’ flags on. MACS2 was also used to call ATAC-Seq summits, using the same parameters combined with the ‘call-summits’ flag.

For all ATAC-Seq experiments, replicates from two independent hESC differentiations were generated. Bam files for each pair of replicates were merged for downstream analysis using SAMtools, and Pearson correlations between bam files for each individual replicate were calculated over a set of peaks called from the merged bam file. Correlations were performed using the command multi-BamSummary from the deepTools2 package (*Ramírez et al., 2016*) with the ‘—removeOutliers’ flag and are as follow:

ES	0.95
DE	0.83
GT	1.00
PP1	1.00
PP2	1.00

For downstream analysis, ATAC-seq peaks were merged from two independent differentiations for ES, DE, GT, PP1, and PP2 stage cells and from four donors for primary islets. Primary islet ATAC-seq data was obtained from previously published datasets (*Greenwald et al., 2019*).

## Hi-C data analysis

Hi-C data were processed as previously described with some modifications (*Dixon et al., 2015*). Read pairs were aligned to the hg19 reference genome separately using BWA-MEM with default parameters (*Li and Durbin, 2009*). Specifically, chimeric reads were processed to keep only the 5’ position and reads with low mapping quality (<10) were filtered out. Read pairs were then paired using custom scripts. Picard tools were then used to remove PCR duplicates. Bam files with alignments were further processed into text format as required by Juicebox tools (*Durand et al., 2016*). Juicebox tools were then applied to generate hic files containing normalized contact matrices. All downstream analysis was based on 10 Kb resolution KR normalized matrices.

Chromatin loops were identified by comparing each pixel with its local background, as described previously (*Rao et al., 2014*) with some modifications. Specifically, only the donut region around the pixel was compared to model the expected count. Briefly, the KR-normalized contact matrices at 10

Kb resolution were used as input for loop calling. For each pixel, distance-corrected contact frequencies were calculated for each surrounding bin and the average of all surrounding bins. The expected counts were then transformed to raw counts by multiplying the counts with the raw-to-KR normalization factor. The probability of observing raw expected counts was calculated using Poisson distribution. All pixels with  $p$ -value $<0.01$  and distance less than 10 Kb were selected as candidate pixels. Candidate pixels were then filtered to remove pixels without any neighboring candidate pixels since they were likely false positives. Finally, pixels within 20 Kb of each other were collapsed and only the most significant pixel was selected. The collapsed pixels with  $p$ -value $<1e-5$  were used as the final list of chromatin loops.

A full set of scripts used for processing Hi-C data (Qiu, 2021) is available at <https://github.com/MSanderlab/Pancreatic-progenitor-epigenome-maps-prioritize-type-2-diabetes-risk-genes-with-roles-in-development/tree/master> (copy archived at [swh:1:rev:ba79c687523c2696ea0ef30d8476e28a0d860f18](https://www.archive.org/details/swh:1:rev:ba79c687523c2696ea0ef30d8476e28a0d860f18)).

## Definition of chromatin states

We collected or generated H3K4me1, H3K27ac, H3K4me1, H3K4me3, H3K27me3, and CTCF ChIP-seq data at each developmental stage and in mature islets. Data corresponding to mature islets was downloaded from previously published studies (Bhandare et al., 2010; Parker et al., 2013; Pasquali et al., 2014). Sequence reads were mapped to the human genome hg19 using bwa (version 0.7.12) (Li and Durbin, 2009), and low quality and duplicate reads were filtered using samtools (version 1.3) (Li et al., 2009). Using these reads, we then called chromatin states jointly across all data using chromHMM (version 1.12) (Ernst and Kellis, 2012) and used a 10-state model and 200 bp bin size, as models with larger state numbers did not empirically resolve any additional informative states. We then assigned state names based on patterns defined by the NIH Epigenome Roadmap (Kundaje et al., 2015), which included active promoter/TssA (high H3K4me3, high H3K27ac), flanking TSS/TssFlnk1 (high H3K4me3), flanking TSS/TssFlnk 2 (high H3K4me3, high H3K27ac, high H3K4me1), bivalent Tss/TssBiv (high H3K27me3, high H3K4me3), poised enhancer/EnhP (high H3K4me1), insulator/CTCF (high CTCF), active enhancer/EnhA (high H3K27ac, high H3K4me1), repressor (high H3K27me3), and two quiescent (low signal for all assays) states. The state map with assigned names is shown in **Figure 1—figure supplement 1A**.

We next defined stretch enhancer elements at each developmental stage and in mature islets. For each active enhancer (EnhA) element, we determined the number of consecutive 200 bp bins covered by the enhancer. We then modeled the resulting bin counts for enhancers in each cell type using a Poisson distribution. Enhancers with a  $p$ -value less than .001 were labeled as stretch enhancers and otherwise labeled as traditional enhancers.

## Permutation-based significance

A random sampling approach (10,000 iterations) was used to obtain null distributions for enrichment analyses, in order to obtain  $p$ -values. Null distributions for enrichments were obtained by randomly shuffling enhancer regions using BEDTools (Quinlan and Hall, 2010) and overlapping with ATAC-seq peaks.  $p$ -values $<0.05$  were considered significant.

## Assignment of enhancer target genes

Transcriptomes were filtered for genes expressed (FPKM  $\geq 1$ ) at each relevant stage, and BEDTools (Quinlan and Hall, 2010) was used to assign each enhancer to the nearest annotated TSS.

## Gene ontology

All gene ontology analyses were performed using Metascape (Zhou et al., 2019) with default parameters.

## Motif enrichment analysis

The findMotifsGenome.pl. command in HOMER (Heinz et al., 2010) was used to identify enriched transcription factor binding motifs. de novo motifs were assigned to transcription factors based on suggestions generated by HOMER.

## T2D-relevant trait enrichment analysis

GWAS summary statistics for T2D (Mahajan et al., 2018; Perry et al., 2012), metabolic traits (HOMA-B, HOMA-IR [Dupuis et al., 2010], fasting glucose, fasting insulin [Manning et al., 2012], fasting proinsulin [Strawbridge et al., 2011], 2 hr glucose adjusted for BMI [Saxena et al., 2010], HbA1c, insulin secretion rate, disposition index, acute insulin response, peak insulin response [Wood et al., 2017]), and developmental traits (head circumference [Taal et al., 2012], birth length [van der Valk et al., 2015], birth weight [Horikoshi et al., 2016]) conducted with individuals of European ancestry were obtained from various sources including the MAGIC consortium, EGG consortium, and authors of the studies. Custom LD score annotation files were created for PSSE, PP2 stretch enhancers, and islet stretch enhancers using LD score regression version 1.0.1 (Bulik-Sullivan et al., 2015). Enrichments for GWAS trait-associated variants within PSSE, PP2 stretch enhancers, and islet stretch enhancers were estimated with stratified LD score regression (Finucane et al., 2015). We next determined enrichment in the proportion of variants in accessible chromatin sites within islet SE and PSSE with nominal association to beta cell-related glycemetic traits. For each trait, we calculated a  $2 \times 2$  table of variants mapping in and outside of islet SE or PSSE and with or without nominal association and then determined significance using a chi-square test.

## Adipocyte differentiation analysis

Chromatin states for human adipose stromal cell (hASC) differentiation stages (1-4) were obtained from a published study (Varshney et al., 2017). PSSE were intersected with hASC chromatin states using BEDTools intersect (version 2.26.0) (Quinlan and Hall, 2010) with default parameters.

## Identification of T2D risk loci intersecting PSSE

T2D GWAS summary statistics were obtained from the DIAMANTE consortium (Mahajan et al., 2018). Intersection of variants and PSSE was performed using BEDTools intersect (version 2.26.0) (Quinlan and Hall, 2010) with default parameters. The adjusted significance threshold was set at  $p < 4.66 \times 10^{-6}$  (Bonferroni correction for 10,738 variants mapping in PSSE). Putative novel loci were defined as those with (1) at least one variant in a PSSE reaching the adjusted significance threshold and (2) mapping at least 500 kb away from a known T2D locus.

## ATAC-seq footprinting analysis

ATAC-seq footprinting was performed as previously described (Aylward et al., 2018). In brief, diploid genomes for CyT49 were created using vcf2diploid (version 0.2.6a) (Rozowsky et al., 2011) and genotypes called from whole genome sequencing and scanned for a compiled database of TF sequence motifs from JASPAR (Mathelier et al., 2016) and ENCODE (ENCODE Project Consortium, 2012) with FIMO (version 4.12.0) (Grant et al., 2011) using default parameters for p-value threshold and a 40.9% GC content based on the hg19 human reference genome. Footprints within ATAC-seq peaks were discovered with CENTIPEDE (version 1.2) (Pique-Regi et al., 2011) using cut-site matrices containing Tn5 integration counts within a  $\pm 100$  bp window around each motif occurrence. Footprints were defined as those with a posterior probability  $\geq 0.99$ .

## Generation of similarity matrices for total transcriptomes

For each replicate, FPKM values corresponding to total transcriptome were filtered for genes expressed (FPKM  $\geq 1$ ) in  $\geq 1$  replicate. For expressed genes,  $\log(\text{FPKM}+1)$  values were used to calculate Pearson correlations.

## Immunofluorescence analysis

Cell aggregates derived from hESCs were allowed to settle in microcentrifuge tubes and washed twice with PBS before fixation with 4% paraformaldehyde (PFA) for 30 min at room temperature. Fixed samples were washed twice with PBS and incubated overnight at 4°C in 30% (w/v) sucrose in PBS. Samples were then loaded into disposable embedding molds (VWR), covered in Tissue-Tek O. C.T. Sakura Finetek compound (VWR) and flash frozen on dry ice to prepare frozen blocks. The blocks were sectioned at 10  $\mu\text{m}$  and sections were placed on Superfrost Plus (Thermo Fisher) microscope slides and washed with PBS for 10 min. Slide-mounted cell sections were permeabilized and blocked with blocking buffer, consisting of 0.15% (v/v) Triton X-100 (Sigma) and 1% (v/v) normal

donkey serum (Jackson Immuno Research Laboratories) in PBS, for 1 hr at room temperature. Slides were then incubated overnight at 4°C with primary antibody solutions. The following day slides were washed five times with PBS and incubated for 1 hr at room temperature with secondary antibody solutions. Cells were washed five times with PBS before coverslips were applied.

All antibodies were diluted in blocking buffer at the ratios indicated below. Primary antibodies used were goat anti-PDX1 (1:500 dilution, Abcam ab47383), mouse anti-NKX6.1 (1:300 dilution, Developmental Studies Hybridoma Bank F64A6B4), rabbit anti-Laminin (1:30, Sigma L-9393), and rabbit anti-CRB2 (1:500, Sigma SAB1301340). Secondary antibodies against goat and mouse were Alexa488- and Cy3-conjugated donkey antibodies, respectively (Jackson Immuno Research Laboratories 705-545-003 and 715-165-150, respectively), and were used at dilutions of 1:500 (anti-goat Alexa488) or 1:1000 (anti-mouse Cy3). Cell nuclei were stained with Hoechst 33342 (1:3000, Invitrogen). Representative images were obtained with a Zeiss Axio-Observer-Z1 microscope equipped with a Zeiss ApoTome and AxioCam digital camera. Figures were prepared in Adobe Creative Suite 5.

### Flow cytometry analysis

Cell aggregates derived from hESCs were allowed to settle in microcentrifuge tubes and washed with PBS. Cell aggregates were incubated with Accutase at room temperature until a single-cell suspension was obtained. Cells were washed with 1 mL ice-cold flow buffer comprised of 0.2% BSA in PBS and centrifuged at 200 g for 5 min. BD Cytotfix/Cytoperm Plus Fixation/Permeabilization Solution Kit was used to fix and stain cells for flow cytometry according to the manufacturer's instructions. Briefly, cell pellets were re-suspended in ice-cold BD Fixation/Permeabilization solution (300  $\mu$ L per microcentrifuge tube). Cells were incubated for 20 min at 4°C. Cells were washed twice with 1 mL ice-cold 1  $\times$  BD Perm/Wash Buffer and centrifuged at 10°C and 200  $\times$  g for 5 min. Cells were re-suspended in 50  $\mu$ L ice-cold 1  $\times$  BD Perm/Wash Buffer containing diluted antibodies, for each staining performed. Cells were incubated at 4°C in the dark for 1–3 hr. Cells were washed with 1.25 mL ice-cold 1X BD Wash Buffer and centrifuged at 200  $\times$  g for 5 min. Cell pellets were re-suspended in 300  $\mu$ L ice-cold flow buffer and analyzed in a FACSCanto II (BD Biosciences). Antibodies used were PE-conjugated anti-PDX1 (1:10 dilution, BD Biosciences); and AlexaFluor 647-conjugated anti-NKX6.1 (1:5 dilution, BD Biosciences). Data were processed using FlowJo software v10.

### Whole mount immunohistochemistry

Zebrafish larvae were fixed and stained according to published protocols ([Lancman et al., 2013](#)) using the following antibodies: chicken anti-GFP (1:200; Aves Labs; GFP-1020), guinea pig anti-insulin (1:200; Biomed; v2024), mouse anti-Crb2a (1:100; ZIRC; zs-4), rabbit anti-panCrb (1:100; provided by Dr. Abbie M. Jensen at University of Massachusetts, Amherst; [Hsu and Jensen, 2010](#)), rabbit anti-Laminin (1:100; Sigma;L9393), mouse anti-Nkx6.1 (1:10; DSHB; F55A10), and DAPI (1:200; 500 mg/ml, Invitrogen; D1306).

### Imaging and quantification of beta cell numbers in zebrafish

To quantify beta cell numbers, 50 and 78 hpf zebrafish larvae were stained for confocal imaging using DAPI and guinea pig anti-insulin antibody (1:200; Biomed; v2024). Whole mount fluorescent confocal Z-stacks (0.9  $\mu$ m steps) images were collected for the entire islet with optical slices captured at a focal depth of 1.8  $\mu$ m. Samples were imaged using a Zeiss 710 confocal microscope running Zen 2010 (Black) software. Final images were generated using Adobe Photoshop CS6 and/or ImageJ64 (vs.1.48b).

### Data sources

The following datasets used in this study were downloaded from the GEO and ArrayExpress repositories:

RNA-seq: Pancreatic differentiation of CyT49 hESC line (E-MTAB-1086); primary islet data (GSE115327).

ChIP-seq: H3K27ac data in primary islets (E-MTAB-1919 and GSE51311); H3K27ac data in pancreatic differentiation of CyT49 hESC line (GSE54471); H3K4me1 data in pancreatic differentiation of CyT49 hESC line (GSE54471); H3K4me1 data in primary islets (E-MTAB-1919 and E-MTAB 189);

H3K27me3 and H3K4me3 in pancreatic differentiation of CyT49 hESC line (E-MTAB-1086); H3K4me3 and H3K27me3 in primary islets (E-MTAB-189); CTCF in primary islets (E-MTAB-1919); PDX1 in CyT49 PP2 (GSE54471); samples from ROADMAP consortium: <http://ncbi.nlm.nih.gov/geo/roadmap/epigenomics>.

ATAC-seq: primary islet data (PRJN527099); CyT49 PP2 (GSE115327).

Hi-C datasets were generated in collaboration with the Ren laboratory at University of California, San Diego as a component of the 4D Nucleome Project (*Dekker et al., 2017*) under accession number 4DNESOLVRKBM.

## Quantification and statistical analyses

Statistical analyses were performed using GraphPad Prism (v8.1.2), and R (v3.6.1). Statistical parameters, such as the value of *n*, mean, standard deviation (SD), standard error of the mean (SEM), significance level (\**p*<0.05, \*\**p*<0.01, and \*\*\**p*<0.001), and the statistical tests used, are reported in the figures and figure legends. The 'n' refers to the number of independent pancreatic differentiation experiments analyzed (biological replicates).

Statistically significant gene expression changes were determined with DESeq2 (*Love et al., 2014*).

## Acknowledgements

We thank Ileana Matta for assistance with ATAC-seq assays and library preparations, as well as the Sander and Gaulton laboratories for helpful discussions. We also thank Dr. Abbie Jensen at University of Massachusetts, Amherst for the anti-panCrb antibody. We acknowledge support of the UCSD Human Embryonic Stem Cell Core for cell sorting, as well as K Jepsen and the UCSD Institute for Genomic Medicine for library preparation and sequencing. This work was supported by NIH grants T32 GM008666 (RJG), P30 DK064391 (KJ, MS), R01 DK068471 (MS), 1DP2DK098092 (PDS), and U01 DK105541 (MS, BR, PDS); as well as the WM Keck Foundation 2017–01 (PDS), and Diabetes Research Connection Project #08 (JLL)

## Additional information

### Competing interests

Kyle J Gaulton: This author consults for Genentech. The other authors declare that no competing interests exist.

### Funding


Funder	Grant reference number	Author
National Institutes of Health	T32 GM008666	Ryan J Geusz
National Institutes of Health	P30 DK064391	Kyle J Gaulton Maike Sander
National Institutes of Health	R01 DK068471	Maike Sander
National Institutes of Health	U01 DK105541	Bing Ren P Duc Si Dong Maike Sander
National Institutes of Health	1DP2DK098092	P Duc Si Dong
W.M. Keck Foundation	2017-01	P Duc Si Dong
Diabetes Research Connection	Project #08	Joseph J Lanckman

The funders had no role in study design, data collection and interpretation, or the decision to submit the work for publication.

**Author contributions**

Ryan J Geusz, Conceptualization, Data curation, Formal analysis, Validation, Investigation, Writing - original draft, Writing - review and editing; Allen Wang, Conceptualization, Data curation, Formal analysis, Validation, Investigation, Writing - review and editing; Joshua Chiou, Conceptualization, Formal analysis, Validation, Investigation, Writing - original draft, Writing - review and editing; Joseph J Lancman, Data curation, Formal analysis, Investigation, Writing - original draft, Writing - review and editing; Nichole Wetton, Jinzhao Wang, Jian Yan, Data curation; Samy Kefalopoulou, Data curation, Writing - review and editing; Yunjiang Qiu, Anthony Aylward, Formal analysis; Bing Ren, Supervision, Funding acquisition; P Duc Si Dong, Supervision, Writing - original draft, Writing - review and editing; Kyle J Gaulton, Conceptualization, Formal analysis, Supervision, Funding acquisition, Writing - original draft, Writing - review and editing; Maïke Sander, Conceptualization, Resources, Supervision, Funding acquisition, Writing - original draft, Project administration, Writing - review and editing

**Author ORCIDs**

Ryan J Geusz  <https://orcid.org/0000-0002-4897-9305>  
 Allen Wang  <https://orcid.org/0000-0001-9870-7888>  
 Joshua Chiou  <https://orcid.org/0000-0002-4618-0647>  
 Joseph J Lancman  <https://orcid.org/0000-0003-1238-4446>  
 Yunjiang Qiu  <https://orcid.org/0000-0002-0539-9714>  
 Jian Yan  <http://orcid.org/0000-0002-1267-2870>  
 Anthony Aylward  <http://orcid.org/0000-0003-3524-856X>  
 Kyle J Gaulton  <https://orcid.org/0000-0003-1318-7161>  
 Maïke Sander  <https://orcid.org/0000-0001-5308-7785>

**Ethics**

Animal experimentation: Adult zebrafish and embryos were cared for and maintained under standard conditions. All research activity involving zebrafish was reviewed and approved by SBP Medical Discovery Institute Institutional Animal Care and Use Committee under protocol #18-014. hESC research was approved by the University of California, San Diego, Institutional Review Board and Embryonic Stem Cell Research oversight committee under project #090165ZX.

**Decision letter and Author response**

Decision letter <https://doi.org/10.7554/eLife.59067.sa1>

Author response <https://doi.org/10.7554/eLife.59067.sa2>

**Additional files****Supplementary files**

- Transparent reporting form

**Data availability**

All mRNA-seq, ChIP-seq, and ATAC-seq datasets generated for this study have been deposited at GEO under the accession number GSE149148. Source data files have been provided for Figures 2, 4, and 5.

The following dataset was generated:

Author(s)	Year	Dataset title	Dataset URL	Database and Identifier
Geusz RJ, Wang A, Chiou J, Lancman JJ, Wetton N, Kefalopoulou S, Wang J, Qiu Y, Yan J, Aylward A, Ren	2021	Pancreatic progenitor epigenome maps prioritize type 2 diabetes risk genes with roles in development	<a href="https://www.ncbi.nlm.nih.gov/geo/query/acc.cgi?acc=GSE149148">https://www.ncbi.nlm.nih.gov/geo/query/acc.cgi?acc=GSE149148</a>	NCBI Gene Expression Omnibus, GSE149148



B, Si Dong PD,  
Gaulton KJ, Sander  
M

The following previously published datasets were used:

Author(s)	Year	Dataset title	Dataset URL	Database and Identifier
Xie R, Everett LJ, Lim HW, Patel NA, Schug J, Kroon E, Kelly OG, Wang A, D'Amour KA, Robins AJ, Won KJ, Kaestner KH, Sander M	2013	ChIP-seq and RNA-seq of coding RNA of the progression of human embryonic stem cells to beta cells to characterize the epigenetic programs that underlie pancreas differentiation	<a href="https://www.ebi.ac.uk/arrayexpress/experiments/E-MTAB-1086/">https://www.ebi.ac.uk/arrayexpress/experiments/E-MTAB-1086/</a>	ArrayExpress, E-MTAB-1086
Jin W, Mulas F, Gaertner B, Sui Y, Wang J, Matta I, Zeng C, Vinckier N, Wang A, Nguyen-Ngoc K, Chiou J, Kaestner KH, Frazer KA, Carrano AC, Shih H	2019	Identification of microRNA-dependent gene regulatory networks driving human pancreatic endocrine cell differentiation	<a href="https://www.ncbi.nlm.nih.gov/geo/query/acc.cgi?acc=GSE115327">https://www.ncbi.nlm.nih.gov/geo/query/acc.cgi?acc=GSE115327</a>	NCBI Gene Expression Omnibus, GSE115327
Pasquali L, Gaulton KJ, Rodríguez-Seguí SA, Mularoni L, Miguel-Escalada I, Akerman I, Tena JJ, Morán I, Gómez-Marín C, van de Bunt M, Ponsa-Cobas J, Castro N, Nammo T, Cebola I, García-Hurtado J, Maestro MA, Pattou F, Piemonti L, Berney T, Gloyn AL, Ravassard P, Gómez-Skarmeta JL, Müller F, McCarthy MI, Ferrer J	2014	Pancreatic islet epigenomics reveals enhancer clusters that are enriched in Type 2 diabetes risk variants	<a href="https://www.ebi.ac.uk/arrayexpress/experiments/E-MTAB-1919/">https://www.ebi.ac.uk/arrayexpress/experiments/E-MTAB-1919/</a>	ArrayExpress, E-MTAB-1919
Parker SC, Stitzel ML, Taylor DL, Orozco JM	2013	Chromatin stretch enhancer states drive cell-specific gene regulation and harbor human disease risk variants (ChIP-seq)	<a href="https://www.ncbi.nlm.nih.gov/geo/query/acc.cgi?acc=GSE51311">https://www.ncbi.nlm.nih.gov/geo/query/acc.cgi?acc=GSE51311</a>	NCBI Gene Expression Omnibus, GSE51311
Wang A, Yue F, Li Y, Xie R	2015	Developmental Competence Encoded at the Level of Enhancers	<a href="https://www.ncbi.nlm.nih.gov/geo/query/acc.cgi?acc=GSE54471">https://www.ncbi.nlm.nih.gov/geo/query/acc.cgi?acc=GSE54471</a>	NCBI Gene Expression Omnibus, GSE54471
Bhandare R, Schug J, Lay JL, Fox A, Smirnova O, Liu C, Naji A, Kaestner KH	2010	ChIP-Seq of human normal pancreatic islets with anti-histone antibodies to analyse histone modifications	<a href="https://www.ebi.ac.uk/arrayexpress/experiments/E-MTAB-189/">https://www.ebi.ac.uk/arrayexpress/experiments/E-MTAB-189/</a>	ArrayExpress, E-MTAB-189
University of California San Diego	2015	ATAC-seq in pancreatic islet cells	<a href="https://www.ncbi.nlm.nih.gov/bioproject/527099">https://www.ncbi.nlm.nih.gov/bioproject/527099</a>	NCBI BioProject, PRJNA527099
4DN Network, Ren Laboratory	2020	Replicates of Hi-C on CyT49 cells	<a href="https://data.4dnucleome.org/experiment-set-replicates/4DNE-">https://data.4dnucleome.org/experiment-set-replicates/4DNE-</a>	4D Nucleome, Sample4DNES0LVRKBM

		differentiated to pancreatic endoderm	SOLVRKBM/#processed-files	
Lister R, Pelizzola M, Downen RH, Hawkins RD, Hon G, Tonti-Filippini J, Nery JR, Lee L, Ye Z, Ngo Q, Edsall L, Antosiewicz-Bourget J, Stewart R, Ruotti V, Millar AH, Thomson JA, Ren B, Ecker JR	2009	UCSD Human Reference Epigenome Mapping Project	<a href="https://www.ncbi.nlm.nih.gov/geo/query/acc.cgi?acc=GSE16256">https://www.ncbi.nlm.nih.gov/geo/query/acc.cgi?acc=GSE16256</a>	NCBI Gene Expression Omnibus, GSE16256
Bernstein BE, Stamatoyannopoulos JA, Costello JF, Ren B, Milosavljevic A, Meissner A, Kellis M, Marra MA, Beaudet AL, Ecker JR, Farnham PJ, Hirst M, Lander ES, Mikkelsen TJ, Thomson JA	2010	UCSF-UBC Human Reference Epigenome Mapping Project	<a href="https://www.ncbi.nlm.nih.gov/geo/query/acc.cgi?acc=GSE16368">https://www.ncbi.nlm.nih.gov/geo/query/acc.cgi?acc=GSE16368</a>	NCBI Gene Expression Omnibus, GSE16368
Bernstein BE, Stamatoyannopoulos JA, Costello JF, Ren B, Milosavljevic A, Meissner A, Kellis M, Marra MA, Beaudet AL, Ecker JR, Farnham PJ, Hirst M, Lander ES, Mikkelsen TJ, Thomson JA	2009	BI Human Reference Epigenome Mapping Project	<a href="https://www.ncbi.nlm.nih.gov/geo/query/acc.cgi?acc=GSE17312">https://www.ncbi.nlm.nih.gov/geo/query/acc.cgi?acc=GSE17312</a>	NCBI Gene Expression Omnibus, GSE17312
Bernstein BE, Stamatoyannopoulos JA, Costello JF, Ren B, Milosavljevic A, Meissner A, Kellis M, Marra MA, Beaudet AL, Ecker JR, Farnham PJ, Hirst M, Lander ES, Mikkelsen TJ, Thomson JA	2010	University of Washington Human Reference Epigenome Mapping Project	<a href="https://www.ncbi.nlm.nih.gov/geo/query/acc.cgi?acc=GSE18927">https://www.ncbi.nlm.nih.gov/geo/query/acc.cgi?acc=GSE18927</a>	NCBI Gene Expression Omnibus, GSE18927

## References

- Ahnfelt-Rønne J**, Ravassard P, Pardanaud-Glavieux C, Scharfmann R, Serup P. 2010. Mesenchymal bone morphogenetic protein signaling is required for normal pancreas development. *Diabetes* **59**:1948–1956. DOI: <https://doi.org/10.2337/db09-1010>, PMID: 20522595
- Alves CH**, Bossers K, Vos RM, Essing AH, Swagemakers S, van der Spek PJ, Verhaagen J, Wijnholds J. 2013. Microarray and morphological analysis of early postnatal CRB2 mutant retinas on a pure C57BL/6J genetic background. *PLOS ONE* **8**:e82532. DOI: <https://doi.org/10.1371/journal.pone.0082532>, PMID: 24324803
- Aylward A**, Chiou J, Okino M-L, Kadakia N, Gaulton KJ. 2018. Shared genetic risk contributes to type 1 and type 2 diabetes etiology. *Human Molecular Genetics* **7**:314. DOI: <https://doi.org/10.1093/hmg/ddy314>
- Bhandare R**, Schug J, Le Lay J, Fox A, Smirnova O, Liu C, Naji A, Kaestner KH. 2010. Genome-wide analysis of histone modifications in human pancreatic islets. *Genome Research* **20**:428–433. DOI: <https://doi.org/10.1101/gr.102038.109>, PMID: 20181961
- Buenrostro JD**, Giresi PG, Zaba LC, Chang HY, Greenleaf WJ. 2013. Transposition of native chromatin for fast and sensitive epigenomic profiling of open chromatin, DNA-binding proteins and nucleosome position. *Nature Methods* **10**:1213–1218. DOI: <https://doi.org/10.1038/nmeth.2688>, PMID: 24097267
- Bulgakova NA**, Knust E. 2009. The crumbs complex: from epithelial-cell polarity to retinal degeneration. *Journal of Cell Science* **122**:2587–2596. DOI: <https://doi.org/10.1242/jcs.023648>, PMID: 19625503
- Bulik-Sullivan BK**, Loh PR, Finucane HK, Ripke S, Yang J, Patterson N, Daly MJ, Price AL, Neale BM, Schizophrenia Working Group of the Psychiatric Genomics Consortium. 2015. LD score regression distinguishes confounding from polygenicity in genome-wide association studies. *Nature Genetics* **47**:291–295. DOI: <https://doi.org/10.1038/ng.3211>, PMID: 25642630
- Cebola I**, Rodríguez-Seguí SA, Cho CH, Bessa J, Rovira M, Luengo M, Chhatrivala M, Berry A, Ponsa-Cobas J, Maestro MA, Jennings RE, Pasquali L, Morán I, Castro N, Hanley NA, Gomez-Skarmeta JL, Vallier L, Ferrer J. 2015. TEAD and YAP regulate the enhancer network of human embryonic pancreatic progenitors. *Nature Cell Biology* **17**:615–626. DOI: <https://doi.org/10.1038/ncb3160>, PMID: 25915126
- Chiou J**, Zeng C, Cheng Z, Han JY, Schlichting M, Huang S, Wang J, Sui Y, Deogaygay A, Okino M-L, Qiu Y, Sun Y, Kudtarkar P, Fang R, Preissl S, Sander M, Gorkin D, Gaulton KJ. 2019. Single cell chromatin accessibility reveals pancreatic islet cell type- and state-specific regulatory programs of diabetes risk. *bioRxiv*. DOI: <https://doi.org/10.1101/693671>
- Claussnitzer M**, Dankel SN, Klocke B, Grallert H, Glunk V, Berulava T, Lee H, Oskolkov N, Fadista J, Ehlers K, Wahl S, Hoffmann C, Qian K, Rönn T, Riess H, Müller-Nurasyid M, Bretschneider N, Schroeder T, Skurk T,

- Horsthemke B, et al. 2014. Leveraging cross-species transcription factor binding site patterns: from diabetes risk loci to disease mechanisms. *Cell* **156**:343–358. DOI: <https://doi.org/10.1016/j.cell.2013.10.058>, PMID: 24439387
- Conrad E, Stein R, Hunter CS. 2014. Revealing transcription factors during human pancreatic  $\beta$  cell development. *Trends in Endocrinology & Metabolism* **25**:407–414. DOI: <https://doi.org/10.1016/j.tem.2014.03.013>, PMID: 24831984
- Dekker J, Belmont AS, Guttman M, Leshyk VO, Lis JT, Lomvardas S, Mirny LA, O’Shea CC, Park PJ, Ren B, Politz JCR, Shendure J, Zhong S, 4D Nucleome Network. 2017. The 4D nucleome project. *Nature* **549**:219–226. DOI: <https://doi.org/10.1038/nature23884>, PMID: 28905911
- Dixon JR, Jung I, Selvaraj S, Shen Y, Antosiewicz-Bourget JE, Lee AY, Ye Z, Kim A, Rajagopal N, Xie W, Diao Y, Liang J, Zhao H, Lobanenkov VV, Ecker JR, Thomson JA, Ren B. 2015. Chromatin architecture reorganization during stem cell differentiation. *Nature* **518**:331–336. DOI: <https://doi.org/10.1038/nature14222>, PMID: 25693564
- Dobin A, Davis CA, Schlesinger F, Drenkow J, Zaleski C, Jha S, Batut P, Chaisson M, Gingeras TR. 2013. STAR: ultrafast universal RNA-seq aligner. *Bioinformatics* **29**:15–21. DOI: <https://doi.org/10.1093/bioinformatics/bts635>, PMID: 23104886
- Dong PD, Provost E, Leach SD, Stainier DY. 2008. Graded levels of Ptf1a differentially regulate endocrine and exocrine fates in the developing pancreas. *Genes & Development* **22**:1445–1450. DOI: <https://doi.org/10.1101/gad.1663208>, PMID: 18519637
- Dudok JJ, Murtaza M, Henrique Alves C, Rashbass P, Wijnholds J. 2016. Crumbs 2 prevents cortical abnormalities in mouse dorsal telencephalon. *Neuroscience Research* **108**:12–23. DOI: <https://doi.org/10.1016/j.neures.2016.01.001>, PMID: 26802325
- Dupuis J, Langenberg C, Prokopenko I, Saxena R, Soranzo N, Jackson AU, Wheeler E, Glazer NL, Bouatia-Naji N, Gloy AL, Lindgren CM, Mägi R, Morris AP, Randall J, Johnson T, Elliott P, Rybin D, Thorleifsson G, Steinthorsdottir V, Henneman P, et al. 2010. New genetic loci implicated in fasting glucose homeostasis and their impact on type 2 diabetes risk. *Nature Genetics* **42**:105–116. DOI: <https://doi.org/10.1038/ng.520>, PMID: 20081858
- Durand NC, Robinson JT, Shamim MS, Machol I, Mesirov JP, Lander ES, Aiden EL. 2016. Juicebox provides a visualization system for Hi-C contact maps with unlimited zoom. *Cell Systems* **3**:99–101. DOI: <https://doi.org/10.1016/j.cels.2015.07.012>, PMID: 27467250
- ENCODE Project Consortium. 2012. An integrated encyclopedia of DNA elements in the human genome. *Nature* **489**:57–74. DOI: <https://doi.org/10.1038/nature11247>, PMID: 22955616
- Ernst J, Kellis M. 2012. ChromHMM: automating chromatin-state discovery and characterization. *Nature Methods* **9**:215–216. DOI: <https://doi.org/10.1038/nmeth.1906>, PMID: 22373907
- Field HA, Dong PD, Beis D, Stainier DY. 2003. Formation of the digestive system in zebrafish II pancreas morphogenesis. *Developmental Biology* **261**:197–208. DOI: [https://doi.org/10.1016/S0012-1606\(03\)00308-7](https://doi.org/10.1016/S0012-1606(03)00308-7), PMID: 12941629
- Finucane HK, Bulik-Sullivan B, Gusev A, Trynka G, Reshef Y, Loh PR, Anttila V, Xu H, Zang C, Farh K, Ripke S, Day FR, Purcell S, Stahl E, Lindstrom S, Perry JR, Okada Y, Raychaudhuri S, Daly MJ, Patterson N, et al. 2015. Partitioning heritability by functional annotation using genome-wide association summary statistics. *Nature Genetics* **47**:1228–1235. DOI: <https://doi.org/10.1038/ng.3404>, PMID: 26414678
- Flannick J, Mercader JM, Fuchsberger C, Udler MS, Mahajan A, Wessel J, Teslovich TM, Caulkins L, Koesterer R, Barajas-Olmos F, Blackwell TW, Boerwinkle E, Brody JA, Centeno-Cruz F, Chen L, Chen S, Contreras-Cubas C, Córdova E, Correa A, Cortes M, et al. 2019. Exome sequencing of 20,791 cases of type 2 diabetes and 24,440 controls. *Nature* **570**:71–76. DOI: <https://doi.org/10.1038/s41586-019-1231-2>, PMID: 31118516
- Fuchsberger C, Flannick J, Teslovich TM, Mahajan A, Agarwala V, Gaulton KJ, Ma C, Fontanillas P, Moutsianas L, McCarthy DJ, Rivas MA, Perry JRB, Sim X, Blackwell TW, Robertson NR, Rayner NW, Cingolani P, Locke AE, Tajcs JF, Highland HM, et al. 2016. The genetic architecture of type 2 diabetes. *Nature* **536**:41–47. DOI: <https://doi.org/10.1038/nature18642>, PMID: 27398621
- Gaertner B, Carrano AC, Sander M. 2019. Human stem cell models: lessons for pancreatic development and disease. *Genes & Development* **33**:1475–1490. DOI: <https://doi.org/10.1101/gad.331397.119>, PMID: 31676735
- Gaulton KJ, Nammo T, Pasquali L, Simon JM, Giresi PG, Fogarty MP, Panhuis TM, Mieczkowski P, Secchi A, Bosco D, Berney T, Montanya E, Mohlke KL, Lieb JD, Ferrer J. 2010. A map of open chromatin in human pancreatic islets. *Nature Genetics* **42**:255–259. DOI: <https://doi.org/10.1038/ng.530>, PMID: 20118932
- Gaulton KJ, Ferreira T, Lee Y, Raimondo A, Mägi R, Reschen ME, Mahajan A, Locke A, Rayner NW, Robertson N, Scott RA, Prokopenko I, Scott LJ, Green T, Sparso T, Thuillier D, Yengo L, Grallert H, Wahl S, Frånberg M, et al. 2015. Genetic fine mapping and genomic annotation defines causal mechanisms at type 2 diabetes susceptibility loci. *Nature Genetics* **47**:1415–1425. DOI: <https://doi.org/10.1038/ng.3437>, PMID: 26551672
- Godinho L, Mumm JS, Williams PR, Schroeter EH, Koerber A, Park SW, Leach SD, Wong RO. 2005. Targeting of amacrine cell neurites to appropriate synaptic laminae in the developing zebrafish retina. *Development* **132**:5069–5079. DOI: <https://doi.org/10.1242/dev.02075>, PMID: 16258076
- Grant CE, Bailey TL, Noble WS. 2011. FIMO: scanning for occurrences of a given motif. *Bioinformatics* **27**:1017–1018. DOI: <https://doi.org/10.1093/bioinformatics/btr064>, PMID: 21330290
- Greenwald WW, Chiou J, Yan J, Qiu Y, Dai N, Wang A, Nariai N, Aylward A, Han JY, Kadakia N, Regue L, Okino ML, Drees F, Kramer D, Vinckier N, Minichiello L, Gorkin D, Avruch J, Frazer KA, Sander M, et al. 2019. Pancreatic islet chromatin accessibility and conformation reveals distal enhancer networks of type 2 diabetes risk. *Nature Communications* **10**:2078. DOI: <https://doi.org/10.1038/s41467-019-09975-4>, PMID: 31064983

- Halban PA**, Polonsky KS, Bowden DW, Hawkins MA, Ling C, Mather KJ, Powers AC, Rhodes CJ, Sussel L, Weir GC. 2014.  $\beta$ -cell failure in type 2 diabetes: postulated mechanisms and prospects for prevention and treatment. *Diabetes Care* **37**:1751–1758. DOI: <https://doi.org/10.2337/dc14-0396>, PMID: 24812433
- Heinz S**, Benner C, Spann N, Bertolino E, Lin YC, Laslo P, Cheng JX, Murre C, Singh H, Glass CK. 2010. Simple combinations of lineage-determining transcription factors prime cis-regulatory elements required for macrophage and B cell identities. *Molecular Cell* **38**:576–589. DOI: <https://doi.org/10.1016/j.molcel.2010.05.004>, PMID: 20513432
- Heymans C**, Degosserie J, Spourquet C, Pierreux CE. 2019. Pancreatic acinar differentiation is guided by differential laminin deposition. *Scientific Reports* **9**:2711. DOI: <https://doi.org/10.1038/s41598-019-39077-6>, PMID: 30804366
- Horikoshi M**, Beaumont RN, Day FR, Warrington NM, Kooijman MN, Fernandez-Tajés J, Feenstra B, van Zuydam NR, Gaulton KJ, Grarup N, Bradfield JP, Strachan DP, Li-Gao R, Ahluwalia TS, Kreiner E, Rueedi R, Lyttikäinen LP, Cousminer DL, Wu Y, Thiering E, et al. 2016. Genome-wide associations for birth weight and correlations with adult disease. *Nature* **538**:248–252. DOI: <https://doi.org/10.1038/nature19806>, PMID: 27680694
- Hsu YC**, Jensen AM. 2010. Multiple domains in the crumbs homolog 2a (Crb2a) protein are required for regulating rod photoreceptor size. *BMC Cell Biology* **11**:60. DOI: <https://doi.org/10.1186/1471-2121-11-60>, PMID: 20670434
- Jiménez-Amilburu V**, Stainier DYR. 2019. The transmembrane protein Crb2a regulates cardiomyocyte apicobasal polarity and adhesion in zebrafish. *Development* **146**:dev171207. DOI: <https://doi.org/10.1242/dev.171207>, PMID: 30992276
- Jin W**, Mulas F, Gaertner B, Sui Y, Wang J, Matta I, Zeng C, Vinckier N, Wang A, Nguyen-Ngoc KV, Chiou J, Kaestner KH, Frazer KA, Carrano AC, Shih HP, Sander M. 2019. A network of microRNAs acts to promote cell cycle exit and differentiation of human pancreatic endocrine cells. *iScience* **21**:681–694. DOI: <https://doi.org/10.1016/j.isci.2019.10.063>, PMID: 31733514
- Kent WJ**, Sugnet CW, Furey TS, Roskin KM, Pringle TH, Zahler AM, Haussler D. 2002. The human genome browser at UCSC. *Genome Research* **12**:996–1006. DOI: <https://doi.org/10.1101/gr.229102>, PMID: 12045153
- Khetan S**, Kursawe R, Youn A, Lawlor N, Jillette A, Marquez EJ, Ucar D, Stitzel ML. 2018. Type 2 Diabetes-Associated genetic variants regulate chromatin accessibility in human islets. *Diabetes* **67**:2466–2477. DOI: <https://doi.org/10.2337/db18-0393>, PMID: 30181159
- Kimmel RA**, Dobler S, Schmitner N, Walsen T, Freudenblum J, Meyer D. 2015. Diabetic pdx1-mutant zebrafish show conserved responses to nutrient overload and anti-glycemic treatment. *Scientific Reports* **5**:14241. DOI: <https://doi.org/10.1038/srep14241>, PMID: 26384018
- Kundaje A**, Meuleman W, Ernst J, Bilenky M, Yen A, Heravi-Moussavi A, Kheradpour P, Zhang Z, Wang J, Ziller MJ, Amin V, Whitaker JW, Schultz MD, Ward LD, Sarkar A, Quon G, Sandstrom RS, Eaton ML, Wu YC, Pfenning AR, et al. 2015. Integrative analysis of 111 reference human epigenomes. *Nature* **518**:317–330. DOI: <https://doi.org/10.1038/nature14248>, PMID: 25693563
- Lancman JJ**, Zvenigorodsky N, Gates KP, Zhang D, Solomon K, Humphrey RK, Kuo T, Setiawan L, Verkade H, Chiou YI, Jhala US, Wright CV, Stainier DY, Dong PD. 2013. Specification of hepatopancreas progenitors in zebrafish by *hnf1ba* and *wnt2bb*. *Development* **140**:2669–2679. DOI: <https://doi.org/10.1242/dev.090993>, PMID: 23720049
- Li H**, Handsaker B, Wysoker A, Fennell T, Ruan J, Homer N, Marth G, Abecasis G, Durbin R, 1000 Genome Project Data Processing Subgroup. 2009. The sequence alignment/Map format and SAMtools. *Bioinformatics* **25**:2078–2079. DOI: <https://doi.org/10.1093/bioinformatics/btp352>, PMID: 19505943
- Li XY**, Zhai WJ, Teng CB. 2015. Notch signaling in pancreatic development. *International Journal of Molecular Sciences* **17**:48. DOI: <https://doi.org/10.3390/ijms17010048>
- Li H**, Durbin R. 2009. Fast and accurate short read alignment with Burrows-Wheeler transform. *Bioinformatics* **25**:1754–1760. DOI: <https://doi.org/10.1093/bioinformatics/btp324>, PMID: 19451168
- Love MI**, Huber W, Anders S. 2014. Moderated estimation of fold change and dispersion for RNA-seq data with DESeq2. *Genome Biology* **15**:550. DOI: <https://doi.org/10.1186/s13059-014-0550-8>, PMID: 25516281
- Lumey LH**, Khalangot MD, Vaiserman AM. 2015. Association between type 2 diabetes and prenatal exposure to the Ukraine famine of 1932–33: a retrospective cohort study. *The Lancet Diabetes & Endocrinology* **3**:787–794. DOI: [https://doi.org/10.1016/S2213-8587\(15\)00279-X](https://doi.org/10.1016/S2213-8587(15)00279-X), PMID: 26342852
- Mahajan A**, Taliun D, Thurner M, Robertson NR, Torres JM, Rayner NW, Payne AJ, Steinthorsdottir V, Scott RA, Grarup N, Cook JP, Schmidt EM, Wuttke M, Sarnowski C, Mägi R, Nano J, Gieger C, Trompet S, Lecoer C, Preuss MH, et al. 2018. Fine-mapping type 2 diabetes loci to single-variant resolution using high-density imputation and islet-specific epigenome maps. *Nature Genetics* **50**:1505–1513. DOI: <https://doi.org/10.1038/s41588-018-0241-6>, PMID: 30297969
- Mamidi A**, Prawiro C, Seymour PA, de Lichtenberg KH, Jackson A, Serup P, Semb H. 2018. Mechanosignalling via integrins directs fate decisions of pancreatic progenitors. *Nature* **564**:114–118. DOI: <https://doi.org/10.1038/s41586-018-0762-2>, PMID: 30487608
- Manning AK**, Hivert MF, Scott RA, Grimsby JL, Bouatia-Naji N, Chen H, Rybin D, Liu CT, Bielak LF, Prokopenko I, Amin N, Barnes D, Cadby G, Hottenga JJ, Ingelsson E, Jackson AU, Johnson T, Kanoni S, Ladenvall C, Lagou V, et al. 2012. A genome-wide approach accounting for body mass index identifies genetic variants influencing fasting glycemic traits and insulin resistance. *Nature Genetics* **44**:659–669. DOI: <https://doi.org/10.1038/ng.2274>, PMID: 22581228

- Masui T, Long Q, Beres TM, Magnuson MA, MacDonald RJ. 2007. Early pancreatic development requires the vertebrate suppressor of hairless (RBPJ) in the PTF1 bHLH complex. *Genes & Development* **21**:2629–2643. DOI: <https://doi.org/10.1101/gad.1575207>, PMID: 17938243
- Mathelier A, Fornes O, Arenillas DJ, Chen CY, Denay G, Lee J, Shi W, Shyr C, Tan G, Worsley-Hunt R, Zhang AW, Parcy F, Lenhard B, Sandelin A, Wasserman WW. 2016. JASPAR 2016: a major expansion and update of the open-access database of transcription factor binding profiles. *Nucleic Acids Research* **44**:D110–D115. DOI: <https://doi.org/10.1093/nar/gkv1176>, PMID: 26531826
- Mikkelsen TS, Xu Z, Zhang X, Wang L, Gimble JM, Lander ES, Rosen ED. 2010. Comparative epigenomic analysis of murine and human adipogenesis. *Cell* **143**:156–169. DOI: <https://doi.org/10.1016/j.cell.2010.09.006>, PMID: 20887899
- Murtaugh LC. 2008. The what, where, when and how of wnt/ $\beta$ -catenin signaling in pancreas development. *Organogenesis* **4**:81–86. DOI: <https://doi.org/10.4161/org.4.2.5853>, PMID: 18953422
- Nielsen JH, Haase TN, Jaksch C, Nalla A, Søstrup B, Nalla AA, Larsen L, Rasmussen M, Dalgaard LT, Gaarn LW, Thams P, Kofod H, Billestrup N. 2014. Impact of fetal and neonatal environment on beta cell function and development of diabetes. *Acta Obstetrica Et Gynecologica Scandinavica* **93**:1109–1122. DOI: <https://doi.org/10.1111/aogs.12504>, PMID: 25225114
- Nikolova G, Jabs N, Konstantinova I, Domogatskaya A, Tryggvason K, Sorokin L, Fässler R, Gu G, Gerber HP, Ferrara N, Melton DA, Lammert E. 2006. The vascular basement membrane: a niche for insulin gene expression and beta cell proliferation. *Developmental Cell* **10**:397–405. DOI: <https://doi.org/10.1016/j.devcel.2006.01.015>, PMID: 16516842
- Omori Y, Malicki J. 2006. Oko meduzy and related crumbs genes are determinants of apical cell features in the vertebrate embryo. *Current Biology* **16**:945–957. DOI: <https://doi.org/10.1016/j.cub.2006.03.058>, PMID: 16713951
- Parker SC, Stitzel ML, Taylor DL, Orozco JM, Erdos MR, Akiyama JA, van Bueren KL, Chines PS, Narisu N, Black BL, Visel A, Pennacchio LA, Collins FS, NISC Comparative Sequencing Program, National Institutes of Health Intramural Sequencing Center Comparative Sequencing Program Authors, NISC Comparative Sequencing Program Authors. 2013. Chromatin stretch enhancer states drive cell-specific gene regulation and harbor human disease risk variants. *PNAS* **110**:17921–17926. DOI: <https://doi.org/10.1073/pnas.1317023110>, PMID: 24127591
- Pasquali L, Gaulton KJ, Rodríguez-Seguí SA, Mularoni L, Miguel-Escalada I, Akerman I, Tena JJ, Morán I, Gómez-Marín C, van de Bunt M, Ponsa-Cobas J, Castro N, Nammo T, Cebola I, García-Hurtado J, Maestro MA, Pattou F, Piemonti L, Berney T, Gloyn AL, et al. 2014. Pancreatic islet enhancer clusters enriched in type 2 diabetes risk-associated variants. *Nature Genetics* **46**:136–143. DOI: <https://doi.org/10.1038/ng.2870>, PMID: 24413736
- Perry JR, Voight BF, Yengo L, Amin N, Dupuis J, Ganser M, Grallert H, Navarro P, Li M, Qi L, Steinthorsdottir V, Scott RA, Almgren P, Arking DE, Aulchenko Y, Balkau B, Benediktsson R, Bergman RN, Boerwinkle E, Bonnycastle L, et al. 2012. Stratifying type 2 diabetes cases by BMI identifies genetic risk variants in LAMA1 and enrichment for risk variants in lean compared to obese cases. *PLOS Genetics* **8**:e1002741. DOI: <https://doi.org/10.1371/journal.pgen.1002741>, PMID: 22693455
- Pique-Regi R, Degner JF, Pai AA, Gaffney DJ, Gilad Y, Pritchard JK. 2011. Accurate inference of transcription factor binding from DNA sequence and chromatin accessibility data. *Genome Research* **21**:447–455. DOI: <https://doi.org/10.1101/gr.112623.110>, PMID: 21106904
- Pollard SM, Parsons MJ, Kamei M, Kettleborough RN, Thomas KA, Pham VN, Bae MK, Scott A, Weinstein BM, Stemple DL. 2006. Essential and overlapping roles for laminin alpha chains in notochord and blood vessel formation. *Developmental Biology* **289**:64–76. DOI: <https://doi.org/10.1016/j.ydbio.2005.10.006>, PMID: 16321372
- Portha B, Chavey A, Movassat J. 2011. Early-Life origins of type 2 diabetes: fetal programming of the Beta-Cell mass. *Experimental Diabetes Research* **2011**:1–16. DOI: <https://doi.org/10.1155/2011/105076>
- Qiu Y. 2021. Pancreatic-Progenitor-Epigenome-Maps-Prioritize-Type-2-Diabetes-Risk-Genes-with-Roles-in-Development. *GitHub*. 3.0. <https://github.com/MSanderlab/Pancreatic-progenitor-epigenome-maps-prioritize-type-2-diabetes-risk-genes-with-roles-in-development>
- Quinlan AR, Hall IM. 2010. BEDTools: a flexible suite of utilities for comparing genomic features. *Bioinformatics* **26**:841–842. DOI: <https://doi.org/10.1093/bioinformatics/btq033>, PMID: 20110278
- Rada-Iglesias A, Bajpai R, Swigut T, Bruggmann SA, Flynn RA, Wysocka J. 2011. A unique chromatin signature uncovers early developmental enhancers in humans. *Nature* **470**:279–283. DOI: <https://doi.org/10.1038/nature09692>, PMID: 21160473
- Ramírez F, Ryan DP, Grüning B, Bhardwaj V, Kilpert F, Richter AS, Heyne S, Dündar F, Manke T. 2016. deepTools2: a next generation web server for deep-sequencing data analysis. *Nucleic Acids Research* **44**:W160–W165. DOI: <https://doi.org/10.1093/nar/gkw257>, PMID: 27079975
- Rao SS, Huntley MH, Durand NC, Stamenova EK, Bochkov ID, Robinson JT, Sanborn AL, Machol I, Omer AD, Lander ES, Aiden EL. 2014. A 3D map of the human genome at Kilobase resolution reveals principles of chromatin looping. *Cell* **159**:1665–1680. DOI: <https://doi.org/10.1016/j.cell.2014.11.021>, PMID: 25497547
- Rezania A, Bruin JE, Arora P, Rubin A, Batushansky I, Asadi A, O'Dwyer S, Quiskamp N, Mojibian M, Albrecht T, Yang YH, Johnson JD, Kieffer TJ. 2014. Reversal of diabetes with insulin-producing cells derived in vitro from human pluripotent stem cells. *Nature Biotechnology* **32**:1121–1133. DOI: <https://doi.org/10.1038/nbt.3033>, PMID: 25211370
- Rozowsky J, Abyzov A, Wang J, Alves P, Raha D, Harmanci A, Leng J, Bjornson R, Kong Y, Kitabayashi N, Bhardwaj N, Rubin M, Snyder M, Gerstein M. 2011. AlleleSeq: analysis of allele-specific expression and binding



- in a network framework. *Molecular Systems Biology* **7**:522. DOI: <https://doi.org/10.1038/msb.2011.54>, PMID: 21811232
- Saxena R**, Hivert MF, Langenberg C, Tanaka T, Pankow JS, Vollenweider P, Lyssenko V, Bouatia-Naji N, Dupuis J, Jackson AU, Kao WH, Li M, Glazer NL, Manning AK, Luan J, Stringham HM, Prokopenko I, Johnson T, Grarup N, Boesgaard TW, et al. 2010. Genetic variation in GIPR influences the glucose and insulin responses to an oral glucose challenge. *Nature Genetics* **42**:142–148. DOI: <https://doi.org/10.1038/ng.521>, PMID: 20081857
- Schulz TC**, Young HY, Agulnick AD, Babin MJ, Baetge EE, Bang AG, Bhoumik A, Cepa I, Cesario RM, Haakmeester C, Kadoya K, Kelly JR, Kerr J, Martinson LA, McLean AB, Moorman MA, Payne JK, Richardson M, Ross KG, Sherrer ES, et al. 2012. A scalable system for production of functional pancreatic progenitors from human embryonic stem cells. *PLOS ONE* **7**:e37004. DOI: <https://doi.org/10.1371/journal.pone.0037004>, PMID: 22623968
- Sharon N**, Vanderhoof J, Straubhaar J, Mueller J, Chawla R, Zhou Q, Engquist EN, Trapnell C, Gifford DK, Melton DA. 2019. Wnt signaling separates the progenitor and endocrine compartments during pancreas development. *Cell Reports* **27**:2281–2291. DOI: <https://doi.org/10.1016/j.celrep.2019.04.083>, PMID: 31116975
- Shi ZD**, Lee K, Yang D, Amin S, Verma N, Li QV, Zhu Z, Soh CL, Kumar R, Evans T, Chen S, Huangfu D. 2017. Genome editing in hPSCs reveals GATA6 haploinsufficiency and a genetic interaction with GATA4 in human pancreatic development. *Cell Stem Cell* **20**:675–688. DOI: <https://doi.org/10.1016/j.stem.2017.01.001>, PMID: 28196600
- Slavotinek A**, Kaylor J, Pierce H, Cahr M, DeWard SJ, Schneidman-Duhovny D, Alsadah A, Salem F, Schmajuk G, Mehta L. 2015. CRB2 mutations produce a phenotype resembling congenital nephrosis, finnish type, with cerebral ventriculomegaly and raised alpha-fetoprotein. *The American Journal of Human Genetics* **96**:162–169. DOI: <https://doi.org/10.1016/j.ajhg.2014.11.013>, PMID: 25557780
- Steinthorsdottir V**, Thorleifsson G, Sulem P, Helgason H, Grarup N, Sigurdsson A, Helgadottir HT, Johannsdottir H, Magnusson OT, Gudjonsson SA, Justesen JM, Harder MN, Jørgensen ME, Christensen C, Brandslund I, Sandbæk A, Lauritzen T, Vestergaard H, Linneberg A, Jørgensen T, et al. 2014. Identification of low-frequency and rare sequence variants associated with elevated or reduced risk of type 2 diabetes. *Nature Genetics* **46**:294–298. DOI: <https://doi.org/10.1038/ng.2882>, PMID: 24464100
- Strawbridge RJ**, Dupuis J, Prokopenko I, Barker A, Ahlqvist E, Rybin D, Petrie JR, Travers ME, Bouatia-Naji N, Dimas AS, Nica A, Wheeler E, Chen H, Voight BF, Taneera J, Kanoni S, Peden JF, Turrini F, Gustafsson S, Zabena C, et al. 2011. Genome-Wide association identifies nine common variants associated with fasting proinsulin levels and provides new insights into the pathophysiology of type 2 diabetes. *Diabetes* **60**:2624–2634. DOI: <https://doi.org/10.2337/db11-0415>
- Sui L**, Geens M, Sermon K, Bouwens L, Mfopou JK. 2013. Role of BMP signaling in pancreatic progenitor differentiation from human embryonic stem cells. *Stem Cell Reviews and Reports* **9**:569–577. DOI: <https://doi.org/10.1007/s12015-013-9435-6>, PMID: 23468018
- Taal HR**, Pourcain BS, Thiering E, Das S, Mook-Kanamori DO, Warrington NM, Kaakinen M, Kreiner-Møller E, Bradfield JP, Freathy RM, Geller F, Guxens M, Cousminer DL, Kerkhof M, Timpson NJ, Ikram MA, Beilun LJ, Bønnelykke K, Buxton JL, Charoen P, et al. 2012. Common variants at 12q15 and 12q24 are associated with infant head circumference. *Nature Genetics* **44**:532–538. DOI: <https://doi.org/10.1038/ng.2238>, PMID: 22504419
- Thurner M**, van de Bunt M, Torres JM, Mahajan A, Nylander V, Bennett AJ, Gaulton KJ, Barrett A, Burrows C, Bell CG, Lowe R, Beck S, Rakyen VK, Gloy AL, McCarthy MI. 2018. Integration of human pancreatic islet genomic data refines regulatory mechanisms at type 2 diabetes susceptibility loci. *eLife* **7**:e31977. DOI: <https://doi.org/10.7554/eLife.31977>, PMID: 29412141
- Tiyaboonchai A**, Cardenas-Diaz FL, Ying L, Maguire JA, Sim X, Jobaliya C, Gagne AL, Kishore S, Stanescu DE, Hughes N, De Leon DD, French DL, Gadue P. 2017. GATA6 plays an important role in the induction of human definitive endoderm, development of the pancreas, and functionality of pancreatic  $\beta$  Cells. *Stem Cell Reports* **8**:589–604. DOI: <https://doi.org/10.1016/j.stemcr.2016.12.026>, PMID: 28196690
- Trapnell C**, Williams BA, Pertea G, Mortazavi A, Kwan G, van Baren MJ, Salzberg SL, Wold BJ, Pachter L. 2010. Transcript assembly and quantification by RNA-Seq reveals unannotated transcripts and isoform switching during cell differentiation. *Nature Biotechnology* **28**:511–515. DOI: <https://doi.org/10.1038/nbt.1621>, PMID: 20436464
- Urakami T**. 2019. Maturity-onset diabetes of the young (MODY): current perspectives on diagnosis and treatment. *Diabetes, Metabolic Syndrome and Obesity : Targets and Therapy* **12**:1047–1056. DOI: <https://doi.org/10.2147/DMSO.S179793>, PMID: 31360071
- van der Valk RJ**, Kreiner-Møller E, Kooijman MN, Guxens M, Stergiakouli E, Sääf A, Bradfield JP, Geller F, Hayes MG, Cousminer DL, Körner A, Thiering E, Curtin JA, Myhre R, Huikari V, Joro R, Kerkhof M, Warrington NM, Pitkänen N, Ntalla I, et al. 2015. A novel common variant in DCST2 is associated with length in early life and height in adulthood. *Human Molecular Genetics* **24**:1155–1168. DOI: <https://doi.org/10.1093/hmg/ddu510>, PMID: 25281659
- Varelas X**, Samavarchi-Tehrani P, Narimatsu M, Weiss A, Cockburn K, Larsen BG, Rossant J, Wrana JL. 2010. The crumbs complex couples cell density sensing to Hippo-dependent control of the TGF- $\beta$ -SMAD pathway. *Developmental Cell* **19**:831–844. DOI: <https://doi.org/10.1016/j.devcel.2010.11.012>, PMID: 21145499
- Varshney A**, Scott LJ, Welch RP, Erdos MR, Chines PS, Narisu N, Albanus RD, Orchard P, Wolford BN, Kursawe R, Vadlamudi S, Cannon ME, Didion JP, Hensley J, Kirilusha A, Bonycastle LL, Taylor DL, Watanabe R, Mohlke KL, Boehnke M, et al. 2017. Genetic regulatory signatures underlying islet gene expression and type 2 diabetes. *PNAS* **114**:2301–2306. DOI: <https://doi.org/10.1073/pnas.1621192114>, PMID: 28193859



- Villar D**, Berthelot C, Aldridge S, Rayner TF, Lukk M, Pignatelli M, Park TJ, Deaville R, Erichsen JT, Jasinska AJ, Turner JM, Bertelsen MF, Murchison EP, Flicek P, Odom DT. 2015. Enhancer evolution across 20 mammalian species. *Cell* **160**:554–566. DOI: <https://doi.org/10.1016/j.cell.2015.01.006>, PMID: 25635462
- Wang A**, Yue F, Li Y, Xie R, Harper T, Patel NA, Muth K, Palmer J, Qiu Y, Wang J, Lam DK, Raum JC, Stoffers DA, Ren B, Sander M. 2015. Epigenetic priming of enhancers predicts developmental competence of hESC-derived endodermal lineage intermediates. *Cell Stem Cell* **16**:386–399. DOI: <https://doi.org/10.1016/j.stem.2015.02.013>, PMID: 25842977
- Watanabe K**, Nishimura Y, Oka T, Nomoto T, Kon T, Shintou T, Hirano M, Shimada Y, Umemoto N, Kuroyanagi J, Wang Z, Zhang Z, Nishimura N, Miyazaki T, Imamura T, Tanaka T. 2010. In vivo imaging of zebrafish retinal cells using fluorescent coumarin derivatives. *BMC Neuroscience* **11**:116. DOI: <https://doi.org/10.1186/1471-2202-11-116>, PMID: 20843315
- Westmoreland JJ**, Kilic G, Sartain C, Sirma S, Blain J, Rehg J, Harvey N, Sosa-Pineda B. 2012. Pancreas-specific deletion of Prox1 affects development and disrupts homeostasis of the exocrine pancreas. *Gastroenterology* **142**:999–1009. DOI: <https://doi.org/10.1053/j.gastro.2011.12.007>, PMID: 22178591
- Whyte WA**, Orlando DA, Hnisz D, Abraham BJ, Lin CY, Kagey MH, Rahl PB, Lee TI, Young RA. 2013. Master transcription factors and mediator establish super-enhancers at key cell identity genes. *Cell* **153**:307–319. DOI: <https://doi.org/10.1016/j.cell.2013.03.035>, PMID: 23582322
- Wood AR**, Jonsson A, Jackson AU, Wang N, van Leewen N, Palmer ND, Kobes S, Deelen J, Boquete-Vilarino L, Paananen J, Stančáková A, Boomsma DI, de Geus EJC, Eekhoff EMW, Fritsche A, Kramer M, Nijpels G, Simonis-Bik A, van Haeften TW, Mahajan A, et al. 2017. A Genome-Wide association study of IVGTT-Based measures of First-Phase insulin secretion refines the underlying physiology of type 2 diabetes variants. *Diabetes* **66**:2296–2309. DOI: <https://doi.org/10.2337/db16-1452>, PMID: 28490609
- Xie R**, Everett LJ, Lim HW, Patel NA, Schug J, Kroon E, Kelly OG, Wang A, D'Amour KA, Robins AJ, Won KJ, Kaestner KH, Sander M. 2013. Dynamic chromatin remodeling mediated by polycomb proteins orchestrates pancreatic differentiation of human embryonic stem cells. *Cell Stem Cell* **12**:224–237. DOI: <https://doi.org/10.1016/j.stem.2012.11.023>, PMID: 23318056
- Zhang Y**, Liu T, Meyer CA, Eeckhoute J, Johnson DS, Bernstein BE, Nusbaum C, Myers RM, Brown M, Li W, Liu XS. 2008. Model-based analysis of ChIP-Seq (MACS). *Genome Biology* **9**:R137. DOI: <https://doi.org/10.1186/gb-2008-9-9-r137>, PMID: 18798982
- Zhou Y**, Zhou B, Pache L, Chang M, Khodabakhshi AH, Tanaseichuk O, Benner C, Chanda SK. 2019. Metascape provides a biologist-oriented resource for the analysis of systems-level datasets. *Nature Communications* **10**:1523. DOI: <https://doi.org/10.1038/s41467-019-09234-6>, PMID: 30944313