

RESEARCH ARTICLE

Open Access

The bacteriophage WORiC is the active phage element in *wRi* of *Drosophila simulans* and represents a conserved class of WO phages

Jennifer A Biliske¹, Philip D Batista¹, Chantalle L Grant² and Harriet L Harris^{1,2*}

Abstract

Background: The alphaproteobacterium *Wolbachia pipientis*, the most common endosymbiont in eukaryotes, is found predominantly in insects including many *Drosophila* species. Although *Wolbachia* is primarily vertically transmitted, analysis of its genome provides evidence for frequent horizontal transfer, extensive recombination and numerous mobile genetic elements. The genome sequence of *Wolbachia* in *Drosophila simulans* Riverside (*wRi*) is available along with the integrated bacteriophages, enabling a detailed examination of phage genes and the role of these genes in the biology of *Wolbachia* and its host organisms. *Wolbachia* is widely known for its ability to modify the reproductive patterns of insects. One particular modification, cytoplasmic incompatibility, has previously been shown to be dependent on *Wolbachia* density and inversely related to the titer of lytic phage. The *wRi* genome has four phage regions, two WORiBs, one WORiA and one WORiC.

Results: In this study specific primers were designed to distinguish between these four prophage types in *wRi*, and quantitative PCR was used to measure the titer of bacteriophages in testes, ovaries, embryos and adult flies. In all tissues tested, WORiA and WORiB were not found to be present in excess of their integrated prophages; WORiC, however, was found to be present extrachromosomally. WORiC is undergoing extrachromosomal replication in *wRi*. The density of phage particles was found to be consistent in individual larvae in a laboratory population. The WORiC genome is organized in conserved blocks of genes and aligns most closely with other known lytic WO phages, WOVitA and WOCauB.

Conclusions: The results presented here suggest that WORiC is the lytic form of WO in *D. simulans*, is undergoing extrachromosomal replication in *wRi*, and belongs to a conserved family of phages in *Wolbachia*.

Background

Wolbachia pipientis is an obligate bacterial endosymbiont of insects with a wide distribution. It is a member of the order Rickettsiales and is closely related to the insect vectored mammalian pathogens *Anaplasma* and *Ehrlichia*. Ten supergroups of *Wolbachia* have been identified within the species *W. pipientis* [1]. Supergroups A and B are common insect symbionts which probably diverged from one another 50-60 MYA [2]. The rapid spread of *Wolbachia* through insect populations is enhanced by symbiont-driven modifications to normal host reproductive patterns which are manifested

as cytoplasmic incompatibility (CI), parthenogenesis, male killing and feminization (reviewed in [3]).

The possibility of genetically transforming fastidious obligate intracellular bacteria and targeting them to insect vectors of human disease has stimulated renewed interest in *Wolbachia's* bacteriophage WO. The *Wolbachia* of *Drosophila simulans*, *wRi*, has acquired four prophage elements that are integrated into the bacterial genome as 18- to 77-kb sequences, termed *wRi*-WO-A, *wRi*-WO-B (two identical copies) and *wRi*-WO-C [4]. In contrast *wMel*, found in *Drosophila melanogaster*, has one WO-A, one WO-B and a small pyocin-like element. All of these prophage elements are integrated into the *Wolbachia* chromosome at unique sites. Masui *et al* [5] were the first to demonstrate the existence of the prophage WO in *Wolbachia* of the cricket *Teleogryllus*

* Correspondence: hharris@ualberta.ca

¹Department of Biological Sciences University of Alberta CW 403 Biological Sciences Building Edmonton, Alberta T6G 2E9, Canada
Full list of author information is available at the end of the article

taiwanemma and later in *D. simulans* (*wCof*, *wRi*), the moths *Ephestia kuehniella* (*wCauB*, *wCauA*, *wKue*, *wSca*) and *Corcyra cepharonica* (*wCep*) [6] by electron microscopy and PCR. The WO prophages from *Wolbachia* infecting *D. simulans*, *D. melanogaster*, *Culex pipiens*, *T. taiwanemma*, *Nasonia vitripennis* and *E. kuehniella* have been sequenced [4,6-12]. WO phage genome sequences from *wRi*, *wMel*, and *wPip* are inferred from their respective bacterial chromosome genome sequencing projects. WOcauB2 and WOcauB3 are two strains of WO phages infecting *Wolbachia* of *E. kuehniella* that have been sequenced from the lytic phase [9]. WOcauB2 has a genome of 43,016 bp encoding 47 predicted open reading frames (ORFs), whereas WOcauB3 has a genome of 45,078 bp and 46 predicted ORFs. With respect to WO phages, little is known about their gene expression, lytic activity, or influence on the phenotypic properties of their hosts.

The nomenclature surrounding the WO phages from different *Wolbachia* strains varies. Originally, the phage found in *wKue* was tentatively named WO [5], irrespective of how many types of integrated prophages were present. When *wMel* was sequenced [10], the two prophage inserts were named WO-A and WO-B respective to the origin of replication. Two phage types in *wRi*, WO-A and WO-B, were named based on sequence homology to the *wMel* phages, with the addition of one more phage type, WO-C [4]. WOPip is present as five integrated copies in the *Wolbachia* of *C. pipiens* and these are designated WOPip1 through 5 [7]. They have been reported to be more closely related to WO-B of *wMel* than WO-A of *wMel* [7].

Bacteriophages are believed to be the mobile genetic elements responsible for the high level of genetic diversity in *Wolbachia* [[10,13] and [14]] through lateral transfer between co-infecting strains. As in other prokaryotes, prophage integration and transformation in *Wolbachia* appear to be major sources of lateral gene acquisition [15]. A group of genes present in the *wRi* and *wMel* prophage WO-B genome is most similar to genes found in *Rickettsia* [14], suggesting that interspecies horizontal transfer mediated by phages has also occurred in an insect harboring both bacteria.

Bacteriophages can influence the level of virulence of bacterial pathogens [16] and can change the phenotypic properties of closely related strains of bacteria. In *Wolbachia*-infected *Drosophila*, *Culex*, *Nasonia* and other insects, WO prophages appear to be temperate, that is, they have an integrated prophage form and can also generate virions which result in bacterial lysis [6,11,15,17] and [18]. In the parasitoid wasp, *N. vitripennis*, Bordenstein *et al* used a quantitative PCR assay to demonstrate that *Wolbachia* titer, which correlates with CI intensity, is inversely related to copy number of

temperate WOVitA [15]. This relationship, known as the Phage Density Model, predicts that low CI strains of *Wolbachia* will have a high number of phage particles, and, conversely, high CI strains of *Wolbachia* will have low titers of phage particles [15,19]. In *Drosophila*, however, it is not known which of the diverse prophage elements give rise to lytic viruses, how their lytic properties are regulated, or the effect of lysis on host phenotype. Although most tailed bacteriophages have evolved a temperate lifestyle, it is not yet known if the prophage elements in *wRi* are functional, defective, satellite phages, or agents of gene transfer [20]. Typically, mature WO phage particles are detected using primers specific to the open reading frame encoding a putative minor capsid protein C (ORF7) [5]. In *wRi* of *D. simulans*, however, ORF7 is present in all four prophage insertions [WRi_005560], [WRi_007170], [WRi_010220], and [WRi_012630] and so the presence of ORF7 is not a specific indicator of which phage is active.

In this paper we measure the relative copy number of mature, active WORiC phage particles in whole flies and tissues of *D. simulans* and determine variations in *Wolbachia* and WO copy number between individual larval hosts by quantitative PCR. A comparison of the genome architecture of known active phages WOVitA1 and WOcauB2 to WORiC identifies modules for head assembly and DNA packaging as well as tail morphogenesis that are conserved in all known active WO phages.

Methods

Strains and media

D. simulans (Riverside) (DSR) stocks were maintained at room temperature on a standard diet of cornmeal, dextrose and yeast. Stocks were stably infected with a single *Wolbachia* strain (*wRi*) and have been maintained at the University of Alberta laboratory for approximately 6 years. The presence of *Wolbachia* was confirmed at regular intervals using 81F and 691R *wsp* primer pairs [21].

DNA extractions

DNA from whole flies and gonads was extracted from animals that were less than 5 days post eclosion. Newly eclosed flies were separated by sex and allowed to develop to the appropriate age. Gonad DNA samples were obtained from 4 groups of 100-150 testes each and 4 groups of 75-150 ovaries each. Whole fly DNA was taken from 4 groups of 15 flies each. Three groups of 15-minute AEL (after-egg-laying) embryos were obtained by allowing females to oviposit on egg laying dishes made from fruit juice. Embryos were collected and chilled every 15 minutes until approximately 200 μ l of packed embryos were obtained per replicate. The

eggs were stored at -80C until DNA extractions could be performed.

Synchronization of larvae was accomplished by allowing several hundred females to oviposit on egg-laying dishes for one hour. The eggs were collected and seeded onto standard media. From these, third instar (3') larvae were collected and stored at -80C until DNA extraction.

DNA was extracted from all tissues and flies with the DNeasy Blood and Tissue Kit (Qiagen) using the manufacturer's protocol with an extended, overnight proteinase K digestion. DNA purity and concentration was determined using a Nanodrop ND1000.

Quantitative PCR for relative copy number

Relative copy numbers of *Wolbachia* and WO phage in *D. simulans* were obtained using the MiniOpticon System (Bio-Rad). The relative *Wolbachia* infection level was measured by comparing the copy number of the gene for *Wolbachia* surface protein, *wsp*, to a single copy gene in the *Drosophila* genome, CuZn superoxide dismutase (*sod*). Phage copy numbers were measured by comparing the adenine methyltransferase (*wMTase*) (WORiB), *lysozyme* (WORiA), and *tail tube protein* (WORiC) genes to *wsp* in *wRi* (see table 1 for locus tags and primer sequences).

Reactions were performed in low profile 48-well white plates with flat cap strips (Bio-Rad). Ten microliter reactions included 400nM of each forward and reverse primer, 5 µl of 2× Dynamite qPCR mastermix (Molecular Biology Service Unit - University of Alberta) which included SYBR green (Molecular Probes) and Platinum Taq (Invitrogen), and 125ng of DNA. The thermal cycling conditions were 95°C for 2 minutes, 40 cycles of 95°C, 55°C, and 72°C for 30 seconds each, and a final 2 minute 72°C extension. Fluorescent data were acquired after every 72°C extension. A 60-95°C melting curve was performed to confirm the specificity of the products. No template controls were included to account for DNA contamination. All samples were analyzed in technical

and biological triplicates. Standard curves were constructed through a dilution series to validate the primer pairs; all primers were found to have efficiencies that were roughly equal, using the equation $E = 10^{(-1/\text{slope})} - 1$, and suitable for relative comparisons, and r^2 values >0.99. The primer sequences were designed using Perl-Primer v1.1.14 [<http://perlprimer.sourceforge.net>] and are described in table 1. All primers were synthesized by Integrated DNA Technologies and were purified by standard desalting. PCR products were sequenced to confirm specificity of the primers and all amplified a single, specific target. Data were analyzed by the Opticon Monitor 3 software (Bio-Rad) which uses the ΔCT method. The average copy number of integrated phage was compared to the expected number based on published sequence data and the difference was statistically analyzed with a two-tailed t-test. The correlation tests between the three WO phages and *wRi* were performed using the Pearson Product Moment Correlation test. When determining the relative copy number for each of the phage types, it was assumed that integrated prophage sequences would amplify with the same efficiency as sequences from mature virus particles.

Sequence analysis

Annotated genomes of *Wolbachia* strains *wMel* [GenBank:NC_002978] [10] and *wRi* [GenBank:NC_012416] [4], and phage strains WOCauB2 [GenBank:AB478515] [9], and WOVitA [GenBank:HQ906662] [12] were retrieved [22]. The phage regions [WRi_005250-005970] (WORiB) and [WRi_006570-WRi_007250] (WORiC) from the *wRi* genome were used for whole phage genome alignments. The region [WD0562-WD0646] from the *wMel* genome was used for WOMelB genome alignments. Whole genome comparisons were performed using the Mauve plug-in v.2.2.0 [20] for Geneious v5.4.4 [23]. The predicted amino acid sequences for the large terminase subunit and baseplate assembly gene W were used for phylogenetic analysis.

Table 1 Primer sequences used in this study

ORF Product	Locus Tag	Specificity	Sequence (5'-3')
Superoxide Dismutase (SOD)	Dsim GD12822	<i>D. simulans</i>	F - GTCGACGAGAATCGTCACCT R - GGAGTCGGTGATGTTGACCT
Surface Antigen Wsp (Wsp)	WRi 010990	<i>Wolbachia wRi</i>	F - ATCAGGGTTGATGTTGAAGG R - CAGTATCTGGGTTAAATGCTG
Lysozyme M1 (Lyz)	WRi 012650	WORiA	F - GACTTTATGGCAGTATACCGA R - TGTTCCGTTGAATTTGTTC
DNA Methyltransferase (MTase)	WRi 005640	WORiB	F - CTAAATGACCATCAACCACAG R - GCTTCAATCAGGGAATTTGG
Contractile Tail Tube Protein	WRi 006970	WORiC	F - GTTGATGGTAGAGGTTATGCGA R - GAATATCCATACCACCAGCTC

Proteins were aligned using the ClustalW multiple alignment algorithm implemented in Geneious v5.4.4. [23]. Model selection was performed using Prottest 2.4 [24] with Akaike's information criterion (AIC) used to select for an appropriate evolutionary model for each data set [terminase (JTT+I+Γ+F) and baseplate assembly protein W (JTT+Γ)] prior to analysis. The evolutionary history was inferred for both genes using the maximum likelihood method. Phylogenetic trees generated by PHYML used 1000 bootstrap replicated datasets and estimated gamma distribution and proportion of invariable sites [25].

Results

Presence and activity of WO prophages in *Wolbachia* of *D. simulans*

When lytic viruses replicate and lyse host cells, they do so through an enzymatic process involving a two component cell lysis system of a holin and lysozyme [26]. To date, there is no direct evidence that the WO phages of *wRi* are capable of enzymatic lysis of bacterial hosts. Therefore, the term "lytic" is not used here to describe phage or phage DNA detected in excess of the integrated prophage genomes. Instead, replicating WO is referred to as a mature, extrachromosomal, or active phage. WO phages in *wMel* and *wRi* have been classically referred to as WO-A, WO-B, and WO-C [4,10]. However, the less ambiguous nomenclature WORiA, WORiB, and WORiC respectively is used here to describe the prophage types in *wRi* and WOMelA and WOMelB for prophage types in *wMel*.

Quantitative PCR was used to test whether *Wolbachia* prophages were replicating extrachromosomally. Specific primers that differentiate between the prophage types in *wRi* were designed (table 1) and *Wolbachia* titer was determined by comparing the *wsp* gene copy number to the *Drosophila* nuclear *sod* gene. Integrated and extrachromosomal viral copy numbers were determined using primers specific to *Wolbachia* genes *lysozyme* (WORiA), *MTase* (WORiB), and *tail tube protein* (WORiC). The amplification of the WO-specific primers was compared to *Wolbachia* copy number using *wsp* (*wRi*-specific primers). Values reported are the combination of integrated plus extrachromosomal phages.

WORiA is found once in the *wRi* genome. The relative copy number of the ORF which encodes a putative *lysozyme* [WRi_012650] was measured in young males and females (three replicates of 15 flies each), testes and ovaries, and 15 minute AEL embryos. The relative lysozyme (WORiA) copy number in these tissues ranged from 0.94 - 1.16 per *Wolbachia* cell (figure 1A). This is consistent with the single integrated copy in the genome and indicates no extrachromosomal WORiA (all *p* values > 0.05; two-tailed *t*-test).

In *wRi*, there are two integrated copies of the WORiB prophage and each contains one copy of the *MTase* gene [WRi_005640; WRi_010300] [4]. In DSR males, females, testes, ovaries, and two-hour embryos, the relative *MTase* copy number ranged from 1.83-2.10 and was not significantly different than two per *Wolbachia* genome (all *p* values > 0.05, two-tailed *t*-test) (figure 1B). There is no evidence of extrachromosomal WORiB phage genomes.

The gene encoding the phage tail tube protein is present once in the *wRi* genome on the WORiC insert. In males, females, testes, ovaries, and 15 minute AEL embryos, the relative tail tube protein copy number was significantly greater than the expected one copy per *Wolbachia* genome (*p* < 0.05 in all cases, two-tailed *t*-test) (figure 1C). Therefore, WORiC is the extrachromosomal phage in *wRi*. The average density of all samples tested ranged from 1.29 - 1.61 copies of WORiC per *wsp* copy.

Occasionally, a DNA sample showed no evidence of extra-chromosomal WORiC DNA (data not shown). This indicates that DNA extracted from groups of flies may mask variation with respect to the amount of replicating phage per individual. Thus, third instar larvae were synchronized to a 1 hour age difference and *wRi*, WORiA, WORiB, and WORiC numbers were measured for each individual to determine whether the WO copy number varied between individuals (figure 2). Relative phage densities were also compared to *Wolbachia* densities to determine whether variations in phage copy numbers were related to the bacterial density as observed by Bordenstein *et al* [15] in *N. vitripennis*. Among 16 third instar larvae tested, the *Wolbachia* densities ranged from 6.67 to 19.21 copies per host *sod* gene, with the exception of one outlier at 34.88. WORiA relative numbers averaged 0.97 and varied from 0.86 to 1.13 copies per *Wolbachia*. WORiB densities for the larvae averaged 2.02 copies per *wRi* and ranged between 1.56 and 2.78. Finally, WORiC copy numbers averaged 1.17 and ranged between 0.91 and 1.50 per *wsp*. None of the densities of the three phage types correlated significantly with the *Wolbachia* density (Pearson correlation; *p* = 0.256, 0.12, and 0.16 for WORiA, WORiB, and WORiC, respectively) among the 16 samples tested. Removing the outlier individual (34.88 *Wolbachia* per host cell) from the analyses did not change the statistical outcome of the correlation test in WORiC (Pearson correlation; *p* > 0.7).

Comparative genomics and phylogenetic analysis

The genome of the WORiC prophage is predicted to be 77,261 bp containing 56 ORFs [WRi_006570 to WRi_007250]. The core genome containing a DNA packaging and head assembly module and a tail

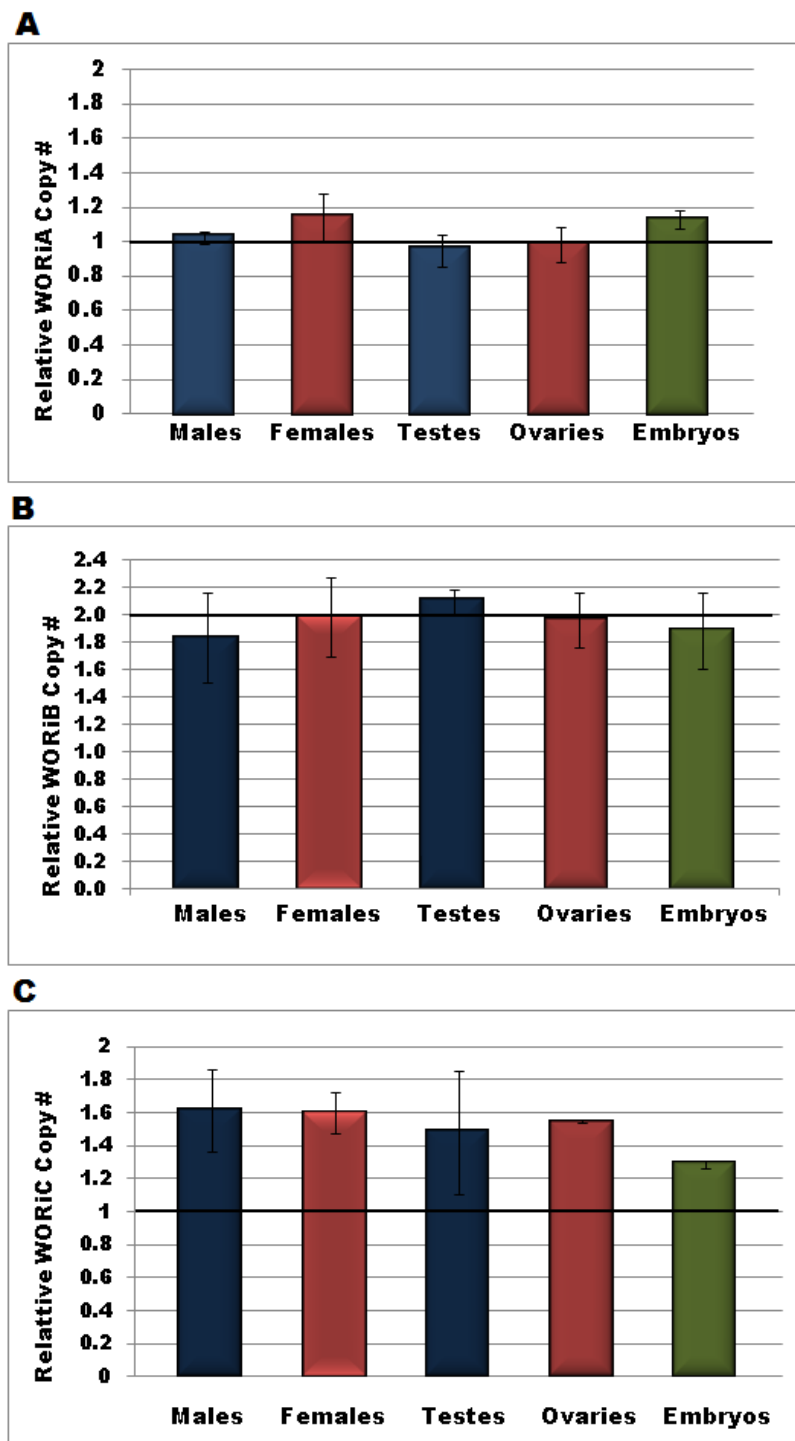


Figure 1 Relative copy number of WO in males, females, testes, ovaries, and early embryos. Relative copy number of ORFs encoding genes for lysozyme, MTase, and tail tube protein were measured by qPCR to determine the amount of extrachromosomal WORiA, WORiB, and WORiC, respectively in males, females, testes, ovaries, and embryos. The black line depicts the expected copy number for each of the phage types; one for A and C, and two for B. Of the three phage types, only WORiC is present in any extrachromosomal copies ($p < 0.05$). Error bars represent one standard deviation.

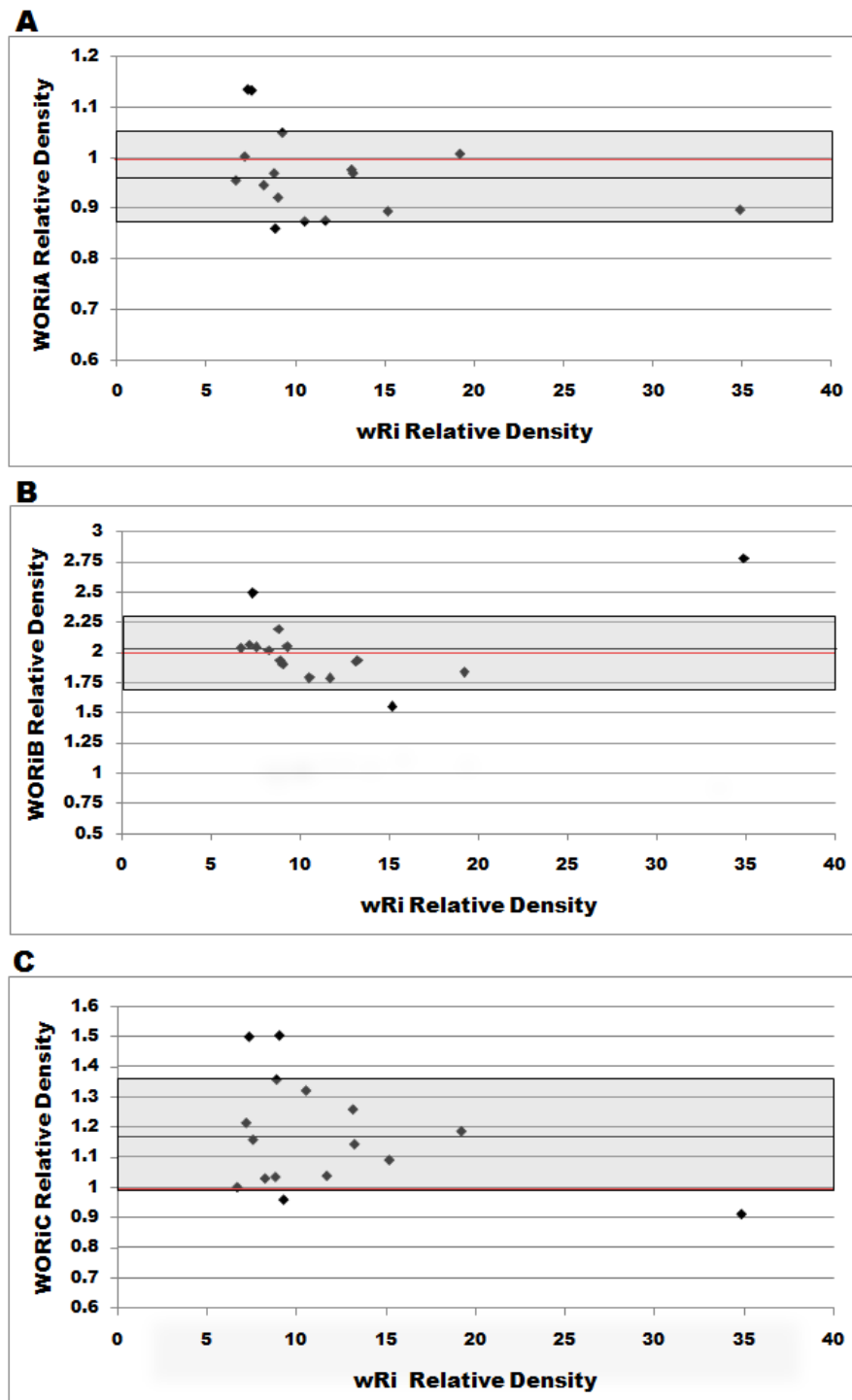


Figure 2 Relative copy number of WO in 1hour synchronized 3' larvae individuals. The relative copy numbers of each phage type are plotted against the relative density of *Wolbachia* in individual one hour synchronized third instar larvae. Each point on the graph represents one larva and the same 16 larvae were used to measure each of WORiA, WORiB, and WORiC. The shaded area represents one standard deviation of the combined 16 WO densities (0.085, 0.286, and 0.181, respectively) and the red line indicates the expected integrated copy number based on the published wRi genome sequence. The relative densities of wRi and each of the WO phages did not show any significant correlation (Pearson; $p > 0.05$)

Table 2 the conserved core tail morphogenesis and DNA packaging and head assembly regions of WORiC

Locus Tag	Open Reading Frame	Region	
WRi_006910	tail protein D, putative CDS	Tail Morphogenesis	
WRi_006920	tail protein X, putative CDS		
WRi_006930	tail protein U, putative CDS		
WRi_006940	tail tape measure protein CDS		
WRi_006950	hypothetical protein CDS		
WRi_006960	hypothetical protein CDS		
WRi_006970	contractile tail tube protein CDS		
WRi_006930	tail protein U, putative CDS		
WRi_006940	tail tape measure protein CDS		
WRi_006950	hypothetical protein CDS		
WRi_006960	hypothetical protein CDS		
WRi_006970	contractile tail tube protein CDS		
WRi_006980	phage tail sheath protein CDS		
WRi_006990	hypothetical protein CDS		
WRi_007000	hypothetical protein CDS		
WRi_007010	hypothetical protein CDS		
WRi_007020	VrlC.2 CDS		
WRi_07030(a)	VrlC.1 CDS		
WRi_007040	transposase, IS5 family CDS		
WRi_07030(b)	VrlC.1 CDS		
WRi_007060	hypothetical protein CDS		
WRi_007070	Tail protein I, putative CDS		
WRi_007080	baseplate assembly protein J, putative CDS		
WRi_007090	baseplate assembly protein W, putative CDS		
WRi_007100	hypothetical protein CDS		
WRi_007110	baseplate assembly protein V CDS		
WRi_007120	hypothetical protein CDS		
WRi_007130	minor tail protein Z, putative CDS		DNA packaging and head assembly
WRi_007140	hypothetical protein CDS		
WRi_007150	hypothetical protein CDS		
WRi_007160	hypothetical protein CDS		
WRi_007170	minor capsid protein C, putative CDS		
WRi_007180	portal protein, lambda family CDS		
WRi_007190	phage uncharacterized protein CDS		
WRi_007200	hypothetical protein CDS		
WRi_007210	terminase large subunit, putative CDS		

morphogenesis module is shown in table 2 and is 24.2 kbp [WRi_006910 to WRi_007210]. The 35% GC content is identical to the GC content of the *wRi* genome indicating a long period of co-evolution between prophage and bacteria.

The only confirmed WO mature virus particles that have been sequenced belong to *Wolbachia* of *Cadra cautella*, WOCauB2 and WOCauB3 [9,12]. More recently, Kent et al [12] used microarrays to capture the sequences of WOVitA and WOVitB which are the

active phages in *wVitA* and *wVitB* respectively, infecting *N. vitripennis*. In this study, genomes from active phages were compared to WORiC phage genomes to determine whether conserved regions are present in all active phages. Figure 3 shows the overall gene synteny between the WO phages. The heights of the colored peaks represent the degree of nucleotide similarity between collinear genomes. Pairwise alignments were performed between WORiC and WOCauB2 (figure 3a), WORiC and WOVitA1 (figure 3b), WORiC and WORiB (figure

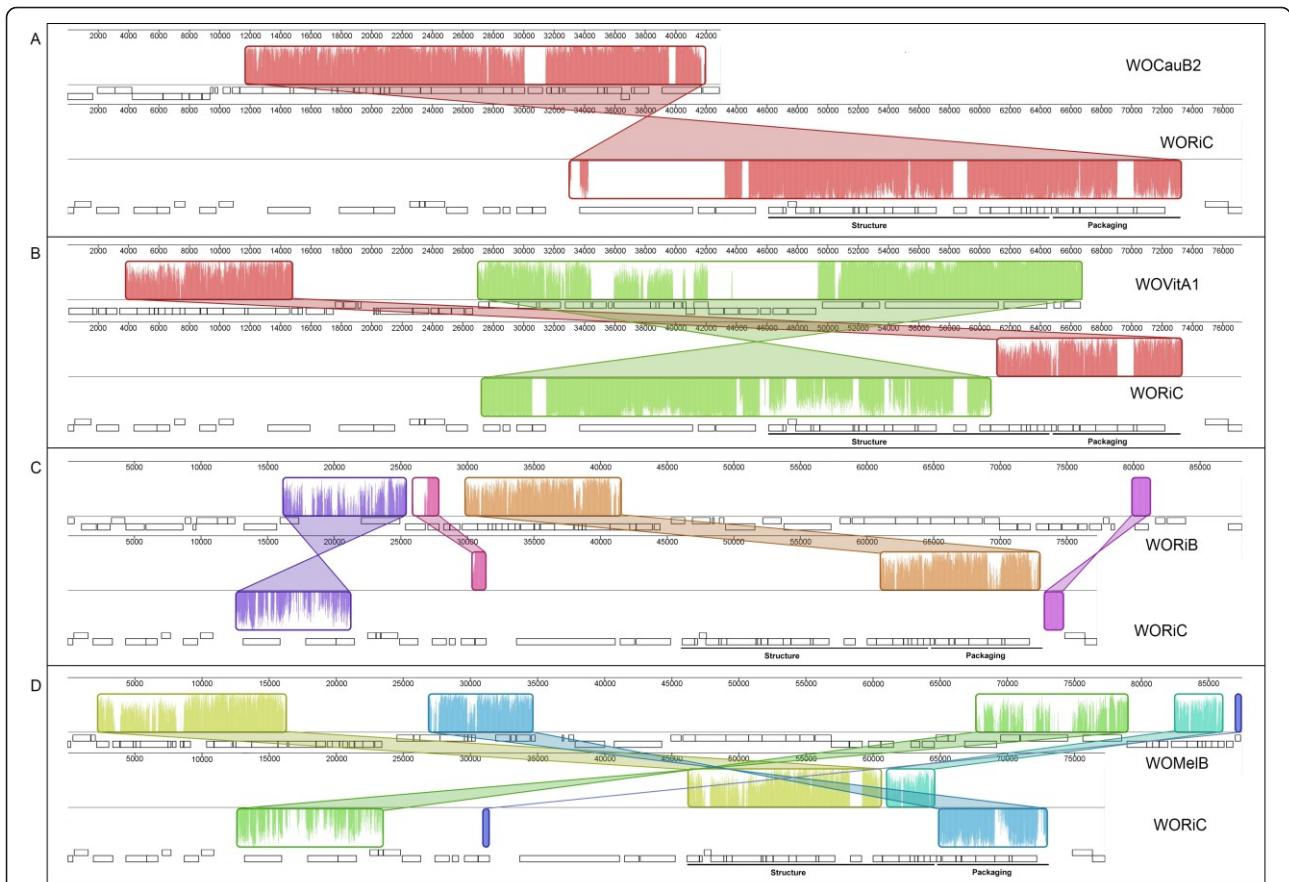


Figure 3 Whole genome comparisons between WORiC, WOCauB2, WOVitA1, WOMeIB, and WORiB. Genomes of WORiC to A) WOCauB2 B) WOVitA1 C) WOMeIB and D) WORiB are compared. Degree of sequence similarity is represented by the color intensity within each block. Areas of white within blocks indicate dissimilarity including gene insertions or deletions (see text). Each colored block represents a conserved region of homologous sequence between genomes. The placement of a block below the center axis indicates inverted regions.

3c) and WOMeIB (figure 3d). Detailed lists of ORF alignments are included in the Additional file 1, Table S1, Additional file 2, Table S2, Additional file 3, Table S3, Additional file 4, Table S4, respectively. The WOMeIB sequence used for comparisons included the upstream adjacent pyocin region identified by Wu *et al* [10]. These comparisons revealed conserved regions of homologous sequence and identified rearrangements and inversions between the genomes. The genes encoding putative structural and packaging proteins are present in two adjacent and conserved regions in WORiC, WOVitA1 and WOCauB2. WORiA and WOMeIA did not align with other WO phage genomes (data not shown).

Comparisons between WORiC and WOCauB2 reveal a single block of homologous sequences spanning the structural and packaging regions (figure 3a). There are three separate areas of dissimilarity between WORiC and WOCauB2. These include two transposable

elements and an uncharacterized phage protein [WRi_007190].

Notable areas of dissimilarity between WOVitA1 and WORiC (white areas; figure 3b) include two transposable elements [WRi_006820] interrupting an ankyrin repeat protein gene [WRi_006810, WRi_p06840]. Genome alignments were also used to assign possible functions to previously annotated hypothetical ORFs. A hypothetical gene, [WRi_p07030], shares 74.7% pairwise identity to the virulence protein gene VrlC.1 of WOVitA1 and is pseudonized by the transposon insertion [WRi_007040]. The annotated hypothetical protein [WRi_007070] is homologous to tail protein I from WOVitA1 (96%, 3e-143). The major region of dissimilarity between WOVitA1 and WORiC could be a result of horizontal gene transfer into WOVitA1 or gene loss in WORiC. These ORFs in WOVitA1 encode MutL and three transcriptional regulators [ADW80184.1, ADW80182.1 to ADW80179.1]. Although WOVitA1

TEM and ORF7-specific PCR to show that mature phage particles form in *Wolbachia*-infected tissues in both *D. simulans* and *D. melanogaster*, but the specific identity of these virus particles and the regulation of their induction was not addressed.

In this study, the activity of the three distinct prophages found in *wRi* infecting *D. simulans* was measured using quantitative PCR. Phage type-specific primers were used to determine how many copies of the phage genomes were present in addition to the integrated forms. The only phage chromosome to appear in excess of the integrated copy number was WORiC. The average number of copies of WORiC in all tissues tested ranged from 1.29 - 1.61 copies per *Wolbachia*, consistently above the one copy integrated into the *wRi* genome. Thus, WORiC appears to be the only actively replicating phage in *D. simulans*.

wRi is considered to be a high CI strain of *Wolbachia* in *D. simulans*; embryonic lethality resulting from crosses between infected males and uninfected females is typically between 90 - 100% [28,29]. In *N. vitripennis* infected with *wVitB*, which is also a high CI-inducing strain of *Wolbachia*, Bordenstein *et al* [15] reported an average WOVitB copy number of 1.6 ± 0.12 per *Wolbachia*. In the present study, a similar relative density of WORiC suggests that this phage is the active virus observed in past TEM micrographs of *Drosophila* tissues [5,17]. WORiC genes have been reported as actively transcribed in previous literature. Specifically, the ankyrin related genes in WORiC are expressed in males, females, ovaries, testes, early (2 hour AEL) and late (overnight) embryos [4].

WORiB and WORiA are non-functional phage remnants

WORiA and WORiB did not show any evidence of extrachromosomal DNA beyond the one and two copies, respectively, found within the *wRi* genome. Alignments to WOCauB and WOVitA1 show that both WORiA and WORiB lack the core structural components necessary for virion assembly. The persistence of WORiA and WORiB within the *wRi* genome suggests that there may be selective pressures maintaining these two prophages. There is evidence that WORiB is actively transcribing at least one ORF located within the prophage genome [30] and so this region may be necessary for another, unrelated, aspect of *Wolbachia* biology.

Phage density remains consistent among time-synchronized cohorts and does not correlate with *Wolbachia* density in larvae

The average density of WORiC was derived from pooled samples of multiple individuals and tissues. When 16 third instar larvae were individually measured for phage density, WORiA and WORiB did not significantly

deviate from the expected means of one and two copies, respectively. Individual larva, however, had a much wider distribution of WORiC copy numbers, ranging from individuals that appeared to have no extrachromosomal viruses to individuals having more than 1.5 WORiC per *Wolbachia*. This indicates that not every individual within the larval population is experiencing viral replication, although most are. Currently, the signals which induce viral replication within the confines of an endosymbiotic bacterium are unknown.

Along with the WO density in individual third instar larvae, the relative *Wolbachia wRi* density per *D. simulans* host cell was also measured. The *wRi* density did not significantly correlate with WORiA, WORiB, or WORiC relative densities. However, the WORiC density trends toward a slight inverse association with *wRi* density. It is possible that with a larger sample population, more statistical significance would emerge. This lack of correlation does not refute the phage density model postulated by Bordenstein *et al* [15], whereby the *Wolbachia* copy number and CI in *N. vitripennis* was found to be inversely related to phage activity. Rather, it raises the notion that phage density is a population and strain-specific factor. Low levels of replicating phage, as seen here for WORiC, may not significantly impact *Wolbachia wRi* density and the strength of CI in *Drosophila*. The effect of phage copy number on CI level in *D. simulans* has yet to be examined.

Comparative Genomics and phylogenetics of *Wolbachia* bacteriophages

Since WORiC in this study was the only *wRi* prophage capable of extrachromosomal replication, a comparative genomic approach was taken to identify the core genome conserved between WORiC and two known temperate bacteriophages WOVitA1 and WOCauB2. This approach identified essential regions required for phage generation. The genomes of WORiC, WOVitA1, and WOCauB2 show considerable sequence homology which supports the view that WORiC is the active form of phage in *wRi*. In contrast, the WORiB genome and the WOMelB genome lacking the upstream pyocin region share few homologous sequences with WORiC. Genes with sequence homology in WORiB, WOMelB, and WORiC belong to the DNA packaging and head assembly region. However, the core structural/tail region of WORiC aligns with WOMelB once the pyocin region is included in the analysis. WORiB lacks the pyocin-like region and is therefore deficient in most tail morphogenesis genes.

The chimeric nature of WO phages was initially described by Masui *et al* [6], who identified the large terminase subunit, portal protein and minor capsid protein of the packaging region in WOKue as lambda-like,

and the baseplate assembly proteins of the structural region as P2-like. This hybridization of lambda and P2 sequences is not exclusive to WO phages, since chimeric phages have been described in other systems; for example *Xylella fastidiosa* phages XfP1 and XfP2 are also lambda/P2 chimeras [16]. Due to recombination and genetic mosaicism, different parts of a bacteriophage genome can have different evolutionary histories [31]. In the chimeric WO phages (figure 4), the large terminase subunit sequence from the DNA packaging and head assembly regions shows a different phylogenetic relationship than the baseplate assembly protein W sequence from the tail morphogenesis regions. This modular nature of WO phages has been described previously [19].

The two conserved modules shared by WORiC and the temperate phages WOCauB2 and WOVitA1 include the DNA packaging and head assembly region and the tail morphogenesis region. The genome encoding the DNA packaging and head assembly module includes ORFs that putatively code for a portal protein, a minor capsid protein and the large subunit of the terminase protein. This large terminase subunit contains a DNA-dependent ATPase domain and site-specific nuclease domain which are both involved in DNA translocation during packaging. In double stranded DNA phages, terminases are generally accompanied by a small subunit involved in DNA binding [32,33]. However, no homolog of this small subunit has been identified in any WO genome. The portal protein of tailed bacteriophages forms a complex with the terminase proteins which translocates phage DNA into the prohead during phage replication [33]. The conservation of these packaging genes suggests that DNA packaging in WO phages is driven by an ATP-dependent DNA translocation motor similar to other tailed bacteriophages.

Similarly, the organization of the tail morphogenesis module is conserved among WOVitA, WOCauB, and WORiC. Genes involved in tail assembly include the tail proteins, tail tape measure protein, the tail sheath protein, the contractile tail tube protein and baseplate assembly proteins J, W, and V. Tail morphogenesis in the subfamily Myoviridae, which have long contractile tails, is the most complex of all tailed bacteriophages. In the Myoviridae T4, P2 or Mu, baseplate assembly occurs first and is required for sheath and tail polymerization. It is from the baseplate that the tube polymerizes to a length determined by the tail-tape measure protein and this is followed by the tail sheath which extends the length of the tail [34].

The presence of the tail sheath gene in active WO genomes suggests that, with respect to tail structure and assembly, these phages are more similar to Myoviridae than to the subfamily Siphoviridae, which

includes lambda and lacks contractile tails. The phage tail mediates genome delivery into host cells, and is required for the generation of infectious phages. The absence of this region in the WORiB genome may contribute to the inability of WORiB to form infectious particles.

Unlike WORiC, where the packaging region is located adjacent to the structural proteins, in WOMelB the structural proteins are divided in the genome and separated from the packaging region by approximately 18kbp [35]. One region of structural genes found in WOMelB was initially characterized as a pyocin-like region. Therefore, active phage generation in *D. melanogaster* wMel could result from the coordinate replication of both packaging and structural regions. Despite much previous interest in *Wolbachia*'s ankyrin containing genes [35,36], and the suggestion that they may influence phage function, the ORFs encoding ankyrin-containing motifs are outside the core conserved regions of WORiC, WOVitA1 and WOCauB3. The role of ankyrin coding genes in the WO-*Wolbachia*-host relationship remains elusive [37,38].

Our results suggest that *Wolbachia* phages WORiC and known active phages WOCauB and WOVitA1 represent a conserved class of *Wolbachia* phages. Interest in the conserved genetic modules of the lambda-like DNA packaging and head assembly genes and P2-like tail morphogenesis genes led to the investigation of the relatedness of the *Wolbachia* phages. Phylogenetic analysis shows similarity between WORiC and WO-B's found in wMel and wRi (based on large terminase subunit phylogeny) and similarity between WORiC and WOCauB2 and WOCauB3 (based on the baseplate assembly protein W phylogeny). These divergent topologies are indicative of the horizontal transfer events occurring between phage genomes. Similarity of genomes of active WO phages may be due to the fact that they have a common, recent origin, or because active WO phages are operating within a limited framework of endosymbiotic bacteria, where opportunities for incorporating novel gene sequences by recombination are limited. Given the present level of knowledge of active WO bacteriophages, we cannot distinguish between these and other possible evolutionary scenarios.

Conclusions

The genome of WORiC shares two main regions of similarity to WO phages infecting wCau and wVit. These two regions encode DNA packaging and head assembly proteins and tail morphogenesis and structural proteins. The conserved structural and packaging regions appear to be necessary for generation of mature virus particles; all active WO phages characterized to date contain these homologous components.

The obligate intracellular nature of *Wolbachia* makes detailed examination of WO and its temperate lifestyle a challenge. Here, a phage-specific quantitative PCR approach was employed to determine that WORiC is the active prophage element in *w*Ri. On an organismal and tissue-specific level, WORiC is present in very low densities; this low density is expected in *w*Ri's high CI environment and is consistent with the phage density model developed in *Nasonia* [15]. On an individual basis, however, no correlation was found between *w*Ri and WO phage density in synchronized third instar larvae. This study provides an integrated computational and molecular approach to investigate the complex biology of the host insect, *Wolbachia* endosymbiont, and WO bacteriophage.

Additional material

Additional file 1: ORFs included in the whole genome alignment of WORiC and WOCauB2. Highlighted regions match colours indicated in Figure 3a and represent regions of sequence similarity.

Additional file 2: ORFs included in the whole genome alignment of WORiC and WOVitA1. Highlighted regions match colours indicated in Figure 3b and represent regions of sequence similarity.

Additional file 3: ORFs included in the whole genome alignment of WORiC and WORiB. Highlighted regions match colours indicated in Figure 3c and represent regions of sequence similarity.

Additional file 4: ORFs included in the whole genome alignment of WORiC and WOMeLB. Highlighted regions match colours indicated in Figure 3d and represent regions of sequence similarity.

Acknowledgements and Funding

This work was funded by the Natural Sciences and Engineering Research Council of Canada (NSERC). We are grateful for the suggestions and comments provided by Peter Harris and the two anonymous reviewers which improved the manuscript.

Author details

¹Department of Biological Sciences University of Alberta CW 403 Biological Sciences Building Edmonton, Alberta T6G 2E9, Canada. ²Department of Biology and Environmental Science Concordia University College of Alberta 7128 Ada Boulevard Edmonton, Alberta T5B 4E4, Canada.

Authors' contributions

JAB and CLG performed the qPCR experiments, PDB carried out the alignments and *in silico* analysis, JAB, PDB, and HLH conceived all experiments and analyzed the data and all authors wrote the manuscript. All authors have read and approved the final manuscript.

Received: 12 July 2011 Accepted: 15 November 2011

Published: 15 November 2011

References

- Lo N, Casiraghi M, Salati E, Bazzochi C, Bandi C: **How many *Wolbachia* supergroups exist?** *Molecular Biology and Evolution* 2002, **19**:341-346.
- Werren JH, Zhang W, Guo LR: **Evolution and phylogeny of *Wolbachia*: Reproductive parasites of arthropods.** *Proceedings of the Royal Society B* 1995, **261**:53-63.
- Stouthamer R, Breeuwer J, Hurst G: ***Wolbachia pipientis*: microbial manipulator of arthropod reproduction.** *Annual Review of Microbiology* 1999, **53**:71-102.
- Klasson L, Westberg J, Sapountzis P, Naslund K, Lutnaes Y, Darby AC, Veneti Z, Chen L, Braig HR, Garrett R, et al: **The mosaic genome structure of the *Wolbachia w*Ri strain infecting *Drosophila simulans*.** *Proceedings of the National Academy of Sciences USA* 2009, **106**(14):5725-5730.
- Masui S, Sasaki T, Ishikawa H: **Genes for the type IV secretion system in an intracellular symbiont, *Wolbachia*, a causative agent of various sexual alterations in arthropods.** *Journal of Bacteriology* 2000, **182**(22):6529-6531.
- Masui S, Kuroiwa H, Sasaki T, Inui M, Kuroiwa T, Ishikawa H: **Bacteriophage WO and virus-like particles in *Wolbachia*, an endosymbiont of arthropods.** *Biochemical and Biophysical Research Communications* 2001, **283**(5):1099-1104.
- Klasson L, Walker T, Sebahia M, Sanders MJ, Quail MA, Lord A, Sanders S, Earl J, O'Neill SL, Thomson N, et al: **Genome evolution of *Wolbachia* strain *w*Pip from the *Culex pipiens* group.** *Molecular Biology and Evolution* 2008, **25**(9):1877-1887.
- Salzberg SL, Puiu D, Summer DD, Nene V, Lee NH: **Genome sequence of the *Wolbachia* endosymbiont of *Culex quinquefasciatus* JHB.** *Journal of Bacteriology* 2009, **191**(5):1725.
- Tanaka K, Furukawa S, Nikoh N, Sasaki T, Fukatsu T: **Complete WO phage sequences revealed their dynamic evolutionary trajectories and putative functional elements required for integration into *Wolbachia* genome.** *Applied and Environmental Microbiology* 2009, **75**(17):5676-5686.
- Wu M, Sun LV, Vamatheven J, Riegler M, Deboy R, Brownlie JC, McGraw EA, Martin W, Esser C, Ahmadinejad N, et al: **Phylogenomics of the reproductive parasite *Wolbachia pipientis w*Mel: A streamlined genome overrun by mobile genetic elements.** *PLoS Biology* 2004, **2**(3):0327.
- Fujii Y, Kubo T, Ishikawa H, Sasaki T: **Isolation and characterization of the bacteriophage WO from *Wolbachia*, an arthropod endosymbiont.** *Biochemical and Biophysical Research Communications* 2004, **317**:1183-1188.
- Kent B, Salichos L, Gibbons J, Rokas A, Newton I, Clark M, Bordenstein SR: **Complete bacteriophage transfer in a bacterial endosymbiont (*Wolbachia*) determined by targeted genome capture.** *Genome Biology and Evolution* 2011, **3**:209-218.
- Bordenstein SR, Wernegreen JJ: **Bacteriophage flux in endosymbionts (*Wolbachia*): Infection frequency, lateral transfer and recombination rates.** *Molecular Biology and Evolution* 2004, **21**(10):1981-1991.
- Ishmael N, Dunning Hotopp JC, Ioannidis P, Biber S, Sakamoto J, Nene V, Werren J, Bourtzis K, Bordenstein SR, et al: **Extensive genomic diversity of closely related *Wolbachia* strains.** *Microbiology* 2009, **155**(7):2211-2222.
- Bordenstein SR, Marshall ML, Fry AJ, Kim U, Wernegreen JJ: **The tripartite associations between bacteriophage, *Wolbachia*, and arthropods.** *PLoS Pathogens* 2006, **2**(5):e43.
- Canchaya C, Proux C, Fournous G, Bruttin A, Brussow H: **Prophage Genomics.** *Microbiology and Molecular Biology Reviews* 2003, **67**(2):238-276.
- Gavotte L, Vavre F, Henri H, Ravallec M, Stouthamer R, Bouletreau M: **Diversity, distribution and specificity of WO phage infection in *Wolbachia* of four insect species.** *Insect Molecular Biology* 2004, **13**(2):147-153.
- Sanogo YO, Dobson SL: **WO bacteriophage transcription in *Wolbachia*-infected *Culex pipiens*.** *Insect Biochemistry and Molecular Biology* 2005, **36**:80-85.
- Kent B, Bordenstein SR: **Phage WO of *Wolbachia*: lambda of the endosymbiont world.** *Trends in Microbiology* 2010, **18**(4):173-181.
- Casjens S: **Prophages and bacterial genomics: what have we learned so far?** *Molecular Microbiology* 2003, **49**:277-300.
- Zhou WG, Rousset F, O'Neill SL: **Phylogeny and PCR-based classification of *Wolbachia* strains using *wsp* gene sequences.** *Proceedings of the Royal Society B* 1998, **265**:509-515.
- Benson DA, Karsch-Mizrachi I, Lipman DJ, Ostell J, Wheeler DL: **GenBank.** *Nucleic Acids Research* 2008, **36**(Database issue):D25-30.
- Drummond A, Ashton B, Buxton S, Cheung M, Cooper A, Duran C, Field M, Heled J, Kearse M, Markowitz S, et al: **Geneious 5.4.** 2011 [http://www.geneious.com].
- Abascal F, Zardoya R, Posada D: **ProtTest: Selection of best-fit models of protein evolution.** *Bioinformatics* 2005, **21**:2104-2105.
- Guindon S, Gascuel O: **A simple, fast, and accurate algorithm to estimate large phylogenies by maximum likelihood.** *Systematic Biology* 2003, **52**:696-704.

26. Srividhya KV, Krishnaswamy S: **Sub classification and targeted characterization of prophage-encoded two-component lysis cassette.** *Journal of Biosciences* 2007, **32**(5):979-990.
27. Little J, Michalowski C: **Stability and instability in the lysogenic state of phage Lambda.** *Journal of Bacteriology* 2010, **192**(23):6064-6076.
28. Hoffmann AA, Turelli M, Simmons GM: **Unidirectional incompatibility between populations of *Drosophila simulans*.** *Evolution* 1986, **40**:692-701.
29. Veneti Z, Clark ME, Zabalou S, Karr TL, Savakis C, Bourtzis K: **Cytoplasmic incompatibility and sperm cyst infection in different *Drosophila-Wolbachia* associations.** *Genetics* 2003, **164**(2):545-552.
30. Saridakis A, Sapountzis P, Harris HL, Batista P, Biliske J, Pavlikaki H, Oehler S, Savakis C, Braig HR, Bouchon D: ***Wolbachia* prophage DNA adenine methyltransferase genes in different *Drosophila-Wolbachia* associations.** *PLoS One* 2011, **6**(5).
31. Lawrence JG, Hatfull GF, Hendrix RW: **Imbroglions of viral taxonomy: Genetic exchange and failings of phenetic approaches.** *Journal of Bacteriology* 2002, **184**(17):4891-4895.
32. Black L: **DNA packaging in dsDNA bacteriophages.** *Annual Review of Microbiology* 1989, **43**:267-292.
33. Rao VB, Feiss M: **The bacteriophage DNA packaging motor.** *Annual Review of Genetics* 2008, **42**:647-681.
34. Leiman PG, Arisaka F, van Raaij MJ, Kostyuchenko VA, Aksyuk AA, Kanamaru S, Rossmann MG: **Morphogenesis of the T4 tail and tail fibers.** *Virology Journal* 2010, **7**:355.
35. Iturbe-Ormaetxe I, Burke GR, Riegler M, O'Neill SL: **Distribution, expression, and motif variability of ankyrin domain genes in *Wolbachia pipientis*.** *Journal of Bacteriology* 2005, **187**(15):5136-5145.
36. Duron O, Boureux A, Echaubard P, Berthomieu A, Berticat C, Fort P, Weill M: **Variability and Expression of ankyrin domain genes in *Wolbachia* variants infecting the mosquito *Culex pipiens*.** *Journal of Bacteriology* 2007, **180**(12):4442-4448.
37. Walker T, Klasson L, Sebahia M, Sanders MJ, Thomson N, Parkhill J, Sinkins SP: **Ankyrin repeat domain-encoding genes in the wPip strain of *Wolbachia* from the *Culex pipiens* group.** *BMC Biology* 2007, **5**:39.
38. Yamada R, Iturbe-Ormaetxe I, Brownlie JC, O'Neill SL: **Functional test of the influence of *Wolbachia* genes on cytoplasmic incompatibility expression in *Drosophila melanogaster*.** *Insect Molecular Biology* 2010, **20**(1):75-85.

doi:10.1186/1471-2180-11-251

Cite this article as: Biliske et al.: The bacteriophage WORiC is the active phage element in wRi of *Drosophila simulans* and represents a conserved class of WO phages. *BMC Microbiology* 2011 **11**:251.

**Submit your next manuscript to BioMed Central
and take full advantage of:**

- Convenient online submission
- Thorough peer review
- No space constraints or color figure charges
- Immediate publication on acceptance
- Inclusion in PubMed, CAS, Scopus and Google Scholar
- Research which is freely available for redistribution

Submit your manuscript at
www.biomedcentral.com/submit

