

RESEARCH

Open Access



# Covering reinforced staples with polyethylene glycolic acid felt-covered fibrin sealant to prevent pancreatic fistula after distal pancreatectomy: a retrospective comparative study

Keishi Kawasaki, Tatsuya Hayashi\*, Makoto Takahashi and Yasuhiro Morita

## Abstract

**Background:** In accordance with previous reports on the utility of polyethylene glycolic acid (PGA) felt and fibrin glue for postoperative pancreatic fistula (POPF), we usually perform distal pancreatectomy (DP) with a PGA felt reinforcement stapler when dissecting the pancreas and cover the stump with PGA felt and fibrin glue (the PPF method). In this study, we retrospectively analyzed our DP cases to compare the risk factors for POPF and the postoperative course of patients receiving the PPF method of treatment versus that of those receiving conventional treatment.

**Methods:** A total of 127 DP procedures performed in our department between January 2008 and June 2021 were retrospectively analysed.

**Results:** In the PPF method, grade B/C POPF rate tended to decrease, and POPF rate showed a significant decrease. The duration of drainage and the length of postoperative hospitalisation were also significantly shorter with the PPF method. The risk of grade B/C POPF significantly decreased with the PPF method if the pancreas was thick (> 13.5 mm) or the patients were obese.

**Conclusions:** The PPF method is useful for POPF in DP and is particularly effective when a thick pancreas or obese patient is involved. Removing the drainage tube early in the PPF method may lead to early discharge.

**Keywords:** Postoperative pancreatic fistula, Distal pancreatectomy, Polyethylene glycolic acid felt, Fibrin glue

## Introduction

Postoperative pancreatic fistulas (POPF) are the most frequent complication of distal pancreatectomy (DP) and occur in 13–64% of cases [1–3]. POPF often cause various problems leading to wound infection, intra-abdominal abscess, haemorrhage, and sepsis, resulting in a longer hospital stay and higher medical costs. Thus,

the best approach to preventing POPF should be considered when performing a pancreatectomy. Many surgeons attempt to control POPF by performing various surgical techniques, but the ensuing results have mostly been unsuccessful in alleviating the problem [4, 5].

Polyethylene glycolic acid (PGA) felt is a soft, flexible, absorbable, and nonwoven material that is widely used for tissue reinforcement [6–8]. Its adhesion to tissue is the greatest when used with a fibrin sealant. Herein, we examined a combination therapy consisting of reinforcement mesh, PGA felt wrapping, and fibrin sealant

\*Correspondence: tatsuya\_hayashi@tmhp.jp

Department of General Surgery, Tokyo Metropolitan Tama Medical Center, 2-8-29 Musashidai, Fuchu, Tokyo 183-8524, Japan



application (PPF method) to evaluate the efficacy of this method in preventing POPF after DP. In this study, we retrospectively analysed our DP cases to compare the risk factors for POPF and the postoperative course of patients receiving the PPF method of treatment versus that of those receiving conventional treatment.

**Methods**

**Patient demographics and clinical presentations**

Between January 2008 and June 2021, 127 consecutive patients underwent DP under general anaesthesia at the Tokyo Metropolitan Tama Medical Center. Patient data were retrieved from prospectively maintained databases and included baseline patient characteristics such as demographic data, preoperative risk factors, comorbidities, operative characteristics, and postoperative outcomes.

All patients routinely underwent a preoperative enhanced computed tomography (CT). Imaging findings were assessed for main pancreatic duct (MPD) size, pancreatic thickness, and pancreatitis. Pancreatic duct dilatation was defined as MPD diameter >3 mm on CT, a thick pancreas was defined as thickness >13.5 mm, and pancreatitis was defined as peripancreatic infiltration or fluid collection on CT. The cutoff level of continuous variables was set based on Youden’s index using receiver operating characteristic (ROC) analysis of age, body mass

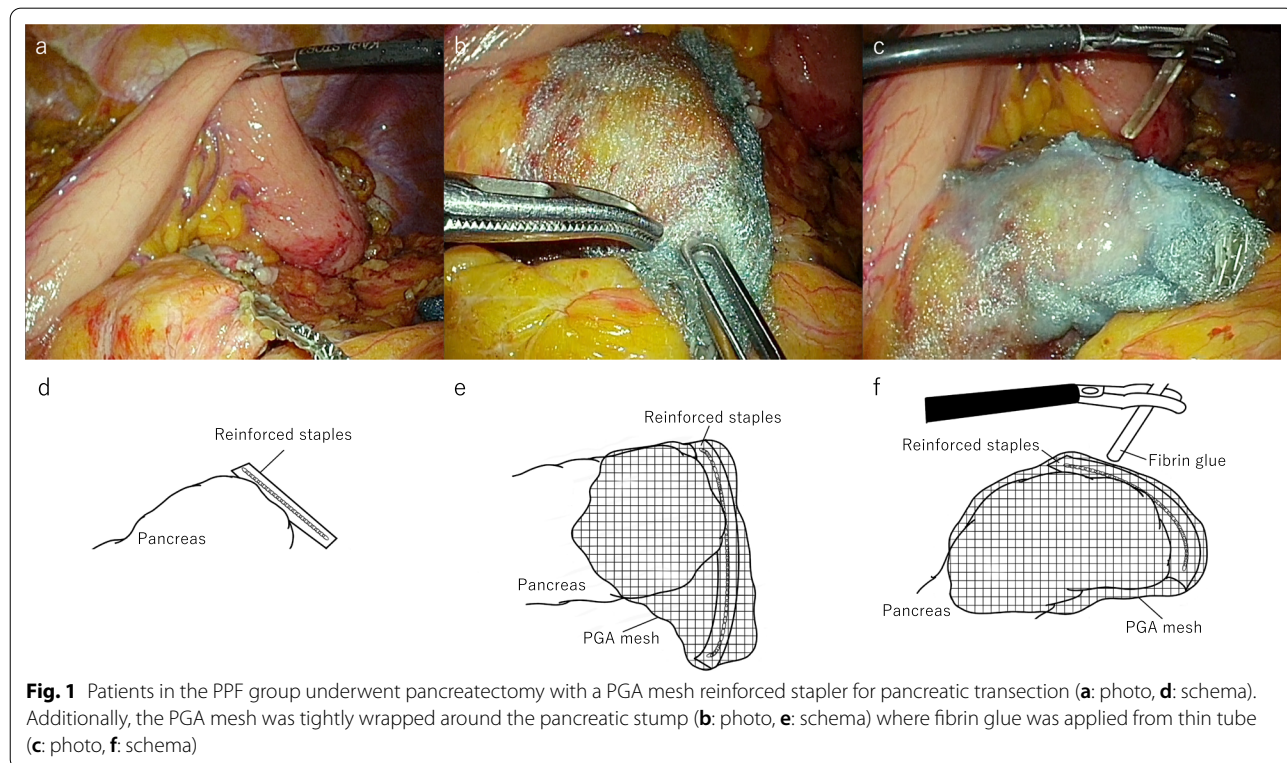
index (BMI), MPD diameter, pancreatic thickness, operation time, and intraoperative blood loss. The texture of the pancreas was classified as soft or hard according to the operating surgeon’s discretion. POPF was evaluated using the International Study Group for Pancreatic Fistula (ISGPF) definition [9]. We defined delayed gastric emptying (DGE) as the inability to return to a standard diet by the end of the first postoperative week and included prolonged nasogastric intubation [10]. Chyle leak was defined as a triglyceride level in the drain higher than 110 mg/dl on or after postoperative day 3 [11].

All surgeries were performed after obtaining informed consent from the patients. This study was performed in accordance with the guidelines of the Declaration of Helsinki and its later amendments.

**Surgical techniques**

For retrospective analysis, the stump closure method was selected at the discretion of the surgeon; however, the method of closing the pancreatic stump has generally changed over time.

Patients in the PPF group underwent pancreatectomy with a PGA mesh reinforced stapler for pancreatic transection. Additionally, the PGA mesh was tightly wrapped around the pancreatic stump where fibrin glue was applied from thin tube (Fig. 1). The type of cartridge was selected based



on the thickness and texture of the pancreas by each surgeon during the operation.

### Statistical analysis

Categorical variables were expressed as numbers (%) and were compared using the chi-square test or Fisher's exact test, as appropriate. Continuous variables were expressed as medians (interquartile range [IQR]) and were compared using Wilcoxon's rank sum test. Statistical significance was set at  $P < 0.05$ . All statistical analyses were performed using the commercially available software JMP® 13 (SAS Institute Inc., Cary, NC, USA).

## Results

### Patient demographics and clinical presentations

Between January 2008 and June 2021, 127 consecutive patients underwent DP. The median age of all patients was 70 years (IQR: 61–77 years), and the median BMI was 22.2 kg/m<sup>2</sup>. Examination showed that 46 patients (36.2%) had a soft pancreas, and 92 (72.4%) had a diagnosis of malignancy. The remaining 35 patients (27.6%) were diagnosed with benign disease, including 12 (9.4%) cases of intraductal papillary mucinous neoplasms, ten (7.8%) cases of neuroendocrine tumour, three (2.4%) cases of mucinous cystic neoplasm, three (2.4%) cases of serous cystic neoplasm, and seven (5.5%) cases of other diseases. The surgical procedures included open DP (ODP) in 65 patients (51.2%), laparoscopic DP (LDP) in 61 patients (48.0%), and robot-assisted DP (RDP) in one patient (0.8%). The pancreatic stump was treated using the PPF method in 17 patients (13.4%), reinforced staplers alone in 29 patients (22.8%), staplers alone in 68 patients (53.5%), and MPD ligation in 13 patients (10.2%). The median operation time in all cases was 334 min (IQR: 275–394 min), and the median intraoperative blood loss was 340 ml (IQR: 150–870 ml). Prefiring compression was done in 85 patients, including 17 using the PPF method. Grade B/C POPF occurred in 56 patients (44.1%) (Table 1).

### Comparison of the factors related to grade B/C POPF

Grade B/C POPF developed in 56 (44.1%) DP's, and the all the cases were Grade B. There were no cases of POPF-related death. Based on Youden's index using ROC analysis of grade B/C POPE, the 127 patients were divided into two groups based on age, BMI, MPD diameter, pancreatic thickness, operation time, and intraoperative blood loss. Most of the patients who developed a fistula after DP were obese. High BMI was associated with a higher fistula rate. (63.4% vs. 83.9%;  $P = 0.010$ ).

Pancreatic characteristics, including duct size and gland texture, may be used to identify patients at high risk of fistula development following DP. Large

**Table 1** Patient demographics and clinical presentations

Variables	Total (n = 127)
Age, years (median (range))	70.0 (61.0–77.0)
BMI, kg/m <sup>2</sup> (median (range))	22.2 (20.4–24.9)
Histological grade (benign vs. malignancy)	92/35
Pancreatic texture (soft vs. hard)	46/81
Minimal invasive surgery (open vs. lap/robot)	65/62
MPD size, mm (median (range))	2.9 (2.3–3.5)
Thickness of resection, mm (median (range))	13.5 (10.9–15.9)
Pancreatitis (yes vs. no)	63/64
Operation time, min. (median (range))	334.0 (275.0–394.0)
Blood loss, ml (median (range))	340.0 (150.0–870.0)
Pre-compression (yes vs. no)	85/42
PPF method (yes vs. no)	17/110
POPF (no-POPF, BL vs. grade B/C POPF)	71/56

BMI body mass index, MPD main pancreatic duct, POPF postoperative pancreatic fistula, BL biochemical leak

MPD ( $\geq 3$  mm) and thick pancreas ( $\geq 13.5$  mm) were also associated with a higher fistula rate (38.0% vs. 57.1%;  $P = 0.032$  and 42.3% vs. 60.7%;  $P = 0.039$ , respectively). There was no significant difference in the pancreatic texture in the present cohort.

The intraoperative factors were also examined. An intraoperative blood loss  $> 800$  ml was associated with a higher fistula rate (12.7% vs. 46.4%;  $P < 0.001$ ). Minimally invasive procedures, including laparoscopic and robotic surgery and prefiring compression, were not significantly associated with grade B/C POPF formation ( $P = 0.096$  and  $P = 0.452$ , respectively) (Table 2).

### Risk factors associated with POPF

Univariate analysis revealed that a soft pancreas (odds ratio [OR]: 6.03;  $P = 0.020$ ), large blood loss (OR: 7.02;  $P = 0.003$ ), and non-application of the PPF method (OR: 0.18;  $P = 0.023$ ) were independent predictors of grade B/C POPF. Multivariate analysis revealed that only excess blood loss (OR: 7.64;  $P < 0.001$ ) was an independent predictor of grade B/C POPF (Table 3). These findings suggested that the non-application of the PPF method could be a risk factor for POPF.

### Comparison of postoperative outcomes in the PPF and conventional groups

The PPF and conventional groups consisted of 17 patients (13.4%) and 110 patients (86.6%), respectively. The grade B/C POPF rate (13.9% vs. 24.0%;  $P = 0.006$ ) tended to be lower in the PPF group. The rates of other surgical complications, including DGE, post-pancreatectomy haemorrhage, and chyle leakage, were similar between the groups. In addition, the rates of postoperative

**Table 2** Comparison of the factors related to grade B/C POPF

Variables	No-POPF (n = 71)	Grade B/C POPF (n = 56)	P value
Age, years ( $\geq 75$ vs. $< 75$ )	24/47	14/41	0.394
BMI, kg/m <sup>2</sup> ( $\geq 20.5$ vs. $< 20.5$ )	45/26	47/9	0.010
Histological grade (benign vs. malignant)	20/51	15/41	0.863
Pancreatic texture (soft vs. hard)	26/45	20/36	0.916
Minimal invasive surgery (open vs. lap/robot)	30/41	32/24	0.096
MPD size, mm ( $\geq 3$ vs. $< 3$ )	27/44	32/24	0.032
Thickness of resection, mm ( $\geq 13.5$ vs. $< 13.5$ )	30/41	34/22	0.039
Pancreatitis (Yes vs. No)	33/38	26/30	0.427
Operation time, min. ( $\geq 445$ vs. $< 445$ )	5/66	9/47	0.107
Blood loss, ml ( $\geq 800$ vs. $< 800$ )	9/62	26/30	$< 0.001$
Pre-compression (yes vs. no)	49/21	35/20	0.452
PPF method (yes vs. no)	13/58	4/52	0.067

POPF postoperative pancreatic fistula, BMI body mass index, MPD main pancreatic duct

**Table 3** Risk factors associated with grade B/C POPF

	Univariate analysis		Multivariate analysis	
	Hazard ratio	P-value	Hazard ratio	P-value
Age, years ( $\geq 75$ vs. $< 75$ )	1.220 (0.489–3.041)	0.669		
BMI, kg/m <sup>2</sup> ( $\geq 20.5$ vs. $< 20.5$ )	2.612 (0.958–7.123)	0.061		
Histological grade (benign vs. malignant)	3.664 (0.858–15.648)	0.080		
Pancreatic texture (soft vs. hard)	6.027 (1.336–27.192)	0.020	2.356 (0.967–5.740)	0.059
Minimal invasive surgery (open vs. lap/robot)	1.262 (0.403–3.946)	0.690		
MPD size, mm ( $\geq 3$ vs. $< 3$ )	1.556 (0.640–3.784)	0.329		
Thickness of resection, mm ( $\geq 13.5$ vs. $< 13.5$ )	2.135 (0.842–5.418)	0.110		
Pancreatitis (Yes vs. No)	1.152 (0.440–3.017)	0.774		
Operation time, min. ( $\geq 445$ vs. $< 445$ )	2.155 (0.481–9.648)	0.315		
Blood loss, ml ( $\geq 800$ vs. $< 800$ )	7.019 (1.984–24.836)	0.003	7.643 (2.889–20.217)	$< 0.001$
Pre-compression (yes vs. no)	1.641 (0.592–4.548)	0.341		
PPF method (yes vs. no)	0.177 (0.040–0.788)	0.023	0.382 (0.108–1.352)	0.136

POPF postoperative pancreatic fistula, BMI body mass index, MPD main pancreatic duct

intra-abdominal fluid collection were significantly lower in the PPF group. Moreover, compared with the control group, the PPF group had a significantly shorter median length of drainage tube insertion and hospital stay (22 days vs. 8 days;  $P < 0.001$  and 28 days vs. 12 days;  $P < 0.001$ , respectively) (Table 4).

#### Comparison of postoperative outcomes in POPF high-risk cases in the PPF and conventional groups

Grade B/C POPF occurrence did not decrease uniformly in all cases treated with the PPF method. However, it decreased significantly among patients in the PPF group with a thick pancreas ( $> 13.5$  mm) or a high BMI ( $P = 0.022$  and  $P = 0.016$ , respectively). Grade B/C POPF was also evaluated in patients with a large MPD diameter

and a soft pancreatic texture, but no significant difference was found between these groups (Fig. 2).

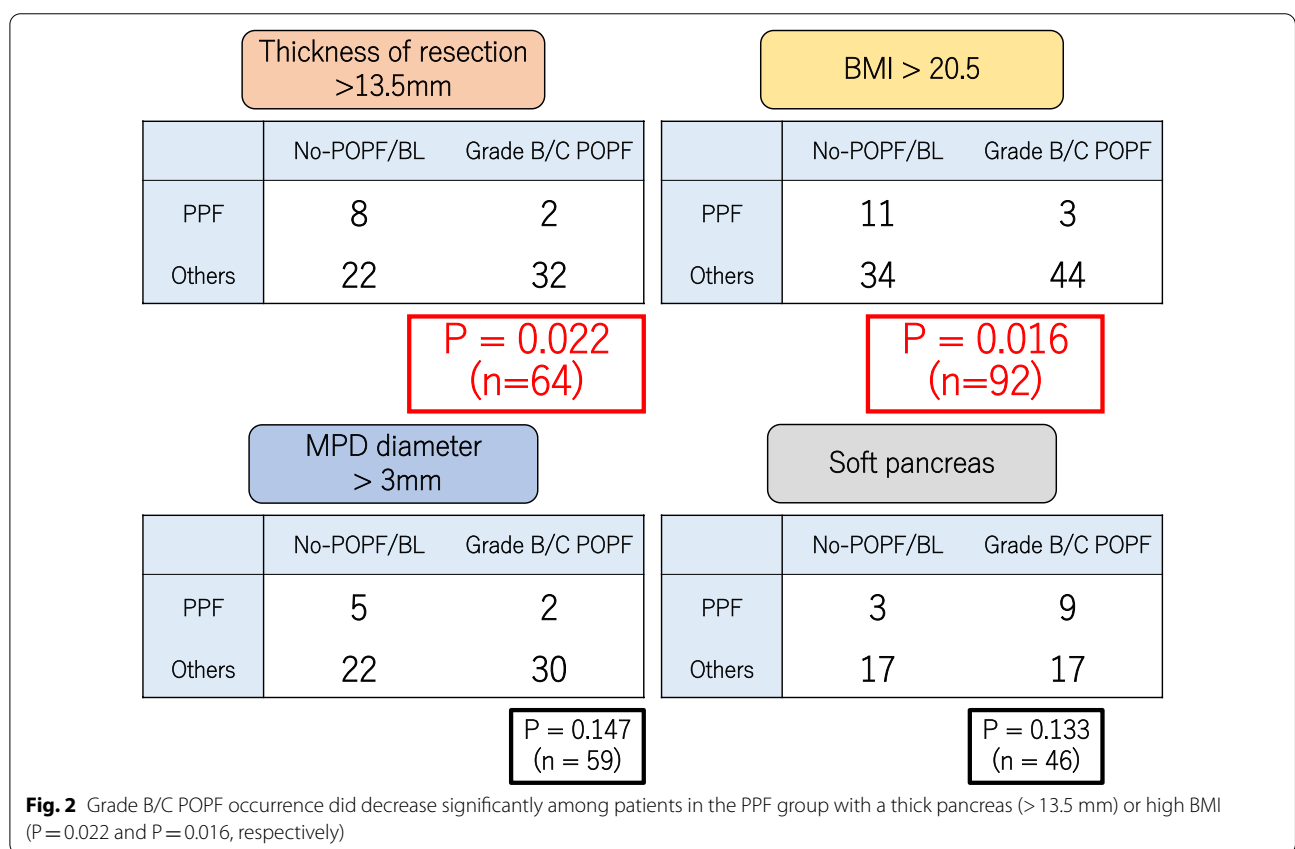
#### Comparison of postoperative outcomes between the PPF and reinforced stapler-alone groups

A previous study revealed that the use of a stapler with PGA mesh reinforcement independently decreased the risk of post-DP pancreatic fistula formation [12, 13]. It is possible that only PGA reinforcement without additional PGA mesh wrapping or fibrin glue was sufficient to prevent post-DP POPF. Thus, we compared the reinforced stapler-alone and PPF methods and found that grade B/C POPF occurrence decreased to a significantly greater extent in the PPF group than in the reinforced stapler-alone group ( $P = 0.028$ ). (Fig. 3).

**Table 4** Comparison of postoperative outcomes in the PPF and conventional group

Variables	Former (n = 110)	PPF (n = 17)	P value
POPF (no-POPF vs. BL, grade B/C POPF)	35/75	10/7	0.030
Grade B/C POPF (no-POPF, BL vs. grade B/C POPF)	58/52	13/4	0.067
Intra-abdominal fluid collection (yes vs. no)	2/108	5/12	<0.001
Delayed gastric emptying (yes vs. no)	13/97	0/17	0.135
Chyle leak (yes vs. no)	19/91	1/16	0.230
PPH (yes vs. no)	2/108	0/17	0.575
Duration of drainage tube insertion, days	22.0 (10.0–38.0)	8.0 (6.0–14.5)	<0.001
Length of hospital stay, days	28.0 (14.8–40.3)	12.0 (9.5–19.0)	<0.001

POPF postoperative pancreatic fistula, BL biochemical leak, PPH post-pancreatectomy haemorrhage



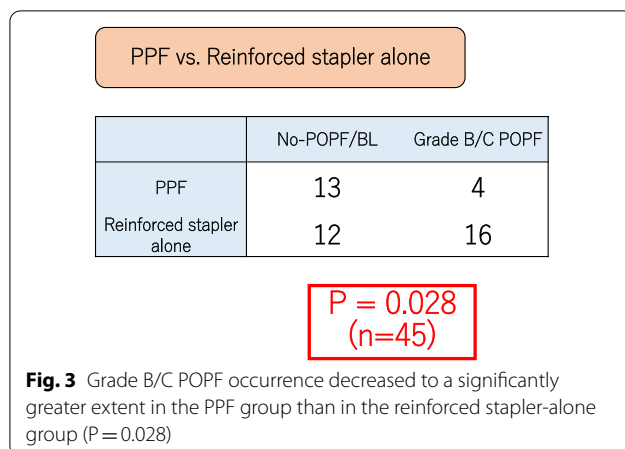
**Discussion**

Previous studies have reported several methods for preventing POPE, including MPD ligation [14], staple closure [15, 16], pancreatico-intestinal anastomosis [17], and somatostatin analogues [18, 19]. However, the effectiveness of all these methods remains unclear.

Fibrin sealant is widely used to prevent POPF in patients with DP [20, 21]. Suzuki et al. showed that intraoperative fibrin sealant was effective in preventing POPF after DP. They revealed that POPF decreased significantly in the fibrin sealant group compared to that in the control

group (15% vs. 40%). Ohwada et al. reported the fibrin sealant sandwich technique. They inserted fibrin sealant between the dorsal and ventral edges of the pancreatic stump. They reported that POPF decreased significantly in the sandwich technique group compared to that in the simple sealing group (9% vs. 27%).

PGA felt (Neoveil; Gunze), a bioabsorbable recombinant membrane made of synthetic polymer with a cellulose-like structure, is frequently used with fibrin sealant in thoracic surgery. Several studies have revealed that the application of layers of PGA felt on the remnant

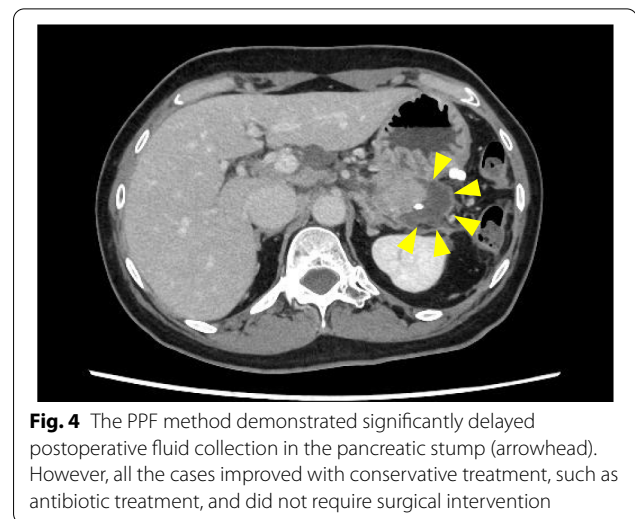


pancreatic stump and the use of fibrin glue with layers of PGA mesh are effective in preventing post-DP pancreatic fistula development [22, 23].

Previous studies have reported that the use of a reinforced stapler [12, 13] in pancreatic transection decreases the risk of POPF formation. Kawaida et al. reported that POPF rates with and without a reinforcement stapler were 3.6% and 13.5%, respectively [12]. The present study also examined whether a reinforced stapler alone was sufficient but found that the grade B/C POPF incidence was significantly lower in the PPF method group than in the reinforced stapler-alone group. In addition, in recent years, two RCTs have reported that the reinforcement stapler alone is not sufficient for POPF prevention in DP, which also suggests that further technical ingenuity is required for pancreatic stump closure with the reinforcement stapler alone [24, 25].

The present study focused on patients with a high risk of POPF characterised by a soft pancreas, wide MPD, obesity, or thick pancreatic resection. We assumed that pancreatic fistulas were less likely to develop if a method for treating the pancreatic stump was used with pancreatic resection in patients with a low risk of pancreatic fistula formation, such as those with a hard or thin pancreas, a normal-sized MPD, or normal BMI. Therefore, our investigation of pancreatic resection in patients with a high risk of POPF found that the PPF method is useful in patients with a thick pancreas or obesity, suggesting that using the PPF method in patients with a high risk of POPF may lead to better outcomes.

In addition, the PPF method significantly demonstrated delayed postoperative fluid collection in the pancreatic stump. However, all the patients improved with conservative treatment, such as antibiotic treatment, and did not require surgical intervention (Fig. 4). These results suggest that even if fluid collection in



the pancreatic stump, a form of pancreatic fistula, is observed with the PPF method, conservative treatment can sufficiently improve the patient's condition to enable early removal of the drainage tube. The PPF method is particularly effective in dissecting a thick pancreas, and early removal of the drainage tube in the PPF method has the potential to promote early discharge.

A previous study reported a new method of using PGA felt in conjunction with fibrin sealant for pancreaticojejunal (PJ) anastomosis in pancreaticoduodenectomies, however, its utility remains controversial [8, 26]. We hypothesised that the covering of the PJ anastomotic line itself is probably a reason for the disappointing outcomes, i.e., completely wrapping and sealing the PJ anastomosis can cause exudates, including pancreatic juice from the small ductal branches of the cut surface of the pancreatic remnant, to collect leading to PJ anastomosis infection and eventually POPF formation.

In conclusion, the present study found that the PPF method may be useful for preventing post-DP pancreatic fistula and is particularly effective when dissecting a thick pancreas or performing DP in an obese patient. Moreover, early drainage tube removal in the PPF method may lead to early discharge.

#### Abbreviations

POPF: Postoperative pancreatic fistula; DP: Distal pancreatectomy; PGA: Polyethylene glycolic acid; CT: Computed tomography; MPD: Main pancreatic duct; ROC: Receiver operating characteristic; BMI: Body mass index; ISGPF: International study group for pancreatic fistula; DGE: Delayed gastric emptying; IQR: Interquartile range; LDP: Laparoscopic distal pancreatectomy; OD: Odd ratio; RDP: Robot-assisted distal pancreatectomy; PJ: Pancreaticojejunal.

#### Acknowledgements

The Authors thank Editage ([www.editage.com](http://www.editage.com)) and James Robert Valera for professionally editing the English draft of this manuscript.

### Author contributions

KK and TH designed the study. KK analyzed and interpreted the patient data. KK was involved in acquisition of data. KK was a major contributor in writing the manuscript. TH revised the manuscript. All authors given their final approval to the version to be published and agreed to be accountable for all aspects of the work in ensuring that questions related to the accuracy or integrity of any part of the work are appropriately investigated and resolved. All authors read and approved the final manuscript.

### Funding

This manuscript did not receive sponsorship for publication.

### Availability of data and materials

The datasets used and/or analyzed during the current study available from the corresponding author on reasonable request.

### Declarations

#### Ethics approval and consent to participate

The study was approved by the ethics committee of the University Hospital Medical Information Network (No. UMIN000047580). Our study was in compliance with the regulations and carried out in accordance with the relevant guidelines. Data collection and analysis followed the ethical guidelines of the World Medical Association Declaration of Helsinki. Informed consent was obtained from all participants.

#### Consent for publication

Not applicable.

#### Competing interests

The authors declare that they have no competing interests.

Received: 17 April 2022 Accepted: 13 September 2022

Published online: 22 September 2022

### References

- Knaebel H, Diener M, Wente M, Büchler M, Seiler C. Systematic review and meta-analysis of technique for closure of the pancreatic remnant after distal pancreatectomy. *Br J Surg*. 2005;92(5):539–46.
- Lillemoe KD, Kaushal S, Cameron JL, Sohn TA, Pitt HA, Yeo CJ. Distal pancreatectomy: indications and outcomes in 235 patients. *Ann Surg*. 1999;229(5):693.
- Rodríguez JR, Germes SS, Pandharipande PV, Gazelle GS, Thayer SP, Warshaw AL, et al. Implications and cost of pancreatic leak following distal pancreatic resection. *Arch Surg*. 2006;141(4):361–6.
- Balcom JH IV, Rattner DW, Warshaw AL, Chang Y, Fernandez-del Castillo C. Ten-year experience with 733 pancreatic resections: changing indications, older patients, and decreasing length of hospitalization. *Arch Surg*. 2001;36(4):391.
- Fernández-del Castillo C, Rattner DW, Warshaw AL. Standards for pancreatic resection in the 1990s. *Arch Surg*. 1995;130(3):295–300.
- Golling M, Schaudt A, Mehrabi A, Mood ZA, Bechstein WO. Clinical application of soft polyglycolic acid felt for hemostasis and repair of a lacerated liver: report of two cases. *Surg Today*. 2008;38(2):188–92.
- Itano H. The optimal technique for combined application of fibrin sealant and bioabsorbable felt against alveolar air leakage. *Eur J Cardiothorac Surg*. 2008;33(3):457–60.
- Ochiai T, Sonoyama T, Soga K, Inoue K, Ikoma H, Shiozaki A, et al. Application of polyethylene glycolic acid felt with fibrin sealant to prevent postoperative pancreatic fistula in pancreatic surgery. *J Gastrointest Surg*. 2010;14(5):884–90.
- Bassi C, Marchegiani G, Dervenis C, Sarr M, Hilal MA, Adham M, et al. The 2016 update of the International Study Group (ISGPS) definition and grading of postoperative pancreatic fistula: 11 years after. *Surgery*. 2017;161(3):584–91.
- Wente MN, Bassi C, Dervenis C, Fingerhut A, Gouma DJ, Izbicki JR, et al. Delayed gastric emptying (DGE) after pancreatic surgery: a suggested definition by the International Study Group of Pancreatic Surgery (ISGPS). *Surgery*. 2007;142(5):761–8.
- Besselink MG, van Rijssen LB, Bassi C, Dervenis C, Montorsi M, Adham M, et al. Definition and classification of chyle leak after pancreatic operation: a consensus statement by the International Study Group on Pancreatic Surgery. *Surgery*. 2017;161(2):365–72.
- Kawaida H, Kono H, Amemiya H, Hosomura N, Saito R, Takahashi K, et al. Use of a reinforced triple-row stapler following distal pancreatectomy reduces the incidence of postoperative pancreatic fistula in patients with a high BMI. *Anticancer Res*. 2019;39(2):1013–8.
- Pulvirenti A, Landoni L, Borin A, De Pastena M, Fontana M, Pea A, et al. Reinforced stapler versus ultrasonic dissector for pancreatic transection and stump closure for distal pancreatectomy: a propensity matched analysis. *Surgery*. 2019;166(3):271–6.
- Bilimoria M, Cormier J, Mun Y, Lee J, Evans D, Pisters P. Pancreatic leak after left pancreatectomy is reduced following main pancreatic duct ligation. *Br J Surg*. 2003;90(2):190–6.
- Diener MK, Seiler CM, Rossion I, Kleeff J, Glanemann M, Butturini G, et al. Efficacy of stapler versus hand-sewn closure after distal pancreatectomy (DISPACT): a randomised, controlled multicentre trial. *The Lancet*. 2011;377(9776):1514–22.
- Ferrone CR, Warshaw AL, Rattner DW, Berger D, Zheng H, Rawal B, et al. Pancreatic fistula rates after 462 distal pancreatectomies: staplers do not decrease fistula rates. *J Gastrointest Surg*. 2008;12(10):1691–8.
- Wagner M, Gloor B, Ambühl M, Worni M, Lutz J, Angst E, et al. Roux-en-Y drainage of the pancreatic stump decreases pancreatic fistula after distal pancreatic resection. *J Gastrointest Surg*. 2007;11(3):303–8.
- Allen PJ, Gönen M, Brennan MF, Bucknor AA, Robinson LM, Pappas MM, et al. Pasireotide for postoperative pancreatic fistula. *N Engl J Med*. 2014;370(21):2014–22.
- Yeo CJ, Cameron JL, Lillemoe KD, Sauter PK, Coleman J, Sohn TA, et al. Does prophylactic octreotide decrease the rates of pancreatic fistula and other complications after pancreaticoduodenectomy?: Results of a prospective randomized placebo-controlled trial. *Ann Surg*. 2000;232(3):419.
- Ohwada S, Ogawa T, Tanahashi Y, Nakamura S, Takeyoshi I, Ohya T, et al. Fibrin glue sandwich prevents pancreatic fistula following distal pancreatectomy. *World J Surg*. 1998;22(5):494–8.
- Suzuki Y, Kuroda Y, Morita A, Fujino Y, Tanioka Y, Kawamura T, et al. Fibrin glue sealing for the prevention of pancreatic fistulas following distal pancreatectomy. *Arch Surg*. 1995;130(9):952–5.
- Ikegami T, Maeda T, Kayashima H, Oki E, Yoshizumi T, Sakaguchi Y, et al. Soft coagulation, polyglycolic acid felt, and fibrin glue for prevention of pancreatic fistula after distal pancreatectomy. *Surg Today*. 2011;41(9):1224–7.
- Jang JY, Shin YC, Han Y, Park JS, Han H-S, Hwang HK, et al. Effect of polyglycolic acid mesh for prevention of pancreatic fistula following distal pancreatectomy: a randomized clinical trial. *JAMA Surg*. 2017;152(2):150–5.
- Landoni L, De Pastena M, Fontana M, Malleo G, Esposito A, Casetti L, et al. A randomized controlled trial of stapled versus ultrasonic transection in distal pancreatectomy. *Surg Endosc*. 2022;36(6):4033–41.
- Wennerblom J, Ateeb Z, Jönsson C, Björnsson B, Tingstedt B, Williamsson C, et al. Reinforced versus standard stapler transection on postoperative pancreatic fistula in distal pancreatectomy: multicentre randomized clinical trial. *Br J Surg*. 2021;108(3):265–70.
- Satoi S, Toyokawa H, Yanagimoto H, Yamamoto T, Hirooka S, Yui R, et al. Reinforcement of pancreaticojejunostomy using polyglycolic acid mesh and fibrin glue sealant. *Pancreas*. 2011;40(1):16–20.

### Publisher's Note

Springer Nature remains neutral with regard to jurisdictional claims in published maps and institutional affiliations.