

Supplementary Information:

Proteomic Characterization and Cytotoxic Potential of Proteins from *Cuscuta (Cuscuta epithymum (L.)* Crude Herbal Product Against MCF-7 Human Breast Cancer Cell Line

Umaima Akhtar^{1,3}, Yamna Khurshid¹, Bishoy El-Aarag^{1,2}, Basir Syed¹, Ishtiaq A. Khan³, Keykavous Parang¹, and Aftab Ahmed^{1*}

1. Biomedical and Pharmaceutical Sciences, Chapman University School of Pharmacy, 9401 Jeronimo Road, Irvine, CA 92618, USA.

2. Biochemistry Division, Chemistry Department, Faculty of Science, Menoufia University, Shebin El-Koom 32512, Egypt

3. Jamil-ur-Rahman Center for Genome Research, International Center for Chemical and Biological Sciences, University of Karachi, Karachi-75270, Pakistan.

* Corresponding author

Aftab Ahmed
Chapman University
School of Pharmacy
9401 Jeronimo Road Irvine, CA 92618 USA
Tel: (714) 516-5465
Fax: (714) 516-5481
aahmed@chapman.edu

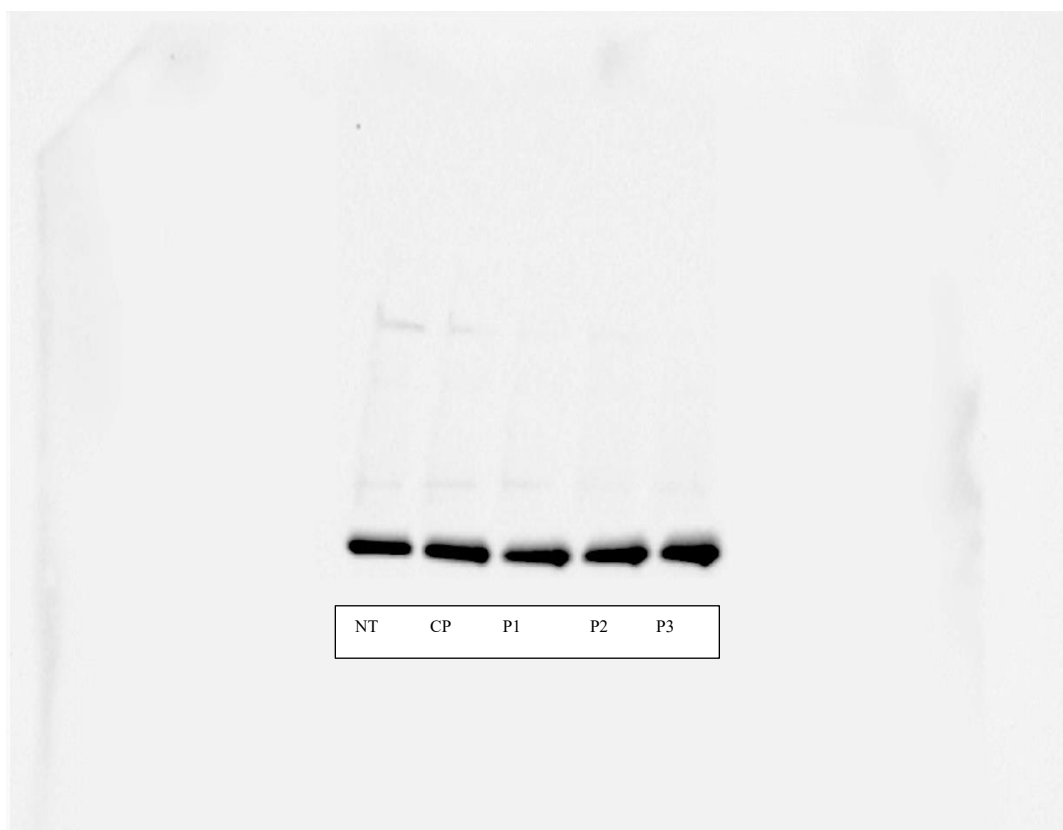


Figure S1: Gel/blots image of Bax protein in non-treated (NT) MCF-7 cells and treated with crude protein (CP) and fractions P1, P2, and P3.

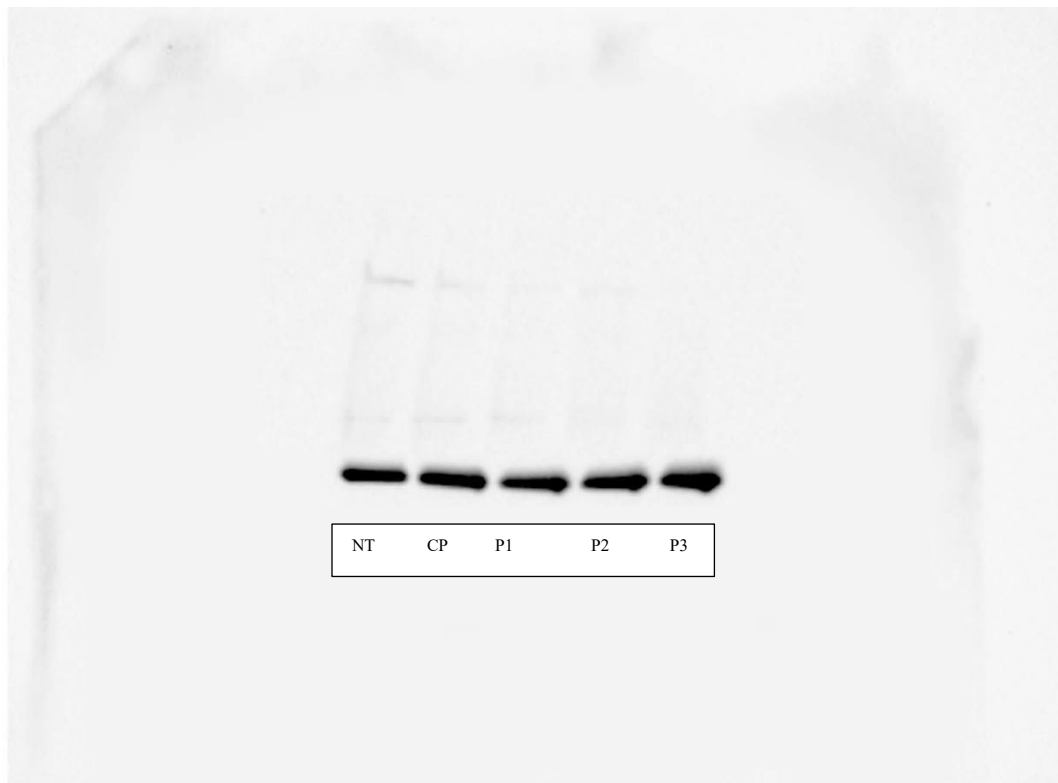


Figure S2: Gel/blots image of Bax protein in non-treated (NT) MCF-7 cells and treated with crude protein (CP) and fractions P1, P2, and P3.

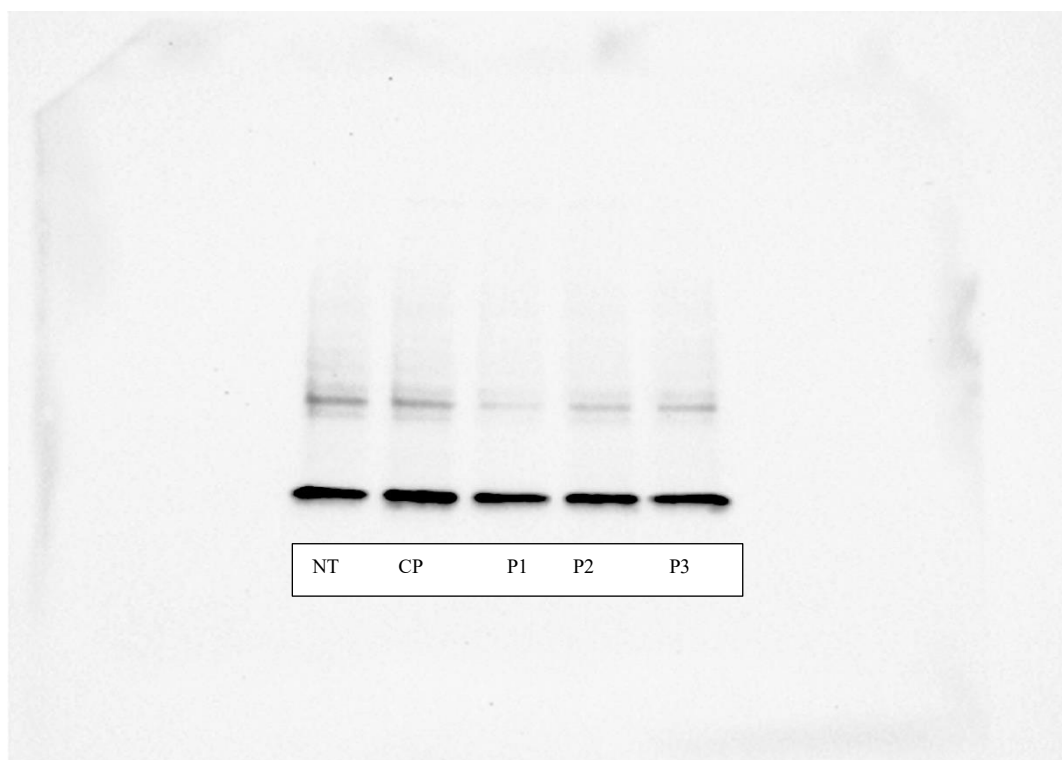


Figure S3: Gel/blots image of Bax protein in non-treated (NT) MCF-7 cells and treated with crude protein (CP) and fractions P1, P2, and P3.

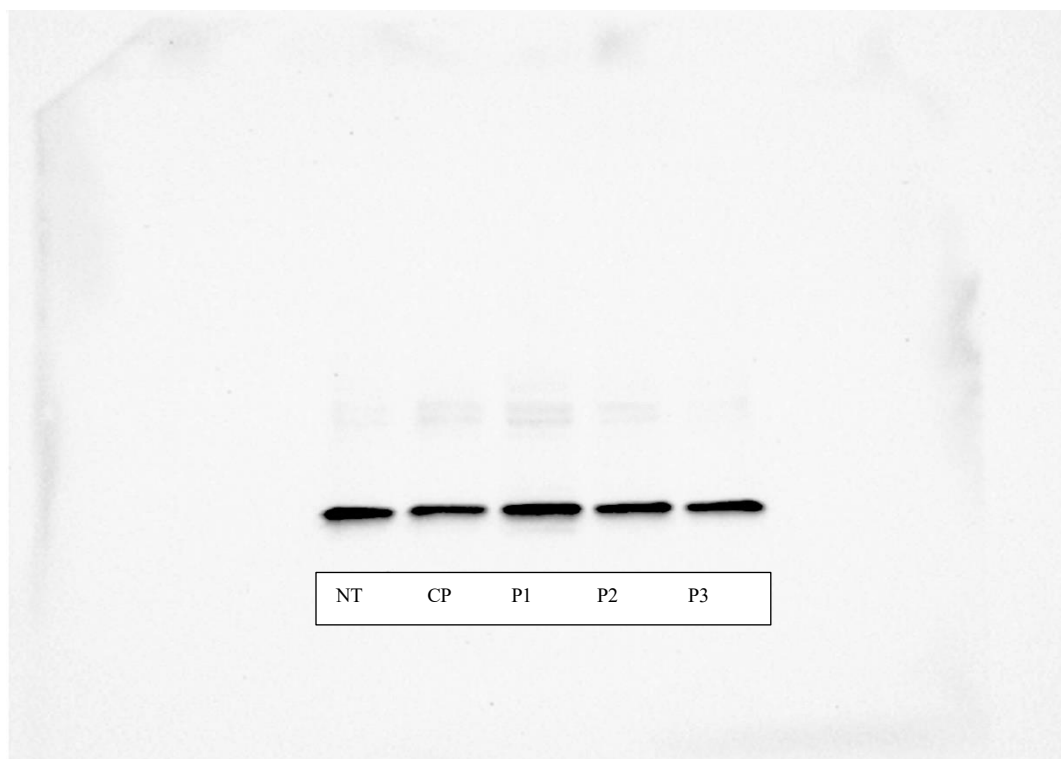


Figure S4: Gel/blots image of Bcl-2 protein in non-treated (NT) MCF-7 cells and treated with crude protein (CP) and fractions P1, P2, and P3.

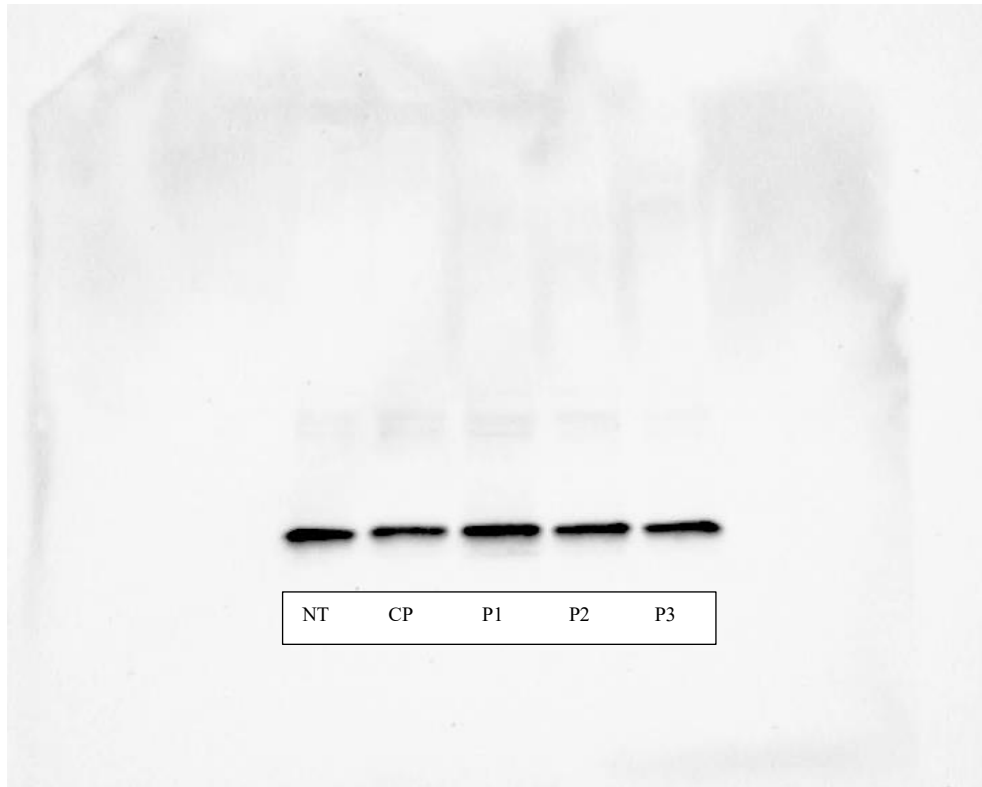


Figure S5: Gel/blots image of Bcl-2 protein in non-treated (NT) MCF-7 cells and treated with crude protein (CP) and fractions P1, P2, and P3.

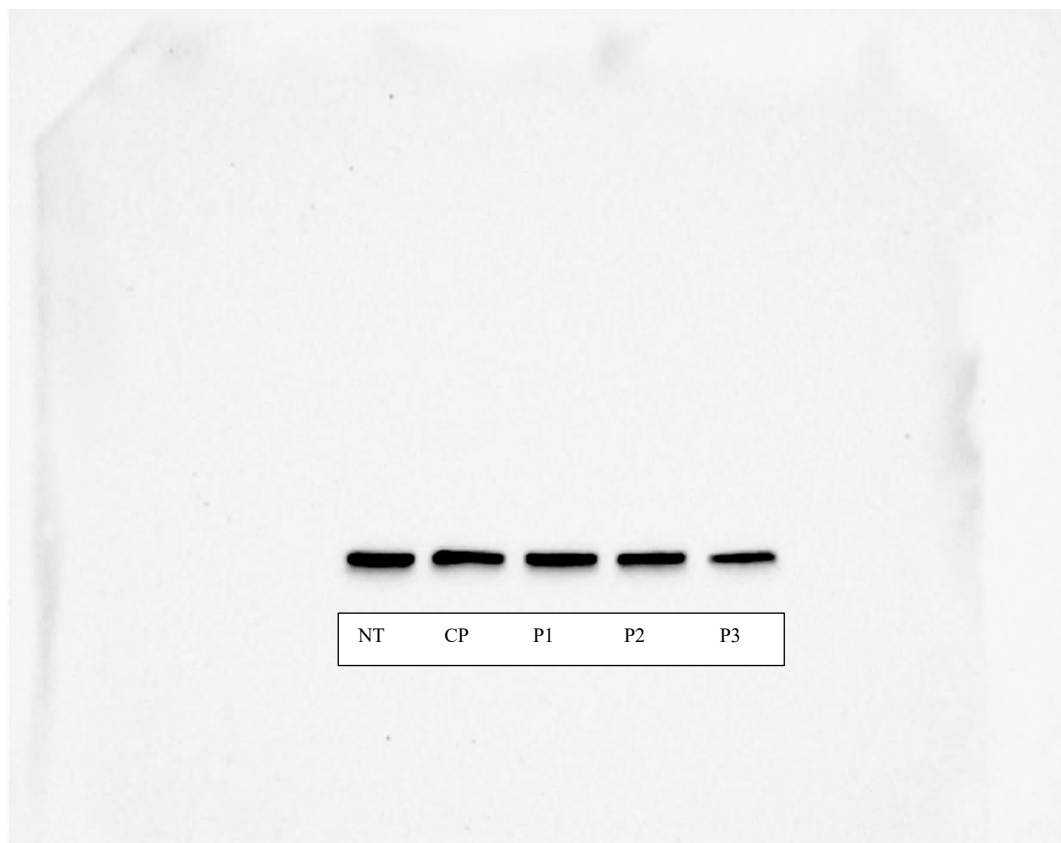


Figure S6: Gel/blots image of Bcl-2 protein in non-treated (NT) MCF-7 cells and treated with crude protein (CP) and fractions P1, P2, and P3.

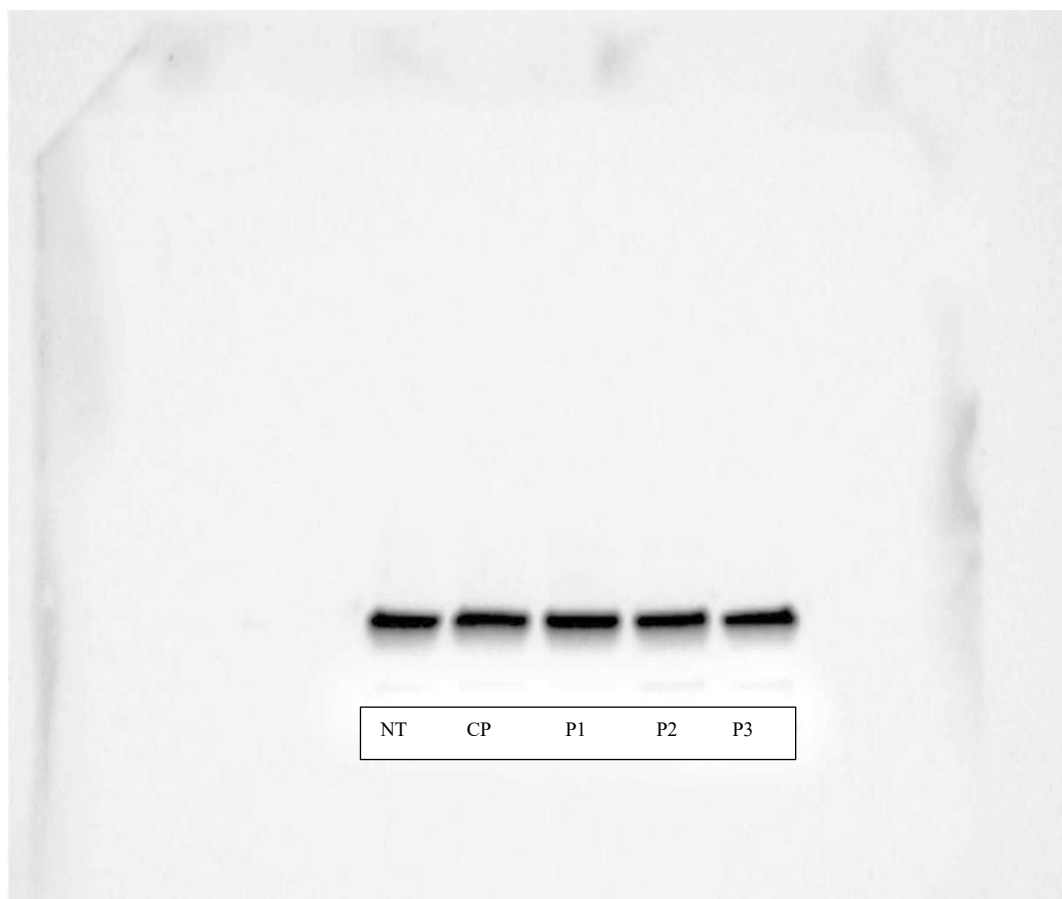


Figure S7: Gel/blots image of GAPDH protein in non-treated (NT) MCF-7 cells and treated with crude protein (CP) and fractions P1, P2, and P3.

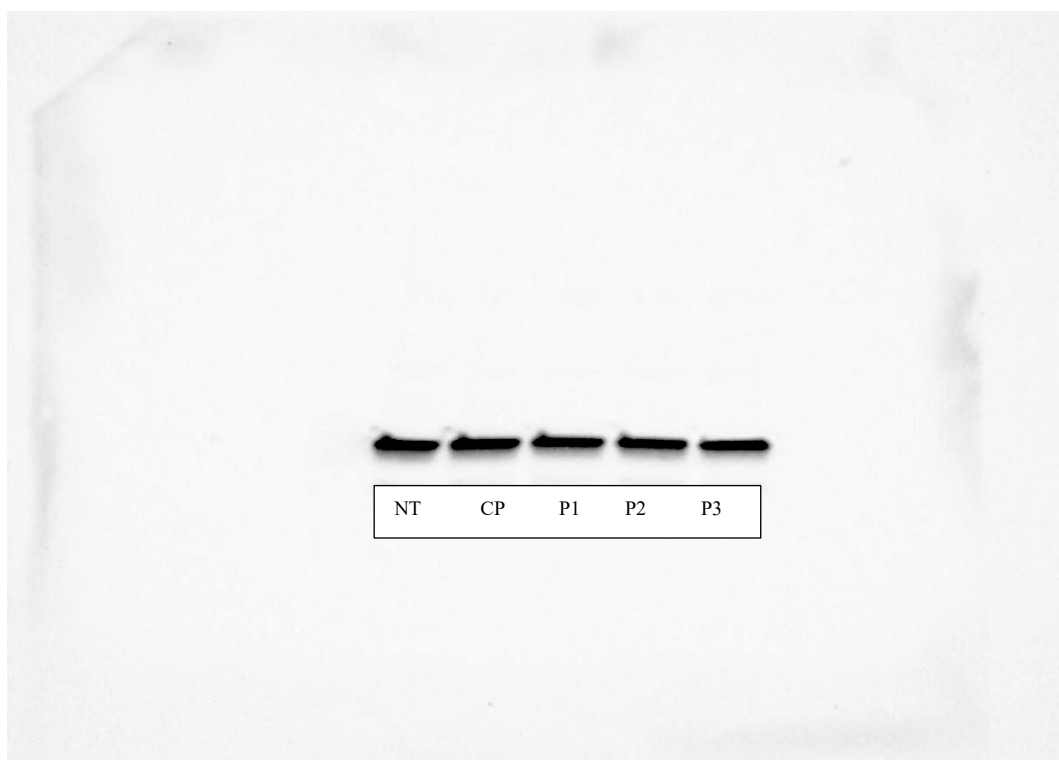


Figure S8: Gel/blots image of GAPDH protein in non-treated (NT) MCF-7 cells and treated with crude protein (CP) and fractions P1, P2, and P3.

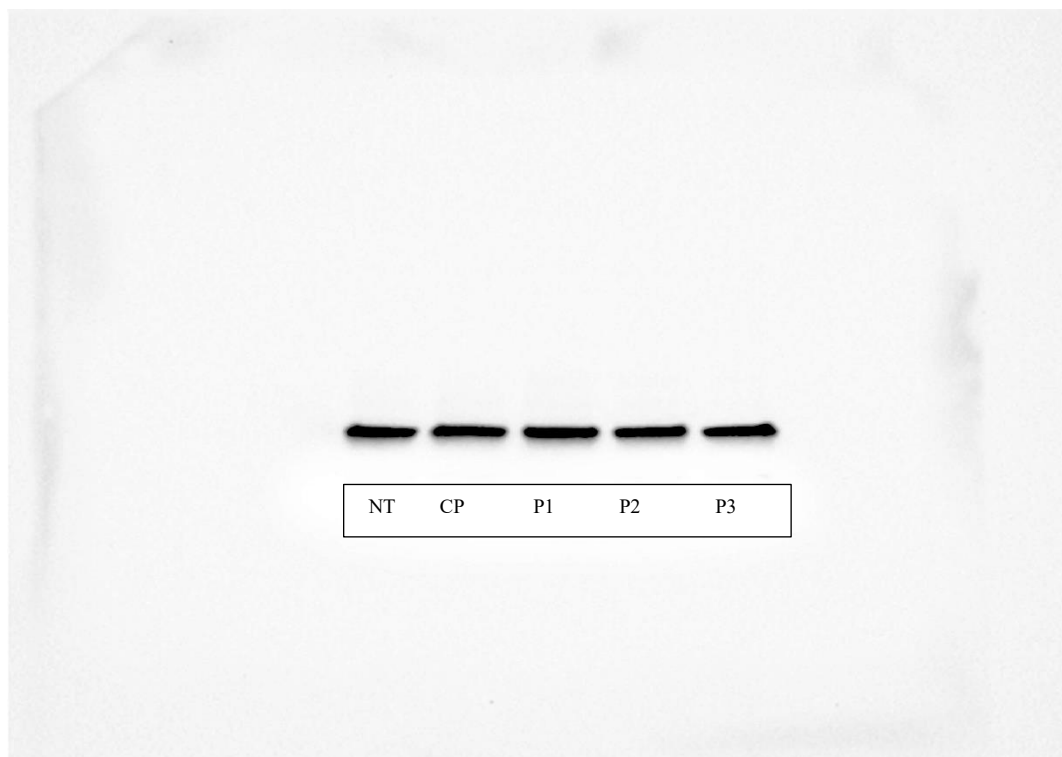


Figure S9: Gel/blots image of GAPDH protein in non-treated (NT) MCF-7 cells and treated with crude protein (CP) and fractions P1, P2, and P3.