

Display of *Bombyx mori* Alcohol Dehydrogenases on the *Bacillus subtilis* Spore Surface to Enhance Enzymatic Activity under Adverse Conditions

Nan Wang, Cheng Chang, Qin Yao, Guohui Li, Lvgaio Qin, Liang Chen, Keping Chen*

Institute of Life Sciences, Jiangsu University, Zhenjiang, Jiangsu Province, People's Republic of China

Abstract

Alcohol dehydrogenases (ADHs) are oxidoreductases catalyzing the reversible oxidation of alcohols to corresponding aldehydes or ketones accompanied by nicotinamide adenine dinucleotide (NAD) or nicotinamide adenine dinucleotide phosphate (NADP) as coenzyme. ADHs attract major scientific and industrial interest for the evolutionary perspectives, afforded by their wide occurrence in nature, and for their use in industrial synthesis. However, the low activity of ADHs under extremes of pH and temperature often limits their application. To obtain ADH with high activity, in this study, we used *Bombyx mori* alcohol dehydrogenases (*BmADH*) as foreign gene and constructed a recombinant integrative plasmid pJS700-*BmADH*. This pJS700-*BmADH* was transformed into *Bacillus subtilis* by double cross-over and produced an amylase inactivated mutant. The fusion protein containing BmADH was expressed on the spore surface and recognized by BmADH-specific antibody. We also assayed the alcohol dehydrogenase activity of the fusion protein together with the native BmADH at different pH and temperature levels, which indicated the recombinant enzyme exhibits activity over wider ranges of temperature and pH than its native form, perhaps due to the resistance properties of *B. subtilis* spores against adverse conditions.

Citation: Wang N, Chang C, Yao Q, Li G, Qin L, et al. (2011) Display of *Bombyx mori* Alcohol Dehydrogenases on the *Bacillus subtilis* Spore Surface to Enhance Enzymatic Activity under Adverse Conditions. PLoS ONE 6(6): e21454. doi:10.1371/journal.pone.0021454

Editor: Peter Setlow, University of Connecticut, United States of America

Received: March 21, 2011; **Accepted:** May 29, 2011; **Published:** June 29, 2011

Copyright: © 2011 Wang et al. This is an open-access article distributed under the terms of the Creative Commons Attribution License, which permits unrestricted use, distribution, and reproduction in any medium, provided the original author and source are credited.

Funding: This work was supported by grants from the Jiangsu Sci-Tech Support Project-Agriculture (No. BE2008379), the National Program of High-Tech Research and Development (863 High-Tech Program, No. 2008AA10Z145), and the National Natural Science Foundation (No. 30871826). The funders had no role in study design, data collection and analysis, decision to publish, or preparation of the manuscript.

Competing Interests: The authors have declared that no competing interests exist.

* E-mail: kpchen@ujs.edu.cn

Introduction

Alcohol dehydrogenases (ADH; EC 1.1.1.1) belong to the oxidoreductase family; a class of enzymes that catalyze the reversible oxidation of alcohols to corresponding aldehydes or ketones using NAD or NADP as coenzyme. ADHs are widely distributed in nature and have been found in species throughout the three domains of life, Archaea, Bacteria and Eukarya [1-4]. ADHs play important roles in a broad range of physiological process. Based on their catalytic activities, ADHs are supposed to participate in the metabolism of steroids, retinoids, lipid peroxidation products, ω -hydroxy fatty acids, xenobiotic alcohols and aldehydes [5]. However, many ADHs are generally susceptible to harsh conditions such as extremes of pH and temperature, which often hampers their industrial application [6]. Due to the ever-increasing industrial demands, microbial surface display of enzymes has been widely adopted as a promising technique for the improvement of conventional biocatalysts [7-9].

The gram-positive bacterium *Bacillus subtilis* has been extensively studied as a model prokaryotic system, which is not regarded as a pathogen but classified as a novel food currently being used as a probiotic for both human and animal consumption [10,11]. The *B. subtilis* spore offers unique resistance properties and can survive extremes of temperature, desiccation, exposure to solvents and other noxious chemicals. These attributes would make the spore an attractive vehicle for delivery of heterologous proteins that are

resistant to adverse environments. Additionally, three proteins in the spore coat, CotB, CotC and CotG, have been shown to be exposed on the outside and have been used as a novel system to display passenger proteins such as different antigens [12], enzymes [13] and bioactive molecules [14].

In this study, a mutant *B. subtilis* strain, which exhibited *Bombyx mori* alcohol dehydrogenase (BmADH) on the spore surface by fusion to the spore coat protein CotC, has been successfully constructed, expressed and identified by a BmADH-specific antibody. The ethanol dehydrogenase activity of the BmADH protein expressed on the spore surface was assayed under different pHs and temperatures and this enzyme's activity was compared with that of the native enzyme under the same conditions.

Methods

Materials

B. subtilis 168 (trp-) was obtained from Bacillus Genetic Stock Center, Department of Biochemistry, The Ohio State University. The expression vector pET-30a(+) and *Escherichia coli* strains DH5 α and BL21(DE3) were obtained from Novagen (CA, USA). Ex Taq polymerase, restriction enzymes, T4 DNA ligase and the subcloning vector pMD18-T were purchased from TaKaRa (Dalian, China). Chemicals are all from Sigma (MO, USA) or a domestic provider in China if not stated otherwise.

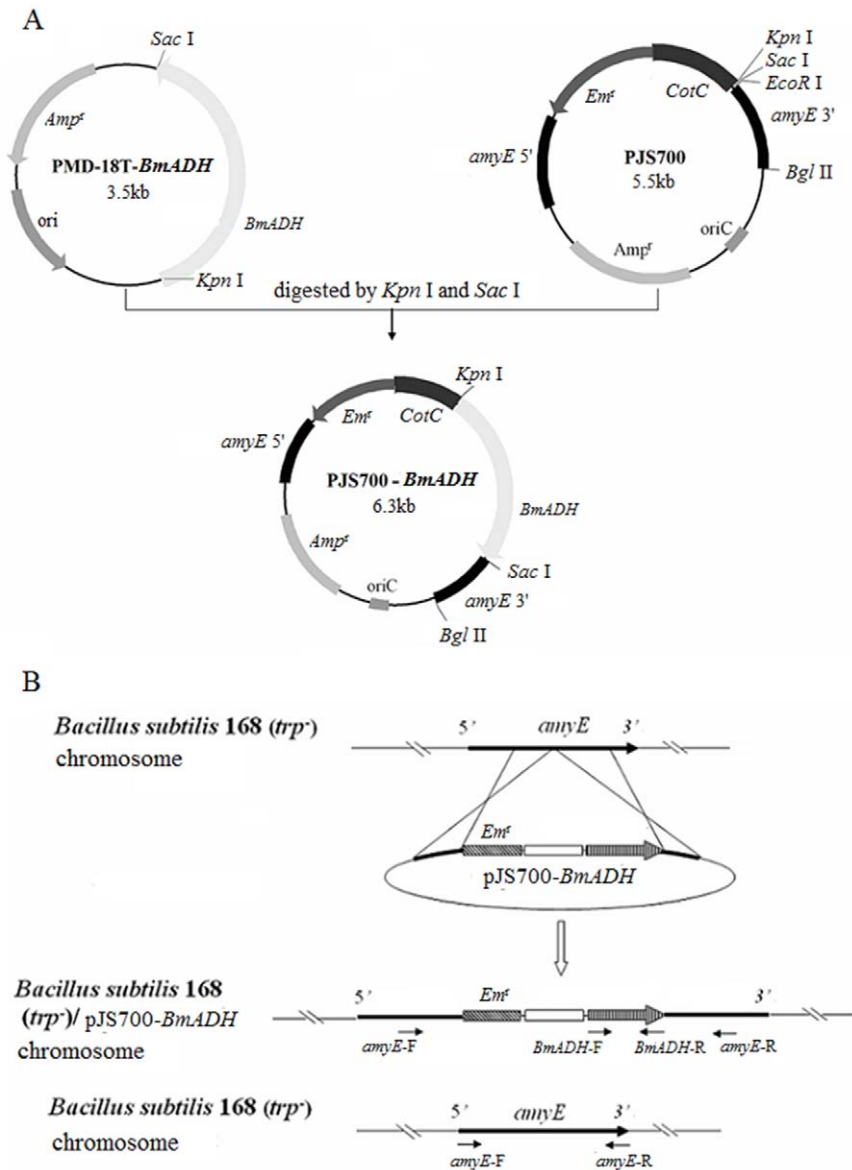


Figure 1. Cloning strategy. (A) The construction of integration plasmid pJS700-BmADH. The fragments *amyE* 5' and *amyE* 3' in plasmid are homologous to the upstream and downstream of the amylase gene in *B. subtilis* 168 (*trp⁻*), respectively; *Em^r*, erythromycin resistant site; *CotC*, a *B. subtilis* spore coat protein encoding gene. (B) The schematic integration of CotC-BmADH to *amyE* locus. Arrows indicate the positions of primer pairs used in the site-directed PCR for confirmation of the correct integration.

doi:10.1371/journal.pone.0021454.g001

Preparation and transformation of *B. subtilis* strain 168 (*trp⁻*) competent cells were performed as previously described [15].

Expression of BmADH in *E. coli* and preparation of the specific antibody

The BmADH specific primers, *BmADH*-F1: 5'-GGGGATC-CATGGCACCGGATTTCGTG-3' (*Bam* HI site is underlined), and *BmADH*-R1: 5'-CCCTCGAGCTATGTCTTGGAGAG-TATTTGGAAG-3' (*Xho* I site is underlined) were designed to amplify an 825 bp *BmADH* gene from a pool of silkworm cDNA. The PCR product was ligated into the pMD18-T vector and then subcloned into the pET-30a(+) expression vector and transformed into *E. coli* BL21 (DE3). *E. coli* cells containing pET30a-BmADH were grown to an optical density at about 0.6 at 600 nm and

induced by addition of 0.4 mM IPTG at 16°C for 20 hours to obtain soluble protein, and cells were harvested by centrifugation at 8,000 g for 15 min at 4°C. The soluble his-tagged protein was purified by a Ni-NTA column (Qiagen, German) following manufacturer's instruction. The recombinant BmADH present in the pellet of cell lysate was mixed with SDS sample buffer, boiled for 5 min and resolved on 15% SDS-polyacrylamide gels. The recombinant BmADH was excised and extracted from gel slices. The identity of the BmADH protein was confirmed by mass spectroscopic analysis and the purity was examined by a SDS-PAGE. The antiserum was raised in New Zealand white rabbits according to the method of Sambrook et al. using Freund's adjuvant [16]. All the procedures were in line with ethical standards for treatment of animals.

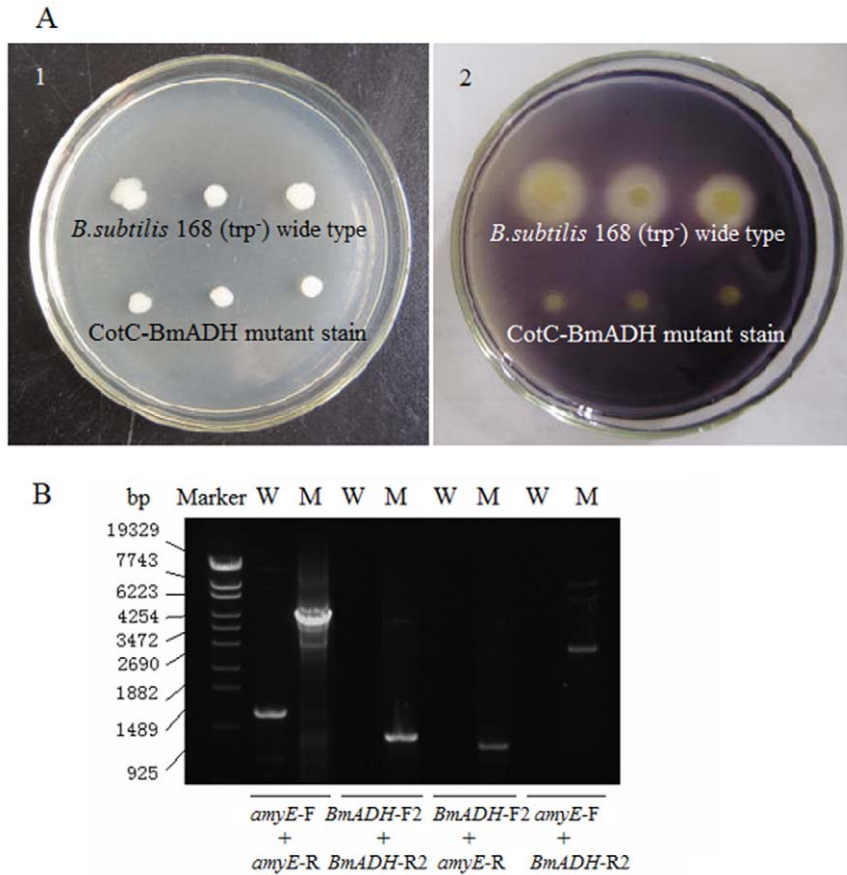


Figure 2. Identification of the mutant with CotC-BmADH integration at *amyE* locus. (A) Analysis of amylase activity. CotC-BmADH mutant strains and *B. subtilis* 168 (*trp*⁻) wide type grew on the starch-containing LB plate before (1) and after (2) being stained by iodine. The integration of CotC-BmADH might disrupt *amyE* and made the strain amylase deficient, while the white wide type strain showed a big white halo around colony due the secretion of amylase. (B) Site-directed PCR analysis using different primer pairs. Marker, λ DNA digested by *Eco*T14I; W: *B. subtilis* 168 (*trp*⁻) wide typ; M: CotC-BmADH mutant; primer pairs used in PCR are labeled below agarose gel. doi:10.1371/journal.pone.0021454.g002

Construction of plasmid pJS700-*BmADH*

To obtain an integration of the *CotC-BmADH* fusion gene at the *B. subtilis amyE*, a recombinant plasmid for double cross-over with *B. subtilis* chromosome was constructed. We amplified another 825 bp fragment from silkworm cDNA with primer pair *BmADH*-F2: 5'-GGGGTACCATGGCACCGGATTTCGTGAAGCG-

TT-3' (*Kpn* I site is underlined), and *BmADH*-R2: 5'-CGA-GCTCCTATGTCTTGGAGAGTATTTGGA-3' (*Sac* I site is underlined). The fragment between the *Kpn* I and *Sac* I sites containing the *BmADH* gene was cloned into vector pJS700, to generate the recombinant plasmid pJS700-*BmADH*, in which the upstream and downstream region of erythromycin (*Em*)-*CotC-BmADH* was homologous to *B. subtilis amyE*, as was verified by sequencing [17].

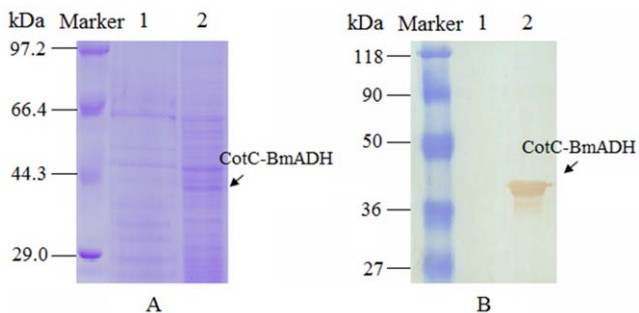


Figure 3. SDS-PAGE analysis of CotC-BmADH and Western blotting. (A) SDS-PAGE stained by coomassie-blue. (B) CotC-BmADH detected by BmADH specific antibody. Lane 1, *B. subtilis* 168 (*trp*⁻); lane 2, CotC-BmADH strain. doi:10.1371/journal.pone.0021454.g003

Plasmid pJS700-*BmADH* was digested with *Bgl* II, and the resulted linear fragment containing *Em-CotC-BmADH* gene was transformed into the *B. subtilis* strain 168 (*trp*⁻) competent cells. The transformed cells were incubated in 2 ml LB medium and cultured at 37°C overnight with vigorous shaking, following with sprayed onto LB plate containing 0.4 mg/ml erythromycin. Plates were incubated at 37°C overnight, colonies resistant to Em were selected, and a colony with *CotC-BmADH* integrated at the *B. subtilis amyE* locus was identified by analysis of amylase activity and then confirmed by PCR.

Screening of mutants with CotC-BmADH integrated at *amyE* locus

The integration of *CotC-BmADH* at *amyE* locus will disrupt *amyE* gene causing amylase-negative phenotype on LB plates containing 1% starch [15]. After incubation at 37°C overnight, the plates were stained by iodine to examine the amylase activity. A blue

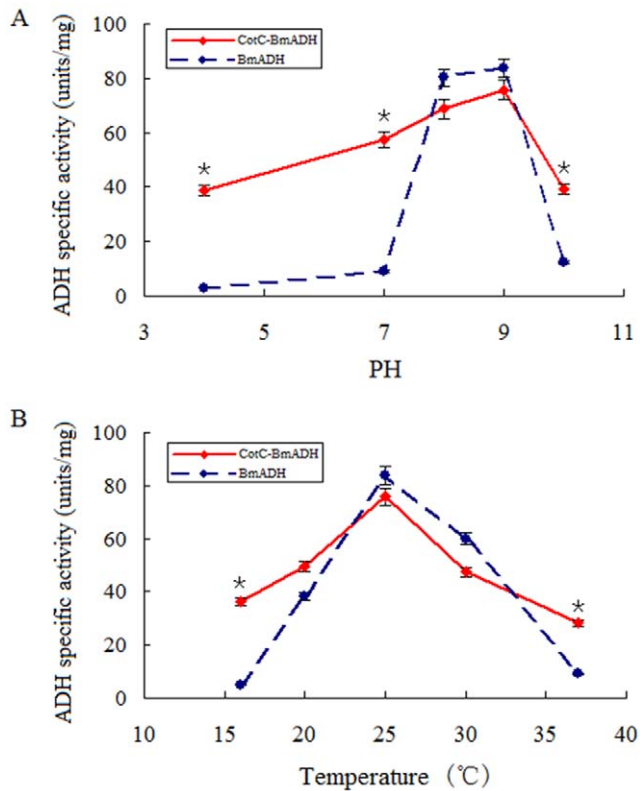


Figure 4. Alcohol dehydrogenase specific activity at different pHs (A) and temperatures (B). Solid line indicates CotC-BmADH; dotted line indicates the native BmADH. Mean \pm SD from three independent experiments are shown. *indicates the difference is significant ($P < 0.05$).

doi:10.1371/journal.pone.0021454.g004

color was produced by starch-iodine reaction in the presence of CotC-BmADH fusion in the *B. subtilis* chromosome. However, no blue color was observed at the *B. subtilis* 168 (trp-) control when iodine was added, since the expression of *amyE* resulted in hydrolysis of the starch in the plate.

Chromosomal DNA was made from both of the *B. subtilis* 168 (trp-) control and CotC-BmADH transformants for site-directed PCR. Primers *amyE*-F: 5'-GAGATCTCATTGCTCGGGCTG-TATGACTGG-3' and *amyE*-R: 5'-GTTACACCATCACTGTT-CGTTCC-3' will amplify a 1098 bp wild-type fragment and a 4.5 kb integrated fragment. Primer pair *BmADH*-F2 and *BmADH*-R2 was used to detect the correct insertion of the *BmADH* gene.

Expression of CotC-BmADH on *B. subtilis* spore surface

Sporulation of wild type *B. subtilis* 168 (trp-) and recombinant strain CotC-BmADH was induced in Difco sporulation medium

(DSM) by the exhaustion method as previously described [18]. Cultures were harvested 48 h after the initiation of sporulation. Spores were collected, washed several times, and purified by lysosome treatment as described by Nicholson and Setlow to break any residual sporulating cells [18]. Spore coat proteins in suspensions at high density ($>1 \times 10^{10}$ spores/ml) were extracted from *B. subtilis* 168 (trp-) spores and the CotC-BmADH spores using an SDS-DTT extraction buffer as previously described [15].

SDS-PAGE and western blotting

Extracted coat proteins were mixed with SDS-PAGE loading buffer and run on a 12% polyacrylamide gel at room temperature. Electrophoresis was at 70 V for 30 min and then at 120 V for 120 min. The gel was stained with 0.25% Coomassie blue R-250 for 3 h and then destained for 6 h using a mixture of 10% acetic acid and 5% ethanol. To confirm that BmADH was expressed on the *B. subtilis* spore surface, the proteins in the gel were transferred to a polyvinylidene fluoride (PVDF) membrane (Millipore) for western blotting using previously prepared BmADH-specific antibody at a dilution of 1:1000. Immunoreactive proteins were visualized using goat anti-rabbit IgG antibody conjugated with peroxidase as described [19].

Enzymatic activity assay

The catalytic activity of recombinant CotC-BmADH protein was assayed spectrophotometrically by measuring the increase in absorbance at 340 nm following the reduction of NAD^+ to NADH in a solution containing ethanol as the substrate as described by Oudman *et al.* [20]. Briefly, a 3 ml reaction buffer (50 mM NaOH/Glycine buffer, pH 10.0, 0.67 M ethanol, 8 mM NAD^+) was incubated at 25°C, and the reaction was initiated by adding 0.1 ml of spore suspensions. The supernatant of the reaction solution was clarified by centrifugation (12,000 g, 4°C, 30 s) for spectrophotometric analysis. The increase at A_{340} in the initial 10 minutes was recorded. The increase in A_{340} for reactions without spores was used as the blank. An extinction coefficient of $6.22 \text{ mM}^{-1} \text{ cm}^{-1}$ for NADH was used to calculate enzyme activity [21]. One unit of dehydrogenase activity is defined as 1 $\mu\text{mol NAD}^+$ reduced per min. The enzyme specific activity calculation formula is as following: $(\Delta A_{340} \times V) / (6.22 \times b \times W)$, where ΔA_{340} is the change in absorbance at 340 nm per minute, V is the final reaction volume, b is the light path, and W is the amount of protein in the reaction system. The concentration of extracted proteins was measured using the Bio-Rad DC Protein Assay kit. Spores of *B. subtilis* 168 (trp-) were used as negative control. The enzymatic activity was measured three times with independent samples.

Alcohol dehydrogenase specific activity at different pH levels was determined by performing standard enzyme assay at various pH levels ranging from 4.0 to 10.0. The following 0.1 M buffer systems of varying pH, but fixed ionic strength, were used: acetate buffer (NaAc-HAc) for pH 4.0; phosphate buffer (NaH_2PO_4-

Table 1. Alcohol dehydrogenase specific activities at different pHs.

protein samples	pH				
	4	7	8	9	10
BmADH (units/mg protein)	3.05 \pm 0.35	9.14 \pm 0.82	80.22 \pm 4.59	83.77 \pm 3.27	12.23 \pm 1.37
CotC-BmADH (units/mg protein)	38.64 \pm 1.14*	57.58 \pm 2.38*	68.72 \pm 3.29	75.82 \pm 0.82	39.36 \pm 3.82*

*indicates that the difference is significant ($P < 0.05$).

Mean \pm SD from three independent experiments are shown.

doi:10.1371/journal.pone.0021454.t001

Table 2. Alcohol dehydrogenase specific activities at different temperatures.

protein samples	Temperature (°C)				
	16	20	25	30	37
BmADH (units/mg protein)	5.08±0.08	38.07±1.57	83.77±5.83	60.00±3.30	9.14±1.60
CotC-BmADH (units/mg protein)	36.35±1.15*	49.60±2.37	75.82±5.42	47.32±1.78	28.24±1.16*

*indicates that the difference is significant ($P < 0.05$).

Mean \pm SD from three independent experiments are shown.

doi:10.1371/journal.pone.0021454.t002

Na_2HPO_4) for pH 7.0; NaOH/Glycine buffer for pH 8.0, 9.0 and 10.0.

Alcohol dehydrogenase specific activity at different temperature was determined by performing standard enzyme assays for 10 min at temperatures of 16, 20, 25, 30, and 37°C.

To verify the thermal stability of the native BmADH and spore-displayed CotC-BmADH, the two proteins were incubated respectively at 37°C for 30 min, and then assayed under optimal conditions. The relative remained activity was calculated by comparison with the activity of the untreated proteins.

Statistical analysis

The enzymatic activity difference between the native BmADH and CotC-BmADH was analyzed by t-test with a significance level of $\alpha = 0.05$ (Microsoft Excell in Office 97). All values are expressed as mean value \pm standard deviation of three independent experiments.

Results

Construction of integrative vector containing *CotC-BmADH* gene

The strategy to obtain recombinant *B. subtilis* spores expressing BmADH on their surface was based on (i) use of the *CotC* gene and its promoter for the construction of translational fusions and on (ii) chromosomal integration of the *CotC-BmADH* gene fusions into the coding sequence of the *amyE* gene [15]. The *CotC-BmADH* gene was obtained by cloning the *BmADH* gene at the 3' end of the 201-

bp-*CotC* open reading frame carried by the integrative vector pJS700 (Fig. 1A). The fusion was integrated into the *B. subtilis* chromosome at the *amyE* locus by a double cross-over event (Fig. 1B).

Identification of *CotC-BmADH* integrated in *B. subtilis* chromosome

Amylase activity assay was used to identify *CotC-BmADH* integration mutants. The integration of *CotC-BmADH* at *amyE* locus disrupted the production of amylase, as a result no white halo was observed around the colony on a starch-containing plate stained by iodine, but the control strain showed a big white halo around the colony due to the secretion of amylase (Fig. 2A). The disruption of *amyE* was further confirmed by PCR with different primer pairs (Fig. 2B). Primer pair *amyE-F/amyE-R* produced a 4.5 kb fragment from the *CotC-BmADH* integrated chromosome, in comparison with a 1098 bp fragment from the *B. subtilis* 168 (trp-) DNA. In addition, in the *CotC-BmADH* integrated chromosome, primer pairs *BmADH-F/BmADH-R*, *BmADH-F/amyE-R*, *amyE-F/BmADH-R* produced fragments around 825 bp, 700 bp, 2650 bp, respectively, but gave no PCR product with 168 (trp-) DNA.

Surface display of BmADH on the recombinant spores

To confirm that BmADH was expressed on the *B. subtilis* spore surface, approximate 5 μg coat proteins were loaded to perform SDS-PAGE analysis, which showed a distinctive protein band weights about 40 kDa (Fig. 3A). Because the *CotC* gene of *B. subtilis* encodes a 66 amino acid polypeptide (CotC) with a predicted molecular mass of 8.8 kDa [22], and the 825 bp ORF of BmADH encodes a 275 amino acid protein with a predicted molecular mass of 30 kDa, the SDS-PAGE analysis suggested that the recombinant fusion protein was expressed with expected molecular mass.

The expression of CotC-BmADH was confirmed by Western blotting with previously prepared polyclonal antibody. A 40 kDa band was detected in the extracts from recombinant spores, while no similar band in the control lane was detected, indicating the presence of the CotC-BmADH fusion protein on the spore surface (Fig. 3B).

Effect of pH and temperature on enzyme activity

By measuring the alcohol dehydrogenase specific activity of both CotC-BmADH and the native BmADH under standard enzyme assay conditions at various pH levels, we found that the spore-displayed enzyme exhibited significant higher specific activity at pH 4.0, 7.0 and 10.0 than that of the native enzyme ($P < 0.05$), which indicated that the spore-displayed enzyme retained activity in a wider range of pH than the native protein (Fig. 4A, Table 1).

By measuring the alcohol dehydrogenase specific activity of both CotC-BmADH and the native BmADH under standard

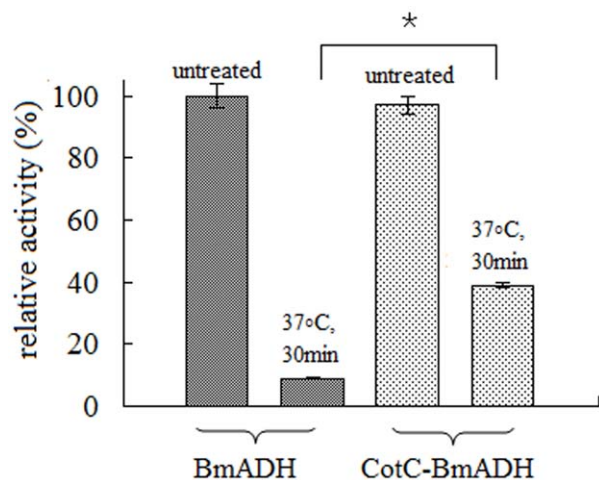


Figure 5. Relative remained activity of BmADH and CotC-BmADH after incubation at 37°C for 30 min. The activity was assayed at pH 9.0, 25°C. *indicates the difference is significant ($P < 0.05$). doi:10.1371/journal.pone.0021454.g005

enzyme assay conditions at various temperatures, we found that the spore-displayed enzyme exhibited significant higher specific activity at 16°C and 37°C than that of the native enzyme ($P < 0.05$), which indicated that the CotC-BmADH preserved activity in a wider range of temperature than the native protein (Fig. 4B, Table 2).

In addition, the protein stability of CotC-BmADH was compared with that of the native BmADH at 37°C. The catalytic activities of CotC-BmADH and BmADH were measured at optimal condition after incubation of protein at 37°C for 30 min. The measurement revealed that the spore-displayed protein retained approximate 40% of its original activity, while 10% activity was remained for the native BmADH (Fig. 5), which suggesting that the fusion of BmADH to *B. subtilis* spore protected the protein from the irreversible destructive conformational change at 37°C.

Discussion

The *Bacillus subtilis* spore is encased within a complex multilayered protein structure known as the coat, whose role is to protect the spore against bactericidal enzymes and chemicals, and to influence the spore's ability to germinate in response to appropriate germinants. The coat is composed of more than 20 polypeptides, several of which have been studied, and their structural genes (*cot* genes) have been identified [23,24]. The development of a spore surface display system was initially based on the use of CotB, a *B. subtilis* spore coat component, as a fusion partner to express a highly immunogenic tetanus toxin fragment C (TTFC) on the spore surface [25]. More recently, another coat component, CotC, was also tested as fusion partner for the expression of TTFC and of the B subunit of the heatlabile toxin of *E. coli* (LTB) [26,27]. In this study, we displayed BmADH on the *B. subtilis* Spore surface by fusing BmADH to the C-end of CotC protein, and the fusion protein exhibited catalytic activity over wider ranges of pH and temperature than its native

form. This improvement may be contributed by the resistant properties of *B. subtilis* spore, which provided protection to the bioactive molecules against harsh conditions.

The alcohol dehydrogenase activity assay revealed that the highest activities of the modified BmADH and the native BmADH were at pH 8.0–9.0. It is worth mentioning that this result coincides with the data in the literature regarding the optimum pH for alcohol dehydrogenase [28,29]. In addition, the optimum temperature of 25°C for BmADHs was consistent with the body temperature of silkworm. Moreover, CotC-BmADH was able to catalyze in extremes of pH and temperature, while the activity of BmADH decreased dramatically out of the optimal range. However, we noticed that the maximum specific activity of the fusion protein was a little lower than that of the native protein. This might be caused by the larger molecular mass of CotC-BmADH, as well as other proteins in the spore.

In conclusion, this study has provided a detailed picture of the molecular strategy that allows environmental susceptible enzymes to survive adverse conditions by forming robust *B. subtilis* spores. The results showed our method could yield enzyme with higher stability and activity than its native form, and suggested this method could be expanded to the industrial application of enzymes.

Acknowledgments

The plasmid pJS700 was kindly donated by Dr. Degang Ning (School of the Environment, Jiangsu University). We thank Dr. Haifeng Shi for help in writing and technical support.

Author Contributions

Conceived and designed the experiments: NW GHL KPC. Performed the experiments: NW CC. Analyzed the data: NW CC LGQ. Contributed reagents/materials/analysis tools: KPC QY LC. Wrote the paper: NW.

References

- Branden C, Jornvall H, Eklund H, Furugren B (1975) Alcohol Dehydrogenases. In: Boyer PD, Krebs EG, eds. The Enzymes, 3 ed New York: Academic Press. pp 103–190.
- Vonwartburg JP, Bethune JL, Vallee BL (1964) Human Liver-Alcohol Dehydrogenase. Kinetic and Physicochemical Properties. *Biochemistry* 3: 1775–1782.
- Rella R, Raia CA, Pensa M, Pisani FM, Gambacorta A, et al. (1987) A novel archaeobacterial NAD⁺-dependent alcohol dehydrogenase. Purification and properties. *Eur J Biochem* 167: 475–479.
- Reid MF, Fewson CA (1994) Molecular characterization of microbial alcohol dehydrogenases. *Crit Rev Microbiol* 20: 13–56.
- Dolega A (2010) Alcohol dehydrogenase and its simple inorganic models. *Coordination Chemistry Reviews* 254: 916–937.
- Hirakawa H, Kamiya N, Kawarabayashi Y, Nagamune T (2004) Properties of an alcohol dehydrogenase from the hyperthermophilic archaeon *Aeropyrum pernix* K1. *J Biosci Bioeng* 97: 202–206.
- Chen W, Georgiou G (2002) Cell-Surface display of heterologous proteins: From high-throughput screening to environmental applications. *Biotechnol Bioeng* 79: 496–503.
- Jung HC, Lebeault JM, Pan JG (1998) Surface display of *Zymomonas mobilis* levansucrase by using the ice-nucleation protein of *Pseudomonas syringae*. *Nature biotechnology* 16: 576–580.
- Wernerus H, Stahl S (2004) Biotechnological applications for surface-engineered bacteria. *Biotechnol Appl Biochem* 40: 209–228.
- Mazza P (1994) The use of *Bacillus subtilis* as an anti-diarrhoeal microorganism. *Boll Chim Farm* 133: 3–18.
- Huang JM, La Ragione RM, Cooley WA, Todryk S, Cutting SM (2008) Cytoplasmic delivery of antigens, by *Bacillus subtilis* enhances Th1 responses. *Vaccine* 26: 6043–6052.
- Oggioni MR, Ciabattini A, Cuppone AM, Pozzi G (2003) *Bacillus* spores for vaccine delivery. *Vaccine* 21(Suppl 2): S96–101.
- Kim J, Roh C, Lee C, Kyung D, Choi S, et al. (2007) Bacterial surface display of GFP(uv) on *Bacillus subtilis* spores. *J Microbiol Biotechnol* 17: 677–680.
- Kim J, Lee C, Kim B (2005) Spore-displayed streptavidin: A live diagnostic tool in biotechnology. *Biochemical and Biophysical Research Communications* 331: 210–214.
- Cutting S, Vander-Horn P (1990) Genetic analysis. In: Harwood CR, Cutting SM, eds. *Molecular biological methods for Bacillus*. England: John Wiley & Sons, Ltd. pp 27–74.
- Sambrook J (2001) *Molecular Cloning: A Laboratory Manual*. New York: Cold Spring Harbor Laboratory Press, 2344 p.
- Li Q, Ning D, Wu C (2010) Surface display of GFP using CotX as a molecular vector on *Bacillus subtilis* spores. *Chinese Journal of Biotechnology* 26: 264–269.
- Nicholson W, Setlow P (1990) Sporulation, germination and outgrowth. In: Harwood C, Cutting S, eds. *Molecular biological methods for Bacillus*. Chichester: Wiley. pp 391–450.
- Huo J, Shi H, Yao Q, Chen H, Wang L, et al. (2010) Cloning and purification of recombinant silkworm dihydroloipoamide dehydrogenase expressed in *Escherichia coli*. *Protein Expr Purif* 72: 95–100.
- Oudman L, Van Delden W, Kamping A, Bijlsma R (1991) Polymorphism at the *Adh* and alpha *Gpdh* loci in *Drosophila melanogaster*: effects of rearing temperature on developmental rate, body weight, and some biochemical parameters. *Heredity* 67: 103–115.
- Zhang ZH, Kang YM, Yu Y, Wei SG, Schmidt TJ, et al. (2006) 11beta-hydroxysteroid dehydrogenase type 2 activity in hypothalamic paraventricular nucleus modulates sympathetic excitation. *Hypertension* 48: 127–133.
- Donovan W, Zheng LB, Sandman K, Losick R (1987) Genes encoding spore coat polypeptides from *Bacillus subtilis*. *J Mol Biol* 196: 1–10.
- Isticato R, Esposito G, Zilha R, Nolasco S, Cangiano G, et al. (2004) Assembly of multiple CotC forms into the *Bacillus subtilis* spore coat. *Journal of Bacteriology* 186: 1129–1135.
- Henriques AO, Moran CPJ (2000) Structure and assembly of the bacterial endospore coat. *Methods* 20: 95–110.
- Isticato R, Cangiano G, Tran HT, Ciabattini A, Medaglini D, et al. (2001) Surface display of recombinant proteins on *Bacillus subtilis* spores. *J Bacteriol* 183: 6294–6301.

26. Mauriello EMF, Duc LH, Isticato R, Cangiano G, Hong HA, et al. (2004) Display of heterologous antigens on the *Bacillus subtilis* spore coat using CotC as a fusion partner. *Vaccine* 22: 1177–1187.
27. Barak I, Ricca E, Cutting SM (2005) From fundamental studies of sporulation to applied spore research. *Mol Microbiol* 55: 330–338.
28. Racker E (1955) Alcohol dehydrogenase from baker's yeast. In: Colowich S, Kapan N, eds. *Methods in enzymology*. New York: Elsevier Academic Press. pp 500–503.
29. Okuma Y, Ito Y, Endo A (1991) Purification and properties of alcohol dehydrogenase from the acid- and ethanol-tolerant yeast *Candida solicola*. *J Ferment Bioeng* 71: 309–312.