

## ORIGINAL ARTICLE

# Genetic differentiation and admixture between sibling allopolyploids in the *Dactylorhiza majalis* complex

Updated online 7 December 2016: This article was originally published under a CC BY-NC-SA 4.0 license, but has now been made available under a CC BY 4.0 licence. The PDF and HTML versions of the paper have been modified accordingly.

F Balao<sup>1,3</sup>, M Tannhäuser<sup>1</sup>, MT Lorenzo<sup>1</sup>, M Hedrén<sup>2</sup> and O Paun<sup>1</sup>

Allopolyploidization often happens recurrently, but the evolutionary significance of its iterative nature is not yet fully understood. Of particular interest are the gene flow dynamics and the mechanisms that allow young sibling polyploids to remain distinct while sharing the same ploidy, heritage and overlapping distribution areas. By using eight highly variable nuclear microsatellites, newly reported here, we investigate the patterns of divergence and gene flow between 386 polyploid and 42 diploid individuals, representing the sibling allopolyploids *Dactylorhiza majalis* s.s. and *D. traunsteineri* s.l. and their parents at localities across Europe. We make use in our inference of the distinct distribution ranges of the polyploids, including areas in which they are sympatric (that is, the Alps) or allopatric (for example, Pyrenees with *D. majalis* only and Britain with *D. traunsteineri* only). Our results show a phylogeographic signal, but no clear genetic differentiation between the allopolyploids, despite the visible phenotypic divergence between them. The results indicate that gene flow between sibling *Dactylorhiza* allopolyploids is frequent in sympatry, with potential implications for the genetic patterns across their entire distribution range. Limited interploidal introgression is also evidenced, in particular between *D. incarnata* and *D. traunsteineri*. Altogether the allopolyploid genomes appear to be porous for introgression from related diploids and polyploids. We conclude that the observed phenotypic divergence between *D. majalis* and *D. traunsteineri* is maintained by strong divergent selection on specific genomic areas with strong penetrance, but which are short enough to remain undetected by genotyping dispersed neutral markers. *Heredity* (2016) **116**, 351–361; doi:10.1038/hdy.2015.98; published online 25 November 2015

## INTRODUCTION

Allopolyploidization is the main conduit of reticulate evolution in angiosperms, bringing together two or more diverged genomes into a single nucleus (Comai *et al.*, 2003; Otto, 2007; Soltis and Soltis, 2009). The novel genomic status instantly triggers genetic and epigenetic responses, mostly of a stochastic nature (Paun *et al.*, 2007; Madlung and Wendel, 2013). These genomic alterations can have dramatic phenotypic implications, including reshaping the ecological attributes of the polyploid individuals (Soltis *et al.*, 2010). Upon formation, neopolyploids are strongly filtered by natural selection towards stabilizing meiosis and towards increased fitness in their respective habitats. This is an important point, as allopolyploids often form repeatedly between different populations of the same parental species, potentially resulting in an array of substantially different lineages (Soltis and Soltis, 2009) due to (i) origins from different parental genotypes, (ii) chance genomic alterations after allopolyploidization, (iii) different selection pressures that the neopolyploids may experience and/or (iv) difference in extent/direction of backcrossing towards diploid parental species. However, the long-term evolutionary significance of recurrent allopolyploidization remains to date not completely understood (Doyle *et al.*, 2004; Meimberg *et al.*, 2009; Soltis *et al.*, 2010).

Multiple origins intuitively increase the probability that the polyploid cytotype will succeed to become established. In addition, they create the opportunity for increased genetic and ecological breadth of

the polyploid cytotype. Under isolation, sibling allopolyploids could in time evolve as independent species (Perrie *et al.*, 2010; Chester *et al.*, 2012; Levin, 2013). However, the distribution of sibling allopolyploid lineages may partly overlap and gene flow is likely to occur ('lineage recombination' *sensu*, Doyle *et al.*, 1999). Gene flow between sibling allopolyploids may augment their genetic variability and further enhance the evolutionary success of sexual allopolyploid species (Meimberg *et al.*, 2009; Modliszewski and Willis, 2012). On the other hand, lineage recombination could result in homogenization of sibling allopolyploids, counteracting diversification.

For the sibling allopolyploids to survive as independent units, it appears therefore important that some degree of reproductive isolation among them develops early. Mating barriers could ensue as chance alternative silencing or physical loss of homeologs, resulting in hybrid lethality or sterility ('Oka model'; Oka, 1953; Lynch and Force, 2000; Bikard *et al.*, 2009). Furthermore, mechanisms such as 'divergence hitchhiking' and 'genome hitchhiking' could act and allow reproductive isolation to develop in time despite genome homogenization by gene flow (Via, 2012; Feder *et al.*, 2012). From an evolutionary point of view, such sibling allopolyploids could be compared with sister taxa evolving by speciation-with-gene-flow (Nosil *et al.*, 2009). Clearly, a proper understanding of gene flow dynamics between young sibling polyploids is a key to reveal the evolutionary significance of the iterative nature of polyploidization.

<sup>1</sup>Department of Botany and Biodiversity Research, University of Vienna, Vienna, Austria and <sup>2</sup>Department of Biology, Lund University, Lund, Sweden

<sup>3</sup>Current address: Biología Vegetal y Ecología, University of Sevilla, Sevilla, Spain.

Correspondence: Dr F Balao or Professor O Paun, Department of Botany and Biodiversity Research, University of Vienna, Rennweg 14, Vienna 1030, Austria.

E-mail: fbalao@us.es or ovidiu.paun@univie.ac.at

Received 11 March 2015; revised 17 October 2015; accepted 20 October 2015; published online 25 November 2015

An excellent system to study the early evolution of natural sibling allopolyploids is provided by the *Dactylorhiza majalis* complex (Orchidaceae). *Dactylorhiza* constitutes an unusually dynamic system of hybridization between diploids, coupled with polyploid formation. Allotetraploid taxa ( $2n = 80$ ) of the *D. majalis* complex (Hedré, 1996) have arisen by multiple, independent origins from unidirectional hybridization between the same diploid parental lineages (*D. fuchsii*, always acting as the maternal parent, and *D. incarnata*; both  $2n = 40$ ; Pillon *et al.*, 2007). Hybridization and introgression between independently derived allotetraploids has been frequently reported (for example, Hedré, 1996, 2003; Hedré *et al.*, 2001, 2011). It is therefore of interest to understand the mechanisms that allow these young sibling allopolyploids to remain distinct over time, even in sympatry, while sharing the same genetic heritage and ploidy (Paun *et al.*, 2011).

Many studies of allopolyploid evolution have previously considered either old polyploid complexes in which parental lineages have been lost and the allopolyploid derivatives have acquired distinct molecular profiles by extensive post-polyploidization evolution (for example, Shaked *et al.*, 2001; Chaudhary *et al.*, 2009; Marcussen *et al.*, 2010), or else considered young complexes in which no/little intermixing of independently derived neopolyploids have yet occurred (for example, Soltis *et al.*, 2004). In the present study, we investigate the genetic structure and the patterns of gene flow between two medium-aged *Dactylorhiza* allopolyploids at different localities across Europe by using highly-polymorphic simple sequence repeats markers (SSR or microsatellites) as a basis for discussing the possible outcomes of admixture between sibling allopolyploids. Our study addresses the following specific questions: (1) Are the sibling *Dactylorhiza* allopolyploids genetically differentiated? (2) Are there signals of gene flow between the sibling allopolyploids and if so, at what scale of geographic distances does this happen? and (3) Are there signals of backcrossing among polyploids and their diploid parental species?

## MATERIALS AND METHODS

### Study system

We focus here on two widespread allotetraploids of the complex, *Dactylorhiza majalis* s.s. (Rchb.) P.F. Hunt & Summerh. and *D. traunsteineri* s.l. (Saut. ex Rchb.) Soó, the latter including *D. ebudensis* (Wiefelspütz ex R.M. Bateman & Denholm) P. Delforge, following Bateman and Denholm (2012), and *D. lapponica* (Laest.) Soó. In their characteristic forms, the species have distinct morphology, ecology and geographic distribution (Paun *et al.*, 2010). They can occur in close proximity (in particular in the Alps), but in different microhabitats still separated by at least 100 m. *Dactylorhiza majalis* s.s. has a wider ecological tolerance and grows in moist meadows on calcareous ground kept open by grazing or mowing. It is characterized by robust and broad-leaved plants with a dense, many-flowered inflorescence (Baumann and Künkele, 1988; Delforge, 2001). Its distribution reaches from the Pyrenees, northern Italy and northern Balkans in the south to Denmark and southernmost Sweden in the north and from France in the west to Poland and the Baltic states in the east (Hultén and Fries, 1986, and revised according to unpublished data). *Dactylorhiza traunsteineri* is less competitive and grows in calcareous fens, typically on naturally open sites associated with seepage zones, but it also benefits from grazing or mowing (Kull and Hutchings, 2006). It is slender and usually low-grown with narrow leaves and a lax few-flowered inflorescence (Soó, 1980; Baumann and Künkele, 1988; Delforge, 2001). It is relatively widespread in north-western and northern Europe outside the range of *D. majalis*, but it has more of a localized and disjunct distribution in Central Europe (Hultén and Fries, 1986).

Molecular studies suggest that the two allotetraploids may have been independently formed at different times during the last part of the Quaternary (for example, Pillon *et al.*, 2007). *Dactylorhiza majalis* appears to be older and to have survived in one or few neighbouring refugia in Central Europe during the

last ice age. *Dactylorhiza traunsteineri* is more heterogeneous and may include younger elements than *D. majalis*. The wide and scattered distribution of *D. traunsteineri* and the regional mosaic of plastid DNA variants in the species suggest that it is formed shortly after the last glaciation, or that it survived the last ice age in several periglacial refugia, some also at relatively high latitudes (Nordström and Hedré, 2009).

The two species contain a number of distinct plastid DNA variants not found in present-day representatives of the maternal *D. fuchsii* lineage (Pillon *et al.*, 2007; Nordström and Hedré, 2008, 2009). Accordingly, some degree of shared evolutionary history of the two allopolyploids is suggested as several of these polyploid-specific haplotypes are widespread and common in both tetraploid species. In addition, no clear-cut genetic differentiation among the allopolyploids of the *Dactylorhiza majalis* complex has been uncovered by investigating ITS sequences (Pillon *et al.*, 2007) and amplified fragment length polymorphism (Hedré *et al.*, 2001). However, recent studies using cDNA-amplified fragment length polymorphisms (Paun *et al.*, 2011) and methylation-sensitive amplified fragment length polymorphisms (Paun *et al.*, 2010) indicated that *Dactylorhiza majalis* and *D. traunsteineri* show some distinct epigenetic and gene expression patterns, most probably as a result of divergent selection acting on the variation released with the allopolyploidization events (Paun *et al.*, 2010, 2011), but it is still an open question whether any genomic differentiation matching these divergent patterns in gene expression is to be found. As *Dactylorhiza* allopolyploids are at a relatively early stage of evolution (Devos *et al.*, 2006; Pillon *et al.*, 2007; Nordström and Hedré, 2009) but feature broad and partly overlapping distribution ranges, we hypothesize that extensive lineage recombination involving occasional interbreeding between the two sibling allopolyploids has taken place in the recent past, on the background of a limited genetic divergence between them.

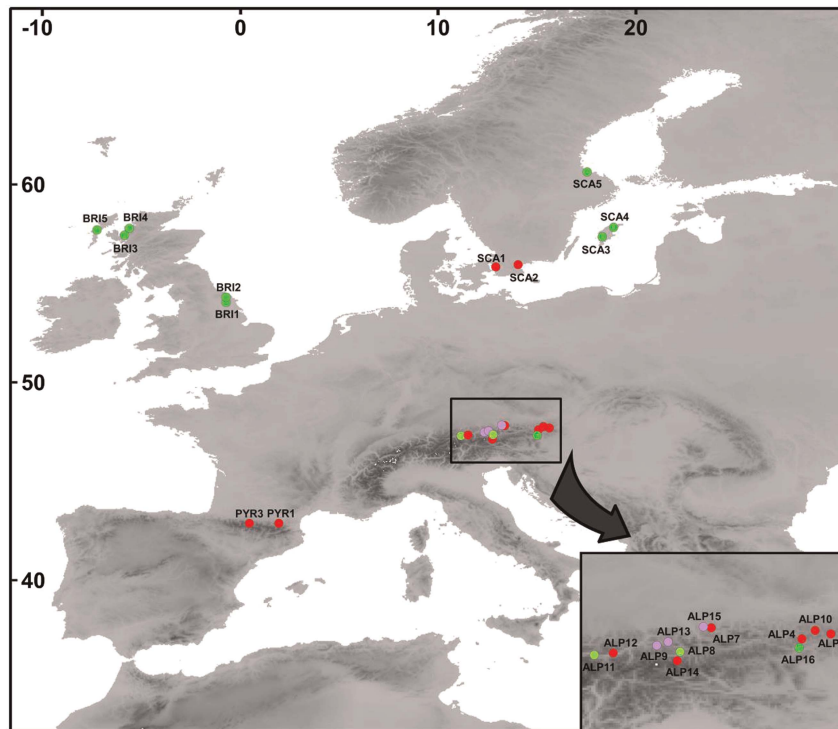
*Dactylorhiza* diploids and polyploids are mostly bumblebee-pollinated by food deception (Sletvold *et al.*, 2010), rendering pollinator-mediated gene flow between patches higher than in rewarding orchids (Cozzolino and Widmer, 2005). Still, several studies directly monitoring orchid pollen dispersal could only rarely show pollen transport distances larger than 50 m (Kropf and Renner, 2008 and references therein). The dust-like seeds are wind dispersed (Arditti and Ghani, 2000), and, as in other orchids (Squirrel *et al.*, 2001; Cozzolino *et al.*, 2003), a proportion of the overall gene flow is likely to be due to seed dispersal.

### Plant sampling

During the summers of 2011–2013, we sampled 386 polyploid individual plants from the *Dactylorhiza majalis* complex, including the sibling allotetraploids *D. traunsteineri* s.l. and *D. majalis* s.s. We studied a total of 24 sampling localities (hereafter referred to as populations) from across the distribution range of this complex in Europe, focusing on Pyrenees, Alps, Scandinavia and Britain (Figure 1, Table 1). The sampling areas of *D. majalis* and *D. traunsteineri* were classified into three categories with regard to the proximity of one species to the other: (i) allopatric (Pyrenean and Scandinavian populations of *D. majalis* versus the British and Scandinavian populations of *D. traunsteineri*), (ii) regionally sympatric (that is, Alpine monospecific populations) and (iii) locally sympatric (that is, Alpine localities containing both species within max. 300 m distance from one another). In addition, representatives of the diploid parents of the polyploids, *D. fuchsii* (19 individuals) and *D. incarnata* (23 individuals) were sampled from the same areas as the allotetraploid taxa (Supplementary Table S1). From all individuals, fresh flowers were collected in the field and immediately dried and stored in silica gel until DNA extraction following Hedré *et al.* (2001).

### Development and selection of microsatellite loci

Eight SSR loci (Table 2), newly reported here have been characterized from reference transcriptomes of the diploids *D. incarnata* and *D. fuchsii* (Paun *et al.* unpublished, available from <http://www.botanik.univie.ac.at/systematik/projects/dactylorhiza/downloads.html>). The SSR loci have been selected for length, polymorphism and to amplify in both diploid genomes, and primers were designed using QDD vers. 2 (Meglécz *et al.*, 2010). We opted for EST-derived microsatellites as they are expected to be less prone to deletions resulting in null alleles (Ellis and Burke, 2007), a phenomenon otherwise particularly



**Figure 1** The geographic location of the 24 polyploid *Dactylorhiza* populations studied here. Allopolyploid species are indicated by the colour of the symbols: red, *D. majalis*; green, *D. traunsteineri*; and violet, locally sympatric populations. The acronyms correspond to the localities given in Table 1.

confounding in polyploid codominant data (Dufresne *et al.*, 2014). As all SSR loci used here are (i) dinucleotide repeats, (ii) highly polymorphic (Table 2) and (iii) derived from total RNA, they are likely derived from intronic and UTR regions, and their variation is expected to be selectively (at least close to) neutral (Ellis and Burke, 2007). We initially also considered to use the SSR markers previously developed by Nordström and Hedrén (2007) from genomic DNA, but since these are all trinucleotide repeats showing relatively low levels of variability within and between populations (Hedrén *et al.*, 2011), and were found unable to discriminate between the two sibling allotetraploids in Central Europe (Hedrén unpublished), these markers were not used in the present study.

To verify the power of discrimination of the SSR loci, we calculated for the 42 diploid individuals of *D. fuchsii* and *D. incarnata* the following indices: (i) the polymorphism information content (PIC) and observed heterozygosity ( $H_o$ ) with MolKin v3.0 (Gutiérrez *et al.*, 2005) and (ii) the probability of identity (PIidentity) of two genotypes by chance with GenALEX v6.5 (Peakall and Smouse, 2012). Finally, as information derived from highly-polymorphic markers could be prone to misleading effects of homoplasy (that is, resulting in artificially decreased levels of genetic differentiation and false signals of introgression), we repeated the main genetic analyses using a reduced data set with the four least variable loci (D2, D8, D51 and D81) to check for consistency (Supplementary Figure S1).

### DNA isolation and genotyping

Genomic DNA was extracted from every individual using the QIAGEN DNeasy Plant Mini Kit (Qiagen, Hilden, Germany). The SSR loci were first tested for uniplex amplification following Takayama *et al.* (2011), and then validated for PCR multiplexing in three different reactions in the following combinations: loci D8 and D81 (both labelled with FAM), D5, plus D16 and D55 (with PET), and D2, D51 and D52 (with VIC). Within each colour-coded combination, the alleles of the different loci could be identified and separated by size. For each multiplex PCR, we applied the 5'-tailed primer method (Boutin-Ganache *et al.*, 2001) to label amplicons for visualization on the capillary sequencer. Forward primers were 5'-tailed with the 16-bp CAG sequence (CAGTCGGGCGTCA TCA). We added GTTT 'pigtailed' to the 5' end of the reverse primer to facilitate

addition of one adenosine nucleotide by Taq polymerase (Brownstein *et al.*, 1996). We used the 2 × Type-It Multiplex PCR Master Mix (Qiagen), 0.3  $\mu$ M of each forward primer, 1.5  $\mu$ M of the labelled primer, 1.5  $\mu$ M of each reverse primer and up to 50 ng of template DNA to a final volume of 5  $\mu$ l. PCR amplifications were carried out in a GeneAmp PCR System 9700 thermocycler (Life Technologies, Darmstadt, Germany) using the following cycling conditions: initial denaturation at 95 °C for 5 min, 20 touchdown cycles at 95 °C for 30 s, 63 °C (decreased 0.5 °C per cycle) for 90 s and 72 °C for 30 s, then 20 cycles at 95 °C for 30 s, 53 °C for 90 s and 72 °C for 30 s, followed by a final elongation at 60 °C of 30 min. The fluorescence-labelled, Sephadex (GE Healthcare Bio-Sciences AB, Uppsala, Sweden)-filtered PCR products were separated on a capillary sequencer ABI 3130xl (Life Technologies) together with an internal size standard (GeneScan 600 LIZ v2.0, Life Technologies). Fragments were scored using the GeneMarker v. 2.4.0 software (SoftGenetics, State College, PA, USA), and they were further manually checked. To avoid any error bias in estimating allele dosage, the genotype of 38 polyploid individuals (10% of total) was confirmed by at least two independent repeats (starting from DNA extracts), revealing that the amplification and the scoring were fully reproducible.

To designate genotypic configurations for the tetraploid individuals, we used the microsatellite DNA allele counting-peak ratios method (Esselink *et al.*, 2004). This method is based on quantitative values for microsatellite allele amplification peak areas and assesses the dosage of the amplified products (observed alleles) in the samples, by taking into account the potential for differential PCR amplification of alleles of different lengths. To investigate the reliability of this approach, we performed a Mantel test as implemented in the *ecodist* package (Goslee and Urban, 2007) in R version 3.1.1 (R Core Team, 2013) between two matrices of  $G_{ST}$  pairwise population measures calculated with the software Genodive v.2.0b26 (Meirmans and Van Tienderen, 2004). The first distance matrix was calculated using the quantitatively scored data with the microsatellite DNA allele counting-peak ratios method. To calculate the second distance matrix, the allelic frequencies from a qualitative scoring were corrected using a maximum likelihood method modified from De Silva *et al.* (2005). The correlation between both matrices was highly significant ( $r=0.98$ ;  $P<0.001$ ), indicating a very good fit of the quantitative estimates.

**Table 1** Sampling localities and genetic diversity estimations for the *Dactylophiza* allopolyploid populations and the diploid parental species studied here

Acronym	Lat/Long	N	Num	Eff_num	A	P	Ho	He	F <sub>IS</sub>
<i>D. traunsteineri</i> s.l.									
SCA5	60.623N 17.610E	12	7.25	4.21	5.82 ± 0.40	0.24 ± 0.12	0.71	0.75	0.050 <sup>a</sup>
SCA4	57.817N 18.895E	14	8.00	4.90	6.37 ± 0.64	0.10 ± 0.05	0.63	0.80	0.213 <sup>a</sup>
SCA3	57.34N 18.321E	20	8.12	4.14	5.34 ± 0.77	0.06 ± 0.03	0.70	0.72	0.020
BRI5	57.685N 7.206W	20	5.25	2.61	3.92 ± 0.29	0.01 ± 0.01	0.65	0.60	-0.091 <sup>a</sup>
BRI4	57.767N 5.569W	5	2.75	1.96	2.75 ± 0.37	0.00 ± 0.00	0.56	0.48	-0.205 <sup>a</sup>
BRI3	57.422N 5.819W	15	5.75	3.05	4.54 ± 0.42	0.00 ± 0.00	0.66	0.64	0.042
BRI2	54.282N 0.690W	9	4.50	3.02	4.15 ± 0.52	0.13 ± 0.13	0.65	0.65	0.007
BRI1	54.253N 0.685W	19	6.50	3.59	4.95 ± 0.64	0.07 ± 0.05	0.70	0.68	-0.036 <sup>a</sup>
ALP8	47.341N 12.805E	34	14.12	7.19	8.12 ± 0.81	0.11 ± 0.04	0.81	0.83	0.033 <sup>a</sup>
ALP11	47.282N 11.185E	10	3.62	2.70	3.42 ± 0.25	0.00 ± 0.00	0.73	0.64	-0.155 <sup>a</sup>
ALP16	47.710N 15.217E	24	9.50	4.077	6.09 ± 0.36	0.08 ± 0.05	0.66	0.74	0.117 <sup>a</sup>
Mean ± s.e.			6.85 ± 0.95	3.77 ± 0.43	5.04 ± 0.46	0.07 ± 0.02	0.68 ± 0.02	0.68 ± 0.03	0.000 ± 0.03
<i>D. majalis</i> s.s.									
SCA2	55.931N 14.068E	11	7.50	4.61	6.44 ± 0.36	0.18 ± 0.10	0.84	0.79	-0.064 <sup>a</sup>
SCA1	55.818N 12.946E	17	7.25	4.35	5.56 ± 0.67	0.02 ± 0.02	0.78	0.74	-0.067 <sup>a</sup>
PYR3	42.859N 0.495E	14	8.37	4.66	6.15 ± 0.91	0.24 ± 0.12	0.80	0.75	-0.066 <sup>a</sup>
PYR1	42.862N 1.9810E	18	12.25	6.94	8.33 ± 0.64	0.48 ± 0.24	0.80	0.85	0.062
ALP1	47.679N 15.646E	10	8.62	5.11	7.00 ± 0.57	0.02 ± 0.01	0.85	0.81	-0.064 <sup>a</sup>
ALP4	47.586N 15.100E	9	5.50	3.66	5.02 ± 0.32	0.09 ± 0.07	0.78	0.74	-0.056 <sup>a</sup>
ALP7	47.795N 13.393E	6	8.62	5.47	8.01 ± 0.72	0.03 ± 0.03	0.79	0.82	0.044 <sup>a</sup>
ALP10	47.745N 15.351E	17	11.50	6.54	7.85 ± 0.86	0.11 ± 0.04	0.85	0.83	-0.023
ALP12	47.319N 11.542E	9	9.37	5.93	7.75 ± 0.82	0.16 ± 0.10	0.82	0.82	-0.009
ALP14	47.282N 12.774E	17	11.50	6.92	7.98 ± 0.78	0.14 ± 0.07	0.79	0.84	0.059 <sup>a</sup>
Mean ± s.e.			9.05 ± 0.68	5.42 ± 0.36	7.01 ± 0.36	0.15 ± 0.04	0.81 ± 0.01	0.80 ± 0.01	-0.018 ± 0.017
<i>Locally sympatric</i>									
ALP9	47.461N 12.366E	24	14.00	7.29	8.27 ± 0.92	0.20 ± 0.07	0.84	0.82	-0.023 <sup>a</sup>
ALP13	47.529N 12.579E	30	14.87	7.46	8.20 ± 0.97	0.31 ± 0.17	0.72	0.82	0.124 <sup>a</sup>
ALP15	47.814N 13.244E	22	11.50	6.02	7.48 ± 0.74	0.06 ± 0.03	0.82	0.81	-0.015
Mean ± s.e.			13.4 ± 1.01	6.92 ± 0.45	7.95 ± 0.25	0.19 ± 0.07	0.79 ± 0.04	0.82 ± 0.01	0.028 ± 0.05
<i>Diploids</i>									
<i>D. fuchsii</i>	Supplementary Table 1	19	8.25	5.92	6.88 ± 1.14	0.77 ± 0.32	0.61	0.78	NA
<i>D. incarnata</i>	Supplementary Table 1	23	7.12	4.56	5.86 ± 0.95	0.27 ± 0.14	0.30	0.70	NA

Acronyms correspond to the localities given in Figure 1. Abbreviations: N, number of individuals studies per population; Num, average number of alleles per locus; Eff\_num, the effective number of alleles; A, allelic richness; P, private alleles; Ho, observed heterozygosity; He, expected heterozygosity; F<sub>IS</sub>, inbreeding coefficient.  
<sup>a</sup>Indicate values significantly different from 0. NA indicates not applicable.

### Sibling species diversity and relatedness

To assess the genetic diversity for each population and species, the average number of alleles per locus (Num), the observed and the expected heterozygosity (Ho and, respectively, He), as well as the inbreeding coefficient (F<sub>IS</sub> = 1 - Ho / He) were computed with Genodive. Genetic diversity and rarity were estimated from allelic richness (A) and, respectively, the private alleles per locus (P), following a generalized rarefaction approach using ADZE v1.0 (Szpiech *et al.*, 2008).

Although neopolyploids are expected to show disomic inheritance, a low rate of allele exchange between the two subgenomes each generation is sufficient to homogenize allele frequencies among the two subgenomes, even in fairly young allopolyploids (Meirmans and Van Tienderen, 2013). Allozyme studies in allotetraploid *Dactylophiza* showed that intergenomic recombinations are rare, but existent (Hedrn, 1996; Aagaard *et al.*, 2005). For three of the microsatellite loci investigated here (that is, D2, D52 and D55) for which a formal test is feasible due to non-overlapping parental allelic ranges (see Supplementary Figure S2), we observed a departure from disomic inheritance, based on G-tests of independent segregation of homoeologs (Aagaard *et al.*, 2005; see Supplementary Table S2). In addition, computed inbreeding coefficients were close enough to zero to contradict a state of fixed heterozygosity at all

eight loci (see below). Therefore, further analyses of genetic diversity and genetic structure assumed a model of tetrasomic inheritance.

### Genetic structure and phylogeographical pattern

To visualize the genetic patterns among polyploids and the representatives of the diploid parental species, we constructed a Principal Coordinates Analysis (PCO), starting from a Bruvo pairwise individual distance (Bruvo *et al.*, 2004) computed with the *polysat* package (Clark and Jasieniuk, 2011) in R. As they are free of underlying assumptions, multivariate analyses such as PCO are suitable to analyse mixed-ploidy data (Jombart *et al.*, 2009; Dufresne *et al.*, 2014). The Bruvo distance is based on the stepwise mutation model, taking allele length differences proportionally into consideration. It has the advantage that it can be used regardless of the ploidy of individuals and it is not affected by dosage uncertainty (Dufresne *et al.*, 2014).

To investigate the population structure and search for potential signals of admixture, we used Structure ver. 2.3.3 (Pritchard *et al.*, 2000) implemented on the Lifeportal of the University of Oslo (<https://lifeportal.uio.no/>). Two main analyses were performed with 25 million iterations each, plus 2.5 million iterations as burn-in. The first analysis included all 428 diploid and polyploid samples, coding the missing alleles in the diploids as recessive but not

**Table 2** Primer sequences and characteristics of eight microsatellite loci newly reported here for *Dactylorhiza*

Locus	Primer sequence	Observed size range (bp)	PIC <sup>2x</sup>	H <sub>0</sub> <sup>2x</sup>	N <sub>A</sub> <sup>2x</sup>	N <sub>A</sub> <sup>4x</sup>	Genbank Acc. (D.f./D.i.)	Repeat motif (D.f./D.i.)
D2	<b>F-CAGTCGGGGCGTCATC</b> ATGAAATACACGAAGGGCGAG R-GTTTGATCGCCGACTTAACCG	291–319	0.78	0.81	7	14	KJ209801/KJ209802	(GA) <sub>6</sub> /(GA) <sub>11</sub>
D5	<b>F-CAGTCGGGGCGTCATC</b> ATTTGACGAAGTCAGGCATCTC R-GTTTCGCTAGAAAGCTCCGTTGAC	134–172	0.88	0.89	13	20	KJ209803/KJ209804	(CT) <sub>9</sub> (TC) <sub>7</sub> /(CT) <sub>10</sub> (TC) <sub>9</sub>
D8	<b>F-CAGTCGGGGCGTCATC</b> AATTCCTCCGAGCAAAC R-GTTTGCAGCGWTGACTTTATCCA	309–361	0.89	0.9	16	25	KJ209806/KJ209805	(TC) <sub>8</sub> /(TC) <sub>18</sub>
D16	<b>F-CAGTCGGGGCGTCATC</b> ATTGCTGTTTCTGGGAGAC R-GTTTCTCYTACCCTCCAACCC	208–286	0.94	0.94	29	38	KJ209808/KJ209807	(TC) <sub>14</sub> /(TC) <sub>7</sub> TT(TC) <sub>23</sub>
D51	<b>F-CAGTCGGGGCGTCATC</b> AAAGTAATGGGCTTTATGCTATTGA R-GTTTATTGGAATACATTACAAGGATGTTCA	90–124	0.65	0.67	12	18	KJ209809/KJ209810	(AG) <sub>14</sub> /(AG) <sub>8</sub>
D52	<b>F-CAGTCGGGGCGTCATC</b> ACCTCCTCCTCCTCTTGT R-GTTTGGGCACTACTACACCTGCTCTCAA	172–228	0.69	0.71	7	24	KJ209812/KJ209811	(CT) <sub>7</sub> ...(CT) <sub>4</sub> /(CT) <sub>9</sub> ...(CT) <sub>14</sub>
D55	<b>F-CAGTCGGGGCGTCATC</b> ATCCGTGAGTGGATTTCGTCT R-GTTTAGGAAGCTCCGCTCTCTCAG	296–342	0.79	0.81	11	19	KJ209814/KJ209813	(CG) <sub>3</sub> (AG) <sub>4</sub> /(CG) <sub>5</sub> (AG) <sub>13</sub>
D81	<b>F-CAGTCGGGGCGTCATC</b> ATTTGAAACATTTCTCCTCCG R-GTTTGCCTAACCTAGCGTGTGCT	84–116	0.87	0.88	15	17	KJ209815/KJ209816	(CT) <sub>14</sub> /(CT) <sub>20</sub>

Abbreviations: PIC<sup>2x</sup>, polymorphism information content; H<sub>0</sub><sup>2x</sup>, observed heterozygosity; N<sub>A</sub><sup>2x</sup> and N<sub>A</sub><sup>4x</sup>, total number of alleles observed within diploids and allotetraploids, respectively. Genbank accession numbers and repeat motives are reported separately for the references *D. fuchsii* and *D. incarnata*, respectively. The parts of the primer sequence that contain the tails introduced for multiplexing are shown with bold letters.

ambiguous alleles—according to the documentation for Structure version 2.3. This analysis used a model of uncorrelated allelic frequencies, as we expect the allelic frequencies to have changed independently in each of the two diploid species and the polyploids. The analysis was run starting with  $K=1$  and finished at  $K=10$ , as no improvement in  $\Delta K$  (Evanno *et al.*, 2005) has been observed after  $K=2$  (Supplementary Figure S3A). A second analysis was run with Structure for the 386 tetraploid individuals with  $K=1-30$ , and using correlated allele frequencies as the tetraploids compared here are young, sibling taxa.

As in the Structure analysis of all individuals a substructure was visible within *D. incarnata*, we performed two additional analyses (each with 5 million iterations plus 0.5 million as burn-in) to check whether this was still depicted when the polyploids were not included in the analyses. Therefore, one analysis included the 42 diploid individuals of *D. fuchsii* and *D. incarnata*, with  $K=1-10$ , and using uncorrelated allele frequencies, as the two diploid species are some of the most divergent species in the genus and their allelic frequencies are expected to change independently of each other. Finally, a separate analysis was done for the 23 individuals of *D. incarnata*, using  $K=1-10$  and a model of correlated allele frequencies, as this was an analyses within a single species.

All Structure analyses used an admixture model and 20 independent runs for each  $K$  value. The results were summarized on the online platform Harvester (Earl and VonHoldt, 2011), which implements the Evanno method (Evanno *et al.*, 2005) to assess the most likely  $K$  value given the data (Supplementary Figures S3 and S4). We produced combined files from the 20 replicates of the best  $K$  for each analysis using Clumpp v1.1.2 (Jakobsson and Rosenberg, 2007). The graphical representations of the Structure results were prepared with Distruct v1.1 (Rosenberg, 2004).

To test whether species and geographic groups within the polyploid group (that is, Pyrenees, Alps, Scandinavia and Britain) are biologically meaningful, we performed Analyses of Molecular Variance (AMOVA) as implemented in Genodive. Population subdivision was estimated from  $G$ -statistics analogues built from variance components obtained with AMOVA. Variance components and  $G$ -statistics were tested for significance using an exact non-parametric test and 10 000 permutations. In addition, based on geographic coordinates and pairwise  $G_{ST}$  ( $pwG_{ST}$ ) values, we tested for isolation by distance (IBD) separately for each polyploid species, by using a Mantel test as implemented in the *ecodist* package (Goslee and Urban, 2007) in R. Further, we tested whether the IBD slope and intercept were significantly different with the Reduced Major Axis regression in the R-based *lmodel2* package (Legendre, 2013). Exact significance tests were based on the Spearman correlation coefficients and 10 000 permutations.

### Interspecific gene flow between sibling allopolyploids

To test for gene flow in sympatric tetraploid populations, we compared population  $pwG_{ST}$  measures (Nei, 1987) between the two species when found in allopatry, in regional sympatry and in local sympatry (see section Plant Sampling above) with a Kruskal–Wallis ANOVA. For this purpose, a *post hoc* non-parametric multiple comparison test (Siegel and Castellan, 1988) was performed at  $P=0.05$  using the R package *pgirmess* (Giraudoux, 2013).

Furthermore, we used a log Bayes Factor approach with Migrate-n version 3.6.8 (Beerli and Palczewski, 2010) to estimate gene flow between the sibling allopolyploids in sympatry by comparing two models. First, we run a no-migration model with two populations (separating individuals of the two species from the Alps) with different effective population sizes (using a population estimator  $\theta=4N_e\mu$ , where  $N_e$  is the effective population size and  $\mu$  is the mutation rate). The second model was similar to the previous one but allowed different mutation-scaled migrations ( $M_i=m_i/\mu$ , with  $m_1$  the migration rate of *D. majalis* genes to *D. traunsteineri* and  $m_2$  the migration rate in the opposite direction). The calculation of log marginal likelihoods for the two models was done using the Bezier approximation, as this provides a better estimate of the marginal likelihood than the harmonic mean estimator (Beerli and Palczewski, 2010). These calculations relied on static heating with the temperatures of the four heated chains set at 1.0, 1.5, 3.0 and 100 000. Each hot and cold chain was run for 400 million generations per locus (20 replicates) with samples taken from the cold chain every 100 000 steps after a 100 000 burn-in per replicate. A random tree was used as a starting genealogy, and the initial theta and migration rates were estimated from  $F_{ST}$  calculations. We used slice sampling and uniform prior distribution to estimate  $\theta$  (range=0–100, mean=50) and  $M$  (range=0–300, mean=150 and delta=250), respectively.

As Migrate-n is built for diploids (Beerli and Palczewski, 2010), we 'diploidized' our data choosing two random alleles per locus for each tetraploid individual. To assess the impact of this approach, five different data sets have been independently generated and run under both population models. The analyses used the Brownian approximation of the SMM and with mutation rate modifiers for each locus calculated according to the number of observed alleles. All analyses were run on the CIPRES Science Gateway (Miller *et al.*, 2010).

## RESULTS

### Microsatellite loci

Across the diploid individuals, the microsatellite loci showed between 7 and 29 alleles per locus, corresponding to a high level of

polymorphism (PIC mean  $\pm$  s.e.:  $0.8 \pm 0.1$  and cumulative PIdentity  $2.8 \times 10^{-12}$ , Table 2). As the number of alleles per individual is double for allotetraploids as compared with diploids (that is, larger effective population sizes) and the total numbers of alleles per locus amplified across all polyploid individuals were higher (between 14 and 38 alleles per locus, Table 2), we expect an even higher resolution power within the polyploid group, as compared with the diploids. The analyses using the data set reduced to the four least variable loci (Supplementary Figure S1) were highly congruent to the analyses of the full data set indicating a negligible impact of homoplasy in our inferences.

### Genetic diversity

Estimates of genetic diversity for the studied tetraploid populations are presented in Table 1. On average, the microsatellite loci revealed 2.8 different alleles per locus per polyploid individual. The effective number of alleles per population across loci ranged from 2.0 (BRI4) to 7.5 (ALP13). In general, *D. traunsteineri* populations showed lower values than *D. majalis* populations for all diversity measurements. However, the highest values were found in the locally sympatric populations (in particular the population ALP9). The least diverse populations were the British *D. traunsteineri* populations (BRI1–BRI5) and the most western Alpine population sampled here (ALP11). The Scandinavian populations of each species showed intermediate diversity levels, whereas Pyrenean populations of *D. majalis* had higher diversity than their counterparts. The private alleles followed a similar pattern, but with exceptions. The Pyrenean populations of *D. majalis* and the northern-most Scandinavian population of *D. traunsteineri* (that is, SCA5) showed a remarkably high number of private alleles. The absolute values of the inbreeding coefficients ( $F_{IS}$ ) were usually very low. However, a tendency towards inbreeding (that is, positive and high  $F_{IS}$  values) was detected in three populations (*D. traunsteineri* SCA4, ALP16 and the mixed population ALP13). In comparison with polyploids, the diploid species showed intermediate values of effective number of alleles (8.3 and 7.1 for *D. fuchsii*, and *D. incarnata*, respectively). The same pattern was observed for allelic richness, but not for private alleles (Table 1). In this case, *D. fuchsii* showed a high proportion of private alleles (0.8) but not *D. incarnata* (0.3),

potentially indicative of higher gene flow with the polyploids of the latter. In addition, the difference in proportion of private alleles could relate to the generally higher diversity of *D. fuchsii* in comparison with *D. incarnata* (Table 1; Pillon *et al.*, 2007). This renders many *D. fuchsii* individuals included here to be more dissimilar to the actual maternal parents of the polyploids than the representatives of the paternal, *D. incarnata* species.

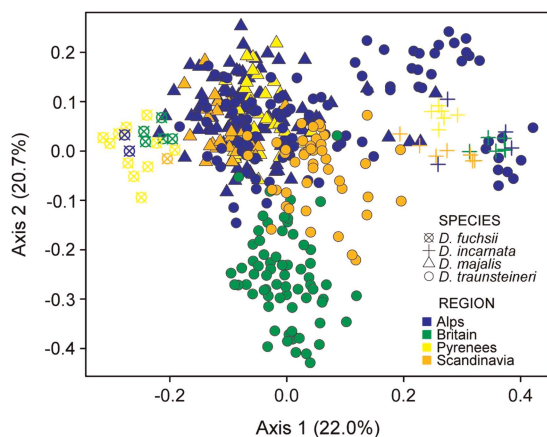
After rarefaction correction, at the regional scale the Alpine populations showed the highest levels of allelic richness ( $16.0 \pm 2.2$ ) and private alleles ( $1.8 \pm 0.5$ ). Populations in the Pyrenees also showed high levels of allelic richness ( $14.0 \pm 1.6$ ) and private alleles ( $1.7 \pm 0.8$ ). Scandinavia had intermediate values in both genetic diversity and private alleles ( $13.4 \pm 1.8$  and  $0.7 \pm 0.2$ , respectively), whereas Britain was the most genetically depauperate region ( $8.9 \pm 0.8$  and  $0.3 \pm 0.1$ ).

### Low species differentiation and shallow genetic structure

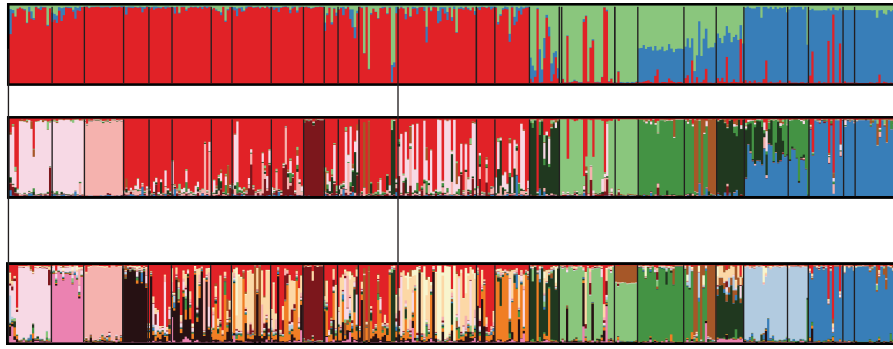
The PCO (Figure 2) showed most tetraploid individuals to have an intermediate position between the two diploids, which had extreme positions along the first ordination axis, explaining 22.0% of the variation across the data. Several *D. traunsteineri* individuals, in particular those from populations ALP11 and ALP16, occupied positions close to the *D. incarnata* individuals. The second axis, containing 20.7% of the total variation, separated the *D. traunsteineri* individuals from Britain and some of the individuals from Scandinavia from the rest. In addition, we observed a geographical clustering within the two diploid clusters. For example, the *D. incarnata* individuals from Britain, Pyrenees and Scandinavia formed three groups, respectively, whereas the individuals from the Alps spread out to the extremes of the *D. incarnata* cluster.

For the best partition ( $K=2$ ) when analysing the data set including all individuals with Structure (Supplementary Figure S3A), the *D. traunsteineri* individuals from Scandinavia, Britain and most of the individuals of ALP11, ALP13 and ALP16 formed a separate cluster, separated from all other polyploid individuals (that is, including *D. traunsteineri* from ALP8, ALP9 and ALP15, plus all *D. majalis* individuals except one individual from ALP13). With regard to the diploids, all *D. fuchsii* individuals were assigned to the ‘majalis’ cluster, whereas the *D. incarnata* individuals were split between the ‘traunsteineri’ cluster (that is, some of the *D. incarnata* individuals sympatric to *D. traunsteineri* populations ALP11, BRI5 and SCA4) and the ‘majalis’ cluster. However, the latter separation disappeared if only the diploids were analysed—this analysis separated the diploid species into different clusters according to the best partition of the data for  $K=2$  (Supplementary Figure S4A). When only *D. incarnata* was analysed, the best partitioning was obtained at  $K=3$  with clusters largely correlated with the geographic origin of the material (Supplementary Figure S4B).

When analysing only the tetraploid individuals separately, all individuals of *D. majalis* (with the exception of four admixed individuals of the sympatric population ALP13) were assigned to one genetic group (Figure 3) for the best data partition identified ( $K=3$ ; Supplementary Figure S3B). A second genetic cluster comprised *D. traunsteineri* individuals from Britain and a third cluster comprised individuals of *D. traunsteineri* from the Alps (from ALP11, and in part ALP13 and ALP16). The Scandinavian populations of *D. traunsteineri*, both from mainland and from Gotland, appear as admixed between the two other genetic clusters of *D. traunsteineri*. Interestingly, the rest of the *D. traunsteineri* individuals from the Alps (ALP8, the rest of ALP13 and ALP16, and from the sympatric populations ALP9 and ALP15) remained assigned to the general ‘majalis’ cluster. Admixture signals were found in several individuals of both taxa, but the admixture was more common in two of the



**Figure 2** PCO of microsatellite data of *Dactylorhiza*. Ordination based on the Bruvo distance matrix among 386 *Dactylorhiza* allopolyploids and 42 diploid progenitors. Individuals are labelled according to geographical provenance by different colours: blue, Alps; orange, Scandinavia; yellow, Pyrenees; and green, Britain. Species are indicated by shapes of the symbols: crosses, *D. incarnata*; crossed circles, *D. fuchsii*; triangles, *D. majalis*; and circles, *D. traunsteineri*.



**Figure 3** Bayesian admixture analysis using structure on 386 allopolyploid *Dactylorhiza* individuals grouped to the optimal ( $K=3$ ) and two best suboptimal ( $K=9$  and  $16$ ) log-likelihood partitions. Each bar represents a different individual, whereas each segment length is proportional to the estimated membership of each group. The three locally sympatric populations are marked with a \*.

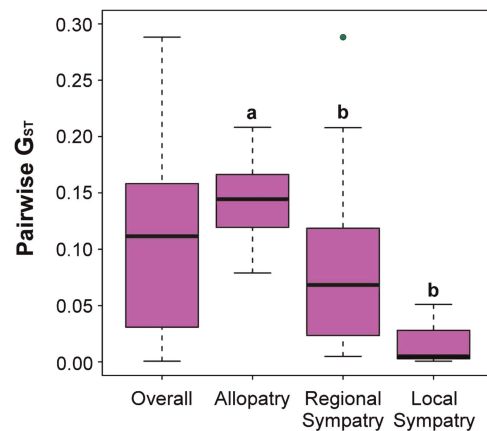
**Table 3** Analysis of molecular variance (AMOVA) on the microsatellite data across the polyploid *Dactylorhiza* populations

Source of variation	df	MS	% of Variance	G-stat	P-value
<i>Two species: DM and DT</i>					
Among species	1	116.34	0.02	0.02	0.004
Among populations within species	25	47.91	0.25	0.25	<0.001
Among individuals	359	8.35	0.73	0.27	—
<i>Four geographic regions: Pyrenees, Alps, Scandinavia and Britain</i>					
Among geographic regions	3	115.47	0.10	0.10	<0.001
Among populations within regions	23	42.71	0.19	0.21	<0.001
Among individuals	359	8.35	0.71	0.29	—
<i>Six groups, combining taxonomy and geography: DM Pyrenees, DM Alps, DM Scandinavia, DT Alps, DT Scandinavia and DT Britain</i>					
Among groups	5	100.47	0.11	0.11	<0.001
Among populations within groups	21	38.65	0.17	0.19	<0.001
Among individuals	359	8.35	0.72	0.28	—

Mean square (MS) and percentage of variation are given for the G-statistics. DM refers to *D. majalis* and DT to *D. traunsteineri*.

sympatric populations (ALP9 and ALP13). For two suboptimal partitions ( $K=9$  and  $K=16$ , Supplementary Figure S3B), several populations were assigned as independent clusters (for example, PYR1, PYR3, SCA1, SCA2 and ALP4). Admixture appeared to affect more significantly the Alps region, but also populations from Yorkshire (BRI1 and BRI2, appearing as admixed between Scandinavian and Scottish populations, for  $K=9$ ) and SCA5 (for  $K=16$ ). Independent structure analyses on each of the three locally sympatric populations with a bound model of  $K=2$  (Supplementary Figure S5) were unable to assign individuals to different clusters for ALP9 and ALP15. However, when analysing all tetraploid individuals together (Figure 3) for  $K=16$  the *D. majalis*, and, respectively, the *D. traunsteineri* individuals sympatric in ALP9 (that is, the type locality of *D. traunsteineri*) are generally assigned to different genetic clusters.

The AMOVA (Table 3) indicated a high genetic similarity between the sibling polyploid species ( $G_{CT}=0.02$ ). However, a phylogeographical signal was present in the data, as the geographic origin accounted for a non-negligible amount of genetic variance ( $G_{CT}=0.10$ ), similar to the amount accounted for by grouping species by geographical origin ( $G_{CT}=0.11$ ). Congruent with the large geographical effect, *D. traunsteineri* exhibited significant IBD, as



**Figure 4** Boxplot of population pairwise genetic divergence ( $pwG_{ST}$ ) between sibling *Dactylorhiza* allopolyploid populations when found in allopatry, in regional sympatry (i.e., in the Alps) and in local sympatry (i.e., within max. 300 m from one another). The first boxplot displays the overall variation in  $pwG_{ST}$ . Outliers are marked as circles. Medians not significantly different at  $P<0.05$  are indicated by the same letter (non-parametric multiple comparison test).

evidenced by the positive, significant correlation between pairwise geographic and genetic distances (Mantel's  $r=0.42$ ;  $P<0.001$ ), as well as the Reduced Major Axis analysis (Supplementary Figure S6). However, *D. majalis* showed a positive, but non-significant IBD ( $r=0.24$ ,  $P=0.237$ ), despite the similar distance scale between its populations and those of *D. traunsteineri*.

#### Interspecific gene flow in sympatric populations

Although interspecies  $pwG_{ST}$  were mostly low (average  $\pm$  s.e.:  $0.10 \pm 0.01$ ), congruent with the AMOVA results, we found significant differences between the three categories with regard to the proximity of individuals of one species to the other: allopatric, regionally sympatric and locally sympatric (Kruskal–Wallis  $H=23.55$ ,  $df=2$ ,  $P<0.001$ ). Congruent with the structure analyses, the Alpine populations showed high levels of gene flow between the sibling species as indicated by the significantly lower  $pwG_{ST}$  values than for the allopatric comparisons (Figure 4). Co-occurrence of the two species at the same site (that is, local sympatry) showed the lowest values of  $pwG_{ST}$  ( $0.008 \pm 0.001$ ). However, these values were not significantly different from the rest of the comparisons in the sympatric area ( $P>0.05$  in *post hoc* multiple test). Finally, the allopatric pairwise

comparisons between populations of the two allopolyploids showed significantly higher differentiation than comparisons at the level of the sympatric region (that is, Alps,  $P < 0.05$ ).

The Migrate-n analyses revealed strong support for the model including gene flow between the sibling tetraploid species. The log-likelihood for the full model with gene flow and for the model without gene flow was  $-119203.06$  and  $-3172370.18$ , respectively, which differed by log Bayes Factor of more than 6 millions. For the full model, the Bayesian inference indicated a high level of gene exchange between the species but migration rates did not significantly differ (gene flow from *D. majalis* to *D. traunsteineri*,  $M_{\text{maj-trau}} = 2.4\text{--}6.7$  and gene flow from *D. traunsteineri* to *D. majalis*,  $M_{\text{trau-maj}} = 1.3\text{--}3.8$ ). The average population sizes differed between species ( $\theta_{\text{trau}} = 1.8\text{--}2.4$  and  $\theta_{\text{maj}} = 2.1\text{--}6.8$ ) but their confidence intervals overlapped (Supplementary Table S3). Estimates of effective population sizes, migration rates and log-likelihood slightly varied between data sets, but were in general congruent (Supplementary Table S3).

## DISCUSSION

### Genetic differentiation, multiple origins and phylogeographic pattern

By using highly variable microsatellites, this study corroborates the lack of genetic differentiation ( $G_{CT} = 0.02$ ) between the sibling allopolyploids *D. majalis* and *D. traunsteineri*, previously observed with slower evolving markers (for example, Pillon *et al.*, 2007). The 'porous' genetic boundaries identified do not clearly delimit the recognized taxonomic entities within the polyploids; the geography of populations alone explains a larger part of the genetic variance than the currently accepted species delimitation.

In spite of the remarkable absence of a clear genetic differentiation between the *Dactylorhiza* allopolyploids, our genetic analyses provided information about the phylogeographic history of the *D. majalis* complex. Our results generally confirm the genetic contiguity of *D. majalis* s.s. (Pillon *et al.*, 2007), but point to a high intra-population diversity, most probably as a result of a relatively large effective population size and frequent outcrossing in this polyploid lineage. A latitudinal gradient is evident in allelic richness, with highest values in the Pyrenees and the Alps. This pattern is mirrored by measurements of the private alleles, indicating that the Pyrenees could have acted as a glacial refugial area for the *D. majalis* lineage, perhaps together with the previously recognized area around the Alps (Nordström and Hedrén, 2009). However, the lower diversity of the Scandinavian *D. majalis* populations is in agreement with a post-glaciation colonization of this area (Hewitt, 1999; Nordström and Hedrén, 2008).

In contrast, *D. traunsteineri* showed higher heterogeneity—potentially due to more recent and polytopic origins of this taxon (Nordström and Hedrén, 2009), but less diverse populations compared with *D. majalis*. With the SSR data available, it is difficult to determine the exact number of origins for *D. traunsteineri*. However, the assignment analysis of structure revealed at least three different lineages within *D. traunsteineri* (two in the Alps and one in Britain), but it is unclear whether they are a product of independent origins, or rather only reflect IBD. The genetic patterns as observed in the PCO (Figure 2) and the structure results of the polyploid analysis (Figure 3) support a stepwise connectivity in the *D. traunsteineri* lineage from south towards north and north-west (that is, Alps-Scandinavia and Scandinavia-Britain), congruent with the two migration routes to Scandinavia identified by Nordström and Hedrén (2008). Furthermore, *D. traunsteineri* showed a more prominent IBD than *D. majalis* (see Supplementary Figure S6) despite the similar

distance scales of the distribution of the two taxa. The difference in the IBD patterns between these allopolyploids cannot be explained by different pollinator behaviour (both are pollinated by food deception, mainly by bumblebees; Sletvold *et al.*, 2010) or dispersal, given the similar tiny dust-like seeds (Arditti and Ghani, 2000). The distribution of terrestrial orchids is broadly driven by a general dispersal limitation to some metres from the parent plant (McCormick and Jacquemyn, 2014). However, occasional long-distance dispersal events by wind of up to 2000 km have been inferred (Arditti and Ghani, 2000; Jersáková and Malinová, 2007; Vandepitte *et al.*, 2012). Long-distance, exceptional connections are also visible in the structure results for our data, for example, between Alps and Scandinavia (ALP13-SCA5) and between Scandinavian and Yorkshire populations (for  $K = 9$ ; Figure 3). Because of increased effective population sizes, genetic drift is less efficient in polyploids (Moody *et al.*, 1993) and altogether drift does not appear to be a major evolutionary force in Orchidaceae (Phillips *et al.*, 2012; Vanden Broeck *et al.*, 2014). Multiple origins in different geographical areas and/or a disjunct distribution with strong geographical barriers are potential explanations for the increased IBD pattern observed within *D. traunsteineri* as compared with *D. majalis*.

Alternatively, the observed difference in IBD may relate to historical distribution patterns of these taxa. *Dactylorhiza majalis* is a lowland taxon, which before modern agriculture may have had a wide and relatively continuous distribution in the central European lowlands. The weak differentiation between regions we observed here may thus be explained by a high connectivity of historical populations (Dupouey *et al.*, 2002; Lindborg and Eriksson 2004). In contrast, *D. traunsteineri* is predominantly distributed in upland areas in central Europe and it extends much farther to the north into boreal and low-mountain areas of Scandinavia. The regional populations of *D. traunsteineri* may thus have been isolated for longer, possibly since the early post-glacial period, and its populations may have had more time to diverge from each other.

Regarding '*D. ebudensis*' (that is, here population BRI5) that has been recently embedded within *D. traunsteineri* (Bateman and Denholm, 2012), the microsatellites analysed here confirm its genetic similarity to other *D. traunsteineri* from Britain (Figure 3), but places it in an extreme position along the second axis in the PCO (Figure 2). The population of BRI5 is occupying a distinct habitat (young dune slacks on the island of North Uist) from the rest of the polyploid populations, and it is one of the largest metapopulations of *Dactylorhiza* polyploids in Britain. However, its effective number of alleles, allelic richness and private alleles are some of the lowest from the *D. traunsteineri* populations studied here, with values comparable to those of very small populations with 10 or less individuals (for example, ALP11 and BRI4). This supports a recent establishment of the population on this young dune system (hypothesized to be younger than 2500 years; Paun *et al.*, 2010; Bateman, 2011), most probably as a result of long-distance dispersal from a *D. traunsteineri* source population elsewhere in Britain, and that it experienced a fairly strong bottleneck during establishment.

### Gene flow among sibling allopolyploids

The area with the smallest genetic differentiation between *D. majalis* and *D. traunsteineri* was the Alps, where the two polyploids are sympatric. Here, lineage recombination among *D. majalis* and *D. traunsteineri* was revealed by extensive admixture. Remarkably, most Alpine *D. traunsteineri* populations, including its type locality near Schwarzsee (ALP9), were genetically similar to *D. majalis* populations from the Alps, but also to *D. majalis* from areas in which *D. traunsteineri* was absent. This points towards a largely



unidirectional flow of *D. majalis* genes towards *D. traunsteineri*, probably due to swamping of *D. traunsteineri* as a result of larger effective population sizes of *D. majalis*, and due to larger inflorescences with more flowers in the latter. This is further supported by the Migrate-n results, even if the difference in rates of gene flow in the alternative directions was not found to be significant. The comparison between interspecific pairwise differentiation (Figure 4) between allopatric and, respectively, locally sympatric pairs of populations corroborated the extensive gene flow at local scale, but with visible effects at the scale of the entire Alps. This argument is supported also by the very weak pre-mating barriers in the genus (Aagaard *et al.*, 2005), as *Dactylorhiza* species are food-deceptive and depend on a generalist pollinator spectrum (Ferdy *et al.*, 2001; Cozzolino *et al.*, 2004; Sletvold *et al.*, 2010; Sletvold and Agren, 2011). The sibling allopolyploids investigated here show at least partly overlapping flowering time in sympatry (Bateman, 2011; personal observation) making gene flow possible. At the polyploid level, mechanisms such as homeologs repatterning could quickly achieve an increased postzygotic isolation between sister taxa (Oka, 1953; Lynch and Force, 2000; Gaeta and Pires, 2010); however, in some systems differential loss of duplicate gene copies is either rare or does not contribute significantly to postzygotic reproductive isolation (Modliszewski and Willis, 2012). In such cases, hybridization between sibling polyploids generally augment the level of genetic diversity in polyploids, like for example in *Glycine tabacina* (Doyle *et al.*, 2004), in *Mimulus sookensis* (Modliszewski and Willis, 2012) and in autopolyploids *Houstonia* (Glenon and Church, 2015). The fairly high level of interspecific gene flow between *D. majalis* and *D. traunsteineri* suggests that any homeologs repatterning that has accumulated since the allopolyploidization events did not contribute significantly to postzygotic reproductive barriers in this group. Rather, the genomes of the two allopolyploids appear to be porous for introgression of genes from related polyploid genomes.

#### Gene flow between allopolyploids and their parents

Several previous studies have reported backcrossing of tetraploids with their diploid parental lineages on secondary contact in *Dactylorhiza* (for example, Hedrén, 2003; Aagaard *et al.*, 2005; Nordström and Hedrén, 2008; De Hert *et al.*, 2011, 2012), but also in other polyploid complexes (for example, Burton and Husband, 2001; Stift *et al.*, 2010). This may be instrumented either through the production of unreduced gametes in the diploids or via a triploid generation of reduced fertility (De Hert *et al.*, 2011). Our results support such an introgression, at least in some populations of *D. traunsteineri* which could have hybridized in particular with *D. incarnata*. Indeed, the population ALP11 and most of the *D. traunsteineri* individuals from ALP16 and ALP13 appear in the PCO analysis (Figure 2) more related to the diploid *D. incarnata* than to the rest of the allotetraploids. This inference is not contradicted by the structure results on the data set including all individuals, which place for example the *D. traunsteineri* individuals from ALP11 and the sympatric *D. incarnata* individuals in the same genetic cluster. The *D. traunsteineri* population of ALP11 is a very small polyploid population (ca. 10 individuals), and sits in the middle of a large diploid *D. incarnata* stand. However, the *D. traunsteineri* individuals from ALP11 have been confirmed to be tetraploid by flow cytometry (Temsch and Paun, unpublished). We hypothesize that they may be the product of recent backcrossing of *D. incarnata* alleles into the polyploid background of *D. traunsteineri*, most likely via formation of unreduced gametes by the diploids. In general, introgressive gene flow between cytotypes after secondary contact has been reported more frequently in the direction from the

diploid to the tetraploid level (for example, Ståhlberg, 2007). Although evidence for local hybridization and introgression between *Dactylorhiza* diploids and allotetraploids exists (Hedrén, 2003), postzygotic barriers have been demonstrated to prevent local breakdown of species boundaries as a result of genic incompatibilities and localized pollen flow, in combination with different microhabitat preference (De Hert *et al.*, 2011, 2012). For example, crossing experiments of De Hert *et al.* (2012) document strong post-mating reproductive barriers that prevent local breakdown of species boundaries in mixed populations of *D. incarnata*, *D. fuchsii* and allopolyploid *D. praetermissa*, despite identifying frequent F<sub>1</sub> hybrids in the natural populations. Although rare, introgression across ploidy barriers could however in time lead to significant alterations in the morphological, ecological and genetic features of polyploid species (Chapman and Abbot, 2010).

#### Recombination, maintenance of phenotypes and the fate of sibling allopolyploids

It has been hypothesized that gene flow between allopolyploid lineages, and between the polyploid and diploid level increases their genetic variability and widens the genetic basis for further adaptation at the polyploid level, enhancing the evolutionary success of allopolyploid species (Doyle *et al.*, 1999; Petit *et al.*, 1999; Meimberg *et al.*, 2009). However, extensive gene flow between sibling polyploids of different ages may bring together different genetic materials into a common gene pool in sympatry. This genetic homogenization will have a significant effect on the subsequent evolutionary trajectories of the sibling polyploids, potentially leading to lineage swamping into an enriched panmictic species (Doyle *et al.*, 2004; Soltis *et al.*, 2010). Interestingly, despite the high level of gene flow in sympatry, the allopolyploids studied here maintain their phenotypic distinctiveness (Soó, 1980; Baumann and Künkele, 1988; Delforge, 2001). This phenomenon has been also reported for example in *Asplenium* allooctoploids (Perrie *et al.*, 2010). In the context of the extensive gene flow and similar genomic background in *Dactylorhiza* sibling allopolyploids, we expect a fairly strong divergent selection to act on restricted genomic regions responsible for differential adaptation (Wu, 2001; Nosil *et al.*, 2009) in order to maintain the observed phenotypic divergence.

Previous studies have consistently inferred the patterns of gene expression (Paun *et al.*, 2011) and DNA methylation (Paun *et al.*, 2010) among *D. majalis* and *D. traunsteineri* to have been shaped by divergent selection in response to different environmental pressures, in particular related to water availability and temperature differences in the native environments. Indeed, after iterative polyploidization events, phenotypic divergence between the resulting lineages can result from reciprocal silencing of homeologs (Lynch and Force, 2000; Bikard *et al.*, 2009) and other divergent epigenetic alterations in response to the microenvironment (Bosdorf *et al.*, 2008; Jablonka and Raz, 2009). The inheritance of epigenetic alterations in the face of gene flow could be maintained by mechanisms such as paramutation (Meyer *et al.*, 1993; Alleman *et al.*, 2006) or trans-chromosomal interactions, which have been recently demonstrated during *Arabidopsis* hybridization events (Greaves *et al.*, 2013). Alternatively, the phenotypic divergence between sibling allopolyploids could be maintained by disruptive selection at a small number of loci ('genomic islands'; Nosil *et al.*, 2009; Renaut *et al.*, 2013) within the otherwise porous genomic landscape. Genetic mechanisms such as divergence hitchhiking can allow ecological divergence in the presence of gene flow (Via, 2012; Feder *et al.*, 2012). Ongoing investigations based on gene expression and genome-wide screen studies will help to discern between the proposed alternative hypotheses.

## DATA ARCHIVING

Data accessibility Source data and R scripts used for this work are available from the Dryad Digital Repository (<http://dx.doi.org/10.5061/dryad.9hb89>). The separate worksheets refer to information related to (1) microsatellite data, (2) pairwise geographical and genetic distances of *D. majalis*, (3) pairwise geographical and genetic distances of *D. traunsteineri*, (4) population pairwise  $G_{ST}$  data and (5) additional parameters for analysis. The sequences of the microsatellite regions are available from GenBank, accession numbers KJ209801 to KJ209816.

## CONFLICT OF INTEREST

The authors declare no conflict of interest.

## ACKNOWLEDGEMENTS

We are grateful to Richard Bateman, Mark Chase, Laure Civeyrel, Mike Fay, Javier Luna, Ortrun Mittelsten Scheid, Peter Schönswetter, Laura Sedman, Andreas Tribsch, Franz Weberndorfer, Barbara Mable and three anonymous reviewers for their contribution to the work presented here. Natural England and the Forestry Commission (UK), and regional county administrations in Sweden are acknowledged for issuing necessary collecting permits. Sequencing the reference transcriptomes for microsatellite development has been done at the CSF Vienna (<http://ngs.csf.ac.at>). This study was funded by the Austrian Science Fund (FWF; projects P22260 and Y661 awarded to O Paun) and a Marie Curie IntraEuropean fellowship (TransAdaptation, awarded to F Balao).

## AUTHOR CONTRIBUTIONS

OP designed the research and developed the microsatellite loci. FB, MH and OP collected the samples. MT and MTLR collected the data. FB performed most of the analyses. FB and OP wrote the paper. All authors improved the final version of the manuscript.

Aagaard SMD, Sástad SM, Greilhuber J, Moen A (2005). A secondary hybrid zone between diploid *Dactylorhiza incarnata* ssp. *cruenta* and allotetraploid *D. lapponica* (Orchidaceae). *Heredity* **94**: 488–496.

Alleman M, Sidorenko L, McGinnis K, Seshadri V, Dorweiler JE, White J et al. (2006). An RNA-dependent RNA polymerase is required for paramutation in maize. *Nature* **442**: 295–298.

Arditti J, Ghani A (2000). Numerical and physical properties of orchid seeds and their biological implications. *New Phytol* **145**: 367–421.

Bateman RM (2011). Glacial progress: do we finally understand the narrow-leaved marsh-orchids? *New J Bot* **1**: 2–15.

Bateman RM, Denholm I (2012). Taxonomic reassessment of the British and Irish tetraploid marsh-orchids. *New J Bot* **2**: 37–55.

Baumann H, Künkele S (1988). *Die Orchideen Europas*. Kosmos Naturführer: Stuttgart.

Beerli P, Palczewski M (2010). Unified framework to evaluate panmixia and migration direction among multiple sampling locations. *Genetics* **185**: 313–326.

Bikard D, Patel D, Le Métte C, Giorgi V, Camilleri C, Bennett MJ et al. (2009). Divergent evolution of duplicate genes leads to genetic incompatibilities within *A. thaliana*. *Science* **323**: 623–626.

Bossdorf O, Richards CL, Pigliucci M (2008). Epigenetics for ecologists. *Ecol Lett* **11**: 106–115.

Boutin-Ganache I, Raposo M, Raymond M, Deschepper CF (2001). M13-tailed primers improve the readability and usability of microsatellite analyses performed with two different allele-sizing methods. *Biotechniques* **31**: 28.

Brownstein MJ, Carpten JD, Smith JR (1996). Modulation of non-templated nucleotide addition by Taq DNA polymerase: primer modifications that facilitate genotyping. *Biotechniques* **20**: 1004–1010.

Bruvo R, Michiels NK, D'Souza TG, Schulenburg H (2004). A simple method for the calculation of microsatellite genotype distances irrespective of ploidy level. *Mol Ecol* **13**: 2101–2016.

Burton TL, Husband BC (2001). Fecundity and offspring ploidy in matings among diploid, triploid and tetraploid *Chamerion angustifolium* (Onagraceae): consequences for tetraploid establishment. *Heredity* **87**: 573–582.

Chapman MA, Abbott RJ (2010). Introgression of fitness genes across a ploidy barrier. *New Phytol* **186**: 63–71.

Chaudhary B, Flagel L, Stupar RM, Udall JA, Verma N, Springer NM, Wendel JF (2009). Reciprocal silencing, transcriptional bias and functional divergence of homeologs in polyploid cotton (*Gossypium*). *Genetics* **182**: 503–517.

Chester M, Gallagher JP, Symonds VV, Cruz da Silva AV, Mavrodiev EV, Leitch AR et al. (2012). Extensive chromosomal variation in a recently formed natural allopolyploid species, *Tragopogon miscellus* (Asteraceae). *Proc Natl Acad Sci* **109**: 1176–1181.

Clark LV, Jasieniuk M (2011). POLYSAT: an R package for polyploid microsatellite analysis. *Mol Ecol Resour* **11**: 562–566.

Comai L, Madlung A, Josefsson C, Tyagi A (2003). Do the different parental 'heteromes' cause genomic shock in newly formed allopolyploids? *Philos Trans R Soc Lond B Biol Sci* **358**: 1149–1155.

Cozzolino S, D'Emérico S, Widmer A (2004). Evidence for reproductive isolate selection in Mediterranean orchids: karyotype differences compensate for the lack of pollinator specificity. *Proc R Soc B Biol Sci* **271**(Suppl): S259–S262.

Cozzolino S, Cafasso D, Pellegrino G, Musacchio A, Widmer A (2003). Fine-scale phylogeographical analysis of Mediterranean *Anacamptis palustris* (Orchidaceae) populations based on chloroplast minisatellite and microsatellite variation. *Mol Ecol* **12**: 2783–2792.

Cozzolino S, Widmer A (2005). Orchid diversity: an evolutionary consequence of deception? *Trends Ecol Evol* **20**: 487–494.

De Hert K, Jacquemyn H, Van Glabeke S, Roldán-Ruiz I, Vandepitte K, Leus L et al. (2011). Patterns of hybridization between diploid and derived allotetraploid species of *Dactylorhiza* (Orchidaceae) co-occurring in Belgium. *Am J Bot* **98**: 946–955.

De Hert K, Jacquemyn H, Van Glabeke S, Roldán-Ruiz I, Vandepitte K, Leus L et al. (2012). Reproductive isolation and hybridization in sympatric populations of three *Dactylorhiza* species (Orchidaceae) with different ploidy levels. *Ann Bot* **109**: 709–720.

De Silva HN, Hall AJ, Rikkerink E, McNeillage MA, Fraser LG (2005). Estimation of allele frequencies in polyploids under certain patterns of inheritance. *Heredity* **95**: 327–334.

Delforge P (2001). *Guide des Orchidées d'Europe, d'Afrique du Nord et du Proche-Orient*. Delachaux et Niestlé: Lausanne & Paris.

Devos N, Raspé O, Oh S-H, Tyteca D, Jacquemart A-L (2006). The evolution of *Dactylorhiza* (Orchidaceae) allotetraploid complex: Insights from nrDNA sequences and cpDNA PCR-RFLP data. *Mol Phylog Evol* **38**: 767–778.

Doyle JJ, Doyle JL, Brown AHD (1999). Origins, colonization, and lineage recombination in a widespread perennial soybean polyploid complex. *Proc Natl Acad Sci USA* **96**: 10741–10745.

Doyle JJ, Doyle JL, Rauscher JT, Brown AHD (2004). Evolution of the perennial soybean polyploid complex (*Glycine* subgenus *Glycine*): a study of contrasts. *Biol J Linn Soc* **82**: 583–597.

Dufresne F, Stift M, Vergilino R, Mable BK (2014). Recent progress and challenges in population genetics of polyploid organisms: an overview of current state-of-the-art molecular and statistical tools. *Mol Ecol* **23**: 40–69.

Dupouey JL, Dambrine E, Laffite JD, Moares C (2002). Irreversible impact of past land use on forest soils and biodiversity. *Ecology* **83**: 2978–2984.

Earl DA, VonHoldt BM (2011). STRUCTURE HARVESTER: a website and program for visualizing STRUCTURE output and implementing the Evanno method. *Conserv Genet Resour* **4**: 359–361.

Ellis JR, Burke JM (2007). EST-SSRs as a resource for population genetic analyses. *Heredity* **99**: 125–132.

Esselink GD, Nybom H, Vosman B (2004). Assignment of allelic configuration in polyploids using the MAC-PR (microsatellite DNA allele counting-peak ratios) method. *Theor Appl Genet* **109**: 402–408.

Evanno G, Regnaut S, Goudet J (2005). Detecting the number of clusters of individuals using the software structure: a simulation study. *Mol Ecol* **14**: 2611–2620.

Feder JL, Egan SP, Nosil P (2012). The genomics of speciation-with-gene-flow. *Trends Genet* **28**: 342–350.

Ferdy J, Loriot S, Sandmeier M, Lefranc M, Raquin C (2001). Inbreeding depression in a rare deceptive orchid. *Can J Bot* **79**: 1181–1188.

Gaeta RT, Pires JC (2010). Homoeologous recombination in allopolyploids: the polyploid ratchet. *New Phytol* **186**: 18–28.

Giraudoux P (2013). pgrmss: Data analysis in Ecology. R package version 1.5.9. Available at <http://CRAN.R-project.org/package=pgrmss>.

Glennon KL, Church SA (2015). Gene flow contributes to genetic diversity of tetraploid populations of the North American plant genus *Houstonia* (Rubiaceae). *Rhodora* **117**: 41–66.

Goslee SC, Urban DL (2007). The ecodist package for dissimilarity-based analysis of ecological data. *J Stat Softw* **22**: 1–19.

Greaves IK, Groszmann M, Wang A, Peacock WJ, Dennis ES (2013). Inheritance of trans chromosomal methylation patterns from *Arabidopsis* F1 hybrids. *Proc Natl Acad Sci USA* **111**: 2017–2022.

Gutiérrez JP, Royo LJ, Alvarez I, Goyache F (2005). MolKin v2.0: a computer program for genetic analysis of populations using molecular coancestry information. *J Hered* **96**: 718–721.

Hedrén M (1996). Genetic differentiation, polyploidization and hybridization in northern European *Dactylorhiza* (Orchidaceae): Evidence from allozyme markers. *Plant Syst Evol* **201**: 31–55.

Hedrén M (2003). Plastid DNA variation in the *Dactylorhiza incarnata/maculata* polyploid complex and the origin of allotetraploid *D. sphagnicola* (Orchidaceae). *Mol Ecol* **12**: 2669–2680.

Hedrén M, Fay M, Chase M (2001). Amplified fragment length polymorphisms (AFLP) reveal details of polyploid evolution in *Dactylorhiza* (Orchidaceae). *Am J Bot* **88**: 1868–1880.

Hedrén M, Nordström S, Bateman RM (2011). Plastid and nuclear DNA marker data support the recognition of four tetraploid marsh orchids (*Dactylorhiza majalis* sl, Orchidaceae) in Britain and Ireland, but require their recircumscription. *Biol J Linn Soc* **104**: 107–128.

Hewitt GM (1999). Post-glacial re-colonization of European biota. *Biol J Linn Soc* **68**: 87–112.

Hultén E, Fries M (1986). *Atlas of North European Vascular Plants (North of the Tropic of Cancer)*, Vols. I–III, Koeltz Scientific Books: Königstein, Germany.

- Jablónka E, Raz G (2009). Transgenerational epigenetic inheritance: prevalence, mechanisms, and implications for the study of heredity and evolution. *Q Rev Biol* **84**: 131.
- Jakobsson M, Rosenberg NA (2007). CLUMPP: a cluster matching and permutation program for dealing with label switching and multimodality in analysis of population structure. *Bioinformatics* **23**: 1801–1806.
- Jersáková J, Malinová T (2007). Spatial aspects of seed dispersal and seedling recruitment in orchids. *New Phytol* **176**: 237–241.
- Jombart T, Pontier D, Dufour A (2009). Genetic markers in the playground of multivariate analysis. *Heredity* **102**: 330–341.
- Kropf M, Renner SS (2008). Pollinator-mediated selfing in two deceptive orchids and a review of pollinium tracking studies addressing geitonogamy. *Oecologia* **155**: 497–508.
- Kull T, Hutchings MJ (2006). A comparative analysis of decline in the distribution ranges of orchid species in Estonia and the United Kingdom. *Biol Cons* **129**: 31–39.
- Legendre P (2013). lmodel2: Model II Regression. R package version 1.7-2. Available at <http://CRAN.R-project.org/package=lmodel2>.
- Levin DA (2013). The timetable for allopolyploidy in flowering plants. *Ann Bot* **112**: 1201–1208.
- Lindborg R, Eriksson O (2004). Historical landscape connectivity affects present plant species diversity. *Ecology* **85**: 1840–1845.
- Lynch M, Force A (2000). The probability of duplicate gene preservation by subfunctionalization. *Genetics* **154**: 459–473.
- Madlung A, Wendel JF (2013). Genetic and epigenetic aspects of polyploid evolution in plants. *Cytogenet Genome Res* **140**: 270–285.
- Marcussen T, Oxelman B, Skog A, Jakobsen KS. (2010). Evolution of plant RNA polymerase IV/V genes: evidence of subneofunctionalization of duplicated NRPE2/NRPE2-like paralogs in *Viola* (Violaceae). *BMC Evol Biol* **10**: 45.
- McCormick M, Jacquemyn H (2014). What constrains the distribution of orchid populations? *New Phytol* **202**: 392–400.
- Megléc E, Costedoat C, Dubut V, Gilles A, Malausa T, Pech N *et al.* (2010). QDD: a user-friendly program to select microsatellite markers and design primers from large sequencing projects. *Bioinformatics* **26**: 403–404.
- Meimberg H, Rice KJ, Milan NF, Njoku CC, McKay JK (2009). Multiple origins promote the ecological amplitude of allopolyploid *Aegilops* (Poaceae). *Am J Bot* **96**: 1262–1273.
- Meirmans PG, Van Tienderen PH (2004). Genotype and Genodive: two programs for the analysis of genetic diversity of asexual organisms. *Mol Ecol Notes* **4**: 792–794.
- Meirmans PG, Van Tienderen PH (2013). The effects of inheritance in tetraploids on genetic diversity and population divergence. *Heredity* **110**: 131–137.
- Miller MA, Pfeiffer W, Schwartz T (2010). Creating the CIPRES Science Gateway for inference of large phylogenetic trees. *Proceedings of the Gateway Computing Environments Workshop (GCE)*, 14 November 2010. New Orleans, LA, USA. pp 1–8; doi:10.1109/gce.2010.5676129.
- Meyer P, Heidmann I, Niedenhof I (1993). Differences in DNA methylation are associated with a paramutation phenomenon in transgenic petunia. *Plant J* **4**: 89–100.
- Modliszewski J, Willis JH (2012). Allotetraploid *Mimulus sookensis* are highly interfertile despite independent origins. *Mol Ecol* **21**: 5280–5298.
- Moody ME, Mueller LD, Soltis DE (1993). Genetic variation and random drift in autotetraploid populations. *Genetics* **134**: 649–657.
- Nei M (1987). *Molecular Evolutionary Genetics*. Columbia University Press: New York, USA.
- Nordström S, Hedrén M (2007). Development of polymorphic nuclear microsatellite markers for polyploid and diploid members of the orchid genus *Dactylorhiza*. *Mol Ecol Notes* **7**: 644–647.
- Nordström S, Hedrén M (2008). Genetic differentiation and post-glacial migration of the *Dactylorhiza majalis* ssp. *traunsteineri/laponica* complex into Fennoscandia. *Plant Syst Evol* **276**: 73–87.
- Nordström S, Hedrén M (2009). Evolution, phylogeography and taxonomy of allopolyploid *Dactylorhiza* (Orchidaceae) and its implications for conservation. *Nord J Bot* **27**: 548–556.
- Nosil P, Funk DJ, Ortiz-Barrientos D (2009). Divergent selection and heterogeneous genomic divergence. *Mol Ecol* **18**: 375–402.
- Oka HI (1953). Phylogenetic differentiation of the cultivated rice plant VI. The mechanism of sterility in the intervarietal hybrid of rice. *Jpn J Breeding* **2**: 217–224.
- Otto SP (2007). The evolutionary consequences of polyploidy. *Cell* **131**: 452–462.
- Paun O, Bateman RM, Fay MF, Hedrén M, Civeyrel L, Chase MW (2010). Stable epigenetic effects impact adaptation in allopolyploid orchids (*Dactylorhiza*: Orchidaceae). *Mol Biol Evol* **27**: 2465–2473.
- Paun O, Bateman RM, Fay MF, Luna JA, Moat J, Hedrén M *et al.* (2011). Altered gene expression and ecological divergence in sibling allopolyploids of *Dactylorhiza* (Orchidaceae). *BMC Evol Biol* **11**: 113.
- Paun O, Fay MF, Soltis DE, Chase MW (2007). Genetic and epigenetic alterations after hybridization and genome doubling. *Taxon* **56**: 649–656.
- Peakall R, Smouse PE (2012). GenAlEx 6.5: genetic analysis in Excel. Population genetic software for teaching and research—an update. *Bioinformatics* **28**: 2537–2539.
- Perrie LR, Shepherd LD, De Lange PJ, Brownsey PJ (2010). Parallel polyploid speciation: distinct sympatric gene-pools of recurrently derived allo-octoploid *Asplenium* ferns. *Mol Ecol* **19**: 2916–2932.
- Petit C, Bretagnolle F, Felber F (1999). Evolutionary consequences of diploid-polyploid hybrid zones in wild species. *Trends Ecol Evol* **14**: 306–311.
- Phillips RD, Dixon KW, Peakall R (2012). Low population genetic differentiation in the Orchidaceae: implications for the diversification of the family. *Mol Ecol* **21**: 5208–5220.
- Pillon Y, Fay M, Hedrén M, Bateman R (2007). Evolution and temporal diversification of western European polyploid species complexes in *Dactylorhiza* (Orchidaceae). *Taxon* **56**: 1185–1208.
- Pritchard JK, Stephens M, Donnelly P (2000). Inference of population structure using multilocus genotype data. *Genetics* **155**: 945–959.
- R Core Team (2013). *R: A Language and Environment for Statistical Computing*. R Foundation for Statistical Computing: Vienna, Austria. Available at <https://www.R-project.org/>.
- Renaut S, Grassa CJ, Yeaman S, Moyers BT, Lai Z, Kane NC *et al.* (2013). Genomic islands of divergence are not affected by geography of speciation in sunflowers. *Nat Commun* **4**: 1827.
- Rosenberg NA (2004). Distruct: a program for the graphical display of population structure. *Mol Ecol Notes* **4**: 137–138.
- Shaked H, Kashkush K, Ozkan H, Feldman M, Levy AA (2001). Sequence elimination and cytosine methylation are rapid and reproducible responses of the genome to wide hybridization and allopolyploidy in wheat. *Plant Cell* **13**: 1749–1759.
- Siegel S, Castellan JNJ (1988). *Nonparametric Statistics for the Behavioral Sciences*. McGraw Hill: NY, USA.
- Sletvold N, Grindeland JM, Agren J (2010). Pollinator-mediated selection on floral display, spur length and flowering phenology in the deceptive orchid *Dactylorhiza lapponica*. *New Phytol* **188**: 385–392.
- Sletvold N, Agren J (2011). Nonadditive effects of floral display and spur length on reproductive success in a deceptive orchid. *Ecology* **92**: 2167–2174.
- Soltis DE, Soltis PS, Pires JC, Kovarik A, Tate J (2004). Recent and recurrent polyploidy in *Tragopogon* (Asteraceae): genetics, genomic, and cytogenetic comparisons. *Biol J Linn Soc* **82**: 485–501.
- Soltis DE, Buggs RJA, Doyle JJ, Soltis PS (2010). What we still don't know about polyploidy. *Taxon* **59**: 1387–1403.
- Soltis PS, Soltis DE (2009). The role of hybridization in plant speciation. *Annu Rev Plant Biol* **60**: 561–588.
- Soó R de (1980). *Dactylorhiza*. In: Tutin TG *et al.* (eds). *Flora Europea*, Vol 5, Cambridge University Press: Cambridge, UK. pp 333–337.
- Squirrel J, Hollingsworth PM, Bateman RM, Dickson JH, Light MHS, MacConaill M, Tebbit MC (2001). Partitioning and diversity of nuclear and organelle markers in native and introduced populations of *Epipactis helleborine* (Orchidaceae). *Am J Bot* **88**: 1409–1418.
- Ståhlberg D (2007). Habitat differentiation, hybridization and gene flow patterns in mixed populations of diploid and autotetraploid *Dactylorhiza maculata* s.l. (Orchidaceae). *Evol Ecol* **23**: 295–328.
- Stift M, Bregman R, Oostermeijer JGB, van Tienderen PH (2010). Other tetraploid species and conspecific diploids as sources of genetic variation for an autotetraploid. *Am J Bot* **97**: 1858–1866.
- Szpiech Z a, Jakobsson M, Rosenberg NA (2008). ADZE: a rarefaction approach for counting alleles private to combinations of populations. *Bioinformatics* **24**: 2498–2504.
- Takayama K, S PL, König C, Kohl G, Novak J, Stuessy TF (2011). A simple and cost-effective approach for microsatellite isolation in non-model plant species using small-scale 454 pyrosequencing. *Taxon* **60**: 1442–1449.
- Vanden Broeck A, Van Landuyt W, Cox K, De Bruyn L, Gyselings R, Oostermeijer G *et al.* (2014). High levels of effective long-distance dispersal may blur ecotypic divergence in a rare terrestrial orchid. *BMC Ecol* **14**: 20.
- Vandepitte K, Gristina AS, De Hert K, Meekers T, Roldán-Ruiz I, Honnay O (2012). Recolonization after habitat restoration leads to decreased genetic variation in populations of a terrestrial orchid. *Mol Ecol* **21**: 4206–4215.
- Via S (2012). Divergence hitchhiking and the spread of genomic isolation during ecological speciation-with-gene-flow. *Philos Trans R Soc Lond B Biol Sci* **367**: 451–460.
- Wu CI (2001). The genic view of the process of speciation. *J Evol Biol* **14**: 861–865.



This work is licensed under a Creative Commons Attribution 4.0 International License. The images or other third party material in this article are included in the article's Creative Commons license, unless indicated otherwise in the credit line; if the material is not included under the Creative Commons license, users will need to obtain permission from the license holder to reproduce the material. To view a copy of this license, visit <http://creativecommons.org/licenses/by/4.0/>

© The Author(s) 2016

Supplementary Information accompanies this paper on Heredity website (<http://www.nature.com/hdy>)