

Different modes of enhancer-specific regulation by Runt and Even-skipped during *Drosophila* segmentation

Saiyu Hang^{a,b,†} and J. Peter Gergen^{a,*}

^aDepartment of Biochemistry and Cell Biology and Center for Developmental Genetics and ^bGraduate Program in Biochemistry and Structural Biology, Stony Brook University, Stony Brook, NY 11794

ABSTRACT The initial metamer expression of the *Drosophila* *sloppy paired 1* (*slp1*) gene is controlled by two distinct *cis*-regulatory DNA elements that interact in a nonadditive manner to integrate inputs from transcription factors encoded by the pair-rule segmentation genes. We performed chromatin immunoprecipitation on reporter genes containing these elements in different embryonic genotypes to investigate the mechanism of their regulation. The distal early stripe element (DESE) mediates both activation and repression by Runt. We find that the differential response of DESE to Runt is due to an inhibitory effect of Fushi tarazu (Ftz) on P-TEFb recruitment and the regulation of RNA polymerase II (Pol II) pausing. The proximal early stripe element (PESE) is also repressed by Runt, but in this case, Runt prevents PESE-dependent Pol II recruitment and preinitiation complex (PIC) assembly. PESE is also repressed by Even-skipped (Eve), but, of interest, this repression involves regulation of P-TEFb recruitment and promoter-proximal Pol II pausing. These results demonstrate that the mode of *slp1* repression by Runt is enhancer specific, whereas the mode of repression of the *slp1* PESE enhancer is transcription factor specific. We propose a model based on these differential regulatory interactions that accounts for the nonadditive interactions between the PESE and DESE enhancers during *Drosophila* segmentation.

Monitoring Editor
Marianne Bronner
California Institute of
Technology

Received: Sep 2, 2016
Revised: Dec 13, 2016
Accepted: Jan 4, 2017

This article was published online ahead of print in MBoC in Press (<http://www.molbiolcell.org/cgi/doi/10.1091/mbc.E16-09-0630>) on January 11, 2017.

S.H. and J.P.G. designed experiments, which were carried out by S.H. S.H. and J.P.G. prepared the manuscript.

[†]Present address: Division of Infectious Diseases and Immunology, Department of Medicine, University of Massachusetts Medical School, Worcester, MA 01605

*Address correspondence to: J. Peter Gergen (john.peter.gergen@stonybrook.edu).

Abbreviations used: Cdk9, cyclin-dependent kinase 9; ChIP, chromatin immunoprecipitation; CTD, C-terminal domain; CycT, cyclin T; dCtBP, *Drosophila* C-terminal binding protein; DESE, distal early stripe element; DSIF, DRB sensitivity inducing factor; en, engrailed; Eve, Even-skipped; Ftz, Fushi tarazu; NELF, negative elongation factor; Opa, Odd-paired; PESE, proximal early stripe element; PIC, preinitiation complex; Pol II, RNA polymerase II; pSer2, phospho-serine-2; pSer5, phospho-serine-5; P-TEFb, positive transcription elongation factor b; Rpd3, reduced potassium dependency 3; *slp1*, *sloppy paired 1*; TBP, TATA-binding protein; TFIIIB, transcription factor II B; TFIIID, transcription factor II D; TFIIIF, transcription factor II F; TSS, transcription start site; wg, wingless.

© 2017 Hang and Gergen. This article is distributed by The American Society for Cell Biology under license from the author(s). Two months after publication it is available to the public under an Attribution-Noncommercial-Share Alike 3.0 Unported Creative Commons License (<http://creativecommons.org/licenses/by-nc-sa/3.0/>).

"ASCB®," "The American Society for Cell Biology®," and "Molecular Biology of the Cell®" are registered trademarks of The American Society for Cell Biology.

INTRODUCTION

The differential regulation of gene transcription is critically important for the development of multicellular organisms. The cycle of events that characterize transcription of protein-coding genes by RNA polymerase II (Pol II) can be divided into three phases: initiation, when Pol II is recruited to form a preinitiation complex (PIC) at the promoter and begins RNA synthesis; elongation, during which Pol II is modified into an elongating form and escapes the promoter; and termination, when both Pol II and the nascent RNA transcript are released from the DNA template. Each phase of this multistep process is subject to regulation (Core and Lis, 2008). Transcription regulation in eukaryotes involves interactions between sequence-specific DNA-binding transcription factors and *cis*-regulatory DNA elements referred to as enhancers, which can be located many kilobases upstream or downstream of the transcription start site (TSS). Although recent advances in genome-wide chromatin immunoprecipitation (ChIP)-chip analysis and the ENCODE and modENCODE projects have resulted in the identification of many enhancer elements (Roy *et al.*, 2010; Negre *et al.*, 2011), more studies are required to understand how these elements influence molecular

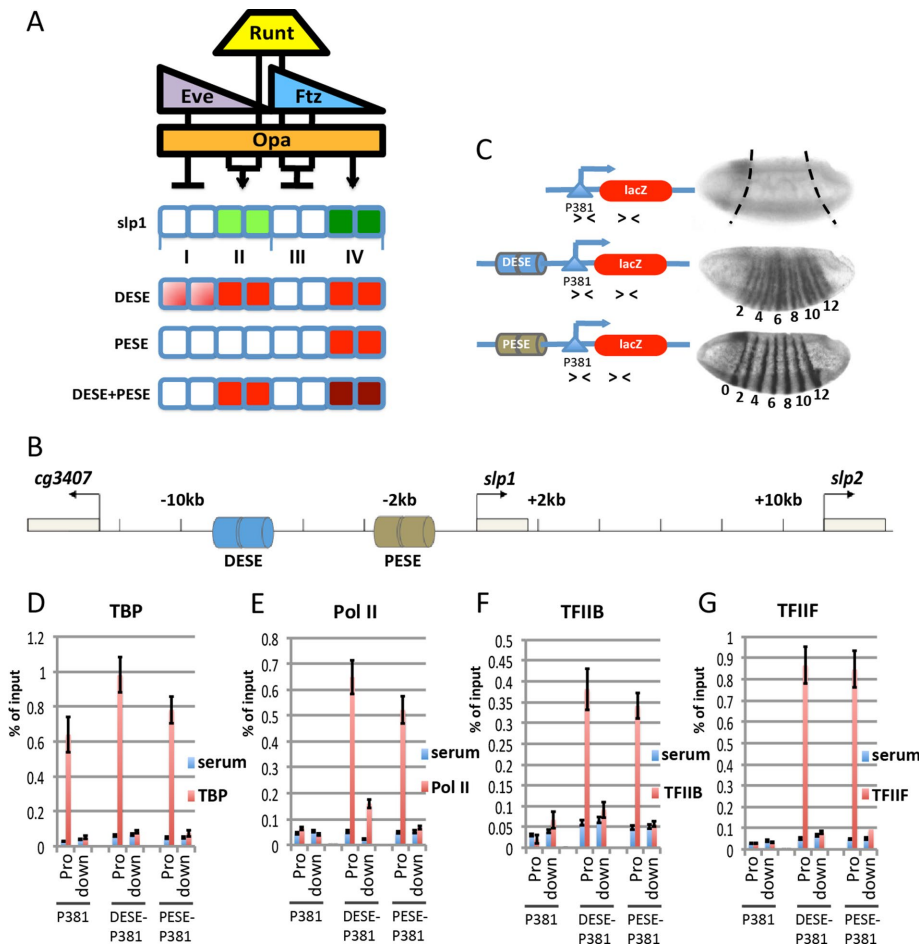


FIGURE 1: DESE and PESE stimulate preinitiation complex formation on the *slp1* promoter. (A) Rules for *slp1* regulation by Runt, Eve, Ftz, and Opa for an eight-cell unit spanning two parasegments along the anterior–posterior axis. The expression domains of these regulators are indicated above cells that express (green) or repress (white) *slp1* in four cell types, labeled I–IV, respectively. The expression patterns of reporter genes containing different *slp1* enhancers are depicted below, with *lacZ*-expressing cells shaded in red. (B) The *slp1* locus flanked by the *cg3407* and *slp2* genes, showing location of the DESE and PESE enhancers. (C) Expression of *slp1*[*p381*]*lacZ* (P381), *slp1*[*8765/p381*]*lacZ* (DESE-P381), or *slp1*[*3125/p381*]*lacZ* (PESE-P381) transgenes in stage 6 *Drosophila* embryos as visualized by in situ hybridization. Embryos are oriented anterior to the left, dorsal side up. Numbers beneath the embryos indicate even-numbered stripes. The schematic representations of these reporter constructs show the location of primers (arrowheads) used for qPCR to specifically detect the reporter gene promoter (Pro) and downstream (down) *lacZ* gene in ChIP assays. (D–G) Results of ChIP assays with control serum (blue bars) and antibodies specific for TBP, Pol II (8WG16), TFIIIB, and TFIIIF (red bars) using chromatin from embryos homozygous for the reporter genes shown in C.

events that occur at the promoter, in particular in animal cells, in which genes frequently contain multiple enhancers.

Many of the DNA-binding transcription factors that regulate gene expression during development can act either as activators or repressors, depending on the architecture of binding sites in the enhancer, the presence of other DNA-binding proteins, and other environmental cues (Umayahara *et al.*, 1994; Aronson *et al.*, 1997; Dubnicoff *et al.*, 1997; Porter *et al.*, 1997; Kramer *et al.*, 1999; Cheung *et al.*, 2005). Although the mechanism of activation and repression by different context-dependent regulators has been studied in several systems (Javed *et al.*, 2000; Peng and Jahroudi, 2002; Seufert *et al.*, 2005; Sakabe *et al.*, 2012), it is difficult to completely define or carefully control the in vivo cellular context. Studies of the *Drosophila* segmentation pathway have generated a rich framework

that provides advantages for investigating the properties of context-dependent transcription factors. For example, the dual-regulatory properties of Runt, the founding member of the Runx family of transcriptional regulators, are exemplified by the parasegment-specific effects of Runt on *engrailed* (*en*), *wingless* (*wg*), and *slp1* (Manoukian and Krause, 1993; Tracey *et al.*, 2000; Swantek and Gergen, 2004).

The 14-stripe *slp1* expression pattern in the late blastoderm embryo is generated in response to combinatorial regulation by Runt and three other pair-rule transcription factors: the Zn-finger transcription factor Odd-paired (Opa) and the homeodomain proteins Eve and Fushi tarazu (Ftz; Swantek and Gergen, 2004). The 14-stripe pattern consists of seven repetitive units, each containing four different cellular contexts for *slp1* transcription: type I cells are the two cells located in the anterior half of odd-numbered parasegments that do not express *slp1* (Figure 1A); type II cells comprise the posterior half of the odd-numbered parasegments and express the odd-numbered *slp1* stripes; type III cells comprise the anterior half of the even-numbered parasegments and do not express *slp1*; and type IV cells comprise the posterior half of the even-numbered parasegments and express the even-numbered *slp1* stripes. Different factors are responsible for *slp1* regulation in each of these four contexts. Eve represses *slp1* in type I cells, whereas repression in type III cells requires both Runt and Ftz. Expression of *slp1* in type II cells requires Runt in combination with Opa. Expression in type IV cells also depends on Opa, in this case without Runt but with a contribution from an as-yet-unidentified Factor X (Swantek and Gergen, 2004). Of importance, *slp1* responds to these four transcription factors in all somatic nuclei of late blastoderm-stage embryos, indicating that preexisting, spatially regulated epigenetic modifications in chromatin are not critical to *slp1* regulation during this stage of development.

Two distinct *cis*-acting DNA elements from the *slp1* locus that drive expression of stripes in the blastoderm embryo have been identified, and extensive genetic experiments have revealed how these elements respond to manipulations in the activity of the pair-rule transcription factors (Prazak *et al.*, 2010). The proximal early stripe element (PESE) enhancer, located between 3.1 and 2.5 kb upstream of the *slp1* TSS, drives expression in type IV cells, corresponding to the even-numbered *slp1* stripes (Figure 1, B and C). The distal early stripe element (DESE) enhancer, located between 8.1 and 7.2 kb upstream of the TSS (Figure 1B), drives expression in cells corresponding to both the odd- and even-numbered *slp1* stripes (type II and type IV cells) with stronger-than-normal expression of the odd stripes in cell type II. Of note, DESE also drives expression in type I cells, in which Eve normally represses *slp1*

(Figure 1, A and C). The inappropriate expression of the *DESE-lacZ* reporter gene in type I cells is due to the insensitivity of DESE to repression by Eve (Prazak *et al.*, 2010). A striking finding from this prior work is that a composite reporter construct containing both the DESE and PESE enhancers recapitulates the wild-type *slp1* pattern. Critical to understanding this nonadditive interaction is determining how PESE prevents inappropriate activity of DESE in Eve-expressing type I cells. Of importance, these results provide a platform for using genetic manipulations to investigate the *in vivo* mechanisms by which DESE and PESE mediate activation and repression in response to these different pair-rule transcription factors.

Here we combine genetic approaches with ChIP assays using chromatin from carefully staged embryos containing different *slp1* reporter genes to investigate the molecular mechanisms by which DESE and PESE regulate transcription in response to the pair-rule transcription factors in these different cellular contexts. We find that Runt represses DESE and PESE by two different mechanisms. Runt and Ftz repress DESE by antagonizing P-TEFb recruitment and preventing release of promoter-proximal paused Pol II. In contrast, Runt prevents PESE-dependent recruitment of Pol II and other PIC components. PESE-dependent transcription is also repressed by Eve. However, in this case, the repression is due to antagonism of P-TEFb recruitment and a block to release of promoter-proximal paused Pol II. On the basis of these findings, we propose a model for how these two enhancers contribute to regulating transcription of the endogenous *slp1* gene in these four different cellular contexts. This model strongly suggests that regulation of Pol II pausing has an unappreciated and potentially widespread role in restricting gene expression in developmental systems.

RESULTS

DESE and PESE facilitate PIC assembly on the *slp1* promoter

Studies on *slp1* cis-regulatory architecture have used both conventional P-element and Φ C31-mediated transgenic approaches with different basal promoter segments (Prazak *et al.*, 2010; Fujioka and Jaynes, 2012). To better compare results of ChIP assays done with different reporter genes, we used Φ C31-mediated transgenesis to integrate different constructs into the same *P{CaryP}attP2* landing site. The backbone construct for these experiments was a *lacZ* reporter with a promoter-containing DNA segment that spans from 260 base pairs upstream to 121 base pairs downstream of the *slp1* TSS. A reporter gene containing only this region, *slp1[p381]lacZ*, is expressed at low levels in a dorsal anterior patch of cells, with no expression throughout the presumptive segmented region of the embryo (Figure 1C). This observation agrees with previous findings (Prazak *et al.*, 2010; Fujioka and Jaynes, 2012) and indicates that this promoter-containing DNA segment does not by itself respond to the pair-rule gene regulatory circuitry.

DESE was originally identified within a DNA segment extending from 8.7 to 6.5 kb upstream of the *slp1* TSS. A reporter with this DNA segment, *slp1[8765/p381]lacZ*, generated the characteristic DESE-driven pattern with strong expression of both odd- and even-numbered stripes in type II and type IV cells, respectively, along with inappropriate expression in type I cells anterior to the odd stripes (Figure 1C). Similarly, inclusion of a PESE-containing segment that extends from 3.1 to 2.5 kb upstream of the TSS in the *slp1[3125/p381]lacZ* reporter resulted in expression of only the even-numbered stripes in type IV cells (Figure 1C). These results confirm observations made with other basal promoter segments and provide a starting point for using ChIP assays to investigate the effects of these two enhancer elements on the association of

different components of the transcriptional machinery with the *slp1* promoter.

We used chromatin from carefully staged collections of *Drosophila* embryos to investigate the effects of DESE and PESE on association of Pol II and other general transcription factors with the p381 promoter. TBP, the TATA-binding component of TFIID, was associated with the promoter region of all three reporters (Figure 1D). The specificity of this association is confirmed by the lack of a ChIP signal, using primers from the downstream *lacZ* gene (Figure 1D). In contrast to the results with TBP, there was little association of Pol II, TFIIB, or TFIIF with the promoter region of the *slp1[p381]lacZ* reporter (Figure 1, E–G). Of importance, inclusion of either DESE or PESE increased association of all three factors with the promoter. As expected, the TFIIB and TFIIF signals were specific for the promoter regions (Figure 1, F and G), whereas a modest increase in association of Pol II with the *lacZ* structural gene is detected for the more widely expressed DESE-containing reporter gene (Figure 1E). On the basis of these results, we conclude that p381 is sufficient for recruiting TBP and that DESE and PESE act to stimulate the recruitment and/or stabilize the association of Pol II and other PIC components with the *slp1* promoter.

Runt and Ftz repress DESE by preventing release of promoter-proximal paused Pol II

Ectopic coexpression of Runt and Ftz using the NGT maternal GAL4 expression system (Tracey *et al.*, 2000) results in uniform *slp1* repression in all somatic cells of the late blastoderm-stage embryo (Swantek and Gergen, 2004). This approach was previously used to demonstrate that *slp1* repression by Runt and Ftz occurs downstream of Pol II recruitment and the initiation of transcription and involves preventing release of promoter-proximal paused Pol II into active elongation (Wang *et al.*, 2007). The DESE-containing *slp1[8765/p381]lacZ* reporter recapitulated the repression of *slp1* by Runt and Ftz (Figure 2A). ChIP assays showed no difference in association of either TBP (Figure 2B) or Pol II (Figure 2C) with the reporter gene promoter in Runt and Ftz-coexpressing (RF) embryos, in which the reporter gene is repressed, versus the ChIP signal obtained in wild-type (WT) embryos, which express the reporter in multiple cell types. Repression by Runt and Ftz did reduce the more modest ChIP signal for Pol II association with the *lacZ* structural gene that is observed in WT embryos to background levels (Figure 2C). Of importance, repression by Runt and Ftz also increased the ChIP signals on the *slp1[8765/p381]lacZ* promoter for Pol II containing the phospho-Ser-5 (pSer5) modification on the C-terminal domain (CTD) and for a subunit of the negative elongation factor NELF (Figure 2, D and E). The CTD pSer5 modification is a signature of transcription initiation, and association with NELF is a hallmark of Pol II pausing (Saunders *et al.*, 2006; Hirose and Ohkuma, 2007; Lee *et al.*, 2008). These results mirror those obtained previously for *slp1* and indicate that Runt and Ftz repress DESE-driven expression by preventing release of promoter-proximal paused Pol II.

DSIF and P-TEFb are two additional protein complexes involved in promoter-proximal pausing. Similar to NELF, DSIF is associated with paused Pol II and is believed to inhibit elongation (Saunders *et al.*, 2006). However, unlike NELF, DSIF remains associated with elongating complexes that have been released from the promoter (Andrulis *et al.*, 2000). Association of the Spt5 subunit of DSIF with the *slp1[8765/p381]lacZ* promoter was not affected in RF embryos, although repression did result in reduced Spt5 association with the *lacZ* structural gene (Figure 2F). P-TEFb, a protein kinase complex comprising Cdk9 and cyclin T (CycT), is responsible for phosphorylating Ser-2 residues within the Pol II CTD, a

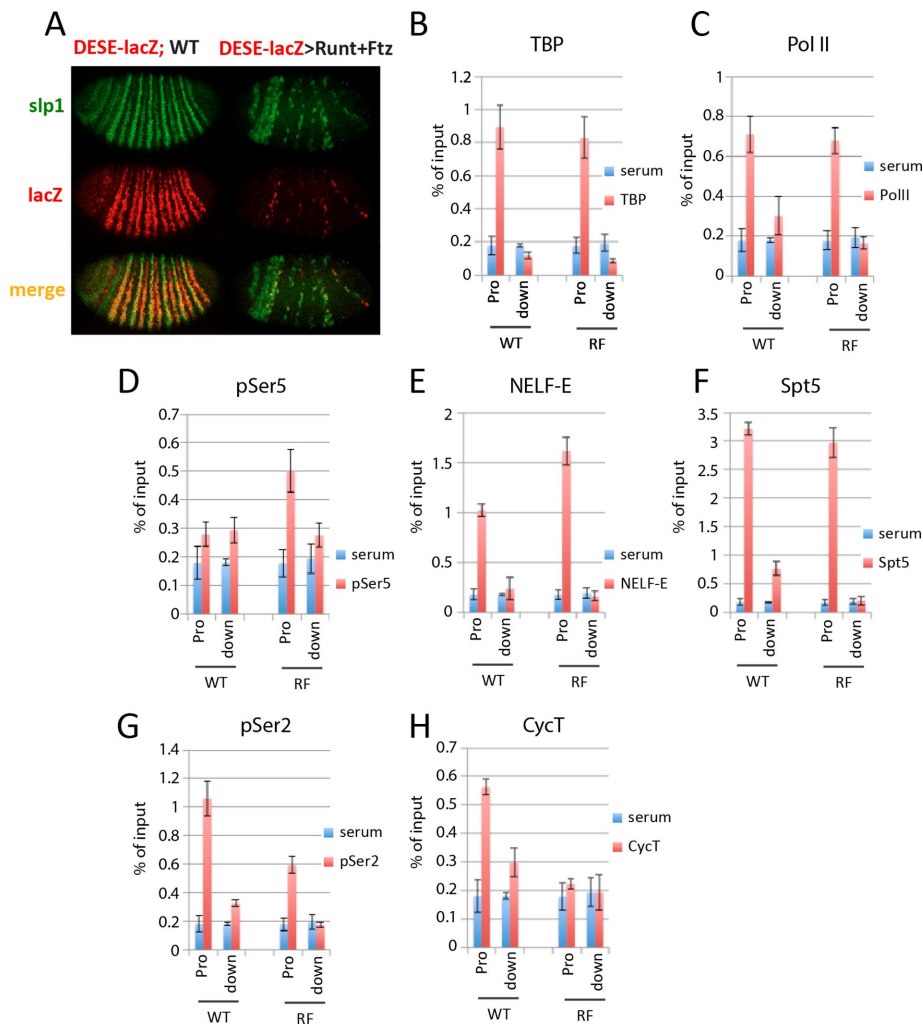


FIGURE 2: Runt and Ftz repress DESE by blocking paused Pol II release. (A) In situ hybridization showing *slp1* (green) and *slp1*[8765/p381]*lacZ* (DESE-lacZ; red) expression in a wild-type (WT) embryo and in response to NGT-driven coexpression of Runt and Ftz. The WT (left) embryo was from a cross between homozygous *NGT*[40]; *slp1*[8765/p381]*lacZ* *NGT*[A] females and WT males. The embryo with ectopic expression of Runt and Ftz (right) was from a cross between females of the same genotype with homozygous *UAS-runt*[232]; *UAS-ftz*[263] males. (B–H) Results of ChIP assays with control serum (blue bars) and antibodies against (red bars) TBP (B), Pol II antibody 8WG16 (C), Pol II antibody H14 (D), NELF-E (E), Spt5 (F), Pol II antibody ab5095 (G), and CycT (H), using primers to detect the promoter and downstream *lacZ* gene of the *slp1*[8765/p381]*lacZ* reporter. Chromatin from WT and Runt plus Ftz-repressed (RF) embryos was obtained from the same crosses as in A.

modification that releases polymerase from the negative effect of NELF and DSIF and is found on elongating Pol II (Lis *et al.*, 2000; Hirose and Ohkuma, 2007). Repression by Runt and Ftz reduced association of both pSer-2-modified Pol II and CycT with the *slp1*[8765/p381]*lacZ* promoter (Figure 2, G and H). These results provide additional evidence that DESE-mediated repression by Runt and Ftz involves preventing release of promoter-proximal paused Pol II and further suggest that this is due to inhibition of P-TEFb recruitment.

Activation by Runt is associated with increased P-TEFb recruitment

P-TEFb recruitment is a well-documented rate-limiting step for transcription (Bieniasz *et al.*, 1999; Majello *et al.*, 1999; Lis *et al.*, 2000; Chao and Price, 2001). DESE also mediates Runt-dependent activa-

tion and drives expression in all somatic blastoderm cells that have Runt and Opa and do not express Ftz (Prazak *et al.*, 2010), a regulatory response that faithfully recapitulates the response of the endogenous *slp1* gene to this specific combination of these three pair-rule transcription factors. We wondered whether Runt-dependent activation of DESE and, by extension, the activation of the endogenous *slp1* gene involve P-TEFb recruitment. To investigate this, we used the *NGT* system to generate embryos that in addition to Runt and Opa also coexpress the pair-rule transcription factor Hairy. One function of *hairy* is to repress *ftz* (Howard and Ingham, 1986; Ish-Horowitz and Pinchin, 1987; Tsai and Gergen, 1995), which in turn should allow for activation of *slp1* by Runt and Opa in cells in which Ftz is repressed, that is, in nearly all cells of these ROH embryos (Figure 3A). ChIP assays revealed increased Pol II association with the *slp1* promoter in *slp1*-expressing ROH embryos compared with both WT and RF embryos (Figure 3B). Of importance, the ROH embryos also showed increased ChIP signals relative to those from WT and RF embryos for pSer-2 (Figure 3C) and CycT (Figure 3D). These results provide strong evidence that the effect of Ftz on Runt's dual role in *slp1* regulation involves differential recruitment of P-TEFb.

Runt-dependent repression of PESE occurs upstream of transcription initiation

Reporter genes containing the *slp1* PESE enhancer are also repressed by Runt (Prazak *et al.*, 2010). Thus, as expected, the PESE-containing *slp1*[3125/p381]*lacZ* reporter is repressed by coexpression of Runt and Ftz (Figure 4A). However, ChIP assays revealed that this repression involves a different mechanism because *NGT*-driven coexpression of Runt and Ftz reduced association of TBP and Pol II with the promoter region of the *slp1*[3125/

p381]*lacZ* reporter gene (Figure 4, B and C). The reduction of promoter-associated Pol II suggests that assembly of a PESE-dependent PIC is disrupted in these embryos. Consistent with this, promoter association of TFIIIB and TFIIIF was reduced to background levels, and association of both the pSer-5- and pSer-2-modified forms of Pol II with this PESE-containing reporter is reduced in response to this repression (Figure 4, D–G). It is notable that TBP association with the reporter gene promoter was reduced in the repressed RF embryos because a reporter gene lacking either PESE or DESE and containing only the p381 *slp1* basal promoter segment was sufficient for TBP recruitment (Figure 1D). Although further studies are needed to understand the mechanism by which Runt represses PESE, we conclude that this occurs upstream of transcription initiation and does not involve regulation of Pol II pausing.

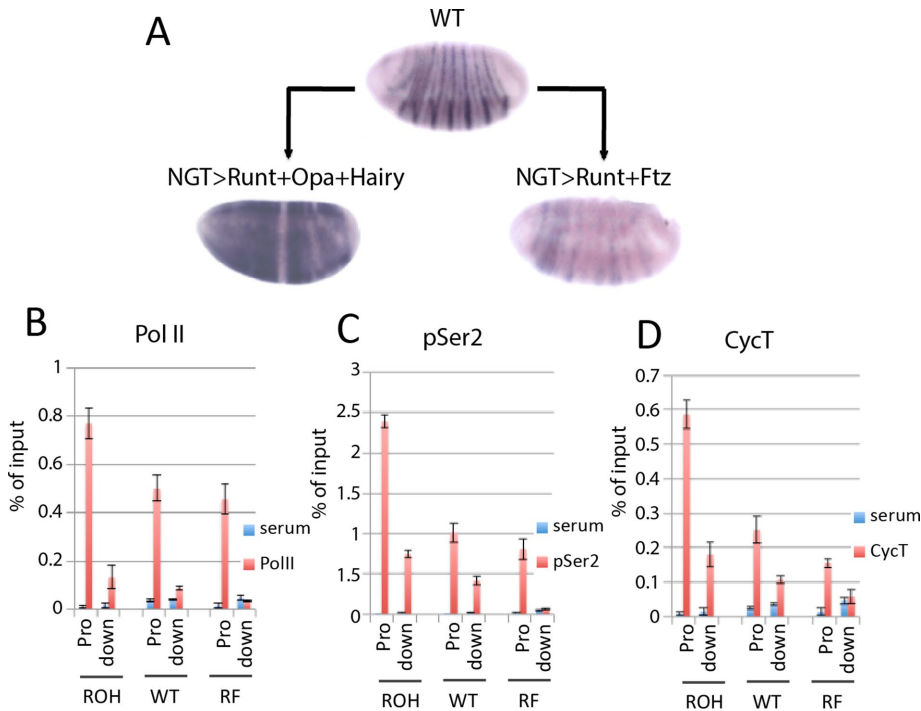


FIGURE 3: P-TEFb recruitment is central to Runt-dependent *slp1* regulation. (A) In situ hybridization showing *slp1* mRNA expression in WT embryos compared with those with NGT-driven coexpression of Runt, Opa, and Hairy (ROH) or Runt and Ftz (RF). ROH embryos were produced by crossing homozygous *NGT[40]; NGT[A]* females to homozygous *UAS-runt[232] UAS-hairy[211]; UAS-opa[D10]* males. RF embryos were produced by crossing homozygous *NGT[40]; NGT[A]* females to homozygous *UAS-runt[232]; UAS-ftz[263]* males. (B–D) Results of ChIP assays with control serum (blue bars) and (red bars) Pol II antibody 8WG16 (B), Pol II antibody ab5095 (C), and antisera against CycT (D), using chromatin from ROH, WT, and RF embryos as indicated. ChIP signal detected at the *slp1* promoter (Pro) and with a region of the *slp1* structural gene 700 base pairs downstream (down) of the TSS.

Runt and Ftz are both required to repress endogenous *slp1* in type III cells, as expression is derepressed in embryos that are mutant for either factor (Prazak *et al.*, 2010). Of interest, the PESE-containing *slp1[3918]lacZ* reporter shows little evidence of derepression in *ftz* mutants (Figure 4H). This observation suggests that Ftz is not required for the Runt-dependent repression of PESE in these cells. To further investigate whether PESE contributes to the Ftz-dependent repression of endogenous *slp1* in type III cells, we took advantage of the differential sensitivity of the DESE and PESE enhancers to repression by Eve. NGT-driven Eve expression had little effect on the derepression of *slp1* observed in *ftz* mutants, whereas the PESE-containing *slp1[3918]lacZ* reporter was fully repressed in these same embryos (Figure 4H). These results strongly suggest that DESE is responsible for the *slp1* expression observed in presumptive type III cells in *ftz* mutant embryos and provide a second indication that the mechanism of repression by Runt is different for the DESE and PESE enhancers. Runt-dependent repression of DESE requires Ftz and involves preventing release of promoter-proximal paused Pol II. In contrast, Runt-dependent repression of PESE does not require Ftz and is due to a failure to recruit Pol II and other PIC components to the promoter.

Eve represses PESE by preventing release of promoter-proximal paused Pol II

Eve is responsible for *slp1* repression in type I cells (Swantek and Gergen, 2004). The PESE-containing *slp1[3125/p381]lacZ* reporter faithfully recapitulated the derepression observed for *slp1* in pre-

sumptive type I cells in response to a transient loss of *eve* and also recapitulated the loss of expression of the even-numbered stripes in presumptive type IV cells in response to ectopic Eve (Figure 5A). As shown earlier, this reporter is repressed by Runt. Therefore, to investigate the molecular basis for Eve-dependent repression independent of the effects of Runt, we used a PESE construct deleted for regions required for repression by Runt. This reporter, *slp1[PESE:C1+]lacZ^{att}*, fails to be repressed in Runt-expressing type III cells in wild-type embryos, is uniformly expressed throughout the presumptive segmented region of the embryo in response to the transient elimination of *eve* (Prazak *et al.*, 2010), and is also repressed in all of these cells in response to ectopic Eve (Figure 5B). ChIP assays revealed that repression by Eve does not affect association of either TBP or Pol II with the reporter gene promoter (Figure 5, C and D). These results are similar to those obtained for DESE-mediated repression by Runt and Ftz, suggesting that Eve represses this reporter by preventing release of promoter-proximal paused Pol II. In support of this, repression by Eve increased association of pSer5–modified Pol II and NELF-E with the *slp1[PESE:C1+]lacZ^{att}* promoter (Figure 5, E and F). Repression by Eve had little effect on association of the Spt5 subunit of DSIF with the promoter region and specifically reduced association of this elongation factor with the downstream *lacZ* gene (Figure 5G). Finally, ChIP signals for

both the pSer2–modified form of Pol II and the CycT subunit of P-TEFb were significantly lower at the reporter gene promoter and reduced to background levels within the downstream *lacZ* gene in response to ectopic Eve (Figure 5, H and I). On the basis of these results, we conclude that Eve represses PESE-dependent transcription by preventing release of promoter-proximal paused Pol II and propose that this is due to inhibition of P-TEFb recruitment.

DISCUSSION

The studies presented here take advantage of two key attributes of the *slp1* gene as a model for investigating the mechanisms of transcriptional regulation by Runt and other pair-rule transcription factors during *Drosophila* segmentation. The circuitry for the initial regulation of *slp1* is relatively simple and involves only the pair-rule transcription factors Runt, Eve, Ftz, and Opa. This is in contrast to the segment-polarity genes *en* and *wg*, which also respond to regulatory inputs from Odd-skipped and Paired, neither of which is involved in the initial regulation of *slp1*. This simple combinatorial code allows for genetic manipulations that essentially convert the blastoderm embryo into an in vivo test tube for studies on transcription regulation using molecular techniques such as ChIP. A second key attribute of *slp1* is the identification of two distinct *cis*-regulatory DNA elements that together faithfully recapitulate the regulation of *slp1* in response to the pair-rule transcription factors. The focus of the experiments presented here has been to investigate the mechanism of regulation of the *slp1* DESE and PESE enhancers by Runt and these other pair-rule transcription factors.

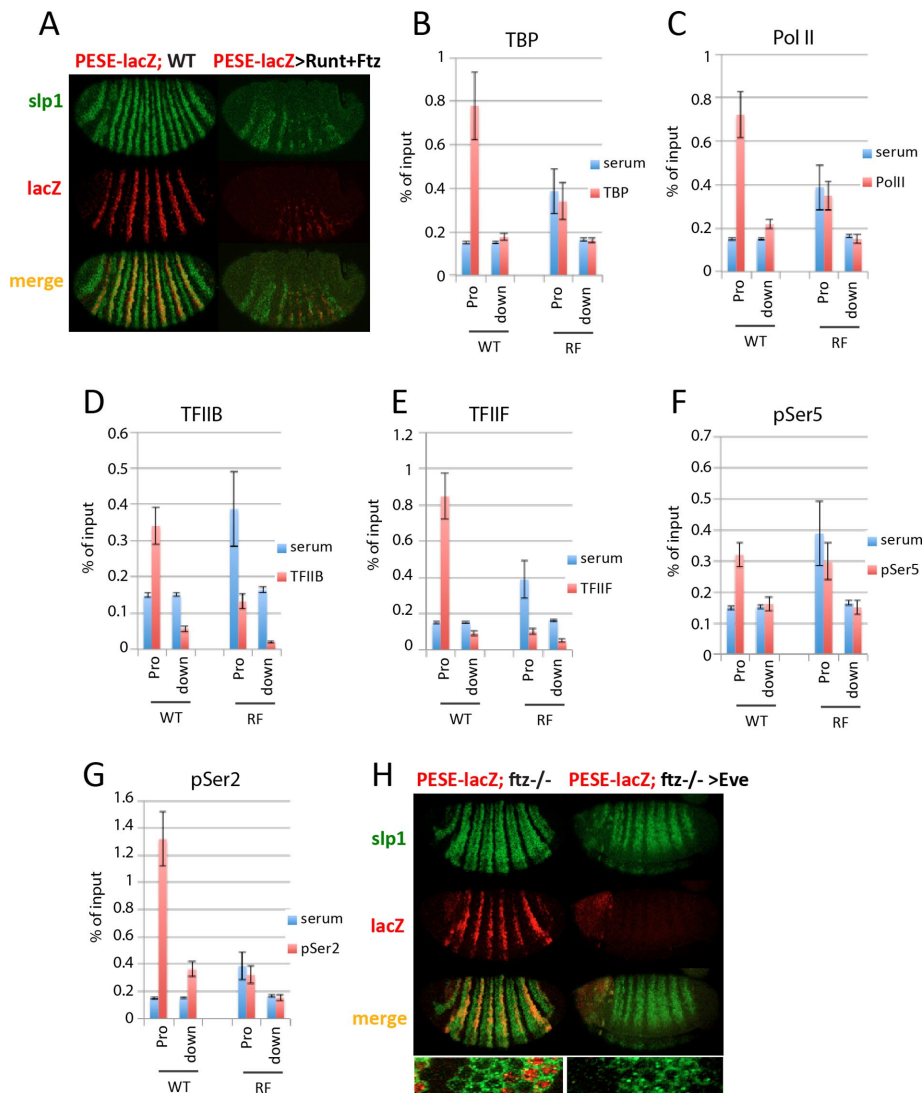


FIGURE 4: Runt represses PESE by a different mechanism. (A) In situ hybridization showing *slp1* (green) and *slp1*[3125/*p381*]*lacZ* (PESE-*lacZ*; red) expression in WT and in response to NGT-driven coexpression of Runt and Ftz. The WT embryo (left) was from a cross between homozygous *NGT*[40]; *slp1*[3125/*p381*]*lacZ* females and WT males. The Runt plus Ftz embryo (right) was from a cross between similar females and homozygous *UAS-runt*[232]; *UAS-ftz*[263] males. (B–G) Results of ChIP assays with control serum (blue bars) and antibodies against (red bars) TBP (B), Pol II antibody 8WG16 (C), TFIIIB (D), TFIIIF (E), Pol II antibody H14 (F), and Pol II antibody ab5095 (G) using chromatin from WT and *slp1*-repressed embryos. WT embryos were from a stock homozygous for the reporter gene. RF embryos were from the same cross as in A. It is notable that the reporter gene promoter region consistently gave higher background signals in RF embryos than in WT embryos. One explanation is that the solubility of chromatin containing the *slp1*[3125/*p381*]*lacZ* promoter is affected in RF embryos. (H) In situ hybridization showing *slp1* (green) and *slp1*[3918/*p126*]*lacZ*^{att} (PESE-*lacZ*; red) expression in *ftz* mutants in the absence (left) and presence (right) of ectopic Eve. Inset, merged patterns for a region containing one six-cell-wide *slp1* stripe. These embryos are from a cross between *NGT*[40]; *slp1*[3918/*p126*]*lacZ*^{att} *ftz*[11]/*TM3* females and males heterozygous for the second chromosome *UAS-eve*[12] transgene and the *slp1*[3918/*p126*]*lacZ*^{att} *ftz*[11] third chromosome. In this cross, one-fourth of the progeny are mutant for *ftz* and can be unambiguously identified based on the derepression of the endogenous *slp1* gene. These *ftz* mutant embryos are also homozygous for the PESE-*lacZ* reporter. Half of the progeny from this cross express Eve from the *UAS-eve*[12] transgene. Derepression of *slp1* as shown in H was observed in 25% of similarly staged embryos from this cross; half of these embryos expressed the even-numbered PESE-*lacZ* stripes, whereas the other half failed to express *lacZ*.

The results of these experiments provide new insights into the role of repression by these pair-rule transcription factors in establishing the initial metamer *slp1* expression pattern. The PESE en-

hancer, which normally drives expression in the type IV cells that express the even-numbered *slp1* stripes, is repressed by both Runt and Eve, but, of importance, these two transcription factors repress this enhancer by two different mechanisms. Runt prevents PESE-dependent recruitment of Pol II and PIC assembly at the promoter, whereas Eve represses PESE by preventing release of promoter-proximal paused Pol II. Runt also represses DESE, but this is by a mechanism distinct from that used by Runt to repress PESE. Runt-dependent repression of DESE requires Ftz and, similar to Eve-dependent repression of PESE, involves preventing the release of promoter-proximal paused Pol II.

Regulation of paused Pol II release by Eve, Ftz, and Runt

Regulating the release of promoter-proximal paused Pol II has emerged as a widespread phenomenon, especially in developmental systems (Guenther *et al.*, 2007; Muse *et al.*, 2007; Wang *et al.*, 2007; Zeitlinger *et al.*, 2007; Core and Lis, 2008; Gilmour, 2009; Chiba *et al.*, 2010). Our results extend previous findings that Runt and Ftz repress *slp1* during *Drosophila* segmentation by preventing release of promoter-proximal paused Pol II (Wang *et al.*, 2007) and further indicate that this repression is mediated by the *slp1* PESE enhancer. Of interest, we found that expression driven by the *slp1* PESE enhancer can also be repressed by preventing release of promoter-proximal paused Pol II, but in this case, the repression is due to Eve. A shared feature in the regulated release of paused Pol II by these pair-rule transcription factors is the central role of P-TEFb recruitment. P-TEFb is one of three protein complexes associated with promoter-proximal pausing and is the only factor known to convert paused Pol II complexes into productive elongation (Price, 2008). Although it is possible that differential recruitment of negative factors such as DSIF and NELF could contribute to this regulation, it is questionable whether this occurs under normal cellular conditions (Price, 2008). We found that Runt-dependent repression of DESE correlates with reduced association of the CycT subunit of P-TEFb with the promoter and a corresponding decrease of pSer2-modified Pol II (Figure 2, G and H). Runx1-dependent repression of *CD4* also involves regulation of Pol II pausing (Jiang *et al.*, 2005), and targeting Runx1 to either the promoter or the *CD4* silencer interferes with transcription in a manner that

appears to involve direct interactions with the CycT subunit of P-TEFb. These observations suggest that antagonism of P-TEFb activity is a conserved property of the Runx proteins. However, DESE also

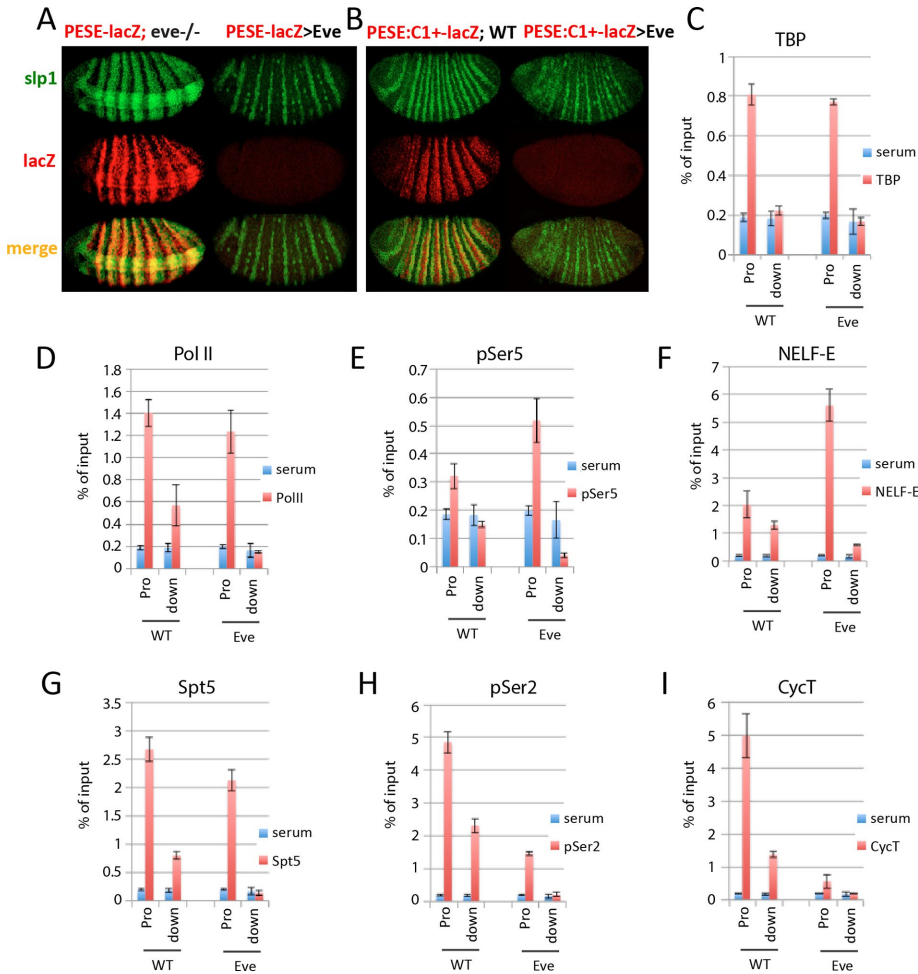


FIGURE 5: Eve represses PESE by blocking paused Pol II release. (A) Fluorescence in situ hybridization showing *slp1* (green) and the *slp1*[3125/p381]*lacZ* (PESE-*lacZ*; red) expression in embryos mutant for *eve* (left) and in response to NGT-driven Eve (right). The *eve* mutant embryos were collected from a cross between flies doubly heterozygous for the temperature-sensitive *eve*[1] mutation and the reporter gene. Transient elimination of *eve* was accomplished by collecting embryos for 2 h at 25°C, allowing them to develop an additional 4 h at 18°C, and then shifting to 30°C for 20 min immediately before fixation and processing for in situ hybridization. The response of the reporter gene to ectopic Eve was examined in embryos from a cross between homozygous *NGT*[40]; *slp1*[3125/p381]*lacZ* females and homozygous *UAS-eve*[12] males. The ectopic Eve in these embryos repressed the even-numbered *slp1* stripes and also eliminated expression of this PESE-*lacZ* reporter in presumptive type IV cells but did not prevent expression of the odd-numbered *slp1* stripes in type II cells. (B) Fluorescence in situ hybridization shows *slp1* (green) and the *slp1*[PESE:C1+]*lacZ*^{att} (PESE:C1+-*lacZ*; red) expression in WT embryos (left) and in response to ectopic Eve (right). These embryos were collected from a cross between homozygous *NGT*[40]; *slp1*[PESE:C1+]*lacZ*^{att} females and either WT or homozygous *UAS-eve*[12] males, respectively. The insensitivity of this reporter to repression by Runt results in expanded four-cell-wide stripes in WT embryos due to derepression in type III cells. As observed in A, ectopic Eve specifically repressed the even-numbered *slp1* stripes, as well as all expression from the PESE:C1+-*lacZ* reporter. (C–I) Results of ChIP assays with control serum (blue bars) and antibodies against (red bars) TBP (C), Pol II antibody 8WG16 (D) Pol II antibody H14 (E), NELF-E (F), Spt5 (G), Pol II antibody ab5095 (H), and CycT (I) using primers to detect the promoter and downstream *lacZ* gene of the PESE:C1+-*lacZ* reporter. Chromatin from WT and Eve-repressed (Eve) embryos was obtained from the same crosses as in B.

mediates Runt-dependent *slp1* activation (Prazak et al., 2010), and this involves increased association of pSer2–modified Pol II and CycT with the promoter (Figure 3, C and D). The key difference between Runt-dependent repression and activation of DESE is the presence or absence of Ftz (Swantek and Gergen, 2004; Prazak et al., 2010). Thus Ftz is implicated as directly or indirectly antago-

nizing recruitment of CycT, and, by extension, P-TEFb, to the *slp1* promoter in Runt-expressing cells. Eve-dependent repression of PESE also results in reduced promoter association of CycT and pSer2–modified Pol II (Figure 5, H and I). Eve interacts with TBP, which has been interpreted as evidence that Eve may prevent PIC formation (Han and Manley, 1993; McKay et al., 1999). Alternatively, this could be a strategy to augment interactions between Eve-associated PESE and the *slp1* promoter. In any event, with these results, the *slp1* enhancers now provide a useful platform for investigating the in vivo regulation of P-TEFb recruitment by these different transcription factors.

Different modes of repression by Runt

It is interesting to consider the different modes of *slp1* repression in light of previous findings on Runt's properties as a transcriptional regulator. Runt interacts with the corepressor protein Groucho via a conserved C-terminal VWRPY motif (Aronson et al., 1997). This interaction is important for maintaining the Runt-dependent repression of *en*, a process that is also sensitive to the dosage of the corepressors Rpd3 and dCtBP (Wheeler et al., 2002). Of interest, the VWRPY motif has no role in *slp1* repression but instead appears to contribute to *slp1* activation (Walrad et al., 2010). Studies on other transcription factors in the early *Drosophila* embryo identified two modes of repression. Short-range repressors, typified by the gap gene transcription factors Giant and Knirps, are believed to interfere with the function of nearby bound activators, whereas long-range repressors, typified by the pair-rule transcription factor Hairy, have the ability to act over distances of several hundred base pairs through chromatin modifications (Hewitt et al., 1999; Strunk et al., 2001; Li and Arnosti, 2011). The minimal 272–base pair PESE:C1+ element contains the 155–base pair PESE:C1 region required for PESE-dependent activation plus distal and proximal extensions of 44 and 73 base pairs, respectively (Prazak et al., 2010). The observation that the PESE:C1+ element is not sensitive to repression by Runt indicates that the regions of PESE involved in mediating repression by Runt are not directly adjacent to sites within the smaller C1 interval that are required for activation. This observation

is consistent with the idea that Runt may repress PESE by a long-range mechanism. In contrast, the PESE:C1+ element is fully capable of mediating repression by Eve, suggesting that this repression may involve a shorter-range mechanism. It will be of great interest to determine whether Runt and Eve both interact directly with the PESE enhancer and, if they do, to map the relative location of their

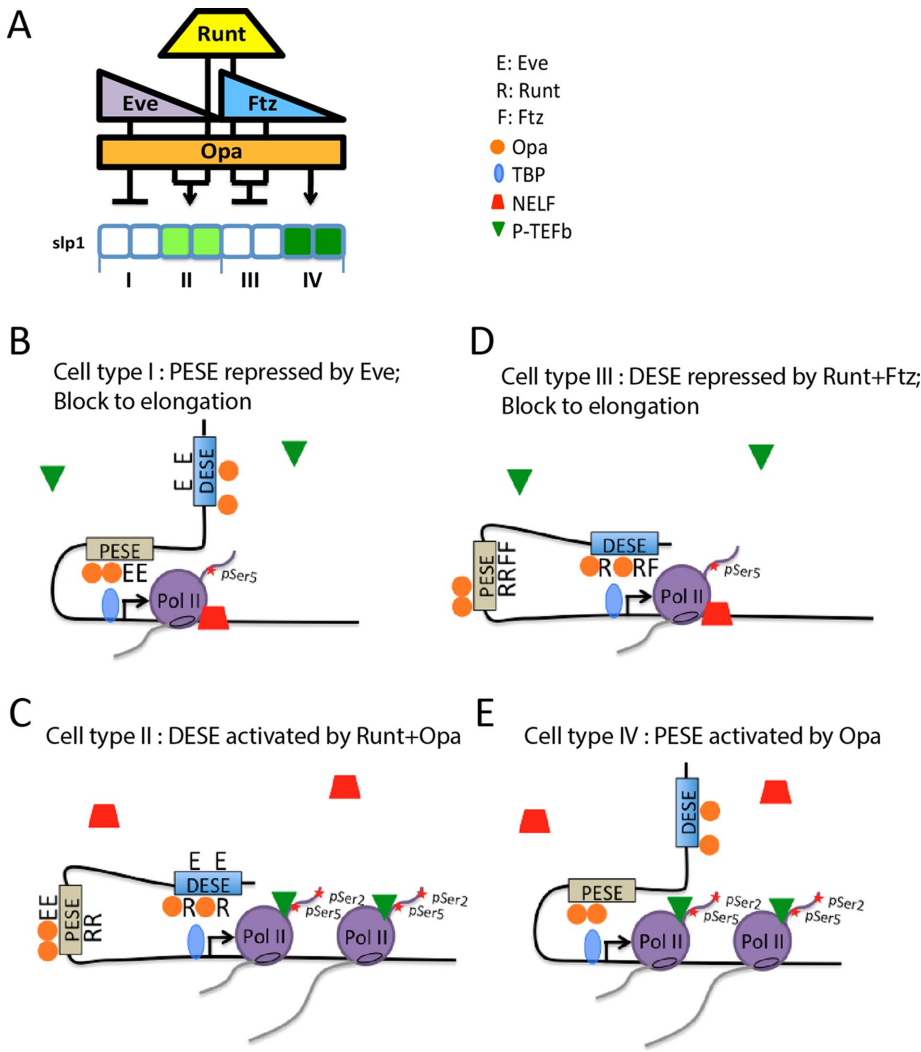


FIGURE 6: Context-dependent regulation of *slp1* transcription. (A) Schematic summarizing *slp1* regulation in four different cellular contexts as also depicted in Figure 1A. The key to the right shows symbols representing the different pair-rule transcription factors, TBP, NELF, and P-TEFb in cartoons of proposed enhancer-promoter interactions in these different contexts. (B) In type I cells, PESE interacts with the promoter to recruit TBP, Pol II, and other PIC components to the promoter, and transcription is initiated. However, Eve inhibits P-TEFb recruitment, thereby blocking Pol II release and resulting in a NELF-associated paused Pol II complex. (C) In type II cells, Runt prevents PESE from interacting with the *slp1* promoter. Instead, DESE mediates activation by Runt and Opa by increasing P-TEFb recruitment, pSer-2 modification of the Pol II CTD, and a release into productive transcription elongation that results in production of the odd-numbered *slp1* stripes. (D) DESE also interacts with the promoter in type III cells, but the combination of Runt and Ftz inhibits P-TEFb recruitment, resulting in a paused Pol II complex and *slp1* repression. (E) In type IV cells, the absence of Runt allows PESE to interact with the promoter, recruit Pol II, and promote transcription initiation. The absence of Eve allows P-TEFb recruitment, CTD Ser-2 phosphorylation, and Pol II release into productive transcription elongation, which results in production of the even-numbered stripes of *slp1* expression.

binding sites relative to the sites required for activation. Similarly, understanding the mechanistic differences in the mode of Runt-dependent repression of PESE and DESE requires determining whether Runt interacts directly with both enhancers and, if so, defining the location of the Runt sites relative to the binding sites of factors involved in their activation.

A leading candidate for a direct activator of both PESE and DESE is the Zn-finger transcription factor Opa. The loss of the DESE-dependent odd-numbered *slp1* stripes in presumptive type III cells in *opa* mutant embryos provides evidence that Opa is required for

activation of DESE. The even-numbered *slp1* stripes are also greatly reduced in *opa* mutants (Swantek and Gergen, 2004). Both DESE and PESE can drive expression in the type IV cells that express these stripes. It will be interesting to determine whether it is DESE or PESE that is responsible for the residual expression of *slp1* in presumptive type IV cells in *opa* mutant embryos. It will also be important to identify the unknown Factor X responsible for this expression. Indeed, a complete understanding of the factors involved in activating these *slp1* enhancers and the architecture of the binding sites that contribute to their activation and repression should indicate whether the differing modes of *slp1* repression can be properly categorized as involving either the short-range or long-range mechanisms and provide great insights into the context-dependent activities of the Runt transcription factor.

Context-dependent contributions of the *slp1* early stripe elements

One of the most interesting aspects of the two *slp1* early stripe elements is their combined ability to faithfully integrate regulatory inputs from the pair-rule transcription factors in a nonadditive manner not predicted by the autonomous properties of each enhancer. The results presented here provide information on the potential contributions of these two enhancers to *slp1* regulation in each of the four different cellular contexts comprising the segmented region of the blastoderm embryo. On the basis of the finding that Runt prevents PESE-dependent recruitment of Pol II, we propose that only the DESE enhancer is capable of driving *slp1* transcription in Runt-expressing cells. DESE is capable of activating transcription in the type II cells that do not express Ftz, resulting in expression of the odd-numbered *slp1* stripes (Figure 6C). In contrast, the presence of both Ftz and Runt in type III cells results in the DESE-dependent antagonism of P-TEFb recruitment and a failure of paused Pol II release from the *slp1* promoter (Figure 6D). Indeed, the finding that the *slp1* expression observed in presumptive type III cells in *ftz* mutants is insensitive to repression by Eve (Figure 4H) supports the proposal that DESE and not PESE is primarily responsible for regulating expression of the endogenous *slp1* gene in these Runt-expressing cells. Finally, the results of ChIP experiments demonstrating that the block to promoter-proximal paused Pol II release observed for *slp1* in all somatic blastoderm nuclei in response to NGT-driven Runt and Ftz is emulated by a *DESE-lacZ* (Figure 2) but not by a *PESE-lacZ* (Figure 4) reporter provide strong evidence that *slp1* repression by Runt and Ftz in type III cells is mediated by DESE.

It is perhaps more interesting to consider the relative contributions of PESE and DESE to *slp1* regulation in the type I and type IV

cells that do not express Runt. We consider first cell type I, in which Eve is responsible for *slp1* repression (Swanek and Gergen, 2004). This repression should be mediated by PESE because DESE is insensitive to repression by Eve (Prazak et al., 2010). Indeed, key to explaining the nonadditive interaction between PESE and DESE is to understand how the presence of PESE prevents DESE-dependent expression of *slp1* in these type I cells. We propose that Eve-dependent repression of PESE involves interactions between PESE and the *slp1* promoter that not only prevent release of promoter-proximal paused Pol II but also interfere with the ability of the DESE enhancer to drive transcription from the *slp1* promoter (Figure 6B). Prevention of promoter access by steric hindrance is a straightforward explanation for this proposed dominant interfering effect of PESE on DESE-dependent transcription.

It is interesting to further consider which enhancer is responsible for the even-numbered *slp1* stripes in cell type IV (Figure 6E). When tested as autonomous elements, both DESE and PESE drive expression in these cells (Prazak et al., 2010). Ectopic Eve specifically represses the even-numbered stripes of *slp1* (Swanek and Gergen, 2004) and of a composite reporter containing both the DESE and PESE enhancers but has no effect on the activity of DESE when it is tested as an autonomous enhancer (Prazak et al., 2010). Thus Eve and PESE can also cooperate to dominantly interfere with the activity of DESE in these presumptive type IV cells. Eve-dependent repression of PESE in these cells should result in a promoter-proximal paused Pol II complex that prevents DESE-dependent expression, just as proposed for cell type I. Although it is possible that DESE normally contributes to *slp1* expression in type IV cells, this should occur under dynamic conditions under which both enhancers share access to the promoter, thereby allowing PESE to establish repression in response to the ectopic expression of Eve.

The mechanism we proposed to account for the nonadditive interactions between these two *slp1* enhancers may also explain other nonadditive interactions, such as the ability of a distal “shadow enhancer” to block the action of a proximal enhancer on the *snail* promoter (Dunipace et al., 2011). Individual enhancers frequently drive expression in cells that do not express the endogenous gene (Pfeiffer et al., 2008), and in silico attempts to model integration of cis-regulatory information at a promoter strongly suggest that there are nonautonomous mechanisms for silencing unwanted activation (Kim et al., 2013; Samee and Sinha, 2014). Dominant repression by an enhancer-dependent block to release of a promoter-proximal paused Pol II complex provides a potentially widespread route for silencing such spurious transcription. Regulation of transcription elongation was initially believed to facilitate rapid changes in gene expression (Lis, 1998), although more recent work indicates other roles in contributing to the fidelity and/or synchronicity of promoter activity (Boettiger and Levine, 2009; Lagha et al., 2013). Control of promoter-proximal pausing is clearly critical for integrating regulatory inputs from Runt and other pair-rule transcription factors during *Drosophila* segmentation. The interplay between this mode of regulation and other, more direct modes of regulating enhancer-promoter interactions is extremely likely to be of broad importance for the regulation of gene expression in developmental systems.

MATERIALS AND METHODS

Transgenic lacZ reporters and *Drosophila* strains

The *slp1*[3918]lacZ^{att} and *slp1*[PESE:C1+]lacZ^{att} reporter lines generated by ΦC31-mediated transgenesis and integrated into the *P*{CaryP}attP2 docking site used for other reporter genes in this study were described previously (Prazak et al., 2010). These constructs contain *slp1* basal promoter sequences spanning from

–72 to +57 base pairs. Although this promoter region supports DESE-driven expression, more robust activity is observed with a promoter segment that extends from 260 base pairs upstream to 121 base pairs downstream of the TSS. Thus reporter constructs used to assess the effects of DESE and PESE on association of different factors with the promoter contained this larger *slp1*:p381 segment. This extended promoter, obtained by PCR amplification with flanking XhoI and KpnI sites, was used to replace the shorter promoter segment contained in pC:*slp1*-link-lacZ^{att}. The DESE-containing *slp1*[8765/p381]lacZ reporter contains DNA extending from 8710 to 6506 base pairs upstream of the *slp1* TSS inserted as a NotI–StuI fragment upstream of the p381 segment. The PESE-containing *slp1*[3125/p381]lacZ reporter contains DNA extending from 3140 to 2519 base pairs upstream of the TSS inserted as an Spel fragment. Transformants containing the *slp1*[8765/p381]lacZ transgene were generated as described (Prazak et al., 2010). Transformants containing the *slp1*[p381]lacZ and *slp1*[3125/p381]lacZ transgenes were generated by BestGene. Homozygous stocks were generated through crosses with third chromosome balancers.

Drosophila stocks

The second chromosome-linked *P*{GAL4-nos.NGT}40 (*NGT*[40]) and third chromosome-linked *P*{GAL4-nos.NGT}A (*NGT*[A]) maternal GAL4-driver lines, as well as the compound stock homozygous for both transgenes, have been described (Tracey et al., 2000; Wheeler et al., 2002). Standard crossing schemes were used to generate stocks homozygous for the second chromosome *NGT*[40] maternal GAL4-driver and different lacZ reporters inserted into the third chromosome *P*{CaryP}attP2 docking site. Similarly, a recombinant third chromosome containing both the *NGT*[A] GAL4-driver and *slp1*[8765]p381-lacZ reporter was used to create a compound stock homozygous for both these transgenes and also homozygous for *NGT*[40]. The temperature-sensitive *eve*[1] mutation and the *ftz*[11] mutation were obtained from the Bloomington *Drosophila* Stock Center. The second chromosome-linked *UAS-eve*[12] and *UAS-runt*[232] transgenes and third chromosome-linked *UAS-ftz*[263] and *UAS-opa*[10] transgenes, as well as the compound *UAS-runt*[232]; *UAS-ftz*[263] stock, have been described (Prazak et al., 2010). A transgene that allows for GAL4-driven expression of *Hairy* was obtained from D. Ish-Horowicz (Imperial Cancer Research Fund, London, United Kingdom) and used to generate a recombinant *UAS-runt*[232] *UAS-hairy*[211] second chromosome, which was then combined in a compound stock with the third chromosome-linked *UAS-opa*[10]. Flies from either the *y w*[67c23] or *y w*[67c23]; *P*{CaryP}attP2 strain were used for crosses described as being done with wild-type males.

In situ hybridization

Immunohistochemical and fluorescence in situ hybridization was done as described (Prazak et al., 2010). Antisense RNA probes were produced using T7 or T3 RNA polymerase and digoxigenin-UTP (Roche) or fluorescein isothiocyanate (FITC)-UTP (Roche). Antibodies for fluorescent in situ mouse anti-DIG, rabbit anti-FITC, goat anti-mouse Alexa Fluor 555, donkey anti-rabbit Alexa Fluor 647, and donkey anti-goat Alexa Fluor 555 were obtained from Molecular Probes. Confocal images were acquired on a Leica TCS SP5 Microscope system.

ChIP assays

ChIP assays were performed as described (Wang et al., 2007) using chromatin prepared from 25 mg of pooled collections of 3- to 4-h embryos (~2500 embryos) with the following antisera:

mouse monoclonal antibodies 8WG16 (recognizes Pol II CTD lacking pSer-2; Millipore) and H14 (recognizes pSer-5–modified CTD; Millipore; Jones *et al.*, 2004), rabbit ab5095 (recognizes pSer-2–modified CTD; Abcam); rabbit anti-dTBP, anti-dTFIIB, and anti-dTFIIF30 (RAP30; Lebedeva *et al.*, 2005), rabbit anti-dSpt5 and anti-NELF-E (Wu *et al.*, 2003), and rabbit anti-CycT (Hanyu-Nakamura *et al.*, 2008). Quantitative PCR (qPCR) was used to measure enrichment of different DNA segments in the immunoprecipitates. This enrichment is reported as a percentage of input DNA, with error bars representing the mean \pm SD from three independent immunoprecipitation experiments. Background precipitation was determined using rabbit serum (Sigma-Aldrich). ChIP signals on the *hsp70a* promoter were used to normalize results obtained from replicates of the same experiment or with chromatin preparations from different genotypes for each antibody and chromatin preparation as described previously (Wang *et al.*, 2007). Primer sequences used for qPCR are available upon request.

ACKNOWLEDGMENTS

Technical assistance from Liujing Xing, Chih-Li Lin, and Shabbir Alam and advice from Xiaoling Wang, Lisa Prazak, Kimberly Bell, and Mike Higgins contributed to this work. The manuscript benefitted from comments of Deniz Erezyilmaz, Ben Martin, and Xiaoling Wang. We thank David Gilmour, David Ish-Horowicz, James Kadonaga, Akira Nakamura, and John Reintz for providing antibodies and *Drosophila* stocks. This work was supported by Award MCB 0721430 from the National Science Foundation and Award R01GM094401 from the National Institute of General Medical Sciences.

REFERENCES

- Andrulis ED, Guzman E, Doring P, Werner J, Lis JT (2000). High-resolution localization of *Drosophila* Spt5 and Spt6 at heat shock genes in vivo: roles in promoter proximal pausing and transcription elongation. *Genes Dev* 14, 2635–2649.
- Aronson BD, Fisher AL, Blechman K, Caudy M, Gergen JP (1997). Groucho-dependent and -independent repression activities of Runt domain proteins. *Mol Cell Biol* 17, 5581–5587.
- Bieniasz PD, Grdina TA, Bogerd HP, Cullen BR (1999). Recruitment of cyclin T1/P-TEFb to an HIV type 1 long terminal repeat promoter proximal RNA target is both necessary and sufficient for full activation of transcription. *Proc Natl Acad Sci USA* 96, 7791–7796.
- Boettiger AN, Levine M (2009). Synchronous and stochastic patterns of gene activation in the *Drosophila* embryo. *Science* 325, 471–473.
- Chao SH, Price DH (2001). Flavopiridol inactivates P-TEFb and blocks most RNA polymerase II transcription in vivo. *J Biol Chem* 276, 31793–31799.
- Cheung E, Acevedo ML, Cole PA, Kraus WL (2005). Altered pharmacology and distinct coactivator usage for estrogen receptor-dependent transcription through activating protein-1. *Proc Natl Acad Sci USA* 102, 559–564.
- Chiba K, Yamamoto J, Yamaguchi Y, Handa H (2010). Promoter-proximal pausing and its release: molecular mechanisms and physiological functions. *Exp Cell Res* 316, 2723–2730.
- Core LJ, Lis JT (2008). Transcription regulation through promoter-proximal pausing of RNA polymerase II. *Science* 319, 1791–1792.
- Dubnicoff T, Valentine SA, Chen G, Shi T, Lengyel JA, Paroush Z, Courey AJ (1997). Conversion of dorsal from an activator to a repressor by the global corepressor Groucho. *Genes Dev* 11, 2952–2957.
- Dunipace L, Ozdemir A, Stathopoulos A (2011). Complex interactions between cis-regulatory modules in native conformation are critical for *Drosophila* snail expression. *Development* 138, 4075–4084.
- Fujioka M, Jaynes JB (2012). Regulation of a duplicated locus: *Drosophila* sloppy paired is replete with functionally overlapping enhancers. *Dev Biol* 362, 309–319.
- Gilmour DS (2009). Promoter proximal pausing on genes in metazoans. *Chromosoma* 118, 1–10.
- Guenther MG, Levine SS, Boyer LA, Jaenisch R, Young RA (2007). A chromatin landmark and transcription initiation at most promoters in human cells. *Cell* 130, 77–88.
- Han K, Manley JL (1993). Transcriptional repression by the *Drosophila* even-skipped protein: definition of a minimal repression domain. *Genes Dev* 7, 491–503.
- Hanyu-Nakamura K, Sonobe-Nojima H, Tanigawa A, Lasko P, Nakamura A (2008). *Drosophila* Pgc protein inhibits P-TEFb recruitment to chromatin in primordial germ cells. *Nature* 451, 730–733.
- Hewitt GF, Strunk BS, Margulies C, Priputin T, Wang XD, Amey R, Pabst BA, Kosman D, Reintz J, Arnosti DN (1999). Transcriptional repression by the *Drosophila* giant protein: cis element positioning provides an alternative means of interpreting an effector gradient. *Development* 126, 1201–1210.
- Hirose Y, Ohkuma Y (2007). Phosphorylation of the C-terminal domain of RNA polymerase II plays central roles in the integrated events of eucaryotic gene expression. *J Biochem* 141, 601–608.
- Howard K, Ingham P (1986). Regulatory interactions between the segmentation genes fushi tarazu, hairy, and engrailed in the *Drosophila* blastoderm. *Cell* 44, 949–957.
- Ish-Horowitz D, Pinchin SM (1987). Pattern abnormalities induced by ectopic expression of the *Drosophila* gene hairy are associated with repression of ftz transcription. *Cell* 51, 405–415.
- Javed A, Guo B, Hiebert S, Choi JY, Green J, Zhao SC, Osborne MA, Stifani S, Stein JL, Lian JB, *et al.* (2000). Groucho/TLE/R-esp proteins associate with the nuclear matrix and repress RUNX (CBF(alpha))/AML/PEBP2(alpha) dependent activation of tissue-specific gene transcription. *J Cell Sci* 113, 2221–2231.
- Jiang H, Zhang F, Kurosu T, Peterlin BM (2005). Runx1 binds positive transcription elongation factor b and represses transcriptional elongation by RNA polymerase II: possible mechanism of CD4 silencing. *Mol Cell Biol* 25, 10675–10683.
- Jones JC, Phatnani HP, Haystead TA, MacDonald JA, Alam SM, Greenleaf AL (2004). C-terminal repeat domain kinase I phosphorylates Ser2 and Ser5 of RNA polymerase II C-terminal domain repeats. *J Biol Chem* 279, 24957–24964.
- Kim AR, Martinez C, Ionides J, Ramos AF, Ludwig MZ, Ogawa N, Sharp DH, Reintz J (2013). Rearrangements of 2.5 kilobases of noncoding DNA from the *Drosophila* even-skipped locus define predictive rules of genomic cis-regulatory logic. *PLoS Genet* 9, e1003243.
- Kramer SG, Jinks TM, Schedl P, Gergen JP (1999). Direct activation of Sex-lethal transcription by the *Drosophila* runt protein. *Development* 126, 191–200.
- Lagha M, Bothma JP, Esposito E, Ng S, Stefanik L, Tsui C, Johnston J, Chen K, Gilmour DS, Zeitlinger J, *et al.* (2013). Paused Pol II coordinates tissue morphogenesis in the *Drosophila* embryo. *Cell* 153, 976–987.
- Lebedeva LA, Nabirochkina EN, Kurshakova MM, Robert F, Krasnov AN, Evgen'ev MB, Kadonaga JT, Georgieva SG, Tora L (2005). Occupancy of the *Drosophila* hsp70 promoter by a subset of basal transcription factors diminishes upon transcriptional activation. *Proc Natl Acad Sci USA* 102, 18087–18092.
- Lee C, Li X, Hechmer A, Eisen M, Biggin MD, Venters BJ, Jiang C, Li J, Pugh BF, Gilmour DS (2008). NELF and GAGA factor are linked to promoter-proximal pausing at many genes in *Drosophila*. *Mol Cell Biol* 28, 3290–3300.
- Li LM, Arnosti DN (2011). Long- and short-range transcriptional repressors induce distinct chromatin states on repressed genes. *Curr Biol* 21, 406–412.
- Lis J (1998). Promoter-associated pausing in promoter architecture and postinitiation transcriptional regulation. *Cold Spring Harb Symp Quant Biol* 63, 347–356.
- Lis JT, Mason P, Peng J, Price DH, Werner J (2000). P-TEFb kinase recruitment and function at heat shock loci. *Genes Dev* 14, 792–803.
- Majello B, Napolitano G, Giordano A, Lania L (1999). Transcriptional regulation by targeted recruitment of cyclin-dependent CDK9 kinase in vivo. *Oncogene* 18, 4598–4605.
- Manoukian AS, Krause HM (1993). Control of segmental asymmetry in *Drosophila* embryos. *Development* 118, 785–796.
- McKay LM, Carpenter B, Roberts SG (1999). Evolutionary conserved mechanism of transcriptional repression by even-skipped. *Nucleic Acids Res* 27, 3064–3070.
- Muse GW, Gilchrist DA, Nechaev S, Shah R, Parker JS, Grissom SF, Zeitlinger J, Adelman K (2007). RNA polymerase is poised for activation across the genome. *Nat Genet* 39, 1507–1511.

- Negre N, Brown CD, Ma L, Bristow CA, Miller SW, Wagner U, Kheradpour P, Eaton ML, Loriaux P, Sealfon R, et al. (2011). A cis-regulatory map of the *Drosophila* genome. *Nature* 471, 527–531.
- Peng Y, Jahroudi N (2002). The NFY transcription factor functions as a repressor and activator of the von Willebrand factor promoter. *Blood* 99, 2408–2417.
- Pfeiffer BD, Jenett A, Hammonds AS, Ngo TT, Misra S, Murphy C, Scully A, Carlson JW, Wan KH, Lavery TR, et al. (2008). Tools for neuroanatomy and neurogenetics in *Drosophila*. *Proc Natl Acad Sci USA* 105, 9715–9720.
- Porter W, Saville B, Hoivik D, Safe S (1997). Functional synergy between the transcription factor Sp1 and the estrogen receptor. *Mol Endocrinol* 11, 1569–1580.
- Prazak L, Fujioka M, Gergen JP (2010). Non-additive interactions involving two distinct elements mediate sloppy-paired regulation by pair-rule transcription factors. *Dev Biol* 344, 1048–1059.
- Price DH (2008). Poised polymerases: on your mark...get set...go! *Mol Cell* 30, 7–10.
- Roy S, Ernst J, Kharchenko PV, Kheradpour P, Negre N, Eaton ML, Landolin JM, Bristow CA, Ma L, Lin MF, et al. (2010). Identification of functional elements and regulatory circuits by *Drosophila* modENCODE. *Science* 330, 1787–1797.
- Sakabe NJ, Aneas I, Shen T, Shokri L, Park SY, Bulyk ML, Evans SM, Nobrega MA (2012). Dual transcriptional activator and repressor roles of TBX20 regulate adult cardiac structure and function. *Hum Mol Genet* 21, 2194–2204.
- Samee MA, Sinha S (2014). Quantitative modeling of a gene's expression from its intergenic sequence. *PLoS Comput Biol* 10, e1003467.
- Saunders A, Core LJ, Lis JT (2006). Breaking barriers to transcription elongation. *Nat Rev Mol Cell Biol* 7, 557–567.
- Seufert DW, Prescott NL, El-Hodiri HM (2005). *Xenopus* aristaless-related homeobox (xARX) gene product functions as both a transcriptional activator and repressor in forebrain development. *Dev Dyn* 232, 313–324.
- Strunk B, Struffi P, Wright K, Pabst B, Thomas J, Qin L, Arnosti DN (2001). Role of CtBP in transcriptional repression by the *Drosophila* giant protein. *Dev Biol* 239, 229–240.
- Swantek D, Gergen JP (2004). Ftz modulates Runt-dependent activation and repression of segment-polarity gene transcription. *Development* 131, 2281–2290.
- Tracey WD Jr, Ning X, Klingler M, Kramer SG, Gergen JP (2000). Quantitative analysis of gene function in the *Drosophila* embryo. *Genetics* 154, 273–284.
- Tsai C, Gergen P (1995). Pair-rule expression of the *Drosophila* fushi tarazu gene: a nuclear receptor response element mediates the opposing regulatory effects of runt and hairy. *Development* 121, 453–462.
- Umayahara Y, Kawamori R, Watada H, Imano E, Iwama N, Morishima T, Yamasaki Y, Kajimoto Y, Kamada T (1994). Estrogen regulation of the insulin-like growth factor I gene transcription involves an AP-1 enhancer. *J Biol Chem* 269, 16433–16442.
- Walrad PB, Hang S, Joseph GS, Salas J, Gergen JP (2010). Distinct contributions of conserved modules to Runt transcription factor activity. *Mol Biol Cell* 21, 2315–2326.
- Wang X, Lee C, Gilmour DS, Gergen JP (2007). Transcription elongation controls cell fate specification in the *Drosophila* embryo. *Genes Dev* 21, 1031–1036.
- Wheeler JC, VanderZwan C, Xu X, Swantek D, Tracey WD, Gergen JP (2002). Distinct in vivo requirements for establishment versus maintenance of transcriptional repression. *Nat Genet* 32, 206–210.
- Wu CH, Yamaguchi Y, Benjamin LR, Horvat-Gordon M, Washinsky J, Enerly E, Larsson J, Lambertsson A, Handa H, Gilmour D (2003). NELF and DSIF cause promoter proximal pausing on the hsp70 promoter in *Drosophila*. *Genes Dev* 17, 1402–1414.
- Zeitlinger J, Stark A, Kellis M, Hong JW, Nechaev S, Adelman K, Levine M, Young RA (2007). RNA polymerase stalling at developmental control genes in the *Drosophila melanogaster* embryo. *Nat Genet* 39, 1512–1516.