

ARTICLE OPEN



Molecular Diagnostics

Integrative tumour mutation burden with CD39 and PD-L1 for the prediction of response to PD-L1 blockade and adjuvant chemotherapy in muscle-invasive bladder cancer patients

Chunnan Liu^{1,8}, Zhaopei Liu^{1,8}, Kaifeng Jin^{2,8}, Han Zeng^{3,8}, Fei Shao⁴, Yuan Chang¹, Yiwei Wang⁵, Le Xu⁶, Zewei Wang³, Yu Zhu¹ and Weijuan Zhang⁷

© The Author(s) 2022

BACKGROUND: CD39, a rate-limiting enzyme to convert extracellular ATP (eATP) to adenosine, has been reported to be a key modulator of immune response, but its correlation with therapeutic sensitivity remains obscure. We conducted this study to determine whether the integration of CD39 and traditional biomarkers could improve the prediction of responsiveness to PD-L1 blockade and platinum-based chemotherapy.

METHODS: We retrospectively enrolled a total of 760 patients from IMvigor210 trial, TCGA database and Zhongshan Hospital in this study. We constructed the CPT scoring system based on CD39, PD-L1 and tumour mutation burden (TMB) and validated its efficacy in predicting therapeutic responsiveness in MIBC patients. Kaplan–Meier survival and Cox regression analyses were applied to assess clinical outcomes of patients.

RESULTS: The CPT scoring system could predict the response to PD-L1 blockade and platinum-based chemotherapy. The CPT score was positively correlated with APOBEC mutational signature and SNV neoantigens enrichment, antigen presentation, and TCR signalling. High CPT score also indicated the inflamed immune phenotype and basal/squamous molecular subtype.

CONCLUSIONS: CD39 expression is closely correlated with the immunogenic contexture of MIBC. Integrating CD39 with PD-L1 and TMB could stratify the sensitivity of patients with MIBC to PD-L1 blockade and platinum-based chemotherapy.

British Journal of Cancer (2022) 127:1718–1725; <https://doi.org/10.1038/s41416-022-01943-y>

INTRODUCTION

Muscle-invasive bladder cancer (MIBC) is one of the most lethal urinary malignancies, with a 5-year survival rate of <15% in patients who do not receive treatment [1]. Cisplatin-based adjuvant chemotherapy (ACT) has been the main strategy of systematic management of MIBC over the past decades [2]. Immune checkpoint inhibitors (ICIs) have revolutionised the therapeutic landscape with advanced development [3]. However, only a minority of patients could benefit from these treatments [4]. Thus, there is an urgent need to identify patients who will present a satisfying therapeutic response and to further achieve better clinical outcomes.

PD-L1 has been demonstrated to be an important biomarker for patient selection for ICIs, of which modest sensitivity is attracting increasing attention [5]. In addition, tumour mutation burden (TMB) has also been reported to be a useful biomarker for ICIs across cancer types such as melanoma and non-small cell lung

cancer since it was observed that somatic mutations were key drivers in the generation of tumour-specific neoantigens [6]. However, clinical trials such as IMvigor210 and JAVELIN Bladder 100 trials indicated that single PD-L1 or single TMB could not ideally predict the responsiveness and they still missed large subgroups of patients who could potentially benefit from the therapy [7, 8]. Additionally, there has been a paucity of research regarding the combination of both biomarkers.

CD39, also called ectonucleoside triphosphate diphosphohydrolase 1, is one of the rate-limiting enzymes to convert extracellular ATP (eATP) to adenosine [9]. Within the tumour microenvironment (TME), the enrichment of eATP released from stressed or dying tumour cells could stimulate cell inflammation activity, including NLRP3 inflammasome activation, thus triggering the activation of T cells [10]. With a negative feedback mechanism, CD39 was upregulated under the stimulation of T cell receptor (TCR) to suppress activated immune response [11]. Thus, CD39 is a

¹Department of Urology, Fudan University Shanghai Cancer Center, Shanghai, China. ²Department of Biochemistry and Molecular Biology, School of Basic Medical Sciences, Fudan University, Shanghai, China. ³Department of Urology, Zhongshan Hospital, Fudan University, Shanghai, China. ⁴Department of Oncology, Shanghai General Hospital, Shanghai Jiao Tong University School of Medicine, Shanghai, China. ⁵Department of Urology, Shanghai Ninth People's Hospital, Shanghai Jiao Tong University School of Medicine, Shanghai, China. ⁶Department of Urology, Ruijin Hospital, Shanghai Jiao Tong University School of Medicine, Shanghai, China. ⁷Department of Immunology, School of Basic Medical Sciences, Fudan University, Shanghai, China. ⁸These authors contributed equally: Chunnan Liu, Zhaopei Liu, Kaifeng Jin, Han Zeng.

✉email: zwwang12@fudan.edu.cn; yuzhu10@fudan.edu.cn; weijuanzhang@fudan.edu.cn

Received: 2 May 2022 Revised: 23 July 2022 Accepted: 29 July 2022

Published online: 23 August 2022

biomarker of tumour-reactive T cells and a potential indicator for an inflamed TME, which makes it a possible therapeutic biomarker in MIBC [12, 13]. Extensive research has shown that biomarkers characterising an inflamed TME could function as complementary predictors of therapeutic response independent of PD-L1 and TMB [14, 15].

Therefore, we cautiously hypothesised that the responsiveness of the systemic treatment in MIBC patients could be better predicted with the combination of CD39, PD-L1 and TMB. In the current study, we proposed a “CPT score”, which was derived by incorporating CD39 expression, PD-L1 expression and TMB level to evaluate the responsiveness of MIBC patients. It is hoped that our results could provide new insights into the field of immunotherapy and references for clinicians to make patient-tailored treatment decisions.

MATERIALS AND METHODS

Study population

This study included three independent cohorts. The first cohort enrolled 348 patients from the IMvigor210 trial, a large single-arm phase II study investigating atezolizumab in metastatic urothelial carcinoma (mUC) [7]. All data from the IMvigor210 trial was downloaded from <http://research-pub.gene.com/IMvigor210CoreBiologies> through the R package *IMvigor210CoreBiologies*. A total of 114 patients were excluded: 50 patients without overall response data and 64 patients without evaluation of TMB level. These patients all had histologically or cytologically documented locally advanced or metastatic urothelial carcinoma (including metastasis from renal pelvis, ureter, urinary bladder, or urethra).

The second cohort contained 412 patients from the *Cancer Genome Atlas* (TCGA) database. Characteristics of the patients and mRNA sequencing data were downloaded from <http://www.cbioportal.org/> in July 2021. Twenty-one patients were excluded: 4 patients with non-muscle invasive bladder cancer (NMIBC), 7 patients without survival or sequencing data and 10 patients receiving neoadjuvant chemotherapy. Finally, 391 eligible MIBC patients were included for further survival and bioinformatics analysis. Among them, 335 patients were classified as pure urothelial histology. Fifty-one patients had urothelial carcinoma with variant histology, including 41 squamous, 4 small cell/neuroendocrine, 2 micropapillary, and 4 plasmacytoid. 5 additional tumours were included: 3 pure squamous cell bladder carcinomas, 1 squamous cell carcinoma of non-bladder origin, and 1 bladder adenocarcinoma.

The Zhongshan Hospital (ZSHS) cohort of Fudan University recruited 215 bladder cancer patients treated with radical cystectomy (RC) from 2002 to 2014. Patients with neoadjuvant chemotherapy history were excluded from this cohort. A total of 80 patients were eliminated according to the following exclusion criteria: 60 patients with NMIBC, 13 patients with nonurothelial carcinoma and 7 patients whose specimens detached from the tissue microarray during the process of immunohistochemistry staining. Eventually, the ZSHS cohort was comprised of 135 MIBC patients for further analysis. The pathological type of all these patients was pure urothelial carcinoma. Among them, 65 patients received adjuvant cisplatin-based chemotherapy for at least one therapeutic cycle. The follow-up protocol was instructed by EAU guidelines for MIBC. Overall survival (OS) was calculated as the time from the date of RC to the date of death from all causes, or to the last follow-up. This study was approved by the Clinical Research Ethics Committee of Zhongshan Hospital.

The flow chart of IMvigor210, TCGA and ZSHS cohorts was presented in Supplementary Fig. 1. Baseline characteristics of the three cohorts were summarised respectively in Supplementary Tables 1–3.

Genomic analysis and variant assessment

TMB was identified as the number of exonic, nonsynonymous single-nucleotide variants (SNV), and indel mutations per megabase of genome examined (mut/Mb) in IMvigor210 and TCGA cohorts. TMB in the TCGA cohort was calculated using results from whole-exome sequencing (WES), which was performed on the Illumina HiSeq platform. TMB in the IMvigor210 trial was obtained by targeted large-panel sequencing named FoundationOne® panel (FMOne). In this study, TMB ≥ 10 mut/Mb was defined as high TMB [6]. We estimated the contributions of mutational signatures (COSMIC v.2, https://cancer.sanger.ac.uk/cosmic/signatures_v2) for each sample in TCGA cohort via “whichSignatures” function of R

package *deconstructSigs* (<https://bioconductor.org/packages/musicat/>). The data of SNV neoantigens and Indel neoantigens of TCGA cohort was downloaded from previous studies [16].

RNA-seq data and processing

The RNA-seq data of IMvigor210 and TCGA cohorts were obtained as Fragments Per Kilobase of transcript per Million mapped reads (FPKM) and normalised through the formula $\log_2(\text{FPKM} + 1)$ before analyses. The R package *BLCAsubtyping* (<https://github.com/cit-bioinfo/BLCAsubtyping>) was used to derive the molecular subtype information of each patient. The gene sets of antigen processing and presentation and T cell receptor signalling pathway were derived from KEGG database (<https://www.kegg.jp/>). Gene members of IFN α response, IFN γ response and TGF β signalling pathway were derived from *Molecular Signatures Database* (MSigDB, <http://www.gsea-msigdb.org/>). The single sample gene set enrichment analysis (ssGSEA) algorithms were employed to quantify the gene sets involved [17]. The signatures presented in our study (cytotoxic lymphocytes signature, TLS signature, terminally exhausted signature, progenitor exhausted signature, T cell-inflamed GEP) were defined from previous studies and scored as the average expression of related genes [18–21]. The TCR and BCR diversity scores (Shannon Entropy and Richness) of TCGA cohort were downloaded from previous studies [16].

Immunohistochemistry

Immunohistochemistry (IHC) staining was performed on formalin-fixed, paraffin-embedded tissue microarray (TMA) of ZSHS cohort as described previously [22]. In summary, four groups of double staining were performed: CD68 and HLA-DR to detect M1 macrophages, CD11c and HLA-DR to detect DCs, CD4 and T-bet to detect Th1 cells, CD4 and GATA3 to detect Th2 cells. For the rest of immune cells and immune markers including CD4⁺ T cells (CD4), CD8⁺ T cells (CD8), macrophages (CD68), M2 macrophages (MRC1), Tregs (FOXP3), B cells (CD19), NK cells (CD56), mast cells (mast cell tryptase), neutrophils (CD66b) Th17 cells (IL17A) and PD-L1, we performed single IHC staining. This information was included in Supplementary Table 4. Tissue microarray analyses (TMAs) are from the ZSHS cohort. The existence of intratumoural tertiary lymphoid structures (TLSs) was assessed via both H&E and CD3/CD20 double staining using a previously published scale [23]. Tumours with at least 1 intratumoural TLS were defined as TLS positive (TLS⁺).

In our study, two pathologists (Dr. Lingli Chen and Dr. Yunyi Kong) from different medical institutes who were blinded to the clinicopathological data scored all samples separately. The mean count of their evaluation was adopted. Variations in the enumeration, exceeding 0.15 IHC score or 5 cells, were re-evaluated separately by both pathologists to reach a consensus.

Construction of the CPT score

In IMvigor210 Trial, PD-L1 expression on tumour-infiltrating immune cells (IC) is a proven biomarker of immunotherapy sensitivity. PD-L1 IC was evaluated by PD-L1 antibody SP142 using the VENTANA platform. Scoring criteria designated tumours as IC0, IC1, or IC2/3 (PD-L1 expression on <1%; $\geq 1\%$ and <5%; or $\geq 5\%$ of IC, respectively). Since the data of PD-L1 expression on tumour-infiltrating immune cells (IC) was not available in TCGA database, we defined the top 40% as high PD-L1 mRNA expression with reference to IMvigor210 cohort (IC2+ accounts for 38.5%) [7]. The cut-off point of PD-L1 in TCGA cohort was 0.7605 FPKM. Consistently, the top 40% was defined as high CD39 expression in the three cohorts involved. The cut-off points of CD39 in IMvigor210 and TCGA cohorts were 7.077 and 3.010 (FPKM), and the cut-off point of CD39⁺ cells in ZSHS cohort was 16 cells/HPF. The CPT score was calculated by integrating three factors (CD39 expression, PD-L1 expression and TMB), which stratified patients into four groups. Score one point for each criterion, including high CD39 expression, PD-L1 expression on $\geq 5\%$ of tumour-infiltrating immune cells (IC2+) or high PD-L1 expression and TMB ≥ 10 mut/Mb.

Statistical analyses

The overall survival (OS) was determined by Kaplan–Meier method, which was evaluated by log-rank tests. Univariate and Multivariate Cox regression models were applied to estimate hazard ratios (HRs) and 95% confidence intervals (CIs). Patients’ baseline characteristics and disease factors were presented as descriptive statistics. Results were shown as median and interquartile range (IQR). Mann–Whitney *U*-test, Kruskal–Wallis test, Chi-square test, Fisher’s exact test and Spearman correlation analysis were used in this study. The statistical analyses were performed via IBM SPSS

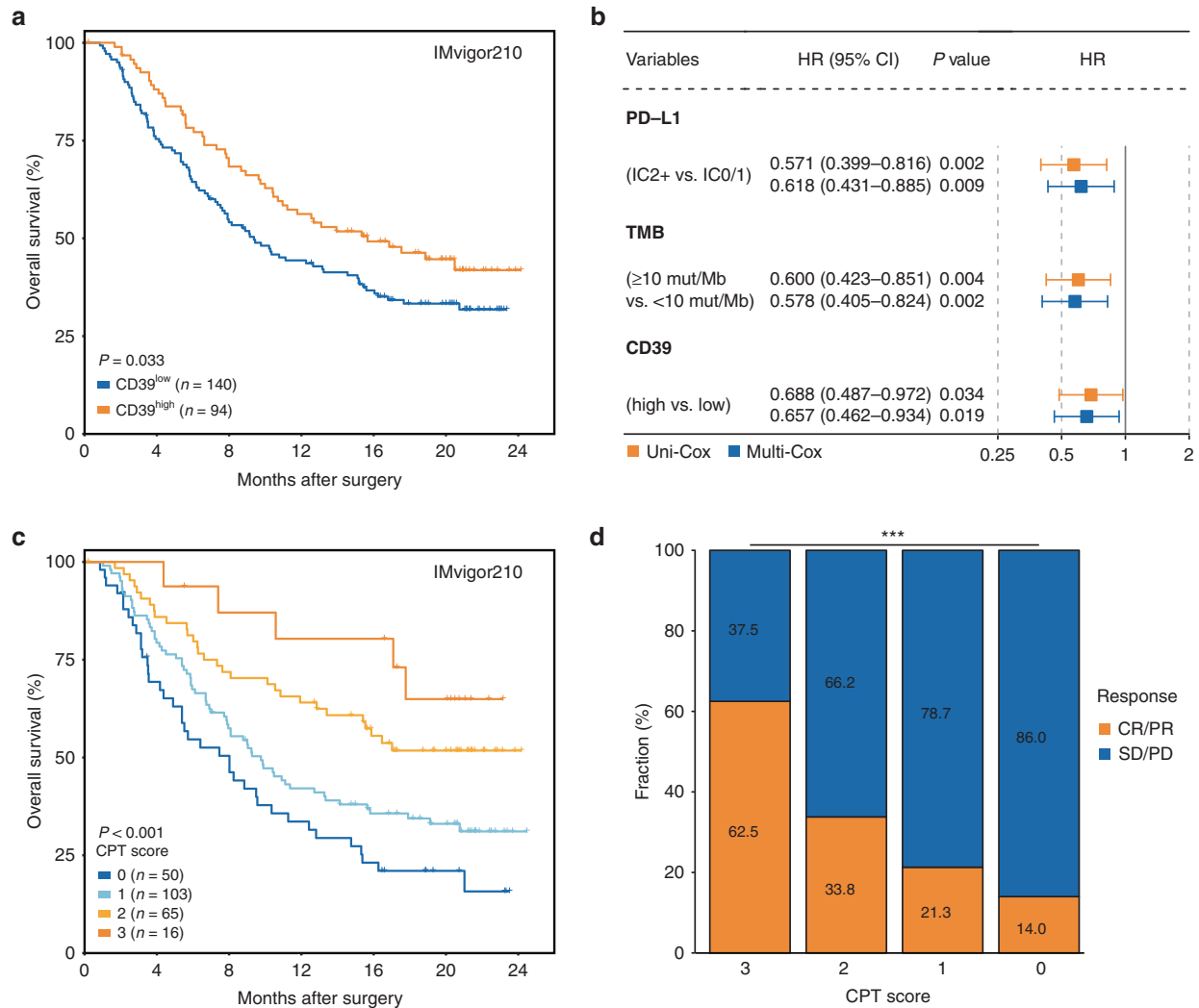


Fig. 1 The CPT score based on CD39, PD-L1 and TMB predicts therapeutic efficacy of PD-L1 blockade in MIBC. **a** Kaplan–Meier curve for OS by CD39 expression for patients treated with atezolizumab in IMvigor210 cohort. Log-rank test was performed. **b** PD-L1, TMB and CD39 expression were independent predictive factors for PD-L1 blockade. **c** Kaplan–Meier curve for OS by CPT score for patients treated with atezolizumab in IMvigor210 cohort. Log-rank test was performed. **d** Clinical response to PD-L1 blockade by CPT score in IMvigor210 cohort. Chi-square test was performed ($***P < 0.001$). OS overall survival, HR hazard ratio, CI confidence interval, PD-L1 programmed death ligand 1, IC0 PD-L1 expression on $< 1\%$ of tumour-infiltrating immune cells, IC1 PD-L1 expression on $1\text{--}5\%$ of tumour-infiltrating immune cells, IC2+ PD-L1 expression on $\geq 5\%$ of tumour-infiltrating immune cells, TMB tumour mutation burden, CR complete response, PR partial response, SD stable disease, PD progressive disease.

Statistics 25.0 and R4.0.0. Two-sided $P < 0.05$ was regarded as statistically significant.

RESULTS

The CPT score identifies patients responsive to PD-L1 blockade in MIBC

In the phase II IMvigor210 trial, atezolizumab showed clinical benefit in mUC patients with high PD-L1 expression ($\geq 5\%$, IC2+) and high TMB [7]. However, 65.5% of IC2+ patients and 58.7% of patients with high TMB could not benefit from atezolizumab (Supplementary Fig. 2A, B). Among the key molecules of the ATP-adenosine pathway, we found that only CD39 expression was significantly correlated with the OS of patients treated with atezolizumab, evaluated with the univariate and multivariate Cox models (Supplementary Fig. 2C). Compared with CD39^{low} subgroup, CD39^{high} subgroup was linked to an inferior OS in IMvigor210 cohort (Fig. 1a, $P = 0.033$). Besides, CD39 expression, PD-L1 expression and TMB all served as independent factors

after adjustment of gender, tobacco use history, metastatic site and ECOG PS score, to predict OS of patients from IMvigor210 cohort observed with the multivariate analysis (Fig. 1b and Supplementary Table 5). We further assessed whether CD39 synergising with PD-L1 or TMB could predict response to atezolizumab. Pairwise combination of CD39, PD-L1 and TMB showed improved but unsatisfactory performance in stratification of patients (Supplementary Fig. 2D–F). We then stratified patients into 4 groups based on a “CPT score”, which was constructed by incorporating CD39, PD-L1 and TMB (CPT score = 0, 1, 2, and 3). Remarkably, patients with higher CPT scores showed superior OS after treatment with atezolizumab (Fig. 1c, $P < 0.001$). The AUCs of CPT score for 12-month and 24-month OS were 0.649 and 0.674 respectively, which showed superiority over CD39, PD-L1 or TMB alone (Supplementary Fig. 3). The fractions of patients who achieved complete response (CR) or partial response (PR) were 62.5%, 33.8%, 21.3%, and 14.0% in CPT score = 3, 2, 1, and 0 subgroups, respectively (Fig. 1d, $P < 0.001$).

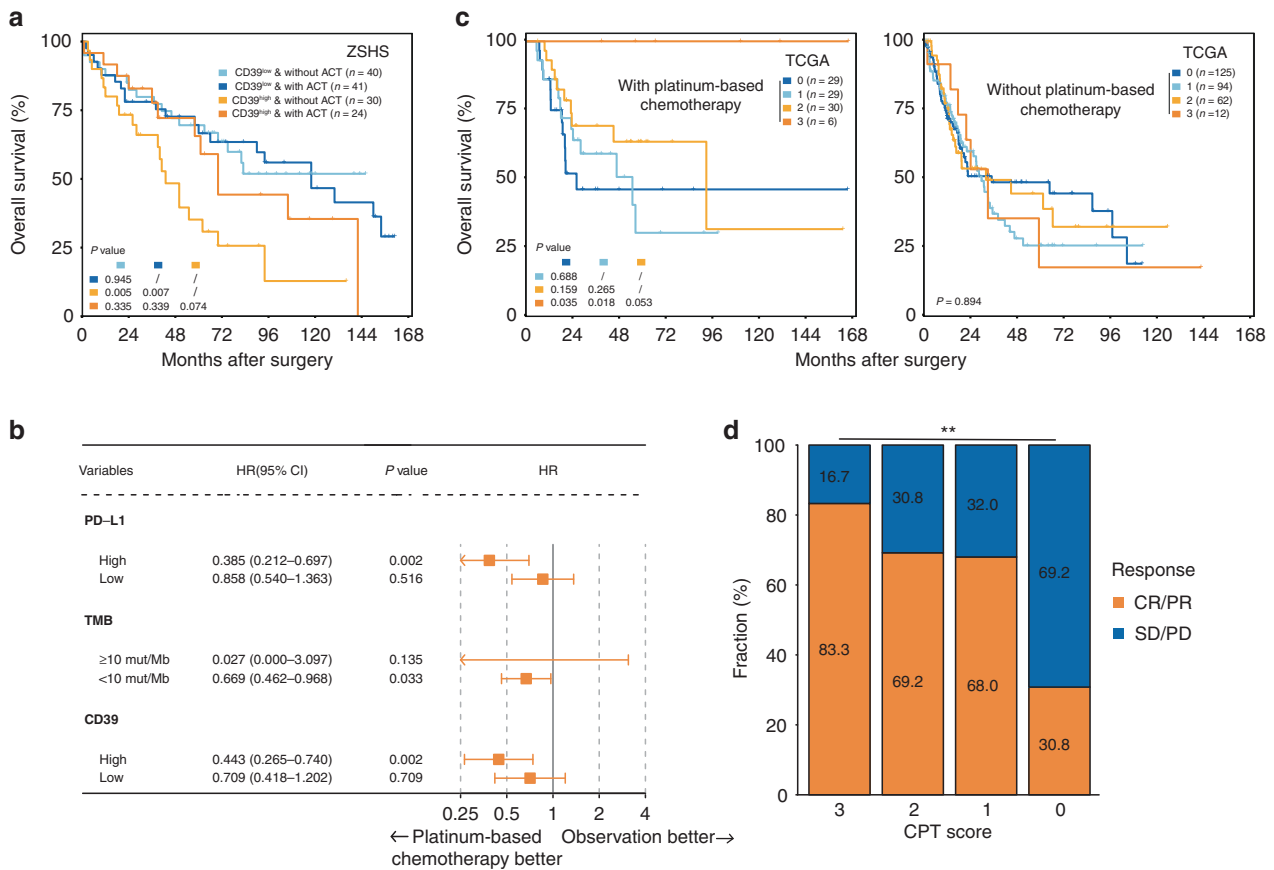


Fig. 2 The CPT score predicts chemotherapeutic response in MIBC. **a** Kaplan–Meier analysis for OS stratified by CD39⁺ cells infiltration and ACT application in ZSHS cohort. Log-rank test was performed. **b** PD-L1, TMB and CD39 expression influenced response to platinum-based chemotherapy in TCGA cohort. **c** Kaplan–Meier analysis demonstrated the overall survival probability stratified by the CPT score in patients with platinum-based chemotherapy or without platinum-based chemotherapy. Log-rank test was performed. **d** Clinical response to platinum-based chemotherapy by CPT score in TCGA cohort. Chi-square test was performed (** $P < 0.01$). ACT adjuvant chemotherapy.

The CPT score predicts chemotherapeutic response in MIBC

Cisplatin-based chemotherapy remains the standard systemic treatment for MIBC patients [4]. To explore whether the CPT score was associated with responsiveness to platinum-based chemotherapy, we compared the prognosis of patients stratified by CD39 expression, PD-L1 expression and TMB separately or in combination. Representative images of tumours with low or high CD39⁺ cells infiltration of ZSHS cohort were shown in Supplementary Fig. 4A. CD39^{high} subgroup had significantly inferior OS in ZSHS cohort (Supplementary Fig. 4B, $P = 0.007$). However, the OS of this subgroup could be improved after treatment with adjuvant chemotherapy (ACT) (Fig. 2a). The same result was found in TCGA cohort (Supplementary Fig. 5A). Intriguingly, we also observed that platinum-based chemotherapy could significantly improve the OS of patients with high PD-L1 expression or high TMB in TCGA cohort (Supplementary Fig. 5B, C and Fig. 2b). We also applied “CPT score” in TCGA cohort and found that, notably, patients with the highest CPT score showed the best OS after treatment with platinum-based chemotherapy. While in the group of patients who did not receive platinum-based chemotherapy, there was no statistically significant difference in OS among subgroups with different CPT scores (Fig. 2c). Consistently, patients with a CPT score of 3 manifested the highest response rate (83.3%) to platinum-based chemotherapy (Fig. 2d, $P < 0.01$).

The CPT score correlates with increased neoantigen burden in MIBC

Patients with high CPT scores were characterised by dominant APOBEC mutational signatures in TCGA cohort (Fig. 3a). A recent

study argued that APOBEC3B-mediated mutations resulted in more neoepitopes in tumour cell vaccines [24]. Consistently, we observed that SNV neoantigens were significantly enriched in patients with higher CPT scores (Fig. 3a). Increased number of copy number segments was observed in patients with the highest CPT score (CPT score = 3) (Supplementary Fig. 6). Furthermore, single-sample gene set enrichment analysis (ssGSEA) revealed that patients with higher CPT scores were characterised by higher level of antigen processing and presentation signature (Fig. 3b, $P < 0.001$). The effective activation of anti-tumour response also relied on the recognition of neoantigens by TCR and BCR repertoires [16]. Compared with patients with low CPT scores, patients with high CPT scores demonstrated a significant increase in TCR and BCR diversity, and downstream T cell receptor signalling pathway (Supplementary Fig. 7A, B and Fig. 3c, d).

The CPT score represents immunogenic microenvironment in MIBC

Previous studies have reported that CD39 was a marker for exhausted T cells, but CD39⁺ T cells displayed effector functions with a great quantity of activation genes expression [12, 25]. We observed that CD39 expression was positively associated with the infiltration of CD8⁺ T cells (Supplementary Fig. 8A and Fig. 4a). Intriguingly, the correlation between CD39 expression and progenitor-depleted T cells signature is stronger than that between terminally depleted T cells signature (Supplementary Fig. 8B, C). Moreover, CD39 expression was significantly linked with inflamed immune contexture (Fig. 4b). TLS⁺ patients were characterised with higher CD39⁺ cells infiltration (Fig. 4c).

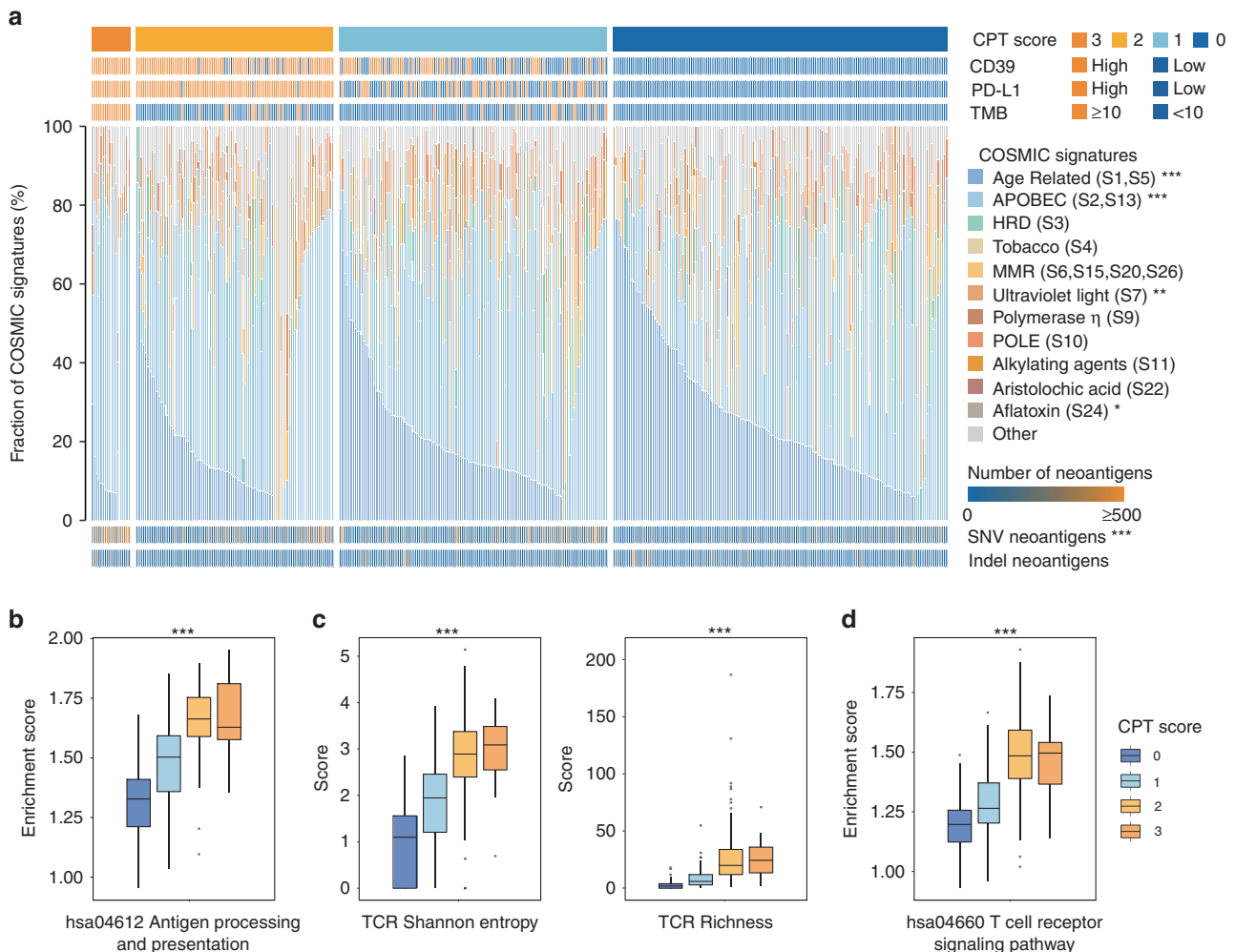


Fig. 3 The CPT score correlates with increased neoantigen burden in MIBC. **a** Patterns of mutational signatures and total number of neoantigens in patient subgroups defined by CPT score in TCGA cohort. Kruskal–Wallis test was performed (* $P < 0.05$; ** $P < 0.01$; *** $P < 0.001$). **b** The pathway scores of antigen processing and presentation were compared among patient subgroups defined by CPT score. Kruskal–Wallis test was performed (*** $P < 0.001$). **c** Higher CPT score is associated with increased T cell receptor repertoire richness and clonotype diversity. Kruskal–Wallis test was performed (*** $P < 0.001$). **d** The pathway scores of T cell receptor signalling were compared among patient subgroups defined by CPT score. Kruskal–Wallis test was performed (*** $P < 0.001$). HRD homologous recombination deficiency, MMR mismatch repair, SNV single-nucleotide variant, TCR T cell antigen receptor.

Together these results suggest that CD39^{high} subgroup exhibited inflamed TME with functional CD8⁺ T cells infiltration.

MIBC patients with high CPT score mainly demonstrated luminal-infiltrated and basal/squamous molecular subtype in IMvigor210 cohort, which were sensitive to immunotherapy [26]. By integrating CPT score and TCGA subtype, we identified that high CPT score indicated better immunotherapeutic efficacy only in patient with luminal-infiltrated and basal/squamous subtypes (Supplementary Fig. 9). High CPT score also indicated the inflamed phenotype, displaying enriched cytotoxic lymphocytes signature and TLS signature (Fig. 4d). We also found that high CPT score indicated an immune-enriched tumour microenvironment in both IMvigor210 and TCGA cohorts (Supplementary Fig. 10). Consistently, patients with high CPT score had a more favourable anti-tumour response with elevated IFN α and IFN γ response (Fig. 4d). Similar results were verified in TCGA cohort (Supplementary Fig. 11).

DISCUSSION

To optimise patient stratification and therapeutic strategies, multiple biomarkers have been identified to predict immunotherapeutic response, including markers indicative of immune

infiltration such as T cell-inflamed gene-expression profile (GEP), and those related to tumour-specific neoantigens such as TMB [8, 21, 27]. In the phase Ib KEYNOTE-028 trial, each of T cell-inflamed GEP, PD-L1 and TMB could predict the clinical efficacy of pembrolizumab individually with only moderate correlation between them [15]. As a key modulator of immune response, the role of CD39 in shaping TME and patient response to systemic therapies has not been fully understood in MIBC so far. In line with previous study, we reported CD39 as an indicator for inflamed TME in MIBC and could serve as a complementary predictor of response to ICIs together with PD-L1 and TMB. Moreover, the “CPT score” constructed based on CD39, PD-L1 and TMB was able to identify patients who were more likely to benefit from ACT.

Over the past two decades, a tremendous number of studies have revealed that efficient elimination of tumour tissues could be achieved via enhancing the immunogenicity of tumours, abrogating immune suppression, and stimulating the activation of effector cells [28]. Previous research has proved that PD-L1 and TMB are important biomarkers for ICIs [29]. However, there are tumours with a high TMB that do not respond. Conversely, there are tumours with low TMB that benefit from immunotherapy. Low spectrum of tumour purity results in low clonally homogeneous

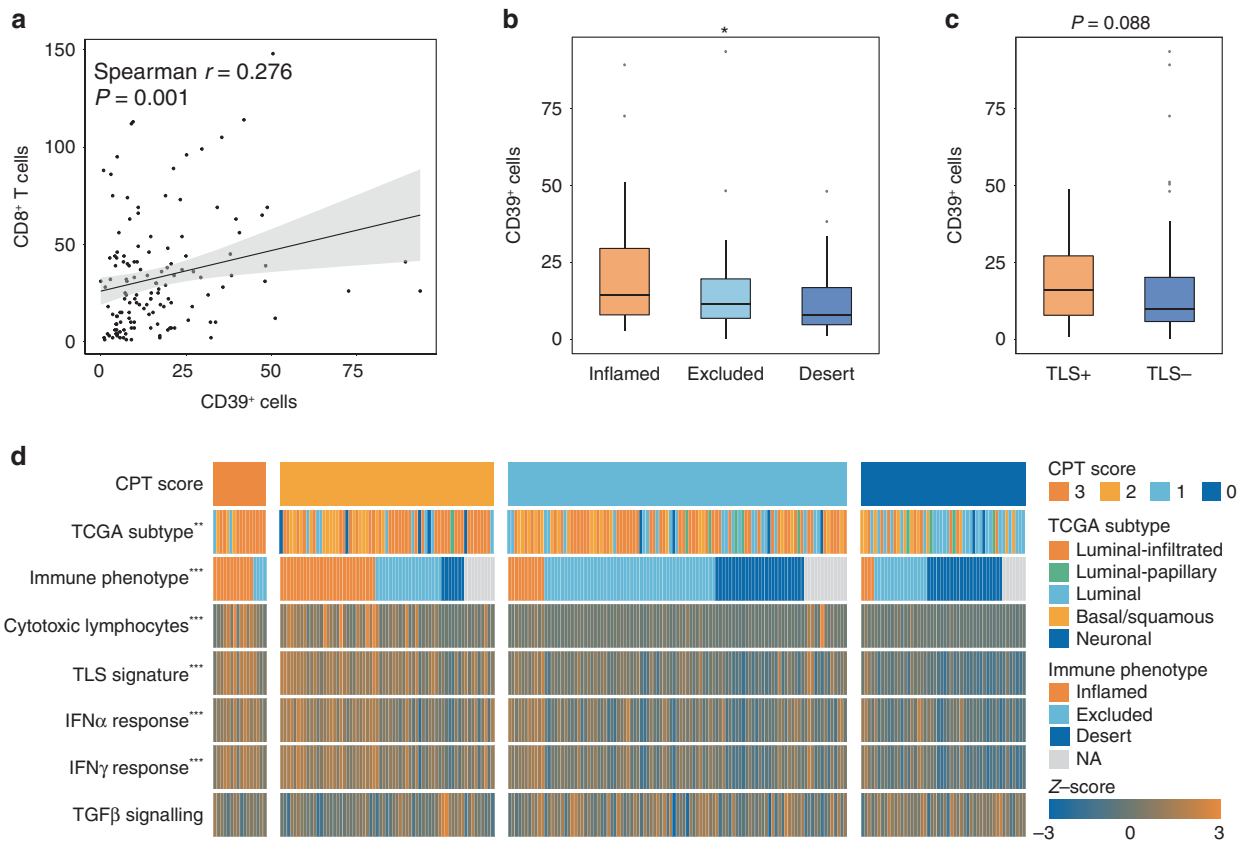


Fig. 4 The CPT score represents immunogenic microenvironment in MIBC. **a** Non-parametric two-sided Spearman correlation analysis was performed to figure out the correlations between CD39⁺ cells infiltration and CD8⁺ cells infiltration in ZSHS cohort. **b** Association between CD39⁺ cells infiltration and immunotypes in ZSHS cohort. Kruskal–Wallis test was performed ($*P < 0.05$). **c** Association between CD39⁺ cells infiltration and tertiary lymphoid structures in ZSHS cohort. Mann–Whitney U -test was performed. **d** Heatmap depicting the correlation of CPT score with immune indicators in IMvigor210 cohort. Chi-square test was performed for TCGA subtype and immune phenotype ($**P < 0.01$; $***P < 0.001$). Kruskal–Wallis test was performed for signatures and pathway scores ($***P < 0.001$). TLS tertiary lymphoid structure.

TMB, which may not match the actual tumour mutational profile. On the other hand, antigen presentation machinery affected by different mutational signatures may modulate antitumour immune response of different strengths. Platinum-based chemotherapy could enhance tumour-specific neoantigen release via induction of tumour cell apoptosis [30], which might be the reason why patients with high TMB were more sensitive to ACT in our study. However, emerging evidence showed that patients with limited pre-existing immune infiltration failed to benefit from chemotherapy [31]. It has been well established that the expression of PD-L1 indicated a sustained immune response regulated by immunosuppressive factors in TME [32]. Here, we found that the expression of PD-L1 was related to ACT response. Several studies have also observed that PD-L1 expression was correlated with chemotherapy benefit in lung adenocarcinoma and colorectal cancer [33, 34]. Nevertheless, patients with high PD-L1 and TMB may not benefit from ICIs and ACT due to the lack of tumour-specific effector T cells, considering the vast majority of tumour-infiltrating CD8⁺ T cells were bystanders without response to tumour-specific neoantigens [35]. Previous research has established that the success of cancer immunotherapies depends on neoantigen-specific T cell reactivity [36]. We observed higher response rates and longer OS in patients with high level of CD39, which is a marker of tumour-reactive T cells [12]. The correlation between therapeutic benefit and CD39 was also reported in hepatocellular carcinoma and non-small cell lung cancer [37, 38]. Furthermore, considering CD39 expression might represent the existence of tumour-reactive T cells, which was the premise of reactivation, a combination of CD39, PD-L1 and TMB could better

stratify patients who received ICIs and ACT. Consistent with the above results, we observed that higher CPT scores were correlated with enriched APOBEC mutational signatures and neoantigens, enhanced antigen presentation and inflamed TME, which have been reported to be indicative of improved immunotherapeutic efficacy [15, 39, 40].

Recently, three antibodies targeting CD39 have entered clinical trials (NCT03884556, NCT04261075, NCT04336098) based on the fundamental insights of downstream immunosuppressive adenosine [41]. Blocking the activity of CD39 can be a promising immunotherapeutic strategy by reducing the synthesis of adenosine and decreasing the fast hydrolysis of pro-inflammatory eATP. In addition, the combination of platinum-based chemotherapy and anti-PD-1/PD-L1 agents has become a research hotspot in the clinic [42]. CD39 expression and the constructed CPT score may also provide guidance for these emerging therapeutic strategies in the future.

There were several limitations in the present study. Our study was retrospective and further confirmation of our findings within the framework of larger and multi-centred clinical trials was required. The thresholds for patient grouping were not bioanalytically validated, which might impact the reproducibility and required further identification of the thresholds. In ZSHS cohort, we did not perform genome sequencing for each patient after surgery since the excessive storage time of the tissue restrict us from further assessing TMB level in these patients at present. The assessment methods of PD-L1 expression and TMB in IMvigor210 and TCGA cohorts were not consistent, which asked for further verification of their correlation.

In summary, the present study demonstrated that CD39 predicted clinical efficacy of PD-L1 blockade or cisplatin-based adjuvant chemotherapy independently in MIBC. A composite of CD39, PD-L1 and TMB showed improved performance in predicting response and could serve as a candidate predictive biomarker for patient-tailored treatment decisions.

DATA AVAILABILITY

All data generated that are relevant to the results presented here are included in this article. Other data that were not relevant for the results are available from the corresponding author WZ upon reasonable request.

REFERENCES

- Bray F, Ferlay J, Soerjomataram I, Siegel RL, Torre LA, Jemal A. Global cancer statistics 2018: GLOBOCAN estimates of incidence and mortality worldwide for 36 cancers in 185 countries. *CA Cancer J Clin.* 2018;68:394–424.
- Alfred Witjes J, Lebre T, Compérat EM, Cowan NC, De Santis M, Bruins HM, et al. Updated 2016 EAU guidelines on muscle-invasive and metastatic bladder cancer. *Eur Urol.* 2017;71:462–75.
- Lenis AT, Lec PM, Chamie K, Mshs MD. Bladder cancer: a review. *JAMA.* 2020;324:1980–91.
- Patel VG, Oh WK, Galsky MD. Treatment of muscle-invasive and advanced bladder cancer in 2020. *CA Cancer J Clin.* 2020;70:404–23.
- Schoenfeld AJ, Rizvi H, Bandlamudi C, Sauter JL, Travis WD, Rekhman N, et al. Clinical and molecular correlates of PD-L1 expression in patients with lung adenocarcinomas. *Ann Oncol.* 2020;31:599–608.
- Sha D, Jin Z, Budczies J, Kluck K, Stenzinger A, Sinicrope FA. Tumor mutational burden as a predictive biomarker in solid tumors. *Cancer Discov.* 2020;10:1808–25.
- Mariathasan S, Turley SJ, Nickles D, Castiglioni A, Yuen K, Wang Y, et al. TGF β attenuates tumour response to PD-L1 blockade by contributing to exclusion of T cells. *Nature.* 2018;554:544–8.
- Powles T, Sridhar SS, Loriot Y, Bellmunt J, Mu XJ, Ching KA, et al. Avelumab maintenance in advanced urothelial carcinoma: biomarker analysis of the phase 3 JAVELIN Bladder 100 trial. *Nat Med.* 2021;27:2200–11.
- Chiarella AM, Ryu YK, Manji GA, Rustgi AK. Extracellular ATP and adenosine in cancer pathogenesis and treatment. *Trends Cancer.* 2021;7:731–50.
- Di Virgilio F, Sarti AC, Falzoni S, De Marchi E, Adinolfi E. Extracellular ATP and P2 purinergic signalling in the tumour microenvironment. *Nat Rev Cancer.* 2018;18:601–18.
- Boison D, Yegutkin GG. Adenosine metabolism: emerging concepts for cancer therapy. *Cancer Cell.* 2019;36:582–96.
- Kortekaas KE, Santegoets SJ, Sturm G, Ehsan I, van Egmond SL, Finotello F, et al. CD39 identifies the CD4(+) tumor-specific T-cell population in human cancer. *Cancer Immunol Res.* 2020;8:1311–21.
- Wang JB, Li P, Liu XL, Zheng QL, Ma YB, Zhao YJ, et al. An immune checkpoint score system for prognostic evaluation and adjuvant chemotherapy selection in gastric cancer. *Nat Commun.* 2020;11:6352.
- McGrail DJ, Pilié PG, Rashid NU, Voorwerk L, Slagter M, Kok M, et al. High tumor mutation burden fails to predict immune checkpoint blockade response across all cancer types. *Ann Oncol.* 2021;32:661–72.
- Ott PA, Bang Y-J, Piha-Paul SA, Razak ARA, Bannouna J, Soria J-C, et al. T-cell-inflamed gene-expression profile, programmed death ligand 1 expression, and tumor mutational burden predict efficacy in patients treated with pembrolizumab across 20 cancers: KEYNOTE-028. *J Clin Oncol.* 2018;37:318–27.
- Thorsson V, Gibbs DL, Brown SD, Wolf D, Bortone DS, Ou Yang TH, et al. The immune landscape of cancer. *Immunity.* 2018;48:812.e14–30.e14.
- Barbie DA, Tamayo P, Boehm JS, Kim SY, Moody SE, Dunn IF, et al. Systematic RNA interference reveals that oncogenic KRAS-driven cancers require TBK1. *Nature.* 2009;462:108–12.
- Bagaev A, Kotlov N, Nomie K, Svekolkin V, Gafurov A, Isaeva O, et al. Conserved pan-cancer microenvironment subtypes predict response to immunotherapy. *Cancer Cell.* 2021;39:845.e7–65.e7.
- Calderaro J, Petitprez F, Becht E, Laurent A, Hirsch TZ, Rousseau B, et al. Intratumoral tertiary lymphoid structures are associated with a low risk of early recurrence of hepatocellular carcinoma. *J Hepatol.* 2019;70:58–65.
- Bi K, He MX, Bakouny Z, Kanodia A, Napolitano S, Wu J, et al. Tumor and immune reprogramming during immunotherapy in advanced renal cell carcinoma. *Cancer Cell.* 2021;39:649.e5–61.e5.
- Ayers M, Lunceford J, Nebozhyn M, Murphy E, Loboda A, Kaufman DR, et al. IFN- γ -related mRNA profile predicts clinical response to PD-1 blockade. *J Clin Invest.* 2017;127:2930–40.
- Hu B, Wang Z, Zeng H, Qi Y, Chen Y, Wang T, et al. Blockade of DC-SIGN(+) tumor-associated macrophages reactivates antitumor immunity and improves immunotherapy in muscle-invasive bladder cancer. *Cancer Res.* 2020;80:1707–19.
- Fink S, Yuan D, Stein I, Taniguchi K, Weber A, Unger K, et al. Ectopic lymphoid structures function as microniches for tumor progenitor cells in hepatocellular carcinoma. *Nat Immunol.* 2015;16:1235–44.
- Driscoll CB, Schuelke MR, Kottke T, Thompson JM, Wongthida P, Tonne JM, et al. APOBEC3B-mediated corruption of the tumor cell immunopeptidome induces heteroclitic neoepitopes for cancer immunotherapy. *Nat Commun.* 2020;11:790.
- Canale FP, Ramello MC, Núñez N, Araujo Furlan CL, Bossio SN, Gorosito Serrán M, et al. CD39 expression defines cell exhaustion in tumor-infiltrating CD8(+) T cells. *Cancer Res.* 2018;78:115–28.
- Robertson AG, Kim J, Al-Ahmadie H, Bellmunt J, Guo G, Cherniack AD, et al. Comprehensive molecular characterization of muscle-invasive bladder. *Cancer Cell.* 2017;171:540.e25–56.e25.
- Litchfield K, Reading JL, Puttick C, Thakkar K, Abbosh C, Bentham R, et al. Meta-analysis of tumor- and T cell-intrinsic mechanisms of sensitization to checkpoint inhibition. *Cell.* 2021;184:596–614. e14
- O'Donnell JS, Teng MWL, Smyth MJ. Cancer immunoeediting and resistance to T cell-based immunotherapy. *Nat Rev Clin Oncol.* 2019;16:151–67.
- Chan TA, Yarchoan M, Jaffee E, Swanton C, Quezada SA, Stenzinger A, et al. Development of tumor mutation burden as an immunotherapy biomarker: utility for the oncology clinic. *Ann Oncol.* 2019;30:44–56.
- Hato SV, Khong A, de Vries IJ, Lesterhuis WJ. Molecular pathways: the immunogenic effects of platinum-based chemotherapeutics. *Clin Cancer Res.* 2014;20:2831–7.
- Yang Y, Sun J, Wang Z, Fang J, Yu Q, Han B, et al. Updated overall survival data and predictive biomarkers of sintilimab plus pemetrexed and platinum as first-line treatment for locally advanced or metastatic nonsquamous NSCLC in the phase 3 ORIENT-11 study. *J Thorac Oncol.* 2021;16:2109–20.
- Shen X, Zhao B. Efficacy of PD-1 or PD-L1 inhibitors and PD-L1 expression status in cancer: meta-analysis. *BMJ.* 2018;362:k3529.
- Gross DJ, Chintala NK, Vaghjiani RG, Grosser R, Tan KS, Li X, et al. Tumor and tumor-associated macrophage programmed death-ligand 1 expression is associated with adjuvant chemotherapy benefit in lung adenocarcinoma. *J Thorac Oncol.* 2022;17:89–102.
- Feng D, Qin B, Pal K, Sun L, Dutta S, Dong H, et al. BRAF(V600E)-induced, tumor intrinsic PD-L1 can regulate chemotherapy-induced apoptosis in human colon cancer cells and in tumor xenografts. *Oncogene.* 2019;38:6752–66.
- Simoni Y, Becht E, Fehlings M, Loh CY, Koo SL, Teng KWW, et al. Bystander CD8(+) T cells are abundant and phenotypically distinct in human tumour infiltrates. *Nature.* 2018;557:575–9.
- Schumacher TN, Schreiber RD. Neoantigens in cancer immunotherapy. *Science.* 2015;348:69–74.
- Liu T, Tan J, Wu M, Fan W, Wei J, Zhu B, et al. High-affinity neoantigens correlate with better prognosis and trigger potent antihepatocellular carcinoma (HCC) activity by activating CD39(+)CD8(+) T cells. *Gut.* 2021;70:1965–77.
- Koh J, Kim Y, Lee KY, Hur JY, Kim MS, Kim B, et al. MDSC subtypes and CD39 expression on CD8(+) T cells predict the efficacy of anti-PD-1 immunotherapy in patients with advanced NSCLC. *Eur J Immunol.* 2020;50:1810–9.
- Boichard A, Pham TV, Yeerna H, Goodman A, Tamayo P, Lippman S, et al. APOBEC-related mutagenesis and neo-peptide hydrophobicity: implications for response to immunotherapy. *Oncoimmunology.* 2019;8:1550341.
- Wang S, He Z, Wang X, Li H, Liu X-S. Antigen presentation and tumor immunogenicity in cancer immunotherapy response prediction. *Elife.* 2019;8:e49020.
- Moesta AK, Li XY, Smyth MJ. Targeting CD39 in cancer. *Nat Rev Immunol.* 2020;20:739–55.
- Gandhi L, Rodríguez-Abreu D, Gadgeel S, Esteban E, Felip E, De Angelis F, et al. Pembrolizumab plus chemotherapy in metastatic non-small-cell lung cancer. *N Engl J Med.* 2018;378:2078–92.

ACKNOWLEDGEMENTS

We thank Dr. Lingli Chen (Department of Pathology, Zhongshan Hospital, Fudan University, Shanghai, China) and Dr. Yunyi Kong (Department of Pathology, Fudan University Shanghai Cancer Center, Shanghai, China) for their excellent pathological technology help.

AUTHOR CONTRIBUTIONS

CL, ZL, KJ and HZ contributed to acquisition of data, analysis and interpretation of data, statistical analysis and drafting of the manuscript; FS, YC, YW and LX contributed to technical and material support; ZW, YZ and WZ contributed to study concept and design, analysis and interpretation of data, drafting of the manuscript, obtained funding and study supervision. All authors read and approved the final manuscript.

FUNDING

This study was funded by grants from National Natural Science Foundation of China (81871306, 81872082, 82002670, 82103408), Shanghai Municipal Natural Science Foundation (19ZR1431800, 22ZR1413400), Shanghai Sailing Program (21YF1407000) and Fudan University Shanghai Cancer Center for Outstanding Youth Scholars Foundation (YJYQ201802). All these study sponsors have no roles in the study design, in the collection, analysis and interpretation of data.

COMPETING INTERESTS

The authors declare no competing interests.

ETHICS APPROVAL AND CONSENT TO PARTICIPATE

This study was approved by the Clinical Research Ethics Committee of Zhongshan Hospital and Fudan University (No. B2015-030). Written informed consent was obtained from each patient.

ADDITIONAL INFORMATION

Supplementary information The online version contains supplementary material available at <https://doi.org/10.1038/s41416-022-01943-y>.

Correspondence and requests for materials should be addressed to Zewei Wang, Yu Zhu or Weijuan Zhang.

Reprints and permission information is available at <http://www.nature.com/reprints>

Publisher's note Springer Nature remains neutral with regard to jurisdictional claims in published maps and institutional affiliations.



Open Access This article is licensed under a Creative Commons Attribution 4.0 International License, which permits use, sharing, adaptation, distribution and reproduction in any medium or format, as long as you give appropriate credit to the original author(s) and the source, provide a link to the Creative Commons license, and indicate if changes were made. The images or other third party material in this article are included in the article's Creative Commons license, unless indicated otherwise in a credit line to the material. If material is not included in the article's Creative Commons license and your intended use is not permitted by statutory regulation or exceeds the permitted use, you will need to obtain permission directly from the copyright holder. To view a copy of this license, visit <http://creativecommons.org/licenses/by/4.0/>.

© The Author(s) 2022