



# Otopathogenic *Pseudomonas aeruginosa* Enters and Survives Inside Macrophages

Rahul Mittal<sup>1\*</sup>, Christopher V. Lisi<sup>1</sup>, Hansi Kumari<sup>2</sup>, M'hamed Grati<sup>1</sup>, Patricia Blackwelder<sup>3,4</sup>, Denise Yan<sup>1</sup>, Chaitanya Jain<sup>5</sup>, Kalai Mathee<sup>2,6</sup>, Paulo H. Weckwerth<sup>7</sup> and Xue Z. Liu<sup>1\*</sup>

<sup>1</sup> Department of Otolaryngology, Miller School of Medicine, University of Miami, Miami, FL, USA, <sup>2</sup> Department of Human and Molecular Genetics, Herbert Wertheim College of Medicine, Florida International University, Miami, FL, USA, <sup>3</sup> Chemistry Department, Center for Advanced Microscopy, University of Miami, Coral Gables, FL, USA, <sup>4</sup> Rosenstiel School of Marine and Atmospheric Science, University of Miami, Key Biscayne, FL, USA, <sup>5</sup> Department of Biochemistry and Molecular Biology, Miller School of Medicine, University of Miami, Miami, FL, USA, <sup>6</sup> Global Health Consortium and Biomolecular Science Institute, Florida International University, Miami, FL, USA, <sup>7</sup> Health Sciences Department, University of Sagrado Coração, Bauru, Brazil

## OPEN ACCESS

### Edited by:

Yuji Morita,  
Aichi Gakuin University, Japan

### Reviewed by:

Gabriele Margos,  
Bavarian Health and Food Safety  
Authority, Germany  
Shreekumar R. Pillai,  
Alabama State University, USA  
Ruth Thornton,  
University of Western Australia,  
Australia  
Yi Wang,  
U.S. Food and Drug Administration,  
USA

### \*Correspondence:

Xue Z. Liu  
xliu@med.miami.edu  
Rahul Mittal  
r.mittal11@med.miami.edu

### Specialty section:

This article was submitted to  
Infectious Diseases,  
a section of the journal  
Frontiers in Microbiology

**Received:** 05 June 2016

**Accepted:** 31 October 2016

**Published:** 18 November 2016

### Citation:

Mittal R, Lisi CV, Kumari H, Grati M, Blackwelder P, Yan D, Jain C, Mathee K, Weckwerth PH and Liu XZ (2016) Otopathogenic *Pseudomonas aeruginosa* Enters and Survives Inside Macrophages. *Front. Microbiol.* 7:1828. doi: 10.3389/fmicb.2016.01828

Otitis media (OM) is a broad term describing a group of infectious and inflammatory disorders of the middle ear. Despite antibiotic therapy, acute OM can progress to chronic suppurative otitis media (CSOM) characterized by ear drum perforation and purulent discharge. *Pseudomonas aeruginosa* is the most common pathogen associated with CSOM. Although, macrophages play an important role in innate immune responses but their role in the pathogenesis of *P. aeruginosa*-induced CSOM is not known. The objective of this study is to examine the interaction of *P. aeruginosa* with primary macrophages. We observed that *P. aeruginosa* enters and multiplies inside human and mouse primary macrophages. This bacterial entry in macrophages requires both microtubule and actin dependent processes. Transmission electron microscopy demonstrated that *P. aeruginosa* was present in membrane bound vesicles inside macrophages. Interestingly, deletion of *oprF* expression in *P. aeruginosa* abrogates its ability to survive inside macrophages. Our results suggest that otopathogenic *P. aeruginosa* entry and survival inside macrophages is OprF-dependent. The survival of bacteria inside macrophages will lead to evasion of killing and this lack of pathogen clearance by phagocytes contributes to the persistence of infection in CSOM. Understanding host–pathogen interaction will provide novel avenues to design effective treatment modalities against OM.

**Keywords:** otopathogenic *P. aeruginosa*, monocyte-derived macrophages, mouse bone marrow-derived macrophages, cell viability

## INTRODUCTION

Innate immune system serves as the first-line of defense against invading pathogens during infection (Alberts et al., 2002; Clarke, 2014). One of the principal components of the innate immune system are macrophages (Tam and Aderem, 2014; Divangahi et al., 2015; Hume, 2015; Schultze et al., 2015). They are considered as “professional phagocytes” that play a crucial role in eradication of pathogens through phagocytosis leading to clearance of infection (Aderem, 2003).

Stimuli like infections lead to activation of macrophages. In addition, they can rapidly attract neutrophils, monocytes and other immune cells from the blood and hematopoietic tissues to the site of infection by the release of cytokines and chemotactic substances (Zhang and Wang, 2014). This leads to an efficient orchestration of both innate and adaptive host immune responses. Given the prominent role of macrophages as an effector cell type in the host immune responses, it is not surprising that certain pathogens have evolved strategies to evade killing and use macrophages as a shield against cell-mediated and humoral immune responses to cause infection in humans. Some pathogens inhibit phagocytosis and subsequently activation of macrophages (Fällman et al., 2002). However, no information is available regarding host–pathogen interplay in the pathogenesis of otitis media (OM).

Otitis media refers to any inflammatory or infectious process involving the middle ear (Cunningham et al., 2012; Minovi and Dazert, 2014; Atkinson et al., 2015; Wallis et al., 2015). Chronic suppurative OM (CSOM) is a chronic inflammation of the middle ear characterized by persistent middle ear drainage through the perforated tympanic membrane for more than 6 weeks (Bluestone, 1998; Qureishi et al., 2014; Mittal et al., 2015). The most common cause of CSOM is the bacterial infection (Meyerhoff, 1988; Mittal et al., 2015). *Pseudomonas aeruginosa* is one of the leading causes of CSOM (Yeo et al., 2007; Dayasena et al., 2011; Madana et al., 2011; Afolabi et al., 2012). CSOM is one of the largest public health burdens worldwide leading to hearing loss and life-threatening central nervous system complications, including brain abscess and meningitis (Chew et al., 2012; Yorgancılar et al., 2013; Sun and Sun, 2014). There is an urgent need to develop new therapies to combat this disease and help prevent complications associated with it. Understanding the role of host immunity in the pathogenesis of CSOM will open up novel avenues of treatment against the disease other than antibiotics.

Macrophages are an integral component of innate immunity and provide efficient protection against pathogens; however, the role of macrophages in CSOM has not been elucidated. In this study, we characterized the interaction of otopathogenic *P. aeruginosa* with primary human monocyte-derived macrophages (MDMs) and mouse bone marrow-derived macrophages (BMM $\phi$ ), *in vitro*. Our data suggests that otopathogenic *P. aeruginosa* enters and survives inside human MDMs and mouse BMM $\phi$ . Since bacterial outer membrane proteins (OMPs) play a crucial role in interaction of pathogens with immune cells (Confer and Ayalew, 2013), we determined the role of *P. aeruginosa* OprF in bacterial survival inside macrophages. OprF is the major OMP of *P. aeruginosa* and has been demonstrated to play an important role in interaction of this pathogen with host cells (Nestorovich et al., 2006; Bouffartigues et al., 2012; Reusch, 2012; Mishra et al., 2015). We observed that survival of otopathogenic *P. aeruginosa* inside macrophages requires bacterial *oprF* expression. The ability of *P. aeruginosa* to survive inside macrophages enables it to escape killing by potent host immune responses and this lack of clearance by phagocytes contributes to the persistence of infection in CSOM.

## MATERIALS AND METHODS

### Cell Culture

Mouse BMM $\phi$  were generated by harvesting bone marrow cells from murine tibias and femurs as described earlier (Godek et al., 2006; Weischenfeldt and Porse, 2008). Briefly, bone marrow cells were flushed from mouse bones (C57 BL6), and then differentiated into a macrophage phenotype by incubating in complete DMEM (cDMEM, 10% heat inactivated fetal bovine serum (FBS, Hyclone<sup>®</sup>, Logan, UT, USA), 30% L-929 fibroblast conditioned medium, 1% penicillin–streptomycin (Gibco, Carlsbad, CA, USA), 0.01 M Hepes buffer, 1 mM sodium pyruvate, and 1% of a  $\times 100$  MEM non-essential amino acids solution (all from Sigma, St. Louis, MO, USA) in Dulbecco's modified Eagle's medium (DMEM, Mediatech, Herndon, VA, USA). Cells were differentiated for 7 days with media changes every 2 days. This study was carried out in accordance with the recommendations in the Guide for the Care and Use of Laboratory Animals of the National Institutes of Health (NIH). The protocol was approved by the Institutional Animal Care and Use Committee (IACUC) of the University of Miami.

Human MDMs were generated by separating monocytes from peripheral blood obtained from healthy blood donors, as previously described (Welin et al., 2008; Eklund et al., 2010; Meng et al., 2015; Shinzaki et al., 2016). Donors were between age groups of 25–50 years, of either sex and were free from blood-borne diseases. In brief, monocytes were obtained by layering blood onto a density gradient, followed by centrifugation and isolation of the monocyte/lymphocyte fraction. Cells were seeded in culture flasks and allowed to adhere for 2 h before non-adherent lymphocytes were washed away. The monocytes were allowed to differentiate into human MDMs for 5–8 days in DMEM (Gibco, Carlsbad, CA, USA) containing 25 mM Hepes, 100 U/ml penicillin, 100  $\mu$ g/ml streptomycin and 10% active human serum (all Sigma, St. Louis, MO, USA). All cell cultures were incubated under 37°C, 5% CO<sub>2</sub>, 98% humidity. Human whole blood was obtained from commercial vendors including Interstate blood bank and followed NIH guidelines for the protection of human subjects including informed signed consent from all subjects by these vendors. All the information regarding human subjects was deidentified and investigators were having no access to any human subject information. The institutional review board (IRB) of the University of Miami approved the study protocol.

### Bacterial Strains

The clinical strains of *P. aeruginosa* (10 strains) isolated from CSOM patients attending University of Miami Hospital or Hospital for Rehabilitation of Craniofacial Anomalies of the University of São Paulo, Bauru, Brazil were used in this study. The patients exhibited persistent chronic purulent otorrhoea through perforated tympanic membrane for more than 6 weeks confirmed by otolaryngologic diagnosis. The isolation and identification of *P. aeruginosa* was performed using standard methods (MacFaddin, 1976; Forbes et al., 1998). The *oprF* mutant and complemented strain of *P. aeruginosa* was generated as

described in previous studies (Woodruff and Hancock, 1989; Horton et al., 1990; Schweizer and Hoang, 1995; Rietsch et al., 2005; Balasubramanian et al., 2012; Yakhnina et al., 2015) (Supplementary Materials). Bacteria were grown overnight at 37°C in Luria broth (LB) (Teknova, Hollister, CA, USA) in a rotary shaker.

## Invasion Assays

Gentamicin protection assays were used to quantify the extent of human MDM and mouse BMM $\phi$  invasion and survival by otopathogenic *P. aeruginosa*. Briefly, cells were infected with bacteria at 1:1, 5:1, 10:1, 25:1, 50:1, 100:1 multiplicity of infection (MOI) (bacteria:cell) for 1, 2, 4, and 6 h. After incubation, the cells were washed five times with warm RPMI medium (Corning, NY, USA) followed by addition of medium containing gentamicin (200  $\mu$ g/ml) (Life Technologies, Carlsbad, CA, USA) and further incubated for 1 h at 37°C. All *P. aeruginosa* isolates we used in this study were sensitive to gentamicin at this concentration. The cells were washed three times with RPMI and then lysed with 1% saponin (Sigma, St. Louis, MO, USA) to release intracellular bacteria. Serial dilutions were then plated on blood agar plates and bacterial colonies were counted the next day. In some experiments, bacteria were pretreated with 20% human or mouse pooled serum or heat inactivated pooled serum and then used to infect human MDMs and mouse BMM $\phi$ , respectively. In some experiments, bacteria were pretreated with monoclonal anti-OprF antibody (kindly provided by Dr. Hancock) and then used in the invasion assay. The monoclonal antibody (mAb) was specific to surface epitopes of OprF and was generated as described previously (Finnen et al., 1992; Rawling et al., 1995). To determine the effect of cytoskeletal inhibitors, macrophages were pretreated with different concentrations of cytochalasin D, vinblastine, nocodazole, or colchicine (all from Sigma, St. Louis, MO, USA) for 30 min before infecting with bacteria, and maintained in the medium for the entire infection period.

## Scanning Electron Microscopy (SEM)

Human MDMs and mouse BMM $\phi$  were cultured on glass cover slips and were infected with bacteria for 30 min to 8 h. After incubation, the cells were washed five times with warm phosphate buffer saline (PBS) buffer (Sigma, St. Louis, MO, USA) to remove unbound bacteria and were then processed for scanning electron microscopy (SEM). Samples were fixed in 2% glutaraldehyde (Electron Microscopy Sciences, Hatfield, PA, USA) in PBS buffer followed by three changes of PBS buffer for 10 min each. The samples were then post-fixed in 1% osmium tetroxide (Electron Microscopy Sciences, Hatfield, PA, USA) in PBS buffer for 45 min and rinsed in three changes of PBS buffer for 10 min each. The samples were dehydrated in a graded series of ethanol, dried in hexamethyldisilazane (HMDS) (Electron Microscopy Sciences, Hatfield, PA, USA) and mounted on carbon adhesive tabs fixed to metal stubs. The samples were coated with palladium in a plasma sputter coater and viewed in a SEM (FEI, ESEM-FEG XL-30).

## Transmission Electron Microscopy (TEM)

Human MDMs and mouse BMM $\phi$  were infected with bacteria for 30 min to 8 h. After incubation, the cells were washed with

PBS and fixed using 2% glutaraldehyde (Electron Microscopy Sciences, Hatfield, PA, USA). The samples were rinsed in three washes of PBS buffer then post-fixed in 1% osmium tetroxide (Electron Microscopy Sciences, Hatfield, PA, USA) in 0.1 M phosphate buffer for 1 h. After buffer rinses, specimens were dehydrated through a series of graded ethanol, placed in two rinses of propylene oxide (Electron Microscopy Sciences, Hatfield, PA, USA) for 5 min each and then put in a 1:1 mixture of propylene oxide: EMBED/ARALDITE resin (Electron Microscopy Sciences, Hatfield, PA, USA) for overnight incubation at room temperature. Next day, the pellets were placed in fresh EMBED/ARALDITE and put in a vacuum desiccator for 2–4 h. The samples were changed to fresh EMBED/ARALDITE and polymerized overnight. Silver/gold sections were then cut on a Leica Ultracut E (Leica, Buffalo Grove, IL, USA), stained in uranyl acetate (Electron Microscopy Sciences, Hatfield, PA, USA) and lead citrate (Electron Microscopy Sciences, Hatfield, PA, USA), and viewed in a JEOL 1400 electron microscope (JEOL, Peabody, MA, USA) with Gatan Orius SC1000 camera (Gatan, Pleasanton, CA, USA).

## Immunofluorescence

For staining of bacteria and actin, human MDMs and mouse BMM $\phi$  were cultured in 8-well chamber slides and infected with *P. aeruginosa* for 30 min to 8 h. After incubation, cells were washed three times with PBS buffer and then fixed and permeabilized with BD cytofix and cytoperm reagent (BD Biosciences, San Jose, CA, USA) for 30 min. After washing, the cells were blocked with 3% normal goat serum (NGS) (Life Technologies, Carlsbad, CA, USA) for 20 min and then incubated with anti-*P. aeruginosa* antibody (1:200) (Abcam, Cambridge, MA, USA) for 45 min followed by Alexa Fluor 488 antibody (1:1000) (Life Technologies, Carlsbad, CA, USA). After washing, cells were counterstained for actin with rhodamine phalloidin (Life Technologies, Carlsbad, CA, USA) for 45 min, washed and mounted in an antifade Vectashield solution containing 4, 6-diamidino-2-phenylindole (DAPI) (Vector Laboratories, Burlingame, CA, USA). The cells were viewed with a Zeiss LSM 710 microscope (Carl Zeiss, Germany) and images were assembled using Adobe photoshop 7.0.

## Cell Viability

To evaluate the cytotoxic effects of *P. aeruginosa* on human MDMs and mouse BMM $\phi$  during the course of infection, cells were seeded in 96 well plates and infected with bacteria for 2–24 h at an MOI of 10. Lactate dehydrogenase (LDH) levels were then determined in cell culture supernatants using commercially available kit, as per the manufacturer's instructions (Cayman Chemical, Ann Arbor, MI, USA). Uninfected cells were included as negative control. Maximum LDH release induced by treatment of macrophages with 1% Triton X-100 (Sigma, St. Louis, MO, USA) was used as a positive control. Results were expressed as percentage LDH release compared to the positive control.

The viability of *P. aeruginosa* infected human MDMs and mouse BMM $\phi$  was also determined by ethidium homodimer-1 staining (Eidet et al., 2015; McCanna et al., 2015; Yoeruek et al., 2016). Ethidium homodimer-1 enters inside dead cells through

the disrupted plasma membrane and binds to nucleic acids that increase its fluorescence intensity leading to the production of red fluorescence. Live cells exclude ethidium homodimer-I staining due to the intact plasma membrane. Human MDMs and mouse BMM $\phi$  were infected with bacteria for 2–24 h time periods at an MOI of 10 and then stained with ethidium homodimer-1. Fluorescence was then determined using a microplate reader with appropriate filters (excitation at 535 nm and emission at 620 nm). The percentage dead cells were then calculated using the following formula:

$$\% \text{Dead Cells} = \frac{[F(620 \text{ nm})_{\text{sample}} - F(620 \text{ nm})_{\text{minimum}}]}{\times 100 / [F(620 \text{ nm})_{\text{maximum}} - F(620 \text{ nm})_{\text{minimum}}]}$$

where  $F(620 \text{ nm})$  is fluorescence intensity at a wavelength of 620 nm,  $F(620 \text{ nm})_{\text{sample}}$  is fluorescence intensity of human MDMs and mouse BMM $\phi$  infected with *P. aeruginosa*,  $F(620 \text{ nm})_{\text{minimum}}$  is fluorescence intensity of uninfected human MDMs and mouse BMM $\phi$ , and  $F(620 \text{ nm})_{\text{maximum}}$  is fluorescence intensity of human MDMs and mouse BMM $\phi$  treated with 1% Triton X-100 (Sigma, St. Louis, MO, USA).

## Statistical Analysis

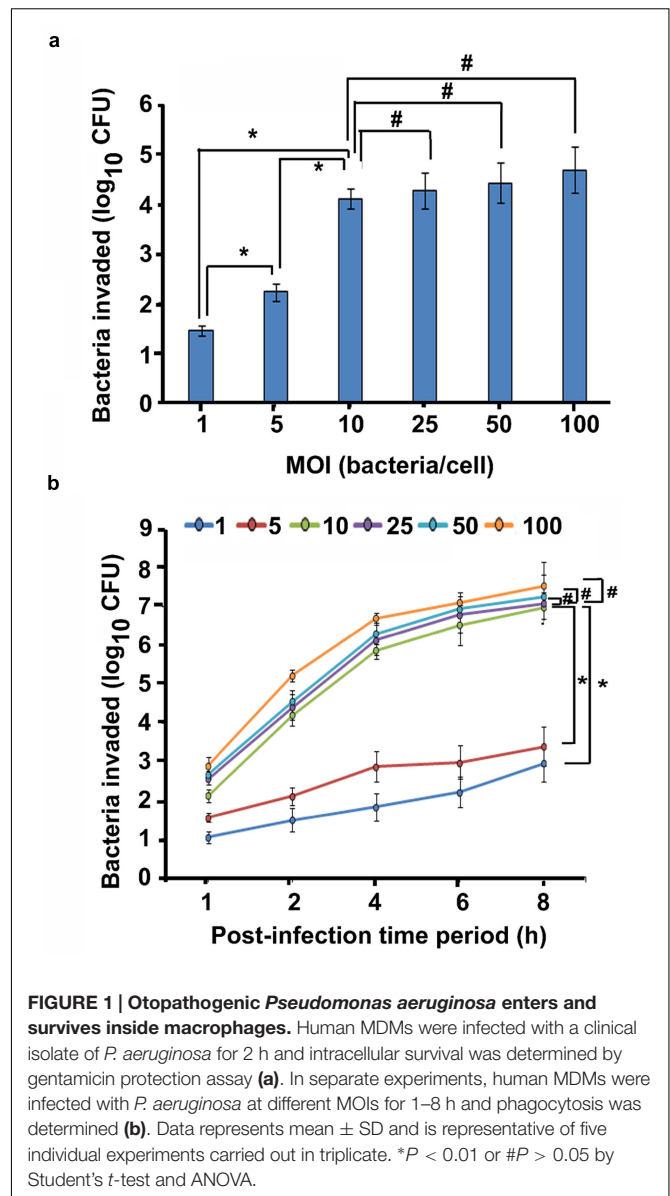
Statistical significance was determined by a paired, two-tailed Student's *t*-test and ANOVA using SPSS software. Values of  $P < 0.05$  were considered to be statistically significant.

## RESULTS

### Otopathogenic *P. aeruginosa* Enters and Survives Inside Primary Human MDMs and Mouse BMM $\phi$

Since *P. aeruginosa* is the major etiological agent of CSOM, we hypothesize that this pathogen hijacks host innate immunity that forms the first line of defense. To test this hypothesis, we examined the ability of a clinical isolate of *P. aeruginosa* from CSOM patient to enter and survive inside primary human and mouse macrophages by gentamicin protection assay at different MOIs for 2 h. We observed that *P. aeruginosa* is able to enter and survive inside macrophages. At an MOI of 1, log 1.45 colony forming unit (cfu) bacteria were recoverable from human MDMs whereas log 1.12 cfu bacteria were demonstrable inside mouse BMM $\phi$  (Figure 1a). The number of bacteria inside human MDMs increased from 2.23 to 4.11 log cfu with a corresponding increase in MOI from 5 to 10 (Figure 1a). Similar increase in number of bacteria was observable inside mouse BMM $\phi$ . The number of bacteria increased from log 2.11 log cfu at an MOI of 5 to log 3.48 cfu at an MOI of 10 (Supplementary Figure S1a). Further increase in MOI to 25, 50, and 100 caused only marginal increase in number of bacteria inside human MDMs and mouse BMM $\phi$  ( $P > 0.05$ ). Therefore, we selected a MOI of 10 and post-infection time period of 2 h for further experiments.

In order to determine the effect of increasing infection time on the cell invasion, macrophages and *P. aeruginosa* were incubated



for several time-points. By 1 h post-infection time period, 1.04 log cfu bacteria were demonstrable inside human MDMs that increased to 2.96 log cfu bacteria by 8 h post-infection at an MOI of 1 (Figure 1b). At an MOI of 5 and 10, there were 1.56 and 2.12 log cfu bacteria at 1 h post-infection that increased to 3.39 and 6.98 at 8 h post-infection time period respectively. At a high MOI of 100, 7.55 log cfu bacteria were recoverable from human MDMs at 8 h post-infection time period. Mouse BMM $\phi$  also demonstrated increase in bacterial load with the corresponding increase in post-infection time period from 1 to 8 h at all MOIs (Supplementary Figure S1b). Similar results of human MDM and mouse BMM $\phi$  invasion was observed with nine additional *P. aeruginosa* CSOM clinical isolates at an MOI of 10 (Supplementary Figures S2 and S3). There was increase in bacterial load in both human MDMs and mouse BMM $\phi$  with increase in post-infection time period from 2 to 6 h. Taken



together, these results suggest that otopathogenic *P. aeruginosa* invades human MDMs and mouse BMM $\phi$  in a time and dose dependent manner.

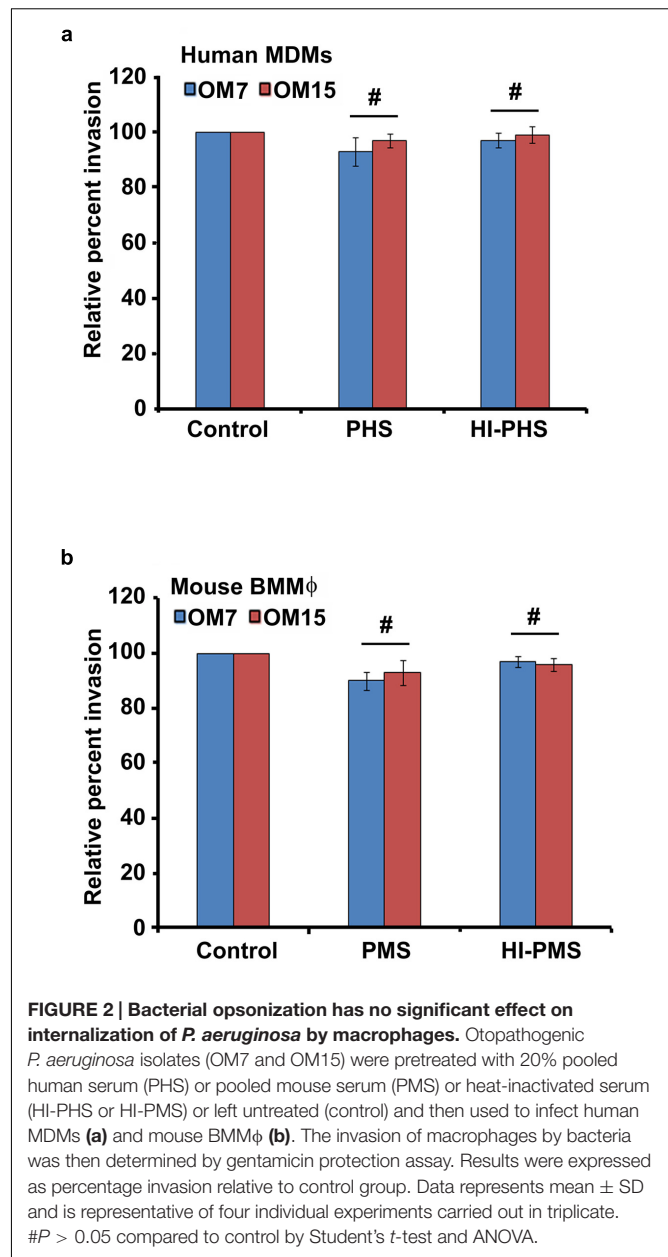
## Opsonization Has No Effect on the Invasion of Macrophages by *P. aeruginosa*

Complement proteins are constitutively present in the serum and can opsonize bacteria non-specifically promoting pathogen killing and clearance of infection (Daha, 2010; Merle et al., 2015; Varela and Tomlinson, 2015). Therefore, we evaluated whether complement affects the phagocytosis of *P. aeruginosa* by macrophages. To determine the effect of opsonins on the survival of *P. aeruginosa*, two CSOM bacterial isolates were opsonized with fresh normal or heat-inactivated human or mouse pooled serum or were treated with medium alone prior to infection of human MDMs and mouse BMM $\phi$ . Interestingly, there was no statistical difference in the number of non-opsonized and opsonized bacteria in human MDMs and mouse BMM $\phi$  ( $P > 0.05$ ; **Figures 2a,b**). The heat-inactivated serum also had no significant effect on the ability of otopathogenic *P. aeruginosa* to invade macrophages ( $P > 0.05$ ). These results suggest that complement did not play a significant role in invasion of human MDMs and mouse BMM $\phi$  by *P. aeruginosa*.

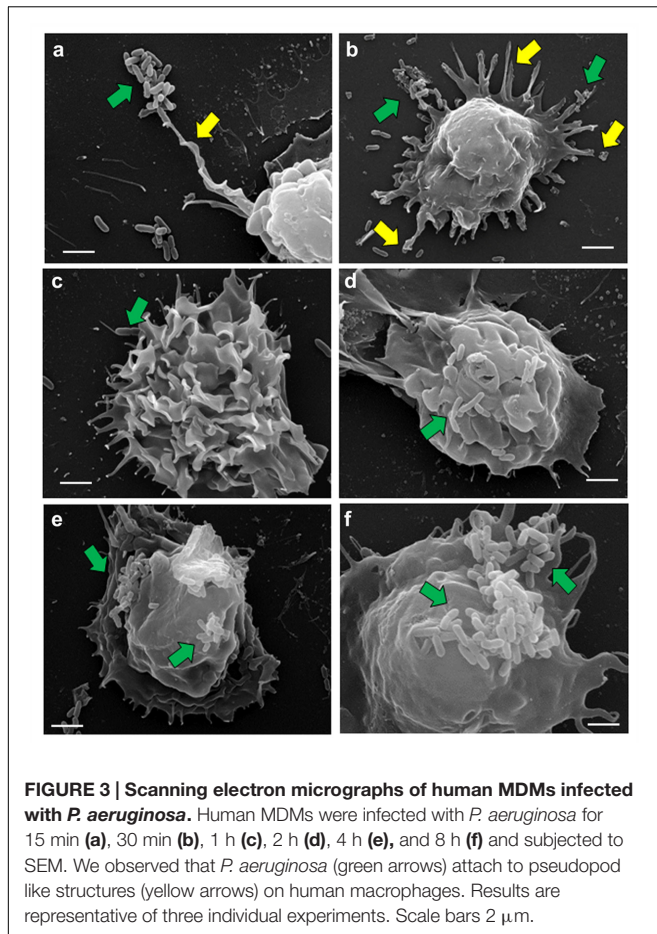
## Ultrastructural Examination of *P. aeruginosa* Infected Human MDMs and Mouse BMM $\phi$

To examine the interaction of *P. aeruginosa* with macrophages in detail, human MDMs and mouse BMM $\phi$  were subjected to SEM. During the first 15 min of post-infection, *P. aeruginosa* was observed to adhere to human MDMs through pseudopod like structures (**Figure 3a**). There was an increase in the formation of these pseudopod like structures at 30 min post-infection (**Figure 3b**). Bacteria were seen to be adhered to the human MDMs mostly in clusters. However, individually attached bacteria were also observed. By 1 h post-infection, few bacteria were demonstrable on the surface of human MDMs accompanied with membrane ruffling (**Figure 3c**). The number of bacteria on the surface of human MDMs increased with increase in post-infection time period (**Figures 3d,e**). A large number of bacteria were observed on the surface of macrophages by 8 h post-infection (**Figure 3f**). Similarly few bacteria were demonstrable on the surface of mouse BMM $\phi$  at 60 min post-infection that increased in number with increase in post-infection time period to 8 h. As observed with human MDMs, we also observed pseudopod formation and membrane ruffling in *P. aeruginosa* infected mouse BMM $\phi$  (Supplementary Figure S4).

Transmission electron microscopy (TEM) demonstrated that human MDMs form plasma membrane protrusions in response to *P. aeruginosa* infection that can act as bacterial adhesion sites (**Figure 4a**). The bacteria were found in the enclosed membrane protrusions by 30 min post-infection in human MDMs (**Figure 4b**). At 60 min post-infection, *P. aeruginosa* was internalized into human MDMs inside membrane bound vacuoles (**Figure 4c**). In some vacuoles, the membrane was



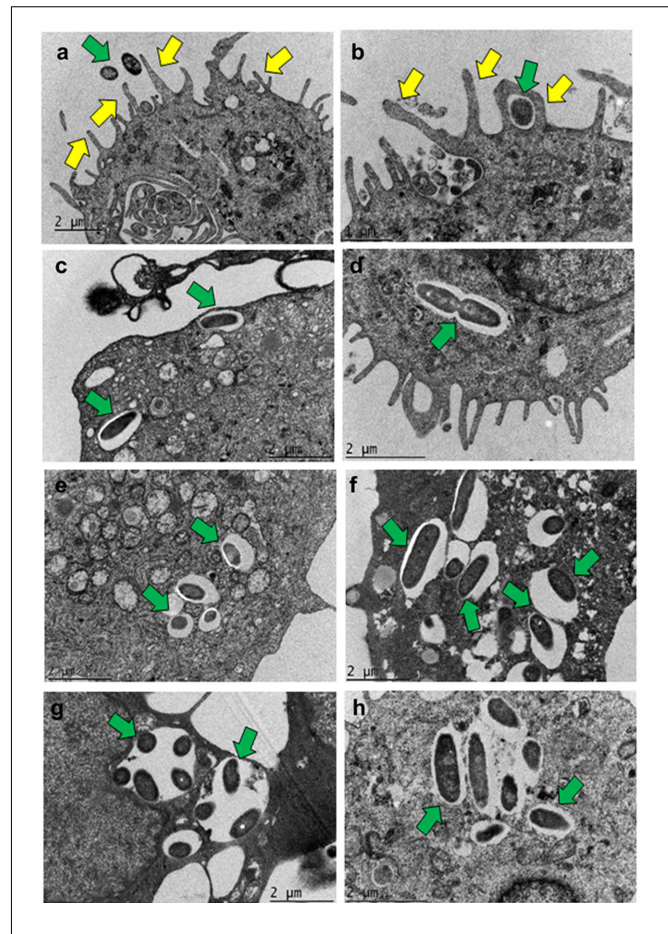
closely apposed to the bacteria whereas in others there was a space between bacteria and the membrane. In addition, actively dividing bacteria inside human MDMs were also observed (**Figure 4d**). There was increase in bacterial number inside human MDMs at 2 h post-infection (**Figure 4e**). At 4 h post-infection, the vacuoles containing bacteria increased in size (**Figure 4f**). At 8 h post-infection, there was clustering of bacteria inside human MDMs. In some vacuoles, multiple bacteria were demonstrable inside them (**Figure 4g**). At this post-infection time-period, *P. aeruginosa* disrupted the membrane and many free bacteria were observed in the cytoplasm of human MDMs (**Figure 4h**). Mouse BMM $\phi$  displayed similar phenotypic changes in response to otopathogenic *P. aeruginosa* infection (Supplementary Figure S5).



**FIGURE 3 | Scanning electron micrographs of human MDMs infected with *P. aeruginosa*.** Human MDMs were infected with *P. aeruginosa* for 15 min (a), 30 min (b), 1 h (c), 2 h (d), 4 h (e), and 8 h (f) and subjected to SEM. We observed that *P. aeruginosa* (green arrows) attach to pseudopod like structures (yellow arrows) on human macrophages. Results are representative of three individual experiments. Scale bars 2  $\mu$ m.

## Entry of Otopathogenic *P. aeruginosa* Is Dependent on Both Microfilament and Microtubule Associated Pathway

Host cytoskeleton can play a crucial role in bacterial cell invasion. Therefore, we determined whether invasion of macrophages by *P. aeruginosa* relies on microfilament and microtubule dependent pathways. Human MDMs and mouse BMM $\phi$  were infected with *P. aeruginosa* in the presence of increasing concentrations of cytochalasin D, an inhibitor of actin polymerization. There was a significant dose-dependent decrease in the invasion of human MDMs and mouse BMM $\phi$  in the presence of cytochalasin D compared to DMSO treated or untreated cells ( $P < 0.01$ ) (Figure 5a). A 30% decrease in invasion in the presence of 2  $\mu$ M cytochalasin D was observed whereas 90% decrease in invasion was observable at a concentration of 20  $\mu$ M in human MDMs (Figure 5a). Microtubule disrupting compounds, vinblastine, colchicine, and nocodazole also caused a dose-dependent decrease in the invasion of human MDMs by *P. aeruginosa* ( $P < 0.01$ ). Human MDMs pretreated with 10  $\mu$ M vinblastine showed 40% decrease in invasion whereas cells pretreated with 50  $\mu$ M demonstrated more than 90% decrease in invasion compared to DMSO treated or untreated macrophages (Figure 5b). Colchicine caused an 80% decrease in invasion at a concentration of 25  $\mu$ M, whereas a 95% decrease in invasion was

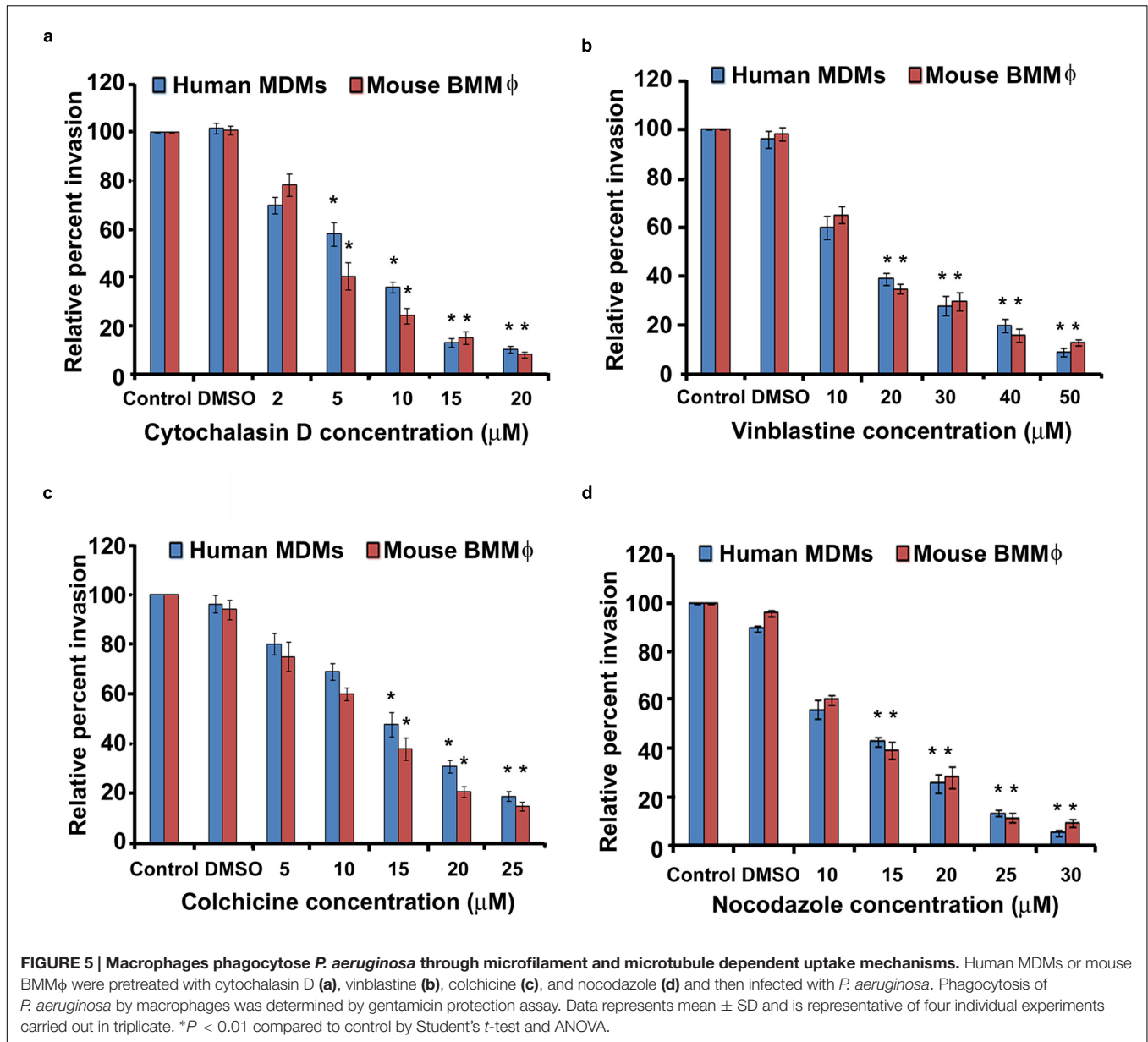


**FIGURE 4 | Transmission electron micrographs demonstrating phagocytosis of *P. aeruginosa* by macrophages.** Human MDMs were infected with *P. aeruginosa* for 15 min (a), 30 min (b), 1 h (c,d), 2 h (e), 4 h (f), and 8 h (g,h) and subjected to TEM. Bacteria were demonstrable inside membrane bound vacuoles in human MDMs which eventually were disrupted by 8 h post-infection. Yellow arrows indicate pseudopod like structures and green arrows indicate bacteria. Results are representative of three individual experiments. Scale bars (a,c-h) 2  $\mu$ m; (b) 1  $\mu$ m.

observed in the presence of 30  $\mu$ M nocodazole (Figures 5c,d). Similar significant decrease in invasion of mouse BMM $\phi$  was observed in the presence of cytochalasin D, vinblastine, colchicine, and nocodazole ( $P < 0.01$ ) (Figures 5a-d). We observed that there were no toxic effects of these reagents on bacteria or on cells at the tested concentrations (data not shown). These results with inhibitory compounds suggest that *P. aeruginosa* invades human MDMs and mouse BMM $\phi$  through both microfilament and microtubule dependent uptake mechanisms.

## *P. aeruginosa* Induces Actin Cytoskeleton Rearrangements during Invasion of Macrophages

Actin cytoskeleton rearrangement is a common strategy employed by pathogens to invade host cells (Yang et al., 2012; Navarro-Garcia et al., 2013; de Souza Santos and Orth, 2015;



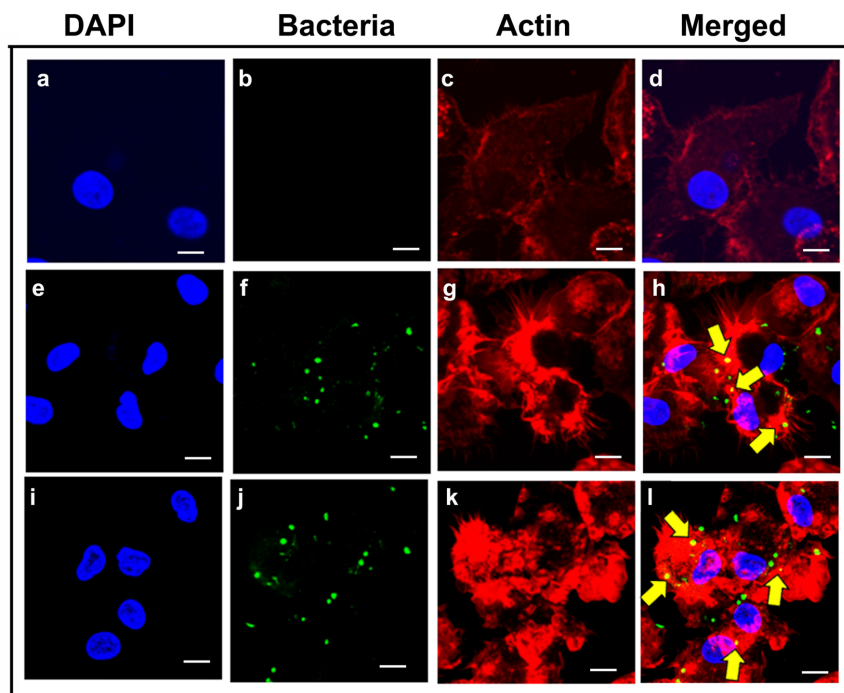
Zheng et al., 2015). To determine whether *P. aeruginosa* induces alterations to the cytoskeleton during invasion of human MDMs and mouse BMMφ, the distribution of F-actin in macrophages was examined. Human MDMs and mouse BMMφ were infected with *P. aeruginosa* and stained with rhodamine phalloidin to detect F-actin. Uninfected human MDMs showed spatial distribution of F-actin throughout the cell (Figures 6a–d). However, infected human MDMs showed actin condensation in response to otopathogenic *P. aeruginosa* infection (Figure 6). At 30-min post-infection, a lot of actin accumulation underneath the bacterial binding sites was observed (Figures 6e–h). There was a lot of interaction of bacteria with the actin filaments. At 60-min, there was further increase in actin accumulation that colocalized with the bacteria as indicated by the yellow color (Figures 6i–l). Similar pattern

of actin accumulation was observed in mouse BMMφ infected with otopathogenic *P. aeruginosa* (data not shown). Taken together, these findings suggest that *P. aeruginosa* induces actin cytoskeleton rearrangements that facilitate its entry inside macrophages.

### Bacterial OprF Expression Plays a Crucial Role in Invasion of Macrophages by *P. aeruginosa*

Bacterial OMPs play a crucial role in interaction of pathogens with host cells (Toma et al., 2014; Alzahrani et al., 2015; Bulir et al., 2015). OprF is the major OMP/porin of *P. aeruginosa* that has been demonstrated to facilitate biofilm formation under anaerobic conditions and adhesion to host cells (Azghani et al.,





**FIGURE 6 | *Pseudomonas aeruginosa* induces actin cytoskeletal rearrangements during invasion of macrophages.** Human MDMs were infected with *P. aeruginosa* for 30 min (e–h) or 60 min (i–l) or left uninfected (a–d) and then stained with anti-*P. aeruginosa* antibody followed by Alexa Fluor 488 (green). Cells were counterstained with rhodamine phalloidin to visualize actin (red) and DAPI for cell nuclei (blue). Results are representative of three individual experiments. Scale bars 10  $\mu$ m.

2002; Yoon et al., 2002). Therefore, we examined whether OprF play a role in the invasion of macrophages by *P. aeruginosa*. Both human and mouse macrophages were infected with wild-type (WT),  $\Delta oprF$  and *trans*-complemented (pOprF) strains of *P. aeruginosa*. At 2 h post-infection, there was no significant difference ( $P > 0.05$ ) in the phagocytosis of  $\Delta oprF$  mutant strain of *P. aeruginosa* compared to WT or pOprF strains (Figures 7a,b). However, the number of  $\Delta oprF$  bacterial mutant decreased significantly inside both human MDMs and mouse BMM $\phi$  at 4 h post-infection ( $P < 0.01$ ). At 6 h post-infection, no viable  $\Delta oprF$  bacteria were recoverable from human MDMs and very low number of bacteria from mouse BMM $\phi$ . In contrast, high numbers of bacteria were recoverable from WT or pOprF infected human MDMs and mouse BMM $\phi$ .

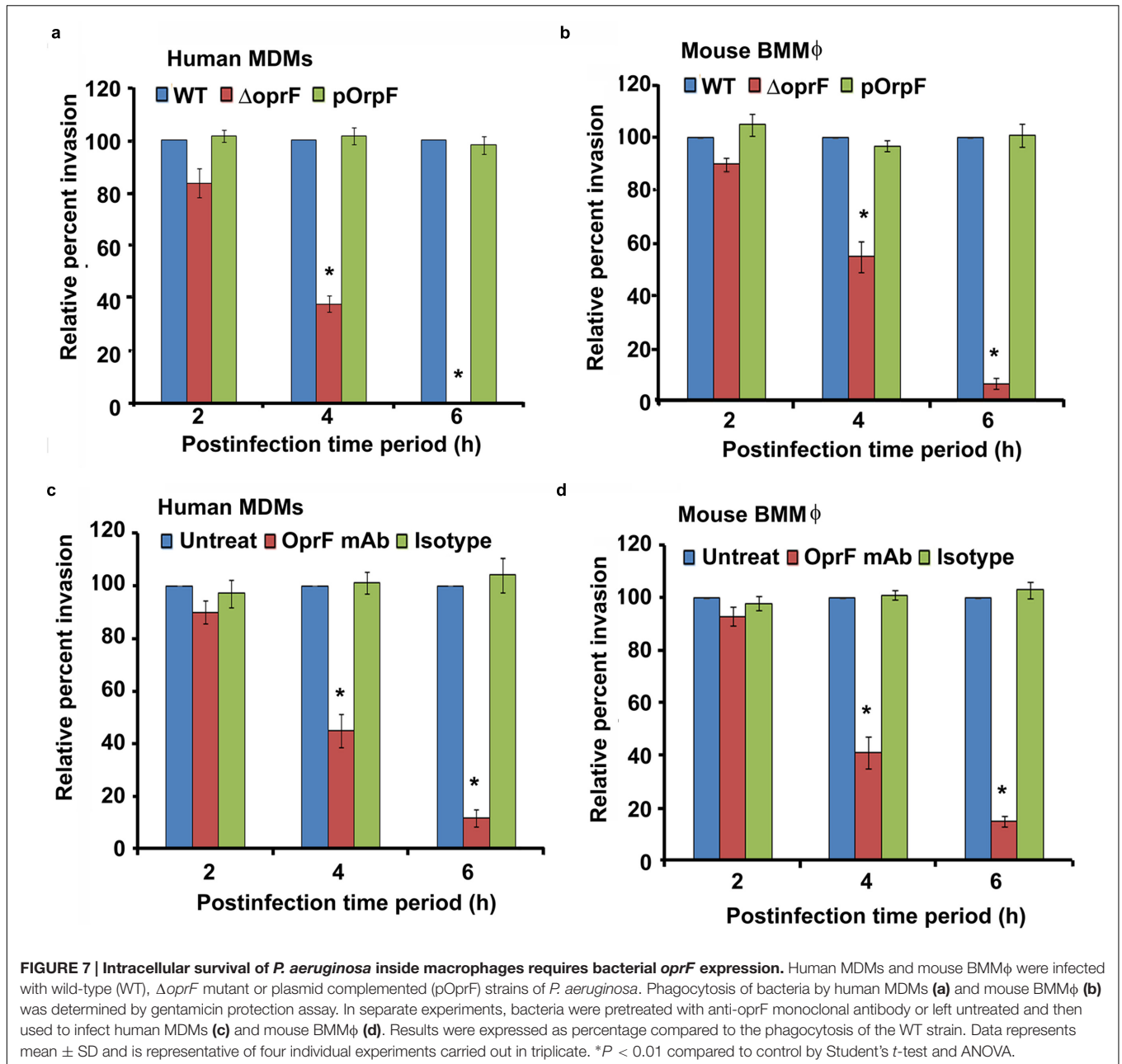
To further confirm the role of OprF in invasion of macrophages by *P. aeruginosa*, WT bacteria were pretreated with anti-OprF monoclonal antibody or isotype control or left untreated and then used to infect human MDMs and mouse BMM $\phi$ . Pretreatment of bacteria with anti-OprF monoclonal antibody significantly decreased the number of bacteria recoverable from human MDMs at 4 and 6 h post-infection compared to isotype control treated or untreated bacteria ( $P < 0.01$ ) (Figure 7c). Similar decrease in number of intracellular *P. aeruginosa* was observed at 4 and 6 h post-infection when pretreated bacteria were used to infect mouse BMM $\phi$  (Figure 7d). These results suggest that OprF plays a critical role in the survival of *P. aeruginosa* inside macrophages.

## Otopathogenic *P. aeruginosa* Exerts Cytopathic Effect on Macrophages

To determine whether infection of macrophages with *P. aeruginosa* causes cell death. Human MDMs and mouse BMM $\phi$  were infected with *P. aeruginosa* at an MOI of 10 and the levels of LDH released were determined in the cell culture supernatants. LDH release is the most acceptable and reliable marker to determine cell viability<sup>34–36</sup>. There was not much cell damage up to 8 h post-infection as demonstrated by minimal LDH release in cell culture supernatants of both human MDMs and mouse BMM $\phi$  infected with WT otopathogenic *P. aeruginosa* (Figures 8a,b). However, a further increase in time resulted in significant cell death ( $P < 0.01$ ). LDH levels increased from 12.5% at 10 h post-infection to 46.7% by 16 h post-infection in culture supernatants of infected human MDMs. Similarly, LDH levels increased from 15.7% at 8 h post-infection to 39.8% at 16 h post-infection in mouse BMM $\phi$ . At 24 h post-infection, there was even a higher level of cell death, as indicated by high LDH levels in human MDMs and mouse BMM $\phi$ . Interestingly, deletion of *oprF* abrogated the ability of otopathogenic to induce significant cell death in macrophages ( $P < 0.01$ ). However, complementation with the pOprF plasmid restored the ability of mutant strain to exert cytopathic effects on human MDMs and mouse BMM $\phi$ .

To further confirm that macrophages undergo apoptosis, infected human MDMs and mouse BMM $\phi$  were stained with



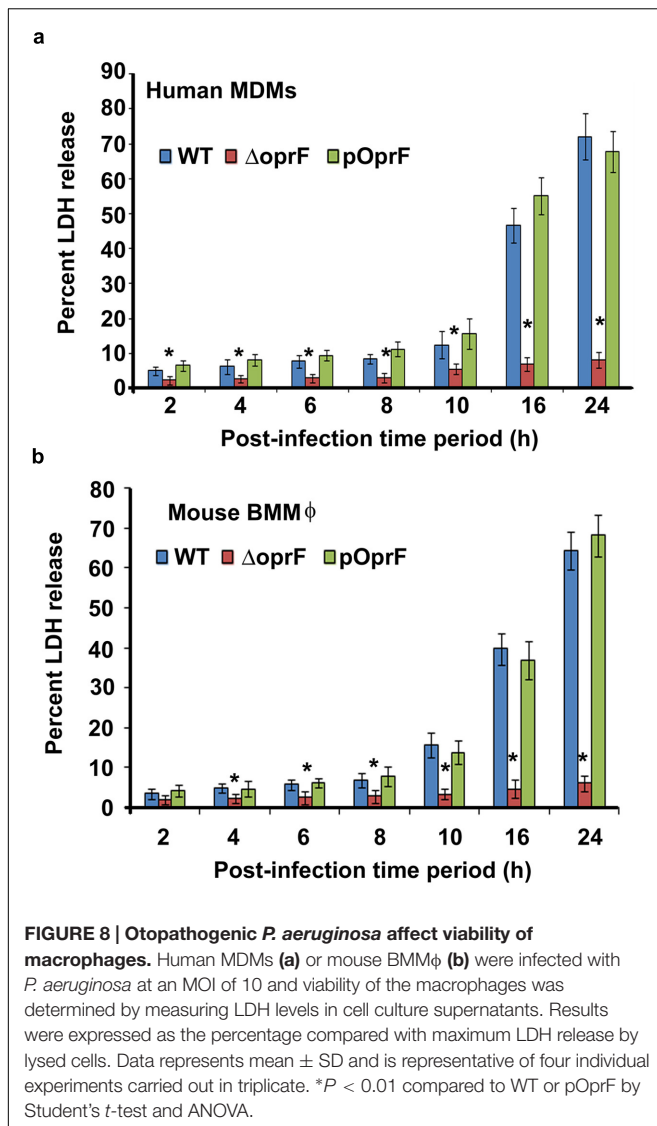


ethidium homodimer-1, a high affinity, membrane-impermeant dye that exclusively stains the DNA of dead cells (Eidet et al., 2015; McCanna et al., 2015; Yoeruek et al., 2016). In agreement with the LDH assay results, at 8 h post-infection very little ethidium homodimer-1 staining of infected human MDMs was observed ( $P > 0.05$ ) (Supplementary Figure S6). However, 25% of human MDMs were stained with membrane-impermeant dye at 10 h post-infection. At 16 h post-infection, 50% of infected MDMs failed to exclude the dye. By 24 h post-infection, almost 75% of human MDMs had been stained with ethidium homodimer-1 suggesting considerable cell death. Similar results were obtained with mouse BMM $\phi$  demonstrating extensive cell death at 24 h post-infection (Supplementary Figure S6). On par

with our LDH data, human MDMs and mouse BMM $\phi$  infected with  $\Delta oprF$  mutant strain did not demonstrate significant ethidium homodimer-1 staining even at 24 h post-infection compared to WT infected cells ( $P < 0.01$ ). This phenotype was restored upon complementation with pOprF. These results suggest that otopathogenic *P. aeruginosa* exerts cytopathic effects on macrophages for which bacterial OprF expression is necessary.

## DISCUSSION

Despite advances in medical therapy, CSOM is still a clinically challenging disease. Antibiotics are the only available



treatment modalities against CSOM at present but these have moderate efficacy against the disease, and at times are not effective at all. The antibiotics used to treat CSOM include neomycin, ciprofloxacin, cefepime, carbapenem, levofloxacin, and ceftazidime (Saunders J. et al., 2011; Mittal et al., 2015). However, *P. aeruginosa* has been demonstrated to be resistant to a wide variety of antibiotics including  $\beta$  lactams (penicillins, cephalosporins, and carbapenems), fluoroquinolones (ciprofloxacin), polymyxins and macrolides (erythromycin and azithromycin) (Nordmann and Guibert, 1998; Livermore, 2002; Walsh et al., 2003; Jang and Park, 2004; Poole, 2004, 2011; Saunders J. et al., 2011; Morita et al., 2014; Mittal et al., 2015). *P. aeruginosa* exhibits some degree of sensitivity to aminoglycosides but this class of antibiotics has significant ototoxicity and is not recommended for the treatment of CSOM (Black et al., 2004; Jing et al., 2015; Koo et al., 2015; Leis et al., 2015). A better knowledge of the interaction of pathogens with immune cells will provide new opportunities to design

effective novel therapeutic strategies against CSOM. Although immune cells play an important role in clearance of infection, the interaction of otopathogenic *P. aeruginosa* with macrophages has never been investigated. The results of the present study contribute to our understanding of the interaction between otopathogenic *P. aeruginosa* and primary macrophages.

Macrophages form an important line of host defense in innate immune system against infections (Aderem, 2003; Tam and Aderem, 2014; Zhang and Wang, 2014; Divangahi et al., 2015; Hume, 2015; Schultze et al., 2015). Some studies employ macrophage cell lines to understand the interaction of pathogens with immune cells that may not mimic the true characteristics of primary cells. These cell lines are fundamentally different from the primary cells in that they grow continuously in culture due to permanent alterations in their genes. Such changes could have an effect on the signaling cascades that are activated following interaction of immune cells with pathogens. The results of studies utilizing primary cells have been instrumental in developing our understanding regarding immune cell response to infection. Therefore, in the present study primary human MDMs and mouse BMMφ have been used to investigate the interaction between otopathogenic *P. aeruginosa* and macrophages. This study for the first time demonstrated that otopathogenic *P. aeruginosa* enters and survives inside primary human MDMs and mouse BMMφ in a dose and time dependent manner in context of ear infections. We also observed that serum opsonization has no significant effect on invasion of macrophages by *P. aeruginosa*. Since opsonization of pathogens by serum components facilitate phagocytosis through Fc gamma receptors on macrophages, these results suggest that otopathogenic *P. aeruginosa* employs unique mechanisms to enter inside macrophages. SEM demonstrated that otopathogenic *P. aeruginosa* adheres to the primary macrophages through the formation of pseudopod like structures. TEM confirmed the internalization of bacteria inside human MDMs and mouse BMMφ. We also observed that survival of otopathogenic *P. aeruginosa* inside depends on the expression of OprF, the most abundant bacterial OMP/porin. On par with these findings, pretreatment of bacteria with anti-OprF monoclonal antibody significantly decreased the invasion of macrophages by *P. aeruginosa*, highlighting the crucial role of OprF in cell invasion. The ability of otopathogenic *P. aeruginosa* to survive inside macrophages provides protection against complement, lysozyme activity and other host immune defenses. This enables *P. aeruginosa* to evade killing and hence may constitute an important virulence trait.

Macrophages are a preferred niche for certain pathogens as they are highly phagocytic and long lived, providing protection for a prolonged period. Pathogens including *Candida glabrata*, *Enterococcus faecalis*, *Brucella* sp., *Mycobacterium tuberculosis*, *Escherichia coli* and Group B streptococci, have also been demonstrated to enter and survive inside macrophages, which has been correlated with their ability to cause infection (Valentin-Weigand et al., 1996; Cornacchione et al., 1998; Pieters and Gatfield, 2002; Celli, 2006; Miramón et al., 2013; Miskinyte and Gordo, 2013; Elliott et al., 2015;

Kasper et al., 2015; Sabatino et al., 2015). Other pathogens such as *Yersinia* spp. avoid uptake and phagocytosis preventing activation of macrophages thus avoiding potent host immune responses (Fällman et al., 2002). It has been demonstrated that tyrosine phosphorylation plays a crucial role in phagocytosis and subsequent activation of professional phagocytes (Park et al., 2011). However, pathogens produce effector proteins to neutralize tyrosine phosphorylation that promotes inhibition of phagocytosis and activation of macrophages. The effector protein, YopH, of *Yersinia* spp. possess tyrosine phosphatase activity thus counteracting the activating tyrosine phosphorylation signals of the host cell (Yuan et al., 2005). This protein is delivered into host cells through bacterial type III secretion system (T3SS) and prevents *Yersinia* internalization by macrophages by dephosphorylating the adaptor protein p130Cas, among other targets (Andersson et al., 1996). *Salmonella typhimurium* secretes the tyrosine phosphatase SptP, which is also injected into host cells through a T3SS (Kaniga et al., 1996). SptP deactivates Rho-family GTPases and subsequently abrogates activation of macrophages. In addition, in case of adherent *S. aureus*, it has been demonstrated that surface of biomaterial plays a crucial role in bacterial phagocytosis by macrophages (Domingues et al., 2015). *S. aureus* adhered to hydrophilic surfaces had a lowest rate of phagocytosis while bacteria adhered to common biomaterials such as silicone rubber, tissue culture polystyrene and stainless steel has intermediate rate of phagocytosis by J774A macrophage cell line. It was concluded that hydrophobicity is a necessary surface condition for effective phagocytosis of *S. aureus* by J774A macrophage cell line. Our previous studies have demonstrated that *P. aeruginosa* can invade human middle ear epithelial cells (HMEECs) (Mittal et al., 2014). However, the interaction of otopathogenic *P. aeruginosa* with primary macrophages has never been explored in previous studies.

Pathogens including *Shigella dysenteriae* utilize cytoskeletal rearrangement in order to gain entry inside host cells (Rottner et al., 2005). However, each pathogen utilizes unique mechanism to invade immune cells. We observed that internalization of *P. aeruginosa* inside human MDM and mouse BMM $\phi$  relies on both microfilament and microtubule dependent uptake mechanisms. Pretreatment of human MDMs and mouse BMM $\phi$  with actin polymerization inhibitors or microtubule-destabilizing agents led to a significant decrease in invasion of macrophages by *P. aeruginosa* in a dose-dependent manner. Some pathogens utilize only microfilaments whereas others employ microfilaments to gain entry inside host cells that are also cell type specific (Oelschlaeger et al., 1993; Kopecko et al., 2001; Mazon Moya et al., 2014; Valencia-Gallardo et al., 2015). However, the entry of other pathogens requires both microfilament and microtubule dependent uptake mechanisms (Ferrero et al., 2009; Taylor et al., 2010) as observed for otopathogenic *P. aeruginosa* in the present study.

Pathogens employ various strategies in order to survive inside the host and cause infection. Some pathogens trigger anti-apoptotic mechanisms to prevent host cell death. Pathogens

including *Enterococcus faecalis*, *Toxoplasma gondii*, *Brucella* sp., *Neisseria meningitidis*, and *Neisseria gonorrhoeae* inhibit apoptosis of host cells, providing a niche where they can survive and replicate (Beck and Meyer, 2000; Tunbridge et al., 2006; Cai et al., 2014; Cui et al., 2014; Zou and Shankar, 2014). On the contrary, other microbes including *Mycobacterium tuberculosis*, *Legionella pneumophila*, *Bordetella pertussis*, *Listeria monocytogenes*, *Corynebacterium diphtheriae*, *Shigella flexneri*, and *Salmonella typhimurium*, induces cell death that allow the pathogens to efficiently exit the host cell, spread to neighboring cells, evade immune cells, and/or to gain nutrients (Haimovich and Venkatesan, 2006; Hewlett et al., 2006; Cervantes et al., 2008; dos Santos et al., 2010; Morinaga et al., 2010; Welin et al., 2011; Ashida et al., 2014; Behnsen et al., 2015). Thus, knowledge of the mechanisms employed by pathogens in the progression of disease is critical to have a better understanding of virulence and host defense. In this study, we observed that otopathogenic *P. aeruginosa* induces death of human MDMs and mouse BMM $\phi$  as determined by LDH release in the cell culture supernatants and ethidium homodimer-I staining. LDH is the most acceptable and reliable marker for determining host cell death (Kwon et al., 2015; Park et al., 2015; Lv et al., 2016). Ethidium homodimer-I is a fluorescent nuclear stain that penetrates dead cells due to disrupted plasma membrane and increases intensity after binding to DNA (Eidet et al., 2015; McCanna et al., 2015; Yoeruek et al., 2016). The ability of otopathogenic *P. aeruginosa* to induce cell death in macrophages enables this pathogen to escape potent host defenses and will enable it to cause infection.

In summary, the results presented here demonstrate for the first time that otopathogenic *P. aeruginosa* are able to enter and survive inside macrophages in context of ear infections. Studies are in progress in our laboratory to elucidate the molecular mechanisms through which otopathogenic *P. aeruginosa* escape from macrophage killing. The uptake of otopathogenic *P. aeruginosa* by human MDMs and mouse BMM $\phi$  relies on actin polymerization and microtubule dependent process. Bacterial OprF expression plays a crucial role in the intracellular survival of *P. aeruginosa* inside human MDMs and mouse BMM $\phi$ . Future studies comparing the level of *oprF* gene expression between strains isolated from CSOM patients and the other diseases such as pneumonia or urinary infection will help in confirming the role of bacterial *oprF* for the establishment of CSOM. In addition, it has been demonstrated that pathogens form biofilms on middle ear during CSOM (Saunders J.E. et al., 2011; Kaya et al., 2013; Gu et al., 2014). Therefore, future investigations are warranted to determine the interaction of biofilm cells of otopathogenic *P. aeruginosa* with primary macrophages. Our findings suggest that otopathogenic *P. aeruginosa* is recognized by phagocytic cells but remain impermeable to attacks by their antimicrobial components and is able to exert cytotoxic effects on macrophages. Further studies employing mouse model of CSOM are warranted to delineate the role of macrophages in the disease process. Understanding host-pathogen interactions will provide novel avenues to design effective treatment modalities



against CSOM, and hence, prevent consequent hearing loss as well as life-threatening CNS complications.

## AUTHOR CONTRIBUTIONS

RM, CL, HK, MG, CJ, and PB performed the experiments. RM, KM, MG, and PB wrote the manuscript. RM, KM, PW, CJ, DY, and XL designed and supervised the study. All authors approved the final version of the manuscript.

## FUNDING

The research work in Dr. XL's laboratory is supported by grants R01 DC05575, R01 DC01246, and R01 DC012115 from the National Institutes of Health/National Institute on Deafness and Other Communication Disorders.

## REFERENCES

- Aderem, A. (2003). Phagocytosis and the inflammatory response. *J. Infect. Dis.* 187(Suppl. 2), S340–S345. doi: 10.1086/374747
- Afolabi, O. A., Salaudeen, A. G., Ologe, F. E., Nwabuisi, C., and Nwawolo, C. C. (2012). Pattern of bacterial isolates in the middle ear discharge of patients with chronic suppurative otitis media in a tertiary hospital in North central Nigeria. *Afr. Health Sci.* 12, 362–367.
- Alberts, B., Johnson, A., Lewis, J., Raff, M., Roberts, K., and Walter, P. (2002). *Molecular Biology of the Cell*, 4th Edn. New York, NY: Garland Science.
- Alzahrani, H., Winter, J., Boocock, D., De Girolamo, L., and Forsythe, S. J. (2015). Characterization of outer membrane vesicles from a neonatal meningitic strain of *Cronobacter sakazakii*. *FEMS Microbiol. Lett.* 362:fnv085. doi: 10.1093/femsle/fnv085
- Andersson, K., Carballeira, N., Magnusson, K. E., Persson, C., Stendahl, O., Wolf-Watz, H., et al. (1996). YopH of *Yersinia pseudotuberculosis* interrupts early phosphotyrosine signalling associated with phagocytosis. *Mol. Microbiol.* 20, 1057–1069. doi: 10.1111/j.1365-2958.1996.tb02546.x
- Ashida, H., Kim, M., and Sasakawa, C. (2014). Manipulation of the host cell death pathway by *Shigella*. *Cell. Microbiol.* 16, 1757–1766. doi: 10.1111/cmi.12367
- Atkinson, H., Wallis, S., and Coatesworth, A. P. (2015). Acute otitis media. *Postgrad. Med.* 127, 386–390. doi: 10.1080/00325481.2015.1028872
- Azghani, A. O., Idell, S., Bains, M., and Hancock, R. E. (2002). *Pseudomonas aeruginosa* outer membrane protein F is an adhesin in bacterial binding to lung epithelial cells in culture. *Microb. Pathog.* 33, 109–114. doi: 10.1006/mpat.2002.0514
- Balasubramanian, D., Schnepfer, L., Merighi, M., Smith, R., Narasimhan, G., Lory, S., et al. (2012). The regulatory repertoire of *Pseudomonas aeruginosa* AmpC  $\beta$ -lactamase regulator AmpR includes virulence genes. *PLoS ONE* 7:e34067. doi: 10.1371/journal.pone.0034067
- Beck, S. C., and Meyer, T. F. (2000). IgA1 protease from *Neisseria gonorrhoeae* inhibits TNF $\alpha$ -mediated apoptosis of human monocytic cells. *FEBS Lett.* 472, 287–292. doi: 10.1016/S0014-5793(00)01478-2
- Behnsen, J., Perez-Lopez, A., Nuccio, S. P., and Raffatellu, M. (2015). Exploiting host immunity: the *Salmonella* paradigm. *Trends Immunol.* 36, 112–120. doi: 10.1016/j.it.2014.12.003
- Black, F. O., Pesznecker, S., and Stallings, V. (2004). Permanent gentamicin vestibulotoxicity. *Otol. Neurotol.* 25, 559–569. doi: 10.1097/00129492-200407000-00025
- Bluestone, C. D. (1998). Epidemiology and pathogenesis of chronic suppurative otitis media: implications for prevention and treatment. *Int. J. Pediatr. Otorhinolaryngol.* 42, 207–223. doi: 10.1016/S0165-5876(97)00147-X
- Bouffartigues, E., Gicquel, G., Bazire, A., Bains, M., Maillot, O., Vieillard, J., et al. (2012). Transcription of the oprF gene of *Pseudomonas aeruginosa* is dependent

## ACKNOWLEDGMENTS

We are grateful to Dr. R. E. W. Hancock for kindly providing anti-OprF monoclonal antibody. We are grateful to April Mann for critical reading of the manuscript. We are thankful to Electron Microscopy Core Facility at Miller School of Medicine, University of Miami for assisting in electron microscopy experiments. We are also thankful to Dr. Marcia Boulina, University of Miami Analytical Imaging Core Facility, for help in confocal microscopy experiments.

## SUPPLEMENTARY MATERIAL

The Supplementary Material for this article can be found online at: <http://journal.frontiersin.org/article/10.3389/fmicb.2016.01828/full#supplementary-material>

- mainly on the SigX sigma factor and is sucrose induced. *J. Bacteriol.* 194, 4301–4311. doi: 10.1128/JB.00509-12
- Bulir, D. C., Waltho, D. A., Stone, C. B., Liang, S., Chiang, C. K., Mwawasi, K. A., et al. (2015). Chlamydia Outer Protein (Cop) B from *Chlamydia pneumoniae* possesses characteristic features of a type III secretion (T3S) translocator protein. *BMC Microbiol.* 15:163. doi: 10.1186/s12866-015-0498-1
- Cai, Y., Chen, H., Mo, X., Tang, Y., Xu, X., Zhang, A., et al. (2014). *Toxoplasma gondii* inhibits apoptosis via a novel STAT3-miR-17-92-Bim pathway in macrophages. *Cell. Signal.* 26, 1204–1212. doi: 10.1016/j.cellsig.2014.02.013
- Celli, J. (2006). Surviving inside a macrophage: the many ways of *Brucella*. *Res. Microbiol.* 157, 93–98. doi: 10.1016/j.resmic.2005.10.002
- Cervantes, J., Nagata, T., Uchijima, M., Shibata, K., and Koide, Y. (2008). Intracytosolic *Listeria monocytogenes* induces cell death through caspase-1 activation in murine macrophages. *Cell. Microbiol.* 10, 41–52.
- Chew, Y. K., Cheong, J. P., Khir, A., Brito-Mutunayagam, S., and Prepageran, N. (2012). Complications of chronic suppurative otitis media: a left otogenic brain abscess and a right mastoid fistula. *Ear Nose Throat J.* 91, 428–430.
- Clarke, T. B. (2014). Microbial programming of systemic innate immunity and resistance to infection. *PLoS Pathog.* 10:e1004506. doi: 10.1371/journal.ppat.1004506
- Confer, A. W., and Ayalew, S. (2013). The OmpA family of proteins: roles in bacterial pathogenesis and immunity. *Vet. Microbiol.* 163, 207–222. doi: 10.1016/j.vetmic.2012.08.019
- Cornacchione, P., Scaringi, L., Fettucciari, K., Rosati, E., Sabatini, R., Orefici, G., et al. (1998). Group B streptococci persist inside macrophages. *Immunology* 93, 86–95. doi: 10.1046/j.1365-2567.1998.00402.x
- Cui, G., Wei, P., Zhao, Y., Guan, Z., Yang, L., Sun, W., et al. (2014). *Brucella* infection inhibits macrophages apoptosis via Nedd4-dependent degradation of calpain2. *Vet. Microbiol.* 174, 195–205. doi: 10.1016/j.vetmic.2014.08.033
- Cunningham, M., Guardiani, E., Kim, H. J., and Brook, I. (2012). Otitis media. *Future Microbiol.* 7, 733–753. doi: 10.2217/fmb.12.38
- Daha, M. R. (2010). Role of complement in innate immunity and infections. *Crit. Rev. Immunol.* 30, 47–52. doi: 10.1615/CritRevImmunol.v30.i1.30
- Dayasena, R., Dayasiri, M., Jayasuriya, C., and Perera, D. (2011). Aetiological agents in chronic suppurative otitis media in Sri Lanka. *Australas. Med. J.* 4, 101–104. doi: 10.4066/AMJ.2011.549
- de Souza Santos, M., and Orth, K. (2015). Subversion of the cytoskeleton by intracellular bacteria: lessons from *Listeria*, *Salmonella* and *Vibrio*. *Cell. Microbiol.* 17, 164–173. doi: 10.1111/cmi.12399
- Divangahi, M., King, I. L., and Pernet, E. (2015). Alveolar macrophages and type I IFN in airway homeostasis and immunity. *Trends Immunol.* 36, 307–314. doi: 10.1016/j.it.2015.03.005
- Domingues, J. F., Roest, S., Wang, Y., van der Mei, H. C., Libera, M., van Kooten, T. G., et al. (2015). Macrophage phagocytic activity toward adhering

- staphylococci on cationic and patterned hydrogel coatings versus common biomaterials. *Acta Biomater.* 18, 1–8. doi: 10.1016/j.actbio.2015.02.028
- dos Santos, C. S., dos Santos, L. S., de Souza, M. C., dos Santos, Dourado, F., de Oliveira Dias, A. A., et al. (2010). Non-opsonic phagocytosis of homologous non-toxicogenic and toxicogenic *Corynebacterium diphtheriae* strains by human U-937 macrophages. *Microbiol. Immunol.* 54, 1–10. doi: 10.1111/j.1348-0421.2009.00179.x
- Eidet, J. R., Utheim, Ø. A., Islam, R., Lyberg, T., Messelt, E. B., Dartt, D. A., et al. (2015). The impact of storage temperature on the morphology, viability, cell number and metabolism of cultured human conjunctival epithelium. *Curr. Eye Res.* 40, 30–39. doi: 10.3109/02713683.2014.909497
- Eklund, D., Welin, A., Schön, T., Stendahl, O., Huygen, K., and Lerm, M. (2010). Validation of a medium-throughput method for evaluation of intracellular growth of *Mycobacterium tuberculosis*. *Clin. Vaccine Immunol.* 17, 513–517. doi: 10.1128/CVI.00446-09
- Elliott, T. R., Elliott, T. R., Hudspith, B. N., Rayment, N. B., Prescott, N. J., Petrovska, L., et al. (2015). Defective macrophage handling of *Escherichia coli* in Crohn's disease. *J. Gastroenterol. Hepatol.* 30, 1265–1274. doi: 10.1111/jgh.12955
- Fällman, M., Deleuil, F., and McGee, K. (2002). Resistance to phagocytosis by *Yersinia*. *Int. J. Med. Microbiol.* 291, 501–509. doi: 10.1078/1438-4221-00159
- Ferrero, M. C., Fossati, C. A., and Baldi, P. C. (2009). Smooth *Brucella* strains invade and replicate in human lung epithelial cells without inducing cell death. *Microbes Infect.* 11, 476–483. doi: 10.1016/j.micinf.2009.01.010
- Finnen, R. L., Martin, N. L., Siehnel, R. J., Woodruff, W. A., Rosok, M., and Hancock, R. E. (1992). Analysis of the *Pseudomonas aeruginosa* major outer membrane protein OprF by use of truncated OprF derivatives and monoclonal antibodies. *J. Bacteriol.* 174, 4977–4985.
- Forbes, B. A., Sahm, D. F., and Weissfeld, A. S. (1998). *Bailey and Scott's Diagnostic Microbiology*, 10th Edn. St. Louis, MO: Mosby Inc.
- Godek, M. L., Sampson, J. A., Duchsherer, N. L., McElwee, Q., and Grainger, D. W. (2006). Rho GTPase protein expression and activation in murine monocytes/macrophages is not modulated by model biomaterial surfaces in serum-containing in vitro cultures. *J. Biomater. Sci. Polym. Ed.* 17, 1141–1158. doi: 10.1163/156856206778530731
- Gu, X., Keyoumu, Y., Long, L., and Zhang, H. (2014). Detection of bacterial biofilms in different types of chronic otitis media. *Eur. Arch. Otorhinolaryngol.* 271, 2877–2883. doi: 10.1007/s00405-013-2766-8
- Haimovich, B., and Venkatesan, M. M. (2006). *Shigella* and *Salmonella*: death as a means of survival. *Microbes Infect.* 8, 568–577. doi: 10.1016/j.micinf.2005.08.002
- Hewlett, E. L., Donato, G. M., and Gray, M. C. (2006). Macrophage cytotoxicity produced by adenylate cyclase toxin from *Bordetella pertussis*: more than just making cyclic AMP! *Mol. Microbiol.* 59, 447–459.
- Horton, R. M., Cai, Z. L., Ho, S. N., and Pease, L. R. (1990). Gene splicing by overlap extension: tailor-made genes using the polymerase chain reaction. *Biotechniques* 8, 528–535.
- Hume, D. A. (2015). The many alternative faces of macrophage activation. *Front. Immunol.* 6:370. doi: 10.3389/fimmu.2015.00370
- Jang, C. H., and Park, S. Y. (2004). Emergence of ciprofloxacin-resistant *Pseudomonas* in chronic suppurative otitis media. *Otolaryngol. Allied Sci.* 29, 321–323. doi: 10.1111/j.1365-2273.2004.00835.x
- Jing, W., Zongjie, H., Denggang, F., Na, H., Bin, Z., Aifen, Z., et al. (2015). Mitochondrial mutations associated with aminoglycoside ototoxicity and hearing loss susceptibility identified by meta-analysis. *J. Med. Genet.* 52, 95–103. doi: 10.1136/jmedgenet-2014-102753
- Kaniga, K., Uralil, J., Bliska, J. B., and Galán, J. E. (1996). A secreted protein tyrosine phosphatase with modular effector domains in the bacterial pathogen *Salmonella typhimurium*. *Mol. Microbiol.* 21, 633–641. doi: 10.1111/j.1365-2958.1996.tb02571.x
- Kasper, L., Seider, K., and Hube, B. (2015). Intracellular survival of *Candida glabrata* in macrophages: immune evasion and persistence. *FEMS Yeast Res.* 15:fov042. doi: 10.1093/femsyr/fov042
- Kaya, E., Dag, I., Incesulu, A., Gurbuz, M. K., Acar, M., and Birdane, L. (2013). Investigation of the presence of biofilms in chronic suppurative otitis media, nonsuppurative otitis media, and chronic otitis media with cholesteatoma by scanning electron microscopy. *Sci. World J.* 2013:638715. doi: 10.1155/2013/638715
- Koo, J. W., Quintanilla-Dieck, L., Jiang, M., Liu, J., Urdang, Z. D., Allensworth, J. J., et al. (2015). Endotoxemia-mediated inflammation potentiates aminoglycoside-induced ototoxicity. *Sci. Transl. Med.* 7:298ra118. doi: 10.1126/scitranslmed.aac5546
- Kopecko, D. J., Hu, L., and Zaal, K. J. (2001). *Campylobacter jejuni*-microtubule-dependent invasion. *Trends Microbiol.* 9, 389–396. doi: 10.1016/S0966-842X(01)02107-2
- Kwon, S. H., Ma, S. X., Hwang, J. Y., Lee, S. Y., and Jang, C. G. (2015). Involvement of the Nrf2/HO-1 signaling pathway in sulfuretin-induced protection against amyloid beta 25-35 neurotoxicity. *Neuroscience* 304, 14–28. doi: 10.1016/j.neuroscience.2015.07.030
- Leis, J. A., Rutka, J. A., and Gold, W. L. (2015). Aminoglycoside-induced ototoxicity. *CMAJ* 187, E52. doi: 10.1503/cmaj.140339
- Livermore, D. M. (2002). Multiple mechanisms of antimicrobial resistance in *Pseudomonas aeruginosa*: our worst nightmare? *Clin. Infect. Dis.* 34, 634–640. doi: 10.1086/338782
- Lv, J. M., Guo, X. M., Chen, B., Lei, Q., Pan, Y. J., and Yang, Q. (2016). The noncompetitive AMPAR antagonist perampnel abrogates brain endothelial cell permeability in response to ischemia: involvement of claudin-5. *Cell. Mol. Neurobiol.* 36, 745–753. doi: 10.1007/s10571-015-0257-8
- MacFaddin, J. (1976). *Biochemical Tests for Identification of Medical Bacteria*, 3rd Edn. Philadelphia, PA: Lippincott Williams and Wilkins.
- Madana, J., Yolmo, D., Kalaiarasi, R., Gopalakrishnan, S., and Sujatha, S. (2011). Microbiological profile with antibiotic sensitivity pattern of cholesteatomatous chronic suppurative otitis media among children. *Int. J. Pediatr. Otorhinolaryngol.* 75, 1104–1108. doi: 10.1016/j.ijporl.2011.05.025
- Mazon Moya, M. J., Colucci-Guyon, E., and Mostowy, S. (2014). Use of *Shigella flexneri* to study autophagy-cytoskeleton interactions. *J. Vis. Exp.* 91:e51601. doi: 10.3791/51601
- McCanna, D. J., Barthod-Malat, A. V., and Gorbet, M. B. (2015). In vitro methods of assessing ocular biocompatibility using THP-1-derived macrophages. *Cutan. Ocul. Toxicol.* 34, 89–100. doi: 10.3109/15569527.2014.908205
- Meng, L., Jin, W., and Wang, X. (2015). RIP3-mediated necrotic cell death accelerates systemic inflammation and mortality. *Proc. Natl. Acad. Sci. U.S.A.* 112, 11007–11012. doi: 10.1073/pnas.1514730112
- Merle, N. S., Noe, R., Halbwegs-Mecarelli, L., Fremaux-Bacchi, V., and Roumenina, L. T. (2015). Complement system part II: role in immunity. *Front. Immunol.* 6:257. doi: 10.3389/fimmu.2015.00257
- Meyerhoff, W. L. (1988). Pathology of chronic suppurative otitis media. *Ann. Otol. Rhinol. Laryngol.* 97, 21–24.
- Minovi, A., and Dazert, S. (2014). Diseases of the middle ear in childhood. *GMS Curr. Top. Otorhinolaryngol. Head Neck Surg.* 13:Doc11. doi: 10.3205/cto000114
- Miramón, P., Kasper, L., and Hube, B. (2013). Thriving within the host: *Candida* spp. interactions with phagocytic cells. *Med. Microbiol. Immunol.* 202, 183–195. doi: 10.1007/s00430-013-0288-z
- Mishra, M., Ressler, A., Schlesinger, L. S., and Wozniak, D. J. (2015). Identification of OprF as a complement component C3 binding acceptor molecule on the surface of *Pseudomonas aeruginosa*. *Infect. Immun.* 83, 3006–3014. doi: 10.1128/IAI.00081-15
- Miskinyte, M., and Gordo, I. (2013). Increased survival of antibiotic-resistant *Escherichia coli* inside macrophages. *Antimicrob. Agents Chemother.* 57, 189–195. doi: 10.1128/AAC.01632-12
- Mittal, R., Grati, M., Gerring, R., Blackwelder, P., Yan, D., Li, J. D., et al. (2014). In vitro interaction of *Pseudomonas aeruginosa* with human middle ear epithelial cells. *PLoS ONE* 9:e91885. doi: 10.1371/journal.pone.0091885
- Mittal, R., Lisi, C. V., Gerring, R., Mittal, J., Mathee, K., Narasimhan, G., et al. (2015). Current concepts in the pathogenesis and treatment of chronic suppurative otitis media. *J. Med. Microbiol.* 64, 1103–1116. doi: 10.1099/jmm.0.000155
- Morinaga, Y., Yanagihara, K., Nakamura, S., Hasegawa, H., Seki, M., Izumikawa, K., et al. (2010). *Legionella pneumophila* induces cathepsin B-dependent necrotic cell death with releasing high mobility group box1 in macrophages. *Respir. Res.* 11:158. doi: 10.1186/1465-9921-11-158
- Morita, Y., Tomida, J., and Kawamura, Y. (2014). Responses of *Pseudomonas aeruginosa* to antimicrobials. *Front. Microbiol.* 4:422. doi: 10.3389/fmicb.2013.00422

- Navarro-García, F., Serapio-Palacios, A., Ugalde-Silva, P., Tapia-Pastrana, G., and Chavez-Dueñas, L. (2013). Actin cytoskeleton manipulation by effector proteins secreted by diarrheagenic *Escherichia coli* pathotypes. *Biomed. Res. Int.* 2013:374395. doi: 10.1155/2013/374395
- Nestorovich, E. M., Sugawara, E., Nikaido, H., and Bezrukov, S. M. (2006). *Pseudomonas aeruginosa* porin OprF: properties of the channel. *J. Biol. Chem.* 281, 16230–16237. doi: 10.1074/jbc.M600650200
- Nordmann, P., and Guibert, M. (1998). Extended-spectrum  $\beta$ -lactamase in *Pseudomonas aeruginosa*. *J. Antimicrob. Chemother.* 42, 128–132. doi: 10.1093/jac/42.2.128
- Oelschlaeger, T. A., Guerry, P., and Kopecko, D. J. (1993). Unusual microtubule-dependent endocytosis mechanisms triggered by *Campylobacter jejuni* and *Citrobacter freundii*. *Proc. Natl. Acad. Sci. U.S.A.* 90, 6884–6888. doi: 10.1073/pnas.90.14.6884
- Park, H., Ishihara, D., and Cox, D. (2011). Regulation of tyrosine phosphorylation in macrophage phagocytosis and chemotaxis. *Arch. Biochem. Biophys.* 510, 101–111. doi: 10.1016/j.abb.2011.02.019
- Park, S. Y., Choi, Y. H., Park, G., and Choi, Y. W. (2015). Neuroprotective effects of  $\alpha$ -iso-cubebenol on glutamate-induced neurotoxicity. *Environ. Toxicol. Pharmacol.* 40, 549–556. doi: 10.1016/j.etap.2015.08.008
- Pieters, J., and Gatfield, J. (2002). Hijacking the host: survival of pathogenic mycobacteria inside macrophages. *Trends Microbiol.* 10, 142–146. doi: 10.1016/S0966-842X(02)02305-3
- Poole, K. (2004). Resistance to beta-lactam antibiotics. *Cell. Mol. Life Sci.* 61, 2200–2223. doi: 10.1007/s00018-004-4060-9
- Poole, K. (2011). *Pseudomonas aeruginosa*: resistance to the max. *Front. Microbiol.* 2:65. doi: 10.3389/fmicb.2011.00065
- Qureishi, A., Lee, Y., Belfield, K., Birchall, J. P., and Daniel, M. (2014). Update on otitis media - prevention and treatment. *Infect. Drug Resist.* 7, 15–24. doi: 10.2147/IDR.S39637
- Rawling, E. G., Martin, N. L., and Hancock, R. E. (1995). Epitope mapping of the *Pseudomonas aeruginosa* major outer membrane porin protein OprF. *Infect. Immun.* 63, 38–42.
- Reusch, R. N. (2012). Biogenesis and functions of model integral outer membrane proteins: *Escherichia coli* OmpA and *Pseudomonas aeruginosa* OprF. *FEBS J.* 279, 893. doi: 10.1111/j.1742-4658.2012.08486.x
- Rietsch, A., Vallet-Gely, I., Dove, S. L., and Mekalanos, J. J. (2005). ExsE, a secreted regulator of type III secretion genes in *Pseudomonas aeruginosa*. *Proc. Natl. Acad. Sci. U.S.A.* 102, 8006–8011. doi: 10.1073/pnas.0503005102
- Rottner, K., Stradal, T. E., and Wehland, J. (2005). Bacteria-host-cell interactions at the plasma membrane: stories on actin cytoskeleton subversion. *Dev. Cell* 9, 3–17. doi: 10.1016/j.devcel.2005.06.002
- Sabatino, R., Di Cesare, A., Pasquaroli, S., Vignaroli, C., Citterio, B., Amiri, M., et al. (2015). Adherence and intracellular survival within human macrophages of *Enterococcus faecalis* isolates from coastal marine sediment. *Microbes Infect.* 17, 660–664. doi: 10.1016/j.micinf.2015.06.001
- Saunders, J., Murray, M., and Alleman, A. (2011). Biofilms in chronic suppurative otitis media and cholesteatoma: scanning electron microscopy findings. *Am. J. Otolaryngol.* 32, 32–37. doi: 10.1016/j.amjoto.2009.09.010
- Saunders, J. E., Raju, R. P., Boone, J. L., Hales, N. W., and Berryhill, W. E. (2011). Antibiotic resistance and otomycosis in the draining ear: culture results by diagnosis. *Am. J. Otolaryngol.* 32, 470–476. doi: 10.1016/j.amjoto.2010.09.009
- Schultze, J. L., Schmieder, A., and Goerdts, S. (2015). Macrophage activation in human diseases. *Semin. Immunol.* 27, 249–256. doi: 10.1016/j.smim.2015.07.003
- Schweizer, H. P., and Hoang, T. T. (1995). An improved system for gene replacement and xylE fusion analysis in *Pseudomonas aeruginosa*. *Gene* 158, 15–22. doi: 10.1016/0378-1119(95)00055-B
- Shinzaki, S., Ishii, M., Fujii, H., Iijima, H., Wakamatsu, K., Kawai, S., et al. (2016). N-Acetylglucosaminyltransferase V exacerbates murine colitis with macrophage dysfunction and enhances colitic tumorigenesis. *J. Gastroenterol.* 51, 357–369. doi: 10.1007/s00535-015-1119-3
- Sun, J., and Sun, J. (2014). Intracranial complications of chronic otitis media. *Eur. Arch. Otorhinolaryngol.* 271, 2923–2926. doi: 10.1007/s00405-013-2778-4
- Tam, V. C., and Aderem, A. (2014). Macrophage activation as an effector mechanism for cell-mediated immunity. *J. Immunol.* 193, 3183–3184. doi: 10.4049/jimmunol.1402046
- Taylor, J. B., Hogue, L. A., LiPuma, J. J., Walter, M. J., Brody, S. L., and Cannon, C. L. (2010). Entry of *Burkholderia* organisms into respiratory epithelium: CFTR, microfilament and microtubule dependence. *J. Cyst. Fibros.* 9, 36–43. doi: 10.1016/j.jcf.2009.10.002
- Toma, C., Murray, G. L., Nohara, T., Mizuyama, M., Koizumi, N., Adler, B., et al. (2014). Leptospiral outer membrane protein LMB216 is involved in enhancement of phagocytic uptake by macrophages. *Cell. Microbiol.* 16, 1366–1377. doi: 10.1111/cmi.12296
- Tunbridge, A. J., Stevanin, T. M., Lee, M., Marriott, H. M., Moir, J. W., Read, R. C., et al. (2006). Inhibition of macrophage apoptosis by *Neisseria meningitidis* requires nitric oxide detoxification mechanisms. *Infect. Immun.* 74, 729–733. doi: 10.1128/IAI.74.1.729-733.2006
- Valencia-Gallardo, C. M., Carayol, N., and Nhieu, G. (2015). Cytoskeletal mechanics during *Shigella* invasion and dissemination in epithelial cells. *Cell. Microbiol.* 17, 174–182. doi: 10.1111/cmi.12400
- Valentin-Weigand, P., Benkel, P., Rohde, M., and Chhatwal, G. S. (1996). Entry and intracellular survival of group B streptococci in J774 macrophages. *Infect. Immun.* 64, 2467–2473.
- Varela, J. C., and Tomlinson, S. (2015). Complement: an overview for the clinician. *Hematol. Oncol. Clin. North Am.* 29, 409–427. doi: 10.1016/j.hoc.2015.02.001
- Wallis, S., Atkinson, H., and Coatesworth, A. P. (2015). Chronic otitis media. *Postgrad. Med.* 127, 391–395. doi: 10.1080/00325481.2015.1027133
- Walsh, T. R., Toleman, M. A., Hryniewicz, W., Bennett, P. M., and Jones, R. N. (2003). Evolution of an integron carrying blavim2 in Eastern Europe: report from the SENTRY antimicrobial surveillance program. *J. Antimicrob. Chemother.* 52, 116–119. doi: 10.1093/jac/dkg299
- Weischenfeldt, J., and Porse, B. (2008). Bone Marrow-Derived Macrophages (BMM): isolation and applications. *CSH Protoc.* 2008:pdb.rot5080. doi: 10.1101/pdb.prot5080
- Welin, A., Eklund, D., Stendahl, O., and Lerm, M. (2011). Human macrophages infected with a high burden of ESAT-6-expressing *M. tuberculosis* undergo caspase-1- and cathepsin B-independent necrosis. *PLoS ONE* 6:e20302. doi: 10.1371/journal.pone.0020302
- Welin, A., Winberg, M. E., Abdalla, H., Särndahl, E., Rasmusson, B., Stendahl, O., et al. (2008). Incorporation of *Mycobacterium tuberculosis* lipoarabinomannan into macrophage membrane rafts is a prerequisite for the phagosomal maturation block. *Infect. Immun.* 76, 2882–2887. doi: 10.1128/IAI.01549-07
- Woodruff, W. A., and Hancock, R. E. (1989). *Pseudomonas aeruginosa* outer membrane protein F: structural role and relationship to the *Escherichia coli* OmpA protein. *J. Bacteriol.* 171, 3304–3309.
- Yakhnina, A. A., McManus, H. R., and Bernhardt, T. G. (2015). The cell wall amidase AmiB is essential for *Pseudomonas aeruginosa* cell division, drug resistance and viability. *Mol. Microbiol.* 97, 957–973. doi: 10.1111/mmi.13077
- Yang, G., Xiao, X., Yin, D., and Zhang, X. (2012). The interaction between viral protein and host actin facilitates the virus infection to host. *Gene* 507, 139–145. doi: 10.1016/j.gene.2012.06.026
- Yeo, S. G., Park, D. C., Hong, S. M., Cha, C. I., and Kim, M. G. (2007). Bacteriology of chronic suppurative otitis media—a multicentre study. *Acta Otolaryngol.* 127, 1062–1067. doi: 10.1080/00016480601126978
- Yoeruek, E., Bartz-Schmidt, K. U., and Hofmann, J. (2016). Impact of the radius of the injector system on the cell viability in descemet membrane endothelial keratoplasty: an ex vivo experimental study. *Acta Ophthalmol.* 94, e1–e5. doi: 10.1111/aos.12787
- Yoon, S. S., Hennigan, R. F., Hilliard, G. M., Ochsner, U. A., Parvatiyar, K., Kamani, M. C., et al. (2002). *Pseudomonas aeruginosa* anaerobic respiration in biofilms: relationships to cystic fibrosis pathogenesis. *Dev. Cell* 3, 593–603. doi: 10.1016/S1534-5807(02)00295-2
- Yorgancılar, E., Yildirim, M., Gun, R., Bakir, S., Tekin, R., Gocmez, C., et al. (2013). Complications of chronic suppurative otitis media: a retrospective review. *Eur. Arch. Otorhinolaryngol.* 270, 69–76. doi: 10.1007/s00405-012-1924-8



- Yuan, M., Deleuil, F., and Fällman, M. (2005). Interaction between the Yersinia tyrosine phosphatase YopH and its macrophage substrate, Fyn-binding protein, Fyb. *J. Mol. Microbiol. Biotechnol.* 9, 214–223. doi: 10.1159/000089649
- Zhang, L., and Wang, C. C. (2014). Inflammatory response of macrophages in infection. *Hepatobiliary Pancreat. Dis. Int.* 13, 138–152. doi: 10.1016/S1499-3872(14)60024-2
- Zheng, K., Kitazato, K., Wang, Y., and He, Z. (2015). Pathogenic microbes manipulate cofilin activity to subvert actin cytoskeleton. *Crit. Rev. Microbiol.* 8, 1–19. doi: 10.3109/1040841X.2015.1010139
- Zou, J., and Shankar, N. (2014). *Enterococcus faecalis* infection activates phosphatidylinositol 3-kinase signaling to block apoptotic cell death in macrophages. *Infect. Immun.* 82, 5132–5142. doi: 10.1128/IAI.02426-14

**Conflict of Interest Statement:** The authors declare that the research was conducted in the absence of any commercial or financial relationships that could be construed as a potential conflict of interest.

Copyright © 2016 Mittal, Lisi, Kumari, Grati, Blackwelder, Yan, Jain, Mathee, Weckwerth and Liu. This is an open-access article distributed under the terms of the Creative Commons Attribution License (CC BY). The use, distribution or reproduction in other forums is permitted, provided the original author(s) or licensor are credited and that the original publication in this journal is cited, in accordance with accepted academic practice. No use, distribution or reproduction is permitted which does not comply with these terms.