

Whole-Genome Sequence of the *Trypoxylus dichotomus* Japanese rhinoceros beetle

Norichika Ogata^{1§}

¹Nihon BioData Corporation

[§]To whom correspondence should be addressed: norichik@nbiodata.com

Abstract

The draft whole-genome sequence of the Japanese rhinoceros beetle, *Trypoxylus dichotomus* was obtained using long-read PacBio sequence technology. The final assembled genome consisted of 739 Mbp in 2,347 contigs, with 24.5× mean coverage and a G+C content of 35.99%.

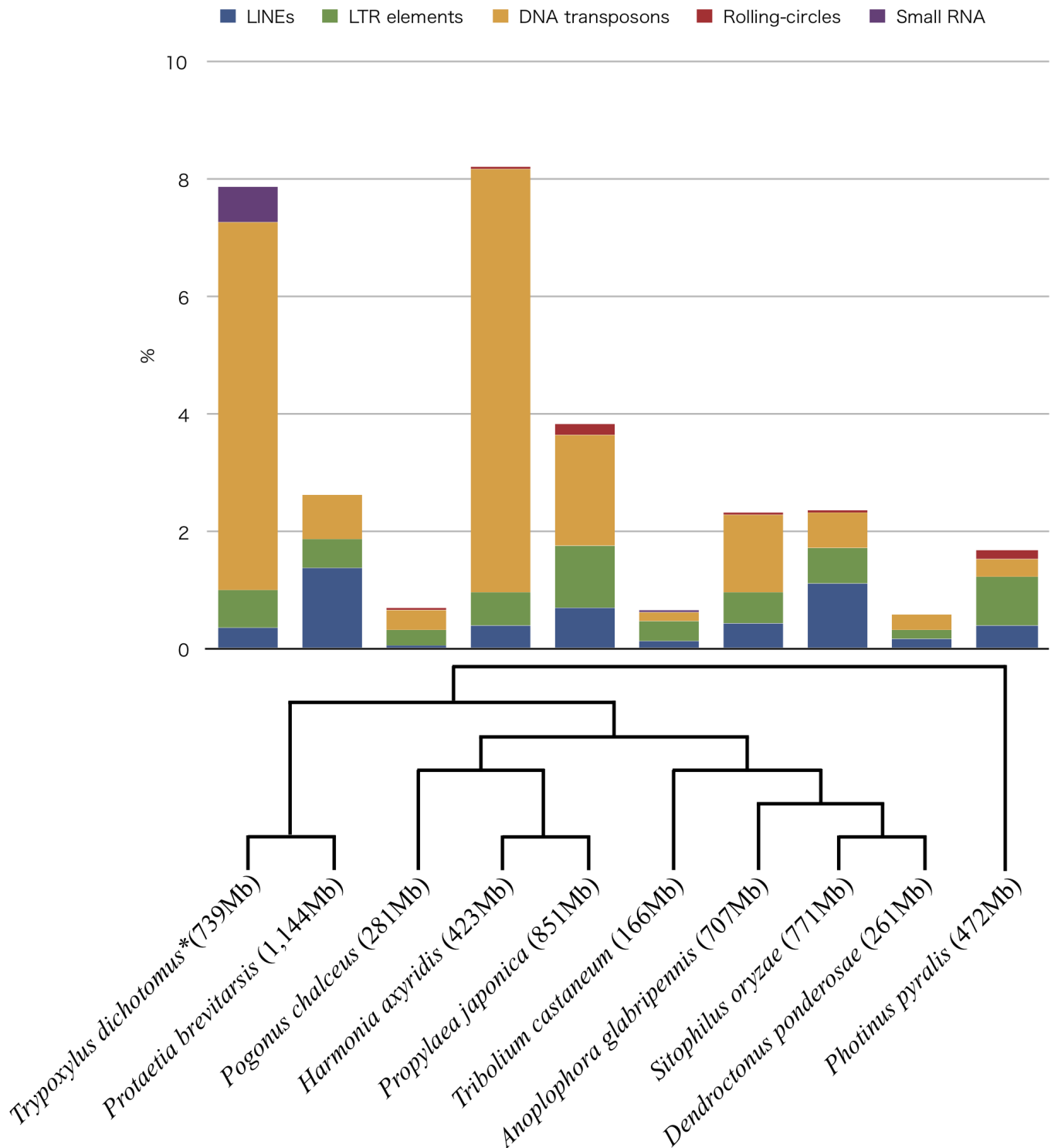


Figure 1. Repeat sequences in the genomes of 10 beetle species: The interspersed repeats and low complexity DNA sequences were screened using RepeatMasker. *Trypoxylus dichotomus* (*decoded in this study), *Protaetia brevitarsis*, *Pogonus chalceus*, *Harmonia axyridis*, *Propylaea japonica*, *Tribolium castaneum*, *Anoplophora glabripennis*, *Sitophilus oryzae*, *Dendroctonus ponderosae* and *Photinus pyralis* were compared. The vertical axis of the bar plot shows the percentage of repeat sequences in each genome. The phylogenetic tree is based on previous studies (McKenna *et al.*, 2019 and Majerus *et al.*, 2016).

Description

Genomic research of the Japanese rhinoceros beetle, *Trypoxylus dichotomus* has been of interest since their large body size (~35g) and sexual dimorphism in adult horn, and although several transcriptome studies had been conducted (Ogata *et al.*, 2017; Ohde *et al.*, 2018; Warren *et al.*, 2014), the genome itself has not yet been deciphered. The haploid chromosome number, n , 10, and the male heterogamety of XY-type established for the beetle are known (Kudoh *et al.*, 1970). Here we sequenced and assembled the genome of the beetle. Last-instar female larvae were harvested at Fuchu-shi, Tokyo, Japan and reared in leaf mold. Larval fat bodies were isolated. Total DNA was extracted from the fat bodies using the Qiagen Blood & Cell Culture DNA Maxi Kit (Qiagen, Gaithersburg, MD). Isopropanol and the eluted DNA mixture were dispensed to 1.5 mL tube at the step of centrifuging DNA for making pellet. DNA shearing performed using Megaruptor® 3 (Diagenode, Liège, Belgium), targeting an average fragment size of 20 kb. The SMRTbell Express template preparation kit 2.0 (Pacific Biosciences, Menlo Park, CA) and the Barcoded Overhang Adapter Kit (Pacific Biosciences) were used to ligate hairpin adapters required for sequencing to the fragmented DNA. The library was size selected using the SageELF (Sage Science, Beverly, MA) and the 0.75% Agarose DNA ELF cassette with marker 75 (Sage Science). Sequence template was prepared by Sequel II Binding Kit 2.0 (Pacific Biosciences) and Sequel II DNA Internal Control Kit 1.0 (Pacific Bio-sciences). Sequencing was done on the Sequel II System (Pacific Biosciences) using Sequel II Sequencing Kit 2.0 (Pacific Biosciences) and Sequel SMRT Cell Oil (Pacific Biosciences). Data processing was performed using SMRT Link v8.0.0 (Pacific Biosciences). In total, 18,816,210,693 bp, 1,363,523 reads were generated as CCS reads. The G+C content of the beetle genome was 35.99%. Library preparation and sequencing were performed at the Takara Bio Inc. (Kusatsu, Shiga, Japan). Reads were trimmed, corrected, and assembled using the Hifiasm software version 0.3.0 (Gheng *et al.*, 2020). The final assembled genome consisted of 739,405,423 bp in 2,347 contigs, with $24.5\times$ mean coverage. The largest contig size was 36,507,117 bp. The N50 of the contigs was 7,929,129 bases. The genome was annotated using public transcriptome data (DRA004723 and DRA006307), hisat2 (Kim *et al.*, 2019) and cufflinks (Trapnell *et al.*, 2010). The mapped rate of sequence data DRA004723 to the genome was 94%. The transcripts number was 34,598. For the genomic sequence, 99.6% of the BUSCO orthologs were detected as complete sequences, 0.1% were fragmented and 0.3% were missing (-l option was insecta_odb10) (Simão *et al.*, 2015). The interspersed repeats and low complexity DNA sequences in the genome were screened using RepeatMasker (Smit *et al.*, 2015). LINEs, LTR elements, DNA transposons, and small RNAs occupied 0.36%, 0.64%, 6.28%, and 0.61% of the genome, respectively. The genome of *Trypoxylus dichotomus* showed more small RNAs than other Coleopteran genomes (*Protaetia brevitarsis* (GCA_004143645.1), *Pogonus chalceus* (GCA_002278615.1), *Harmonia axyridis* (GCA_003402655.1) (Ando *et al.*, 2018), *Propylaea japonica* (GCA_013421045.1) (Zhang *et al.*, 2020), (*Tribolium castaneum* (GCF_000002335.3) (Herndon *et al.*, 2020), *Anoplophora glabripennis* (GCF_000390285.2), *Sitophilus oryzae* (GCF_002938485.1), *Dendroctonus ponderosae* (GCA_000346045.2) (Keeling *et al.*, 2013) and *Photinus pyralis* (GCF_008802855.1) (Fallon *et al.*, 2018)).

Reagents

This whole-genome shotgun project has been deposited at GenBank under the accession no. BNES00000000.1. Raw reads were deposited at DDBJ SRA under the accession no. DRA010769.

Acknowledgments: We thank Ph.D. Tomoko Matsuda for the selection of the nine beetle genomes and analysis of the repeats, and Ph.D. Shogo Konishi for his help with DNA extraction.

References

- Ando T, Matsuda T, Goto K, Hara K, Ito A, Hirata J, Yatomi J, Kajitani R, Okuno M, Yamaguchi K, Kobayashi M, Takano T, Minakuchi Y, Seki M, Suzuki Y, Yano K, Itoh T, Shigenobu S, Toyoda A, Niimi T. 2018. Repeated inversions within a pannier intron drive diversification of intraspecific colour patterns of ladybird beetles. *Nat Commun* 9: 3843. PMID: 30242156.
- Cheng H, Concepcion GT, Feng X, Zhang H, Li H. 2020. Haplotype-resolved de novo assembly with phased assembly graphs with hifiasm. *Nat Methods* 18: 170-175. PMID: 33526886.
- Fallon TR, Lower SE, Chang CH, Bessho-Uehara M, Martin GJ, Bewick AJ, Behringer M, Debat HJ, Wong I, Day JC, Suvorov A, Silva CJ, Stanger-Hall KF, Hall DW, Schmitz RJ, Nelson DR, Lewis SM, Shigenobu S, Bybee SM, Larracuente AM, Oba Y, Weng JK. 2018. Firefly genomes illuminate parallel origins of bioluminescence in beetles. *Elife* 7: e36495. PMID: 30324905.
- Herndon N, Shelton J, Gerischer L, Ioannidis P, Ninova M, Dönitz J, Waterhouse RM, Liang C, Damm C, Siemanowski J, Kitzmann P, Ulrich J, Dippel S, Oberhofer G, Hu Y, Schwirz J, Schacht M, Lehmann S, Montino A, Posnien N, Gurska D, Horn T, Seibert J, Vargas Jentsch IM, Panfilio KA, Li J, Wimmer EA, Stappert D, Roth S, Schröder R, Park Y, Schoppmeier M, Chung HR, Klingler M, Kittelmann S, Friedrich M, Chen R, Altincicek B, Vilcinskis A, Zdobnov E, Griffiths-Jones S, Ronshaugen M, Stanke M, Brown SJ, Bucher G. 2020. Enhanced genome assembly and a new official gene set for *Tribolium castaneum*. *BMC Genomics* 21: 47. PMID: 31937263.

- Keeling CI, Yuen MM, Liao NY, Docking TR, Chan SK, Taylor GA, Palmquist DL, Jackman SD, Nguyen A, Li M, Henderson H, Janes JK, Zhao Y, Pandoh P, Moore R, Sperling FA, Huber DP, Birol I, Jones SJ, Bohlmann J. 2013. Draft genome of the mountain pine beetle, *Dendroctonus ponderosae* Hopkins, a major forest pest. *Genome Biol* 14: R27. PMID: 23537049.
- Kim D, Paggi JM, Park C, Bennett C, Salzberg SL. 2019. Graph-based genome alignment and genotyping with HISAT2 and HISAT-genotype. *Nat Biotechnol* 37: 907-915. PMID: 31375807.
- Kudoh K, Abe A, Kondoh I, Satoh N, Saitoh K. 1970. Some cytological aspects of three species of beetles. *Kontyu* 38: 232-8.
- Majerus M, Roy H, Brown P. 2016. The Structure of Ladybirds. In *A Natural History of Ladybird Beetles* (pp. 15-48). Cambridge: Cambridge University Press. DOI: doi.org/10.1017/CBO9781316336960.003
- McKenna DD, Shin S, Ahrens D, Balke M, Beza-Beza C, Clarke DJ, Donath A, Escalona HE, Friedrich F, Letsch H, Liu S, Maddison D, Mayer C, Misof B, Murin PJ, Niehuis O, Peters RS, Podsiadlowski L, Pohl H, Scully ED, Yan EV, Zhou X, Ślipiński A, Beutel RG. 2019. The evolution and genomic basis of beetle diversity. *Proc Natl Acad Sci U S A* 116: 24729-24737. PMID: 31740605.
- Ogata N, Iwabuchi K. 2017. Relevant principal factors affecting the reproducibility of insect primary culture. *In Vitro Cell Dev Biol Anim* 53: 532-537. PMID: 28229336.
- Ohde T, Morita S, Shigenobu S, Morita J, Mizutani T, Gotoh H, Zinna RA, Nakata M, Ito Y, Wada K, Kitano Y, Yuzaki K, Toga K, Mase M, Kadota K, Rushe J, Lavine LC, Emlen DJ, Niimi T. 2018. Rhinoceros beetle horn development reveals deep parallels with dung beetles. *PLoS Genet* 14: e1007651. PMID: 30286074.
- Simão FA, Waterhouse RM, Ioannidis P, Kriventseva EV, Zdobnov EM. 2015. BUSCO: assessing genome assembly and annotation completeness with single-copy orthologs. *Bioinformatics* 31: 3210-2. PMID: 26059717.
- Smit AFA, Hubley R, Green P. 2015. RepeatMasker Open-4.0. <http://www.repeatmasker.org>
- Trapnell C, Williams BA, Pertea G, Mortazavi A, Kwan G, van Baren MJ, Salzberg SL, Wold BJ, Pachter L. 2010. Transcript assembly and quantification by RNA-Seq reveals unannotated transcripts and isoform switching during cell differentiation. *Nat Biotechnol* 28: 511-5. PMID: 20436464.
- Warren IA, Vera JC, Johns A, Zinna R, Marden JH, Emlen DJ, Dworkin I, Lavine LC. 2014. Insights into the development and evolution of exaggerated traits using de novo transcriptomes of two species of horned scarab beetles. *PLoS One* 9: e88364. PMID: 24586317.
- Zhang L, Li S, Luo J, Du P, Wu L, Li Y, Zhu X, Wang L, Zhang S, Cui J. 2020. Chromosome-level genome assembly of the predator *Propylea japonica* to understand its tolerance to insecticides and high temperatures. *Mol Ecol Resour* 20: 292-307. PMID: 31599108.

Funding: This work was not supported by any grant.

Author Contributions: Norichika Ogata: Conceptualization, Data curation, Formal analysis, Investigation, Project administration, Visualization, Writing - original draft.

Reviewed By: David Angeles-Albores

History: Received September 15, 2021 **Revision received** September 27, 2021 **Accepted** September 30, 2021 **Published** October 11, 2021

Copyright: © 2021 by the authors. This is an open-access article distributed under the terms of the Creative Commons Attribution 4.0 International (CC BY 4.0) License, which permits unrestricted use, distribution, and reproduction in any medium, provided the original author and source are credited.

Citation: Ogata, N (2021). Whole-Genome Sequence of the *Trypoxylus dichotomus* Japanese rhinoceros beetle. *microPublication Biology*. <https://doi.org/10.17912/micropub.biology.000487>