

Research article

Open Access

## A single point-mutation within the melanophilin gene causes the lavender plumage colour dilution phenotype in the chicken

Mohsen Vaez<sup>†1</sup>, Sarah A Follett<sup>†1</sup>, Bertrand Bed'hom<sup>2</sup>, David Gourichon<sup>2</sup>, Michèle Tixier-Boichard<sup>2</sup> and Terry Burke<sup>\*1</sup>

Address: <sup>1</sup>Department of Animal and Plant Sciences, University of Sheffield, Sheffield S10 2TN, UK and <sup>2</sup>INRA, AgroParisTech, UMR1236 Génétique et Diversité Animales, F-78350, Jouy-en-Josas, Cedex, France

Email: Mohsen Vaez - bop03mv@sheffield.ac.uk; Sarah A Follett - s.a.johns@sheffield.ac.uk; Bertrand Bed'hom - bertrand.bedhom@jouy.inra.fr; David Gourichon - david.gourichon@tours.inra.fr; Michèle Tixier-Boichard - michele.tixier-boichard@recherche.gouv.fr; Terry Burke\* - t.a.burke@sheffield.ac.uk

\* Corresponding author †Equal contributors

Published: 15 January 2008

Received: 14 August 2007

BMC Genetics 2008, 9:7 doi:10.1186/1471-2156-9-7

Accepted: 15 January 2008

This article is available from: <http://www.biomedcentral.com/1471-2156/9/7>

© 2008 Vaez et al; licensee BioMed Central Ltd.

This is an Open Access article distributed under the terms of the Creative Commons Attribution License (<http://creativecommons.org/licenses/by/2.0>), which permits unrestricted use, distribution, and reproduction in any medium, provided the original work is properly cited.

### Abstract

**Background:** The lavender phenotype in the chicken causes the dilution of both black (eumelanin) and red/brown (phaeomelanin) pigments. Defects in three genes involved in intracellular melanosomal transport, previously described in mammals, give rise to similar diluted pigmentation phenotypes as those seen in lavender chickens.

**Results:** We have used a candidate-gene approach based on an expectation of homology with mammals to isolate a gene involved in pigmentation in chicken. Comparative sequence analysis of candidate genes in the chicken identified a strong association between a mutation in the *MLPH* gene and the diluted pigmentation phenotype. This mutation results in the amino acid change R35W, at a site also associated with similar phenotypes in mice, humans and cats.

**Conclusion:** This is the first time that an avian species with a mutation in the *MLPH* gene has been reported.

### Background

Lavender (*LAV\*<sup>L</sup>*) is an autosomal recessive mutation of the chicken (*Gallus gallus*) affecting the neural crest derived melanocytes [1]. It causes the dilution of both eumelanin and phaeomelanin to a light grey or buff, respectively (Figure 1). Light and electron microscope studies have revealed that, although lavender melanocytes possess relatively normal dendrite morphology, there is defective peripheral accumulation of melanosomes to the dendrites [2]. This results in the patchy transfer of melanosomes into the keratinocytes of the growing feather. The dilution effect is essentially the result of a mixture of pigmented and unpigmented regions within

the feather barbs. Although lavender melanocytes are defective in melanosomal translocation, they show no apparent ultrastructural defect in the microfilament system [2].

Similar dilution effects can be seen in the mouse mutants *dilute*, *ashen* and *leaden*. The melanocytes of these mutants each display a similarly defective melanosomal transport system to that seen in lavender chickens, resulting in the patchy transfer of pigment to the keratinocytes of the hair. *Dilute*, *ashen* and *leaden* have been extensively studied and the process of peripheral accumulation of melanosomes has been shown to be controlled by an unconventional



**Figure 1**  
**The lavender phenotype.** Chickens expressing (a) wild type ( $LAV^*N/LAV^*N$ ), and (b) lavender ( $LAV^*L/LAV^*L$ ), phenotypes on an extended black ( $E^*E$ ) background.

myosin, *MYOVA* [3], the ras-related GTPase *RAB27a* [4] and the Rab effector melanophilin (*MLPH*, also known as *Slac-2*) [5]. In humans, mutations in these genes have been identified in patients with the rare autosomal recessive disorder, *Griscelli syndrome* (GS). Three forms of GS have been described and, although all show pigmentary dilution of the skin and hair, additional defects have also been observed. Patients with *GS1* carry mutations within *MYOVA* and have a severe primary neurological impairment [6,7] and some of the alleles of *MYOVA* in the mouse also show neurological defects [8]. Mutations in *RAB27A* are associated with *GS2*, and are characterised by an immune defect [9-11]. In *ashen* mice additional defects include prolonged bleeding times due to defects in the platelet-dense granules [4]. Mutations in *MLPH*, in both humans with *Griscelli syndrome* type III and *leaden* mice, have been shown to be associated only with hypopigmentation and no other physiological problems [12].

The products of these three genes work together to anchor melanosomes to the actin cytoskeleton, thus facilitating their transport within the cell. They form a protein complex that has been shown to be essential for the capture and movement of melanosomes via the actin cytoskeleton [13-16]. MyoVa is an actin-based motor within the melanocyte. Mlph binds with MyoVa at one end and Rab27a, which is itself targeted to the melanosomal membrane, at the other (for a full review see reference [17]).

The *MLPH* gene is well conserved between mouse and human. The protein consists of several well defined domains. At the N-terminus there are two Slp homology domains (SHD), as well as a zinc finger domain, all of which have been shown to bind Rab proteins. Binding of Myosin Va occurs towards the centre and at the N-terminus. In the human, a C103T transition was identified in an SHD in exon 1, resulting in an R35W substitution [12]. In *leaden* mice, R35 is one of seven deleted residues, REEERLQ, resulting from a 21-bp deletion [5]. In both

humans and mice it is postulated that the dilution phenotype is caused by the inability of Mlph to bind Rab27a and link it to MyoVa. Brumbaugh *et al.* suggested that *leaden* in mice and *lavender* in chicken might be homologous [1], although to our knowledge this hypothesis has not been tested.

Pigment-dilution phenotypes associated with mutations in *MLPH* have also been described in several other mammals, such as cats, dogs and mink [18-22]. Experiments in Japanese quail *Coturnix coturnix japonica* using chicken-quail hybrids have indicated that the same gene is responsible for both the quail *lavender*, also known as *bleu*, and the chicken *lavender* [23]. In other bird species, similar feather colour dilutions have been reported, including the *recessive slate* turkey (*Meleagris gallopavo*) [24], *milky* pigeon (*Columba livia*) [25], and the *lavender* muscovy duck (*Cairina moschata*) [26,27]. It is as yet unknown which genes are responsible for these dilution mutations in any bird species.

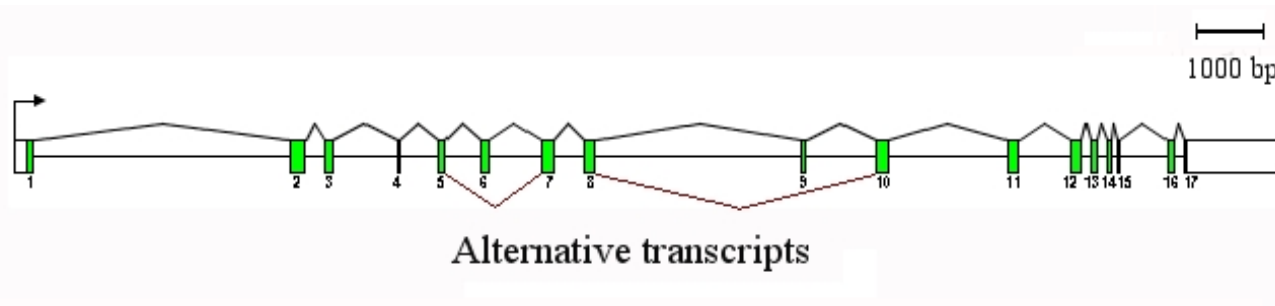
Given the phenotype of *lavender* melanocytes we suspected that the melanophilin gene might underlie the *LAV* locus. Here, we present strong evidence that *lavender* in the chicken is caused by a single nucleotide substitution in the *MLPH* gene.

## Results

### Identification and expression of the avian melanophilin gene

*MLPH* is located on chicken chromosome 7. The genomic organisation of melanophilin is shown (Figure 2). Sequence analysis carried out on cDNA, and confirmed on genomic DNA, showed that *MLPH* consists of 17 exons that contain 2052 bp of coding sequence, translating into 683 amino acids. We found that exons 6 and/or 9 are absent in some transcripts, most probably due to alternative splicing events (Figure 3). Exon 1 of chicken *MLPH* is also homologous to exons 1 and 2 in mammals [5,12,19].

In a similar manner to the expression seen in mice [5], chicken *MLPH* is expressed predominantly in epithelial-rich tissues (Figure 3). We found no differences in the level of expression with respect to sex or genotype, except in the ovary, where expression was higher in *lavender* females (data not shown). Expression of the ubiquitously expressed *GAPDH* was constant across all samples. With respect to age, we detected the highest degree of embryonic expression at embryonic day 14 (E14), consistent with this period having the highest rate of development of feather follicles [28], reducing at E17 and then increasing again at 10 weeks, when the adult plumage is being produced (Figure 3).



**Figure 2**  
**Schematic diagram depicting the intron/exon organisation of the chicken *MLPH* gene.** Coding regions are shown shaded and UTR sequences in white. Exons 6 and/or 9 are removed by splicing in some isoforms.

**Characterisation of the causal mutation of lavender in the chicken**

We identified 7 SNPs – 5 synonymous and 2 non-synonymous variants (C103T, non-synonymous (R35W); T996C, synonymous; A1056G, synonymous; C1284T, synonymous; A1356G, non-synonymous (I452M); G1701A, synonymous; C1824T, synonymous) – amongst the 94 chicken samples sequenced in their entirety for this study. Of the two non-synonymous SNPs (Table 1), only one was found to be associated with the *lavender* phenotype (Figure 4A). All the other SNPs were found to be polymorphic in wild type birds. This single point-mutation, found in exon 1, 103 bp from the start codon, results in the amino acid change R35W (where an Arginine in the wild type is replaced by a Tryptophan), which is the same mutation reported in humans with Griscelli syndrome type III [12], and is also included in the deletion found in *leaden* mice [5] (Figure 4B).

The C103T mutation results in the loss of the single restriction site for the *Bsr*BI restriction enzyme, which cuts the sequence CCGCTC, found only in the wild-type *LAV\*N* allele. This meant that we could design a simple RFLP test in order to identify the presence or absence of

the *lavender* allele. Using a PCR product amplified from genomic DNA, the *LAV\*N* allele is digested into two fragments of sizes 334 bp and 146 bp by *Bsr*BI, while the *LAV\*L* allele remains intact at 480 bp (Figure 5).

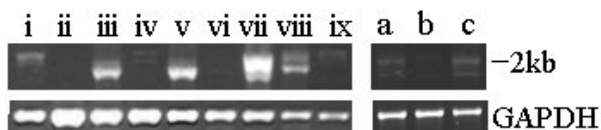
We obtained the RFLP genotype for chickens of known *lavender* genotype in the Nouzilly pedigrees. For the 159 individuals tested in this manner, we found complete association between the *lavender* allele and the presence of the C103T SNP: all 46 individuals with the *lavender* phenotype were homozygous for the 480-bp allele and all birds known to be heterozygous for *LAV\*N/LAV\*L* (offspring of four *lavender* dams mated with a wild-type sire) were heterozygous at C103T.

Analysis of cosegregation in a pedigree confirmed this result (Figure 6). Several informative families were produced by mating heterozygous dams to homozygous *lavender* sires (Figure 6). The segregation of haplotypes was completely in accordance with the observed phenotypes (LOD = 3.91).

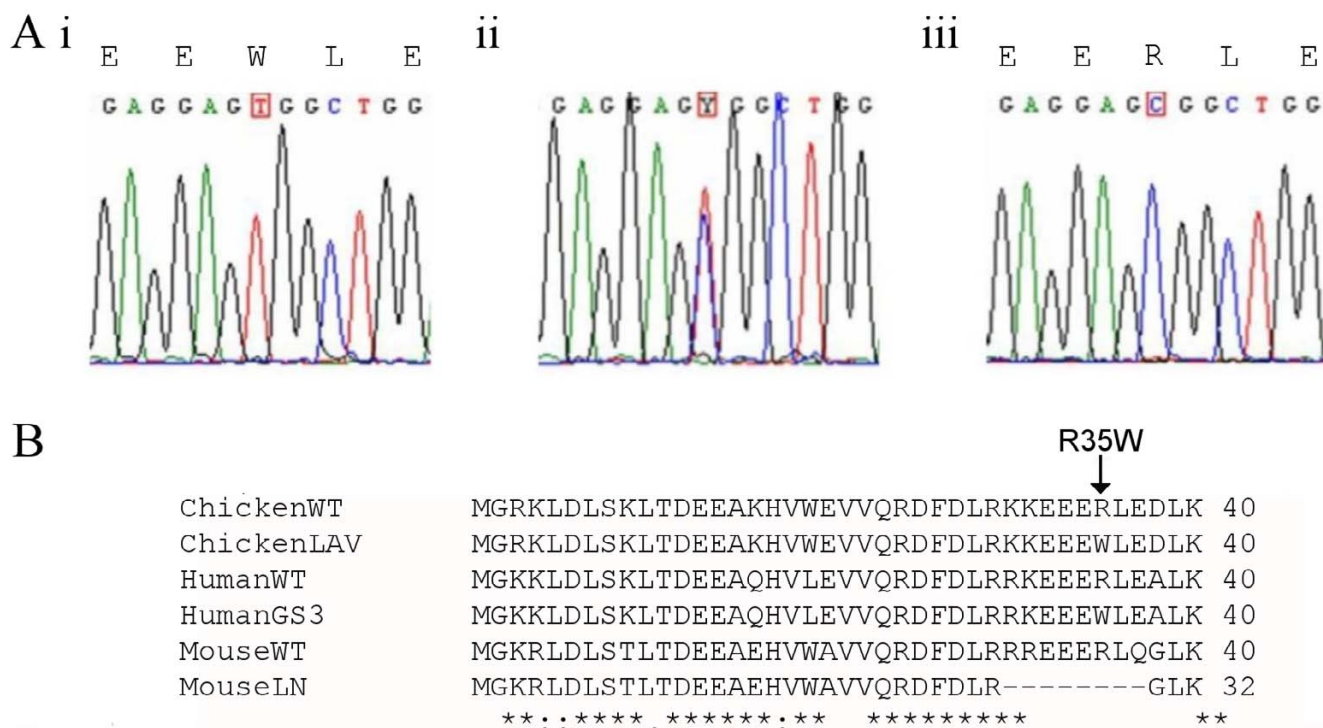
**Discussion**

We have used a comparative-gene approach to identify the mutation underlying the *lavender* phenotype in the chicken. *Lavender* dilutes plumage colour in a manner comparable to the diluted coat phenotypes of the mouse mutants *dilute*, *ashen* and *leaden* [3-5]. Comparisons at the ultrastructural level, between *lavender* and *leaden* melanocytes, together with the physiological similarities of both mutants – showing no harmful effects in each case – led us to hypothesise that the same gene, melanophilin, might be responsible.

Sequence analysis of the coding sequence of *MLPH* revealed a non-synonymous substitution in exon 1 that segregated perfectly with the *LAV\*L* allele. This SNP, C103T, results in the amino acid change R35W. The exact same mutation was also found in humans with Griscelli



**Figure 3**  
**Expression of *MLPH* in adult and embryonic tissues of the male wild-type chicken.** Tissues: (i) liver, (ii) muscle, (iii) kidney, (iv) heart, (v) lung, (vi) testis, (vii) skin, (viii) brain and (ix) spleen, and skin at ages (a) E14, (b) E17 and (c) 10 weeks. Size is indicated on the right.



**Figure 4**  
**A single point-mutation is associated with the lavender allele.** (A) Sequence traces for the part of chicken *MLPH* exon I showing the C103T SNP; (i) *LAV\*L/LAV\*L*, (ii) *LAV\*N/LAV\*L*, (iii) *LAV\*N/LAV\*N*. Reading frame is +1, and respective amino acids are shown above the first base pair in a codon for the homozygous sequences. (B) ClustalW alignment of the wild type (WT) and mutated (LN, GS3 and LAV, respectively) amino acid sequences from mouse [6], human [13], and chicken.

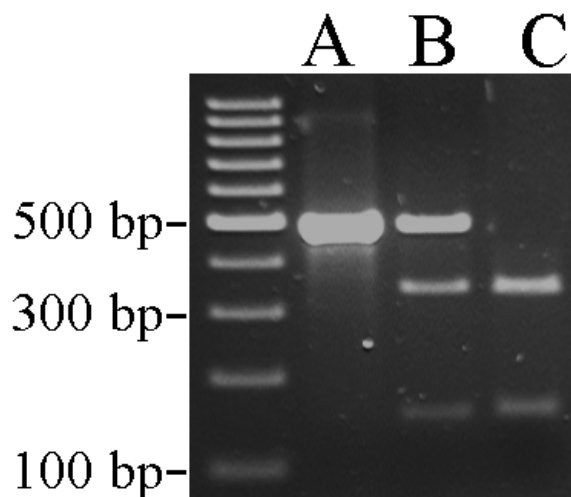
syndrome type III [12]. The translation of the first 120 base pairs of sequence from the start codon of the chicken *MLPH* gene (Figure 4B) shares 87% and 77% sequence identity, with E values of 1e-9 and 3e-9, respectively, with the human and mouse sequences. It has been postulated that the mutation results in a change in the 3-dimensional structure of the protein, so altering the ability of the *Mlph* protein to act as an effective linker between Rab27a and Myosin 5 [12]. Disruption of this triprotein complex

reduces the capacity for melanosome translocation to the periphery of the cell in readiness for transfer to the keratinocytes of the developing feather. Methylation is a potent mutagen and it is known that there is a bias in GC-rich regions towards the methyl-induced mutation of CpG residues into TpG residues [29]. The C130T mutation, now found in chickens as well as humans, is found at a CpG site, which may explain why this same mutation has occurred multiple times during evolution.

**Table 1: Two non-synonymous SNPs in the coding sequence of *MLPH* in a selection of different chicken phenotypes.**

Phenotype	Nucleotide at position 103			Nucleotide at position 1356		
	C/C	C/T	T/T	A/A	A/G	G/G
White	27	0	0	18	5	4
Silver	7	0	0	7	0	0
Black/Brown	13	14	0	24	0	3
Mottled	18	0	0	18	0	0
Lavender	0	0	15	0	0	15

Only base pair position 103, causing the R35W substitution, was shared by all the *lavender* phenotypes studied and those that were expected to be heterozygous at this locus.



**Figure 5**  
**PCR-RFLP analysis for the presence/absence of the *LAV\*L* allele.** PCR amplification from genomic DNA results in a band of size 480 bp. Digestion with *BsrBI* cuts the wild type *LAV\*N* allele into two fragments of sizes 334 bp and 146 bp, while the *LAV\*L* allele does not digest; (A) *LAV\*L/LAV\*L*, (B) *LAV\*N/LAV\*L*, (C) *LAV\*N/LAV\*N*.

The genomic structure of the chicken *MLPH* gene is very similar, though not identical, to that of the mouse, human, dog and cat genes. Differences were observed with respect to the chicken exon 9, which is lacking from all the mammalian species. Exon 4, which is similar to exon 5 in the dog gene, is also absent in the human, mouse and cat sequences. In addition, exon 8 (exon 9 in human and mouse) has not been identified in dog and cat. The promoter and start codon of chicken *MLPH* are located in exon 1, while in humans the start codon is located in exon 2 [12].

The splicing events that we observed in chicken have also been reported in mammals. Our data confirm that there are no splicing differences between the *lavender* and wild-type alleles, and the same has been reported in humans. However, a recent study in the dog suggests that a SNP at the end of the untranslated exon 1 causes a slicing defect which results in reduced levels of the *MLPH* transcript in dogs with diluted coat colours [22]. This is a novel kind of mutation in *MLPH*, not previously seen before. In the chicken *MLPH* gene it has not yet been possible to determine the sites of alternative splicing events responsible for the different transcripts seen in both wild type and *lavender* samples. However, splicing signals can act from either close or distant positions from splice sites. Thus, it is

sometimes difficult to identify the causal sites for alternative splicing events [30].

### Conclusion

A mutation in *MLPH* has occurred independently in the evolution of several domesticated animal species [18,24], often in the same, apparently highly mutable, location within exon 1. A number of other domesticated bird species also display a similar diluted phenotype, suggesting that melanophilin could also be a good candidate for these mutations. Several diluted phenotypes have been described in chickens, and molecular genetics is now starting to unravel the mechanisms underlying this diversity of plumage morphs that has been selected for during domestication.

### Methods

#### *In-silico* identification of a homologue of melanophilin in the chicken

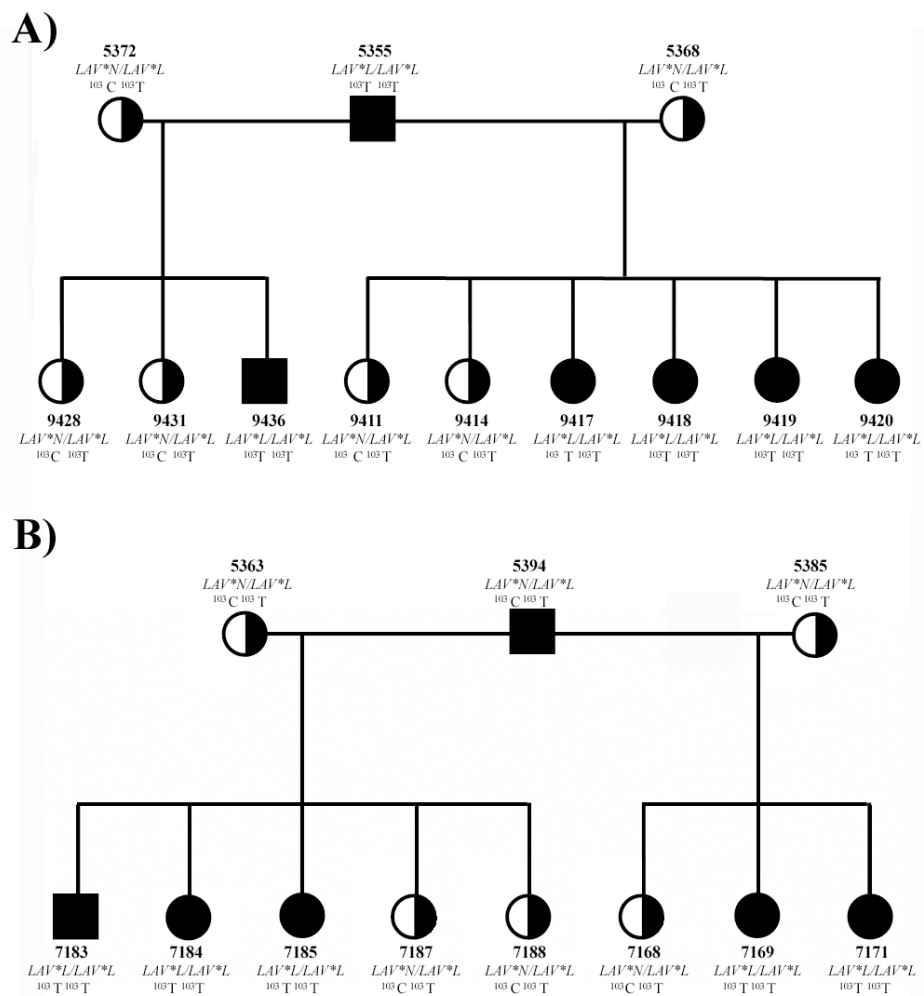
The protein sequence of the murine melanophilin gene (NM053015) was used to search for a homologous gene in the chicken genome (The Sequencing Centre, Washington University, St Louis) using TBLASTN [31]. Two contigs, accession numbers AADN01050916 and AADN01050915, demonstrated a high degree of similarity to the murine protein sequence. The contigs were analysed *in silico* in order to predict the chicken *MLPH* gene sequence using homology and gene prediction programs, primarily GENSCAN [32], to yield a sequence containing the full-length coding region of the chicken melanophilin. The predicted mRNA sequence and genomic structure were used to design primers for DNA and cDNA amplification to verify the sequence (all primer sequences are shown in Table 2). All primer pairs used in these experiments were designed using Primer3 [33]. The final mRNA sequences were verified and submitted to EMBL (EU007437-40).

#### Tissue samples

Four informative families were produced for pedigree analysis at the experimental facilities of the Institut National de la Recherche Agronomique (INRA), located in Nouzilly, by mating two homozygous *lavender* (*LAV\*L/LAV\*L*) sires to four heterozygous (*LAV\*L/LAV\*N*) dams. In total, ten progeny were scored for the homozygous presence of the *LAV\*L* allele, along with seven heterozygote individuals at the *LAV* locus that displayed undiluted black plumage colour, due to their *extended black* background. These samples were used in the PCR-RFLP analysis.

A further 75 birds were also produced from the INRA flock's *lavender* line. The full *MLPH* coding sequence from 15 of the *lavender* birds and 14 of the heterozygotes produced from some of these breedings were sequenced in





**Figure 6**  
**Pedigree of a lavender allele family.** Segregation of the putative  $^{103}T$  lavender allele in crosses between two homozygous lavender sires, A) 5355 and B) 5394, and four heterozygous dams, A) 5368, 5372 and B) 5363, 5385, is consistent with the lavender phenotype. Males are denoted by squares, and females by circles. Lavender ( $LAV^*L$ ) and wild-type ( $LAV^*N$ ) haplotypes are indicated as solid black and solid white symbols, respectively.

their entirety. The rest, a mixture of  $LAV^*L/LAV^*L$  and  $LAV^*N/LAV^*L$ , were analysed by PCR-RFLP only.

One hundred and fifty progeny, homozygous for the wild type  $LAV^*N$  allele, were produced from several different breeds within the INRA flock, displaying a range of different, but undiluted, plumage phenotypes. 65 of these were used for sequencing, while the rest were tested for the absence of the lavender allele by PCR-RFLP.

Five chickens with the lavender phenotype were also sourced from two alternative farms in the UK and used for the PCR-RFLP analysis.

Dorsal skin tissue containing developing feather follicles was collected from embryos that had been incubated together until egg day 14 or 17, dependent on the particular breed. In the case of adult tissue samples, feathers were plucked from a patch on the dorsal surface of each bird to induce synchronised follicle development and then the birds were sacrificed 2 weeks later. All tissue samples were immediately submersed in RNAlater and stored at  $-20^{\circ}C$ . In the case of adults, other tissues (liver, muscle, kidney, heart, lung, testis, spleen, brain, and ovary) were also collected at the same time and stored in a similar way to the skin samples.

**Table 2: Primer sequences.**

Name	Position	Direction	Sequence 5'-3'
ML5'-1	5'-UTR	Forward	GACTGCCCGTGGCCCCATTATTTG
ML1F	5'-UTR	Forward	GCTTTAAGACCGGTTGGATCTAC
SJ93	Exon 1	Forward	GGGGAGGAAGCTGGATCTCTC
RACE4F	Exon 1	Forward	ATGGGGAGGAAGCTGGATCTCTCCAAG
RACE2R	Exon 1	Reverse	ACCTCCCAGACATGCTTGGCCTCCTC
RFLP-F1	Intron 1	Reverse	ACACTGACACAGCTGATAACATCAC
MV2R	Exon 2	Forward	GAAGTGCAAGATAGACCAGGAAAG
RACE1R	Exon 2	Reverse	GCTTGCTGTTGAGCAGGAACCTGAAGG
MV18F	Exon 3	Forward	GAAGGGGAATTCAGCTCTTCTAGG
ML14F	Exon 5-6	Forward	CAGAGTGCTACAGCAGAATGC
BlotE91F	Exon 8-9	Forward	CTCGGGAAGTCAGATTCATGAGC
ML3R	Exon 10	Reverse	CTTTCTCTTCAACTCCTCCTCCTC
ML16F	Exon 12	Forward	GTCTACCTGACTGCTGGGAAGG
RACE5F	Exon 15	Forward	GCCACAGGTCCTCAGGAGGAGGTTTC
MV8R	Exon 16	Forward	ATGACTCCTTTGACCCGCAACTC
MV6F	Exon 17	Reverse	AGGACAGGTGGGTCATCACTG
ML15R	Exon 17	Reverse	CTCAGGACAGGTGGGTCATCACTG
ML3'-1	3'-UTR	Reverse	GATGAGGCAGGGTGGCAGGACCAG

Only base pair position 103, causing the R35W substitution, was shared by all the *lavender* phenotypes studied and those that were expected to be heterozygous at this locus.

### Isolation of total RNA

Up to 100 mg tissue in RNAlater (Ambion, Austin, TX, USA) was homogenised in TRIzol (Invitrogen, Paisley, UK) using a TissueLyser (Qiagen, Crawley, UK). Total RNA was isolated according to the manufacturer's protocol (Invitrogen). RNA quality and quantity were evaluated with the RNA 6000 Nano LabChip kit on the Agilent 2100 Bioanalyzer (Agilent Technologies, South Queensferry, UK) and then stored at -80°C. Subsequent DNA extractions were also carried out using the normal TRIzol protocol.

### Reverse transcription PCR and 5'-/3'-RACE

All RT-PCR reactions were performed on cDNA synthesised from 2 µg of RNA using the RETROscript kit (Ambion), according to the manufacturer's protocol, using oligo-dT in a 20-µl reaction volume. Amplification reactions followed standard PCR protocols in a volume of 50 µl, using a 1.5-µl aliquot of the RT reaction mixture, 1.5 mM MgCl<sub>2</sub>, 0.2 mM of each dNTP, 0.04 µM each of the primers RACE4F and ML15R (Table 2), and 1.25 units Taq DNA polymerase (Bioline). PCR was initiated by denaturation for 2 minutes at 94°C, followed by 35 cycles consisting of 30 seconds at 94°C, 1 minute at 64°C and 3 minutes at 72°C, and completed by a final extension of 5 minutes at 72°C. Twenty microlitres of the amplification product was visualised on a 1.5% agarose-TAE gel stained with ethidium bromide.

To determine the 5'- and 3'-regions, 5' and 3' RACE was performed using the SMART RACE cDNA Amplification

Kit (Clontech) according to the manufacturer's instructions, with 1 µg of total RNA from chicken using the primers RACE1R, RACE2R, RACE5F and MV8R (Table 2); the products were then separated by agarose gel electrophoresis, gel purified, cloned and sequenced.

### Sequencing and subcloning

PCR products were directly sequenced, and also following cloning, on an Applied Biosystems (ABI) model 3730 DNA sequencer (ABI, Warrington, UK) and the sequencing reactions were carried out using BigDye Terminator v1.1 Cycle Sequencing kit (ABI) under the following conditions: 26 cycles of 94°C for 20 seconds, 52°C for 20 seconds and 60°C for 4 minutes. Sequencing reactions were purified and cleaned by ethanol precipitation. The primers used for initial amplification were subsequently used for sequencing with additional internal primers (Table 2) SJ93, MV2R, MV18F, ML14F, BlotE91F, ML3R, ML16F and MV6F, allowing the whole sequence to be overlapped and confirmed on both strands.

The full coding sequence of the *MLPH* transcript, including some 5'-UTR and 3'-polyA sequence, was amplified by PCR using primers ML5'-1 and ML3'-1, and was subsequently cloned into the vector pGEM-T Easy (Promega, UK) according to the manufacturer's instructions. The plasmids were completely sequenced in both directions using the universal M13 primers (forward and reverse).

The sequences obtained were edited and aligned using ClustalW software [34] and the Proseq v.2.91 software [35], then re-edited and realigned manually.

### PCR-RFLP analysis

A fragment of genomic DNA was amplified for PCR-RFLP analysis using primers ML1F, upstream of the start codon, and RFLP-F1, in intron 1 (Table 2), using standard PCR protocols in a volume of 50 µl that included 1.5 µl of genomic DNA (100 ng/µl), 1.5 mM MgCl<sub>2</sub>, 0.2 mM of each dNTP, 0.04 µM each of primer, and 1.25 units Taq DNA polymerase (Bioline). A standard PCR program was used of 40 cycles with a 1-minute annealing step at 58 °C and a single extension step of three min at 72 °C. Ten microlitres of PCR product was digested in a standard restriction digestion protocol using the BsrBI restriction enzyme (BioLab). Twenty microlitres of the digestion product was visualized on a 1.5% agarose-TAE gel stained with ethidium bromide.

### Authors' contributions

MV carried out the majority of the molecular genetic studies and *in-silico* analysis and co-prepared the manuscript. SAF assisted with the molecular genetic work and drafted the manuscript. DG is in charge of the experimental farm at INRA, Nouzilly, and supervised the production of the birds and the sampling stages. BB participated in the association study by analysing informative families and unrelated breeds. MT-B participated in the design and coordination of the study and supplied the samples. TB conceived and led the study, and participated in its design and coordination and helped to draft and revise the manuscript. All authors read and approved the final manuscript.

### Acknowledgements

We thank colleagues at the INRA farm for raising the birds and providing skin samples and Jon Slate for statistical advice. This work was supported by a grant from the Natural Environment Research Council to TB, Nick Mundy and Vincent Cunliffe, a PhD scholarship from the Ministry of Science, Research and Technology of Iran to MV, and a Royal Society Leverhulme Trust Senior Research Fellowship to TB.

### References

- Brumbaugh JA, Chatterjee G, Hollander WF: **Adendritic melanocytes: a mutation in linkage group II of the fowl.** *J Hered* 1972, **63**:19-25.
- Mayerson PL, Brumbaugh JA: **Lavender, a chick melanocyte mutant with defective melanosome translocation: a possible role for 10 nm filaments and microfilaments but not microtubules.** *J Cell Sci* 1981, **51**:25-51.
- Mercer JA, Seperack P, Strobel MC, Copeland NG, Jenkins NA: **Novel myosin heavy chain encoded by murine dilute coat colour locus.** *Nature* 1991, **349**:709-713.
- Wilson SM, Yip R, Swing DA, O'Sullivan TN, Zhang Y, Novak K, Swank RT, Russell LB, Copeland NG, Jenkins NA: **A mutation in Rab27a causes the vesicle transport defects observed in ashen mice.** *Proc Natl Acad Sci USA* 2000, **97**:7933-7938.
- Matesic LEY, Yip R, Reuss AE, Swing DA, O'Sullivan TN, Fletcher CF, Copeland NG, Jenkins NA: **Mutations in Mlph, encoding a member of the Rab effector family, cause the melanosome transport defects observed in leaden mice.** *Proc Natl Acad Sci USA* 2001, **98**:10238-10243.
- Langford GM, Molyneux BJ: **Myosin V in the brain: mutations lead to neurological defects.** *Brain Res Rev* 1998, **28**:1-8.
- Pastural E, Barrat FJ, Dufourcq-Lagelouse R, Certain S, Sanal O, Jabado N, Seger R, Griscelli C, Fischer A, de Saint Basile G: **Griscelli disease maps to chromosome 15q21 and is associated with mutations in the myosin-Va gene.** *Nat Genet* 1997, **16**:289-292.
- Searle AG: **A lethal allele of dilute in the house mouse.** *Heredity* 1952, **6**:395-401.
- Blanche S, Caniglia M, Girault D, Landman J, Griscelli C, Fischer A: **Treatment of hemophagocytic lymphohistiocytosis with chemotherapy and bone marrow transplantation: a single-center study of 22 cases.** *Blood* 1991, **78**:51-54.
- Bahadoran P, Busca R, Chiaverini C, Westbroek W, Lambert J, Bille K, Valony G, Fukuda M, Naeyaert JM, Ortonne JP, Ballotti R: **Characterization of the molecular defects in Rab27a, caused by RAB27A missense mutations found in patients with Griscelli syndrome.** *J Biol Chem* 2003, **278**:11386-11392.
- Ménasché G, Pastural E, Feldmann J, Certain S, Ersoy F, Dupuis S, Wulffraat N, Bianchi D, Fischer A, Le Deist F, de Saint Basile G: **Mutations in RAB27A cause Griscelli syndrome associated with haemophagocytic syndrome.** *Nat Genet* 2000, **25**:173-176.
- Ménasché G, Ho CH, Sanal O, Feldmann J, Tezcan I, Ersoy F, Houdusse A, Fischer A, de Saint Basile G: **Griscelli syndrome restricted to hypopigmentation results from a melanophilin defect (GS3) or a MYO5A F-exon deletion (GS1).** *J Clin Invest* 2003, **112**:450-456.
- Hume AN, Collinson LM, Hopkins CR, Strom M, Barral DC, Bossi G, Griffiths GM, Seabra MC: **The leaden gene product is required with Rab27a to recruit myosin Va to melanosomes in melanocytes.** *Traffic* 2002, **3**:193-202.
- Provance DW, James TL, Mercer JA: **Melanophilin, the product of the leaden locus, is required for targeting of myosin-Va to melanosomes.** *Traffic* 2002, **3**:124-132.
- Strom M, Hume AN, Tarafder AK, Barkagianni E, Seabra MC: **A family of Rab27-binding proteins. Melanophilin links Rab27a and myosin Va function in melanosome transport.** *J Biol Chem* 2002, **277**:25423-25430.
- Wu XS, Rao K, Zhang H, Wang F, Sellers JR, Matesic LE, Copeland NG, Jenkins NA, Hammer JA: **Identification of an organelle receptor for myosin-Va.** *Nat Cell Biol* 2002, **4**:271-278.
- Nascimento AA, Roland JT, Gelfand VI: **Pigment cells: a model for the study of organelle transport.** *Ann Rev Cell Dev Biol* 2003, **19**:469-491.
- Prieur DJ, Collier LL: **Maltese dilution of domestic cats. A generalized cutaneous albinism lacking ocular involvement.** *J Hered* 1984, **75**:41-44.
- Ishida Y, David VA, Eizirik E, Schaffer AA, Neelam BA, Roelke ME, Hannah SS, O'Brien SJ, Menotti-Raymond M: **A homozygous single-base deletion in MLPH causes the dilute coat color phenotype in the domestic cat.** *Genomics* 2006, **88**:698-705.
- Philipp U, Hamann H, Mecklenburg L, Nishino S, Mignot E, Gunzel-Apel AR, Schmutz SM, Leeb T: **Polymorphisms within the canine MLPH gene are associated with dilute coat color in dogs.** *BMC Genet* 2005, **6**:34-49.
- Drogemuller C, Philipp U, Haase B, Gunzel-Apel A-R, Leeb T: **A non-coding melanophilin gene (MLPH) SNP at the splice donor of exon 1 represents a candidate causal mutation for coat color dilution in dogs.** *J Hered* 2007, **98**:468-473.
- Anistoroaei R, Christensen K: **Mapping of the silver gene in mink and its association with the dilution gene in dog.** *Cytogenet Genome Res* 2007, **116**:316-318.
- Minvielle F, Gourichon D, Monvoisin JL: **Testing homology of loci for two plumage colors, "lavender" and "recessive white," with chicken and Japanese quail hybrids.** *J Hered* 2002, **93**:73-76.
- Jaap RG, Milby TT: **Comparative genetics of blue plumage in poultry.** *Poult Sci* 1944, **23**:3-8.
- Levi WM: *The pigeon* Sumter, SC: Levi Publishing; 1957.
- Hollander WF, Walther PL: **Recessive "lavender" in the Muscovy duck.** *J Hered* 1962, **53**:81-3.
- Somes RG Jr: **The mottling gene, the basis of six plumage color patterns in the domestic fowl.** *Poult Sci* 1980, **59**:1370-1374.



28. Meyer W, Baumgartner G: **Embryonal feather growth in the chicken.** *J Anat* 1998, **193**:611-616.
29. Hurst LD, Williams EJB: **Covariation of GC content and the silent site substitution rate in rodents: implications for methodology and for the evolution of isochores.** *Gene* 2000, **261**:107-114.
30. Filatov DA: **ProSeq: A software for preparation and evolutionary analysis of DNA sequence data sets.** *Mol Ecol Notes* 2002, **2**:621-624.
31. **NCBI BLAST Chicken Genome Tool** [<http://www.ncbi.nlm.nih.gov/genome/seq/BlastGen/BlastGen.cgi?taxid=9031>]
32. **The New GENSCAN Web Server at MIT** [<http://genes.mit.edu/GENSCAN.html>]
33. Rozen S, Skaletsky H: **Primer3 on the WWW for general users and for biologist programmers.** *Methods Mol Biol* 2000, **132**:365-386.
34. **EMBL-EBI ClustalW Tool** [<http://www.ebi.ac.uk/clustalw/>]
35. Nadeau NJ, Burke T, Mundy NI: **Evolution of an avian pigmentation gene correlates with a measure of sexual selection.** *Proc R Soc Lond B* 2007, **274**:1807-1813.

Publish with **BioMed Central** and every scientist can read your work free of charge

*"BioMed Central will be the most significant development for disseminating the results of biomedical research in our lifetime."*

Sir Paul Nurse, Cancer Research UK

Your research papers will be:

- available free of charge to the entire biomedical community
- peer reviewed and published immediately upon acceptance
- cited in PubMed and archived on PubMed Central
- yours — you keep the copyright

Submit your manuscript here:  
[http://www.biomedcentral.com/info/publishing\\_adv.asp](http://www.biomedcentral.com/info/publishing_adv.asp)

