


RESEARCH ARTICLE

Open Access

# SMAD4 haploinsufficiency in small intestinal neuroendocrine tumors



Tobias Hofving<sup>1†</sup>, Erik Elias<sup>2†</sup>, Anna Rehammar<sup>3</sup>, Linda Inge<sup>1</sup>, Gülay Altiparmak<sup>1</sup>, Marta Persson<sup>1</sup>, Erik Kristiansson<sup>3</sup>, Martin E. Johansson<sup>1</sup>, Ola Nilsson<sup>1†</sup> and Yvonne Arvidsson<sup>1\*†</sup> 

## Abstract

**Background:** Patients with small intestinal neuroendocrine tumors (SINETs) frequently present with lymph node and liver metastases at the time of diagnosis, but the molecular changes that lead to the progression of these tumors are largely unknown. Sequencing studies have only identified recurrent point mutations at low frequencies with *CDKN1B* being the most common harboring heterozygous mutations in less than 10% of all tumors. Although SINETs are genetically stable tumors with a low frequency of point mutations and indels, they often harbor recurrent hemizygous copy number alterations (CNAs) yet the functional implications of these CNA are unclear.

**Methods:** Utilizing comparative genomic hybridization (CGH) arrays we analyzed the CNA profile of 131 SINETs from 117 patients. Two tumor suppressor genes and corresponding proteins i.e. *SMAD4*, and *CDKN1B*, were further characterized using a tissue microarray (TMA) with 846 SINETs. Immunohistochemistry (IHC) was used to quantify protein expression in TMA samples and this was correlated with chromosome number evaluated with fluorescent in-situ hybridization (FISH). Intestinal tissue from a *Smad4*<sup>+/-</sup> mouse model was used to detect entero-endocrine cell hyperplasia with IHC.

**Results:** Analyzing the CGH arrays we found loss of chromosome 18q and *SMAD4* in 71% of SINETs and that focal loss of chromosome 12 affecting the *CDKN1B* was present in 9.4% of SINETs. No homozygous loss of chromosome 18 was detected. Hemizygous loss of *SMAD4*, but not *CDKN1B*, significantly correlated with reduced protein levels but hemizygous loss of *SMAD4* did not induce entero-endocrine cell hyperplasia in the *Smad4*<sup>+/-</sup> mouse model. In addition, patients with low *SMAD4* protein expression in primary tumors more often presented with metastatic disease.

(Continued on next page)

\* Correspondence: [yvonne.arvidsson@gu.se](mailto:yvonne.arvidsson@gu.se)

<sup>†</sup>Tobias Hofving and Erik Elias contributed equally to this work as first author.

<sup>†</sup>Yvonne Arvidsson and Ola Nilsson contributed equally to this work as last author.

<sup>1</sup>Sahlgrenska Center for Cancer Research, Department of Laboratory Medicine, Institute of Biomedicine, Sahlgrenska Academy at University of Gothenburg, Box 425, SE-405 30 Gothenburg, Sweden

Full list of author information is available at the end of the article



© The Author(s). 2021 **Open Access** This article is licensed under a Creative Commons Attribution 4.0 International License, which permits use, sharing, adaptation, distribution and reproduction in any medium or format, as long as you give appropriate credit to the original author(s) and the source, provide a link to the Creative Commons licence, and indicate if changes were made. The images or other third party material in this article are included in the article's Creative Commons licence, unless indicated otherwise in a credit line to the material. If material is not included in the article's Creative Commons licence and your intended use is not permitted by statutory regulation or exceeds the permitted use, you will need to obtain permission directly from the copyright holder. To view a copy of this licence, visit <http://creativecommons.org/licenses/by/4.0/>. The Creative Commons Public Domain Dedication waiver (<http://creativecommons.org/publicdomain/zero/1.0/>) applies to the data made available in this article, unless otherwise stated in a credit line to the data.

(Continued from previous page)

**Conclusions:** Hemizygous loss of chromosome 18q and the *SMAD4* gene is the most common genetic event in SINETs and our results suggests that this could influence *SMAD4* protein expression and spread of metastases. Although *SMAD4* haploinsufficiency alone did not induce tumor initiation, loss of chromosome 18 could represent an evolutionary advantage in SINETs explaining the high prevalence of this aberration. Functional consequences of reduced *SMAD4* protein levels could hypothetically be a potential mechanism as to why loss of chromosome 18 appears to be clonally selected in SINETs.

**Keywords:** SINET, *SMAD4*, Haploinsufficiency, Chromosome 18, Tissue microarray, FISH

## Background

Gene mutations contributing to cancer development and progression are termed driver mutations. For many tumor types specific driver mutations have been determined and validated, thus describing molecular mechanisms for tumorigenesis and posing as potential targets for therapeutic interventions. Small intestinal neuroendocrine tumors (SINETs) originate from enterochromaffin (EC) cells in the small intestinal mucosa and are generally slow-growing neoplasms. Compared to many tumor types, SINETs are genetically stable with a somatic nonsynonymous mutational frequency more than 10-fold lower than that of cutaneous melanomas, squamous cell carcinomas and adenocarcinomas of the lung [1]. The stability of SINETs in terms of point mutations is further illustrated by the fact that only a few genes have been found mutated in more than one patient tumor. Among recurrently mutated genes *CDKN1B* has been reported with the highest frequency, mutated in only about 7.8–9.6% of all SINETs [2, 3]. Consequently, for a large proportion of SINETs, no apparent gene driver mutations have been identified. While recurrent point mutations have only been identified for a few genes, SINETs instead harbor several recurrent hemizygous whole chromosomal CNAs [4–6]. The classical two-hit hypothesis suggests that both alleles of a tumor suppressor should be inactivated to promote cancer development [7]. There are however several prominent examples of tumor suppressor genes that do not follow this rule. Two such genes are *PTEN* [8] and *P53* [9], which have been confirmed to be haploinsufficient, meaning that cells with one inactivated gene copy does not maintain their wild-type phenotype. The most frequently occurring genetic alteration in SINETs is hemizygous loss of chromosome 18. *SMAD4*, located on chromosome 18, a key conveyer of TGF $\beta$  signaling and found to be mutated in several types of cancer has been suggested to be haploinsufficient in mouse models [10, 11]. If *SMAD4* protein expression is linked to chromosome 18 loss this could provide an example of a mechanism by which CNAs contribute to SINET tumorigenesis in the absence of driver mutations. The overall aim of the present study was to determine if copy

number alterations of *SMAD4* and *CDKN1B* in SINETs correlate with corresponding protein expression and can be linked to tumor initiation.

## Methods

### Array comparative genomic hybridization

One hundred thirty-one fresh-frozen SINET biopsies from 117 patients including 52 biopsies from 43 patients previously published [4] were analyzed with array comparative genomic hybridization (CGH). One hundred nine of the 131 CGH analyzed biopsies were also represented on the tissue microarray used for immunohistochemistry and FISH. The purity of tumor biopsies was assessed by light microscopy using hematoxylin and eosin stained sections, and only biopsies with at least 70% tumor cells were analyzed. Genomic DNA was isolated from the biopsies using the DNeasy® Blood and Tissue kit (Qiagen GmbH, Hilden, Germany). The array CGH experiments, including labelling and hybridization of DNA were performed as previously described and according to the manufacturer's protocol (SureTag DNA Labeling Kit; Agilent Technologies Inc., Palo Alto, CA, USA) [4]. Array CGH analysis was performed using the human genome CGH microarray 4x44K (G4410B/G4426A/G4426B), 2x400K (G4448A), 244 K (G4411B) and CGH-SNP microarray 4x180K (G4890A) (Agilent Technologies Inc.). The probes were annotated against genome build UCSC hg19. Hybridized slides were scanned on an Agilent High-Resolution Microarray Scanner followed by data extraction and normalization using Feature Extraction v.4.0.1.21 (protocol CytoCGH\_0209\_1x or 2x or 4x\_Mar14) (Agilent Technologies). Data analysis was carried out using Agilent CytoGenomics 4.0.3.12 (Agilent Technologies Inc.). The ADM-2 (threshold = 6.0) algorithm was used to identify copy number aberrations across the genome. A  $\log^2$  ratio of  $\pm 0.25$  and CNAs  $\geq 500$  kb was considered as a gain or loss. A  $\log^2$  ratio of  $> 2$  was designated as high-level amplification and a  $\log^2$  ratio of  $< -2$  was designated as homozygous loss. Chromosome arm gains/losses were determined using a 70% length threshold. The aberrations were checked manually to confirm the accuracy of the calls. Known recurrent germline copy number variations

(Agilent female/male CNV reference) were excluded from the analysis.

#### Whole exome sequencing

DNA from 9 fresh-frozen tumors and their corresponding normal samples (small intestine, muscle, adipose tissue) were extracted using QIAamp DNA mini kit (Qiagen) and sequencing libraries were prepared using the SureSelect All Exon v3 target enrichment kit (Agilent Technologies, CA). The libraries were sequenced on an Illumina HiSeq 2000 in paired end mode with read length 100 bp. After quality trimming using PRINSEQ [12], the reads were aligned to the human reference genome (hg19) using the BWA-MEM algorithm (<http://bio-bwa.sourceforge.net/>). Marking of duplicates and base recalibration was performed with Picard (<https://broadinstitute.github.io/picard/>) and GATK [13], respectively. Single nucleotide variants and small insertions and deletions were called for the *SMAD4* and *CDKN1B* genes using HaploTYPECaller (germline variants) and Mutect2 (somatic variants), as implemented in GATK v4.0.8. Only germline variants with a quality normalized by depth above five, and somatic variants annotated as PASS, were considered. Additionally, variants were required to have a population frequency below 0.10 in the 1000 Genome project.

#### Tissue microarray (TMA)

The tissue microarray contained 846 tumor biopsies from 412 patients retrieved from patients who underwent surgery for SINET at Sahlgrenska University Hospital in the years 1986 to 2013. Details of the construction of the tissue microarray have previously been described [14]. The diagnosis of all tumors was re-validated by staining all tumors for hematoxylin and eosin, synaptophysin and chromogranin A, and reviewed by board-certified pathologist (O.N.).

#### Immunohistochemistry of TMA and *Smad4*<sup>+/-</sup> mice

Immunohistochemistry was performed on SINET TMAs and on gastrointestinal tissue including duodenum, jejunum, ileum from wild-type *Smad4*<sup>+/+</sup> and *Smad4*<sup>+/-</sup> mice. The *Smad4*<sup>+/-</sup> mice were derived from F5-F8 backcross generations to C57BL/6 of the original F1 129Ola/C57BL/6Jico SMAD4<sup>+/<sup>E6sad</sup> founder [15] and was kindly donated by Professor Riccardo Fodde. Sections (3–4 μm) from formalin-fixed and paraffin-embedded blocks were placed on glass slides and treated in Dako PT-Link using EnVision™ FLEX Target Retrieval Solution (high pH). The following primary antibodies were used: anti-SMAD4 (B-8, Santa Cruz), anti-p27 (DCS-72.F6, Abcam), anti-chromogranin A (PHE5, Chemicon and EP1030Y,</sup>

Abcam), anti-synaptophysin (SP11, Abcam), anti-5HT (H209, Dako and LS-B7118, LSBio), and anti-Ki67 (MIB1; Dako). Immunohistochemical staining was performed in a Dako Autostainer Link using EnVision™ FLEX according to the manufacturer's instructions (DakoCytomation). EnVision™ FLEX+ (LINKER) rabbit or mouse was used for all stainings. Positive and negative controls were included in each run. The fraction of Ki67-positive cells was estimated by manually counting 500–2000 tumor cells per sample, using printouts. For relative quantification of SMAD4 and CDKN1B expression, the total global staining intensity of tumor cells was assessed, meaning localized subcellular i.e. nuclear or cytoplasmic staining intensity was not individually evaluated. A board-certified pathologist (O.N.) examined the TMA tissue samples using a light microscope with a 4× objective until samples could with a high degree of repeatability be subcategorized as either 'None', 'Low', or 'High'.

#### Fluorescence in situ hybridization

Fluorescence in situ hybridization (FISH) was performed on 4 μm paraffin sections from the tissue microarray using dual-color fluorescent probes for *SMAD4* and chromosome 18 centromeric region or *CDKN1B* and chromosome 12 centromeric region (FA0590, FA0305, Abnova). Pre-processing of paraffin sections, hybridization to the probe, post-hybridization washing and fluorescence detection were performed according to manufacturer's instructions (Abnova). Tumors were examined using an Axioplan 2i epifluorescence microscope (Zeiss, Oberkochen, Germany). Within each section, normal regions/stromal elements served as the internal control to assess quality of hybridization. Cases were scored with using a 100× objective lens, counting at least three distinct areas and at least 30 discrete nuclei per area. Labeled nuclei were imaged using an LSM 780 confocal microscope (Zeiss, Oberkochen, Germany). Brightness/contrast adjustments, scale bar, and image type transformation were performed using ZEN 3.1.

#### Statistical analysis

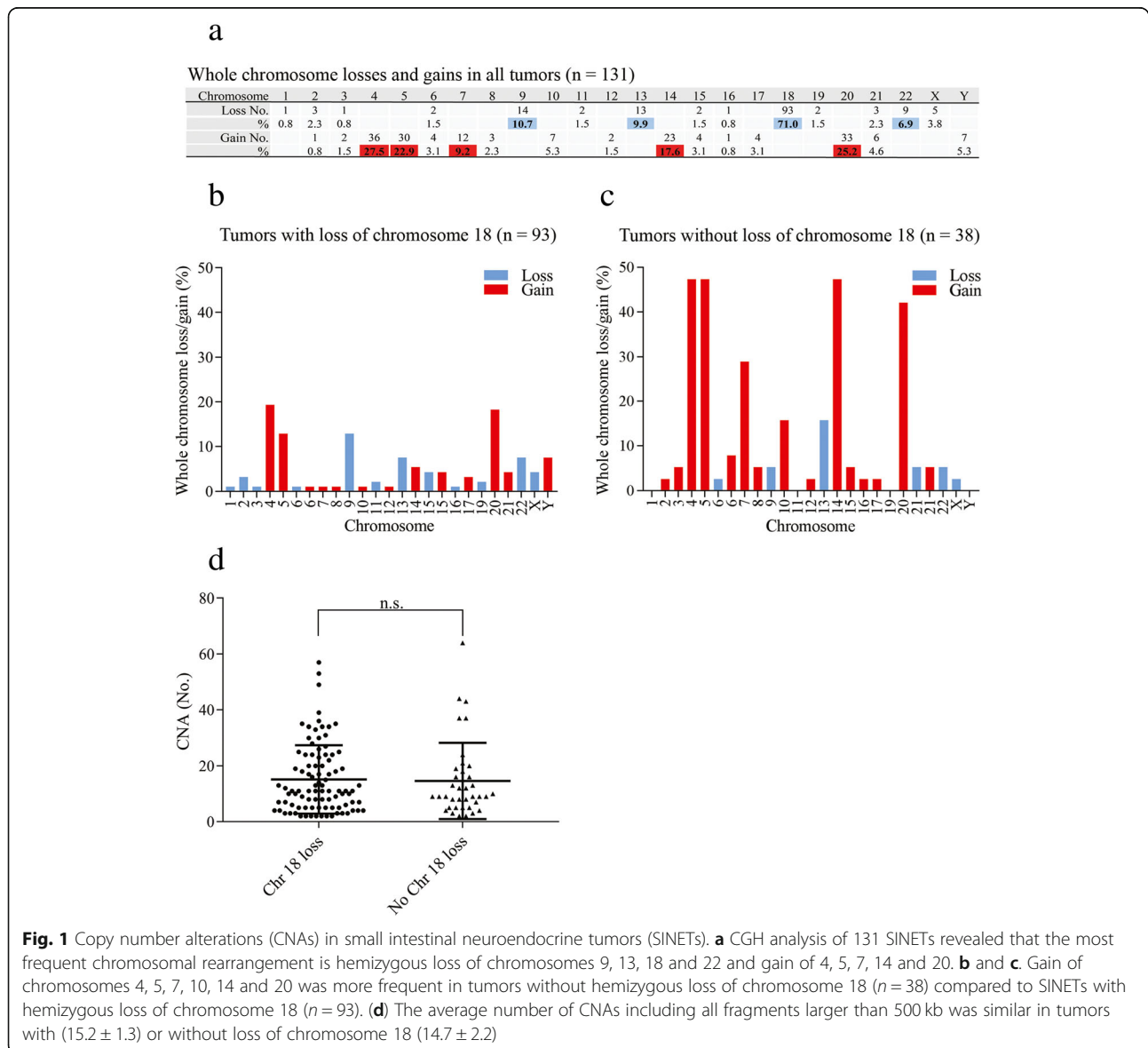
Correlation between protein expression and copy number status was estimated with Spearman's rank correlation coefficient. Comparison of the number of CgA-positive cells in the small intestinal crypts and crypt bases between *Smad4*<sup>+/-</sup> and *Smad4*<sup>+/+</sup> mice was performed using unpaired two-sided Student's t-test. Comparison of SMAD4 expression between tumor sites and patient disease stages was tested with Mann Whitney U-test.

**Results**

**Hemizygous loss of chromosome 18 is the most frequent chromosomal aberration in SINETs**

To investigate and outline recurrent CNAs in SINETs, we performed copy number analysis on 131 SINETs from 117 patients, currently the largest investigated SINET patient cohort. The most frequent CNA was hemizygous loss of chromosome 18 (71%), consistent with previous reports [4, 6] (Fig.1a). Tumors with loss of chromosome 18 and without loss of chromosome 18 differed in the type of harbored chromosomal alterations. Tumors with loss of chromosome 18 had both fewer gains of whole chromosomes as well as more losses of whole chromosomes compared to tumors without loss of chromosome 18 (Fig. 1b, c). Some specific chromosomes, including

chromosomes 4, 5, 7, 14, and 20, were more frequently gained in tumors without chromosome 18. CNAs larger than 500 kb were present in all biopsies and there was no significant difference in number of CNAs in SINETs with loss of chromosome 18 ( $15.2 \pm 1.3$ ,  $N = 93$ ) compared to SINETs without loss of chromosome 18 ( $14.7 \pm 2.2$ ,  $N = 38$ ) (Fig. 1d). The CNA analysis did not detect any homozygous deletion of *SMAD4* gene despite the high frequency of hemizygous loss of chromosome 18. *CDKN1B* is located on chromosome 12 and in contrast to chromosome 18, whole chromosome 12 was never lost, but rather harbored focal events. Among the 117 analyzed patients, 11 tumors (9.4%) had loss of the *CDKN1B* gene. The most frequently lost region that included the *CDKN1B* gene was chr12: 11,139,390–



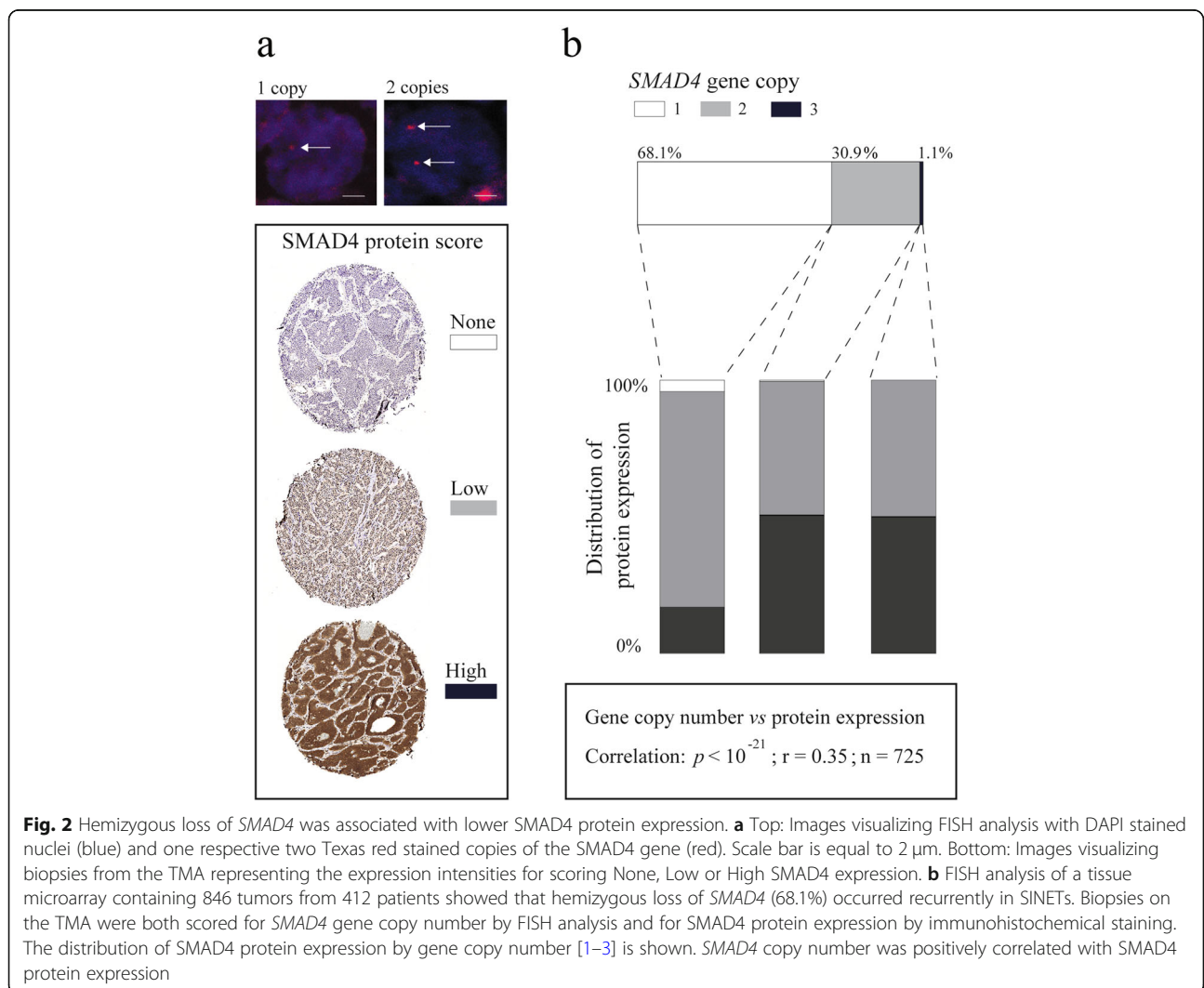
**Fig. 1** Copy number alterations (CNAs) in small intestinal neuroendocrine tumors (SINETs). **a** CGH analysis of 131 SINETs revealed that the most frequent chromosomal rearrangement is hemizygous loss of chromosomes 9, 13, 18 and 22 and gain of 4, 5, 7, 14 and 20. **b** and **c**. Gain of chromosomes 4, 5, 7, 10, 14 and 20 was more frequent in tumors without hemizygous loss of chromosome 18 ( $n = 38$ ) compared to SINETs with hemizygous loss of chromosome 18 ( $n = 93$ ). **d** The average number of CNAs including all fragments larger than 500 kb was similar in tumors with ( $15.2 \pm 1.3$ ) or without loss of chromosome 18 ( $14.7 \pm 2.2$ )

12,874,937 which contained 28 genes (Suppl. Fig. 1A–B). In an attempt to identify potential ‘second-hit’ mutations in tumors with loss of *SMAD4* and *CDKN1B* we performed whole exome-sequencing of 9 SINETs and their corresponding normal samples. These 9 tumors were also included in the copy number analysis and 7 tumors had loss of chromosome 18 while none had loss of the *CDKN1B* gene. The sequencing analysis revealed that for these 9 patients no germline or somatic mutations were found neither in the *SMAD4* gene nor the *CDKN1B* gene.

**Hemizygous loss of *SMAD4* leads to lower *SMAD4* protein levels**

We investigated the *SMAD4* and *CDKN1B* gene copy number status in 739 and 689 tumors from 373 and 359 patients respectively using fluorescence in situ hybridization (FISH) on tissue microarrays. As

expected, loss of *SMAD4* was frequent with 497/739 tumors (68.1%) having one remaining *SMAD4* copy (Fig. 2a). Gains were rare with only 8/739 tumors (1.1%) harboring three *SMAD4* copies. Loss of *CDKN1B* was less frequent compared to *SMAD4* loss, with 45/689 (6.8%) tumors having one copy (Suppl. Fig. 2). *CDKN1B* gains were also infrequent with 13/689 tumors (1.9%) harboring three gene copies. To investigate if *SMAD4* and *CDKN1B* act as haploinsufficient genes in SINETs we assessed whether hemizygous loss leads to decreased amounts of corresponding protein levels. Using immunohistochemistry and FISH, we evaluated the protein staining intensity of *SMAD4* and p27 in relation to gene copy number status on consecutive tumor sections. We found that *SMAD4* copy number status had a highly significant correlation to *SMAD4* protein staining intensity (Fig. 2b). The number of *CDKN1B* gene copies did however not correlate with the



**Fig. 2** Hemizygous loss of *SMAD4* was associated with lower *SMAD4* protein expression. **a** Top: Images visualizing FISH analysis with DAPI stained nuclei (blue) and one respective two Texas red stained copies of the *SMAD4* gene (red). Scale bar is equal to 2  $\mu$ m. Bottom: Images visualizing biopsies from the TMA representing the expression intensities for scoring None, Low or High *SMAD4* expression. **b** FISH analysis of a tissue microarray containing 846 tumors from 412 patients showed that hemizygous loss of *SMAD4* (68.1%) occurred recurrently in SINETs. Biopsies on the TMA were both scored for *SMAD4* gene copy number by FISH analysis and for *SMAD4* protein expression by immunohistochemical staining. The distribution of *SMAD4* protein expression by gene copy number [1–3] is shown. *SMAD4* copy number was positively correlated with *SMAD4* protein expression



expression of its corresponding protein, p27 (Suppl. Fig. 2).

### Heterozygous inactivation of *Smad4* is not sufficient to induce hyperplasia in enteroendocrine cells

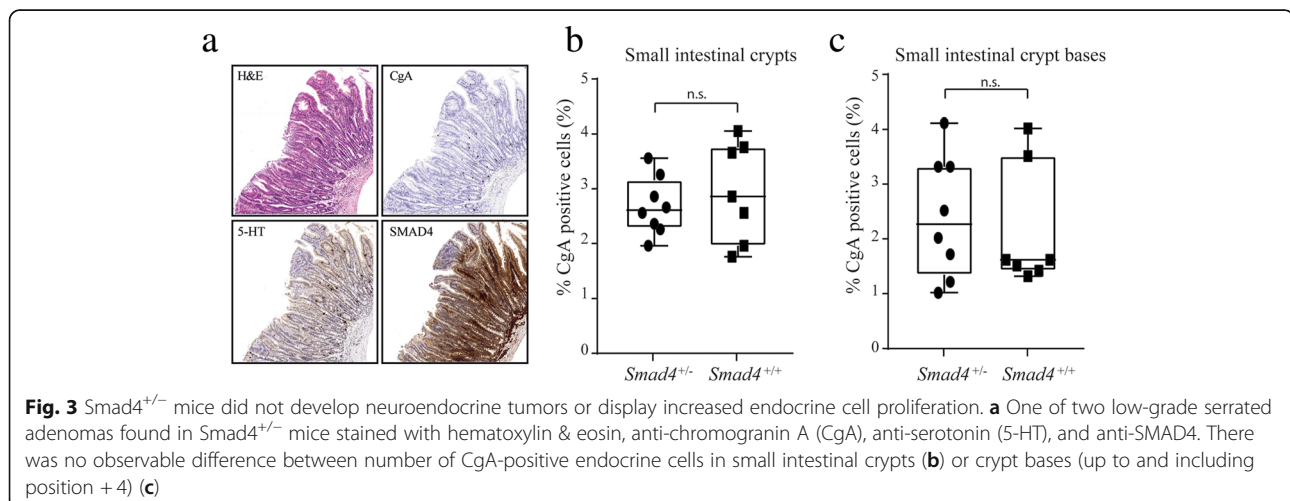
To investigate if heterozygous *Smad4* inactivation could induce SINET tumorigenesis in mice we used *Smad4*<sup>+/-</sup> genetic mice. These mice spontaneously develop polyps and adenocarcinomas in the gastrointestinal tract [10, 11, 15]. In our analysis we focused on chromogranin A (CgA)-positive endocrine cells of the small intestine. Paraffin-embedded small intestinal tissue samples from the mice were stained with eosin & hematoxylin, chromogranin A, and serotonin, and were evaluated by board-certified pathologist (O.N.) for presence of tumors. In 2/8 heterozygous mice adenomas with low-grade dysplasia was observed. One sample had a serrated adenoma located in the duodenum and one sample had two early adenomas with low-grade dysplasia (Fig. 3a). No tumors of endocrine origin were observed. In an attempt to identify early stages of hyperplasia, we quantified the number of CgA-positive endocrine cells of the intestinal crypts. We did not observe any differences in the number of CgA-positive cells in the small intestine of *Smad4*<sup>+/-</sup> and *Smad4* wildtype mice (Fig. 3b). Previous studies have suggested that SINETs originate from CgA-positive cells in the epithelium at the base of the intestinal crypts [16]. We thus also quantified the number of CgA-positive cells located specifically at the bottom of the intestinal crypts (up to and including position +4), but did again not observe any significant difference between the two genotypes (Fig. 3c). This suggests that heterozygous inactivation of *Smad4* in the mouse intestine is not alone sufficient to sustain or drive endocrine cell proliferation.

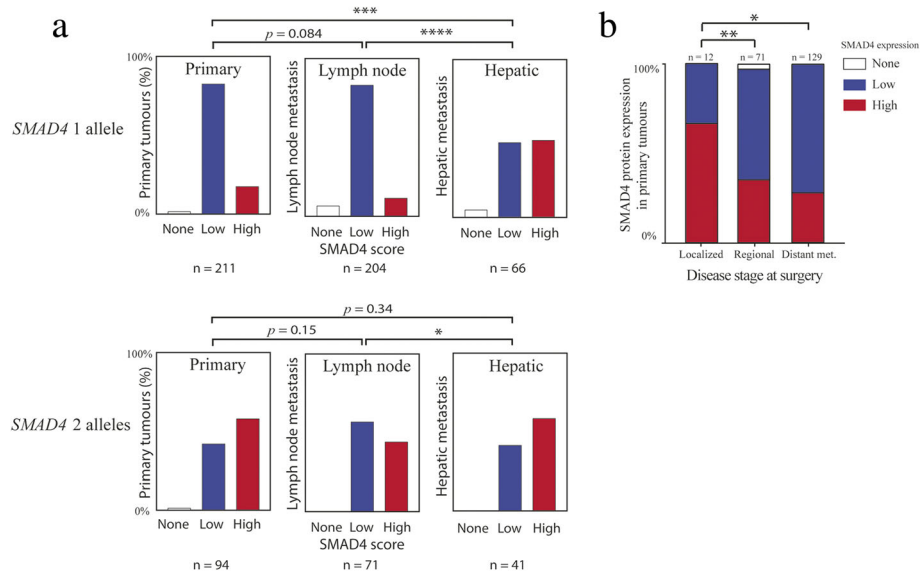
### Patients with lower SMAD4 expression in primary tumors more frequently present with metastases

The SMAD4 protein expression also differed between tumor sites. In tumors with only one *SMAD4* copy, SMAD4 protein expression was lowest in primary tumors and lymph node metastasis, while hepatic metastases showed a higher SMAD4 protein expression (Fig. 4a). For tumors with two *SMAD4* alleles there was only a significant difference between lymph node metastasis and hepatic metastasis. We also investigated whether SMAD4 protein expression of the primary tumors could predict if the patient presented with distant metastases at the time of surgery. SINET patients are typically staged into disease stages I, IIA, IIB (localized disease with varying tumor invasion), IIIB (tumors with any regional lymph node metastasis), and IV (tumors with any distant metastasis). We found that patients with lower SMAD4 levels in the primary tumor had more often metastasized to regional lymph nodes and distant parts of the body at the time of initial surgery (Fig. 4b). Finally, there was no correlation between Ki67 index and expression of SMAD4 (Suppl. Fig. 3).

### Discussion

Loss and gain of chromosomes, or aneuploidy, is believed to be of importance in tumor development. Although most whole-chromosome or chromosome arm imbalances lead to lower cell fitness when introduced in an experimental setting [17], they are frequently tolerated in cancer cells and about 88% of all cancer types harbor such events [18]. In fact, a solid tumor on average harbors about 3 gains and 5 losses at the chromosomal arm-level [19, 20]. The highly recurrent character of SINET copy number changes suggests that these changes are clonally selected within tumors. Even though aneuploidy in cancer is a common genetic event, due to its complexity, the functional implications are not





**Fig. 4** SMAD4 expression varied by tumor site and lower SMAD4 expression in the primary tumor correlated with the patient presenting with metastasis at the time of surgery. **a** Immunohistochemical staining of the SINET tissue microarray revealed that low expression of SMAD4 was more frequent in both primary tumors and lymph node metastases compared to hepatic metastases for tumors with one *SMAD4* copy. **b** Comparing SMAD4 protein expression in the primary tumor between patients with localized disease (stage I, IIA, and IIB), lymph node metastases (stage IIIB), and distant metastases (stage IV) showed that patients with low SMAD4 protein expression in the primary tumors more often presented with metastatic disease. Asterisks indicate statistically significant changes (Mann Whitney U-test): \*  $p < 0.05$ , \*\*  $p < 0.01$ , \*\*\*  $p < 0.001$ , \*\*\*\*  $p < 0.0001$

as well-characterized as specific point mutations. A basic mechanism by which chromosomal alterations could affect the phenotypical characteristics of a cell is through gene dosage, i.e. the number of gene copies influence corresponding protein expression levels.

Initially, we analyzed 131 tumors from 117 patients for chromosomal aberrations confirming hemizygous loss at chromosome 18 as the most common genetic event in our SINET cohort. We also found that losses of chromosomes 9, 13, 18, and 22 and gains of chromosomes 4, 5, 7, 10, 14, and 20 regularly occurred. Chromosome 18 contains the gene encoding the SMAD4 protein that mediates TGFβ signaling and the *SMAD4* gene is frequently mutated in several types of malignant tumors resulting in altered TGFβ signaling and thereby promoting tumor progression and metastatic capacity [21, 22]. We therefore investigated the association between chromosome 18 copies and SMAD4 protein expression in a large SINET cohort. We observed a significant correlation between gene copy numbers and protein expression levels for SMAD4 consistent with a gene dosage mechanism. We also performed a similar analysis of the *CDKN1B* gene located on chromosome 12. As previously mentioned, *CDKN1B* is the most commonly mutated gene in SINETs, albeit at a low frequency. As we observed several segmental losses on chromosome 12 affecting the *CDKN1B* gene we therefore hypothesized that hemizygous loss could result in a lower expression of the p27

protein, suggesting that alterations to *CDKN1B* affected a greater proportion of SINETs and not only those harboring mutations. However, we could not see a similar association between gene copy numbers and protein expression levels for p27 in the SINET samples arguing against a gene dosage mechanism in this context.

Although the functional consequences of reduced SMAD4 protein levels in SINET are unclear, *SMAD4* mutations in other types of cancers shift signaling by TGFβ from growth inhibiting to cancer promoting [21]. Accordingly, based on the lack of TGFβ binding protein (LTBP), Chaudry et al. has speculated that midgut carcinoids are insensitive to TGFβ growth inhibitory effect [23]. For tumor cells to metastasize they need to go through a series of changes, including loss of cell polarity and dependence on cell-cell interactions, termed epithelial to mesenchymal transition (EMT). *SMAD4* inactivation can lead to an accumulation of nuclear-β-catenin resulting in overexpression of β-catenin target genes, promoting EMT and thus metastasis [22, 24]. In this light, our finding that decreased SMAD4 expression in primary tumors was associated with the patient presenting with disseminated disease may indicate that this is an important mechanism also for SINETs. The discrepancy in SMAD4 protein expression between tumor sites could i.e. be explained by differing tissue environment conditions and/or genetic intratumoral heterogeneity between primary and metastatic tumors observed in

SINETs [25]. Therefore, further mechanistic studies focused on the effects of disrupted TGF $\beta$ -signaling and SINET metastatic capacity could represent a promising future research direction.

Germline mutations in *SMAD4* can lead to juvenile polyposis syndrome (JPS), characterized by benign tumor formation in the gastrointestinal tract and an increased risk of gastrointestinal malignancies. Interestingly, homozygous inactivation is not required for malignant transformation of JPS-related gastro-enteral polyps [26] suggesting gene dosage as a possible mechanism. Among cancer diseases with the highest *SMAD4* alteration frequency are colorectal cancer, pancreatic cancer, esophageal cancer, and gastric cancer, all originating in the GI tract (<https://www.cancer.gov/tcga>) [27]. Also for sporadic small intestinal adenocarcinomas, not included in most large pan-cancer data-sets, *SMAD4* has been suggested to have a critical role [28].

To determine the effect of heterozygous loss of *SMAD4* on entero-endocrine cell proliferation we quantified intestinal neuroendocrine cells in tissue samples from a genetic mouse model harboring a *Smad4*<sup>+/-</sup> genotype. We did not detect a higher frequency of enteroendocrine cells in the intestinal crypts or find any sign of enteroendocrine hyperplasia in the *Smad4*<sup>+/-</sup> mice compared to wild-type mice. We suggest that our findings could indicate that loss of chromosome 18 is not a tumor initiating event but rather represents an early evolutionary advantage during tumor progression. Interestingly, in addition to allelic loss of *SMAD4*, the genes *BCL2*, *CDH19*, *DCC* have also been reported as potential candidate haploinsufficient genes and gains of oncogene *SRC* located on chromosome 20 has previously been found to correlate with a poorer prognosis [3]. Thus, further explorations regarding the effects of haploinsufficiency and SINET could provide important insights regarding the SINET tumor biology.

## Conclusions

In summary, *SMAD4* copy number correlated with corresponding protein expression in a haploinsufficient manner. The findings in this study suggest that copy number alterations in SINET can affect protein expression of known oncogenes and CNA induced gene-dosage could represent a novel mechanism regarding SINET biology. Further research regarding functional implications of reduced *SMAD4* expression in SINETs is warranted.

## Supplementary Information

The online version contains supplementary material available at <https://doi.org/10.1186/s12885-021-07786-9>.

Additional file 1.

Additional file 2.

Additional file 3.

## Abbreviations

CDKN1B: Cyclin-dependent kinase inhibitor; CNA: Hemizygous copy number alteration; EC: Enterochromaffin; FISH: Fluorescence in situ hybridization; PTEN: Phosphatase and tensin homolog; SINETs: Small intestinal neuroendocrine tumors; *SMAD4*: *SMAD* family member 4; TMA: Tissue microarray

## Acknowledgements

We would like to acknowledge Professor Göran Stenman for the use of the FISH analysis facility, as well as the Centre for Cellular Imaging at the University of Gothenburg and the National Microscopy Infrastructure, NMI (VR-RFI 2016-00968) for providing assistance in microscopy.

## Authors' contributions

TH, EE, ON and YA contributed to the design of the study. TH, EE, AR, LI, GA, MP, EK, MEJ, ON and YA carried out, analyzed and interpreted the data. TH, EE and YA drafted the manuscript. All authors revised the manuscript critically for intellectual content and have read and approved the final manuscript.

## Funding

This study was supported by grant from the Swedish Cancer Society, the Assar Gabrielsson Research Foundation, the Sahlgrenska University Hospital Funds, the BioCARE National Strategic Research Program, and the Swedish state under the agreement between the Swedish government and the county councils, the ALF-agreement (ALFGBG-725101). The grants covered the costs for salaries and experimental expenses required for the study.

## Availability of data and materials

The datasets are available according to the MIAME standard at the Gene Express Omnibus database (<https://www.ncbi.nlm.nih.gov/geo/>) with accession number GSE153314.

## Ethics approval and consent to participate

Each patient was fully informed of the investigational nature of this study and provided their written, informed consent. We obtained approval from Regional Ethical Review Boards in Gothenburg, Sweden, for the use of tumor material and clinical data for research purposes.

## Consent for publication

Not applicable.

## Competing interests

The authors declare that they have no competing interests.

## Author details

<sup>1</sup>Sahlgrenska Center for Cancer Research, Department of Laboratory Medicine, Institute of Biomedicine, Sahlgrenska Academy at University of Gothenburg, Box 425, SE-405 30 Gothenburg, Sweden. <sup>2</sup>Department of Surgery, Institute of Clinical Sciences, Sahlgrenska Academy at University of Gothenburg, Gothenburg, Sweden. <sup>3</sup>Department of Mathematical Sciences, Chalmers University of Technology and University of Gothenburg, Gothenburg, Sweden.

Received: 29 June 2020 Accepted: 2 January 2021

Published online: 28 January 2021

## References

- Lawrence MS, Stojanov P, Polak P, Kryukov GV, Cibulskis K, Sivachenko A, et al. Mutational heterogeneity in cancer and the search for new cancer-associated genes. *Nature*. 2013;499:214.
- Francis JM, Kiezun A, Ramos AH, Serra S, Pedamallu CS, Qian ZR, et al. Somatic mutation of *CDKN1B* in small intestine neuroendocrine tumors. *Nat Genet*. 2013;45(12):1483–6.
- Simbolo M, Vicentini C, Mafficini A, Fassan M, Pedron S, Corbo V, et al. Mutational and copy number asset of primary sporadic neuroendocrine tumors of the small intestine. *Virchows Arch*. 2018;473(6):709–17.



4. Andersson E, Swärd C, Stenman G, Ahlman H, Nilsson O. High-resolution genomic profiling reveals gain of chromosome 14 as a predictor of poor outcome in ileal carcinoids. *Endocr Relat Cancer*. 2009;16(3):953–66.
5. Karpathakis A, Dibra H, Pipinikas C, Feber A, Morris T, Francis J, et al. Prognostic impact of novel molecular subtypes of small intestinal neuroendocrine tumor. *Clin Cancer Res*. 2016;22(1):250–8.
6. Kulke MH, Freed E, Chiang DY, Philips J, Zahrieh D, Glickman JN, et al. High-resolution analysis of genetic alterations in small bowel carcinoid tumors reveals areas of recurrent amplification and loss. *Genes Chromosomes Cancer*. 2008;47(7):591–603.
7. Knudson AG Jr. Mutation and cancer: statistical study of retinoblastoma. *Proc Natl Acad Sci U S A*. 1971;68(4):820–3.
8. Podsypanina K, Ellenson LH, Nemes A, Gu J, Tamura M, Yamada KM, et al. Mutation of Pten/Mmac1 in mice causes neoplasia in multiple organ systems. *Proc Natl Acad Sci U S A*. 1999;96(4):1563–8.
9. Venkatachalam S, Shi YP, Jones SN, Vogel H, Bradley A, Pinkel D, et al. Retention of wild-type p53 in tumors from p53 heterozygous mice: reduction of p53 dosage can promote cancer formation. *EMBO J*. 1998;17(16):4657–67.
10. Alberici P, Gaspar C, Franken P, Gorski MM, de Vries I, Scott RJ, et al. Smad4 haploinsufficiency: a matter of dosage. *PathoGenetics*. 2008;1(1):2.
11. Alberici P, Jagmohan-Changur S, De Pater E, Van Der Valk M, Smits R, Hohenstein P, et al. Smad4 haploinsufficiency in mouse models for intestinal cancer. *Oncogene*. 2006;25(13):1841–51.
12. Schmieder R, Edwards R. Quality control and preprocessing of metagenomic datasets. *Bioinformatics*. 2011;27(6):863–4.
13. DePristo MA, Banks E, Poplin R, Garimella KV, Maguire JR, Hartl C, et al. A framework for variation discovery and genotyping using next-generation DNA sequencing data. *Nat Genet*. 2011;43(5):491–8.
14. Arvidsson Y, Rehammar A, Bergström A, Andersson E, Altiparmak G, Swärd C, et al. miRNA profiling of small intestinal neuroendocrine tumors defines novel molecular subtypes and identifies miR-375 as a biomarker of patient survival. *Modern Pathol*. 2018;31(8):1302–17.
15. Hohenstein P, Molenaar L, Elsinga J, Morreau H, van der Klift H, Struijk A, et al. Serrated adenomas and mixed polyposis caused by a splice acceptor deletion in the mouse Smad4 gene. *Genes Chromosomes Cancer*. 2003;36(3):273–82.
16. Sei Y, Feng J, Zhao X, Forbes J, Tang D, Nagashima K, et al. Polyclonal crypt genesis and development of familial small intestinal neuroendocrine tumors. *Gastroenterology*. 2016;151(1):140–51.
17. Torres EM, Sokolsky T, Tucker CM, Chan LY, Boselli M, Dunham MJ, et al. Effects of aneuploidy on cellular physiology and cell division in haploid yeast. *Science*. 2007;317(5840):916–24.
18. Taylor AM, Shih J, Ha G, Gao GF, Zhang X, Berger AC, et al. Genomic and functional approaches to understanding cancer aneuploidy. *Cancer Cell*. 2018;33(4):676–89.e3.
19. Zack TI, Schumacher SE, Carter SL, Cherniack AD, Saksena G, Tabak B, et al. Pan-cancer patterns of somatic copy number alteration. *Nat Genet*. 2013;45:1134.
20. Beroukhi R, Mermel CH, Porter D, Wei G, Raychaudhuri S, Donovan J, et al. The landscape of somatic copy-number alteration across human cancers. *Nature*. 2010;463(7283):899–905.
21. Zhang B, Halder SK, Kashikar ND, Cho YJ, Datta A, Gorden DL, et al. Antimetastatic role of Smad4 signaling in colorectal cancer. *Gastroenterology*. 2010;138(3):969–80.e1–3.
22. Park JW, Jang SH, Park DM, Lim NJ, Deng C, Kim DY, et al. Cooperativity of E-cadherin and Smad4 loss to promote diffuse-type gastric adenocarcinoma and metastasis. *Mol Cancer Res*. 2014;12(8):1088–99.
23. Chaudhry A, Öberg K, Gobl A, Heldin CH, Funa K. Expression of transforming growth factors beta 1, beta 2, beta 3 in neuroendocrine tumors of the digestive system. *Anticancer Res*. 1994;14(5b):2085–91.
24. Iwatsuki M, Mimori K, Yokobori T, Ishi H, Beppu T, Nakamori S, et al. Epithelial-mesenchymal transition in cancer development and its clinical significance. *Cancer Sci*. 2010;101(2):293–9.
25. Walter D, Harter PN, Battke F, Winkelmann R, Schneider M, Holzer K, et al. Genetic heterogeneity of primary lesion and metastasis in small intestine neuroendocrine tumors. *Sci Rep*. 2018;8(1):3811.
26. Langeveld D, van Hattem WA, de Leng WW, Morsink FH, Ten Kate FJ, Giardiello FM, et al. SMAD4 immunohistochemistry reflects genetic status in juvenile polyposis syndrome. *Clin Cancer Res*. 2010;16(16):4126–34.
27. Weinstein JN, Collisson EA, Mills GB, Shaw KR, Ozenberger BA, Ellrott K, et al. The Cancer genome atlas pan-Cancer analysis project. *Nat Genet*. 2013;45(10):1113–20.
28. Blaker H, von Herbay A, Penzel R, Gross S, Otto HF. Genetics of adenocarcinomas of the small intestine: frequent deletions at chromosome 18q and mutations of the SMAD4 gene. *Oncogene*. 2002;21(1):158–64.

## Publisher's Note

Springer Nature remains neutral with regard to jurisdictional claims in published maps and institutional affiliations.

**Ready to submit your research? Choose BMC and benefit from:**

- fast, convenient online submission
- thorough peer review by experienced researchers in your field
- rapid publication on acceptance
- support for research data, including large and complex data types
- gold Open Access which fosters wider collaboration and increased citations
- maximum visibility for your research: over 100M website views per year

**At BMC, research is always in progress.**

Learn more [biomedcentral.com/submissions](https://www.biomedcentral.com/submissions)

