

**CORRECTION**

 Cite this: *RSC Adv.*, 2021, 11, 7416

## Correction: Investigation of plasma metabolomics and neurotransmitter dysfunction in the process of Alzheimer's disease rat induced by amyloid beta 25-35

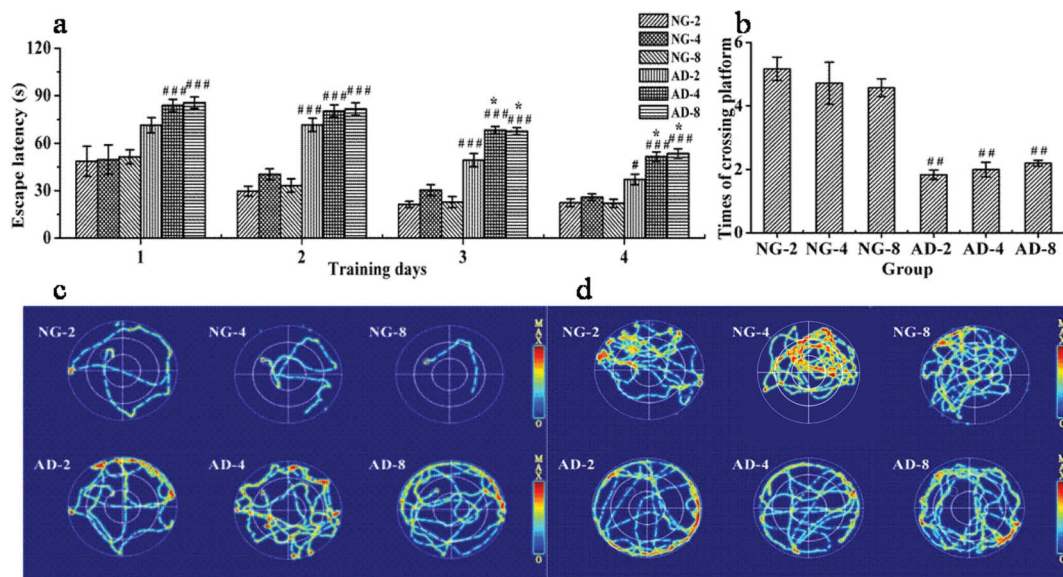
 Mengying Wei,<sup>ab</sup> Yuanyuan Liu,<sup>a</sup> Zifeng Pi,<sup>b</sup> Kexin Yue,<sup>a</sup> Shizhe Li,<sup>c</sup> Mingxin Hu,<sup>a</sup> Zhiqiang Liu,<sup>b</sup> Fengrui Song<sup>b</sup> and Zhongying Liu<sup>\*a</sup>

DOI: 10.1039/d1ra90081a

[rsc.li/rsc-advances](https://rsc.li/rsc-advances)

 Correction for 'Investigation of plasma metabolomics and neurotransmitter dysfunction in the process of Alzheimer's disease rat induced by amyloid beta 25-35' by Mengying Wei *et al.*, *RSC Adv.*, 2019, 9, 18308–18319. DOI: 10.1039/C9RA00302A.

The authors regret that, due to personal negligence, Fig. 1d-NG-4 in this article was repeatedly uploaded as Fig. 1d-NG-2. The authors apologize to readers for this inaccuracy and the corrected figure is shown below. This correction does not affect the results, discussion or conclusion of the article.



**Fig. 1** The performance of spatial learning and memory in rats after 2, 4 and 8 weeks of modelling in the MWM test: (a) the escape latency during the 4 day training period, (b) times of crossing the original platform in the 120 s probe test, (c) trajectories of the last trial, (d) trajectories of rats from each group in (b). Notes:  $n = 10$ , per group; data are expressed as mean  $\pm$  SEM, compared to NG by a  $t$ -test after the same week, ### $P < 0.001$ , ## $P < 0.01$ , # $P < 0.05$ , compared to AD-2, \*\*\* $P < 0.001$ , \*\* $P < 0.01$ , \* $P < 0.05$ , compared to AD-4, <sup>ab</sup> $P < 0.001$ , <sup>bc</sup> $P < 0.01$ , <sup>c</sup> $P < 0.05$ .

The Royal Society of Chemistry apologises for these errors and any consequent inconvenience to authors and readers.

<sup>a</sup>School of Pharmaceutical Sciences, Jilin University, 1266 Fujin Road, Changchun, 130021, China. E-mail: liuzy@jlu.edu.cn; Tel: +86 431 85619704

<sup>b</sup>National Center for Mass Spectrometry in Changchun, Jilin Province Key Laboratory of Chinese Medicine Chemistry and Mass Spectrometry, Changchun Institute of Applied Chemistry, Chinese Academy of Sciences, Changchun 130022, China

<sup>c</sup>Guangdong Univ Technol, Inst Biomed & Pharmaceut Sci, Guangzhou 510006, Guangdong, People's Republic of China

