

RESEARCH ARTICLE

Endozoicomonadaceae symbiont in gills of *Acesta* clam encodes genes for essential nutrients and polysaccharide degradation

Sigmund Jensen^{1,*}, Jeremy A. Frank¹, Magnus Ø. Arntzen¹, Sébastien Duperron², Gustav Vaaje-Kolstad¹ and Martin Hovland^{3,4}

¹Department of Chemistry, Biotechnology and Food Science, Norwegian University of Life Sciences, PO Box 5003, 1432 Ås, Norway, ²UMR 7245 Muséum National d'Histoire Naturelle/CNRS Molécules de Communication et Adaptation des Micro-organismes and Institut Universitaire de France, CP39, 12 rue Buffon, F-75231 Paris Cedex 05, France, ³Department of Biology, University of Bergen, PO Box 7803, 5020 Bergen, Norway and ⁴Centre for Geobiology, University of Bergen, PO Box 7803, 5020 Bergen, Norway

*Corresponding author: Department of Chemistry, Biotechnology and Food Science, Norwegian University of Life Sciences, PO 5003 N-1432, Ås, Norway. Tel: +47 67232500; Fax: +47 67230691; E-mail: sigmundje@gmail.com

One sentence summary: Clam hosted bacteria inform on deep-water coral reef functioning.

Editor: Julie Olson

ABSTRACT

Gammaproteobacteria from the family Endozoicomonadaceae have emerged as widespread associates of dense marine animal communities. Their abundance in coral reefs involves symbiotic relationships and possibly host nutrition. We explored functions encoded in the genome of an uncultured Endozoicomonadaceae '*Candidatus Acestoribacter aggregatus*' that lives inside gill cells of large *Acesta excavata* clams in deep-water coral reefs off mid-Norway. The dominance and deep branching lineage of this symbiont was confirmed using 16S rRNA gene sequencing and phylogenomic analysis from shotgun sequencing data. The 4.5 Mb genome binned in this study has a low GC content of 35% and is enriched in transposon and chaperone gene annotations indicating ongoing adaptation. Genes encoding functions potentially involved with the symbiosis include ankyrins, repeat in toxins, secretion and nutritional systems. Complete pathways were identified for the synthesis of eleven amino acids and six B-vitamins. A minimal chitinolytic machinery was indicated from a glycosyl hydrolase GH18 and a lytic polysaccharide monooxygenase LPMO10. Expression of the latter was confirmed using proteomics. Signal peptides for secretion were identified for six polysaccharide degrading enzymes, ten proteases and three lipases. Our results suggest a nutritional symbiosis fuelled by enzymatic products from extracellular degradation processes.

Keywords: Reef; *Acesta excavata*; Endozoicomonadaceae; genome; polysaccharide; degradation

INTRODUCTION

Unexpectedly dense and thriving animal communities occur on the deep seafloor at hydrothermal vents and at cold seeps (Dubilier, Bergin and Lott 2008), in sunken wood (Distel, DeLong

and Waterbury 1991) and in whale bones (Goffredi et al. 2014). These communities vividly exemplify how nutritional relationships with bacteria can utilize a rich but rather inaccessible carbon and energy resource. Feeding is supported from within the bacterial genomes by genes encoding proteins for the utilization

Received: 31 August 2020; Accepted: 12 May 2021

© The Author(s) 2021. Published by Oxford University Press on behalf of FEMS. This is an Open Access article distributed under the terms of the Creative Commons Attribution License (<http://creativecommons.org/licenses/by/4.0/>), which permits unrestricted reuse, distribution, and reproduction in any medium, provided the original work is properly cited.

of sulfide, methane, hydrogen, carbon dioxide and recalcitrant organic materials like the structural polysaccharide cellulose. Some of the best known marine heterotrophic symbionts are intracellular Gammaproteobacteria of the orders Cellvibrionales in Terebrinidae bivalves (shipworms) that degrade wood (Distel, DeLong and Waterbury 1991; Yang et al. 2009; O'Connor et al. 2014; Sabbadin et al. 2018) and Oceanospirillales in Siboglinidae polychaetes (boneworms) that probably degrade collagen (Goffredi et al. 2014). Exploring symbiotic bacterial genomes not only provide insight into community function. In addition may enzyme technology be provided for the improved degradation of organic matter like polysaccharides to more useful monomeric sugars (Horn et al. 2012; Hemsworth et al. 2015). Oceanospirillales bacteria can excrete hydrolytic enzymes and degrade complex organic compounds (Garrity, Bell and Lilburn 2005) but are not well understood. As symbionts they may also compete for nutrients and degrade host tissue with the very same enzymes if environmental conditions change and food becomes scarce.

In mollusc hosts, Oceanospirillales can inhabit gill tissue, as first observed with chemoautotrophic *Bathymodiolus* mussels at hydrothermal vents on the Pacific-Antarctic Ridge, the Mid-Atlantic Ridge and in cold seeps in the Gulf of Mexico (Zielinski et al. 2009). Similar associations exist with gills of *Alviniconcha* snails at hydrothermal vents in the eastern Lau spreading centre (Beinart et al. 2014) and with *Phacoides pectinatus* clams in sulfur-rich seagrass bed sediments of Wildcat Cove mangroves in Florida (Lim et al. 2019). A metagenome-assembled genome (MAG) and transcript sequences from the *Phacoides* symbiont encoded transposons, toxin secretion, synthesis of amino acids, B-vitamins and fatty acid degradation (Lim et al. 2019). The MAG's 16S rRNA gene sequence affiliated with the genus *Kistimonas* and a bin40 MAG from the golden tube sponge *Aplysina aerophoba* in coastal Slovenia (Slaby et al. 2017). MAGs from the related genus *Endozoicomonas* associated with tropical corals like *Stylophora*, *Pocillopora* and *Acropora* in the Red Sea (Neave et al. 2017) and *Porites* in the Great Barrier Reef (Robbins et al. 2019). *Endozoicomonas* visualized in tissue of the *Stylophora* were observed forming scattered cyst-like aggregations near the coral's Symbiodiniaceae (Bayer et al. 2013). The Symbiodiniaceae are intracellular dinoflagellates (algae) that supply many tropical invertebrates with photosynthates such as glucose (Burriesci, Raab and Pringle 2012) which *Endozoicomonas* may use for essential nutrient synthesis (Neave et al. 2017). The first characterized and cultured *Endozoicomonas* was isolated from the gastrointestinal tract of an algae sap sucking *Elysia* slug, in coastal Japan (Kurahashi and Yokota 2007). All these documented symbionts and more marine invertebrate-associated Oceanospirillales belong to a single phylogenetic clade, recently proposed as the family Endozoicomonadaceae (Bartz et al. 2018). Although their taxonomy was reclassified (Liao et al. 2020), it has been debated (Neave et al. 2016). Nevertheless, to provide a convenient delineation of the host associates this study uses the taxon Endozoicomonadaceae. Their genomes are relatively large, 4.0–6.3 MB (Neave et al. 2014, 2017; Ding et al. 2016; Bartz et al. 2018), encoding phenotypes that potentially range from parasitic consumers of host tissue and cell nuclei to beneficial symbionts that assist in metabolism (Beinart et al. 2014).

A novel Endozoicomonadaceae association was observed involving the bacterium '*Candidatus Acestoribacter aggregatus*' and its host, the clam *Acesta excavata* (family Limidae). Distinct from other Endozoicomonadaceae based on 16S rRNA gene sequence similarity (>7% divergence) and forming intracellular cyst-like aggregations localized with no recognized autotroph, '*Ca. A. aggregatus*' was found dominating the gill microbiome

of all previously investigated *A. excavata* clams from deep-water coral reefs on the continental margin and in a fjord rock wall, mid-Norway (Jensen et al. 2010). Its closest known relatives are the *Phacoides* and *Aplysina* hosted *Kistimonas* (Slaby et al. 2017; Lim et al. 2019) and the *Stylophora* hosted *Endozoicomonas* (Bayer et al. 2013; Neave et al. 2017; Robbins et al. 2019). The clam *A. excavata* is widespread along the East Atlantic continental margin and has been found at depths of 33–3200 m (Vokes et al. 1963). The clam is characterized by an orange- to red-colored body of large size (up to 20 cm), large gill area (up to 240 cm²) and very high filtration rate (>100 L/h) for feeding on dissolved and particulate organic matter such as unicellular algae (Järnegren and Altin 2006). Its food is filtered from the surrounding water masses similar to other suspension feeding bivalves. Their guts appear of similar size in deep- and shallow-water relatives (Allen 1983). In the reef environments off mid-Norway, *A. excavata* is provided with a diet of plankton (Thiem et al. 2006; Jensen et al. 2015) and seasonally photosynthesized carbon from about 2 tons marine snow/km²/year plus particles resuspended from the sediment (Schlüter et al. 2000).

Less easily digested matter is likely to accumulate by water depth due to the preferential use of labile compounds and metabolic degradation processes generating recalcitrant compounds (Gottschalk 1988; Bergauer et al. 2018). Near the seafloor, the marine snow mixes with the dissolved and particulate matter from lateral transport and pore water, elevating bottom water nutrient concentrations (Hovland, Jensen and Indreiten 2012; Burdige and Komada 2015; Maier et al. 2020). We hypothesize that '*Ca. A. aggregatus*' participates in the enzymatic degradation of the more recalcitrant plankton-derived polymers to provide cleavage products for host nutrition from material such as cell walls and exoskeletons, remnants and detritus. There are few genomes available to document the enzymatic capabilities of marine heterotrophic symbionts and to our knowledge none representing Endozoicomonadaceae from deep-water coral reef ecosystems. In the context of the poorly understood functions that underpin these reefs, we investigated the uncultured '*Ca. A. aggregatus*' using amplicon and shotgun genome sequencing supported by proteomics.

MATERIALS AND METHODS

Sampling and handling

A. excavata clams were collected by remotely operated vehicles (ROVs) diving to deep-water coral reefs in hydrocarbon fields at fishing ground Haltenbanken, mid-Norwegian continental margin. The ROVs collected ~15 clams from 317 m depth (65° 01' N, 06° 32' E) in the Kristin field October 2004 and from 369 m depth (65° 40' N, 07° 32' E) in the Skarv field June 2012 (Hovland 2008). The clams were put into two sampling baskets carried by the ROV. In total 16 clams were analysed, 13 by gill DNA sequencing and three more by gill and gut proteomics. All collected clams appeared as healthy adults that resembled a previous collection (Jensen et al. 2010). Onboard the support vessel, the bivalves were immediately frozen (–18°C) and transported to the University of Bergen where they were stored at –80°C prior to transport (on dry ice) and storage at –18°C at the Norwegian University of Life Sciences.

Screening for '*Ca. A. aggregatus*'

Average sized clams (about 13 × 9 cm, 150 g) were thawed in a cold room (~4°C) for a few hours to overnight and dissected

for gill tissues that were first screened for the presence of 'Ca. A. aggregatus'. Following a rinse in 5 mL PBS (pH 7.2), the gill filament samples were crushed under a cover slip or extracted for DNA. Under the microscope (Leitz Laborlux), fields were investigated for structures resembling aggregates and individual bacteria (Figure S1, Supporting Information). The number of aggregates per clam was estimated per field (ca 50 μm \times 50 μm) and multiplied by gill area (Järnegren and Altin 2006). Gill samples extracted for DNA (explained below) were PCR amplified with primers 27f/1492r (Lane et al. 1991) targeting bacterial 16S rRNA genes. The amplicons were cut with *Sall*, restriction fragments sorted by length and the profiles compared with a previously cloned 16S rRNA gene sequence from 'Ca. A. aggregatus' (Figure S1, Supporting Information; Supplementary Text).

DNA extraction

DNA was extracted from gill tissues using the Qiamp DNA mini kit (Qiagen, Germany). For genome sequencing, ten extractions were pooled from a single Skarv specimen (prefixed Ae24) and RNA was removed using 2 mg/mL Ribonuclease A (Sigma-Aldrich, St. Louis, MO). Following precipitation at -20°C overnight in 0.3 M sodium acetate (pH 5.2) and ethanol (96%), the DNA was harvested by centrifugation and washed in 70% ice cold ethanol (Sambrook and Russel 2001). A sample (1 μg) was enriched using the NEBNext microbiome DNA enrichment kit (New England BioLabs, Ipswich, MA, USA). The kit is intended to select non-methylated bacterial DNA over methylated eukaryal DNA and was chosen instead of cell fractionation (Supplementary Text). Enriched DNA was purified with Agencourt Ampure XP beads (Beckman-Coulter, Beverly, MA, USA) and assessed using agarose gel electrophoresis (Sambrook and Russel 2001), a Qubit fluorometer (Invitrogen, Life Technologies, Carlsbad, CA) and a Nanodrop spectrophotometer (Thermo Fisher Scientific, Waltham, MA, USA; Figure S1, Supporting Information).

16S rRNA gene and genome sequencing

The 16S rRNA gene content from 13 clams was profiled using the Nextera XT Index kit for MiSeq sequencing (Illumina Inc, San Diego, CA, USA). Following the protocol for 16S rRNA gene sequencing, PCR reactions (25 μL) combined 6–15 ng template DNA, 0.2 μM bacterial and archaeal primers 341f/805r (Takahashi et al. 2014) and the KAPA HiFi HotStart mix containing iProof High-Fidelity polymerase (Bio-Rad, Hercules CA). Reactions were performed on a Mastercycler Gradient machine (Eppendorf, Hamburg, Germany), with 95°C for 3 min (denaturation) followed by 25 cycles of 95°C for 30 s, 55°C for 30 s (annealing), 72°C for 30 s (extension) and a final 72°C for 5 min. Amplicons were cleaned with the AMPure beads and used as template in a second PCR (50 μL reactions) for 8 cycles to attach dual indices and sequencing adapters. The amplicons were checked for size and purity in 2% agarose gels (Figure S1, Supporting Information). Amplicons (excluding Ae23 which was too low in DNA concentration) were adjusted to the same 4 nM concentration, pooled, denatured and paired-end sequenced in house following the Nextera protocol (Illumina Inc). For genome sequencing, a total of 680 ng Ae24 DNA (20 μL) was delivered to the Norwegian sequencing centre in Oslo. The DNA was run through a SPRIworks protocol (Beckmann) using a size selection of 300–600 bp and 10 PCR cycles.

Sequence analysis of rRNA genes

The ribosomal 16S rRNA gene sequences were analysed in mothur (Schloss et al. 2009). Following the MiSeq standard operating procedure, fastq files were merged from paired reads and filtered to remove adapters, primers and sequences with ambiguous nucleotides, homopolymers (>7 nt), short length (<400 nt) and potential chimeras found relative to the more abundant sequences using VSEARCH (Rogers et al. 2016). The sequences were aligned in SILVA 138 (Quast et al. 2013) and screened to overlap in the same V3–V4 region. Sequence numbers were normalized across samples by subsampling to the smallest sample. Operational taxonomic units (OTUs) were clustered at 97% similarity to define species and singletons were removed. Classification was performed with the SILVA 138 database at a cutoff of 80 and inferred to the lowest possible taxonomic level, using the method implemented by RDP (Wang et al. 2007). Sequences not classified as Bacteria and Archaea at the domain level (Eukaryota, chloroplast, mitochondria, unknown) were removed. The resulting taxonomy was supported by searching GenBank (blastn) for nearest relatives, identities and sample source information (Altschul et al. 1997).

Shotgun MiSeq files (fastq) were filtered for adapters and quality trimmed with default parameters using the IDBA_UD implemented Sickle (Peng et al. 2012). These rRNA gene sequences were also classified using mothur (Schloss et al. 2009). Following the merging of paired reads and filtering to remove sequences with ambiguous nucleotides and homopolymers, classification was performed at a cutoff of 100. Taxa still unidentified following searches of random sequences by blastn, were classified at a cutoff of 80 and again searched by blastn. Remaining unknowns were searched (blastn) against the phylogenies of 'Ca. A. aggregatus' (EF508132, GQ240891, GQ240892 and HQ412802- HQ412805) and *A. excavata* (GQ240893 and KX713266).

Sequence assembly, binning and functional gene analysis

For the genome assembly, reads were merged using Fq2fa and assembled in IDBA_UD (Peng et al. 2012). All contigs above 1 kb in length were uploaded to the Integrated Microbial Genomes (IMG) Expert Review for functional annotation (Markowitz et al. 2014). Functions were represented by clusters of orthologous groups (COGs) and if missing, alternatively by protein families (pfam) or the KEGG orthology (KO) used to analyse pathways. The carbohydrate active enzymes were represented by annotations from dbCAN2 (Zhang et al. 2018) for improved detection. Secreted proteins were predicted using LipoP 1.0 (Junker et al. 2003) and SignalP 5.0 (Armenteros et al. 2019).

The 'Ca. A. aggregatus' genome was binned from the full >1 kb data set based on sequence composition (*k*-mer) for taxonomic classification using PhyloPythiaS (Patil, Rounse and McHardy 2012). Composition-based binning is quite accurate for low diversity microbiomes dominated by a single identified target population and has been used to reconstruct genomes from a biomass digester (Hagen et al. 2017). The classifier was trained with contigs similar to 'Ca. A. aggregatus' and potential contaminants (Supplementary Text). Genome completeness and contamination was assessed with 507 marker genes from 263 gammaproteobacterial genomes using CheckM (Parks et al. 2015).

A phylogenomic analysis was performed with reference genomes guided by the previous 16S rRNA gene phylogeny (Jensen et al. 2010). For each genome, 37 single copy marker

genes (Darling et al. 2014) expanded from AMPHORA (Wu and Eisen 2008) were identified and aligned in PhyloSift. Multiple hits (e.g. IF-2) were manually inspected and only sequences of the most significant blastp hits were retained. Less complete genomes without the full set of markers genes (e.g. *Phacoides* symbiont) were not retained for phylogenomic analysis. The markers were concatenated into a single alignment using BioEdit (Hall 1999). The carbohydrate-active lytic polysaccharide monoxygenase (LPMO10) gene deduced amino acids were aligned in Muscle (Edgar 2004). All phylogenetic analyses were performed in Phyliip (Felsenstein 2013).

To quantitatively compare functional gene abundances in '*Ca. A. aggregatus*' and reference genomes, mothur (Schloss et al. 2009) was used to generate a normalized and nonredundant dataset on the COGs by subsampling the genes 'shared file' (COG table). Singletons were removed and differential gene abundance in COGs between Endozoicomonadaceae and other Gammaproteobacteria was assessed using a linear discriminant analysis (LDA) effect size (LEfSe) method that couples standard Kruskal–Wallis and Wilcoxon tests with tests encoding biological consistency and effect relevance (Segata et al. 2011), as implemented in mothur (Schloss et al. 2009). For gene abundance differences between '*Ca. A. aggregatus*' and other Endozoicomonadaceae, a minimum 2-fold increase in COG relative abundances was adopted as a threshold (Karimi et al. 2018). The COG table was also used to calculate a distance matrix (Bray–Curtis) for principal coordinate analysis (PCoA). Selected COGs responsible for shifting samples along the two axes were included in the PCoA visualization. The clustering was judged for statistical significance ($P < 0.05$) using the nonparametric group test of variance (AMOVA).

Protein extraction

To support the metagenome with expressed genes, thus organism activity, proteins were identified. Proteins were extracted from four clams by combining tissue with liquid phenol (5 g in 0.5 mL H₂O), 0.4 M sucrose and glass beads (size $\leq 106 \mu\text{m}$) and bead beating in a FastPrep24 (MP Biomedicals, Santa Ana, CA) for 3×60 s. Debris was removed by centrifugation at $16\,000 \times g$, and the top phase was transferred to a new tube and combined with an equal volume of 1 M sucrose. After vortexing and re-centrifugation, the top phase was transferred to a new tube and five volumes of 0.1 M ammonium acetate in methanol were added. Samples were incubated at -20°C overnight and the next day centrifuged at $16\,000 \times g$ for 20 min. The pellet was washed with cold acetone and solubilized in SDS sample buffer. Samples were loaded on an Any-kD Mini-PROTEAN gel (Bio-Rad Laboratories), separated by a 5-minute electrophoresis run (minor separation, but mostly to clean up sample) and stained using Coomassie Brilliant Blue R250. Proteins entrapped in the gel were reduced and carbamidomethylated using 10 mM DTT and 55 mM iodoacetamide, respectively, prior to in-gel digestion with trypsin as described previously (Arntzen et al. 2015).

Mass spectrometry

Prior to mass spectrometry, peptides were desalted using C18 ZipTips (Merck Millipore, Darmstadt, Germany), according to manufacturer's instructions. Peptides were analyzed using a nanoLC-MS/MS system (Dionex Ultimate 3000 UHPLC; Thermo Scientific, Bremen, Germany) connected to a Q-Exactive

mass spectrometer (Thermo Scientific) and operated in data-dependent mode to switch automatically between orbitrap-MS and higher-energy collisional dissociation (HCD) orbitrap-MS/MS acquisition. MS raw files were analyzed using MaxQuant (Cox and Mann 2008) version 1.6.0.13 and searched against all predicted proteins from the '*Ca. A. aggregatus*' genome (1772 contigs) in the background of the whole metagenome (128 012 contigs). This adds confidence to the 577 detected proteins by ensuring that any identified peptide was supported by an underlying gene. MaxQuant parameters were as previously described (Hagen et al. 2017). Identifications were filtered to require a minimum of two positives for detection (singletons removed) and to achieve a protein false discovery rate (FDR) of 1%.

Data deposition

Metagenome amplicon and shotgun data sets are available at the NCBI Sequence Read Archive under accession number PRJNA523603. Contig data sets are available at the JGI system Integrated Microbial Genomes under accession number Ga0072491. The mass spectrometry proteomics data sets are available at the ProteomeXchange Consortium via the PRIDE partner repository with the identifier PXD016288.

RESULTS AND DISCUSSION

A distinct gill microbiome

Phase contrast microscopy and DNA fragment screening of gill samples from the *A. excavata* clams indicated that representatives of '*Ca. A. aggregatus*' were present. The observed structures resembled aggregations scattered inside vacuoles as previously seen by fluorescent *in situ* hybridization and the restriction enzyme digestion profiles matched a previously cloned 16S rRNA gene sequence (Figure S1, Supporting Information; Jensen et al. 2010). We estimated a total of 10^6 aggregates and 10^8 '*Ca. A. aggregatus*' cells per clam gill microbiome.

The V3–V4 region of the 16S rRNA gene was PCR amplified from Bacteria and Archaea (Takahashi et al. 2014) from gill tissue samples of 13 clams. In total 39 500 normalized sequence reads were analysed per gill microbiome. The OTUs estimated a high Good's coverage ($>99\%$) and a low Shannon's H (<0.24) but the rarefaction curves did not reach an asymptote (Figure S2, Supporting Information). This probably resulted from a greatly enriched OTU1 (Fig. 1A). OTU1 ($>95\%$ read abundance) exactly matched phylotypes Ae2p1d1 and Ae1pa1 that were previously found dominating gill tissue clone libraries from *A. excavata* (Jensen et al. 2010). Another phylotype (Ae2p1c4) from the libraries was 99% identical to OTU2 (Fig. 1A). The slightly different 16S rRNA genes within the libraries is similar to aggregates of tropical coral associated *Endozoicomonas* ($<3\%$ nucleotide variation), indicating different co-occurring strains (Neave et al. 2016) or a few to one dominant strain with different gene sequences (Neave et al. 2014; Ding et al. 2016). The '*Ca. A. aggregatus*' phylotypes are most similar ($\sim 94\%$ identity) to the *Kistimonas*-like gill symbiont of the *Phacoides* clam (Lim et al. 2019). Our study confirms that *A. excavata* enriches for distinct uncultured bacteria, in line with the conserved bacterial diversity patterns observed in corals on deep-water reefs (Jensen et al. 2019). The remaining 591 OTUs ($<5\%$ read abundance) included 19 prokaryotic phyla (Fig. 1A). For example, OTU3 affiliated 99% with a sponge hosted *Rubritalea* (Verrucomicrobia; EU346428). Archaea were represented by only 4 OTUs and classified as Nitrososphaeria (Crenarchaeota) and Woesearchaeales (Nanoarchaeota).

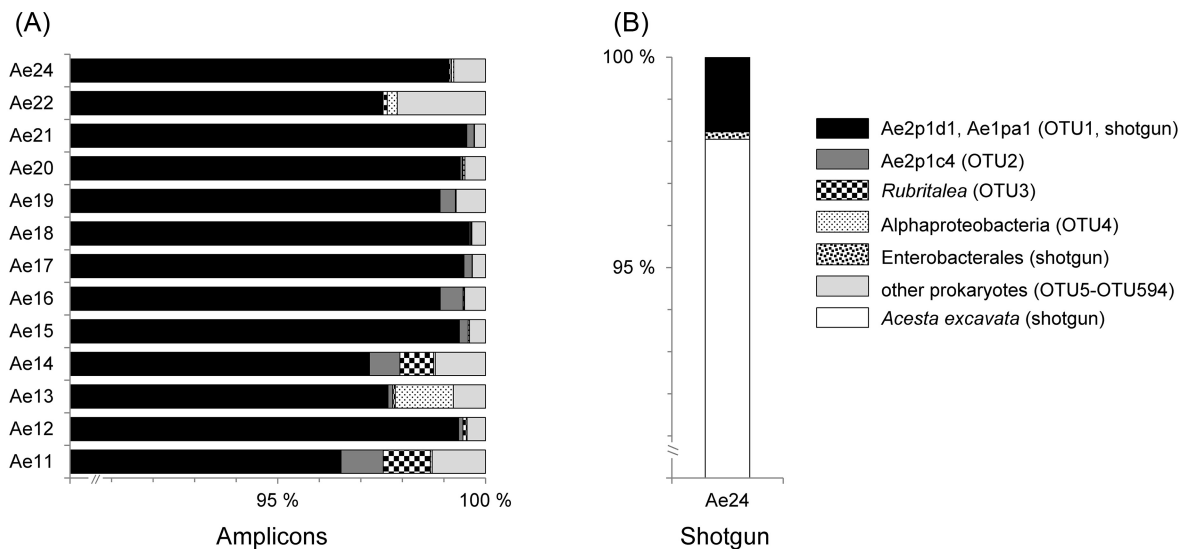


Figure 1. Microbiome diversity associated with gills of *Acreta excavata* clams from deep-water coral reefs off mid-Norway. **(A)** Bacteria and Archaea represented by V3–V4 regions simultaneously amplified from 16S rRNA genes totalling 39 500 sequences per clam. **(B)** Shotgun sequenced gill microbiome of clam Ae24 totalling 3994 identified 16S rRNA and 18S rRNA gene fragments. The clams were collected from reefs in Skarv (369 m depth; 65° 40' N, 07° 32' E) and Kristin (317 m depth; 65° 01' N, 06° 32' E) hydrocarbon fields at Haltenbanken.

Table 1. Genome features of ‘*Candidatus Acretibacter aggregatus*’.

	Ae24
Mbp, %GC	4.5, 35
Coverage	31 × (1830 contigs)
Completeness	83% (1.3% contamination)
Genes	5611 (1872 functional)
Proteins	12 (577 including host)
COGs	1711
rRNA	16S (1), 23S (1), 5S (2)
tRNA	148
CRISPR	Cas3 (1)
Sequences total	~19 million (~310 bp)

The amplicon sequencing was supported by the shotgun sequencing. Among the 3994 shotgun rRNA gene sequences identified (clam Ae24), 16S rRNA gene sequences were dominated by ‘*Ca. A. aggregatus*’ phylotype Ae2p1d1 (Fig. 1B). The 18S rRNA gene sequences all identified as *A. excavata* (Fig. 1B). This suggested much remaining eukaryal DNA following bacterial DNA enrichment (Figure S1, Supporting Information). Some protists and fungi might have escaped detection because they may not have been represented in the database or because a too stringent classification was employed. To include this uncertainty, the term gill microbiome is used.

A dominant, deep branching Endozoicomonadaceae

Using a 16.2 kb contig in a training set for taxonomic classification by PhyloPythiaS (Patil, Roun McHardy 2012), a 4.5 Mb ‘*Ca. A. aggregatus*’ genome was drafted (Table 1). A complete rRNA operon was present and shared 99% identity to phylotype Ae2p1d1 (16S), 88% to a virulent *Pseudomonas aeruginosa* from a burn patient blood culture (23S) and 92% to a *Halioglobus japonicus* from seawater at 100 m depth at the Pacific Station S1 (5S). The 16S rRNA gene sequence differed from that of Ae2p1d1 by

only one nucleotide indicating assembly accuracy. The difference (C) was found in position 1511 (*Escherichia coli* numbering) of primer 1492r used in PCR prior to the previous cloning. CheckM (Parks et al. 2015) estimated genome completeness at 83.0% with a contamination of 1.3% (Table 1). This lack of completeness is likely caused by genes associated with unbridged repeats (Ding et al. 2016), misplaced contigs (inaccurate binning) and remaining host DNA (insufficient enrichment). As the genome is not closed, undetected genes cannot be excluded. Ideally, assembly would have been performed using DNA from a cultured ‘*Ca. A. aggregatus*’ but attempts at culturing were not successful. However, because shotgun methods sample almost randomly, it is likely that the most abundant genes and proteins were detected. The genome was searched for 37 ‘elite’ marker genes previously identified as near universal, in single copy and individually reconstructing similar phylogenetic trees (Darling et al. 2014) and all were identified. Obtained phylogeny is congruent with a previous single gene 16S rRNA based phylogeny (Jensen et al. 2010) and positioned the ‘*Ca. A. aggregatus*’ in a deep branching lineage adjacent to temperate sponge-hosted *Kistimonas bin40* (Slaby et al. 2017) and *Parendozoicomonas* (Bartz et al. 2018) in a clade of marine invertebrate associated Oceanospirillales (Fig. 2; Bayer et al. 2013; Neave et al. 2016, 2017; Slaby et al. 2017; Lim et al. 2019; Robbins et al. 2019), family Endozoicomonadaceae.

Genomic evidence for host–symbiont integration

To investigate the functional characteristics and potential benefits to the host, inferred amino acid sequences were compared across the genomes of ‘*Ca. A. aggregatus*’ and 27 Gammaproteobacteria references (Fig. 2) using COGs. All genomes were normalized to the same number of COGs (2631) and annotated using the same COG database (IMG). Clustering the COGs by PCoA (Fig. 3A) separated the Endozoicomonadaceae from the other Gammaproteobacteria (AMOVA $P < 0.001$), supporting homogeneity within the family and highlighting differences with other Gammaproteobacteria (Fig. 2, bootstrap >93%). Comparable to the marker genes (Fig. 2), COGs clustered ‘*Ca. A. aggregatus*’ with the sponge-hosted *Kistimonas bin40* (Fig. 3A). The

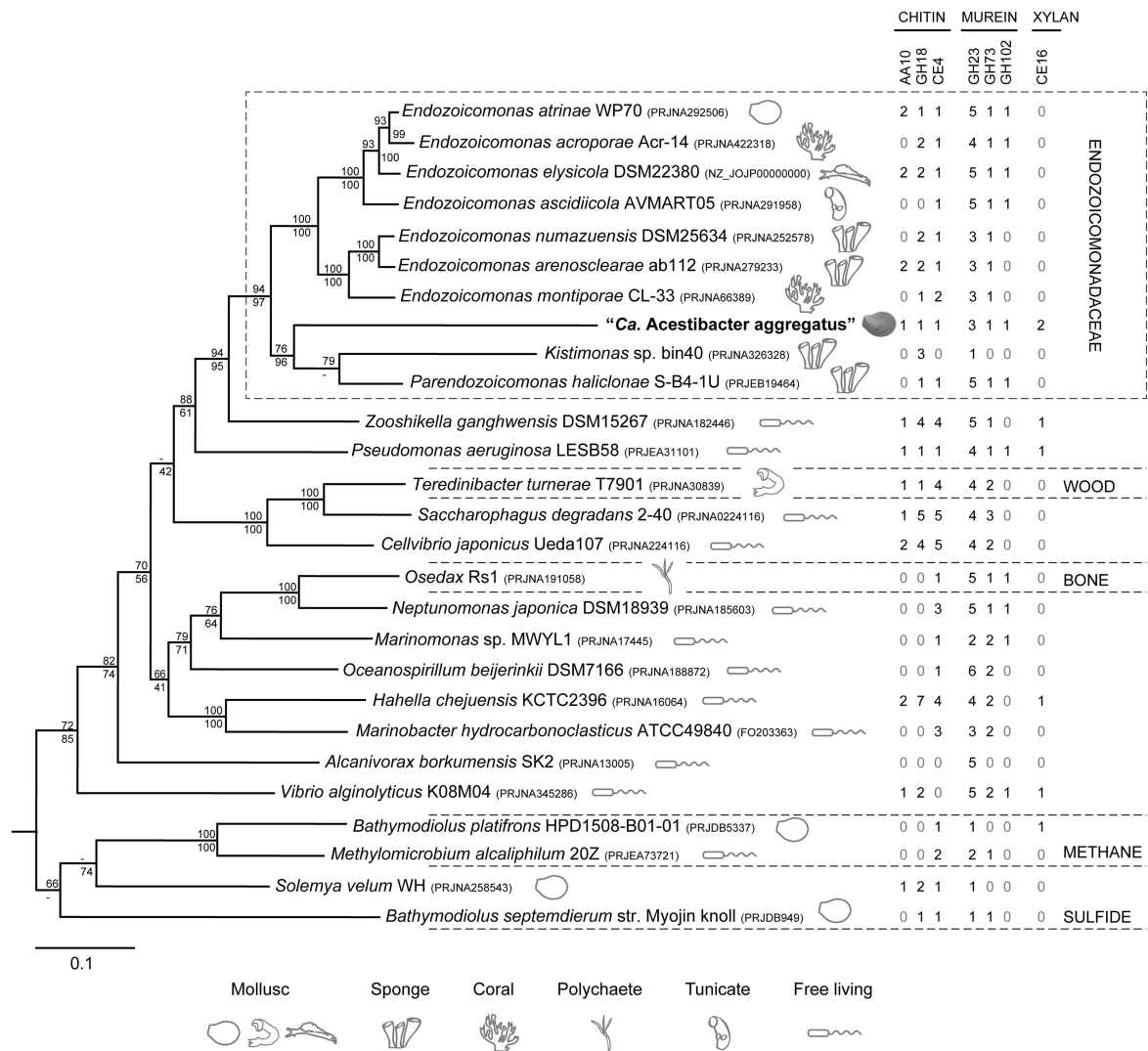


Figure 2. Phylogenomic tree showing the relationship of '*Candidatus Acestibacter aggregatus*' to 26 gammaproteobacterial references. Profiled across taxa are gene counts for depolymerizing enzymes, predicted secreted and active on structural carbohydrates in exoskeletons of zooplankton (chitin) and cell walls of bacteria (murein i.e. peptidoglycan) and algae (xylan). Included in the tree are marine nutritional symbionts from the host families Teredinidae, Siboglinidae, Solemyidae and Mytilidae (wood, bone, sulfide and methane utilizers). The tree is based on a concatenated alignment of 5950 amino acids deduced from 37 single copy genes (Darling et al. 2014) and was constructed in Phylyp (Felsenstein 2013) using maximum likelihood (PAM model). Bootstrap (SEQBOOT) values above 50% from 100 iterations (CONSENSE) are indicated at the branch points (PROML/PROTPARS). The scale bar represent 0.1 changes per amino acid position. The outgroup was the Alphaproteobacterium *Agrobacterium tumefaciens* Ach5 hosted by a sneezewort (PRJNA278497).

COG profile resembled *Kistimonas* bin40 (Slaby et al. 2017) and the more distant coral-associated *E. montipora* CL-33 (Ding et al. 2016; Fig. 3B).

A set of 66 COGs were found significantly enriched in Endozoicomonadaceae compared to other Gammaproteobacteria (Figure S3, Supporting Information; Supplementary Text). A total of 50 of these COGs were represented by the '*Ca. A. aggregatus*' partial genome. The set was enriched in repeats, hemolysins, adhesins and secretion systems, but depleted in chemotaxis and motility genes. This apparently reflects host association comparable to proteobacterial symbionts including Endozoicomonadaceae in sponges (Slaby et al. 2017; Karimi et al. 2018), corals (Neave et al. 2017; Robbins et al. 2019) and the *Phacoides* clams (Lim et al. 2019). The most enriched COGs were ankyrin repeats (Figure S3, Supporting Information). Ankyrins (COG category T) are eukaryote-like proteins that can subvert host defences and protect against leucocytes and other host

immune cells (Al-Khodori et al. 2010). Repeats may also flank mobile elements like the highly enriched transposons (COG category X) of the *E. montipora* CL-33 genome (Fig. 3B). The enrichment was suggested to be a signature of ongoing genome erosion associated with a symbiotic or a pathogenic lifestyle (Ding et al. 2016). COGs of repeats (ankyrins, TPR, RTX) and transposons (IS5, IS30) in '*Ca. A. aggregatus*' were found >2-fold enriched above the average Endozoicomonadaceae (Supplementary Text). RTX (repeat in toxins) is a family of secreted cytolytic toxins of activities like pore forming hemolysins, colonization and virulence (Linhartová et al. 2010). RTX of the sulfur oxidizing gill symbiont of *Bathymodiolus* have been hypothesized to be 'tamed' for beneficial interaction by potentially being antagonistic towards parasitic bacteria (Sayavedra et al. 2015). As the *Bathymodiolus* sulfur oxidizer might be evolving into an obligate symbiont, its many expressed chaperones, COG category O (Fig. 3B), and histone-like proteins may protect against protein

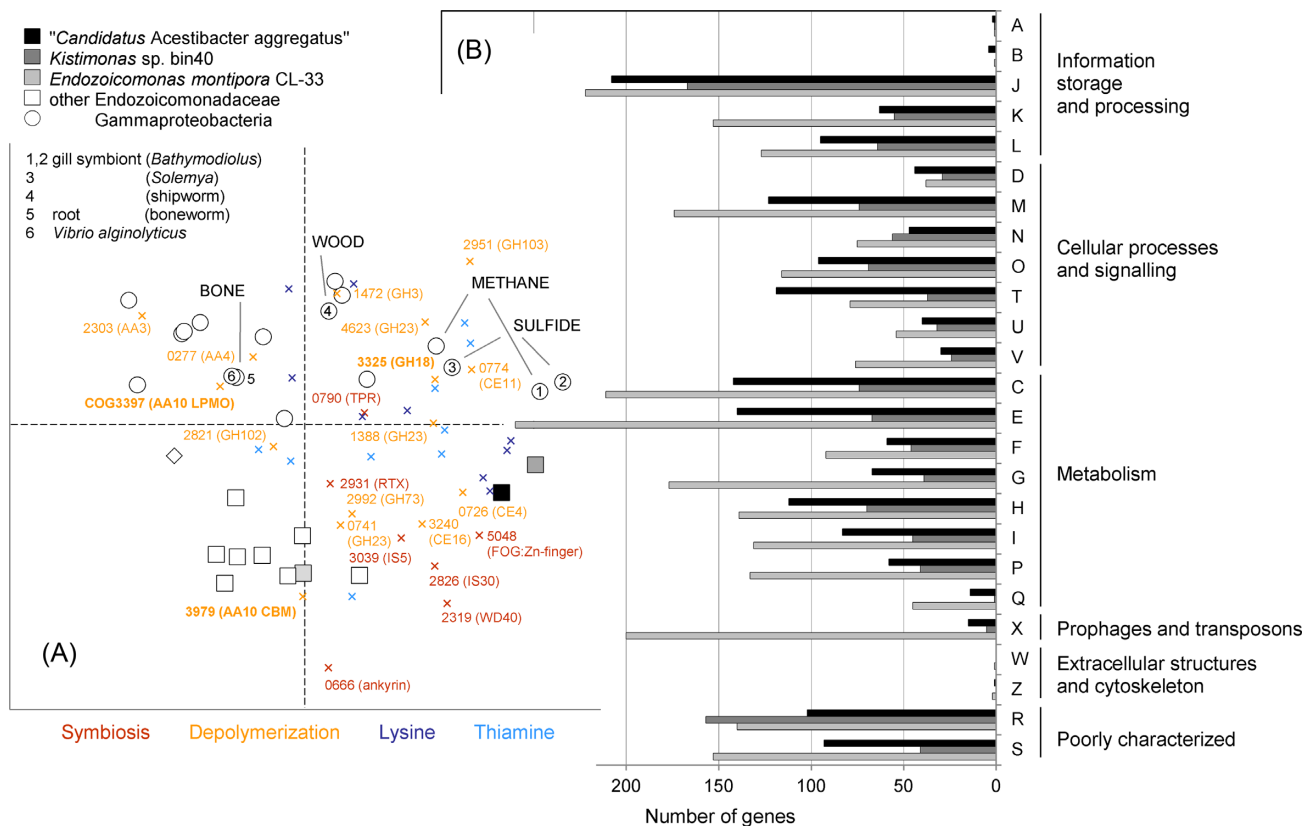


Figure 3. Functional comparison summarizing variation in gene counts across COGs for ‘*Candidatus Acestoribacter aggregatus*’ and 27 gammaproteobacterial references. (A) Gene counts per COG principal coordinate analysis in comparison with all references and indicates functions potentially attributable to symbiosis, depolymerization and nutrition. COGs in bold are hypothesized to represent a minimal chitinolytic machinery of secreted AA10 and GH18 enzymes. The round and squared shapes represent individual genomes. The crosses represent individual COGs, for clarity named for those not part of a pathway only. (B) Gene counts per COG category in comparison with a phylogenetically close (bin40) and a more distant (CL-33) Endozoicomonadaceae. Each genome is represented by 1107 genes and gene counts are compared for a total of 2631 COGs. PCoA axes range -0.35 to 0.35 and explain a variation of 10.9% (x-axis) and 8.3% (y-axis). The genome of the outgroup is represented by a diamond (Ach5).

misfolding from enhanced mutation (Ponnudurai et al. 2017). The proteome of ‘*Ca. A. aggregatus*’ also revealed activities (Table 2) of chaperones and notably amino acid synthesis (elongation factor), energy production (ATP synthase) and polysaccharide degradation (LPMO10). Support for host-symbiont integration was provided by the many potential symbiosis factors identified (Table S1, Supporting Information).

Biosynthesis pathways suggestive of nutritional symbiosis

The relationship with ‘*Ca. A. aggregatus*’ may provide essential missing nutrients due to the presence of genes encoding the production of amino acids and B vitamins. COG category E ‘amino acid transport and metabolism’ represents 140 genes in ‘*Ca. A. aggregatus*’ (Fig. 3B). The elongation factor was expressed (Table 2) and genes for all 20 tRNAs and 18 aminoacyl-tRNA synthetases (Gottschalk 1988) were found. Complete pathways were identified for the synthesis of 11 amino acids including the essential threonine, phenylalanine and tryptophan. Remaining synthesis pathways were missing some genes, like *dapE* for lysine and *hisN* for histidine (Figure S4, Supporting Information). Curiously, *hisN* was neither found in the Endozoicomonadaceae reference genomes (Fig. 2). Apart from building proteins, amino acids are precursors for the synthesis of such compounds as purines and pyrimidines and many B vitamins required as

cofactors of enzymes in the metabolism of, for example, NAD (Gottschalk 1988). The synthesis of B vitamins belongs to COG category H ‘coenzyme transport and metabolism’, representing 112 genes in ‘*Ca. A. aggregatus*’ (Fig. 3B). Complete pathways were identified for the synthesis of thiamine (B1), riboflavin (B2), nicotinate (B3), pantothenate (B5), pyridoxine (B6) and biotin (B8) with folate (B9) missing the gene *phoAB* (Figure S4, Supporting Information). Amino acids and co-factors are typically produced by nutritional symbionts as were noted for the sulfur- and methane-oxidizing gill symbionts of *Bathymodiolus* (Ponnudurai et al. 2017; Supplementary Text). Genes for nitrogen fixation (*nif*) were not found but the nutritional syntheses may recycle nitrogen by assimilating host-excreted ammonia via glutamate dehydrogenase or the GOGAT glutamine and glutamate synthetase (Gottschalk 1988; Table S2, Supporting Information).

Heterotrophic central metabolism

The Endozoicomonadaceae are heterotrophs utilizing carbohydrates and proteins (Neave et al. 2016, 2017; Bartz et al. 2018). Genes encoding CO_2 assimilation, oxidation of sulfur or methane was not found in ‘*Ca. A. aggregatus*’ (Supplementary Text). Energy appeared to be generated by electrons carried from the oxidation of NADH. Identified genes revealed a respiratory chain with several types of cytochromes including a terminal oxidase *cbb3* with high affinity for O_2 common to organisms in

Table 2. Proteins detected from 'Candidatus Acestoribacter aggregatus'. Triplicate samples of gills and guts plus a gut sample of clam Ae24 was analysed. A total of four proteins were hypothetical (10000617¹, 10001394, 10002442¹ and 10006042¹).

Gene ID	COG	Function	Closest relative (accession no.)	Aligned (ID %)	Positive clams		
					G	g	g
100002212	0443	Chaperone DnaK	<i>Kistimonas</i> gill symbiont (OQX39667) ^M	648 (84)	3	3	1
10006401	0056	FOF1 ATP synthase	<i>Parendoziocomonas</i> h. (WP087109735) ^S	514 (78)	3	3	1
10003315	0050	Elongation factor Tu	Cellvibrionaceae sp. (WP142929796) ^{Fr}	397 (90)	3	0	0
100000514	00816 ²	DNA binding H-NS	<i>Kistimonas</i> gill symbiont (OQX36710) ^M	139 (65)	3	0	0
10002248 ¹	2885	Membrane OmpA	<i>Kistimonas</i> gill symbiont (OQX38305) ^M	169 (57)	3	0	0
10001183 ¹	1651	Periplasmic DsbC	<i>Zooshikella ganghwe</i> . (WP094788118) ^{Fr}	223 (44)	3	0	0
100000713 ¹	3397	Enzyme LPMO10	<i>Vibrio alginolyticus</i> (ARP38077) ^F	501 (76)	2	0	1
10001996 ¹	3637	Membrane Porin	<i>Oleispira antarctica</i> (WP046008914) ^{Fr}	187 (40)	1	2	0

G Gill (n = 3), g gastrointestinal tract (n = 3 + 1), ^Mmollusc, ^Ssponge, ^Ffish, ^{Fr}free-living, ¹signal peptide, ²pfam.

low oxygen environments (Table S2, Supporting Information). Hydrogen peroxide and radicals formed from the reaction of oxygen with reduced flavoproteins or other electron carriers (Gottschalk 1988) may be protected against by the identified catalase and superoxide dismutase encoding genes.

NADH and many precursors for biosynthesis are produced by the TCA cycle, of which all genes were found (Table S2, Supporting Information). TCA may also operate on acetate (Gottschalk 1988) by the glyoxylate cycle enzymes isocitrate lyase and malate synthase but whether acetate is used by 'Ca. A. aggregatus' is unclear. The gene for acetyl-CoA synthetase (EC:6.2.1.1) was not found. TCA may however be fuelled by Acetyl-CoA from fatty acid beta oxidation encoded by genes for fatty acid import (*fadL*, D) and degradation (*fadA*, B, E and H; Table S2, Supporting Information; Supplementary Text). Acetyl-CoA may also be formed by the degradation of peptides such as alanine or cysteine. The NADPH and five carbon sugars for nucleotide and NAD synthesis are produced by the pentose phosphate cycle (Gottschalk 1988), but genes encoding NADP⁺ reduction (EC:1.1.1.44 and EC:1.1.1.49) were not found (Table S2, Supporting Information), not even in the Endozoicomonadaceae reference genomes (Fig. 2). The 'Ca. A. aggregatus' genome was also missing genes encoding the glycolysis enzymes (Table S2, Supporting Information) glucose phosphate isomerase (EC:5.3.1.9) and pyruvate kinase (EC:2.7.1.40). The kinase could be replaced by a pyruvate phosphate dikinase (*ppsA*). The glucose could be replaced by fructose-6P from chitin, which also yields acetate and ammonia (Keyhani and Roseman 1999). Genes encoding all five missing enzymes (EC denoted) were, however, found in the *A. excavata* host genome. From chitin, the pathway was indicated complete for peptidoglycan biosynthesis, but genes were missing between the monomer GlcNAc (N-Acetylglucosamine) and fructose-6P. Furthermore, the gene for the glucose phosphotransferase import system enzyme I (Gottschalk 1988) was also missing (EC:2.7.3.9). Thus, it is unclear whether 'Ca. A. aggregatus' can utilize glucose.

Glucose is mostly sourced from photosynthetates of algae (Bergauer et al. 2018) and because it is preferentially used by bacteria (Gottschalk 1988) and other microplankton, sustenance in the deep-water coral reef environment may instead involve recalcitrant compounds that are more abundant. The 'Ca. A. aggregatus' genome was found to encode several enzymes that may depolymerize carbohydrates (26), proteins (40), peptides (32) and lipids (10) (Table 3 and Table S3, Supporting Information). Many of these enzymes were identified with signal peptides suggesting transport out of the cell.

Potential for complex polysaccharide degradation

Outside the cell, secreted enzymes may degrade refractory carbon compounds available in marine snow and resuspended matter (Schlüter et al. 2000) as well as fresher biomass from down-welling (Thiem et al. 2006). Springtime plankton detected above Haltenbanken reefs included, for example, metabolically-active *Microcalanus* copepods, *Phaeocystis* and *Pyramimonas* algae, *Thalassiosira* diatoms, *Gyrodinium* dinoflagellates and SAR11 bacteria (Jensen et al. 2015). This provides nutrition from the more recalcitrant and structurally similar compounds of bacterial cell wall peptidoglycan, algae cell wall cellulose and xylan and the zooplankton exoskeleton chitin. Chitin is considered the most abundant marine polysaccharide, and it is continuously supplied as a result of zooplankton molting (Keyhani and Roseman 1999).

Interestingly, the gene and protein of a copper dependent monooxygenase were identified (Tables 2 and 3). This auxiliary activity 10 (AA10) family lytic polysaccharide monooxygenase (LPMO) contains a C-terminal family 5 chitin binding module CBM5/12 indicating activity towards chitin (Fig. 4A). The conserved amino acid residues, including the two Cu coordinating histidines (H28, H114) of the active site and the surrounding alanine (A112) and phenylalanine (P187), resemble characterized LPMO (CBP21) from the chitin-utilizing *Serratia marcescens* (Vaaje-Kolstad et al. 2010; Book et al. 2014). Active LPMOs are known to cleave glycosidic bonds in recalcitrant polysaccharides by oxidation, increasing the accessibility for hydrolases and esterases, thus boosting the enzymatic degradation of chitin and cellulose (Vaaje-Kolstad et al. 2010; Hemsworth et al. 2015).

LPMO homologues have been identified in other symbiotic bacteria, such as *Teredinibacter turnerae* (Sabbadin et al. 2018). It is known that in gills of this bivalve host (shipworm), *T. turnerae* secrete enzymes that help efficiently degrade cellulose (Distel, DeLong and Waterbury 1991; Yang et al. 2009; O'Connor et al. 2014). Surprisingly, the closest homologous sequence (76% amino acid identity) of the 'Ca. A. aggregatus' LPMO is from a *Vibrio*, associated with a Kiel fjord pipefish (Table 3). Inside hosts, LPMOs may become active factors in the adhesion of symbionts and virulence of pathogens (Agostoni, Hangasky and Marletta 2017). Whether LPMOs in gill associated *Endozoicomonadaceae* are involved with parasitism on chromatin in *Bathymodiolus* (Zielinski et al. 2009) or somehow with pathogenicity of razor clams (Elston 1986), blue mussels (Schill, Iwanowicz and Adams 2017), king scallops (Cano et al. 2018) or fish larvae (Mendoza et al. 2013; Katharios et al. 2015) remains unknown. Phylogenetic analysis positioned the 'Ca. A. aggregatus' LPMO in a clade with another coral reef derived LPMO in the tree (Fig. 4B).

Table 3. Depolymerizing enzyme profiles targeting marine structural polysaccharides in ‘*Candidatus Acestoribacter aggregatus*’. Gene count is shown in comparison with genomes from 27 gammaproteobacterial references.

Gene ID	CAZy	Function	Closest relative (accession no.)	Aligned (ID %)	No. of genes		
					A	E	O
100003712	AA3	GMC-oxidoreductase	<i>Kistimonas</i> gill symbiont (OQX35095) ^M	483 (63)	1	18	30
10000374	AA4	FAD-oxidoreductase	<i>Zooshikella ganghwe.</i> (WP027709861) ^{Fr}	461 (59)	1	2	17
100000713 ¹	AA10	Monooxygenase	<i>Vibrio alginolyticus</i> (ARP38077) ^F	501 (76)	1	6	9
10001412 ¹	CE4	Chitin deacetylase	<i>Kistimonas</i> gill symbiont (OQX33362) ^M	329 (47)	1	10	37
10000605	CE11	Amine deacetylase	(OQX37986) ^M	304 (88)	1	10	17
10001024 ¹	CE16	Acetyl esterase	(OQX34880) ^M	303 (42)	2	1	5
10001957	GH3	Acetylhexosaminidase	(OQX35778) ^M	332 (55)	1	16	34
10000872 ¹	GH18	Chitinase	Sulfur-oxid. gill symb. (WP066043100) ^M	544 (48)	1	14	25
10000305 ¹	GH23	Peptidoglycan lytic	<i>Kistimonas</i> gill symbiont (OQX38807) ^M	518 (57)	3	36	77
10000014 ¹	GH73	Peptidoglycan hydrol.	(OQX39118) ^M	218 (44)	1	9	23
10000317 ¹	GH102	Lysozyme	(OQX37468) ^M	372 (57)	1	6	5
10004641	GH103	Peptidoglycan lytic	<i>Parendozucomonas h.</i> (WP087107845) ^S	296 (56)	1	10	25

A ‘*Ca. A. aggregatus*’, E Other Endozoicomnadaeae (n = 10), O Other Gammaproteobacteria (n = 17), ^Mmollusc, ^Ssponge, ^Ffish, ^{Fr}free-living, ¹signal peptide.

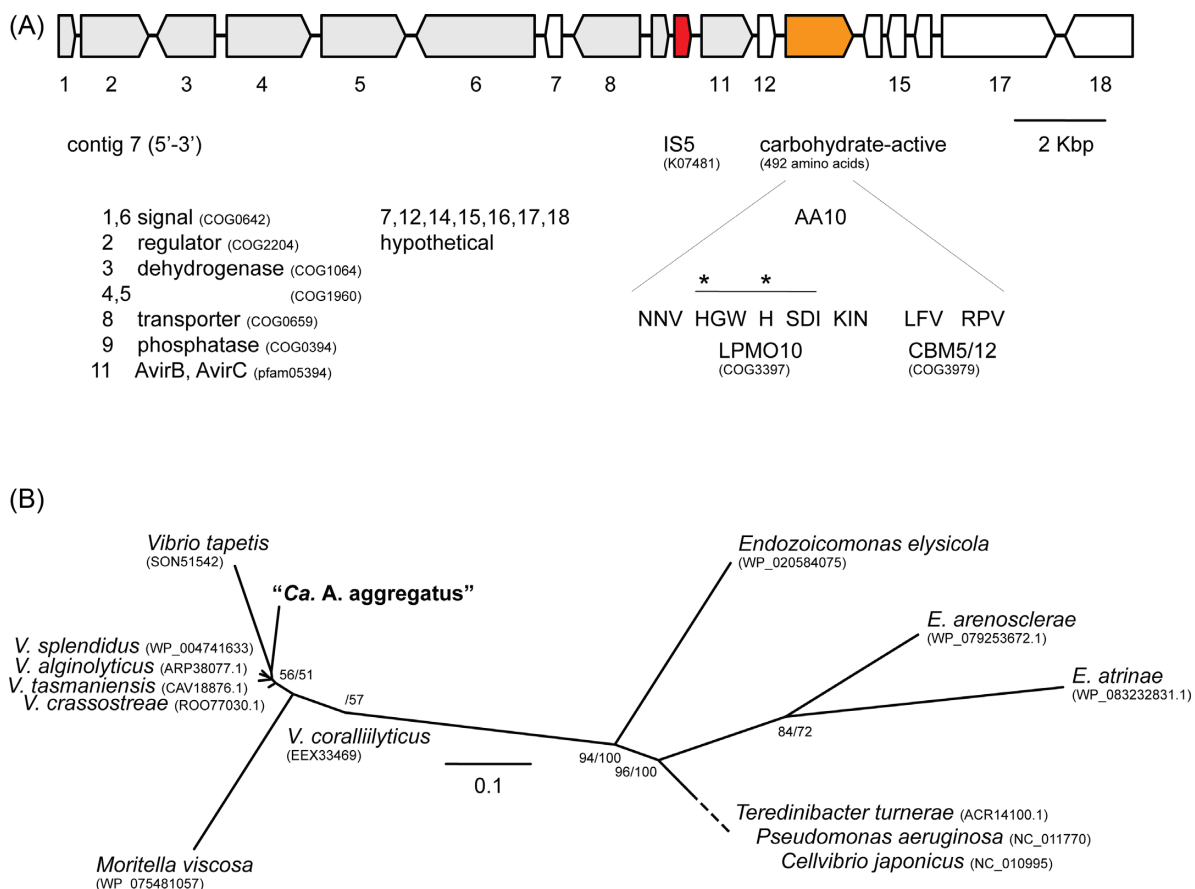


Figure 4. Neighborhood analysis of the carbohydrate-active domain containing lytic polysaccharide monooxygenase in ‘*Candidatus Acestoribacter aggregatus*’. (A) Gene annotation is shown highlighting amino acid residues flanking the family auxiliary activity 10 (AA10) LPMO catalytic domain and the chitin binding CBM5/12 module. Residues bridged by a line flank the alignment. Asterisks (*) indicate Cu coordinating histidines (H28 and H114) conserved in the active site. (B) Phylogenetic tree showing the relationship of the ‘*Ca. A. aggregatus*’ LPMO10 to three other Endozoicomnadaeae and ten other Gammaproteobacteria as based on the 220 aligned (Edgar 2004) catalytic domain amino acids. The tree was constructed in Phylip (Felsenstein 2013) using maximum likelihood (PAM model). Bootstrap (SEQB00T) values above 50% from 100 iterations (CONSENSE) are indicated at the branch points (PROML/PROTPARS). The scale bar represent 0.1 changes per amino acid position. No outgroup was included because of the well separated clustering.

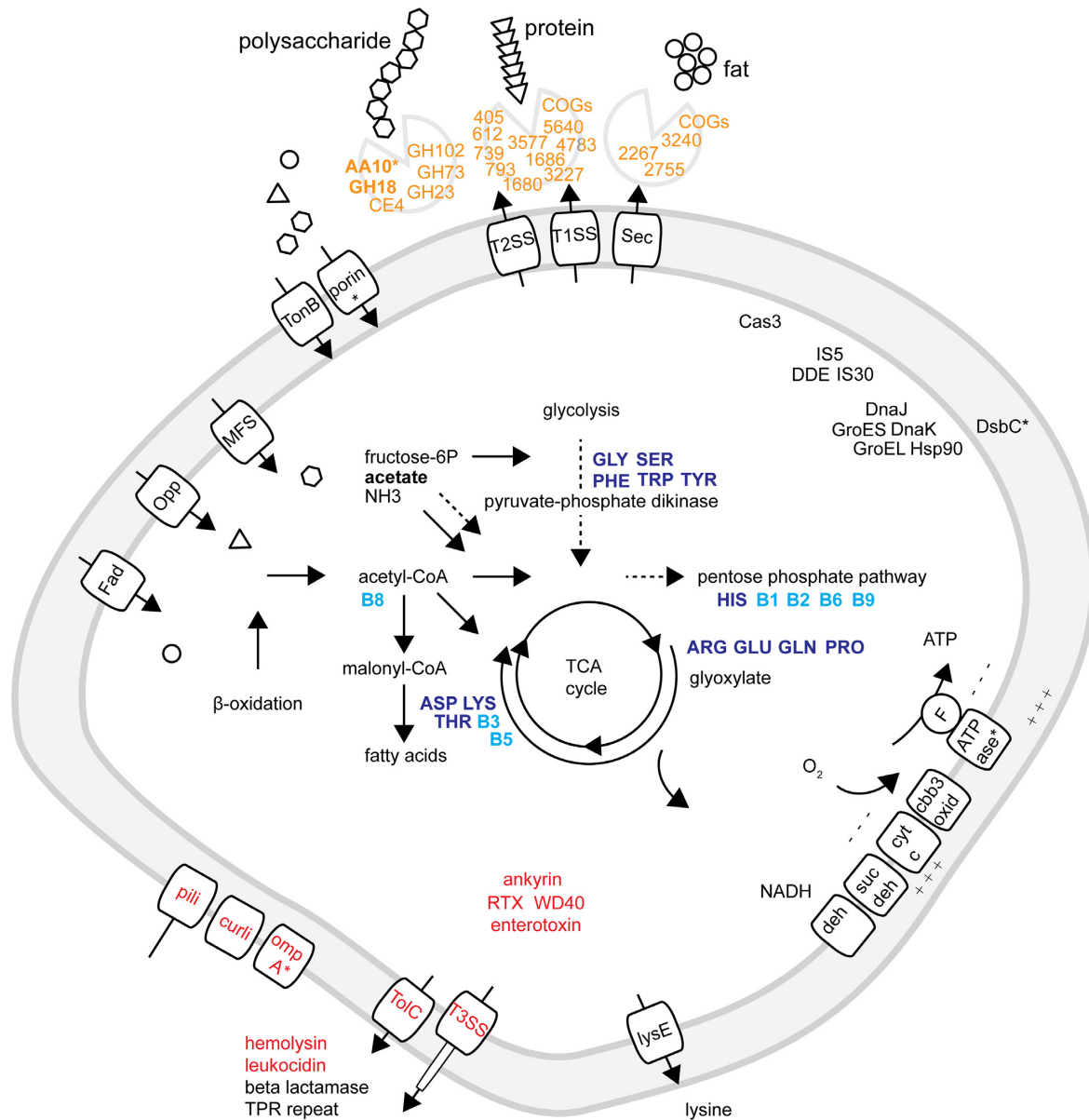


Figure 5. Selected functions of the '*Candidatus Acestoribacter aggregatus*' as inferred from genome comparisons. The depicted cell is hypothesized to secrete enzymes active in the degradation of recalcitrant compounds that fuel a nutritional symbiosis. Enzyme activities are predicted towards structural polysaccharides from zooplankton exoskeletons (chitin), algae cell walls (xylan and cellulose) and bacteria cell walls (murein) as well as towards organism's tissues (protein) and storage materials (fat). Depolymerization may also occur in the periplasmic space comparable to the selfish mode of polysaccharide utilization by free-living marine bacteria (Reintjes et al. 2019). Possible routes and modes of enzyme transport outside the depicted cell are unknown. The suggestions by O'Connor et al. (2014) on the shipworm symbiont may apply. Cleavage products and enzymes become ingested with the food while some monomers are imported directly into the gill. The host may utilize amino acids and B-vitamins including whole symbiont cells and cleavage products like possibly acetate. Host access may be through leakage, efflux proteins and lysosomal degradation. A dashed line indicates one or more genes only found in the host genome. An asterisk indicates proteins detected by proteomics. Bold highlights the minimal chitinolytic machinery, acetate and essential nutrients. Annotations are detailed in Table S1 (Supporting Information; symbiosis factors), Table S2 (Supporting Information; metabolism), Table 3 and Table S3 (Supporting Information; depolymerization) and Figure S4 (Supporting Information; amino acids and B-vitamins). The cell shape was outlined from a transmission electron microscopy image (Figure S1, Supporting Information). Visual inspection indicates a pleomorphic bacterium located in aggregates inside vacuoles scattered within the epithelial gill cells cytoplasm.

All the '*Ca. A. aggregatus*' clade members associate with potentially pathogenic Vibrionaceae and Moritellaceae. These bacteria encode uncharacterized LPMO enzymes that fall outside the two phylogenetic clades of Book et al. (2014). Clade I contains all biochemically defined chitin monooxygenases, while clade II contains subclades that are either cellulose or chitin monooxygenases. In the Fig. 4B alignment, the '*Ca. A. aggre-*

gatus' and its seven clade members share the same 185 amino acid residue length but only 36 of the 118 conserved residues are shared with the aforementioned CBP21 from *Serratia*. The CBP21 is 19 residues shorter and clusters in clade I (Book et al. 2014). Although these LPMOs are indicated with a chitin binding module CBM5/12, chitin may not be the catalytic domain's only substrate (Supplementary text). Genes for chitin metabolism in '*Ca.*

A. aggregatus' may have been acquired by horizontal transfer from the Vibrionaceae, as indicated from the LPMO phylogeny, elevated 43 mole % GC and nearby IS5 element (Fig. 4A).

The LPMO of 'Ca. *A. aggregatus*' may form a minimal chitinolytic machinery together with a CBM5/12 chitin-binding GH18 glycosyl hydrolase as found in *S. marcescens* (Vaaje-Kolstad et al. 2013; Table 3). The combined oxidative and hydrolytic activity may strengthen evidence for complex polysaccharide degradation. Chitin may also be deacetylated by a CE4 carbohydrate esterase. These and other polysaccharide active enzymes contain signal peptides for secretion (Table 3) and are likely exported out of the 'Ca. *A. aggregatus*' by type 2 secretion systems T2SSs (Table S1, Supporting Information). Additionally, the *A. excavata* host genome encodes for at least one GH18 chitinase, a GH20 chitinase and an AA15 lytic chitin and cellulose monooxygenase (Table S3, Supporting Information). This host-symbiont system may thus rely on relevant biomass-converting enzymes that are different from those occurring in other systems known so far (Horn et al. 2012; Hemsworth et al. 2015). Experimental incubation in aquaria demonstrated that *A. excavata* assimilated ¹³C-labelled carbon from both diatom organic matter and bacteria (Maier et al. 2020).

We hypothesize that 'Ca. *A. aggregatus*' utilizes structural polysaccharides (Fig. 5) such as bacterial peptidoglycan, algal cellulose and xylan, and copepod chitin as nutrient sources. If the enzymes are extracellular and secreted in the mucus coating the gill, they would be ingested along with the food particles. These enzymes could potentially contribute to extracellular digestion of biopolymers and thus assist the bivalve in exploiting various types of decaying organic matter.

CONCLUSIONS

Our study provides insight into the functional potential of deep-water bivalve-associated Endozoicomonadaceae. Bacteria from this family have emerged as widespread associates of dense marine animal communities in vents, seeps, sediments and coral reefs, including fish and shellfish consumed by humans. The uncultured 'Ca. *A. aggregatus*' studied herein dominates the gill microbiome of *A. excavata* bivalves from deep-water coral reefs and a rock wall, mid-Norway. Genome analyses suggest a nutritional relationship, characterized by aerobic heterotrophy, synthesis of essential nutrients and the secretion of depolymerizing enzymes. The LPMO10 and GH18 minimal chitinolytic machinery identified is possibly involved in extracellular degradation processes that may assist the host in utilization of the more recalcitrant biopolymers available on the surrounding reef especially in winter. Eukaryote-like proteins, toxins and secretion systems likely support the intracellular symbiosis overall but the large genome does not exclude a free-living lifestyle and the relationship being facultative or less mutualistic. Under stressful conditions such as food shortage, heterotrophic symbionts could become pathogens. This ambiguity is supported by functions encoded in the Endozoicomonadaceae, which are similar to a putative mutualist in *Stylophora* coral (Bayer et al. 2013) and a parasite in *Bathymodiolus* mussels (Zielinski et al. 2009). However, the many repeats, transposons, and lowered mole % GC support that host and symbiont are becoming more integrated.

ACKNOWLEDGMENTS

We thank Lars Petter Myhre and the crew on 'Christina E' for sampling and Rune Weltzien for bringing the bivalves ashore

(Statoil, DNVGL). Helpful support was provided by Jane Ludvigsen with DNA purification, Live Heldal Hagen and Gregor Gillfillan with guidance on the sequencing, Phillip B. Pope with discussions on genome assembly and annotation, Benoit Kunath with performing CheckM and Ulrike Jaekel with comments on the manuscript.

SUPPLEMENTARY DATA

Supplementary data are available at [FEMSEC](https://www.femsec.org/) online.

FUNDING

This work was supported financially by the Norwegian Deep Water Programme (project 8205000019).

Conflicts of interest. None declared.

REFERENCES

- Agostoni M, Hangasky JA, Marletta MA. Physiological and molecular understanding of bacterial polysaccharide monooxygenases. *Microbiol Mol Biol Rev* 2017;**81**:e00015–17.
- Al-Khodor S, Price CT, Kalia A et al. Ankyrin-repeat containing proteins of microbes: a conserved structure with functional diversity *Trends Microbiol* 2010;**18**: 132–9.
- Allen JA. The ecology of deep-sea Molluscs. In: Russell-Hunter WD (ed.). *The Mollusca*. London: Academic Press, Vol 6, Ecology, 1983, 29–75.
- Altschul SF, Madden TL, Schäffer AA et al. Gapped BLAST and PSI-BLAST: a new generation of protein database search programs *Nucleic Acids Res* 1997;**25**:3389–402.
- Armenteros JJA, Tsirigos KD, Sønderby CK et al. SignalP 5.0 improves signal peptide predictions using deep neural networks. *Nat Biotechnol* 2019;**37**:420–3.
- Arntzen MØ, Karlskås IL, Skaugen M et al. Proteomic investigation of the response of *Enterococcus faecalis* V583 when cultivated in urine. *PLoS One* 2015;**10**:e0126694.
- Bartz JO, Blom J, Busse HJ et al. *Parendozoicomonas haliclona* gen nov sp nov isolated from a marine sponge of the genus *Haliclona* and description of the family Endozoicomonadaceae fam nov comprising the genera *Endozoicomonas*, *Parendozoicomonas*, and *Kistimonas* Syst. *Appl Microbiol* 2018;**41**:73–84.
- Bayer T, Neave MJ, Alsheikh-Hussain A et al. The microbiome of the Red Sea coral *Stylophora pistillata* is dominated by tissue-associated *Endozoicomonas* Bacteria. *Appl Environ Microbiol* 2013;**79**:4759–62.
- Beinart RA, Nyholm SV, Dubilier N et al. Intracellular Oceanospirillales inhabit the gills of the hydrothermal vent snail *Alviniconcha* with chemosynthetic, γ -proteobacterial symbionts. *Environ Microbiol Rep* 2014;**6**:656–64.
- Bergauer K, Fernandez-Guerra A, Garcia JAL et al. Organic matter processing by microbial communities throughout the Atlantic water column as revealed by metaproteomics. *Proc Natl Acad Sci* 2018;**115**:E400–8.
- Book AJ, Yennamalli RM, Takasuka TE et al. Evolution of substrate specificity in bacterial AA10 lytic polysaccharide monooxygenases. *Biotechnol Biofuels* 2014;**7**:109.
- Burdige DJ, Komada T. Sediment pore waters. In: *Biogeochemistry of Marine Dissolved Organic Matter*. Amsterdam: Elsevier, 2015, 535–77.
- Burriesci MS, Raab TK, Pringle JR. Evidence that glucose is the major transferred metabolite in dinoflagellate-cnidarian symbiosis *J Exp Biol* 2012;**215**:3467–77.

- Cano I, van Aerle R, Ross S et al. Molecular characterization of an *Endozoicomonas*-like organism causing infection in the King Scallop (*Pecten maximus* L). *Appl Environ Microbiol* 2018;**84**:e00952–17.
- Cox J, Mann M. MaxQuant enables high peptide identification rates, individualized ppb-range mass accuracies and proteome-wide protein quantification *Nat Biotechnol* 2008;**26**:1367–72.
- Darling AE, Jospin G, Lowe E et al. PhyloSift: phylogenetic analysis of genomes and metagenomes *PeerJ* 2014;**2**:e243.
- Ding JY, Shiu JH, Chen WM et al. Genomic insight into the host-endosymbiont relationship of *Endozoicomonas montiporae* CL-33(T) with its coral host. *Front Microbiol* 2016;**7**:251.
- Distel DL, DeLong EF, Waterbury JB. Phylogenetic characterization and in situ localization of the bacterial symbiont of shipworms (Teredinidae: bivalvia) by using 16S rRNA sequence analysis and oligodeoxynucleotide probe hybridization. *Appl Environ Microbiol* 1991;**57**:2376–82.
- Dubilier N, Bergin C, Lott C. Symbiotic diversity in marine animals: the art of harnessing chemosynthesis. *Nat Rev Microbiol* 2008;**6**:725–40.
- Edgar RC. MUSCLE: multiple sequence alignment with high accuracy and high throughput. *Nucleic Acids Res* 2004;**32**:1792–7.
- Elston RA. An intranuclear pathogen [nuclear inclusion X (NIX)] associated with massive mortalities of the Pacific razor clam, *Siliqua patula*. *J Invertebr Pathol* 1986;**47**:93–104.
- Felsenstein J. *PHYMLIP-phylogeny Inference Package (version 369)*. Seattle, WA: Department of Genomic Sciences, University of Washington, 2013.
- Garrity GM, Bell JA, Lilburn T. Order VIII Oceanospirillales ord nov. In: Brenner DJ, Krieg NR, Staley JT et al. (eds). *Bergey's Manual of Systematic Bacteriology, Vol 2*. New York: Springer, 2005, 270–92.
- Goffredi SK, Yi H, Zhang Q et al. Genomic versatility and functional variation between two dormant heterotrophic symbionts of deep-sea *Osedax* worms. *ISME J* 2014;**8**: 908–24.
- Gottschalk G. *Bacterial Metabolism*. 2nd edn. New-York: Springer-Verlag, 1988.
- Hagen LH, Frank JA, Zamanzadeh M et al. Quantitative metaproteomics highlight the metabolic contributions of uncultured phylotypes in a thermophilic anaerobic digester. *Appl Environ Microbiol* 2017;**83**:e01955.
- Hall T. BioEdit: a user-friendly biological sequence alignment editor and analysis program for Windows 95/98/NT. *Nucleic Acids Symp Ser* 1999;**41**:95–8.
- Hemsworth GR, Johnston EM, Davies GJ et al. Lytic polysaccharide monoxygenases in biomass conversion. *Trends Biotechnol* 2015;**33**:747–61.
- Horn SJ, Vaaje-Kolstad G, Westereng B et al. Novel enzymes for the degradation of cellulose. *Biotechnol Biofuels* 2012;**5**:45
- Hovland M, Jensen S, Indreiten T. Unit pockmarks associated with *Lophelia* coral reefs off mid-Norway: more evidence of control by 'fertilizing' bottom currents. *Geo-Mar Lett* 2012;**32**:545–54.
- Hovland M. *Deep-Water Coral Reefs. Unique Biodiversity Hot-Spots*. Chichester: Praxis Publishing Ltd, 2008.
- Järnegren J, Altin D. Filtration and respiration of the deep living bivalve *Acesta excavata* (JC Fabricius, 1779) (Bivalvia; Limidae). *J Exp Mar Biol Ecol* 2006;**334**:122–9.
- Jensen S, Duperron S, Birkeland NK et al. Intracellular Oceanospirillales bacteria inhabit gills of *Acesta bivalves*. *FEMS Microbiol Ecol* 2010;**74**:523–33.
- Jensen S, Hovland M, Lynch MDJ et al. Diversity of deep-water coral-associated bacteria and comparison across depth gradients. *FEMS Microbiol Ecol* 2019;**95**. DOI: 10.1093/femsec/fiz091.
- Jensen S, Lynch MDJ, Ray JL et al. Norwegian deep-water coral reefs: cultivation and molecular analysis of planktonic microbial communities. *Environ Microbiol* 2015;**17**:3597–609.
- Juncker AS, Willenbrock H, von Heijne G et al. Prediction of lipoprotein signal peptides in gram-negative bacteria. *Protein Sci* 2003;**12**:1652–62.
- Karimi E, Slaby BM, Soares AR et al. Metagenomic binning reveals versatile nutrient cycling and distinct adaptive features in alphaproteobacterial symbionts of marine sponges *FEMS Microbiol Ecol* 2018;**94**:1–18.
- Katharios P, Seth-Smith HMB, Fehr A et al. Environmental marine pathogen isolation using mesocosm culture of sharp-snout seabream: striking genomic and morphological features of novel *Endozoicomonas* sp. *Sci Rep* 2015;**5**:17609.
- Keyhani NO, Roseman S. Physiological aspects of chitin catabolism in marine bacteria. *Biochimica et Biophysica Acta BBA Gen Sub* 1999;**1473**:108–22.
- Kurahashi M, Yokota A. *Endozoicomonas elysicola* gen nov, sp nov, a g-proteobacterium isolated from the sea slug *Elysia ornata*. *Syst Appl Microbiol* 2007;**30**:202–6.
- Lane DJ. 16S/23S rRNA sequencing. In: Stackebrandt E, Goodfellow M (ed.). *Nucleic Acid Techniques in Bacterial Systematics*. UK: Chichester, JohnWiley & Sons, 1991, 115–75.
- Liao H, Lin X, Li Y et al. Reclassification of the taxonomic framework of orders cellvibrionales, oceanospirillales, pseudomonadales, and alteromonadales in class gammaproteobacteria through phylogenomic tree analysis. *mSyst* 2020;**5**:e00543–20.
- Lim SJ, Davis BG, Gill DE et al. Taxonomic and functional heterogeneity of the gill microbiome in a symbiotic coastal mangrove lucinid species. *ISME J* 2019;**13**:902–20.
- Linhartová I, Bumba L, Maín J et al. RTX proteins: a highly diverse family secreted by a common mechanism. *FEMS Microbiol Rev* 2010;**34**:1076–112.
- Maier SR, Kutti T, Bannister RJ et al. Recycling pathways in cold-water coral reefs: use of dissolved organic matter and bacteria by key suspension feeding taxa. *Sci Rep* 2020;**10**:9942.
- Markowitz VM, Chen IM, Chu K et al. IMG/M 4 version of the integrated metagenome comparative analysis system. *Nucleic Acids Res* 2014;**42**:D568–73.
- Mendoza M, Guiza L, Martinez X et al. A novel agent (*Endozoicomonas elysicola*) responsible for epitheliocystis in cobia *Rachycentrum canadum* larvae. *Dis Aquat Organ* 2013;**106**:31–7.
- Neave MJ, Apprill A, Ferrier-Pagès C et al. Diversity and function of prevalent symbiotic marine bacteria in the genus *Endozoicomonas*. *Appl Microbiol Biotechnol* 2016;**100**:8315–24.
- Neave MJ, Michell CT, Apprill A et al. *Endozoicomonas* genomes reveal functional adaptation and plasticity in bacterial strains symbiotically associated with diverse marine hosts. *Sci Rep* 2017;**7**:40579.
- Neave MJ, Michell CT, Apprill A et al. Whole-genome sequences of three symbiotic *Endozoicomonas* bacteria. *Genome Accoun* 2014;**2**:e00802–14.
- O'Connor RM, Fung JM, Sharp KH et al. Gill bacteria enable a novel digestive strategy in a wood-feeding mollusk. *Proc Natl Acad Sci* 2014;**111**:E5096–104.
- Parks DH, Imelfort M, Skennerton CT et al. CheckM: assessing the quality of microbial genomes recovered from isolates, single cells, and metagenomes *Genome Res* 2015;**25**:1043–55.

- Patil KR, Rounse L, McHardy AC. The PhyloPythiaS web server for taxonomic assignment of metagenome sequences. *PLoS One* 2012;7:e38581.
- Peng Yu, Leung HCM, Yiu SM et al. IDBA-UD: a de novo assembler for single-cell and metagenome sequencing data with highly uneven depth. *Bioinformatics* 2012;28:1420–8.
- Ponnudurai R, Kleiner M, Sayavedra L et al. Metabolic and physiological interdependencies in the *Bathymodiolus azoricus* symbiosis. *ISME J* 2017;11:463–77.
- Quast C, Pruesse E, Yilmaz P et al. The SILVA ribosomal RNA gene database project: improved data processing and webbased tools. *Nucleic Acids Res* 2013;41:D590–6.
- Reintjes G, Arnosti C, Fuchs B et al. Selfish, sharing and scavenging bacteria in the Atlantic Ocean: a biogeographical study of bacterial substrate utilisation. *ISME J* 2019;13:1119–32.
- Robbins SJ, Singleton CM, Chan CX et al. A genomic view of the reef-building coral *Porites lutea* and its microbial symbionts. *Nat Microbiol* 2019;4:2090–100.
- Rognes T, Flouri T, Nichols B et al. VSEARCH: a versatile open source tool for metagenomics. *PeerJ* 2016;4:e2584.
- Sabbadin F, Pesante G, Elias L et al. Uncovering the molecular mechanisms of lignocellulose digestion in shipworms. *Biotechnol Biofuels* 2018;11:59.
- Sambrook J, Russell DW. *Molecular Cloning: A Laboratory Manual*, 3rd edn. New York: Cold Spring Harbor Laboratory Press, 2001.
- Sayavedra L, Kleiner M, Ponnudurai R et al. Abundant toxin-related genes in the genomes of beneficial symbionts from deep-sea hydrothermal vent mussels. *Elife* 2015;4. DOI: 10.7554/eLife.07966.
- Schill WB, Iwanowicz D, Adams C. *Endozoicomonas* dominates the gill and intestinal content microbiomes of *Mytilus edulis* from Barnegat Bay, New Jersey. *J Shellfish Res* 2017;36:391–401.
- Schloss PD, Westcott SL, Ryabin T et al. Introducing mothur: open source, platform-independent, community supported software for describing and comparing microbial communities. *Appl Environ Microbiol* 2009;75:7537–41.
- Schlüter M, Sauter EJ, Schäfer A et al. Spatial budget of organic carbon flux to the seafloor of the northern North Atlantic (60°N–80°N). *Global Biogeochem Cycles* 2000;14:329–40.
- Segata N, Izard J, Waldron L et al. Metagenomic biomarker discovery and explanation. *Genome Biol* 2011;12:R60.
- Slaby BM, Hackl T, Horn H et al. Metagenomic binning of a marine sponge microbiome reveals unity in defense but metabolic specialization. *ISME J* 2017;11:2465–78.
- Takahashi S, Tomita J, Nishioka K et al. Development of a prokaryotic universal primer for simultaneous analysis of Bacteria and Archaea using next-generation sequencing. *PLoS One* 2014;9:e105592.
- Thiem Ø, Ravagnan E, Fosså JH et al. Food supply mechanisms for cold-water corals along a continental shelf edge. *J Mar Syst* 2006;60:207–19.
- Vaaje-Kolstad G, Horn SJ, Sørli M et al. The chitinolytic machinery of *Serratia marcescens* – a model system for enzymatic degradation of recalcitrant polysaccharides. *FEBS J* 2013;280:3028–49.
- Vaaje-Kolstad G, Westereng B, Horn SJ et al. An oxidative enzyme boosting the enzymatic conversion of recalcitrant polysaccharides. *Science* 2010;330:219–22.
- Vokes HE. Studies on tertiary and recent giant Limidae. *Tulane Stud Geol* 1963;2:75–92.
- Wang Q, Garrity GM, Tiedje JM et al. Naive Bayesian classifier for rapid assignment of rRNA sequences into the new bacterial taxonomy. *Appl Environ Microbiol* 2007;73:5261–7.
- Wu M, Eisen JA. A simple, fast, and accurate method of phylogenomic inference. *Genome Biol* 2008;9:R151.
- Yang JC, Madupu R, Durkin AS et al. The complete genome of *Teredinibacter turnerae* T7901: an intracellular endosymbiont of marine wood-boring bivalves (Shipworms). *PLoS One* 2009;4:e6085.
- Zhang H, Yohe T, Huang L et al. dbCAN2: a meta server for automated carbohydrate-active enzyme annotation. *Nucleic Acids Res* 2018;46:W95–W101.
- Zielinski FU, Pernthaler A, Duperron S et al. Widespread occurrence of an intranuclear bacterial parasite in vent and seep bathymodiolin mussels. *Environ Microbiol* 2009;11:1150–67.