

RESEARCH

Open Access



# In vitro permissiveness of bovine neutrophils and monocyte derived macrophages to *Leishmania donovani* of Ethiopian isolate

Geremew Tasew<sup>1,2</sup>, Endalamaw Gadisa<sup>2</sup>, Aduugna Abera<sup>2</sup>, Aboma Zewude<sup>2</sup>, Menberework Chanyalew<sup>2</sup>, Abraham Aseffa<sup>2</sup>, Markos Abebe<sup>2</sup>, Uwe Ritter<sup>3</sup>, Ger van Zandbergen<sup>4</sup>, Tamás Laskay<sup>5</sup> and Ketema Tafess<sup>6\*</sup>

## Abstract

**Background:** Epidemiological studies in Ethiopia have documented that the risk of visceral leishmaniasis (VL, Kala-azar) is higher among people living with domestic animals. The recent report on isolation of *Leishmania donovani* complex DNA and the detected high prevalence of anti-leishmanial antibodies in the blood of domestic animals further strengthen the potential role of domestic animals in the epidemiology of VL in Ethiopia. In mammalian hosts polymorphonuclear cells (PMN) and macrophages are the key immune cells influencing susceptibility or control of *Leishmania* infection. Thus to substantiate the possible role of cattle in VL transmission we investigate the permissiveness of bovine PMN and monocyte derived macrophages (MDM) for *Leishmania (L.) donovani* infection.

**Methods:** Whole blood was collected from pure Zebu (*Bos indicus*) and their cross with Holstein Friesian cattle. *L. donovani* (MHOM/ET/67/HU3) wild and episomal green fluorescent protein (eGFP) labelled stationary stage promastigotes were co-incubated with whole blood and MDM to determine infection of these cells. Engulfment of promastigotes by the cells and their transformation to amastigote forms in MDM was studied with direct microscopy. Microscopy and flow cytometry were used to measure the infection rate while PCR-RLFP was used to confirm the infecting parasite.

**Results:** *L. donovani* infected bovine whole blood PMN in the presence of plasma factors and all cellular elements. Morphological examinations of stained cytospin smears revealed that PMN engulfed promastigotes. Similarly, we were able to show that bovine MDM can be infected by *L. donovani*, which transformed to amastigote forms in the cells.

**Conclusions:** The in vitro infection of bovine PMN and MDM by *L. donovani* further strengthens the possibility that cattle might serve as source of *L. donovani* infection for humans.

**Keywords:** Bovine PMN, MDM, Zebu, Holstein Friesian, Reservoir host

## Background

Leishmaniasis are neglected tropical diseases caused by obligate intracellular protozoan parasites and are endemic in 98 countries, the majority of which are developing countries, with more than 350 million people at risk globally [1, 2]. The three main clinical forms of

leishmaniasis are: cutaneous leishmaniasis (CL), mucocutaneous leishmaniasis (MCL) and visceral leishmaniasis (VL or Kala-azar). Among these forms, VL is a systemic disease and fatal if left untreated. It is caused by the *Leishmania (L.) donovani* complex in East Africa and the Indian sub-continent and by *Leishmania infantum* in Europe, North Africa and Latin America [3, 4]. More than 90 % of global VL cases occur in six countries: India, Bangladesh, Sudan, South Sudan, Ethiopia and Brazil [1, 5]. Up to approximately 0.4 million new cases of VL have been estimated to

\* Correspondence: ttafess@gmail.com

<sup>6</sup>Department of Medical Laboratory Science, College of Health Sciences, Arsi University, P.O. Box 193, Asella, Ethiopia  
Full list of author information is available at the end of the article

occur per year [1]. In addition, apart from malaria, it is the most common parasitic disease and accounts for more than 50,000 deaths each year [6, 7].

Based on the source of infection, VL transmission is basically grouped as zoonotic and anthroponotic where transmission of *Leishmania* (*L.*) *donovani* infection has been considered as anthroponotic in endemic countries such as East Africa [2]. However, *L. donovani* infected wild and domestic animals were reported in several foci [2, 8, 9]. Epidemiological reports also indicated the increased risk of VL in humans living in close proximity to domestic animals [2, 8]. Additional studies have emerged which strengthen the notion that domestic animals may serve as parasite hosts or, possibly, as reservoirs for human *L. donovani* VL. A study from Nepal [8] detected VL parasite DNA in domestic animals like cows, buffaloes, and goats. They also showed that proximity of humans to goats in particular constituted the highest risk factor for human infection. Furthermore, a recent study in North-west Ethiopia detected *L. donovani* DNA from cattle and reported a positive correlation between anti-*Phlebotomus orientalis* (*P. orientalis*) saliva, and anti-*L. donovani* IgGs in cows, goats, and sheep [9]. In East Africa, *P. orientalis* is considered as the major vector for VL transmission [2].

Though parasitic DNA and antibodies against *L. donovani* were detected in domestic animals such as cattle, no study has yet demonstrated the presence of intact *L. donovani* parasites in vivo or in vitro in bovine cells in which these obligate intracellular parasites would be predicted to reside [10]. Therefore, we examined whether neutrophils and macrophages in bovine whole blood could be infected when exposed to live *L. donovani* promastigotes; such an observation would provide additional evidence supporting the hypothesis that domestic animals may serve as reservoir host for *L. donovani*. The infection rates of *L. donovani* in PMN and MDM were compared among whole blood of indigenous Zebu and exotic Holstein-Zebu cross-breeds.

## Methods

### *Leishmania* parasite and culture

*L. donovani* (MHOM/ET/67/HU3) [9, 11] wild and episomal green fluorescent protein (eGFP) labelled, were donated by Prof. Dr. Ger van Zandbergen, Paul-Ehrlich-Institute, Federal Institute for Vaccines and Biomedicines, Langen, Germany. The wild type promastigotes were cultured in RPMI 1640 supplemented with 10 % FCS, 100U/100ug/ml penicillin streptomycin and 2 mM L-glutamine. Hygromycin-B (sigma), 30 µg/ml, was supplemented for cultivation of eGFP labelled parasites [12].

### Whole blood collection

Whole blood was collected in EDTA tubes from pure Zebu/*Bos indicus* ( $n = 6$ ) and their cross with Holstein

Friesian ( $n = 6$ ). All animals were females, age of 6–8 years, and all tested negative for *Leishmania* exposure using immunochromatographic rapid diagnostic test (IT Leish, Bio-Rad). Whole blood cell count (WBC) and differential count for neutrophils and monocytes were performed using an automated hematology analyzer (Sysmex XT-1800i, Kobe, Japan).

### Whole blood and *L. donovani* stationary promastigote co-incubation

Whole blood (100 µl) was distributed in 1.5 ml eppendorf tubes and stationary phase promastigotes of *L. donovani* were added at  $1 \times 10^6/100$  µl. The tubes were then incubated in water bath at 37 °C for 22 h. Red blood cells were lysed by adding 500 µl 1x BD FACS lysing solution (BD Bioscience, USA) for 15 min at room temperature. The tubes were then centrifuged at 1000 xg for 8 min at room temperature, and then washed with 500 µl PBS (pH 7.2) with repeat centrifugation. After the supernatant was discarded, the cells were re-suspended in 400 µl PBS (pH 7.2). Cytospin smears from the cell suspension were stained with 10 % Giemsa staining solution and examined for PMN infection. Infection rate was calculated from the number of infected PMN per 200 PMN cells.

### Bovine peripheral blood mononuclear cells (PBMC) isolation

PBMC were isolated as previously described [13]. Isolated PBMCs were re-suspended in RPMI1640 medium supplemented with 100U/100ug/ml of penicillin/streptomycin, 10 % fetal bovine serum (FBS) and 2 mM L-glutamine (complete RPMI1640 medium).

### Bovine monocyte differentiation to macrophage

Isolated PBMCs were washed and re-suspended in polystyrene culture flasks containing complete RPMI 1640 medium with 1 % autologous plasma, and incubated at 37 °C, 5 % CO<sub>2</sub> for 1.5–2 h. The non-adherent cells were discarded and tubes were washed twice with pre-warmed sterile PBS (pH 7.2) containing 5 % complete medium (wash media). Cells were then suspended in 5 ml of complete RPMI 1640 medium and incubated at 37°C, 5 % CO<sub>2</sub>. Cell washing and complete RPMI 1640 medium replacement was repeated every two days up to 6–8 days. After 6–8 days of culture, cell were washed twice with pre-warmed sterile PBS and kept on ice for 30 min with gentle agitation to detach the majority of adherent cells. Additional adherent cells were removed by a cell scraper and 91–97 % of cells were viable when assessed by trypan blue exclusion.

The detached cells were washed twice with wash media and centrifugation at 200 × g for 10 min. Finally monocytes derived macrophages (MDM) were re-suspended in 5 ml of complete RPMI 1640 medium on ice.

### MDM infection with *L. donovani* stationary stage promastigotes

Viable MDMs were seeded in flat bottomed 24-well culture plates (Nalge nunc international, Denmark), 16 well chamber slides (Thermo Scientific™ Nunc™ Lab-Tek™, USA) and 1.5 ml eppendorf tubes in complete RPMI 1640 culture medium. The cultures were then incubated for 30 min at 37 °C, 5 % CO<sub>2</sub> to allow cell adherence. *Leishmania donovani* stationary promastigotes (wild type and eGFP labelled) were added to the cultures at a multiplicity of infection of 10 promastigotes to 1 MDM, and centrifuged at 200 xg for 5 min to promote contact. The plates were incubated for an additional 90 min at 37 °C, 5 % CO<sub>2</sub> and then washed carefully with warm sterile wash medium until extracellular promastigotes were removed, and then further washed with pre-warmed PBS for 2–3 times and air dried. The plates were fixed with absolute methanol for 5 min and stained with 10 % Giemsa staining solution for 10–15 min and examined under a binocular microscope. Tubes containing MDM infected with eGFP labelled *L. donovani* was analyzed using a BD FACS Calibur flow cytometry to measure the infection rate. At each infection time points, tubes were washed carefully with warm sterile wash medium until extracellular promastigotes were removed and a drop of the suspension was visualized under the microscope to confirm that extracellular parasites were removed from each tube.

### Co-incubation of infected whole blood cells with MDM

Bovine whole blood (100 µl) was distributed in 1.5 ml eppendorf tubes and 1x10<sup>6</sup>/100 µl stationary phase promastigotes of *L. donovani* were added and incubated for 22 h in a 37 °C water bath. Red blood cells were then lysed using a sterile 155 mM NH<sub>4</sub>Cl (ammonium chloride) solution for 15 min at room temperature, centrifuged at 1000 xg for 8 min and washed twice. Finally, pellets were re-suspended in 400 µl of RPMI complete medium. One hundred micro liters of the suspension was added to 24 well micro-plates (Nalge nunc international, Denmark) and chamber slide wells containing MDM. These were kept in a humidified incubator at 37 °C, 5 % CO<sub>2</sub> for up to 16 days. Half of the plates were examined microscopically after staining with a 10 % Giemsa staining solution, while the other half were kept in culture at 37 °C, 5 % CO<sub>2</sub>.

### Culturing *L. donovani* parasites from infected MDM

At the 16<sup>th</sup> day of culture, *L. donovani* infected MDM (as described above) were washed with warm wash medium and examined under an inverted microscope for any motile extracellular parasites. Then supernatants were replaced by 300 µl of liquefied Novy-MacNeal-Nicolle (NNN) medium or 300 µl complete RPMI 1640 medium and cultures were

incubated at 26 °C. The cultures were then examined under an inverted microscope every day for possible appearance of motile promastigotes.

### Polymerase chain reaction (PCR)-restriction fragment length polymorphism (RFLP) for species determination

Promastigotes cultured from in vitro infected bovine MDM were harvested by centrifugation at 1000 × g for 10 min at 4 °C. The genomic DNA was extracted by using Qiagen DNeasy for blood and tissue kits (QIAGEN GmbH, Germany) according to manufacturer's protocol. The extracted DNA was quantified using a spectrophotometer. Cultured stationary phase promastigotes of reference strains: *L. aethiopica* (MHOM/ET/72/L100), *L. donovani* (MHOM/IN80/DD8), *L. infantum* (MHOM/FR/LEM-75), *L. tropica* (MHOM/SU/74/K27) and *L. major* (MHOM/SU/73/5-A SKH) were extracted using the same kit. Confirmation of the *Leishmania* species was achieved by PCR amplification of the ribosomal internal transcribed spacer-1 (ITS-1) sequences and RFLP analysis as described before [14]. In brief, LISTR/L5.8S primer pairs were used at 1 µl of each primer (15 pmol) with 12.5 µl HotStar Taq Master Mix and 2 µl (20 ng/µl of DNA) in a total volume of 25 µl. The amplification conditions were 30 cycles at 94 °C for 30 s, at 50 °C for 30 s, and at 72 °C for 30 s. The ITS-1-amplicon was then digested with the restriction enzyme *HhaI*. The reaction mix contained 17 µl PCR product, 2 µl of 10× enzyme buffer and 1 µl of restriction enzyme, and after vortexing was incubated for 4 h at 37 °C [15]. The PCR products and RFLP fragments were visualized by a trans-illuminator.

### Ethical issues

Ethical approval was obtained from the institutional review board of the Armauer Hansen Research Institute, and consent was obtained from the owners of the domestic animals (Sebeta Agro Industry Farm) for the collection of blood samples by a veterinarian. International animal experimentation guidelines were followed.

## Results

### Complete blood cell and differential count

Prior to the infection experiments, white blood cell count (WBC) and differential cell counts for neutrophils and monocytes were analyzed from whole blood of the animals. The mean total WBC count (± standard error of the mean, SEM) per µl of blood for Zebu animals was 8.7 × 10<sup>3</sup>/µl (±0.46) and for Zebu-Holstein Friesian crossed animals was 9.5 × 10<sup>3</sup>/µl (±0.32), as shown in Table 1.

**Table 1** White blood cell count (WBC) and differential count for zebu and cross-breeds

S.No	Breed	WBC count $\times 10^3/\mu\text{l} \pm \text{SEM}$	Neutrophils count $\times 10^3/\mu\text{l} (\% \pm \text{SEM})$	Monocytes count $\times 10^2/\mu\text{l} (\% \pm \text{SEM})$
1	Zebu ( $n = 6$ )	$8.7 \pm 0.46$	$4.52 (51.9 \pm 1.28)$	$7.8 (8.91 \pm 1.35)$
2	Cross ( $n = 6$ )	$9.5 \pm 0.32$	$5.61 (58.85 \pm 2.55)$	$4.1 (4.22 \pm 1.22)$

The table depicts the mean count with standard error of the mean (SEM) for total WBC/ $\mu\text{l}$ , total neutrophil count/ $\mu\text{l}$  and total monocyte count/ $\mu\text{l}$  whole blood. The mean ( $\pm$  SEM) percentage of neutrophils and monocytes among total white cell count are also depicted

### Bovine PMN can be infected by *L. donovani*

Bovine PMN cells were observed to be infected by *L. donovani* after co-incubation for 22 h; as well amastigote like forms without flagella were observed. Such forms within PMN were observed more frequently at 22 h after infection compared with earlier time points. Not all PMN were equally infected, some PMN harboring many parasites per cell, others had 2–4 parasites per cell and still others with no observable parasites. The various morphology of the PMN is shown in Fig. 1.

Further microscopic examination of cytospin slides revealed a modest difference in *L. donovani* infection rates among PMN between the two cattle breeds, although these differences did not reach statistical significance (Fig. 2). Only 0–1 infected monocytes were observed per 200 PMN counted which would extrapolate to an infection rate of <1 % among all cells present (data not shown).

### Bovine MDM were readily infected with *L. donovani*

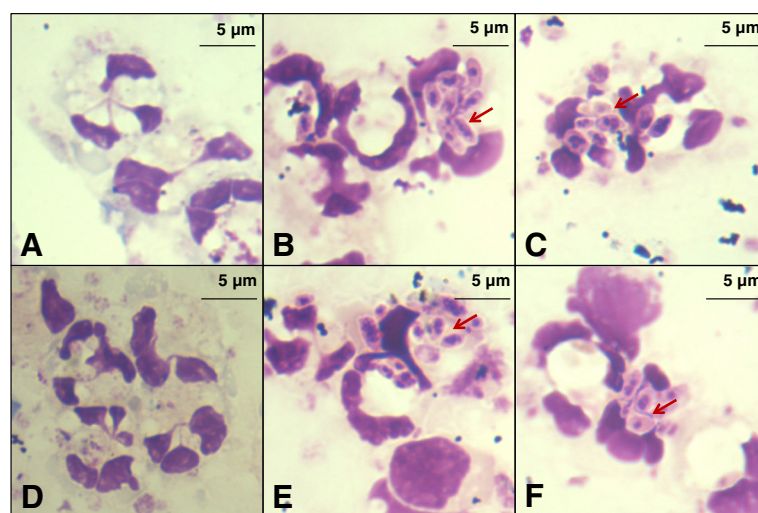
At 3 h of incubation, most *L. donovani* stationary stage promastigotes were observed to be attached to MDM via their flagella, whereas only a few were in the posterior

polar position. The number of externally attached promastigotes to MDM dramatically decreased after 24 h of co-incubation. At day 5 post-infection the infecting promastigotes had transformed to amastigotes (Fig. 3).

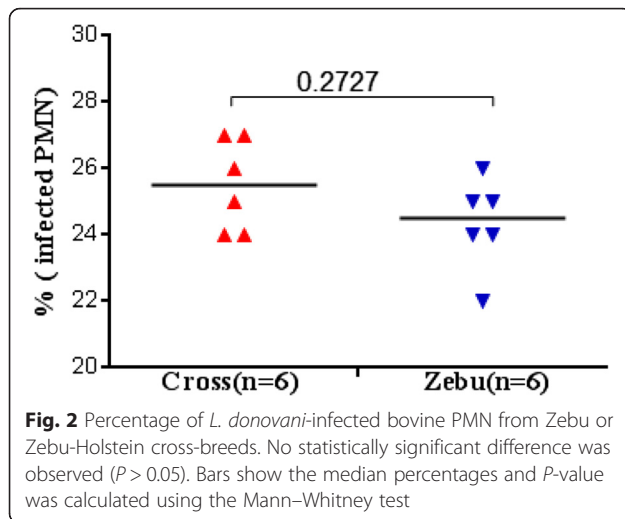
Quantitation of eGFP labelled *L. donovani* infection rates by flow cytometry revealed more infected MDM in the cross-breeds, 73.9 % at 24 h, and 77.8 % at 48 h, compared to the MDMs from pure Zebu, 47.16 % at 24 h and 49.55 % at 48 h (Fig. 4).

### Amastigote to promastigote differentiation

Bovine MDM liberated actively motile promastigotes by three days; these were observed to move in the culture media. At this time most amastigotes in the intact macrophages were seen to actively vibrate. After five days, procyclic promastigotes started to liberate by lysing the MDM and further multiplied in culture. Promastigotes were sub-cultured into liquid media, harvested at log-phase of the culture, and cryopreserved in liquid nitrogen. After one month, cryopreserved *Leishmania* isolates were thawed and sub-cultured in liquid media. All isolates grew well, illustrating their stability during cryopreservation (data not shown).



**Fig. 1** Whole blood and stationary phase promastigotes of *L. donovani* co-incubated for 22 h. Erythrocytes were lysed, and remaining cells were washed twice in PBS (pH 7.2). Cytospin smears from cell suspensions were stained with 10 % Giemsa staining solution, and examined for PMN infection by microscopic observation and enumeration of amastigote like forms inside them. PMN from Zebu-Holstein crossed animals are shown in panels (a-c), and from Zebu animals in panels (d-f). Panel a, d: uninfected PMN control; panels b, c, e, f: PMN infected with *L. donovani* parasites, designated by the red arrows, at 22 h of culture. The original photomicrographs were taken at 100x magnification



#### Bovine MDM can be infected by *L. donovani* through infected whole blood cells

When bovine MDMs were co-incubated with the infected whole blood cells, MDM infection was apparent confirming that MDM could also be infected through infected bovine whole blood cells (Fig. 5).

#### PCR-RFLP confirmed that *L. donovani* parasites infect bovine cells

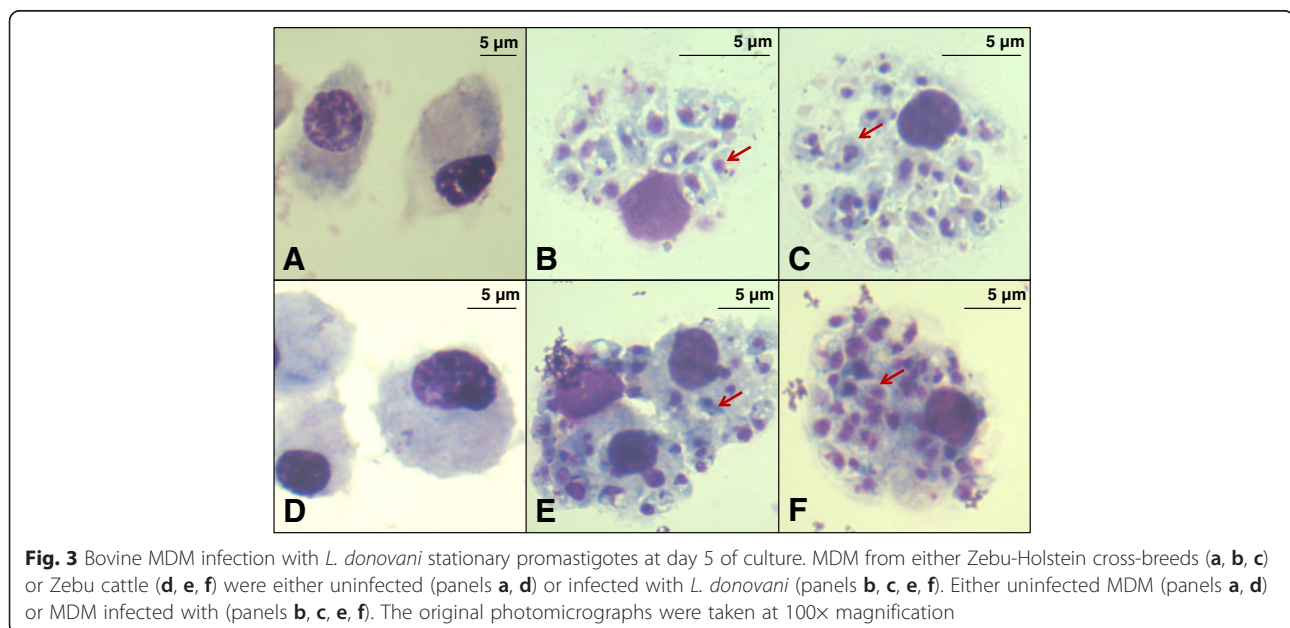
Amplification of parasite DNA with ITS-1 primers resulted in a ~328 bp band (Fig. 6a), and the digestion of the PCR products with *HhaI* (Fig. 6b) revealed a 328 bp band for both amastigote and promastigote samples from MDM cultures; a *L. donovani* reference sample resulted in an identical band.

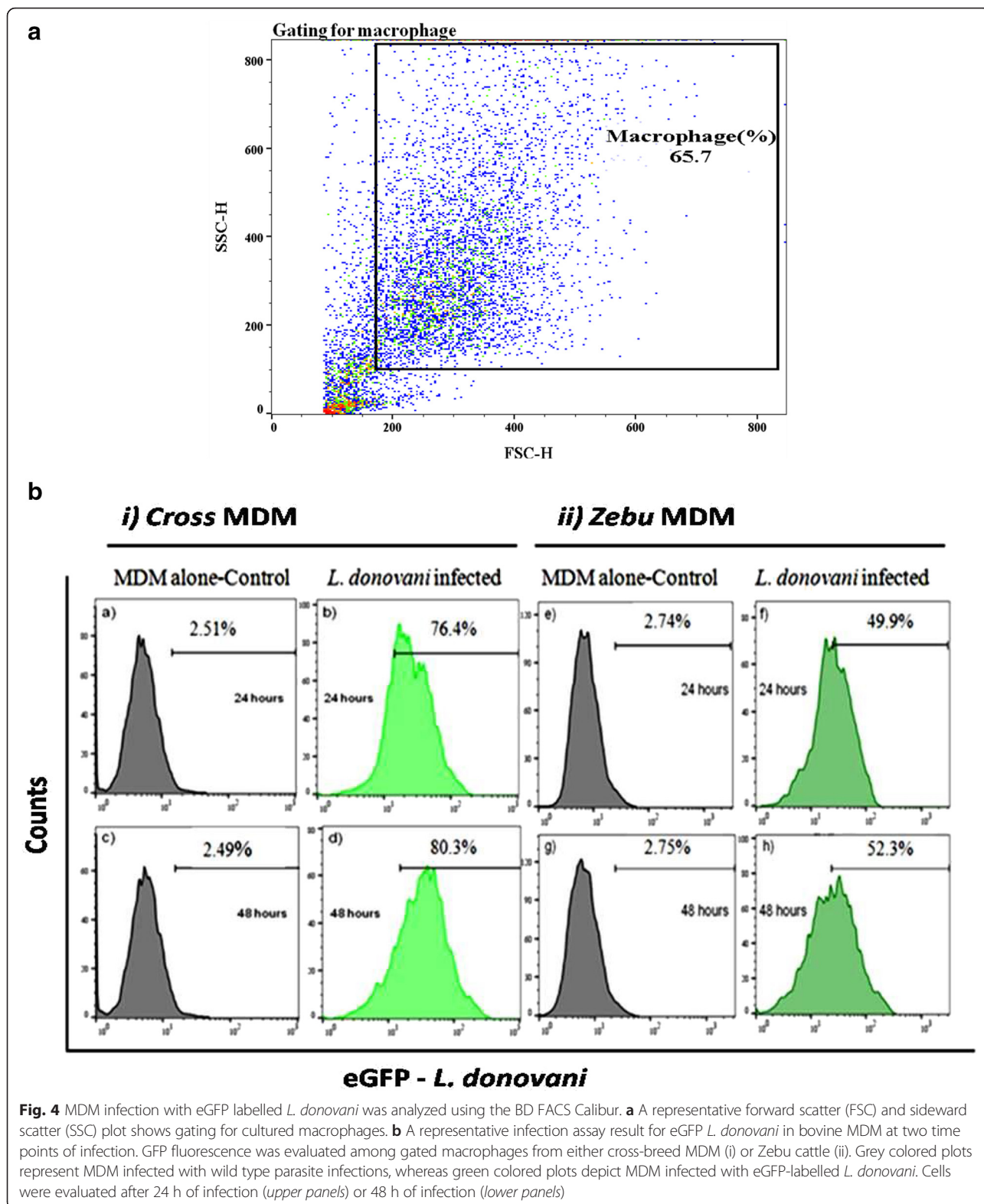
#### Discussion

Transmission of VL in Ethiopia is anthroponotic [2]. Recent studies have reported the probable involvement of domestic animals in the transmission of *L. donovani*, which commonly live with humans [8, 9]. None of these studies confirmed live *L. donovani* bodies in cells of these animals or showed in vitro if *L. donovani* parasites could infect the neutrophils and macrophages of these animals. In order to address these issues, a bovine whole blood assay simulating in vivo and in vitro infection of neutrophils and MDM was utilized. To the best of our knowledge, we show for the first time that bovine neutrophils and MDM can be infected when co-incubated with live *L. donovani* promastigotes. These findings support the hypothesis that cattle may serve as reservoir host for *L. donovani* parasites.

Neutrophils are the first cells to infiltrate the site of *Leishmania* promastigote infection, and help to reduce the initial parasite burden [16]. Neutrophils isolated from C57BL/6 mice peritoneal cavities efficiently internalized both amastigote and promastigote forms of the parasite *L. amazonensis* [16].

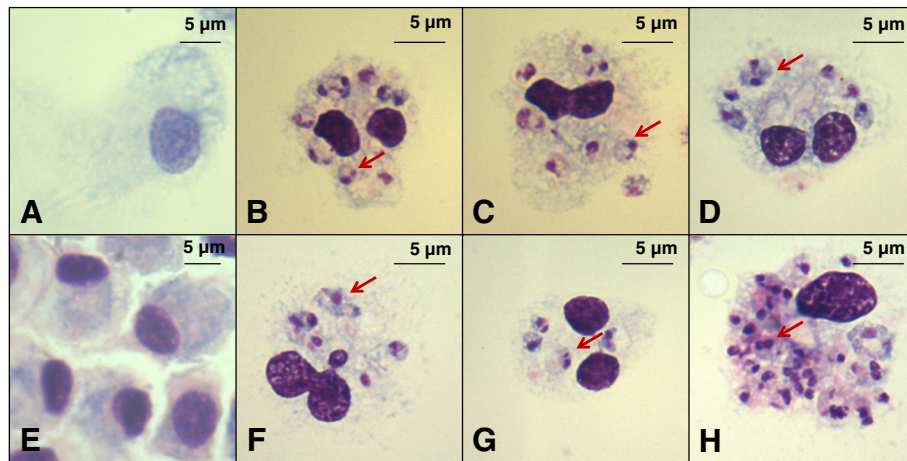
In mammals, neutrophils are important constituents of innate immune defence involved in phagocytosis [17] and various killing mechanisms to control pathogens [18, 19]. A recent study showed that upon stimulation, bovine neutrophils form neutrophil extracellular traps (NETs), kill bacteria in bovine blood [20]. In vitro studies using human neutrophils showed that *Leishmania* promastigotes can escape neutrophils killing activity [21]. Given the important role of neutrophil-leishmania interactions, there is a need for an appropriate bovine neutrophil assay for leishmania infection.





In this work, we also showed that *L. donovani* stationary promastigotes can infect bovine MDM from both Zebu and Zebu-Holstein Friesian cross-breed cattle, and

can be transformed into amastigotes in vitro. The infected bovine MDM were kept in culture for up to 16 days, and were found to maintain amastigotes. It is an established



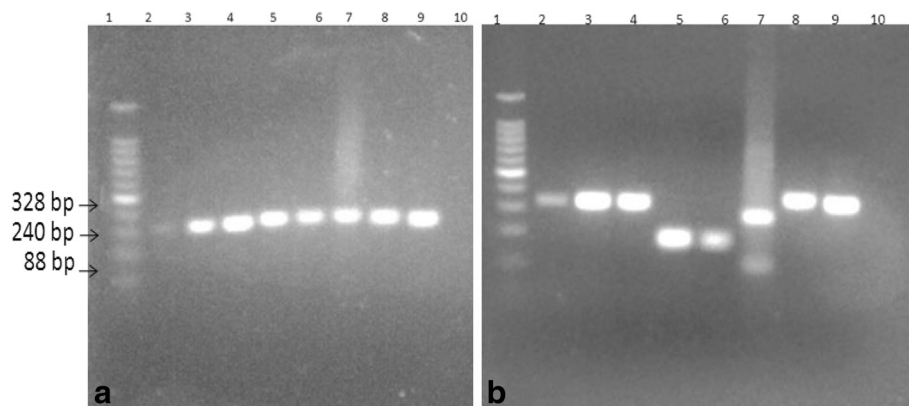
**Fig. 5** Co-incubation of infected whole blood cells (containing *L. donovani* amastigotes) with MDM successfully induced *Leishmania* infection in the MDM. MDM from cross-breeds (panels **a-d**) or Zebu cattle (panels **e-h**) were mixed with uninfected whole blood (panel **a, e**) or whole blood infected with *L. donovani* (panels **b, c, d, f, g, h**) whole blood. The red arrows depict amastigotes within infected MDM

fact that in their preferred mammalian host macrophages *Leishmania* spp. survive and multiply [22]. Experimentally we demonstrated two scenarios of MDM infection: 1) direct infection by stationary phase promastigotes, and 2) infection of MDM following coculturing of infected whole blood cells. A similar scenario has been documented in *L. major* and other intracellular microbe infections where apoptotic neutrophils are used as a Trojan horse to infect macrophages [23].

Despite the various reports indicating the *L. donovani* seropositivity [24] and isolation of parasite DNA from domestic animals living in VL foci area, and increased human risk to leishmaniasis when living in close proximity [8, 9], there is no evidence indicating the isolation of live parasite from cells of these animals. However,

*Leishmania siamensis*, a recently characterised species from outside the subgenera *Leishmania* and *Viannia*, has been isolated from cases of cutaneous bovine leishmaniasis from Switzerland [25]. Similarly, non-typed *Leishmania*-like organism was isolated from skin-infected calf in Zimbabwe [26] and cutaneous leishmaniasis in horses was reported in North America and Puerto Rico [27] where epidemiology of VL due to *L. donovani* is missing.

Naturally, *Leishmania* spp. are obligate intracellular parasites having dimorphic forms, the motile promastigotes form in the sand fly vector, and the non motile intracellular amastigotes form replicating within the macrophages of their mammalian hosts [2]. In our experiment, parasites in the amastigote stages in infected



**Fig. 6** PCR products after ITS-1 primer amplification and *HhaI* digestion of promastigote and amastigote DNA. Panel **a** depicts primer amplification products as follows. Lane 1: 100 bp Ladder; Lane 2: *L. donovani* reference strain; Lane 3: *L. donovani* promastigotes retrieved from MDM; Lane 4: *L. donovani* amastigote within MDM; Lane 5: *L. aethiopica* reference strain; Lane 6: *L. aethiopica* culture promastigotes; Lane 7: *L. major*; Lane 8: *L. tropica*; Lane 9: *L. infantum*; Lane 10: NC (TE buffer). Panel **b** illustrates *HhaI*-digested ITS-1 amplicons as follows. Lane 1: 100 bp ladder; Lane 2: *L. donovani* reference strain; Lane 3: *L. donovani* cultured promastigotes; Lane 4: *L. donovani* cultured amastigotes; Lane 5: *L. aethiopica* reference strain; Lane 6: *L. aethiopica* culture promastigotes; Lane 7: *L. major*; Lane 8: *L. tropica*; Lane 9: *L. infantum*; Lane 10: NC (TE buffer)

bovine MDM, when placed in fresh NNN/RPMI complete medium at 26 °C for 3–5 days, transformed into motile promastigotes. We could experimentally demonstrate the transformation of amastigotes to promastigotes and *vice versa* using bovine cells in the absence of vectors (sand flies).

Bovine mononuclear phagocyte function plays an important role in natural resistance to another disease model, bovine brucellosis [28]. Moreover, macrophages are known to synthesize natural resistance-associated macrophage protein (Nramp), an integral membrane phosphoglyco protein of 90–100 kDa which is expressed in the lysosomal compartment of macrophages and is rapidly recruited to the membrane of microbe-containing phagosomes formed in these cells [29]. At that site, Nramp functions as a pH-dependent efflux pump for  $\text{Fe}_2^+$  and  $\text{Mn}_2^+$ , restricting the availability of these essential metals for the engulfed microorganisms and contributing to the antimicrobial defenses of macrophages [30]. In mice, the naturally occurring glycine to aspartic acid mutation at position 169 (G169D) or experimentally induced mutations in Nramp cause susceptibility to a number of infections including *Leishmania* [31], suggesting Nramp plays an essential role in host defence against intracellular pathogens. Genetic polymorphisms in the gene encoding this protein have been reported to contribute to the resistance of African Zebu cattle to bovine tuberculosis [32]. Moreover, a study by Ameni *et al.* [33] with Zebu, Zebu-Holstein crosses, and Holstein cattle under identical field husbandry conditions in Ethiopia, showed both a higher prevalence and severity of bovine TB in the Holstein cattle compared with the Zebu or Zebu-Holstein crosses. However, in our current study of *L. donovani*, only modest differences were observed in susceptibility to infection of MDM among these genetically disparate cattle, although it is possible that these small differences could have reached statistical significance with a larger sample size. Further studies are thus required to ascertain the contribution of genetics in susceptibility of bovine *L. donovani* infections, as has been observed with *M. bovis* [34]. Although we demonstrated that *L. donovani* can infect PMN, we were unable to isolate pure bovine neutrophils to demonstrate if infected neutrophils could be used as a Trojan horse to infect MDM. Morphologically we evaluated the differentiation of bovine monocyte to macrophage under the microscope follow up, however the purity of the MDM population was not determined using surface staining.

## Conclusion

We demonstrated that *in vitro* *L. donovani* stationary promastigotes infect bovine PMNs and MDM, transform into intracellular amastigote forms which in turn develop into promastigotes upon temperature change to 26 °C. This finding further strengthens the notion that domestic

animals could potentially serve as source of infection to the sand fly vectors of visceral leishmaniasis due to *L. donovani*. Given the numbers of Ethiopians residing in VL endemic foci in close association with their cattle, this could represent a significant mechanism for the spread of the disease in the country. However, additional studies are needed to address this possibility.

## Competing interests

The authors declare that they have no competing interests.

## Authors' contributions

GT and KT conceived the idea; GT, KT, AAH designed the study; MA, EG, TL, AAA, UR commented on study design; GT, KT, AAH and AZ carried out lab experiment; GT drafted manuscript; GT, KT, AAH, MC, MA, EG, GZ, TL, AAA participated in the write up and critical review of the manuscript. All authors read and approved the final manuscript.

## Acknowledgements

This work was financially supported by Armauer Hansen Research Institute, Addis Ababa partially through Deutsche Forschungsgemeinschaft (DFG)/German Research Foundation grant for innate immunity in leishmaniasis (DFG Funding reference numbers: RI 1849/2-1, LA 1267/3-1 and ZA 533/5-1) and Ethiopian Public Health institute, Addis Ababa, Ethiopia. We would like to thank Dr Rawleigh Howe for language correction.

## Author details

<sup>1</sup>Ethiopia Public Health Institute, Leishmaniasis Research Laboratory, P.O. Box 1242, Addis Ababa, Ethiopia. <sup>2</sup>Armauer Hansen Research Institute, Leishmaniasis Research Laboratory, P.O. Box 1005, Addis Ababa, Ethiopia. <sup>3</sup>Department of Immunology, University of Regensburg, Franz-Josef-Strauß-Allee 11, D-93042 Regensburg, Germany. <sup>4</sup>Paul-Ehrlich-Institute, Federal Institute for Vaccines and Biomedicines, Langen, Germany. <sup>5</sup>Institute for Medical Microbiology and Hygiene, University of Lübeck, Ratzeburger Allee 160, D-23560 Lübeck, Germany. <sup>6</sup>Department of Medical Laboratory Science, College of Health Sciences, Arsi University, P.O. Box 193, Asella, Ethiopia.

Received: 2 September 2015 Accepted: 9 March 2016

Published online: 18 April 2016

## References

- Alvar J, Vélez ID, Bern C, Herrero M, Desjeux P, Cano J, Jannin J, den Boer M. Leishmaniasis worldwide and global estimates of its incidence. *PLoS One*. 2012;7:e35671.
- WHO. Control of the leishmaniasis. *WHO Tech Rep Ser*. 2010;949(March):22–6.
- Lukes J, Mauricio IL, Schönian G, Dujardin J-C, Soteriadou K, Dedet J-P, Kuhls K, Tintaya WQ, Jirků M, Chocholová E, Haralambous C, Pratlong F, Oborník M, Horák A, Ayala FJ, Miles MA. Evolutionary and geographical history of the *Leishmania donovani* complex with a revision of current taxonomy. *Proc Natl Acad Sci U S A*. 2007;104:9375–80.
- Mauricio IL, Stothard JR, Miles M. The strange case of *Leishmania chagasi*. *Parasitol Today*. 2000;16:188–9.
- Chappuis F, Sundar S, Hailu A, Ghalib H, Rijal S, Peeling RW, Alvar J, Boelaert M. Visceral leishmaniasis: what are the needs for diagnosis, treatment and control? *Nat Rev Microbiol*. 2007;5:873–82.
- Desjeux P. Leishmaniasis: current situation and new perspectives. *Comp Immunol Microbiol Infect Dis*. 2004;27:305–18.
- Guilbert JJ. The world health report 2002 - reducing risks, promoting healthy life. *Educ Heal*. 2003;16:230.
- Bhattarai NR, Van der Auwera G, Rijal S, Picado A, Speybroeck N, Khanal B, De Doncker S, Das ML, Ostyn B, Davies C, Coosemans M, Berkvens D, Boelaert M, Dujardin J-C. Domestic animals and epidemiology of visceral leishmaniasis, Nepal. *Emerg Infect Dis*. 2010;16:231–7.
- Rohousova I, Talmi-Frank D, Kostalova T, Polanska N, Lestinaova T, Kassahun A, Yasur-Landau D, Maia C, King R, Votycka J, Jaffe CL, Warburg A, Hailu A, Volf P, Baneth G. Exposure to *Leishmania* spp. and sand flies in domestic animals in northwestern Ethiopia. *Parasit Vectors*. 2015;8:360.



10. Hsiao C, Uenob N, Shaoc J, Kristin R, Moorec K, John E, Mary E. The effects of macrophage source on the mechanism of phagocytosis and intracellular survival of *Leishmania*. *Changes*. 2012;29:997–1003.
11. Gadisa E, Kuru T, Genet A, Engers H, Aseffa A, Gedamu L. *Leishmania donovani* complex (Kinetoplastida, Trypanosomatidae): comparison of deoxyribonucleic acid based techniques for typing of isolates from Ethiopia. *Exp Parasitol*. 2010;126:203–8.
12. Zhang W, Matlashewski G. CRISPR-Cas9-mediated genome editing in *Leishmania donovani*. *MBio*. 2015;6:1–14.
13. Ameni G, Cockle P, Lyashchenko K, Vordermeier M. T-cell and antibody responses to mycobacterial antigens in tuberculin skin-test-positive bos indicus and bos taurus cattle in Ethiopia. *Vet Med Int*. 2012;2012:457872.
14. Schönian G, Akuffo H, Lewin S, Maasho K, Nylén S, Pralong F, Eisenberger CL, Schnur LF, Presber W. Genetic variability within the species *Leishmania aethiops* does not correlate with clinical variations of cutaneous leishmaniasis. *Mol Biochem Parasitol*. 2000;106:239–48.
15. Schönian G, Nasereddin A, Dinse N, Schweynoch C, Schallig H, Presber W, Jaffe C. PCR diagnosis and characterization of *Leishmania* in local and imported clinical samples. *Diagn Microbiol Infect Dis*. 2003;47:349–58.
16. Carlsen ED, Hay C, Henard CA, Popov V, Garg NJ, Soong L. *Leishmania amazonensis* amastigotes trigger neutrophil activation but resist neutrophil microbicidal mechanisms. *Infect Immun*. 2013;81:3966–74.
17. Bochsler P, Slauson D. Inflammation and repair of tissue. In: Slauson DO, Cooper BJ, editors. *Mechanisms of the disease: A Textb Comp Gen Pathol*. 3rd ed. St. Louis: Mosby an affiliate of Elsevier Science; 2002. p. 198–206.
18. Smith G. Neutrophils. In: Feldman BF, Zinkl JG, Jain NC, editors. *Schalm's Veterinary Hematology*. Philadelphia: Lippincott Williams & Wilking; 2000. p. 281–96.
19. Segal A. How neutrophils kill microbes. *Annu Rev Immunol*. 2005;23:197–223.
20. John DL, Timothy AR, Jesse PG, Ronald LH. Neutrophil extracellular trap formation by bovine neutrophils is not inhibited by milk. *Vet Immunol Immunopathol*. 2006;113:248–55.
21. Guimaraes-Costa AB, DeSouza-Vieira TS, Paletta-Silva R, Freitas-Mesquita AL, Meyer-Fernandes JR, Saraiva EM. 3'-nucleotidase/nuclease activity allows *Leishmania* parasites to escape killing by neutrophil extracellular traps. *Infect Immun*. 2014;82:1732–40.
22. Underhill A. Mechanisms of phagocytosis in macrophages. *Annu Rev Immunol*. 1999;17:593–623.
23. Laskay T, van Zandbergen G, Solbach W. Neutrophil granulocytes -Trojan horses for *Leishmania major* and other intracellular microbes? *Trends Microbiol*. 2003;11:210–4.
24. Alam MS, Ghosh D, Khan GM, Islam MF. Survey of domestic cattle for anti-*Leishmania* antibodies and *Leishmania* DNA in a visceral leishmaniasis endemic area of Bangladesh. *BMC Vet Res*. 2011;7:27.
25. Lobsiger L, Müller N, Schweizer T, Frey CF, Wiederkehr D, Zumkehr B, Gottstein B. An autochthonous case of cutaneous bovine leishmaniasis in Switzerland. *Vet Parasitol*. 2010;169:408–14.
26. Dubey JP, Bwangamoi O, Courtney SP, Fritz DL. *Leishmania*-like protozoan associated with dermatitis in cattle. *J Parasitol*. 1998;84:865–7.
27. Segales J, Dunstan RW. Cutaneous Leishmaniasis in two horses. *Vet Pathol*. 1996;33:731–4.
28. Price RE, Templeton JW, Smith R, Adams LG. Ability of mononuclear phagocytes from cattle naturally resistant or susceptible to brucellosis to control in vitro intracellular survival of *Brucella abortus*. *Infect Immun*. 1990;58:879–86.
29. Searle S, Bright NA, Roach TI, Atkinson PG, Barton CH, Meloen RH, Blackwell JM. Localisation of Nramp1 in macrophages: modulation with activation and infection. *J Cell Sci*. 1998;111:2855–66.
30. Czachorowski M, Lam-yuk-tseung S, Cellier M, Gros P. Transmembrane topology of the mammalian Slc11a2 iron transporter. *Biochemistry*. 2009;48:8422–34.
31. Cellier MF, Courville P, Campion C. Nramp1 phagocyte intracellular metal withdrawal defense. *Microbes Infect*. 2007;9:1662–70.
32. Kadarmideen H, Ali A, Thomson P, Müller B, Zinsstag J. Polymorphisms of the SLC11A1 gene and resistance to bovine tuberculosis in African Zebu cattle. *Anim Genet*. 2011;42:656–8.
33. Ameni G, Aseffa A, Engers H, Young D, Gordon S, Hewinson G, Vordermeier M. High prevalence and increased severity of pathology of bovine tuberculosis in holsteins compared to zebu breeds under field cattle husbandry in central Ethiopia. *Clin Vaccine Immunol*. 2007;14:1356–61.
34. Kramnik I, Dietrich WF, Demant P, Bloom BR. Genetic control of resistance to experimental infection with virulent *Mycobacterium tuberculosis*. *Proc Natl Acad Sci U S A*. 2000;97:8560–5.

Submit your next manuscript to BioMed Central and we will help you at every step:

- We accept pre-submission inquiries
- Our selector tool helps you to find the most relevant journal
- We provide round the clock customer support
- Convenient online submission
- Thorough peer review
- Inclusion in PubMed and all major indexing services
- Maximum visibility for your research

Submit your manuscript at  
[www.biomedcentral.com/submit](http://www.biomedcentral.com/submit)

