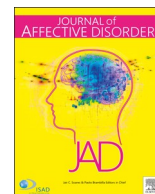




Since January 2020 Elsevier has created a COVID-19 resource centre with free information in English and Mandarin on the novel coronavirus COVID-19. The COVID-19 resource centre is hosted on Elsevier Connect, the company's public news and information website.

Elsevier hereby grants permission to make all its COVID-19-related research that is available on the COVID-19 resource centre - including this research content - immediately available in PubMed Central and other publicly funded repositories, such as the WHO COVID database with rights for unrestricted research re-use and analyses in any form or by any means with acknowledgement of the original source. These permissions are granted for free by Elsevier for as long as the COVID-19 resource centre remains active.



Review article

Impact of coronavirus syndromes on physical and mental health of health care workers: Systematic review and meta-analysis



Gonzalo Salazar de Pablo^{a,b,*}, Julio Vaquerizo-Serrano^{a,b}, Ana Catalan^{a,c}, Celso Arango^b, Carmen Moreno^b, Francisco Ferre^d, Jae Il Shin^e, Sarah Sullivan^f, Natascia Brondino^g, Marco Solmi^{a,h,i,j}, Paolo Fusar-Poli^{a,g,k,l}

^a Early Psychosis: Interventions and Clinical-detection (EPIC) Lab, Department of Psychosis Studies, Institute of Psychiatry, Psychology & Neuroscience, King's College London, London, UK

^b Institute of Psychiatry and Mental Health, Department of Child and Adolescent Psychiatry, Hospital General Universitario Gregorio Marañón School of Medicine, Universidad Complutense, Instituto de Investigación Sanitaria Gregorio Marañón (IISGM), CIBERSAM, Madrid, Spain

^c Mental Health Department, Biocruces Bizkaia Health Research Institute, Basurto University Hospital. Facultad de Medicina y Odontología, Campus de Leioa, University of the Basque Country, UPV/EHU, Bizkaia, Spain

^d Institute of Psychiatry and Mental Health, Hospital General Universitario Gregorio Marañón School of Medicine, Universidad Complutense, Madrid, Spain

^e Department of Pediatrics, Yonsei University College of Medicine, Seoul, Republic of Korea

^f Centre for Academic Mental Health, Bristol Medical School, University of Bristol, Bristol, UK

^g Section of Psychiatry, Department of Brain and Behavioral Sciences, University of Pavia, Pavia, Italy

^h Department of Brain and Behavioral Sciences, University of Pavia, Pavia, Italy

ⁱ Neurosciences Department, University of Padua, Padua, Italy

^j Padua Neuroscience Center, University of Padua, Padua, Italy

^k OASIS service, South London and Maudsley NHS Foundation Trust, London, UK

^l National Institute for Health Research, Maudsley Biomedical Research Centre, South London and Maudsley NHS Foundation Trust, London, UK

ARTICLE INFO

Keywords:

Coronavirus

COVID-19

SARS

MERS

Health care workers

Meta-analysis

ABSTRACT

Background: Health care workers (HCW) are at high risk of developing physical/mental health outcomes related to coronavirus syndromes. Nature and frequency of these outcomes are undetermined.

Methods: PRISMA/MOOSE-compliant (PROSPERO-CRD42020180205) systematic review of Web of Science/grey literature until 15th April 2020, to identify studies reporting physical/mental health outcomes in HCW infected/exposed to Severe Acute Respiratory Syndrome -SARS-, Middle East Respiratory Syndrome -MERS-, Novel coronavirus -COVID-19-. Proportion random effect meta-analyses, I^2 statistic, quality assessment and sensitivity analysis.

Results: 115 articles were included ($n = 60,458$ HCW, age 36.1 ± 7.1 , 77.1% female). Physical health outcomes: 75.9% HCW infected by SARS/MERS/COVID-19 reported fever (95%CI = 65.9–83.7%, $k = 12$, $n = 949$), 47.9% cough (95%CI = 39.2–56.8%, $k = 14$, $n = 970$), 43.6% myalgias (95%CI = 31.9–56.0%, $k = 13$, $n = 898$), 42.3% chills (95%CI = 20.2–67.9%, $k = 7$, $n = 716$), 41.2% fatigue (95%CI = 18.2–68.8%, $k = 6$, $n = 386$), 34.6% headaches (95%CI = 23.1–48.2%, $k = 11$, $n = 893$), 31.2% dyspnoea (95%CI = 23.2–40.5%, $k = 12$, $n = 1003$), 25.3% sore throat (95%CI = 18.8–33.2%, $k = 8$, $n = 747$), 22.2% nausea/vomiting (95%CI = 14.9–31.8%, $k = 6$, $n = 662$), 18.8% diarrhoea (95%CI = 11.9–28.4%, $k = 9$, $n = 824$). Mental health outcomes: 62.5% HCW exposed to SARS/MERS/COVID-19 reported general health concerns (95%CI = 57.0–67.8%, $k = 2$, $n = 2254$), 43.7% fear (95%CI = 33.9–54.0%, $k = 4$, $n = 584$), 37.9% insomnia (95%CI = 30.9–45.5%, $k = 6$, $n = 5067$), 37.8% psychological distress (95%CI = 28.4–48.2%, $k = 15$, $n = 24,346$), 34.4% burnout (95%CI = 19.3–53.5%, $k = 3$, $n = 1337$), 29.0% anxiety features (95%CI = 14.2–50.3%, $k = 6$, $n = 9191$), 26.3% depressive symptoms (95%CI = 12.5–47.1%, $k = 8$, $n = 9893$), 20.7% post-traumatic stress disorder features (95%CI = 13.2–31%, $k = 11$, $n = 3826$), 16.1% somatisation (95%CI = 0.2–96.0%, $k = 2$, $n = 2184$), 14.0% stigmatisation feelings (95%CI = 6.4–28.1%, $k = 2$, $n = 411$).

Limitations: Limited amount of evidence for some outcomes and suboptimal design in several studies included.

Conclusions: SARS/MERS/COVID-19 have a substantial impact on the physical and mental health of HCW, which should become a priority for public health strategies.

* Corresponding author at: Early Psychosis: Interventions and Clinical-detection (EPIC) Lab, Department of Psychosis Studies, Institute of Psychiatry, Psychology & Neuroscience, King's College London, London, UK

E-mail address: gonzalo.salazar_de_pablo@kcl.ac.uk (G. Salazar de Pablo).

<https://doi.org/10.1016/j.jad.2020.06.022>

Received 13 May 2020; Received in revised form 17 June 2020; Accepted 22 June 2020

Available online 25 June 2020

0165-0327/ © 2020 Elsevier B.V. All rights reserved.

1. Introduction

The novel "SARS-CoV-2" or "2019-nCoV" coronavirus disease (COVID-19) identified in Wuhan is not the first coronavirus to have quickly spread and caused havoc in the 21st century. The SARS-CoV identified in Canton (Severe Acute Respiratory Syndrome, SARS hereby), became the first zoonosis of this century (2002) (Chen et al., 2006), followed by the MERS-CoV (Middle East Respiratory Syndrome MERS hereby), identified in 2012 in Saudi Arabia. These three syndromes can be transmitted by mildly ill, pre-symptomatic or asymptomatic infected individuals (Shah et al., 2020) and are putting health-care systems under unprecedented pressure (Holmes et al., 2020; Shah et al., 2020; Xiang et al., 2020). Half of the general population rated the psychological impact of the COVID-19 outbreak as being moderate or severe (Wang et al., 2020). However, the World Health Organisation has identified health care workers (HCW) as a group at particular risk of developing a wide range of physical/mental problems as a result of working directly or indirectly with COVID-19 patients (Koh et al., 2003). HCW are particularly exposed to the threat of transmission (Huang et al., 2020) because of their frontline work with patients with high viral loads and suboptimal personal protection equipment (Christian et al., 2004; Ehrlich et al., 2020; Nam et al., 2017). At the same time, severe stress, high emotional load, long working hours, concerns of being infected or infecting their relatives, lack of adequate support in the working environment and lack of effective supportive treatments can affect HCW's mental health (Moazzami et al., 2020; Vieta et al., 2020).

Despite the profound impact of these syndromes on HCW's physical/mental health, to our knowledge, no systematic review has comprehensively appraised the burden (type and frequency) of these outcomes in the current literature. Profiling the impact of SARS/MERS/COVID-19 on the HCW's health is pivotal to inform detection, monitoring and preventive/treatment strategies. The current systematic review and meta-analysis provide the first quantitative evidence synthesis of the impact of SARS/MERS/COVID-19 on physical and mental health outcomes of HCW.

2. Methods

This study (study protocol registered on PROSPERO-CRD42020180205) was conducted in accordance with "Preferred Reporting Items for Systematic Reviews and Meta-Analyses" (PRISMA) (Moher et al., 2009) (eTable I) and "Meta-analyses Of Observational Studies in Epidemiology" (MOOSE) checklist (Stroup et al., 2000) (eTable II), following "EQUATOR Reporting Guidelines" (Altman et al., 2008).

2.1. Search strategy and selection criteria

A systematic literature search was carried out by two independent researchers (GSP, AC) using the following keywords: "SARS" OR "COV" OR "coronavirus" OR "MERS" OR "Orthocoronavirinae" OR "Severe Acute Respiratory Syndrome" OR "Middle East Respiratory Syndrome" OR "CoV-19" OR "SARS-CoV" OR "SARS-CoV-2" OR "2019 nCoV" OR "2019nCoV" OR "2019 novel coronavirus" OR "COVID 19" OR "new coronavirus" OR "novel coronavirus" OR "SARS CoV-2" OR "Wuhan coronavirus" OR "COVID 19" OR "2019-nCoV" AND "professionals" OR "worker*" OR "doctor*" OR "nurse*" OR "occupation*" OR "employee*" OR "healthcare provider*" OR "healthcare worker*" OR "healthcare employee*" OR "personnel" OR "emergency worker" OR "paramedic*". First, Web of Science database (Clarivate Analytics) was searched, incorporating the Web of Science Core Collection, the BIOSIS Citation Index, the KCI-Korean Journal Database, MEDLINE®, the Russian Science Citation Index, and the SciELO Citation Index, from inception until 15th April 2020. Second, given that this field is rapidly developing, we searched the preprint servers medRxiv, psyArXiv and

bioRxiv for the terms 'coronavirus' or 'COVID-19' from 1st January 2020 until 15th April 2020. Third, we searched references from included studies and reviews that were screened during the literature search. We screened articles identified as abstracts, and after excluding those that did not meet our inclusion criteria, the full texts of the remaining articles were assessed for eligibility and decisions made about their inclusion.

2.2. Condition and individuals being studied

Inclusion criteria for the systematic review were a) individual studies with primary data (including letters, commentaries, qualitative studies and conference proceedings) or grey literature, b) focusing on HCW (including physicians, nurses, trainees and other health professionals) exposed to or infected by SARS/MERS/COVID-19 (see below), c) reporting physical or mental health outcomes, d) sample size > 5 and e) written in English. Exclusion Criteria were a) reviews, clinical cases, or study protocols, b) reporting outcomes on populations other than HCW, including the general population, c) with sample size ≤ 5. For the meta-analysis, additional inclusion criteria were a) reporting meta-analysable data and b) non-overlapping samples (overlap was determined by looking at the type of population and country in which the study was carried, and the study with the largest sample was then selected).

2.3. Data extraction

Two researchers (GSP, JVS) independently extracted data from all the included studies. The two databases were then cross-checked, and discrepancies were resolved through consensus under the supervision of a senior researcher (PFP). A summary of selected variables included: first author and year of publication, country, topic investigated, HCW category involved, sample size, age (mean ± SD), sex (% female), physical/mental health, data source, quality assessment (see below) and key findings.

2.4. Risk of bias (quality) assessment

Risk of bias was assessed using a modified version of the Mixed Methods Appraisal Tool (MMAT) as per protocol (detailed in eMethods 1). MMAT is considered the best and most comprehensive tool available for appraising multi-method studies (Behghadami et al., 2019).

2.5. Strategy for data synthesis

First, we provided a systematic synthesis (reported in the supplementary material) of the findings from the included studies structured around physical/mental health outcomes, and type of coronavirus syndromes (MERS vs SARS vs COVID-19). Second, we performed meta-analyses using, as primary effect size, the proportion (% and SE) of physical or mental health outcomes in HCW with a SARS/MERS/COVID-19 infection or exposed to SARS/MERS/COVID-19 (for details on the definition of the infection/exposure status see eMethods 2). The meta-analyses were split across physical and mental health outcomes—as operationalised by each individual study—and included both pooled and stratified estimates across SARS vs MERS vs COVID-19. Heterogeneity among studies was assessed using the Q statistic, with the proportion of the total variability in effect size estimates evaluated using the I² index (with an I²>50% representing significant heterogeneity) (Lipsey and Wilson, 2000). Random-effect models were employed as heterogeneity was expected to be high (DerSimonian and Laird, 1986). Publication biases were not assessed because studies included in proportion meta-analyses are non-comparative; thus, there are no "negative" or "undesirable" results or study characteristics like significant levels that may have biased publications (Maulik et al., 2011). We further conducted meta-analytical regression analyses (when

data were available) to estimate the association between the analysed outcomes and: (i) sex, (ii) age, (iii) study quality, (iv) professional category (physicians vs nurses vs multi-professional samples) and (v) data source (self-administered questionnaires/surveys vs interviews/evaluations). All analyses were conducted using Comprehensive Meta-Analysis (CMA) V3 (Borenstein et al., 2013).

3. Results

The literature search yielded 2,925 citations (2,923 through electronic database searching and 2 through manual search), which were screened for eligibility; 324 articles were assessed in full text, and 209 were excluded (reasons for exclusion are detailed in eTable III). The final database for the systematic included 115 studies (Fig. 1): 65 (56.5%) focused on SARS, 26 (22.6%) on MERS and 24 (20.9%) on COVID-19; 11 (9.6%) were qualitative studies, 3 (2.6%) non-randomised interventional studies and 101 (87.8%) quantitative studies. The full database included 60,458 HCW (35,905 SARS; 5,246 MERS; 19,307 COVID-19). The total sample size of the included studies ranged from 7 (Almutairi et al., 2018; Memish et al., 2013) to 10,511 (Koh et al., 2005) HCW (eTable IV-VI). The mean age of the sample was 36.1 ± 7.1 years ranging from 23 (Wong et al., 2004b) to 69.4 (Ran et al., 2020) years; 77.1% were female. 90 (78.3%) studies included HCW from Asia, 18 (15.7%) HCW from America, 4 (3.5%) from Europe and 3% (2.6%)

from more than one continent. In 64 (55.7%) studies, HCW completed self-administered questionnaires/surveys; in 51 (44.3%) studies, HCW were evaluated or interviewed by a professional. Most studies (85; 73.9%) investigated more than one HCW category; 19 studies (16.5%) focused on nurses, 9 (7.8%) on physicians, 1 (0.9%) on medical students and 1 (0.9%) on social workers. Forty studies were included in the meta-analysis (Fig. 1), focusing on physical health outcomes in HCW infected by SARS/MERS/COVID-19 and mental health outcomes in HCW exposed to SARS/MERS/COVID-19 (see eTables IV-VI).

3.1. Physical health outcomes in HCW with SARS/MERS/COVID-19 infection

The top 10 most frequently reported physical health symptoms in those with SARS/MERS/COVID-19 infection are displayed in Table 1, Fig. 2 and systematically described in the eTables IV-VI. The meta-analysis revealed that 75.9% of HCW with SARS/MERS/COVID-19 infection reported fever (95%CI = 65.9–83.7%, $k=12$, $n=949$), 47.9% cough (95%CI = 39.2–56.8%, $k=14$, $n=970$), 43.6% myalgias (95%CI = 31.9–56.0%, $k=13$, $n=898$), 42.3% chills (95%CI = 20.2–67.9%, $k=7$, $n=716$), 41.2% fatigue (95%CI = 18.2–68.8%, $k=6$, $n=386$), 34.6% headaches (95%CI = 23.1–48.2%, $k=11$, $n=893$), 31.2% dyspnoea (95%CI = 23.2–40.5%, $k=12$, $n=1003$), 25.3% sore throat

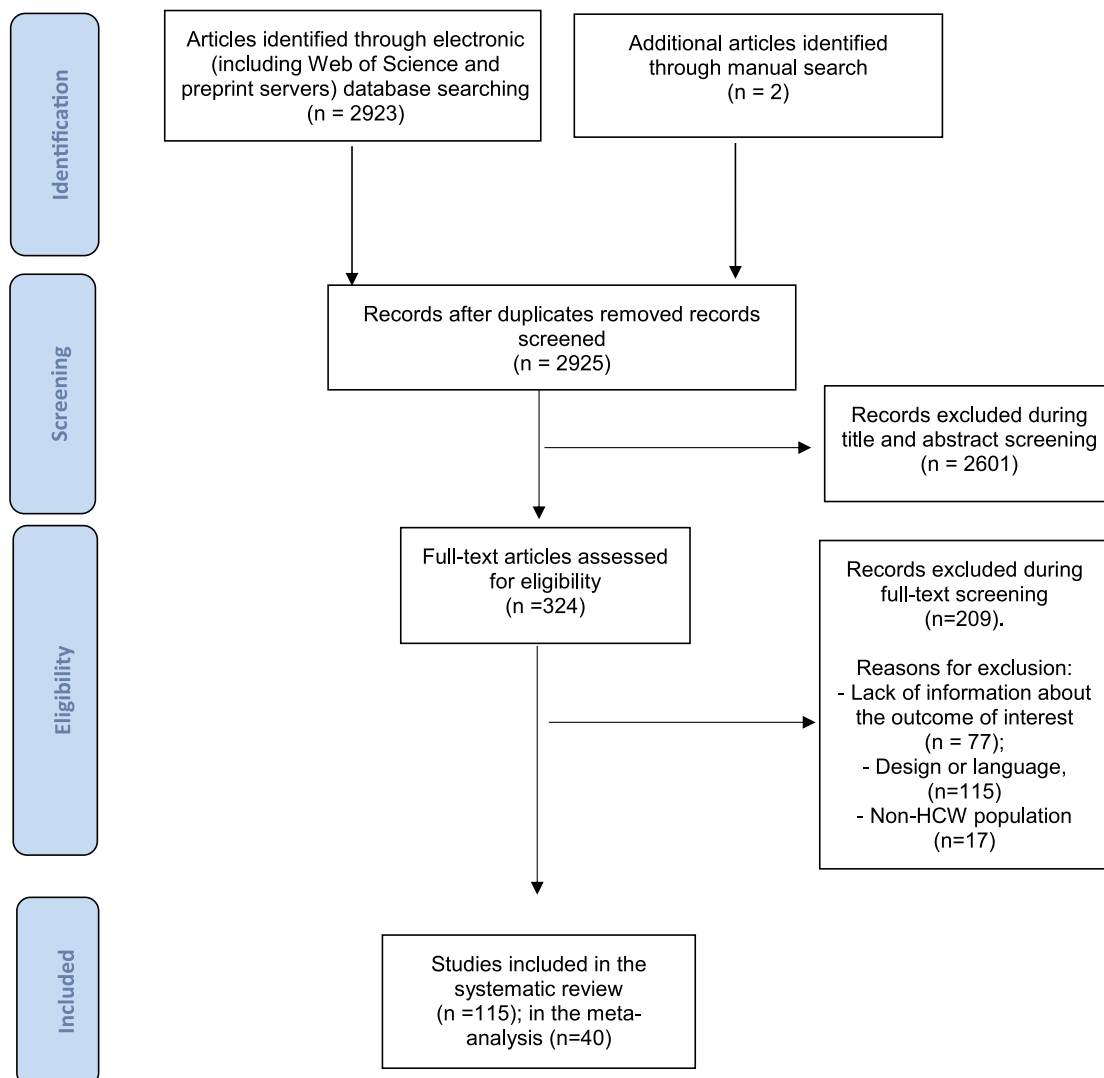


Fig. 1. PRISMA 2009 Flow Diagram.

Table 1
Meta-analytical proportion of physical health outcomes in HCW with SARS/MERS/COVID-19 infection.

Symptom	Group	No. of studies	Sample size	Random effects model		z Score	P	Test for Heterogeneity			Between-group heterogeneity	
				Proportion	95 % CI			Q	I ²	P	Q	P
Chills	Any coronavirus	7	716	0.423	0.202 0.679	-0.573	0.566	149.675	95.991	<0.001	46.067	<0.001
	SARS	4	315	0.738	0.560 0.862	2.558	0.011	16.363	81.666	0.001		
	MERS	1	283	0.300	0.249 0.356	-4.521	<0.001	<0.001	<0.001	1.000		
	COVID-19	2	118	0.045	0.019 0.101	-6.832	<0.001	0.117	<0.001	0.733		
Cough	Any coronavirus	14	970	0.479	0.392 0.568	-0.452	0.651	72.720	82.125	<0.001	2.803	0.246
	SARS	5	329	0.368	0.234 0.527	-1.635	0.102	20.764	80.736	<0.001		
	MERS	4	341	0.487	0.271 0.708	-0.111	0.912	15.340	80.443	0.002		
	COVID-19	5	300	0.562	0.397 0.715	0.732	0.464	29.397	86.393	<0.001		
Diarrhoea	Any coronavirus	9	824	0.188	0.119 0.284	-5.332	<0.001	59.340	86.518	<0.001	4.814	0.090
	SARS	2	209	0.274	0.083 0.610	-1.343	0.179	3.895	74.326	0.048		
	MERS	2	315	0.306	0.197 0.443	-2.724	0.006	2.147	53.433	0.143		
	COVID-19	5	300	0.120	0.054 0.247	-4.441	<0.001	20.664	80.642	<0.001		
Dyspnoea	Any coronavirus	12	1003	0.312	0.232 0.405	-3.806	<0.001	66.182	83.379	<0.001	5.117	0.077
	SARS	4	313	0.330	0.171 0.542	-1.582	0.114	19.851	84.888	<0.001		
	MERS	3	322	0.538	0.262 0.793	0.250	0.803	15.307	86.934	<0.001		
	COVID-19	5	368	0.202	0.114 0.331	-4.009	<0.001	21.753	81.612	<0.001		
Fatigue	Any coronavirus	6	386	0.412	0.182 0.688	-0.609	0.543	96.695	94.829	<0.001	48.167	<0.001
	SARS	1	193	0.800	0.738 0.851	7.704	<0.001	<0.001	<0.001	1.000		
	MERS	2	51	0.256	0.155 0.393	-3.305	0.001	0.315	<0.001	0.575		
	COVID-19	3	142	0.380	0.153 0.674	-0.789	0.430	18.582	89.237	<0.001		
Fever	Any coronavirus	12	949	0.759	0.659 0.837	4.595	<0.001	71.019	84.511	<0.001	4.716	0.095
	SARS	4	315	0.963	0.763 0.995	3.056	0.002	12.166	75.341	0.007		
	MERS	3	334	0.671	0.342 0.889	1.021	0.307	15.716	87.274	<0.001		
	COVID-19	5	300	0.714	0.576 0.820	2.959	0.003	20.445	80.435	<0.001		
Headaches	Any coronavirus	11	893	0.346	0.231 0.482	-2.211	0.027	118.565	91.566	<0.001	2.933	0.231
	SARS	4	313	0.518	0.307 0.723	0.160	0.873	26.797	88.805	<0.001		
	MERS	3	334	0.274	0.077 0.629	-1.271	0.204	21.756	90.807	<0.001		
	COVID-19	4	246	0.232	0.071 0.545	-1.704	0.088	47.147	93.637	<0.001		
Myalgias	Any coronavirus	13	898	0.436	0.319 0.560	-1.013	0.311	106.415	88.723	<0.001	40.447	<0.001
	SARS	5	329	0.633	0.542 0.716	2.826	0.005	7.636	47.613	0.106		
	MERS	4	341	0.409	0.193 0.667	-0.676	0.499	23.126	87.027	<0.001		
	COVID-19	4	228	0.178	0.042 0.515	-1.885	0.059	48.198	93.776	<0.001		
Nausea/vomits	Any coronavirus	6	662	0.222	0.149 0.318	-5.030	<0.001	22.105	77.380	0.001	1.896	0.387
	SARS	2	207	0.276	0.219 0.341	-6.198	<0.001	0.282	<0.001	0.595		
	MERS	2	315	0.283	0.151 0.467	-2.283	0.022	3.234	69.083	0.072		
	COVID-19	2	140	0.071	0.008 0.428	-2.211	0.027	5.170	80.657	0.023		
Sore throat	Any coronavirus	8	747	0.253	0.188 0.332	-5.539	<0.001	24.034	70.874	0.001	8.075	0.018
	SARS	2	209	0.287	0.117 0.549	-1.613	0.107	4.584	78.187	0.032		
	MERS	3	334	0.245	0.202 0.294	-8.825	<0.001	0.618	<0.001	0.734		
	COVID-19	3	204	0.207	0.079 0.443	-2.365	0.018	14.175	85.890	0.001		

COVID-19: novel coronavirus 19; MERS: Middle East Respiratory Syndrome; SARS: Severe Acute Respiratory Syndrome.

(95%CI = 18.8–33.2%, $k=8$, $n=747$), 22.2% nausea/vomiting (95%CI = 14.9–31.8%, $k=6$, $n=662$) and 18.8% diarrhoea (95%CI = 11.9–28.4%, $k=9$, $n=824$) (Table 1, Fig. 2). Heterogeneity was statistically significant ($I^2=70.9–95.9\%$) and sensitivity analyses revealed that chills, fatigue and sore throat were more frequent ($p<0.001$, $p<0.001$, $p=0.018$ respectively) in SARS (73.8%, 80.0%, 28.7% respectively) compared to MERS (30.0%, 25.6%, 24.5% respectively) and COVID-19 (4.5%, 38.0%, 20.7% respectively, Table 1, Fig. 2).

3.2. Mental health outcomes in HCW exposed to SARS/MERS/COVID-19

The top 10 most frequently reported symptoms in SARS/MERS/COVID-19 are displayed in Table 2, Fig. 3) and systematically described in the eTables IV–VI. The meta-analysis revealed that 62.5% HCW exposed to SARS/MERS/COVID-19 reported general health concerns (95%CI = 57.0–67.8%, $k=2$, $n=2254$), 43.7% fear (95%CI = 33.9–54.0%, $k=4$, $n=584$), 37.9% insomnia (95%CI = 30.9–45.5%, $k=6$, $n=5067$), 37.8% psychological distress (95%CI = 28.4–48.2%, $k=15$, $n=24,346$), 34.4% burnout (95%CI = 19.3–53.5%, $k=3$, $n=1337$), 29.0% anxiety features (95%CI = 14.2–50.3%, $k=6$, $n=9191$), 26.3% depressive symptoms (95%CI = 12.5–47.1%, $k=8$, $n=9893$), 20.7% post-traumatic stress disorder (PTSD) features (95%CI = 13.2–31%, $k=11$, $n=3826$), 16.1%

somatisation (95%CI = 0.2–96.0%, $k=2$, $n=2184$) and 14.0% stigmatisation feelings (95%CI = 6.4–28.1%, $k=2$, $n=411$) (Table 1, Fig. 2). Heterogeneity was substantial ($I^2=70.2–99.7\%$) and sensitivity analyses revealed that PTSD features were more frequent ($p<0.001$) in MERS (40.7%) than in SARS (16.7%) and COVID-19 (7.7%, Table 2, Fig. 3).

3.3. Quality assessment and meta-regressions

The quality of the included studies was 3.2 ± 0.9 and ranged from 1 to 5. This was 2.3 ± 0.5 in non-randomised studies, 3.7 ± 0.6 in qualitative studies and 3.2 ± 0.9 in quantitative descriptive studies (eTables IV–VI). Female sex was associated with higher prevalence of myalgias ($\beta=0.041$, $p=0.001$) and sore throat ($\beta=0.035$, $p=0.004$) (eTable VII). Psychological distress was associated with female sex ($\beta=0.032$, $p=0.002$), younger age ($\beta=-0.106$, $p<0.001$), and professional category ($\beta=-2.760$, $p<0.001$): studies including nurses were associated to higher psychological distress than studies including only physicians ($p<0.001$) or including multi-professional samples ($p<0.001$) (eTable VIII). No other meta-regressions resulted significant.

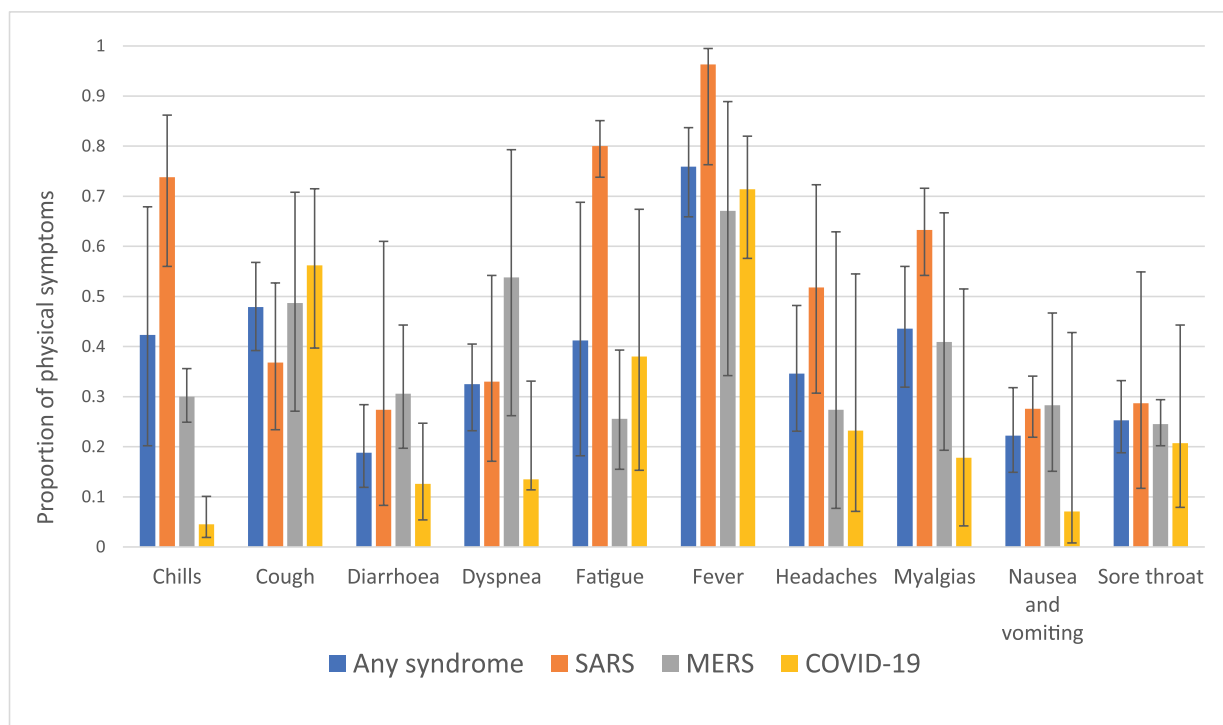


Fig. 2. Top 10 Most frequently reported physical health outcomes in HCW with SARS/MERS/COVID-19 infection.

4. Discussion

To the best of our knowledge, this is the first systematic review to have comprehensively addressed the impact of SARS/MERS/COVID-19

on both physical and mental health of HCW. With 115 individual studies and 60,458 individuals included and several outcomes investigated, this study demonstrated that SARS/MERS/COVID-19 have a substantial impact on HCW's physical and mental health.

Table 2
Meta-analytical proportion of mental health outcomes in HCW exposed to SARS/MERS/COVID-19

Symptom	Group	No. of studies	Sample size	Random effects model		z Score	P	Test for Heterogeneity			Between-group heterogeneity	
				Proportion	95 % CI			Q	I ²	P	Q	P
Psychological distress	Any coronavirus	15	24346	0.378	0.284 0.482	-2.293	0.022	2572.027	99.456	<0.001	1.102	0.576
	SARS	10	17144	0.409	0.293 0.536	-1.406	0.160	1358.872	99.338	<0.001		
	MERS	2	413	0.323	0.216 0.453	-2.638	0.008	2.235	55.249	0.135		
	COVID-19	3	6789	0.299	0.089 0.652	-1.13	0.258	780.733	99.744	<0.001		
Anxiety features	Any coronavirus	6	9191	0.290	0.142 0.503	-1.935	0.053	1318.346	99.621	<0.001	0.557	0.456
	SARS	2	1475	0.457	0.051 0.930	-0.122	0.903	214.086	99.533	<0.001		
	COVID-19	4	7716	0.222	0.127 0.358	-3.660	<0.001	329.839	99.090	<0.001		
PTSD features	Any coronavirus	11	3826	0.207	0.132 0.310	-4.851	<0.001	390.38	97.438	<0.001	22.741	<0.001
	SARS	7	2570	0.167	0.126 0.220	-9.354	<0.001	51.138	88.267	<0.001		
	MERS	3	786	0.407	0.199 0.656	-0.722	0.470	82.561	97.578	<0.001		
	COVID-19	1	470	0.077	0.056 0.105	-14.355	<0.001	<0.001	<0.001	1.000		
Depressive symptoms	Any coronavirus	8	9893	0.263	0.125 0.471	-2.212	0.027	1898.27	99.631	<0.001	1.153	0.283
	SARS	4	2177	0.368	0.126 0.701	-0.761	0.447	478.474	99.373	<0.001		
	COVID-19	4	7716	0.179	0.067 0.401	-2.659	0.008	791.154	99.621	<0.001		
Insomnia	Any coronavirus	6	5067	0.379	0.309 0.455	-3.079	0.002	134.201	96.274	<0.001	0.999	0.317
	SARS	3	1577	0.295	0.107 0.593	-1.369	0.171	102.890	98.056	<0.001		
	COVID-19	3	3490	0.445	0.382 0.509	-1.685	0.092	29.322	93.179	<0.001		
Burnout	Any coronavirus	3	1337	0.344	0.193 0.535	-1.61	0.107	67.959	97.057	0.000	0.964	0.326
	SARS	2	1305	0.382	0.195 0.613	-1.001	0.317	65.953	98.484	<0.001		
	COVID-19	1	32	0.250	0.130 0.426	-2.691	0.007	0.000	1.000	<0.001		
Stigmatisation feelings	Any coronavirus	2	411	0.140	0.064 0.281	-4.073	0.000	8.816	88.658	0.003	N.a.	
	SARS	2	411	0.140	0.064 0.281	-4.073	0.000	8.816	88.658	0.003		
Fear	Any coronavirus	4	584	0.437	0.339 0.540	-1.196	0.232	11.813	74.603	0.008	1.217	0.270
	SARS	3	557	0.416	0.311 0.530	-1.446	0.148	9.874	79.744	0.007		
	MERS	1	27	0.540	0.355 0.714	0.415	0.678	<0.001	<0.001	1.000		
General health concern	Any coronavirus	2	2254	0.625	0.570 0.678	4.341	0.000	3.351	70.161	0.067	N.a.	
	SARS	2	2254	0.625	0.570 0.678	4.341	0.000	3.351	70.161	0.067		
Somatisation	Any coronavirus	2	2184	0.161	0.002 0.960	-0.672	0.502	334.981	99.701	<0.001	N.a.	
	SARS	2	2184	0.161	0.002 0.960	-0.672	0.502	334.981	99.701	<0.001		

COVID-19: novel coronavirus 19; MERS: Middle East Respiratory Syndrome; PTSD: post-traumatic stress disorder; SARS: Severe Acute Respiratory Syndrome.

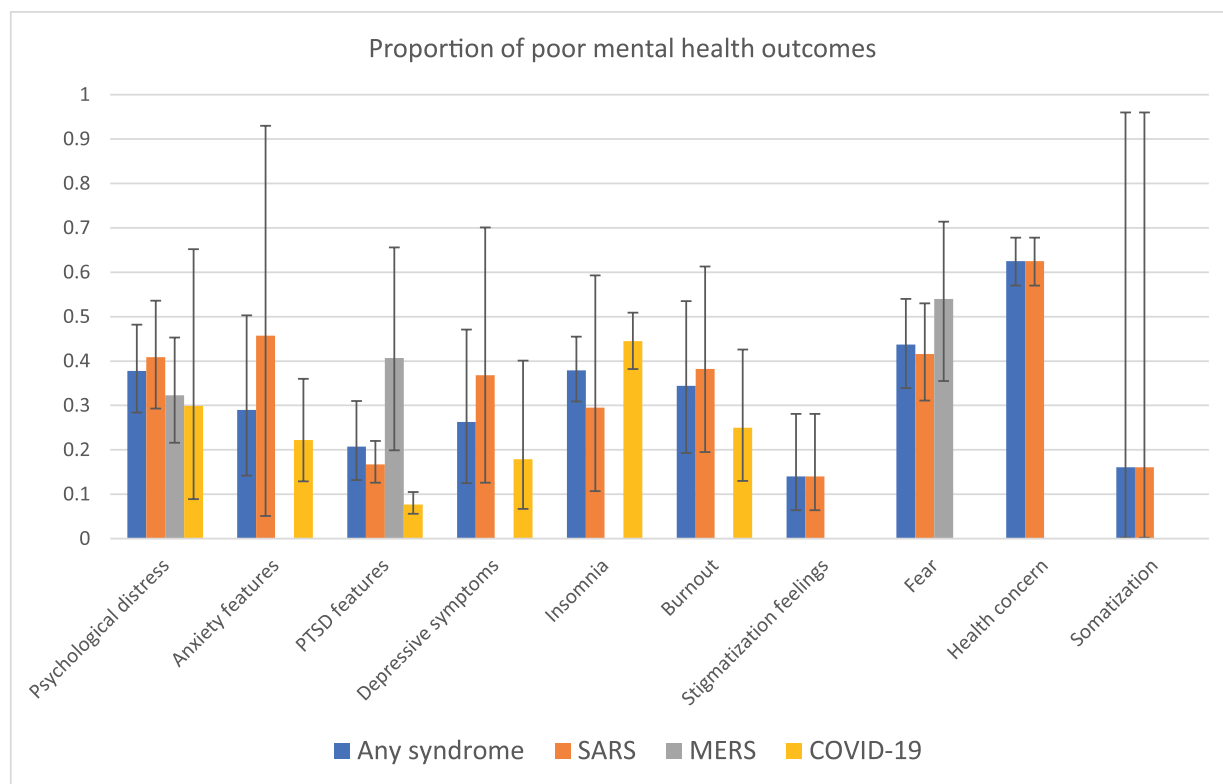


Fig. 3. Top 10 Most frequently reported mental health outcomes in HCW exposed to SARS/MERS/COVID-19.

This meta-analysis identified for the first time the most frequent physical health outcomes in HCW infected by SARS/MERS/COVID-19. Fever was the most frequent symptom in HCW (75.9%); it was more frequent in the general population with COVID-19 infection (meta-analyses: 85.6–88.7% (Hu et al., 2020; Li et al., 2020a; Rodriguez-Morales et al., 2020; Zhu et al., 2020)) and similarly frequent in the general population with MERS infection (meta-analysis: 77% (Badawi and Ryoo, 2016)). Cough appeared slightly less frequently in HCW (47.9%) than in the general population with COVID-19 infections (meta-analyses: 57.6–68.6% (Hu et al., 2020; Li et al., 2020a; Rodriguez-Morales et al., 2020; Zhu et al., 2020)). Conversely, myalgias in HCW (43.6%) were more frequent than in the general population with COVID-19 infections (meta-analyses: myalgia/fatigue = 35.8% (Li et al., 2020a); muscle soreness = 33% (Zhu et al., 2020)). Our sensitivity analyses found that chills (42.3% across all SARS/MERS/COVID-19) were more frequent in HCW with SARS (73.8%) than MERS (30.0%) and particularly COVID-19 (4.5%) infection; frequency of chills in HCW with SARS infection was comparable to the general population (SARS: 74.0–75.5% (Liu et al., 2003; Tiwari et al., 2003)). Frequency of fatigue in HCW (41.2%) was also comparable to the general population with COVID-19 infection (meta-analyses: 42.4–46.1% (Hu et al., 2020; Zhu et al., 2020)). Furthermore, in the general population, fatigue appears more frequently in SARS (60–70% (Huo et al., 2003; Xu et al., 2003)) than in COVID-19 (meta-analyses: 42.4–46.1% (Hu et al., 2020; Zhu et al., 2020)), in line with our sensitivity analyses (fatigue in HCW: SARS = 80.0%, MERS = 25.6%, COVID-19 = 38.0%). Frequency of dyspnoea in HCW (31.2%) was comparable (Hu et al., 2020; Li et al., 2020a; Rodriguez-Morales et al., 2020; Zhu et al., 2020) to the general population with COVID-19 infection (meta-analyses: 21.4–45.6% (Hu et al., 2020; Rodriguez-Morales et al., 2020; Zhu et al., 2020)) but lower than in the general population with MERS infection (meta-analysis: 68% (Badawi and Ryoo, 2016)). Frequency of headaches (34.6%), nausea/vomiting (22.2%) and diarrhoea (18.8%) in HCW were as frequent as in the general population with COVID-19 infection (meta-analyses:

headaches = 8–15.4% (Rodriguez-Morales et al., 2020; Zhu et al., 2020); nausea/vomiting = 3.9–10.2% (Li et al., 2020a; Zhu et al., 2020); diarrhoea = 4.8–12.9% (Cheung et al., 2020; Li et al., 2020a; Rodriguez-Morales et al., 2020; Zhu et al., 2020)). Frequency of sore throat (25.3%) was similar between HCW and the general population infected by COVID-19 (meta-analysis: 11.0–21.9% (Li et al., 2020a; Rodriguez-Morales et al., 2020)), but lower than in the general population affected with MERS (meta-analysis: 39% (Badawi and Ryoo, 2016)). However, while our sensitivity analyses found a higher prevalence of sore throat in HCW with SARS (28.7%) compared to COVID-19 infection (20.7%), this effect was not observed in the general population (SARS: 13–25% (Hui et al., 2003), COVID-19 11.0–21.9% (Li et al., 2020a; Rodriguez-Morales et al., 2020)).

Whether these differences are due to differential reporting of symptoms by HCW or by a specific clinical course of these syndromes remains unclear. However, since the meta-regressions revealed that findings were not affected by the type of data source, it is possible to speculate that differences in the frequency of symptoms may characterise specific clinical manifestations of SARS/MERS/COVID-19 in HCW. The repeated exposure to high viral loads from contaminated patients (Liu et al., 2020) can interact with high environmental stress—which is known to affect the immune system (Troyer et al., 2020)—and theoretically account for some of these findings. Overall, the impact of SARS/MERS/COVID-19 infection on the physical health of HCW is profound, to the point that it has been identified as the most common cause of death for physicians during the outbreak (Li et al., 2020b), particularly general practitioners and emergency department physicians (Ing et al., 2020).

This is also the first meta-analysis that is specifically addressing mental health outcomes in HCW exposed to SARS/MERS/COVID-19. As global public health concerns, general health concerns represent the most frequent issue in HCW (62.5% according to our results) and a main topic in the general population (Hamid et al., 2020; Nickell et al., 2004; Paudel et al., 2020). In some vulnerable groups as pregnant women, general health concerns cumulate to 94.6% (Du et al., 2020).

General health concerns are typically high when the outbreak starts (80.3%), intensify even further over its course (up to 88.6%) and decline (75.4%) once the acute phase has resolved (Ro et al., 2017). During pandemics/epidemics, fear of contracting coronaviruses has often been associated with psychological distress (Shacham et al., 2020). Accordingly, fear (43.7%) was the second most frequent mental health issue in HCW, although less common than in the general population during SARS epidemic (individual studies: 60–70% (Bener and Al-Khal, 2004; Chen et al., 2004; Yip et al., 2007)), possibly because of higher health literacy in HCW (Al Sayah et al., 2013). While the frequency of psychological distress in HCW (37.8%) was similar to that observed in the general population (SARS:39% (DiGiovanni et al., 2004)), our meta-regression analyses found that psychological distress was particularly common in HCW subgroups (see below). Frequency of poor sleep during a COVID-19 outbreak was 18.2% in the general population (Huang and Zhao, 2020), about half of what we observed in HCW (37.9%). This may be due to long shifts and working hours that typically characterise HCW's clinical duties during epidemics/pandemics (Puliatti et al., 2020). A frequently associated feature was burnout—already high in ordinary times for HCW (Adriaenssens et al., 2015)—which peaked to 34.4% in HCW exposed to SARS/MERS/COVID-19; burnout is reported to be particularly high in nurses working long hours with MERS patients (Kim and Choi, 2016). Level of burnout is hardly ever reported or evaluated in the general population, but it has been related to physical distance from the epicentre of pandemic/epidemic outbreaks, with an inverted U-shaped relationship (Zhang et al., 2020a). Our meta-analysis also showed a higher frequency of anxiety (29.0%) and depressive (26.3%) features in HCW compared to the general population with SARS/MERS infection (meta-analyses: depression = 15% (Rogers et al., 2020); anxiety disorders = 14.8% (Rogers et al., 2020)), although the current meta-analysis was not restricted to categorical diagnoses. Furthermore, the SARS outbreak has resulted in historically high suicide rates in the general population (Cheung et al., 2008; Yip et al., 2010); suicide cases related to COVID-19 have been already reported, also in HCW (Jun et al., 2020). However, it is not known how risk of suicide is in HCW compared to the general population.

Although the frequency of PTSD features in HCW exposed to SARS/MERS/COVID-19 appeared lower (20.7%) than in the general population with SARS/MERS infection (meta-analysis: PTSD = 32.5% (Rogers et al., 2020)), PTSD symptoms usually appear months after the traumatic experience, and it may be too early in the case of COVID-19 pandemic. In fact, mental health in SARS was found to be more impaired in the phase following the acute outbreak than in the initial phase (Chong et al., 2004). Future research should evaluate a potential increase in PTSD symptoms in HCW exposed to COVID-19 after the present study. An alternative explanation is that HCW may have fewer risk factors for PTSD, such as a history of physical diseases or a family history of psychiatric disorders (Tortella-Feliu et al., 2019). Our sensitivity analyses showed that—among HCW—PTSD features were more frequent in MERS (40.7%) than in SARS (16.7%) and COVID-19 (7.7%); this could relate to the higher levels of trauma associated with the overall higher mortality rates of MERS (Ahmed, 2017) in the general population (MERS = 35% (Yan et al., 2020)-41% (Ahmed, 2017); SARS 9.6% (Yan et al., 2020)- 21% (Chang et al., 2020); COVID-19 2% (Yan et al., 2020)-5% (Li et al., 2020a)). HCW also experience higher levels of somatisation (16.1%) than the general population (0.4%) (Zhang et al., 2020b). Finally, 14.0% of HCW reported having stigmatisation feelings, albeit less frequently than the general population (39.5%) (DiGiovanni et al., 2004); some HCW expressed that people avoided not only them, due to their job, but also their families (Koh et al., 2005).

Overall, the findings of the current study may have some clinical implications. First, they clearly confirm that HCW are as essential as a fragile population which is put under high physical and mental health burden during SARS/MERS/COVID-19. Although HCW's dedication

and commitment outweigh the risk and their willingness to fight SARS/MERS/COVID-19 (Aldrees et al., 2017; Hussein, 2004; Imai et al., 2005), HCW recognise to be at risk, mostly because of the lack of personal protective equipment (Iacobucci, 2020), high working pressure (Bai et al., 2020; Lung et al., 2009; Shih et al., 2007) and sub-optimal training/confidence when working in extreme circumstances (Hsu et al., 2006). Second, these findings inform the detection and recognition of core physical and mental health outcomes in HCW during SARS/MERS/COVID-19 epidemics/pandemics. Given the logistic challenges of conducting research during infective outbreaks, focusing on the most frequent outcomes that are reported in HCW may represent a pragmatic advantage. For example, the vast majority of HCW (77%) were females, and our meta-regressions demonstrated that female HCW were more frequently displaying myalgias and sore throat, while young HCW, females and nurses were particularly vulnerable to SARS/MERS/COVID-19-related psychological distress. These findings can be used to develop gender/age- (or professional group-) sensitive guidelines for recognising the physical and mental health burden of these syndromes. In fact, some professional bodies are already developing specific recommendations for vulnerable categories such as pregnant HCW women (who are at risk of complications themselves and their neonates (Khan et al., 2020)), older HCW or HCW with a history of chronic diseases (Kowalski et al., 2020). While the physical health of HCW is more frequently monitored, the current findings may guide healthcare providers and policymakers to implement systematic screenings for HCW's mental health. Third, the current findings can be used to design or refine preventive approaches. Services for individuals at Clinical High Risk for Psychosis (Fusar-Poli et al., 2020; Kotlicka-Antczak et al., 2020; Salazar de Pablo et al., 2019) may leverage our findings to refine preventive approaches. For example, there is emerging evidence that Covid-19 may increase the incidence of short-lived psychotic episodes (Anmella et al., 2020; Valdés-Florido et al., 2020; Zulkifli et al., 2020) also termed as brief and limited intermittent psychotic symptoms (Castagnini and Fusar-Poli, 2017; Fusar-Poli et al., 2016; Fusar-Poli et al., 2017; Fusar-Poli et al., 2019; Minichino et al., 2019; Rutigliano et al., 2018). Our review found that HCW presented with full-blown disorders as acute stress disorder (Bai et al., 2004) or PTSD (Lee et al., 2018). Outside HCW, severe mental disorders have been detected after coronavirus syndromes (Rogers et al., 2020). This evidence suggests that monitoring for emerging mental disorders should become a cornerstone of preventive care during pandemics. Preventive approaches may include education programmes targeting HCW to inform them about their risk of developing specific physical/mental health outcomes while providing direct or indirect care to SARS/MERS/COVID-19 patients. HCW may be particularly reluctant to disclose their problems (Chen et al., 2020; Shanafelt et al., 2020) to minimise the burden on their relatives (Chen et al., 2020) or because they over consider themselves self-reliant (Shanafelt et al., 2020). Because the current study concurrently appraises both physical and mental health outcomes, it is particularly suited to inform cross-cutting approaches such as interventions designed to enhance resilience and therefore impact both physical and mental health (Maunder et al., 2008). It may be possible to screen those HCW at a high risk of developing psychiatric disorders using instruments that have been validated to detect emerging severe mental disorders (Fusar-Poli et al., 2020), such as the Comprehensive Assessment of At Risk Mental States (Yung et al., 2005), the Structured Interview for Bipolar At Risk States (Fusar-Poli et al., 2018) and the PredictD (King et al., 2008). New screening instruments are being validated to identify individuals with mental health concerns in the general population with specific reference to the current COVID-19 pandemic (Lee, 2020). These approaches could be extended to all categories which this review found to be impacted by SARS/MERS/COVID-19: physicians (Grace et al., 2005), nurses (Su et al., 2007), health care assistants (Poon et al., 2004), students (Wong et al., 2004a), social workers (Gearing et al., 2007) and trainees (Rambaldini et al., 2005). Fourth, the current findings can serve as real-world targets to

inform the development of effective treatments for restoring the impaired physical health and mental health of HCW, which are currently limited. Globally, substantial research investments are being deployed to establish effective treatments for physical and mental health outcomes in HCW, in particular leveraging the potential of eHealth and telemedicine during epidemics/pandemics (Moazzami et al., 2020; Whaibeh et al., 2020; Williamson et al., 2020).

This study has several limitations. First, despite our comprehensive approach, there was a limited amount of evidence to provide stratified results for the proportion of stigma, general health concern and somatisation in HCW exposed to MERS or COVID-19. Also, some emerging symptoms that have only recently been detected in the general population such as anosmia were not extensively reported in HCW, thus preventing their inclusion in the current meta-analysis. Second, heterogeneity was substantial in the evaluated outcomes. We conducted meta-analytical regression analyses to evaluate the influence of several variables on our results. Third, despite our meta-regressions, we were unable to quantify the impact of ethnic, clinical and treatment factors, or healthcare system differences, which may act as confounding factors. Fourth, HCW exposed to SARS/MERS/COVID-19 may also have been infected but be asymptomatic, and infection status may have gone unnoticed by researchers. Also, it may not have been possible to detect all the symptoms that appeared in HCW. These are intrinsic limitations of the underlying primary research. Fifth, we excluded studies not published in English. This may have resulted in the exclusion of some studies, particularly from Asian countries. However, we were able to detect 115 individual studies with our approach, 90 of which were conducted in Asia. Sixth, the main symptoms of SARS in general population have not been subjected to a comprehensive meta-analysis, limiting comparative analyses with our results. Finally, because of the challenges in conducting research during a pandemic, several studies had a suboptimal design; the data source was controlled in meta-regression analyses revealing no impact on the results.

5. Conclusions

SARS/MERS/COVID-19 have a substantial impact on the physical and mental health of HCW, which should become a priority for public health strategies.

Declaration of Competing Interest

Dr Catalan has received personal fees from Janssen. Dr Fusar-Poli has received grants from Lundbeck and personal fees from Lundbeck, Menarini and Angelini. Dr Arango has been a consultant to or has received honoraria or grants from Acadia, Angelini, Gedeon Richter, Janssen Cilag, Lundbeck, Otsuka, Roche, Sage, Servier, Shire, Schering Plough, Sumitomo Dainippon Pharma, Sunovion and Takeda. Dr Moreno has acted as consultant or participated in DMC for Janssen, Servier, Lundbeck, Nuvelution, Angelini and Otsuka.

Funding/Support

Dr Salazar de Pablo and Dr. Vaquerizo-Serrano are supported by the Alicia Koplowitz Foundation. Dr Arango and Dr Moreno have been supported by the Spanish Ministry of Science and Innovation. Instituto de Salud Carlos III (SAM16PE07CP1, PI16/02012, PI19/024), co-financed by ERDF Funds from the European Commission, “A way of making Europe”, CIBERSAM. Madrid Regional Government (B2017/BMD-3740 AGES-CM-2), European Union Structural Funds. European Union Seventh Framework Program under grant agreements FP7-4-HEALTH-2009-2.2.1-2-241909 (Project EU-GEI), FP7- HEALTH-2013-2.2.1-2-603196 (Project PSYSCAN) and FP7- HEALTH-2013-2.2.1-2-602478 (Project METSY); and European Union H2020 Program under the Innovative Medicines Initiative 2 Joint Undertaking (grant

agreement No 115916, Project PRISM, and grant agreement No 777394, Project AIMS-2-TRIALS), Fundación Familia Alonso, and Fundación Alicia Koplowitz and Fundación Mutua Madrileña. Dr Fusar-Poli is supported by the PSYSCAN project through the European Commission.

Acknowledgments

We are grateful to Dr Julia de Pablo (Gros Health Centre, Osakidetza-Basque Health Service, San Sebastián, Spain) and Dr Paula Martínez-Pascual (Department of ENT, Hospital General Gregorio Marañón, Madrid, Spain) for their external advice on the diagnosis of coronavirus syndromes and the physical impact on healthcare workers.

Contributions

Dr Salazar de Pablo had full access to all of the data in the study and takes responsibility for the integrity of the data and the accuracy of the data analysis; Study concept and design: Salazar de Pablo, Fusar-Poli; Acquisition of data: Salazar de Pablo, Vaquerizo-Serrano, Catalan, Fusar-Poli; Statistical analysis: Salazar de Pablo, Fusar-Poli; Interpretation of data: All authors; Drafting of the manuscript: Salazar de Pablo, Fusar-Poli. Administrative, technical, or material support: Fusar-Poli. Critical revision of the manuscript for important intellectual content: All authors.

Supplementary materials

Supplementary material associated with this article can be found, in the online version, at doi:10.1016/j.jad.2020.06.022.

References

- Adriaenssens, J., De Gucht, V., Maes, S., 2015. Determinants and prevalence of burnout in emergency nurses: a systematic review of 25 years of research. *Int. J. Nurs. Stud.* 52, 649–661.
- Ahmed, A.E., 2017. The predictors of 3-and 30-day mortality in 660 MERS-CoV patients. *BMC Infect. Dis.* 17.
- Al Sayah, F., Majumdar, S.R., Williams, B., Robertson, S., Johnson, J.A., 2013. Health literacy and health outcomes in diabetes: a systematic review. *J. Gen. Intern. Med.* 28, 444–452.
- Aldees, T., Al Ghobain, M., Alenezi, A., Alqaryan, S., Aldabeeb, D., Alotaibi, N., Alzahrani, K., Alharethy, S., 2017. Medical residents' attitudes and emotions related to Middle East respiratory syndrome in Saudi Arabia A cross-sectional study. *Saudi Med. J.* 38, 942–947.
- Almutairi, A.F., Adlan, A.A., Balkhy, H.H., Abbas, O.A., Clark, A.M., 2018. Exploring the experiences of healthcare providers who survived MERS-CoV in Saudi Arabia. *J. Infect. Public Health* 11, 187–191.
- Altman, D.G., Simeria, I., Hoey, J., Moher, D., Schulz, K., 2008. EQUATOR: reporting guidelines for health research. *Lancet* 371, 1149–1150.
- Anmella, G., Fico, G., Roca, A., Gómez, M., Vázquez, M., Murru, A., Pacchiarotti, I., Verdolini, N., Vietta, E., 2020. Unravelling potential severe psychiatric repercussions on healthcare professionals during the COVID-19 crisis. *J. Affect. Disord.*
- Badawi, A., Ryoo, S.G., 2016. Prevalence of comorbidities in the Middle East respiratory syndrome coronavirus (MERS-CoV): a systematic review and meta-analysis. *Int. J. Infect. Dis.* 49, 129–133.
- Bai, Y., Lin, C.C., Lin, C.Y., Chen, J.Y., Chue, C.M., Chou, P., 2004. Survey of stress reactions among health care workers involved with the SARS outbreak. *Psychiatr. Serv.* 55, 1055–1057.
- Bai, Y., Wang, X., Huang, Q., Wang, H., Gurarie, D., Ndeffo-Mbah, M., Fan, F., Fu, P., Horn, M., Xu, S., Mondal, A., Juang, X., Zhao, H., 2020. SARS-CoV-2 infection in health care workers: a retrospective analysis and a model study, medRxiv.
- Behghadami, M.A., Janati, A., Sadeghi-Bazargani, H., Gholizadeh, M., Rahmani, F., Arab-Zozani, M., 2019. Assessing preparedness of non-hospital health centers to provide primary emergency care; a systematic review. *Bull. Emerg. Trauma* 7, 201–211.
- Bener, A., Al-Khal, A., 2004. Knowledge, attitude and practice towards SARS. *J. R. Soc. Promot. Health* 124, 167–170.
- Version 3Borenstein, M., Hedges, L., Higgins, J., Rothstein, H., 2013. In: *Biostat. E. (Ed.)*, Version 3N.
- Castagnini, A.C., Fusar-Poli, P., 2017. Diagnostic validity of ICD-10 acute and transient psychotic disorders and DSM-5 brief psychotic disorder. *Eur. Psychiatry* 45, 104–113.
- Chang, D., Xu, H., Rebaza, A., Sharma, L., Dela Cruz, C.S., 2020. Protecting health-care workers from subclinical coronavirus infection. *Lancet Respir. Med.* 8, E13–E13.
- Chen, Q., Liang, M., Li, Y., Guo, J., Fei, D., Wang, L., He, L., Sheng, C., Cai, Y., Li, X., Wang, J., Zhang, Z., 2020. Mental health care for medical staff in China during the

- COVID-19 outbreak. *Lancet Psychiatry* 7, e15–e16.
- Chen, R., Chou, K.R., Huang, Y.J., Wang, T.S., Liu, S.Y., Ho, L.Y., 2006. Effects of a SARS prevention programme in Taiwan on nursing staffs anxiety, depression and sleep quality: a longitudinal survey. *Int. J. Nurs. Stud.* 43, 215–225.
- Chen, Y.M., Perng, R.P., Chu, H., Tsai, C.M., Whang-Peng, J., 2004. Impact of severe acute respiratory syndrome on the status of lung cancer chemotherapy patients and a correlation of the signs and symptoms. *Lung Cancer* 45, 39–43.
- Cheung, K.S., Hung, I.F., Chan, P.P., Lung, K.C., Tso, E., Liu, R., Ng, Y.Y., Chu, M.Y., Chung, T.W., Tam, A.R., Yip, C.C., Leung, K.H., Yim-Fong Fung, A., Zhang, R.R., Lin, Y., Cheng, H.M., Zhang, A.J., To, K.K., Chan, K.H., Yuen, K.Y., Leung, W.K., 2020. Gastrointestinal Manifestations of SARS-CoV-2 infection and virus load in fecal samples from the Hong Kong cohort and systematic review and meta-analysis. *Gastroenterology*.
- Cheung, Y.T., Chau, P.H., Yip, P.S., 2008. A revisit on older adults suicides and Severe Acute Respiratory Syndrome (SARS) epidemic in Hong Kong. *Int. J. Geriatr. Psychiatry* 23, 1231–1238.
- Chong, M.Y., Wang, W.C., Hsieh, W.C., Lee, C.Y., Chiu, N.M., Yeh, W.C., Huang, T.L., Wen, J.K., Chen, C.L., 2004. Psychological impact of severe acute respiratory syndrome on health workers in a tertiary hospital. *Br. J. Psychiatry* 185, 127–133.
- Christian, M.D., Loutfy, M., McDonald, C., Martinez, K.F., Ofner, M., Wong, T., Wallington, T., Gold, W.L., Mederski, B., Green, K., Low, D.E., Team, S.I., 2004. Possible SARS coronavirus transmission during cardiopulmonary resuscitation. *Emerg. Infect. Dis.* 10, 287–293.
- DerSimonian, R., Laird, N., 1986. Meta-analysis in clinical trials. *Control Clin. Trials* 7, 177–188.
- DiGiovanni, C., Conley, J., Chiu, D., Zaborski, J., 2004. Factors influencing compliance with quarantine in Toronto during the 2003 SARS outbreak. *Biosecur. Bioterror* 2, 265–272.
- Du, L., Gu, Y.B., Cui, M.Q., Li, W.X., Wang, J., Zhu, L.P., Xu, B., 2020. Investigation on demands for antenatal care services among 2 002 pregnant women during the epidemic of COVID-19 in Shanghai. *Zhonghua Fu Chan Ke Za Zhi* 55, 160–165.
- Ehrlich, H., McKenney, M., Elkbuli, A., 2020. Protecting our healthcare workers during the COVID-19 pandemic. *Am. J. Emerg. Med.*
- Fusar-Poli, P., Cappucciati, M., Bonoldi, I., Hui, L.M.C., Rutigliano, G., Stahl, D.R., Borgwardt, S., Politi, P., Mishara, A.L., Lawrie, S.M., Carpenter, W.T., McGuire, P.K., 2016. Prognosis of brief psychotic episodes a meta-analysis. *Jama Psychiatry* 73, 211–220.
- Fusar-Poli, P., Cappucciati, M., De Micheli, A., Rutigliano, G., Bonoldi, I., Tognin, S., Ramella-Cravaro, V., Castagnini, A., McGuire, P., 2017. Diagnostic and prognostic significance of brief limited intermittent psychotic symptoms (BLIPS) in individuals at ultra high risk. *Schizophr. Bull.* 43, 48–56.
- Fusar-Poli, P., De Micheli, A., Chalambrides, M., Singh, A., Augusto, C., McGuire, P., 2019. Unmet needs for treatment in 102 individuals with brief and limited intermittent psychotic symptoms (BLIPS): implications for current clinical recommendations. *Epidemiol. Psychiatr. Sci.* 29, e67.
- Fusar-Poli, P., De Micheli, A., Rocchetti, M., Cappucciati, M., Ramella-Cravaro, V., Rutigliano, G., Bonoldi, I., McGuire, P., Falkenberg, I., 2018. Semistructured interview for bipolar at risk states (SIBARS). *Psychiatry Res.* 264, 302–309.
- Fusar-Poli, P., Salazar de Pablo, G., Correll, C.U., Meyer-Lindenberg, A., Millan, M.J., Borgwardt, S., Galderisi, S., Bechdolf, A., Pfennig, A., Kessing, L.V., van Amelsvoort, T., Nieman, D.H., Domschke, K., Krebs, M.O., Koutsouleris, N., McGuire, P., Do, K.Q., Arango, C., 2020. Prevention of psychosis: advances in detection, prognosis, and intervention. *JAMA Psychiatry*.
- Gearing, R.E., Saini, M., McNeill, T., 2007. Experiences and implications of social workers practicing in a pediatric hospital environment affected by SARS. *Health Soc. Work* 32, 17–27.
- Grace, S.L., Hershenfield, K., Robertson, E., Stewart, D.E., 2005. The occupational and psychosocial impact of SARS on academic physicians in three affected hospitals. *Psychosomatics* 46, 385–391.
- Hamid, S., Mir, M.Y., Rohela, G.K., 2020. Novel coronavirus disease (COVID-19): a pandemic (epidemiology, pathogenesis and potential therapeutics). *New Microbes New Infect.* 35, 100679.
- Holmes, E.A., O'Connor, R.C., Perry, V.H., Tracey, I., Wessely, S., Arseneault, L., Ballard, C., Christensen, H., Cohen Silver, R., Everall, I., Ford, T., John, A., Kabir, T., King, K., Madsen, I., Michie, S., Przybylski, A.K., Shafran, R., Sweeney, A., Worthman, C.M., Yardley, L., Cowan, K., Cope, C., Hotopf, M., Bullmore, E., 2020. Multidisciplinary research priorities for the COVID-19 pandemic: a call for action for mental health science. *Lancet Psychiatry*.
- Hsu, C.-C., Chen, T., Chang, M., Chang, Y.-K., 2006. Confidence in controlling a SARS outbreak: Experiences of public health nurses in managing home quarantine measures in Taiwan. *Am. J. Infect. Control* 34, 176–181.
- Hu, Y., Sun, J., Dai, Z., Deng, H., Li, X., Huang, Q., Wu, Y., Sun, L., Xu, Y., 2020. Prevalence and severity of corona virus disease 2019 (COVID-19): a systematic review and meta-analysis. *J. Clin. Virol.* 127, 104371.
- Huang, L., Lin, G., Tang, L., Yu, L., Zhou, Z., 2020. Special attention to nurses' protection during the COVID-19 epidemic. *Critical Care* 24.
- Huang, Y., Zhao, N., 2020. Mental health burden for the public affected by the COVID-19 outbreak in China: who will be the high-risk group? *Psychol. Health Med.* 1–12.
- Hui, D.S., Wong, P.C., Wang, C., 2003. SARS: clinical features and diagnosis. *Respirology* 8 (Suppl), S20–S24.
- Huo, N., Lu, H., Xu, X., Wang, G., Li, H., Li, J., Wang, J., Nie, L., Gao, X., Zhang, Z., Li, Y., Zhuang, H., 2003. The clinical characteristics and outcome of 45 early stage patients with SARS. *Beijing Da Xue Xue Bao Yi Xue Ban* 35 (Suppl), 19–22.
- Hussein, A., 2004. Guest Editorial: SARS - future considerations for nurses. *J. Adv. Nurs.* 45, 111–112.
- Iacobucci, G., 2020. Covid-19: doctors still at "considerable risk" from lack of PPE, BMA warns. *Bmj-Br. Med. J.* 368.
- Imai, T., Takahashi, K., Hoshuyama, T., Hasegawa, N., Lim, M.K., Koh, D., 2005. SARS risk perceptions in healthcare workers, Japan. *Emerg. Infect. Dis.* 11, 404–410.
- Ing, E., Xu, A., A., S., Torun, N., 2020. Physician Deaths from Corona Virus Disease (COVID-19). *medRxiv*.
- Jun, J., Tucker, S., Melnyk, B., 2020. Clinician mental health and well-being during global healthcare crises: evidence learned from prior epidemics for COVID-19 pandemic. *Worldviews Evidence-based Nurs.*
- Khan, S., Jun, L., Nawsherwan, Siddique, R., Li, Y., Han, G., Xue, M., Nabi, G., Liu, J., 2020. Association of COVID-19 infection with pregnancy outcomes in healthcare workers and general women. *Clin. Microbiol. Infect.: Off. Publ. Eur. Soc. Clin. Microbiol. Infect. Dis.*
- Kim, J.S., Choi, J.S., 2016. Factors Influencing emergency nurses' burnout during an outbreak of middle east respiratory syndrome coronavirus in Korea. *Asian Nurs. Res.* 10, 295–299.
- King, M., Walker, C., Levy, G., Bottomley, C., Royston, P., Weich, S., Bellón-Saameño, J.A., Moreno, B., Svab, I., Rotar, D., Rifel, J., Maaros, H.I., Aluoja, A., Kalda, R., Neeleman, J., Geerlings, M.I., Xavier, M., Carraça, I., Gonçalves-Pereira, M., Vicente, B., Saldavia, S., Melipillan, R., Torres-Gonzalez, F., Nazareth, I., 2008. Development and validation of an international risk prediction algorithm for episodes of major depression in general practice attendees: the PredictD study. *Arch. Gen. Psychiatry* 65, 1368–1376.
- Koh, D., Lim, M.K., Chia, S.E., 2003. SARS: health care work can be hazardous to health. *Occup. Med.-Oxf.* 53, 241–243.
- Koh, D., Lim, M.K., Chia, S.E., Ko, S.M., Qian, F., Ng, V., Tan, B.H., Wong, K.S., Chew, W.M., Tang, H.K., Ng, W., Muttakin, Z., Emmanuel, S., Fong, N.P., Koh, G., Kwa, C.T., Tan, K.B.C., Fones, C., 2005. Risk perception and impact of Severe Acute Respiratory Syndrome (SARS) on work and personal lives of healthcare workers in Singapore - What can we learn? *Med. Care* 43, 676–682.
- Kotlicka-Antczak, M., Podgórski, M., Oliver, D., Maric, N.P., Valmaggia, L., Fusar-Poli, P., 2020. Worldwide implementation of clinical services for the prevention of psychosis: The IEPA early intervention in mental health survey. *Early Interv. Psychiatry*.
- Kowalski, L.P., Sanabria, A., Ridge, J.A., Ng, W.T., de Bree, R., Rinaldo, A., Takes, R.P., Makitie, A.A., Carvalho, A.L., Bradford, C.R., Paleri, V., Hartl, D.M., Poorten, V.V., Nixon, L.J., Piazza, C., Lacy, P., Rodrigo, J.P., Guntinas-Lichius, O., Mendenhall, W.M., D'Cruz, A., Lee, A.W.M., Ferlito, A., 2020. COVID-19 pandemic: effects and evidence-based recommendations for otolaryngology and head and neck surgery practice. *Head Neck*.
- Lee, S.A., 2020. Coronavirus anxiety scale: a brief mental health screener for COVID-19 related anxiety. *Death Stud.* 1–9.
- Lee, S.M., Kang, W.S., Cho, A.-R., Kim, T., Park, J.K., 2018. Psychological impact of the 2015 MERS outbreak on hospital workers and quarantined hemodialysis patients. *Comp. Psychiatry* 87, 123–127.
- Li, L.Q., Huang, T., Wang, Y.Q., Wang, Z.P., Liang, Y., Huang, T.B., Zhang, H.Y., Sun, W., Wang, Y., 2020a. COVID-19 patients' clinical characteristics, discharge rate, and fatality rate of meta-analysis. *J. Med. Virol.*
- Li, W., Zhang, J., Xiao, S., Sun, L., 2020b. Characteristics of health worker fatality in China during the outbreak of COVID-19 infection. *J. Infect.*
- Lipsey, M., Wilson, D., 2000. *Practical Meta-analysis*. Sage Publications, Thousand Oaks, CA.
- Liu, Y., Yang, Y., Zhang, C., Huang, F., Wang, F., Yuan, J., Wang, Z., Li, J., Feng, C., Zhang, Z., Wang, L., Peng, L., Chen, L., Qin, Y., Zhao, D., Tan, S., Yin, L., Xu, J., Zhou, C., Jiang, C., Liu, L., 2020. Clinical and biochemical indexes from 2019-nCoV infected patients linked to viral loads and lung injury. *Sci. China Life Sci.* 63, 364–374.
- Liu, Z.Y., Li, T.S., Wang, Z., Xu, Z.J., Wang, H.L., Yu, Y., Du, T.K., Bai, Y., Qiu, Z.F., Lü, W., Fan, H.W., Ma, X.J., Zhou, B.T., Wang, A.X., Cai, B.Q., Deng, G.H., Ni, A.P., 2003. Clinical features and therapy of 106 cases of severe acute respiratory syndrome. *Zhonghua Nei Ke Za Zhi* 42, 373–377.
- Lung, F.-W., Lu, Y.-C., Chang, Y.-Y., Shu, B.-C., 2009. Mental symptoms in different health professionals during the SARS attack: a follow-up study. *Psychiatr. Q.* 80, 107–116.
- Maulik, P.K., Mascarenhas, M.N., Mathers, C.D., Dua, T., Saxena, S., 2011. Prevalence of intellectual disability: a meta-analysis of population-based studies. *Res. Dev. Disab.* 32, 419–436.
- Maunders, R.G., Leszcz, M., Savage, D., Adam, M.A., Peladeau, N., Romano, D., Rose, M., Schulman, R.B., 2008. Applying the lessons of SARS to pandemic influenza: an evidence-based approach to mitigating the stress experienced by healthcare workers. *Can. J. Public Health-Revue Can. Sante Publ.* 99, 486–488.
- Memish, Z.A., Zumla, A.L., Assiri, A., 2013. Middle east respiratory syndrome coronavirus infections in health care workers. *N Engl. J. Med.* 369, 884–886.
- Minichino, A., Rutigliano, G., Merlino, S., Davies, C., Oliver, D., De Micheli, A., Patel, R., McGuire, P., Fusar-Poli, P., 2019. Unmet needs in patients with brief psychotic disorders: Too ill for clinical high risk services and not ill enough for first episode services. *Eur. Psychiatry* 57, 26–32.
- Moazzami, B., Razavi-Khorasani, N., Dooghaie Moghadam, A., Farokhi, E., Rezaei, N., 2020. COVID-19 and telemedicine: immediate action required for maintaining healthcare providers well-being. *J. Clin. Virol.: Off. Publ. Pan Am. Soc. Clin. Virol.* 126, 104345–104345.
- Moher, D., Liberati, A., Tetzlaff, J., Altman, D.G., Group, P., 2009. Preferred reporting items for systematic reviews and meta-analyses: the PRISMA statement. *BMJ* 339, b2535.
- Nam, H.-S., Yeon, M.-Y., Park, J.W., Hong, J.-Y., Son, J.W., 2017. Healthcare worker infected with Middle East Respiratory Syndrome during cardiopulmonary resuscitation in Korea, 2015. *Epidemiol. Health* 39.
- Nickell, L.A., Crighton, E.J., Tracy, C.S., Al-Enazy, H., Bolaji, Y., Hanjrah, S., Hussain, A., Makhlof, S., Upshur, R.E.G., 2004. Psychosocial effects of SARS on hospital staff: survey of a large tertiary care institution. *Can. Med. Assoc. J.* 170, 793–798.

- Paudel, S., Danggal, G., Chalise, A., Bhandari, T.R., Danggal, O., 2020. The coronavirus pandemic: what does the evidence show? *J. Nepal Health Res. Council* 18, 1–9.
- Poon, E., Liu, K.S., Cheong, D.L., Lee, C.K., Yam, L.Y.C., Tang, W.N., 2004. Impact of severe respiratory syndrome on anxiety levels of front-line health care workers. *Hong Kong Med. J.* = *Xianggang yi xue za zhi* 10, 325–330.
- Puliatti, S., Eissa, A., Eissa, R., Amato, M., Mazzone, E., Dell'Oglio, P., Sighinolfi, M.C., Zocer, A., Micali, S., Bianchi, G., Patel, V., Wiklund, P., Coelho, R.F., Bernhard, J.-C., Dasgupta, P., Mottrie, A., Rocco, B., 2020. COVID-19 and Urology: a comprehensive review of the literature. *BJU Int.*
- Rambaldini, G., Wilson, K., Rath, D., Lin, Y.L., Gold, W.L., Kapral, M.K., Straus, S.E., 2005. The impact of severe acute respiratory syndrome on medical house staff - A qualitative study. *J. Gen. Internal Med.* 20, 381–385.
- Ran, L., Chen, X., Wang, Y., Wu, W., Zhang, L., Tan, X., 2020. Risk factors of healthcare workers with corona virus disease 2019: a retrospective cohort study in a designated hospital of Wuhan in China. *Clin. Infect. Dis.: Off. Publ. Infect. Dis. Soc. Am.*
- Ro, J.S., Lee, J.S., Kang, S.C., Jung, H.M., 2017. Worry experienced during the 2015 Middle East Respiratory Syndrome (MERS) pandemic in Korea. *PLoS One* 12, e0173234.
- Rodriguez-Morales, A.J., Cardona-Ospina, J.A., Gutiérrez-Ocampo, E., Villamizar-Peña, R., Holguin-Rivera, Y., Escalera-Antezana, J.P., Alvarado-Arnez, L.E., Bonilla-Aldana, D.K., Franco-Paredes, C., Henao-Martinez, A.F., Paniz-Mondolfi, A., Lagos-Grisales, G.J., Ramirez-Vallejo, E., Suárez, J.A., Zambrano, L.I., Villamil-Gómez, W.E., Balbin-Ramon, G.J., Rabaan, A.A., Harapan, H., Dhama, K., Nishiura, H., Kataoka, H., Ahmad, T., Sah, R., <https://www.lancovid.org>, L.A.N.o.C.D.-C.-R.L.-E.a., 2020. Clinical, laboratory and imaging features of COVID-19: a systematic review and meta-analysis. *Travel Med. Infect. Dis.*, 101623.
- Rogers, J.P., Chesney, E., Oliver, D., Pollak, T.A., McGuire, P., Fusar-Poli, P., Zandi, M.S., Lewis, G., David, A.S., 2020. Psychiatric and neuropsychiatric presentations associated with severe coronavirus infections: a systematic review and meta-analysis with comparison to the COVID-19 pandemic. *Lancet Psychiatry* 7, 611–627.
- Rutigliano, G., Merlino, S., Minichino, A., Patel, R., Davies, C., Oliver, D., De Micheli, A., McGuire, P., Fusar-Poli, P., 2018. Long term outcomes of acute and transient psychotic disorders: The missed opportunity of preventive interventions. *Eur. Psychiatry* 52, 126–133.
- Salazar de Pablo, G., Catalan, A., Fusar-Poli, P., 2019. Clinical validity of DSM-5 attenuated psychosis syndrome: advances in diagnosis, prognosis, and treatment. *JAMA Psychiatry*.
- Shacham, M., Hamama-Raz, Y., Kolerman, R., Mijiritsky, O., Ben-Ezra, M., Mijiritsky, E., 2020. COVID-19 factors and psychological factors associated with elevated psychological distress among dentists and dental hygienists in Israel. *Int. J. Environ. Res. Public Health* 17.
- Shah, K., Kamrai, D., Mekala, H., Mann, B., Desai, K., Patel, R.S., 2020. Focus on mental health during the coronavirus (COVID-19) pandemic: applying learnings from the past outbreaks. *Cureus* 12.
- Shanafelt, T., Ripp, J., Trockel, M., 2020. Understanding and addressing sources of anxiety among health care professionals during the COVID-19 pandemic. *JAMA*.
- Shih, F.-J., Gau, M.-L., Kao, C.-C., Yang, C.-Y., Lin, Y.-S., Liao, Y.-C., Sheu, S.-J., 2007. Dying and caring on the edge: Taiwan's surviving nurses' reflections on taking care of patients with severe acute respiratory syndrome. *Appl. Nurs. Res.* 20, 171–180.
- Stroup, D.F., Berlin, J.A., Morton, S.C., Olkin, I., Williamson, G.D., Rennie, D., Moher, D., Becker, B.J., Sipe, T.A., Thacker, S.B., 2000. Meta-analysis of observational studies in epidemiology: a proposal for reporting. Meta-analysis of Observational Studies in Epidemiology (MOOSE) group. *JAMA* 283, 2008–2012.
- Su, T.-P., Lien, T.-C., Yang, C.-Y., Su, Y.L., Wang, J.-H., Tsai, S.-L., Yin, J.-C., 2007. Prevalence of psychiatric morbidity and psychological adaptation of the nurses in a structured SARS caring unit during outbreak: A prospective and periodic assessment study in Taiwan. *J. Psychiatr. Res.* 41, 119–130.
- Tiwari, A., Chan, S., Wong, A., Tai, J., Cheng, K., Chan, J., Tsang, K., Hospital, N.T.F.o.A.-S.o.Q.M., 2003. Severe acute respiratory syndrome (SARS) in Hong Kong: patients' experiences. *Nurs. Outlook* 51, 212–219.
- Tortella-Feliu, M., Fullana, M.A., Pérez-Vigil, A., Torres, X., Chamorro, J., Littarelli, S.A., Solanes, A., Ramella-Cravaro, V., Vilar, A., González-Parra, J.A., Andero, R., Reichenberg, A., Mataix-Cols, D., Vieta, E., Fusar-Poli, P., Ioannidis, J.P.A., Stein, M.B., Radua, J., Fernández de la Cruz, L., 2019. Risk factors for posttraumatic stress disorder: an umbrella review of systematic reviews and meta-analyses. *Neurosci. Biobehav. Rev.* 107, 154–165.
- Troyer, E.A., Kohn, J.N., Hong, S., 2020. Are we facing a crashing wave of neuropsychiatric sequelae of COVID-19? Neuropsychiatric symptoms and potential immunologic mechanisms. *Brain Behav. Immun.*
- Valdés-Flórida, M.J., López-Díaz, Á., Palermo-Zeballos, F.J., Martínez-Molina, I., Martín-Gil, V.E., Crespo-Facorro, B., Ruiz-Veguilla, M., 2020. Reactive psychoses in the context of the COVID-19 pandemic: clinical perspectives from a case series. *Rev. Psiquiatr. Salud Ment.*
- Vieta, E., Perez, V., Arango, C., 2020. Psychiatry in the aftermath of COVID-19. *Rev. Psiquiatr. Salud Ment.* in press.
- Wang, C., Pan, R., Wan, X., Tan, Y., Xu, L., Ho, C.S., Ho, R.C., 2020. Immediate psychological responses and associated factors during the initial stage of the 2019 coronavirus disease (COVID-19) epidemic among the general population in China. *Int. J. Environ. Res. Public Health* 17.
- Whaibeh, E., Mahmoud, H., Naal, H., 2020. Telemental health in the context of a pandemic: the COVID-19 experience. *Curr. Treat. Options Psychiatry* 1–5.
- Williamson, V., Murphy, D., Greenberg, N., 2020. COVID-19 and experiences of moral injury in front-line key workers. *Occup. Med. (Oxf., Engl.)*.
- Wong, J., Cheung, E.P.T., Cheung, V., Cheung, C., Chan, M.T.Y., Chua, S.E., McAlonan, G.M., Tsang, K.W.T., Ip, M.S.M., 2004a. Psychological responses to the SARS outbreak in healthcare students in Hong Kong. *Med. Teacher* 26, 657–659.
- Wong, T.W., Lee, C.K., Tam, W., Lau, J.T.F., Yu, T.S., Lui, S.F., Chan, P.K.S., Li, Y.G., Breese, J.S., Sung, J.J.Y., Parashar, U.D., Outbreak Study, G., 2004b. Cluster of SARS among medical students exposed to single patient, Hong Kong. *Emerg. Infect. Dis.* 10, 269–276.
- Xiang, Y.T., Jin, Y., Cheung, T., 2020. Joint International collaboration to combat mental health challenges during the coronavirus disease 2019 pandemic. *JAMA Psychiatry*.
- Xu, J., Yang, M., Liu, Z., 2003. Clinical analysis of patients with severe acute respiratory syndrome in Beijing area. *Zhonghua Jie He He Hu Xi Za Zhi* 26, 683–685.
- Yan, Y., Shin, W.I., Pang, Y.X., Meng, Y., Lai, J., You, C., Zhao, H., Lester, E., Wu, T., Pang, C.H., 2020. The first 75 days of novel coronavirus (SARS-CoV-2) outbreak: recent advances, prevention, and treatment. *Int. J. Environ. Res. Public Health* 17.
- Yip, H.K., Tsang, P.C., Samaranyake, L.P., Li, A.H., 2007. Knowledge of and attitudes toward severe acute respiratory syndrome among a cohort of dental patients in Hong Kong following a major local outbreak. *Commun. Dent. Health* 24, 43–48.
- Yip, P.S., Cheung, Y.T., Chau, P.H., Law, Y.W., 2010. The impact of epidemic outbreak: the case of severe acute respiratory syndrome (SARS) and suicide among older adults in Hong Kong. *Crisis* 31, 86–92.
- Yung, A.R., Yuen, H.P., McGorry, P.D., Phillips, L.J., Kelly, D., Dell'Olio, M., Francey, S.M., Cosgrave, E.M., Killackey, E., Stanford, C., Godfrey, K., Buckley, J., 2005. Mapping the onset of psychosis: the comprehensive assessment of at-risk mental states. *Aust. N. Z. J. Psychiatry* 39, 964–971.
- Zhang, S.X., Huang, H., Wei, F., 2020a. Geographical distance to the epicenter of Covid-19 predicts the burnout of the working population: Ripple effect or typhoon eye effect? *Psychiatry Res.* 288, 112998.
- Zhang, W.-R., Wang, K., Yin, L., Zhao, W.-F., Xue, Q., Peng, M., Min, B.-Q., Tian, Q., Leng, H.-X., Du, J.-L., Chang, H., Yang, Y., Li, W., Shangguan, F.-F., Yan, T.-Y., Dong, H.-Q., Han, Y., Wang, Y.-P., Cosci, F., Wang, H.-X., 2020b. Mental health and psychosocial problems of medical health workers during the COVID-19 epidemic in China. *Psychother. Psychosom.* 1–9.
- Zhu, J., Ji, P., Pang, J., Zhong, Z., Li, H., He, C., Zhang, J., Zhao, C., 2020. Clinical characteristics of 3,062 COVID-19 patients: a meta-analysis. *J. Med. Virol.*
- Zulkifli, N., Sivapatham, S., Guan, N., 2020. Brief psychotic disorder in relation to coronavirus, COVID-19 outbreaks: a case report. *Malays. J. Psychiatry* 2020, 29.