


The callus fracture sign: a radiological predictor of progression to hypertrophic non-union in diaphyseal tibial fractures

S. Salih¹  · C. Blakey¹ · D. Chan¹ · J. C. McGregor-Riley¹ · S. L. Royston¹ · S. Gowlett² · D. Moore² · M. G. Dennison¹

Received: 26 October 2013 / Accepted: 19 November 2015 / Published online: 24 November 2015
© The Author(s) 2015. This article is published with open access at Springerlink.com

Abstract We report a radiological sign which predicts progression to hypertrophic non-union for fractures of the tibial diaphysis. Radiographs of 46 tibial fractures were reviewed independently by four orthopaedic trauma surgeons and two musculoskeletal radiologists. Patients were identified from a database of tibial fractures managed with Ilizarov frame fixation. There were 23 fractures that progressed to non-union requiring further surgery. The controls were 23 fractures that had united without need for further surgery at 1-year follow-up. Radiographs selected were the first images taken following frame removal. All radiographs were anonymised and randomized prior to review. Presence of the callus fracture sign was identified in 16 radiographs of the fractures that progressed to non-union, and 7 of the united fracture group. Sensitivity is 69.6 %. Specificity is 91.4 %. Positive and negative predictive values are 88.9 and 75.0 %, respectively. These results compare favourably with computerised tomography for predicting non-union. Intra- and inter-observer reliability was good ($\kappa = 0.68$), and moderate ($\kappa = 0.57$), respectively. The callus fracture sign is a useful radiological predictor of progression to non-union and may represent insufficient mechanical stability at the fracture site.

Keywords Ilizarov technique · Tibial fracture · Fracture healing · Radiography · X-ray · Hypertrophic non-union

Introduction

Fracture union is dependent on the biological environment and the mechanical properties of the fracture site [1]. Hypertrophic non-union can occur in the presence of an appropriate biological response but inadequate mechanical stability. In the context of the Ilizarov method, fractures heal by secondary or indirect bone healing, i.e. in the presence of relative stability provided by the circular fine-wire fixator, the fracture heals by periosteal bony callus (intramembranous ossification) at the periphery of the fracture and fibrocartilaginous bridging callus (endochondral ossification) between bone ends [1, 2]. Here the term ‘bridging callus’ is used to describe the appearance of calcified tissue between the ends of a fracture. Several authors define union as the radiological presence of bridging callus at 3 out of 4 cortices on AP and lateral views [3, 4]. The classic elephant’s foot appearance of a hypertrophic non-union (Fig. 1) results from instability preventing ossification with further cartilaginous material continued to be laid down [1].

The incidence of aseptic non-union for fractures of the tibial shaft is 1.5 % in this unit. The senior author has identified a radiological sign in a series of fractures thought to have united but which progressed to established non-union after removal of fixation. In these cases, bridging callus, as defined above, was seen to join the bone ends across the fracture site in more than one view but, on closer examination, the fracture cleavage can be seen to extend beyond the original cortical boundary of the bone but not to the boundary of the bridging callus (Fig. 2). This detail in

✉ S. Salih
saifsalih@hotmail.com

M. G. Dennison
Mick.Dennison@sth.nhs.uk

¹ Department of Trauma and Orthopaedics, Northern General Hospital, Herres Rd, Sheffield S5 7AU, UK

² Department of Radiology, Northern General Hospital, Sheffield, UK

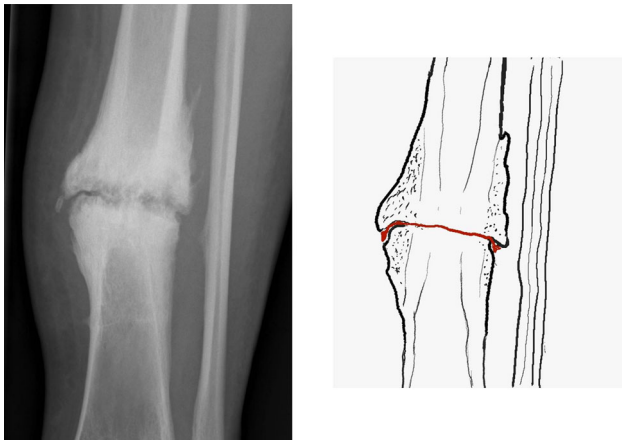


Fig. 1 A hypertrophic non-union in a diaphyseal tibial fracture. The line drawing depicts the extension of the fracture line to the periphery of the callus

Callus fracture sign

The callus fracture sign is the extension of the fracture line beyond the cortex into the callus but NOT to the edge of the callus. As shown below:

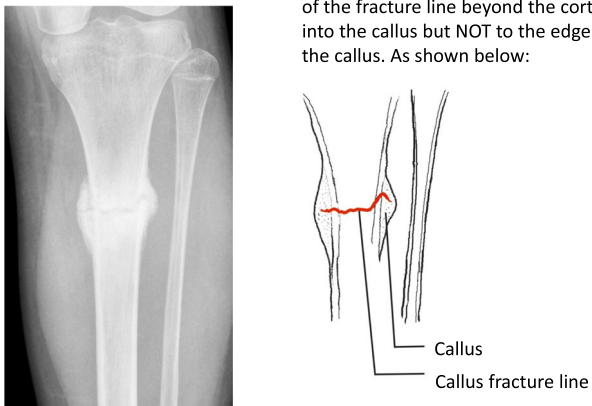


Fig. 2 An example of the callus fracture sign. The line drawing highlights the extension of the fracture line beyond the original cortical boundary but not to the periphery of the fracture callus

interpretation of the characteristics of bridging callus has not been identified previously. We have labelled this the ‘callus fracture sign’ and recognise it to be predictive for progression to non-union. The study aims to establish the validity of this radiological sign and its reliability for clinical use.

Materials and methods

This study was registered with the local audit and research department as a service evaluation, and ethical approval was not required. The study was performed by retrospectively reviewing patients on the Ilizarov database. This database is data prospectively collected from all patients treated by the Ilizarov method.

Between October 2000 and January 2011, a total of 1533 fractures of the tibia treated by the Ilizarov technique were recorded in the database. Fractures of the tibia treated by the Ilizarov technique but went on to an established hypertrophic non-union needing revision frame fixation were included. We excluded patients with confirmed or suspected infection, internal fixation metalwork remaining in situ, atrophic non-unions, and patients with an incomplete set of medical notes or radiographic images. A total of 23 suitable cases were identified; all were closed injuries. A same number of age- and sex-matched patients were identified as controls; these patients had successful union after the same treatment with an Ilizarov frame and had a minimum of 12 months in follow-up. This provided 46 pairs of radiographs.

Radiographs studied were the first images obtained after removal of the Ilizarov all-wire circular fixator. The vast majority of the Ilizarov fixators are removed in an outpatient clinic with the post-removal AP and lateral radiographs taken immediately after. Both AP and lateral views were reviewed in all cases with the 46 pairs of images anonymised and randomised prior to being assessed by six assessors. Three were trauma consultants, two were specialist musculoskeletal radiology consultants, and one was a trauma and limb reconstruction fellow. An example of the ‘Callus Fracture’ sign (Fig. 2) was given with clear written instructions to the assessors for identifying it. An example of an established hypertrophic non-union (Fig. 1) was also provided, and the assessors were permitted to acknowledge whether they felt this was present but it did not count as the ‘Callus Fracture’ sign being present. We have used the term callus fracture sign to describe the extension of the fracture cleavage beyond the limits of the cortex but within the boundary of the callus.

Reviewers were asked to identify the presence or absence of a ‘callus fracture sign’ in either view. The instructions given to the reviewers are shown in Fig. 3. Four or more reviewers had to agree on the presence of the sign in order for it to be considered a positive finding. The senior author was asked to review the radiographs on two separate occasions, after a 6-month interval, to allow for analysis of intra-observer reliability.

Statistics

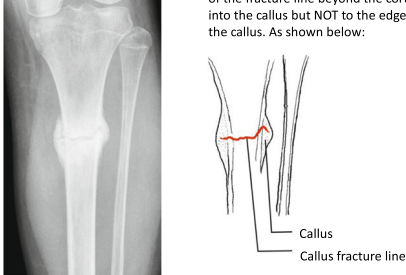
A contingency table summarising the results was constructed. Pearson’s Chi-square values were calculated using SPSS v17.0 (IBM). True positives (TP) were defined as those with the callus fracture sign who developed a non-union. True negatives (TN) were defined as those without the callus fracture sign who united successfully. False negatives (FN) were those who did not have the callus

Instructions

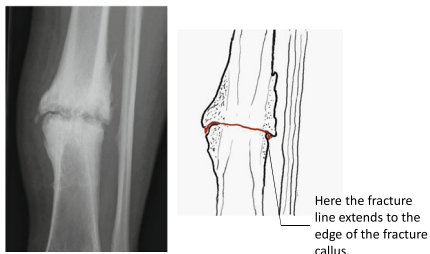
- Please look at the following radiographs and decide whether the ‘callus fracture sign’ is present or not.
- An example of the sign is on the next slide.

Callus fracture sign

The callus fracture sign is the extension of the fracture line beyond the cortex into the callus but NOT to the edge of the callus. As shown below:



Not this.



Here the fracture line extends to the edge of the fracture callus.

If you feel the radiograph shows this then the callus fracture sign is not present. If you feel that it is a non-union that does not display the fracture callus sign then record this on the form.

Radiographs

- All the radiographs are in one folder with file names as numbers xxxxxx_yy (1/2)
- yy corresponds to the number on the response sheet. The first bank of numbers can be ignored.
- For each radiograph mark whether you feel the sign is present or not.
- If you wish you can predict whether the fracture progressed to union or not too but this is not essential.

THANK YOU!

Fig. 3 Instructions were provided to the authors as a powerpoint presentation. The slides are shown

fracture sign and developed a non-union. False positives (FP) were those who had the sign and united. From this sensitivity (SN), specificity (SP), positive predictive value (PPV), negative predictive value (NPV) and accuracy (AC) were calculated using the following formulas:

$$SN = TP / (TP + FN), \quad SP = TN / (TN + FP),$$

$$PPV = TP / (TP + FP), \quad NPV = TN / (TN + FN)$$

$$AC = (TP + TN) / (TP + FP + TN + FN)$$

The κ statistic was calculated using Fleiss’ modification for multiple observers using SPSS v17.0 (IBM, USA) [5] A

κ value of <0.2 was considered poor, 0.21–0.40 fair, 0.41–0.60 moderate, 0.61–0.80 good, 0.81–1.00 very good [6]. Categorical data were analysed using the Chi-square test. A p value of <0.05 was considered statistically significant.

Results

Table 1 shows the results of the senior author alone. Table 2 shows the results when four or more of the assessors considered the callus fracture sign to be present.

Table 1 Contingency tables summarising results for the senior author

	Senior author review	
	Union	Non-union
Callus fracture sign present	4	14
Callus fracture sign absent	19	9
χ^2	9.127	
<i>p</i> value	0.006	

Table 2 Contingency table summarising results when four or more of the reviewers independently assessed the callus fracture sign to be present

	Agreement of four or more reviewers	
	Union	Non-union
Callus fracture sign present	2	21
Callus fracture sign absent	16	7
χ^2	17.889	
<i>p</i> value	<0.001	

Presence of the callus fracture sign was agreed in 16 radiographs of the fractures that had progressed to non-union, and 2 of the united fracture group. Using the combined results, sensitivity is 69.6 %, specificity is 91.3 %, positive and negative predictive values are 88.9 and 75.0 %, respectively. Accuracy is 80.6 %. Overall, intra-observer reliability was good ($k = 0.68$) and inter-observer reliability was at the high end of the moderate range ($k = 0.58$).

Discussion

Perren's strain theory of fracture healing suggests that the degree of inter-fragmentary strain dictates the type of tissue formed between the fracture ends [1]. It has been demonstrated that the tissue within a non-union site contains mesenchymal progenitor cells that are capable of transforming into cartilage and bone forming cells [7]. When a non-union is deemed to be hypertrophic, increasing stability, for example by fracture distraction, can lead to bony union [8]. Treatment is aimed at increasing mechanical stability and thereby initialising mineralisation of fibrocartilage.

The point at which a tibial fracture is united is a key step in management but is of particular importance in those treated with an Ilizarov frame as it determines when the fixator can be removed. In our unit, like others, this is done when a collection of clinical features are present: bridging callus on the radiographs; the patient is weight-bearing

painlessly; and there is no clinically detectable movement at the fracture site. Once deemed a fracture has united, the frame is dynamised then disconnected. If there is no movement between the rings on manual stressing, it is likely no movement has occurred at the fracture site and the frame then removed. These criteria are similar to those described by Sarmiento [9].

These results demonstrate a significant relationship between the callus fracture sign and a requirement for revision surgery. If the callus shows a defect, there may be the tendency for this to break down rather than consolidate if greater stability is not provided. The callus fracture sign is thought to represent a prognostic sign where the visible fracture line on the radiograph evolves into a cleavage plane which would eventually form a hypertrophic non-union when the plane reaches the outer surface of the callus.

Determining fracture union is not straightforward. The original work done on rabbit tibias demonstrated that callus strength peaks when three cortices are bridged by callus [4]. However, in humans radiological union and mechanical strength do not correlate well [10, 11]. As a result, attempts have been made to devise scoring criteria to determine fracture union. Although these scoring criteria have good inter- and intra-observer reliability [12], they correlate poorly with union [10] or have not been validated [13]. Furthermore, these have been designed to assess union in a tibia treated with intramedullary nailing; this is a scenario where the implant is not normally removed after union unlike a circular frame. If these scoring systems are applied to fractures treated with Ilizarov circular frames, there is a risk the fixation may be removed before fracture union is complete then prompting the need for revision surgery. It is unlikely that the callus fracture sign can be applied to fractures treated by internal fixation as, unlike in Ilizarov treatment, it is difficult to subsequently alter the construct to affect the overall rigidity.

CT has been used to diagnose non-union in such cases. The callus fracture sign is similar to CT with respect to sensitivity, specificity and accuracy [14]. Furthermore, one-seventh of the patients in this study underwent unnecessary surgery because of a false-positive CT result. The callus fracture sign has a lower negative predictive value. This may be explained by those with a NPP included cases that had a line across the fracture but not beyond the cortex, and a small number of non-union cases which the assessors felt displayed signs of an established non-union but not the callus fracture sign. If these cases were removed from the analysis, the false-negative rate would be lower and sensitivity, negative predictive value and accuracy would all be improved.

We suggest that those patients demonstrating the callus fracture sign, i.e. the cleavage plane of the fracture

extending beyond the original cortical boundary of the bone but remaining within the boundary of the callus as in Fig. 2, should undergo a period of increased fracture stabilization prior to removal of their fixators. In our unit this is done by distraction across the fracture site to place the callus under tension [8].

The limitations of this study include the retrospective design and relatively small number of cases. All the non-unions identified for this study were diaphyseal fractures and the findings cannot be extrapolated to other regions of the tibia. Whilst it may seem logical to extend this clinical sign to metaphyseal and epiphyseal fractures, we do not have the data to confirm this.

The usual progression of treatment with circular fixation is progressive destabilisation of the frame prior to removal. These results suggest the callus fracture line is an indicator that stability may be inadequate and the reversal of this standard protocol to a period of increased stability from the frame, prior to further testing of fracture stability, should reduce the risk of development of hypertrophic non-union.

Acknowledgments The authors wish to thank Maria Vincent who manages the database and interrogated it to allow identification of the cases used in this study.

Compliance with ethical standards

Conflict of interest The authors whose names are listed certify that they have no affiliations with or involvement in any organisation or entity with any financial interest (such as honoraria; educational grants; participation in speakers' bureaus; membership, employment, consultancies, stock ownership, or other equity interest; and expert testimony or patent-licensing arrangements), or non-financial interest (such as personal or professional relationships, affiliations, knowledge or beliefs) in the subject matter or materials discussed in this manuscript.

Ethical standards The project was registered with the local audit and research department and classified as a service evaluation. Ethical approval was not required.

Open Access This article is distributed under the terms of the Creative Commons Attribution 4.0 International License (<http://creativecommons.org/licenses/by/4.0/>), which permits unrestricted use, distribution, and reproduction in any medium, provided you give

appropriate credit to the original author(s) and the source, provide a link to the Creative Commons license, and indicate if changes were made.

References

1. Perren SM (2002) Evolution of the internal fixation of long bone fractures. The scientific basis of biological internal fixation: choosing a new balance between stability and biology. *J Bone Joint Surg Br* 84:1093–1110
2. Buchholz RW (2005) Rockwood and green's fractures in adults. Lippincott Williams and Wilkins, Philadelphia
3. Whelan DB et al (2002) Interobserver and intraobserver variation in the assessment of the healing of tibial fractures after intramedullary fixation. *J Bone Joint Surg Br* 84:15–18
4. Panjabi MM, Walter SD, Karuda M, White AA, Lawson JP (1985) Correlations of radiographic analysis of healing fractures with strength: a statistical analysis of experimental osteotomies. *J Orthop Res* 3:212–218
5. Fleiss JL (1971) Measuring nominal scale agreement among many raters. *Psychol Bull* 76:378
6. Hubert L (1977) Kappa revisited. *Psychol Bull* 84:289–297
7. Iwakura T et al (2009) Human hypertrophic nonunion tissue contains mesenchymal progenitor cells with multilineage capacity in vitro. *J Orthop Res* 27:208–215
8. Saleh M, Royston S (1996) Management of nonunion of fractures by distraction with correction of angulation and shortening. *J Bone Joint Surg Br* 78:105–109
9. Sarmiento A, Sobol P (1984) Prefabricated functional braces for the treatment of fractures of the tibial diaphysis. *J Bone Joint Surg Am* 66:1328–1339
10. Hammer RR, Hammerby S, Lindholm B (1985) Accuracy of radiologic assessment of tibial shaft fracture union in humans. *Clin Orthop Relat Res* (199):233–238
11. Eastaugh-Waring SJ, Joslin CC, Hardy JRW, Cunningham JL (2009) Quantification of fracture healing from radiographs using the maximum callus index. *Clin Orthop* 467:1986–1991
12. Kooistra BW et al (2010) The radiographic union scale in tibial fractures: reliability and validity. *J Orthop Trauma* 24(Suppl 1):S81–S86
13. Whelan DB et al (2010) Development of the radiographic union score for tibial fractures for the assessment of tibial fracture healing after intramedullary fixation. *J Trauma* 68:629–632
14. Bhattacharyya T et al (2006) The accuracy of computed tomography for the diagnosis of tibial nonunion. *J Bone Joint Surg Am* 88:692–697