

## EDGE ARTICLE

Cite this: *Chem. Sci.*, 2021, 12, 14901

All publication charges for this article have been paid for by the Royal Society of Chemistry



Received 9th September 2021

Accepted 29th October 2021

DOI: 10.1039/d1sc05008g

rsc.li/chemical-science

## Rapid glycoconjugation with glycosyl amines†

Mareike A. Rapp, Oliver R. Baudendistel, Ulrich E. Steiner   
and Valentin Wittmann \*

Conjugation of unprotected carbohydrates to surfaces or probes by chemoselective ligation reactions is indispensable for the elucidation of their numerous biological functions. In particular, the reaction with oxyamines leading to the formation of carbohydrate oximes which are in equilibrium with cyclic *N*-glycosides (oxyamine ligation) has an enormous impact in the field. Although highly chemoselective, the reaction is rather slow. Here, we report that the oxyamine ligation is significantly accelerated without the need for a catalyst when starting with glycosyl amines. Reaction rates are increased up to 500-fold compared to the reaction of the reducing carbohydrate. For comparison, aniline-catalyzed oxyamine ligation is only increased 3.8-fold under the same conditions. Glycosyl amines from mono- and oligosaccharides are easily accessible from reducing carbohydrates *via* the corresponding azides by using Shoda's reagent (2-chloro-1,3-dimethylimidazolium chloride, DMC) and subsequent reduction. Furthermore, glycosyl amines are readily obtained by enzymatic release from *N*-glycoproteins making the method suited for glycomic analysis of these glycoconjugates which we demonstrate employing RNase B. Oxyamine ligation of glycosyl amines can be carried out at close to neutral conditions which makes the procedure especially valuable for acid-sensitive oligosaccharides.

## Introduction

Carbohydrate components of glycoproteins and glycolipids are massively involved in both physiological and pathological recognition events,<sup>1</sup> and the elucidation of their biological functions is a worldwide endeavor.<sup>2</sup> Essential for unraveling carbohydrate recognition partners is the conjugation of isolated glycans to surfaces or analytical probes by chemoselective ligation reactions.<sup>3</sup> In particular, the oxyamine ligation, *i.e.*, the reaction of the aldehyde function of unprotected (reducing) glycans with oxyamines, has found widespread application in the field<sup>3a</sup> for example to prepare carbohydrate microarrays,<sup>4</sup> nanoparticles,<sup>5</sup> or fluorescently labeled carbohydrates.<sup>6</sup> The reaction has also been used to prepare glycopeptide mimetics,<sup>7</sup> PET labeling probes,<sup>8</sup> and carbohydrate polymers.<sup>9</sup> Although the ligation is highly chemoselective, it suffers from low reaction rates, especially when carbohydrates with a 2-acetamido substituent, such as GlcNAc derivatives, are reacted.<sup>10</sup> In contrast to open-chain aldehydes, the aldehyde function of carbohydrates is masked by formation of a hemiacetal that accounts to more than 99.9% in equilibrium, shielding the carbonyl group from nucleophilic attack of the oxyamine.

Oxime formation<sup>11</sup> can be catalyzed by aniline and derivatives thereof as pioneered by Jenks<sup>12</sup> and further developed by Dawson.<sup>13</sup> Later, Jensen reported that the oxyamine ligation of carbohydrates in analogy with oxime formation of open-chain aldehydes is catalyzed by aniline<sup>14</sup> and derivatives, such as 1,4-phenylenediamine (PDA).<sup>15</sup> However, aniline and especially PDA, that have to be added in high concentrations to be effective, are toxic<sup>16</sup> and can cause the formation of *N*-arylglycosylamine side products. Furthermore, PDA is chemically unstable, leading to deeply colored solutions even after reaction times of only a few hours and to precipitate formation.<sup>16</sup> Here, we report that the rate of the oxyamine ligation of carbohydrates can be significantly accelerated without the need of a catalyst by using readily available glycosyl amines. The resulting ligation rates are increased up to 500-fold compared to the reaction of the reducing carbohydrate. For comparison, aniline-catalyzed oxyamine ligation is only increased 3.8-fold under the same conditions and 5-fold in the best case.

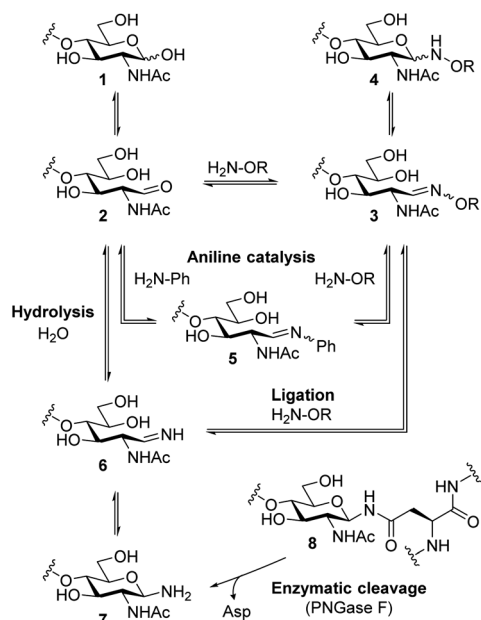
## Results and discussion

Scheme 1 shows possible reaction pathways of the oxyamine ligation of GlcNAc derivatives **1** which represent the reducing end of *N*-glycans. In the uncatalyzed reaction, the oxyamine reacts with the open-chain aldehyde **2** leading to oxime **3** that exists in equilibrium with *N*-glycosyloxamine **4**. The catalytic intermediate of the aniline-catalyzed oxyamine ligation<sup>14</sup> reaction is glycosyl imine **5**. This phenyl imine is more easily protonated than the parent carbonyl compound **2** which

Department of Chemistry and Konstanz Research School Chemical Biology (KoRS-CB), University of Konstanz, Universitätsstraße 10, 78457 Konstanz, Germany. E-mail: mail@valentin-wittmann.de

† Electronic supplementary information (ESI) available: Experimental procedures, supplementary figures, kinetic treatment of hydrolysis and ligation reaction, MS data. See DOI: 10.1039/d1sc05008g

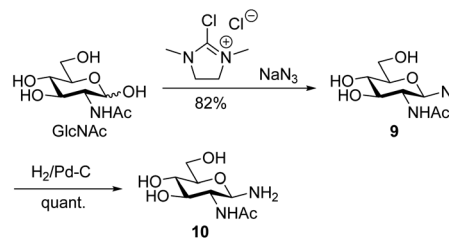




Scheme 1 Simplified reaction pathways of oxyamine ligation of reducing oligosaccharides and oligosaccharyl amines.

facilitates the attack of the oxyamine under weakly acidic conditions. While searching for an alternative to aniline catalysis that would allow fast ligation without a large excess of an external catalyst, we noticed that glycans enzymatically released from *N*-glycoproteins **8** by use of peptide *N*-glycosidase F (PNGase F)<sup>17</sup> are obtained as free amines **7** that are in equilibrium with imine **6**. Imine **6** resembles catalytic intermediate **5** of aniline catalysis. Thus, glycosyl amines **7** might be suitable substrates for rapid oxyamine ligation. It is expected that **6** is much more easily protonated than aryl imine **5**, rendering it a more efficient intermediate for oxime formation, potentially also at higher (neutral) pH. The extent of the imine  $pK_a$  decrease caused by the phenyl group can be estimated by comparing the  $pK_a$  values of glucosyl amine (5.6) and glucosyl aniline (<1.5).<sup>18</sup> Accordingly, we expect the  $pK_a$  of **6** to be several pH units higher than that of **5**.

Conventionally, oligosaccharyl amines **7** released from *N*-glycoproteins are used for oxyamine formation after hydrolysis to **2** (or **1**).<sup>3b</sup> Whereas hydrolysis is fast under acidic conditions, glycosyl amines **7** are stable enough at pH 8.5 to be acylated.<sup>19</sup> Since hydrolysis of glycosyl amines competes with their reaction with oxyamines leading to oximes **3**, we first determined hydrolysis rates of the GlcNAc-derived glycosyl amine **10** serving as model compound at different pH values. To prepare the glycosyl amine, GlcNAc was converted to glycosyl azide **9** using Shoda's reagent (2-chloro-1,3-dimethylimidazolium chloride, DMC)<sup>20</sup> followed by catalytic hydrogenation to give **10** in 82% yield (Scheme 2). Glycosyl amine **10** was dissolved in buffer at pH values ranging from 5 to 8 and the formation of hydrolysis product GlcNAc was followed by <sup>1</sup>H NMR spectroscopy. Measurement of the pH after the experiments ensured that the pH did not increase due to the release of NH<sub>3</sub>. Fig. 1 shows the kinetics of the hydrolysis experiments (for more details see



Scheme 2 Synthesis of GlcNAcNH<sub>2</sub> **10**.

ESI<sup>†</sup>). As expected, the hydrolytic stability of **10** increased with increasing pH. At pH 5, hydrolysis of 90% of imine **6** occurs within 22 min, whereas it takes 2.5 h at pH 6, 13.5 h at pH 7, and 43 h at pH 8.

Next, we studied the oxyamine ligation using glycosyl amine **10** which was freshly prepared from shelf-stable azide **9** for each experiment and ethoxyamine. Again, we followed the reaction by <sup>1</sup>H NMR spectroscopy. In contrast to HPLC analysis, NMR spectroscopy allowed us to quantify all products that formed during ligation in real time regardless of their stability during any workup. From the yields of the individual ligation products ((*E*)- and (*Z*)-oximes **11**, *N*-glycoside **12**) we determined combined yields (CY) in dependence on the reaction time (Fig. 2 and Table 1). For comparison, we also performed the ligation reaction with GlcNAc with and without aniline catalysis (see Fig. S1 and S2<sup>†</sup> for yields of individual ligation products and sample NMR spectra). Oxyamine ligations are typically carried out at a pH between 4 and 5. This pH represents the best compromise between reaction rate and equilibrium yield.<sup>21</sup> Due to the higher  $pK_a$  value of imine **6** compared to aldehyde form **2**, we expected that ligation reactions with glycosyl amine **10** are also efficient at higher, close to neutral pH values, a pH range that is more relevant for reactions of sensitive biomolecules. Accordingly, we carried out the experiments at pH 5 to 8. Fig. 2 shows the combined yield CY of ligation products over time and kinetic fits obtained from a simplified kinetic model with three processes described by pseudo first order kinetics: reversible

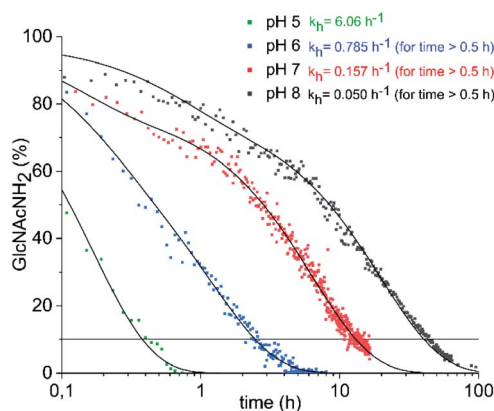


Fig. 1 Hydrolysis of GlcNAcNH<sub>2</sub> (**10**) in ammonium acetate-*d*<sub>7</sub> (pH 5–7) and KD<sub>2</sub>PO<sub>4</sub> buffer (pH 8) at 39 °C. The exponential decay constants given refer to the final 60–70% of decay (for details see ESI<sup>†</sup>).

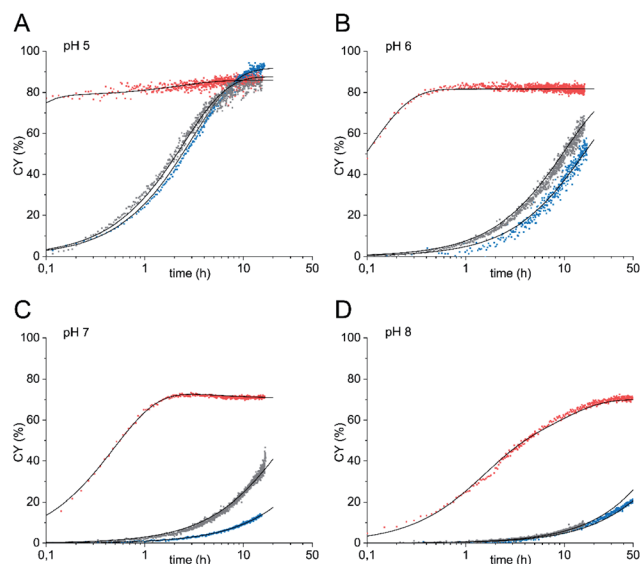


Fig. 2 Oxyamine ligation reaction of glycosyl amine **10** (red) and GlcNAc with 100 mM aniline (grey) or without aniline (blue) (36 mM sugar) with 5 equiv. ethoxyamine. (A) pH 5, (B) pH 6, (C) pH 7, (D) pH 8.

reaction from glycosyl amine **10** to ligation products ( $k_1$ ,  $k_{-1}$ ), reversible hydrolysis of **10** ( $k_h$ ,  $k_{-h}$ ), and reversible product formation from GlcNAc formed by hydrolysis or used as a starting material ( $k_2$ ,  $k_{-2}$ ) (for complete description see ESI†). In Table 1 combined yields after a reaction time of 1 h and the observed rate constants  $k_{\text{obs}}$  of product formation are given.

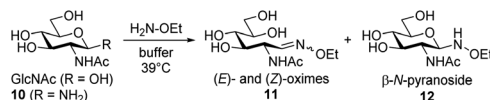
When glycosyl amine **10** was reacted at a concentration of 36 mM with an excess (5 equiv.) of ethoxyamine at pH 5, the ligation was so fast ( $k_1 = 25 \text{ h}^{-1}$ ), that even at the first data point

(taken after 6 min) CY was close to the equilibrium yield and thereafter increased only slightly further. In comparison, the reaction of GlcNAc resulted in a  $k_2$  of  $0.30 \text{ h}^{-1}$  and CY of only 25% after 1 h. The aniline-catalyzed reaction of GlcNAc was slightly faster under these conditions ( $k_2 = 0.35 \text{ h}^{-1}$ , 29% CY after 1 h). At pH 6, the reaction of glycosyl amine **10** reached a  $k_1$  of  $8.0 \text{ h}^{-1}$  and a plateau of approx. 82% CY after 1 h whereas CY of the reaction of GlcNAc ( $k_2 = 0.050 \text{ h}^{-1}$ ) was only 4.8% and that of the aniline-catalyzed reaction of GlcNAc ( $k_2 = 0.080 \text{ h}^{-1}$ ) was 7.6% at that time. At neutral pH, the reaction of glycosyl amine **10** reached a plateau after approx. 2 h (64% CY after 1 h,  $k_1 = 1.5 \text{ h}^{-1}$ ). The combined yields of the reaction of GlcNAc after 1 h were 0.9% with  $k_2 = 0.010 \text{ h}^{-1}$  (uncatalyzed) and 2.9% with  $k_2 = 0.030 \text{ h}^{-1}$  (aniline-catalyzed). Even at pH 8, the ligation reaction is significant for glycosyl amine **10** ( $k_1 = 0.37 \text{ h}^{-1}$ ), although the plateau is reached later, whereas both the uncatalyzed and the aniline-catalyzed reaction are too slow to be useful. These experiments clearly demonstrate that the use of glycosyl amines results in very fast oxyamine ligations over a broad pH range. Although hydrolysis and ligation are competing reactions, high ligation yields are obtained with **10** after short reaction times. The optimum of this advantage of the glycosyl amine ligation was found at a pH of 6 ( $k_1/k_2 = 160$ ) with not much loss until pH 7 ( $k_1/k_2 = 150$ ), which indicates that the distinct optimum should be somewhere between these two pH values.

So far, reactions were carried out at sugar concentrations of 36 mM. To demonstrate that ligations of glycosyl amine **10** can also be carried out at concentrations typically used during biological applications,<sup>22</sup> we determined reaction kinetics at sugar concentrations of 5 mM at pH values from 5 to 8 (Fig. 3A–D). In these experiments, we used 10 equiv. of ethoxyamine

Table 1 Oxyamine ligation reactions with sugar concentrations of 36 mM and 5 equiv. of ethoxyamine or 5 mM and 10 equiv. of ethoxyamine according to Fig. 2 and 3A–D. Given are the combined yields CY after 1 h and the rate constants  $k_{\text{obs}}$  resulting from the simplified kinetic model ( $k_1$  in case of reaction of glycosyl amine **10** and  $k_2$  in case of reaction of GlcNAc)

Entry	pH	Sugar	Aniline (100 mM)	36 mM sugar		5 mM sugar	
				CY after 1 h [%]	$k_{\text{obs}}$ [ $\text{h}^{-1}$ ]	CY after 1 h [%]	$k_{\text{obs}}$ [ $\text{h}^{-1}$ ]
1	5	<b>10</b>	—	81	25	71	10.6
2	5	GlcNAc	+	29	0.35	22	0.250
3	5	GlcNAc	—	25	0.30	5	0.051
4	6	<b>10</b>	—	82	8.0	63	5.0
5	6	GlcNAc	+	7.6	0.080	4	0.040
6	6	GlcNAc	—	4.8	0.050	1	0.012
7	7	<b>10</b>	—	64	1.5	37	0.55
8	7	GlcNAc	+	2.9	0.030	1	0.010
9	7	GlcNAc	—	0.9	0.010	0	0.002
10	8	<b>10</b>	—	25	0.37	6	0.060
11	8	GlcNAc	+	0.6	0.006	0	0.00
12	8	GlcNAc	—	0.5	0.005	0	0.0007



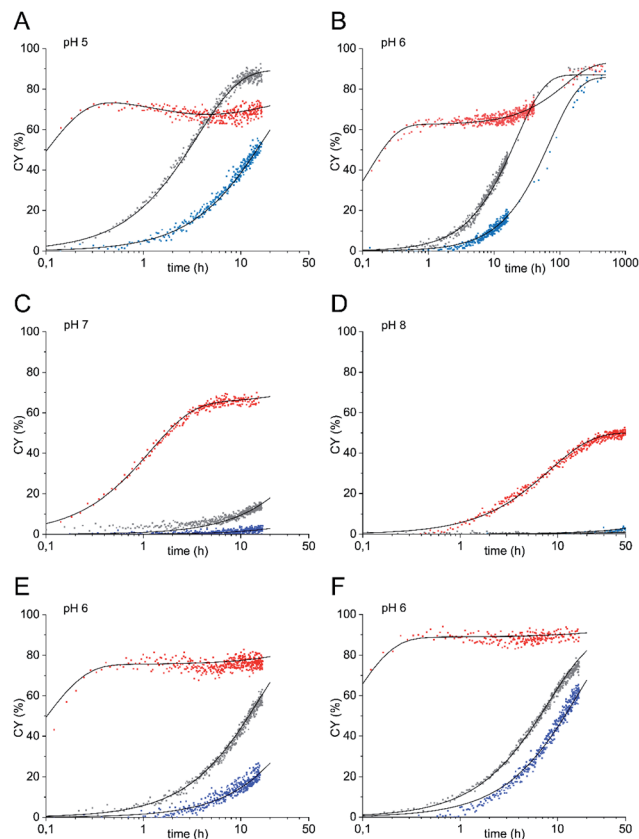


Fig. 3 Oxyamine ligation reaction of glycosyl amine **10** (red) and GlcNAc with 100 mM aniline (grey) or without aniline (blue) (5 mM sugar) with 10 equiv. of ethoxyamine at (A) pH 5, (B) pH 6, (C) pH 7, (D) pH 8, and at pH 6 with 20 equiv. (E) and 50 equiv. of ethoxyamine (F).

(corresponding to a concentration of 50 mM) instead of the 5 equiv. employed in the experiments with higher sugar concentration (corresponding to a concentration of 180 mM). The rationale behind the increased number of equivalents was that the ratio between hydrolysis and ligation reaction is dependent on the ratio of the absolute concentrations of water (55.5 M when used as the solvent) and oxyamine. Using only 5 equiv. would have resulted in a too high proportion of hydrolysis of **10** in parallel to the ligation reaction. Again, all reactions with glycosyl amine **10** were significantly faster than the aniline-catalyzed GlcNAc ligation at all pH values investigated. At pH 6, the rate constant  $k_1$  of the reaction of **10** is  $5.0 \text{ h}^{-1}$  which is 417 times higher than the rate constant of the uncatalyzed reaction of GlcNAc ( $k_2 = 0.012 \text{ h}^{-1}$ ) and 125 times higher than the rate constant of the aniline-catalyzed GlcNAc ligation ( $k_2 = 0.04 \text{ h}^{-1}$ ). At this pH, the gain of reaction rate of the ligation of glycosyl amine **10** compared to the aniline-catalyzed reaction of GlcNAc is highest. At pH 7,  $k_1$  of the reaction of **10** is 275 times higher than the rate constant  $k_2$  of the uncatalyzed reaction of GlcNAc and 55 times higher than the rate constant of the aniline-catalyzed GlcNAc ligation.

In the experiments represented by Fig. 3A–D, we observed two stages of the ligation reaction. First, glycosyl amine **10** reacts in a very fast reaction with the alkoxyamine to the ligation

products until consumption of **10** partly also by hydrolysis. In the second stage, hydrolysis product GlcNAc undergoes the slower ligation until the equilibrium is reached. The two stages of the reaction are particularly visible at pH 6 (Fig. 3B) where we followed the reaction over a longer reaction time of up to 500 h and partially at pH 7 (Fig. 3C) whereas at pH 8 the second step is too slow to be observed.

A particular case seems to prevail with the amine ligation kinetics at pH 5 shown in Fig. 3A. Here, after reaching a first plateau after about half an hour, the product yield slightly diminishes again and starts the ascent to the final plateau yield only after approx. 5 h. Formally, the pertinent kinetic curve, when drawn over a  $\log(t)$  scale, as employed in all figures shown here, exhibits three inflection points. Based on a system of linear differential equations for describing the kinetics, such a behavior can be only expected if at least four species are involved. In that case the reservoir of the fourth species X might first be filled from the fraction of product formed in the fast reaction through the amine pathway, thus leading to a decrease of the product before its renewed increase through the slower hydrolysis pathway. The species X might be an intermediate on the way from GlcNAc to oximes **11** or – more likely – a consecutive product to the main oxime ligation product, possibly the aminal formed upon addition of a further molecule of ethoxyamine – a species that remains unrecognized by NMR spectroscopy due to massive signal overlap. The kinetics has been treated based on a reaction scheme entailing both reaction pathways (see ESI† for a detailed discussion). Thereby, a smooth simulation of the observed kinetics is possible.

To test whether the proportion of hydrolysis of glycosyl amine **10** during the first reaction stage can be reduced by using a higher alkoxyamine concentration, we carried out the ligation reactions at pH 6 also with 20 and 50 equiv. of ethoxyamine<sup>23</sup> corresponding to concentrations of 100 mM and 250 mM, respectively (Fig. 3E and F). Pleasantly, this procedure increased the yield reached in the first stage of the reaction significantly to a CY of 76% after 1 h (20 equiv.) and even 90% after only 30 min (50 equiv.). For comparison, the aniline-catalyzed and the uncatalyzed reaction of GlcNAc resulted in yields of 5.8% at most at the same points of time for both 20 and 50 equiv. of oxyamine. The highest acceleration of the glycosyl amine ligation over the uncatalyzed reaction of GlcNAc by a factor of 500 is observed with 20 equiv. of ethoxyamine ( $k_1 = 8.0 \text{ h}^{-1}$ ,  $k_2 = 0.016 \text{ h}^{-1}$ ).

Next, we verified the applicability of the glycosyl amine ligation to the analysis of glycans released from a glycoprotein by treatment with PNGase F. Ribonuclease B (RNase B) is a commercially available glycoprotein with a single *N*-glycosylation site at Asn-34 to which glycans of the high-mannose type with 5 to 9 mannose residues ( $\text{Man}_{5-9}\text{GlcNAc}_2$ ) are attached.<sup>24</sup> To release the glycans, we treated RNase B with rapid PNGase F for 10 min at pH 7.5 (Fig. 4A, for experimental details see ESI†). After deglycosylation, the mixture was lyophilized and incubated with oxyamine-Cy3 conjugate **13** (75 mM, for complete formula see ESI†) in ammonium acetate buffer at 39 °C and pH 6 (Fig. 4B). **13** is a multipurpose reagent featuring an aminoxy group for carbohydrate ligation, an

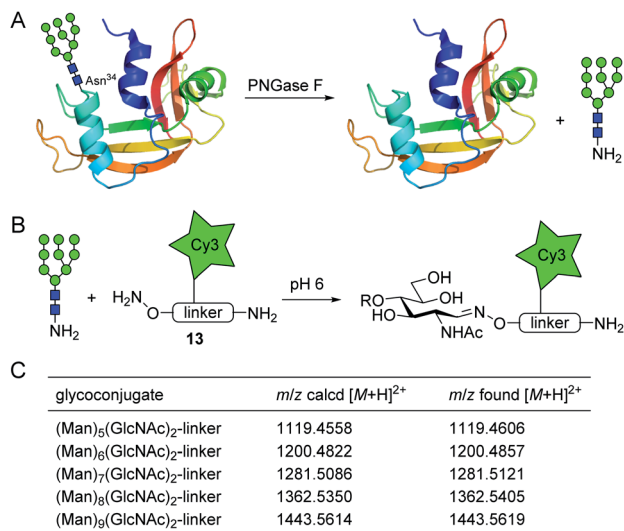


Fig. 4 Application of glycosyl amine ligation for glycan analysis of RNase B. (A) Release of *N*-linked glycans with PNGase F (exemplarily shown for Man<sub>9</sub>GlcNAc<sub>2</sub>). (B) Ligation of released glycosyl amines with oxamine-Cy3 conjugate **13**. (C) Results of nano-LC-MS/MS analysis of glycan conjugates.

additional amino group for the possibility of a further modification (*e.g.*, the preparation of carbohydrate microarrays), and a fluorophore with a permanent charge for detection by fluorescence spectroscopy or mass spectrometry. After 4 h, excess of **13** was scavenged by addition of aldehyde-functionalized TentaGel resin and protein components were removed with a 10 kDa molecular weight cut-off filter. The obtained crude glycoconjugate mixture was subjected to nano-LC-MS/MS analysis which allowed the identification of the glycan composition. As shown in Fig. 4C and S7,<sup>†</sup> all expected glycan conjugates could be identified which illustrates the efficiency of the new ligation procedure.

## Conclusions

In summary, we discovered that the oxamine ligation of unprotected carbohydrates can be significantly accelerated when using glycosyl amines as starting material. Ligation rates are not only faster than the uncatalyzed reaction of reducing sugars but also much faster than their aniline-catalyzed ligation. Glycosyl amines from mono- and oligosaccharides are easily accessible from reducing carbohydrates *via* the corresponding azides by using Shoda's reagent and subsequent reduction. They are furthermore obtained by PNGase-catalyzed release of *N*-glycans from glycoproteins facilitating their glycomic analysis which was illustrated by the analysis of *N*-glycans released from RNase B. The oxamine ligation of glycosyl amines can be carried out under very mild, close to neutral conditions which is beneficial for the analysis of acid-sensitive glycans, such as sialylated structures. The formation of glycoconjugates using glycosyl amines is expected to have a major impact on numerous applications in the field of glycobiology.

## Data availability

Related data are contained in the ESI.<sup>†</sup>

## Author contributions

Conceptualization – ORB, VW; investigation – MAR, ORB; data curation – MAR, ORB, UES, VW; formal analysis – UES; funding acquisition – VW; supervision – VW; writing, original draft – MAR, VW; writing, review & editing – MAR, ORB, UES, VW.

## Conflicts of interest

There are no conflicts to declare.

## Acknowledgements

This work was supported by the Ministerium für Wissenschaft, Forschung und Kunst Baden-Württemberg (33-7533-7-11.9/7/2). We thank Anke Friemel and Ulrich Haunz from the NMR Core Facility of the University of Konstanz for their help in recording reaction kinetics and the Proteomics Center for MS analysis of glycan conjugates.

## References

- Essentials of Glycobiology*, ed. A. Varki, R. D. Cummings, J. D. Esko, P. Stanley, G. W. Hart, M. Aebi, A. G. Darvill, T. Kinoshita, N. H. Packer, J. H. Prestegard, R. L. Schnaar and P. H. Seeberger, Cold Spring Harbor Laboratory Press, Cold Spring Harbor, NY, 2015–2017.
- (a) K. K. Palaniappan and C. R. Bertozzi, *Chem. Rev.*, 2016, **116**, 14277–14306; (b) L.-X. Wang and B. G. Davis, *Chem. Sci.*, 2013, **4**, 3381–3394.
- (a) K. Villadsen, M. C. Martos-Maldonado, K. J. Jensen and M. B. Thygesen, *ChemBioChem*, 2017, **18**, 574–612; (b) L. R. Ruhaak, G. Zauner, C. Huhn, C. Bruggink, A. M. Deelder and M. Wuhrer, *Anal. Bioanal. Chem.*, 2010, **397**, 3457–3481.
- (a) Y. Liu, T. Feizi, M. A. Campanero-Rhodes, R. A. Childs, Y. Zhang, B. Mulloy, P. G. Evans, H. M. I. Osborn, D. Otto, P. R. Crocker and W. Chai, *Chem. Biol.*, 2007, **14**, 847–859; (b) S. Park, M.-R. Lee and I. Shin, *Bioconjugate Chem.*, 2009, **20**, 155–162; (c) S. Park, J. C. Gildersleeve, O. Blixt and I. Shin, *Chem. Soc. Rev.*, 2013, **42**, 4310–4326.
- M. B. Thygesen, J. Sauer and K. J. Jensen, *Chem.–Eur. J.*, 2009, **15**, 1649–1660.
- X.-P. He, Y.-L. Zeng, X.-Y. Tang, N. Li, D.-M. Zhou, G.-R. Chen and H. Tian, *Angew. Chem., Int. Ed.*, 2016, **55**, 13995–13999.
- (a) S. E. Cervigni, P. Dumy and M. Mutter, *Angew. Chem., Int. Ed. Engl.*, 1996, **35**, 1230–1232; (b) Y. Zhao, S. B. H. Kent and B. T. Chait, *Proc. Natl. Acad. Sci. U. S. A.*, 1997, **94**, 1629–1633; (c) S. Peluso and B. Imperiali, *Tetrahedron Lett.*, 2001, **42**, 2085–2087; (d) D. Specker and V. Wittmann, *Top. Curr. Chem.*, 2007, **267**, 65–107.

- 8 S. Dall'Angelo, Q. Zhang, I. N. Fleming, M. Piras, L. F. Schweiger, D. O'Hagan and M. Zanda, *Org. Biomol. Chem.*, 2013, **11**, 4551–4558.
- 9 (a) R. Novoa-Carballal and A. H. E. Müller, *Chem. Commun.*, 2012, **48**, 3781–3783; (b) I. Vikøren Mo, Y. Feng, M. Øksnes Dalheim, A. Solberg, F. L. Aachmann, C. Schatz and B. E. Christensen, *Carbohydr. Polym.*, 2020, **232**, 115748.
- 10 A. Lohse, R. Martins, M. R. Jørgensen and O. Hindsgaul, *Angew. Chem., Int. Ed.*, 2006, **45**, 4167–4172.
- 11 D. K. Kölmel and E. T. Kool, *Chem. Rev.*, 2017, **117**, 10358–10376.
- 12 W. P. Jencks, *Prog. Phys. Org. Chem.*, 1964, **2**, 63–128.
- 13 A. Dirksen, T. M. Hackeng and P. E. Dawson, *Angew. Chem., Int. Ed.*, 2006, **45**, 7581–7584.
- 14 M. B. Thygesen, H. Munch, J. Sauer, E. Cló, M. R. Jørgensen, O. Hindsgaul and K. J. Jensen, *J. Org. Chem.*, 2010, **75**, 1752–1755.
- 15 M. Østergaard, N. J. Christensen, C. T. Hjuler, K. J. Jensen and M. B. Thygesen, *Bioconjugate Chem.*, 2018, **29**, 1219–1230.
- 16 L. H. Yuen, N. S. Saxena, H. S. Park, K. Weinberg and E. T. Kool, *ACS Chem. Biol.*, 2016, **11**, 2312–2319.
- 17 A. L. Tarentino, C. M. Gomez and T. H. Plummer, *Biochemistry*, 1985, **24**, 4665–4671.
- 18 G. Legler, *Biochim. Biophys. Acta*, 1978, **524**, 94–101.
- 19 (a) H. S. Isbell and H. L. Frush, *Methods Carbohydr. Chem.*, 1980, **8**, 255–259; (b) J. R. Rasmussen, J. Davis, J. M. Risley and R. L. Van Etten, *J. Am. Chem. Soc.*, 1992, **114**, 1124–1126.
- 20 T. Tanaka, H. Nagai, M. Noguchi, A. Kobayashi and S.-i. Shoda, *Chem. Commun.*, 2009, 3378–3379.
- 21 O. R. Baudendistel, D. E. Wieland, M. S. Schmidt and V. Wittmann, *Chem.–Eur. J.*, 2016, **22**, 17359–17365.
- 22 Y. Kawaharada, S. Kelly, M. Wibroe Nielsen, C. T. Hjuler, K. Gysel, A. Muszynski, R. W. Carlson, M. B. Thygesen, N. Sandal, M. H. Asmussen, M. Vinther, S. U. Andersen, L. Krusell, S. Thirup, K. J. Jensen, C. W. Ronson, M. Blaise, S. Radutoiu and J. Stougaard, *Nature*, 2015, **523**, 308–312.
- 23 Using an excess of ethoxyamine or an aminoxy-functionalized linker does not represent an experimental disadvantage because it can be easily removed after ligation either by evaporation or extraction or with an aldehyde-functionalized scavenger resin as shown below.
- 24 (a) N. Kawasaki, M. Ohta, S. Hyuga, O. Hashimoto and T. Hayakawa, *Anal. Biochem.*, 1999, **269**, 297–303; (b) J. M. Prien, D. J. Ashline, A. J. Lapadula, H. Zhang and V. N. Reinhold, *J. Am. Soc. Mass Spectrom.*, 2009, **20**, 539–556.