



Cochrane
Library

Cochrane Database of Systematic Reviews

Directly observed therapy for treating tuberculosis (Review)

Karumbi J, Garner P

Karumbi J, Garner P.
Directly observed therapy for treating tuberculosis.
Cochrane Database of Systematic Reviews 2015, Issue 5. Art. No.: CD003343.
DOI: [10.1002/14651858.CD003343.pub4](https://doi.org/10.1002/14651858.CD003343.pub4).

www.cochranelibrary.com

Directly observed therapy for treating tuberculosis (Review)

Copyright © 2015 The Authors. Cochrane Database of Systematic Reviews published by John Wiley & Sons, Ltd. on behalf of The Cochrane Collaboration.

WILEY

TABLE OF CONTENTS

HEADER	1
ABSTRACT	1
PLAIN LANGUAGE SUMMARY	2
SUMMARY OF FINDINGS	4
BACKGROUND	8
Figure 1.	9
OBJECTIVES	10
METHODS	10
RESULTS	11
Figure 2.	12
Figure 3.	13
DISCUSSION	14
AUTHORS' CONCLUSIONS	15
ACKNOWLEDGEMENTS	15
REFERENCES	16
CHARACTERISTICS OF STUDIES	19
DATA AND ANALYSES	32
Analysis 1.1. Comparison 1 Directly observed versus self-administered, Outcome 1 Cure (negative sputum smear in last month of Rx in patients +ve initially).	33
Analysis 1.2. Comparison 1 Directly observed versus self-administered, Outcome 2 Cure (by intensity of monitoring in control group).	33
Analysis 1.3. Comparison 1 Directly observed versus self-administered, Outcome 3 Treatment completion (both with smear sputum test at end and those without).	34
Analysis 1.4. Comparison 1 Directly observed versus self-administered, Outcome 4 Treatment completion (grouped by frequency of monitoring in the self-administered therapy group).	34
Analysis 2.1. Comparison 2 Home observed versus clinic observed, Outcome 1 Cure (having a negative sputum smear test in the last month of treatment having been smear-positive initially).	36
Analysis 2.2. Comparison 2 Home observed versus clinic observed, Outcome 2 Treatment completion (both with smear sputum test at end and those without).	36
Analysis 2.3. Comparison 2 Home observed versus clinic observed, Outcome 3 Cure (stratified by intensity of observation). ...	36
Analysis 3.1. Comparison 3 Community observed vs family observed, Outcome 1 Cure (having a negative sputum smear test in the last month of treatment having been smear-positive initially).	37
Analysis 3.2. Comparison 3 Community observed vs family observed, Outcome 2 Treatment completion (both with smear sputum test at end and those without).	37
Analysis 4.1. Comparison 4 Injecting drug users, Outcome 1 Treatment completion.	38
ADDITIONAL TABLES	38
APPENDICES	42
WHAT'S NEW	42
HISTORY	43
CONTRIBUTIONS OF AUTHORS	43
DECLARATIONS OF INTEREST	44
SOURCES OF SUPPORT	44
INDEX TERMS	44

[Intervention Review]

Directly observed therapy for treating tuberculosis

Jamlick Karumbi¹, Paul Garner²

¹SIRCLE collaboration, KEMRI-wellcome Trust Research Programme, Nairobi, Kenya. ²Department of Clinical Sciences, Liverpool School of Tropical Medicine, Liverpool, UK

Contact address: Jamlick Karumbi, SIRCLE collaboration, KEMRI-wellcome Trust Research Programme, Kenyatta National Hospital Grounds, P.O. Box 43640 ? 00100, Nairobi, Kenya. jkarumbi@nairobi.kemri-wellcome.org.

Editorial group: Cochrane Infectious Diseases Group.

Publication status and date: Unchanged, published in Issue 5, 2015.

Citation: Karumbi J, Garner P. Directly observed therapy for treating tuberculosis. *Cochrane Database of Systematic Reviews* 2015, Issue 5. Art. No.: CD003343. DOI: [10.1002/14651858.CD003343.pub4](https://doi.org/10.1002/14651858.CD003343.pub4).

Copyright © 2015 The Authors. Cochrane Database of Systematic Reviews published by John Wiley & Sons, Ltd. on behalf of The Cochrane Collaboration. This is an open access article under the terms of the [Creative Commons Attribution-Non-Commercial](https://creativecommons.org/licenses/by-nc/4.0/) Licence, which permits use, distribution and reproduction in any medium, provided the original work is properly cited and is not used for commercial purposes.

ABSTRACT

Background

Tuberculosis (TB) requires at least six months of treatment. If treatment is incomplete, patients may not be cured and drug resistance may develop. Directly Observed Therapy (DOT) is a specific strategy, endorsed by the World Health Organization, to improve adherence by requiring health workers, community volunteers or family members to observe and record patients taking each dose.

Objectives

To evaluate DOT compared to self-administered therapy in people on treatment for active TB or on prophylaxis to prevent active disease. We also compared the effects of different forms of DOT.

Search methods

We searched the following databases up to 13 January 2015: the Cochrane Infectious Diseases Group Specialized Register; the Cochrane Central Register of Controlled Trials (CENTRAL), published in the Cochrane Library; MEDLINE; EMBASE; LILACS and *m*RCT. We also checked article reference lists and contacted relevant researchers and organizations.

Selection criteria

Randomized controlled trials (RCTs) and quasi-RCTs comparing DOT with routine self-administration of treatment or prophylaxis at home.

Data collection and analysis

Two review authors independently assessed risk of bias of each included trial and extracted data. We compared interventions using risk ratios (RR) with 95% confidence intervals (CI). We used a random-effects model if meta-analysis was appropriate but heterogeneity present (I^2 statistic > 50%). We assessed the quality of the evidence using the GRADE approach.

Main results

Eleven trials including 5662 participants met the inclusion criteria. DOT was performed by a range of people (nurses, community health workers, family members or former TB patients) in a variety of settings (clinic, the patient's home or the home of a community volunteer).

DOT versus self-administered

Directly observed therapy for treating tuberculosis (Review)

Copyright © 2015 The Authors. Cochrane Database of Systematic Reviews published by John Wiley & Sons, Ltd. on behalf of The Cochrane Collaboration.

Six trials from South Africa, Thailand, Taiwan, Pakistan and Australia compared DOT with self-administered therapy for treatment. Trials included DOT at home by family members, community health workers (who were usually supervised); DOT at home by health staff; and DOT at health facilities. TB cure was low with self-administration across all studies (range 41% to 67%), and direct observation did not substantially improve this (RR 1.08, 95% CI 0.91 to 1.27; five trials, 1645 participants, *moderate quality evidence*). In a subgroup analysis stratified by the frequency of contact between health services in the self-treatment arm, daily DOT may improve TB cure when compared to self-administered treatment where patients in the self-administered group only visited the clinic every month (RR 1.15, 95% CI 1.06 to 1.25; two trials, 900 participants); but with contact in the control becoming more frequent, this small effect was not apparent (every two weeks: RR 0.96, 95% CI 0.83 to 1.12; one trial, 497 participants; every week: RR 0.90, 95% CI 0.68 to 1.21; two trials, 248 participants).

Treatment completion showed a similar pattern, ranging from 59% to 78% in the self-treatment groups, and direct observation did not improve this (RR 1.07, 95% CI 0.96 to 1.19; six trials, 1839 participants, *moderate quality evidence*).

DOT at home versus DOT at health facility

In four trials that compared DOT at home by family members, or community health workers, with DOT by health workers at a health facility there was little or no difference in cure or treatment completion (cure: RR 1.02, 95% CI 0.88 to 1.18, four trials, 1556 participants, *moderate quality evidence*; treatment completion: RR 1.04, 95% CI 0.91 to 1.17, three trials, 1029 participants, *moderate quality evidence*).

DOT by family member versus DOT by community health worker

Two trials compared DOT at home by family members with DOT at home by community health workers. There was also little or no difference in cure or treatment completion (cure: RR 1.02, 95% CI 0.86 to 1.21; two trials, 1493 participants, *moderate quality evidence*; completion: RR 1.05, 95% CI 0.90 to 1.22; two trials, 1493 participants, *low quality evidence*).

Specific patient categories

A trial of 300 intravenous drug users in the USA evaluated direct observation with no observation in TB prophylaxis to prevent active disease and showed little difference in treatment completion (RR 1.00, 95% CI 0.88 to 1.13; one trial, 300 participants, *low quality evidence*).

Authors' conclusions

From the existing trials, DOT did not provide a solution to poor adherence in TB treatment. Given the large resource and cost implications of DOT, policy makers might want to reconsider strategies that depend on direct observation. Other options might take into account financial and logistical barriers to care; approaches that motivate patients and staff; and defaulter follow-up.

15 April 2019

Update pending

Studies awaiting assessment

The CIDG is currently examining a search conducted up to 5 Jul, 2018 for potentially relevant studies. These studies have not yet been incorporated into this Cochrane Review.

PLAIN LANGUAGE SUMMARY

Directly observing people with TB take their drugs to help them complete their treatment

This Cochrane Review summarises trials evaluating the effects of directly observed therapy (DOT) for treating people with tuberculosis (TB) or people on prophylaxis to prevent active disease compared to self-administered treatment. After searching for relevant trials up to 13 January 2015, we included 11 randomized controlled trials, enrolling 5662 people with TB, and conducted between 1995 and 2008.

What is DOT and how might it improve treatment outcomes for people with TB

DOT is one strategy to ensure that patients with TB take all their medication. An 'observer' acceptable to the patient and the health system observes the patient taking every dose of their medication, and records this for the health system to monitor.

The World Health Organization currently recommends that people with TB are treated for at least six months to achieve cure. These long durations of treatment can be difficult for patients to complete, especially once they are well and need to return to work. Failure to complete treatment can lead to relapse and even death in individuals, and also has important public health consequences, such as increased TB transmission and the development of drug resistance.

What the research says

Overall, cure and treatment completion in both self-treatment and DOT groups was low, and DOT did not substantially improve this. Small effects were seen in a subgroup of studies where the self-treatment group were monitored less frequently than the DOT group.

Directly observed therapy for treating tuberculosis (Review)

Copyright © 2015 The Authors. Cochrane Database of Systematic Reviews published by John Wiley & Sons, Ltd. on behalf of The Cochrane Collaboration.

There is probably no difference in TB cure or treatment completion when the direct observation was conducted at home or at the clinic (*moderate quality evidence*). There is probably little or no difference in TB cure direct observation is conducted by a community health worker or family member (*moderate quality evidence*) and there may be little or no difference in treatment completion either (*low quality evidence*).

Direct observation may have little or no effect on treatment completion in injection drug users (*low quality evidence*).

The authors conclude that DOT on its own may not offer the solution to poor adherence in people taking TB medication.

SUMMARY OF FINDINGS

Summary of findings for the main comparison. Directly observed therapy (DOT) versus self-administered TB treatment

Directly observed therapy (DOT) versus self-administered TB treatment

Patient or population: Patients on TB treatment
Settings: Low-, middle- or high-income countries
Intervention: DOT
Comparison: Self-administered therapy

Outcomes	Illustrative comparative risks* (95% CI)		Relative effect (95% CI)	No of participants (trials)	Quality of the evidence (GRADE)
	Assumed risk	Corresponding risk			
	Self-administered therapy	DOT			
Cure Follow-up: up to 6 months	617 per 1000	666 per 1000 (561 to 784)	RR 1.08 (0.91 to 1.27)	1645 (5 trials)	⊕⊕⊕○ moderate 1,2,3,4
Treatment completion Follow-up: 2 to 8 months ⁵	709 per 1000	751 per 1000 (680 to 829)	RR 1.07 (0.96 to 1.19)	1839 (6 trials)	⊕⊕⊕○ moderate 1,2,3,4

The basis for the **assumed risk** is the median control group risk across studies. The **corresponding risk** (and its 95% CI) is based on the assumed risk in the comparison group and the **relative effect** of the intervention (and its 95% CI).

CI: confidence interval; **RR:** risk ratio; **DOT:** directly observed therapy; **TB:** tuberculosis.

GRADE Working Group grades of evidence

High quality: Further research is very unlikely to change our confidence in the estimate of effect.

Moderate quality: Further research is likely to have an important impact on our confidence in the estimate of effect and may change the estimate.

Low quality: Further research is very likely to have an important impact on our confidence in the estimate of effect and is likely to change the estimate.

Very low quality: We are very uncertain about the estimate.

¹No serious risk of bias: three trials adequately described allocation concealment. Exclusion of trials at unclear or high risk of bias did not substantially change the result.

²Downgraded by 1 for inconsistency: trials include qualitative differences in effect size and direction. The benefit reached standard levels of statistical significance in the two trials where those receiving self-administered therapy had less frequent contact with health services compared to the directly observed group, so any effect probably due to confounding.

³No serious indirectness: The trials were conducted in low-, middle- and high-income countries between 1995 and 2008.

⁴No serious imprecision: The analysis is adequately powered to detect clinically important differences between treatment arms.

⁵Some trials checked for completion of intensive phase treatment and others the completion of the whole therapy, hence the 2 to 8 months.

Summary of findings 2. Home DOT versus clinic DOT

Home DOT versus clinic DOT

Patient or population: Patients with TB treatment

Settings: Low-, middle- or high-income countries

Intervention: Home observation

Comparison: Clinic observation

Outcomes	Illustrative comparative risks* (95% CI)		Relative effect (95% CI)	No of participants (trials)	Quality of the evidence (GRADE)
	Assumed risk	Corresponding risk			
	Clinic observation	Home observation			
Cure Follow-up: up to 6 months	492 per 1000	502 per 1000 (433 to 580)	RR 1.02 (0.88 to 1.18)	1556 (4 trials)	⊕⊕⊕⊖ moderate 1,2,3
Treatment completion ⁴ Follow-up: 2 to 6 months	751 per 1000	781 per 1000 (684 to 879)	RR 1.04 (0.91 to 1.17)	1029 (3 trials)	⊕⊕⊕⊖ moderate 1,2,3

The basis for the **assumed risk** is the median control group risk across studies. The **corresponding risk** (and its 95% CI) is based on the assumed risk in the comparison group and the **relative effect** of the intervention (and its 95% CI).

CI: confidence interval; **RR:** risk ratio; **DOT:** directly observed therapy; **TB:** tuberculosis.

GRADE Working Group grades of evidence

High quality: Further research is very unlikely to change our confidence in the estimate of effect.

Moderate quality: Further research is likely to have an important impact on our confidence in the estimate of effect and may change the estimate.

Low quality: Further research is very likely to have an important impact on our confidence in the estimate of effect and is likely to change the estimate.

Very low quality: We are very uncertain about the estimate.

¹Downgraded by 1 for risk of bias: selection bias is probable in one trial, [Wandwalo 2004 TZA](#), as there was no blinding and no allocation concealment. In [Lwilla 2003 TZA](#), sequence generation and allocation concealment were unclear and there was no blinding. This could bias the measurement of treatment completion.

²No serious indirectness: The trials were conducted in low-, middle- and high-income countries between 1995 and 2008.

³No serious imprecision: The analysis is adequately powered to detect clinically important differences between treatment arms.

⁴Some trials checked for completion of intensive phase treatment and others the completion of the whole therapy, hence the 2 to 6 months.

Summary of findings 3. Summary of findings table 3

Community DOT versus family DOT

Patient or population: Patients on TB treatment

Settings: Low-, middle- or high-income countries
Intervention: Community DOT
Comparison: Family DOT

Outcomes	Illustrative comparative risks* (95% CI)		Relative effect (95% CI)	No of participants (trials)	Quality of the evidence (GRADE)
	Assumed risk	Corresponding risk			
	Family DOT	Community DOT			
Cure Follow-up: up to 6 months	766 per 1000	781 per 1000 (659 to 927)	RR 1.02 (0.86 to 1.21)	1493 (2 trials)	⊕⊕⊕⊖ moderate ¹
Treatment completion Follow-up: 2 to 6 months	827 per 1000	869 per 1000 (744 to 1000)	RR 1.05 (0.90 to 1.22)	1493 (2 trials)	⊕⊕⊖⊖ low ^{1,2}

*The basis for the **assumed risk** (eg the median control group risk across studies) is provided in footnotes. The **corresponding risk** (and its 95% confidence interval) is based on the assumed risk in the comparison group and the **relative effect** of the intervention (and its 95% CI).
CI: confidence interval; **RR:** risk ratio; **DOT:** directly observed therapy; **TB:** tuberculosis.

GRADE Working Group grades of evidence

High quality: Further research is very unlikely to change our confidence in the estimate of effect.

Moderate quality: Further research is likely to have an important impact on our confidence in the estimate of effect and may change the estimate.

Low quality: Further research is very likely to have an important impact on our confidence in the estimate of effect and is likely to change the estimate.

Very low quality: We are very uncertain about the estimate.

¹Downgraded by 1 for risk of bias. Both trials had unclear random sequence generation and recruitment bias could not be ruled out for [Newell 2006 NPL](#).

²Downgraded by 1 for risk of bias for the outcome of treatment completion as there was no allocation concealment and selective reporting could not be ruled out in [Wright 2004 SWZ](#).

Summary of findings 4. DOT versus self-administered therapy for intravenous drug users

DOT versus self-administered therapy for intravenous drug users

Patient or population: Patients on TB treatment

Settings: Low-, middle- or high-income countries

Intervention: DOT

Comparison: Self-administered treatment

Outcomes	Illustrative comparative risks* (95% CI)	Relative effect (95% CI)	No of participants (trials)	Quality of the evidence (GRADE)
----------	--	--------------------------	-----------------------------	---------------------------------

	Assumed risk	Corresponding risk			
	Self-administered therapy	DOT			
Treatment completion Follow-up for 6 months	79 per 100	79 per 1000 (70 to 89)	RR 1.00 (0.88 to 1.13)	300 (1 trial)	⊕⊕⊕⊕ low 1,2,3

*The basis for the **assumed risk** (eg the median control group risk across studies) is provided in footnotes. The **corresponding risk** (and its 95% confidence interval) is based on the assumed risk in the comparison group and the **relative effect** of the intervention (and its 95% CI).

CI: confidence interval; **RR:** risk ratio; **DOT:** directly observed therapy; **TB:** tuberculosis.

GRADE Working Group grades of evidence

High quality: Further research is very unlikely to change our confidence in the estimate of effect.

Moderate quality: Further research is likely to have an important impact on our confidence in the estimate of effect and may change the estimate.

Low quality: Further research is very likely to have an important impact on our confidence in the estimate of effect and is likely to change the estimate.

Very low quality: We are very uncertain about the estimate.

¹Downgraded by 1 for risk of bias. There was no blinding of outcome assessment and allocation concealment was unclear and treatment completion can be a bit subjective hence the results might be biased. The level of completeness to follow-up was 88%.

²Downgraded by 1 for indirectness. The self-administered group had a 10 dollar stipend which is may have enhanced adherence in this group.

³There may have been some imprecision. The study was had a small sample size and may have been underpowered to detect clinically important differences.

BACKGROUND

Description of the condition

Tuberculosis (TB) remains a leading cause of death in low- and middle-income countries despite the availability of effective treatments. In 2012, the World Health Organization (WHO) estimated that there were 8.6 million people infected with TB, of whom 1.3 million died (WHO 2013). Most people infected with *Mycobacterium tuberculosis* develop 'latent TB', where the bacteria are contained by the person's immune system and they do not develop symptoms. The risk of progression to active TB and development of symptoms is about 10% over the course of a lifetime (Frieden 2003), but co-infection with human immune deficiency virus (HIV) increases this risk to about 10% per year (Sepkowitz 1995).

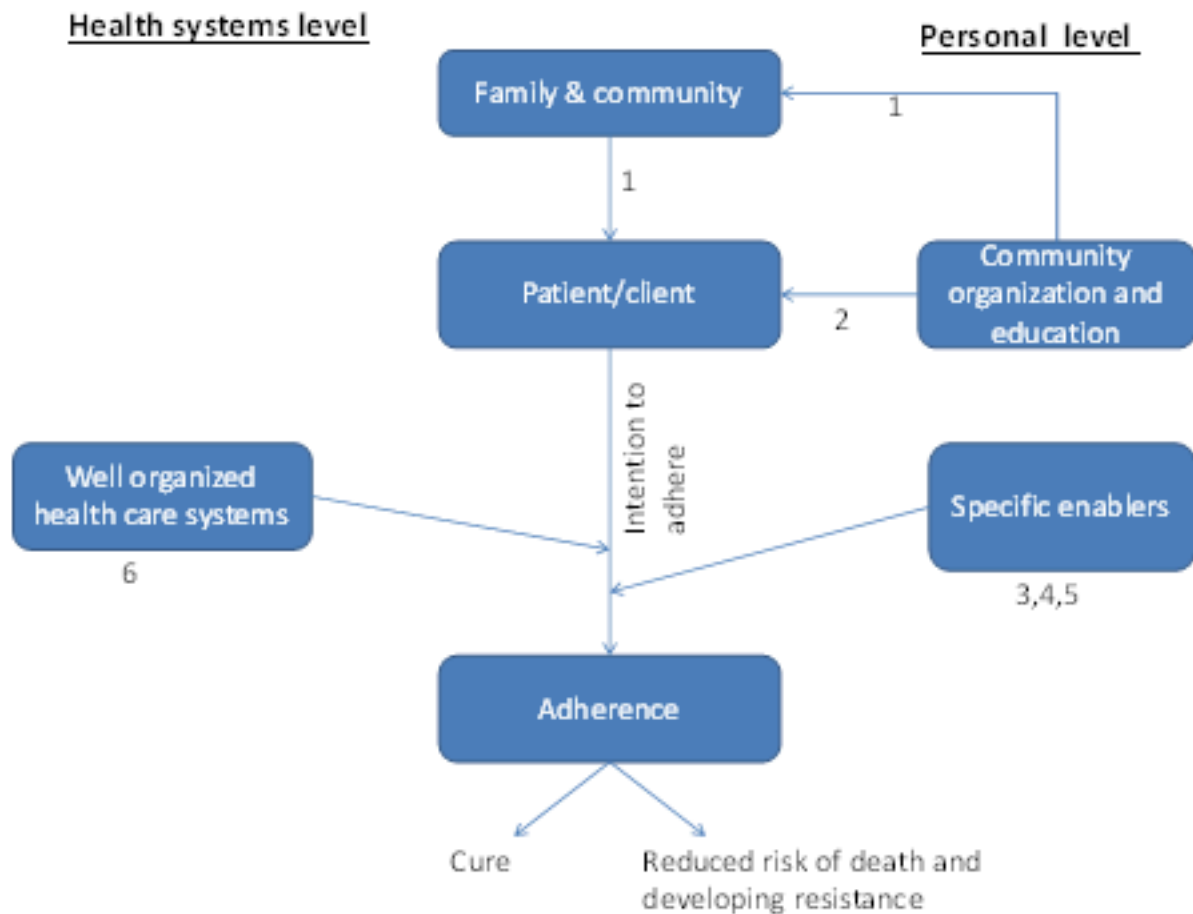
The WHO currently recommends at least six months of treatment for active disease, and 12 months for latent TB (Smieja 2010; WHO 2010). These long durations of treatment can be difficult for patients to adhere to, especially once they are well and need to return to work. Poor adherence can lead to relapse and even death in individuals, and also has important public health consequences, such as increased transmission and the development of drug resistance (Hirpa 2013; Moonan 2011).

Munro 2007 synthesized evidence from qualitative studies among patients and health workers and identified eight factors that influence adherence:

1. Organization of treatment and care for TB patients.
2. Interpretation of illness and wellness by the patient.
3. Financial cost.
4. Patient knowledge, attitudes and beliefs about treatment.
5. Law and immigration status.
6. Gender and substance abuse.
7. Drug side effects.
8. Influence of the family, community and peers.

We adapted an existing conceptual framework by van den Boogaard 2012 to develop a model for understanding approaches to improving adherence (Figure 1). There are health system level barriers (staff, inconvenient location, expensive and a poorly organized healthcare system) and personal level barriers (stigmatisation, poverty, competing demands and health beliefs) to adherence and the patient has to work through these barriers in order to be adherent. Healthcare workers have devised several strategies targeted at some of the key barriers to improve adherence, some of which are addressed by Cochrane Reviews:

Figure 1. Factors influencing adherence and possible intervention points.



1. Encouraging family and social support engagement
2. Patient education and counseling
3. Reimbursements for time and money (facilitation of transport)
4. Direct observation of treatment
5. Prompts and reminders
6. Staff supervision and motivation

- Reminder systems and late patient tracers in the diagnosis and management of TB (Liu 2008).
- Patient education and counselling for promoting adherence to treatment for TB (M'Imunya 2012).
- Material incentives and enablers in the management of TB (Lutge 2012).
- Contracts: written or verbal agreements to return for an appointment or course of treatment (Bosch-Capblanch 2007).

Description of the intervention

'Directly observed therapy' (DOT) is one component of a wider WHO strategy called 'Directly Observed Therapy Short course' (DOTS). This strategy incorporates wide ranging health system improvements, political commitment to improving TB

programmes, improved TB laboratory services, free TB drugs for all TB patients, and accurate documentation and monitoring of TB diagnosis and treatment outcomes (WHO 2002). The DOT component is an attempt to improve adherence by active monitoring and recording of the consumption of each and every drug dose by an 'observer' acceptable to the patient and the health system (Hopewell 2006). This approach was first adopted in studies in Madras, India and Hong Kong as early as the 1960s (Bayer 1995), and is now considered a core component of TB programmes by the WHO to ensure cure and prevent the emergence of drug resistance (Chien 2013; Hirpa 2013). Proponents of DOT argue that the close monitoring has a social effect and acts as a peer pressure which leads to behavior change towards improved adherence (Macq 2003) and it has strong proponents (Chaulk 1998; Frieden 2007). However, to opponents it has been seen as a coercive model which leaves the

Directly observed therapy for treating tuberculosis (Review)

patient as a passive recipient of therapy thereby eroding the gains made in involving patients in management of their own health (Zwarenstein 1998 ZAF).

The initial Cochrane Review (Volmink 1997) and subsequent updates (Volmink 2000a; Volmink 2001; Volmink 2003; Volmink 2006; Volmink 2007) challenged the dogma that DOT improved cure and thus helped prevent drug resistance developing. The debate has continued, with some even advocating for a shift of resources away from DOT programmes (Barbara 2013; Gross 2009; Moonan 2011; Pasipanodya 2013). There are also debates as to the best delivery of DOT, for example, should it be through healthcare workers or family members (Anuwatnonthakate 2008; Dick 2005).

Why it is important to do this review

Full implementation of DOT requires considerable resources. For example, in Pakistan it has been shown that direct observation at a health facility costs two times more than self-supervision (USD310 versus USD164). Therefore, it is important to evaluate the effects in order to inform decisions about whether the benefits are worth investing in (Khan 2003). This Cochrane Review is an update of Volmink 2007.

OBJECTIVES

To evaluate DOT compared to self-administered therapy in people on treatment for active TB or on prophylaxis to prevent active disease. We also compare the effects of different forms of DOT.

METHODS

Criteria for considering studies for this review

Types of studies

Individually randomized controlled trials (RCTs) or cluster-RCTs. We also included quasi-RCTs.

Types of participants

People on treatment for active TB or receiving prophylaxis to prevent the development of active TB disease.

Types of interventions

Intervention

DOT where a health worker, community volunteer or family member, routinely observes participants taking their antituberculous drugs.

Control

Self-administered therapy or an alternative form of DOT.

Types of outcome measures

Primary

- Cure (having a negative sputum smear test in the last month of treatment having been smear-positive initially).
- Treatment completion.
- Development of clinical TB (in trials of drug prophylaxis).

Secondary

- Proportion of outpatient appointments attended.

Search methods for identification of studies

We attempted to identify all relevant trials regardless of language or publication status (published, unpublished, in press and in progress).

Databases

We searched the following databases using the search terms and strategy described in Appendix 1: Cochrane Infectious Diseases Group (CIDG) Specialized Register (13 January 2015); the Cochrane Central Register of Controlled Trials (CENTRAL), published in the Cochrane Library; MEDLINE (1966 to 13 January 2015); EMBASE (1974 to 13 January 2015); and LILACS (1982 to 13 January 2015). We also searched the *metaRegister* of Controlled Trials (*mRCT*) using 'tuberculosis AND DOT*' (13 January 2015).

Researchers and organizations

For unpublished and ongoing trials, we contacted individual researchers working in the field and the following organizations: WHO, the International Union Against Tuberculosis and Lung Disease, and the Centers for Disease Control and Prevention (CDC).

Reference lists

We also checked the reference lists of all studies identified by the above methods.

Data collection and analysis

Selection of studies

We independently applied the inclusion criteria to all identified trials. We used the titles and abstracts of the identified citations to exclude trials that clearly did not meet the inclusion criteria. If either review author judged that the trial might be eligible for inclusion, we obtained the full text article. We independently screened the full text articles of selected trials to confirm eligibility and resolved any disagreements by discussion.

Data extraction and management

We independently extracted the data and checked whether trial authors had conducted an intention-to-treat analysis. We contacted trial authors to obtain missing information and to clarify issues. We resolved discrepancies through discussion. For the outcomes, we extracted the number of participants experiencing the event.

Assessment of risk of bias in included studies

We independently evaluated the methodological quality of each trial, classifying the generation of allocation sequence and concealment of allocation as either adequate, inadequate or unclear, according to Jüni 2001. We classified blinding as adequate if the trial authors took steps to ensure the people recording the main outcome of the trial were blinded to the assigned interventions, and inadequate if this was not the case or if there was no mention of attempts to blind the observers. We assessed completeness of follow-up as adequate if 90% or more of the enrolled participants had outcome data reported, inadequate if less than 90% of the participants had outcome data reported, or unclear if not mentioned in the trial.

Measures of treatment effect

For dichotomous outcomes, we calculated the results using the risk ratio (RR). We presented the effect estimates with 95% confidence intervals (CIs).

Assessment of heterogeneity

We looked for statistical heterogeneity by inspecting the forest plots for overlapping CIs, applying the Chi² test (P value < 0.10 considered statistically significant) and the I² statistic (I² value of 50% used to denote moderate levels of heterogeneity). We assessed whether a difference in the intensity of supervision between the intervention and control group could explain heterogeneity.

Data synthesis

We used *Review Manager 5* to analyse the data, using risk ratio (RR) with 95% CIs to assess estimates of effect. We used the fixed-effect model when there was no statistically significant heterogeneity (Chi² test, P > 0.1) and a random-effects model when heterogeneity was present (I² statistic > 50). We assessed the quality of the evidence using the GRADE approach.

RESULTS

Description of studies

Eleven trials, enrolling 5662 participants, met the inclusion criteria (see 'Characteristics of included studies'), and we excluded 13 studies for the reasons listed in the 'Characteristics of excluded studies' table.

Nine included trials were individually RCTs, and two were cluster-RCTs (*Lwilla 2003 TZA*; *Newell 2006 NPL*). One trial used a quasi-random method of allocation (*MacIntyre 2003 AUS*).

Three trials were conducted in low-income countries (Tanzania: *Lwilla 2003 TZA*; *Wandwalo 2004 TZA*; Nepal: *Newell 2006 NPL*); six in middle-income countries (Taiwan: *Hsieh 2008 TWN*; Pakistan: *Walley 2001 PAK*; Thailand: *Kamolratanakul 1999 THA*; South Africa: *Zwarenstein 1998 ZAF*; *Zwarenstein 2000 ZAF*; and Swaziland: *Wright 2004 SWZ*); and two were from high-income countries (Australia: *MacIntyre 2003 AUS*; USA: *Chaisson 2001 USA*).

Populations targeted

Ten trials evaluated DOT in people on treatment for active TB, and one evaluated directly observed prophylaxis in intravenous drug users (see [Table 1](#); [Table 2](#); [Table 3](#)).

Six trials compared DOT with self-administered therapy:

- *Zwarenstein 1998 ZAF* included two arms in two locations (Elsies River and Khayelitsha); *Zwarenstein 2000 ZAF* was the same trial containing data from one of these two locations, and had an additional arm (lay health worker administered DOT). The control arms (self-administered treatment) were therefore the same for Elsie's River in both trials, and so in the meta-analysis we adjusted the data to ensure they were not counted twice.

- *Kamolratanakul 1999 THA* allowed participants to choose between DOT by a health worker, community leader or family member; 85% chose the latter.
- *Walley 2001 PAK* compared DOT by a health worker or community health worker with DOT by a family member and with self-administration of treatment.
- *MacIntyre 2003 AUS* evaluated DOT by a family member compared to self-administration.
- *Hsieh 2008 TWN* had DOT by case managers; there were three arms; weekly observation, monthly observation and the control group was patients admitted to hospital (Inpatient care).

Four trials compared different forms of DOT:

- *Newell 2006 NPL* compared community health worker observation to family member observation.
- *Wandwalo 2004 TZA* trials compared DOT by a family member with either DOT by a health worker at a health facility or DOT by a community health worker.
- *Wright 2004 SWZ* compared community health worker observation to family member observation coupled with a once per week visit by a community health worker.
- *Lwilla 2003 TZA* compared a community health worker DOT at home to DOT at a health facility.

One trial evaluated DOT in injecting (intravenous) drug users in the USA:

- *Chaisson 2001 USA* involved intravenous drug users, and studied DOT by an outreach nurse with self-administration either with monthly peer support or monthly clinic visits.

Intensity of supervision

Intensity of supervision varied in the included trials. For the six RCTs of DOT compared to self-administered treatment, three trials appeared to be a direct comparison of healthcare worker administered DOT versus self-administered. Another three trials appeared to have more intense supervision in the DOT arm only, with health workers visiting patients at home every two weeks. In *Kamolratanakul 1999 THA*, community health workers and family members received additional supervision by health centre staff once every two weeks. In *MacIntyre 2003 AUS*, nurses had weekly calls to the patients who were observed by family members. In *Hsieh 2008 TWN* the case manager visited the patients in the intervention arm and was supervised by weekly unscheduled supervision. In the control group of these trials no such intensive supervision was described.

Adjustment for clustering

Both cluster-RCTs adjusted for clustering appropriately: standard error of the coefficients for clustering on units corrected using the Huber-White-Sandwich method (*Lwilla 2003 TZA*); and, in *Newell 2006 NPL*, using the coefficient of variation between clusters.

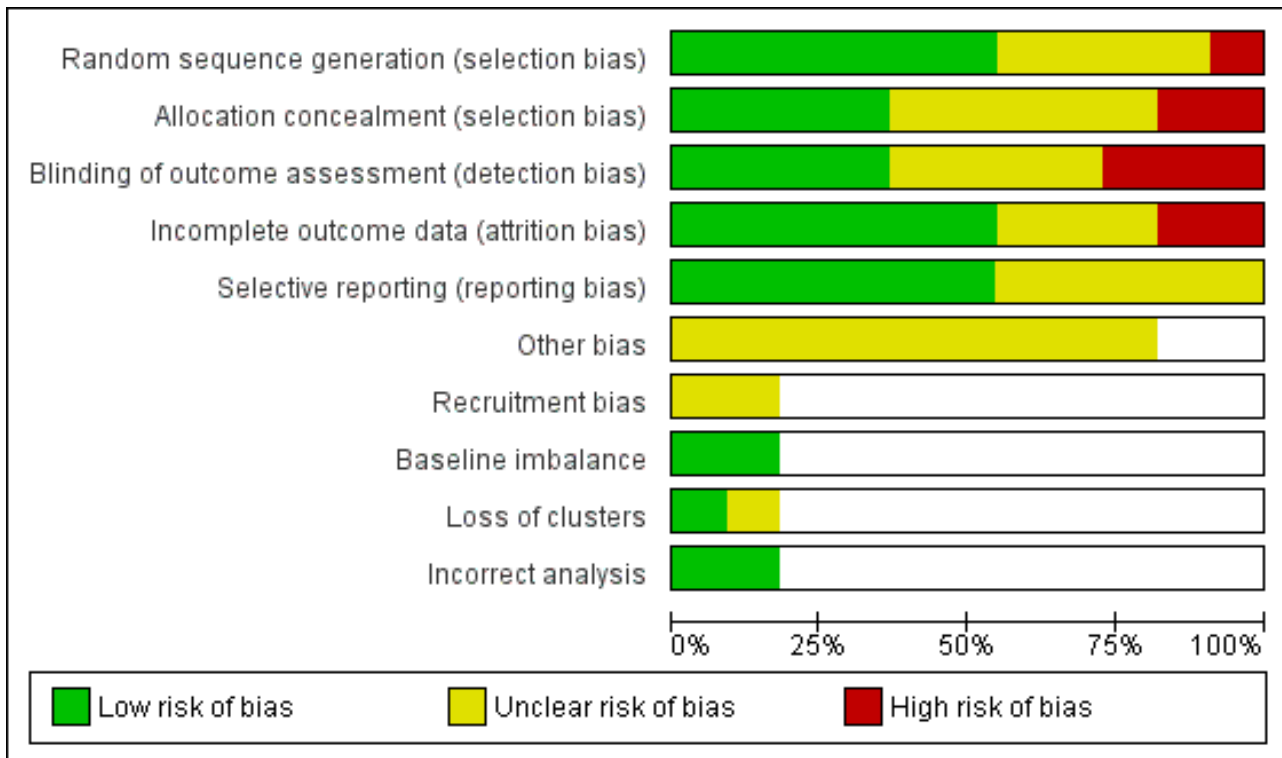
Risk of bias in included studies

We have summarized the 'Risk of bias' assessments [Figure 2](#) and [Figure 3](#), and have listed the reasons in the [Characteristics of included studies](#) section.

Figure 2. Risk of bias summary: review authors' judgements about each risk of bias item for each included trial.

	Random sequence generation (selection bias)	Allocation concealment (selection bias)	Blinding of outcome assessment (detection bias)	Incomplete outcome data (attrition bias)	Selective reporting (reporting bias)	Other bias	Recruitment bias	Baseline imbalance	Loss of clusters	Incorrect analysis
Chaisson 2001 USA	+	?	-	?	+	?				
Hsieh 2008 TWN	?	?	?	?	?	?				
Kamolratanakul 1999 THA	+	?	-	+	?	?				
Lwilla 2003 TZA	?	?	-	-	+		?	+	?	+
MacIntyre 2003 AUS	-	-	+	?	?	?				
Newell 2006 NPL	?	+	+	+	+		?	+	+	+
Walley 2001 PAK	+	+	+	+	+	?				
Wandwalo 2004 TZA	+	-	?	+	+	?				
Wright 2004 SWZ	?	?	+	+	?	?				
Zwarenstein 1998 ZAF	+	+	?	-	+	?				
Zwarenstein 2000 ZAF	+	+	?	+	?	?				

Figure 3. Risk of bias graph: review authors' judgements about each risk of bias item presented as percentages across all included trials.



Allocation

Seven trials used adequate methods to generate a random sequence: computer-generated random sequences (Chaisson 2001 USA; Walley 2001 PAK; Zwarenstein 1998 ZAF; Zwarenstein 2000 ZAF), a random-number table (Kamolratanakul 1999 THA), coin tossing (Wandwalo 2004 TZA) or drawing of lots from a basket (Newell 2006 NPL). One trial used alternate allocation, which was an inadequate randomization method (MacIntyre 2003 AUS). The remaining trials reports did not provide information (Hsieh 2008 TWN; Lwilla 2003 TZA; Wright 2004 SWZ).

Four trials employed adequate methods for concealing allocation (Newell 2006 NPL; Walley 2001 PAK; Zwarenstein 1998 ZAF; Zwarenstein 2000 ZAF). Five trials had unclear allocation concealment (Chaisson 2001 USA; Hsieh 2008 TWN; Kamolratanakul 1999 THA; Lwilla 2003 TZA; Wright 2004 SWZ) and the remaining two trials did not use allocation concealment (MacIntyre 2003 AUS; Wandwalo 2004 TZA).

Blinding

Only four trials blinded outcome assessment (MacIntyre 2003 AUS; Newell 2006 NPL; Walley 2001 PAK; Wright 2004 SWZ). It was not used in three trials (Chaisson 2001 USA; Kamolratanakul 1999 THA; Lwilla 2003 TZA) and unclear in the remaining trials (Hsieh 2008 TWN; Wandwalo 2004 TZA; Zwarenstein 1998 ZAF; Zwarenstein 2000 ZAF).

Incomplete outcome data

Two trials excluded more than 10% of participants from the analyses (Lwilla 2003 TZA; Zwarenstein 1998 ZAF). A further three

trials did not provide sufficient information to assess this aspect of trial quality (MacIntyre 2003 AUS; Newell 2006 NPL; Zwarenstein 2000 ZAF). The remaining trials had adequate follow-up.

Selective reporting

We found no evidence of selective reporting.

Other potential sources of bias

Hsieh 2008 TWN had a control group which was inpatient based. We have not included this group in our analyses. Two trials had the same control groups (Zwarenstein 1998 ZAF; Zwarenstein 2000 ZAF; see Table 1).

Lwilla 2003 TZA had one cluster in the community observed arm lost to follow-up and we therefore did not include it in the final analysis. Two cluster-RCTs had cluster adjustment.

Effects of interventions

See: **Summary of findings for the main comparison** Directly observed therapy (DOT) versus self-administered TB treatment; **Summary of findings 2** Home DOT versus clinic DOT; **Summary of findings 3** Summary of findings table 3; **Summary of findings 4** DOT versus self-administered therapy for intravenous drug users

1. DOT versus self-administered therapy

The details of the interventions are described in Table 1; and see Summary of findings for the main comparison.

Six trials compared DOT and self-administered therapy. The observers were described as either nurses (Zwarenstein 1998

ZAF; Zwarenstein 2000 ZAF), healthcare workers (Kamolratanakul 1999 THA; Walley 2001 PAK), community health workers (Kamolratanakul 1999 THA; Walley 2001 PAK), lay health workers (Zwarenstein 2000 ZAF), case managers (Hsieh 2008 TWN) or family members (Kamolratanakul 1999 THA; MacIntyre 2003 AUS; Walley 2001 PAK). In one trial participants were allowed to choose either a healthcare worker, a community health worker or a family member (Kamolratanakul 1999 THA).

Overall TB cure was low with self-administered therapy, ranging from 41% to 69% across trials, but on average this did not substantially improve with DOT (RR 1.08, 95% CI 0.91 to 1.27; five trials, 1645 participants, *moderate quality evidence*; Analysis 1.1). However, there was moderate statistical heterogeneity between trials (I^2 statistic = 68%; $P = 0.01$), with two trials finding benefits which reached standard levels of statistical significance (Kamolratanakul 1999 THA; Hsieh 2008 TWN). These differential effects may be explained by differences in the intensity of follow-up between the intervention and control arms (Analysis 1.2). However it is important to note that these two trials were also at unclear or high risk of selection bias and detection bias.

Kamolratanakul 1999 THA is the largest trial of DOT to date and found a higher TB cure with the intervention (76% versus 67%; RR 1.13, 95% CI 1.04 to 1.24; one trial, 836 participants). This trial had the least supervised control group (patients picked up their medication monthly), and one of the most intensely supervised intervention groups (doses were directly observed daily by a choice of health worker, community health worker or family member, and a health worker visited the patient at home every two weeks to check on adherence). This difference in intensity was similar in the second trial showing a difference (94% versus 69%; RR 1.36, 95% CI 1.06 to 1.75; one trial, 64 participants), but this trial was small and underpowered to have full confidence in this effect (Hsieh 2008 TWN).

Similarly, TB treatment completion ranged from 59% to 78% in those allocated to self-administration, and on average did not substantially improve with DOT (RR 1.07, 95% CI 0.96 to 1.19; six trials, 1839 participants, *moderate quality evidence*; Analysis 1.3). There was again moderate heterogeneity between trials ($I^2 = 57%$; $P = 0.04$), with the same two trials finding statistically significant benefits (Hsieh 2008 TWN; Kamolratanakul 1999 THA).

Different levels of monitoring in the self-administered groups did not yield substantially different levels of completion. (Self-treatment group: monthly monitoring RR 1.12, 95% 0.95 to 1.31; three trials, 1073 participants; every two weeks: RR 0.99, 95% 0.87 to 1.14; one trial, 497 participants); weekly monitoring RR 1.04, 95% 0.74 to 1.46; two trials, 269 participants; Analysis 1.4).

2. Home observation versus clinic observation

The trials are described in Table 2; and see Summary of findings 2.

Four trials compared home with clinic observation. Two tested family member direct observation against direct observation at clinic (Walley 2001 PAK; Wandwalo 2004 TZA) while the other two tested community health worker home visits to direct observation at clinic (Lwilla 2003 TZA; Zwarenstein 2000 ZAF).

TB cure was generally low for both the home observation groups (ranging from 43% to 57%) and for clinic observation (ranging from

41% to 64%). On average there was little or no difference between the two strategies (RR 1.02, 95% CI 0.88 to 1.18; four trials, 1556 participants, *moderate quality evidence*; Analysis 2.1).

Treatment completion ranged from 62% to 85% in those being observed at home and between 57% and 83% in clinic observation. On average there was little or no difference between the two locations (RR 1.04, 95% CI 0.91 to 1.17; three trials, 1034 participants, *moderate quality evidence*; Analysis 2.2).

One trial, Lwilla 2003 TZA, had more intense supervision of the observer than the other three trials. This intense supervision however did not improve cure rates (53% for home observation and 49% for clinic observation; RR 1.01, 95% CI 0.91 to 1.11; four trials, 1556 participants, Analysis 2.3). This trial however did not report on completion of treatment.

Wandwalo 2004 TZA had high completion rates (85% in home and 83% in clinic observation arm) but the cure rates were quite low in either arm (43% in both arms).

3. Community observed versus family observed

Two trials compared community health worker based observation with family based observation (Newell 2006 NPL; Wright 2004 SWZ). The trials are described in Table 3.

The Nepal trial, Newell 2006 NPL, had higher cure rates across the two arms (85% for community and 89% for family observed) compared with Wright 2004 SWZ (68% for community and 61% for family observed). There was little or no difference between community and family observation (RR 1.02, 95% CI 0.86 to 1.21; two trials, 1493 participants, *moderate quality evidence*; Analysis 3.1). However there was high statistical heterogeneity ($I^2 = 86%$; $P = 0.009$).

Similarly, for the completion of treatment outcome Newell 2006 NPL had higher rates across the two arms (96% in both arms) compared with Wright 2004 SWZ (74% for community and 67% for family observed). There was little or no difference between community and family observation (RR 1.05, 95% CI 0.90 to 1.22; two trials, 1493 participants, *low quality evidence*; Analysis 3.2). Again there was high statistical heterogeneity ($I^2 = 87%$; $P = 0.005$).

4. DOT versus self-administered therapy for intravenous drug users

One trial, Chaisson 2001 USA, had three arms, supervision at a clinic, peer group supervision and self-administered treatment. The level of treatment completion was similar in those self-administering (79%) and those under peer or clinic supervision (79%) (RR 1.00, 95% CI 0.88 to 1.13; one trial, 300 participants, *low quality evidence*; Analysis 4.1).

DISCUSSION

Summary of main results

TB cure and treatment completion were low with self-administered therapy in these trials, and direct observation did not substantially improve this. Positive effects with direct observation were seen in two trials where patients in the control group were only seen in clinic once a month, but not in the three trials where the controls were seen more frequently (every one or two weeks).

Trials comparing home observation (community observer or family observer) to clinic or healthcare worker led observation did not show any difference in TB cure or treatment completion. Within home-based direct observation, there were no differences between direct observation by a family member and direct observation by a community health worker.

Overall completeness and applicability of evidence

This Cochrane Review includes trials from both high- and low-burden countries, conducted between 1994 and 2008. Direct observation was implemented in line with current recommendations, and the findings remain applicable to TB treatment programmes today.

Cure and treatment completion with self-administered treatment were low in these trials, consistent with the outcomes seen in TB programmes at the time, and consequently it is remarkable that direct observation failed to substantially improve these.

One interpretation, offered by [Frieden 2007](#), is that these trials failed to implement direct observation effectively. This interpretation seems unreasonable to us, as the authors of the included trials did what they could to implement direct observation, and it may even be harder to implement, and less successful, outside of a clinical trial. Alternative interpretations are that the health systems were struggling to deliver TB treatment, and direct observation on its own did not resolve these underlying issues, or that TB patients experience financial or logistical barriers to compliance with direct observation. For example, it may cost patients money if they have to visit a health facility as was the case in [Walley 2001 PAK](#).

Direct observation as a strategy is still debated in TB and other chronic diseases. These debates and the findings of this review and others are important given the often huge resource implications of implementing a direct observation therapy programme. In two studies conducted in Brazil to evaluate the cost effectiveness of direct observation strategy; one reported a doubling of indirect costs to the patient compared to self-administered therapy ([Mohan 2007](#)) while the other reported an incremental cost-effectiveness ratio (ICER) of USD6616 per completed direct observed treatment compared to self-administered therapy ([Steffen 2010](#)).

Agreements and disagreements with other studies or reviews

The findings of this Cochrane Review are similar to the findings of a meta-analysis by [Pasipanodya 2013](#), who reported no difference between DOT and self-administered treatment in terms of reduction in microbiological failure, adverse drug reactions acquired resistance and relapses. The meta-analysis included ten studies, five RCTs and five observational studies. However, it is worth noting that the included trials were quite heterogeneous for a

meta-analysis, the quality scales used were quite unclear and their findings were probably influenced by one observational study.

In their clinical review, [Chan 2002](#) reported that direct observation is essential and effective for treatment and, by extension, TB elimination. The review was not systematic and mainly looked at areas where DOT has been done in conjunction with other interventions. It is probable that the other interventions or inputs, rather than specifically observing a patient as they take their medication, were beneficial for benefit, as highlighted by [Volmink 2000b](#). A review by [Tian 2014](#) reported that direct observation at a clinic was not more effective than self-treatment; but that community direct observation may be, with no difference detected between family and non-family direct observation. The review did not assess the inputs and associated supervision to the extent that we did in this Cochrane Review.

[Ford 2009](#), a review of direct observation in HIV therapy, also reported no effect on virological suppression. Though it might be argued that the therapy of these two diseases is different given that TB is for a finite duration whereas HIV is lifelong and thus adherence issues are different.

AUTHORS' CONCLUSIONS

Implications for practice

The available evidence indicates that direct observation, even when supervised by health staff, does not resolve poor adherence in TB treatment. Given the huge cost implications of direct observation, policy makers therefore might want to rethink their strategies for improving adherence. It is probably worthwhile in considering financial and logistical barriers to care, motivating patients and staff, and enhancing defaulter tracing mechanisms.

Implications for research

The lack of effects of direct observation in improving cure and completion rates is surprising but reflects the complexity of adherence. Further research in well functioning health systems is needed to assess alternative and complementary strategies to direct observation. Qualitative work focusing on defaulters, where defaulter mechanisms exist and how clinicians interact with patients would especially be important. Evaluation of the cost of DOT for patients and providers would also help in properly assessing these strategies.

ACKNOWLEDGEMENTS

We acknowledge the Aubrey Sheiham Public Health and Primary Care Scholarships for supporting Jamlick Karumbi in updating this Cochrane Review. The editorial base for the CIDG is funded by the UK Department for International Development (DFID) for the benefit of developing countries.

REFERENCES

References to studies included in this review

Chaisson 2001 USA {published data only}

Chaisson RE, Barnes GL, Hackman J, Watkinson L, Kimbrough L, Metha S, et al. A randomized, controlled trial of interventions to improve adherence to isoniazid therapy to prevent tuberculosis in injection drug users. *American Journal of Medicine* 2001;**110**(8):610-5.

Hsieh 2008 TWN {published data only}

Hsieh CJ, Lin LC, Kuo BI, Chiang CH, Su WJ, Shih JF. Exploring the efficacy of a case management model using DOTS in the adherence of patients with pulmonary tuberculosis. *Journal of Clinical Nursing* 2008;**17**(7):869-75.

Kamolratanakul 1999 THA {published data only}

Kamolratanakul P, Sawert H, Lertmaharit S, Kasetjaroen Y, Akksilp S, Tulaporn C, et al. Randomized controlled trial of directly observed treatment (DOT) for patients with pulmonary tuberculosis in Thailand. *Transactions of the Royal Society of Tropical Medicine and Hygiene* 1999;**93**(5):552-7.

Lwilla 2003 TZA {published data only}

Lwilla F, Schellenberg D, Masanja H, Acosta C, Galindo C, Aponte J, et al. Evaluation of efficacy of community-based vs. institutional-based direct observed short-course treatment for the control of tuberculosis in Kilombero district, Tanzania. *Tropical Medicine and International Health* 2003;**8**(3):204-10.

MacIntyre 2003 AUS {published data only}

MacIntyre CR, Goebel K, Brown GV, Skull S, Starr M, Fullinaw RO. A randomised controlled trial of the efficacy of family-based direct observation of anti-tuberculosis treatment in an urban, developed-country setting. *International Journal of Tuberculosis and Lung Disease* 2003;**7**(9):848-54.

Newell 2006 NPL {published data only}

Newell JN, Baral SC, Pande SB, Bam DS, Malla P. Family-member DOTS and community DOTS for tuberculosis control in Nepal: cluster-randomised controlled trial. *Lancet* 2006;**367**(9514):903-9.

Walley 2001 PAK {published data only}

Khan MA, Walley JD, Witter SN, Imran A, Safdar N. Costs and cost-effectiveness of different DOT strategies for the treatment of tuberculosis in Pakistan. Directly Observed Treatment. *Health Policy and Planning* 2002;**17**(2):178-86.

* Walley JD, Khan MA, Newell JN, Khan MH. Effectiveness of direct observation component of DOTS for tuberculosis: a randomised controlled trial in Pakistan. *Lancet* 2001;**357**(9275):664-9.

Wandwalo 2004 TZA {published data only}

Wandwalo E, Kapalata N, Egwaga S, Morkve O. Effectiveness of community-based directly observed treatment for tuberculosis in an urban setting in Tanzania: a randomised controlled trial. *International Journal of Tuberculosis and Lung Disease* 2004;**8**(10):1248-54.

Wright 2004 SWZ {published data only}

Wright J, Walley J, Phillip A, Pushpanathan S, Dlamini E, Newell J, et al. Direct observation of treatment for tuberculosis: a randomized controlled trial of community health workers versus family members. *Tropical Medicine and International Health* 2004;**9**(5):559-65.

Zwarenstein 1998 ZAF {published data only}

Zwarenstein M, Schoeman JH, Vundule C, Lombard CJ, Tatley M. Randomised controlled trial of self-supervised and directly observed treatment of tuberculosis. *Lancet* 1998;**352**(9137):1340-3.

Zwarenstein 2000 ZAF {published data only}

Zwarenstein M, Schoeman JH, Vundule C, Lombard CJ, Tatley M. A randomised trial of lay health workers as direct observers for treatment of tuberculosis. *International Journal of Tuberculosis and Lung Disease* 2000;**4**(6):550-4.

References to studies excluded from this review

Batki 2002 {published data only}

Batki SL, Gruber VA, Bradley JM, Bradley M, Delucchi K. A controlled trial of methadone treatment combined with directly observed isoniazid for tuberculosis prevention in injection drug users. *Drug and Alcohol Dependence* 2002;**66**(3):283-93.

Carroll 2004 {published data only}

Carroll K, Malefoasi G. Comparison of outcomes from a district tuberculosis control programme in the Pacific: before and after the implementation of DOTS. *Tropical Doctor* 2004;**34**(1):11-4.

Hwang 2004 {published data only}

Hwang TG, Kim SD, Yoo SH, Shin YC. Sputum smear conversion during mDOT. *Tuberculosis and Respiratory Diseases* 2004;**56**(5):485-94.

Jasmer 2004 {published data only}

Jasmer RM, Seaman CB, Gonzalez LC, Kawamura LM, Osmond DH, Daley CL. Tuberculosis treatment outcomes: directly observed therapy compared with self-administered therapy. *American Journal of Respiratory and Critical Care Medicine* 2004;**170**(5):561-6.

Lewin 2004 {published data only}

Lewin S, Dick J, Zwarenstein M, Lombard CJ. Staff training and ambulatory tuberculosis outcomes: a cluster randomized controlled trial in South Africa. *Bulletin of the World Health Organization* 2005;**83**(4):250-9.

Malotte 2001 {published data only}

Malotte CK, Hollingshead JR, Larro M. Incentives vs outreach workers for latent tuberculosis treatment in drug users. *American Journal of Preventive Medicine* 2001;**20**(2):103-7.

Matthew 2002 {published data only}

Matthew AJ, Eicher A, Davies PD. Comparison of hospital checked directly observed therapy with family supervised and

unchecked tuberculosis treatment in a rural setting in North India. *European Respiratory Journal* 2002;**20**(Suppl 38):215.

Moulding 2002 {published data only}

Moulding TS, Caymittes M. Managing medication compliance of tuberculosis patients in Haiti with medication monitors. *International Journal of Tuberculosis and Lung Disease* 2002;**6**(4):313-9.

Pungrassami 2002a {published data only}

Pungrassami P, Johnsen SP, Chongsuvivatwong V, Olsen J. Has directly observed treatment improved outcomes for patients with tuberculosis in southern Thailand?. *Tropical Medicine and International Health* 2002;**7**(3):271-9.

Pungrassami 2002b {published data only}

Pungrassami P, Chongsuvivatwong V. Are health personnel the best choice for directly observed treatment in southern Thailand? A comparison of treatment outcomes among different types of observers. *Transactions of the Royal Society of Tropical Medicine and Hygiene* 2002;**96**(6):695-9.

Sorete-Abore 2002 {published data only}

Sorete-Arbore A, Mihaescu T. Three years of DOTS strategy in Iasi county, Romania. *European Respiratory Journal* 2002;**20**(Suppl 38):217.

Tandon 2002 {published data only}

Tandon M, Gupta M, Tandon S, Gupta KB. DOTS versus self administered therapy (SAT) for patients with pulmonary tuberculosis: a randomised trial at a tertiary care hospital. *Indian Journal of Medical Science* 2002;**56**(1):19-21.

Thiam 2007 {published data only}

Thiam S, LeFevre AM, Hane F, Ndiaye A, Ba F, Fielding KL, et al. Effectiveness of a strategy to improve adherence to tuberculosis treatment in a resource-poor setting: a cluster randomized controlled trial. *JAMA* 2007;**297**(4):380-6.

Toyota 2003 {published data only}

Toyota E, Kobayashi N, Houjou M, Yoshizawa A, Kawana A, Kudo K. Usefulness of directly observed therapy (DOT) during hospitalization as DOTS in Japanese style. *Kekkaku* 2003;**78**(9):581-5.

Additional references

Anuwatnonthakate 2008

Anuwatnonthakate A, Limsomboon P, Nateniyom S, Wattanaamornkiat W, Komsakorn S, Moolphate S, et al. Directly observed therapy and improved tuberculosis treatment outcomes in Thailand. *PLoS One* 2008;**3**(8):e3089.

Barbara 2013

Seaworth BJ, Armitage LY, Griffith DE. First do no harm—adverse events, drug intolerance, and hepatotoxicity: how can we not justify directly observed therapy for treating tuberculosis?. *Clinical Infectious Diseases* 2013;**57**(7):1063-4.

Bayer 1995

Bayer R, Wilkinson D. Directly observed therapy for tuberculosis: history of an idea. *Lancet* 1995;**345**(8964):1545-8.

Bosch-Capblanch 2007

Bosch-Capblanch X, Abba K, Pictor M, Garner P. Contracts between patients and healthcare practitioners for improving patients' adherence to treatment, prevention and health promotion activities. *Cochrane Database of Systematic Reviews* 2007, Issue 2. [DOI: [10.1002/14651858.CD004808.pub3](https://doi.org/10.1002/14651858.CD004808.pub3)]

Chan 2002

Chan ED, Iseman MD. Current medical treatment for tuberculosis. *BMJ* 2002;**325**(7375):1282-6.

Chaulk 1998

Chaulk CP, Kazandjian VA. Directly observed therapy for treatment completion of pulmonary tuberculosis: Consensus Statement of the Public Health Tuberculosis Guidelines Panel. *JAMA* 1998;**279**(12):943-8.

Chien 2013

Chien JY, Lai CC, Tan CK, Chien ST, Yu CJ, Hsueh PR. Decline in rates of acquired multidrug-resistant tuberculosis after implementation of the directly observed therapy, short course (DOTS) and DOTS-Plus programmes in Taiwan. *Journal of Antimicrobial Chemotherapy* 2013;**68**(8):1910-6.

Dick 2005

Dick J, Murray E, Botha E. Operations Research Results. The effectiveness of TB DOTS supporters in South Africa. April 2005. <https://www.usaidassist.org/sites/assist/files/pnadf972.pdf> (accessed 23 January 2014).

Ford 2009

Ford N, Nachega JB, Engel ME, Mills EJ. Directly observed antiretroviral therapy: a systematic review and meta-analysis of randomised clinical trials. *Lancet* 2009;**374**(9707):2064-71.

Frieden 2003

Frieden TR, Sterling TR, Munsiff SS, Watt CJ, Dye C. Tuberculosis. *Lancet* 2003;**362**(9387):887-99.

Frieden 2007

Frieden TR, Sbarbaro JA. Promoting adherence to treatment for tuberculosis: the importance of direct observation. *Bulletin of the World Health Organization* 2007;**85**(5):407-9.

Gross 2009

Gross R, Tierney C, Andrade A, Lalama C, Rosenkranz S, Eshleman SH, et al. Modified directly observed antiretroviral therapy compared with self-administered therapy in treatment-naïve HIV-1-infected patients: a randomized trial. *Archives of Internal Medicine* 2009;**169**(13):1224-32.

Higgins 2011

Higgins J, Green S (editors). Higgins JPT, Green S (editors). *Cochrane Handbook for Systematic Reviews of Interventions* Version 5.1.0 [updated March 2011]. The Cochrane Collaboration, 2011. Available from www.cochrane-handbook.org (accessed 20 August 2013).

Directly observed therapy for treating tuberculosis (Review)

Hirpa 2013

Hirpa S, Medhin G, Girma B, Melese M, Mekonen A, Suarez P, et al. Determinants of multidrug-resistant tuberculosis in patients who underwent first-line treatment in Addis Ababa: a case control study. *BMC Public Health* 2013;**13**:782.

Hopewell 2006

Hopewell PC, Pai M, Maher D, Uplekar M, Raviglione MC. International Standards for Tuberculosis Care. *Lancet Infectious Diseases* 2006;**6**(11):710-25.

Jüni 2001

Jüni P, Altman DG, Egger M. Systematic reviews in health care: Assessing the quality of controlled clinical trials. *BMJ* 2001;**323**(7303):42-6.

Khan 2003

Khan MA, Walley JD, Witter SN, Imran A, Safdar N. Cost and cost effectiveness of different DOT strategies for the treatment of tuberculosis in Pakistan. Directly observed treatment. *Health Policy and Planning* 2003;**17**(2):178-86.

Liu 2008

Liu Q, Abba K, Alejandria MM, Balanag VM, Berba RP, Lansang MAD. Reminder systems and late patient tracers in the diagnosis and management of tuberculosis (Review). *Cochrane Database of Systematic Reviews* 2008, Issue 4. [DOI: [10.1002/14651858.CD006594.pub2](https://doi.org/10.1002/14651858.CD006594.pub2)]

Lutge 2012

Lutge EE, Wiysonge CS, Knight SE, Volmink J. Material incentives and enablers in the management of tuberculosis. *Cochrane Database of Systematic Reviews* 2012, Issue 1. [DOI: [10.1002/14651858.CD007952.pub2](https://doi.org/10.1002/14651858.CD007952.pub2)]

M'Imunya 2012

M'Imunya JM, Kredo T, Volmink J. Patient education and counselling for promoting adherence to treatment for tuberculosis. *Cochrane Database of Systematic Reviews* 2012, Issue 5. [DOI: [10.1002/14651858.CD006591.pub2](https://doi.org/10.1002/14651858.CD006591.pub2)]

Macq 2003

Macq JC, Theobald S, Dick J, Dembele M. An exploration of the concept of directly observed treatment (DOT) for tuberculosis patients: from a uniform to a customised approach. *International Journal of Tuberculosis and Lung Disease* 2003;**7**(2):103-9.

Mohan 2007

Mohan CI, Bishai D, Cavalcante S, Chaisson RE. The cost-effectiveness of DOTS in urban Brazil. *International Journal of Tuberculosis and Lung Disease* 2007;**11**(1):27-32.

Moonan 2011

Moonan PK, Quitugua TN, Pogoda JM, Woo G, Drewyer G, Sahbazian B, et al. Does directly observed therapy (DOT) reduce drug resistant tuberculosis?. *BMC Public Health* 2011;**11**:19.

Munro 2007

Munro SA, Lewin SA, Smith HJ, Engel ME, Fretheim A, Volmink J. Patient adherence to tuberculosis treatment: a systematic review of qualitative research. *PLoS Medicine* 2007;**4**(7):e238.

Pasipanodya 2013

Pasipanodya JG, Gumbo T. A meta-analysis of self-administered vs directly observed therapy effect on microbiologic failure, relapse, and acquired drug resistance in tuberculosis patients. *Clinical Infectious Diseases* 2013;**57**(1):21-31.

Review Manager 5 [Computer program]

The Nordic Cochrane Centre, The Cochrane Collaboration. Review Manager (RevMan). Version 5.3. Copenhagen: The Nordic Cochrane Centre, The Cochrane Collaboration, 2014.

Sepkowitz 1995

Sepkowitz KA, Raffalli J, Riley L, Kiehn TE, Armstrong D. Tuberculosis in the AIDS era. *Clinical Microbiology Reviews* 1995;**8**(2):180-99.

Smieja 2010

Smieja M, Marchetti C, Cook D, Smaill FM. Isoniazid for preventing tuberculosis in non-HIV infected persons. *Cochrane Database of Systematic Reviews* 2010, Issue 1. [DOI: [10.1002/14651858.CD001363](https://doi.org/10.1002/14651858.CD001363)]

Steffen 2010

Steffen R, Menzies D, Oxlade O, Pinto M, de Castro AZ, Monteiro P, et al. Patients' costs and cost-effectiveness of tuberculosis treatment in DOTS and non-DOTS facilities in Rio de Janeiro, Brazil. *PLoS One* 2010;**5**(11):e14014.

Tian 2014

Tian JH, Lu ZX, Bachmann MO, Song FJ. Effectiveness of directly observed treatment of tuberculosis: a systematic review of controlled studies. *International Journal of Tuberculosis and Lung Disease* 2014 September;**18**(9):1092-8. [DOI: [10.5588/ijtld.13.0867](https://doi.org/10.5588/ijtld.13.0867).]

van den Boogaard 2012

van den Boogaard J, Msoka E, Homfray M, Kibiki GS, Heldens JJ, Felling AJ, et al. An exploration of patients perceptions of adherence to tuberculosis treatment in Tanzania. *Qualitative Health Research* 2012;**22**(6):835-45.

Volmink 2000b

Volmink J, Matchaba P, Garner P. Directly observed therapy and treatment adherence. *Lancet* 2000;**355**(9212):1345-50.

WHO 2002

WHO Global Tuberculosis Programme. An Expanded DOTS Framework for Effective Tuberculosis Control. Stop TB Communicable Diseases. Geneva: World Health Organization, 2002.

WHO 2010

World Health Organization. Treatment of tuberculosis guidelines: Fourth edition. 2010. http://apps.who.int/iris/bitstream/10665/44165/1/9789241547833_eng.pdf?ua=1&ua=1 (accessed 01 August 2014).

Directly observed therapy for treating tuberculosis (Review)

WHO 2013

WHO Global TB Programme. Global Tuberculosis Report 2013. http://apps.who.int/iris/bitstream/10665/91355/1/9789241564656_eng.pdf (accessed 01 August 2014).

References to other published versions of this review
Volmink 1997

Volmink J, Garner P. Systematic review of randomised controlled trials of strategies to promote adherence to tuberculosis treatment. *BMJ* 1997;**315**(7120):1403-6.

Volmink 2000a

Volmink J, Garner P. Interventions for promoting adherence to tuberculosis management. *Cochrane Database of Systematic Reviews* 2000, Issue 4. [DOI: [10.1002/14651858.CD000010](https://doi.org/10.1002/14651858.CD000010)]

Volmink 2001

Volmink J, Garner P. Directly observed therapy for treating tuberculosis. *Cochrane Database of Systematic Reviews* 2001, Issue 4. [DOI: [10.1002/14651858.CD003343](https://doi.org/10.1002/14651858.CD003343)]

Volmink 2003

Volmink J, Garner P. Directly observed therapy for treating tuberculosis. *Cochrane Database of Systematic Reviews* 2003, Issue 1. [DOI: [10.1002/14651858.CD003343](https://doi.org/10.1002/14651858.CD003343)]

Volmink 2006

Volmink J, Garner P. Directly observed therapy for treating tuberculosis. *Cochrane Database of Systematic Reviews* 2006, Issue 2. [DOI: [10.1002/14651858.CD003343.pub2](https://doi.org/10.1002/14651858.CD003343.pub2)]

Volmink 2007

Volmink J, Garner P. Directly observed therapy for treating tuberculosis. *Cochrane Database of Systematic Reviews* 2007, Issue 4. [DOI: [10.1002/14651858.CD003343.pub3](https://doi.org/10.1002/14651858.CD003343.pub3)]

* Indicates the major publication for the study

CHARACTERISTICS OF STUDIES
Characteristics of included studies [ordered by study ID]
Chaisson 2001 USA

Methods	<p>Generation of allocation sequence: randomized, with factorial overlay; computer-generated random numbers.</p> <p>Allocation concealment: not stated.</p> <p>Blinding: none.</p> <p>Completeness of follow-up: 88%.</p>
Participants	<p>Number: 300 randomized; 73% men; 85% unemployed; 27% with documented human immunodeficiency virus (HIV) infection.</p> <p>Included: adult, intravenous drug users with positive tuberculin skin test (at least 10 mm induration or 5 mm if HIV positive); given isoniazid preventive therapy for 6 months.</p> <p>Excluded: people with active TB.</p>
Interventions	<ol style="list-style-type: none"> 1. DOT twice weekly by outreach nurse at clinic or community location. 2. Daily self-administration of treatment, monthly peer counselling group meetings with lunch, and clinical assessments by a nurse; peer counsellor was a former injection user who had completed preventive therapy, and who was trained in counselling and supervised by a health educator. 3. Daily self-administration of treatment with monthly clinic assessment; factorial design with immediate or deferred US\$10 stipend at the end of each month; deferred payments credited each month and given when treatment completed or participant withdrew.
Outcomes	<ol style="list-style-type: none"> 1. 6 months treatment completed, defined as 80% or more of treatments taken (observed for DOT group and 6 monthly visits plus reporting that at least 80% medication taken during a month for other groups). 2. Pill counts. 3. Isoniazid metabolites in the urine. 4. Electronically monitored bottle opening in a subset.

Directly observed therapy for treating tuberculosis (Review)

Chaisson 2001 USA (Continued)

Notes

Location: Baltimore City Health Department TB Clinic, USA.

Date: 1995 to 1997.

Duration of DOT duration not stated.

Risk of bias

Bias	Authors' judgement	Support for judgement
Random sequence generation (selection bias)	Low risk	"generated using computer algorithm".
Allocation concealment (selection bias)	Unclear risk	No details reported.
Blinding of outcome assessment (detection bias) All outcomes	High risk	None. "Blinding of the study was not possible."
Incomplete outcome data (attrition bias) All outcomes	Unclear risk	There were losses to follow-up in each arm though not differential there are no reports on them.
Selective reporting (reporting bias)	Low risk	All outcomes stated in the methodology are reported.
Other bias	Unclear risk	Not applicable.

Hsieh 2008 TWN

Methods	Generation of allocation sequence: not stated. Randomization: stratified. Allocation concealment: not stated. Blinding: not stated. Completeness of follow-up: no losses (18/114) dropped to enable matching.
Participants	Number; 96 randomized into three groups; Matched by age and gender; confirmed TB diagnosis and over 18 yrs.
Interventions	1. Case manager directly supervised medicine intake for first two months, then self-administration with weekly unscheduled visit. 2. Self-administration with monthly unscheduled visit by the case manager. 3. Routine care in the ward with monthly visit by case manager.
Outcomes	1. Monthly adherence levels (>80% or <80%) >80% defined as at most 5 drug interruptions per month. 2. Completion rate - Proportion of patients who completed the treatment course. 3. Success rate - Proportion of patients who completed treatment plus confirmed negative sputum result.
Notes	Location: Taiwan. Trial period: May 2002 to July 2003.

Directly observed therapy for treating tuberculosis (Review)

Hsieh 2008 TWN (Continued)

Duration of observation was 6 months.

The patients were not given a choice of DOT observer.

Risk of bias

Bias	Authors' judgement	Support for judgement
Random sequence generation (selection bias)	Unclear risk	"There were 114 subjects meeting the sampling criteria who were then matched by age and gender and randomized into one of three groups".
Allocation concealment (selection bias)	Unclear risk	No details reported.
Blinding of outcome assessment (detection bias) All outcomes	Unclear risk	No details reported.
Incomplete outcome data (attrition bias) All outcomes	Unclear risk	18/114 dropped to enable matching.
Selective reporting (reporting bias)	Unclear risk	All outcomes stated in the methodology are reported.
Other bias	Unclear risk	Not applicable.

Kamolratanakul 1999 THA

Methods	<p>Generation of allocation sequence: central block random allocation scheme prepared for each of 15 trial sites; random-number table used.</p> <p>Allocation concealment: none.</p> <p>Blinding: no blinding of assessors.</p> <p>Completeness of follow-up: 100% (no losses).</p>
Participants	<p>Number: 837 randomized; 73% male.</p> <p>Included: new smear positive adults (aged 15+).</p>
Interventions	<ol style="list-style-type: none"> Daily supervision: participants chose their supervisor from (a) health centre staff, (b) community members, or (c) family members; for (b) and (c) health workers visited homes twice monthly (first 2 months) or monthly for checking of treatment cards, pill counts, and urine tests. Self-administration of treatment: 1 month drug supply given at diagnosis and after each follow-up visit; no treatment supervision between visits. <p>All participants received the same drug regimen: isoniazid-rifampicin-pyrazinamide-ethambutol for 2 months and isoniazid-rifampicin for 4 months.</p>
Outcomes	<ol style="list-style-type: none"> Cure rate (primary outcome): completed 6 months antituberculous therapy, with 2 negative sputum exams, 1 at end of treatment. Treatment completion: completed 6 months antituberculous therapy but less than 2 sputum exams. Sputum conversion rate: negative sputum at end of third month. Percentage defaults. Percentage transfers.

Directly observed therapy for treating tuberculosis (Review)

Kamolratanakul 1999 THA *(Continued)*

6. Caseholding rate.

Notes	Location: Thailand. Date: 1996 to 1997. Duration of DOT not stated. Informed consent not obtained as participants were not told that they were participating in a study. Choice of supervisor for DOT participants: 352 chose a family member; 34 chose a community member; and 24 chose health centre staff. One participant in daily supervision arm excluded due to protocol violation so not strictly intention-to-treat.
-------	---

Risk of bias

Bias	Authors' judgement	Support for judgement
Random sequence generation (selection bias)	Low risk	Generated using random number tables.
Allocation concealment (selection bias)	Unclear risk	Inadequate information.
Blinding of outcome assessment (detection bias) All outcomes	High risk	Investigators not blinded though the patients were blinded.
Incomplete outcome data (attrition bias) All outcomes	Low risk	There were no exclusions.
Selective reporting (reporting bias)	Unclear risk	All outcomes stated in the methodology are reported.
Other bias	Unclear risk	Not applicable.

Lwilla 2003 TZA

Methods	Cluster-RCT: 9 pairs of centres matched by type and size. Generation of allocation sequence: unclear. Allocation concealment: unclear. Blinding: none. Completeness of follow-up: 87% at 2 months and 69% at 7 months.
Participants	Number: 18 clusters randomized; 522 participants; mean age 35; 60% male. Included: new smear positive adults.

Directly observed therapy for treating tuberculosis (Review)

Lwilla 2003 TZA (Continued)

Interventions	<ol style="list-style-type: none"> 1. Community-based DOT: daily observation by community health volunteer (site not stated) for intensive 2-month treatment period; health worker visited volunteer every 2 weeks and district co-ordinator visited volunteer monthly; at each visit participants' treatment card checked and drugs counted. 2. Institution-based DOT: required to attend health facility daily for 2 months, and then monthly after this. <p>Continuation phase of 6 months: both groups managed the same and expected to self-administer treatment daily.</p>
Outcomes	<ol style="list-style-type: none"> 1. Sputum negative at 2 months (primary outcome). 2. Cure at 7 months (sputum negative at 2 months and at 5 to 7 months).
Notes	<p>Location: Tanzania.</p> <p>Date: 1999 to 2000.</p> <p>Duration of DOT not stated.</p>

Risk of bias

Bias	Authors' judgement	Support for judgement
Random sequence generation (selection bias)	Unclear risk	No details reported.
Allocation concealment (selection bias)	Unclear risk	No details reported.
Blinding of outcome assessment (detection bias) All outcomes	High risk	None. "This study was an unmasked cluster randomized trial".
Incomplete outcome data (attrition bias) All outcomes	High risk	Only 68% (311/437 participants) were evaluated at 7 months. (This could affect the cure outcome).
Selective reporting (reporting bias)	Low risk	All outcomes stated in the methodology are reported.
Recruitment bias	Unclear risk	No details of any shifting, though the cluster sizes varied from as low as 2 persons to 232 persons.
Baseline imbalance	Low risk	Clusters were similar though the size varied and one cluster had possibly a more sicker patient profile due to its highly specialized nature.
Loss of clusters	Unclear risk	One cluster in the community based intervention did not have patients hence was dropped in the analysis.
Incorrect analysis	Low risk	Cluster adjusted hence comparable to other RCTs randomizing individuals.

MacIntyre 2003 AUS

Methods	<p>Quasi-RCT</p> <p>Generation of allocation sequence: alternate allocation</p> <p>Concealment of allocation: none</p>
---------	--

Directly observed therapy for treating tuberculosis (Review)

MacIntyre 2003 AUS (Continued)

	Blinding: assessment of urinary isoniazid blinded Completeness of follow-up: not stated
Participants	Number: 173 recruited, mostly foreign nationals; male 51%; mean age 41 (range 14 to 83). Included: new TB participants. Excluded: multiple-drug resistant TB; relapsed TB; human immunodeficiency virus (HIV)-positive cases; and nontuberculous mycobacterial infections.
Interventions	1. Family-based DOT: daily observation by a nominated family member who received education and was expected to record participant compliance with pill taking; weekly phone calls from a nurse; nurse on call; nurse home visit every 2 weeks. 2. Self-administration of treatment: daily. Both groups had monthly visits to health facilities and standardized recording charts.
Outcomes	Treatment completion measured by: 1. Percentage clinic attendances to collect drugs. 2. Urinary isoniazid (6 random checks over months; all had to be > 0).
Notes	Location: Australia. Date: 1998 to December 2000. Duration of DOT not stated.

Risk of bias

Bias	Authors' judgement	Support for judgement
Random sequence generation (selection bias)	High risk	Not randomly. "Patients were systematically allocated to receive FDOT or ST".
Allocation concealment (selection bias)	High risk	Systematic allocation "The first patient was randomly allocated to the ST arm, every second patient was allocated to FDOT, and the remainder to ST".
Blinding of outcome assessment (detection bias) All outcomes	Low risk	Assessors were blinded.
Incomplete outcome data (attrition bias) All outcomes	Unclear risk	Insufficient information as to what happened to those who refused family DOT.
Selective reporting (reporting bias)	Unclear risk	All outcomes stated in the methodology are reported.
Other bias	Unclear risk	Not applicable.

Newell 2006 NPL

Methods	Cluster-RCT. Generation of allocation sequence: 5 randomly selected districts allocated to each arm; the name of each district was written on an individual paper and randomly drawn from a basket.
---------	--

Directly observed therapy for treating tuberculosis (Review)

Newell 2006 NPL (Continued)

Allocation concealment: method not stated.

Blinding: laboratory technicians assessing the primary outcomes were blinded.

Completeness of follow-up: 100% (no clusters or individuals lost).

Participants	Number: 10 districts with 907 people randomized; all smear positive; 67% male. Included: people with TB (aged 15+); new smear-positive cases, diagnosed at health facilities in the trial area; human immunodeficiency virus (HIV) status not known.
Interventions	<ol style="list-style-type: none"> 1. Community-based DOT: daily treatment supervised by a female community health worker (unpaid volunteer selected by the district health authority) or village health worker (community worker paid by government). Patients mainly visited at home, but occasionally patients met their supervisor at her home. Supervision was for the duration of treatment with drugs provided to the supervisor monthly. Tracing by the supervisor was undertaken for patients who discontinued treatment. 2. Family-based DOT: daily supervision by a household member chosen by the participant with drugs provided to the supervisory weekly. Government workers traced those who discontinued treatment.
Outcomes	<ol style="list-style-type: none"> 1. Treatment success: cure plus treatment completion (primary). 2. Treatment success compared with the WHO target of 85%. 3. Estimated case detection rate with the WHO target of 70%. 4. Compare the above rates in men and women.
Notes	Location: hill and mountain districts of Nepal. Date: 2002 to 2003.

Risk of bias

Bias	Authors' judgement	Support for judgement
Random sequence generation (selection bias)	Unclear risk	Insufficient information on selection of 10 districts out of 17.
Allocation concealment (selection bias)	Low risk	Randomly picked papers from an opaque bag.
Blinding of outcome assessment (detection bias) All outcomes	Low risk	Assessors were blinded.
Incomplete outcome data (attrition bias) All outcomes	Low risk	No cluster was lost to follow-up or excluded.
Selective reporting (reporting bias)	Low risk	All outcomes stated in the methodology are reported.
Recruitment bias	Unclear risk	Not reported if there were patients who shifted to the different intervention arms, though they were separated by a mountainous region.
Baseline imbalance	Low risk	Characteristics similar.
Loss of clusters	Low risk	No loss reported.
Incorrect analysis	Low risk	Cluster adjustment done.

Walley 2001 PAK

Methods	<p>Generation of allocation sequence: computer-generated random numbers.</p> <p>Allocation concealment: opaque, sealed envelopes.</p> <p>Blinding: assessors blinded.</p> <p>Completeness of follow-up: not stated.</p>
Participants	<p>Number: 497 randomized; 51.3% male.</p> <p>Included: adults (aged 15+); new smear-positive cases.</p>
Interventions	<ol style="list-style-type: none"> 1. DOT by a health worker at a health facility that met "access criteria" or a community health worker at or near the participant's home: access criteria were return journey from the participant's home to facility < 2 km, < 2 hr duration, and < 10 rupees, and for unmarried women an accompanying relative was available; participants had to attend a health facility or meet a community health worker 6 times per week for 2 months to take their drugs; thereafter they self-administered drugs that the participants collected twice a month. 2. DOT by a family member chosen by the participant. 3. Self-administration of drugs collected by participant fortnightly. <p>All participants received isoniazid-rifampicin-pyrazinamide-ethambutol for 2 months and isoniazid-ethambutol for 6 months.</p>
Outcomes	<ol style="list-style-type: none"> 1. Cure: sputum negative at 7 or 8 months and on at least 1 previous occasion. 2. Treatment completion: treatment completed, but smear results not available on at least 2 occasions before completion of treatment. 3. Treatment failure. 4. Death. 5. Default. 6. Transferred out.
Notes	<p>Location: Pakistan</p> <p>Date: 1996 to 1998</p>

Risk of bias

Bias	Authors' judgement	Support for judgement
Random sequence generation (selection bias)	Low risk	Computer generated random sequence.
Allocation concealment (selection bias)	Low risk	Opaque envelopes were used and third party calls.
Blinding of outcome assessment (detection bias) All outcomes	Low risk	Outcome assessors were blinded.
Incomplete outcome data (attrition bias) All outcomes	Low risk	There were no exclusions after randomization.
Selective reporting (reporting bias)	Low risk	All outcomes stated in the methodology are reported.

Directly observed therapy for treating tuberculosis (Review)

Walley 2001 PAK (Continued)

Other bias	Unclear risk	Not applicable.
------------	--------------	-----------------

Wandwalo 2004 TZA

Methods	<p>Generation of allocation sequence: coin tossing in each of 5 clinics.</p> <p>Allocation concealment: none.</p> <p>Blinding: none.</p> <p>Completeness of follow-up: 100% (no losses).</p>
Participants	<p>Number: 587 randomized; 322 smear positive, 182 smear negative, and 83 extrapulmonary TB; 57% male.</p> <p>Included: people with TB (aged 5+); new smear positive, smear negative, and extrapulmonary cases; human immunodeficiency virus (HIV) status not known.</p> <p>Excluded: previously treated for TB; severe illness; transferred from another clinic; previously enrolled in the study.</p>
Interventions	<ol style="list-style-type: none"> Community-based DOT: daily treatment supervised at home by 'guardian' (usually a family member) during 2-month intensive period; supervisors trained to observe drug taking, encourage participants to complete treatment, keep records, collect drugs, and assess drug side effects; during first 2 months participants received 'spot' visits by health workers who conducted treatment card checks and pill counts; during first 2 months participants also requested to attend clinic every 2 weeks for clinical review and progress monitoring. Health facility-based DOT: daily supervision at clinic by health workers during the 2 month intensive period. <p>Apart from the observation option participants received the same standardized management including drug therapy.</p>
Outcomes	<ol style="list-style-type: none"> Treatment success: cure plus treatment completion. Cure: smear positive initially and negative at 7 or 8 months and on at least 1 previous occasion. Treatment completion: positive results initially, negative at 2 months and no results at end of treatment; or smear negative initially and received treatment on clinical grounds; or those who completed full course of treatment but had no initial or end-of-treatment results. Death: from all causes. Treatment failure: participants who remained or became smear positive or 5 months or later. Default: failed to collect medication for > 2 consecutive months. Transferred out: transferred to a clinic in another area.
Notes	<p>Location: Dar es Salaam, Tanzania.</p> <p>Date: 2001 to 2003.</p>

Risk of bias

Bias	Authors' judgement	Support for judgement
Random sequence generation (selection bias)	Low risk	"Randomly by coin toss".
Allocation concealment (selection bias)	High risk	None.

Directly observed therapy for treating tuberculosis (Review)

Wandwalo 2004 TZA (Continued)

Blinding of outcome assessment (detection bias) All outcomes	Unclear risk	No details reported.
Incomplete outcome data (attrition bias) All outcomes	Low risk	No exclusions.
Selective reporting (reporting bias)	Low risk	All outcomes stated in the methodology are reported.
Other bias	Unclear risk	Not applicable.

Wright 2004 SWZ

Methods	<p>Generation of allocation sequence: unclear; stratified into adults and children; then, within each group, randomized by type of TB (sputum positive, sputum negative, extrapulmonary, relapse).</p> <p>Allocation concealment: unclear; sealed, sequentially numbered envelopes not stated if opaque.</p> <p>Blinding: assessors of sputum results blinded.</p> <p>Completeness of follow-up: 98%.</p>
Participants	<p>Number: 1353 randomized; 55% male; most 15+ years.</p> <p>Included: adults and children with smear positive or negative, extrapulmonary TB, or relapse of previously treated TB.</p> <p>Excluded: died before discharge; or too ill to receive outpatient treatment; lived in area without treatment supporter; or referred in after treatment commenced.</p>
Interventions	<ol style="list-style-type: none"> 1. DOT by community health worker: participants visited for observation daily; community health worker trained to provide daily treatment supervision, record adherence on Treatment Support Card, remind participants who did not report for treatment, and notify diagnostic centre about those who defaulted treatment. 2. DOT by family member: family member or carer chosen by participant trained to provide daily treatment supervision, record adherence on Treatment Support Card, and remind participants who did not report for treatment; participants also required to visit the community health worker weekly to check side effects and adherence and receive health education; defaulters reported to the diagnostic centre.
Outcomes	<ol style="list-style-type: none"> 1. Cure or treatment completion: cure defined as smear negative at 6 months and on at least 1 previous occasion; treatment completion defined as treatment completed but smear results not available on at least 2 occasions before treatment completion. 2. Death. 3. Treatment failure: remained or became smear positive at ≥ 5 months. 4. Default: failed to collect medication for > 2 consecutive months. 5. Transferred out: formally transferred to another centre.
Notes	<p>Location: Swaziland.</p> <p>Date: 2000 to 2002.</p>

Risk of bias

Bias	Authors' judgement	Support for judgement
------	--------------------	-----------------------

Directly observed therapy for treating tuberculosis (Review)

Wright 2004 SWZ (Continued)

Random sequence generation (selection bias)	Unclear risk	Insufficient information.
Allocation concealment (selection bias)	Unclear risk	Use of sealed envelopes not clear whether opaque. "sealed, sequentially numbered, stratum specific envelopes containing treatment assignments".
Blinding of outcome assessment (detection bias) All outcomes	Low risk	Laboratory assessors were blinded.
Incomplete outcome data (attrition bias) All outcomes	Low risk	Non differential loss to follow-up (4/664 and 5/662).
Selective reporting (reporting bias)	Unclear risk	All outcomes stated in the methodology are reported.
Other bias	Unclear risk	Not applicable.

Zwarenstein 1998 ZAF

Methods	<p>Generation of allocation sequence: computer-generated random numbers.</p> <p>Allocation concealment: consecutively numbered, opaque, sealed envelopes in each of 5 clinics.</p> <p>Blinding: none.</p> <p>Completeness of follow-up: 114/120 (95%) in 1 trial and 102/120 (85%) in other trial excluded from analysis.</p>
Participants	<p>Number: 216 included in analysis; 62% male; 57% < 35 years.</p> <p>Included: adults (aged 15+) with pulmonary TB; both new and re-treatment cases.</p> <p>Excluded: severe disease or multiple drug resistance; treatment at a non-study clinic for more than 2 weeks; need to be supervised at school or at the workplace; and leaving the area within a month.</p>
Interventions	<ol style="list-style-type: none"> DOT by clinic nurses: participants asked to visit the clinic 5 days a week for 8 weeks (new participants) or for 12 weeks (re-treatment participants); thereafter expected attendance was 3 days a week for the continuation phase; clinic visits restricted to normal working hours and adherence card signed and dated by a nurse at each visit and kept at the clinic. Self-administration of treatment: participants had to visit clinic once a week or send a relative to collect drugs; participants completed their own adherence card for every day of drug taking and a nurse recorded the weekly drug collection; adherence card handed to nurse at the weekly clinic visit. <p>New cases received Rifater (combined rifampicin-isoniazid-pyrazinamide) for 8 weeks followed by Rifinah 4 (combined rifampicin-isoniazid) plus additional isoniazid for 18 weeks.</p> <p>Retreatment participants received Rifater plus ethambutol for 12 weeks and Rifinah plus rifampicin-ethambutol for 22 weeks.</p>
Outcomes	<ol style="list-style-type: none"> "Successful treatment" included those who were cured and those who completed treatment; "cured" applied to those who converted from a positive smear or culture, or both, to a negative smear or culture, or both, at the end of treatment (6 months for new participants and 8 months for re-treatment participants); "treatment completed" referred to participants who (a) completed the full course of treatment but had no pretreatment or post-treatment bacteriological results; (b) had negative pre-

Directly observed therapy for treating tuberculosis (Review)

Zwarenstein 1998 ZAF (Continued)

treatment results and had been treated on clinical grounds; or (c) had positive pretreatment results, negative results after 2 months and no post-treatment results.

2. "Treatment failure" applied to participants with a positive smear or culture at the end of treatment.
3. "Treatment interrupters" applied to participants who stopped taking treatment for 8 or more weeks during the treatment period.
4. Transfer to another treatment facility.
5. Death from TB or other causes while on treatment.

Notes

Location: 1 trial in each of 2 low-income communities near Cape Town, South Africa.

Date: 1994 to 1995.

Results combined.

54 participants in 1 trial allocated to community supervision not reported in this paper.

Exclusions from analysis: trial 1 (6 cases of multiple drug resistance) and trial 2 (12 cases of multiple drug resistance and 6 not TB).

Number of exclusions per arm of the 2 trials not given.

Risk of bias

Bias	Authors' judgement	Support for judgement
Random sequence generation (selection bias)	Low risk	"Random sequence generated by a computer algorithm".
Allocation concealment (selection bias)	Low risk	"Consecutively numbered opaque sealed envelopes were used".
Blinding of outcome assessment (detection bias) All outcomes	Unclear risk	Insufficient information on whether there was any blinding or not.
Incomplete outcome data (attrition bias) All outcomes	High risk	There was differential exclusions between the intervention and control arms.
Selective reporting (reporting bias)	Low risk	All outcomes stated in the methodology are reported.
Other bias	Unclear risk	Not applicable.

Zwarenstein 2000 ZAF

Methods

Generation of allocation sequence: computer-generated random numbers.

Allocation concealment: consecutively numbered, opaque, sealed envelopes.

Blinding: none.

Completeness of follow-up: not stated.

Participants

Number: 174 randomized.

Included: new or re-treatment participants aged 15+ who were sputum or culture positive.

Directly observed therapy for treating tuberculosis (Review)

Zwarenstein 2000 ZAF (Continued)

Interventions	<ol style="list-style-type: none"> 1. DOT by clinic nurses (see Zwarenstein 1998 ZAF). 2. Self-administration (see Zwarenstein 1998 ZAF). 3. DOT by lay health workers: participants took drugs at home of a lay health worker under supervision; if participant missed treatment for 1 day, a lay health worker visited participant's home and if necessary a member of the South African Tuberculosis Association (SANTA) also visited the participant.
Outcomes	As for Zwarenstein 1998 ZAF .
Notes	Location: 4 clinics in a township near Cape Town, South Africa. Date: 1994 to 1995. 18 participants excluded from analysis: 12 with multiple-drug resistant TB and 6 not TB.

Risk of bias

Bias	Authors' judgement	Support for judgement
Random sequence generation (selection bias)	Low risk	Random sequence generated by a computer algorithm.
Allocation concealment (selection bias)	Low risk	Consecutively numbered opaque sealed envelopes.
Blinding of outcome assessment (detection bias) All outcomes	Unclear risk	Insufficient information on whether there was any blinding or not.
Incomplete outcome data (attrition bias) All outcomes	Low risk	There were exclusions though not differentiated between intervention arms. "After exclusion of 12 MDR and six non-TB patients".
Selective reporting (reporting bias)	Unclear risk	All outcomes stated in the methodology are reported.
Other bias	Unclear risk	Not applicable.

Characteristics of excluded studies [ordered by study ID]

Study	Reason for exclusion
Batki 2002	Compared direct observation plus with methadone treatment for injecting drug users with routine TB treatment without methadone.
Carroll 2004	Before-and-after study; no control group.
Hwang 2004	Not randomized.
Jasmer 2004	Different criteria for allocation to self-administration or direct observation.
Lewin 2004	An educational intervention was evaluated.
Malotte 2001	Evaluates incentives for IV drug users within the context of a direct observation programme.

Directly observed therapy for treating tuberculosis (Review)

Study	Reason for exclusion
Matthew 2002	Cohort study.
Moulding 2002	Trial evaluating devices that monitor treatment using uranium along a strip of photographic film.
Pungrassami 2002a	Not randomly allocated; A publication reporting same data as Pungrassami 2002b .
Pungrassami 2002b	Not randomly allocated; A publication reporting same data as Pungrassami 2002a .
Sorete-Abore 2002	Cohort study.
Tandon 2002	Described as a RCT, but the randomization led to very different numbers in the 2 groups; subsequently over 50 participants (out of a total of 379) crossed over from self-treatment to direct observation and were excluded from the analysis; little detail for the rest of the study provided.
Thiam 2007	Multifaceted intervention including DOT.
Toyota 2003	Patients in hospital.

DATA AND ANALYSES

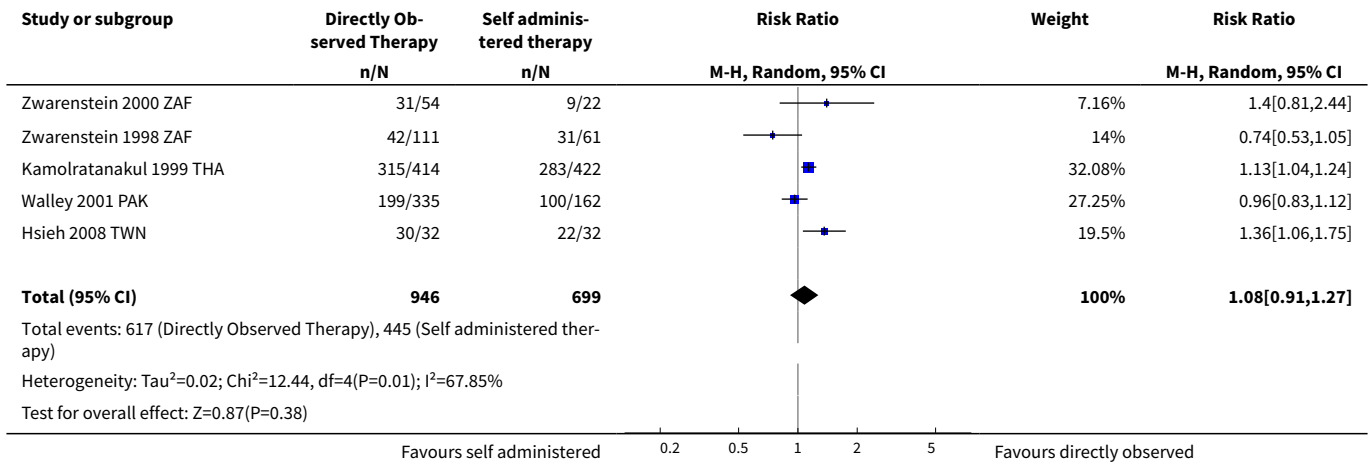
Comparison 1. Directly observed versus self-administered

Outcome or subgroup title	No. of studies	No. of participants	Statistical method	Effect size
1 Cure (negative sputum smear in last month of Rx in patients +ve initially)	5	1645	Risk Ratio (M-H, Random, 95% CI)	1.08 [0.91, 1.27]
2 Cure (by intensity of monitoring in control group)	5	1645	Risk Ratio (M-H, Fixed, 95% CI)	1.07 [1.00, 1.15]
2.1 Monthly monitoring of patients in self administered group	2	900	Risk Ratio (M-H, Fixed, 95% CI)	1.15 [1.06, 1.25]
2.2 Once every two weeks monitoring of patients in self-administered group	1	497	Risk Ratio (M-H, Fixed, 95% CI)	0.96 [0.83, 1.12]
2.3 Weekly monitoring of patients in self-administered group	2	248	Risk Ratio (M-H, Fixed, 95% CI)	0.90 [0.68, 1.21]
3 Treatment completion (both with smear sputum test at end and those without)	6	1839	Risk Ratio (M-H, Random, 95% CI)	1.07 [0.96, 1.19]
4 Treatment completion (grouped by frequency of monitoring in the self-administered therapy group)	6	1839	Risk Ratio (M-H, Random, 95% CI)	1.07 [0.96, 1.19]
4.1 Monthly monitoring of self-administered treatment	3	1073	Risk Ratio (M-H, Random, 95% CI)	1.12 [0.95, 1.31]
4.2 Once every two weeks monitoring of self-administered treatment	1	497	Risk Ratio (M-H, Random, 95% CI)	0.99 [0.87, 1.14]

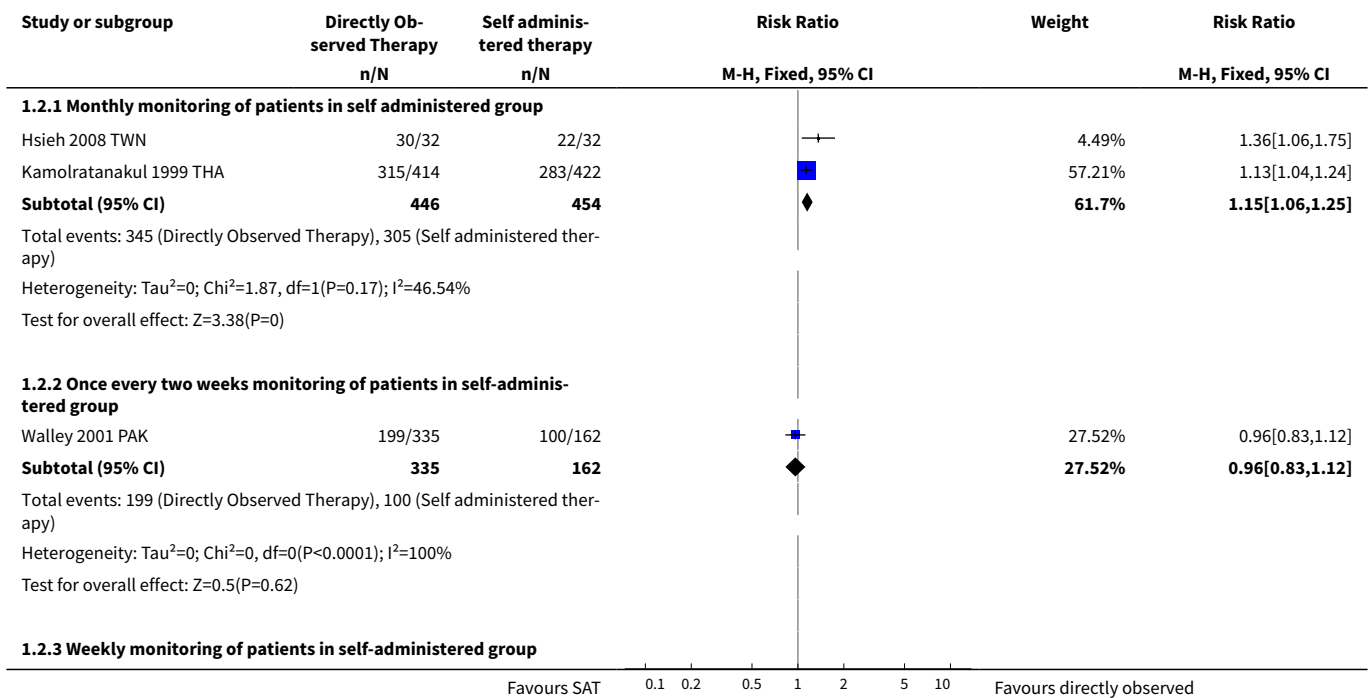
Directly observed therapy for treating tuberculosis (Review)

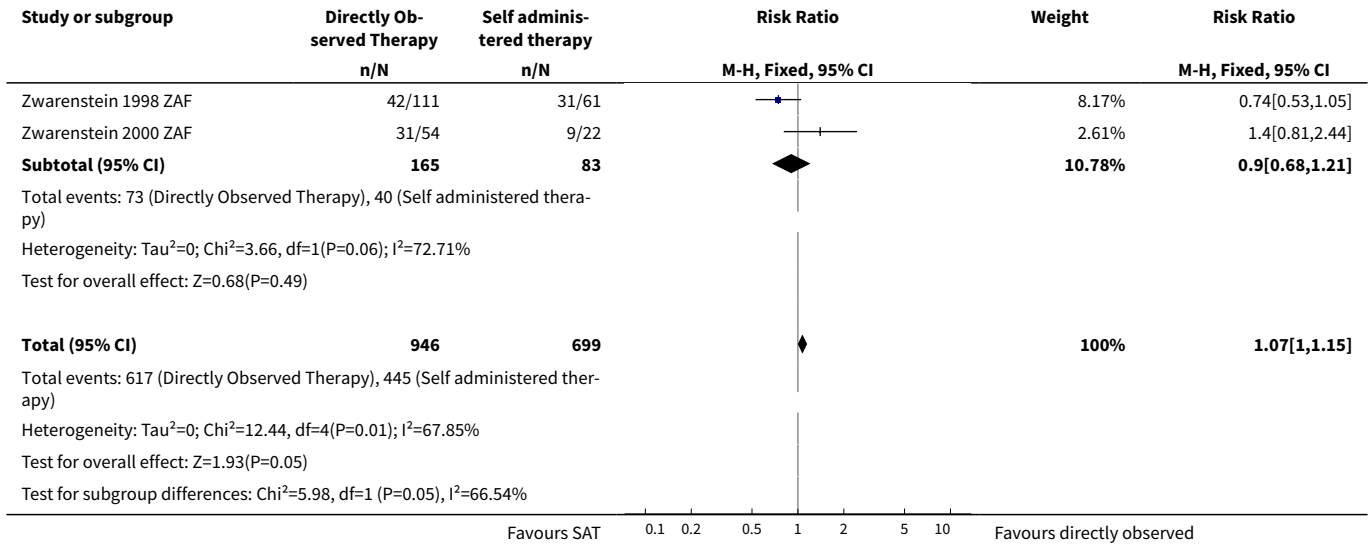
Outcome or subgroup title	No. of studies	No. of participants	Statistical method	Effect size
4.3 Weekly monitoring of self-administered treatment	2	269	Risk Ratio (M-H, Random, 95% CI)	1.04 [0.74, 1.46]

Analysis 1.1. Comparison 1 Directly observed versus self-administered, Outcome 1 Cure (negative sputum smear in last month of Rx in patients +ve initially).

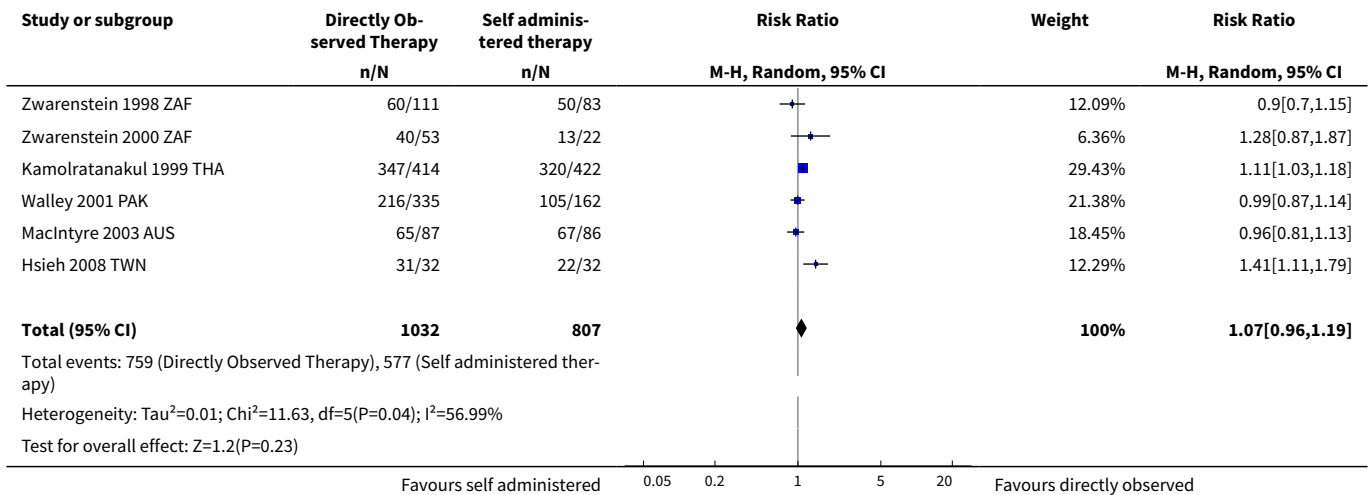


Analysis 1.2. Comparison 1 Directly observed versus self-administered, Outcome 2 Cure (by intensity of monitoring in control group).

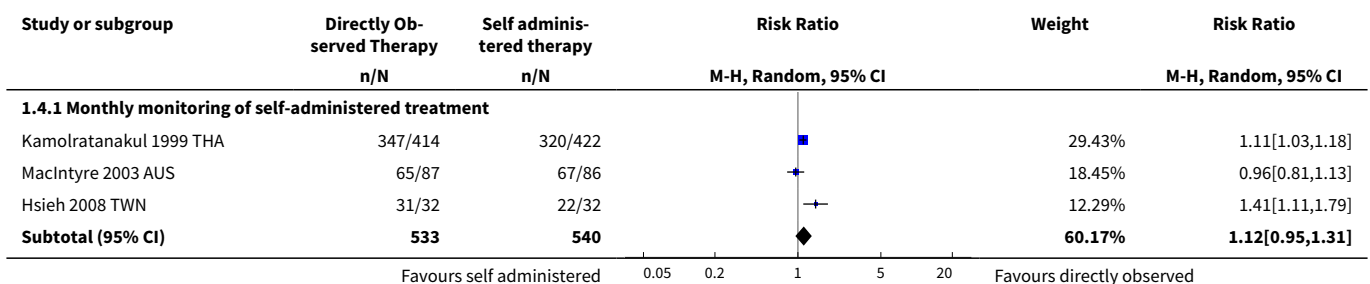


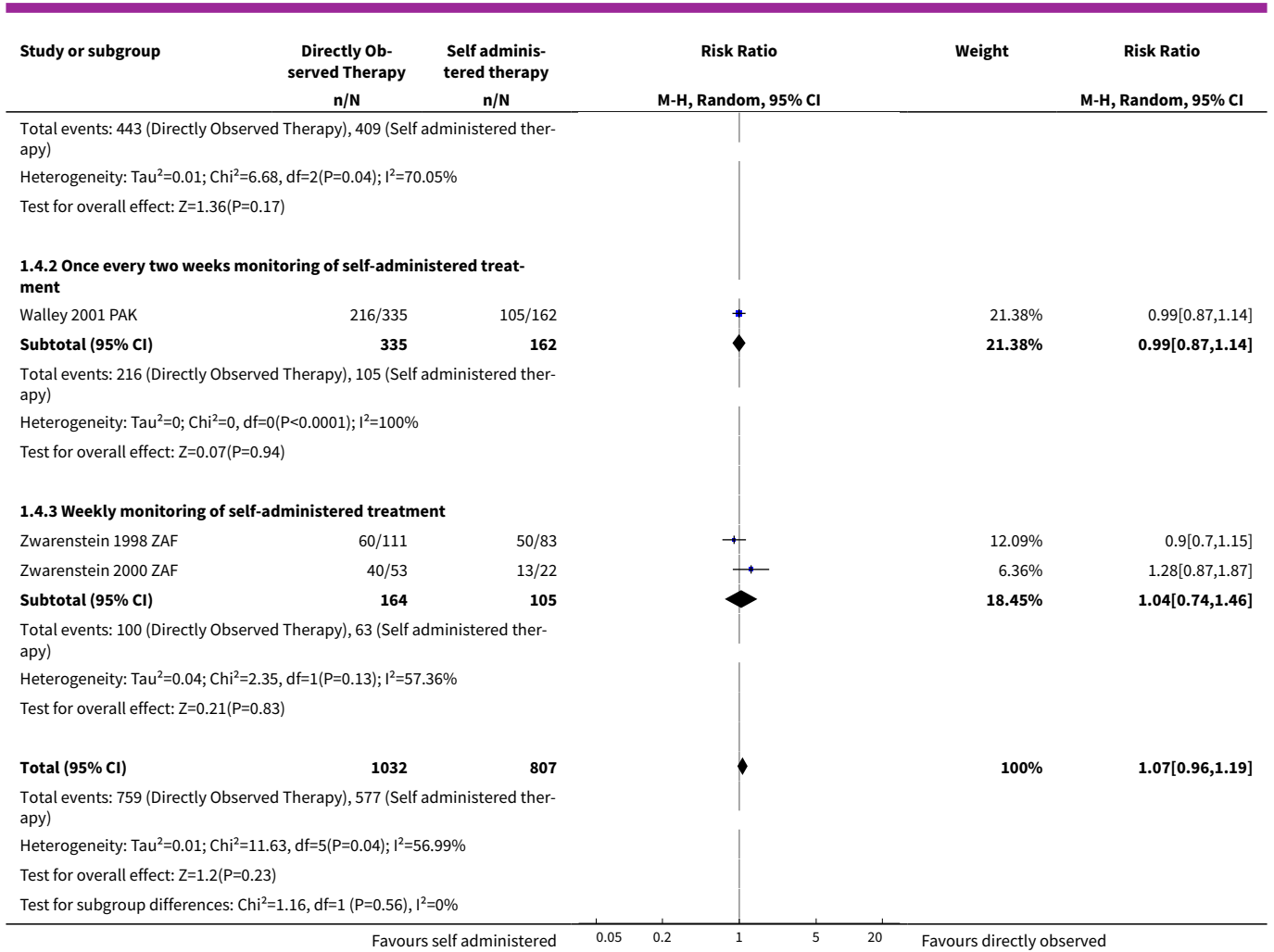


Analysis 1.3. Comparison 1 Directly observed versus self-administered, Outcome 3 Treatment completion (both with smear sputum test at end and those without).



Analysis 1.4. Comparison 1 Directly observed versus self-administered, Outcome 4 Treatment completion (grouped by frequency of monitoring in the self-administered therapy group).

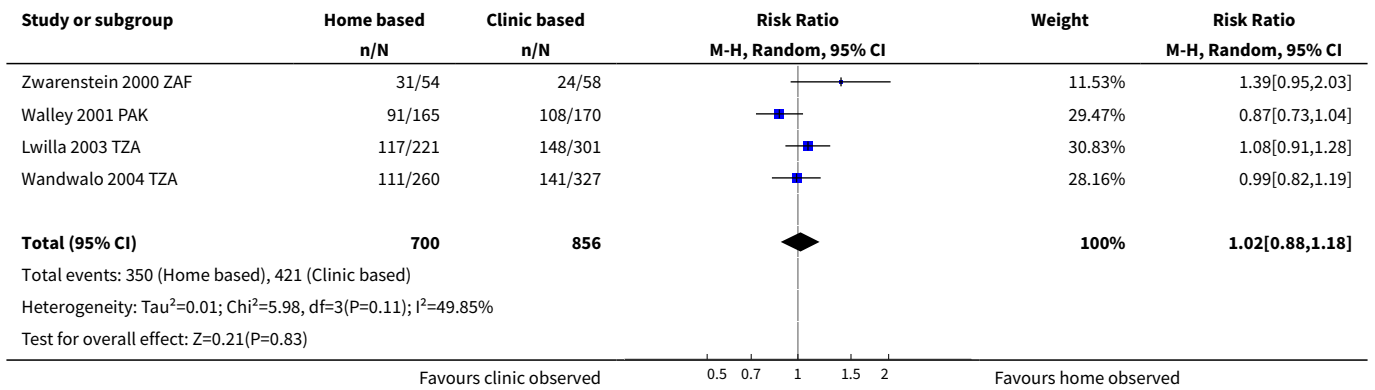




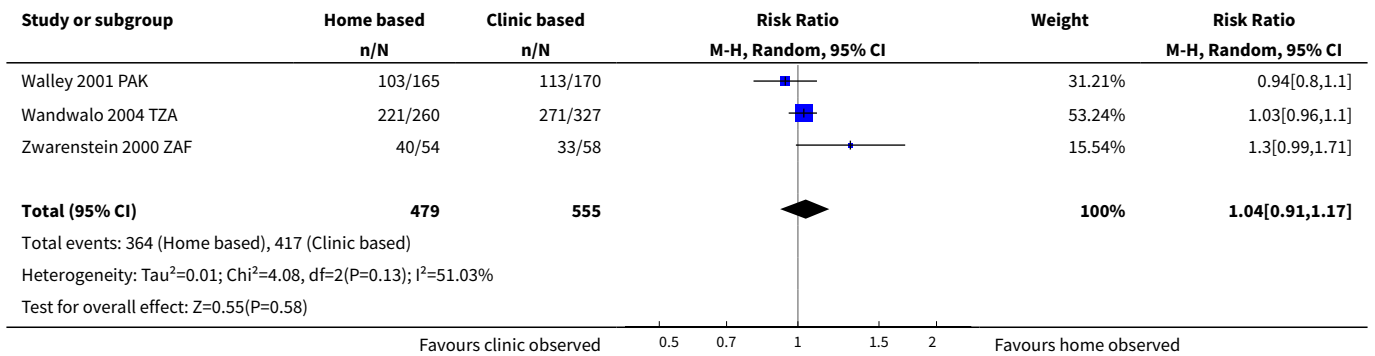
Comparison 2. Home observed versus clinic observed

Outcome or subgroup title	No. of studies	No. of participants	Statistical method	Effect size
1 Cure (having a negative sputum smear test in the last month of treatment having been smear-positive initially)	4	1556	Risk Ratio (M-H, Random, 95% CI)	1.02 [0.88, 1.18]
2 Treatment completion (both with smear sputum test at end and those without)	3	1034	Risk Ratio (M-H, Random, 95% CI)	1.04 [0.91, 1.17]
3 Cure (stratified by intensity of observation)	4	1556	Risk Ratio (M-H, Fixed, 95% CI)	1.01 [0.91, 1.11]
3.1 DOT (Intense supervision of observer)	1	522	Risk Ratio (M-H, Fixed, 95% CI)	1.08 [0.91, 1.28]
3.2 Routine supervision of DOT	3	1034	Risk Ratio (M-H, Fixed, 95% CI)	0.98 [0.86, 1.10]

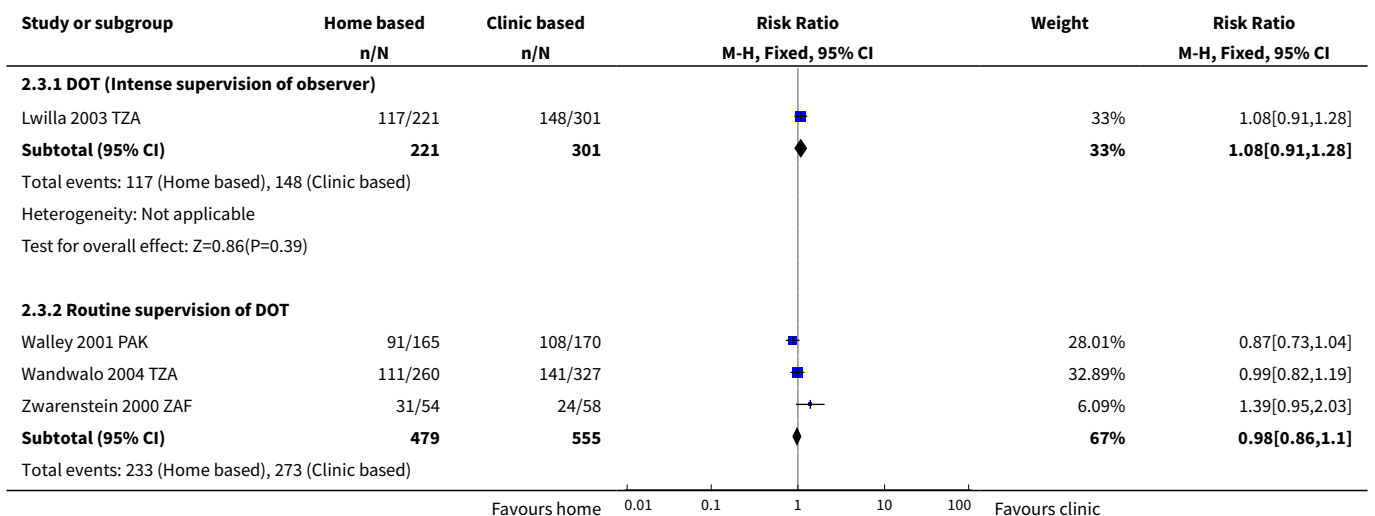
Analysis 2.1. Comparison 2 Home observed versus clinic observed, Outcome 1 Cure (having a negative sputum smear test in the last month of treatment having been smear-positive initially).

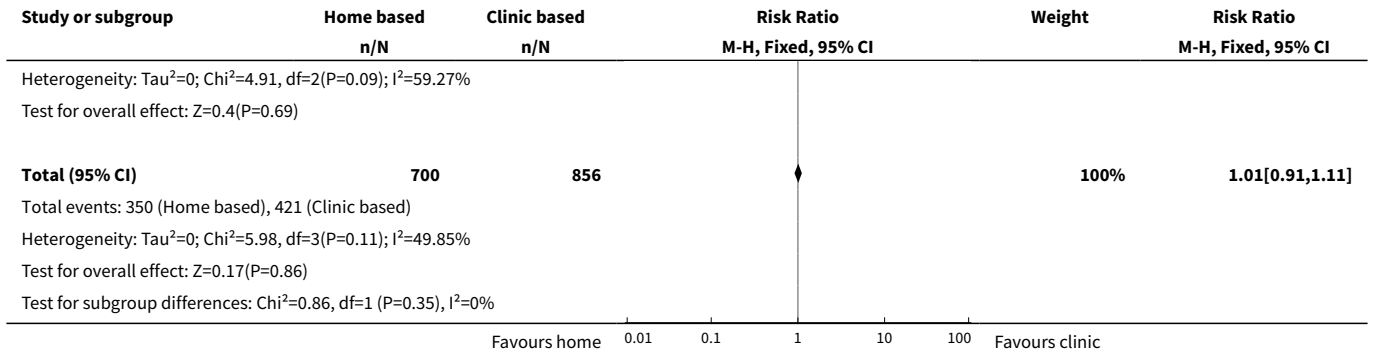


Analysis 2.2. Comparison 2 Home observed versus clinic observed, Outcome 2 Treatment completion (both with smear sputum test at end and those without).



Analysis 2.3. Comparison 2 Home observed versus clinic observed, Outcome 3 Cure (stratified by intensity of observation).

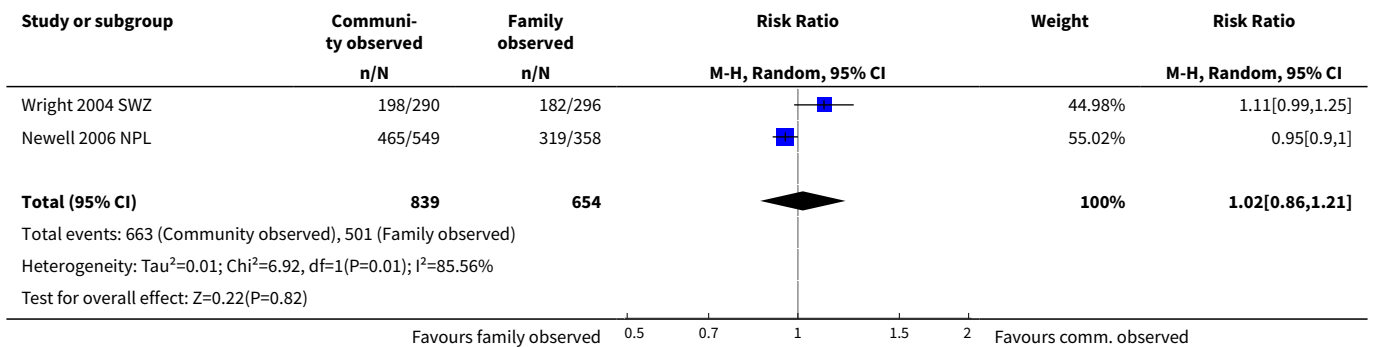




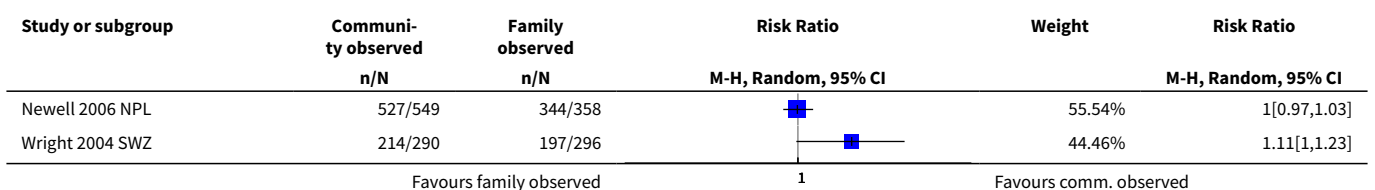
Comparison 3. Community observed vs family observed

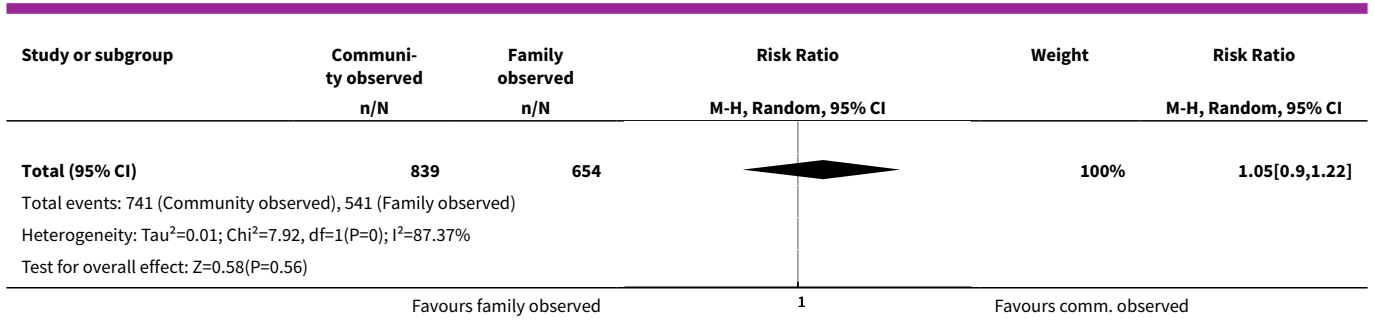
Outcome or subgroup title	No. of studies	No. of participants	Statistical method	Effect size
1 Cure (having a negative sputum smear test in the last month of treatment having been smear-positive initially)	2	1493	Risk Ratio (M-H, Random, 95% CI)	1.02 [0.86, 1.21]
2 Treatment completion (both with smear sputum test at end and those without)	2	1493	Risk Ratio (M-H, Random, 95% CI)	1.05 [0.90, 1.22]

Analysis 3.1. Comparison 3 Community observed vs family observed, Outcome 1 Cure (having a negative sputum smear test in the last month of treatment having been smear-positive initially).



Analysis 3.2. Comparison 3 Community observed vs family observed, Outcome 2 Treatment completion (both with smear sputum test at end and those without).

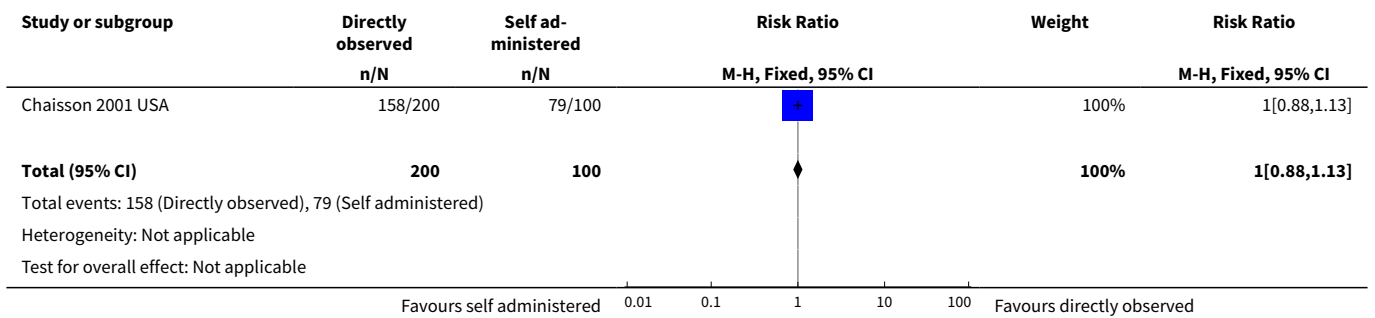




Comparison 4. Injecting drug users

Outcome or subgroup title	No. of studies	No. of participants	Statistical method	Effect size
1 Treatment completion	1	300	Risk Ratio (M-H, Fixed, 95% CI)	1.0 [0.88, 1.13]

Analysis 4.1. Comparison 4 Injecting drug users, Outcome 1 Treatment completion.



ADDITIONAL TABLES

Table 1. Summary of interventions in trials of DOT versus self-administered

Trial ID	DOT		Self administered therapy						
	Who observed?	Where?	How often?		Adherence recorded at each contact	Cure	Frequency of contact with health service	Adherence recorded at each contact	Cure
			Intensive phase	Consolidation phase					
Zwarenstein 1998 ZAF	Nurses	Clinic	5 times per week	3 times per week	Yes	38% (42/111)	Weekly	Yes	51% (31/61)
Zwarenstein 2000 ZAF	Nurse	Clinic	5 times per week	3 times per week	Yes	57% (31/54)	Weekly	Yes	41% (9/22)
	Lay health worker	Lay health workers home							
Kamolratanakul 1999 THA 1	Healthcare worker	Clinic	Daily	Daily	Yes	76% (315/414)	Monthly	Unclear	67% (283/422)
	Community health worker	Home	Daily	Daily					
	Family member	Home	Daily	Daily					
Walley 2001 PAK	Healthcare worker	Clinic	6 times per week	2 times per month	Yes	59% (199/335)	Every two weeks	Unclear	62% (100/162)
	Community health worker	Home							
	Family member	Home	Daily	Daily					
MacIntyre 2003 AUS 2	Family member	Home	Daily	Daily	Yes	Not reported	Monthly	Yes	Not reported
Hsieh 2008 TWN 3	Case manager or	Hospital	Daily	Once per week	Yes	94% (30/32)	Monthly un-scheduled visit	Yes	69% (22/32)
	Hospital care								

¹In [Kamolratanakul 1999 THA](#) patients could choose which observer they preferred and there a more intense supervision of observers in the intensive phase.

²In [MacIntyre 2003 AUS](#) nurses made weekly calls to the patients who were observed by a family member.

³In [Hsieh 2008 TWN](#) the case manager directly supervised medicine intake for first two months (Intensive phase), then self-administration with weekly unscheduled visit.

Table 2. Interventions comparing home versus clinic direct observation

Trial ID	DOT at patient's home				DOT at clinic				
	Who observed?	How often?		Supervision of observer	Cure	Who observed?	How often?		Cure
		Intensive phase	Consolidation phase				Intensive phase	Consolidation phase	
Walley 2001 PAK ¹	Family member	Daily	Not described	Observers collected drugs from the clinic every 2 weeks	55% (91/165)	Health worker	6 times per week	Self-supervised	64% (108/170)
Wandwalo 2004 TZA ¹	Family member or former TB patient	Daily	Self-supervised	Observers collected drugs from clinic weekly and spot checks were conducted by health worker	43% (111/260)	Health worker	Daily	Self-supervised	43% (141/327)
Zwarenstein 2000 ZAF	Lay health worker ²	'Several times a week'	Not described	Observer collected drugs monthly	57% (31/54)	Health worker	5 times a week	3 times a week	41% (24/58)
Lwilla 2003 TZA ¹	Community volunteer	Daily	Self-supervised	Observer was visited every two weeks by the health worker and every month by the district co-ordinator ³	53% (117/221)	Health worker	Daily	Self-supervised	49% (148/301)

¹In [Lwilla 2003 TZA](#), [Walley 2001 PAK](#) and [Wandwalo 2004 TZA](#) observation was during the intensive phase, while in the clinic observation arm of [Zwarenstein 2000 ZAF](#) it continued in the consolidated phase.

²In [Zwarenstein 2000 ZAF](#) the observation took place in the lay health worker's home, not the patient's home.

³In [Lwilla 2003 TZA](#) there was additional supervision by the district coordinator.

Table 3. Interventions comparing family-administered DOT versus community health worker DOT

Trial ID	Who observed?	Where?	How often?		Additional intervention	Who observed?	Where?	How often?	
			Intensive phase	Consolidation phase				Intensive phase	Consolidation phase
Newell 2006 NPL	Family member	Patient's home	Daily	Daily	Drugs supplied to supervisor every week	Community health worker	Patient's home ¹	Daily	Daily

Table 3. Interventions comparing family-administered DOT versus community health worker DOT (Continued)

Wright 2004 SWZ	Family member	Patient's home	Daily	Daily	Patient reviewed at the diagnostic centre once per month Recorded in a patient adherence card	Community health worker	Community health worker's home	Daily	Daily
----------------------------	---------------	----------------	-------	-------	--	-------------------------	--------------------------------	-------	-------

¹In [Newell 2006 NPL](#) the community health worker mainly visited the patients at their homes but occasionally the patients came to the health worker's home.

APPENDICES

Appendix 1. Search methods: detailed search strategies

Search set	CIDG SR ^a	CENTRAL	MEDLINE ^b	EMBASE ^b	LILACS ^b
1	tuberculosis	tuberculosis	tuberculosis	tuberculosis	tuberculosis
2	DOT*	PATIENT COMPLIANCE	PATIENT COMPLIANCE	PATIENT COMPLIANCE	DOT*
3	directly observed therapy	PATIENT PARTICIPATION	PATIENT PARTICIPATION	PATIENT MONITORING	supervision
4	2 or 3	patient monitoring	MOTIVATION	DOT\$	2 or 3
5	1 and 4	MOTIVATION	DECISION SUPPORT TECHNIQUES	directly observed therapy	1 and 4
6	—	DECISION SUPPORT TECHNIQUES	DOT*	compliance	—
7	—	DOT*	directly observed therapy	motivation	—
8	—	directly observed therapy	compliance	patient\$	—
9	—	compliance	patient*	defaulter\$	—
10	—	defaulter*	defaulter*	adheren\$	—
11	—	adheren*	adheren*	supervis\$	—
12	—	supervision*	supervis*	2-11/or	—
13	—	2-12/or	2-12/or	1 and 12	—
14	—	1 and 13	1 and 13	Limit 13 to human	—
15	—	—	Limit 14 to human	—	—

^aCIDG Specialized Register.

^bSearch terms used in combination with the search strategy for retrieving trials developed by Cochrane (Higgins 2011); upper case: MeSH or EMTREE heading; lower case: free text term.

WHAT'S NEW

Date	Event	Description
13 May 2015	New search has been performed	We added a trial and a table documenting in detail the inputs to the intervention and control groups. Also, we constructed 'Sum-

Directly observed therapy for treating tuberculosis (Review)

Copyright © 2015 The Authors. Cochrane Database of Systematic Reviews published by John Wiley & Sons, Ltd. on behalf of The Cochrane Collaboration.

Date	Event	Description
		mary of findings' tables and carried out additional analyses investigating possible effects of confounding by intense health worker contacts. We rewrote the review and conclusions.
13 May 2015	New citation required but conclusions have not changed	One trial was added and summary of findings tables were constructed.

HISTORY

Protocol first published: Issue 4, 2001

Review first published: Issue 4, 2001

Date	Event	Description
11 August 2011	New search has been performed	Categorised as Current question - no update intended (results conclusive). See "Published notes" section for details
10 August 2011	Amended	Pilot classification system added; explanation provided in "published notes" section
19 September 2008	Amended	Converted to new review format with minor editing.
13 August 2007	New citation required and conclusions have changed	2007, Issue 4: One new trial included (Newell 2006 NPL). Also added references to new tuberculosis adherence reviews in the 'Background' section and reworded objectives to clarify that the review encompasses comparisons between different types of directly observed therapy.
15 February 2006	Amended	2006, Issue 2 (Volmink 2006): Four new trials included (Lwilla 2003 TZA ; MacIntyre 2003 AUS ; Wandwalo 2004 TZA ; Wright 2004 SWZ).
19 November 2003	New citation required and conclusions have changed	2003, Issue 1: Two trials added (Chaisson 2001 USA ; Malotte 2001 USAa).
8 August 2001	New citation required and major changes	2001, Issue 4 (Volmink 2001): first version of this review on directly observed therapy. 2000, Issue 4 (Volmink 2000a): original review split into a series of Cochrane Reviews, each focusing on particular intervention promotion strategies, such as directly observed therapy in this review. 1997, Issue 2: review first published as 'Interventions for promoting adherence to tuberculosis management'.

CONTRIBUTIONS OF AUTHORS

Jimmy Volmink and Paul Garner carried out the first edition of this Cochrane Review ([Volmink 2001](#)) and review updates ([Volmink 2003](#); [Volmink 2006](#); [Volmink 2007](#)). Jamlick Karumbi performed this review update, assisted by Paul Garner. All review authors reviewed and approved the final manuscript.

Directly observed therapy for treating tuberculosis (Review)

Copyright © 2015 The Authors. Cochrane Database of Systematic Reviews published by John Wiley & Sons, Ltd. on behalf of The Cochrane Collaboration.

DECLARATIONS OF INTEREST

As a result of the earlier editions of this review from the mid 1990s, PG has become recognised and associated with the continued debate about whether DOT should be central to national programmes in low- and middle-income countries.

SOURCES OF SUPPORT

Internal sources

- South African Medical Research Council, South Africa.
- Liverpool School of Tropical Medicine, UK.

External sources

- Department for International Development, UK.

INDEX TERMS

Medical Subject Headings (MeSH)

*Directly Observed Therapy; *Medication Adherence; Antitubercular Agents [*therapeutic use]; Family; Health Personnel; Randomized Controlled Trials as Topic; Self Administration; Treatment Outcome; Tuberculosis, Pulmonary [*drug therapy]

MeSH check words

Humans