



## OPEN

# Noninvasive fractal biomarker of clock neurotransmitter disturbance in humans with dementia

Kun Hu<sup>1,2,6</sup>, David G. Harper<sup>3</sup>, Steven A. Shea<sup>1,2,4</sup>, Edward G. Stopa<sup>5</sup> & Frank A. J. L. Scheer<sup>1,2</sup>

<sup>1</sup>Medical Biodynamics Program, Division of Sleep Medicine, Brigham and Women's Hospital, Harvard Medical School, Boston, MA 02115, United States, <sup>2</sup>Medical Chronobiology Program, Division of Sleep Medicine, Brigham and Women's Hospital, Harvard Medical School, Boston, MA 02115, United States, <sup>3</sup>Department of Psychiatry, McLean Hospital, Harvard Medical School, Belmont, MA 02478, United States, <sup>4</sup>Center for Research on Occupational and Environmental Toxicology, Oregon Health & Science University, Portland, OR 97239, United States, <sup>5</sup>Departments of Pathology and Neurosurgery, The Warren Alpert Medical School, Brown University, Providence, RI 02912, United States, <sup>6</sup>Center for Dynamical Biomarkers and Translational Medicine, National Central University, Chungli, 32054, Taiwan.

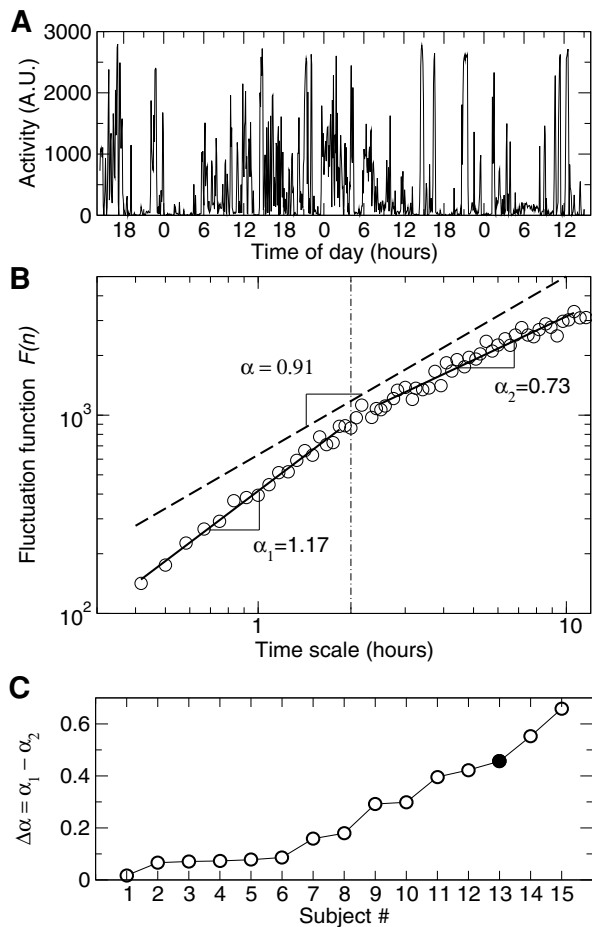
Received  
3 April 2013Accepted  
3 July 2013Published  
18 July 2013

Correspondence and requests for materials should be addressed to K.H. (khu@bics.bwh.harvard.edu)

**Human motor activity has a robust, intrinsic fractal structure with similar patterns from minutes to hours. The fractal activity patterns appear to be physiologically important because the patterns persist under different environmental conditions but are significantly altered/reduced with aging and Alzheimer's disease (AD). Here, we report that dementia patients, known to have disrupted circadian rhythmicity, also have disrupted fractal activity patterns and that the disruption is more pronounced in patients with more amyloid plaques (a marker of AD severity). Moreover, the degree of fractal activity disruption is strongly associated with vasopressinergic and neurotensinergic neurons (two major circadian neurotransmitters) in postmortem suprachiasmatic nucleus (SCN), and can better predict changes of the two neurotransmitters than traditional circadian measures. These findings suggest that the SCN impacts human activity regulation at multiple time scales and that disrupted fractal activity may serve as a non-invasive biomarker of SCN neurodegeneration in dementia.**

**A**ging and dementia are associated with disturbances in sleep and daily activity rhythms<sup>1–3</sup> that are the main reason for the institutionalization of elderly dementia patients. Pathological mechanisms underlying these behavioral disturbances are not fully understood. One possible mechanism involves neurodegenerative changes in the central circadian pacemaker (suprachiasmatic nucleus: SCN) as supported by both human and animal studies<sup>4–7</sup>. SCN dysfunction can disrupt circadian rhythms of behavior and physiology and their synchrony with day-night/light-dark cycles<sup>8</sup>. Non-invasive and reliable assessment of SCN dysfunction is still a challenge in human studies. Traditional approaches based on circadian rhythmicity of behavior and core body temperature can be significantly complicated by many environmental influences such as from housing and light conditions, nursing home schedules for feeding and sleep, and interactions between patients and caregivers. New approaches that are not confounded by these masking effects are needed to define the role of SCN dysfunction in the progression of dementia.

Fractal fluctuations — similar temporal structures at different time scales — are observed in many neurophysiological signals, including motor and brain activity<sup>9,10</sup>. Such dynamic patterns are robust in healthy physiological systems but are significantly altered/reduced with aging and disease<sup>11</sup>. Based on experimental and theoretical physics research, fractal patterns emerge as an integrated behavior on a system level, reflecting networks of elaborate feedback processes that interact across multiple control components and across a wide range of temporal scales<sup>12</sup>. From lesion studies in rats, we previously found that an intact SCN is necessary for the maintenance of fractal activity patterns<sup>13</sup>. In humans we showed fractal activity regulation is reduced with aging and Alzheimer's disease (AD)<sup>14,15</sup> that are also accompanied by neuroanatomical changes in the SCN<sup>4,16</sup>. Thus, we hypothesized that SCN degeneration is responsible for the disrupted fractal activity regulation and that the disruption increases as AD progresses. To test these hypotheses, we analyzed existing antemortem actigraphy records (Fig. 1A) of 20 dementia patients (15 AD) and related these results to the number of vasopressinergic and neurotensinergic neurons in postmortem SCN tissue, and to occipital cortical amyloid plaque burden (a marker of AD severity) that were all taken from these same patients<sup>17</sup>. Moreover, we examined whether the use of a measure of fractal disruption can improve the prediction of the changes in the SCN.



**Figure 1 | Alterations of fractal correlations in motor activity fluctuations in dementia patients.** (A) 72-hour activity recording of a representative dementia patient. (B) Detrended fluctuation function  $F(n)$  of the activity signal shown in (a).  $F(n)$  displayed different power-law behavior with different scaling exponent,  $\alpha_1$  and  $\alpha_2$ , at time scales smaller than and larger than  $\sim 2$  hours (indicated by dotted dashed line). For comparison,  $F(n)$  of young adults as observed in a previous study<sup>13</sup> was also plotted (dashed black line). (C) Difference between  $\alpha_1$  and  $\alpha_2$  for all subjects (except for 5 individuals with no  $\alpha_2$  due to many missing data points in their recordings). The subject # 13 (filled circle) is the patient whose data are shown in (A) and (B).

## Results

**Altered fractal activity patterns in dementia.** To assess fractal patterns in activity fluctuations, we performed detrended fluctuation analysis (DFA)<sup>18</sup> which quantifies fluctuation amplitudes  $F(n)$  across different time scales  $n$ . Using the DFA, we previously found that activity fluctuations of healthy young individuals possess robust fractal correlations as characterized by a power-law function  $F(n) \sim n^\alpha$ , with the scaling exponent  $\alpha \sim 0.9$  (Fig. 1B)<sup>15</sup>. Here we found that the fluctuation function of dementia patients generally deviated from a simple power-law form, displaying different patterns in two time-scale regions (Fig. 1B). At time scales  $n < \sim 2$  hours, the fluctuation function showed a power-law form with the exponent  $\alpha_1 = 1.13 \pm 0.03$  (SE). At time scales  $n > \sim 2$  hours, the fluctuation function also showed a power-law behavior but the exponent  $\alpha_2$  (the exponent  $\alpha$  at time scales  $> \sim 2$  hours) was smaller than  $\alpha_1$  (the exponent  $\alpha$  at time scales  $< \sim 2$  hours) (Fig. 1B to C). The difference in fractal correlations between the two regions indicates an overall reduction of fractal regulation. Thus, we used the difference between the two exponents ( $\Delta\alpha = \alpha_1 - \alpha_2$ ; mean  $\pm$  SE:  $0.25 \pm 0.05$ ) to quantify the

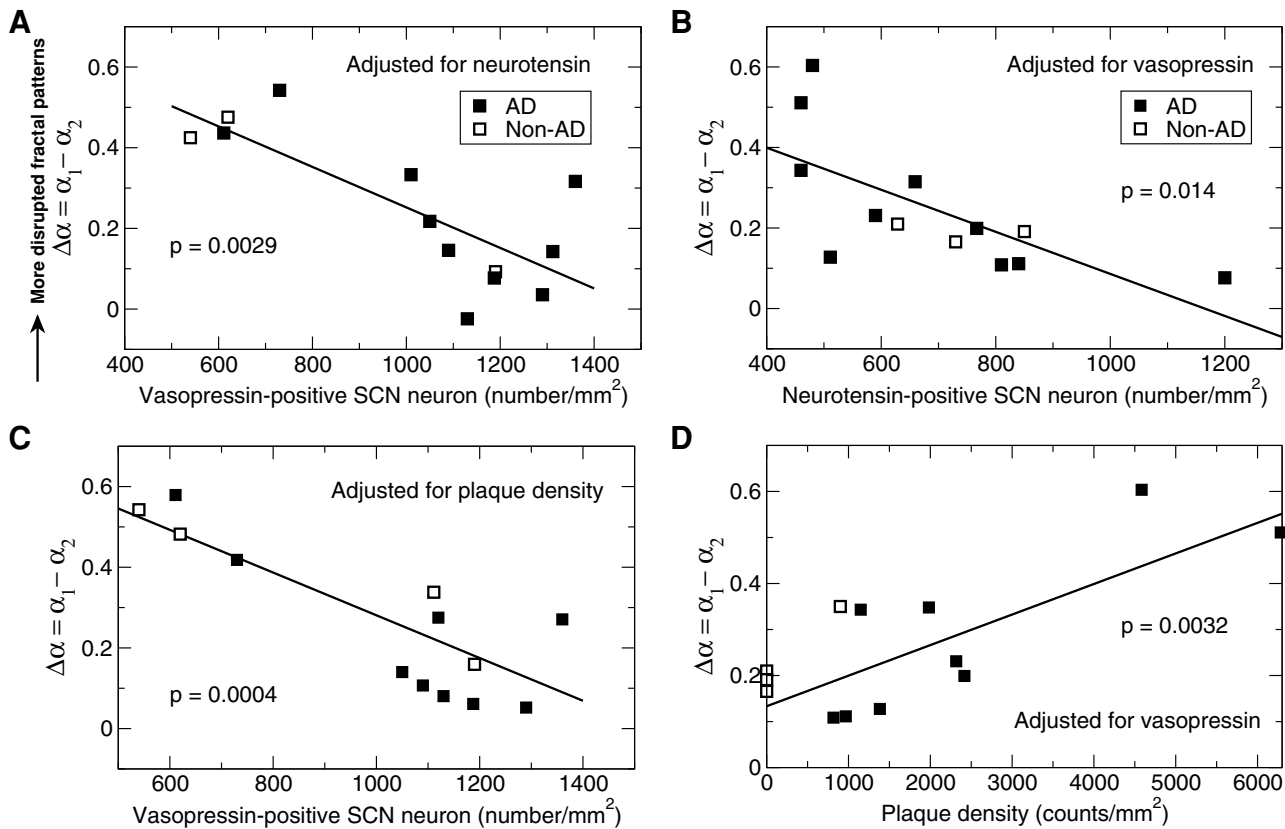
degree of disturbed fractal regulation: a larger  $\Delta\alpha$  indicates more disrupted fractal regulation.

**Associations between fractal activity disruption and circadian neurotransmitters.** Next, we tested whether the disturbed fractal activity regulation in these dementia patients reflected SCN dysfunction. We quantified SCN neurons containing vasopressin or neurotensin that were obtained from postmortem hypothalamic tissue samples of these patients<sup>17</sup>. We found that  $\Delta\alpha$  was negatively correlated with the number of neurons containing the two major SCN neurotransmitters (vasopressin:  $p = 0.0029$ ; neurotensin:  $p = 0.014$ ) (Fig. 2A, B; Model 1 in Table 1). Together, the two circadian neurotransmitters accounted for 72% of variation in  $\Delta\alpha$ . These relationships between disrupted fractal activity and SCN neurotransmitters remained after adjusting for age, latency between behavioral activity recording and time of death (mean  $\pm$  SE:  $0.57 \pm 0.13$  years), and daily rhythm of neurotransmitter content (see Methods).

**Effect of severity of Alzheimer's disease.** We then tested whether disturbed fractal activity regulation was specifically related to neurodegenerative changes in the SCN associated with dementia, independent of AD severity *per se*. To estimate AD severity, we measured amyloid plaque density in the occipital cortex<sup>19</sup>. After adjusting for the effect of plaque density, we found an even more significant association between fractal disruption and vasopressin cell number in the SCN (Fig. 2C, Model 2 in Table 1). This result indicates that the association between vasopressin and fractal disruption is independent of AD severity. However, the association between neurotensin and fractal activity control was related to AD severity because this association became not significant ( $p > 0.3$ ) after controlling for plaque density and vasopressin. Furthermore, after accounting for the effect of vasopressin, we also observed a positive correlation between  $\Delta\alpha$  and plaque density ( $p = 0.0032$ ) (Fig. 2D), suggesting that patients with more severe AD had more disrupted fractal regulation.

**Prediction for changes of neurotransmitters in the SCN.** We further examined how the altered fractal activity patterns can help to predict changes in circadian neurotransmitters and how such a fractal marker compares to more traditional markers. We considered three traditional circadian measures: (1) the circadian amplitude of core body temperature:  $0.32 \pm 0.03$  (SE)  $^\circ\text{C}$ , range:  $0.11 - 0.72^\circ\text{C}$ ; (2) the circadian amplitude of motor activity:  $116 \pm 25$ , range:  $1.7 - 427$ ; and (3) intraday variability in motor activity:  $1.15 \pm 0.08$ , range:  $0.42 - 1.82$ . The regression model with the three circadian measures accounted for 38% of variation in vasopressin (Model 3a in Table 1:  $R^2 = 0.38$ ,  $p = 0.058$ ,  $\text{AICc} = 90.8$ ). Adding  $\Delta\alpha$  to the model significantly improved the prediction to 66% (Model 3b in Table 1:  $R^2 = 0.66$ ,  $p = 0.032$ ,  $\text{AICc} = 75.1$ ). The reduced  $\text{AICc}$  indicated a better model fit when  $\Delta\alpha$  was added to the model (adjusting for the number of factors in the model). The effect of  $\Delta\alpha$  on a model in predicting neurotensin was even larger. Without including  $\Delta\alpha$ , the three circadian measures together could account for only 18% of variation in neurotensin (Model 4a in Table 1). With  $\Delta\alpha$ , 77% of variation in neurotensin could be explained (Model 4b in Table 1). In both models (for vasopressin and neurotensin, respectively),  $\Delta\alpha$  was the single most significant predicting factor.

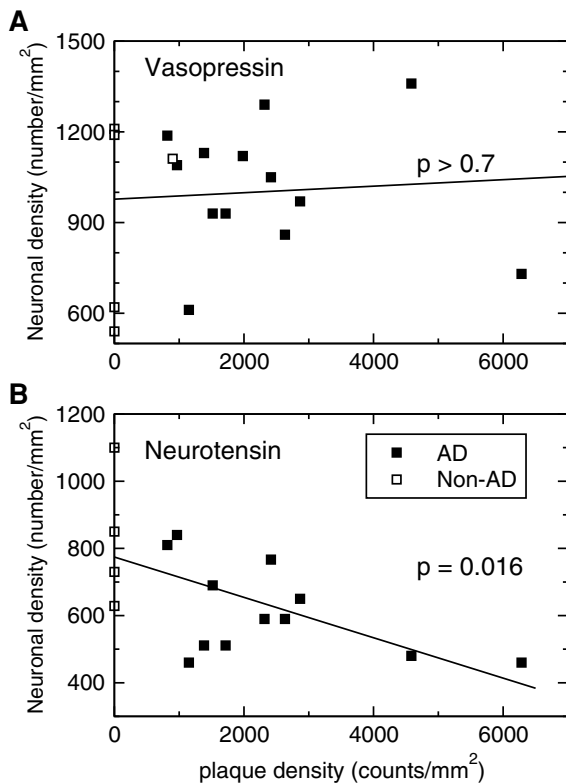
In addition, the nadir of cosinor fit of temperature was at 7:55AM  $\pm 0.6$  hours (SE) in these dementia patients, delayed for  $\sim 5$  hours as compared to the elderly controls (nadir at  $\sim 3\text{AM}$ ) as previously reported<sup>20–23</sup>. However, adding the temperature nadir did not improve the fits of the models for vasopressin and neurotensin in these patients because this circadian phase measure was not associated with the two neurotransmitters (both  $p > 0.65$ ).



**Figure 2 | More disrupted fractal activity correlations in dementia patients with more reduced neurotransmitter in the SCN.** (A)  $\Delta\alpha = \alpha_1 - \alpha_2$  was negatively correlated with the number of vasopressin-positive SCN neurons after adjusting for the effect of the number of neurotensin-positive SCN neurons. (B)  $\Delta\alpha$  was correlated with the number of neurotensin-positive SCN neurons after adjusting for the effect of the number of vasopressin-positive SCN neurons. Results in (A) and (B) were obtained from 13 subjects with dementia (10 with AD) using a regression model in which the two SCN neurotransmitters (vasopressin and neurotensin) were included as two factors (See Model 1 in Table 1). (C)  $\alpha_1 - \alpha_2$  was correlated with the number of vasopressin-positive SCN neurons after adjusting for the effect of AD severity as characterized by the plaque density from occipital Bielschowsky stain. (D)  $\alpha_1 - \alpha_2$  was correlated with the AD severity after adjusted for the effect of the number of vasopressin-positive SCN neurons. Results in (C) and (D) were obtained from 13 subjects with dementia (9 with AD) using a regression model in which vasopressin neuronal density and plaque density were included as two factors (see Model 2 in Table 1).

**Table 1 | Specification of regression models for prediction of disrupted fractal activity regulation (Models 1 and 2) and SCN neurotransmitters (Models 3 and 4).**  $p_1$ : p values for models;  $p_2$ : p values for independent factors; AICc: corrected Akaike's information criterion value; ACBTR: amplitude of core body temperature rhythm, AMAR: amplitude of motor activity rhythm, IV: intraday variability

|                 | Response       | DFtotal | DFmodel | R <sup>2</sup> | $p_1$  | AICc  | Fixed Effects  | t Ratio | $p_2$  |
|-----------------|----------------|---------|---------|----------------|--------|-------|----------------|---------|--------|
| <b>Model 1</b>  | $\Delta\alpha$ | 12      | 2       | 0.72           | 0.0018 | -7.1  | vasopressin    | -3.92   | 0.0029 |
|                 |                |         |         |                |        |       | neurotensin    | -2.97   | 0.014  |
| <b>Model 2</b>  | $\Delta\alpha$ | 12      | 2       | 0.78           | 0.0005 | -11.6 | vasopressin    | -5.19   | 0.0004 |
|                 |                |         |         |                |        |       | plaque density | 3.86    | 0.0032 |
| <b>Model 3a</b> | vasopressin    | 18      | 3       | 0.38           | 0.058  | 90.8  | ACBTR          | -0.78   | 0.45   |
|                 |                |         |         |                |        |       | AMAR           | -1.60   | 0.13   |
|                 |                |         |         |                |        |       | IV             | -2.76   | 0.015  |
| <b>Model 3b</b> | vasopressin    | 13      | 4       | 0.66           | 0.032  | 75.1  | ACBTR          | -0.78   | 0.45   |
|                 |                |         |         |                |        |       | AMAR           | -1.26   | 0.24   |
|                 |                |         |         |                |        |       | IV             | -1.9    | 0.09   |
|                 |                |         |         |                |        |       | $\Delta\alpha$ | -2.42   | 0.039  |
| <b>Model 4a</b> | neurotensin    | 16      | 3       | 0.18           | 0.45   | 85.3  | ACBTR          | 1.28    | 0.22   |
|                 |                |         |         |                |        |       | AMAR           | 0.89    | 0.39   |
|                 |                |         |         |                |        |       | IV             | 0.58    | 0.57   |
| <b>Model 4b</b> | neurotensin    | 11      | 4       | 0.77           | 0.023  | 63.1  | ACBTR          | 0.40    | 0.70   |
|                 |                |         |         |                |        |       | AMAR           | 2.79    | 0.027  |
|                 |                |         |         |                |        |       | IV             | 2.96    | 0.021  |
|                 |                |         |         |                |        |       | $\Delta\alpha$ | -3.88   | 0.0061 |



**Figure 3** | Association between neurotransmitter content in the SCN and amyloid plaque density in the occipital cortex. Only neurotensin neuronal density (not assessed in 1 AD and 1 frontotemporal dementia patients) was significantly associated with plaque density ( $R^2 = 0.35$ ,  $p = 0.016$ ), i.e., patients with more plaques had fewer neurotensin-positive SCN neurons.

## Discussion

Fractal patterns are a robust, intrinsic characteristic of motor activity regulation in healthy young humans<sup>14,15</sup>. Similar to disrupted circadian rhythmicity, disrupted fractal activity patterns in dementia reflect behavioral disturbances in these patients. The positive association between the fractal disruption and AD severity indicates that complex behavioral organization deteriorates as AD progresses. The effect of AD severity on fractal regulation may be partially mediated through its influence on neurotensin because: (i) senile plaque formation associated with AD severity is thought to contribute to neurodegeneration and neurotransmitter changes in the SCN (and not the other way around); (ii) plaque density was correlated with neurotensin content ( $p = 0.016$ ) (Fig. 3); and (iii) the effect of neurotensin on  $\Delta\alpha$  became not significant ( $p > 0.3$ ) after controlling plaque density and vasopressin. Moreover, the strong correlation between the disrupted fractal activity and SCN neurotransmitters provides evidence that the SCN dysfunction underlies disturbed fractal regulation in dementia. It is worth noting that fractal activity patterns reveal a unique aspect of behavioral control at multiple time scales (i.e., dynamic properties of activity fluctuations from minutes to hours) that is different from and complementary to circadian rhythmicity<sup>24</sup>. Thus, the impact of the SCN dysfunction on fractal activity patterns also suggests a multiscale regulatory function of the human SCN.

Based on concepts of modern statistical physics and nonlinear dynamic theory, fractal activity patterns are more resilient to external influences (e.g., scheduled behavior and environmental conditions) that can significantly impact traditional measures such as mean, variation and rhythmicity of motor activity<sup>14,15,25</sup>. For instance, dementia patients in a nursing home may have regular daily schedule of interactions with caregivers. These scheduled events can induce

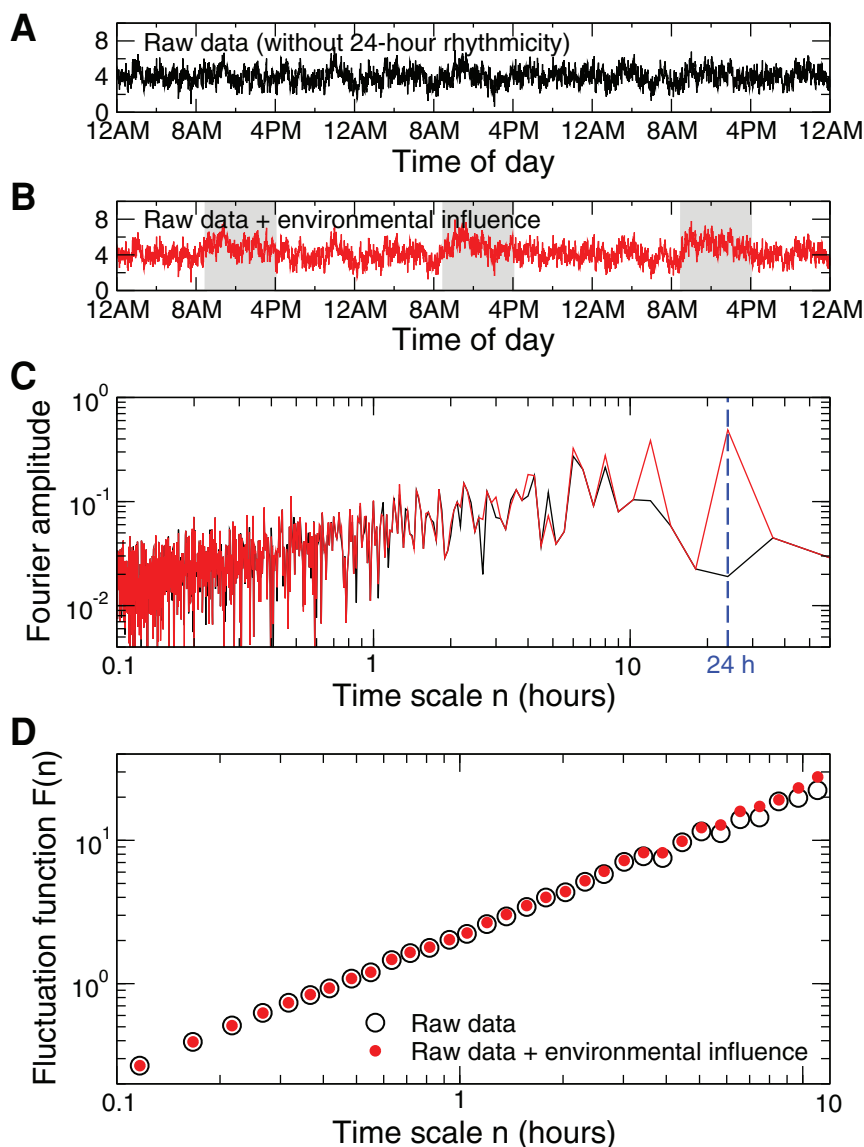
apparent 24-hour rhythmicity in activity fluctuations even though patients themselves may have abolished endogenous circadian control (Figure 4). In contrast, scheduled events have less impact on fractal patterns in activity fluctuations. Thus, fractal measures may better reflect intrinsic alterations in the circadian control network. Consistently, this study showed that fractal activity patterns are very sensitive to neuronal changes in the SCN. The single fractal measure increased the combined predictive power of three traditional circadian measures by  $\sim 1.7$  times for vasopressin, and by  $\sim 4.2$  times for neurotensin. These results do not refute the value of traditional circadian measures for the assessment of SCN dysfunction. Indeed both fractal and circadian measures clearly showed altered behavioral control in dementia and/or AD patients<sup>14,15,17</sup>.

Identifying and monitoring the SCN dysfunction and its associated behavioral disturbances are particularly important for dementia care. With an identified target (i.e., neuronal degeneration in the SCN), more efficient therapies and treatments may be designed to improve the quality of life of people with the disease. For instance, light and/or melatonin can be used to restore perturbed circadian rhythms of physiological functions (e.g., disrupted sleep, daily behavioral cycles, and cognition) that are associated with the SCN dysfunction<sup>26,27</sup>. Our results suggest that disrupted fractal activity may serve as a non-invasive, sensitive biomarker for SCN deterioration in dementia. However, without a comprehensive mechanistic understanding of fractal regulation and its degradation in dementia, interventions/treatments targeted at restoring the regulation in dementia patients are still not feasible at the current stage. Despite the relevance of the SCN to fractal activity patterns as indicated by this and previous studies<sup>4-7</sup>, the neurophysiological basis for fractal regulation is still elusive. One possible theory is related to the interactions between different physiological functions. To achieve an ideal system performance, maintaining circadian rhythmicity in behavior and physiology is important but may not be sufficient. An appropriate orchestration of circadian rhythms in different physiological processes (their phase relationship) is demanding and is believed to be the important functional role of the master circadian clock<sup>28</sup>. Can the involvement of the SCN in fractal regulation reflect the dynamic process of the SCN-enabled orchestration among many physiological functions? If confirmed, the theory should provide a specific neurophysiological basis for the widely accepted belief that fractal patterns in physiology indicates system integrity and flexibility<sup>11</sup>. Further studies are warranted to test this hypothesis and to determine the neural circuitry for fractal regulation.

This is a pilot study with a small sample size. In this study we only considered two major circadian neurotransmitters in humans, i.e., vasopressin and neurotensin. Another important circadian neurotransmitter in mammals is vasoactive intestinal peptide (VIP) that was not assessed in the human study. How the change in VIP affects fractal activity regulation should be examined in further studies. Furthermore, large-scale longitudinal studies are needed to determine the time course of fractal activity disruptions during the progression of dementia and to test whether fractal disruptions can serve as a diagnostic marker for the early onset of the disease process.

## Methods

**Subjects.** We utilized existing data from 20 male, dementia patients (62–80 years) including 15 with Alzheimer's Disease (AD), 4 with frontotemporal dementia, and 1 with dementia with Lewy bodies who were residing at the E. N. Rogers Memorial (ENRM) Veterans Administration (VA) Hospital Geriatric Research, Education and Clinical Center (GRECC) in Bedford, MA. All subjects were admitted with a diagnosis of possible or probable dementia disease<sup>17</sup>. Dementia (or AD) was confirmed after postmortem neuropathological diagnosis (see below). Among the 15 AD patients, there were three subjects with Braak stage 3–4 and eleven subjects with Braak stage 5–6 (Braak stage for one subject missing). The Institutional Review Boards of the McLean and ENRM VA Hospitals approved the protocol and informed consent for this study. Informed consent was obtained from the subject's next-of-kin in accordance with the VA's human subjects' research policies on surrogate consent.



**Figure 4** | Effects of scheduled daily events on assessments of circadian rhythmicity and fractal patterns. (A) Simulated 72-hour activity recording that possesses fractal correlations but no 24-h rhythm. (B) The same signal as shown in A except for an increased activity level between 9AM and 4PM that was used to simulate the environmental influence due scheduled daily events. (C) Fourier amplitudes of the signals shown in (A) and (B). (D) Detrended fluctuation function  $F(n)$  of the signals shown in (A) and (B). Daily events led to a significant 24-hour rhythm (C) but barely affected fractal patterns as revealed by detrended fluctuation analysis (D).

**Study procedure.** Details of the procedure were published previously<sup>17</sup>. Briefly, following provision of informed consent, physiological recordings were obtained every 6 months for the duration of the 3-year data collection portion of the study using a 72 hour data-collection protocol. All subjects were free from significant intercurrent illness and were taking no antipyretic medication for at least 24 hour prior to the time of physiological recording. Subjects were studied in their accustomed environment on the GRECC unit following standard ward routines. No effort was made to control light, food, nursing care, the patient's sleep schedule or any other masking influences during data collection. The age of patients at time of last study was  $69.5 \pm 1.5$  (SE) years. Upon death of the subjects, consent was obtained from the subjects' next-of-kin for autopsy and subsequent donation of their brains to the Alzheimer's Disease Research Center Brain Bank at the ENRM VA Hospital. Consent for this portion of the study was obtained independently without any linkage to the prior, physiological data collection. At time of death subjects' mean age was  $70.1 \pm 1.4$  (SE) years with a mean latency from last physiological recording to death of  $0.57 \pm 0.13$  (SE) years (the maximum latency  $\sim 2$  years). Only 6 subjects survived to undergo the protocol more than once.

**Data acquisition.** During each 72-hour data collection protocol, locomotor activity data were recorded continuously collected by an ambulatory activity monitor (AM-16, Ambulatory Monitoring Inc., Ardsley, NY) featuring a piezoelectric bender sensitive to accelerations of 0.01 g. Activity counts were accumulated over 5 minute

epochs and written to memory. Core body temperature was recorded simultaneously by a rectal thermistor (YSI, series 400, Yellow Springs, OH) that sampled the temperature data every 6 minutes throughout the 72-hour data-collection period. All activity and temperature recordings except for one AD patient have been previously published<sup>17</sup> and were used for a secondary analysis in this study.

**Neuropathological examination.** Brains were coronally sectioned after being fixed in neutral buffered formalin for  $> 4$  weeks. Then the hypothalamus was dissected from the brains for the examination of the suprachiasmatic nucleus (SCN). Fourteen different brain areas were then sampled to determine the diagnosis of Alzheimer's disease, dementia with Lewy bodies and other neurodegenerative dementias in accordance with standardized criteria<sup>4,29</sup>. To quantify the severity of AD, the amyloid plaque density was measured in the occipital cortex using Bielschowsky silver stain (not available in 2 AD patients)<sup>19</sup>. Neuropathologic diagnoses were confirmed independently by two board-certified neuropathologists.

**SCN immunohistochemistry.** Utilizing stereological sampling methods<sup>17</sup> in accordance with the principles described by Weibel<sup>30</sup>, the degeneration and function of the SCN were quantified by glia/neuron ratio and by counts of SCN-neurons containing vasopressin or neurotensin, respectively. Hypothalami were blocked, embedded in paraffin and serially sectioned at 8 microns in the coronal plane; the dorsal subdivision of the SCN was identified by examining the Nissl-stain; nuclear



diameter and cell density were used to localize the centre of the nucleus; sections from 200 microns on either side of the centre of the dorsal SCN were stained sequentially with Nissl, Bielschowsky silver, Nissl combined with glial fibrillary acidic protein (GFAP), vasopressin and neurotensin; the area of greatest cell density on each slide was selected for analysis. For all cell-counting protocols (glia/neuron ratio, neurotensin and vasopressin) only cells with complete cytoplasmic borders and a clearly visible nucleus were recorded, and the counts obtained from ten separate random  $0.1 \times 0.1$  mm<sup>2</sup> fields were averaged. Neurotensin content was not assessed in 2 subjects (1 AD and 1 frontotemporal dementia patients). Glia to neuron ratio was determined by examination of GFAP/Nissl-stained sections. Cells were identified by their respective astrocytic or neuronal staining patterns. The neuroanatomical data except for one AD patient have been previously published<sup>17</sup> and were used for a secondary analysis in this study.

**Circadian/daily rhythms.** To assess circadian/daily rhythmicity, we quantified the amplitude of core body temperature (CBT) rhythm, the amplitude of motor activity rhythm, and intraday variability in motor activity — a measure characterizing fragmentation of the activity rhythm<sup>31</sup>. To estimate the amplitudes of CBT and activity rhythms, we performed cosinor analyses to fit data using a single harmonic cosine function (24 hours). We calculated the intraday variability by measuring the hour-to-hour variance in the activity data.

**Adjustment for daily rhythm in neurotransmitter content.** It has been shown that vasopressin synthesis of the human SCN exhibits a circadian or diurnal rhythm<sup>32</sup>. Due to this rhythmicity, time of death could influence the estimated vasopressin neuronal density. By pooling data from all subjects, we confirmed a significant 24-hour rhythm in vasopressin-containing SCN neurons ( $p = 0.03$ )<sup>17</sup>. Based on the group averaged rhythm, we adjusted the number of vasopressin-containing SCN neurons using cosinor analysis. The analysis based on the adjusted measure (i.e., residue from cosinor fitting) confirmed but did not significantly improve the identified relationship between vasopressin neuronal density and fractal regulation. Given that the postmortem technique only allowed assessment of neurotransmitter content at a single time point per person, any individual differences in the day/night rhythm in vasopressin could not be established. Therefore, the adjustment based on the group average may not reliably account for the effect of time of day on neurotransmitter content for each individual, especially for these dementia patients with disrupted circadian/daily rhythms. In addition, the observed 24-hour rhythm of vasopressin, that was published before<sup>17</sup>, suggests that the SCNs in some subjects remained rhythmic to a certain degree. No significant dependence of neurotensin neuronal density on time of death was observed in these patients.

**Fractal analysis.** To estimate fractal patterns in the activity fluctuations at different time scales, we used the detrended fluctuation analysis (DFA)<sup>18</sup>. Compared with traditional correlation analyses such as power spectral analysis and Hurst analysis, the DFA can accurately quantify correlations in signals that may be masked by underlying nonstationarities or trends<sup>33</sup>. This method quantifies the detrended fluctuation function,  $F(n)$ , of activity fluctuations at different time scales  $n$ . The DFA algorithm includes four steps: (i) removing the global mean and integrating the time series of an activity signal; (ii) dividing the integrated signal into non-overlapping windows of the same chosen size  $n$ ; (iii) detrending the integrated signal in each window using polynomial functions to obtain residuals; and (iv) calculating the root mean square of residuals in all windows as fluctuation amplitude  $F(n)$ . The same four steps were repeated for different time scale  $n$ . To eliminate the effect of possible linear trends in original data, we applied the 2<sup>nd</sup> order DFA, i.e., the 2<sup>nd</sup> order of polynomial functions were used to detrend data<sup>34</sup>. A power-law form of  $F(n)$  indicates self-similarity (scale-invariance) in the fluctuations, yielding  $F(n) \sim n^\alpha$ . The parameter  $\alpha$ , called the scaling exponent, quantifies the correlation properties in the signal as follows: if  $\alpha = 0.5$ , there is no correlation in the fluctuations (“white noise”); if  $\alpha > 0.5$ , there are positive correlations, where large activity values are more likely to be followed by large activity values (and vice versa for small activity values). The exponent  $\alpha = 1.0$  indicates highest complexity in the systems. Similar  $\alpha$  values (close to 1.0) have been observed in many neurophysiological outputs under normal conditions, indicating complex feedback interactions<sup>9–11</sup>. A further increase in  $\alpha (> 1)$  suggests more regular or predicted fluctuations. A special case is  $\alpha = 1.5$  as observed in Brownian motion which is the integral of a white noise signal, i.e., increments of fluctuations are white noise.

In 5 recordings (4 AD and 1 non-AD patients),  $F(n)$  could only be obtained at time scales  $< \sim 4$  hours due to missing data in those recordings. Thus, the range of time scales for estimating the scaling exponent at  $n > 2$  hours was too small to obtain reliable  $\alpha_2$  for the 5 subjects.

**Statistics.** To determine effects of the SCN dysfunction on fractal activity regulation, a linear regression model was used to determine the relationships between antemortem fractal activity patterns and postmortem neuropathological measurements of neuronal counts (vasopressin and neurotensin) (Models 1–2 in Table 1). Similar regression models were used to examine how circadian and fractal measures can predict neurotransmitter content (Models 3a–4b).

- Huang, Y. L. *et al.* Age-associated difference in circadian sleep-wake and rest-activity rhythms. *Physiol Behav.* **76**, 597–603 (2002).

- Hatfield, C. F., Herbert, J., Van Someren, E. J., Hodges, J. R. & Hastings, M. H. Disrupted daily activity/rest cycles in relation to daily cortisol rhythms of home-dwelling patients with early Alzheimer’s dementia. *Brain* **127**, 1061–1074 (2004).
- Lim, A. S. & Saper, C. B. Sleep, circadian rhythms, and dementia. *Ann. Neurol.* **70**, 677–679 (2011).
- Stopa, E. G. *et al.* Pathologic evaluation of the human suprachiasmatic nucleus in severe dementia. *J. Neuropathol. Exp. Neurol.* **58**, 29–39 (1999).
- Wu, Y. H., Zhou, J. N., van Heerikhuizen, J., Jockers, R. & Swaab, D. F. Decreased MT1 melatonin receptor expression in the suprachiasmatic nucleus in aging and Alzheimer’s disease. *Neurobiol. Aging* **28**, 1239–1247 (2007).
- Nakamura, T. J. *et al.* Age-related decline in circadian output. *J. Neurosci.* **31**, 10201–10205 (2011).
- Farajnia, S. *et al.* Evidence for neuronal desynchronization in the aged suprachiasmatic nucleus clock. *J. Neurosci.* **32**, 5891–5899 (2012).
- Duffy, J. F., Zeitzer, J. M. & Czeisler, C. A. Decreased sensitivity to phase-delaying effects of moderate intensity light in older subjects. *Neurobiol. Aging* **28**, 799–807 (2007).
- Chialvo, D. R. Emergent complex neural dynamics. *Nature Physics* **6**, 744–750 (2010).
- Pittman-Polletta, B., Scheer, F. A., Butler, M., Shea, S. A. & Hu, K. The role of the circadian system in fractal neurophysiological control. *Biological Reviews* (2013).
- Goldberger, A. L., Amaral, L., Hausdorff, J. M. & Ivanov, P. Ch. Fractal dynamics in physiology: alterations with disease and aging. *Proc Natl Acad Sci U S A* **99**, 2466–2472 (2002).
- Bassingthwaite, J. B., Liebovitch, L. S. & West, B. J. Fractal physiology. Oxford university Press US, New York (1994).
- Hu, K., Scheer, F. A., Ivanov, P. C., Buijs, R. M. & Shea, S. A. The suprachiasmatic nucleus functions beyond circadian rhythm generation. *Neuroscience* **149**, 508–517 (2007).
- Hu, K. *et al.* Non-random fluctuations and multi-scale dynamics regulation of human activity. *Physica A* **337**, 307–318 (2004).
- Hu, K., Van Someren, E. J., Shea, S. A. & Scheer, F. A. Reduction of scale invariance of activity fluctuations with aging and Alzheimer’s disease: Involvement of the circadian pacemaker. *Proc. Natl. Acad. Sci. U. S. A* **106**, 2490–2494 (2009).
- Hofman, M. A. & Swaab, D. F. Living by the clock: the circadian pacemaker in older people. *Ageing Res. Rev.* **5**, 33–51 (2006).
- Harper, D. G. *et al.* Dorsomedial SCN neuronal subpopulations subserve different functions in human dementia. *Brain* **131**, 1609–1617 (2008).
- Peng, C. K. *et al.* Mosaic organization of DNA nucleotides. *Phys. Rev. E. Stat. Phys. Plasmas. Fluids Relat Interdiscip.* **49**, 1685–1689 (1994).
- Attems, J., Jellinger, K. A. & Lintner, F. Alzheimer’s disease pathology influences severity and topographical distribution of cerebral amyloid angiopathy. *Acta Neuropathol.* **110**, 222–231 (2005).
- Satlin, A., Volicer, L., Stopa, E. G. & Harper, D. Circadian locomotor activity and core-body temperature rhythms in Alzheimer’s disease. *Neurobiol. Aging* **16**, 765–771 (1995).
- Ancoli-Israel, S. *et al.* Variations in circadian rhythms of activity, sleep, and light exposure related to dementia in nursing-home patients. *Sleep* **20**, 18–23 (1997).
- Harper, D. G. *et al.* Differential circadian rhythm disturbances in men with Alzheimer disease and frontotemporal degeneration. *Arch. Gen. Psychiatry* **58**, 353–360 (2001).
- Harper, D. G. *et al.* Disturbance of endogenous circadian rhythm in aging and Alzheimer disease. *Am. J. Geriatr. Psychiatry* **13**, 359–368 (2005).
- Hu, K. *et al.* Fractal Patterns of Neural Activity Exist within the Suprachiasmatic Nucleus and Require Extrinsic Network Interactions. *PLoS. One.* **7**, e48927 (2012).
- Ivanov, P. C., Hu, K., Hilton, M. F., Shea, S. A. & Stanley, H. E. Endogenous circadian rhythm in human motor activity uncoupled from circadian influences on cardiac dynamics. *Proc. Natl. Acad. Sci. U. S. A* **104**, 20702–20707 (2007).
- Satlin, A., Volicer, L., Ross, V., Herz, L. & Campbell, S. Bright light treatment of behavioral and sleep disturbances in patients with Alzheimer’s disease. *Am. J. Psychiatry* **149**, 1028–1032 (1992).
- Riemersma-van der Lek, R. F. *et al.* Effect of bright light and melatonin on cognitive and noncognitive function in elderly residents of group care facilities: a randomized controlled trial. *JAMA* **299**, 2642–2655 (2008).
- Reppert, S. M. & Weaver, D. R. Coordination of circadian timing in mammals. *Nature* **418**, 935–941 (2002).
- McKee, A. C. Brain banking: basic science methods. *Alzheimer Dis. Assoc. Disord.* **13 Suppl 1**, S39–S44 (1999).
- Weibel, E. Sampling of tissue. pp. 63–100 (Academic Press, New York, 1989).
- Witting, W., Kwa, I. H., Eikelenboom, P., Mirmiran, M. & Swaab, D. F. Alterations in the circadian rest-activity rhythm in aging and Alzheimer’s disease. *Biol. Psychiatry* **27**, 563–572 (1990).
- Hofman, M. A. & Swaab, D. F. Alterations in circadian rhythmicity of the vasopressin-producing neurons of the human suprachiasmatic nucleus (SCN) with aging. *Brain Res.* **651**, 134–142 (1994).
- Chen, Z., Ivanov, P. C., Hu, K. & Stanley, H. E. Effect of nonstationarities on detrended fluctuation analysis. *Phys. Rev. E. Stat. Nonlin. Soft. Matter Phys.* **65**, 041107 (2002).



34. Hu, K., Ivanov, P. C., Chen, Z., Carpena, P. & Stanley, H. E. Effect of trends on detrended fluctuation analysis. *Phys. Rev. E. Stat. Nonlin. Soft. Matter Phys.* **64**, 011114 (2001).

## Acknowledgements

The authors wish to thank C. Saper and J. Lu at Beth Israel Deaconess Medical Center for helpful discussions. This work was supported by grants from US National Institutes of Health K99-HL102241 and R00-HL102241 to K.H., R01-AG20654 to D.G.H., K24-HL76446 to S.A.S., P30-HL101299 and R01-HL094806 to F.A.J.L.S., and from National Science Council in Taiwan (ROC) NSC 101-2911-I-008-001 to K.H.

## Author contributions

K.H., S.A.S. and F.A.J.L.S. conceived and designed the research. E.G.S. and D.G.H. carried out the experiment. K.H. and D.G.H. performed the data analysis. K.H. performed the statistical analysis. All authors wrote the manuscript.

## Additional information

**Competing financial interests:** The authors declare no competing financial interests.

**How to cite this article:** Hu, K., Harper, D.G., Shea, S.A., Stopa, E.G. & Scheer, F.A.J.L. Noninvasive fractal biomarker of clock neurotransmitter disturbance in humans with dementia. *Sci. Rep.* **3**, 2229; DOI:10.1038/srep02229 (2013).



This work is licensed under a Creative Commons Attribution-NonCommercial-NoDerivs 3.0 Unported license. To view a copy of this license, visit <http://creativecommons.org/licenses/by-nc-nd/3.0>