



# Reducing complication rates for repeat craniotomies in glioma patients: a single-surgeon experience and comparison with the literature

Ramin A. Morshed<sup>1</sup> · Jacob S. Young<sup>1</sup> · Andrew J. Gogos<sup>1</sup> · Alexander F. Haddad<sup>2</sup> · James T. McMahon<sup>3</sup> · Annette M. Molinaro<sup>1</sup> · Vivek Sudhakar<sup>4</sup> · Nadeem Al-Adli<sup>5</sup> · Shawn L. Hervey-Jumper<sup>1</sup> · Mitchel S. Berger<sup>1</sup>

Received: 24 June 2021 / Accepted: 12 November 2021 / Published online: 30 December 2021  
© The Author(s) 2021

## Abstract

**Background** There is a concern that glioma patients undergoing repeat craniotomies are more prone to complications. The study's goal was to assess if the complication profiles for initial and repeat craniotomies were similar, to determine predictors of complications, and to compare results with those in the literature.

**Methods** A retrospective study was conducted of glioma patients (WHO grade II–IV) who underwent either an initial or repeat craniotomy performed by the senior author from 2012 until 2019. Complications were recorded by discharge, 30 days, and 90 days postoperatively. New neurologic deficits were recorded by 90 days postoperatively. Multivariate regression was performed to identify factors associated with complications. A meta-analysis was performed to identify rates of complications based on number of prior craniotomies.

**Results** Within the cohort of 714 patients, 400 (56%) had no prior craniotomies, 218 (30.5%) had undergone 1 prior craniotomy, and 96 (13.5%) had undergone  $\geq 2$  prior craniotomies. There were 27 surgical and 10 medical complications in 30 patients (4.2%) and 19 reoperations for complications in 19 patients (2.7%) with no deaths by 90 days. Complications, reoperation rates, and new neurologic deficits did not differ based on number of prior craniotomies. On multivariate analysis, older age (OR 1.5, 95%CI 1.0–2.2) and significant leukocytosis due to steroid use (OR 12.6, 95%CI 2.5–62.9) were predictors of complications. Complication rates in the cohort were lower than rates reported in the literature.

**Conclusion** Contrary to prior reports in the literature, repeat craniotomies can be as safe as initial operations if surgeons implement best practices.

**Keywords** Complications · Glioma · Recurrence · Surgical resection

---

This article is part of the Topical Collection on *Brain Tumors*

---

Ramin A. Morshed and Jacob S. Young contributed equally.

✉ Mitchel S. Berger  
Mitchel.Berger@ucsf.edu

<sup>1</sup> Department of Neurological Surgery, University of California, San Francisco, 505 Parnassus Ave., Rm. M-779, San Francisco, CA 94143-0112, USA

<sup>2</sup> School of Medicine, University of California, San Francisco, San Francisco, CA, USA

<sup>3</sup> School of Medicine, Emory University, Atlanta, GA, USA

<sup>4</sup> School of Medicine, University of Pittsburgh, Pittsburgh, PA, USA

<sup>5</sup> School of Medicine, TCU and UNTHSC, Fort Worth, TX, USA

## Introduction

Greater extent of resection has been shown to improved outcomes for patients with low and high grade gliomas both at initial presentation and recurrence [5, 11, 28, 31, 38]. However, some reports suggest that glioma patients undergoing reoperation may be more prone to certain complications [25]. The decision to reoperate is often a challenging one, and the potential benefits of a repeat surgical resection must be weighed against the risks of additional surgery as well as the potential benefits of other therapies such as radiotherapy or chemotherapy.

There are several concerns for why reoperation may pose an increased risk to patients. Prior anatomical landmarks may be obscured due to tumor recurrence and gliosis, and adhesions may predispose patients to cortical injury.

Additionally, vascular supply to the skin, prior radiation, steroid use, and scar tissue may increase the risk for wound healing complications. Prior series including patients undergoing repeat craniotomy for glioma resection have reported complication rates between 5.7 and 48% [3, 6, 7, 11, 13, 15, 20, 22, 29, 31, 33, 37, 41, 43, 44].

Surgical experience has been shown to significantly reduce complications in other neurosurgical areas, and therefore, we wanted to determine whether complication rates for repeat craniotomies would be similar to rates for initial resections when surgery was performed by an experienced neurosurgical oncologist. The goals of the study were to assess the complication profile based on number of prior craniotomies, to compare results with those in the literature, and to discuss techniques for repeat craniotomies.

## Methods

### Inclusion criteria

After obtaining approval from the institutional review board (Study Number 15–17,500), the institutional tumor registry was searched for patients who underwent a craniotomy for glioma between 2012 and 2019, corresponding to modern documentation of complications in the electronic medical record at our institution. Consent was not required due to minimal risk posed to patients. Inclusion criteria for the cohort included age  $\geq 17$ , initial or repeat craniotomy, a diagnosis of WHO grade II–IV glioma, operation performed by the senior author, and follow-up of 90 days unless death occurred prior ( $n=0$ ). Patient, tumor, and outcome data were collected retrospectively from the electronic medical record.

### Patient selection for repeat craniotomies

Repeat surgical intervention for recurrent glioma should be judiciously offered to patients based on each unique patient's needs, baseline function, and disease status. Reasons for offering a repeat craniotomy include obtaining a diagnosis when there is suspicion of malignant transformation, cytoreduction of progressive disease with a plan for adjuvant therapy postoperatively, obtaining tissue for clinical trial purposes, and debulking a large or symptomatic recurrence associated with mass effect. Patient should have a reasonable functional status and an expected survival longer than 1–3 months from surgery which is the expected recovery time from a craniotomy. As with first-time craniotomies, patients should be medically optimized before proceeding with surgery, and if there is a history of seizures, adequate seizure control with antiepileptic medications should be achieved prior to surgical intervention. Our group discusses

patient management as part of a multidisciplinary team including neuro-oncologists, neurosurgeons, and radiation oncologists to determine if reoperation is the most reasonable avenue to pursue when a recurrence is detected.

## Surgical technique for repeat craniotomies

### Skin opening

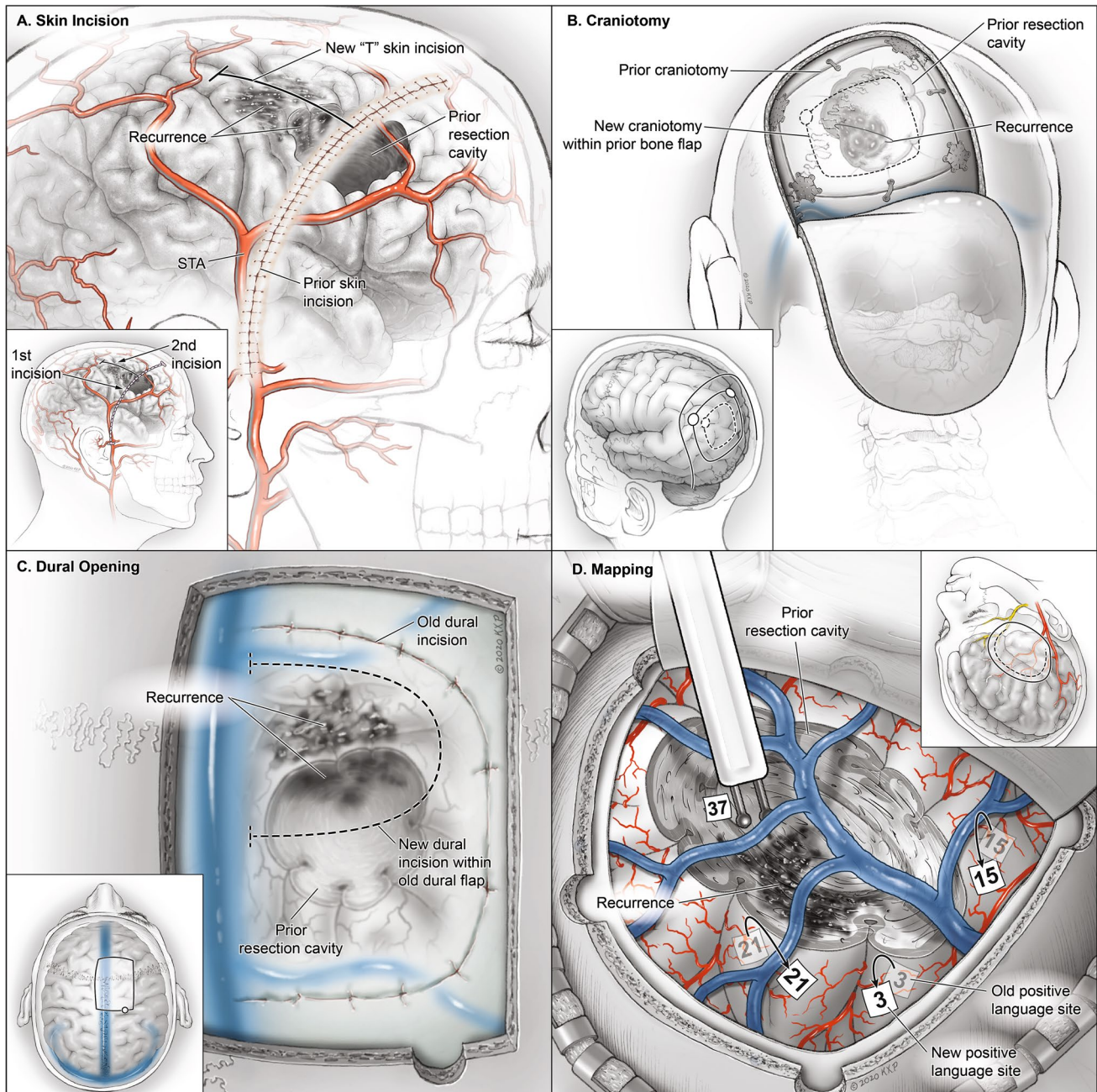
Assessing the integrity of the skin and identifying prior incisions is critical for any patient who is evaluated for surgery. Skin thickness, mobility, turgor, and presence of hair follicles can influence how the skin is opened, manipulated, and closed. After placing the patient in a Mayfield head-holder and registering neuro-navigation, the location of the tumor is drawn on the scalp to determine if the prior skin incision allows for sufficient access to the site of tumor recurrence. If the exposure needs to be adjusted, then a perpendicular incision (“T” incision) is used to extend the skin opening (Fig. 1a). Our group aims to keep the length of any skin flap shorter than its width to ensure adequate blood supply. The subcutaneous tissue is bluntly dissected beyond the skin incision to undermine the tissue and allow for a tension free closure. If the scalp is thin, Raney clips are avoided. Monopolar electrocautery is avoided during repeat craniotomies, and the bipolar is favored to control any arterial bleeding. After the bone exposure is complete, the galea is kept covered with a wet 4×4 gauze and soaked with betadine irrigation.

### Craniotomy

A craniotomy that facilitates targeted cortical mapping of the surrounding tissue and allows for a trajectory to the center of the tumor, termed the transcortical equatorial approach, is performed [30]. The tumor is again drawn on the bone to visualize the necessary craniotomy for exposure. If the bone flap from the prior surgery is mobile and overlies the lesion, then the plates and screws are removed, and the prior bone flap is elevated. If the prior bone flap has fused to the calvarium, then the craniotomy can be tailored within the prior flap to expose the focus of recurrence (Fig. 1b). In these cases, the dura may be adherent and prone to tearing during opening.

### Dural opening

Dural opening during repeat craniotomies can be challenging. Once again, the lesion is drawn on the dura, and efforts should be made to stay within the prior suture line (Fig. 1c) as the cortex tends to be most adherent to the dura under the prior suture line. If necessary, a leg of the prior suture line can be crossed to obtain the necessary



**Fig. 1** Technical considerations for approaching glioma recurrence. **a** The skin incision for a repeat craniotomy may not overly the area of tumor recurrence. If the exposure needs to be adjusted, then a perpendicular incision (a “T” incision) is used to extend the skin opening. **b** A bone flap that has not fused to the surrounding cranium may be removed and elevated. However, if the prior bone flap has fused to the calvarium, then the craniotomy can be tailored within the prior flap to expose the focus of recurrence. **c** The cortex tends to be most

cortical exposure to perform a tailored map. To minimize infection, gloves are changed prior to opening the dura. During opening, the surgeon must be cautious to avoid avulsing cortical or bridging veins adherent to the ventral

surface of the dura under the prior suture line, and a new dural flap may be within the prior dural opening. If necessary, a leg of the prior suture can be crossed to obtain the necessary cortical exposure. **d** Mapping for glioma recurrence must be tailored to tumor location. A combination of cortical and subcortical mapping can be performed to allow for safe resection. Previously positive mapping sites at first surgery may not be positive at the time of repeat craniotomy given the ability of neighboring cortical regions to assimilate function

surface of the dura. In some recurrent cases, the dura is opened with a 15-blade and then the back of the blade is used to mobilize the underlying cortex away from the adherent dura with the assistance of copious irrigation.

In general, scissors are avoided under the dura during recurrent tumor resections. Any bleeding dural vessels are snapped together with a hemostat to obtain hemostasis, and the bipolar is avoided to prevent dural shrinkage. Notably during mapping procedures, sites of cortical function may have migrated when compared to prior surgical function (Fig. 1d).

## Closure

Dural closure can be difficult in the recurrence setting given the extent of dural scarring and friability. We aim to close the dura either primarily or with a dural patch in anticipation of a potential future surgery for tumor recurrence. The dural closure acts as a barrier between the cortical surface and bone and is critical to safely perform any future craniotomy. If the dura is hyperemic, we prefer to resect it and sew in a patch rather than coagulating the edges and shrinking it back. A dural sealant is applied, but it does not replace achieving a water-tight closure. If a large entry was made into the ventricular system near the foramen of Monro, a cavity drain is left in place for 2–3 days to divert bloody CSF. However, for smaller entries into the temporal or occipital horn, a drain is not required. The bone flap is replaced in the standard fashion with plates and screws, and vancomycin powder is applied to the wound [26]. A subgaleal drain is left in place if the subcutaneous tissue is vascular and bloody.

In the reoperation setting, skin closure poses some significant challenges. Prior radiation may lead to fragile skin which can make closure difficult. For a second craniotomy with healthy skin and no prior radiation, closure proceeds in the usual fashion with interrupted subgaleal sutures and skin staples to evert the edges. For any patient undergoing a third craniotomy or beyond with or without radiation, the skin is closed with a running vertical mattress 4–0 nylon. Sutures are kept in place for at least 10 days but may be left in up to 3–4 weeks if Bevacizumab was recently used given the concern for higher rates of surgical site infection (SSI).

## Identification of complications

Complication events were identified via chart review by the authors (R.A.M., J.S.Y., A.F.H., V.S.) and were categorized as either surgical or medical and were retrospectively collected within different timeframes in the postoperative setting: by discharge, between discharge and 30 days postoperatively, and between 30 and 90 days postoperatively. New neurologic deficits were noted if present by 90 days

postoperatively. Reoperations were noted if they were related to a postoperative complication.

## Systematic analysis

A systematic review was performed in accordance with PRISMA guidelines (Supplemental Fig. 1). To identify articles eligible for analysis, a database search was performed using PubMed and SCOPUS. The following search terms were used: (“Glioma” OR “Glioblastoma”) AND (“Craniotomy” OR “Surgery”) AND (“Complications” OR “Safety”). Abstracts were screened for relevance ( $n = 987$ ) with the following exclusion criteria: pediatric glioma, brachytherapy craniotomy outcomes, minimally invasive approaches, adjunct medication outcomes, studies exclusively evaluating infratentorial tumors, studies reporting a mix of tumor types without sufficient data for glioma outcome extraction, and insufficient data to extract outcomes of interest. The remaining studies were evaluated in full-text review ( $n = 148$ ). Outcomes of interest included overall complication rate as well as specific complications such as intracranial hemorrhage, SSI/wound dehiscence, cerebrospinal fluid (CSF) leak, and venous thromboembolism (VTE). Papers with the necessary data to determine these outcomes were eligible for meta-analyses ( $n = 30$ ; References [1, 2, 4, 6–11, 13, 14, 16–19, 21, 22, 24, 27, 32–35, 37, 39, 40, 42, 43, 45]).

## Statistical analyses

Descriptive statistics were used to define the patient cohort, treatment details, and clinical outcomes. An ANOVA was used to compare OR time and length-of-stay across number of prior craniotomies. A Pearson  $\chi^2$  test was used to compare nominal variables, and a t-test was used to compare continuous variables across subgroups. A univariate nominal regression was performed to identify factors associated with postoperative complications by 90 days. Recursive partitioning analysis was used to identify the optimal split for white blood cell count (WBC) associate with complication outcome. This identified a WBC threshold of  $\geq 21.7$  as a cut off significantly associated with a postoperative complication. All patients with a WBC  $\geq 21.7$  were on high-dose steroids at the time of operation and 90% of these patients had been on chronic steroids for  $\geq 1$  month. Predictive variables from the univariate analysis with a  $p$ -value  $\leq 0.2$  were included in a multivariate nominal regression analysis. Meta-analyses for complication endpoints were performed using a random effects model. Heterogeneity was assessed using the  $\chi^2$  test for heterogeneity, with  $I^2$  values  $\geq 50\%$  signifying sizable heterogeneity and  $\geq 75\%$  indicating substantial heterogeneity. Forest

**Table 1** Patient demographics and treatment details

|                              | All patients (n=714)  | First craniotomy (n=400) | Repeat craniotomy (n=314) | p-value |
|------------------------------|-----------------------|--------------------------|---------------------------|---------|
| WHO grade                    |                       |                          |                           | < .0001 |
| II                           | 248 (34.7%)           | 164 (41.0%)              | 84 (26.8%)                |         |
| III                          | 206 (28.9%)           | 89 (22.3%)               | 117 (37.3%)               |         |
| IV                           | 260 (36.4%)           | 147 (36.7%)              | 113 (35.9%)               |         |
| Age (mean ± STE)             | 47.3 ± 0.54           | 47.5 ± 0.78              | 47.0 ± 0.71               | 0.64    |
| Sex (M:F)                    | 422:292 (59.1%:40.9%) | 247:153 (61.8%:38.2%)    | 175:139 (55.7%:44.3%)     | 0.10    |
| Race/ethnicity *             |                       |                          |                           | 0.12    |
| African American             | 8 (1.1%)              | 6 (1.5%)                 | 2 (0.6%)                  |         |
| Asian/Pacific Islander       | 46 (6.6%)             | 30 (7.7%)                | 16 (5.1%)                 |         |
| Caucasian                    | 575 (80.5%)           | 306 (78.9%)              | 269 (86.5%)               |         |
| Hispanic/Latino              | 31 (4.4%)             | 20 (5.2%)                | 11 (3.5%)                 |         |
| Other                        | 39 (5.6%)             | 26 (6.7%)                | 13 (4.2%)                 |         |
| ASA class                    |                       |                          |                           | < .0001 |
| I                            | 42 (5.9%)             | 35 (8.8%)                | 7 (2.2%)                  |         |
| II                           | 405 (56.7%)           | 236 (59%)                | 169 (53.8%)               |         |
| III                          | 263 (36.8%)           | 128 (32%)                | 135 (43.0%)               |         |
| IV                           | 4 (5.6%)              | 1 (0.2%)                 | 3 (1.0%)                  |         |
| BMI (mean ± STE)             | 26.8 ± 0.2            | 26.9 ± 0.3               | 26.8 ± 0.3                | 0.86    |
| Past medical history         |                       |                          |                           |         |
| DM                           | 35 (4.9%)             | 27 (6.8%)                | 8 (2.5%)                  | 0.008   |
| CHF                          | 0 (0%)                | 0 (0%)                   | 0 (0%)                    | NR**    |
| HTN                          | 116 (16.2%)           | 67 (16.8%)               | 49 (15.6%)                | 0.68    |
| COPD                         | 1 (0.1%)              | 1 (0.2%)                 | 0 (0%)                    | 0.28    |
| Active smoker                | 34 (4.8%)             | 16 (4%)                  | 18 (5.7%)                 | 0.28    |
| Number of prior craniotomies |                       |                          |                           |         |
| 0                            | 400 (56.0%)           | 400 (100%)               | -                         |         |
| 1                            | 218 (30.5%)           | -                        | 218 (69.4%)               |         |
| 2                            | 73 (10.2%)            | -                        | 73 (23.3%)                |         |
| 3                            | 21 (2.9%)             | -                        | 21 (6.7%)                 |         |
| 4                            | 1 (0.2%)              | -                        | 1 (0.3%)                  |         |
| 5                            | 1 (0.2%)              | -                        | 1 (0.3%)                  |         |
| Prior chemotherapy           | 208 (29.1%)           | 23 (5.8%)                | 185 (58.9%)               | < .0001 |
| Prior radiation              | 159 (22.3%)           | 17 (4.3%)                | 142 (45.2%)               | < .0001 |
| Elective surgery             | 680 (95.2%)           | 374 (93.5%)              | 306 (97.5%)               | 0.01    |
| Transfer/emergent case       | 34 (4.8%)             | 26 (6.5%)                | 8 (2.5%)                  |         |
| Awake craniotomy             | 358 (50.1%)           | 231 (57.8%)              | 127 (40.4%)               | < .0001 |
| Asleep craniotomy            | 356 (49.9%)           | 169 (42.3%)              | 187 (59.6%)               |         |
| Skin closure                 |                       |                          |                           | < .0001 |
| Staples only                 | 619 (86.7%)           | 370 (92.5%)              | 249 (79.3%)               |         |
| Suture only                  | 67 (9.4%)             | 20 (5%)                  | 47 (15.0%)                |         |
| Staples + suture             | 28 (3.9%)             | 10 (2.5%)                | 18 (5.7%)                 |         |
| Drain placed                 | 637 (89.2%)           | 394 (98.5%)              | 243 (77.4%)               | < .0001 |

DM, diabetes mellitus; CHF, congestive heart failure; HTN, hypertension; COPD, chronic obstructive pulmonary disease; OR, operative room; EBL, estimated blood loss; NR, not reportable

\*Declined to report race/ethnicity (n=15 patients (2.1%))

\*\*Not reportable given no patients in the cohort had CHF in either subgroup

plots were used to present results. Statistical analysis was performed using JMP Pro 15 (SAS Institute, Cary, NC) and R software version 3.6.1 (R Foundation for Statistical

Computing, Vienna, Austria). The level of significance was 0.05 for all analyses.

## Results

### Surgical cohort and complication profile

Over a 7-year period, 714 patients underwent a craniotomy for resection of either a newly diagnosed or recurrent glioma (WHO grade II–IV). All patients had 90-day follow-up to assess for postoperative complications and new neurologic deficits. Details of the cohort are found in Table 1. Within the cohort, 218 patients (30.5%) had undergone 1 prior craniotomy and 96 patients (13.5%) had undergone  $\geq 2$  prior craniotomies. Prior chemotherapy had been used in 5.8%, 50.9%, and 77.1% of patients undergoing 0, 1, or  $\geq 2$  prior craniotomies, respectively. Prior radiation had been used in 4.3%, 40.8%, and 55.2% of patients undergoing 0, 1, or  $\geq 2$  prior craniotomies, respectively.

The 90-day mortality rate for the cohort was 0%. Overall, there were 27 surgical and 10 medical complication events in 30 patients (4.2% of the cohort). First-time craniotomies were associated with 9 medical and 14 surgical complications seen in 4.3% of this subgroup while repeat craniotomies were associated with 1 medical and 13 surgical complications seen in 4.1% of this subgroup. New neurologic deficits were seen in 13.4% of patients by 90 days (first-time vs repeat craniotomy: 12.7% vs 14.0%,  $p=0.62$ ). Table 2 details the complication profile in patients undergoing a first-time craniotomy, and Table 3 details the complication profile in patients undergoing a repeat craniotomy. Overall, there were 19 reoperation events for complications in 19 patients (2.7% of the entire cohort). First-time craniotomies had a reoperation rate of 3.5% while repeat craniotomies had a reoperation rate of 2% ( $p=0.22$ ). Prior to discharge, 3 patients required reoperation for hematoma evacuation, decompression for stroke, and removal of a retained drain. Between discharge and 30 days postoperatively, there were 4 patients who required reoperation, all relating to wound infection or dehiscence. Between 30 and 90 days postoperatively, there were 12 return to operating room events: 7 for infection washout, 2 for hydrocephalus shunting, 2 for burr holes for subdural collections, and 1 for shunting of a persistent pseudomeningocele. Of all patients who developed a postoperative infection, only 1 patient received Bevacizumab which had been given in the postoperative period about 3 weeks after surgery.

### Predictors of complications

Next, we examined if the number of prior craniotomies impacted treatment outcomes and complications (Table 4). Within this cohort, patients with prior craniotomies had shorter operation times ( $p < 0.0001$ ) and lower estimated

**Table 2** Overview of complication events for patients undergoing first craniotomy

|                              | By discharge | Discharge to 30 days | 30 days to 90 days |
|------------------------------|--------------|----------------------|--------------------|
| Return to OR events          | 2            | 2                    | 4                  |
| Surgical complication events | 2            | 9                    | 3                  |
| EDH                          | 0            | 0                    | 0                  |
| SDH                          | 0            | 2                    | 0                  |
| IPH                          | 1            | 2                    | 0                  |
| Stroke                       | 1            | 0                    | 0                  |
| CSF Leak                     | 0            | 0                    | 0                  |
| SSI                          | 0            | 3                    | 2                  |
| Wound dehiscence             | 0            | 0                    | 0                  |
| Subdural hygroma             | 0            | 2                    | 1                  |
| Hydrocephalus                | 0            | 0                    | 0                  |
| Medical complication events  | 3            | 6                    | 0                  |
| Cardiac arrest/MI            | 0            | 0                    | 0                  |
| PNA                          | 1            | 3                    | 0                  |
| VTE                          | 1            | 3                    | 0                  |
| Sepsis                       | 0            | 0                    | 0                  |
| UTI                          | 0            | 0                    | 0                  |
| AKI                          | 1            | -                    | -                  |

EDH, epidural hematoma; SDH, subdural hematoma; IPH, intraparenchymal hematoma; CSF, cerebrospinal fluid; SSI, surgical site infection; MI, myocardial infarction; PNA, pneumonia, VTE, venous thromboembolism; UTI, urinary tract infection; AKI, acute kidney injury

blood loss (EBL) ( $\geq 2$  vs. 0 prior craniotomies,  $p=0.03$ ; 1 vs. 0 prior craniotomies,  $p=0.0001$ ) compared to patients undergoing initial craniotomy. The length-of-stay and home discharge rate were not statistically different between groups. Rates of patients suffering a complication or requiring a reoperation by discharge, 30 days, 90 days, or at any timepoint did not differ based on number of prior craniotomies.

We next performed analyses to determine patient, tumor, and treatment factors that were predictive of postoperative complications (Table 5). On multivariate analysis, older age (unit OR by decade 1.5, 95%CI 1.0–2.2) and WBC  $\geq 21.7$  (OR 12.6, 95%CI 2.5–62.9) were significant predictors of postoperative complications. Given that SSI and wound dehiscence were the most frequent surgical complications observed, we examined patient risk factors that were associated with this complication specifically (Table 6). Higher preoperative BMI ( $p=0.0003$ ) and urgent/emergent surgery ( $p=0.04$ ) were associated with SSI/dehiscence. Risk factors predicting intracranial hemorrhage including epidural, subdural, or intraparenchymal hematomas were also assessed. A history of DM was associated with intracranial hemorrhage (DM vs no DM: 5.7% vs. 0.4%,  $p=0.0003$ ).

**Table 3** Overview of complication events for patients undergoing repeat craniotomy

|                              | By discharge | Discharge to 30 day | 30 days to 90 days |
|------------------------------|--------------|---------------------|--------------------|
| Return to OR events          | 1            | 2                   | 8                  |
| Surgical complication events | 1            | 5                   | 7                  |
| EDH                          | 0            | 0                   | 0                  |
| SDH                          | 0            | 0                   | 1                  |
| IPH                          | 0            | 0                   | 0                  |
| Stroke                       | 1            | 0                   | 0                  |
| CSF leak                     | 0            | 0                   | 0                  |
| SSI                          | 0            | 3                   | 3                  |
| Wound dehiscence             | 0            | 0                   | 1                  |
| Subdural hygroma             | 0            | 1                   | 0                  |
| Hydrocephalus                | 0            | 1                   | 2                  |
| Medical complication events  | 0            | 1                   | 0                  |
| Cardiac arrest/MI            | 0            | 0                   | 0                  |
| PNA                          | 0            | 0                   | 0                  |
| VTE                          | 0            | 1                   | 0                  |
| Sepsis                       | 0            | 0                   | 0                  |
| UTI                          | 0            | 0                   | 0                  |
| AKI                          | 0            | -                   | -                  |

### Meta-analyses of complications after glioma resection

A systematic analysis of studies examining glioma patients undergoing either initial or repeat craniotomy for resection was performed, and 30 studies met criteria for analysis. Overall, 10 studies examined complications after first-time craniotomy, 10

studies examined complications after 1 prior craniotomy, and 2 studies examined complications after 2 or more prior craniotomies. Overall non-deficit complication rates after 0, 1, and  $\geq 2$  prior craniotomies were 9%, 11%, and 19%, respectively, based on a random effects model (Fig. 2).

Forest plots of rates of specific complications are displayed in Fig. 3. In the 17 studies that examined rates of intracranial hemorrhage after craniotomy for glioma, the proportion of cases with intracranial hemorrhage was 3%. In the 7 studies that examined rates of CSF leak, the proportion of cases with CSF leak was reported to be 2%. In the 18 studies that examined rates of SSI or wound dehiscence, the proportion of cases was reported to be 3%. In the 13 studies that examined VTE rates, the proportion of cases was reported to be 3%.

### Discussion

In this series of glioma patients undergoing craniotomy for resection, we retrospectively evaluated the complication profile under the care of an experienced neurosurgeon specializing in glioma surgery and examined whether number of prior craniotomies impacted complications and reoperations. This modern series of patients in the era of electronic medical records ensured more comprehensive complication inclusion as well as provided for better delineation on when these complications occurred during a patient's postoperative course. Overall, total complication rates by 90 days in patients who had undergone 0, 1, or  $\geq 2$  prior craniotomies were 4.3%, 4.1%, and 4.2%, respectively. Furthermore, rates of new neurologic deficits by 90 days did not differ between first-time and repeat craniotomies. In addition to

**Table 4** Number of prior craniotomies does not impact frequency of complications at discharge, 30 days, or 90 days

|   | Prior craniotomies   |                 |                  | <i>p</i> -value |       |
|---|----------------------|-----------------|------------------|-----------------|-------|
|   | 0                    | 1               | $\geq 2$         |                 |       |
| OR time (hrs)                                   | 6.9 $\pm$ 0.1        | 5.8 $\pm$ 0.1   | 5.4 $\pm$ 0.2    | < .0001*        |       |
| EBL (mL)  | 178.4 $\pm$ 6.1      | 139.2 $\pm$ 8.3 | 148.9 $\pm$ 12.3 | 0.0004*         |       |
| Length of stay (d)                              | 3.6 $\pm$ 0.14       | 3.6 $\pm$ 0.19  | 2.9 $\pm$ 0.29   | 0.11*           |       |
| Discharge home                                  | 362/400 (90.5%)      | 201/218 (92.2%) | 88/96 (91.7%)    | 0.76†           |       |
| Patients with complication                      | By discharge         | 4/400 (1.0%)    | 1/218 (0.5%)     | 0/96 (0%)       | 0.50† |
|   | Discharge to 30 days | 13/400 (3.3%)   | 4/218 (1.8%)     | 2/96 (2.1%)     | 0.54† |
|   | 30 days to 90 days   | 3/400 (0.8%)    | 5/218 (2.3%)     | 2/96 (2.1%)     | 0.25† |
|   | Surgery to 90 days   | 17/400 (4.3%)   | 9/218 (4.1%)     | 4/96 (4.2%)     | 0.99† |
| Patients requiring reoperation by 90 days ‡     | 8/400 (2%)           | 8/218 (3.7%)    | 3/96 (3.1%)      | 0.45†           |       |
| Patients with new neurologic deficit by 90 days | 56/400 (14%)         | 28/218 (12.8%)  | 12/96 (12.5%)    | 0.88            |       |
| 90-day mortality                                | 0/400 (0%)           | 0/218 (0%)      | 0/96 (0%)        | 1.00            |       |

OR, operating room; EBL, estimated blood loss

\* ANOVA

†  $\chi^2$  test

‡ Analysis by patient. One patient required with 1 prior craniotomy required 2 reoperations by 90 days

**Table 5** Univariate and multivariate analysis for predictors of any complication

|                                 | Univariate analysis |          |                 | Multivariate analysis |           |                 |
|---------------------------------|---------------------|----------|-----------------|-----------------------|-----------|-----------------|
|                                 | OR                  | 95% CI   | <i>p</i> -value | OR                    | 95% CI    | <i>p</i> -value |
| Age (by decade)                 | 1.4                 | 1.1–1.8  | 0.01            | 1.5                   | 1.0–2.2   | 0.04            |
| BMI                             | 1.1                 | 1.0–1.1  | 0.03            | 4.5                   | 0.25–82.1 | 0.31            |
| Grade                           |                     |          | 0.14            |                       |           | 0.98            |
| IV vs II                        | 2.0                 | 0.8–4.7  |                 | 1.1                   | 0.3–3.6   |                 |
| IV vs III                       | 2.2                 | 0.8–5.7  |                 | 1.0                   | 0.3–3.2   |                 |
| Sex (M:F)                       | 1.0                 | 0.5–2.2  | 0.92            |                       |           |                 |
| Prior craniotomies              |                     |          | 0.99            |                       |           |                 |
| 1 vs 0                          | 1.0                 | 0.4–2.2  |                 |                       |           |                 |
| ≥ 2 vs 0                        | 1.0                 | 0.3–2.9  |                 |                       |           |                 |
| Race *                          |                     |          | 0.19            |                       |           | 0.59            |
| African American                | 4.0                 | 0.5–33.8 |                 | 6.0                   | 0.6–61.9  |                 |
| Asian/Pacific Islander          | 1.3                 | 0.3–5.6  |                 | 1.6                   | 0.3–8.1   |                 |
| Hispanic/Latino                 | 1.9                 | 0.4–8.6  |                 | 1.8                   | 0.3–11.8  |                 |
| Other                           | 3.2                 | 1.0–9.8  |                 | 2.3                   | 0.5–11.3  |                 |
| ASA classification              |                     |          | 0.06            |                       |           | 0.53            |
| II vs I                         | 0.6                 | 0.1–2.8  |                 | 0.3                   | 0.1–1.9   |                 |
| III vs I                        | 1.2                 | 0.3–5.5  |                 | 0.5                   | 0.1–2.9   |                 |
| IV vs I                         | 6.7                 | 0.5–96.4 |                 | 1.1                   | 0.03–48.2 |                 |
| Diabetes                        | 3.2                 | 1.1–9.9  | 0.03            | 1.5                   | 0.4–5.8   | 0.53            |
| Active smoker                   | 0.7                 | 0.1–5.1  | 0.71            |                       |           |                 |
| Hypertension                    | 2.7                 | 1.2–6.0  | 0.01            | 1.7                   | 0.6–4.7   | 0.30            |
| Prior chemo                     | 1.0                 | 0.5–2.3  | 0.91            |                       |           |                 |
| Prior XRT                       | 1.1                 | 0.4–2.5  | 0.89            |                       |           |                 |
| Transfer/emergent (vs elective) | 1.5                 | 0.3–6.4  | 0.62            |                       |           |                 |
| Drain                           | 1.7                 | 0.4–7.4  | 0.46            |                       |           |                 |
| Skin closure                    |                     |          | 0.44            |                       |           |                 |
| Suture                          | 0.6                 | 0.2–2.8  |                 |                       |           |                 |
| Staples + suture                | 7.1 <sup>e-7</sup>  | 0-∞      |                 |                       |           |                 |
| Awake craniotomy (vs asleep)    | 1.1                 | 0.5–2.4  | 0.72            |                       |           |                 |
| OR time                         | 1.0                 | 0.1–13.6 | 0.99            |                       |           |                 |
| EBL (by 100 mL)                 | 1.2                 | 1.0–1.4  | 0.03            | 1.2                   | 0.9–1.4   | 0.18            |
| Preoperative WBC ≥ 21.7         | 11.4                | 2.8–46.6 | <.0001          | 12.6                  | 2.5–62.9  | 0.002           |

*BMI*, body mass index; *XRT*, radiation therapy; *OR*, operating room; *EBL*, estimated blood loss

\*vs Caucasian

results from the meta-analysis examining glioma-specific complication rates, the rate of morbidity in this series is also lower than other large center modern series examining complication rates for intracranial tumors [44]. In this series, repeat operations tended to have shorter operating room times and less EBL compared to primary operations. This likely reflects the goal of these operations to remove focal recurrence through small, tailored exposures. Reoperation rates for complications were also low in this series and did not differ by number of prior craniotomies. Given these findings, repeat craniotomies should therefore be considered when patients re-present with focal recurrent disease. Furthermore, it is critical that complication rates be kept low so as to not detract from the survival benefit that

more extensive tumor resection can achieve in the context of recurrent glioma [33, 41].

When examining risk factors for complications in the entire cohort, age and significant leukocytosis were both found to be predictors of overall complications. Age has previously been identified as a risk factor for poor prognosis in the glioma population [23, 28]. Significantly elevated WBC seen in a subgroup of patients on high-dose steroids may predispose patients to higher risks of complications. Despite prior concern regarding radiotherapy, diabetes, and reopening of a prior incision, these were not identified as risk factors for an SSI. Interestingly, diabetes was identified as a risk factor for intracranial hemorrhage, which may be



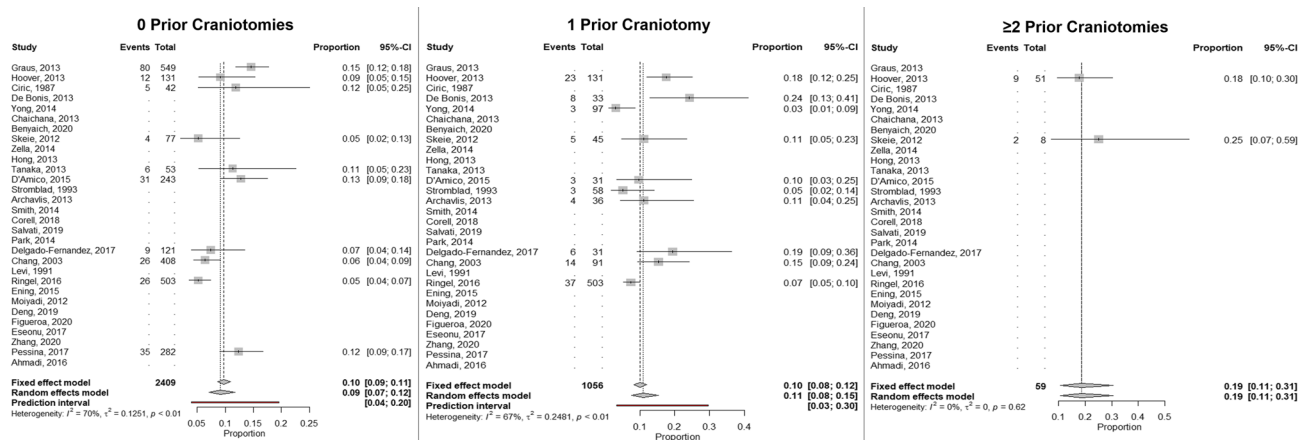
**Table 6** Risk factors for surgical site infection or dehiscence

|                    | SSI/dehiscence (n = 11) | No wound issues (n = 703) | p-value |
|--------------------|-------------------------|---------------------------|---------|
| Age                | 55.1 ± 4.3              | 47.2 ± 0.5                | 0.07*   |
| BMI                | 32.6 ± 1.6              | 26.8 ± 0.2                | 0.0003* |
| Male               | 4/422 (0.9%)            | 4/418 (99.1%)             | 0.12†   |
| Female             | 7/292 (2.4%)            | 285/292 (97.6%)           |         |
| Prior craniotomies |                         |                           | 0.77†   |
| 0                  | 5/400 (1.3%)            | 395/400 (98.7%)           |         |
| 1                  | 4/217 (1.8%)            | 213/217 (98.2%)           |         |
| 2+                 | 2/97 (2.1%)             | 95/97 (97.9%)             |         |
| ASA classification |                         |                           | 0.13†   |
| I                  | 2/42 (4.8%)             | 40/42 (95.2%)             |         |
| II                 | 3/405 (0.7%)            | 402/405 (99.3%)           |         |
| III                | 6/263 (2.3%)            | 257/263 (97.7%)           |         |
| IV                 | 0/4 (0%)                | 4/4 (100%)                |         |
| Diabetes           | 0/35 (0%)               | 35/35 (100%)              | 0.45†   |
| No diabetes        | 11/679 (1.6%)           | 668/679 (98.4%)           |         |
| Prior XRT          | 3/159 (1.9%)            | 156/159 (98.1%)           | 0.69†   |
| No prior XRT       | 8/555 (1.4%)            | 547/555 (98.6%)           |         |
| Elective           | 9/680 (1.3%)            | 671/680 (98.7%)           | 0.04†   |
| Transfer/emergent  | 2/34 (5.9%)             | 32/34 (94.1%)             |         |
| Drain              | 10/637 (1.6%)           | 627/637 (98.4%)           | 0.86†   |
| No drain           | 1/77 (1.3%)             | 76/77 (98.7%)             |         |
| Skin closure       |                         |                           | 0.50†   |
| Staples only       | 9/619 (1.5%)            | 610/619 (98.5%)           |         |
| Suture only        | 2/67 (3.0%)             | 65/67 (97.0%)             |         |
| Staples + suture   | 0/28 (0%)               | 28/28 (100%)              |         |

BMI, body mass index; SSI, surgical site infection; XRT, radiation therapy

\* t-test

†  $\chi^2$  test

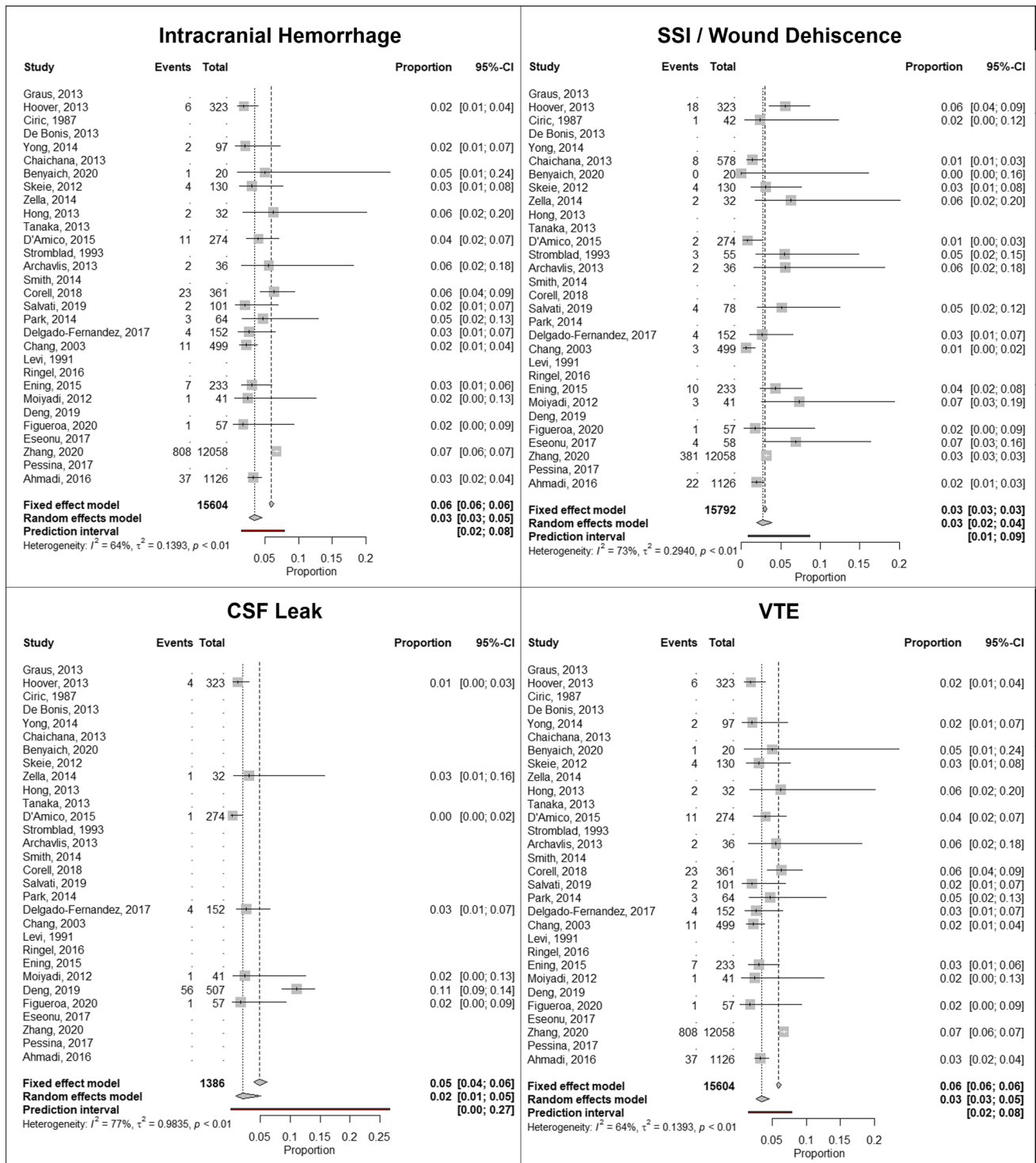


**Fig. 2** Forest plot analysis of overall complication rate by number of prior craniotomies

related to microvascular disease associated with this disease context and warrants further investigation.

Surgeon case volume has previously been associated with improved patient outcomes in a variety of neurosurgical

disease contexts [12, 36]. Within this single-surgeon cohort, rates of complications were similar between initial and repeat craniotomies suggesting that consistent implementation of “best-practice” techniques can help achieve low



**Fig. 3** Forest plot analysis of specific complications including intracranial hemorrhage, SSI/wound dehiscence, CSF leak, and venous thromboembolism (VTE)

complications rates and allow repeat craniotomies to be safe. The surgical techniques described above detail our practice and experience with strategies to minimize complications during reoperations. However, other surgeons may have

alternative methods that they have found to minimize complications. When a complication event occurs, the triggering issues must be identified, and adjustments in practice must be made to avoid similar subsequent events. This process

requires that neurosurgeons monitor their own complications over the course of their own careers. By doing so, techniques and management decision may be tailored to promote better patient outcomes.

There are several limitations to this study. Complications were assessed retrospectively based on documentation within the electronic medical record. Inherent to all systematic meta-analyses, there may be reporting and publication bias present. Furthermore, we could not control for case difficulty across studies, tumor biology and patient comorbidities and variations in adjuvant treatment practices. Being a single-surgeon series may limit the generalizability of these results. However, this single surgeon's experience also limited variability in practice, with the goal of describing "best practice" techniques that could be used to achieve low surgical and medical operative morbidity when resecting recurrent glioma.

## Conclusions

In this single-surgeon series, the complication profile in patients undergoing repeat craniotomy for gliomas was similar to patients undergoing primary resection and can be kept to a low level. The development of best practices over one's career can help mitigate complications and allow resection of recurrent glioma through a repeat craniotomy to be safely performed.

**Supplementary Information** The online version contains supplementary material available at <https://doi.org/10.1007/s00701-021-05067-9>.

**Acknowledgements** We would like to thank Ken Probst for his artistic contributions to the figure in the manuscript.

**Author contribution** Conceptualization: Ramin A. Morshed MD, Jacob S. Young MD, Mitchel S. Berger MD; methodology: Ramin A. Morshed MD, Jacob S. Young MD, Andrew J. Gogos, Annette M. Molinaro, Mitchel S. Berger MD; formal analysis and investigation: Ramin A. Morshed MD, Jacob S. Young MD, Andrew J. Gogos, Annette M. Molinaro, Mitchel S. Berger MD; data acquisition: Ramin A. Morshed MD, Jacob S. Young MD, Andrew J. Gogos MD, Alexander F. Haddad MD, James T. McMahon MD, Vivek Sudhakar MD, Nadeem Al-Adli; writing—original draft preparation: Ramin A. Morshed MD, Jacob S. Young MD, Mitchel S. Berger MD; writing—review and editing: Ramin A. Morshed MD, Jacob S. Young MD, Shawn L. Hervey-Jumper MD, Mitchel S. Berger MD; funding acquisition: not applicable; resources: not applicable; supervision: Mitchel S. Berger MD.

**Funding** This work was supported by the Robert Wood Johnson Foundation 74259 (SHJ), NINDS K08 110919–01 (SHJ), National Center for Advancing Translational Sciences of the NIH (RAM), and Neurosurgery Research and Education Foundation (RAM).

**Data availability** May provide as supplemental data if accepted.

**Code availability** Not applicable.

## Declarations

**Ethics approval and consent to participate** This study was approved by the institutional review board (Study Number 15–17500). All patients were de-identified for the purposes of the study. Informed consent was obtained from all individual participants included in the study.

**Consent of publication** All patients were de-identified for the purposes of the study. Informed consent was obtained from all individual participants included in the study.

**Conflict of interest** The authors declare no competing interests.

**Open Access** This article is licensed under a Creative Commons Attribution 4.0 International License, which permits use, sharing, adaptation, distribution and reproduction in any medium or format, as long as you give appropriate credit to the original author(s) and the source, provide a link to the Creative Commons licence, and indicate if changes were made. The images or other third party material in this article are included in the article's Creative Commons licence, unless indicated otherwise in a credit line to the material. If material is not included in the article's Creative Commons licence and your intended use is not permitted by statutory regulation or exceeds the permitted use, you will need to obtain permission directly from the copyright holder. To view a copy of this licence, visit <http://creativecommons.org/licenses/by/4.0/>.

## References

- Ahmadi R, Campos B, Haux D, Rieke J, Beigel B, Unterberg A (2016) Assessing perioperative complications associated with use of intraoperative magnetic resonance imaging during glioma surgery—a single centre experience with 516 cases. *Br J Neurosurg* 30(4):397–400
- Archavlis E, Tselis N, Birn G, Ulrich P, Baltas D, Zamboglou N (2013) Survival analysis of HDR brachytherapy versus reoperation versus temozolomide alone: a retrospective cohort analysis of recurrent glioblastoma multiforme. *BMJ Open*. <https://doi.org/10.1136/bmjopen-2012-002262>
- Barker FG 2nd, Chang SM, Gutin PH, Malec MK, McDermott MW, Prados MD, Wilson CB (1998) Survival and functional status after resection of recurrent glioblastoma multiforme. *Neurosurgery* 42(4):703–709
- Benyaich Z, Hajhouji F, Laghmar M, Ghannane H, Aniba K, Lmejjati M, Ait Benali S (2020) Awake craniotomy with functional mapping for glioma resection in a limited-resource setting: preliminary experience from a lower-middle income country. *World neurosurgery* 139:200–207
- Bloch O, Han SJ, Cha S, Sun MZ, Aghi MK, McDermott MW, Berger MS, Parsa AT (2012) Impact of extent of resection for recurrent glioblastoma on overall survival: clinical article. *J Neurosurg* 117(6):1032–1038
- De Bonis P, Fiorentino A, Anile C, Balducci M, Pompucci A, Chiesa S, Sica G, Lama G, Maira G, Mangiola A (2013) The impact of repeated surgery and adjuvant therapy on survival for patients with recurrent glioblastoma. *Clin Neurol Neurosurg* 115(7):883–886
- Chaichana KL, Zadnik P, Weingart JD, Olivi A, Gallia GL, Blakeley J, Lim M, Brem H, Quiñones-Hinojosa A (2013) Multiple resections for patients with glioblastoma: prolonging survival. *J Neurosurg* 118(4):812–820
- Chang SM, Parney IF, McDermott M et al (2003) Perioperative complications and neurological outcomes of first and second

- craniotomies among patients enrolled in the Glioma Outcome Project. *J Neurosurg* 98(6):1175–1181
9. Ciric I, Ammirati M, Vick N, Mikhael M (1987) Supratentorial gliomas: surgical considerations and immediate postoperative results. Gross total resection versus partial resection. *Neurosurgery* 21(1):21–26
  10. Corell A, Carstam L, Smits A, Henriksson R, Jakola AS (2018) Age and surgical outcome of low-grade glioma in Sweden. *Acta Neurol Scand* 138(4):359–368
  11. D'Amico RS, Cloney MB, Sonabend AM, Zacharia B, Nazarian MN, Iwamoto FM, Sisti MB, Bruce JN, McKhann GM 2nd (2015) The safety of surgery in elderly patients with primary and recurrent glioblastoma. *World neurosurgery* 84(4):913–919
  12. Davies JM, Lawton MT (2017) Improved outcomes for patients with cerebrovascular malformations at high-volume centers: the impact of surgeon and hospital volume in the United States, 2000–2009. *J Neurosurg* 127(1):69–80
  13. Delgado-Fernandez J, Garcia-Pallero MÁ, Blasco G, Penanes JR, Gil-Simoes R, Pulido P, Sola RG (2017) Usefulness of reintervention in recurrent glioblastoma: an indispensable weapon for increasing survival. *World neurosurgery* 108:610–617
  14. Deng Z, Wu W, Wang N et al (2019) Emergency glioma resection but not hours of operation predicts perioperative complications: a single center study. *Clin Neurol Neurosurg* 182:11–16
  15. Ening G, Huynh MT, Schmieder K, Brenke C (2015) Repeat-surgery at glioblastoma recurrence, when and why to operate? *Clin Neurol Neurosurg* 136:89–94
  16. Ening G, Osterheld F, Capper D, Schmieder K, Brenke C (2015) Risk factors for glioblastoma therapy associated complications. *Clin Neurol Neurosurg* 134:55–59
  17. Eseonu CI, Rincon-Torroella J, ReFaey K, Lee YM, Nangiana J, Vivas-Buitrago T, Quiñones-Hinojosa A (2017) Awake craniotomy vs craniotomy under general anesthesia for perirolandic gliomas: evaluating perioperative complications and extent of resection. *Neurosurgery* 81(3):481–489
  18. Figueroa J, Morell A, Bowory V, Shah AH, Eichberg D, Buttrick SS, Richardson A, Sarkiss C, Ivan ME, Komotar RJ (2020) Minimally invasive keyhole temporal lobectomy approach for supramaximal glioma resection: a safety and feasibility study. *J Clin Neurosci* 72:57–62
  19. Graus F, Bruna J, Pardo J et al (2013) Patterns of care and outcome for patients with glioblastoma diagnosed during 2008–2010 in Spain. *Neuro Oncol* 15(6):797–805
  20. Harsh GR 4th, Levin VA, Gutin PH, Seager M, Silver P, Wilson CB (1987) Reoperation for recurrent glioblastoma and anaplastic astrocytoma. *Neurosurgery* 21(5):615–621
  21. Hong B, Wiese B, Bremer M, Heissler HE, Heidenreich F, Krauss JK, Nakamura M (2013) Multiple microsurgical resections for repeated recurrence of glioblastoma multiforme. *Am J Clin Oncol* 36(3):261–268
  22. Hoover JM, Nwojo M, Puffer R, Mandrekar J, Meyer FB, Parney IF (2013) Surgical outcomes in recurrent glioma: clinical article. *J Neurosurg* 118(6):1224–1231
  23. Laperriere N, Weller M, Stupp R, Perry JR, Brandes AA, Wick W, van den Bent MJ (2013) Optimal management of elderly patients with glioblastoma. *Cancer Treat Rev* 39(4):350–357
  24. Levi AD, Wallace MC, Bernstein M, Walters BC (1991) Venous thromboembolism after brain tumor surgery: a retrospective review. *Neurosurgery* 28(6):859–863
  25. Magill ST, Dalle Ore CL, Diaz MA, Jalili DD, Raleigh DR, Aghi MK, Theodosopoulos P V, McDermott MW (2018) Surgical outcomes after reoperation for recurrent non-skull base meningiomas. *J Neurosurg* 1–9
  26. Mallela AN, Abdullah KG, Brandon C, Richardson AG, Lucas TH (2018) Topical vancomycin reduces surgical-site infections after craniotomy: a prospective, controlled study. *Neurosurgery* 83(4):761–767
  27. Moiyadi AV, Shetty PM (2012) Surgery for recurrent malignant gliomas: feasibility and perioperative outcomes. *Neurol India* 60(2):185–190
  28. Molinaro AM, Hervey-Jumper S, Morshed RA et al (2020) Association of maximal extent of resection of contrast-enhanced and non-contrast-enhanced tumor with survival within molecular subgroups of patients with newly diagnosed glioblastoma. *JAMA Oncol* 6(4):495–503
  29. Morshed RA, Young JS, Han SJ, Hervey-Jumper SL, Berger MS (2018) Perioperative outcomes following reoperation for recurrent insular gliomas. *J Neurosurg* 131(2):467–473
  30. Morshed RA, Young JS, Han SJ, Hervey-Jumper SL, Berger MS (2019) The transcortical equatorial approach for gliomas of the mesial temporal lobe: techniques and functional outcomes. *J Neurosurg*. <https://doi.org/10.3171/2017.10.JNS172055>
  31. Oppenlander ME, Wolf AB, Snyder LA et al (2014) An extent of resection threshold for recurrent glioblastoma and its risk for neurological morbidity. *J Neurosurg* 120(4):846–853
  32. Pessina F, Navarria P, Cozzi L, Ascolese AM, Simonelli M, Santoro A, Clerici E, Rossi M, Scorsetti M, Bello L (2017) Maximize surgical resection beyond contrast-enhancing boundaries in newly diagnosed glioblastoma multiforme: is it useful and safe? A single institution retrospective experience. *J Neurooncol* 135(1):129–139
  33. Ringel F, Pape H, Sabel M et al (2016) Clinical benefit from resection of recurrent glioblastomas: results of a multicenter study including 503 patients with recurrent glioblastomas undergoing surgical resection. *Neuro Oncol* 18(1):96–104
  34. Salvati M, Pesce A, Palmieri M, Floriana Brunetto GM, Santoro A, Frati A (2019) The role and real effect of an iterative surgical approach for the management of recurrent high-grade glioma: an observational analytic cohort study. *World neurosurgery*. <https://doi.org/10.1016/j.wneu.2018.12.118>
  35. Samis Zella MA, Wallocha M, Slotty PJ, Isik G, Hänggi D, Schroeteler J, Ewelt C, Steiger H-J, Sabel M (2014) Evaluation of post-operative complications associated with repeat resection and BCNU wafer implantation in recurrent glioblastoma. *Acta Neurochir* 156(2):313–323
  36. Simon MS, Du W, Flaherty L, Philip PA, Lorusso P, Miree C, Smith D, Brown DR (2004) Factors associated with breast cancer clinical trials participation and enrollment at a large academic medical center. *J Clin Oncol* 22(11):2046–2052
  37. Skeie BS, Enger PØ, Brøgger J, Ganz JC, Thorsen F, Heggdal JJ, Pedersen P-H (2012)  $\gamma$  knife surgery versus reoperation for recurrent glioblastoma multiforme. *World neurosurgery* 78(6):658–669
  38. Smith JS, Chang EF, Lamborn KR, Chang SM, Prados MD, Cha S, Tihan T, Vandenberg S, McDermott MW, Berger MS (2008) Role of extent of resection in the long-term outcome of low-grade hemispheric gliomas. *J Clin Oncol* 26(8):1338–1345
  39. Smith TR, Lall RR, Graham RB, McClelland JJ, Lall RR, Nanney AD, Adel JG, Zakarija A, Chandler JP (2014) Venous thromboembolism in high grade glioma among surgical patients: results from a single center over a 10 year period. *J Neurooncol* 120(2):347–352
  40. Strömblad LG, Anderson H, Malmström P, Salford LG (1993) Reoperation for malignant astrocytomas: personal experience and a review of the literature. *Br J Neurosurg* 7(6):623–633
  41. Sughrue ME, Sheean T, Bonney PA, Maurer AJ, Teo C (2015) Aggressive repeat surgery for focally recurrent primary

- glioblastoma: outcomes and theoretical framework. *Neurosurg Focus* 38(3):E11
42. Tanaka S, Meyer FB, Buckner JC, Uhm JH, Yan ES, Parney IF (2013) Presentation, management, and outcome of newly diagnosed glioblastoma in elderly patients. *J Neurosurg* 118(4):786–798
  43. Yong RL, Wu T, Mihatov N, Shen MJ, Brown MA, Zaghoul KA, Park GE, Park JK (2014) Residual tumor volume and patient survival following reoperation for recurrent glioblastoma. *J Neurosurg* 121(4):802–809
  44. Zattra CM, Zhang DY, Broggi M et al (2019) Repeated craniotomies for intracranial tumors: is the risk increased? Pooled analysis of two prospective, institutional registries of complications and outcomes. *J Neurooncol* 142(1):49–57
  45. Zhang Y, Zhang M, Lin M, Gephart MH, Veeravagu A, Ratliff JK, Li G (2020) Costs and complications associated with resection of supratentorial tumors with and without the operative microscope in the United States. *World neurosurgery* 138:e607–e619

**Publisher's note** Springer Nature remains neutral with regard to jurisdictional claims in published maps and institutional affiliations.