

Prevalence and outcome of dual aortic stenosis and cardiac amyloid pathology in patients referred for transcatheter aortic valve implantation

Paul R. Scully^{1,2}, Kush P. Patel ^{1,2}, Thomas A. Treibel ^{1,2}, George D. Thornton ¹, Rebecca K. Hughes ^{1,2}, Sucharitha Chadalavada ¹, Michail Katsoulis ³, Neil Hartman⁴, Marianna Fontana ⁵, Francesca Pugliese ^{1,6}, Nikant Sabharwal ⁷, James D. Newton ⁷, Andrew Kelion⁷, Muhiddin Ozkor¹, Simon Kennon¹, Michael Mullen¹, Guy Lloyd^{1,2,6}, Leon J. Menezes^{1,8,9}, Philip N. Hawkins⁵, and James C. Moon^{1,2*}

¹Barts Heart Centre, St Bartholomew's Hospital, West Smithfield, London EC1A 7BE, UK; ²Institute of Cardiovascular Science, University College London, Gower Street, London WC1E 6BT, UK; ³Institute of Health Informatics, University College London, 222 Euston Road, London NW1 2DA, UK; ⁴Nuclear Medicine, Abertawe Bro Morgannwg University Health Board, 4 Seaway Parade, Port Talbot SA12 7BR, UK; ⁵National Amyloidosis Centre, University College London, Rowland Hill Street, London NW3 2PF, UK; ⁶William Harvey Research Institute, Queen Mary University of London, Charterhouse Square, London EC1M 6BQ, UK; ⁷John Radcliffe Hospital, Oxford University Hospitals, Headley Way, Headington, Oxford OX3 9DU, UK; ⁸Institute of Nuclear Medicine, University College London, 235 Euston Road, London NW1 2BU, UK; and ⁹NIHR University College London Hospitals Biomedical Research Centre, 149 Tottenham Court Road, London W1T 7DN, UK

Received 28 September 2019; revised 7 December 2019; editorial decision 26 February 2020; accepted 5 March 2020; online publish-ahead-of-print 8 April 2020

See page 2768 for the editorial comment on this article (doi: 10.1093/eurheartj/ehaa458)

Aims

Cardiac amyloidosis is common in elderly patients with aortic stenosis (AS) referred for transcatheter aortic valve implantation (TAVI). We hypothesized that patients with dual aortic stenosis and cardiac amyloid pathology (AS-amyloid) would have different baseline characteristics, periprocedural and mortality outcomes.

Methods and results

Patients aged ≥ 75 with severe AS referred for TAVI at two sites underwent blinded bone scintigraphy prior to intervention (Perugini Grade 0 negative, 1–3 increasingly positive). Baseline assessment included echocardiography, electrocardiogram (ECG), blood tests, 6-min walk test, and health questionnaire, with periprocedural complications and mortality follow-up. Two hundred patients were recruited (aged 85 ± 5 years, 50% male). AS-amyloid was found in 26 (13%): 8 Grade 1, 18 Grade 2. AS-amyloid patients were older (88 ± 5 vs. 85 ± 5 years, $P = 0.001$), with reduced quality of life (EQ-5D-5L 50 vs. 65, $P = 0.04$). Left ventricular wall thickness was higher (14 mm vs. 13 mm, $P = 0.02$), ECG voltages lower (Sokolow–Lyon 1.9 ± 0.7 vs. 2.5 ± 0.9 mV, $P = 0.03$) with lower voltage/mass ratio (0.017 vs. 0.025 mV/g/m², $P = 0.03$). High-sensitivity troponin T and N-terminal pro-brain natriuretic peptide were higher (41 vs. 21 ng/L, $P < 0.001$; 3702 vs. 1254 ng/L, $P = 0.001$). Gender, comorbidities, 6-min walk distance, AS severity, prevalence of disproportionate hypertrophy, and post-TAVI complication rates (38% vs. 35%, $P = 0.82$) were the same. At a median follow-up of 19 (10–27) months, there was no mortality difference ($P = 0.71$). Transcatheter aortic valve implantation significantly improved outcome in the overall population ($P < 0.001$) and in those with AS-amyloid ($P = 0.03$).

Conclusions

AS-amyloid is common and differs from lone AS. Transcatheter aortic valve implantation significantly improved outcome in AS-amyloid, while periprocedural complications and mortality were similar to lone AS, suggesting that TAVI should not be denied to patients with AS-amyloid.

Keywords

Aortic stenosis • Cardiac amyloidosis • TAVI

* Corresponding author. Tel: +44 203 465 6115, Email: james.moon1@nhs.net

© The Author(s) 2020. Published by Oxford University Press on behalf of the European Society of Cardiology.

This is an Open Access article distributed under the terms of the Creative Commons Attribution License (<http://creativecommons.org/licenses/by/4.0/>), which permits unrestricted reuse, distribution, and reproduction in any medium, provided the original work is properly cited.

Introduction

Aortic stenosis (AS) is common, with nearly 5% of patients aged 75 and over having at least moderate AS.^{1,2} Symptomatic severe AS requires treatment, either in the form of surgical or transcatheter aortic valve replacement (TAVI), without which average survival is only 2–3 years.^{3–7} Transcatheter aortic valve implantation numbers are increasing worldwide, a trend that is likely to continue due both to the ageing population and the expanding role of the procedure itself to include intermediate⁸ and even low-risk populations.⁹ Cardiac amyloidosis (CA) is also common, particularly in elderly males, with wild-type transthyretin amyloid (ATTR) deposits seen in the heart at autopsy in 25% of patients aged 85 and over.¹⁰ So, it follows that CA is likely to co-exist in a significant proportion of elderly patients with AS. There is now a non-invasive diagnostic strategy for ATTR-CA, supported by recent expert consensus recommendations^{11,12}: bone scintigraphy (^{99m}Tc-3,3-diphosphono-1,2-propanodicarboxylic acid, DPD; ^{99m}Tc-pyrophosphate; or ^{99m}Tc-hydroxymethylene diphosphonate) coupled with a negative search for a plasma cell dyscrasia.^{11,12} Several studies have shown a prevalence of dual aortic stenosis and cardiac amyloid pathology (AS-amyloid) of 14–16% in elderly TAVI patients,^{13,14} but outcome data are not yet available. Transcatheter aortic valve implantation in AS-amyloid may be futile if outcome post-TAVI is no better than medical management.¹⁵ The most comprehensive paper showed that AS-amyloid was more common in men and was associated with a low-flow, low-gradient AS.^{14,16} However, recruited patients were more male than typical TAVI populations, the number referred clinically (i.e. with potential bias) is unclear, and bone scintigraphy was performed pragmatically after TAVI, so periprocedural complications preventing recruitment (e.g. mortality) would not be captured.¹⁴

By recruiting pre-procedure with blinding of the TAVI team to the bone scintigraphy results, we aimed to confirm the prevalence of AS-amyloid across two sites in the elderly referred for TAVI and identify its differences to lone AS for presentation, periprocedural complications and mortality.

Methods

This work forms part of ATTRact-AS (*a study investigating the role of occult cardiac amyloid in the elderly with aortic stenosis*, NCT03029026). This study complies with the Declaration of Helsinki, relevant local ethics and site approvals were obtained and all patients provided informed consent. Recruitment took place across two sites: Barts Heart Centre, London (October 2016 to January 2019) and John Radcliffe Hospital, Oxford (January 2018 to June 2019). To reduce bias, recruitment took place when referred for TAVI, but typically before the multidisciplinary team meeting. We therefore anticipated some cross-over to medical therapy and rarely to surgical valve replacement, which occurred. Baseline assessment included blood tests for high-sensitivity troponin T (hsTnT) and N-terminal pro-brain natriuretic peptide (NT-proBNP), a 6-min walk test and EQ-5D-5L health questionnaire in addition to routine clinical care—including electrocardiogram (ECG) and echocardiogram.

Electrocardiogram

Sokolow–Lyon criteria was calculated as the sum of the voltage of the S-wave in lead V1 and the R-wave in lead V5 or V6 (whichever was

greater).¹⁷ The voltage/mass ratio (V/M ratio) was defined as the Sokolow–Lyon total divided by the indexed left ventricular (LV) mass by echocardiography.¹⁸ Low limb lead voltages were defined as all limb leads with an amplitude ≤ 0.5 mV.

Echocardiography

All patients underwent clinical transthoracic echocardiogram, primarily for assessment of AS severity (including aortic valve peak velocity, mean gradient, and valve area quantification), any concomitant valve pathology, left and right ventricular systolic and left ventricular diastolic, according to the local protocol, which is based on the American Society of Echocardiography, the British Society of Echocardiography, as well as the European Association of Cardiovascular Imaging guidelines.^{19–21} Left ventricular ejection fraction (LVEF) was calculated using Simpson's biplane whenever possible, or otherwise quantified visually. Stroke volume (SV) was quantified using the left ventricular outflow tract (LVOT) velocity time integral and the LVOT diameter and then indexed to body surface area. Relative wall thickness was defined as: $(2 \times \text{posterior wall thickness}) / (\text{LV internal diameter at end-diastole})$.²² Left ventricular mass was calculated using the formula from Devereux et al.²³:

$$\text{LV mass} = 0.8 \times 1.04 \times [(\text{IVSd} + \text{LVIDd} + \text{PWd})^3 - \text{LVIDd}^3] + 0.6$$

Where IVSd is the interventricular septal diameter, LVIDd is the left ventricular internal dimension in diastole, and PWd is the posterior wall diameter, all measured in 2D. Longitudinal strain analysis was performed offline by an accredited echocardiographer using Tomtec software.

Myocardial contraction fraction (MCF), which indexed the SV to the myocardial volume, was calculated as previously described.²⁴ Disproportionate hypertrophy was defined as an IVSd greater than 1.9 cm in males or 1.6 cm in females. 'Classical' low-flow, low-gradient was defined as an aortic valve area ≤ 1.0 cm², with an LVEF $< 50\%$, an indexed SV < 35 mL/m², a peak aortic valve velocity < 4 m/s, and a mean gradient < 40 mmHg, conversely 'paradoxical' low-flow, low-gradient was defined as an LVEF $\geq 50\%$, but an indexed SV < 35 mL/m², peak velocity < 4 m/s, and mean gradient < 40 mmHg.^{19,25} Where equivocal, AS severity was adjudicated using low-dose dobutamine stress echocardiography, the computed tomography (CT)-derived aortic valve calcium score or by clinical assessment.^{19,25,26}

DPD scintigraphy

All DPD scans were performed using a hybrid Phillips Brightview single-photon emission computed tomography (SPECT)–CT gamma camera, a Siemens Symbia gamma camera or Pulse CDC gamma camera (IS2) following the injection of 700 MBq DPD. The imaging protocol consisted of an optional early (5 min, not performed at the Oxford site) and a late (3 h) planar whole-body image, with a SPECT/CT (or SPECT only) of the chest at 3 h. DPD scans were reported by two experienced clinicians using the Perugini grading system,²⁷ where Grade 0 represents no cardiac uptake with normal bone uptake (i.e. negative) and Grades 1–3 represent increasing cardiac uptake with increasing bone attenuation (*Figure 1*). DPD scan findings were also independently reviewed by the National Amyloidosis Centre (NAC). The managing clinicians were blinded to the results of the DPD scan until after the patient's TAVI procedure (or decision for medical management was made) unless the scan had been requested clinically ($n = 16$, 8%) or there was evidence of a plasma cell dyscrasia on serum free light chains, serum and urine immunofixation (sent when the DPD scan was confirmed positive). All patients with a positive DPD scan were discussed with NAC and, where appropriate, referred for further review. Detailed clinical review for those patients seen at the NAC with a plasma cell dyscrasia included: clinical history and examination, cardiovascular magnetic resonance (where appropriate),

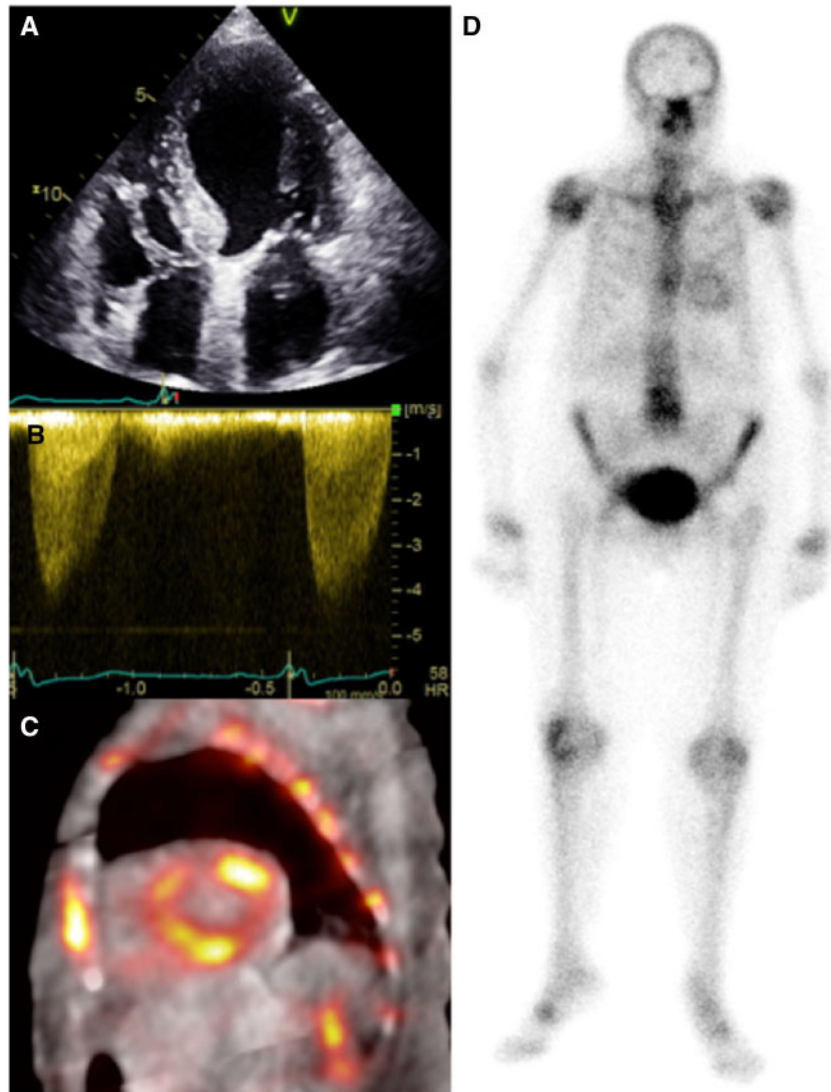


Figure 1 A 90-year-old man with severe aortic stenosis referred for transcatheter aortic valve implantation. Apical four-chamber echocardiography (A) shows normal biventricular size with mild left ventricular hypertrophy (1.3 cm basal septum). Continuous-wave Doppler confirmed severe aortic stenosis (peak velocity > 4 m/s) (B). The ^{99m}Tc -3,3-diphosphono-1,2-propanodicarboxylic acid fused single-photon emission computed tomography/computed tomography short-axis (C) confirms diffuse cardiac retention of tracer, visible also on the planar image (D), compatible with Perugini grade 2.

serum amyloid P scintigraphy, fat biopsy, genotyping, 6-min walk test, and serum biomarkers.

Periprocedural complication

Periprocedural complications were defined using the Valve Academic Research Consortium-2 (VARC-2) criteria and occurred *prior* to discharge, except one occurring within 2 months of the procedure.²⁸ Mild TAVI aortic valve stenosis was defined using the VARC-2 criteria as a peak velocity ≥ 3 m/s or a mean gradient ≥ 20 mmHg and moderate/severe AS was defined as a peak velocity >4 m/s or a mean gradient >40 mmHg.²⁸ The degree of post-TAVI aortic regurgitation or AS was based on departmental echocardiography when available (rather than 'on table' imaging), which was performed in the majority of patients prior to discharge.

Follow-up

Follow-up was for mortality using national data via the National Health Service and was 100% complete.

Statistical analysis

Statistical analysis used IBM SPSS Statistics (Version 25) and Stata/SE (Version 15) software. Where appropriate, results are described as mean \pm standard deviation or median \pm interquartile range. Normality was initially assessed using the Kolmogorov–Smirnov test and then (when indicated) plotted on a histogram. Kruskal–Wallis one-way analysis of variance was used when comparing more than two groups as the omnibus test, with the Dunn–Bonferroni test for pairwise comparison. The Student's *t*-test or Mann–Whitney *U* test was used to compare

continuous variables and either χ^2 or Fisher's exact testing for categorical data. Univariate and multivariable analysis was performed using binary logistic regression with the presence of AS-amyloid as the dependent variable. A two-sided P -value <0.05 was considered significant.

Results

Two hundred patients (mean age 85 ± 5 years, 50% male) were recruited. Comorbidities (hypertension, hypercholesterolaemia, diabetes, pre-intervention atrial fibrillation, and permanent pacemaker) were common (Table 1). Baseline LVEF was $54 \pm 11\%$, aortic valve measurements were: peak velocity 4.13 ± 0.65 m/s, mean gradient 41 ± 14 mmHg, area 0.73 ± 0.22 cm². One hundred and forty-nine (75%) patients had undergone TAVI, 2 (1%) surgical aortic valve replacement, and 49 (24%) were being managed medically (15 were for conservative management; the remainder for ongoing surveillance).

AS-amyloid prevalence and type

AS-amyloid was found in 26 patients, a prevalence of 13% (95% confidence interval 9–18%). The amyloid burden was skewed with no patients with a DPD Perugini Grade 3, but more with Grade 2 than Grade 1 (Grade 1 in 8, Grade 2 in 18, and Grade 3 in 0). A plasma cell dyscrasia was detected in 6 (23%), necessitating unblinding and a referral to the National Amyloidosis Centre, but following detailed review (as described in the methods), AL amyloid was felt unlikely in all cases. All genotyped patients to date ($n = 12$) were wild-type ATTR.

AS-amyloid vs. lone AS baseline

AS-amyloid patients were 3 years older (88.1 ± 5 vs. 84.7 ± 5 years, $P = 0.001$) and slightly more male, but this did not reach clinical significance (62% vs. 48% male, $P = 0.19$). They had a reduced quality of life at baseline (EQ-5D-5L 50 vs. 65, $P = 0.04$), but the same 6-min walk distance (94 vs. 138 m, $P = 0.36$). There was no difference in comorbidities (Table 1). Both had the same aortic valve severity (peak velocity, mean gradient, and valve area) and the same degree of valve calcification by CT.

AS-amyloid had lower Sokolow–Lyon criteria (1.9 ± 0.7 vs. 2.5 ± 0.9 mV, $P = 0.03$) and more right bundle branch block (RBBB) (36% vs. 13%), but low limb lead voltages hardly occurred ($n = 5$ total, all lone AS).

When clinically identified, cardiac amyloidosis typically has marked echocardiographic changes. Here, with discovery by DPD scan and in the presence of severe AS and confounding comorbidities, differences were modest: wall thickness was 1–2 mm thicker with higher mass, but no difference in disproportionate hypertrophy ($P = 0.33$). There was no difference in the prevalence of either 'classical' (impaired LVEF) low-flow, low-gradient AS (12% vs. 9%, $P = 0.72$) or 'paradoxical' (normal LVEF) low-flow, low-gradient AS (19% vs. 15%, $P = 0.57$). Mitral annular S' was slightly lower, but LVEF, SVs, global longitudinal strain, MCF, left atrial size, right ventricular function, and all other diastolic measures were the same. Combining ECG and echocardiography, the V/M ratio was lower (0.017 ± 0.007 vs. 0.025 ± 0.012 , $P = 0.03$). N-terminal pro-brain natriuretic peptide and hsTnT were approximately double: hsTnT 41 (25–84) ng/L vs. 21 (14–34) ng/L, $P < 0.001$ and NT-proBNP 3702 (1286–5626) ng/L vs. 1254 (598–2769) ng/L, $P = 0.001$, differences that were not related to

renal function. Both hsTnT and NT-proBNP had a dose–response curve with amyloid burden by DPD Perugini grade ($P < 0.001$ and 0.002, respectively for trends, Figure 2).

Using multivariable analysis, increasing age, troponin, and the presence of RBBB were associated with AS-amyloid (Table 2). Voltage/mass (V/M) ratio was also associated ($P = 0.045$); however, the analysis was performed separately (with age and gender) to avoid underpowering the main model, as the voltage component of the V/M ratio cannot be assessed in bundle branch block or ventricular paced rhythm, present in 30% (Supplementary material online, Table S3).

Periprocedural complications

In the 149 (75%) patients who underwent TAVI (16 AS-amyloid, 133 lone AS), complication rates were equivalent to published international trials.^{8,15} Using strict criteria and capturing all major and minor events via VARC-2, complications occurred at the same rate in AS-amyloid, $P = 0.77$ (Supplementary material online, Table S4). No patient died within the first 30 days post-TAVI.

Mortality

At a median follow-up post-DPD of 19 (10–27) months, 42 (21%) patients had died. AS-amyloid vs. lone AS mortality overall was 6 (23%) and 36 (21%), respectively, $P = 0.71$ (Figure 3A), with no difference by DPD Perugini grade, $P = 0.93$ (Supplementary material online, Figure S4). Importantly, TAVI improved outcome significantly in the overall cohort ($P < 0.001$) and in AS-amyloid alone ($P = 0.03$) compared to medical management (Figure 3B).

Discussion

These data show that AS-amyloid is common and affects around one in eight elderly patients with severe AS being considered for TAVI. It is different to lone AS with the patients being slightly older, with reduced quality of life (which may, in part, be explained by the age difference²⁹) elevated biomarkers, lower voltages, and lower voltage to mass ratio. Strikingly AS-amyloid appears different to lone ATTR-CA with the same prevalence in males and females, and Grade 2 is more common than Grade 1. Findings were also different to prior reports of AS-amyloid: with no difference in disproportionate hypertrophy and no higher prevalence of low-flow aortic stenosis. Periprocedural complications and mortality of AS-amyloid were the same as lone AS. Importantly, TAVI improved outcome in AS-amyloid significantly compared to medical management, disproving the preconception that TAVI may be futile in these patients.

Looking closer, the NT-proBNP and hsTnT elevations were both higher in AS-amyloid suggesting a potential role for these in the diagnostic work-up and surveillance, but ranges were wide. The DPD grade split is striking. This study effectively screened for an occult bystander disease. To discover that the higher burden of the disease (amyloid) is more prevalent than the lower burden (DPD Grade 2 69% vs. Grade 1 31%) does not fit a conventional model of amyloid accumulation and discovery by chance (Grade 1 should be more prevalent). We hypothesize that there is an interaction: the 'AS-primed' myocardium being pro the deposition of amyloid. The absence of DPD Grade 3 AS-amyloid in our cohort may suggest censoring by mortality, but this is beyond the scope of this study. Two

Table 1 Basic demographics, echo parameters, aortic valve calcium score and clinical parameters for patients with lone AS and those with dual pathology (AS-amyloid) prior to TAVI

	Overall (n = 200)	AS-amyloid (n = 26)	Lone AS (n = 174)	P-value
Demographics				
Male	99 (50%)	16 (62%)	83 (48%)	0.19
Age	85 ± 5	88 ± 5	85 ± 5	0.001
Clinical parameters				
Hypertension	154 (77%)	19 (73%)	135 (78%)	0.61
Hypercholesterolaemia	84 (42%)	9 (35%)	75 (43%)	0.41
Diabetes mellitus	48 (24%)	3 (12%)	45 (26%)	0.11
Atrial fibrillation	74 (37%)	11 (42%)	63 (36%)	0.55
Permanent pacemaker	23 (12%)	4 (15%)	19 (11%)	0.51
6-MWT (m)	123 (60–260)	94 (48–239)	138 (66–260)	0.36
Pre-TAVI QoL total	60 (50–75)	50 (40–69)	65 (50–75)	0.04
ECG parameters				
Heart rate (b.p.m.)	73 ± 16	70 ± 13	73 ± 16	0.32
Low-voltage limb leads	5 (3%)	0	5 (3%)	1.00
S-L criteria (mV)	2.5 ± 0.9	1.9 ± 0.7	2.5 ± 0.9	0.03
1st degree AV block ^a	35 (20%)	1 (5%)	34 (22%)	0.08
QRS duration (ms)	110 ± 28	118 ± 27	109 ± 28	0.16
LBBB ^a	20 (11%)	1 (5%)	19 (12%)	0.48
RBBB ^a	28 (16%)	8 (36%)	20 (13%)	0.01
Echo parameters				
Left ventricle				
LVEF (%)	54 ± 11	54 ± 14	54 ± 11	0.99
Indexed SV (mL/m ²)	38 ± 11	34 ± 10	38 ± 11	0.12
IVS diameter (cm)	1.3 ± 0.3	1.4 ± 0.3	1.3 ± 0.2	0.02
Posterior wall (cm)	1.1 ± 0.3	1.3 ± 0.4	1.1 ± 0.2	0.001
DPH	9 (5%)	2 (8%)	7 (4%)	0.33
RWV (cm)	0.51 ± 0.19	0.61 ± 0.28	0.50 ± 0.16	0.07
Indexed LV mass (g/m ²)	121 ± 38	136 ± 36	118 ± 38	0.03
MCF (%)	23.3 ± 8.9	20.3 ± 8.8	23.8 ± 8.8	0.08
Mitral annular S' (m/s)	0.06 ± 0.02	0.05 ± 0.01	0.06 ± 0.02	0.04
GLS (%)	-14 ± 6	-15 ± 6	-14 ± 6	0.29
Diastolic function				
E/A ratio	0.81 (0.69–1.32)	1.28 (0.75–2.15)	0.78 (0.68–1.22)	0.09
Lateral E/E'	17 ± 9	20 ± 13	16 ± 8	0.16
MV dec time (ms)	238 ± 86	241 ± 88	237 ± 86	0.84
LA diameter (cm)	4.2 ± 0.7	4.4 ± 0.6	4.1 ± 0.7	0.06
RV function				
TAPSE (cm)	1.9 ± 0.5	1.8 ± 0.5	1.9 ± 0.5	0.56
Aortic valve				
Peak velocity (m/s)	4.12 ± 0.64	3.95 ± 0.73	4.15 ± 0.62	0.15
Mean gradient (mmHg)	41 ± 14	37 ± 14	42 ± 14	0.12
AVA (cm ²)	0.73 ± 0.22	0.74 ± 0.23	0.73 ± 0.22	0.69
Classical LFLG AS	19 (10%)	3 (12%)	16 (9%)	0.72
Paradoxical LFLG AS	31 (16%)	5 (19%)	26 (15%)	0.57
Composite parameters				
V/M ratio (mV/g/m ²)	0.024 ± 0.012	0.017 ± 0.007	0.025 ± 0.012	0.03
CT parameters				
AV calcium score (HU)	2688 ± 1647	3149 ± 1916	2619 ± 1600	0.17
Blood results				
Creatinine (mmol/L)	107 ± 45	118 ± 38	105 ± 46	0.20
eGFR (mL/min/1.73 m ²)	55 ± 16	50 ± 14	56 ± 17	0.08

Continued

Table 1 Continued

	Overall (n = 200)	AS-amyloid (n = 26)	Lone AS (n = 174)	P-value
hsTnT (ng/L)	23 (15–37)	41 (25–84)	21 (14–34)	<0.001
NT-proBNP (ng/L)	1467 (640–3337)	3702 (1286–5626)	1254 (598–2769)	0.001

Values are represented as mean ± standard deviation or median (interquartile range) where appropriate. P-values <0.05 are shown in bold.

6-MWT, 6-min walk test; AS, aortic stenosis; AV, aortic valve; AVA, aortic valve area; DPH, disproportionate hypertrophy; eGFR, estimated glomerular filtration rate; GLS, global longitudinal strain; hsTnT, high-sensitivity troponin T; LBBB, left bundle branch block; LV, left ventricle; LVEF, left ventricular ejection fraction; MCF, myocardial contraction fraction; MV dec time, mitral valve deceleration time; NT-proBNP, N-terminal pro-brain natriuretic peptide; QoL, quality of life; RBBB, right bundle branch block; RWT, relative wall thickness; S-L, Sokolow–Lyon criteria; TAPSE, tricuspid annular plane systolic excursion; V/M, voltage/mass ratio.

^aMissing ECG data in 4 lone AS and 19 AS-amyloid patients—percentages and statistics quoted reflect this.

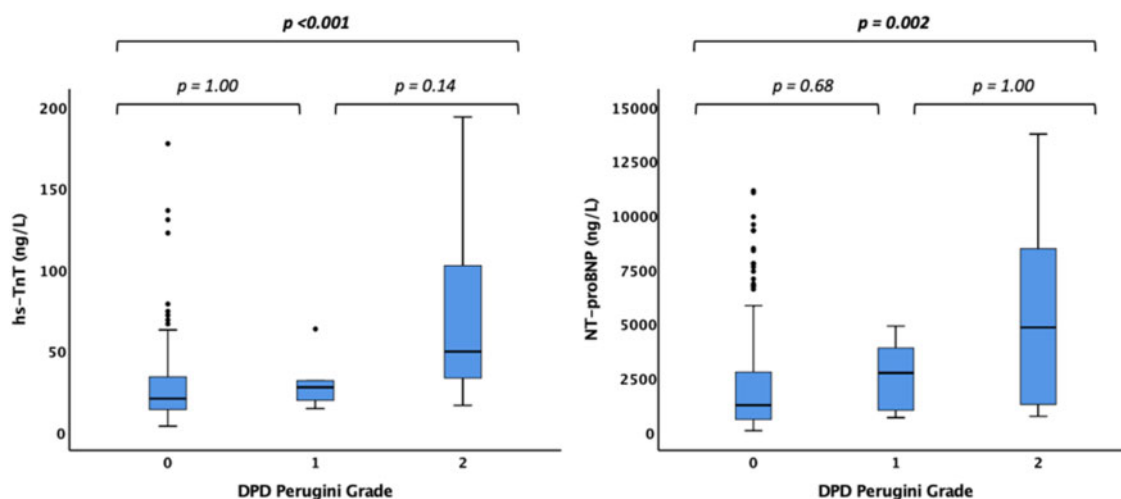


Figure 2 Box and whisker plots demonstrating elevated high-sensitivity troponin T (A) and N-terminal pro-brain natriuretic peptide (B) in AS-amyloid compared to lone aortic stenosis and with amyloid burden measured by ^{99m}Tc-3,3-diphosphono-1,2-propanodicarboxylic acid Perugini grade. Outliers with an high-sensitivity troponin T greater than 200 ng/L and an N-terminal pro-brain natriuretic peptide greater than 150 000 have been excluded from this figure, but included in the statistical analysis (n = 2 and n = 4, respectively). HsTnT, high-sensitivity troponin T; NT-proBNP, N-terminal pro-brain natriuretic peptide.

other observations support interaction: firstly, the discovered prevalence is higher than it is thought to be in healthy ageing and secondly, the lack of survival disadvantage (even though AS-amyloid patients are older) hints that TAVI could be treating the amyloid by reversing pro-amyloidogenic substrate changes. This work highlights our incomplete knowledge about amyloid prevalence in healthy ageing and raises other questions about whether, if AS primes the myocardium for amyloid deposition what other common cardiac conditions do the same? The similar male: female burden could be because AS primes the myocardial interstitium for amyloid regardless of gender, but it could also be that other studies have underestimated female involvement through referral bias and gender dimorphism in the male myocyte hypertrophic response (seen in AS³⁰ and Fabry disease³¹) meaning that for the same degree of infiltration, left ventricular hypertrophy is more manifest in males.

Importantly, the presence of dual AS and amyloid pathology was not associated with increased mortality. Transcatheter aortic valve implantation improved outcome significantly in AS-amyloid

compared to medical therapy, which is perhaps not unsurprising as it is unloading an already stiff ventricle. Whether this reduction in afterload would be beneficial in moderate AS with ATTR will require further studies—a concept that is being tested in heart failure with moderate AS in the TAVI-unload study (NCT02661451). Furthermore, given that AS-amyloid patients were older, with a worse baseline quality of life and markedly elevated biomarkers, this lack of increased mortality is striking, particularly given the increased mortality seen in patients with such dual pathology following surgical aortic valve replacement.³² We propose that there may be a protective effect of the TAVI in AS-amyloid—and that mechanical afterload reduction may actually rebalance amyloid deposition to regression, however, further study is needed. It is clear from this data that teams should not be withholding TAVI in AS-amyloid (wild-type ATTR-CA DPD Grade 1 or 2).

We have alluded to some unanswered questions about AS-amyloid biology, but there are many more. The elevated biomarkers clearly suggest this is disease, but whether some (especially Grade 1)

Table 2 Univariate and multivariable binary logistic regression analysis, showing that age, hsTnT and the presence of RBBB were all associated with the presence of AS-amyloid

Variables	Univariate analysis		Multivariable analysis		
	P-value	Exp (B)	P-value	Exp (B)	CI for Exp (B)
6-min walk (per m decrease)	0.48	1.00			
Age (per year increase)	0.002	1.15	0.04	1.13	1.00–1.27
AVA (per cm ² increase)	0.69	2.06			
AV mean PG (per mmHg decrease)	0.12	0.97			
AV V _{max} (per m/s decrease)	0.15	0.61			
AV calcium score (per HU increase)	0.18	1.00			
Baseline QoL (per unit decrease)	0.08	0.98			
E/A ratio (per unit increase)	0.03	1.67			
Gender (male)	0.19	1.75			
GLS (%)	0.29	0.96			
hsTnT (per ng/L increase)	0.001	1.02	0.03	1.02	1.00–1.03
Indexed LV mass (per g/m ² increase)	0.03	1.01			
Indexed SV (per mL/m ² decrease)	0.12	0.97			
IVSd (per cm increase)	0.02	6.66			
LA diameter (per cm increase)	0.07	1.90			
Lateral E/E' (per unit increase)	0.04	1.05	0.56	1.02	0.96–1.08
LBBB	0.29	0.33			
LVEF (per % decrease)	0.99	1.00			
MCF (per % decrease)	0.08	0.95			
Mitral annulus S' (per m/s decrease)	0.046	0.00	0.13	0.00	0.00–43 640.00
MV dec time (per ms increase)	0.84	1.00			
NT-proBNP (per ng/L increase)	0.06	1.00	0.41	1.00	1.00–1.00
PWd (per cm increase)	0.003	8.72	0.14	3.95	0.65–23.91
RBBB	0.01	3.42	0.005	6.88	1.81–26.21
RWT (per cm increase)	0.01	12.1			
S-L criteria (per mV decrease)	0.03	0.39			
TAPSE (per cm decrease)	0.56	0.76			
V/M ratio (per mV/g/m ² decrease)	0.03	0.00			

S-L criteria and E/A ratio were not included in the multivariable analysis as S-L criteria cannot be calculated with bundle branch block or paced rhythm (30% of all patients) and E/A ratio when AF is present (37% of patients). Only one parameter reflecting LV mass was used in the multivariable analysis to avoid confounding. P-values <0.05 are shown in bold. AV, aortic valve; AVA, aortic valve area; CI, 95% confidence interval; Exp (B), exponentiation of the B coefficient; GLS, global longitudinal strain; hsTnT, high-sensitivity troponin T; HU, Hounsfield units; IVSd, interventricular septum diameter; LV, left ventricle; LBBB, left bundle branch block; LVEF, left ventricular ejection fraction; MCF, myocardial contraction fraction; MV, mitral valve; NT-proBNP, N-terminal pro-brain natriuretic peptide; PWd, posterior wall diameter; RBBB, right bundle branch block; RWT, relative wall thickness; S-L, Sokolow-Lyon; TAPSE, tricuspid annular plane systolic excursion; V/M, voltage/mass ratio.

can sometimes be considered bystander is unknown. We do not know if patients receive the same functional benefit to intervention and how biomarkers respond, and we do not know if the amyloid burden changes. There are hints that AS-amyloid is not like 'typical' cardiac amyloid so we should not assume that the impact of amyloid-specific therapies such as tafamidis,³³ patisiran,³⁴ and inotersen³⁵ will be the same as in lone amyloid. Given the prevalence of AS and the rates of TAVI (which have now exceeded that of surgical aortic valve replacement), we suggest that a study of amyloid therapy in AS-amyloid is urgently needed.

Limitations

Blinding pre-procedure was broken for two reasons: seven patients had a plasma cell dyscrasia necessitating unblinding as per protocol and some

DPD scans were performed clinically ($n=16$)—we estimate that we would have recruited around half these patients anyway. Not all patients underwent TAVI, particularly in the AS-amyloid group. Follow-up was only mortality, and there was no short-term functional assessment. The study is underpowered to compare DPD Grade 1 to Grade 2.

Conclusions

AS-amyloid is common and affects around one in eight elderly patients with severe AS being considered for TAVI. It is different to lone AS but has unexpected features that require more investigation and there are suggestions of a biological interaction between the AS and the amyloid. TAVI significantly improved outcome in AS-amyloid, while periprocedural complications and mortality were similar to

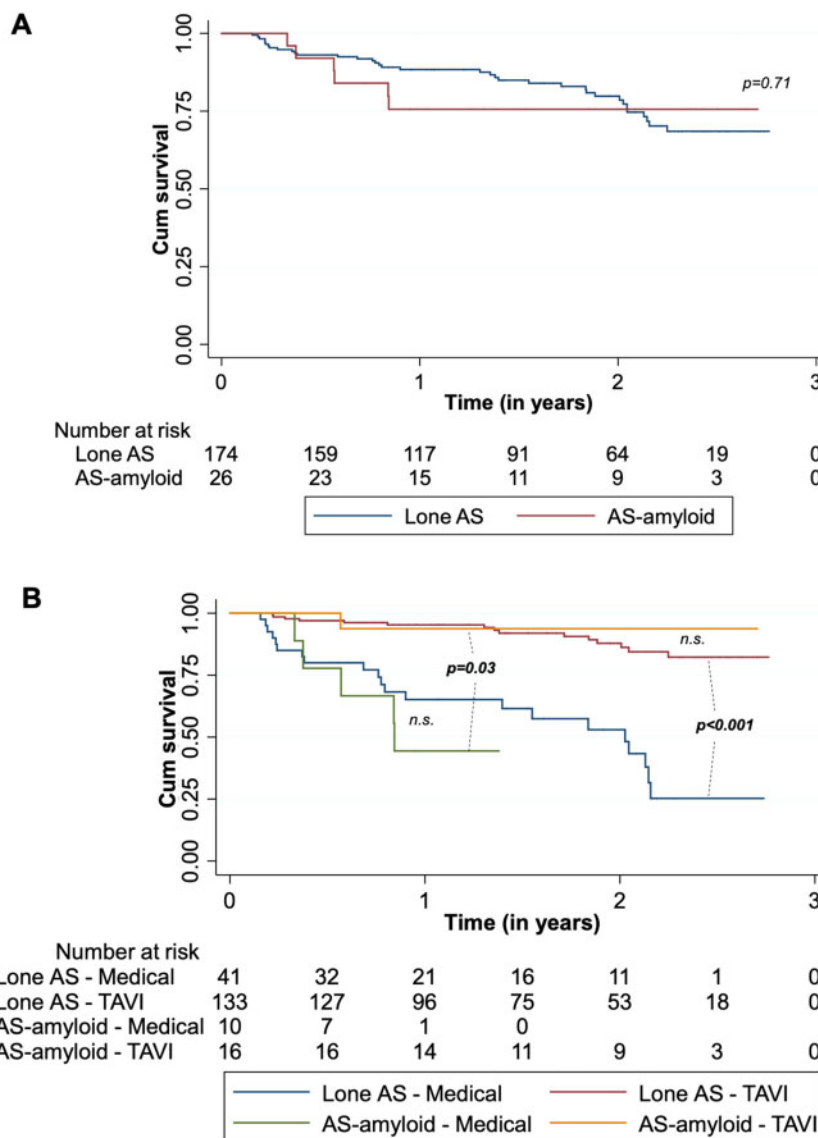


Figure 3 Kaplan–Meier survival curves over a median follow-up of 19 months (interquartile range 10–27 months) by lone AS vs. AS-amyloid ($P = 0.71$) (A) and by management strategy ($P = 0.03$ for transcatheter aortic valve implantation vs. medical management in AS-amyloid, $P < 0.001$ for Transcatheter aortic valve implantation vs. medical management in lone AS, $P = 0.48$ in the post-transcatheter aortic valve implantation arm for AS-amyloid vs. lone AS and $P = 0.39$ in the medical management arm for AS-amyloid vs. lone AS) (B).

lone AS, suggesting that TAVI should not be denied to patients with AS-amyloid.

Supplementary material

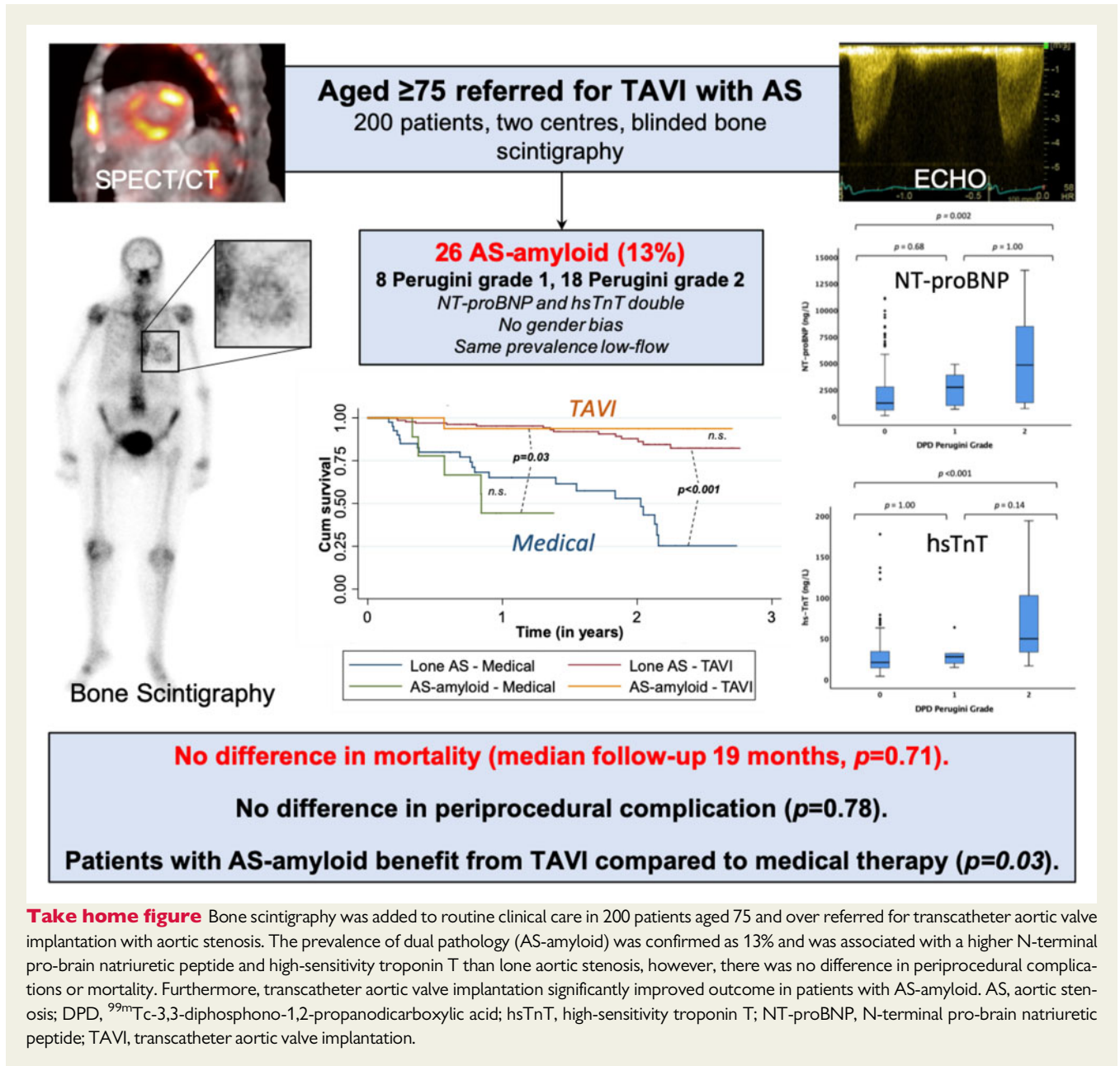
Supplementary material is available at *European Heart Journal* online.

Funding

This work was funded by a British Heart Foundation Clinical Research Training Fellowship for Dr Paul Scully (FS/16/31/32185).

Conflict of interest: P.R.S. is supported by a British Heart Foundation Clinical Research Training Fellowship (FS/16/31/32185).

K.P.P. is supported by an unrestricted educational grant from Edwards Lifesciences. T.A.T. is supported by a clinical lecturer grant from the National Institute of Health Research (NIHR, UK). F.P. has received research support from Siemens Healthineers and this work forms part of the translational research portfolio of the NIHR Cardiovascular Biomedical Research Centre at Barts Heart Centre, which is supported and funded by the NIHR. M.M. has received grants and personal fees from Edwards Lifesciences and personal fees from Abbott Vascular. J.C.M. is directly and indirectly supported by the UCLH NIHR Biomedical Research Centre and Biomedical Research Unit at UCLH and Barts, respectively. The remaining authors have no relevant conflict of interest.



References

- Lindroos M, Kupari M, Heikkilä J, Tilvis R. Prevalence of aortic valve abnormalities in the elderly: an echocardiographic study of a random population sample. *J Am Coll Cardiol* 1993;**21**:1220–1225.
- Thaden JJ, Nkomo VT, Enriquez-Sarano M. The global burden of aortic stenosis. *Prog Cardiovasc Dis* 2014;**56**:565–571.
- Ross J, Braunwald E. Aortic stenosis. *Circulation* 1968;**38**:61–67.
- Schwarz F, Baumann P, Manthey J, Hoffmann M, Schuler G, Mehmel HC, Schmitz W, Kübler W. The effect of aortic valve replacement on survival. *Circulation* 1982;**66**:1105–1110.
- Turina J, Hess O, Sepulcri F, Krayenbuehl HP. Spontaneous course of aortic valve disease. *Eur Heart J* 1987;**8**:471–483.
- Bonow RO, Carabello BA, Chatterjee K, de Leon AC, Faxon DP, Freed MD, Gaasch WH, Lytle BW, Nishimura RA, O’Gara PT, O’Rourke RA, Otto CM, Shah PM, Shanewise JS. ACC/AHA 2006 Guidelines for the management of patients with valvular heart disease: a report of the American College of Cardiology/American Heart Association Task Force on Practice Guidelines (Writing Committee to Revise the 1998 Guidelines for the Management of Patients With Valvular Heart Disease): developed in Collaboration With the Society of Cardiovascular Anesthesiologists: endorsed by the Society for Cardiovascular Angiography and Interventions and the Society of Thoracic Surgeons. *Circulation* 2006;**114**:e84–e231.
- Horstkotte D, Loogen F. The natural history of aortic valve stenosis. *Eur Heart J* 1988;**9**(Suppl E):57–64.
- Leon MB, Smith CR, Mack MJ, Makkar RR, Svensson LG, Kodali SK, Thourani VH, Tuzcu EM, Miller DC, Herrmann HC, Doshi D, Cohen DJ, Pichard AD, Kapadia S, Dewey T, Babaliaros V, Szeto WY, Williams MR, Kereiakes D, Zajarias A, Greason KL, Whisenant BK, Hodson RW, Moses JW, Trento A, Brown DL, Fearon WF, Pibarot P, Hahn RT, Jaber WA, Anderson WN, Alu MC, Webb JG. Transcatheter or surgical aortic-valve replacement in intermediate-risk patients. *N Engl J Med* 2016;**374**:1609–1620.
- Mack MJ, Leon MB, Thourani VH, Makkar R, Kodali SK, Russo M, Kapadia SR, Malaisrie SC, Cohen DJ, Pibarot P, Leipsic J, Hahn RT, Blanke P, Williams MR, McCabe JM, Brown DL, Babaliaros V, Goldman S, Szeto WY, Genereux P, Pershad A, Pocock SJ, Alu MC, Webb JG, Smith CR. Transcatheter aortic-valve replacement with a balloon-expandable valve in low-risk patients. *N Engl J Med* 2019;**380**:1695–1705.

10. Tanskanen M, Peuralinna T, Polvikoski T, Notkola I, Sulkava R, Hardy J, Singleton A, Kiuru-Enari S, Paetau A, Tienari PJ, Myllykangas L. Senile systemic amyloidosis affects 25% of the very aged and associates with genetic variation in alpha2-macroglobulin and tau: a population-based autopsy study. *Ann Med* 2008;**40**: 232–239.
11. Gillmore JD, Maurer MS, Falk RH, Merlini G, Damy T, Dispenzieri A, Wechalekar AD, Berk JL, Quarta CC, Grogan M, Lachmann HJ, Bokhari S, Castano A, Dorbala S, Johnson GB, Glaudemans A, Rezk T, Fontana M, Palladini G, Milani P, Guidalotti PL, Flatman K, Lane T, Vonberg FW, Whelan CJ, Moon JC, Ruberg FL, Miller EJ, Hutt DF, Hazenberg BP, Rapezzi C, Hawkins PN. Nonbiopsy diagnosis of cardiac transthyretin amyloidosis. *Circulation* 2016;**133**: 2404–2412.
12. Dorbala S, Ando Y, Bokhari S, Dispenzieri A, Falk RH, Ferrari VA, Fontana M, Gheysens O, Gillmore JD, Glaudemans A, Hanna MA, Hazenberg BPC, Kristen AV, Kwong RY, Maurer MS, Merlini G, Miller EJ, Moon JC, Murthy VL, Quarta CC, Rapezzi C, Ruberg FL, Shah SJ, Slart R, Verberne HJ, Bourque JM. ASNC/AHA/ASE/EANM/HFSA/ISA/SCMR/SNMMI expert consensus recommendations for multimodality imaging in cardiac amyloidosis: part 1 of 2—evidence base and standardized methods of imaging. *J Nucl Cardiol* 2019;**26**:2065–2123.
13. Scully PR, Treibel TA, Fontana M, Lloyd G, Mullen M, Pugliese F, Hartman N, Hawkins PN, Menezes LJ, Moon JC. Prevalence of cardiac amyloidosis in patients referred for transcatheter aortic valve replacement. *J Am Coll Cardiol* 2018;**71**: 463–464.
14. Castaño A, Narotsky DL, Hamid N, Khaliq OK, Morgenstern R, DeLuca A, Rubin J, Chiuzaan C, Nazif T, Vahl T, George I, Kodali S, Leon MB, Hahn R, Bokhari S, Maurer MS. Unveiling transthyretin cardiac amyloidosis and its predictors among elderly patients with severe aortic stenosis undergoing transcatheter aortic valve replacement. *Eur Heart J* 2017;**38**:2879–2887.
15. Leon MB, Smith CR, Mack M, Miller DC, Moses JW, Svensson LG, Tuzcu EM, Webb JG, Fontana GP, Makkar RR, Brown DL, Block PC, Guyton RA, Pichard AD, Bavaria JE, Herrmann HC, Douglas PS, Petersen JL, Akin JJ, Anderson WN, Wang D, Pocock S. Transcatheter aortic-valve implantation for aortic stenosis in patients who cannot undergo surgery. *N Engl J Med* 2010;**363**:1597–1607.
16. Cavalcante JL, Rijal S, Abdelkarim I, Althouse AD, Sharbaugh MS, Fridman Y, Soman P, Forman DE, Schindler JT, Gleason TG, Lee JS, Schelbert EB. Cardiac amyloidosis is prevalent in older patients with aortic stenosis and carries worse prognosis. *J Cardiovasc Magn Reson* 2017;**19**:98.
17. Sokolow M, Lyon TP. The ventricular complex in left ventricular hypertrophy as obtained by unipolar precordial and limb leads. *Am Heart J* 1949;**37**:161–186.
18. Carroll JD, Gaasch WH, McAdam KP. Amyloid cardiomyopathy: characterization by a distinctive voltage/mass relation. *Am J Cardiol* 1982;**49**:9–13.
19. Baumgartner H, Hung J, Bermejo J, Chambers JB, Edvardsen T, Goldstein S, Lancellotti P, LeFevre M, Miller F, Otto CM. Recommendations on the echocardiographic assessment of aortic valve stenosis: a focused update from the European Association of Cardiovascular Imaging and the American Society of Echocardiography. *J Am Soc Echocardiogr* 2017;**30**:372–392.
20. Wharton G, Steeds R, Allen J, Phillips H, Jones R, Kanagala P, Lloyd G, Masani N, Mathew T, Oxborough D, Rana B, Sandoval J, Wheeler R, O’Gallagher K, Sharma V. A minimum dataset for a standard adult transthoracic echocardiogram: a guideline protocol from the British Society of Echocardiography. *Echo Res Pract* 2015;**2**:G9–G24.
21. Nagueh SF, Smiseth OA, Appleton CP, Byrd BF, Dokainish H, Edvardsen T, Flachskampf FA, Gillebert TC, Klein AL, Lancellotti P, Marino P, Oh JK, Popescu BA, Waggoner AD. Recommendations for the evaluation of left ventricular diastolic function by echocardiography: an update from the American Society of Echocardiography and the European Association of Cardiovascular Imaging. *J Am Soc Echocardiogr* 2016;**29**:277–314.
22. Lang RM, Badano LP, Mor-Avi V, Afilalo J, Armstrong A, Ernande L, Flachskampf FA, Foster E, Goldstein SA, Kuznetsova T, Lancellotti P, Muraru D, Picard MH, Rietzschel ER, Rudski L, Spencer KT, Tsang W, Voigt J-U. Recommendations for cardiac chamber quantification by echocardiography in adults: an update from the American Society of Echocardiography and the European Association of Cardiovascular Imaging. *Eur Heart J Cardiovasc Imaging* 2015;**16**:233–271.
23. Devereux RB, Alonso DR, Lutas EM, Gottlieb GJ, Campo E, Sachs I, Reichel N. Echocardiographic assessment of left ventricular hypertrophy: comparison to necropsy findings. *Am J Cardiol* 1986;**57**:450–458.
24. Rubin J, Steidley DE, Carlsson M, Ong M-L, Maurer MS. Myocardial contraction fraction by M-mode echocardiography is superior to ejection fraction in predicting mortality in transthyretin amyloidosis. *J Card Fail* 2018;**24**:504–511.
25. Nishimura RA, Otto CM, Bonow RO, Carabello BA, Erwin JP, Guyton RA, O’Gara PT, Ruiz CE, Skubas NJ, Sorajja P, Sundt TM, Thomas JD. 2014 AHA/ACC Guideline for the management of patients with valvular heart disease: a report of the American College of Cardiology/American Heart Association Task Force on Practice Guidelines. *Circulation* 2014;**129**:e521–e643.
26. Clavel M-A, Messika-Zeitoun D, Pibarot P, Aggarwal SR, Malouf J, Araoz PA, Michelena HI, Cuffe C, Larose E, Capoulade R, Vahanian A, Enriquez-Sarano M. The complex nature of discordant severe calcified aortic valve disease grading. *J Am Coll Cardiol* 2013;**62**:2329–2338.
27. Perugini E, Guidalotti PL, Salvi F, Cooke RMT, Pettinato C, Riva L, Leone O, Farsad M, Ciliberti P, Bacchi-Reggiani L, Fallani F, Branzi A, Rapezzi C. Noninvasive etiologic diagnosis of cardiac amyloidosis using ^{99m}Tc-3,3-diphosphono-1,2-propanodicarboxylic acid scintigraphy. *J Am Coll Cardiol* 2005;**46**: 1076–1084.
28. Kappetein AP, Head SJ, Généreux P, Piazza N, van Mieghem NM, Blackstone EH, Brott TG, Cohen DJ, Cutlip DE, van Es G-A, Hahn RT, Kirtane AJ, Krucoff MW, Kodali S, Mack MJ, Mehran R, Rodés-Cabau J, Vranckx P, Webb JG, Windecker S, Serruys PW, Leon MB. Updated standardized endpoint definitions for transcatheter aortic valve implantation: the Valve Academic Research Consortium-2 consensus document. *Eur Heart J* 2012;**33**:2403–2418.
29. Janssen MF, Szende A, Cabases J, Ramos-Goñi JM, Vilagut G, König HH. Population norms for the EQ-5D-3L: a cross-country analysis of population surveys for 20 countries. *Eur J Health Econ* 2019;**20**:205–216.
30. Treibel TA, Kozor R, Fontana M, Torlasco C, Reant P, Badiani S, Espinoza M, Yap J, Diez J, Hughes AD, Lloyd G, Moon JC. Sex dimorphism in the myocardial response to aortic stenosis. *JACC Cardiovasc Imaging* 2018;**11**:962–973.
31. Nordin S, Kozor R, Medina-Menacho K, Abdel-Gadir A, Baig S, Sado DM, Lobascio I, Murphy E, Lachmann RH, Mehta A, Edwards NC, Ramaswami U, Steeds RP, Hughes D, Moon JC. Proposed stages of myocardial phenotype development in fabry disease. *JACC Cardiovasc Imaging* 2019;**12**:1673–1683.
32. Treibel TA, Fontana M, Gilbertson JA, Castelletti S, White SK, Scully PR, Roberts N, Hutt DF, Rowczenio DM, Whelan CJ, Ashworth MA, Gillmore JD, Hawkins PN, Moon JC. Occult transthyretin cardiac amyloid in severe calcific aortic stenosis: prevalence and prognosis in patients undergoing surgical aortic valve replacement. *Circ Cardiovasc Imaging* 2016;**9**:e005066.
33. Maurer MS, Schwartz JH, Gundapaneni B, Elliott PM, Merlini G, Waddington-Cruz M, Kristen AV, Grogan M, Witteles R, Damy T, Drachman BM, Shah SJ, Hanna M, Judge DP, Barsdorf AI, Huber P, Patterson TA, Riley S, Schumacher J, Stewart M, Sultan MB, Rapezzi C. Tafamidis treatment for patients with transthyretin amyloid cardiomyopathy. *N Engl J Med* 2018;**379**:1007–1016.
34. Solomon SD, Adams D, Kristen A, Grogan M, González-Duarte A, Maurer MS, Merlini G, Damy T, Slama MS, Brannagan TH, Dispenzieri A, Berk JL, Shah AM, Garg P, Vaishnav A, Karsten V, Chen J, Gollob J, Vest J, Suhr O. Effects of patisiran, an RNA interference therapeutic, on cardiac parameters in patients with hereditary transthyretin-mediated amyloidosis: analysis of the APOLLO study. *Circulation* 2019;**139**:431–443.
35. Dasgupta NR, Benson M. Improved survival of patients with transthyretin amyloid cardiomyopathy with inotersen (TTR specific antisense oligonucleotide). *J Am Coll Cardiol* 2019;**73**:811.