

RESEARCH ARTICLE

Open Access

# Complete mitogenome sequences of four flatfishes (Pleuronectiformes) reveal a novel gene arrangement of L-strand coding genes

Wei Shi<sup>1</sup>, Xiao-Li Dong<sup>2</sup>, Zhong-Ming Wang<sup>1,3</sup>, Xian-Guang Miao<sup>1</sup>, Shu-Ying Wang<sup>1</sup> and Xiao-Yu Kong<sup>1\*</sup>

## Abstract

**Background:** Few mitochondrial gene rearrangements are found in vertebrates and large-scale changes in these genomes occur even less frequently. It is difficult, therefore, to propose a mechanism to account for observed changes in mitogenome structure. Mitochondrial gene rearrangements are usually explained by the recombination model or tandem duplication and random loss model.

**Results:** In this study, the complete mitochondrial genomes of four flatfishes, *Crossorhombus azureus* (blue flounder), *Grammatobothus krempfi*, *Pleuronichthys cornutus*, and *Platichthys stellatus* were determined. A striking finding is that eight genes in the *C. azureus* mitogenome are located in a novel position, differing from that of available vertebrate mitogenomes. Specifically, the *ND6* and seven tRNA genes (the *Q*, *A*, *C*, *Y*, *S*<sub>1</sub>, *E*, *P* genes) encoded by the L-strand have been translocated to a position between *tRNA-T* and *tRNA-F* though the original order of the genes is maintained.

**Conclusions:** These special features are used to suggest a mechanism for *C. azureus* mitogenome rearrangement. First, a dimeric molecule was formed by two monomers linked head-to-tail, then one of the two sets of promoters lost function and the genes controlled by the disabled promoters became pseudogenes, non-coding sequences, and even were lost from the genome. This study provides a new gene-rearrangement model that accounts for the events of gene-rearrangement in a vertebrate mitogenome.

## Background

Mitochondrial DNA (mtDNA) of vertebrate is a circular DNA molecule of 15–20 kb normally containing 13 protein-coding genes, 22 tRNA genes, two rRNA genes, one origin of replication on the light-strand (*O*<sub>L</sub>), and a single control region (CR). The CR is essential for the initiation of transcription and for replication of the heavy strand [1]. Most genes are encoded by the heavy (H-) strand; only the *ND6* gene and eight tRNA genes are encoded by the light (L-) strand. Transcription of L- or H- strand occurs from the light-strand promoter (LSP) or heavy-strand promoter (HSP) [2,3].

Currently, over 1700 complete mitochondrial genome (mitogenome) sequences from vertebrates are available,

and although the gene order of most vertebrate mitogenomes is conserved, mtDNA gene rearrangements have been found in some groups [4-7]. Thus far, three models have been used to explain gene rearrangements in animal mtDNA. First, the recombination model, initially proposed for gene rearrangements in nuclear genomes, is characterized by breakage and rejoining of participating DNA strands [8]. This model has been adopted to account for changes in mitochondrial gene order in frog, bird, muskels, and others [5,9,10]. Another commonly accepted hypothesis is the tandem duplication and random loss (TDRL) model, which posits that rearrangements of mitochondrial gene order have occurred via tandem duplications of some genes followed by random deletion of some of the duplications [11,12]. This model is widely used to explain gene rearrangements in vertebrate mtDNA [4,7,13,14]. Lavrov et al. [15] created a model of tandem duplication and non-random loss (TDNL) to explain the gene rearrangements in two millipede mtDNA genomes

\* Correspondence: xykong@scsio.ac.cn

<sup>1</sup>CAS Key Laboratory of Tropical Marine Bio-resources and Ecology, South China Sea Institute of Oceanology, Chinese Academy of Sciences, 164 West Xingang Road, Guangzhou 510301, PR China

Full list of author information is available at the end of the article

(*Narceus annularus* and *Thyropygus sp.*). According to this model, the mitogenome duplicates to form a dimer genome (two monomer-mitogenomes linked head-to-tail). The duplication is then followed by gene loss determined by transcriptional polarity rather than via random gene loss [15]. Since then, this model has been used to explain the formation of only a few gene rearrangements all in invertebrate mitogenomes [16–18]. To date, no vertebrate mtDNA arrangements have been fit to the Lavrov et al. [15] model.

Here we describe the complete mitogenomes of four flatfishes, *Crossorhombus azureus* (blue flounder), *Grammatobothus krempfi*, *Pleuronichthys cornutus*, and *Platichthys stellatus*, all of which belong to the superfamily Pleuronectoidea. *C. azureus* and *G. krempfi* are members of the Bothidae family, while the other two fishes are in the Pleuronectidae family. The gene order of the *G. krempfi*, *P. cornutus* and *P. stellatus* mitogenomes is the same as that of a typical vertebrate. However, we have discovered a novel gene rearrangement in *C. azureus* mtDNA. From this mitogenome, a new model of gene rearrangement in the *C. azureus* lineage is inferred.

## Methods

### Sampling, DNA extraction, PCR and sequencing

Specimens of *C. azureus* (*C.azu*) were collected from Zhuhai of Guangdong province, *G. krempfi* (*G.kre*) from Xiangshan of Zhejiang province, *P. cornutus* (*P.cor*) and *P. stellatus* (*P.ste*) from Qingdao of Shandong province. A portion of the epaxial musculature was excised from fresh specimen and immediately stored at  $-70^{\circ}\text{C}$ . Total genomic DNA was extracted using the SQ Tissue DNA Kit (OMEGA) following the manufacturer's protocol. Based on alignments and comparisons of complete mitochondrial sequences of flatfishes, dozens of primer pairs were designed for amplification of the mtDNA genomes (Additional file 1: Table S1). More than 30 bp of overlapping fragments between tandem regions were used to ensure correct assembly and integrity of the complete sequence.

PCR was performed in a 25  $\mu\text{l}$  reaction volume containing 2.0 mM  $\text{MgCl}_2$ , 0.4 mM of each dNTP, 0.5  $\mu\text{M}$  of each primer, 1.0 U of Taq polymerase (Takara, China), 2.5  $\mu\text{l}$  of 10 $\times$  Taq buffer, and approximately 50 ng of DNA template. PCR cycling conditions included an initial denaturation at  $95^{\circ}\text{C}$  for 3 min, 30–35 cycles at  $94^{\circ}\text{C}$  for 45 s, an annealing temperature of  $45$ – $55^{\circ}\text{C}$  for 45 s, and elongation at  $68$ – $72^{\circ}\text{C}$  for 1.5–5 min. The PCR reaction was completed by a final extension at  $72^{\circ}\text{C}$  for 5 min. The PCR products were purified with the Takara Agarose Gel DNA Purification Kit (Takara, China) and used directly as templates for cycle sequencing reactions. Sequence-specific primers were further designed and used as walking primers for both strands of each fragment with an ABI 3730 DNA sequencer (Applied Biosystems, USA). The

sequences of the mtDNAs of *C. azureus*, *G. krempfi*, *P. cornutus* and *P. stellatus* have been submitted to GenBank under the accession numbers JQ639068, JQ639069, JQ639071, NC\_010966, respectively.

### Sequence analysis

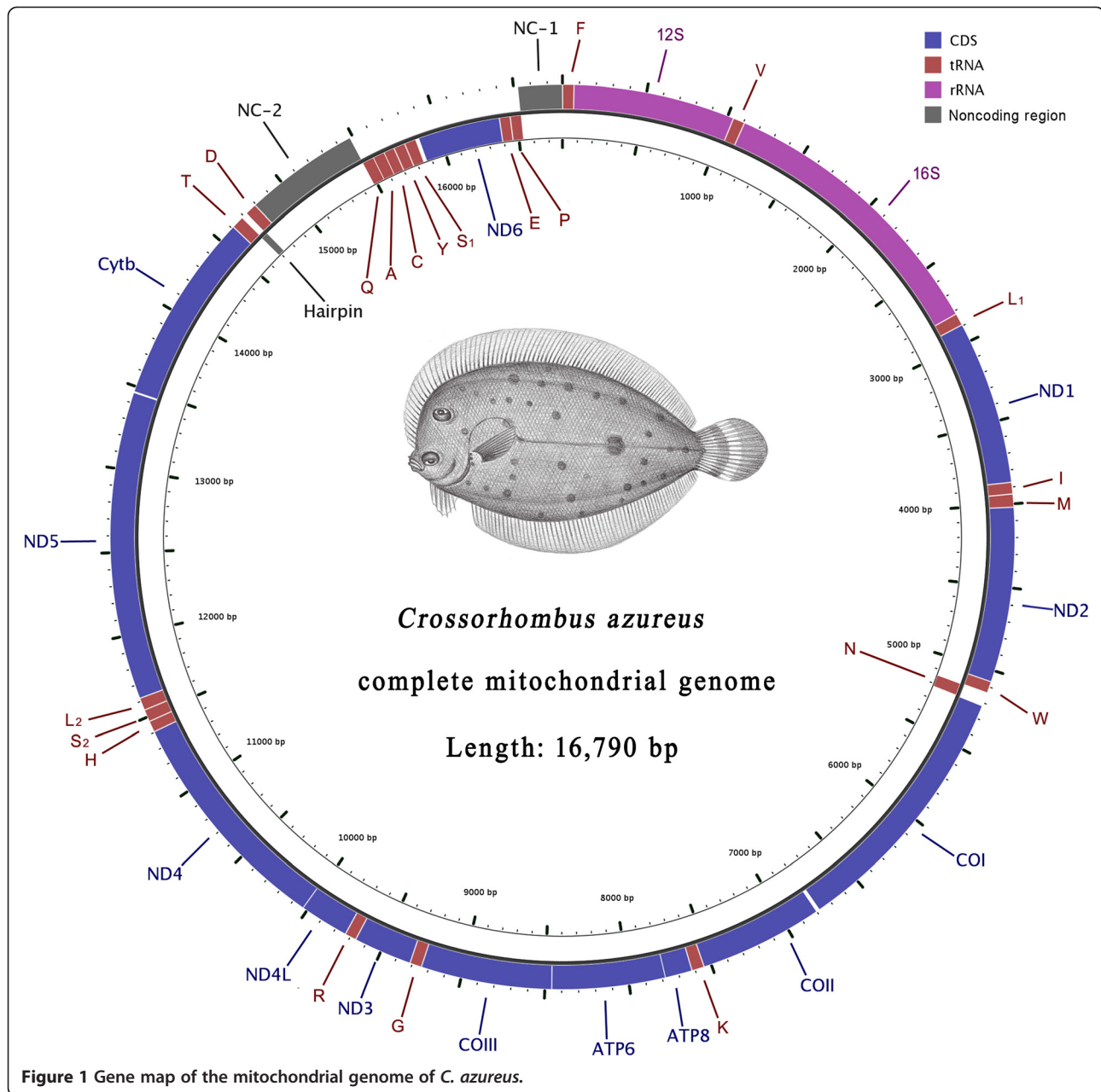
Sequenced fragments were assembled to create complete mitochondrial genomes using CodonCode Aligner v3 and BioEdit v7 [19]. During the processing of large fragments and walking sequences, regular manual examinations were made to ensure reliable assembly of the genome sequence. Annotation and boundary determination of protein-coding and ribosomal RNA genes were performed using NCBI-BLAST (<http://blast.ncbi.nlm.nih.gov/Blast.cgi>). Transfer RNA genes and their secondary structures were identified using tRNAscan-SE 1.21 [20], setting the cut-off values to 1 when necessary. The gene maps of each of the four flatfish mitogenomes were generated using CGView [21]. Mitogenomes of eight other Pleuronectoidea fishes were retrieved from GenBank (Additional file 2: Table S2), including one Scopthalmidae specimen, *Scophthalmus maxima* (*S.max*); one Paralichthyidae fish, *Paralichthys olivaceus* (*P.oli*); and the other six Pleuronectidae fishes: *Kareius bicoloratus*, *Verasper variegatus* (*V.var*), *Verasper moseri* (*V.mos*), *Hippoglossus hippoglossus* (*H.hip*), *Hippoglossus stenolepis* (*H.ste*), and *Reinhardtius hippoglossoides* (*R.hip*).

## Results and discussion

The genomes of *C. azureus*, *G. krempfi*, *P. cornutus*, and *P. stellatus* are all circular molecules of 1,6790 bp, 1,6599 bp, 1,7469 and 1,7103 bp, respectively, and each contains 37 genes, as is typical for vertebrate mtDNAs (Figure 1, Additional file 3: Table S3 and Additional file 4: Figure S4).

### Novel gene order in the *C. azureus* mitogenome

The arrangement of the 37 genes in *G. krempfi*, *P. cornutus* and *P. stellatus* mtDNA is identical to that of a typical vertebrate (Additional file 4: Figure S4). A striking finding in this study is that eight genes of the *C. azureus* mitogenome have a novel position differing from that of any other vertebrate mitogenome. In the blue flounder, the *ND6* and seven tRNA genes (the *Q*, *A*, *C*, *Y*, *S*, *E*, *P* genes) encoded by the L-strand have been translocated to a position between *tRNA-T* and *tRNA-F*. Thus, with one exception, the genes with identical transcriptional polarities are clustered in the genome and separated by two non-coding regions. The exception is the L-strand-encoded *tRNA-N* gene located in a region with genes of the opposite transcriptional polarity (Figure 1). Interestingly, the original order of the rearranged genes, *Q-A-C-Y-S<sub>1</sub>-ND6-E-P*, is maintained (Figure 2). Analysis of 1750 vertebrate mitogenomes available in GenBank (as of Nov. 2012) revealed that

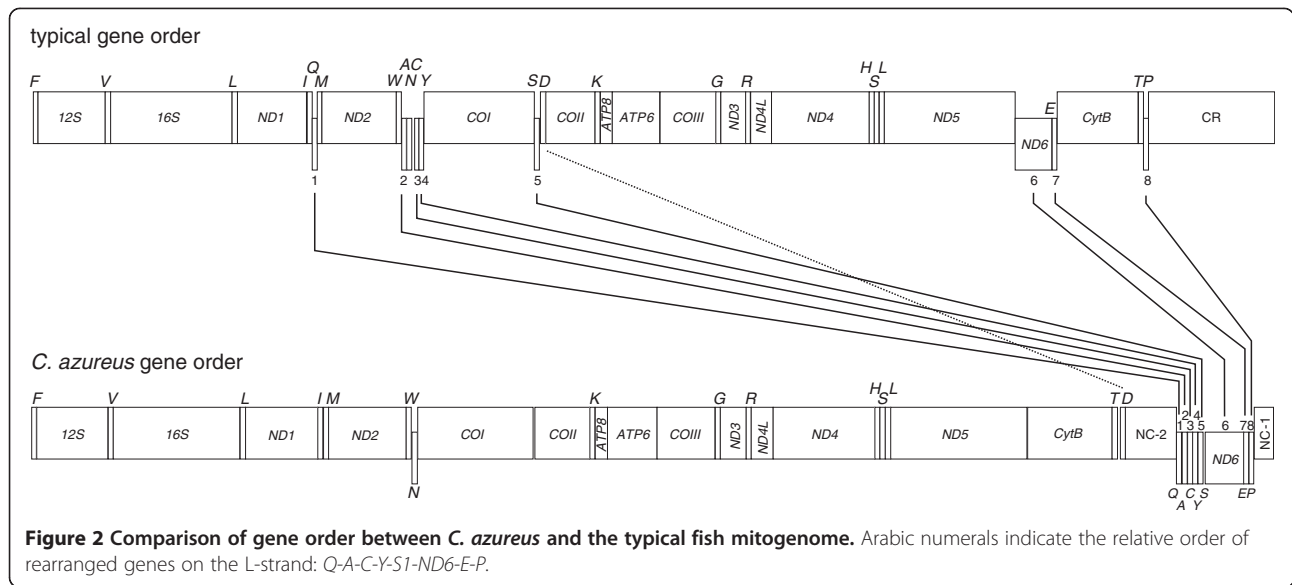


none had a cluster of more than five genes encoded by the L-strand. Thus, the arrangement of genes in the blue flounder mitogenome appears to be unique in vertebrates. One additional translocation is noted: *tRNA-D* (encoded by H-strand) is translocated from its typical location between *COI* and *COII* to a position following *CytB* (Figure 2).

#### CR variation in the *C. azureus* mitogenome

The CRs of *G. krempfi*, *P. cornutus*, and *P. stellatus* are located between *tRNA-P* and *tRNA-F*, as is typical, with lengths of 891 bp, 1,778 bp and 1,400 bp, respectively. Comparison of these CR sequences with those of seven

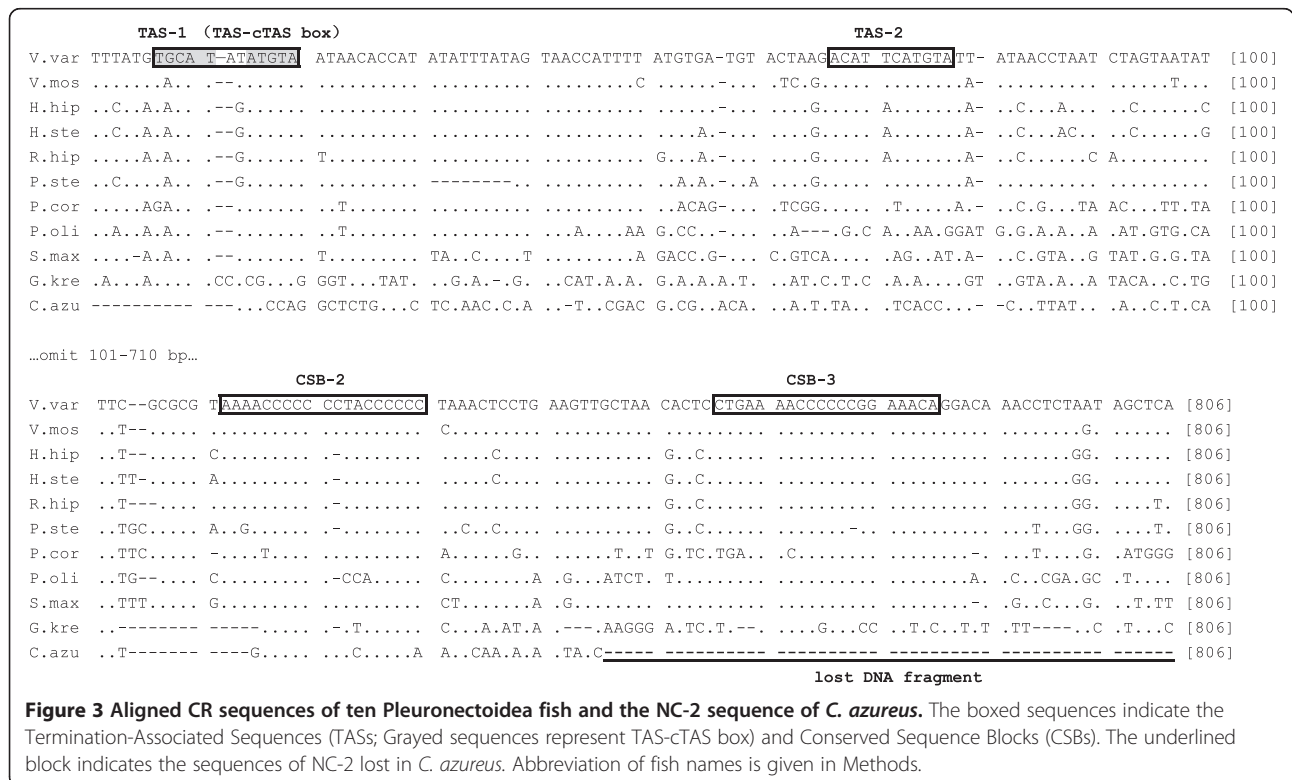
other flatfishes reveals that the CR structure is typical for teleosts [22-25], including Termination-Associated Sequences (TAS-1, 2) and Conserved Sequence Blocks (CSB-2, 3). TAS-1 includes a typical TAS-complementary TAS block sequence (TAS-cTAS: TACAT-ATGTA) (Figure 3, Additional file 5: Figure S5). However, only a 263 bp non-coding fragment (NC-1) remains in the original CR location in the *C. azureus* mitogenome (Figure 1), and none of the TAS, CSB, or any other conserved sequences was observed. Another non-coding region of 687 bp (NC-2) was found between the *tRNA-D* and *tRNA-Q* genes, including possible TAS-1 and CSB-2 (Figures 1, 3, and Additional file 5: Figure S5). Accordingly, we consider



NC-2 to be a part of the CR. However, CSB-3 and typical downstream sequences observed in other flatfish were not found (Figure 3, Additional file 5: Figure S5). Generally, the LSP and HSP are situated between the CSB and *tRNA-F* [1,3]. The lack of downstream sequences implies the loss of LSP and HSP in this partial CR.

### Location and sequence variations of O<sub>L</sub> region in the *C. azureus* mitogenome

The O<sub>L</sub> sequences in *G. krempfi*, *P. cornutus*, and *P. stellatus* were found between *tRNA-N* and *tRNA-C* in the *tRNA* gene cluster known as the WANCY region (the *tRNA* cluster of *tRNA-Trp*, *Ala*, *Asn*, *Cys* and *Tyr*) as is



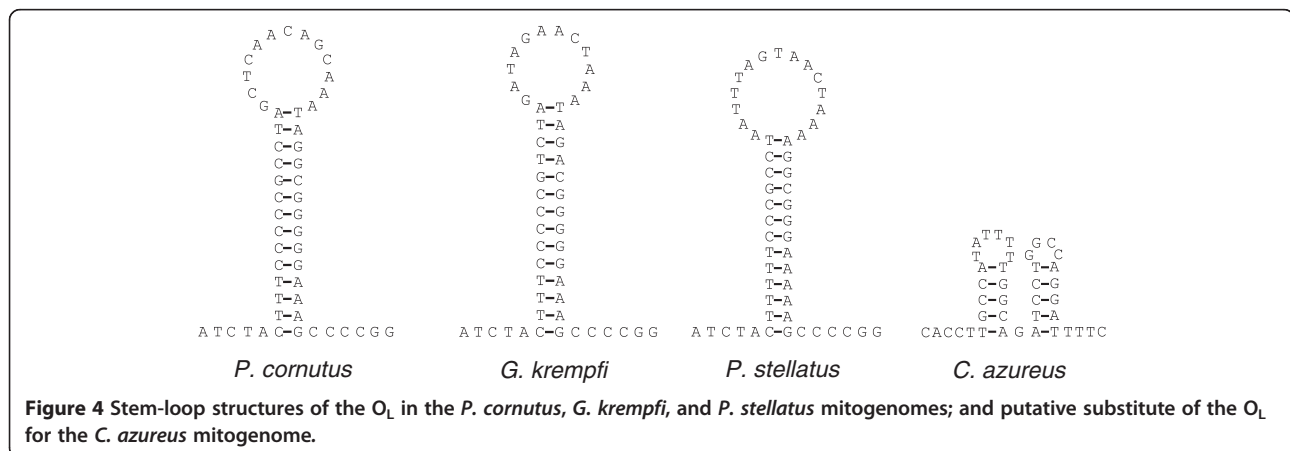
typical for vertebrates [26-29]. These  $O_L$  sequences have the potential to fold into stable stem-loop structures with 13- or 14- bp stems and 13-, 14-, and 15-base loops (Figure 4). However, due to translocation of the *tRNA-A*, *C*, and *Y* genes in the *C. azureus* mitogenome, the WANCY region of this mitogenome contains only an 8-bp intergenic spacer between *tRNA-N* and *COI* genes, and is thus unable to form the stem-loop structure of the  $O_L$ .  $O_L$  sequence loss has also been seen in some vertebrate mitogenomes, where it has been suggested that a sequence encoding a tRNA adopts a hairpin structure and acts as the  $O_L$  [30-32].

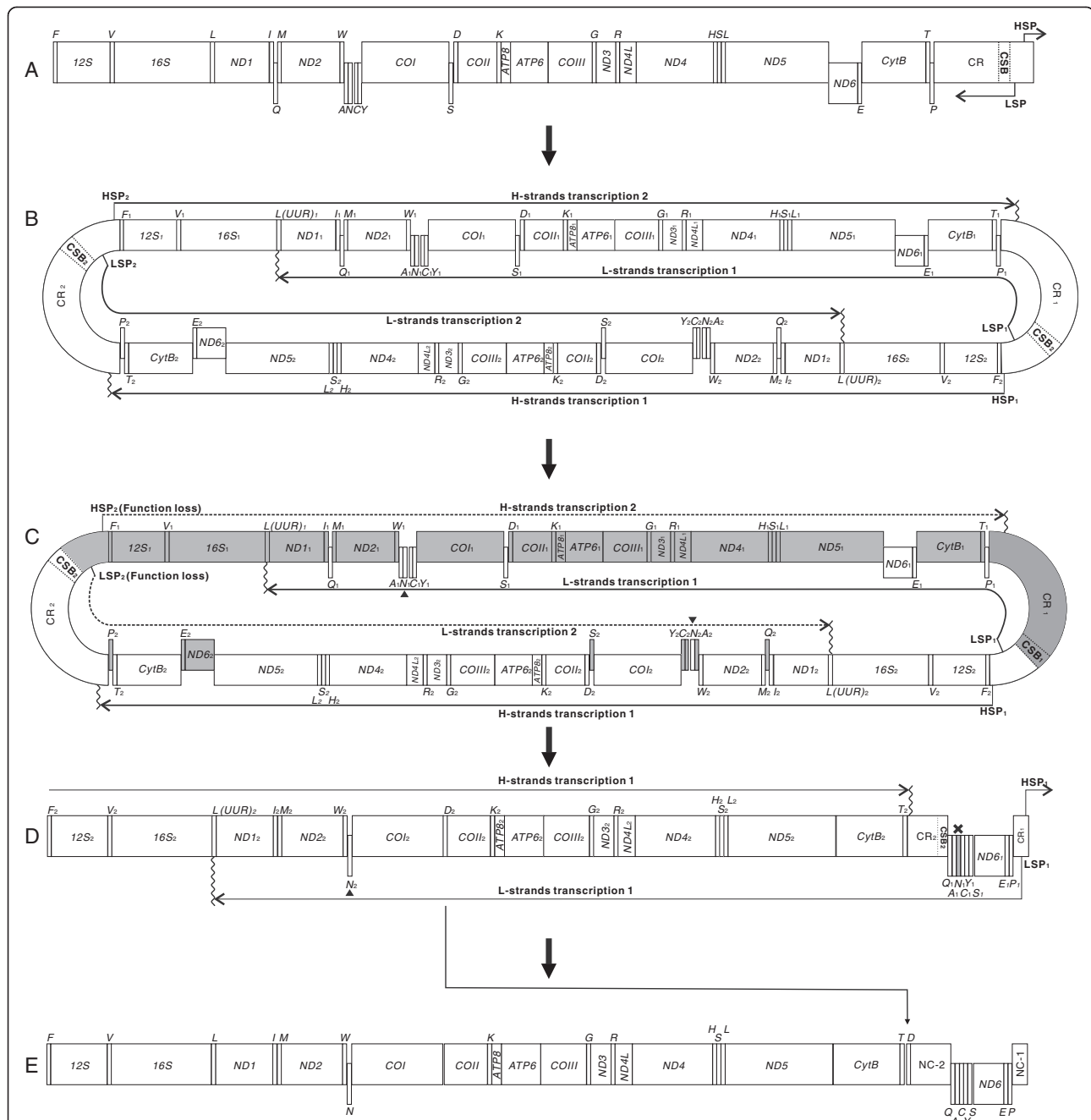
### Gene rearrangement mechanism for the *C. azureus* mitogenome

Generally in vertebrate mitogenomes, small-scale gene rearrangements are rare and genomic-scale changes occur even less frequently [7], especially in teleostean fishes [28,33-35]. It is difficult, therefore, to propose a mechanism to account for the observed changes in genome structure. Gene rearrangement events are usually explained by the recombination or TDRL models [7]. The genes of the *C. azureus* mitogenome are extensively rearranged with clustering of eight of nine genes on the L-strand in the same polarity in an unchanged relative order. These special features provide a foundation on which to suggest a mechanism for gene-rearrangement in the *C. azureus* mitogenome. Though the gene rearrangement seen in *C. azureus* can be explained by recombination, TDRL or other models, using these models to explain observed *C. azureus* rearrangements is not as parsimonious as the model proposed below. For instance, to apply the recombination model to the *C. azureus* mitogenome, more than four recombination events would be required and each recombination event would need to translocate certain L-strand coding genes to the specific position at L-strand coding gene cluster.

Since it is known that among the teleost fishes even single gene rearrangements caused by recombination are rare, this model seems an unlikely fit to the data. Similarly, using the tRNA mis-priming model [36] would require five or more specific tRNA mis-priming events. Lastly, apply tandem duplication “random loss” (TDRL) to the *C. azureus* mitogenome, the “loss” events, from the duplicated genome to the *C. azureus* type, shared very peculiar characteristic: only the L-strand coding gene including *ND6* and tRNA of *P*, *E*, *S*, *Y*, *C*, *A* and *Q* was translocated and grouped together. Instead, the rearrangement of the *C. azureus* genome including two groups of genes with different transcriptional polarities is better explained by the following model.

Because the gene order of 11 of 12 flatfish mitogenomes discussed in this paper (Additional file 2: Table S2) is the same as the typical arrangement, including one member of the Bothidae family, *G. krempfi*, we hypothesize that the ancestral mitochondrial gene arrangement in *C. azureus* (in the family Bothidae) was that of a typical vertebrate (Figure 5A). We further hypothesize that the processes leading to the observed blue flounder gene arrangement are as follows. The first step would have been a duplication of the entire mitogenome, resulting in a dimeric molecule with the two monomers linked head-to-tail (Figure 5B). The genes and CRs of the dimeric mtDNA are assumed to have retained their functions at this time, so that transcription could be initiated normally at the promoters (LSP<sub>1</sub> and HSP<sub>2</sub>, LSP<sub>2</sub> and HSP<sub>1</sub>) and transcription would be terminated at *tRNA-L* (*UUUR*) for the L-strand and at part of the CR close to *tRNA-T* for the H-strand [37-39] (Figure 5B). Subsequently, the functionality of the promoters in one of the control regions (assumed to be LSP<sub>2</sub> and HSP<sub>2</sub>) was lost or severely impaired due to mutation or fragment loss, thus the genes controlled by the disabled promoters (LSP<sub>2</sub> and HSP<sub>2</sub>) would become pseudogenes (grayed regions, Figure 5C). These pseudogenes could then accumulate additional





**Figure 5** Inferred intermediate steps from the ancestral gene order to that of the *C. azureus* mitogenome. Protein-coding genes and CRs are indicated by boxes, and the tRNA genes are indicated by columns. Genes labeled above the diagram are encoded by the H-strand, those below the diagram by the L-strand. The LSP and HSP indicate the light-strand and heavy-strand promoters, respectively; CSB indicates Conserved Sequence Block. The direction of transcription is shown by arrows. The copied tRNA-N are marked by triangles. (A) ancestral gene order; (B) The dimeric molecule with two monomers linked head-to-tail; The locations of LSP<sub>1,2</sub> and tRNA-L(UUR)<sub>1,2</sub> 5' end of CR indicate the proposed positions for transcription initiation and termination of the two monomers. (C) Functional loss of LSP<sub>2</sub>, HSP<sub>2</sub>; broken line indicates the disabled transcription regions; Dark gray box indicates the degeneration of LSP<sub>2</sub>, HSP<sub>2</sub> and related genes. (D) Proposed translocation of tRNA-D is shown by arrow. (E) Gene order of the *C. azureus* mitogenome.

mutations to become shorter non-coding sequences or even be lost from the genome (Figure 5D). Consequently, the genes transcribed from LSP<sub>1</sub> to tRNA-L(UUR)<sub>1</sub> (gene block1: P<sub>1</sub>, E<sub>1</sub>, ND6<sub>1</sub>, S<sub>1</sub>, Y<sub>1</sub>, C<sub>1</sub>, N<sub>1</sub>, A<sub>1</sub> and

Q<sub>1</sub>) would be clustered together, and the other genes transcribed from HSP<sub>1</sub> to part of the CR (gene block 2: F<sub>2</sub>, 12S<sub>2</sub>, V<sub>2</sub>,.....ND5<sub>2</sub> CytB<sub>2</sub>, T<sub>2</sub>) would also be clustered, with the exception of the retention of tRNA-N<sub>2</sub>

gene which clusters with genes of the opposite transcriptional polarity (Figure 5C,D).

The *tRNA-N* gene is located in WANCY region adjoining  $O_L$  and Seligmann and Krishnan [32] speculated that it not only was transcribed into *tRNA-N*, but also could form  $O_L$ -like structures that may have functioned during mitochondrial replication of the L-strand. Therefore, although the *tRNA-N<sub>2</sub>* should not be transcribed in the process shown in Figure 5C, it was still preserved because it functioned as  $O_L$  or assisted in  $O_L$  functioning during L-strand replication. In the following processes, due to degradation of *tRNA-L(UUR)<sub>1</sub>* (the termination of L-strands transcription 1), transcription would be terminated at *tRNA-L(UUR)<sub>2</sub>* instead of at *L(UUR)<sub>1</sub>*. Hence, the gene *tRNA-N<sub>2</sub>* could be re-transcribed (Figure 5D). Finally, the *tRNA-N<sub>2</sub>* gene was preserved while *N<sub>1</sub>* was lost. Lastly, the gene *tRNA-D* was translocated from between *COI* and *COII* genes to a site between *tRNA-T* and CR. This event can be explained by tRNA mis-priming model or recombination event. Such translocations had been found in vertebrate and are relatively common in metazoan mitochondrial genome rearrangements [4,10,40]. Translocation of *tRNA-D* could have occurred either before or after the duplication and loss events postulated above. After the above rearrangements, a hybrid monomer-mitogenome (gene block1 and block2) would have been formed, in which genes with identical transcriptional polarity were placed into two clusters separated by two noncoding regions (Figure 5E).

#### Details and support for the model

The inferred “dimer-mitogenome” intermediate of the *C. azureus* mtDNA (Figure 5B) could be formed by two entire mitogenomes or from two longer mtDNA fragments that include all L-coding genes (namely from *tRNA-Q* to CR, Figure 5A). While the duplication of a very large fragment is unusual in vertebrate mitogenomes, the dimeric mitogenome molecule has been observed in many animals [17,41,42] including almost all mammals [43]. Therefore, a duplication of the complete genome is more likely than the duplication of a very large fragment.

The inferred intermediate rearrangement for the *C. azureus* mitogenome is similar to that of the TDNL [15]. The crucial step in both models is that one set of light and heavy strand promoters lost function. The two non-coding regions (NC-1, NC-2) present in the *C. azureus* mitogenome provide evidence for this intermediate step. When comparing the CR structure with those of other fishes, we found that the 687 bp NC-2 region includes possible TAS-1 and CSB-2 sequences, but not the LSP or HSP (after CSB; Figure 3). This feature provides evidence that one set of transcriptional promoters in the CR lost function (Figure 5C). To date, no conserved sequences of the LSP and the HSP have been found in

teleostean fishes. However, the logical position of the promoters in the *C. azureus* mitogenome would be in NC-1 for the following reasons. First, most researches [1,37,38] agrees that the HSP and LSP must be located very close to *tRNA-F* and the 5' end of the 12S rRNA gene. NC-1 is the closest region to those genes. Second, NC-1 is located where the two gene clusters are separated by their transcription polarities, allowing transcription to originate in both directions (Figure 5D). According to previous studies, the LSP and HSP must be located in a non-coding region not far from 3' end of CSB (close to the origin of replication for the H-strand:  $O_H$ ) because the RNA primer from LSP to  $O_H$  is necessary for mitochondrial replication [1,44]. Again, NC-1 is the closest, sufficiently long non-coding region located downstream of CSB (Figure 1, Additional file 3: Table S3a). In summary, the features of NC-1 support the interpretation that “the other CR retains the promoters” in our model.

#### Conclusions

In summary, we determined the complete mitochondrial genomes of four flatfishes, *Crossorhombus azureus* (blue flounder), *Grammatobothus krempfi*, *Pleuronichthys cornutus*, and *Platichthys stellatus*. The genes of the *C. azureus* mitogenome are extensively rearranged with eight of nine genes on the L-strand in the same polarity and their relative order unchanged. A mechanism similar to the TDNL model is proposed to explain the origin of these special features. The model also explains the gene-rearrangements in which genes are clustered in the same polarity (L- or H-strand coding) with their relative order unchanged.

#### Data accession

Sequences were deposited in the NCBI [JQ639068, JQ639069, JQ639071, NC\_010966].

#### Additional files

**Additional file 1: Table S1.** The primers used for fragment amplification in four flatfish mitogenomes.

**Additional file 2: Table S2.** Information of flatfishes used in this study.

**Additional file 3: Table S3.** Organization of four flatfishes mitochondrial genomes.

**Additional file 4: Figure S4.** Gene maps of the mitochondrial genome of *G. krempfi*, *P. cornutus* and *P. stellatus*.

**Additional file 5: Figure S5.** Complete CR DNA fragments alignment of 11 Pleuonectoidea fishes.

#### Competing interests

The authors declare that they have no competing interests.

#### Authors' contributions

WS collected datasets, carried out experiments, and drafted the manuscript. XYK directed the whole research work and revised the manuscript. XLD, XGM, and SYW carried out partial experiments. All authors read and approved the final manuscript.

## Acknowledgements

This work was supported by the Natural Science Foundation of China (30870283, 31071890 and 41206134). We thank Prof. Elizabeth A. De Stasio for English editorial assistance and Dr. Xiangyun Wu for his suggestions and comments.

## Author details

<sup>1</sup>CAS Key Laboratory of Tropical Marine Bio-resources and Ecology, South China Sea Institute of Oceanology, Chinese Academy of Sciences, 164 West Xingang Road, Guangzhou 510301, PR China. <sup>2</sup>Heilongjiang River Fisheries Research Institute, Chinese Academy of Fishery Science, 232 Hesong Street, Harbin 150070, PR China. <sup>3</sup>Key Laboratory of Sustainable Utilization of Technology Research for Fishery Resource of Zhejiang Province, Marine Fisheries Research Institute of Zhejiang, Zhoushan 316100, China.

Received: 13 May 2013 Accepted: 12 August 2013

Published: 20 August 2013

## References

1. Clayton DA: Replication and transcription of vertebrate mitochondrial DNA. *Annu Rev Cell Biol* 1991, **7**:453–478.
2. Shadel GS, Clayton DA: Mitochondrial DNA maintenance in vertebrates. *Annu Rev Biochem* 1997, **66**:409–435.
3. Clayton DA: Transcription and replication of mitochondrial DNA. *Hum Reprod* 2000, **15**(Suppl 2):11–17.
4. Amer SA, Kumazawa Y: The mitochondrial genome of the lizard *Calotes versicolor* and a novel gene inversion in South Asian draconine agamids. *Mol Biol Evol* 2007, **24**(6):1330–1339.
5. Sammler S, Bleidorn C, Tiedemann R: Full mitochondrial genome sequences of two endemic Philippine hornbill species (Aves: Bucerotidae) provide evidence for pervasive mitochondrial DNA recombination. *BMC Genomics* 2011, **12**:35.
6. Zhou Y, Zhang JY, Zheng RQ, Yu BG, Yang G: Complete nucleotide sequence and gene organization of the mitochondrial genome of *Paa spinosa* (Anura: Ranoidae). *Gene* 2009, **447**(2):86–96.
7. San Mauro D, Gower DJ, Zardoya R, Wilkinson M: A hotspot of gene order rearrangement by tandem duplication and random loss in the vertebrate mitochondrial genome. *Mol Biol Evol* 2006, **23**(1):227–234.
8. Lunt DH, Hyman BC: Animal mitochondrial DNA recombination. *Nature* 1997, **387**(6630):247.
9. Ladoukakis ED, Zouros E: Recombination in animal mitochondrial DNA: evidence from published sequences. *Mol Biol Evol* 2001, **18**(11):2127–2131.
10. Kurabayashi A, Sumida M, Yonekawa H, Glaw F, Vences M, Hasegawa M: Phylogeny, recombination, and mechanisms of stepwise mitochondrial genome reorganization in mantellid frogs from Madagascar. *Mol Biol Evol* 2008, **25**(5):874–891.
11. Arndt A, Smith MJ: Mitochondrial gene rearrangement in the sea cucumber genus *Cucumaria*. *Mol Biol Evol* 1998, **15**(8):1009–1016.
12. Moritz C, Dowling TE, Brown WM: Evolution of animal mitochondrial-DNA - relevance for population biology and systematics. *Annu Rev Ecol Syst* 1987, **18**:269–292.
13. Inoue JG, Miya M, Tsukamoto K, Nishida M: Evolution of the deep-sea gulper eel mitochondrial genomes: large-scale gene rearrangements originated within the eels. *Mol Biol Evol* 2003, **20**(11):1917–1924.
14. Schirtzinger EE, Tavares ES, Gonzales LA, Eberhard JR, Miyaki CY, Sanchez JJ, Hernandez A, Mueller H, Graves GR, Fleischer RC, et al: Multiple independent origins of mitochondrial control region duplications in the order Psittaciformes. *Mol Phylogenet Evol* 2012, **64**(2):342–356.
15. Lavrov DV, Boore JL, Brown WM: Complete mtDNA sequences of two millipedes suggest a new model for mitochondrial gene rearrangements: duplication and nonrandom loss. *Mol Biol Evol* 2002, **19**(2):163–169.
16. Gai Y, Song D, Sun H, Yang Q, Zhou K: The complete mitochondrial genome of *Symphylella* sp. (Myriapoda: Symphyla): extensive gene order rearrangement and evidence in favor of Progoneata. *Mol Phylogenet Evol* 2008, **49**(2):574–585.
17. Beckenbach AT: Mitochondrial genome sequences of Nematocera (lower Diptera): evidence of rearrangement following a complete genome duplication in a winter crane fly. *Genome Biol Evol* 2012, **4**(2):89–101.
18. Podsiadlowski L, Kohlhaagen H, Koch M: The complete mitochondrial genome of *Scutigera caudata* (Myriapoda: Symphyla) and the phylogenetic position of Symphyla. *Mol Phylogenet Evol* 2007, **45**(1):251–260.
19. Hall TA: BioEdit: a user-friendly biological sequence alignment editor and analysis program for Windows 95/98/NT. *Nucleic Acids Symp Ser* 1999, **41**:95–98.
20. Lowe TM, Eddy SR: tRNAscan-SE: a program for improved detection of transfer RNA genes in genomic sequence. *Nucleic Acids Res* 1997, **25**(5):955–964.
21. Stothard P, Wishart DS: Circular genome visualization and exploration using CGView. *Bioinformatics* 2005, **21**(4):537–539.
22. Guo X, Liu S, Liu Y: Comparative analysis of the mitochondrial DNA control region in cyprinids with different ploidy level. *Aquaculture* 2003, **224**(1–4):25–38.
23. Ravago RG, Monje VD, Juinio-Menez MA: Length and sequence variability in mitochondrial control region of the milkfish, *Chanos chanos*. *Mar Biotechnol (NY)* 2002, **4**(1):40–50.
24. Mjelle KA, Karlsen BO, Jorgensen TE, Moum T, Johansen SD: Halibut mitochondrial genomes contain extensive heteroplasmic tandem repeat arrays involved in DNA recombination. *BMC Genomics* 2008, **9**:10.
25. Manchado M, Catanese G, Ponce M, Funes V, Infante C: The complete mitochondrial genome of the Senegal sole. *Solea senegalensis* Kaup. Comparative analysis of tandem repeats in the control region among soles. *DNA Seq* 2007, **18**(3):169–175.
26. Shi W, Kong XY, Wang ZM, Jiang JX: Utility of tRNA genes from the complete mitochondrial genome of *Psetta maxima* for implying a possible sister-group relationship to the Pleuronectiformes. *Zool Stud* 2011, **50**(5):665–681.
27. Zhang XY, Yue BS, Jiang WX, Song ZB: The complete mitochondrial genome of rock carp *Procypris rabaudi* (Cypriniformes: Cyprinidae) and phylogenetic implications. *Mol Biol Rep* 2009, **36**(5):981–991.
28. Ponce M, Infante C, Jimenez-Cantizano RM, Perez L, Manchado M: Complete mitochondrial genome of the blackspot seabream, *Pagellus bogaraveo* (Perciformes: Sparidae), with high levels of length heteroplasmy in the WANCY region. *Gene* 2008, **409**(1–2):44–52.
29. He C, Han J, Ge L, Zhou Z, Gao X, Mu Y, Liu W, Cao J, Liu Z: Sequence and organization of the complete mitochondrial genomes of spotted halibut (*Verasper variegatus*) and barfin flounder (*Verasper moseri*). *DNA Seq* 2008, **19**(3):246–255.
30. Desjardins P, Morais R: Sequence and gene organization of the chicken mitochondrial genome. A novel gene order in higher vertebrates. *J Mol Biol* 1990, **212**(4):599–634.
31. Seligmann H, Krishnan NM, Rao BJ: Possible multiple origins of replication in primate mitochondria: alternative role of tRNA sequences. *J Theor Biol* 2006, **241**(2):321–332.
32. Seligmann H, Krishnan NM: Mitochondrial replication origin stability and propensity of adjacent tRNA genes to form putative replication origins increase developmental stability in lizards. *J Exp Zool B Mol Dev Evol* 2006, **306**(5):433–449.
33. Mabuchi K, Miya M, Satoh TP, Westneat MW, Nishida M: Gene rearrangements and evolution of tRNA pseudogenes in the mitochondrial genome of the parrotfish (Teleostei: Perciformes: Scaridae). *J Mol Evol* 2004, **59**(3):287–297.
34. Ki JS, Jung SO, Hwang DS, Lee YM, Lee JS: Unusual mitochondrial genome structure of the freshwater goby *Odontobutis platycephala*: rearrangement of tRNAs and an additional non-coding region. *J Fish Biol* 2008, **73**(2):414–428.
35. Kong X, Dong X, Zhang Y, Shi W, Wang Z, Yu Z: A novel rearrangement in the mitochondrial genome of tongue sole, *Cynoglossus semilaevis*: control region translocation and a tRNA gene inversion. *Genome* 2009, **52**(12):975–984.
36. Cantatore P, Gadaleta MN, Roberti M, Saccone C, Wilson AC: Duplication and remoulding of tRNA genes during the evolutionary rearrangement of mitochondrial genomes. *Nature* 1987, **329**(6142):853–855.
37. Guja KE, Garcia-Diaz M: Hitting the brakes: termination of mitochondrial transcription. *Biochim Biophys Acta* 2012, **1819**(9–10):939–947.
38. Fernandez-Silva P, Enriquez JA, Montoya J: Replication and transcription of mammalian mitochondrial DNA. *Exp Physiol* 2003, **88**(1):41–56.
39. Yakubovskaya E, Mejia E, Byrnes J, Hambardjieva E, Garcia-Diaz M: Helix unwinding and base flipping enable human MTERF1 to terminate mitochondrial transcription. *Cell* 2010, **141**(6):982–993.
40. Mueller RL, Boore JL: Molecular mechanisms of extensive mitochondrial gene rearrangement in plethodontid salamanders. *Mol Biol Evol* 2005, **22**(10):2104–2112.



41. Shah DM, Langley CH: Complex mitochondrial DNA in *Drosophila*. *Nucleic Acids Res* 1977, **4**(9):2949–2960.
42. Raimond R, Marcade I, Bouchon D, Rigaud T, Bossy JP, Souty-Grosset C: Organization of the large mitochondrial genome in the isopod *Armadillidium vulgare*. *Genetics* 1999, **151**(1):203–210.
43. Clayton DA, Smith CA, Jordan JM, Teplitz M, Vinograd J: Occurrence of complex mitochondrial DNA in normal tissues. *Nature* 1968, **220**(5171):976–979.
44. Chang DD, Clayton DA: Precise assignment of the light-strand promoter of mouse mitochondrial-DNA - a functional promoter consists of multiple upstream domains. *Mol Cell Biol* 1986, **6**(9):3253–3261.

doi:10.1186/1471-2148-13-173

**Cite this article as:** Shi et al.: Complete mitogenome sequences of four flatfishes (Pleuronectiformes) reveal a novel gene arrangement of L-strand coding genes. *BMC Evolutionary Biology* 2013 **13**:173.

**Submit your next manuscript to BioMed Central and take full advantage of:**

- Convenient online submission
- Thorough peer review
- No space constraints or color figure charges
- Immediate publication on acceptance
- Inclusion in PubMed, CAS, Scopus and Google Scholar
- Research which is freely available for redistribution

Submit your manuscript at  
[www.biomedcentral.com/submit](http://www.biomedcentral.com/submit)

