

ARTICLE

Open Access

# Disruption of estradiol regulation of orexin neurons: a novel mechanism in excessive ventilatory response to CO<sub>2</sub> inhalation in a female rat model of panic disorder

Luana Tenorio-Lopes<sup>1</sup>, Stéphanie Fournier<sup>2</sup>, Mathilde S. Henry<sup>3</sup>, Frédéric Bretzner<sup>4</sup> and Richard Kinkead<sup>1</sup>

## Abstract

Panic disorder (PD) is ~2 times more frequent in women. An excessive ventilatory response to CO<sub>2</sub> inhalation is more likely during the premenstrual phase. While ovarian hormones appear important in the pathophysiology of PD, their role remains poorly understood as female animals are rarely used in pre-clinical studies. Using neonatal maternal separation (NMS) to induce a “PD-like” respiratory phenotype, we tested the hypothesis that NMS disrupts hormonal regulation of the ventilatory response to CO<sub>2</sub> in female rats. We then determined whether NMS attenuates the inhibitory actions of 17-β estradiol (E<sub>2</sub>) on orexin neurons (ORX). Pups were exposed to NMS (3 h/day; postnatal day 3–12). The ventilatory response to CO<sub>2</sub>-inhalation was tested before puberty, across the estrus cycle, and following ovariectomy. Plasma E<sub>2</sub> and hypothalamic ORX<sub>A</sub> were measured. The effect of an ORX<sub>1</sub> antagonist (SB334867; 15 mg/kg) on the CO<sub>2</sub> response was tested. Excitatory postsynaptic currents (EPSCs) were recorded from ORX neurons using whole-cell patch-clamp. NMS-related increase in the CO<sub>2</sub> response was observed only when ovaries were functional; the largest ventilation was observed during proestrus. SB334867 blocked this effect. NMS augmented levels of ORX<sub>A</sub> in hypothalamus extracts. EPSC frequency varied according to basal plasma E<sub>2</sub> levels across the estrus cycle in controls but not NMS. NMS reproduces developmental and cyclic changes of respiratory manifestations of PD. NMS disrupts the inhibitory actions of E<sub>2</sub> on the respiratory network. Impaired E<sub>2</sub>-related inhibition of ORX neurons during proestrus is a novel mechanism in respiratory manifestations of PD in females.

## Introduction

Many panic disorder (PD) patients experience respiratory symptoms, including hyperventilation, sleep apnea, chest pain, and dyspnea<sup>1–3</sup>. According to Klein’s “*False suffocation alarm hypothesis*”, excessive sensitivity to respiratory stimuli is at the core of PD<sup>4</sup>. CO<sub>2</sub> inhalation can trigger intense fear, autonomic, and ventilatory

responses<sup>5</sup> and the probability of experiencing the panicogenic effects of CO<sub>2</sub> is greater in PD patients than healthy subjects<sup>6,7</sup>. Located in a hypothalamic region initially known as the “panic area”, orexin-producing neurons (ORX) regulate arousal and the intensity of respiratory reflexes<sup>8–10</sup>. ORX concentration in the cerebrospinal fluid of PD patients is higher than in healthy subjects<sup>11</sup> and activation of ORX neurons and ORX-1 receptors are both necessary to observe a panic-prone state in rats and in humans<sup>11–13</sup>.

Early life adversities are an important risk factor for PD; clinical and pre-clinical data show that unstable parental conditions or experimental disruption of maternal care augment respiratory and behavioral responses to CO<sub>2</sub><sup>14–16</sup>.

Correspondence: Richard Kinkead ([Richard.Kinkead@fmed.ulaval.ca](mailto:Richard.Kinkead@fmed.ulaval.ca))

<sup>1</sup>Hotchkiss Brain Institute; Department of Physiology and Pharmacology, University of Calgary, Calgary, AB, Canada

<sup>2</sup>Centre de Recherche de l’Institut Universitaire de Cardiologie et de Pneumologie de Québec. Département de Pédiatrie. Université Laval, Québec, QC, Canada

Full list of author information is available at the end of the article

These authors contributed equally: Luana Tenorio-Lopes, Stéphanie Fournier

© The Author(s) 2020



**Open Access** This article is licensed under a Creative Commons Attribution 4.0 International License, which permits use, sharing, adaptation, distribution and reproduction in any medium or format, as long as you give appropriate credit to the original author(s) and the source, provide a link to the Creative Commons license, and indicate if changes were made. The images or other third party material in this article are included in the article’s Creative Commons license, unless indicated otherwise in a credit line to the material. If material is not included in the article’s Creative Commons license and your intended use is not permitted by statutory regulation or exceeds the permitted use, you will need to obtain permission directly from the copyright holder. To view a copy of this license, visit <http://creativecommons.org/licenses/by/4.0/>.

Much like chronic stress, neonatal maternal separation (NMS) augments ORX function<sup>17–19</sup>. Together, these data strongly argue that NMS-related dysregulation of ORX function is an important mechanism in excessive ventilatory response to CO<sub>2</sub> inhalation in PD patients. The mechanisms responsible for abnormal ORX-modulation of the ventilatory control system are not fully understood, but to make significant progress that will ultimately influence clinical practice, pre-clinical research requires animal models that are close to the clinical reality<sup>20,21</sup>.

The prevalence of PD is 2–3 fold greater in women than in men, yet most of our basic knowledge arises from experiments performed on males despite strong evidence indicating that endocrine regulation of ORX neurons is sex-specific<sup>22,23</sup>. This is an important issue because clinical observations point to an important role of ovarian hormones in the pathophysiology of PD. The incidence of PD rises at puberty and in adult women, the responsiveness to CO<sub>2</sub> inhalation is highest during the premenstrual phase. Together, these observations suggest that PD patients are more sensitive to hormonal fluctuation than healthy subjects<sup>24–26</sup>. To address this issue, we first tested the hypothesis that early life adversities (in the form of NMS) disrupts hormonal regulation of the ventilatory response to CO<sub>2</sub>. Specifically, we determined whether NMS-related increase in the responsiveness to CO<sub>2</sub> inhalation evolves with reproductive status of females. Non-invasive respiratory measurements were performed prior to puberty, across each phase of the estrus cycle, and following ovariectomy. We then used a pharmacological approach to determine whether activation of ORX<sub>1</sub>-receptors is necessary to NMS-induced enhancement of the CO<sub>2</sub> response. The evidence indicating that 17 $\beta$ -estradiol (E<sub>2</sub>) inhibits ORX neurons being indirect<sup>27,28</sup>, we then used whole-cell patch-clamp recordings to assess E<sub>2</sub>'s effects on green fluorescent protein (GFP)-labeled ORX neurons in females. Finally, we tested the hypothesis that NMS disrupts E<sub>2</sub>'s inhibitory actions on the ORX system and its influence on CO<sub>2</sub>-induced respiratory manifestation of PD in females.

## Methods

### Animals and ethical approval

Experiments were performed on sexually mature female Sprague–Dawley rats and pre-pubertal rat pups (14–15 days old) of both sexes. Rats were preferred to mice because, unlike mice, enhancement of the CO<sub>2</sub> response due to early life adversities is sex-specific in this species<sup>15,29</sup>. Details about age, body weight, and animal distribution amongst the experimental groups are reported in Supplemental Table 1 and in the figures. All animals were born and raised in our animal care facilities. Rats were supplied with food and water *ad libitum* and maintained in standard conditions (21 °C, 12:12-h

dark–light cycle: lights on at 06:00 and off at 18:00). Animal Care Committee of Université Laval approved all the experimental procedures and protocols, which were in accordance with the guidelines of the Canadian Council on Animal Care.

### Neonatal maternal separation (NMS)

The NMS protocol was identical to the one used in our previous studies<sup>29,30</sup>. Briefly, virgin females were mated and 3 days after delivery, each litter was separated daily from their mother 3 h/day (09:00–12:00) from postnatal day 3–12. Control animals were undisturbed during the same period; see the Supplement for details. Rats were weaned and raised under standard animal care conditions until experiments were performed. For each group, rats originated from multiple litters to avoid litter-specific effects.

### Whole-body plethysmography and tissue sampling

Ventilatory variables were measured in unrestrained, unanesthetized rats using whole-body plethysmography according to standard procedures<sup>30</sup>. 45 to 60 min prior to the recording, females were injected either with vehicle or with the selective ORX<sub>1</sub> receptor antagonist (SB334867; 15 mg/kg). Ventilation was recorded at rest (room air) followed by hypercapnic exposure (5% CO<sub>2</sub>, balance air; 10 min). CO<sub>2</sub> levels used to assess ventilatory and behavioral responsiveness varies between 5 and 35% in animals and humans<sup>31,32</sup>. The level chosen here ensured a robust ventilatory response with minimal change in behavior to avoid movement artefacts that interfere with respiratory measurements. At the end of the experiment, rats were deeply anesthetized; as NMS increases vaginal sensitivity<sup>33</sup>, determination of the estrus cycle by vaginal smear was performed only at this time to avoid influencing results. Blood and brains were then harvested to obtain post-CO<sub>2</sub> samples immunohistochemistry and quantification of plasma E<sub>2</sub> levels. Experiments were performed between 13:00 and 15:00. Note that blood and brains were also obtained from a distinct group exposed to room air to obtain baseline data for E<sub>2</sub> and quantification of ORX<sub>A</sub> in hypothalamus extracts. For setup, protocol, and data collection details, see the Supplement.

### Ovariectomy and 17 $\beta$ -estradiol (E<sub>2</sub>) replacement

Ovariectomy (OVX) was used to reduce circulating ovarian hormones chronically; surgery was performed according to standard procedures<sup>34</sup>. Two weeks after surgery, the CO<sub>2</sub> response was measured and compared between NMS and controls. A distinct group of OVX females received either vehicle (peanut oil; 100  $\mu$ l) or one E<sub>2</sub> injection (3 or 10  $\mu$ g) every 4 days to restore E<sub>2</sub> level within physiological range and mimic cyclic fluctuations. The effects of higher E<sub>2</sub> supplementation was tested in

another group of OVX females by injecting with 25  $\mu$ g. The last injections were performed on the day of the experiments. Based on the evidence suggesting that  $E_2$  inhibits ORX neurons<sup>27,28</sup>, only  $E_2$  was used in the replacement.

### ***c-Fos/orexin-A immunohistochemistry***

We first used *c-Fos* protein expression to determine whether NMS augments neuronal activation of ORX neurons in females. Based on ventilatory measurements, this initial evaluation was performed during the proestrus phase only. 40  $\mu$ m coronal brain sections were double-labeled with primary antibodies against *c-Fos* and ORX<sub>A</sub> to confirm cell phenotype. Since the physiological function of ORX neurons differs between hypothalamic sub regions<sup>35–37</sup>, single (ORX<sub>A</sub> only) and double-labeled cells were counted in the dorsomedial and lateral hypothalamus (DMH and LH, respectively) and the perifornical area (PeF). See Supplement for details.

### **Whole-cell patch-clamp recording of orexin neurons**

#### ***Identification of orexin neurons with an adeno-associated virus (AAV)***

Four weeks-old females were injected with an AAV construct that expresses a green fluorescent protein (GFP) under the control of an ORX promoter. During surgery, rats received unilateral injections (1  $\mu$ l/side) of the ORX: GFP virus in the following stereotaxic coordinates (from Bregma: RC: –2.6 mm; ML: 1.2 mm; DV: –9.0 mm). A 4-week recovery period ensured consistent GFP labeling; the intensity of GFP labeling observed in the PeF area was more apparent than in adjacent areas.

#### ***Slice electrophysiology***

Hypothalamic slices (300  $\mu$ m) containing GFP-labeled ORX neurons were used for whole-cell patch-clamp recording of basic electrophysiological properties, excitatory postsynaptic currents converging onto ORX neurons, and responses to  $E_2$  application (100 nM; 10 min).  $E_2$  concentration was based on the literature<sup>38</sup>. Slice preparation and recording procedures were performed as described previously<sup>39,40</sup>. Since ORX neurons of the LH do not contribute to cardiorespiratory regulation<sup>37</sup>, recordings were performed in the PeF/DMH. The estrus cycle was determined after the brain was harvested; data were compared between NMS and controls. See the Supplement for details.

### **Statistics**

Multifactorial analysis of variance (ANOVA) assessed the effects of NMS and estrous cycle on respiratory variables, 17 $\beta$ -estradiol ( $E_2$ ), immunohistochemical, and electrophysiological data. CO<sub>2</sub> exposure was also considered for analyses of respiratory data and  $E_2$ ; a repeated

measures design was used when appropriate; equality of variance was tested. The relationship between  $E_2$  and the ventilatory response to CO<sub>2</sub> was assessed using analysis of co-variance (ANCOVA) and a correlation *z*-test. Since patch-clamp data often originate from multiple cells from the same animal, a mixed ANOVA model (mixed-effect model) was used to ensure that between-group differences were not attributable to a specific subject<sup>41</sup>. ANOVA results are reported in the figures for clarity and conciseness. All data are presented as means  $\pm$  SEM. A significant ANOVA results ( $P \leq 0.05$ ) was followed by a *post hoc* test (Fisher's least significant difference) to identify specific differences; a Bonferroni correction was applied when multiple comparisons were performed. Analyses were performed using Statview 5.0 (SAS Institute, Cary, NC, USA) and JASP (version 0.13; University of the Netherlands).

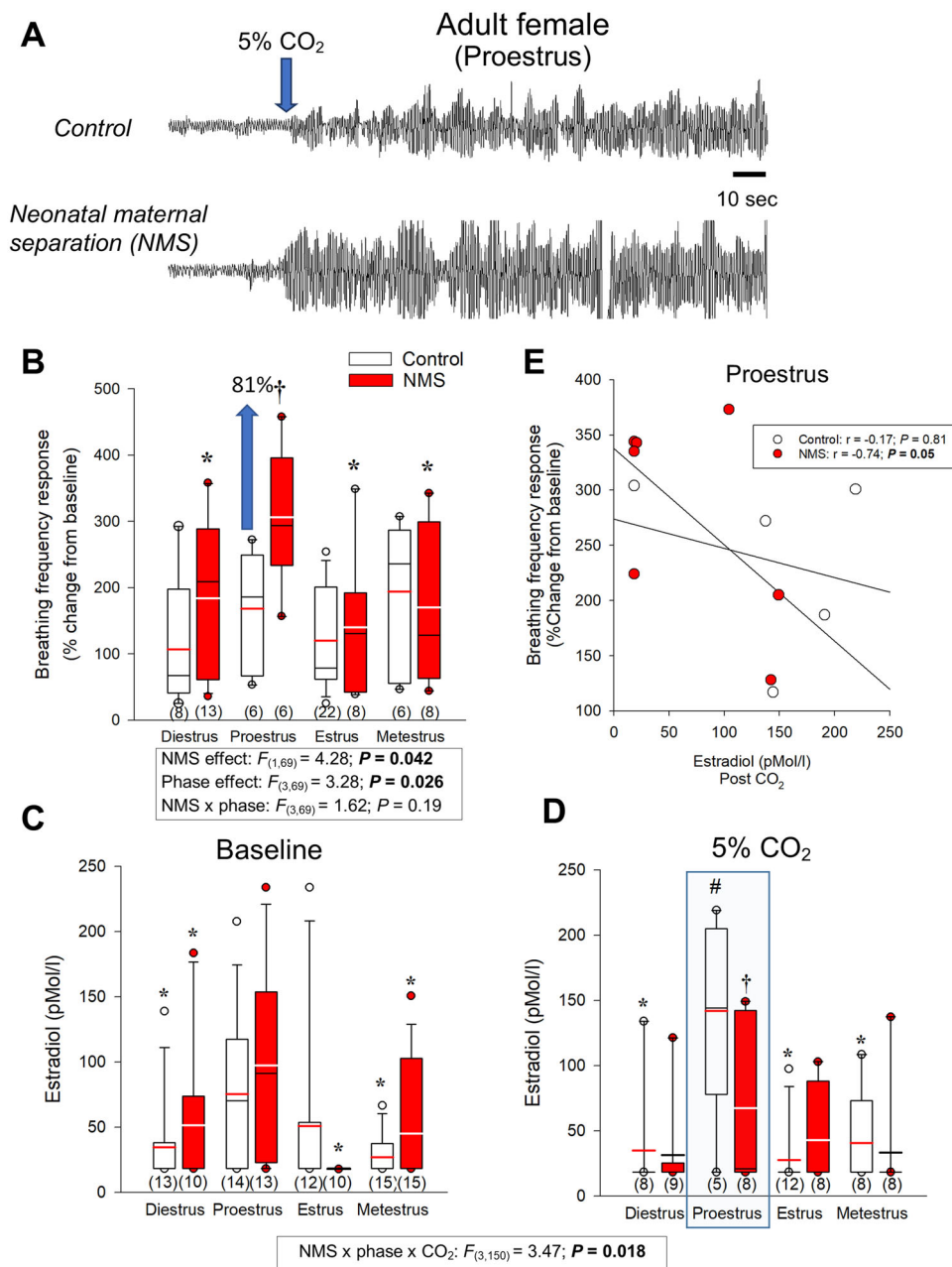
### **Results**

#### **The ventilatory response to CO<sub>2</sub> and 17 $\beta$ -estradiol ( $E_2$ ) levels across the female's reproductive status**

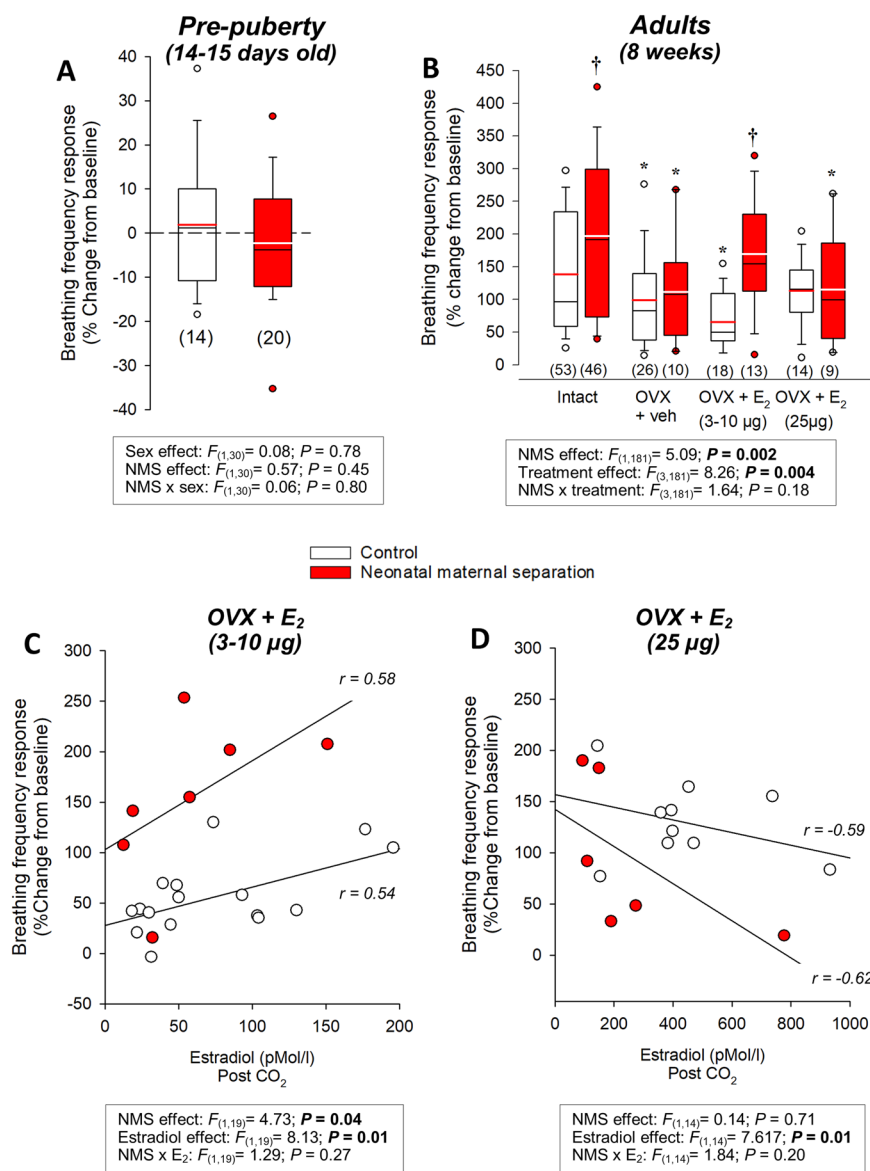
CO<sub>2</sub> inhalation induced a rapid and robust hyperpnoea, which was greater in NMS females than controls (Fig. 1A, B). The intensity of the respiratory frequency and minute ventilation responses varied across the different phases of the estrus cycle and the largest difference between NMS and controls were observed during proestrus (Fig. 1A, B and Supplementary Fig. 1B). Baseline  $E_2$  levels fluctuated across the estrus cycle and peaked during proestrus; NMS did not affect those values (Fig. 1C). During proestrus, CO<sub>2</sub> exposure augmented  $E_2$  levels in control, but not NMS females (Fig. 1D). The  $E_2$  levels measured following CO<sub>2</sub> exposure during proestrus were inversely correlated with the intensity of the breathing frequency response in NMS but not controls (Fig. 1E).

Prior to puberty, the hypercapnic ventilatory response was modest<sup>42</sup>; the response did not differ between sexes and was unaffected by NMS (Fig. 2A and see Supplementary Fig. 1C, D for effects on other respiratory variables). In adults, OVX reduced  $E_2$  levels (Supplementary Fig. 2) and the CO<sub>2</sub> response such that the intensity of the hyperpnoea was now similar between groups (Fig. 2B). In OVX females, the first  $E_2$  supplementation protocol restored plasma  $E_2$  to physiological levels (Fig. 3C) and increased the respiratory frequency response in NMS but not controls. In both groups, the response was directly proportional to  $E_2$  levels (Fig. 2B, C and Supplementary Fig. 1). While the  $E_2$  levels achieved with the second supplementation protocol exceed normal values (Fig. 2D), this treatment demonstrated that at that elevated  $E_2$  inhibits the ventilatory response to CO<sub>2</sub> (Fig. 2D and Supplementary Fig. 1E, F).

None of the ventilatory variables and other indicators of metabolism measured at rest differed between



**Fig. 1 Comparison of the hyperventilatory response to CO<sub>2</sub> inhalation (5% CO<sub>2</sub>; 10 min) between adult females raised under standard conditions or subjected to neonatal maternal separation (NMS) across the different phase of the estrus cycle. A** Original plethysmographic recording comparing ventilatory activity at rest and at the onset of CO<sub>2</sub> inhalation (blue arrow) in a female raised under control conditions (top trace) versus a female subjected to neonatal maternal separation (bottom trace; NMS: 3 h/day; postnatal days 3–12). **B** The breathing frequency response expressed as a percentage change from baseline (room air). 17 $\beta$ -estradiol (E<sub>2</sub>) levels across the estrus cycles measured **C** while breathing room air (baseline) and **D** 30 min following CO<sub>2</sub> inhalation test (5% CO<sub>2</sub>; 10 min). **E** Regression analysis comparing the relationship between E<sub>2</sub> levels during proestrus (post-CO<sub>2</sub>; blue box) and the intensity of the breathing frequency response to CO<sub>2</sub> between NMS (red circles) and control females (white circles). Box plots: the top and bottom boundaries of the box indicate the 25<sup>th</sup> and 75<sup>th</sup> percentile, respectively. Within the box, the black bar indicates the median; the other bar (red or white) indicate the mean. The error bars indicate the 10<sup>th</sup> and 90<sup>th</sup> percentiles. The numbers in brackets below the boxes indicate the number of replicates in each group. *Post hoc* pairwise comparisons were performed only when warranted by ANOVA. \*Indicates a value different from corresponding proestrus value at  $P < 0.05$ . †Indicates a value different from corresponding control value at  $P < 0.05$ .



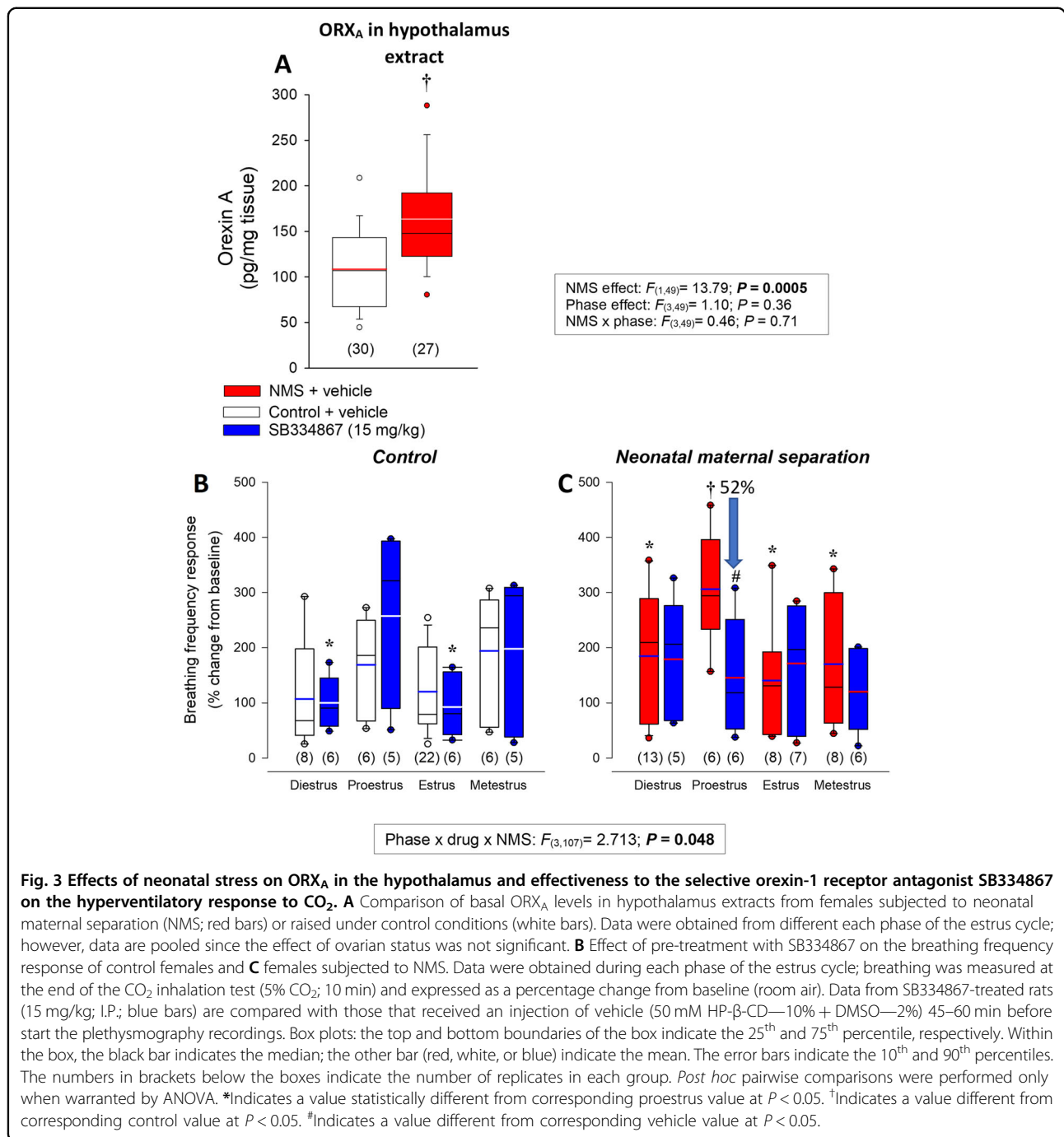
**Fig. 2 Importance of ovarian function on the breathing frequency response to CO<sub>2</sub> inhalation (5% CO<sub>2</sub>; 10 min).** Breathing frequency response to CO<sub>2</sub> inhalation (5% CO<sub>2</sub>; 10 min) in **A** pre-pubertal rat pups (14–15 days old) and **B** adult females with intact ovaries or following (OVX) with and without 17-β estradiol (E<sub>2</sub>) replacement. Data from intact adult females include females without surgical procedure (from Fig. 1) and females that subjected to sham surgery that received vehicle injections (peanut oil; 100 µl). Ovariectomy or sham surgeries were performed 2 weeks prior to ventilatory measurements. E<sub>2</sub> replacement reproduced cyclic fluctuations by performing a daily injection every 4 days over 12 days prior to the experiments (4 injections in total). Each injection contained either vehicle (peanut oil, 100 µl) or E<sub>2</sub> (3 or 10 µg; normal levels or 25 µg; high levels). The histograms represent the frequency responses expressed as a percentage change from baseline (room air). Data are compared between rats raised under standard conditions (white bars) or subjected to neonatal maternal separation (NMS; red bars). Box plots: the top and bottom boundaries of the box indicate the 25<sup>th</sup> and 75<sup>th</sup> percentile, respectively. Within the box, the black bar indicates the median; the other bar (red or white) indicate the mean. The error bars indicate the 10<sup>th</sup> and 90<sup>th</sup> percentiles. The numbers in brackets below the boxes indicate the number of replicates in each group. *Post hoc* pairwise comparisons were performed only when warranted by ANOVA. \*Indicates a value different from the corresponding intact value at  $P < 0.05$ . †Indicates a value different from the corresponding control value at  $P < 0.05$ . The relationship between plasma E<sub>2</sub> levels and the intensity of the hyperventilatory response in OVX females supplemented with **C** normal E<sub>2</sub> (3–10 µg) or **D** high E<sub>2</sub> (25 µg).

groups. Breathing frequency of “resting” OVX females was slightly higher than intact females but this was not sufficient to augment minute ventilation (Supplementary Table 1).

### Excessive ORX modulation contributes to NMS-related increase in CO<sub>2</sub> response

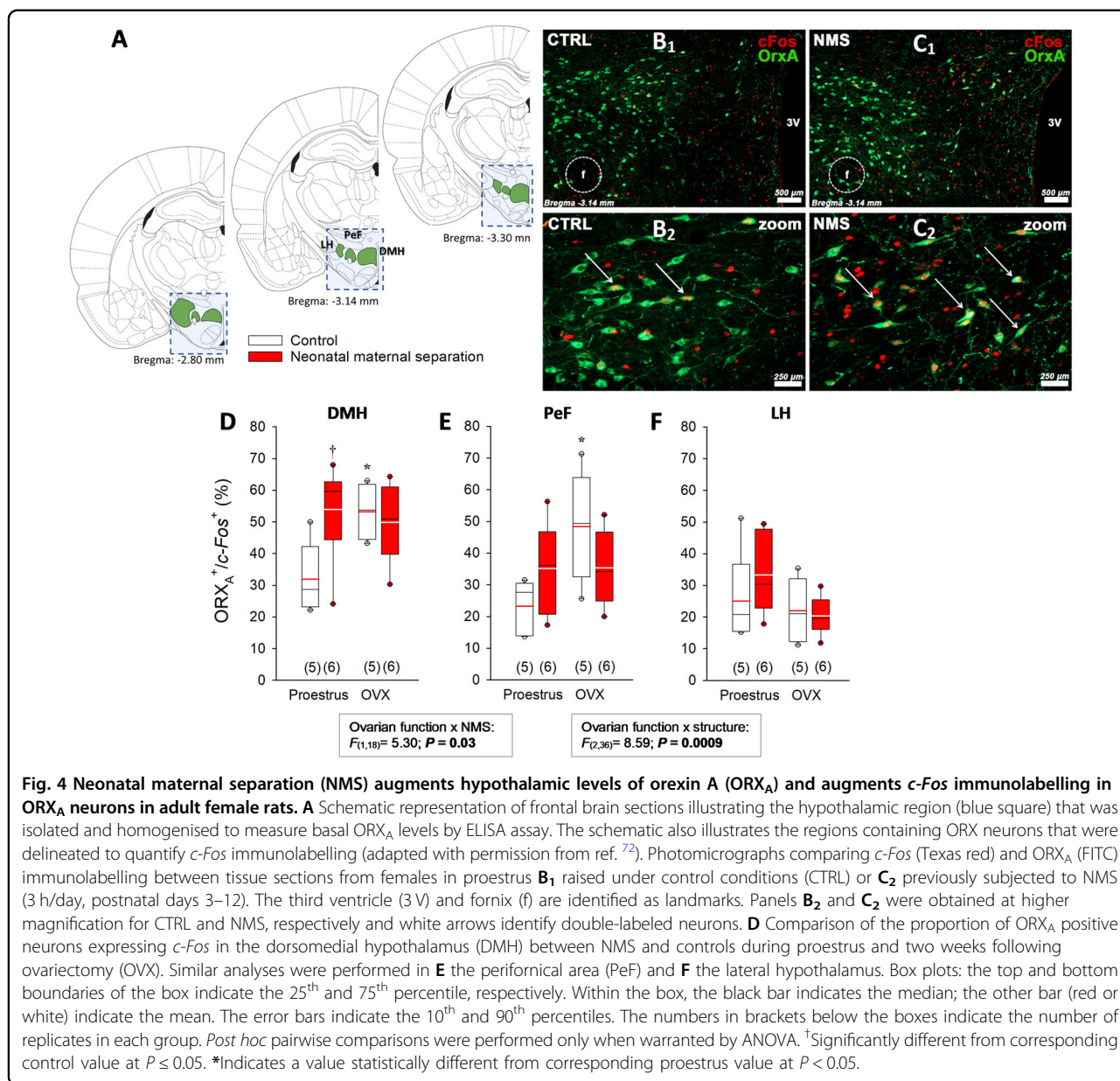
Anomalies in ORX neurotransmission contributes to the pathophysiology of a panic-prone state in rats and in





humans<sup>11–13</sup>. To determine whether enhanced ORX contributes to NMS-related increase in CO<sub>2</sub> responsiveness in females, we first quantified ORX<sub>A</sub> levels in hypothalamus extracts; values obtained in NMS females were 51% higher than controls (Fig. 3A). We then inactivated ORX<sub>1</sub> receptors by pre-treatment with SB334867. The treatment did not affect breathing at rest (Supplementary Table 1) and generally had limited effects on the CO<sub>2</sub> response; however, SB334867 prevented the excessive ventilatory response of

NMS rats during proestrus (Fig. 3C and Supplementary Fig. 3). As physiological data indicate that NMS-related anomalies in respiratory control are more important during proestrus (Fig. 1), we used *c-Fos* immunolabeling to determine if ORX neurons of NMS females were more active than control during that phase (Fig. 4). By comparing data with OVX females, we evaluated the sensitivity to E<sub>2</sub> withdrawal between groups. In the DMH, the percentage of ORX neurons expressing *c-Fos* was greater in NMS than

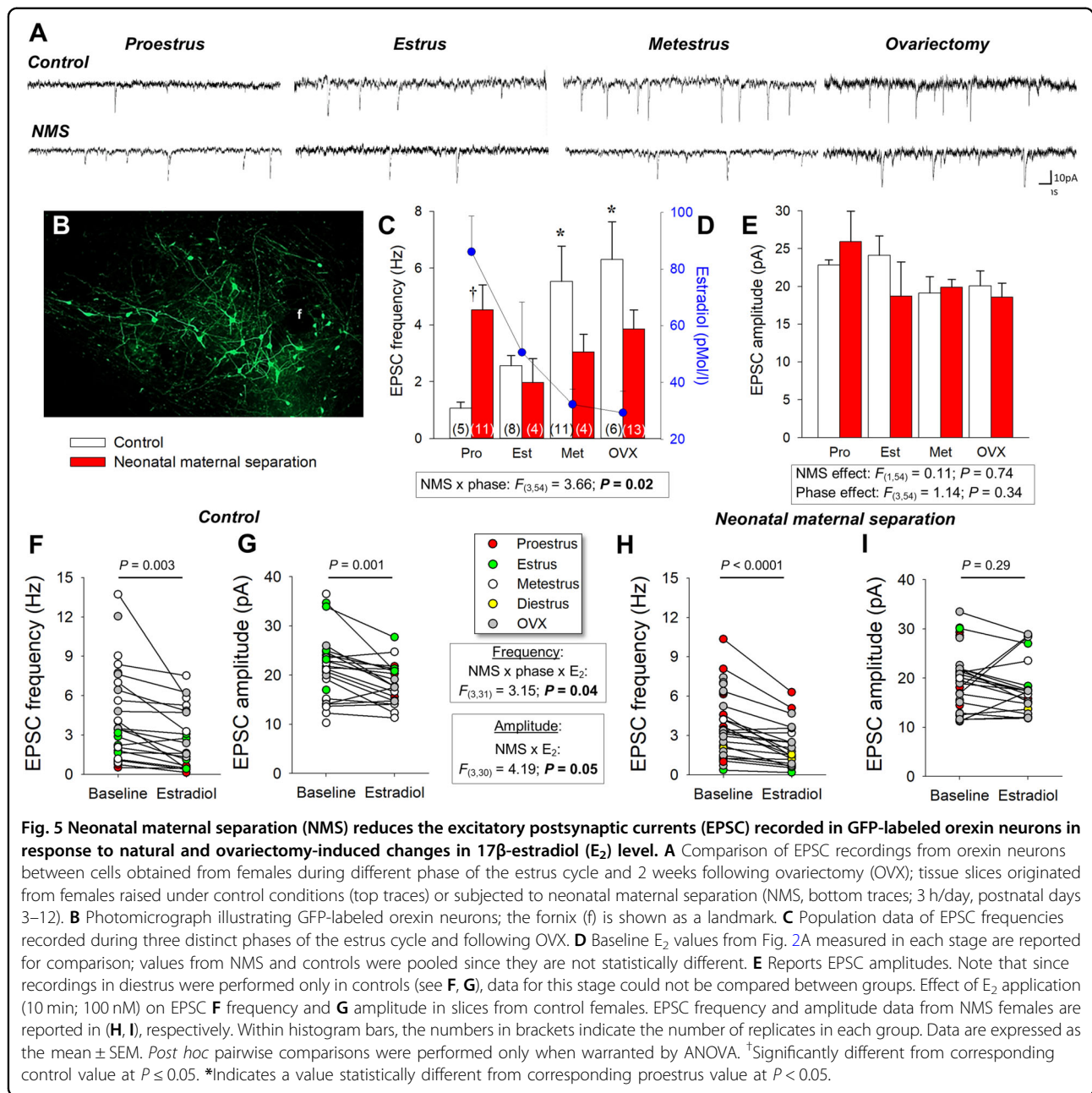


control during proestrus. Since OVX increased this ratio only in controls, the level achieved was now similar between groups (Fig. 4D). While a similar trend was observed in the PeF, neither NMS nor OVX affected the number of double-labeled cells in the LH (Fig. 4E and F, respectively).

#### Neonatal maternal separation disrupts E<sub>2</sub> regulation of orexin neurons of the PeF/DMH

As our data indicate that NMS-related potentiation of ORX action on respiratory control is the greatest during proestrus, we then used whole-cell patch-clamp recording to assess the impacts of NMS and E<sub>2</sub> on ORX neurons. In naturally cycling females, membrane potential (*V<sub>m</sub>*) did not change across the estrus cycle and values recorded in

NMS females were slightly lower than controls. However, OVX augmented cell capacitance and the resting *V<sub>m</sub>* of ORX neurons in NMS but not controls (Supplementary Table 2). None of the other basic cell properties was influenced by NMS or ovarian function (Supplementary Table 2). Ovarian status influenced the excitatory post-synaptic currents (EPSC) frequency, especially in controls (Fig. 5A, C). In those females, EPSC frequency was inversely proportional to the basal level of E<sub>2</sub> associated with each phase of the estrus cycle (Fig. 5C). In contrast with controls, ORX neurons from NMS females had the highest EPSC frequency during proestrus, when E<sub>2</sub> levels peaked (Fig. 5A, C). EPSC amplitude was not affected by NMS or the estrus cycle (Fig. 5A, E). Bath application of



E<sub>2</sub> reduced EPSCs frequency in both control and NMS; however, the largest drop was observed during proestrus in NMS females (−0.63 versus −4.09 Hz for control and NMS, respectively). E<sub>2</sub> reduced EPSC amplitude in ORX cells from control but not NMS (Fig. 5F, G–I).

### Discussion

Puberty and cyclic fluctuations in ovarian hormones are normal physiological processes but in a subpopulation of women, these events contribute to the onset and cyclic exacerbation of PD<sup>43–45</sup>. Thus, elucidating how ovarian function affects respiratory manifestations of PD is of

utmost importance to our understanding of the pathophysiology of this disorder. Early life adversities are a significant risk factor for PD and the sex-specific enhancement of the ventilatory response to CO<sub>2</sub> inhalation in rats is an attractive model to address this question<sup>29</sup>. Here, we show that in NMS females endogenous release of E<sub>2</sub> during CO<sub>2</sub> inhalation is insufficient to maintain the ventilatory response within a normal range. These data support our main hypothesis and indicate that mature (functional) ovaries are necessary to observe an excessive ventilatory response to CO<sub>2</sub> inhalation in NMS females. This, and the involvement of the ORX system in



this process strengthens the model and our demonstration that NMS disrupts E<sub>2</sub> regulation of ORX neurons point to a novel mechanism in the pathophysiology of PD in females.

#### Neonatal maternal separation affects E<sub>2</sub> signaling regulating the response to CO<sub>2</sub> inhalation

Progesterone and E<sub>2</sub> both fluctuate across the estrus cycle. However, the largest NMS-related increase in CO<sub>2</sub> response coincided with the peak in E<sub>2</sub> (proestrus) and following OVX, restoring normal E<sub>2</sub> levels alone was sufficient to reinstate an excessive ventilatory response in NMS rats. We, therefore, conclude that E<sub>2</sub> plays a primary role in the enhanced response to CO<sub>2</sub>. NMS does not affect the cyclic changes in E<sub>2</sub> or progesterone under basal conditions (Fig. 1C;<sup>46</sup>) but attenuates E<sub>2</sub> release following CO<sub>2</sub> exposure, especially during proestrus. The sympathetic system regulates ovarian E<sub>2</sub> secretion<sup>47</sup>, and ovarian aromatase expression peaks during proestrus<sup>48</sup>. Since plasma E<sub>2</sub> closely reflects brain levels<sup>49</sup>, such impairment in E<sub>2</sub> signalling within the brain of NMS females is likely. The inability of NMS females to augment E<sub>2</sub> in response to CO<sub>2</sub> during proestrus suggests that NMS reduced E<sub>2</sub> synthesis capacity and thus compromise the response to an acute challenge. The relationships between E<sub>2</sub> levels and the intensity of the ventilatory response suggest that impairment of E<sub>2</sub> signalling contributes to the abnormal respiratory phenotype of NMS females. Experiments performed on OVX females show that E<sub>2</sub> can attenuate the excessive CO<sub>2</sub> response of NMS females; however, higher levels are necessary.

#### Neonatal maternal separation augments ORX activation under basal conditions

Having previously shown that NMS does not affect the carotid body's response to CO<sub>2</sub> in male and female rats<sup>50</sup>, our investigation focused on central mechanisms regulating the ventilatory response to CO<sub>2</sub>. Orexin neurons project to key medullary areas regulating breathing, including those that generate respiratory rhythm and contribute to CO<sub>2</sub> chemosensitivity<sup>9</sup>. The clinical evidence implicating ORX in PD is important<sup>11,51</sup> and our results showing that NMS augments ORX<sub>A</sub> levels in the hypothalamus are consistent with clinical and preclinical data. A similar increase has been reported in males<sup>18</sup> but since regulation of ORX neurons likely differs between sexes<sup>19,22</sup>, testing this effect in females was necessary. ORX synthesis is activity-dependent and highly plastic<sup>52</sup>. In light of the close relationship between the hypothalamo-pituitary adrenal (HPA) axis and the ORX system<sup>19,53</sup> the enhancement of basal HPA activity commonly reported in animals and humans who experienced early life adversities could explain the higher ORX<sub>A</sub> level in hypothalamic extracts<sup>54–56</sup>. In adult rats, however,

disruption of HPA axis function by NMS is significant only in males<sup>57,58</sup>. Thus, another mechanism should be considered to explain this result.

In control females, comparison of *c-Fos* expression between females experiencing high (proestrus) and low (OVX) E<sub>2</sub> clearly supports an inhibitory action of estrogens on ORX neurons. Conversely, the high *c-Fos*/ORX<sub>A</sub> ratio observed in NMS females, regardless of the ovarian function, suggests a generally higher degree of basal activity and a reduced sensitivity to E<sub>2</sub> and/or insufficient levels. This result therefore provides a plausible explanation for greater level of ORX<sub>A</sub> in hypothalamic extracts and the larger ventilatory response to CO<sub>2</sub> inhalation. The latter interpretation is supported by fact that NMS augmented the *c-Fos*/ORX<sub>A</sub> ratio in PeF/DMH areas that, unlike the LH, regulate cardiorespiratory homeostasis<sup>37</sup>. Moreover, pre-treatment with SB334867 prevented NMS-related increase in the ventilatory response to CO<sub>2</sub>.

#### Neonatal maternal separation disrupts E<sub>2</sub> regulation of ORX neurons

ORX neurons are essential to several homeostatic functions. To the best of our knowledge, this is the first study documenting the impact of natural fluctuations in ovarian hormones (and OVX) on basic properties and excitatory synaptic inputs in females. While natural fluctuations in ovarian hormones have no impact on basic properties, the *Vm* and capacitance values obtained during the natural E<sub>2</sub> nadir (metestrus) differs from those recorded following OVX. While OVX is the gold standard in preclinical research for evaluating gonadal hormone effects in females<sup>59</sup>, these results remind us that the changes induced by OVX may be more complex than a simple reduction of circulating hormones. Keeping that limitation in mind, the opposing effects of OVX on *Vm* between NMS and controls nonetheless indicate that NMS affects the way ovarian hormones influence this important property of ORX neurons.

Orexin neurons are the target of multiple afferent signals from diverse origins<sup>10,60,61</sup>. The frequency and amplitude of spontaneous EPSC's reflect the number and the strength of excitatory synaptic inputs acting on ORX neurons, respectively. E<sub>2</sub> acts via both membrane and nuclear receptors and the results reported here provide valuable insights into the mechanisms by which endogenous E<sub>2</sub> contributes to inhibition of ORX neurons. EPSC frequencies measured in controls were inversely related to basal plasma E<sub>2</sub> levels associated with natural cyclic fluctuations or OVX; exogenous E<sub>2</sub> elicited a similar decrease in frequency in the minutes that followed its application onto slices. This implies that both E<sub>2</sub> receptor types could regulate the number of synapses converging onto ORX neurons. Conversely, the fact that

only acute  $E_2$  reduced EPSCs amplitude suggests that regulation of synaptic strength by  $E_2$  signalling is rapid but transient.

$E_2$  is generally known to promote dendritic spine formation, potentiate excitatory synaptic transmission, and reduce the efficacy of GABAergic inhibition<sup>62–65</sup>. In the cortex and the hippocampus, however, application of LY 3201 (a selective agonist of the nuclear receptor  $ER\beta$ ) can elicit an opposite response by reducing dendritic spines and increasing expression of glutamic acid decarboxylase (GAD)<sup>66</sup>. This increase in GAD expression, combined with a reduction in the expression of NMDA receptors shifts the balance between excitatory and inhibitory neurotransmission in favor of inhibition<sup>66</sup>. Together, these effects explain the anxiogenic and anxiolytic actions of  $ER\alpha$  and  $ER\beta$ , respectively<sup>67</sup>. Since  $E_2$  inhibits expression of  $ERs$ <sup>68</sup>, region-specific changes in the relative expression of  $ER\alpha$  and  $ER\beta$  likely contribute to the phase-dependent effects reported here. While NMS affects  $ER\beta$  expression in the hippocampus of males<sup>69</sup>, its impact in females is yet to be tested.

At the system level, the  $CO_2$  responses measured in controls indicate that as  $E_2$  declines across the cycle, the increased activation of ORX cells is dampened to prevent excessive hyperpnoea. Obviously, this mechanism is not fully functional in NMS females. Regulation of ORX neurons is a complex process that involves an important local network of neurons and astrocytes<sup>60</sup> but obviously, NMS reduces  $E_2$ 's actions on these cells. In fact, the  $CO_2$  response following  $E_2$  replacement in OVX NMS females suggests that depending on the concentration administered,  $E_2$  may have excitatory or inhibitory effects. Interestingly, PD is rare following menopause but  $E_2$  replacement therapy has been linked with the development of panic attacks in some patients<sup>70</sup>.

### Limitations and conclusion

Inadequate modeling of human disease hinders translation of basic knowledge into effective treatment for human<sup>21</sup>. While our study shows that NMS closely reproduces developmental and cyclic changes in the respiratory manifestations of PD and enhancement of ORX modulation, we must keep in mind that animal research cannot reproduce the complex psychosocial reality often associated with PD. Furthermore, the estrus cycle in rodents is not equivalent to the menstrual cycle in humans<sup>59</sup>. That being said, NMS nonetheless meets key criteria expected from an animal model, including time-dependent and sex-specific effects on respiration<sup>20,71</sup>. The results reported here, therefore, offer valuable insights into the basic mechanism in this neurological disorder affecting female rats. Our demonstration that NMS disrupts the inhibitory actions of  $E_2$  on respiratory control are significant as they offers new avenues to alleviate PD.

### Acknowledgements

L.T.L. was supported by National Council for Scientific and Technological Development CNPq–Brazil (206239/2014–9-PDE) and an operating grant from the Canadian Institutes of Health Research (MOP 133686 to R.K. and F.B.) and the Fondation de l'Institut Universitaire en Cardiologie et Pneumologie de Québec (R.K.). The authors acknowledge the technical support of Dr. R. Gulemetova, Dr. Olivier Pothier-Piccinin, Agathe Bernet, and Anabel Buteau-Poulin in this research. We also acknowledge the generous intellectual contributions and guidance offered by Dr. G. Drolet.

### Author details

<sup>1</sup>Hotchkiss Brain Institute; Department of Physiology and Pharmacology, University of Calgary, Calgary, AB, Canada. <sup>2</sup>Centre de Recherche de l'Institut Universitaire de Cardiologie et de Pneumologie de Québec. Département de Pédiatrie. Université Laval, Québec, QC, Canada. <sup>3</sup>INRAE, Université de Bordeaux, Bordeaux INP, Nutrineuro, UMR 1286, F-33000 Bordeaux, France. <sup>4</sup>Centre de Recherche du CHU de Québec-Université Laval, Axe Neurosciences. Département de Psychiatrie et de Neurosciences, Université Laval, Québec, QC, Canada

### Conflict of interest

The authors declare that they have no conflict of interest.

### Publisher's note

Springer Nature remains neutral with regard to jurisdictional claims in published maps and institutional affiliations.

**Supplementary Information** accompanies this paper at (<https://doi.org/10.1038/s41398-020-01076-x>).

Received: 25 September 2020 Revised: 1 October 2020 Accepted: 20 October 2020

Published online: 10 November 2020

### References

- Grassi, M. et al. Are respiratory abnormalities specific for panic disorder? A meta-analysis. *Neuropsychobiology* **70**, 52–60 (2014).
- Su, V. Y.-F. et al. Sleep apnea and risk of panic disorder. *Ann. Fam. Med.* **13**, 325–330 (2015).
- Freire, R. C. et al. Clinical features of respiratory and nocturnal panic disorder subtypes. *Psychiatry Res.* **152**, 287–291 (2007).
- Klein, D. F. False suffocation alarms, spontaneous panics, and related conditions. An integrative hypothesis. *Arch. Gen. Psychiatry* **50**, 306–317 (1993).
- Vollmer, L. L., Strawn, J. R. & Sah, R. Acid-base dysregulation and chemosensory mechanisms in panic disorder: a translational update. *Transl. Psychiatry* **5**, e572 (2015).
- Coryell, W., Pine, D., Fyer, A. & Klein, D. Anxiety responses to  $CO_2$  inhalation in subjects at high-risk for panic disorder. *J. Affect. Disord.* **92**, 63–70 (2006).
- Gorman, J. M. et al. Anxiogenic effects of  $CO_2$  and hyperventilation in patients with panic disorder. *Am. J. Psychiatry* **151**, 547–553 (1994).
- Carrive, P. & Kuwaki, T. in *Current Topics in Behavioral Neurosciences* (eds Lawrence, A. J., & de Lecea, L.), vol. 33, 157–196 (Springer, 2017).
- Grestreau, C., Bevengut, M. & Dutschmann, M. The dual role of the orexin/hypocretin system in modulating wakefulness and respiratory drive. *Curr. Opin. Pulm. Med.* **14**, 512–518 (2008).
- Li, A. & Nattie, E. E. Orexin, cardio-respiratory function and hypertension. *Front. Neurosci.* **8**, 22 (2014).
- Johnson, P. L. et al. A key role for orexin in panic anxiety. *Nat. Med.* **16**, 111–115 (2010).
- Johnson, P. L. et al. Orexin 1 and 2 receptor involvement in  $CO_2$ -induced panic-associated behavior and autonomic responses. *Depress Anxiety* **32**, 671–683 (2015).
- Johnson, P. L. et al. Activation of the orexin 1 receptor is a critical component of  $CO_2$ -mediated anxiety and hypertension but not bradycardia. *Neuropsychopharmacology* **37**, 1911–1922 (2012).
- Asselmann, E. et al. Assessing the interplay of childhood adversities with more recent stressful life events and conditions in predicting panic pathology

- among adults from the general population. *J. Affect Disord.* **225**, 715–722 (2018).
15. Battaglia, M., Ogliairi, A., D'Amato, F. & Kinkead, R. Early-life risk factors for panic and separation anxiety disorder: insights and outstanding questions arising from human and animal studies of CO<sub>2</sub> sensitivity. *Neurosci. Biobehav. Rev.* **46**, 455–464 (2014).
  16. Ogliairi, A. et al. The relationships between adverse events, early antecedents, and carbon dioxide reactivity as an intermediate phenotype of panic disorder: a general population study. *Psychother. Psychosom.* **79**, 48–55 (2010).
  17. Sargin, D. The role of the orexin system in stress response. *Neuropharmacology* **154**, 68–78 (2019).
  18. Feng, P., Vurbic, D., Wu, Z. & Strohl, K. P. Brain orexins and wake regulation in rats exposed to maternal deprivation. *Brain Res.* **1154**, 163–172 (2007).
  19. Grafe, L. A. & Bhatnagar, S. Orexins and stress. *Front. Neuroendocrinol.* **51**, 132–145 (2018).
  20. Schenberg, L. C. Towards a translational model of panic attack. *Psychol. Neurosci.* **3**, 9–37 (2010).
  21. Perry, C. J. & Lawrence, A. J. Hurdles in Basic Science Translation. *Front. Pharm.* **8**, 478–478 (2017).
  22. Grafe, L. A. & Bhatnagar, S. The contribution of orexins to sex differences in the stress response. *Brain Res.* **1731**, 145893 (2018).
  23. Beery, A. K. & Zucker, I. Sex bias in neuroscience and biomedical research. *Neurosci. Biobehav. Rev.* **35**, 565–572 (2011).
  24. Nillni, Y. I., Pineles, S. L., Rohan, K. J., Zvolensky, M. J. & Rasmussen, A. M. The influence of the menstrual cycle on reactivity to a CO<sub>2</sub> challenge among women with and without premenstrual symptoms. *Cogn. Behav. Ther.* **46**, 239–249 (2017).
  25. Reardon, L. E., Leen-Feldner, E. W. & Hayward, C. A critical review of the empirical literature on the relation between anxiety and puberty. *Clin. Psychol. Rev.* **29**, 1–23 (2009).
  26. Nillni, Y. I., Toufexis, D. J. & Rohan, K. J. Anxiety sensitivity, the menstrual cycle, and panic disorder: a putative neuroendocrine and psychological interaction. *Clin. Psychol. Rev.* **31**, 1183–1191 (2011).
  27. Russell, S. H. et al. Orexin A interactions in the hypothalamo-pituitary gonadal axis. *Endocrinology* **142**, 5294–5302 (2001).
  28. El-Sedeek, M., Korish, A. A. & Deef, M. M. Plasma orexin-A levels in postmenopausal women: possible interaction with estrogen and correlation with cardiovascular risk status. *BJOG.* **117**, 488–492 (2010).
  29. Genest, S. E., Gulemetova, R., Laforest, S., Drolet, G. & Kinkead, R. Neonatal maternal separation induces sex-specific augmentation of the hypercapnic ventilatory response in awake rat. *J. Appl. Physiol.* **102**, 1416–1421 (2007).
  30. Tenorio-Lopes, L. et al. Neonatal maternal separation opposes the facilitatory effect of castration on the respiratory response to hypercapnia of the adult male rat: Evidence for the involvement of the medial amygdala. *J. Neuroendocrinol.* **29**, e12550–e12550 (2017).
  31. Leibold, N. K. et al. Carbon dioxide inhalation as a human experimental model of panic: the relationship between emotions and cardiovascular physiology. *Biol. Psychol.* **94**, 331–340 (2013).
  32. Leibold, N. K. et al. CO<sub>2</sub> exposure as translational cross-species experimental model for panic. *Transl. Psychiatry* **6**, e885–e885 (2016).
  33. Pierce, A. N., Ryals, J. M., Wang, R. & Christianson, J. A. Vaginal hypersensitivity and hypothalamic–pituitary–adrenal axis dysfunction as a result of neonatal maternal separation in female mice. *Neuroscience* **263**, 216–230 (2014).
  34. Fournier, S., Gulemetova, R., Baldy, C., Joseph, V. & Kinkead, R. Neonatal stress affects the aging trajectory of female rats on the endocrine, temperature, and ventilatory responses to hypoxia. *Am. J. Physiol. Regul. Integr. Comp. Physiol.* **308**, R659–R667 (2015).
  35. Zhang, W., Zhang, N., Sakurai, T. & Kuwaki, T. Orexin neurons in the hypothalamus mediate cardiorespiratory responses induced by disinhibition of the amygdala and bed nucleus of the stria terminalis. *Brain Res.* **1262**, 25–37 (2009).
  36. Harris, G. C., Wimmer, M. & Aston-Jones, G. A role for lateral hypothalamic orexin neurons in reward seeking. *Nature* **437**, 556–559 (2005).
  37. Sunanaga, J., Deng, B.-S., Zhang, W., Kanmura, Y. & Kuwaki, T. CO<sub>2</sub> activates orexin-containing neurons in mice. *Respiratory Physiol. Neurobiol.* **166**, 184–186 (2009).
  38. Oberlander, J. G. & Woolley, C. S. 17 $\beta$ -Estradiol acutely potentiates glutamatergic synaptic transmission in the hippocampus through distinct mechanisms in males and females. *J. Neurosci.* **37**, 12314–12327 (2017).
  39. Fournier, S. et al. Distinct dampening effects of progesterone on the activity of nucleus tractus solitarius neurons in rat pups. *Exp. Physiol.* **104**, 463–468 (2019).
  40. Baldy, C., Chamberland, S., Fournier, S. & Kinkead, R. Sex-specific consequences of neonatal stress on cardio-respiratory inhibition following laryngeal stimulation in rat pups. *eNeuro.* **4**, ENEURO.0393-17.2017 (2017).
  41. Fournier, S. et al. Gestational stress promotes pathological apneas and sex-specific disruption of respiratory control development in newborn rat. *J. Neurosci.* **33**, 563–573 (2013).
  42. Putnam, R. W., Conrad, S. C., Gdovin, M. J., Erlichman, J. S. & Leiter, J. C. Neonatal maturation of the hypercapnic ventilatory response and central neural CO<sub>2</sub> chemosensitivity. *Respir. Physiol. Neurobiol.* **149**, 165–179 (2005).
  43. Reed, V. & Wittchen, H. U. DSM-IV panic attacks and panic disorder in a community sample of adolescents and young adults: how specific are panic attacks? *J. Psychiatr. Res.* **32**, 335–345 (1998).
  44. Lovick, T. A. Sex determinants of experimental panic attacks. *Neurosci. Biobehav. Rev.* **46P3**, 465–471 (2014).
  45. Gorman, J. M. et al. Physiological changes during carbon dioxide inhalation in patients with panic disorder, major depression, and premenstrual dysphoric disorder: evidence for a central fear mechanism. *Arch. Gen. Psychiatry* **58**, 125–131 (2001).
  46. Dumont, F. S., Biancardi, V. & Kinkead, R. Hypercapnic ventilatory response of anesthetized female rats subjected to neonatal maternal separation: Insight into the origins of panic attacks? *Respiratory Physiol. Neurobiol.* **175**, 288–295 (2011).
  47. Uchida, S. & Kagitani, F. Neural mechanisms involved in the noxious physical stress-induced inhibition of ovarian estradiol secretion. *Anat. Rec.* **302**, 904–911 (2019).
  48. Kobayashi, H., Yoshida, S., Sun, Y.-J., Shirasawa, N. & Naito, A. Changes of gastric aromatase and portal venous 17 $\beta$ -estradiol during the postnatal development and estrus cycle in female rats. *Endocrine* **46**, 605–614 (2014).
  49. Sze, Y., Gill, A. C. & Brunton, P. J. Sex-dependent changes in neuroactive steroid concentrations in the rat brain following acute swim stress. *J. Neuroendocrinol.* **30**, e12644 (2018).
  50. Soliz, J., Tam, R. & Kinkead, R. Neonatal maternal separation augments carotid body response to hypoxia in adult males but not female rats. *Front. Physiol.* **7**, 432 (2016).
  51. Flores, Á., Saravia, R., Maldonado, R. & Berrendero, F. Orexins and fear: implications for the treatment of anxiety disorders. *Trends Neurosci.* **38**, 550–559 (2015).
  52. Gao, X.-B. & Wang, A. H. Experience-dependent plasticity in hypocretin/orexin neurones: re-setting arousal threshold. *Acta Physiologica* **198**, 251–262 (2010).
  53. Winsky-Sommerer, R. et al. Interaction between the corticotropin-releasing factor system and hypocretins (orexins): a novel circuit mediating stress response. *J. Neurosci.* **24**, 11439–11448 (2004).
  54. Chintamaneni, K., Bruder, E. D. & Raff, H. Programming of the hypothalamic-pituitary-adrenal axis by neonatal intermittent hypoxia: effects on adult male ACTH and corticosterone responses are stress specific. *Endocrinology* **155**, 1763–1770 (2014).
  55. Weaver, I. C. et al. Epigenetic programming by maternal behavior. *Nat. Neurosci.* **7**, 847–854 (2004).
  56. de Kloet, E. R., Sibug, R. M., Helmerhorst, F. M. & Schmidt, M. Stress, genes and the mechanism of programming the brain for later life. *Neurosci. Biobehav. Rev.* **29**, 271–281 (2005).
  57. Wigger, A. & Neumann, I. D. Periodic maternal deprivation induces gender-dependent alterations in behavioral and neuroendocrine responses to emotional stress in adult rats. *Physiol. Behav.* **66**, 293–302 (1999).
  58. Genest, S. E., Gulemetova, R., Laforest, S., Drolet, G. & Kinkead, R. Neonatal maternal separation and sex-specific plasticity of the hypoxic ventilatory response in awake rat. *J. Physiol.* **554**, 543–557 (2004).
  59. Koebele, S. V. & Bimonte-Nelson, H. A. Modeling menopause: The utility of rodents in translational behavioral endocrinology research. *Maturitas* **87**, 5–17 (2016).
  60. Burt, J., Alberto, C. O., Parsons, M. P. & Hirasawa, M. Local network regulation of orexin neurons in the lateral hypothalamus. *Am. J. Physiol. Regul. Integr. Comp. Physiol.* **301**, R572–R580 (2011).
  61. Sakurai, T. The role of orexin in motivated behaviours. *Nat. Rev. Neurosci.* **15**, 719–731 (2014).
  62. Woolley, C. S. Acute effects of estrogen on neuronal physiology. *Annu. Rev. Pharmacol. Toxicol.* **47**, 657–680 (2007).

63. Woolley, C. & McEwen, B. Estradiol mediates fluctuation in hippocampal synapse density during the estrous cycle in the adult rat. *J. Neurosci.* **12**, 2549–2554 (1992).
64. Smejkalova, T. & Woolley, C. S. Estradiol acutely potentiates hippocampal excitatory synaptic transmission through a presynaptic mechanism. *J. Neurosci.* **30**, 16137–16148 (2010).
65. Mukherjee, J. et al. Estradiol modulates the efficacy of synaptic inhibition by decreasing the dwell time of GABA<sub>A</sub> receptors at inhibitory synapses. *Proc. Natl Acad. Sci. USA* **114**, 11763–11768 (2017).
66. Tan, X.-j et al. Reduction of dendritic spines and elevation of GABAergic signaling in the brains of mice treated with an estrogen receptor  $\beta$  ligand. *Proc. Natl Acad. Sci. USA* **109**, 1708–1712 (2012).
67. Walf, A. A. & Frye, C. A. A review and update of mechanisms of estrogen in the hippocampus and amygdala for anxiety and depression behavior. *Neuropsychopharmacology* **31**, 1097–1111 (2006).
68. Murata, T., Narita, K. & Ichimaru, T. Rat Uterine Oxytocin Receptor and Estrogen Receptor  $\alpha$  and  $\beta$  mRNA Levels are Regulated by Estrogen Through Multiple Estrogen Receptors. *J. Reprod. Dev.* **60**, 55–61 (2014).
69. Wang, H., Meyer, K. & Korz, V. Stress induced hippocampal mineralocorticoid and estrogen receptor  $\beta$  gene expression and long-term potentiation in male adult rats is sensitive to early-life stress experience. *Psychoneuroendocrinology* **38**, 250–262 (2013).
70. Kunte, H., Harms, L., Plag, J., Hellweg, R. & Kronenberg, G. Acute onset of panic attacks after transdermal estrogen replacement. *Gen. Hospital Psychiatry* **36**, e7 (2014).
71. Moreira, F. et al. Modeling panic disorder in rodents. *Cell Tissue Res.* **354**, 1–7 (2013).
72. Paxinos, G. & Watson, C. *The rat brain in stereotaxic coordinates*. 4th Edition edn. (Academic Press, San Diego, 1998).