

RESEARCH ARTICLE

Open Access



# Comprehensive transcriptome analysis identifies novel molecular subtypes and subtype-specific RNAs of triple-negative breast cancer

Yi-Rong Liu<sup>1,2,3†</sup>, Yi-Zhou Jiang<sup>1,2,3†</sup>, Xiao-En Xu<sup>1,2,3</sup>, Ke-Da Yu<sup>1,2,3</sup>, Xi Jin<sup>1,2,3</sup>, Xin Hu<sup>1,2,3</sup>, Wen-Jia Zuo<sup>1,2,3</sup>, Shuang Hao<sup>1,2,3</sup>, Jiong Wu<sup>1,2,3</sup>, Guang-Yu Liu<sup>1,2,3</sup>, Gen-Hong Di<sup>1,2,3</sup>, Da-Qiang Li<sup>1,2,3,4</sup>, Xiang-Huo He<sup>1,2,3,4</sup>, Wei-Guo Hu<sup>1,2,3,4</sup> and Zhi-Ming Shao<sup>1,2,3,4\*</sup>

## Abstract

**Background:** Triple-negative breast cancer (TNBC) is a highly heterogeneous group of cancers, and molecular subtyping is necessary to better identify molecular-based therapies. While some classifiers have been established, no one has integrated the expression profiles of long noncoding RNAs (lncRNAs) into such subtyping criteria. Considering the emerging important role of lncRNAs in cellular processes, a novel classification integrating transcriptome profiles of both messenger RNA (mRNA) and lncRNA would help us better understand the heterogeneity of TNBC.

**Methods:** Using human transcriptome microarrays, we analyzed the transcriptome profiles of 165 TNBC samples. We used k-means clustering and empirical cumulative distribution function to determine optimal number of TNBC subtypes. Gene Ontology (GO) and pathway analyses were applied to determine the main function of the subtype-specific genes and pathways. We conducted co-expression network analyses to identify interactions between mRNAs and lncRNAs.

**Results:** All of the 165 TNBC tumors were classified into four distinct clusters, including an immunomodulatory subtype (IM), a luminal androgen receptor subtype (LAR), a mesenchymal-like subtype (MES) and a basal-like and immune suppressed (BLIS) subtype. The IM subtype had high expressions of immune cell signaling and cytokine signaling genes. The LAR subtype was characterized by androgen receptor signaling. The MES subtype was enriched with growth factor signaling pathways. The BLIS subtype was characterized by down-regulation of immune response genes, activation of cell cycle, and DNA repair. Patients in this subtype experienced worse recurrence-free survival than others (log rank test,  $P = 0.045$ ). Subtype-specific lncRNAs were identified, and their possible biological functions were predicted using co-expression network analyses.

**Conclusions:** We developed a novel TNBC classification system integrating the expression profiles of both mRNAs and lncRNAs and determined subtype-specific lncRNAs that are potential biomarkers and targets. If further validated in a larger population, our novel classification system could facilitate patient counseling and individualize treatment of TNBC.

**Keywords:** Molecular subtypes, Messenger RNA, Long non-coding RNA, Triple-negative breast cancer, Transcriptome analysis

\* Correspondence: zhimingshao@yahoo.com

†Equal contributors

<sup>1</sup>Department of Breast Surgery, Fudan University Shanghai Cancer Center, 270 Dong-An Road, Shanghai 200032, P.R. China

<sup>2</sup>Cancer Institute, Fudan University Shanghai Cancer Center, 270 Dong-An Road, Shanghai 200032, P.R. China

Full list of author information is available at the end of the article



## Background

Contrary to their description in previous studies as being useless transcripts, long noncoding RNAs (lncRNAs) are emerging as important regulators in gene regulation and other cellular processes [1–6]. Recent studies have proved that lncRNAs are tightly correlated with disease processes, including cancer [4, 7–10]. The roles of lncRNAs in breast cancer have also been widely researched, and a number of novel mechanisms have been proposed [1–3, 11]. As with other cancers, lncRNAs are involved in several developmental and tumorigenic processes of breast cancer. Liu et al. [2] reported that the lncRNA *NIKLA*, can directly interact with the functional domains of signaling proteins, serving as a class of NF- $\kappa$ B modulators to suppress breast cancer metastasis. Another lncRNA, *BRCA4*, was reported to direct cooperative epigenetic regulation downstream of chemokine signals, and its expression correlated with advanced breast cancer [12]. Gupta et al. [13] observed increased expression of the lncRNA, *HOTAIR*, in primary breast tumors and metastases, and *HOTAIR* expression level in primary tumors was a powerful predictor of eventual metastasis and death. Considering the important role of lncRNAs in breast cancer tumorigenesis and development, the study of lncRNAs might aid in understanding the nature of this malignant disease.

One of the most aggressive breast cancer subtypes is triple-negative breast cancer (TNBC), which lacks estrogen receptor (ER) and progesterone receptor (PR) expression and human epidermal growth factor receptor 2 (HER2) amplification [14, 15]. TNBC represents approximately 10–20 % of all breast cancers and has a larger tumor size, higher grade, more positive lymph nodes, and poorer prognosis than other subtypes of breast cancer [16, 17]. Due to the heterogeneity of the disease and the absence of well-defined molecular targets, treatment of TNBC remains a clinical challenge. Differences were observed in the responses of patients with TNBC to the same adjuvant chemotherapy. Thus, further classifying this aggressive disease subtype and treating patients accordingly is a top priority and would greatly benefit patients.

Several former studies have achieved significant progresses in classifying TNBC. By analyzing publically available expression data for messenger RNA (mRNA), Lehmann et al. [18] advanced the knowledge of TNBC and classified TNBC into six subtypes: 1) luminal androgen receptor positive (LAR); 2) claudin-low-enriched mesenchymal (M); 3) mesenchymal stem-like (MSL); 4) immune response (M); and two cell cycle-disrupted basal subtypes, 5) basal-like-1 (BL1) and 6) basal-like-2 (BL2). In the present study, we refer to this as the Lehmann/Pietenpol classification. However, a subsequent study using the Lehmann/Pietenpol classification could not readily distinguish BL1 and BL2 tumors [19]. Moreover, with recent developments in high-throughput (gene sequencing)

technology, our knowledge of breast cancer is ever expanding, and a classification based merely on gene expression levels may be insufficient (for prospective individualized cancer treatment). A new classification system based on the integrated expression profiles of mRNAs and lncRNAs might offer more comprehensive data and identify stable subtypes and subtype-specific targets.

Collectively, we questioned the possibility and utility of subtyping TNBCs using whole-transcriptome expression analysis. By integrating the expression profiles of both mRNAs and lncRNAs, we successfully classified 165 TNBC tumors into four distinct subtypes, each displaying unique gene expression and ontology. Furthermore, we identified subtype-specific lncRNAs and predicted their possible biological functions using co-expression network analysis. Our novel classification system could facilitate individualized treatment for patients with TNBC if validated in other reliable cohorts.

## Methods

### Patient recruitment

The present prospective observational study was initiated on 1 January 2011. Patients who were diagnosed with malignant breast cancer and willing to participate in the study were recruited. A total of 165 consecutive patients treated in the Department of Breast Surgery at Fudan University Shanghai Cancer Center (FUSCC) from 1 January 2011 to 31 December 2012 were enrolled according to the following inclusion criteria: 1) female patients diagnosed with unilateral invasive ductal carcinoma with phenotype ER-, PR-, and HER2-; 2) pathologic examination of tumor specimens performed by the Department of Pathology at FUSCC. The ER, PR and HER2 status was reconfirmed by two experienced pathologists (WTY and RHS) based on immunochemical analysis and *in situ* hybridization [20]; 3) patients without any evidence of metastasis at diagnosis; and 4) sufficient frozen tissue for further research. Patients with breast carcinoma *in situ* (with or without microinvasion) and inflammatory breast cancer were excluded. Clinicopathological characteristics (including age, menopausal status, tumor histologic type, tumor size, lymph node status, histologic grade, ER, PR, HER2, Ki67, and adjuvant therapies) and local and distant extent of disease (evaluated by chest computed tomography (CT), bone scan, abdominal ultrasound, bilateral mammography, breast ultrasound or magnetic resonance imaging (MRI)) were collected [21].

Follow up of patients in the cohort was completed on 31 December 2014. The median length of follow up was 13.9 months (interquartile range, 8.6–21.1 months). Our definition of recurrence-free survival (RFS) events included: the first recurrence of invasive disease at a local, regional, or distant site; the diagnosis of contralateral

breast cancer; and death from any causes. Patients without events were censored at the last follow up.

All tissue samples included in this study were obtained with approval of the independent ethical committee/institutional review board at Fudan University Shanghai Cancer Center Ethical Committee, and each patient signed an informed consent form.

#### **Sample preparation and microarray experiment**

Tumor tissues were macro-dissected to avoid the influence of stromal tissues (<10 %). The percentage of tumor cells was confirmed to be 90 % or more in all breast cancer specimens. Total RNA was isolated from 165 frozen TNBC samples using the Rneasy Plus Mini Kit (Qiagen, Valencia, CA, USA). The purity and quantity of total RNA were estimated by measuring absorbance at 260 nm (A260) and 280 nm (A280) with RNase-free water as a blank control, using a NanoDrop 2000 spectrophotometer (Thermo Scientific, Wilmington, DE, USA). Only when the ratio of A260/A280 was within 1.9–2.1, were the extracted RNAs deemed as pure and suitable for future experimentation. Microarray analysis was performed using the Affymetrix Human Transcriptome Array 2.0 (HTA 2.0) GeneChips (Affymetrix, Santa Clara, CA, USA) as previously described [22].

#### **The mRNA-lncRNA-based TNBC subtyping and the Lehmann/Pietenpol classification**

We performed *k*-means clustering and consensus clustering to determine the optimal number of stable TNBC subtypes. Cluster robustness was assessed by consensus clustering using agglomerative *k*-means clustering (1,000 iterations), with average linkage on the 165 TNBC profiles using the 2,535 most differentially expressed genes ( $SD > 0.65$ ) (Gene Pattern version 3.2.1, <http://www.broadinstitute.org/cancer/software/genepattern/>). The optimal number of clusters was determined from the empirical cumulative distribution function (CDF), which plots the corresponding empirical cumulative distribution, defined over the range, and from calculation of the proportion increase in the area under the CDF curve [18]. In addition, we considered the number of patients in each subtype. If there were fewer than five patients in one subtype, we deemed the classification as unstable. Thus, the optimum number of clusters moved to the minor number.

The Lehmann/Pietenpol classification system was established by analyzing 587 TNBC gene expression profiles from 21 publicly available datasets [18]. The authors have developed a web-based subtyping tool for classifying TNBC samples based on their collected gene expression meta-data [23]. Using this web-based algorithm [23] (<http://cbc.mc.vanderbilt.edu/tnbc/>), we obtained subtypes of our samples in the Lehmann/Pietenpol classification system. Spearman's correlation analysis was used

to assess the relationship between the Lehmann/Pietenpol classification system and our novel system.

#### **Gene Ontology (GO) and pathway analysis**

GO analysis was applied to analyze the main function of the subtype-specific genes according to the GO database, which is the key functional classification of the National Center for Biotechnology Information (NCBI). The analysis can organize genes into hierarchical categories and uncover the gene regulatory network based on biological process and molecular function [24–26]. Meanwhile, pathway analysis was used to determine the significant pathways of the differential genes according to the Kyoto Encyclopedia of Genes and Genomes database (KEGG) [27]. The Pearson chi-square test and Fisher's exact test were used to select the significant pathway.

#### **Co-expression network analysis**

To identify interactions between mRNAs and lncRNAs, we constructed co-expression networks [28]. We pre-processed the data using the median expression value of all transcripts and then screened for differentially expressed lncRNAs and mRNAs among subtypes. For each pair of genes analyzed, we calculated the Pearson correlation and chose pairs (only lncRNA-mRNA) with significant correlation in order to construct the network ( $P < 0.05$ ). To make a visual representation, only those with the strongest correlation (correlation coefficient  $\geq 0.95$ ) were included in the renderings. The co-expression networks were drawn using Cytoscape 2.8.2 [29], which is open-source software for integration, analysis and visualization of biological networks.

#### **Statistical analysis**

All analyses were performed according to the reporting recommendations for tumor marker prognostic studies (REMARK) for prognostic and tumor marker studies, and the respective guidelines of microarray-based studies for clinical outcomes. Frequency tabulation and summary statistics were used to characterize the data distribution. Student's *t* test was utilized to compare continuous variables, and the Pearson chi-square test was employed for the comparison of categorical variables. Survival curves were constructed using the Kaplan–Meier method and compared between subtypes with the log rank test. Survival analyses were performed using SPSS 20.0 (SPSS Inc., Chicago, IL, USA). All tests were two-sided, and  $P < 0.05$  was regarded as significant, unless otherwise stated.

#### **Microarray data**

Microarray data have been deposited into the Gene Expression Omnibus (GEO) database (<http://www.ncbi.nlm.nih.gov/geo/>) [GEO:GSE76250].

## Results

### Transcriptome profiling of TNBC reveals four stable molecular subtypes

According to the inclusion criteria, a total of 165 TNBC samples qualified for the present study. To identify global differences in transcriptome profiles in TNBC subtypes, we performed *k*-means clustering on the most differentially expressed mRNAs and lncRNAs ( $SD > 0.65$ ). All 165 TNBC tumors were classified into four stable clusters (Figs. 1 and 2). The robustness of the classification was analyzed by consensus clustering involving *k*-means clustering by resampling (1,000 iterations) randomly selected tumor profiles (Fig. 1). Clinical and pathological characteristics of patients with TNBC are presented according to the four subtypes (Table 1).

To understand the nature of each subtype in our system, GO and pathway analyses were performed to determine the top GO and canonical pathways associated with TNBC subtypes. Each subtype, presenting distinct regulator activation and inhibition patterns, was characterized based on the results. The results were correlated with the distribution of the Lehmann/Pietenpol subtypes in our new classification system, which we named the FUSCC classification. Detailed GO and pathway analysis results of each subtype are presented in Additional file 1: Table S1.

#### Cluster A: the immunomodulatory (IM) subtype

In concordance with the Lehmann/Pietenpol classification, the IM subtype presented unique GOs and pathways involving immune cell process. These processes included cytokine signaling (cytokine-cytokine receptor interaction), immune cell signaling (T-cell receptor signaling pathway, B-cell receptor signaling pathway), antigen processing and

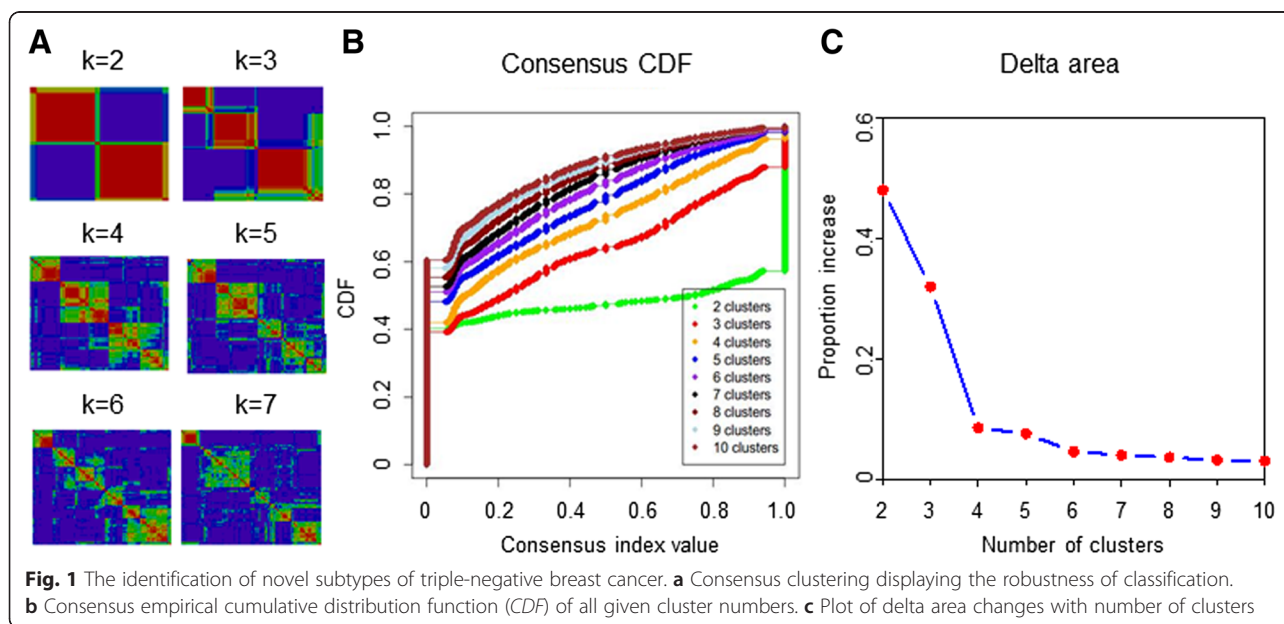
presentation, chemokine signaling pathway, and immune signal transduction pathway (NF- $\kappa$ B signaling pathway). The most upregulated gene functions were tightly connected with immune functions, such as immune response, T cell co-stimulation, and innate immune response. The genes involved in the most significantly upregulated functions are also involved in the immune response process (*CCR2*, *CXCL13*, *CXCL11*, *CD1C*, *CXCL10*, and *CCL5*), which further confirmed the major role of functions related to immunity in this subtype.

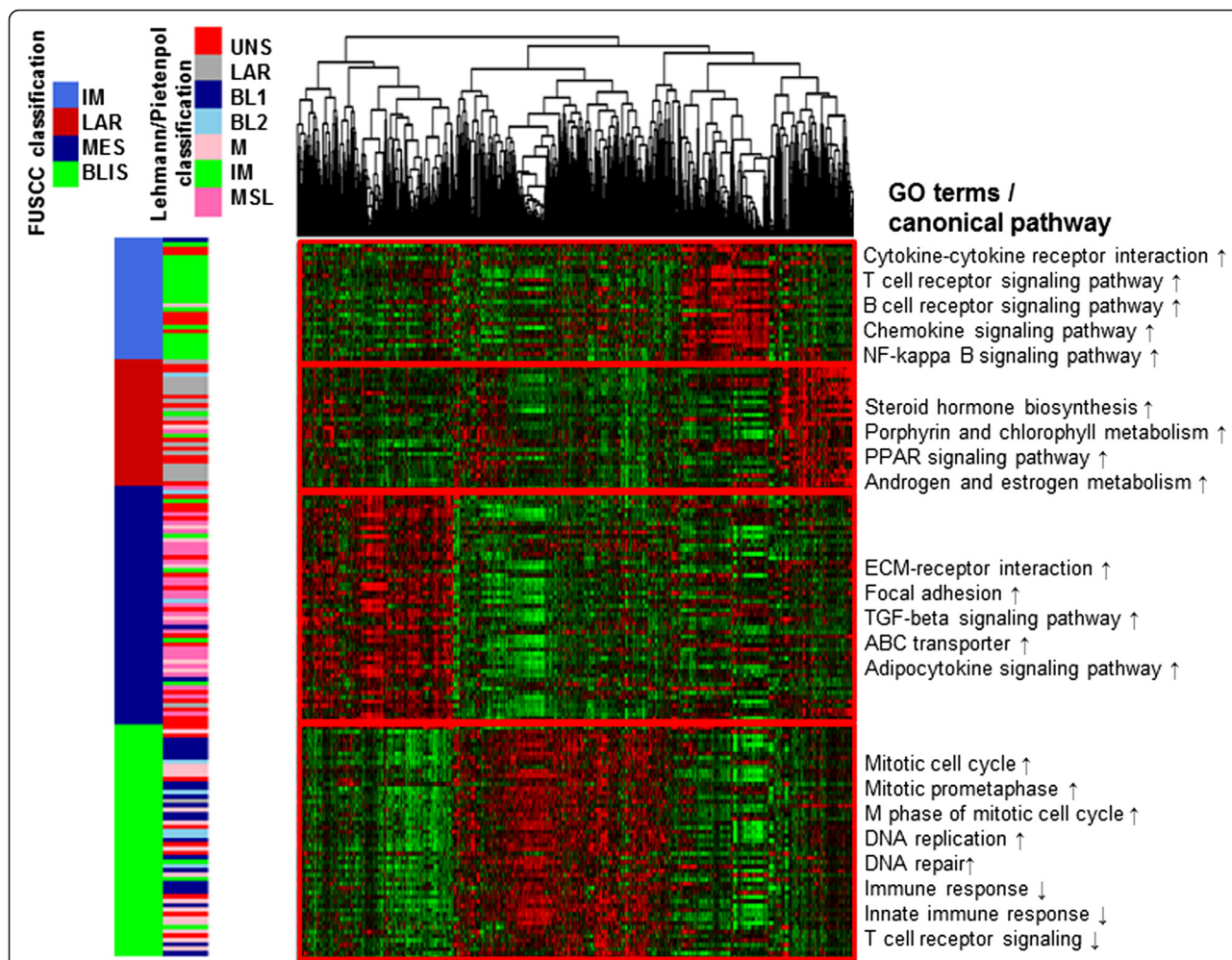
#### Cluster B: the luminal androgen receptor (LAR) subtype

The LAR type displayed unique GOs, which were highly enriched in hormonally regulated pathways. Androgen and estrogen metabolism, steroid hormone biosynthesis, porphyrin and chlorophyll metabolism, and peroxisome proliferator-activated receptor (PPAR) signaling pathways were significantly elevated in this subtype. Although these tumors were confirmed to be TNBC by immunohistochemical analysis, the gene expression profiling demonstrated an upregulated estrogen signaling pathway. These results suggested this subtype might respond to anti-androgen and traditional anti-estrogen therapies. Thus, to be consistent with previous studies, we classified this as the LAR subtype [18, 30].

#### Cluster C: the mesenchymal-like (MES) subtype

This cluster displayed a variety of unique GOs and involved pathways. Enriched pathways in this subtype included extracellular matrix (ECM)-receptor interaction, focal adhesion, and transforming growth factor (TGF)-beta signaling pathway, and processes linked to growth factor signaling pathways (ABC transporter and adipocytokine signaling





**Fig. 2** A heat map shows the relative expression of the top differentially expressed RNAs ( $SD > 0.65$ ) in each subtype. Top Gene Ontology (GO) and canonical pathways of each subtype are shown (left). Upward-pointing arrow upregulated function, downward-pointing arrow downregulated function. FUSCC Fudan University Shanghai Cancer Center, IM immunomodulatory, LAR luminal androgen receptor, MES mesenchymal-like, BLIS basal-like and immune suppressed, BL basal-like, M claudin-low-enriched mesenchymal, MSL mesenchymal stem-like, ECM extracellular matrix, TGF transforming growth factor

pathway). Moreover, the MES subtype had low levels of genes related to cell proliferation. The decreased proliferation involved the process of cell division (*CCNE2*, *PARD6B*, *CDCA2*, *KIF2C*, *SKA1*, *NEK2*, *CDK1*, *CDC6*), mitotic cell cycle (*NDC80*, *CENPW*, *MAD2L1*, *CENPI*, *CCNB1*, *CENPF*, *CCNA2*), mitotic prometaphase (*MAD2L1*, *NCAPG*, *SGOL1*, *KIF18A*, *PLK1*), and mitosis (*ASPM*, *HELLS*, *KIF11*, *NUF2*). The major subtype of the Lehmann/Pietenpol classification in this cluster was MSL (Figs. 2 and 3). Altogether, we named this cluster the MES subtype.

**Cluster D: the basal-like and immune-suppressed (BLIS) subtype**

For this subtype, the top GOs were enriched in cell division and cell cycle related pathways (mitotic cell cycle, mitotic prometaphase, M phase of mitotic cell cycle, DNA replication, and DNA repair). The enhanced expression of

genes associated with proliferation, such as *CENPF*, *BUB1*, *PRC1*, further supported the highly proliferative nature of this subtype. Meanwhile, genes involved in immune responses (immune response and innate immune response), immune cell signaling pathways (T cell co-stimulation, T cell receptor signaling pathway, B cell activation, and dendritic cell chemotaxis) and complement activation processes were significantly downregulated. Previous survival analysis indicated that patients in the BLIS subtype experienced worse RFS compared to other patients. This finding is in concordance with the highly proliferative and immune-suppressed nature of these tumors.

**Association between the FUSCC classification and the Lehmann/Pietenpol classification system**

In the Lehmann/Pietenpol classification system [18], TNBCs were classified into seven subtypes (BL1, BL2,

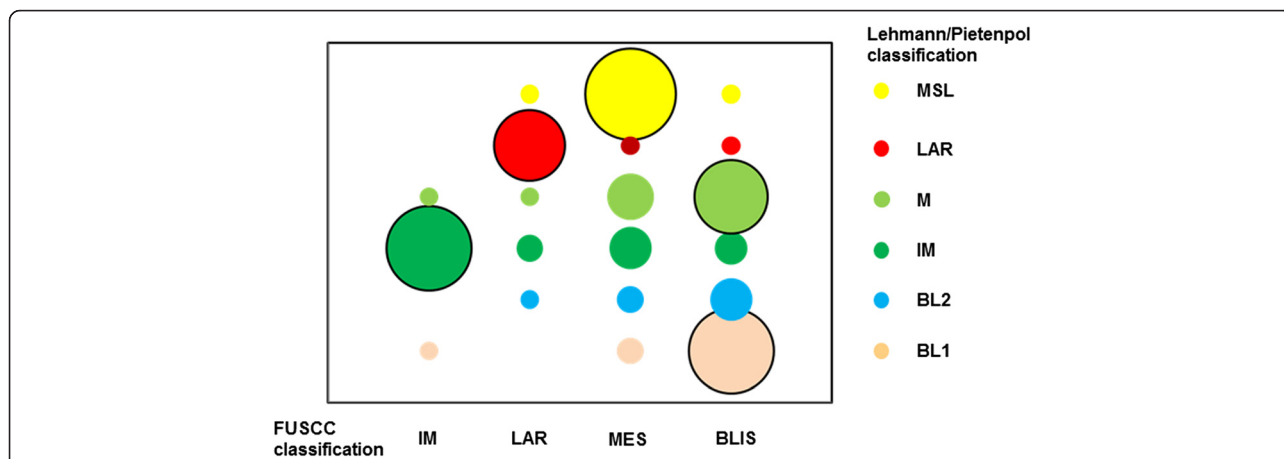
**Table 1** Clinicopathological characteristics of the four TNBC subtypes based on the FUSCC classification criteria

Characteristics	Number (total = 165)	FUSCC subtypes				<i>P</i>
		IM n = 28	LAR n = 29	MES n = 55	BLIS n = 53	
Age, y						0.024
≤50	68	14 (50.0)	6 (20.7)	20 (36.4)	28 (52.8)	
>50	97	14 (50.0)	23 (79.3)	35 (63.6)	25 (47.2)	
Menopause						0.160
Yes	101	16 (57.1)	23 (79.3)	33 (60.0)	29 (54.7)	
No	64	12 (42.9)	6 (20.7)	22 (40.0)	24 (45.3)	
Tumor size, cm						0.409
≤2 cm	58	14 (50.0)	12 (41.4)	15 (27.3)	17 (32.1)	
>2 cm	104	13 (46.4)	17 (58.6)	39 (70.9)	35 (66.0)	
Unknown	3	1 (3.6)	0 (0.0)	1 (1.8)	1 (1.9)	
Tumor grade						0.311
≤II	32	4 (14.3)	9 (31.0)	13 (23.6)	6 (11.3)	
>II	104	17 (60.7)	17 (58.6)	33 (60.0)	37 (69.8)	
Unknown	29	7 (25.0)	3 (10.3)	9 (16.4)	10 (18.9)	
Ki67, %						0.286
<14	8	0 (0.0)	0 (0.0)	3 (5.5)	5 (9.4)	
≥14	156	28 (100.0)	29 (100.0)	51 (92.7)	48 (90.6)	
Unknown	1	0 (0.0)	0 (0.0)	1 (1.8)	0 (0.0)	
Positive lymph nodes						0.019
0	86	8 (28.6)	13 (44.8)	28 (50.9)	37 (69.8)	
1-3	29	6 (21.4)	5 (17.2)	10 (18.2)	8 (15.1)	
>3	50	14 (50.0)	11 (37.9)	17 (30.9)	8 (15.1)	
Chemotherapy						0.642
Taxane-based	124	21 (75.0)	22 (75.9)	42 (76.4)	39 (73.6)	
Non-taxane-based	27	5 (17.9)	3 (10.3)	11 (20.0)	8 (15.1)	
Unknown	14	2 (7.1)	4 (13.8)	2 (3.6)	6 (11.3)	
Radiotherapy						0.038
Yes	50	16 (57.1)	9 (31.0)	14 (25.5)	11 (20.8)	
No	103	11 (39.3)	20 (69.0)	37 (67.3)	35 (66.0)	
Unknown	12	1 (3.6)	0 (0.0)	4 (7.3)	6 (11.3)	
Follow up, month						
Median	13.9	14.7	12.4	14.3	12.6	
IQR	8.6–21.1	10.0–22.4	8.6–19.0	10.6–21.5	8.0–18.4	
RFS events	22	5	4	4	9	

BLIS basal-like and immune suppressed, FUSCC Fudan University Shanghai Cancer Center, IM immunomodulatory, IQR interquartile range, LAR luminal androgen receptor, MES mesenchymal-like, RFS recurrence-free survival

LAR, M, IM, MSL, and UNS), whereas according to the FUSCC system, TNBC tumors were divided into four stable subtypes. We then investigated to what extent the FUSCC subtypes based on integrated mRNA-lncRNA expression were associated with the mRNA-based Lehmann/Pietenpol classification (Fig. 2). In Spearman's correlation analysis, we found that the two classification systems were significantly

associated with each other ( $P = 0.039$ ). Further analysis of the distribution of the Lehmann/Pietenpol subtypes in the FUSCC classification system revealed that our subtype IM was nearly identical to the Lehmann/Pietenpol IM type; our subtype LAR mainly contained the LAR type; our subtype MES included all six of the Lehmann/Pietenpol subtypes, with the MSL and M subtypes accounting for the



**Fig. 3** Interaction analysis of the Lehmann/Pietenpol and Fudan University Shanghai Cancer Center (FUSCC) classifications. X-axis shows the subtypes of the new system. Circle size varies in proportion to the number of samples. MSL mesenchymal stem-like, LAR luminal androgen receptor, M claudin-low-enriched mesenchymal, IM immunomodulatory, BL basal-like, MES mesenchymal-like, BLIS basal-like and immune-suppressed

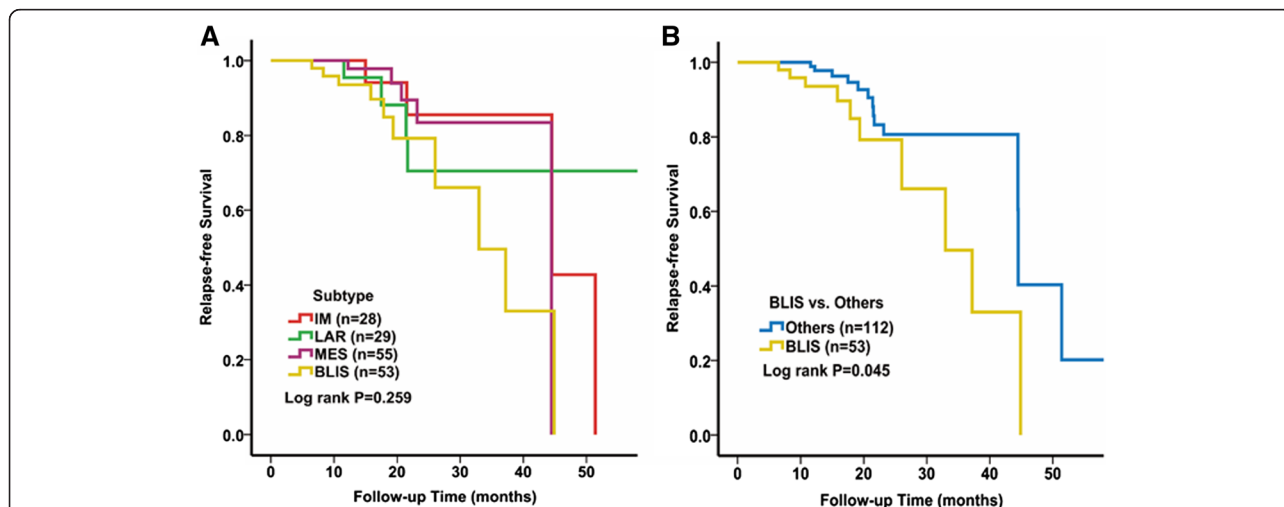
majority; and our subtype BLIS mainly contained the Lehmann/Pietenpol BL1 and M types (Fig. 3).

**Survival analysis of patients in the four subtypes**

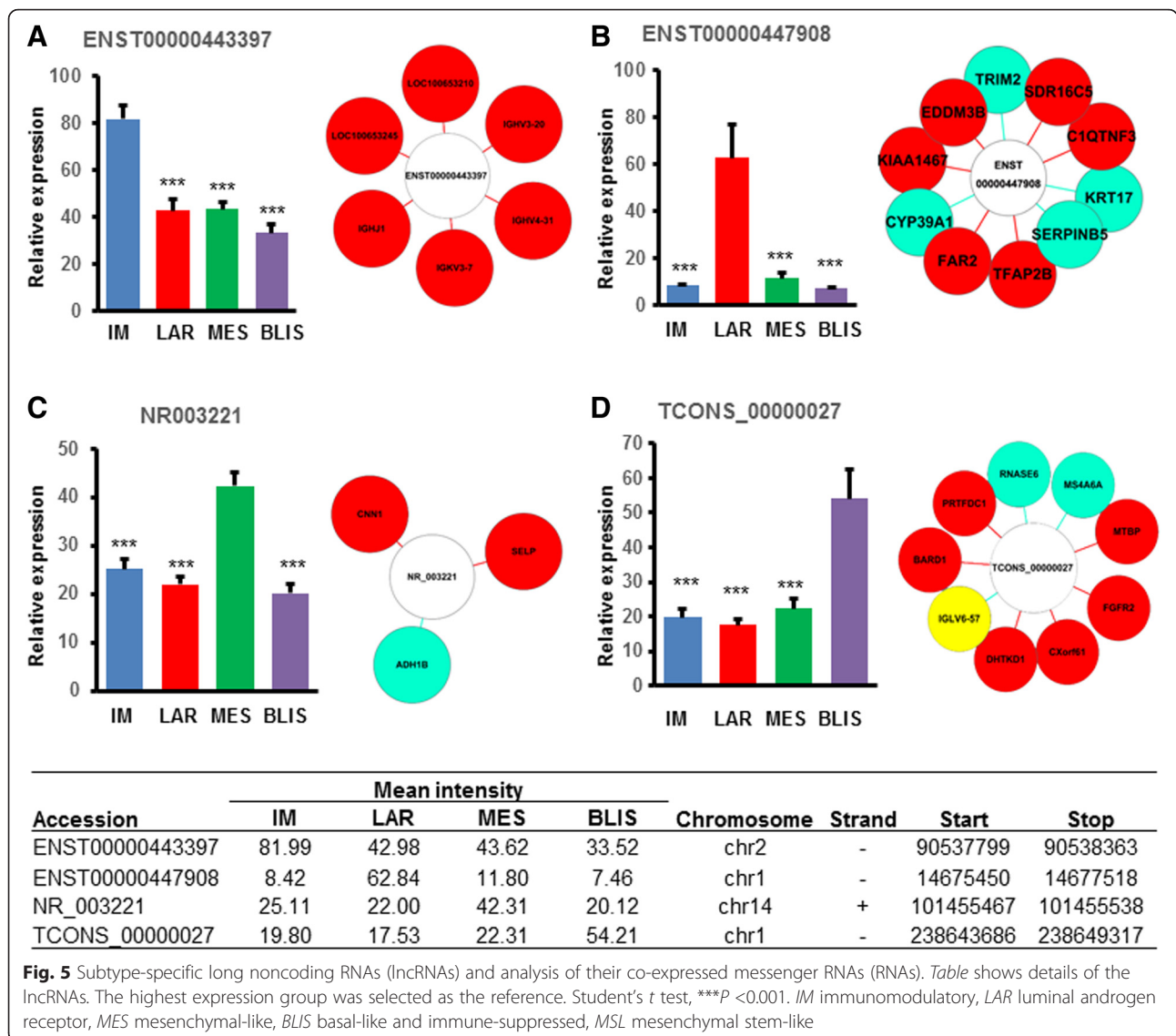
We conducted survival analysis to explore correlations between the four subtypes and RFS. Kaplan–Meier survival analysis showed that there was no significant difference in RFS between the four subtypes (Fig. 4a). However, when we analyzed the data by comparing one subtype with the others, we found that patients in the subtype BLIS experienced worse RFS than the remaining patients with TNBC (Fig. 4b, log rank  $P = 0.045$ ).

**Identifying subtype-specific lncRNAs and their co-expressed mRNAs**

We identified differentially expressed lncRNAs in each subtype by comparing the expression intensity of lncRNAs in one specific subtype with the others. Differentially upregulated lncRNAs are as shown in Fig. 5. In the IM subtype, the most upregulated lncRNA was *ENST00000443397*, which was tightly correlated with five mRNAs (Fig. 5a). LncRNA *ENST00000447908* was highly expressed in the LAR subtype, and ten mRNAs were significantly associated with it (Fig. 5b). In the MES subtype, expression of lncRNA *NR\_003221* was increased, and it was positively related with two mRNAs and negatively associated with one mRNA (Fig. 5c). LncRNA *TCONS\_00000027* was also a novel



**Fig. 4** Kaplan-Meier plot and logrank test compared recurrence-free survival (RFS) in different subtypes according to the Fudan University Shanghai Cancer Center (FUSCC) classification. **a** Difference in RFS among four subtypes. **b** RFS in patients with the basal-like 1 (BL1) subtype compared to other subtypes. IM immunomodulatory, LAR luminal androgen receptor, MES mesenchymal-like, BLIS basal-like and immune-suppressed



lncRNA that was highly expressed in the BLIS subtype; nine mRNAs were significantly correlated with it (Fig. 5d). For these four lncRNAs, we further validated their subtype-specific expression in a cohort of breast cancer cell lines and TNBC samples using quantitative real-time PCR (Additional file 2: Figure S5, S6). On further *in situ* hybridization, we validated that lncRNAs *TCONS\_00000027* were highly expressed in TNBC samples (Additional file 2: Figure S7). Several other subtype-specific lncRNAs and their basic information are listed in Additional file 2: Figures S1-S4.

**Discussion**

In the present study, we established a novel TNBC classification system, the FUSCC classification, by integrating the expression profiles of both mRNAs and lncRNAs. TNBC samples can be clearly classified into four subtypes

according to our system: IM, LAR, MES, and BLIS. Each subtype has its own unique transcriptome profile. Furthermore, we filtrated out several subtype-specific lncRNAs and predicted possible functions of these lncRNAs in TNBC biological processes by analyzing the co-expression network between lncRNAs and mRNAs. To the best of our knowledge, the present study is the first to develop a novel TNBC classification system based on the transcriptome profiles of both mRNAs and lncRNAs in a large TNBC cohort.

Several novel findings were revealed in our in-depth transcriptome analysis. First, considering the expanding roles of lncRNAs in tumorigenesis and disease development, we integrated the expression profiles of both mRNAs and lncRNAs in an attempt to comprehensively understand the heterogeneous nature of TNBC. By clustering TNBC samples into four unique subtypes, the



FUSCC classification is more simplified than the former Lehmann/Pietenpol system, but we could also recognize some overlaps between the two systems. In the Lehmann/Pietenpol classification, TNBC patients were assigned to six different subtypes according to the combined analysis of 14 publically available RNA profiling datasets [18]. However, subsequent study using the Lehmann/Pietenpol system did not readily distinguish BL1 and BL2 tumors [19]. In our present study, tumors with a basal property were classified into only one subtype (BLIS) that incorporated almost all of the BL1 and BL2 subtypes from the Lehmann/Pietenpol classification. The BLIS subtype is associated with genes involved in proliferation and immunosuppression. Moreover, in the survival analysis, we observed a worse survival outcome for this subtype compared with other subtypes. The results are concordant with those of a previous study in which patients with the same property (basal-like immune-suppressed) had the worst outcome among patients with TNBC [30]. Furthermore, almost all of the BLIS tumors were in the group at high risk of relapse according to the TNBC prognostic signature that we developed (unpublished data). Collectively, these results suggest the aggressive nature of BLIS tumors. Thus, if these results are further validated in other larger populations or prospective cohorts, more aggressive treatment should be tailored for this group of patients.

In the study of Reiche [11], differentially expressed lncRNAs were identified with relation to cancer-related protein-coding genes. This suggests a tight connection between lncRNA and mRNA. Through bioinformatics analyses, we identified several subtype-specific lncRNAs that will be functionally investigated in the future. By analyzing co-expression networks, mRNAs that are highly correlated with the subtype-specific lncRNAs were identified. For example, lncRNA *NR\_003221* in the MES subtype is positively correlated with mRNA *CNN1* and *SELP*, but negatively correlated with mRNA *ADH1B*. *SELP* encodes selectin P, which could mediate the interactions between endothelial cells and leukocytes. A study has shown that high selectin P expression is associated with metastasis of small cell lung cancer [31]. Together with chondroitin sulfate proteoglycan 4, selectin P can bind to highly metastatic breast cancer cells and removal of selectin P ligand could reduce metastatic lung colonization [32]. *ADH1B* encodes alcohol dehydrogenase. Decreased expression of *ADH1B* gene has been proved to be associated with disease progression in human colorectal cancer [33]. Taken together, we hypothesize that lncRNA *NR\_003221* may play a role in cancer development by promoting cell metastasis.

Our study has several limitations. First, the new classification has not yet been validated in other cohorts. Due to the limited data on lncRNA expression in TNBC, we did not validate the system in publicly available datasets.

Second, even though GO and pathway analyses were performed, the nature of each subtype was not thoroughly clarified, and in particular, lacked support from functional experiments. Third, the follow-up time of the prospective observational study was relatively short, and may have resulted in the marginal difference in survival (BLIS vs. others). Further updating the follow-up data might help clarify the association between subtypes and survival outcome. Last, compared with other available technology, such as RNAseq, the HTA2.0 cannot identify novel lncRNAs. Therefore, our future work will focus on updating the follow up of the cohort, recruiting independent cohorts to validate the FUSCC classifier and investigating the functions of novel lncRNAs in each subtype.

## Conclusions

We have developed a novel TNBC subtyping system, assigning TNBC patients to four distinct subtypes by integrating both mRNA and lncRNA expression profiles. In addition, we revealed a number of novel subtype-specific lncRNAs that help elucidate the nature of each subtype. Once further validated in a larger population, the subtype system could facilitate individualized treatment of TNBC.

## Additional files

**Additional file 1:** Top gene ontologies and pathways involved in each subtype.

**Additional file 2: Figure S1.** Subtype-specific long noncoding RNA (lncRNAs) in the immunomodulatory subgroup. Figure S2 Subtype-specific lncRNA in the luminal androgen receptor subgroup. Figure S3 Subtype-specific lncRNAs in the mesenchymal-like subgroup. Figure S4 Subtype-specific lncRNAs in the basal-like and immune-suppressed subgroup. Figure S5 Validation of subtype-specific lncRNAs using quantitative real-time PCR in triple-negative breast cancer. Figure S6 Validation of subtype-specific lncRNAs using quantitative real time PCR in breast cancer cell lines. Figure S7 Validation of lncRNAs TCONS\_00000027 in breast cancer tissue microarray using RNA *in situ* hybridization technology. (PPTX 3172 kb)

## Abbreviations

BL1: basal-like-1; BL2: basal-like-2; BLIS: basal-like and immune-suppressed; CDF: empirical cumulative distribution function; ECM: extracellular matrix; ER: estrogen receptor; FUSCC: Fudan University Shanghai Cancer Center; GO: Gene Ontology; HER2: human epidermal growth factor receptor 2; HTA 2.0: Human Transcriptome Array 2.0; KEGG: Kyoto Encyclopedia of Genes and Genomes database; IM: immunomodulatory; LAR: luminal androgen receptor; lncRNA: long noncoding RNA; M: claudin-low-enriched mesenchymal; MES: mesenchymal-like; MSL: mesenchymal stem-like; mRNA: messenger RNA; NCBI: National Center for Biotechnology Information; PR: progesterone receptor; RFS: recurrence-free survival; TGF: transforming growth factor; TNBC: triple-negative breast cancer; UNS: unstable.

## Competing interests

The authors declare that they have no competing interests.

## Authors' contributions

Z-MS was the principal investigator who conceived, coordinated and oversaw the study. YRL coordinated and oversaw the study, performed most of the experiments, was responsible for bioinformatics investigation and wrote the manuscript. YZJ oversaw the study, performed the experiments and

participated in the manuscript writing. KDY was responsible for bioinformatics investigation and validation experiments. XEX, XJ, XH and SH participated in the preparation of the biological samples. WJZ participated in the collection of clinical data and helped to revise the manuscript. JW, GYL and GHD helped gather detailed clinical information for the study and helped to perform the clinical analysis. DQL, XHH and WGH guided the biochemical experiments and helped analyze the experiment data. All authors have participated in writing the manuscript and approved the manuscript. YRL and YZJ contributed equally to this work.

#### Acknowledgements

This work was supported by grants from the Research Project of Fudan University Shanghai Cancer Center (YJ201401), the National Natural Science Foundation of China (81572583, 81502278, 81372848, 81370075); the Municipal Project for Developing Emerging and Frontier Technology in Shanghai Hospitals (SHDC12010116); the Cooperation Project of Conquering Major Diseases in Shanghai Municipality Health System (2013ZYJB0302); the Innovation Team of Ministry of Education (IRT1223); and the Shanghai Key Laboratory of Breast Cancer (12DZ2260100). The funders had no role in the study design, data collection and analysis, decision to publish, or preparation of the manuscript.

#### Author details

<sup>1</sup>Department of Breast Surgery, Fudan University Shanghai Cancer Center, 270 Dong-An Road, Shanghai 200032, P.R. China. <sup>2</sup>Cancer Institute, Fudan University Shanghai Cancer Center, 270 Dong-An Road, Shanghai 200032, P.R. China. <sup>3</sup>Department of Oncology, Shanghai Medical College, Fudan University, 270 Dong-An Road, Shanghai 200032, P.R. China. <sup>4</sup>Institutes of Biomedical Sciences, Fudan University, Shanghai, P.R. China.

Received: 21 May 2015 Accepted: 21 February 2016

Published online: 15 March 2016

#### References

- Chi Y, Huang S, Yuan L, Liu M, Huang N, Zhou S, et al. Role of BC040587 as a predictor of poor outcome in breast cancer. *Cancer Cell Int*. 2014;14(1):123.
- Liu B, Sun L, Liu Q, Gong C, Yao Y, Lv X, et al. A Cytoplasmic NF- $\kappa$ B Interacting long noncoding RNA blocks I $\kappa$ B phosphorylation and suppresses breast cancer metastasis. *Cancer Cell*. 2015;27(3):370–81.
- Shi Y, Li J, Liu Y, Ding J, Fan Y, Tian Y, et al. The long noncoding RNA SPRY4-IT1 increases the proliferation of human breast cancer cells by upregulating ZNF703 expression. *Mol Cancer*. 2015;14(1):51.
- Trimarchi T, Bilal E, Ntziachristos P, Fabbri G, Dalla-Favera R, Tsirogas A, et al. Genome-wide mapping and characterization of Notch-regulated long noncoding RNAs in acute leukemia. *Cell*. 2014;158(3):593–606.
- Wang KC, Chang HY. Molecular mechanisms of long noncoding RNAs. *Mol Cell*. 2011;43(6):904–14.
- Prensner JR, Chinnaiyan AM. The emergence of lncRNAs in cancer biology. *Cancer Discov*. 2011;1(5):391–407.
- Prensner JR, Iyer MK, Sahu A, Asangani IA, Cao Q, Patel L, et al. The long noncoding RNA SchLAP1 promotes aggressive prostate cancer and antagonizes the SWI/SNF complex. *Nat Genet*. 2013;45(11):1392–8.
- Yuan JH, Yang F, Wang F, Ma JZ, Guo YJ, Tao QF, et al. A long noncoding RNA activated by TGF- $\beta$  promotes the invasion-metastasis cascade in hepatocellular carcinoma. *Cancer Cell*. 2014;25(5):666–81.
- Pandey GK, Mitra S, Subhash S, Hertwig F, Kanduri M, Mishra K, et al. The risk-associated long noncoding RNA NBAT-1 controls neuroblastoma progression by regulating cell proliferation and neuronal differentiation. *Cancer Cell*. 2014;26(5):722–37.
- Hu X, Feng Y, Zhang D, Zhao SD, Hu Z, Greshock J, et al. A functional genomic approach identifies FAL1 as an oncogenic long noncoding RNA that associates with BMI1 and represses p21 expression in cancer. *Cancer Cell*. 2014;26(3):344–57.
- Reiche K, Kasack K, Schreiber S, Lüders T, Due EU, Naume B, et al. Long non-coding RNAs differentially expressed between normal versus primary breast tumor tissues disclose converse changes to breast cancer-related protein-coding genes. *PLoS One*. 2014;9(9):e106076.
- Xing Z, Lin A, Li C, Liang K, Wang S, Liu Y, et al. lncRNA directs cooperative epigenetic regulation downstream of chemokine signals. *Cell*. 2014;159(5):1110–25.
- Gupta RA, Shah N, Wang KC, Kim J, Horlings HM, Wong DJ, et al. Long non-coding RNA HOTAIR reprograms chromatin state to promote cancer metastasis. *Nature*. 2010;464(7291):1071–6.
- Dent R, Trudeau M, Pritchard KI, Hanna WM, Kahn HK, Sawka CA, et al. Triple-negative breast cancer: clinical features and patterns of recurrence. *Clin Cancer Res*. 2007;13(15):4429–34.
- Foulkes WD, Smith IE, Reis-Filho JS. Triple-negative breast cancer. *N Engl J Med*. 2010;363(20):1938–48.
- Yin WJ, Lu JS, Di GH, Lin YP, Zhou LH, Liu GY, Wu J, Shen KW, Han QX, Shen ZZ et al. Clinicopathological features of the triple-negative tumors in Chinese breast cancer patients. *Breast cancer research and treatment* 2009; 115(2):325–333.
- Venkitaraman R. Triple-negative/basal-like breast cancer: clinical, pathologic and molecular features. *Expert Rev Anticancer Ther*. 2010;10(2):199–207.
- Lehmann BD, Bauer JA, Chen X, Sanders ME, Chakravarthy AB, Shtyr Y, et al. Identification of human triple-negative breast cancer subtypes and preclinical models for selection of targeted therapies. *J Clin Invest*. 2011;121(7):2750–67.
- Prat A, Adamo B, Cheang MC, Anders CK, Carey LA, Perou CM. Molecular characterization of basal-like and non-basal-like triple-negative breast cancer. *Oncologist*. 2013;18(2):123–33.
- Wolff AC, Hammond ME, Schwartz JN, Hagerty KL, Allred DC, Cote RJ, et al. American Society of Clinical Oncology/College of American Pathologists guideline recommendations for human epidermal growth factor receptor 2 testing in breast cancer. *J Clin Oncol*. 2007;25(1):118–45.
- Chen S, Jiang YZ, Huang L, Zhou RJ, Yu KD, Liu Y, et al. The residual tumor autophagy marker LC3B serves as a prognostic marker in local advanced breast cancer after neoadjuvant chemotherapy. *Clin Cancer Res*. 2013;19(24):6853–62.
- Wang P, Xue Y, Han Y, Lin L, Wu C, Xu S, et al. The STAT3-binding long noncoding RNA lnc-DC controls human dendritic cell differentiation. *Science*. 2014;344(6181):310–3.
- Chen X, Li J, Gray WH, Lehmann BD, Bauer JA, Shtyr Y, et al. TNBCtype: A subtyping tool for triple-negative breast cancer. *Cancer informatics*. 2012;11:147–56.
- Blake JA, Harris MA. The Gene Ontology (GO) project: structured vocabularies for molecular biology and their application to genome and expression analysis. *Curr Protoc Bioinformatics*. 2008;Chapter 7:Unit 7.2. doi:10.1002/0471250953.bi0702s23.
- Gene Ontology C. The Gene Ontology (GO) project in 2006. *Nucleic Acids Res*. 2006;34(Database issue):D322–6.
- Ashburner M, Ball CA, Blake JA, Botstein D, Butler H, Cherry JM, et al. Gene ontology: tool for the unification of biology. The Gene Ontology Consortium. *Nat Genet*. 2000;25(1):25–9.
- Kanehisa M, Goto S, Kawashima S, Okuno Y, Hattori M. The KEGG resource for deciphering the genome. *Nucleic Acids Res*. 2004;32(Database issue):D277–80.
- Pujana MA, Han JD, Starita LM, Stevens KN, Tewari M, Ahn JS, et al. Network modeling links breast cancer susceptibility and centrosome dysfunction. *Nat Genet*. 2007;39(11):1338–49.
- Shannon P, Markiel A, Ozier O, Baliga NS, Wang JT, Ramage D, et al. Cytoscape: a software environment for integrated models of biomolecular interaction networks. *Genome Res*. 2003;13(11):2498–504.
- Burstein MD, Tsimelzon A, Poage GM, Covington KR, Contreras A, Fuqua S, et al. Comprehensive genomic analysis identifies novel subtypes and targets of triple-negative breast cancer. *Clin Cancer Res*. 2014;21(7):1688–98.
- Heidemann F, Schildt A, Schmid K, Bruns OT, Riecken K, Jung C, et al. Selectins mediate small cell lung cancer systemic metastasis. *PLoS One*. 2014;9(4):e92327.
- Cooney CA, Jousheghany F, Yao-Borengasser A, Phanavanh B, Gomes T, Kieber-Emmons AM, et al. Chondroitin sulfates play a major role in breast cancer metastasis: a role for CSPG4 and CHST11 gene expression in forming surface P-selectin ligands in aggressive breast cancer cells. *Breast Cancer Res*. 2011;13(3):R58.
- Kropotova ES, Zinovieva OL, Zyryanova AF, Dybova VI, Prasolov VS, Beresten SF, et al. Altered expression of multiple genes involved in retinoic acid biosynthesis in human colorectal cancer. *Pathol Oncol Res*. 2014;20(3):707–17.