



# Soft colloids for complex interfacial assemblies

Fabrizio Camerin<sup>a,b,c,1</sup> and Emanuela Zaccarelli<sup>a,b,1</sup>

The design of complex materials and the formation of specific patterns often arise from the properties of the individual building blocks. In this respect, colloidal systems offer a unique opportunity because nowadays, they can be synthesized in the laboratory with many different shapes and features. Hence, an appropriate choice of the particle characteristics makes it possible to generate macroscopic structures with desired properties. The versatility of colloids can also be explored in two dimensions using liquid–liquid or air–liquid interfaces as privileged substrates where they can adsorb and self-assemble. Other than being innovative model systems for fundamental studies, the great interest of the scientific community is also technological and applicative since colloidal-scale surface patterns are very promising, for example, in photonics or biosensing. In a recent study published in PNAS, Menath et al. (1) combine these elements and exploit core–shell colloids, consisting of a silica core and a soft, noncross-linked polymer shell, to make an important step forward in controlling the assembly of complex structures at an interface.

One of the main reasons to study colloidal assemblies at interfaces is related to the possibility of stabilizing emulsions, in which droplets of a liquid phase are in contact with a second immiscible fluid. In this context, it is worth mentioning Pickering emulsions in which rigid particles coat the interface between the two fluids, making the system kinetically stable (2). Soft colloids offer an extra advantage (3): being deformable objects, they can spread and flatten at the interface. Their behavior is thus dictated by the combination of the tendency to minimize surface tension, which typically leads to an increase in particle size, and of the elasticity of the object, which counterbalances the previous action. Precisely for these reasons, the conformation that a soft colloid acquires at the interface can be radically different from the one arising in bulk. This has recently started a series of investigations on soft colloids aimed to understand not only the stability

of emulsions but also their effective interactions and the structures they form once adsorbed at an interface (4, 5).

In this respect, the case of microgels is emblematic and here serves as a significant case study, which we will now illustrate for a better understanding of the relevance of the work by Menath et al. (1). Microgels are colloidal-scale polymer networks that are typically inhomogeneous, being constituted by an inner, more compact core and an outer, fluffier corona. One of the first studies about these soft and deformable particles at the interface dates back to about a decade ago (6). This pioneering work found that the morphology of an individual microgel at a flat water–oil interface resembles that of a “fried egg,” as also recently confirmed by computer simulations of a realistic microgel network (7). In fact, the corona, corresponding to the most flexible and less cross-linked portion of the particle, is able to greatly extend at the interface, while the denser core protrudes toward the preferred aqueous phase. This conformation induces a characteristic collective behavior, which includes, for instance, an isostructural solid–solid transition between two crystalline phases with the same hexagonal symmetry but different lattice constants (8, 9). The intimate link that exists between phase behavior and the structure of a single microgel is made particularly evident by this phenomenon. Indeed, following the core–corona structure, upon reaching a certain level of compression, some cross-linked shells may collapse and give rise to a conformation in which core–core contacts are also present. Other studies pointed out the crucial effect of capillary interactions, particularly for large microgels (10) as well as the formation of disordered and glassy states (4, 11). However, it appears that the typical crystalline arrangement for intermediate compression of microgel particles is limited to the hexagonal one. Typical atomic force microscopy (AFM) images illustrating this behavior are shown in Fig. 1 (12). These considerations also apply to similar colloidal particles for

<sup>a</sup>Italian National Research Council - Institute for Complex Systems (CNR-ISC), Sapienza University of Rome, 00185 Rome, Italy; <sup>b</sup>Department of Physics, Sapienza University of Rome, 00185 Rome, Italy; and <sup>c</sup>Soft Condensed Matter, Debye Institute for Nanomaterials Science, Utrecht University, 3584 CC Utrecht, The Netherlands

Author contributions: F.C. and E.Z. wrote the paper.

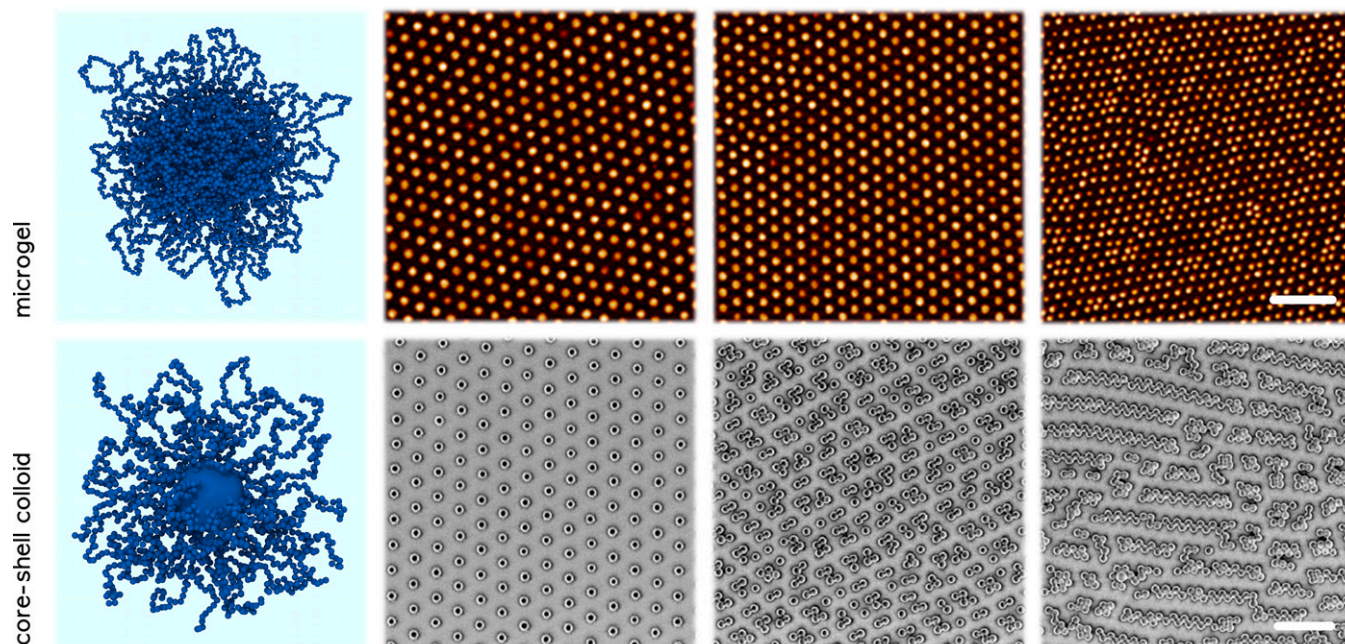
The authors declare no competing interest.

This article is distributed under [Creative Commons Attribution-NonCommercial-NoDerivatives License 4.0 \(CC BY-NC-ND\)](https://creativecommons.org/licenses/by-nc-nd/4.0/).

See companion article, “Defined core–shell particles as the key to complex interfacial self-assembly,” [10.1073/pnas.2113394118](https://doi.org/10.1073/pnas.2113394118).

<sup>1</sup>To whom correspondence may be addressed. Email: [fabrizio.camerin@gmail.com](mailto:fabrizio.camerin@gmail.com) or [emanuela.zaccarelli@cnr.it](mailto:emanuela.zaccarelli@cnr.it).

Published February 4, 2022.



**Fig. 1.** Collective behavior of microgels and core-shell colloids at an interface. (Left) Simulation snapshots reporting the top view of a representative microgel (Upper) and of a hard core-soft noncross-linked shell colloid (Lower) adsorbed at an interface. (Right) Experimental images for microgels (from AFM) (12) and core-shell colloids (from scanning electron microscopy) (1). Particles are deposited onto a solid substrate after assembling at an interface for increasing surface pressures (from left to right). While for standard microgels, regular hexagonal phases arise, in the case of core-shell colloids unconventional phases with dimers, trimers, tetramers, and zigzag and braided chains are retrieved. (Scale bars: 2  $\mu\text{m}$  for microgels and core-shell colloids.) Adapted with permission from ref. 12 (Copyright 2016, American Chemical Society) and with permission from ref. 1.

which a cross-linked polymer shell surrounds a core of some kind, either soft or hard (13, 14).

In an effort to achieve structures other than hexagonal, different experimental strategies have been attempted. For instance, the use of a double-deposition technique has provided very interesting results and the formation of unconventional structures. In their study, Grillo et al. (5) described how a first (hexagonal) layer of colloids deposited at the interface acts as a template for a second layer of particles that are then forced to rearrange, forming an overall single layer. In this way, the authors demonstrated that by varying the packing fractions of the two monolayers, it is possible to achieve low-coordinated arrangements as well as structures of higher complexity, such as interlocking-S or herringbone superlattices. Similarly, Volk et al. (15) showed the formation of Moiré and honeycomb lattices from microgels with a rigid core and a soft polymeric shell.

Altogether this evidence seems to support the idea that when starting from building blocks with a substantially spherical shape, it is not possible to obtain complex structures from spontaneous assembly. Indeed, the usual approach to direct the assembly toward a certain type of structure is to act on the shape of the colloid so that by changing interaction potential and packing ability, different structures are generated. It is right in this context that the work of Menath et al. (1) is nested. Their idea is rather different: the authors, in fact, propose to modify the inner structure of the particles rather than its overall shape once adsorbed. The theoretical foundation for this possibility was laid by Jagla (16) about 20 y ago, who suggested that complex nonhexagonal phases could be achieved for a two-dimensional system with two well-separated length scales. In this way, the outer shells are allowed to shrink, so that other particles can get in core-core contact after the exerted pressure is sufficiently high. This requirement is actually quite general and does not preclude the

formation of conventional hexagonal phases. Indeed, recalling the behavior observed in standard microgels, the presence of two length scales given by the core and the corona leads at most to an isostructural transition between two hexagonal crystalline phases. The authors of this study in PNAS, therefore, point out that more stringent requirements are necessary to advance further, which translates into specific features that the outer shell should retain.

First of all, based on theoretical considerations, the repulsive force exerted by the polymer chains should give rise to a non-convex shape of the colloid-colloid interaction potential. Another important aspect is that each shell should behave independently of the others. The advantage in this case is that the system can minimize its energy by letting compressions occur in a preferred direction without influencing all the other neighboring particles to behave in the same manner, thus allowing anisotropic structures to form. The major challenge now lies in synthesizing a system that actually meets these conditions. Although the characteristics of the shell may recall systems such as ultralow-cross-linked (17) or hollow microgels (18), these do not represent suitable systems to reproduce this behavior due to the lack of a true internal core. Menath et al. (1) propose to use a hard core-soft shell system with clearly separated length scales in order to satisfy the first requirement posed by Jagla (16). In addition, the authors use an advanced radical polymerization scheme to functionalize the core via noncross-linked polymer chains, being able to obtain shells of highly controlled thickness. In this way, they obtain particles that, once absorbed at the interface, are able to greatly extend, increasing their size by more than 60% with respect to their bulk counterpart. As compared with the corona that is typically present in standard microgels, there are some aspects that make this system more eligible to behave as predicted theoretically by Jagla (16). On one hand, the low-density shell formed by the grafted

polymers allows for maintaining an almost complete confinement at the interface even at modest compressions; on the other hand, it avoids a marked increase in the overlap of the chains that would lead to a convex shape of the interaction potential. Moreover, the fact that the shell is composed of noncross-linked polymer chains allows compression of each colloid to be independent of that of its neighbors, thereby satisfying the second aspect that was pointed out in the Jagla conjecture.

By synthesizing the system in this way, it was indeed possible to observe phases other than hexagonal at intermediate compressions of the core-shell colloids at the interface. In fact, a series of cluster phases was observed, with lattices formed first by dimers, then by trimers, and finally by tetramers. These, in turn, give rise to more complex phases, such as zigzag and braided chains, as shown in Fig. 1. At the maximum possible compression at the interface, larger clusters are formed in which a great part of the particles are in contact through the cores. The authors then corroborate these observations with Monte Carlo simulations, which indicated that a nonconvex form of the repulsive interaction potential is needed in order to qualitatively reproduce the phases observed

experimentally. Hence, we can infer that the peculiarities of the shell are critical for inducing an inversion of the concavity of the effective potential and the related collective behavior for such soft colloids. It would be desirable to find a direct confirmation of this unusual shape of the potential by appropriate monomer-resolved simulations.

The article by Menath et al. (1), therefore, provides a fundamental study highlighting the importance of particle softness for the design of colloidal systems that, once confined at an interface, are able to assemble in two dimensions into a variety of different structures. Further strategies will need to be discovered in the near future to go beyond the cluster and zigzag phases observed in this article toward the self-assembly of more complex lattices. To this aim, a combined effort of advanced synthesis, modeling, and state-of-the-art simulations and experiments should be put forward to achieve the desired control of the target structures.

### Acknowledgments

Our research has been supported by the European Research Council through Consolidator Grant 681597 (MIMIC).

- 1 J. Menath et al., Defined core-shell particles as the key to complex interfacial self-assembly. *Proc. Natl. Acad. Sci. U.S.A.* **118**, e2113394118 (2021).
- 2 R. Aveyard, B. P. Binks, J. H. Clint, Emulsions stabilised solely by colloidal particles. *Adv. Colloid Interface Sci.* **100**, 503–546 (2003).
- 3 R. W. Style, L. Isa, E. R. Dufresne, Adsorption of soft particles at fluid interfaces. *Soft Matter* **11**, 7412–7419 (2015).
- 4 F. Camerin et al., Microgels at interfaces behave as 2D elastic particles featuring reentrant dynamics. *Phys. Rev. X* **10**, 031012 (2020).
- 5 F. Grillo, M. A. Fernandez-Rodriguez, M. N. Antonopoulou, D. Gerber, L. Isa, Self-templating assembly of soft microparticles into complex tessellations. *Nature* **582**, 219–224 (2020).
- 6 K. Geisel, L. Isa, W. Richtering, Unraveling the 3D localization and deformation of responsive microgels at oil/water interfaces: A step forward in understanding soft emulsion stabilizers. *Langmuir* **28**, 15770–15776 (2012).
- 7 F. Camerin et al., Microgels adsorbed at liquid-liquid interfaces: A joint numerical and experimental study. *ACS Nano* **13**, 4548–4559 (2019).
- 8 M. Rey et al., Isostructural solid-solid phase transition in monolayers of soft core-shell particles at fluid interfaces: Structure and mechanics. *Soft Matter* **12**, 3545–3557 (2016).
- 9 S. Ciarella et al., Soft particles at liquid interfaces: From molecular particle architecture to collective phase behavior. *Langmuir* **37**, 5364–5375 (2021).
- 10 L. Scheidegger et al., Compression and deposition of microgel monolayers from fluid interfaces: Particle size effects on interface microstructure and nanolithography. *Phys. Chem. Chem. Phys.* **19**, 8671–8680 (2017).
- 11 S. Huang, K. Gawlitza, R. von Klitzing, W. Steffen, G. K. Auernhammer, Structure and rheology of microgel monolayers at the water/oil interface. *Macromolecules* **50**, 3680–3689 (2017).
- 12 B. M. Rey et al., Fully tunable silicon nanowire arrays fabricated by soft nanoparticle templating. *Nano Lett.* **16**, 157–163 (2016).
- 13 N. Vogel et al., Ordered arrays of gold nanostructures from interfacially assembled Au@PNIPAM hybrid nanoparticles. *Langmuir* **28**, 8985–8993 (2012).
- 14 J. S. J. Tang et al., Surface patterning with SiO<sub>2</sub>@PNIPAm core-shell particles. *ACS Omega* **3**, 12089–12098 (2018).
- 15 K. Volk, F. Deißbeck, S. Mandal, H. Löwen, M. Karg, Moiré and honeycomb lattices through self-assembly of hard-core/soft-shell microgels: Experiment and simulation. *Phys. Chem. Chem. Phys.* **21**, 19153–19162 (2019).
- 16 E. Jagla, Phase behavior of a system of particles with core collapse. *Phys. Rev. E* **58**, 1478 (1998).
- 17 A. Scotti et al., Exploring the colloid-to-polymer transition for ultra-low crosslinked microgels from three to two dimensions. *Nat. Commun.* **10**, 1418 (2019).
- 18 J. Vialetto et al., Effect of internal architecture on the assembly of soft particles at fluid interfaces. *ACS Nano* **15**, 13105–13117 (2021).