

West Africa - A Safe Haven for Frogs? A Sub-Continental Assessment of the Chytrid Fungus (*Batrachochytrium dendrobatidis*)

Johannes Penner^{1*}, Gilbert B. Adum², Matthew T. McElroy³, Thomas Doherty-Bone^{4,5}, Mareike Hirschfeld¹, Laura Sandberger¹, Ché Weldon⁶, Andrew A. Cunningham⁵, Torsten Ohst^{1,7}, Emma Wombwell⁵, Daniel M. Portik⁸, Duncan Reid³, Annika Hillers⁹, Caleb Ofori-Boateng^{2,10}, William Oduro², Jörg Plötner¹, Annemarie Ohler¹¹, Adam D. Leaché³, Mark-Oliver Rödel¹

1 Museum für Naturkunde, Leibniz Institute for Research on Evolution and Biodiversity, Berlin, Germany, **2** Department of Wildlife and Range Management, Faculty of Renewable Natural Resources, CANR, KNUST, Kumasi, Ghana, **3** Department of Biology and Burke Museum, University of Washington, Seattle, Washington, United States of America, **4** Department of Life Sciences, Natural History Museum, London, United Kingdom, **5** Institute of Zoology, London, United Kingdom, **6** Unit for Environmental Research, North-West University, Potchefstroom, South Africa, **7** Charité - University Medicine Berlin, Institute of Microbiology and Hygiene, Berlin, Germany, **8** Museum of Vertebrate Zoology and Department of Integrative Biology, University of California, Berkeley, California, United States of America, **9** Royal Society for the Protection of Birds, Across the River - A Transboundary Peace Park for Sierra Leone and Liberia, Kenema, Sierra Leone, **10** Forestry Research Institute of Ghana, Fumesua, Kumasi, Ghana, **11** Muséum National d'Histoire Naturelle, Département Systématique et Evolution, Origine, Structure et Evolution de la Biodiversité, Paris, France

Abstract

A putative driver of global amphibian decline is the panzootic chytrid fungus *Batrachochytrium dendrobatidis* (*Bd*). While *Bd* has been documented across continental Africa, its distribution in West Africa remains ambiguous. We tested 793 West African amphibians (one caecilian and 61 anuran species) for the presence of *Bd*. The samples originated from seven West African countries - Bénin, Burkina Faso, Côte d'Ivoire, Ghana, Guinea, Liberia, Sierra Leone - and were collected from a variety of habitats, ranging from lowland rainforests to montane forests, montane grasslands to humid and dry lowland savannahs. The species investigated comprised various life-history strategies, but we focused particularly on aquatic and riparian species. We used diagnostic PCR to screen 656 specimen swabs and histology to analyse 137 specimen toe tips. All samples tested negative for *Bd*, including a widespread habitat generalist *Hoplobatrachus occipitalis* which is intensively traded on the West African food market and thus could be a potential dispersal agent for *Bd*. Continental fine-grained (30 arc seconds) environmental niche models suggest that *Bd* should have a broad distribution across West Africa that includes most of the regions and habitats that we surveyed. The surprising apparent absence of *Bd* in West Africa indicates that the Dahomey Gap may have acted as a natural barrier. Herein we highlight the importance of this *Bd*-free region of the African continent - especially for the long-term conservation of several threatened species depending on fast flowing forest streams (*Conraua alleni* ("Vulnerable") and *Petropedetes natator* ("Near Threatened")) as well as the "Critically Endangered" viviparous toad endemic to the montane grasslands of Mount Nimba (*Nimbaphrynoides occidentalis*).

Citation: Penner J, Adum GB, McElroy MT, Doherty-Bone T, Hirschfeld M, et al. (2013) West Africa - A Safe Haven for Frogs? A Sub-Continental Assessment of the Chytrid Fungus (*Batrachochytrium dendrobatidis*). PLoS ONE 8(2): e56236. doi:10.1371/journal.pone.0056236

Editor: Matthew (Mat) Charles Fisher, Imperial College Faculty of Medicine, United Kingdom

Received: June 6, 2012; **Accepted:** January 11, 2013; **Published:** February 13, 2013

Copyright: © 2013 Penner et al. This is an open-access article distributed under the terms of the Creative Commons Attribution License, which permits unrestricted use, distribution, and reproduction in any medium, provided the original author and source are credited.

Funding: Fieldwork in Benin, Burkina Faso and Côte d'Ivoire was funded by the German Ministry for Education and Research (BMBF) through the BIOTA-West project (01LC0617J). In Ghana, fieldwork for GBA, COB and WO was supported by Defra's Darwin Initiative/ZSL's Wildlife Wood Project and the Rufford Small Grants Foundation respectively. Analyses of samples in Berlin were conducted within a project financed by the German Science Foundation (DFG PL 213/6-1). The authors further thank the DFG (VE 183/4-1, RO 3064/1-2), the Rapid Assessment Program and Critical Ecosystem Partnership Fund of Conservation International, the World Wide Fund for Nature and BirdLife International for additional funding. The funders had no role in study design, data collection and analysis, decision to publish, or preparation of the manuscript.

Competing Interests: The authors have declared that no competing interests exist.

* E-mail: johannes.penner@mfn-berlin.de

Introduction

Amphibian populations are declining in many regions of the world [1]. This is due to a number of causes. Besides the main contributors, like destruction, alteration and fragmentation of habitats, an often suggested cause is a fungal pathogen of the order Chytridiales (*Batrachochytrium dendrobatidis* Longcore et al., 1999 - hereafter referred to as *Bd*) which induces the disease chytridiomycosis. The link between declining populations and *Bd* has been subject to a number of reviews [2,3,4,5,6,7,8]. So far it has been responsible for declines in Australia [9,10,11], New Zealand [12],

Central America [13,14,15,16,17,18], North America [19,20,21] and Europe [22]. *Bd* has also been detected in many other regions (see [23] for the most recent worldwide compilation), but not associated with declines.

Currently African records are widespread in southern and eastern Africa, including eastern parts of the Democratic Republic of Congo. These are complemented by very recent additions from Nigeria [24,25,26], Cameroon [27,28] and Gabon [29] (Fig. 1). So far no information has been reported about the pathogen's presence in West Africa. In addition to investigating the pathogen's presence with molecular or histological methods, we

infer the likelihood of *Bd* occurrences using environmental niche modelling (ENM). ENM models the Grinnellian niche measured by scenopoetic variables [sensu 30]. This tool has been shown to contribute significantly to our understanding of current species distributions [e.g. 30,31,32] and has already been used to model the distribution of pathogens, including that of *Bd* [e.g. 33,34,35,36,37,38,39,40]. Potential distributions predicted by the models may then guide future surveys aimed at detecting the focal organism [e.g. 41,42] and preventive measures.

Herein, we compare extensive field surveys for *Bd* based on samples from seven West African countries with results of detailed African continental ENMs, which include the most recent *Bd* positive records. Our findings are discussed with a special focus on common species and on species which are potentially highly threatened by the fungus because of their high niche overlap with *Bd*.

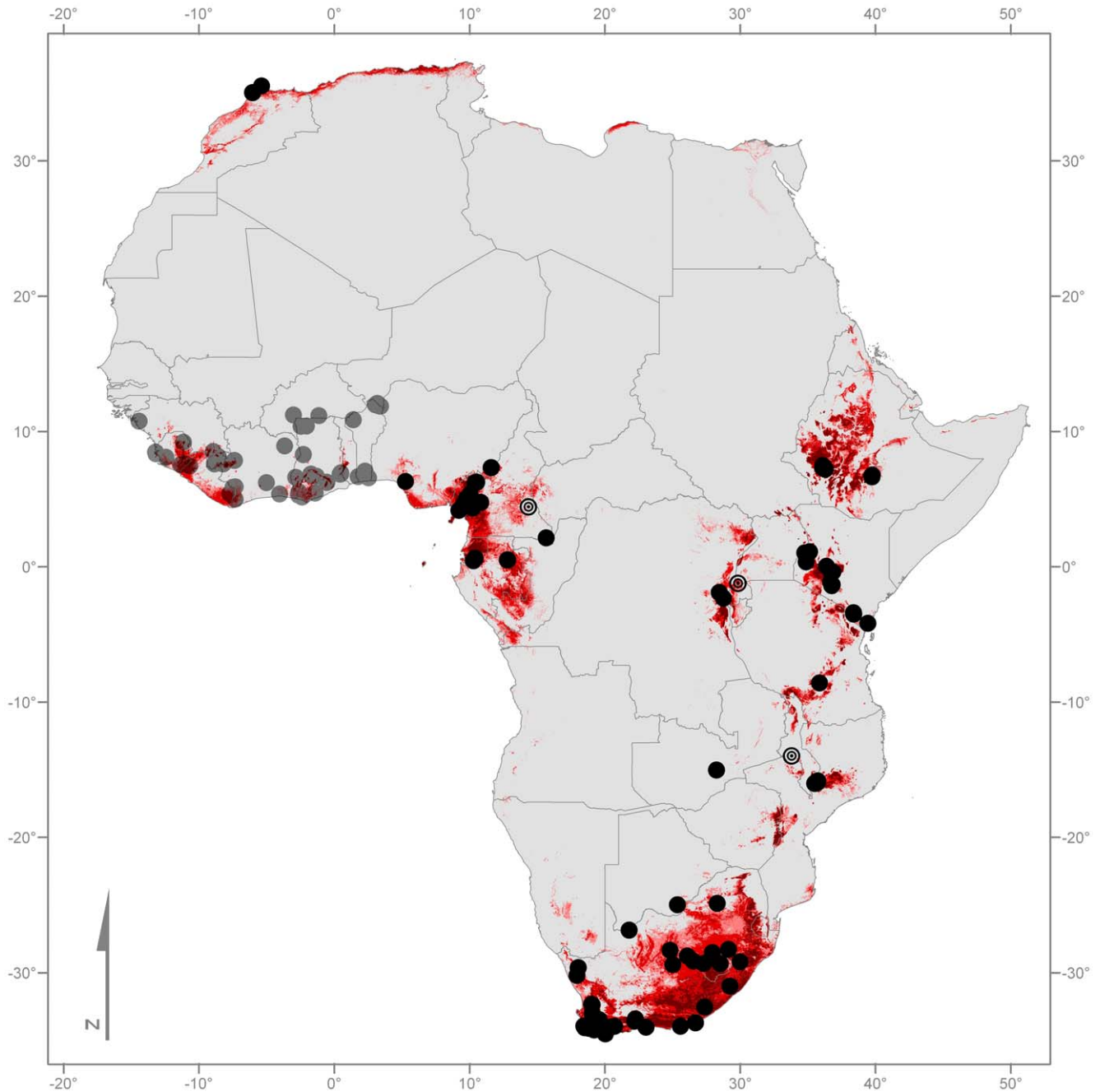


Figure 1. Map of confirmed records of *Bd* on the African continent (black dots). Grey transparent dots represent the West African localities with negative *Bd* records. The hollow black circles indicate *Bd* positive localities [87] which were not used for modelling. The three red colours represent the geographical extent of three different models, predicting the potential distribution of *Bd*. Modelling is based on the conditions of sites with confirmed presence of the pathogen (light red = maximum; red = mean; dark red = minimum; for niche parameters see Table 2). doi:10.1371/journal.pone.0056236.g001

Materials and Methods

Ethics Statement

All work complies with the guidelines for the use of live amphibians and reptiles in field research compiled by the American Society of Ichthyologists and Herpetologists (ASIH), The Herpetologists' League (HL) and the Society for the Study of Amphibians and Reptiles (SSAR). For ethical issues concerning the toe clips we refer to [43], we followed recommendations therein.

Permits were issued by the respective companies, institutions, ministries as well as government bodies: Bénin - Faculté des Sciences Agronomiques, Département d'Aménagement et de Gestion de l'Environnement, Laboratoire d'Ecologie Appliquée, Université d'Abomey-Calavi on behalf of the Centre National de Gestion des Réserves de Faune and the Ministère de l'Environnement et de la Protection de la Nature; Burkina Faso - Unité de Formation et de Recherche en Sciences de la Vie et de la Terre, Département de Biologie et Physiologie Végétales, Laboratoire de Biologie et Ecologie Végétales, Université de Ouagadougou on behalf of the National Centre of Scientific and Technology Research of Burkina Faso; Côte d'Ivoire - Ministère de l'Environnement et du Cadre de Vie, Direction de la Protection de la Nature; Ministère de l'Enseignement Supérieur et de la Recherche Scientifique, Direction de la Recherche; Ministère de la Construction et de l'Environnement, Direction de la Protection de la Nature; Ministère de l'environnement et de la Forêt, Direction de la Protection de la Nature; Société de Développement des Forêts; Ghana - Wildlife Commission of the Forestry Commission of Ghana; Guinea - Ministère de l'Agriculture, de l'Élevage, de l'Environnement et des Eaux et Forêts; Ministère de l'Éducation Nationale et de la Recherche Scientifique, Direction Nationale de la Recherche Scientifique et Technologique; Centre de Gestion de l'Environnement du Nimba-Simandou; Projet des Nations Unies de Développement; Comités Villageois de Surveillance; Ministère du Développement Durable et de l'Environnement, Direction Nationale des Forêts et Faune; Société des Mines de Fer de Guinée; Liberia - Forestry Development Authority, Office of the DMD/Forest Conservation; Arcelor-Mittal; Sierra Leone - Ministry Agriculture, Forestry and Food Security, Forests Conservation and Wildlife Unit, Wildlife Conservation Forestry Division.

The "Bundesamt für Naturschutz", Bonn issued CITES import permits (*Nimbaphrynoides o. occidentalis*; E-3117/07 and E-4074/08; *Nimbaphrynoides o. liberiensis*; E-4509/07), the "Le Directeur Nationale de la Protection de la Nature" (2007/00314) and "L'organe de Gestion CITES Guinée" (2008/0049) in Guinea (*Nimbaphrynoides o. occidentalis*) and the "Forestry Development Authority" in Liberia (01, *Nimbaphrynoides o. liberiensis*) the respective CITES export permits.

Sampling techniques

Anurans were detected via visual, acoustic or opportunistic searches during the rainy seasons 1993, 1995, 2001 to 2005 and 2009 to 2011. Terrestrial and arboreal species were captured by hand and aquatic species, notably from the family Pipidae, by net. Digging was performed to sample fossorial species such as caecilians. Overall we screened 793 amphibians from 62 species (see Appendix S1 & S2) which originated from 64 sites throughout the region (Table 1) as well as live individuals destined for export at Accra airport, Ghana (Figs. 1, 2a & b).

We used two methods: (i) epithelial swabbing and (ii) histology of phalanges to sample for *Bd* [44,45]. Cotton swabs were utilised to brush the *Bd* sensitive areas of each individual live frog including

the ventral surface of each thigh, hind foot and pelvis. Swabs were either placed in 95% ethanol or sprayed with ethanol and stored dry or stored dry directly and kept away from heat [46]. Toe clips were obtained from preserved adult frogs. A piece of dorsal skin was cut one third from the anterior tip of the body and stored in ethanol from preserved caecilians. Toe and skin samples were fixed and stored in 95% ethanol. The samples were analysed at the Museum für Naturkunde, Berlin (MfN; 78 swabs), the North-West University, Potchefstroom (NWU; 105 swabs; 137 toe tips for histology), the University of Washington (UW; 103 swabs) and the Institute of Zoology, London (IoZ; 372 swabs).

Voucher specimens and preserved individuals were euthanized (using either MS-222 or chlorobutanol), preserved in 75% ethanol and are deposited at MfN (134 specimens) or the Burke Museum of Natural History and Culture at UW (103 specimens).

Laboratory techniques

DNA was extracted with DNeasy extraction kits (Qiagen) following manufacturers protocol. DNA extractions were stored at -80°C (MfN, NWU, IoZ) or 4°C (UW) prior to analysis. At all laboratories, standards of known zoospore concentrations (100, 10, 1 and 0.1 zoospore genomic equivalents (IoZ, NWU, UW)) or ITS copies (169 copies per zoospore (MfN)) and a negative control were used in each diagnostic assay.

At MfN, NWU and IoZ, DNA was analysed using *Bd*-specific primers (ITS-1/5.8-S) and following the RT-qPCR protocol of Boyle *et al.* [47]. At IoZ, bovine serum albumin (BSA) was included in the Taqman mastermix to minimise inhibition of the PCR [48]. The PCR profile was: 5 min at 96°C followed by 50 cycles of 10 s at 96°C and 1 min at 60°C . At all laboratories, a positive result consisted of a clearly sigmoid curve in duplicate samples.

At UW, DNA was analysed by conventional PCR [49] and visualised on a 1.5% agarose gel. To verify that DNA extractions were successful, frog 16 s rRNA (*16S*) was amplified for each sample using standard amphibian primers [50]. As an additional positive control, the universal fungus primers *ITS-4/ITS-5* [51] were used to amplify DNA from various (non-*Bd*) chytrid genera that were extracted from epithelial swabs. The presence/absence of *Bd* was tested by using the *Bd*-specific primers *Bd1a/Bd2a* [49].

Toe clips were dehydrated in an alcohol series (70%, 96% and $2\times 100\%$ alcohol), elucidated with xylene and infiltrated with paraffin wax at 60°C . Following the wax infiltration the tissues were embedded in paraffin wax blocks using a SLEE MPS/P2 embedding centre and sectioned at $6\ \mu\text{m}$ with a Reichert-Jung 2050 automated microtome. Sections were stained with Mayer's haematoxylin and counter stained with eosin. Slides were then examined under a Nikon Eclipse E800 compound microscope for the presence of *Bd* using the criteria described in Berger *et al.* [52,53].

Environmental Niche Modelling

ENM is a statistical modelling tool where a priori set algorithm searches relationships within the data (as opposed to process based modelling). Our ENM relies on maximum entropy principles (using the software Maxent 3.3.3.k [54,55,56]). The approach basically compares the values of the variables at the sites where a species is present against a background sampled from sites with no presences. Maxent uses machine learning to maximise the entropy function; but see Elith *et al.* [32] for a detailed description of the statistics. Despite the number of available algorithms, Maxent is one of the best ENM techniques when using presence-only data [e.g. 57,58].

Herein we report absence of *Bd*. Nevertheless, the true absence of organisms is in general difficult to ascertain (e.g. compare the

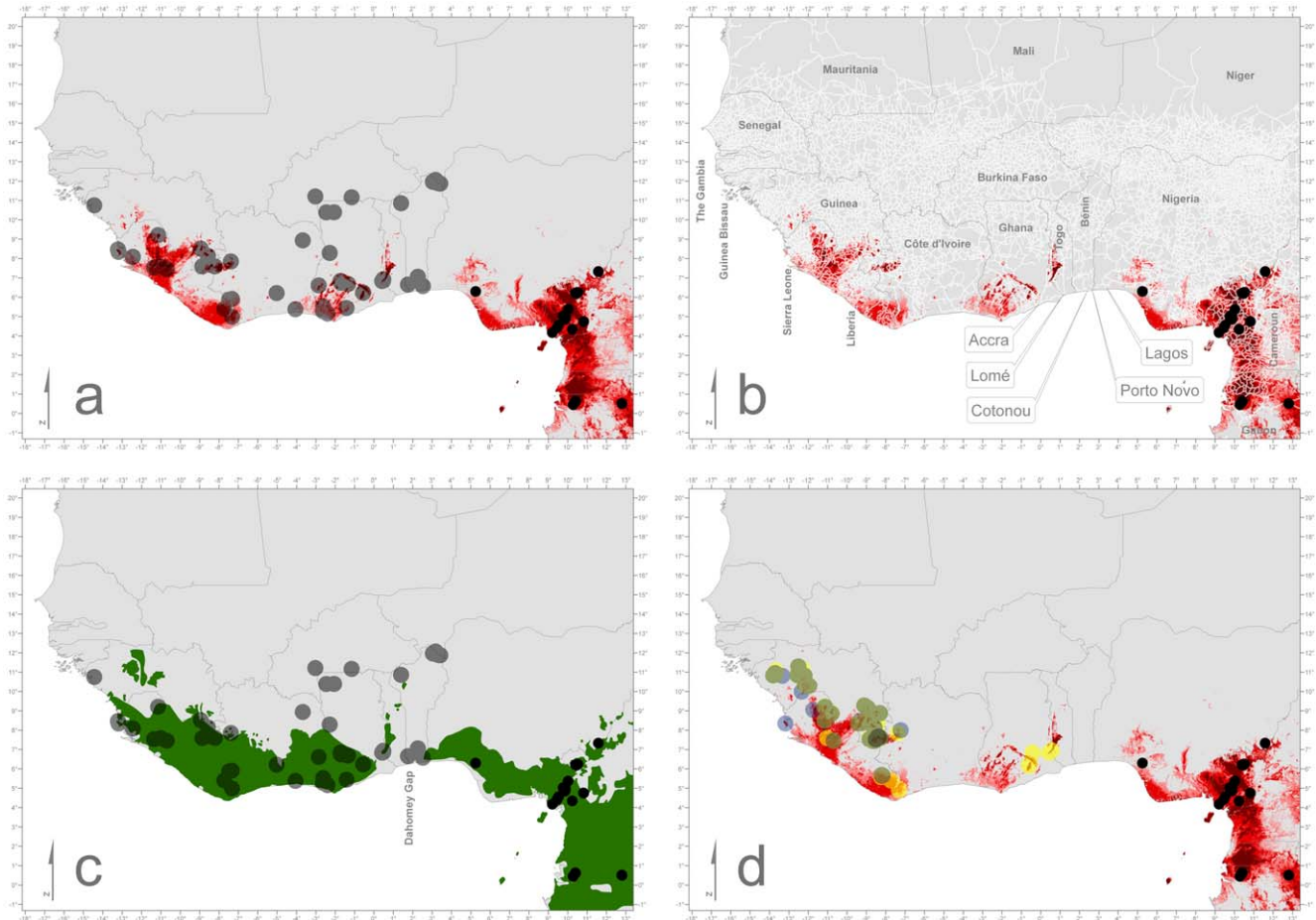


Figure 2. Detailed maps of West Africa. From top to bottom, depicting the most western positive records of *Bd* (black) and the negative records (transparent grey) (2a). Figure 2b indicates in white transparent lines the transport system (roads) of the region. If *Bd* is transported via humans, the area around Accra (Ghana) is most likely to be the point of introduction (well connected via transportation routes and highly suitable environment). Further shown (2c) are the extents of the potentially forest regions (green) with the Upper Guinea Forests west of the Dahomey Gap [after 131,2a]. In 2d the known point localities of *Conraua alleni* (transparent yellow), *Petropedetes natator* (transparent blue) (light green = overlapping localities), and *Nimbaphrynoides occidentalis* (dark green) are depicted.
doi:10.1371/journal.pone.0056236.g002

findings from [59] and [29]). Therefore we applied the most conservative method using only confirmed presences from the African continent with a high spatial certainty for our ENMs

($n = 112$ reported records; see Appendix S3). The aim was to model the likely geographic distribution of *Bd* and strictly avoid type II errors.

We used 17 environmental parameters on a 30 arc second grid (which equals roughly 1 km^2) for the whole African continent as variables in our ENM. All parameters were continuous (not categorical) and are classified into three broad categories: climate, environment and altitude. The climate variables comprised ten parameters, all averaged from 1950 to 2000. Five environmental parameters were obtained from two satellite imagery data sets with different spectral sensitivities (SPOT4 & MODIS). Altitude was converted into two parameters calculated from a radar derived data set (SRTM) (see Table 2).

In total we calculated 100 ENMs. Models were replicated using sub sampling. For each model, points were randomly allocated into two groups: 70% ($n = 79$) for model training and 30% ($n = 33$) for model testing. From these 100 models three average models were derived: maximum, mean and minimum predictions gained. The maximum, mean and minimum models used the average 10 percentile thresholds over all 100 models to gain three binomial models. Models were validated via the area under the curve (AUC) criterion, which refers to the receiver operating characteristic

Table 1. Number of amphibian samples per West African country tested for the presence of *Bd*.

Country	Swab	Toe/Skin	Total
Bénin	120	13	133
Burkina Faso	0	3	3
Côte d'Ivoire	29	26	55
Ghana	254	36	290
Guinea	243	44	287
Liberia	10	4	14
Sierra Leone	0	11	11
Total	656	137	793

swab = molecular investigation of swab sample; toe/skin = histological examination of toe tips (anurans) and skin pieces (caecilians).
doi:10.1371/journal.pone.0056236.t001

Table 2. Environmental parameters used in the environmental niche modelling (ENM) approach with a short description of the parameter and the source of the original data.

No.	Category	Parameter	Description	Original source
1	climate	tmax_low	lowest value of the maximum temperatures	[132]
2	climate	tmax_high	highest value of the maximum temperatures	[132]
3	climate	tmax_std	standard deviation the maximum temperatures	[132]
4	climate	tmin_low	lowest value of the minimum temperatures	[132]
5	climate	tmin_high	highest value of the minimum temperatures	[132]
6	climate	tmin_std	standard deviation of the minimum temperatures	[132]
7	climate	prec_high	highest precipitation value (wettest month)	[132]
8	climate	prec_low	lowest precipitation value (driest month)	[132]
9	climate	prec_std	standard deviation of the precipitation	[132]
10	climate	prec_sum	total annual precipitation	[132]
11	environment	glc2	vegetation derived from the near-infrared (0.78–0.89 μm) wavelength of the SPOT4 satellite	[133]
12	environment	glc3	vegetation derived from the red (0.61–0.68 μm) wavelength of the SPOT4 satellite	[133]
13	environment	bare	percentage of bare ground (MODIS)	[134]
14	environment	herb	percentage of herbaceous ground cover (MODIS)	[135]
15	environment	tree	percentage of woody vegetation (MODIS)	[136]
16	altitude	srtm_c	elevational contrast calculated from the SRTM30 dataset using a 3×3 moving window	[137]
17	altitude	srtm_v	elevational variance calculated from the SRTM30 dataset using a 9×9 moving window	[137]

Parameters 1–10, calculated in two steps: i) an average (from the years 1950 to 2000) for each month (January to February), thus leading to 12 averages; ii) calculation as detailed in the main text. Parameters 11–12: calculated from the annual average of the year 2000. Parameters 13–15: extracted from the 500 m MODIS vegetation continuous fields dataset, which are derived from monthly composites that are in turn derived from eight day composites. All 7 bands were used and smoothed via a 4×4 rectangular neighbourhood function. Parameters 16–17: after calculation data were ln-transformed and multiplied by 10 to assure compatibility with other environmental parameters.

doi:10.1371/journal.pone.0056236.t002

(ROC) curve. This measurement is threshold-independent and commonly used for such models (e.g. [57]).

Results and Discussion

Despite our extensive sampling on a species and geographical level, we did not detect any evidence of *Bd* in the investigated sites, neither by molecular (at least, any strain known to cause severe chytridiomycosis [60]) nor by histological investigations. Hence, the only region in sub-Saharan Africa without any confirmed records remains the Upper Guinea Forests and the surrounding savannahs.

One positive *Bd* record from Ghana [61] is often cited in the literature and has been used for ENMs [33,34,37]. However, it was excluded from our ENM analysis because the specimen stems from the pet trade, has an unknown origin and was tested after being imported into the US. Thus, the specimen could have contracted the pathogen from anyone of a number of possible sources within the trade pathway. Further support for our decision stems from finding that infections at the population level are highly dependent on the density of individuals [62,63]. Crammed conditions are common in the pet trade and prevalence is high in traded amphibians [64,65,66,67]. In addition, no other *Bd* record was reported from Ghana (n = 292, this paper).

Continental Modelling

In contrast to these findings our ENMs show that *Bd* could potentially occur in West Africa. So far *Bd* has never been

recorded west of Okomu National Park, which lies east of Lagos, Nigeria (see Figs. 1 & 2b). As the fungus prefers moist and comparatively cooler environments [see 68,69,70,71,72,73,74,75,76], we hypothesise that the Dahomey Gap, a naturally non-forested stretch ranging from eastern Ghana to western Nigeria, consists of unsuitable habitats and therefore provides a distributional barrier (Fig. 2c). However, this hypothesis must be treated cautiously because *Bd* can survive outside its preferred temperature range [69,77] and could therefore cross the Dahomey Gap. In addition a number of other factors may influence its persistence as well (e.g. life-history stage at exposure [78,79], host immunity [80], host stress levels [81] and anthropogenic influences [82,83]).

Overall the ENMs performed well, with a mean training AUC of 0.979 ± 0.002 and testing AUC = 0.967 ± 0.010 . All 17 selected variables contributed to the models. The highest contribution came from the “minimum precipitation” (prec_low 35.3%), followed by the “variance in elevation” (srtm_v 22.6%) and the “lowest value of the maximum temperatures” (tmax_low 17.5%). Jackknife testing revealed “highest value of the maximum temperatures” (tmax_high) as the variable with the greatest information content when used alone (for details see Appendix S4).

Until now no fine-grained continental ENM existed, only coarser ones (2.5 arc minutes) on a global scale [see 37,40]. Our models showed that *Bd* could occur in the investigated region but not as widespread as in some other parts of Africa. Only a few West African areas were predicted as suitable for *Bd*. These are primarily the comparatively wetter or higher altitude areas of the

Upper Guinea forests (see Fig. 2a). Our modelling results show a picture different to the recent global modelling approaches for *Bd* [33,35]. The main differences are that large areas in Angola, Namibia and Zambia predicted by Ron [33] and Rödder *et al.* [35] are not predicted in our approach. Other differences concern areas in western Africa where our ENM predict a smaller range compared to Ron [33] and Rödder *et al.* [35]. Interestingly large areas in Ethiopia are predicted to be highly suitable for *Bd* by all approaches. Similarly, a narrow region in northern Africa, ranging from Tunisia over Algeria to Morocco was predicted. ENMs for both regions were recently confirmed by respective positive *Bd* records [84,85]. The causes for the differences between our ENMs and previous ones are complex. The models differ substantially in the parameter setting of the algorithm, their resolution, the points used, and the environmental parameters.

The origin of *Bd* is still unknown. One hypothesis was that the pathogen originated in Africa and spread globally via the commercial trade of clawed frogs (Pipidae: *Xenopus* spp.). Histological and molecular analyses [86,87], detailed trade history [88] and known occurrences at that time [89,90,91] supported this hypothesis [see also 29,92]. In addition the oldest known record originated from Cameroon, more specifically *Bd* was detected in a museum voucher of *Xenopus fraseri*, collected in 1933 from lowland rainforest [87]. Now an older record from Japan, dated to 1902 [93], challenges the hypothesis that *Bd* originated in Africa. However, there is more than one lineage of *Bd* [60,93,94] and one or more pathogenic lineages could have spread out of Africa.

This leads to the question of how *Bd* is transported from one location to another. Trade of live animals is commonly suggested as the most likely means of dispersal [4,12,64,60,65,86,94,95,96,97,98,99]. However, recent findings support the notion that other dispersal vectors are also possible such as reptiles, birds or mammals [100,101,102].

Potential Error Sources

We herein did not find any evidence for *Bd* in West Africa. Several explanations are plausible why *Bd* was not recorded in our study area. Either (i) sampling was flawed if *Bd* follows seasonal patterns and we sampled during a low prevalence cycle [e.g. 72,103] or (ii) species were sampled whose ecological niches do not or only slightly overlap with that of *Bd* [e.g. 73,104,105]. Other possibilities are (iii) that sampling in the field failed, e.g. due to blemished preservation [e.g. 46,106] or (iv) poor diagnostic assays, e.g. presence of PCR inhibitors [e.g. 107]. Although possible, it is unlikely that *Bd* was not detected due to aforementioned errors. Seasonality might be a problem. We sampled mainly during the wet season and even in highly seasonal *Bd* infected regions, positive confirmation is possible year round [108] though not everywhere [68,73,103,109].

We sampled species with ecological requirements strongly overlapping with the fungus, including avoiding xeric species such as *Amietophrynus xeros* or *Tomopterna cryptotis*. Many of the sampled genera have previously been shown to be infected with *Bd* in other African regions (e.g.: *Amietophrynus* (mean prevalence 21.05%; Bayesian credible interval 11.13–36.46%), *Hyperolius* (39.51%; 35.26–43.92%), *Leptopelis* (28.57%; 22.03–36.18%), *Petropedetes* (11.11%; 15.17–65.11%), *Phrynobatrachus* (17.65%; 9.63–30.32%), *Ptychadena* (26.26%; 20.36–33.17%), *Xenopus* (3.35%; 2.35–4.77%) [calculated from 26,27,28,29,85,86,90,91,92]).

Thirdly, anuran tissue samples, from which DNA was successfully extracted, were preserved following the same procedures as *Bd*-swabs and toe clips. In addition all methods used in this paper have already detected *Bd* in samples from other regions [see method section and 28,86].

Lastly, amplification of DNA from frog 16 s and fungal ITS regions for the samples at UW (n = 103) demonstrate that swabbing was effective (see S2). In terms of numbers of individuals and geographical scale, our sample size is also large enough to make a confident diagnosis. All the above mentioned facts support our conclusion that our sampling is representative for West African amphibians and that *Bd* is highly likely to be absent in western Africa.

Conservation implications

Though *Bd* has been detected in a number of species with different ecological niches, most populations which are adversely affected by the fungus are from higher altitudes and inhabit mostly flowing streams [see above and 105,110]. Therefore three West African species are of major conservation concern with regards to *Bd* infection: *Nimbaphrynoides occidentalis* (samples tested herein: n = 62), *Conraua alleni* (n = 86) and *Petropedetes nator* (n = 158). The Nimba toad, *N. occidentalis*, is the only truly viviparous anuran species and is restricted to narrow ranges of high altitude grasslands of the Nimba Mountains, which are situated at the border between Guinea, Liberia and Côte d'Ivoire [111,112 and citations therein]. This species is listed as “Critically Endangered” because of its very small distribution range and the decline of suitable habitats [113]. *C. alleni* and *P. nator* are frogs occurring in streams, mostly in mountainous forest habitats. They are listed as “Vulnerable” and “Near Threatened” respectively [113].

The geographic distributions of all three species show a high overlap with the potential geographic ENM distribution of *Bd*. The models highly predict the occurrence of *Bd* in areas where all three species can be found (Fig. 2d). The fact that *N. occidentalis* is independent of flowing streams does not necessarily render this species less susceptible to *Bd*, as *Bd* has already been detected in at least three African species without aquatic larval stages: *Nectophrynoides asperginis* [114,115] (though note that the species lived (extinct in the wild) in the spray zone of Kihansi River Gorge, Tanzania), *Arthroleptis* sp. (in Gabon [29] and in Malawi [116]) and the suspected direct developer *Balebreviceps hillmani* (in Ethiopia [85]). *Bd* is also suspected to be responsible for the extinction of four other direct developing species (= no aquatic larval stage): *Craugastor milesi* (from Honduras), *Rheobatrachus silus*, *R. vitellinus*, and *Taudactylus diurnus* (from Australia). Though heavy logging occurred in the areas of distribution of the Australian species as well and all four species are associated with water (*C. milesi* adults live along rivers; *R. silus* & *R. vitellinus* have aquatic adults; *T. diurnus* lays eggs in water) [1,113]. Therefore, we conclude that *Bd* could potentially occur in western Africa due to the availability of suitable habitats and susceptible hosts.

Our sampling covers a representative subsample of West African species. This is not only due to the number of species sampled but also due to the fact that two species have been intensively sampled, which are habitat generalists (S1) and have a wide distribution, i.e. *Phrynobatrachus latifrons* (n = 79) and *Hoplobatrachus occipitalis* (n = 67) [117]. The latter species is also the major traded species in local and regional food markets and is therefore transported over long distances [118]. The species is also transported across the Dahomey Gap, more specifically from north-eastern Bénin to south-western Nigeria and probably even further eastwards [118,119]. Thus the possibility that *Bd* will be spread from Nigeria to the west is reduced.

We will briefly highlight the most likely entry points for *Bd* from Central Africa to West Africa. Looking at the major transportation routes, a human *Bd* transport distribution will in all likelihood first be detected in the region around Accra (Fig. 2b). A highway exists parallel to the coast and connects the major cities (Lagos, Nigeria; Porto Novo & Cotonou in Bénin, Lomé, Togo; Accra, Ghana).

Environmental suitability for *Bd* is low in Bénin and Togo, making Ghana a more likely entry point for *Bd*. Railways exist but mainly in north-south directions and rarely cross international borders. They operate also on a rare and infrequent basis and are not a major means of transportation. The introduction of *Bd* into West Africa via animate vectors is much more difficult to predict. The most likely entry point for them would be either the highlands of Togo or the Atewa range in Ghana (Fig. 2b), because they are closest to the *Bd* positive localities in Nigeria (Okomu NP) and are environmentally suitable for *Bd*.

Every effort has to be made to ensure that *Bd* will not invade western Africa, especially because threats are additive [e.g. 8] and fragmentation has already affected the region heavily [see 120,121,122]. The situation is similar to Madagascar where *Bd* has also not been detected [86,123,124]. For environmental work in the region (e.g. consultant, scientific) we strongly recommend buying new equipment. This has to include the disinfection of materials and equipment transported from *Bd* positive to *Bd* negative regions, especially to *Bd* sensitive regions for example by mining companies as these sensitive areas often coincide with proposed mining areas [see 125,126,127,128,129]. The same precautionary measures should apply for the ecotourism industry [see 130]. Only through acute scientific observation, greater collaboration between conservation and all sectors of industry and commerce can some measure of control be achieved over the spread of wildlife pathogens such as *Bd*.

Supporting Information

Appendix S1 List of West African caecilian and anuran species tested for the presence of *Bd*, and their main ecological characters.

(PDF)

References

- Stuart S, Hoffmann M, Chanson J, Cox N, Berridge R, et al. (2008) Threatened amphibians of the world. Barcelona, Lynx Edition. 758 p.
- Daszak P, Berger L, Cunningham AA, Hyatt AD, Green DE, et al. (1999) Emerging infectious diseases and amphibian population declines. *Emerg Infect Diseases* 5: 735–748.
- Daszak P, Cunningham AA, Hyatt AD (2003) Infectious disease and amphibian population declines. *Divers Distrib* 9: 141–150.
- Skerratt LF, Berger L, Speare R, Cashins S, McDonald KR, et al. (2007) Spread of chytridiomycosis has caused the rapid global decline and extinction of frogs. *EcoHealth* 4: 125–134.
- Fisher MC, Garner TWJ, Walker SF (2009) Global emergence of *Batrachochytrium dendrobatidis* and amphibian Chytridiomycosis in space, time, and host. *Ann Rev Microbiol* 63: 291–310.
- Kilpatrick AM, Briggs CJ, Daszak P (2009) The ecology and impact of chytridiomycosis: an emerging disease of amphibians. *Trends Ecol Evol* 25: 109–118.
- Heard M, Smith KF, Ripp K (2011) Examining the evidence for chytridiomycosis in threatened amphibian species. *PLoS One* 6: e23150. Available: <http://www.plosone.org/article/info%3Adoi%2F10.1371%2Fjournal.pone.0023150>. Accessed on 19 March 2012.
- Wake DB (2012) Facing extinction in real time. *Science* 335: 1052–1053.
- Berger L, Speare R, Daszak P, Green DE, Cunningham AA, et al. (1998) Chytridiomycosis causes amphibian mortality associated with population declines in the rain forests of Australia and Central America. *PNAS* 95: 9031–9036.
- Berger L, Speare R, Hyatt AD (1999) Chytrid fungi and amphibian declines: overview, implications and future directions. In: Campbell, A, editor. *Declines and disappearances of Australian frogs*. Canberra, Environment Australia. pp. 23–33.
- McDonald KR, Alford RA (1999) A review of declining frogs in northern Queensland. In: Campbell, A, editor. *Declines and Disappearances of Australian Frogs*. Canberra, Environment Australia. pp. 14–22.
- Waldman B, van de Wolfshaar KE, Klena JD, Andjic V, Bishop PJ, et al. (2001) Chytridiomycosis in New Zealand frogs. *Surveillance* 28: 9–11.
- Crawford AJ, Lips KR, Bermingham E (2010) Epidemic disease decimates amphibian abundance, species diversity, and evolutionary history in the highlands of central Panama. *PNAS* 107: 13777–13782.
- Lips KR (1999) Mass mortality and population declines of Anurans at an upland site in western Panama. *Conserv Biol* 13: 117–125.
- Young BE, Lips KR, Reaser JK, Ibañez R, Salas AW, et al. (2001) Population declines and priorities for amphibian conservation in Latin America. *Conserv Biol* 15: 1213–1223.
- Lips KR, Mendelson III JR, Muñoz-Alonso A, Canseco-Márquez L, Mulcahy DG (2004) Amphibian population declines in montane southern Mexico: resurveys of historical localities. *Biol Conserv* 119: 555–564.
- Lips KR, Brem F, Brenes R, Reeve JD, Alford RA, et al. (2006) Emerging infectious disease and the loss of biodiversity in a Neotropical amphibian community. *PNAS* 103: 3165–3170.
- Lips KR, Diffendorfer J, Mendelson III JR, Sears MW (2008) Riding the wave: reconciling the roles of disease and climate change in amphibian declines. *PLoS Biol* 6: e72. Available: <http://www.plosbiology.org/article/info:doi/10.1371/journal.pbio.0060072>. Accessed 11 October 2011.
- Bradley GA, Rosen PC, Sredl MJ, Jones TR, Longcore JE (2002) Chytridiomycosis in native Arizona frogs. *J Wildl Dis* 38: 206–212.
- Muths E, Corn PS, Pessier AP, Green DE (2003) Evidence for disease-related amphibian decline in Colorado. *Biol Conserv* 110: 357–365.
- Rachowicz LJ, Knapp RA, Morgan JAT, Stice MJ, Vredenburg VT, et al. (2006) Emerging infectious disease as a proximate cause of amphibian mass mortality. *Ecology* 87: 1671–1683.
- Bosch J, Martínez-Solano I, García-París M (2001) Evidence of a chytrid fungus infection involved in the decline of the common midwife toad (*Alytes obstetricans*) in protected areas of central Spain. *Biol Conserv* 97: 331–337.
- Aanensen DM (2011) *Bd*-Maps. www.bd-maps.net. Accessed 28 February 2012.
- Imasuen AA, Weldon C, Aisien MSO, du Preez LH (2009) Amphibian chytridiomycosis: first report in Nigeria from the skin slough of *Chironomantis rufescens*. *Froglog* 90: 6–8.
- Imasuen AA, Aisien MSO, Weldon C, Dalton DL, Kotze A, et al. (2011) Occurrence of *Batrachochytrium dendrobatidis* in Amphibian Populations of Okomu National Park, Nigeria. *Herpetol Rev* 42: 379–382.
- Reeder NMM, Cheng TL, Vredenburg VT, Blackburn DC (2011) Survey of the chytrid fungus *Batrachochytrium dendrobatidis* from montane and lowland frogs in eastern Nigeria. *Herpetol Notes* 4: 83–86.
- Baláz V, Kopecký O, Gvozdík V (2012) Presence of the amphibian chytrid pathogen confirmed in Cameroon. *Herpetol J* 22: 191–194.

Appendix S2 List of study areas, their geographic positions as well as details of sampling and analysis for each sample.

(XLS)

Appendix S3 List of positive African *Bd* records.

(PDF)

Appendix S4 Details of the variable contributions to the calculated ENMs.

(PDF)

Acknowledgments

ENM parameters were provided by Jakob Fahr, Matthias Herkt, Günther Barnickel and Martin Wegmann. Their help is highly appreciated. We especially thank the “Bundesamt für Naturschutz”, Bonn for issuing CITES import permits and the “Directeur Nationale de la Protection de la Nature” and “L’Organe de Gestion CITES Guinée” in Guinea and the “Forestry Development Authority” in Liberia for the respective export permits. Our gratitude likewise goes to all West African responsible governments and their ministries for issuing permits, and the numerous field assistants who provided invaluable help. Finally we would like to thank the two anonymous reviewers and the academic editor, Matthew Fisher, who strongly improved the manuscript.

Author Contributions

Laboratory work: MTM TDB CW TO EW. Modelling: J. Penner MH. Conceived and designed the experiments: J. Penner GBA MTM TDB MH LS CW AAC TO EW DMP DR AH COB WO J. Plötner AO ADL MOR. Performed the experiments: GBA MTM TDB MH LS CW TO EW DMP DR COB AO J. Plötner ADL. Analyzed the data: J. Penner GBA MTM TDB MH CW TO EW ADL MOR. Wrote the paper: J. Penner MTM TDB CW MOR.

28. Doherty-Bone TM, Gonwouo NL, Hirschfeld M, Ohst T, Weldon C, et al (in press) *Batrachochytrium dendrobatidis* in amphibians of Cameroon, including first records of infected caecilian hosts. *Dis Aquat Org* doi: 10.3354/dao02557
29. Bell RC, Garcia AVG, Stuart BL, Zamudio KR (2011) High prevalence of the amphibian chytrid pathogen in Gabon. *EcoHealth* 8: 116–120.
30. Peterson AT, Soberón J, Pearson RG, Anderson RP, Martínez-Meyer E, et al. (2011) Ecological niches and geographic distributions. *Monogr Popul Biol* 49: 1–314.
31. Franklin J (2010) *Mapping Species Distributions: Spatial Inference and Prediction*. Cambridge, Cambridge University Press. 338 p.
32. Elith J, Phillips S, Hastie T, Dudik M, Chee Y, et al. (2011) A statistical explanation of MaxEnt for ecologists. *Divers Distrib* 17: 43–57.
33. Ron SR (2005) Predicting the distribution of the amphibian pathogen *Batrachochytrium dendrobatidis* in the New World. *Biotropica* 37: 209–221.
34. Rödder D, Veith M, Lötters S (2008) Environmental gradients explaining the prevalence and intensity of infection with the amphibian chytrid fungus: the host's perspective. *Anim Conserv* 11: 513–517.
35. Rödder D, Kielgast J, Bielby J, Schmidtlein S, Bosch J, et al. (2009) Global amphibian extinction risk assessment for the Panzootic chytrid fungus. *Diversity* 1: 52–66.
36. Rödder D, Kielgast J, Lötters S (2010) Future potential distribution of the emerging amphibian chytrid fungus under anthropogenic climate change. *Dis Aquat Org* 92: 201–207.
37. Puschendorf R, Carnaval AC, VanDerWal J, Zumbado-Ulate H, Chaves G, et al. (2009) Distribution models for the amphibian chytrid *Batrachochytrium dendrobatidis* in Costa Rica: proposing climatic refuges as a conservation tool. *Divers Distrib* 15: 401–408.
38. Adams MJ, Chelgren ND, Reinitz D, Cole RA, Rachowicz LJ, et al. (2010) Using occupancy models to understand the distribution of an amphibian pathogen, *Batrachochytrium dendrobatidis*. *Ecol Appl* 20: 289–302.
39. Lötters S, Kielgast J, Bielby J, Schmidtlein S, Bosch J, et al. (2010) The link between rapid enigmatic amphibian decline and the globally emerging chytrid fungus. *EcoHealth* 6: 358–372.
40. Murray KA, Retallick RWR, Puschendorf R, Skerratt LF, Rosauer D, et al. (2011) assessing spatial patterns of disease risk to biodiversity: implications for the management of the amphibian pathogen, *Batrachochytrium dendrobatidis*. *J Appl Ecol* 48: 163–173.
41. Tinoco BA, Astudillo PX, Latta SC, Graham CH (2009) Distribution, ecology and conservation of an endangered Andean hummingbird: the Violet-throated Metaltail (*Metallura baroni*). *Bird Conserv Int* 19: 63–76.
42. Tittensor DP, Baco AR, Brewin PE, Clark MR, Consalvey M, et al. (2009) Predicting global habitat suitability for stony corals on seamounts. *J Biogeogr* 36: 1111–1128.
43. Grafe TU, Stewart MM, Lampert KP, Rödel M-O (2011) Putting toe clipping into perspective: A viable method for marking anurans. *J Herpetol* 45: 28–35.
44. Burrowes PA, Alica A, Longo AV, Joglar RL (2011) Toes versus swabs? Evaluation of the best tissue source for detection of *Batrachochytrium dendrobatidis* in field-caught amphibians. *Herpetol Rev* 42: 359–362.
45. Skerratt LF, Mendez D, McDonald KR, Garland S, Livingstone J, et al. (2011) Validation of diagnostic tests in wildlife: the case of chytridiomycosis in wild amphibians. *J Herpetol* 45: 444–450.
46. Van Sluys M, Kriger KM, Phillott AD, Campbell R, Skerratt LF, et al. (2008) Storage of samples at high temperatures reduces the amount of amphibian chytrid fungus *Batrachochytrium dendrobatidis* DNA detectable by PCR assay. *Dis Aquat Org* 81: 93–97.
47. Boyle DG, Boyle DB, Olsen V, Morgan JAT, Hyatt AD (2004) Rapid quantitative detection of chytridiomycosis (*Batrachochytrium dendrobatidis*) in amphibian samples using real-time Taqman PCR assay. *Dis Aquat Org* 60: 141–148.
48. Garland S, Wood J, Skerratt L (2011) Comparison of sensitivity between real-time detection of a TaqMan assay for *Batrachochytrium dendrobatidis* and conventional detection. *Dis Aquat Org* 94: 101–105.
49. Annis SL, Dastoor FP, Ziel H, Daszak P, Longcore JE (2004) A DNA-based assay identifies *Batrachochytrium dendrobatidis* in amphibians. *J Wildl Dis* 40: 420–428.
50. Vences M, Thomas M, van der Meijden A, Chiari Y, Vieites DR (2005) Comparative performance of the 16S rRNA gene in DNA barcoding of amphibians. *Front Zool* 2: 5.
51. White TJ, Bruns T, Lee S, Taylor J (1990) Amplification and direct sequencing of fungal ribosomal RNA genes for phylogenetics. In: Innis MA, Gelfand DH, Sninsky JJ, White TJ, editors. *PCR protocols: A guide to methods and applications*. California, Academic Press, San Diego. pp. 315–322.
52. Berger L, Speare R, Kent A (1999). Diagnosis of chytridiomycosis in amphibians by histologic examination. *Zoos Print Journal* 15: 184–190.
53. Berger L, Speare R, Kent A (2001) Diagnosis of chytridiomycosis in amphibians by histologic examination. In: Speare R, Steering Committee of Getting the Jump on Amphibian Disease, editors. *Developing management strategies to control amphibian diseases: Decreasing the risks due to communicable diseases*. Townsville, School of Public Health and Tropical Medicine, James Cook University. pp. 83–93.
54. Phillips SJ, Dudik M, Schapire RE (2004) A maximum entropy approach to species distribution modeling. In: Brodley C, editor. *Proceedings of the Twenty-First International Conference on Machine Learning*. New York, ACM Press. pp. 655–662.
55. Phillips SJ, Anderson RP, Schapire RE (2006) Maximum entropy modeling of species geographic distributions. *Ecol Model* 190: 231–259.
56. Phillips SJ, Dudik M (2008) Modeling of species distributions with Maxent: new extensions and a comprehensive evaluation. *Ecography* 31: 161–175.
57. Elith J, Graham CH, Anderson RP, Dudik M, Ferrier S, et al. (2006) Novel methods improve prediction of species' distributions from occurrence data. *Ecography* 29: 129–151.
58. Heikkinen RK, Marmion M, Luoto M (2011) Does the interpolation accuracy of species distribution models come at the expense of transferability? *Ecography* 35: 276–288.
59. Daversa D, Bosch J, Jeffery K (2011) First survey of the chytrid fungus, *Batrachochytrium dendrobatidis*, in amphibian populations from Gabon, Africa. *Herpetol Rev* 42: 67–69.
60. Farrer RA, Weinert LA, Bielby J, Garner TWJ, Balloux F, et al. (2011) Multiple emergences of genetically diverse amphibian infecting chytrids include a globalized hypervirulent recombinant lineage. *PNAS* 108: 18732–18736.
61. Parker JM, Mikaelian I, Hahn N, Diggs HE (2002) Clinical diagnosis and treatment of epidermal Chytridiomycosis in African Clawed Frogs (*Xenopus tropicalis*). *Comp Med* 52: 265–268.
62. Briggs CJ, Knapp RA, Vredenburg VT (2010) Enzootic and epizootic dynamics of the chytrid fungal pathogen of amphibians. *PNAS* 107: 9695–9700.
63. Stockwell MP, Culow J, Mahony MJ (2010) Host species determines whether infection load increases beyond disease-causing thresholds following exposure to the amphibian chytrid fungus. *Anim Conserv* 13 Suppl. 1: 62–71.
64. Schloegel LM, Picco AM, Kilpatrick AM, Davies AJ, Hyatt AD, et al. (2009) Magnitude of the US trade in amphibians and presence of *Batrachochytrium dendrobatidis* and ranavirus infection in imported North American bullfrogs (*Rana catesbeiana*). *Biol Conserv* 142: 1420–1426.
65. Schloegel LM, Ferreira CM, James TY, Hipolito M, Longcore JE, et al. (2010) The North American bullfrog as a reservoir for the spread of *Batrachochytrium dendrobatidis* in Brazil. *Anim Conserv* 13: 53–61.
66. Catenazzi A, Vredenburg VT, Lehr E (2010) *Batrachochytrium dendrobatidis* in the live frog trade of *Telmatobius* (Anura: Ceratophryidae) in the tropical Andes. *Dis Aquat Org* 92: 187–191.
67. Bai C, Liu X, Fisher MC, Garner TWJ, Li Y (2012) Global and endemic Asian lineages of the emerging pathogenic fungus *Batrachochytrium dendrobatidis* widely infect amphibians in China. *Divers Distrib* 18: 307–318.
68. Berger L, Speare R, Hines HB, Marantelli G, Hyatt AD, et al. (2004) Effect of season and temperature on mortality in amphibians due to chytridiomycosis. *Aust Vet J* 82: 31–36.
69. Piotrowski JS, Annis SL, Longcore JE (2004) Physiology of *Batrachochytrium dendrobatidis*, a chytrid pathogen of amphibians. *Mycologia* 96: 9–15.
70. Drew A, Allen EJ, Allen LJS (2006) Analysis of climatic and geographic factors affecting the presence of chytridiomycosis in Australia. *Dis Aquat Org* 68: 245–250.
71. Bosch J, Carrascal LM, Duran L, Walker S, Fisher MC (2007) Climate change and outbreaks of amphibian chytridiomycosis in a montane area of Central Spain; is there a link? *Proc R Soc Lond B* 274: 253–260.
72. Kriger KM, Hero J-M (2007) Large-scale seasonal variation in the prevalence and severity of chytridiomycosis. *J Zool* 271: 352–359.
73. Kriger KM, Hero J-M (2007) The chytrid fungus *Batrachochytrium dendrobatidis* is non-randomly distributed across amphibian breeding habitats. *Divers Distrib* 13: 781–788.
74. Longcore JR, Longcore JE, Pessier AP, Halteman WA (2007) Chytridiomycosis widespread in anurans of north eastern United States. *J Wildl Manage* 71: 435–444.
75. Murray K, Skerratt LF, Speare R, McCallum H (2009) Detecting the impact and dynamics of disease in species threatened by the amphibian chytrid fungus, *Batrachochytrium dendrobatidis*. *Conserv Biol* 23: 1242–1252.
76. Skerratt LF, McDonald KR, Hines HB, Berger L, Mendez D, et al. (2010) Applications of the survey protocol for chytridiomycosis to Queensland, Australia. *Dis Aquat Org* 92: 117–129.
77. Woodhams DC, Alford RA, Briggs CJ, Johnson M, Rollins-Smith LA (2008) Life-history trade-offs influence disease in changing climates: strategies of an amphibian pathogen. *Ecology* 89: 1627–1639.
78. Lamirande EW, Nichols DK (2002) Effects of host age on susceptibility to cutaneous chytridiomycosis in blue- and-yellow poison dart frogs (*Dendrobates tinctorius*). In: McKinnell RG, Carlson DL, editors. *Proceeding of the sixth international symposium on the pathology of reptiles and amphibians*. Minnesota, University of Minnesota. pp. 3–16.
79. Carey C, Bruzgul JE, Livo IJ, Walling ML, Kuehl KA, et al. (2006) Experimental exposures of boreal toads (*Bufo boreas*) to a pathogenic chytrid fungus (*Batrachochytrium dendrobatidis*). *EcoHealth* 3: 5–21.
80. Ribas L, Li M-S, Dodding BJ, Robert J, Seidel JA, et al. (2009) Expression profiling the temperature-dependent amphibian response to infection by *Batrachochytrium dendrobatidis*. *PLoS One* 4: e8408. Available: <http://www.plosone.org/article/info:doi%2F10.1371%2Fjournal.pone.0008408>. Accessed 10 January 2012.
81. Burgin S, Schell CB, Briggs C (2005) Is *Batrachochytrium dendrobatidis* really the proximate cause of frog decline? *Acta Zool Sin* 51: 344–348.
82. St-Amour V, Wong WM, Garner TWJ, Lesbarrères D (2008) Anthropogenic influence on prevalence of 2 amphibian pathogens. *Emerg Infect Diseases* 14: 1175–1176.

83. Becker CG, Zamudio KR (2011) Tropical amphibian populations experience higher disease risk in natural habitats. *PNAS* 108: 9893–9898.
84. El Mouden EH, Slimani T, Donaire D, Fernández-Beakoetxea S, Fisher MC, et al. (2011) First record of the chytrid fungus *Batrachochytrium dendrobatidis* in North Africa. *Herpetol Rev* 42: 71–75.
85. Gower DJ, Doherty-Bone TM, Aberra RK, Mengistu A, Schwaller S, et al. (2012) High prevalence of the amphibian chytrid fungus (*Batrachochytrium dendrobatidis*) across multiple taxa and localities in the highlands of Ethiopia. *Herpetol J* 22: 225–233.
86. Weldon C, du Preez LH, Hyatt AD, Muller R, Speare R. (2004) Origin of the amphibian chytrid fungus. *Emerg Infect Diseases* 10: 2100–2105.
87. Soto-Azat C, Clarke BT, Poynton JC, Cunningham AA (2010) Widespread historical presence of *Batrachochytrium dendrobatidis* in African pipid frogs. *Divers Distrib* 16: 126–131.
88. Weldon C, de Villiers L, du Preez LH (2007) Quantification of the trade in *Xenopus laevis* from South Africa, with implications for biodiversity conservation. *Afr J Herpetol* 56: 77–83.
89. Hopkins S, Channing A (2003) Chytrid fungus in northern and western Cape frog populations, South Africa. *Herpetol Rev* 34: 334–336.
90. Goldberg TL, Read AM, Lee MH (2007) Chytrid Fungus in Frogs from an Equatorial African Montane Forest in western Uganda. *J Wildl Dis* 43: 521–524.
91. Greenbaum E, Kusamba C, Aristote MM, Reed K (2008) Amphibian chytrid fungus infections in *Hyperolius* (Anura: Hyperoliidae) from eastern Democratic Republic of Congo. *Herpetol Rev* 39: 70–73.
92. Kielgast J, Rödder D, Veith M, Lötters S (2010) Widespread occurrence of the amphibian chytrid fungus in Kenya. *Anim Conserv* 13: 1–8.
93. Goka K, Yokoyama J, Une Y, Kuroki T, Suzuki K, et al. (2009) Amphibian chytridiomycosis in Japan: distribution, haplotypes and possible route of entry into Japan. *Mol Ecol* 18: 4757–4774.
94. Schloegel LM, Toledo LF, Longcore JE, Greenspan SE, Vieira CA (2012) Novel, panzootic and hybrid genotypes of amphibian chytridiomycosis associated with the bullfrog trade. *Mol Ecol* 21: 5162–5177.
95. Mazzoni R, Cunningham AA, Daszak P, Apolo A, Perdomo E, et al. (2003) Emerging pathogen of wild amphibians in frogs (*Rana catesbeiana*) farmed for international trade. *Emerg Infect Diseases* 9: 995–998.
96. Garner TWJ, Perkins MW, Govindarajulu P, Seglie D, Walker SF, et al. (2006) The emerging amphibian pathogen *Batrachochytrium dendrobatidis* globally infects introduced populations of the North American bullfrog, *Rana catesbeiana*. *Biol Lett* 2: 455–459.
97. Fisher MC, Garner TWJ (2007) The relationship between the emergence of *Batrachochytrium dendrobatidis*, the international trade in amphibians and introduced amphibian species. *Fungal Biol Rev* 21: 2–9.
98. Kriger KM, Hero J-M (2009) Chytridiomycosis, amphibian extinctions, and lessons for the prevention of future panzootics. *EcoHealth* 6: 6–10.
99. Weldon C, Fisher MC (2011) The effect of trade-mediated spread of amphibian chytrid on amphibian conservation. In: IOM (Institute of Medicine), editor. *Fungal diseases: An emerging challenge to human, animal, and plant health*. Washington, DC, The National Academies Press. pp. 355–367.
100. Johnson ML, Speare R (2005) Possible modes of dissemination of the amphibian chytrid *Batrachochytrium dendrobatidis* in the environment. *Dis Aquat Org* 65: 181–186.
101. Kilburn VL, Ibáñez R, Green DM (2011) Reptiles as potential vectors and hosts of the amphibian pathogen *Batrachochytrium dendrobatidis* in Panama. *Dis Aquat Org* 97: 127–134.
102. Garmyn A, Van Rooij P, Pasmans F, Hellebuyck T, Van Den Boeck W, et al. (2012) Waterfowl: Potential environmental reservoirs of the chytrid fungus *Batrachochytrium dendrobatidis*. *PLoS One* 7: e35038. Available: <http://www.plosone.org/article/info%3Adoi%2F10.1371%2Fjournal.pone.0035038>. Accessed: 20 April 2012.
103. Whitfield SM, Kerby J, Gentry LR, Donnelly MA (2012) Temporal variation in infection prevalence by the amphibian chytrid fungus in three species of frogs at La Selva, Costa Rica. *Biotropica* 44: 779–784.
104. Woodhams DC, Ardiipradja K, Alford RA, Marantelli G, Reinert LK, et al. (2007) Resistance to chytridiomycosis varies among amphibian species and is correlated with skin peptide defenses. *Anim Conserv* 10: 409–417.
105. Murray KA, Skerratt LF (2012) Predicting wild hosts for amphibian chytridiomycosis: integrating host life-history traits with pathogen environmental requirements. *Hum Ecol Risk Assess* 18: 200–224.
106. Soto-Azat C, Clarke BT, Fisher MC, Walker SF, Cunningham AA (2009) Non-invasive sampling methods for the detection of *Batrachochytrium dendrobatidis* in archived amphibians. *Dis Aquat Org* 84: 163–166.
107. Hyatt AD, Boyle DG, Olsen V, Boyle DB, Berger L, et al. (2007) Diagnostic assays and sampling protocols for the detection of *Batrachochytrium dendrobatidis*. *Dis Aquat Org* 73: 175–192.
108. Kinney VC, Heemeyer JL, Pessier AP, Lannoo MJ (2011) Seasonal Pattern of *Batrachochytrium dendrobatidis* Infection and Mortality in *Lithobates areolatus*: Affirmation of Vredenburg's "10,000 Zoospore Rule". *PLoS One* 6: e16708. Available: <http://www.plosone.org/article/info%3Adoi%2F10.1371%2Fjournal.pone.0016708>. Accessed: 18 July 2011.
109. Conradie W, Weldon C, Smith KG, du Preez LH (2011) Seasonal pattern of chytridiomycosis in common river frog (*Amietia angolensis*) tadpoles in the South African Grassland Biome. *Afr Zool* 46: 95–102.
110. Bancroft BA, Han BA, Searle CL, Biga LM, Olson DH, et al. (2011) Species-level correlates of susceptibility to the pathogenic amphibian fungus *Batrachochytrium dendrobatidis* in the United States. *Biodivers Conserv* 20: 1911–1920.
111. Hillers A, Loua N-S, Rödel M-O (2008) Assessment of the distribution and conservation status of the viviparous toad *Nimbaphrynoideis occidentalis* on Monts Nimba, Guinea. *Endang Species Res* 5: 13–19.
112. Sandberger L, Hillers A, Doumbia J, Loua N-S, Brede C, et al. (2010) Rediscovery of the Liberian Nimba toad, *Nimbaphrynoideis liberiensis* (Xavier, 1978) (Amphibia: Anura: Bufonidae), and reassessment of its taxonomic status. *Zootaxa* 2355: 56–68.
113. IUCN (2011) IUCN Red List of Threatened Species. Version 2011.2. www.iucnredlist.org. Accessed 28 February 2012.
114. Rödel M-O (2000) Herpetofauna of West Africa, Vol. I: Amphibians of the West African savanna. Frankfurt/M., Edition Chimaira. 335 p.
115. Mohnke M, Onadeko AB, Hirschfeld M, Rödel M-O (2010) Dried or fried: amphibians in local and regional food markets in West Africa. *TRAFFIC Bull* 22: 117–128.
116. Mohnke M, Onadeko AB, Rödel M-O (2009) Exploitation of frogs – a review with a focus on West Africa. *Salamandra* 45: 193–202.
117. Weldon C, du Preez LH (2004) Decline of Kihansi spray toad, *Nectophrynoideis asperginis*, from the Udzungwa mountains, Tanzania. *Froglog* 62: 2–3.
118. Channing A, Finlow-Bates KS, Haarklau SE, Hawkes PG (2006) The biology and recent history of the critically endangered Kihansi Spray Toad *Nectophrynoideis asperginis* in Tanzania. *J East Afr Nat Hist* 95: 117–138.
119. Conradie W, Harvey J, Kotze A, Dalton DL, Cunningham MJ (2011) Confirmed amphibian chytrid in Mount Mulanje Area, Malawi. *Herpetol Rev* 42: 369–371.
120. Chatelain C, Gautier L, Spichiger R (1996) A recent history of forest fragmentation in southwestern Ivory Coast. *Biodivers Conserv* 5: 37–53.
121. Chatelain C, Dao H, Gautier L, Spichiger R (2004) Forest cover changes in Côte d'Ivoire and Upper Guinea. In: Porter L, Bongers F, Kouamé FN, Hawthorne WD, editors. *Biodiversity of West African forests - an ecological atlas of woody plant species*. Wallingford, CABI Publishing. pp. 15–32.
122. Mayaux P, Bartholomé E, Fritz S, Belward A (2004) A new land-cover map of Africa for the year 2000. *J of Biogeogr* 31: 861–877.
123. Weldon C, du Preez L, Vences M (2008) Lack of detection of the amphibian chytrid fungus (*Batrachochytrium dendrobatidis*) in Madagascar. In: Andreone F, editor. *A Conservation Strategy for the Amphibians of Madagascar*. Monografie XLV Torino, Museo Regionale di Scienze Naturali. pp. 95–106.
124. Vredenburg VT, du Preez L, Raharivololoniaina L, Vieites DR, Vences M, et al. (2012) A molecular survey across Madagascar does not yield positive records of the amphibian chytrid fungus *Batrachochytrium dendrobatidis*. *Herpetol Notes* 5: 507–517.
125. Johnson ML, Berger L, Philips L, Speare R (2003) Fungicidal effects of chemical disinfectants, UV light, desiccation and heat on the amphibian chytrid *Batrachochytrium dendrobatidis*. *Dis Aquat Org* 57: 255–260.
126. Webb R, Mendez D, Berger L, Speare R (2007) Additional disinfectants effective against the amphibian chytrid fungus *Batrachochytrium dendrobatidis*. *Dis Aquat Org* 74: 13–16.
127. Schmidt BR, Furrer S, Kwet A, Lötters S, Rödder D, et al. (2009) Desinfektion als Maßnahme gegen die Verbreitung der Chytridiomykose bei Amphibien. *Zeitschr Feldherp Suppl* 15: 229–241.
128. Phillott AD, Speare R, Hines HB, Skerratt LF, Meyer E, et al. (2010) Minimising exposure of amphibians to pathogens during field studies. *Dis Aquat Org* 92: 175–185.
129. Murray K, Skerratt L, Marantelli G, Berger L, Hunter D, et al. (2011) Hygiene protocols for the control of diseases in Australian frogs. A report for the Australian Government Department of Sustainability, Environment, Water, Population and Communities, Canberra. 26 p.
130. Wollenberg KC, Jenkins RKB, Randrianavelona R, Ralisata M, Rampilamanaan R, et al. (2010) Raising Awareness of Amphibian Chytridiomycosis will not Alienate Ecotourists Visiting Madagascar. *EcoHealth* 7: 248–251.
131. Burgess N, D'Amico Hales J, Underwood E, Dimerstein E (2004) Terrestrial ecoregions of Africa and Madagascar - a conservation assessment. Washington, DC, Island Press. 501 p.
132. Hijmans RJ, Cameron SE, Parra JL, Jones PG, Jarvis A (2005) Very high resolution interpolated climate surfaces for global land areas. *Int J Climatol* 25: 1965–1978.
133. Arnaud M, Leroy M (1991) SPOT 4: a new generation of SPOT satellites. *ISPRS J Photogramm* 46: 205–215.
134. Hansen M, DeFries R, Townshend JR, Carroll M, Dimiceli C, et al. (2003) Vegetation Continuous Fields MOD44B, 2001 Percent bare ground cover, Collection 3, Maryland, University of Maryland, College Park.
135. Hansen M, DeFries R, Townshend JR, Carroll M, Dimiceli C, et al. (2003) Vegetation Continuous Fields MOD44B, 2001 Percent herbaceous ground cover, Collection 3, Maryland, University of Maryland, College Park.
136. Hansen M, DeFries R, Townshend JR, Carroll M, Dimiceli C, et al. (2003) Vegetation Continuous Fields MOD44B, 2001 Percent tree cover, Collection 3, Maryland, University of Maryland, College Park.
137. Farr TG, Rosen PA, Caro E, Crippen R, Duren R, et al. (2007) The shuttle radar topography mission. *Rev Geophys* 45: 1–33.