

Research article

Open Access

Thymidylate synthase, dihydropyrimidine dehydrogenase, ERCC1, and thymidine phosphorylase gene expression in primary and metastatic gastrointestinal adenocarcinoma tissue in patients treated on a phase I trial of oxaliplatin and capecitabine

Kazumi Uchida¹, Peter V Danenberg¹, Kathleen D Danenberg² and Jean L Grem^{*3}

Address: ¹USC Norris Comprehensive Cancer Center, Room 5318, 1441 Eastlake Ave, Los Angeles, CA 90033, USA, ²Response Genetics, Inc, No 620, 1640 Marengo St, Los Angeles, CA 91001, USA and ³University of Nebraska Medical Center, 987680 Nebraska Medical Center, Omaha, NE 68198, USA

Email: Kazumi Uchida - uchida@hosp.net; Peter V Danenberg - pdanenbe@usc.edu; Kathleen D Danenberg - kdanenberg@responsegenetics.com; Jean L Grem* - jgrem@unmc.edu

* Corresponding author

Published: 23 December 2008

Received: 27 January 2008

BMC Cancer 2008, 8:386 doi:10.1186/1471-2407-8-386

Accepted: 23 December 2008

This article is available from: <http://www.biomedcentral.com/1471-2407/8/386>

© 2008 Uchida et al; licensee BioMed Central Ltd.

This is an Open Access article distributed under the terms of the Creative Commons Attribution License (<http://creativecommons.org/licenses/by/2.0>), which permits unrestricted use, distribution, and reproduction in any medium, provided the original work is properly cited.

Abstract

Background: Over-expression of thymidylate synthase (TS) and dihydropyrimidine dehydrogenase (DPD) in tumor tissue is associated with insensitivity to 5-fluorouracil (5-FU). Over-expression of ERCC1 correlates with insensitivity to oxaliplatin (OX) therapy, while high thymidine phosphorylase (TP) levels predict for increased sensitivity to capecitabine (Xel).

Methods: Biopsies of metastatic tumor were taken before OX (130 mg/m² day 1) given with Xel (1200–3000 mg/m² in two divided doses days 1–5 and 8–12) every 3-weeks. Micro-dissected metastatic and primary tumors were analyzed for relative gene expression by real-time quantitative polymerase chain reaction. The clinical protocol prospectively identified the molecular targets of interest that would be tested. Endpoints for the molecular analyses were correlation of median, first and third quartiles for relative gene expression of each target with response, time to treatment failure (TTF), and survival.

Results: Among 91 patients participating in this trial; 97% had colorectal cancer. The median number of prior chemotherapy regimens was 2, and most had prior 5-FU and irinotecan. In paired samples, median mRNA levels were significantly higher in metastatic versus primary tumor (-fold): TS (1.9), DPD (3.8), ERCC1 (2.1) and TP (1.6). A strong positive correlation was noted between DPD and TP mRNA levels in both primary ($r = 0.693$, $p < 0.0005$) and metastatic tissue ($r = 0.697$, $p < 0.00001$). There was an association between TS gene expression and responsive and stable disease: patients whose intratumoral TS mRNA levels were above the median value had significantly greater risk of early disease progression (43% vs 17%), but this did not translate into a significant difference in TTF. ERCC1 gene expression above the third quartile was associated with a shorter TTF (median 85 vs 162 days, $p = 0.046$). Patients whose TS mRNA levels in metastatic tumor tissue were below the median had a longer overall survival (median 417 vs 294 days, $p = 0.042$).

Conclusion: Target gene expression in primary tumor was significantly lower than that in paired metastatic tissue. High ERCC1 mRNA levels in metastatic tumor was associated with a shorter TTF. Lower expression of TS mRNA correlated with a lower chance of early PD with XelOX therapy and improved overall survival.

Background

It is estimated that about 153,000 new cases of colorectal cancer will be diagnosed in the U.S. in 2007 [1]. 5-fluorouracil (5-FU), floxuridine (FUDR), capecitabine (Xel), irinotecan, oxaliplatin (OX), cetuximab, panitumumab and bevacizumab are licensed in the U.S. for use in patients with colorectal cancer. Although each of these agents has clinical activity in patients with colorectal cancer, primary and acquired treatment resistance is common. Identification of molecular markers at either the intra-genic, chromosomal, mRNA or protein level that might predict whether colorectal cancer patients are likely to benefit from systemic therapy is a subject of intense investigation.

Prognostic markers provide information about the probable course of the disease in individual patients and the chances of remaining progression- or disease-free or surviving independent of the therapy received. Predictive markers reflect the chance of benefit from a specific therapeutic intervention. A variety of retrospective studies have been performed over the past decade to identify molecular markers that may correlate with metastatic colorectal cancer response to 5-FU-based therapy. Expression of individual genes at the mRNA level can be determined using real-time reverse transcription, polymerase chain reaction (RT-PCR). Immunohistochemistry (IHC), enzyme-linked immunosorbent assays, and measurement of enzymatic activity may be employed to assess protein content. Analysis of genetic polymorphisms is a more recent approach.

Many of these retrospective studies in advanced colorectal cancer used various schedules of 5-FU modulated by leucovorin. With the availability of new agents with different mechanisms of action, and second- and third-line salvage therapies, the question of whether a given molecular marker will retain prognostic and/or predictive value is a subject of ongoing investigation.

5-FU exerts cytotoxicity by both RNA- and DNA-directed mechanisms. With the use of leucovorin and continuous infusion schedules, the contribution of thymidylate synthase (TS) inhibition is thought to be of primary importance. Inhibition of TS by 5-fluoro-2'-deoxyuridine monophosphate leads to imbalance of deoxyribonucleotide triphosphate pools (depletion of thymidine triphosphate, accumulation of deoxyuridine triphosphate and deoxyadenosine triphosphate), interference with DNA synthesis and repair, and induction of DNA strand breaks [2]. A variety of pre-clinical studies have demonstrated that over-expression of TS is associated with insensitivity to 5-FU. Several clinical studies that analyzed TS protein or mRNA expression in metastatic tumor tissue support the observation that low TS expression predicts for response [3-11].

Thymidine phosphorylase (TP) catalyzes the reversible conversion of thymidine to thymine and 5-fluoro-2'-deoxyuridine to 5-FU, a process that is influenced by the availability of 2'-deoxyribose-1-phosphate [12]. TP, also known as platelet-derived endothelial growth factor, appears to play a role in angiogenesis. High intratumoral TP expression has been associated with insensitivity to 5-FU therapy in some pre-clinical and clinical studies [13-15]. Capecitabine is an oral 5-FU pro-drug that is converted to 5-FU through a series of three enzymatic steps; intracellular TP mediates the final conversion of 5'-doxy-5-fluorouridine (doxifluridine) to 5-FU. Over-expression of TP in preclinical models is associated with increased sensitivity to capecitabine or doxifluridine, due to greater conversion to 5-FU [16,17]. TP is over-expressed in many human tumors compared to adjacent normal tissue, providing a potential for selective formation of 5-FU in tumor tissue [18]. Several studies have reported a correlation between elevated TP (as measured by either IHC or ELISA) and benefit with doxifluridine therapy [19-21].

Dihydropyrimidine dehydrogenase (DPD) catalyzes the rate-limiting step in the catabolism of 5-FU. Several clinical studies suggest that over-expression of DPD in colorectal tumor tissue is associated with poor response to 5-FU-based therapy [15,22-24].

Mammalian excision repair cross complementing protein (ERCC1) is involved in the repair of damaged DNA [25-27], and acts in concert with xeroderma pigmentosum protein F (XPF, also known as ERCC4 protein), which stabilizes ERCC1. This polypeptide complex introduces an incision on the 5' side of a damaged site in DNA. The ERCC1/XPF endonuclease complex is implicated in the repair of two distinct types of lesions in DNA: nucleotide excision-repair (NER), which is involved in repair of ultraviolet-induced lesions and bulky chemical adducts, and recombination repair of inter-strand cross-links. Over-expression of ERCC1 has been reported in cisplatin-resistant cancer cell lines [27]. Clinical data suggests that high intratumoral levels of ERCC1 mRNA are associated with insensitivity to oxaliplatin-based therapy in colorectal cancer [10].

The main purpose of this study was to determine a recommended dose of Xel given in combination with a fixed dose of OX on an every 3-week schedule. Correlations between gene expression of four molecular targets in tumor tissue and clinical outcome was a secondary endpoint.

Methods

Subjects were participating in a Phase I study examining the feasibility of administering a fixed dose of oxaliplatin with escalating doses of capecitabine to patients with advanced colorectal or small bowel adenocarcinoma. The

protocol was approved by the Cancer Therapy Evaluation Program, NCI, and Institutional Review Boards of the NCI and the National Naval Medical Center. All patients gave written informed consent.

Oxaliplatin 130 mg/m² was infused by vein over 2-hours on day one, while a total daily dose of capecitabine ranging from 1,200 to 3,000 mg/m² was given in two divided doses on days 1–5 and 8–12 of a planned 21-day cycle. Therapy was continued until evidence of disease progression occurred, unacceptable toxicity developed, or the patient elected to withdraw. Assessment of disease status was planned every three cycles.

Biopsies of metastatic tumor were obtained in 81 patients. Samples were placed in RNALater[®] (Ambion Inc., Austin, TX, USA), stored at 4°C overnight, then stored at -30°C. Archival primary tumor tissue was available as formalin fixed, paraffin embedded (PFPE) tissue blocks in 27% of patients.

The clinical protocol document prospectively identified the four molecular targets of interest that would be tested, and specified that the median, first and third quartile values for relative gene expression for each of the four genes for all informative samples would be correlated with clinical outcome to see if there were any associations with greater or lesser mRNA expression.

Micro-dissection

The frozen samples that had been stored in RNALater[®] were embedded in optimal cutting temperature (OCT) compound (Secure Fanatic U.S.A., Inc., Torrance, CA) and cut into serial sections with a thickness of 20 μm. Sections were mounted on unbolted glass slides and stored at -80°C. For histology diagnosis, three representative sections, consisting of the beginning, middle and end of sectioning were stained with hematoxylin and eosin (H&E) by the standard method.

Before micro-dissection, sections were air-dried, fixed in 70% ethanol for 3 min and washed in water for 2 min. Afterwards, they were stained with nuclear fast red (NER, American MasterTech Scientific, Inc., Lodi, CA, USA) for 10 sec and again washed in water for 30 sec. Samples were then dehydrated in a stepwise manner with 70% ethanol, 95% ethanol and 100% ethanol for 30 sec each, followed by incubation in xylene for 5 min and complete air-drying. All H&E stained sections were evaluated by a pathologist. If the histology of the samples was homogeneous and contained more than 90% tumor tissue, samples were dissected from the slides using a scalpel. All other sections were selectively isolated by LCM (P.A.L.M. Microsystem, Leica, Wetzlar, Germany) according to the standard procedure [28].

The micro-dissected tissue was transferred to a reaction tube containing 400 μL of RNA lysis buffer.

RNA extraction

For extraction from FFPE specimens, the tissue samples to be extracted were placed in a 0.5 mL, thin walled tube containing 400 μL of 4 M dithiothreitol (DTT)-GITC/sarc (4 M guanidinium isothiocyanate, 50 mM Tris-HCl, pH 7.5, 25 mM EDTA) (Invitrogen; #15577-018). The samples were heated at 92°C for 30 min and then transferred to a 2 mL centrifuge tube. To the tissue suspensions were added 50 μL of 2 M sodium acetate, pH 4.0, followed by 600 μL of freshly prepared phenol/chloroform/isoamyl alcohol (250:50:1). The tubes were vortex-mixed for 15 sec, placed on ice for 15 min and then centrifuged at 13,000 rpm for 8 min in a chilled (8°C) centrifuge. The upper aqueous phase (250–350 μL) was carefully removed and placed in a 1.5 mL centrifuge tube. Glycogen (10 μL) and 300–400 μL of isopropanol were added and the samples vortex-mixed for 10–15 sec. The tubes were placed at -20°C for 30–45 min to precipitate the RNA. The samples were then centrifuged at 13,000 rpm for 7 min in a chilled (8°C) centrifuge. The supernatant was poured off and 500 μL of 75% ethanol was added. The tubes were centrifuged at 13,000 rpm for 6 min in a chilled (8°C) centrifuge. The supernatant was carefully poured off so as not to disturb the RNA pellet and the samples were quick-spun for 15 sec at 13,000 rpm. The remaining ethanol was removed with a 20 μL pipette and the samples air-dried for 15 min. The pellet was re-suspended in 50 μL of 5 mM Tris. For RNA extraction from OCT embedded samples, the above procedure was followed, except that the step involving heating at 92°C for 30 min was omitted.

cDNA Preparation and Real Time PCR Quantification of mRNA Expression

cDNA was prepared as previously described [29]. Quantitation of TS, TP, ERCC1 and DPD and an internal reference gene (β-actin) was done using a fluorescence based real-time detection method (ABI PRISM 7900 Sequence detection System, Perkin-Elmer (PE) Applied Biosystem, Foster City, CA, USA). The PCR reaction mixture consisted 1200 nM of each primer, 200 nM probe, 0.4 U of AmpliTaq Gold Polymerase, 200 nM each dATP, dCTP, dGTP, dTTP, 3.5 mM MgCl₂ and 1× Taqman[®] Buffer A containing a reference dye, to a final volume of 20 μl (all reagents from PE Applied Biosystems, Foster City, CA, USA). Cycling conditions were 50°C for 2 min, 95°C for 10 min, followed by 46 cycles at 95°C for 15 sec and 60°C for 1 min. The primers and probes used are shown in Table 1.

The cycle after which the fluorescent signal exceeds the threshold is referred to as the Ct. The Ct is inversely pro-

Table 1: Sequences of primers and probes

Target	Forward Primer	Reverse Primer
TS	GCCTCGGTGTGCCCTTCA	CCCGTTGATGTGCGCAAT
TP	CCTGCGGACGGAATCCT	TCCACGAGTTTCTTACTGAGAATGG
DPD	AGGACGCAAGGAGGGTTTG	GTCCGCCGAGTCCTTACTGA
ERCCI	GGGAATTTGGCGACGTAATTC	GCGGAGGCTGAGGAACGA
β -actin	TGAGCGGGCTACAGCTT	TCCTTAATGTACGCACGATTT
Target	Probe: 6-FAM-5', 3'-TAMRA	
TS	TCGCCAGCTACGCCCTGCTCA	
TP	CAGCCAGAGATGTGACAGCCACCG	
DPD	CAGTGCCTACAGTCTCGAGTCTGCCAGTG	
ERCCI	CACAGGTGCTCTGGCCCAGCACATA	
β -actin	ACCACCACGGCCGAGCGG	

portional to the amount of cDNA in the tube, i.e., a higher Ct value means that more PCR cycles are required to reach a certain level of detection. Gene expression values (relative mRNA levels) are expressed as ratios (differences between the Ct values) between the genes of interest and an internal reference gene (β -actin) that provides a normalization factor for the amount of RNA isolated from a specimen. Each cDNA sample had a duplicate genomic sample analyzed by real-time PCR without reverse transcription. If a fluorescent signal above the threshold was seen in the no reverse transcription specimen, the results from the corresponding cDNA were not deemed reliable. Each plate contained a reference cDNA sample to allow normalization for potential plate to plate variability.

Validation of the assay was performed with regard to RNA extraction and recovery, accuracy, precision, limits of quantitation and range. These studies followed GLP guidelines and employed Stratagene reference human RNA mix, pooled tissue homogenates derived from FFPE tissue sections and multiple sections of FFPE tumor sections from a variety of tumors. Assay precision was inferred from the variation in the replicate Ct values for all genes used, and had no more than 5.3% coefficient of variation (CV). The Delta Ct values derived from these Ct values showed a maximum %CV of 9.5%. This was expected, since the Delta Ct values reflect the variation in the Ct values of two genes, the target gene and its actin reference gene.

Statistical and Graphical Analysis

Statistical analyses were performed using SigmaStat for Windows Version 3.11 (Systat Software Inc., Richmond, CA, USA). The median, first and third quartile values for each molecular marker were determined using all informative samples. The distribution of response vs. stable disease vs. early progressive disease as a function of molecular marker expression was analyzed by the chi-square test, whereas differences in response plus stable disease vs. early progressive disease was by Fisher's exact test. The strength of association of two variables was determined by the Pearson product moment correlation. Analysis of progression-free survival was performed by log-rank. Overall survival was analyzed by the Gehan-Breslow method. Graphs were prepared using SigmaPlot for Windows version 9.0 (Systat Software, Inc., Chicago, IL).

Results

Patient Characteristics and Clinical Outcome

Ninety-one subjects participated in this clinical trial (Table 2). One patient withdrew after having a tumor biopsy performed, and did not receive any protocol therapy. Six additional patients are not assessable for response. Among 84 subjects who were considered assessable for response to protocol therapy, there were four complete and 14 partial responses (21%). Forty-five patients had stable disease (54%), while 21 (25%) experienced clinical or radiographic evidence of disease progression by the time of initial restaging after 3 cycles. For all

Table 2: Patient demographics (n = 91)

Median Age (Range)	56 yr (26–74)
Performance Status (ECOG)	
0	45
1	40
2	6
Male/Female	61/30
Primary Tumor Site	
colon	69
rectum	19
appendix	2
jejunum	1
Number Prior Chemotherapy Regimens	
0	4
1	40
2	37
3	10
Prior 5-fluoropyrimidine	87
Prior Irinotecan	73
Prior Radiation	19

91 subjects, the median time to treatment failure was 5.1 months, and the median survival was 10.9 months.

Tumor Tissue

Biopsies of metastatic tumor tissue were obtained in 81 subjects. Fifteen of these samples were not informative for any of the four targets of interest, either due to absence of tumor in the sample, or an insufficient quantity of tissue. The number of samples that were informative for each target was as follows: TS, 65; DPD, 63; TP, 64; ERCC1, 64. Archival paraffin-embedded formalin fixed tissue blocks from the primary tumor were available in 25 subjects. No tumor was seen in one of these. One additional subject

had a biopsy of a rectal primary that was stored in RNALater®. The median time from initial diagnosis to study entry in subjects who had both archival primary tumor tissue and metastatic tumor tissue was 671 days (25th%, 426; 75th%, 824).

Table 3 shows the results of the gene expression for the pre-selected molecular targets. There was much greater variability in the distribution of values for each molecular target in metastatic tissue: the ratio of the maximum to minimum values ranged from 24 to 95. In primary tumor tissue, in contrast, the ratio of maximum to minimum values for each target ranged from 9 to 14.

When mRNA expression was compared in paired samples of primary and metastatic tumor tissue, gene expression was significantly higher in metastatic tumor tissue for each molecular marker: TS, 1.9-fold; DPD, 3.8-fold; TP, 1.6-fold; ERCC1, 2.1-fold (Figure 1).

The strength of association between doublets of molecular markers was analyzed. In both primary and metastatic tumor tissue, there was a strong correlation between the expression of DPD and TP (Figure 2). No other significant correlations were observed.

Restaging computerized tomographic scans were planned after the first three cycles (nine weeks). Individual target gene expressions were stratified as above or below either the median, first or third quartile. The proportion of observations in the different categories that defined the contingency tables were analyzed by comparing complete and partial response (CR and PR) versus stable disease (SD) versus early progressive disease (PD, within the first 9 weeks), or CR plus PR plus SD versus early PD. The only association that appeared to be non-random was with TS (Table 4). Patients whose intra-tumor TS mRNA levels were above the median value had significantly greater risk of early disease progression (43% vs 17%). Subjects who

Table 3: Relative gene expression in tumor tissue (vs. β -actin)

Molecular Marker	TS	DPD	TP	ERCC1
Metastasis (No.)	65	63	64	64
Median (range)	3.91 (0.81–77.58)	1.62 (0.15–11.89)	5.64 (1.06–31.89)	2.17 (0.34–8.23)
25 th %, 75 th %	2.38, 6.31	0.92, 3.04	3.77, 10.34	1.48, 3.36
Primary (No.)	24	21	24	25
Median (range)	2.07 (0.5–4.49)	0.36 (0.15–1.41)	3.23 (0.71–10.02)	1.04 (0.34–3.28)
25 th %, 75 th %	1.26, 2.58	0.21, 0.55	1.54, 4.98	0.64, 1.55

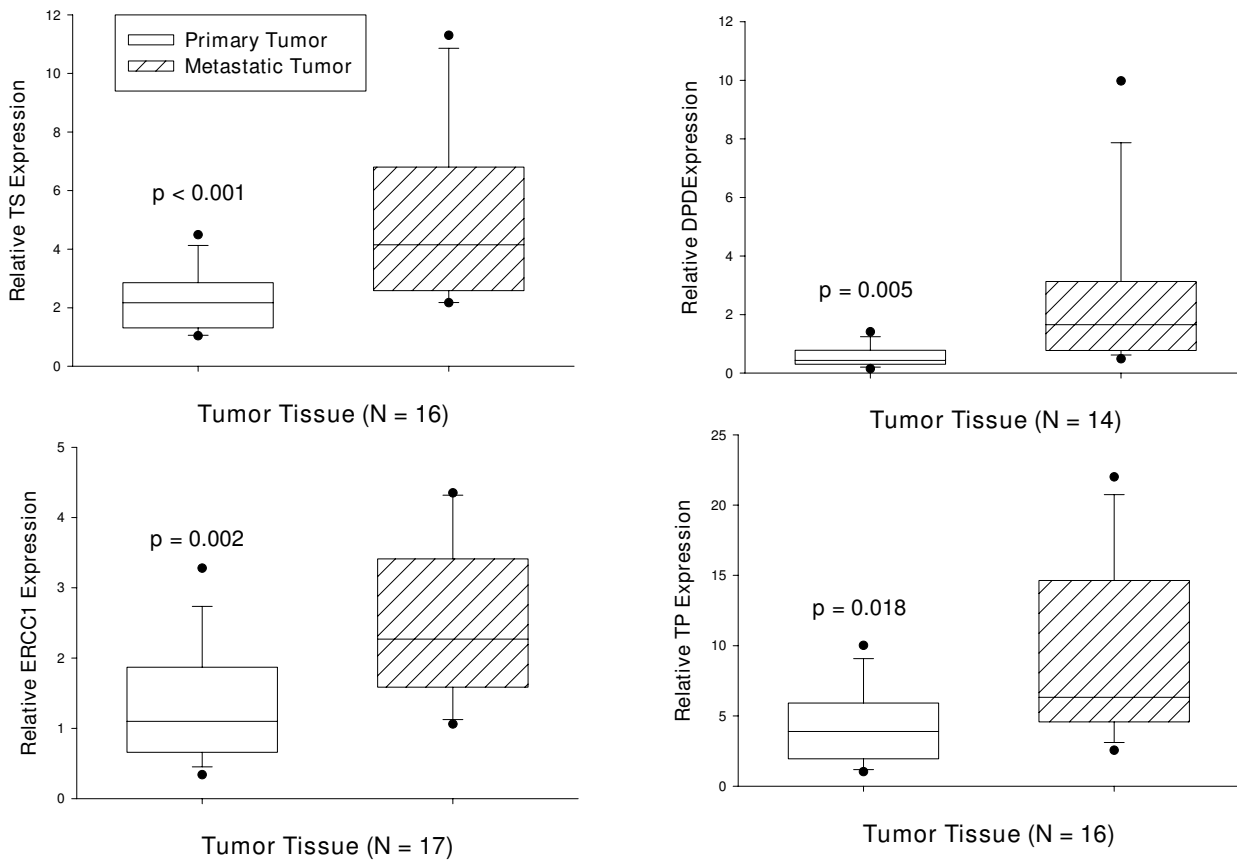


Figure 1
Gene expression in paired primary and metastatic tumor tissue samples. The data are shown in box-plot format; all outliers are shown. The p values are from a Wilcoxon signed rank test.

had very high intra-tumor ERCC1 expression tended to have an increased risk of early PD (47% vs 22%).

Because a major endpoint of this study was tolerability of the regimen, a primary endpoint was time to treatment failure, which was defined as the interval from enrollment on study to either documented disease progression or the date a patient withdrew from the study for unacceptable toxicity. Only two patients withdrew from study due to unacceptable toxicity accompanied by a decline in performance status. Neither patient had a restaging CT scan, so the date of progression cannot be determined. When individual molecular marker expression was analyzed as a possible predictive factor for TTF, those subjects whose metastatic tumor tissue had ERCC1 gene expression above the third quartile had a significantly shorter TTF of 77 days (Figure 3). If the two patients who withdrew for toxicity are excluded, the result did not appreciably change: those with ERCC1 gene expression above the third quartile was significantly shorter: median TTF 85 days vs 166 days (p =

0.017). Various combinations of molecular markers did not discriminate any apparent differences in TTF.

Overall survival from the on-study date was analyzed according to higher versus lower mRNA expression of individual targets. The only individual molecular marker that tended to distinguish those with worse or better survival was TS (Figure 4). The median survival in subjects whose metastatic tumor tissue had TS mRNA expression below the median was 123 days longer than those with TS expression above the median. Various combinations of molecular marker expression were analyzed (e.g. TS below median and ERCC1 below third quartile vs others), but none yielded stronger prognostic information than TS mRNA expression alone.

Discussion

The objective response rate was 21% in this heterogenous patient population with a median of two prior chemotherapy regimens. mRNA expression of TS, DPD, ERCC1

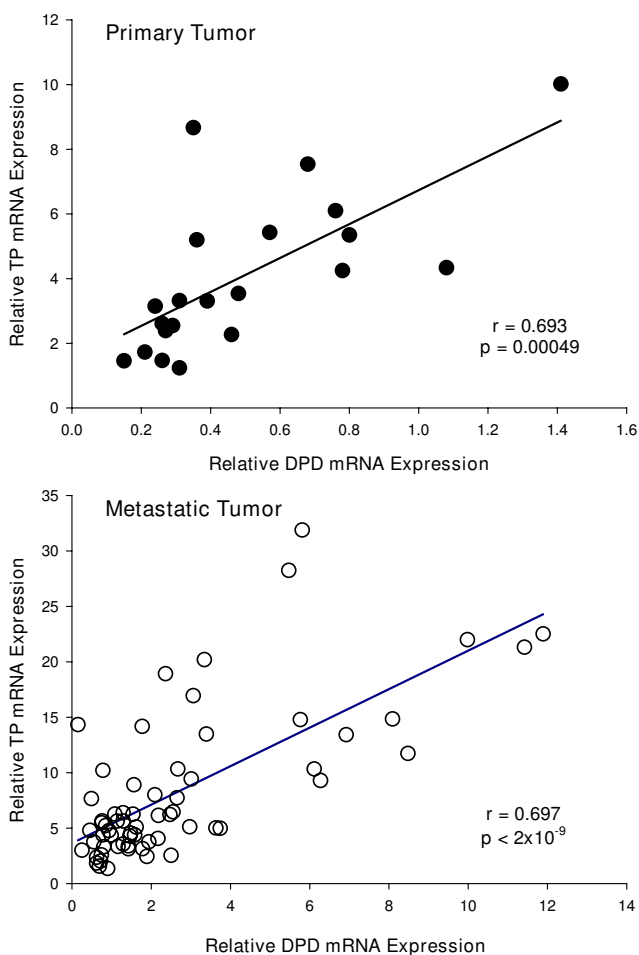


Figure 2
Correlation between DPD and TP gene expression in either primary or metastatic tumor tissue. The Pearson product moment correlation coefficient and p-value are shown.

and ERCC1 in paired metastatic and primary tumor was significantly higher in metastatic tissue. This may in part be explained by the long interval from initial diagnosis to study entry (median 671 days). It is acknowledged that mRNA from primary tissue was derived from formalin fixed paraffin-embedded samples while metastatic tissues were immediately placed in RNA later and frozen. Frozen tissues typically generate more RT-PCR product than FFPE tissues [30]. However, normalization of gene expression to β -actin gene expression in the same tissue should correct for any relative differences in efficiency of RT-PCR product.

In both metastatic and primary tissue, there was a significant correlation between DPD and TP mRNA expression. The genes encoding DPD and TP are located on chromosomes 1p22 and 22q13, respectively. Other investigators

Table 4: Gene expression and disease control with XelOX therapy

	CR+PR+SD	PD	total
TS \leq median	25	5	30
TS $>$ median	17	13	30
ERCCI \leq 75 th %	35	10	45
ERCCI $>$ 75 th %	8	7	15

Six subjects were not assessable for response; therefore, only 60 subjects each with informative TS and ERCCI samples from metastatic tumor tissue are included in the analysis between gene expression and disease control. The Fisher exact test p-value was 0.047 for TS and 0.099 for ERCCI.

have also reported a significant correlation between mRNA levels of DPD and TP in both primary and metastatic tumor tissue [31,32]. Further studies would be needed to see if these genes are coordinately regulated.

Due to the small sample size and heterogeneity of the patient population, the results and conclusions of this analysis must be interpreted with caution. It appeared that TS mRNA expression below or above the median tended to distinguish those subjects who achieved either objective response or stable disease vs. those who had early disease progression within 9 weeks of enrolling on protocol. Subjects whose metastatic tumor tissue had ERCCI

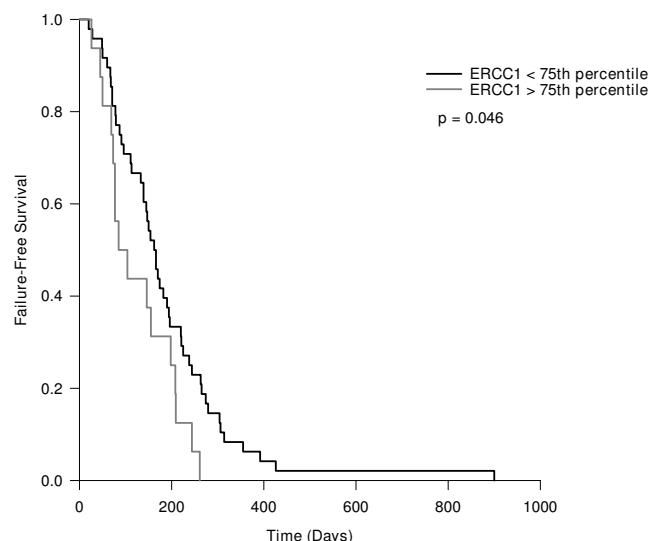


Figure 3
Time to treatment failure as a function of ERCCI gene expression. The median TTF was 162 days in those with ERCCI expression $<$ 3rd quartile (n = 46), compared to 85 days in those with expression $>$ 3rd quartile (n = 16). The log-rank p-value is shown.

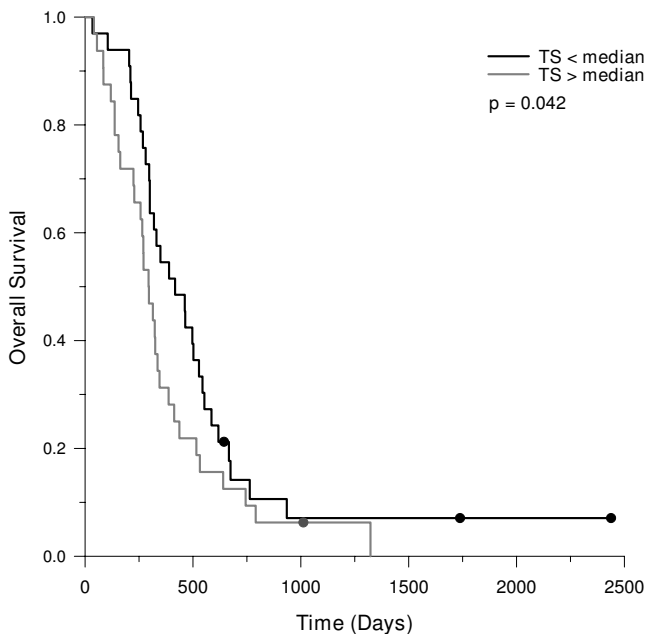


Figure 4
Survival from on-study date as a function of TS gene expression. The median survival was 417 days in those with TS expression < median (n = 33), compared to 294 days in those with expression > median (n = 32). The Gehan-Breslow p value is shown.

mRNA expression greater than the 3rd quartile had a shorter median time to treatment failure (12 vs 23 weeks). It is assumed that higher TS and ERCC1 gene expression translates into greater protein expression and enzymatic activity.

The lack of importance of TS and TP gene expression in predicting TTF may possibly be explained by the trial design which involved dose escalation of Xel; some subjects received lower Xel doses than that eventually recommended. In this cohort, we observed that high DPD mRNA levels accompanied high TP mRNA levels. It is possible that the theoretical benefit of high TP expression, which is expected to lead to increased intracellular release of 5-FU, is offset by increased catabolism of 5-FU.

In summary, in this trial involving predominantly pre-treated colorectal cancer patients, higher levels of TS mRNA expression appeared to have a predictive value in identifying those subjects with a greater probability of early disease progression during treatment with XelOX. Subjects whose metastatic tumor tissue had TS mRNA expression below the median tended to have longer median survival by about 18 weeks. Since TS mRNA expression did not correlate with improved TTF, low TS

expression in this study may be more of a prognostic than a predictive factor. Information on subsequent therapies is not available. The importance of gene expression of pertinent 5-FU-critical targets may be offset with combination therapy and the availability of salvage regimens. For example, high TS tumor expression does not preclude response to 5-FU given in combination with irinotecan [33,34].

Finally, there has been some discordance in reports concerning expression of various tumor markers in paired primary and metastatic disease. Our observation that the expression of these four tumor markers in metastatic tissue was significantly higher than the primary tumor in the setting of a relatively long interval between obtaining the specimens (1.8 years) highlights the importance of specifying the interval between procurement of these tumor samples in published manuscripts.

Conclusion

Gene expression of TS, DPD, ERCC1 and ERCC1 in metastatic tissue was significantly higher than in primary tumor. High ERCC1 mRNA levels in metastatic tumor was associated with a shorter TTF. Lower expression of TS mRNA correlated with a lower chance of early PD with XelOX therapy and improved overall survival.

Competing interests

Kazumi Uchida has no financial or non-financial competing interests to declare.

Peter V. Danenberg has the following competing financial interests to declare: Holds shares of Response Genetics, Inc. There are no non-financial interests to declare.

Kathleen D. Danenberg has the following competing interests to declare: Receives salary from Response Genetics Inc. and holds shares of Response Genetics, Inc. There are no non-financial interests to declare.

Jean L. Grem has no financial or non-financial competing interests to declare.

Authors' contributions

KU carried out the analysis of the tumor tissue, including embedding the samples in OTC compound, microdissection, RNA extraction, cDNA preparation, and real-time PCR quantitation. PVD and KDD analyzed the results of the real-time quantitative PCR. JLG was the principal investigator of the clinical trial, performed the correlations of the gene expression data with various clinical endpoints, and wrote the manuscript. All authors read and approved the final manuscript.

Acknowledgements

The clinical trial was conducted at the National Naval Medical Center in Bethesda, MD by Dr. Grem when she was employed by the National Cancer Institute, Bethesda, MD. This work was supported by the Intramural Research Program of the Center for Cancer Research, National Cancer Institute, National Institutes of Health, Bethesda, MD, USA. The analyses of the clinical samples performed by Response Genetics, Inc were provided at no charge for this clinical trial.

References

- Jemal A, Siegal R, Ward E, Murray T, Xu J-Q, Thun MJ: **Cancer Statistics 2007**. *CA Cancer J Clin* 2007, **57**:43-66.
- Grem JL: **5-Fluoropyrimidines**. In *Cancer Chemotherapy and Biotherapy: Principles and Practice* Fourth edition. Edited by: Chabner BA, Longo DL. Philadelphia: Lippincott-Williams & Wilkins; 2006:125-179.
- Aschele C, Debernardis D, Casazza S, Antonelli G, Tunesi G, Baldo C, Lionetto R, Maley F, Sobrero A: **Immunohistochemical quantitation of thymidylate synthase expression in colorectal cancer metastases predicts for clinical outcome to fluorouracil-based chemotherapy**. *J Clin Oncol* 1999, **17**:1760-1970.
- Cascinu S, Aschele C, Barni S, Debernardis D, Baldo C, Tunesi G, Catalano V, Staccioli MP, Brenna A, Muretto P, Catalano G: **Thymidylate synthase protein expression in advanced colon cancer: correlation with the site of metastasis and the clinical response to leucovorin-modulated bolus 5-fluorouracil**. *Clin Cancer Res* 1999, **5**:1996-9.
- Davies MM, Johnston PG, Kaur S, Allen-Mersh TG: **Colorectal liver metastasis thymidylate synthase staining correlates with response to hepatic arterial floxuridine**. *Clin Cancer Res* 1999, **5**:325-328.
- Corsi DC, Ciaparrone M, Zannoni G, Mancini M, Cassano A, Specchia M, Pozzo C, Martini M, Barone C, Fong Y, Banerjee D, Klimstra D, Cordon-Cardo C, Bertino J, Kemeny N: **Predictive value of thymidylate synthase expression in resected metastases of colorectal cancer**. *Eur J Cancer* 2002, **38**:527-534.
- Gonen M, Hummer A, Zervoudakis A, Danenberg K, Baranda J, Groshen S, Boswell W, Metzger R, Tan M, Danenberg PV: **Thymidylate synthase expression in hepatic tumors is a predictor of survival and progression in patients with resectable metastatic colorectal cancer**. *J Clin Oncol* 2003, **21**:406-412.
- Leichman CG, Lenz HJ, Leichman L, Danenberg K, Baranda J, Groshen S, Boswell W, Metzger R, Tan M, Danenberg PV: **Quantitation of intratumoral thymidylate synthase expression predicts for disseminated colorectal cancer response and resistance to protracted-infusion fluorouracil and weekly leucovorin**. *J Clin Oncol* 1997, **15**:3223-3229.
- Farrugia DC, Ford HE, Cunningham D, Danenberg KD, Danenberg PV, Brabender J, McVicar AD, Aherne GW, Hardcastle A, McCarthy K, Jackman AL: **Thymidylate synthase expression in advanced colorectal cancer predicts for response to raltitrexed**. *Clin Cancer Res* 2003, **9**:792-801.
- Shirota Y, Stoehlmacher J, Brabender J, Xiong YP, Uetake H, Danenberg KD, Groshen S, Tsao-Wei DD, Danenberg PV, Lenz HJ: **ERCC1 and thymidylate synthase mRNA levels predict survival for colorectal cancer patients receiving combination oxaliplatin and fluorouracil chemotherapy**. *J Clin Oncol* 2001, **19**:4298-4304.
- Etienne MC, Chazal M, Laurent-Puig P, Magné N, Rosty C, Formento JL, Francoual M, Formento P, Renée N, Chamorey E, Bourgeon A, Seitz JF, Delpero JR, Letoublon C, Pezet D, Milano G: **Prognostic value of tumoral thymidylate synthase and p53 in metastatic colorectal cancer patients receiving fluorouracil-based chemotherapy: phenotypic and genotypic analyses**. *J Clin Oncol* 2002, **20**:2832-2843.
- Brown NS, Bicknell R: **Thymidine phosphorylase, 2-deoxy-D-ribose and angiogenesis**. *Biochem J* 1998, **334**:1-8.
- Metzger R, Danenberg K, Leichman CG, Salonga D, Schwartz EL, Wadler S, Lenz HJ, Groshen S, Leichman L, Danenberg PV: **High basal level gene expression of thymidine phosphorylase (platelet-derived endothelial cell growth factor) in colorectal tumors is associated with non-response to 5-fluorouracil**. *Clin Cancer Res* 1998, **4**:2371-2376.
- Ackland SP, Peters GJ: **Thymidine phosphorylase: its role in sensitivity and resistance to anticancer drugs**. *Drug Resist Updat* 1999, **2**:205-214.
- Salonga D, Danenberg KD, Johnson M, Metzger R, Groshen S, Tsao-Wei DD, Lenz HJ, Leichman CG, Leichman L, Diasio RB, Danenberg PV: **Colorectal tumors responding to 5-fluorouracil have low gene expression levels of dihydropyrimidine dehydrogenase, thymidylate synthase, and thymidine phosphorylase**. *Clin Cancer Res* 2000, **6**:1322-1327.
- Morita T, Matsuzaki A, Tokue A: **Enhancement of sensitivity to capecitabine in human renal carcinoma cells transfected with thymidine phosphorylase cDNA**. *Int J Cancer* 2001, **92**:451-456.
- Ishikawa T, Sekiguchi F, Fukase Y, Sawada N, Ishitsuka H: **Positive correlation between the efficacy of capecitabine and doxifluridine and the ratio of thymidine phosphorylase to dihydropyrimidine dehydrogenase activities in tumors in human cancer xenografts**. *Cancer Res* 1998, **58**:685-690.
- Mori K, Hasegawa M, Nishida M, Toma H, Fukuda M, Kubota T, Nagasue N, Yamana H, Hirakawa YS, Chung K, Ikeda T, Takasaki K, Oka M, Kameyama M, Toi M, Fujii H, Kitamura M, Murai M, Sasaki H, Ozono S, Makuuchi H, Shimada Y, Onishi Y, Aoyagi S, Mizutani K, Ogawa M, Nakao A, Kinoshita H, Tono T, Imamoto H, Nakashima Y, Manabe T: **Expression levels of thymidine phosphorylase and dihydropyrimidine dehydrogenase in various human tumor tissues**. *Int J Oncol* 2000, **17**:33-38.
- Sadahiro S, Otani Y, Oya K, Ike H, Shimada H, Yamaguchi S, Hiki Y, Fujita H, Mitomi T: **Thymidine phosphorylase expression and effect of doxifluridine: a phase II study**. *Oncol Rep* 2001, **8**:753-758.
- Nishimura G, Terada I, Kobayashi T, Ninomiya I, Kitagawa H, Fushida S, Fujimura T, Kayahara M, Shimizu K, Ohta T, Miwa K: **Thymidine phosphorylase and dihydropyrimidine dehydrogenase levels in primary colorectal cancer show a relationship to clinical effects of 5'-deoxy-5-fluorouridine as adjuvant chemotherapy**. *Oncol Rep* 2002, **9**:479-482.
- Meropol NJ, Gold PJ, Diasio RB, Andria M, Dhami M, Godfrey T, Kovatich AJ, Lund KA, Mitchell E, Schwarting R: **Thymidine phosphorylase expression is associated with response to capecitabine plus irinotecan in patients with metastatic colorectal cancer**. *J Clin Oncol* 2006, **24**:4069-4077.
- Araki Y, Isomoto H, Shirouzu K: **Dihydropyrimidine dehydrogenase activity and thymidylate synthase level are associated with response to 5-fluorouracil in human colorectal cancer**. *Kurume Med J* 2001, **48**:93-98.
- Oi K, Makino M, Ozaki M, Yamane N, Nakamura S, Ikeguchi M, Kaibara N: **Immunohistochemical dihydropyrimidine dehydrogenase expression is a good prognostic indicator for patients with Dukes' C colorectal cancer**. *Anticancer Res* 2004, **24**:273-279.
- Tsuji T, Sawai T, Takeshita H, Nakagoe T, Hidaka S, Atsushi N, Yamaguchi H, Yasutake T, Nagayasu T, Tagawa Y: **Tumor dihydropyrimidine dehydrogenase in stage II and III colorectal cancer: low level expression is a beneficial marker in oral-adjuvant chemotherapy, but is also a predictor for poor prognosis in patients treated with curative surgery alone**. *Cancer Lett* 2004, **204**:97-104.
- Laat WL, Jaspers NCG, Hoeijmakers JHJ: **Molecular mechanism of nucleotide excision repair**. *Genes Develop* 1999, **13**:768-785.
- McHugh PJ, Spanswick VJ, Hartley JA: **Repair of DNA interstrand crosslinks: molecular mechanisms and clinical relevance**. *Lancet Oncol* 2001, **2**:483-490.
- Reed E: **Platinum-DNA adduct, nucleotide excision repair and platinum based anti-cancer chemotherapy**. *Cancer Treat Rev* 1998, **24**:331-334.
- Bonner RF, Emmert-Buck M, Cole K, Pohida T, Chuaqui R, Goldstein S, Liotta LA: **Laser capture microdissection: molecular analysis of tissue**. *Science* 1997, **278**:1481-1483.
- Lord RV, Salonga D, Danenberg KD, Peters JH, Kiyabu M, Park JM, Danenberg PV: **Telomerase reverse transcriptase expression is increased early in the Barrett's metaplasia-dysplasia-adenocarcinoma sequence**. *J Gastrointest Surg* 2000, **4**:135-142.
- Goldsworthy SM, Stockton PS, Trempus CS, Foley JF, Maronpot RR: **Effects of fixation on RNA extraction and amplification from laser capture microdissected tissue**. *Mol Carcinogen* 1999, **25**:86-91.
- Inokuchi M, Uetake H, Shirota Y, Yamada H, Tajima M, Sugihara K: **Gene expression of 5-fluorouracil metabolic enzymes in pri-**

mary colorectal cancer and corresponding liver metastasis.
Cancer Chemother Pharmacol 2004, **53**:391-396.

32. Kuramochi H, Hayashi K, Uchida K, Miyakura S, Shimizu D, Vallboehmer D, Park S, Danenberg KD, Takasaki K, Danenberg PV: **5-fluorouracil related gene expression levels in primary colorectal cancer and corresponding liver metastasis.** *Int J Cancer* 2006, **119**:522-6.
33. Paradiso A, Xu J, Mangia A, Chiriatti A, Simone G, Zito A, Montemurro S, Giuliani F, Maiello E, Colucci G: **Topoisomerase-I, thymidylate synthase primary tumour expression and clinical efficacy of 5-FU/CPT-11 chemotherapy in advanced colorectal cancer patients.** *Int J Cancer* 2004, **111**:252-258.
34. Ichikawa W, Takahashi T, Suto K, Yamashita T, Nihei Z, Shirota Y, Shimizu M, Sasaki Y, Hirayami R: **Thymidylate synthase predictive power is overcome by irinotecan combination therapy with S-I for gastric cancer.** *Br J Cancer* 2004, **91**:1245-1250.

Pre-publication history

The pre-publication history for this paper can be accessed here:

<http://www.biomedcentral.com/1471-2407/8/386/prepub>

Publish with **BioMed Central** and every scientist can read your work free of charge

"BioMed Central will be the most significant development for disseminating the results of biomedical research in our lifetime."

Sir Paul Nurse, Cancer Research UK

Your research papers will be:

- available free of charge to the entire biomedical community
- peer reviewed and published immediately upon acceptance
- cited in PubMed and archived on PubMed Central
- yours — you keep the copyright

Submit your manuscript here:
http://www.biomedcentral.com/info/publishing_adv.asp

