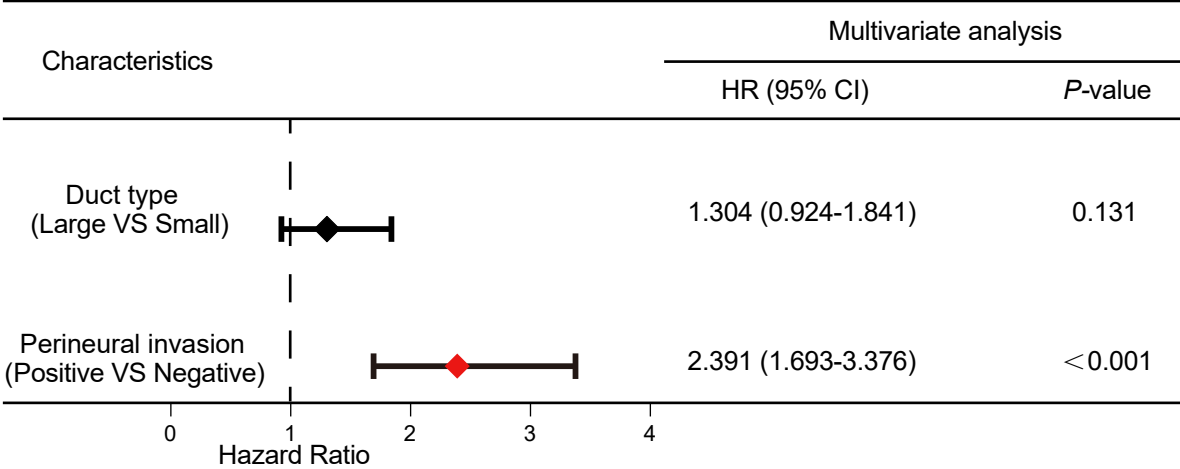
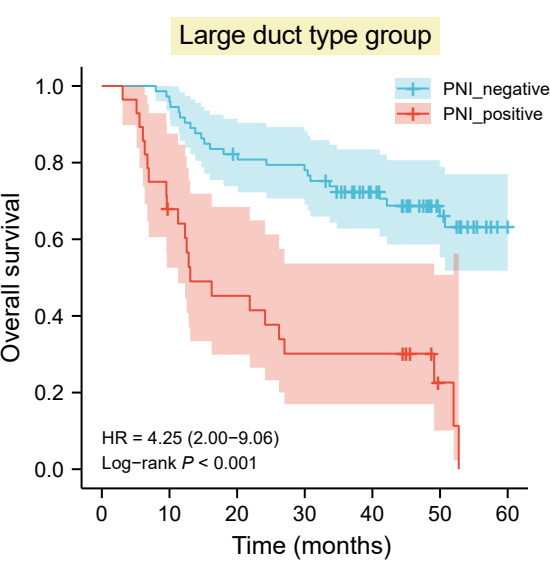


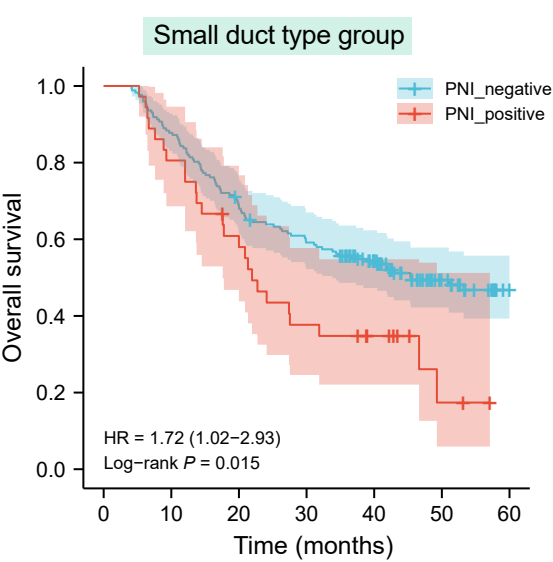
a



b



c



Supplementary figure1:

- a. Multivariate analysis of duct type and PNI in TMA cohort.
- b. K-M analysis of OS between patients with PNI and without PNI in the large duct type group of TMA cohort (HR=4.25, $P < 0.001$).
- c. K-M analysis of OS between patients with PNI and without PNI in the small duct type group of TMA cohort (HR=1.72, $P=0.015$).