

OPEN ACCESS

Full open access to this and thousands of other papers at <http://www.la-press.com>.

Evaluating the Association Between Insulin-Like Growth Factor-1 Values and Short-Term Survival Rates Following Acute Myocardial Infarction

Shokoufeh Hajsadeghi¹, Hamed Mohseni², Masoud Moradi², Elham Rahmani², Kiarash Kordshakeri², Mohammad Javad Manteghi², Masoud Tokazebani² and Reza Mollahoseini³

¹Assistant Cardiology Professor, Rasoul Akram Medical Centre, Tehran, Iran. ²Medical Student Research Committee, Faculty of Medicine, Tehran University of Medical Sciences, Tehran, Iran. ³Assistant Neurosurgery Professor, Firoozgar Medical Centre, Tehran, Iran. Corresponding author email: masoud_moradi65@yahoo.com

Abstract

Backgrounds: In recent years, low levels of Insulin-like Growth Factor-1 (IGF-1) have been suggested to be associated with higher risks of developing heart failure and higher long-term mortality rates following Acute Myocardial Infarction (AMI). However, the effect of IGF-1 levels on short-term survival has been rarely studied. In this study we aimed to assess any possible association between serum IGF-1 concentration following AMI and short-term survival rates.

Methods: In this study, serum total IGF-1 levels were measured in 56 patients within 24 hours following AMI and were compared to 56 individuals with no cardiovascular disease. Patients were followed up to death or discharge from hospital (median = 6 days) and survival curves were compared based on median IGF-1 value.

Results: Mean (\pm SD) of serum IGF-1 levels were 232.73 ng/ml (\pm 81.74) and 211.00 ng/ml (\pm 58.22) in survived and expired patients respectively and the difference was not statistically significant (P value = 0.501). The difference between survival curves was also not statistically significant (P value = 0.246).

Conclusion: According to findings of this study, serum total IGF-1 concentration does not seem to be associated with short-term survival rates.

Keywords: IGF-1, myocardial infarction, short term survival

Clinical Medicine Insights: Cardiology 2011;5 7–11

doi: [10.4137/CMC.S6629](https://doi.org/10.4137/CMC.S6629)

This article is available from <http://www.la-press.com>.

© the author(s), publisher and licensee Libertas Academica Ltd.

This is an open access article. Unrestricted non-commercial use is permitted provided the original work is properly cited.



Introduction

Insulin-like growth factor-1 (IGF-1) is involved in the growth and development of many cells,¹⁻⁵ including cardiac myocyte.⁶ In addition, it has been found to interfere with apoptosis and cellular death in various tissues⁷⁻⁹ including myocardial cells.^{10,11} IGF-1 is synthesized mainly by the liver and kidneys but also, in a paracrine and autocrine way, by endothelial and vascular smooth muscle cells and by cardiac myocytes.^{1,2}

In recent years, low levels of IGF-1 have been suggested to increase the risk of developing cardiovascular disease particularly myocardial infarction.^{12,13} Moreover, data analyses based on Framingham and Rotterdam studies have reported low levels of IGF-1 to be associated with the risk of developing heart failure.^{14,15} Further studies have emphasized the stimulating effect of insulin like growth factors on left ventricular remodeling and long term survival following myocardial infarction.^{11,13,16,17}

However, the effect of IGF-1 on short term survival in the acute phase of Acute Myocardial Infarction (AMI) has rarely been studied. The aim of this study was to evaluate serum IGF-1 levels following AMI and assess its possible association with short-term survival rates.

Methods

In this cross sectional analytic study from March 2008 to July 2009, of 167 patients referred to the Coronary Care Unit of Rasoul Akram Hospital for management of suspected myocardial infarction, 111 patients were excluded (70 patients didn't provide informed consent, 15 had hypertension, 10 had BMI > 30, 5 patients had acromegaly and 11 patients had chronic inflammatory disease). This left a study population with following inclusion criteria: age <80 years, AMI diagnosed by WHO criteria and LVEF on admission >45%.

Subjects who were investigated as the control group had normal EKG without any history of chest pain or diabetes mellitus and were selected from patients admitted to Rasul Akram Hospital for ophthalmic problems. They did not consume any drugs which could interact with IGF-1.

All participants gave written informed consent for inclusion in the study. The study protocol was approved by the Ethics Committee of the Iran University of Medical Sciences (Tehran, Islamic Republic of Iran).

Blood Sampling

A 5-ml blood sample was achieved from all patients within 24 hours of CCU admission, and centrifuged. Then serum was separated and sent for measurement of IGF-I. Concentration of IGF-1 was evaluated using radioimmunoassay. The normal range of this assay is 107 ng/ml to 310 ng/ml. We also measured fasting blood sugar and lipid profile on the day after admission.

Patients were divided into low and high IGF-1 groups, using median concentration of IGF-1 as the cut-point. All patients were followed until they were discharged from hospital or expired.

Statistical analyses

The Student's T-test was used for comparison of IGF-1 concentration between patients and control groups. Survival curves were constructed by the Kaplan-Meier method and compared by log-rank test. Data are mean \pm SD. $P < 0.05$ was considered significant. All tests were done with SPSS 16.0 (Statistical Package for Social Sciences) for Microsoft Windows.

Results

A total of 56 patients with a mean (\pm SD) age of 58.53 (\pm 11.68) were enrolled to the study. Table 1 shows baseline characteristics of the MI affected group. Serum IGF-1 levels of 56 healthy controls aged 60.12 (\pm 6.16) was also measured as an estimate of normal IGF-1 values.

Comparing AMI affected patients and control group, mean (\pm SD) levels of serum IGF-1 were 230.02 ± 79 ng/ml and 307.46 ± 64 ng/ml respectively and the difference was statistically significant (P value < 0.001) (Fig. 1).

Among the patients, seven died of cardiovascular events. Three patients expired on the first day of admission, one on the second day, two on the third day and one on the fourth day. Table 2 compares a

Table 1. Baseline characteristics of MI affected patients.

Age (\pm SD)	58.53 (\pm 11.68)
Male/female	41/15
Diabetes	11 (19.6%)
Hypertension	14 (25%)
Hyperlipidemia	16 (28.6%)
ST-/non ST-elevation MI	45/11
LV ejection fraction (%) (\pm SD)	54.21 (\pm 4.60)

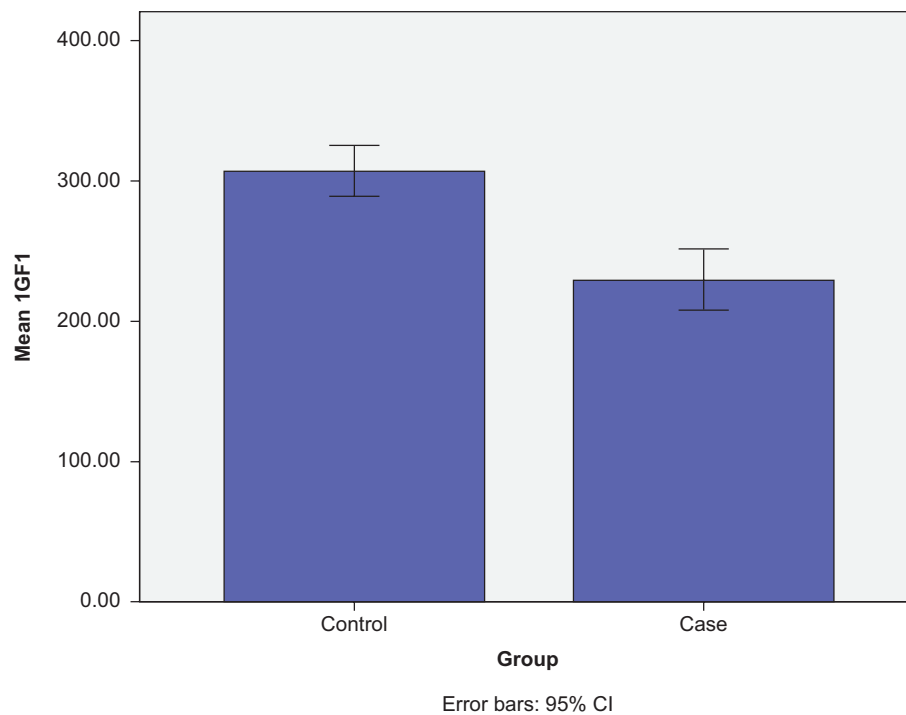


Figure 1. Mean IGF-1 levels (ng/ml) in control and case groups.

number of cardiovascular risk factors between this group and surviving patients, revealing statistical significance for none of the variables.

No statistical significance could be found in the correlation between levels of IGF-1 and duration of hospitalization ($P = 0.086$). Mean IGF-1 levels were 232.73 ng/ml (± 81.74) and 211.00 ng/ml (± 58.22) in survived and expired patients respectively and the difference was not statistically significant (P value = 0.501).

Survival curves were constructed according to the median value of serum IGF-1 in the first 24 hours

following acute myocardial infarction and are shown in Figure 2. The difference between curves was also not statistically significant (P value = 0.246).

Discussion

In this study, IGF-1 levels in the first 24 hours following acute myocardial infarction were found to be lower in the comparison with the control group. Event analysis was also performed to detect any possible difference of survival curves between higher and lower levels of IGF-1 while the analysis did not demonstrate a statistically significant distinction.

Table 2. Comparison of baseline characteristics between survivors and expired patients.

	Survivors (n = 49)	Expired patients (n = 7)	P value
Age (\pm SD)	58.04 \pm 11.74	62 \pm 11.57	0.407
Male/female	36/13	5/2	0.911
Diabetes	10 (20.4%)	1 (14.3%)	0.809
Hypertension	12 (24.5%)	2 (28.6%)	0.820
Fasting Blood Sugar (FBS)	114.73 \pm 34.89	117.66 \pm 38.97	0.848
LDL (mmol/lit)	108.95 \pm 40.07	108.83 \pm 29.08	0.994
HDL (mmol/lit)	38.40 \pm 10.45	39.50 \pm 11.44	0.812
TG (mmol/lit)	148.42 \pm 74.97	128.33 \pm 40.68	0.524
ST-/non ST-elevation MI	41/8	4/3	0.128
LV ejection fraction (\pm SD)	54.40 \pm 4.60	52.85 \pm 4.74	0.409

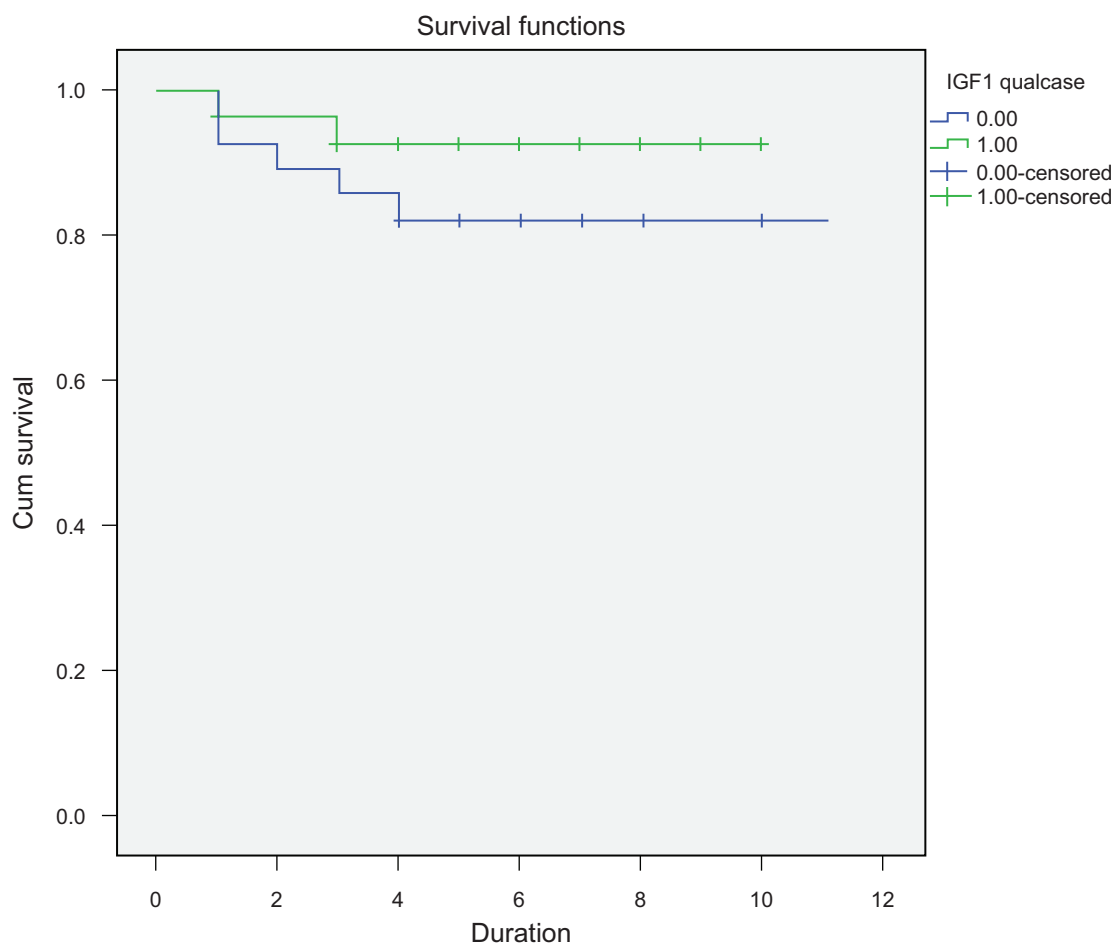


Figure 2. Survival: long rank P value = 0.246.

Previous studies have also documented a decrease in IGF-1 levels following MI.^{12,13,18} These reduced levels have been shown to return to control level within one month and cytokine reactions are assumed to be responsible for this reduction.¹⁸ Besides these findings, previous reports have also documented lower levels of IGF-1 to be associated with higher risks of developing heart failure and higher long term mortality rates following acute myocardial infarction.^{14–17}

Unlike our study, a study published in 2008¹⁸ reported significant difference in 90-day survival rates according to the median value of IGF-1. As the sample size of the mentioned study and our study's are very close to each other (54 and 56), sample size is very unlikely to be the cause of this mismatch. Instead, there is methodological difference between these two studies. The study followed patients for longer and reported 90-day survival while we followed them up to the time of discharge. Thus it might be possible that the

other study reports sub-acute survival instead of acute survival rates.

In conclusion, we did not detect any significant role for serum IGF-1 levels in short-term survival of MI affected patients in the acute phase of their disease. As there is disagreement between the results of this study and a previous study, addressing a similar question but with a different methodology and definition of short-time survival, further studies are suggested to assess the compact of IGF-1 on short-term mortality rates in which the definition of “short-term” should be carefully determined.

Disclosure

This manuscript has been read and approved by all authors. This paper is unique and is not under consideration by any other publication and has not been published elsewhere. The authors and peer reviewers of this paper report no conflicts of interest. The authors



confirm that they have permission to reproduce any copyrighted material.

References

1. Ohlsson C, Mohan S, Sjogren K, et al. The role of liver-derived insulin-like growth factor-I. *Endocr Rev*. 2009 Aug;30(5):494–535.
2. Sjogren K, Jansson JO, Isaksson OG, Ohlsson C. A transgenic model to determine the physiological role of liver-derived insulin-like growth factor I. *Minerva Endocrinol*. 2002 Dec;27(4):299–311.
3. Sjogren K, Jansson JO, Isaksson OG, Ohlsson C. A model for tissue-specific inducible insulin-like growth factor-I (IGF-I) inactivation to determine the physiological role of liver-derived IGF-I. *Endocrine*. 2002 Dec;19(3):249–56.
4. Sussenbach JS. The gene structure of the insulin-like growth factor family. *Prog Growth Factor Res*. 1989;1(1):33–48.
5. Zapf J, Froesch ER, Humbel RE. The insulin-like growth factors (IGF) of human serum: chemical and biological characterization and aspects of their possible physiological role. *Curr Top Cell Regul*. 1981;19:257–309.
6. Sacca L, Cittadini A, Fazio S. Growth hormone and the heart. *Endocr Rev*. 1994 Oct;15(5):555–73.
7. Chun SY, Billig H, Tilly JL, Furuta I, Tsafirri A, Hsueh AJ. Gonadotropin suppression of apoptosis in cultured preovulatory follicles: mediatory role of endogenous insulin-like growth factor I. *Endocrinology*. 1994 Nov;135(5):1845–53.
8. Chun SY, Eisenhauer KM, Minami S, Billig H, Perlas E, Hsueh AJ. Hormonal regulation of apoptosis in early antral follicles: follicle-stimulating hormone as a major survival factor. *Endocrinology*. 1996 Apr;137(4):1447–56.
9. Harrington EA, Bennett MR, Fanidi A, Evan GI. c-Myc-induced apoptosis in fibroblasts is inhibited by specific cytokines. *EMBO J*. 1994 Jul 15;13(14):3286–95.
10. Buerke M, Murohara T, Skurk C, Nuss C, Tomaselli K, Lefer AM. Cardioprotective effect of insulin-like growth factor I in myocardial ischemia followed by reperfusion. *Proc Natl Acad Sci U S A*. 1995 Aug 15;92(17):8031–5.
11. Li Q, Li B, Wang X, et al. Overexpression of insulin-like growth factor-1 in mice protects from myocyte death after infarction, attenuating ventricular dilation, wall stress, and cardiac hypertrophy. *J Clin Invest*. 1997 Oct 15;100(8):1991–9.
12. Friberg L, Werner S, Eggertsen G, Ahnve S. Growth hormone and insulin-like growth factor-1 in acute myocardial infarction. *Eur Heart J*. 2000 Sep;21(18):1547–54.
13. Lee WL, Chen JW, Ting CT, Lin SJ, Wang PH. Changes of the insulin-like growth factor I system during acute myocardial infarction: implications on left ventricular remodeling. *J Clin Endocrinol Metab*. 1999 May;84(5):1575–81.
14. Bleumink GS, Rietveld I, Janssen JA, et al. Insulin-like growth factor-I gene polymorphism and risk of heart failure (the Rotterdam Study). *Am J Cardiol*. 2004 Aug 1;94(3):384–6.
15. Vasan RS, Sullivan LM, D'Agostino RB, et al. Serum insulin-like growth factor I and risk for heart failure in elderly individuals without a previous myocardial infarction: the Framingham Heart Study. *Ann Intern Med*. 2003 Oct 21;139(8):642–8.
16. Andreassen M, Kistorp C, Raymond I, et al. Plasma insulin-like growth factor I as predictor of progression and all cause mortality in chronic heart failure. *Growth Horm IGF Res*. 2009 Dec;19(6):486–90.
17. Watanabe S, Tamura T, Ono K, et al. Insulin-like growth factor axis (insulin-like growth factor-I/insulin-like growth factor-binding protein-3) as a prognostic predictor of heart failure: association with adiponectin. *Eur J Heart Fail*. 2010 Nov;12(11):1214–22.
18. Yamaguchi H, Komamura K, Choraku M, et al. Impact of serum insulin-like growth factor-1 on early prognosis in acute myocardial infarction. *Intern Med*. 2008;47(9):819–25.

Publish with Libertas Academica and every scientist working in your field can read your article

“I would like to say that this is the most author-friendly editing process I have experienced in over 150 publications. Thank you most sincerely.”

“The communication between your staff and me has been terrific. Whenever progress is made with the manuscript, I receive notice. Quite honestly, I've never had such complete communication with a journal.”

“LA is different, and hopefully represents a kind of scientific publication machinery that removes the hurdles from free flow of scientific thought.”

Your paper will be:

- Available to your entire community free of charge
- Fairly and quickly peer reviewed
- Yours! You retain copyright

<http://www.la-press.com>