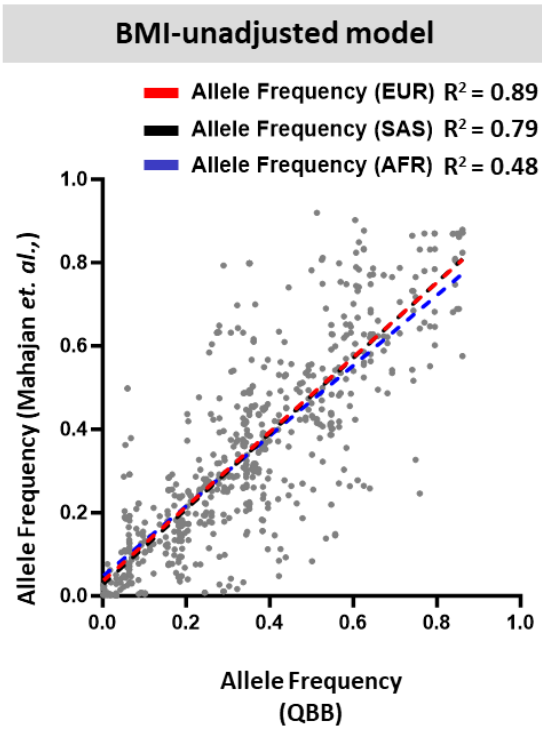
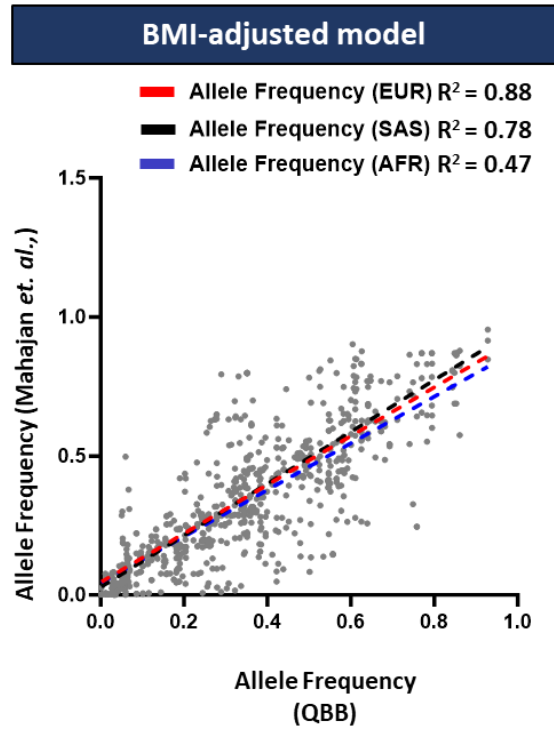
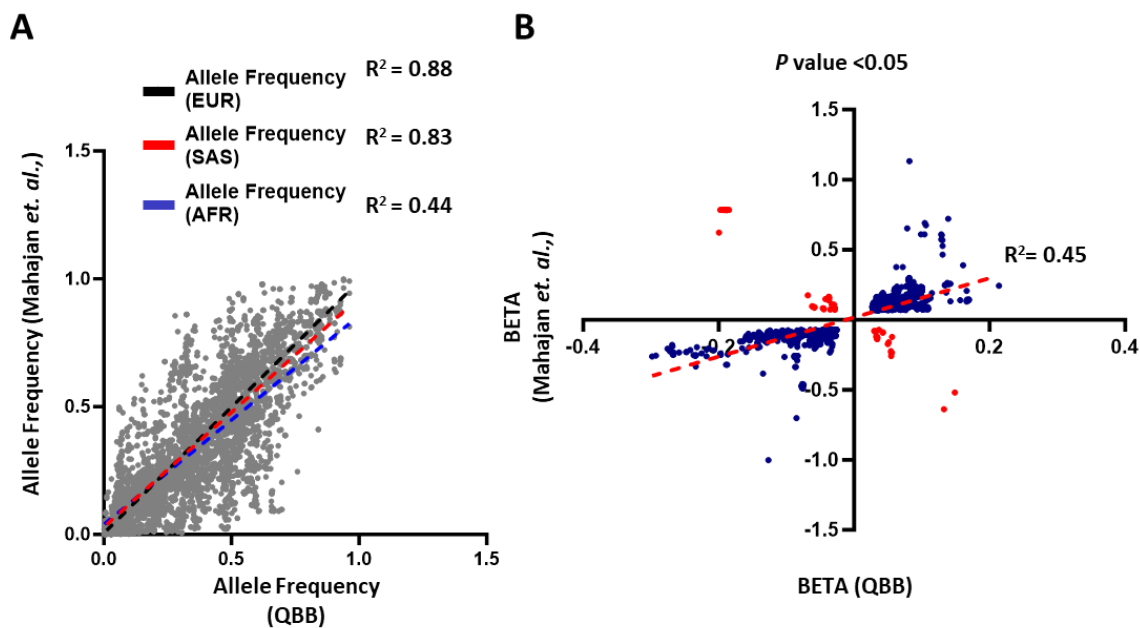


A**B**

Supplementary Figure 1. Comparison of Allele Frequencies of replicated SNPs between different populations and QBB Cohort. Correlation of allele frequencies between Mahajan *et. al.*, (26) and QBB in **A**. BMI-unadjusted and **B**. BMI-adjusted model. EUR: European; AFR: African; SAS: South Asian; QBB: Qatar Biobank.



Supplementary Figure 2. Comparison of Allele Frequencies and BETA of SNPs with genome-wide significance in Mahajan *et al.*, (26) and nominal significance in QBB cohort. A. Correlation of allele frequencies between Mahajan *et al.*, (26) and QBB cohort. **B.** Plot represents BETA of replicated SNPs. Blue dots represent SNPs with similar direction of effect size, while red dots represent SNPs with opposite direction of effect size. EUR: European; AFR: African; SAS: South Asian; QBB: Qatar Biobank.