

ORAL PRESENTATION

Open Access

Differences in pulmonary flow patterns between surgical and percutaneous implanted bovine valves to restore the right ventricle outflow tract continuity: a four dimensional flow magnetic resonance study

Soha Romeih^{1*}, Rob J van der Geest², Arno Roest⁴, Anje M Spijkerboer¹, Barbara J Mulder³, Nico A Blom⁴, Maarten Groenink³

From 17th Annual SCMR Scientific Sessions
New Orleans, LA, USA. 16-19 January 2014

Background

In patients with congenital heart defects, restoration of the right ventricle outflow tract (RVOT) continuity by surgical or percutaneous bovine valve implantation is a common procedure. Flow characteristics in such valves are complex, therefore the aim of this study was demonstrating the potential application of 4D MRI flow for the comprehensive assessment of pulmonary flow patterns after surgical and percutaneous bovine valve implantation in the RVOT.

Methods

Fifteen patients after percutaneous bovine valve implantation (17.2 ± 2.0 years), 15 patients after surgical implantation (15.8 ± 1.7 years), and 15 healthy volunteers (as a control group) (16.5 ± 1.5 years) were included. All subjects underwent a comprehensive cardiac MRI protocol. Analysis focused on the presence of vertical flow patterns; pulmonary flow eccentricity and wall shear rate (WSR) assessment.

Results

Patients with percutaneous implantation showed an eccentric pulmonary flow (deviation angle from the midline 31 ± 10 degree) with vortex formation (vortex size $73 \pm 18\%$), and a significant asymmetric elevated WSR at focal regions of the conduit. (Figure 1) Vortex size was positively correlated with the pressure gradient across the valve and with the flow deviation angle. In contrast, those after surgical implantation showed a laminar pulmonary flow with no visible vortex and had symmetric, although elevated WSR in the conduit regions. (Figure 2)

Conclusions

Pulmonary flow patterns differ significantly between patients with a surgical and percutaneously implanted bovine valve in the RVOT. Longer follow up studies will be required to determine the implications of such knowledge for prognosis and therapy.

Funding

No disclosure.

¹Radiology, AMC, Amsterdam, Netherlands
Full list of author information is available at the end of the article

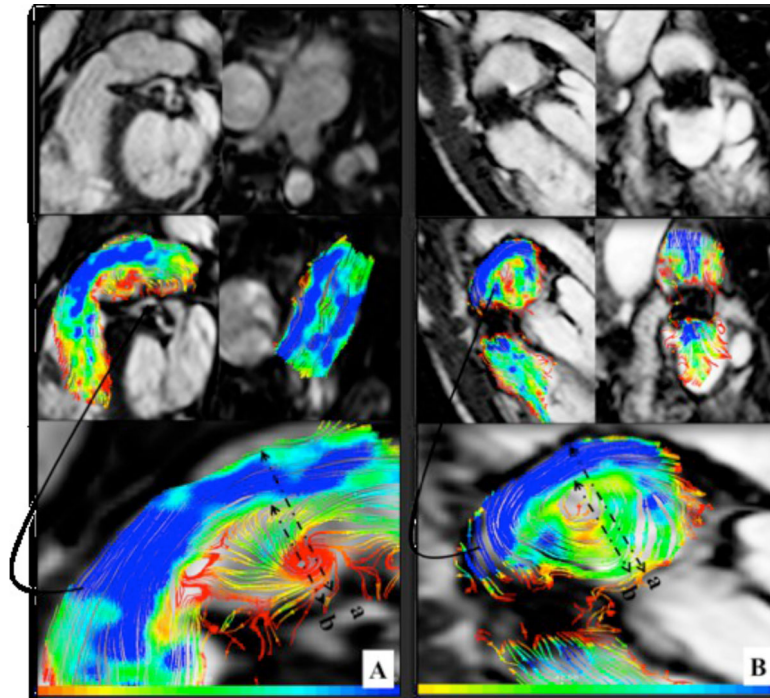


Figure 1 Upper rows; (A) Contegra conduit, upper left (sagittal view), upper right (coronal view); there is a focal small aneurysm in the lateral wall. (B) Melody valve, upper left (sagittal view), upper right (coronal view). Middle rows show traces of color-coded streamlines demonstrating eccentric flow, pulmonary flow is deviated from the midline, and vortex is seen. The lower rows are magnification of the vortex in a phase with the maximal vortex diameter. Vortex size measured as a percentage of the vessel diameter: diameter of the vortex (b)/diameter of pulmonary artery (a).

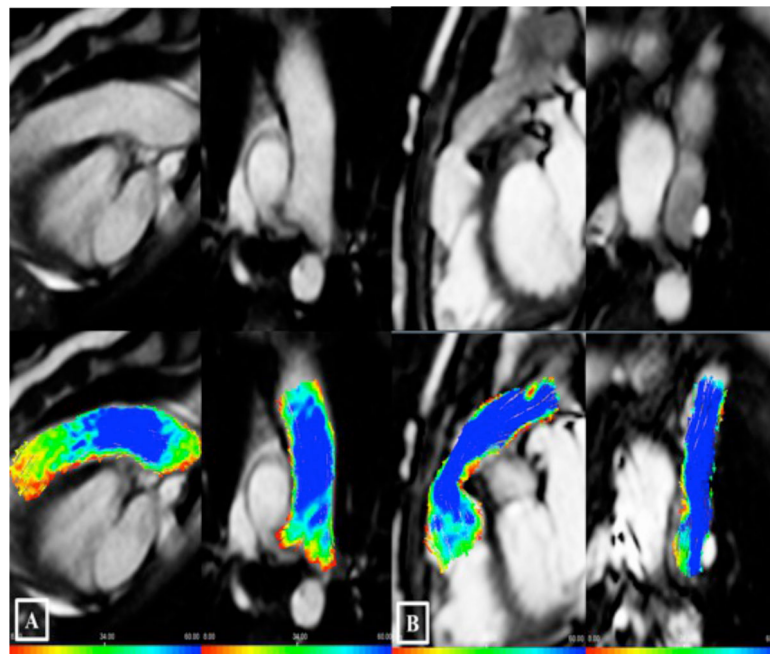


Figure 2 (A) Pulmonary artery in a normal subject; upper left (sagittal view), and upper right (coronal view). (B) Contegra conduit; upper left (sagittal view), upper right (coronal view). Lower rows show traces of color-coded streamlines demonstrating laminar flow, no visible vortex, and no deviation of the flow from the mid line.

Authors' details

¹Radiology, AMC, Amsterdam, Netherlands. ²Radiology, Leiden University Medical Center, Leiden, Netherlands. ³Cardiology, Academic Medical Center, Amsterdam, Netherlands. ⁴Paediatrics, Leiden University Medical Center, Leiden, Netherlands.

Published: 16 January 2014

doi:10.1186/1532-429X-16-S1-O44

Cite this article as: Romeih *et al.*: Differences in pulmonary flow patterns between surgical and percutaneous implanted bovine valves to restore the right ventricle outflow tract continuity: a four dimensional flow magnetic resonance study. *Journal of Cardiovascular Magnetic Resonance* 2014 **16**(Suppl 1):O44.

**Submit your next manuscript to BioMed Central
and take full advantage of:**

- Convenient online submission
- Thorough peer review
- No space constraints or color figure charges
- Immediate publication on acceptance
- Inclusion in PubMed, CAS, Scopus and Google Scholar
- Research which is freely available for redistribution

Submit your manuscript at
www.biomedcentral.com/submit

