

REVIEW

Engulfment signals and the phagocytic machinery for apoptotic cell clearance

Seung-Yoon Park^{1,2} and In-San Kim^{2,3}

The clearance of apoptotic cells is an essential process for tissue homeostasis. To this end, cells undergoing apoptosis must display engulfment signals, such as 'find-me' and 'eat-me' signals. Engulfment signals are recognized by multiple types of phagocytic machinery in phagocytes, leading to prompt clearance of apoptotic cells. In addition, apoptotic cells and phagocytes release tolerogenic signals to reduce immune responses against apoptotic cell-derived self-antigens. Here we discuss recent advances in our knowledge of engulfment signals, the phagocytic machinery and the signal transduction pathways for apoptotic cell engulfment.

Experimental & Molecular Medicine (2017) 49, e331; doi:10.1038/emm.2017.52; published online 12 May 2017

Several billion senescent or damaged cells in the body physiologically undergo apoptosis every day. Rapid removal of apoptotic cells from tissues is important for maintaining tissue homeostasis and preventing inappropriate inflammatory responses in multicellular organisms. During this process, apoptotic cells express engulfment signals such as 'find-me' and 'eat-me' signals that indicate they should be removed from tissues, and phagocytes engulf apoptotic cells using multiple types of phagocytic machinery. At this point, apoptotic cell phagocytosis is distinguished from other types of phagocytosis and is designated 'efferocytosis' ('effero' means 'to carry to the grave').¹ This review focuses on several recent advances in our understanding of engulfment signals, the phagocytic machinery and signal transduction during efferocytosis.

ENGULFMENT SIGNALS

'Find-me' signals

Cells undergoing apoptosis secrete molecules, so-called 'find-me' signals (also referred to as 'come-to-get-me' signals), to attract phagocytes toward them. To date, four representative 'find-me' signals have been identified, including lysophosphatidylcholine (LPC), sphingosine-1-phosphate (S1P), CX3C motif chemokine ligand 1 (CX3CL1, also referred to as fractalkine), and nucleotides (ATP and UTP; Figure 1). LPC is released from apoptotic cells and binds to the G-protein-coupled receptor G2A on macrophages, facilitating the migration of macrophages

to apoptotic cells.² In apoptotic cells, caspase-3 activation induces cleavage and activation of calcium-independent phospholipase A2 (iPLA2; also referred to as PLA2G6), which in turn processes phosphatidylcholine into LPC.³ Recently, ATP-binding cassette transporter A1 (ABCA1) was shown to be required for the release of LPC from apoptotic cells.⁴ CX3CL1 is generated as a membrane-associated protein and then released from apoptotic cells by proteolytic processing.⁵ The secreted CX3CL1 binds to CX3C motif chemokine receptor 1 (CX3CR1) on microglia and macrophages, resulting in the migration of phagocytes. However, the roles of LPC and CX3CL1 as 'find-me' signals have not been clarified in an *in vivo* animal model. S1P is generated from sphingosine by sphingosine kinase. It is secreted by dying cells in a caspase-3-dependent manner and binds to S1P receptors on macrophages, leading to the recruitment of macrophages to apoptotic cells.⁶ Nucleotides, including ATP and UTP, are released from apoptotic cells in a caspase-3-dependent manner and are sensed by purinergic receptors on phagocytes, resulting in the recruitment of phagocytes to apoptotic cells.⁷ The release of nucleotides from apoptotic cells is mediated by pannexin 1 channels, which are activated in apoptotic cells in a caspase-3-dependent manner.⁸ Although these molecules are defined as 'find-me' signals, many unanswered questions remain to be elucidated, including their reaction range, functional mode (cooperativity or redundancy) and *in vivo* relevance.

¹Department of Biochemistry, School of Medicine, Dongguk University, Gyeongju, Republic of Korea; ²Center for Theragnosis, Biomedical Research Institute, Korea Institute Science and Technology, Seoul, Republic of Korea and ³KU-KIST School, Korea University, Seoul, Republic of Korea
Correspondence: Professor S-Y Park, Department of Biochemistry, School of Medicine, Dongguk University, 123 Dongdae-ro, Gyeongju 780-714, Republic of Korea.

E-mail: psyoon@dongguk.ac.kr

or Professor I-S Kim, Biomedical Research Institute, Korea Institute Science and Technology, 5 Hwarang-ro 14-gil, Seoul 136-791, Republic of Korea.

E-mail: iskim14@kist.re.kr

Received 6 December 2016; accepted 15 December 2016

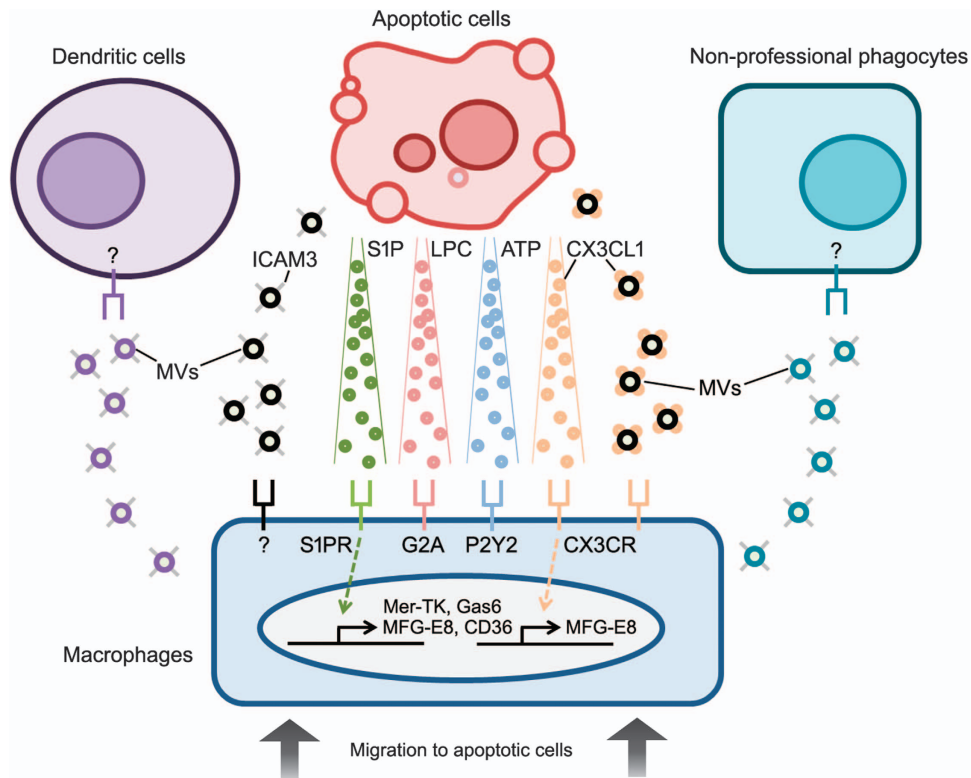


Figure 1 ‘Find-me’ signals released by apoptotic cells and extracellular vesicles. Four representative ‘find-me’ signals released by apoptotic cells have been identified, including S1P (sphingosine-1-phosphate), LPC (lysophosphatidylcholine), nucleotides (ATP or UTP) and CX3CL1 (CX3C motif chemokine ligand 1; fractalkine). They bind to S1PR, G2A, P2Y2 and CX3CR, respectively, on the phagocyte surface, promoting phagocyte migration to apoptotic cells. Extracellular vesicles released by apoptotic cells and phagocytes appear to modulate functions of phagocytes during efferocytosis. Apoptotic cell-derived microparticles also attract macrophages to sites of cell death through CX3CL1 and ICAM3. Phagocyte-derived microvesicles and exosomes modulate phagocytic capacity in epithelial cells and the transfer of apoptotic cell-derived antigens to dendritic cells, respectively.

In addition, ‘find-me’ signals have multiple roles in efferocytosis. CX3CL1 appears to upregulate MFG-E8 expression in microglial cells and peritoneal macrophages.^{9,10} S1P released by apoptotic cells acts as an anti-apoptotic mediator and attenuates macrophage apoptosis,¹¹ suggesting that apoptotic cells can prevent damage to neighboring cells to maintain tissue homeostasis. Recently, S1P has been shown to trigger the activation of erythropoietin (EPO)–EPO receptor (EPOR) signaling, which increases the expression of phagocytic receptors through peroxisome proliferator-activated receptor- γ .¹²

‘Eat-me’ signals

Dying cells also express ‘eat-me’ signals on the cell surface to indicate they should be engulfed by macrophages (Figure 2). Although a variety of potential ‘eat-me’ signals have been proposed, the best-characterized ‘eat-me’ signal is the expression of phosphatidylserine on the cell surface. Phosphatidylserine is a plasma membrane phospholipid that is localized on the inner membrane leaflet of the lipid bilayer in healthy cells and externalized on the cell surface in response to apoptotic stimuli.¹³ The externalization of phosphatidylserine on the cell surface during apoptosis and its role in cell corpse clearance has also been identified in *Caenorhabditis elegans* and *Drosophila*.^{14,15}

Recently, Xkr-related protein 8 (Xkr8) has been shown to mediate surface expression of phosphatidylserine in apoptotic cells in a caspase-3-dependent manner.¹⁶ This process is also mediated by the Xkr8 ortholog CED-8 in *Caenorhabditis elegans*, indicating a conserved mechanism for apoptotic phosphatidylserine exposure.¹⁷ More recently, Xkr8 has been shown to associate with basigin or neuropilin at the plasma membrane in response to apoptotic stimuli, and this complex is required for the proper scrambling activity of Xkr8.¹⁸ In addition, the P-type ATPase ATP11C acts as a flippase to transport aminophospholipids from the outer leaflet to the inner leaflet of the lipid bilayer to maintain membrane asymmetry. In cells undergoing apoptosis, it is inactivated by caspase-3-mediated cleavage, permitting phosphatidylserine externalization.¹⁹

Calreticulin (CRT) is another potential ‘eat-me’ signal expressed on the apoptotic cell surface. In dying cells induced by endoplasmic reticulum (ER) stress, activated protein kinase RNA-like ER kinase phosphorylates eIF2 α , which induces caspase-8 activation, Bap31 cleavage and Bax activation, resulting in the translocation of CRT from the ER to the Golgi and SNARE-mediated exocytosis.²⁰ CRT on the apoptotic cell surface is sensed by low-density lipoprotein receptor-related protein (also referred to as CD91) on phagocytes to promote

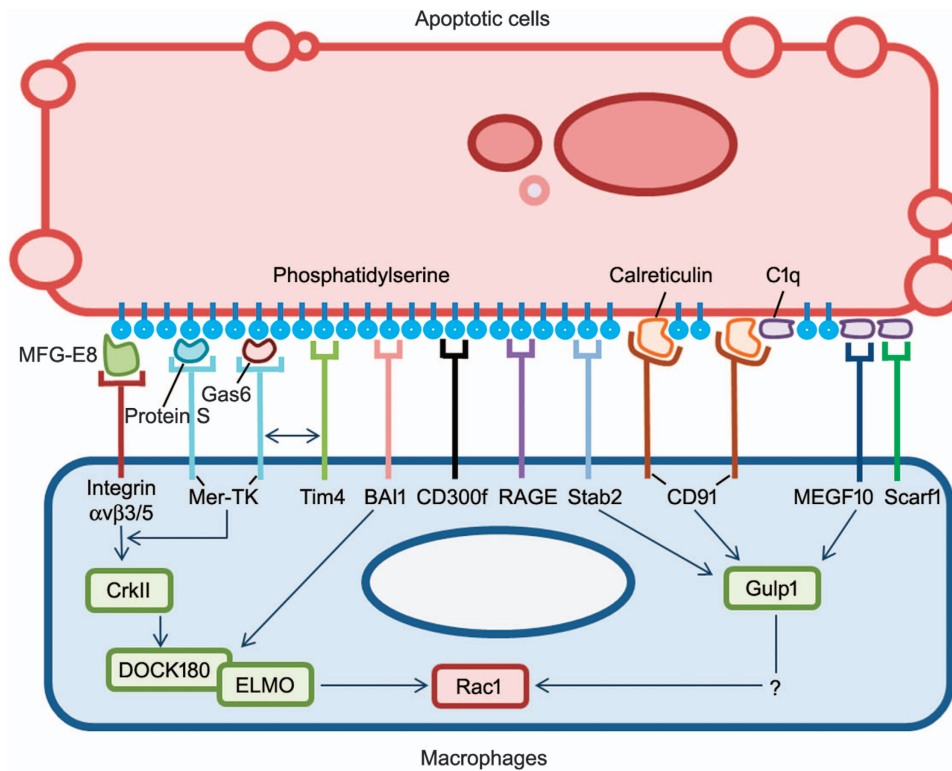


Figure 2 ‘Eat-me’ signals, phagocytic machinery and signaling pathways. Apoptotic cells express ‘eat-me’ signals, such as phosphatidylserine and calreticulin, on the cell surface in response to apoptotic stimuli. Exposed phosphatidylserine on the apoptotic cell surface is recognized directly by phosphatidylserine receptors (Tim family proteins, BAI1, Stabilin-2, CD300f and RAGE) or indirectly by bridging molecules (MFG-E8, Gas6, protein S and C1q). MFG-E8 bound to phosphatidylserine is recognized by integrin $\alpha\beta3/5$ on the phagocytes, and Gas6 or protein S bound to phosphatidylserine is sensed by Mer-TK. Bridging molecule C1q is recognized by MEGF10 or scarf1. Another ‘eat-me’ signal, calreticulin, is associated with phosphatidylserine or C1q on the apoptotic cell surface and recognized by CD91 (LRP1). Integrin $\alpha\beta3/5$ and BAI1 transduce signals for cytoskeletal rearrangement through DOCK180/ELMO1, whereas Stabilin-2, MEGF10 and CD91 use adaptor protein Gulp1 as an engulfment signaling pathway.

engulfment.²¹ Recently, CRT is shown to bind to phosphatidylserine via its C-terminal acidic region, leading to apoptotic cell phagocytosis.²² Furthermore, phagocytosis of cells expressing CRT on the cell surface appears to induce immunogenic responses,²³ suggesting that recognition of CRT by specific phagocytes, especially dendritic cells, might trigger immunogenic signals rather than self-tolerance signals. However, it is unclear whether recognition of CRT is sufficient to trigger a signal to induce immunogenic responses in phagocytes (macrophages and dendritic cells). CRT is also expressed on the cell surface of macrophages through TLR and Btk signaling, stimulating cancer cell phagocytosis.²⁴ It is therefore possible that CRT is a PS-binding bridging molecule released from apoptotic cells and phagocytes rather than an ‘eat-me’ signal.

In addition to the role of phosphatidylserine as an ‘eat-me’ signal, the recognition of phosphatidylserine by phagocytes can enhance cholesterol efflux from cells to maintain cellular homeostasis²⁵ and trigger release of anti-inflammatory cytokines to induce immunogenic tolerance for apoptotic cell-derived antigens.²⁶ These findings suggest that phosphatidylserine exposure is not only an ‘eat-me’ flag to detect apoptotic cells but also a trigger of endogenous signaling for cellular homeostasis in phagocytes. However, the molecular

details of phosphatidylserine-mediated signaling remain to be clarified further.

‘Don’t eat-me’ signals

Healthy cells display ‘don’t eat-me’ signals, such as CD47 and CD31, on the cell surface to avoid efferocytosis. CD47 (also referred to as integrin-associated protein) is a membrane protein composed of an immunoglobulin (Ig) domain, five membrane-spanning regions and cytoplasmic region. Oldenborg *et al.*²⁷ found that CD47-deficient erythrocytes injected into mice are more rapidly removed by splenic macrophages than are CD47-positive erythrocytes. They suggested that CD47 functions as a signal for discrimination between self and non-self. In healthy cells, CD47 interacts with signal regulatory protein alpha (SIRP α ; also referred to as SHPS-1 and CD172a) on macrophages. The CD47–SIRP α interaction induces tyrosine phosphorylation of the immunoreceptor tyrosine-based inhibitory motif in the SIRP α cytoplasmic tail and subsequent recruitment and activation of the inhibitory tyrosine phosphatases SHP-1 and SHP-2, resulting in the negative regulation of actin cytoskeletal rearrangement for phagocytosis. Senescent or damaged cells exhibit decreased CD47 expression or an altered pattern of CD47 distribution,

thereby permitting efferocytosis.^{21,28} Several cancer cell types, such as circulating leukemic stem cells and acute myeloid leukemia, were found to highly express CD47 on their surface to evade immune cells.^{29,30} Recent studies showed that a neutralizing CD47 antibody or soluble SIRP α variants promote tumor cell engulfment by macrophages and suppress tumor growth in *in vivo* tumor models.^{31–33}

Another candidate ‘don’t eat-me’ signal is CD31 (also referred to as platelet and endothelial cell adhesion molecule 1). A CD31–CD31 homotypic interaction between viable neutrophils and phagocytes acts as a repulsive signal, thereby mediating detachment of viable cells from phagocytes. In contrast, apoptotic cells do not trigger this repulsive signal and are efficiently engulfed by phagocytes.³⁴ However, the intracellular signaling pathways for CD31-mediated repulsion remain to be clarified.

Extracellular vesicles

Almost all cells release membrane vesicles, which play an important role in intercellular communications.³⁵ Apoptotic cells can mediate the recruitment of phagocytes through the release of microparticles (Figure 1). ICAM-3 in apoptotic cell-derived microparticles induces the migration of macrophages towards apoptotic cells.³⁶ CX3CL1-positive microparticles are shown to induce the recruitment of macrophages to apoptotic cells.³⁷ Adipocyte-derived microparticles are released in a caspase-3 and Rho-kinase-dependent manner and facilitate macrophage migration to obese adipose tissues.³⁸ Recently, microparticles released from apoptotic cells have been shown to induce immune responses to apoptotic cell-derived antigens in the presence of IFN- α .³⁹ Chromatin on the apoptotic cell surface appears to be a self-antigen that triggers immunogenic responses.⁴⁰ Thus, microparticles elicited from apoptotic cells might be removed to maintain tissue homeostasis and prevent aberrant inflammation. However, the clearance mechanism of apoptotic cell-derived microparticles remains to be investigated.

Phagocytes also appear to emit microparticles.⁴¹ Recent studies showed that macrophages can communicate with other professional or nonprofessional phagocytes through the release of extracellular vesicles (Figure 1). Insulin-like growth factor-1 (IGF-1) released from macrophages promotes the engulfment of macrophage-derived microvesicles by epithelial cells, leading to reduced inflammatory responses in epithelial cells.⁴² Macrophages are capable of transferring dead-cell-associated antigens to dendritic cells through the release of exosomes in a ceramide-dependent manner.⁴³ These observations suggest that microvesicles derived from apoptotic cells or phagocytes can modulate efferocytosis.

TOLEROGENIC SIGNALS

In the absence of infection or inflammation, apoptotic cell clearance is immunogenically silent. At this point, apoptotic cells and phagocytes might express signals to suppress the immune response to self-antigens. Apoptotic cells release signals to inhibit the recruitment of inflammatory cells, known

as ‘keep out’ or ‘stay away’ signals. Lactoferrin is expressed in response to apoptotic stimuli and selectively inhibits the migration of granulocytes (neutrophils and eosinophils) but not monocytes and macrophages.^{44,45} However, the role of lactoferrin in the negative regulation of the migration of inflammatory cells requires clarification in an *in vivo* animal model.

Annexin A1 was originally defined as an engulfment signal for the efficient clearance of apoptotic cells.⁴⁶ Annexin A1 on the apoptotic cell surface is known to inhibit dendritic activation, which in turn inhibits inflammatory cytokines and T-cell activation for apoptotic cell-derived antigens.⁴⁷ Annexins A5 and A13 also suppress dendritic cell activation for apoptotic cell-derived antigens, resulting in immunogenic tolerance.⁴⁸ However, deficiency in individual annexins did not show an obvious phenotype such as autoimmunity, suggesting that annexin proteins may have a redundant function. Thus, it remains to be defined whether annexin proteins are tolerogenic factors to suppress immune responses for apoptotic cell-derived antigens.

The 12/15-lipoxygenase in resident peritoneal macrophages causes the cell surface exposure of oxidized phosphatidylethanolamine, which sequesters the MFG-E8 required for the clearance of apoptotic cells in inflammatory monocytes, suggesting that oxidized phosphatidylethanolamine on resident macrophages may be a signal to reduce immune responses.⁴⁹ Recently, the chromatin on microparticles secreted from apoptotic cells was shown to be a self-antigen that induces immunogenic responses. In this context, DNase1L3 produced by macrophages and dendritic cells digests chromatin in apoptotic cell-derived microparticles,⁴⁰ suggesting that secreted DNase1L3 is a molecular mechanism for achieving immune tolerance for apoptotic cell-associated antigens.

PHAGOCYtic MACHINERY

Phagocytes can recognize phosphatidylserine on the apoptotic cell surface through two types of phosphatidylserine recognition machinery: phosphatidylserine receptors and soluble bridging molecules. Phosphatidylserine receptors on the surface of phagocytes directly bind to phosphatidylserine on apoptotic cells, whereas soluble bridging molecules recognize phosphatidylserine on the apoptotic cell surface and function as a bridge between apoptotic cells and cell surface receptors on phagocytes (Figure 2).

Phosphatidylserine receptors

T-cell immunoglobulin and mucin domain-containing molecule (Tim) family proteins, Tim-1 (also referred to as kidney injury molecule 1 (Kim-1)), Tim-3 and Tim-4, act as phosphatidylserine receptors to clear apoptotic cells.^{50–52} Tim-1 and Tim-4 bind to phosphatidylserine through a metal-ion-dependent ligand-binding site in their immunoglobulin V domain.⁵³ Tim-1 is highly expressed in damaged kidney epithelial cells and confers phagocytic capacity to them.⁵⁴ Tim-1-mediated efferocytosis is responsible for protecting the kidney after acute injury through PI3K-dependent

downregulation of NF- κ B.⁵⁵ Tim-3 is expressed in peritoneal exudate cells and CD8-positive dendritic cells and contributes to the clearance of apoptotic cells and cross-presentation of apoptotic cell-associated antigens.⁵² Tim-4 is expressed by professional phagocytes (macrophages and dendritic cells) and controls phosphatidylserine-dependent efferocytosis and adaptive immunity.^{50,56} However, Tim-4 does not seem to transduce a signal for engulfment, which suggests that Tim-4 functions as a tethering receptor to recognize phosphatidylserine on the apoptotic cell surface and may be required for other proteins to trigger internalization of apoptotic cells.⁵⁷ Indeed, recent studies identified that Mer-TK and integrin β 1 act as partners to transduce signals after Tim-4-mediated phosphatidylserine recognition.^{58,59}

Brain-specific angiogenesis inhibitor 1 (BAI1) is a member of the G-protein-coupled receptor family; it has seven transmembrane regions and binds to phosphatidylserine through its thrombospondin type 1 repeats.⁶⁰ BAI1 interacts with the DOCK180/ELMO1 complex through an α -helical region in its cytoplasmic tail, thereby providing the signal for Rac1 activation. However, BAI1 is predominantly expressed in neuronal cells of the cerebral cortex,⁶¹ suggesting that its role may be tissue-specific. Recently, BAI1 is known to contribute to phagosome formation and transport during the phagocytosis of apoptotic neurons by microglial cells.⁶² In skeletal muscle, BAI1 and its homologous protein BAI3 bind to apoptotic myoblasts and transduce signals to fuse myoblasts.^{63,64}

Stabilin-2 (also referred to as hyaluronic acid receptor for endocytosis (HARE) and FEEL-2) is a large membrane protein that is composed of seven FAS1 domains, eight atypical epidermal growth factor (EGF)-like domains, fifteen EGF-like domains, a Link domain, a transmembrane region and a cytoplasmic domain.⁶⁵ Stabilin-2 binds to phosphatidylserine via its EGF-like domain repeats, promoting apoptotic cell engulfment.⁶⁶ The histidine residue in the PS-binding loops is conserved in four EGF-like-domain repeats and plays an important role in pH-dependent phagocytic activity.⁶⁷ Stabilin-1 (also referred to as CLEVER-1 and FEEL-1), a homologous protein of stabilin-2, mediates apoptotic cell engulfment through phosphatidylserine recognition.⁶⁸ Stabilin-1 and -2 are expressed in sinusoidal endothelial cells and macrophages.^{65,69-71} In hepatic endothelial cells, they act as tethering receptors for the capture of phosphatidylserine-exposed damaged erythrocytes through phosphatidylserine recognition.⁷² However, the functions of stabilin-1 and -2 on efferocytosis require clarification in a knockout mouse model.

CD300 family proteins, including CD300b and CD300f, have recently been shown to act as phosphatidylserine recognition receptors to clear apoptotic cells.^{73,74} CD300f regulates the engulfment of apoptotic cells via the PI3K pathway, leading to the activation of Rac1/Cdc42 GTPases to regulate F-actin.⁷⁵ CD300b is associated with DAP12 through its ITAM motif and activates the PI3K/Akt pathway.⁷³ In contrast, another CD300 family protein, CD300a, inhibits the uptake of apoptotic cells through binding to phosphatidylserine and phosphatidylethanolamine.⁷⁶ How the recognition of

phosphatidylserine by CD300 family proteins induces stimulatory and inhibitory signals for apoptotic cell removal remains to be investigated.

Receptor for advanced glycation end products (RAGE) also binds to phosphatidylserine and has a role in the clearance of apoptotic cells.⁷⁷ RAGE is a type I membrane protein that belongs to the immunoglobulin protein family and specifically binds to phosphatidylserine. However, various soluble forms of RAGE also bind to phosphatidylserine on the apoptotic cell surface, thereby preventing apoptotic cell engulfment by phagocytic receptors. The physiological role of soluble RAGE proteins remains to be studied. In addition, several scavenger receptors have been proposed as receptors for apoptotic cell clearance, including CD36 and CD14. CD36 associates with integrin to engulf apoptotic cells in a thrombospondin-dependent manner and directly binds to oxidized phosphatidylserine.^{78,79} CD14 has been proposed to be a receptor for apoptotic cell engulfment.⁸⁰ Studies of CD14-deficient mice showed that CD14 is a tethering receptor but not an engulfment receptor for apoptotic cells.⁸¹

Bridging molecules that recognize phosphatidylserine

Several soluble proteins have been identified as bridging molecules that recognize the 'eat-me' signals on the surface of apoptotic cells, including milk fat globule EGF factor 8 (MFG-E8, also referred to as lactadherin), growth arrest-specific 6 (Gas6), protein S and C1q. They bind to both phosphatidylserine on the apoptotic cell surface and phagocytic receptors on phagocytes, providing a link between apoptotic cells and phagocytes. MFG-E8 secreted by macrophages and immature dendritic cells binds to phosphatidylserine on apoptotic cells through its C1 and C2 domains and interacts with α v β 3 or α v β 5 integrin on phagocytes through the RGD (Arg-Gly-Asp) motif in its EGF domain, resulting in the promotion of apoptotic cell phagocytosis.^{82,83} Gas6 and protein S share a similar domain structure and bind to phosphatidylserine on apoptotic cells to promote efferocytosis.^{84,85} They are composed of a Gla domain at the N terminus, four EGF-like domains, and two laminin G-like domains at the C terminus. They bind to phosphatidylserine in a calcium-dependent manner via their Gla domain and associate with Tyro3-Axl-Mer (TAM) family tyrosine-kinase receptors on phagocytes through laminin G-like domains.^{86,87}

Mer tyrosine kinase (Mer-TK) is the best-characterized TAM receptor and is known to transduce an important signal for apoptotic cell engulfment.⁸⁸ Mer-TK signaling is functionally associated with multiple engulfment systems for the efficient removal of apoptotic cells. Signaling from Mer-TK is induced by binding to Gas6 and functionally associated with α v β 5 integrin-mediated signaling.⁸⁹ Scavenger receptor A (SR-A) associates with Mer-TK to transduce signals during apoptotic cell engulfment.⁹⁰ Galectin-3 was found to be a new ligand of Mer-TK for apoptotic cell clearance.⁹¹ Mer-TK mediates signal transduction from Tim-4-mediated efferocytosis.⁵⁸ Considering that Mer-TK plays a crucial role in inhibiting dendritic cell activation for apoptotic cell-associated antigens,⁹² it is possible that Mer-TK has a common

role in multiple engulfment systems to regulate immune responses. Recently, the TAM receptor tyrosine kinases Mer-TK and Axl were shown to function as phagocytic receptors under different environments. Mer-TK is primarily expressed at steady-state or under immune suppressive conditions and maintains immune tolerance, whereas Axl is expressed in response to proinflammatory stimuli and suppresses immune responses.⁹³

Another potential bridging molecule is C1q, the first component of complement, which binds to phosphatidylserine on the apoptotic cell surface.⁹⁴ C1q binds to apoptotic cells likely via its globular head and interacts with calreticulin-CD91 on phagocytes to promote apoptotic cell engulfment.⁹⁵ SCARF1 (also referred to as scavenger receptor expressed by endothelial cell 1) acts as a receptor that recognizes C1q bound to apoptotic cells.⁹⁶ Recently, MEGF10 has also been shown to mediate apoptotic neuron clearance by astrocytes through bridging molecule C1q.⁹⁷ Furthermore, the activation of macrophages by C1q regulates Mer-TK and Gas6 expression.⁹⁸

Possible link between many engulfment signals and the phagocytic machinery

Why are multiple phagocytic receptors necessary for efficient efferocytosis? Such multiple apoptotic cell recognition systems may be useful at several levels. First, discriminating dying cells from live cells during efferocytosis is important for proper cellular turnover. Although several 'eat-me' signals are present, there are many cases in which phosphatidylserine is substantially expressed on the cell surface of live cells, including cell-cell fusion, T-cell activation and platelet activation.⁹⁹ It is possible that specificity for apoptotic cell recognition can be improved if multiple phagocytic receptors bind to specific 'eat-me' flags on the apoptotic cell surface, or that sufficient mechanical force for efferocytosis can be provided by multiple phosphatidylserine recognition systems. Second, the eating of apoptotic cells by macrophages requires various cellular events, including the tethering of apoptotic cells on phagocytes, cytoskeletal rearrangement for internalization, suppression of immune responses, and disposal of metabolic burden. Thus, multiple phagocytic receptors may be required to perform various cellular processes during efferocytosis. Recently, several receptors have been proposed to act cooperatively for efferocytosis. Stabilin-2 associates with integrin $\alpha\beta 5$ through its FAS1 domain and functions cooperatively for apoptotic cell engulfment.¹⁰⁰ In peritoneal macrophages, Tim-4 functions as a tethering receptor for adhesion between apoptotic cells and macrophages, and Mer-TK acts as a tickling receptor to transduce signals for cytoskeletal rearrangement.⁵⁸ During the engulfment of apoptotic neurons, BAI1 is involved in the formation and transport of phagosomes, whereas Tim-4 contributes to phagosome stabilization.⁶² Third, particular types of phagocytic machinery for phosphatidylserine recognition may be required for the efficient efferocytosis of specific phagocytes or under specific conditions. For example, Tim-4 is indispensable for tissue homeostasis in resident peritoneal macrophages, whereas MFG-E8 is essential for apoptotic cell

clearance in inflammatory macrophages.¹⁰¹ Mer-TK is activated by Gas6 or protein S and acts as a receptor for the maintenance of self-tolerance in resting macrophages. In contrast, Axl is activated by only Gas6 under inflammatory conditions and acts as a receptor for immune suppression.⁹³

SIGNALING FOR APOPTOTIC CELL ENGLUFMENT

Signaling pathways for cytoskeletal rearrangement

Genetic analyses in *Caenorhabditis elegans* identified three signaling pathways that mediate apoptotic cell clearance: (1) the CED-1, 6 and 7 pathway; (2) the CED-2, 5, and 12 pathway; and (3) the ABI-1 and ABL-1 pathway.¹⁰²⁻¹⁰⁵ In the first pathway, multiple EGF-like domains 10 (MEGF10) and Jedi (also referred to as MEGF12), mammalian homologs of CED-1, act as phagocytic receptors for apoptotic cell clearance.^{106,107} MEGF10 indirectly recognizes phosphatidylserine on the apoptotic cell surface through the bridging molecule C1q,⁹⁷ whereas the molecular mechanism by which apoptotic cells are recognized by Jedi remains to be studied. MEGF10 and Jedi bind to Gulp1 (phosphotyrosine-binding domain-containing engulfment adaptor protein 1), a mammalian ortholog of CED-6, through an NPxY motif in their cytoplasmic region, leading to the transduction of a signal for cytoskeletal rearrangement.^{108,109} ABCA1 and ABCA7, mammalian orthologs of CED-7, are members of the ATP-binding cassette containing transporter family that transport a variety of substances across the plasma membrane. They are involved in apoptotic cell clearance through unknown mechanisms.^{110,111} ABCA1 also has multiple functions in apoptotic cells and phagocytes during efferocytosis, including the release of 'find-me' signals, protection from oxidative stress-induced apoptosis, and enhancement of cholesterol efflux.^{4,25,108,112} The Gulp1 signaling pathway converges on Rac1 (an ortholog of *Caenorhabditis elegans* CED-10)¹¹³ and is the downstream signaling pathway through which several phagocytic receptors, such as low-density lipoprotein receptor-related protein-1, Stabilin-1 and Stabilin-2, regulate apoptotic cell engulfment.¹¹⁴⁻¹¹⁶ Stabilin-2 is known to coordinate the activities of the two phagocytic pathways (the Gulp1 pathway and ELMO1/DOCK180 pathway) through a direct interaction with integrin $\alpha\beta 5$.¹⁰⁰ However, the intermediates between Gulp1 and Rac1 in this pathway are largely unknown. In the second pathway, the mammalian homologs of CED-2, 5 and 12 are CrkII, DOCK180 and ELMO1, respectively. CrkII associates with DOCK180, a guanine-nucleotide exchange factor, which in turn triggers Rac1 activation.¹¹⁷ ELMO1 associates with DOCK180 and acts as a positive regulator of Rac1 activation in *Caenorhabditis elegans* and mammalian cells.^{118,119} In addition, TRIO/UNC-73 and RhoG/MIG-2 signaling also contribute to DOCK180-mediated Rac1 activation for proper phagocytosis.¹²⁰ This pathway is downstream of the PS-receptor BAI1 as well as integrin $\alpha\beta 5$.^{60,117} In the third signaling pathway, ABI-1 (Abi) promotes apoptotic cell clearance through regulation of Rac-1 activity or an independent pathway. ABL-1 interacts with ABI-1 and negatively regulates engulfment by inhibiting ABI-1.¹²¹ However, the role

of the mammalian counterparts of the genes involved in this pathway remains to be defined.

Other signaling pathway during apoptotic cell engulfment

Signaling of the tumor suppressor p53 is shown to regulate apoptotic cell engulfment. p53 controls phagocytosis of apoptotic cells by regulating the expression of death domain 1 α .¹²² Death domain 1 α is an immunoglobulin superfamily receptor that mediates homophilic interactions between apoptotic cells and phagocytes, leading to the removal of apoptotic cells. The phosphatidylserine receptor BAI1 is also a specific target of p53 in the brain.⁶¹ However, the molecular mechanism by which p53 signaling is activated in phagocytes remains to be defined. Several factors that can regulate cellular metabolic processes have been proposed as modulators for efferocytosis. Uncoupled protein 2, which reduces mitochondrial membrane potential in cells through uncoupling oxidative phosphorylation from ATP generation, has been shown to positively regulate the engulfment capacity of phagocytes.¹²³ Peroxisome proliferator-activated receptors and liver X receptors are activated by the engagement of apoptotic cell and regulate apoptotic cell engulfment, likely increasing the expression of phagocytic receptors or bridging molecules.^{124–126} The nuclear receptor Nr4a1 contributes to anti-inflammatory effects during apoptotic cell phagocytosis.¹²⁷ These findings suggest that apoptotic cell clearance is associated with metabolic processes. However, it remains to be seen how the recognition of apoptotic cells activates nuclear receptors.

CONCLUSIONS

Apoptosis and efferocytosis are processes for homeostatic cell turnover in multicellular organisms, and proper corpse clearance is important to prevent inappropriate inflammatory responses such as autoimmunity. Over the past two decades, numerous studies have been performed to unveil the molecular mechanisms of apoptotic cell clearance, leading to a significant increase in our knowledge of this area. However, multiple unanswered questions concerning clearance mechanisms remain. Why are multiple phagocytic components necessary for efferocytosis? What is the signaling cascade mediated by receptors for engulfment signals? Can particular engulfment signals or phagocytic mechanisms determine immunogenic or tolerogenic clearance of apoptotic cells? To answer these questions, further understanding of engulfment signals and the phagocytic machinery is required. Furthermore, defective clearance of apoptotic cells in tissues is associated with the pathogenesis of various diseases, including autoimmune diseases, chronic obstructive pulmonary disease, atherosclerosis, Alzheimer's disease and cancer.¹²⁸ Thus, an understanding of the precise mechanism of apoptotic cell engulfment could be useful for the development of therapeutic strategies for controlling diseases associated with defective efferocytosis.

CONFLICT OF INTEREST

The authors declare no conflict of interest.

ACKNOWLEDGEMENTS

This study was supported by a grant from the National R&D Program for Cancer Control, Ministry of Health and Welfare, Republic of Korea (1420390); by the Basic Science Research Program through the National Research Foundation of Korea (NRF) funded by the Ministry of Education, Science, and Technology (NRF-2014R1A1A4A0100-5556); by the Dongguk University Research Fund of 2016; and by the KIST Institutional Program (Project No 2E26320).

- 1 deCathelineau AM, Henson PM. The final step in programmed cell death: phagocytes carry apoptotic cells to the grave. *Essays Biochem* 2003; **39**: 105–117.
- 2 Peter C, Waibel M, Radu CG, Yang LV, Witte ON, Schulze-Osthoff K *et al*. Migration to apoptotic 'find-me' signals is mediated via the phagocyte receptor G2A. *J Biol Chem* 2008; **283**: 5296–5305.
- 3 Lauber K, Bohn E, Krober SM, Xiao YJ, Blumenthal SG, Lindemann RK *et al*. Apoptotic cells induce migration of phagocytes via caspase-3-mediated release of a lipid attraction signal. *Cell* 2003; **113**: 717–730.
- 4 Peter C, Waibel M, Keppeler H, Lehmann R, Xu G, Halama A *et al*. Release of lysophospholipid 'find-me' signals during apoptosis requires the ATP-binding cassette transporter A1. *Autoimmunity* 2012; **45**: 568–573.
- 5 Truman LA, Ford CA, Pasikowska M, Pound JD, Wilkinson SJ, Dumitriu IE *et al*. CX3CL1/fractalkine is released from apoptotic lymphocytes to stimulate macrophage chemotaxis. *Blood* 2008; **112**: 5026–5036.
- 6 Gude DR, Alvarez SE, Paugh SW, Mitra P, Yu J, Griffiths R *et al*. Apoptosis induces expression of sphingosine kinase 1 to release sphingosine-1-phosphate as a 'come-and-get-me' signal. *FASEB J* 2008; **22**: 2629–2638.
- 7 Elliott MR, Chekeni FB, Trampont PC, Lazarowski ER, Kadl A, Walk SF *et al*. Nucleotides released by apoptotic cells act as a find-me signal to promote phagocytic clearance. *Nature* 2009; **461**: 282–286.
- 8 Chekeni FB, Elliott MR, Sandilos JK, Walk SF, Kinchen JM, Lazarowski ER *et al*. Pannexin 1 channels mediate 'find-me' signal release and membrane permeability during apoptosis. *Nature* 2010; **467**: 863–867.
- 9 Leonardi-Essmann F, Emig M, Kitamura Y, Spanagel R, Gebicke-Haerter PJ. Fractalkine-upregulated milk-fat globule EGF factor-8 protein in cultured rat microglia. *J Neuroimmunol* 2005; **160**: 92–101.
- 10 Miksa M, Amin D, Wu R, Ravikumar TS, Wang P. Fractalkine-induced MFG-E8 leads to enhanced apoptotic cell clearance by macrophages. *Mol Med* 2007; **13**: 553–560.
- 11 Weigert A, Johann AM, von Knethen A, Schmidt H, Geisslinger G, Brune B. Apoptotic cells promote macrophage survival by releasing the antiapoptotic mediator sphingosine-1-phosphate. *Blood* 2006; **108**: 1635–1642.
- 12 Luo B, Gan W, Liu Z, Shen Z, Wang J, Shi R *et al*. Erythropoietin signaling in macrophages promotes dying cell clearance and immune tolerance. *Immunity* 2016; **44**: 287–302.
- 13 Fadok VA, Voelker DR, Campbell PA, Cohen JJ, Bratton DL, Henson PM. Exposure of phosphatidylserine on the surface of apoptotic lymphocytes triggers specific recognition and removal by macrophages. *J Immunol* 1992; **148**: 2207–2216.
- 14 van den Eijnde SM, Boshart L, Baehrecke EH, De Zeeuw CI, Reutelingsperger CP, Vermeij-Keers C. Cell surface exposure of phosphatidylserine during apoptosis is phylogenetically conserved. *Apoptosis* 1998; **3**: 9–16.
- 15 Venegas V, Zhou Z. Two alternative mechanisms that regulate the presentation of apoptotic cell engulfment signal in *Caenorhabditis elegans*. *Mol Biol Cell* 2007; **18**: 3180–3192.
- 16 Suzuki J, Denning DP, Imanishi E, Horvitz HR, Nagata S. Xk-related protein 8 and CED-8 promote phosphatidylserine exposure in apoptotic cells. *Science* 2013; **341**: 403–406.
- 17 Chen YZ, Mapes J, Lee ES, Skeen-Gaar RR, Xue D. Caspase-mediated activation of *Caenorhabditis elegans* CED-8 promotes apoptosis and phosphatidylserine externalization. *Nat Commun* 2013; **4**: 2726.
- 18 Suzuki J, Imanishi E, Nagata S. Xkr8 phospholipid scrambling complex in apoptotic phosphatidylserine exposure. *Proc Natl Acad Sci USA* 2016; **113**: 9509–9514.

- 19 Segawa K, Kurata S, Yanagihashi Y, Brummelkamp TR, Matsuda F, Nagata S. Caspase-mediated cleavage of phospholipid flippase for apoptotic phosphatidylserine exposure. *Science* 2014; **344**: 1164–1168.
- 20 Panaretakis T, Kepp O, Brockmeier U, Tesniere A, Bjorklund AC, Chapman DC *et al*. Mechanisms of pre-apoptotic calreticulin exposure in immunogenic cell death. *EMBO J* 2009; **28**: 578–590.
- 21 Gardai SJ, McPhillips KA, Frasch SC, Janssen WJ, Starefeldt A, Murphy-Ullrich JE *et al*. Cell-surface calreticulin initiates clearance of viable or apoptotic cells through trans-activation of LRP on the phagocyte. *Cell* 2005; **123**: 321–334.
- 22 Wijeyesakere SJ, Bedi SK, Huynh D, Raghavan M. The C-terminal acidic region of calreticulin mediates phosphatidylserine binding and apoptotic cell phagocytosis. *J Immunol* 2016; **196**: 3896–3909.
- 23 Obeid M, Tesniere A, Ghiringhelli F, Fimia GM, Apetoh L, Perfettini JL *et al*. Calreticulin exposure dictates the immunogenicity of cancer cell death. *Nat Med* 2007; **13**: 54–61.
- 24 Feng M, Chen JY, Weissman-Tsukamoto R, Volkmer JP, Ho PY, McKenna KM *et al*. Macrophages eat cancer cells using their own calreticulin as a guide: roles of TLR and Btk. *Proc Natl Acad Sci USA* 2015; **112**: 2145–2150.
- 25 Kiss RS, Elliott MR, Ma Z, Marcel YL, Ravichandran KS. Apoptotic cells induce a phosphatidylserine-dependent homeostatic response from phagocytes. *Curr Biol* 2006; **16**: 2252–2258.
- 26 Huynh ML, Fadok VA, Henson PM. Phosphatidylserine-dependent ingestion of apoptotic cells promotes TGF-beta1 secretion and the resolution of inflammation. *J Clin Invest* 2002; **109**: 41–50.
- 27 Oldenburg PA, Zheleznyak A, Fang YF, Lagenaur CF, Gresham HD, Lindberg FP. Role of CD47 as a marker of self on red blood cells. *Science* 2000; **288**: 2051–2054.
- 28 Lv Z, Bian Z, Shi L, Niu S, Ha B, Tremblay A *et al*. Loss of cell surface CD47 clustering formation and binding avidity to SIRPalpha facilitate apoptotic cell clearance by macrophages. *J Immunol* 2015; **195**: 661–671.
- 29 Jaiswal S, Jamieson CH, Pang WW, Park CY, Chao MP, Majeti R *et al*. CD47 is upregulated on circulating hematopoietic stem cells and leukemia cells to avoid phagocytosis. *Cell* 2009; **138**: 271–285.
- 30 Majeti R, Chao MP, Alizadeh AA, Pang WW, Jaiswal S, Gibbs KD Jr *et al*. CD47 is an adverse prognostic factor and therapeutic antibody target on human acute myeloid leukemia stem cells. *Cell* 2009; **138**: 286–299.
- 31 Weiskopf K, Ring AM, Ho CC, Volkmer JP, Levin AM, Volkmer AK *et al*. Engineered SIRPalpha variants as immunotherapeutic adjuvants to anticancer antibodies. *Science* 2013; **341**: 88–91.
- 32 Tseng D, Volkmer JP, Willingham SB, Contreras-Trujillo H, Fathman JW, Fernhoff NB *et al*. Anti-CD47 antibody-mediated phagocytosis of cancer by macrophages primes an effective antitumor T-cell response. *Proc Natl Acad Sci USA* 2013; **110**: 11103–11108.
- 33 Liu X, Pu Y, Cron K, Deng L, Kline J, Frazier WA *et al*. CD47 blockade triggers T cell-mediated destruction of immunogenic tumors. *Nat Med* 2015; **21**: 1209–1215.
- 34 Brown S, Heinisch I, Ross E, Shaw K, Buckley CD, Savill J. Apoptosis disables CD31-mediated cell detachment from phagocytes promoting binding and engulfment. *Nature* 2002; **418**: 200–203.
- 35 Tkach M, Thery C. Communication by extracellular vesicles: where we are and where we need to go. *Cell* 2016; **164**: 1226–1232.
- 36 Torr EE, Gardner DH, Thomas L, Goodall DM, Bielemeier A, Willetts R *et al*. Apoptotic cell-derived ICAM-3 promotes both macrophage chemoattraction to and tethering of apoptotic cells. *Cell Death Differ* 2012; **19**: 671–679.
- 37 Tsai WH, Shih CH, Feng SY, Li IT, Chang SC, Lin YC *et al*. CX3CL1(+) microparticles mediate the chemoattraction of alveolar macrophages toward apoptotic acute promyelocytic leukemic cells. *Cell Physiol Biochem* 2014; **33**: 594–604.
- 38 Eguchi A, Mulya A, Lazic M, Radhakrishnan D, Berk MP, Povero D *et al*. Microparticles release by adipocytes act as ‘find-me’ signals to promote macrophage migration. *PLoS ONE* 2015; **10**: e0123110.
- 39 Niessen A, Heyder P, Krienke S, Blank N, Tykocinski LO, Lorenz HM *et al*. Apoptotic-cell-derived membrane microparticles and IFN-alpha induce an inflammatory immune response. *J Cell Sci* 2015; **128**: 2443–2453.
- 40 Sisirak V, Sally B, D’Agati V, Martinez-Ortiz W, Ozcakar ZB, David J *et al*. Digestion of chromatin in apoptotic cell microparticles prevents autoimmunity. *Cell* 2016; **166**: 88–101.
- 41 Garzetti L, Menon R, Finardi A, Bergami A, Sica A, Martino G *et al*. Activated macrophages release microvesicles containing polarized M1 or M2 mRNAs. *J Leukoc Biol* 2014; **95**: 817–825.
- 42 Han CZ, Juncadella IJ, Kinchen JM, Buckley MW, Klibanov AL, Dryden K *et al*. Macrophages redirect phagocytosis by non-professional phagocytes and influence inflammation. *Nature* 2016; **539**: 570–574.
- 43 Xu Y, Liu Y, Yang C, Kang L, Wang M, Hu J *et al*. Macrophages transfer antigens to dendritic cells by releasing exosomes containing dead-cell-associated antigens partially through a ceramide-dependent pathway to enhance CD4(+) T-cell responses. *Immunology* 2016; **149**: 157–171.
- 44 Bournazou I, Pound JD, Duffin R, Bournazos S, Melville LA, Brown SB *et al*. Apoptotic human cells inhibit migration of granulocytes via release of lactoferrin. *J Clin Invest* 2009; **119**: 20–32.
- 45 Bournazou I, Mackenzie KJ, Duffin R, Rossi AG, Gregory CD. Inhibition of eosinophil migration by lactoferrin. *Immunol Cell Biol* 2010; **88**: 220–223.
- 46 Arur S, Uche UE, Rezaul K, Fong M, Scranton V, Cowan AE *et al*. Annexin I is an endogenous ligand that mediates apoptotic cell engulfment. *Dev Cell* 2003; **4**: 587–598.
- 47 Weyd H, Abeler-Dorner L, Linke B, Mahr A, Jahndel V, Pfrang S *et al*. Annexin A1 on the surface of early apoptotic cells suppresses CD8+ T cell immunity. *PLoS ONE* 2013; **8**: e62449.
- 48 Linke B, Abeler-Dorner L, Jahndel V, Kurz A, Mahr A, Pfrang S *et al*. The tolerogenic function of annexins on apoptotic cells is mediated by the annexin core domain. *J Immunol* 2015; **194**: 5233–5242.
- 49 Uderhardt S, Herrmann M, Oskolkova OV, Aschermann S, Bicker W, Ipseiz N *et al*. 12/15-lipoxygenase orchestrates the clearance of apoptotic cells and maintains immunologic tolerance. *Immunity* 2012; **36**: 834–846.
- 50 Miyanishi M, Tada K, Koike M, Uchiyama Y, Kitamura T, Nagata S. Identification of Tim4 as a phosphatidylserine receptor. *Nature* 2007; **450**: 435–439.
- 51 Kobayashi N, Karisola P, Pena-Cruz V, Dorfman DM, Jinushi M, Umetsu SE *et al*. TIM-1 and TIM-4 glycoproteins bind phosphatidylserine and mediate uptake of apoptotic cells. *Immunity* 2007; **27**: 927–940.
- 52 Nakayama M, Akiba H, Takeda K, Kojima Y, Hashiguchi M, Azuma M *et al*. Tim-3 mediates phagocytosis of apoptotic cells and cross-presentation. *Blood* 2009; **113**: 3821–3830.
- 53 Santiago C, Ballesteros A, Martinez-Munoz L, Mellado M, Kaplan GG, Freeman GJ *et al*. Structures of T cell immunoglobulin mucin protein 4 show a metal-ion-dependent ligand binding site where phosphatidylserine binds. *Immunity* 2007; **27**: 941–951.
- 54 Ichimura T, Asseldonk EJ, Humphreys BD, Gunaratnam L, Duffield JS, Bonventre JV. Kidney injury molecule-1 is a phosphatidylserine receptor that confers a phagocytic phenotype on epithelial cells. *J Clin Invest* 2008; **118**: 1657–1668.
- 55 Yang L, Brooks CR, Xiao S, Sabbiseti V, Yeung MY, Hsiao LL *et al*. KIM-1-mediated phagocytosis reduces acute injury to the kidney. *J Clin Invest* 2015; **125**: 1620–1636.
- 56 Albacker LA, Karisola P, Chang YJ, Umetsu SE, Zhou M, Akbari O *et al*. TIM-4, a receptor for phosphatidylserine, controls adaptive immunity by regulating the removal of antigen-specific T cells. *J Immunol* 2010; **185**: 6839–6849.
- 57 Park D, Hochreiter-Hufford A, Ravichandran KS. The phosphatidylserine receptor TIM-4 does not mediate direct signaling. *Curr Biol* 2009; **19**: 346–351.
- 58 Nishi C, Toda S, Segawa K, Nagata S. Tim4- and MerTK-mediated engulfment of apoptotic cells by mouse resident peritoneal macrophages. *Mol Cell Biol* 2014; **34**: 1512–1520.
- 59 Flannagan RS, Canton J, Furuya W, Glogauer M, Grinstein S. The phosphatidylserine receptor TIM4 utilizes integrins as coreceptors to effect phagocytosis. *Mol Biol Cell* 2014; **25**: 1511–1522.
- 60 Park D, Tosello-Tramont AC, Elliott MR, Lu M, Haney LB, Ma Z *et al*. BAI1 is an engulfment receptor for apoptotic cells upstream of the ELMO1/Dock180/Rac module. *Nature* 2007; **450**: 430–434.
- 61 Mori K, Kanemura Y, Fujikawa H, Nakano A, Ikemoto H, Ozaki I *et al*. Brain-specific angiogenesis inhibitor 1 (BAI1) is expressed in human cerebral neuronal cells. *Neurosci Res* 2002; **43**: 69–74.
- 62 Mazaheri F, Breus O, Durdu S, Haas P, Wittbrodt J, Gilmour D *et al*. Distinct roles for BAI1 and TIM-4 in the engulfment of dying neurons by microglia. *Nat Commun* 2014; **5**: 4046.
- 63 Hochreiter-Hufford AE, Lee CS, Kinchen JM, Sokolowski JD, Arandjelovic S, Call JA *et al*. Phosphatidylserine receptor BAI1 and apoptotic cells as new promoters of myoblast fusion. *Nature* 2013; **497**: 263–267.

- 64 Hamoud N, Tran V, Croteau LP, Kania A, Cote JF. G-protein coupled receptor BA13 promotes myoblast fusion in vertebrates. *Proc Natl Acad Sci USA* 2014; **111**: 3745–3750.
- 65 Park SY, Jung MY, Kim HJ, Lee SJ, Kim SY, Lee BH *et al*. Rapid cell corpse clearance by stabilin-2, a membrane phosphatidylserine receptor. *Cell Death Differ* 2008; **15**: 192–201.
- 66 Park SY, Kim SY, Jung MY, Bae DJ, Kim IS. Epidermal growth factor-like domain repeat of stabilin-2 recognizes phosphatidylserine during cell corpse clearance. *Mol Cell Biol* 2008; **28**: 5288–5298.
- 67 Kim S, Bae DJ, Hong M, Park SY, Kim IS. The conserved histidine in epidermal growth factor-like domains of stabilin-2 modulates pH-dependent recognition of phosphatidylserine in apoptotic cells. *Int J Biochem Cell Biol* 2010; **42**: 1154–1163.
- 68 Park SY, Jung MY, Lee SJ, Kang KB, Gratchev A, Riabov V *et al*. Stabilin-1 mediates phosphatidylserine-dependent clearance of cell corpses in alternatively activated macrophages. *J Cell Sci* 2009; **122**: 3365–3373.
- 69 Zhou B, Weigel JA, Fauss L, Weigel PH. Identification of the hyaluronan receptor for endocytosis (HARE). *J Biol Chem* 2000; **275**: 37733–37741.
- 70 Qian H, Johansson S, McCourt P, Smedsrod B, Ekblom M. Stabilins are expressed in bone marrow sinusoidal endothelial cells and mediate scavenging and cell adhesive functions. *Biochem Biophys Res Commun* 2009; **390**: 883–886.
- 71 Kzhyshkowska J, Gratchev A, Goerdts S. Stabilin-1, a homeostatic scavenger receptor with multiple functions. *J Cell Mol Med* 2006; **10**: 635–649.
- 72 Lee SJ, Park SY, Jung MY, Bae SM, Kim IS. Mechanism for phosphatidylserine-dependent erythrophagocytosis in mouse liver. *Blood* 2011; **117**: 5215–5223.
- 73 Murakami Y, Tian L, Voss OH, Margulies DH, Krzewski K, Coligan JE. CD300b regulates the phagocytosis of apoptotic cells via phosphatidylserine recognition. *Cell Death Differ* 2014; **21**: 1746–1757.
- 74 Choi SC, Simhadri VR, Tian L, Gil-Krzewska A, Krzewski K, Borrego F *et al*. Cutting edge: mouse CD300f (CMRF-35-like molecule-1) recognizes outer membrane-exposed phosphatidylserine and can promote phagocytosis. *J Immunol* 2011; **187**: 3483–3487.
- 75 Tian L, Choi SC, Murakami Y, Allen J, Morse HC 3rd, Qi CF *et al*. p85alpha recruitment by the CD300f phosphatidylserine receptor mediates apoptotic cell clearance required for autoimmunity suppression. *Nat Commun* 2014; **5**: 3146.
- 76 Simhadri VR, Andersen JF, Calvo E, Choi SC, Coligan JE, Borrego F. Human CD300a binds to phosphatidylethanolamine and phosphatidylserine, and modulates the phagocytosis of dead cells. *Blood* 2012; **119**: 2799–2809.
- 77 He M, Kubo H, Morimoto K, Fujino N, Suzuki T, Takahashi T *et al*. Receptor for advanced glycation end products binds to phosphatidylserine and assists in the clearance of apoptotic cells. *EMBO Rep* 2011; **12**: 358–364.
- 78 Greenberg ME, Sun M, Zhang R, Febbraio M, Silverstein R, Hazen SL. Oxidized phosphatidylserine-CD36 interactions play an essential role in macrophage-dependent phagocytosis of apoptotic cells. *J Exp Med* 2006; **203**: 2613–2625.
- 79 Fadok VA, Warner ML, Bratton DL, Henson PM. CD36 is required for phagocytosis of apoptotic cells by human macrophages that use either a phosphatidylserine receptor or the vitronectin receptor (alpha v beta 3). *J Immunol* 1998; **161**: 6250–6257.
- 80 Devitt A, Moffatt OD, Raykundalia C, Capra JD, Simmons DL, Gregory CD. Human CD14 mediates recognition and phagocytosis of apoptotic cells. *Nature* 1998; **392**: 505–509.
- 81 Devitt A, Parker KG, Ogden CA, Oldreive C, Clay MF, Melville LA *et al*. Persistence of apoptotic cells without autoimmune disease or inflammation in CD14^{-/-} mice. *J Cell Biol* 2004; **167**: 1161–1170.
- 82 Hanayama R, Tanaka M, Miwa K, Shinohara A, Iwamatsu A, Nagata S. Identification of a factor that links apoptotic cells to phagocytes. *Nature* 2002; **417**: 182–187.
- 83 Akakura S, Singh S, Spataro M, Akakura R, Kim JI, Albert ML *et al*. The opsonin MFG-E8 is a ligand for the alphavbeta5 integrin and triggers DOCK180-dependent Rac1 activation for the phagocytosis of apoptotic cells. *Exp Cell Res* 2004; **292**: 403–416.
- 84 Anderson HA, Maylock CA, Williams JA, Paweletz CP, Shu H, Shacter E. Serum-derived protein S binds to phosphatidylserine and stimulates the phagocytosis of apoptotic cells. *Nat Immunol* 2003; **4**: 87–91.
- 85 Ishimoto Y, Ohashi K, Mizuno K, Nakano T. Promotion of the uptake of PS liposomes and apoptotic cells by a product of growth arrest-specific gene, gas6. *J Biochem* 2000; **127**: 411–417.
- 86 Sasaki T, Knyazev PG, Cheburkin Y, Gohring W, Tisi D, Ullrich A *et al*. Crystal structure of a C-terminal fragment of growth arrest-specific protein Gas6. Receptor tyrosine kinase activation by laminin G-like domains. *J Biol Chem* 2002; **277**: 44164–44170.
- 87 Uehara H, Shacter E. Auto-oxidation and oligomerization of protein S on the apoptotic cell surface is required for Mer tyrosine kinase-mediated phagocytosis of apoptotic cells. *J Immunol* 2008; **180**: 2522–2530.
- 88 Scott RS, McMahon EJ, Pop SM, Reap EA, Caricchio R, Cohen PL *et al*. Phagocytosis and clearance of apoptotic cells is mediated by MER. *Nature* 2001; **411**: 207–211.
- 89 Wu Y, Singh S, Georgescu MM, Birge RB. A role for Mer tyrosine kinase in alphavbeta5 integrin-mediated phagocytosis of apoptotic cells. *J Cell Sci* 2005; **118**: 539–553.
- 90 Todt JC, Hu B, Curtis JL. The scavenger receptor SR-A I/II (CD204) signals via the receptor tyrosine kinase Merck during apoptotic cell uptake by murine macrophages. *J Leukoc Biol* 2008; **84**: 510–518.
- 91 Caberoy NB, Alvarado G, Bigcas JL, Li W. Galectin-3 is a new MerTK-specific eat-me signal. *J Cell Physiol* 2012; **227**: 401–407.
- 92 Wallet MA, Sen P, Flores RR, Wang Y, Yi Z, Huang Y *et al*. MerTK is required for apoptotic cell-induced T cell tolerance. *J Exp Med* 2008; **205**: 219–232.
- 93 Zagorska A, Traves PG, Lew ED, Dransfield I, Lemke G. Diversification of TAM receptor tyrosine kinase function. *Nat Immunol* 2014; **15**: 920–928.
- 94 Paidassi H, Tacnet-Delorme P, Garlatti V, Darnault C, Ghebrehiwet B, Gaboriaud C *et al*. C1q binds phosphatidylserine and likely acts as a multiligand-bridging molecule in apoptotic cell recognition. *J Immunol* 2008; **180**: 2329–2338.
- 95 Ogden CA, deCathelineau A, Hoffmann PR, Bratton D, Ghebrehiwet B, Fadok VA *et al*. C1q and mannose binding lectin engagement of cell surface calreticulin and CD91 initiates macrophagocytosis and uptake of apoptotic cells. *J Exp Med* 2001; **194**: 781–795.
- 96 Ramirez-Ortiz ZG, Pendergraft WF 3rd, Prasad A, Byrne MH, Iram T, Blanchette CJ *et al*. The scavenger receptor SCARF1 mediates the clearance of apoptotic cells and prevents autoimmunity. *Nat Immunol* 2013; **14**: 917–926.
- 97 Iram T, Ramirez-Ortiz Z, Byrne MH, Coleman UA, Kingery ND, Means TK *et al*. Megf10 is a receptor for C1q that mediates clearance of apoptotic cells by astrocytes. *J Neurosci* 2016; **36**: 5185–5192.
- 98 Galvan MD, Foreman DB, Zeng E, Tan JC, Bohlsou SS. Complement component C1q regulates macrophage expression of Mer tyrosine kinase to promote clearance of apoptotic cells. *J Immunol* 2012; **188**: 3716–3723.
- 99 Schlegel RA, Williamson P. Phosphatidylserine, a death knell. *Cell Death Differ* 2001; **8**: 551–563.
- 100 Kim S, Park SY, Kim SY, Bae DJ, Pyo JH, Hong M *et al*. Cross talk between engulfment receptors stabilin-2 and integrin alphavbeta5 orchestrates engulfment of phosphatidylserine-exposed erythrocytes. *Mol Cell Biol* 2012; **32**: 2698–2708.
- 101 Wong K, Valdez PA, Tan C, Yeh S, Hongo JA, Ouyang W. Phosphatidylserine receptor Tim-4 is essential for the maintenance of the homeostatic state of resident peritoneal macrophages. *Proc Natl Acad Sci USA* 2010; **107**: 8712–8717.
- 102 Wu YC, Horvitz HR. *C. elegans* phagocytosis and cell-migration protein CED-5 is similar to human DOCK180. *Nature* 1998; **392**: 501–504.
- 103 Wu YC, Horvitz HR. The *C. elegans* cell corpse engulfment gene *ced-7* encodes a protein similar to ABC transporters. *Cell* 1998; **93**: 951–960.
- 104 Reddien PW, Horvitz HR. CED-2/CrkII and CED-10/Rac control phagocytosis and cell migration in *Caenorhabditis elegans*. *Nat Cell Biol* 2000; **2**: 131–136.
- 105 Liu QA, Hengartner MO. Candidate adaptor protein CED-6 promotes the engulfment of apoptotic cells in *C. elegans*. *Cell* 1998; **93**: 961–972.
- 106 Wu HH, Bellmunt E, Scheib JL, Venegas V, Burkert C, Reichardt LF *et al*. Glial precursors clear sensory neuron corpses during development via Jedi-1, an engulfment receptor. *Nat Neurosci* 2009; **12**: 1534–1541.
- 107 Scheib JL, Sullivan CS, Carter BD. Jedi-1 and MEGF10 signal engulfment of apoptotic neurons through the tyrosine kinase Syk. *J Neurosci* 2012; **32**: 13022–13031.
- 108 Hamon Y, Tromprier D, Ma Z, Venegas V, Pophillat M, Mignotte V *et al*. Cooperation between engulfment receptors: the case of ABCA1 and MEGF10. *PLoS ONE* 2006; **1**: e120.

- 109 Sullivan CS, Scheib JL, Ma Z, Dang RP, Schafer JM, Hickman FE *et al.* The adaptor protein GULP promotes Jedi-1-mediated phagocytosis through a clathrin-dependent mechanism. *Mol Biol Cell* 2014; **25**: 1925–1936.
- 110 Jehle AW, Gardai SJ, Li S, Linsel-Nitschke P, Morimoto K, Janssen WJ *et al.* ATP-binding cassette transporter A7 enhances phagocytosis of apoptotic cells and associated ERK signaling in macrophages. *J Cell Biol* 2006; **174**: 547–556.
- 111 Hamon Y, Broccardo C, Chambenoit O, Luciani MF, Toti F, Chaslin S *et al.* ABC1 promotes engulfment of apoptotic cells and transbilayer redistribution of phosphatidyserine. *Nat Cell Biol* 2000; **2**: 399–406.
- 112 Yvan-Charvet L, Pagler TA, Seimon TA, Thorp E, Welch CL, Witztum JL *et al.* ABCA1 and ABCG1 protect against oxidative stress-induced macrophage apoptosis during efferocytosis. *Circ Res* 2010; **106**: 1861–1869.
- 113 Kinchen JM, Cabello J, Klingele D, Wong K, Feichtinger R, Schnabel H *et al.* Two pathways converge at CED-10 to mediate actin rearrangement and corpse removal in *C. elegans*. *Nature* 2005; **434**: 93–99.
- 114 Park SY, Kang KB, Thapa N, Kim SY, Lee SJ, Kim IS. Requirement of adaptor protein GULP during stabilin-2-mediated cell corpse engulfment. *J Biol Chem* 2008; **283**: 10593–10600.
- 115 Su HP, Nakada-Tsukui K, Tosello-Tramont AC, Li Y, Bu G, Henson PM *et al.* Interaction of CED-6/GULP, an adapter protein involved in engulfment of apoptotic cells with CED-1 and CD91/low density lipoprotein receptor-related protein (LRP). *J Biol Chem* 2002; **277**: 11772–11779.
- 116 Park SY, Kim SY, Kang KB, Kim IS. Adaptor protein GULP is involved in stabilin-1-mediated phagocytosis. *Biochem Biophys Res Commun* 2010; **398**: 467–472.
- 117 Albert ML, Kim JI, Birge RB. alphavbeta5 integrin recruits the CrkII-Dock180-rac1 complex for phagocytosis of apoptotic cells. *Nat Cell Biol* 2000; **2**: 899–905.
- 118 Gumienny TL, Brugnera E, Tosello-Tramont AC, Kinchen JM, Haney LB, Nishiwaki K *et al.* CED-12/ELMO, a novel member of the CrkII/Dock180/Rac pathway, is required for phagocytosis and cell migration. *Cell* 2001; **107**: 27–41.
- 119 Wu YC, Tsai MC, Cheng LC, Chou CJ, Weng NY. *C. elegans* CED-12 acts in the conserved crkII/DOCK180/Rac pathway to control cell migration and cell corpse engulfment. *Dev Cell* 2001; **1**: 491–502.
- 120 deBakker CD, Haney LB, Kinchen JM, Grimsley C, Lu M, Klingele D *et al.* Phagocytosis of apoptotic cells is regulated by a UNC-73/TRIO-MIG-2/RhoG signaling module and armadillo repeats of CED-12/ELMO. *Curr Biol* 2004; **14**: 2208–2216.
- 121 Hurwitz ME, Vanderzalm PJ, Bloom L, Goldman J, Garriga G, Horvitz HR. Abl kinase inhibits the engulfment of apoptotic [corrected] cells in *Caenorhabditis elegans*. *PLoS Biol* 2009; **7**: e99.
- 122 Yoon KW, Byun S, Kwon E, Hwang SY, Chu K, Hiraki M *et al.* Control of signaling-mediated clearance of apoptotic cells by the tumor suppressor p53. *Science* 2015; **349**: 1261669.
- 123 Park D, Han CZ, Elliott MR, Kinchen JM, Trampont PC, Das S *et al.* Continued clearance of apoptotic cells critically depends on the phagocyte Ucp2 protein. *Nature* 2011; **477**: 220–224.
- 124 Mukundan L, Odegaard JI, Morel CR, Heredia JE, Mwangi JW, Ricardo-Gonzalez RR *et al.* PPAR-delta senses and orchestrates clearance of apoptotic cells to promote tolerance. *Nat Med* 2009; **15**: 1266–1272.
- 125 Roszer T, Menendez-Gutierrez MP, Lefterova MI, Alameda D, Nunez V, Lazar MA *et al.* Autoimmune kidney disease and impaired engulfment of apoptotic cells in mice with macrophage peroxisome proliferator-activated receptor gamma or retinoid X receptor alpha deficiency. *J Immunol* 2011; **186**: 621–631.
- 126 A-Gonzalez N, Bensinger SJ, Hong C, Beceiro S, Bradley MN, Zelcer N *et al.* Apoptotic cells promote their own clearance and immune tolerance through activation of the nuclear receptor LXR. *Immunity* 2009; **31**: 245–258.
- 127 Ipseiz N, Uderhardt S, Scholtyssek C, Steffen M, Schabbauer G, Bozec A *et al.* The nuclear receptor Nr4a1 mediates anti-inflammatory effects of apoptotic cells. *J Immunol* 2014; **192**: 4852–4858.
- 128 Poon IK, Lucas CD, Rossi AG, Ravichandran KS. Apoptotic cell clearance: basic biology and therapeutic potential. *Nat Rev Immunol* 2014; **14**: 166–180.



This work is licensed under a Creative Commons Attribution-NonCommercial-NoDerivs 4.0 International License. The images or other third party material in this article are included in the article's Creative Commons license, unless indicated otherwise in the credit line; if the material is not included under the Creative Commons license, users will need to obtain permission from the license holder to reproduce the material. To view a copy of this license, visit <http://creativecommons.org/licenses/by-nc-nd/4.0/>