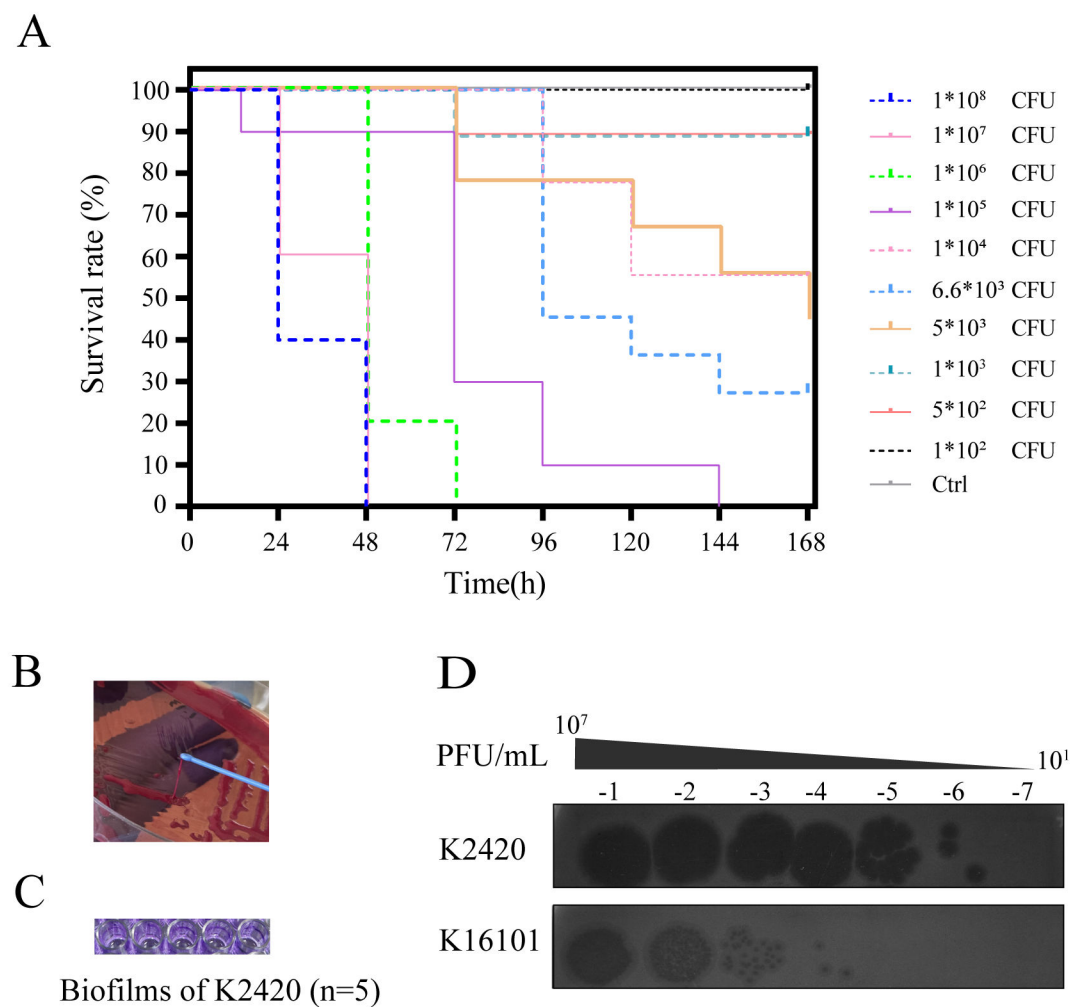
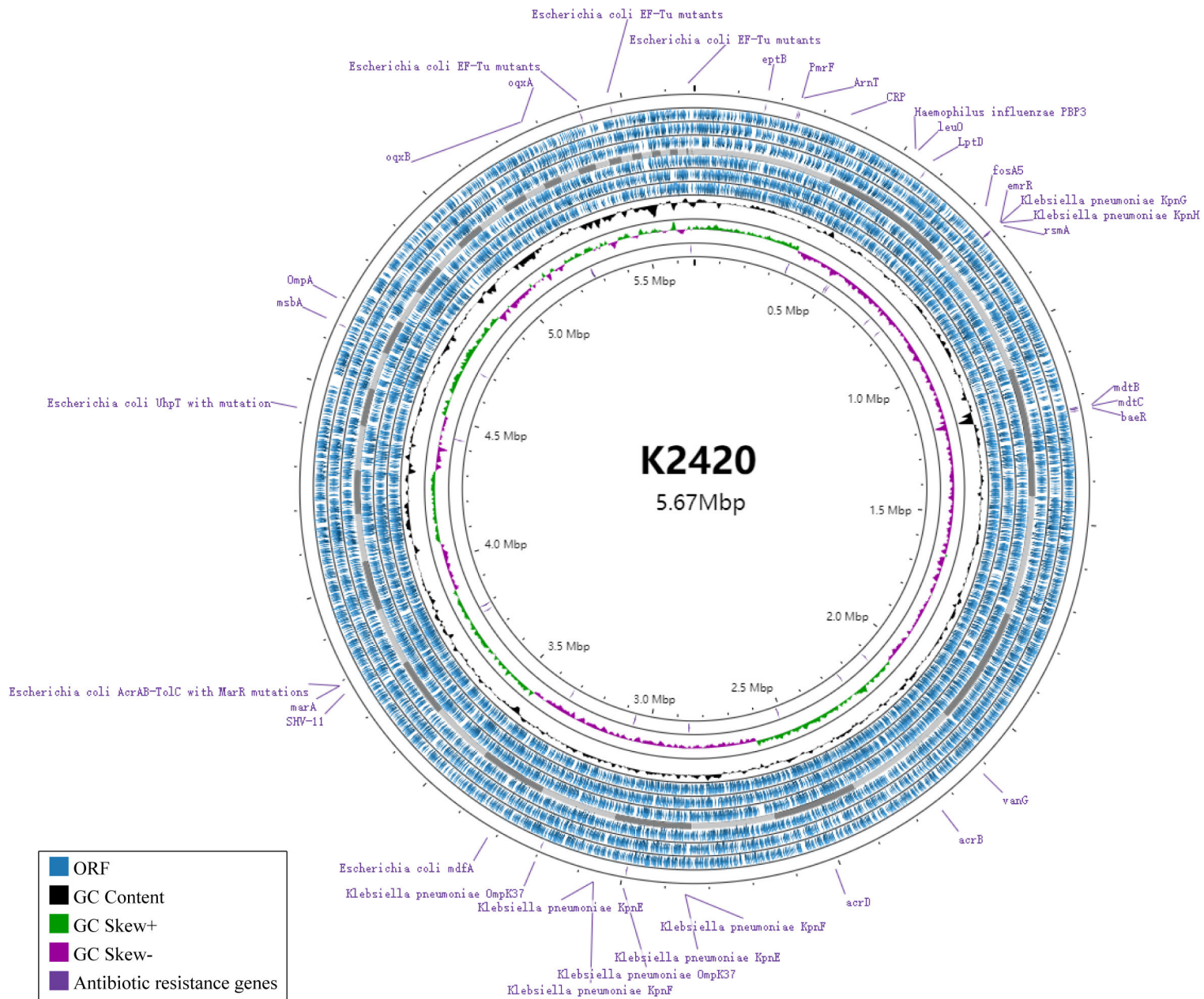


Figure S1



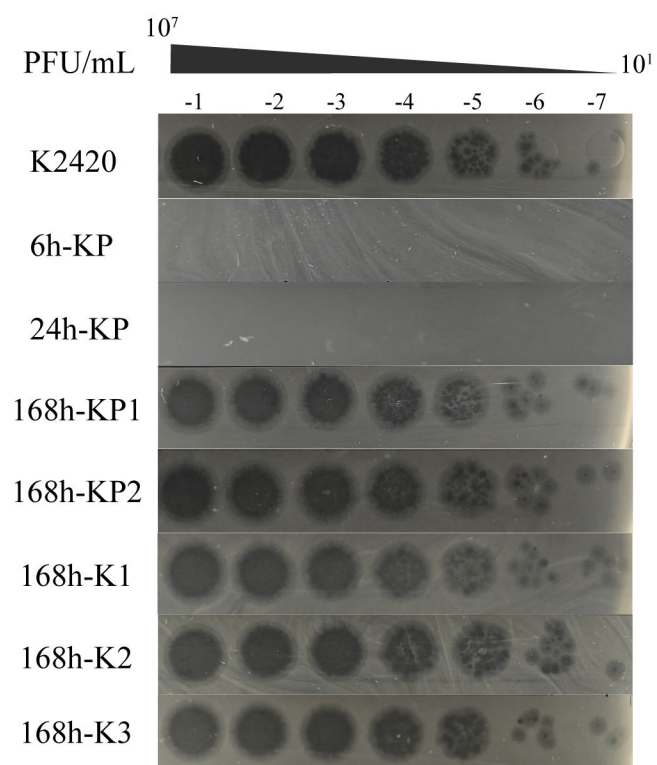
(A) Survival rates of *K. pneumoniae*-infected mice after intratracheal injections. (B) String test results for K2420. (C) Biofilm formation by K2420, visualized using crystal violet staining. (D) Lytic efficiency of PK2420 against *K. pneumoniae* strains K2420 and K16101.

Figure S2



### Analysis of K2420 genome and antibiotic resistance genes.

Figure S3



Phage PK2420 sensitivity analysis for *K. pneumoniae* isolates.