



Since January 2020 Elsevier has created a COVID-19 resource centre with free information in English and Mandarin on the novel coronavirus COVID-19. The COVID-19 resource centre is hosted on Elsevier Connect, the company's public news and information website.

Elsevier hereby grants permission to make all its COVID-19-related research that is available on the COVID-19 resource centre - including this research content - immediately available in PubMed Central and other publicly funded repositories, such as the WHO COVID database with rights for unrestricted research re-use and analyses in any form or by any means with acknowledgement of the original source. These permissions are granted for free by Elsevier for as long as the COVID-19 resource centre remains active.



## Review article

# The mental health impact of the covid-19 pandemic on healthcare workers, and interventions to help them: A rapid systematic review

Ashley Elizabeth Muller<sup>a,\*</sup>, Elisabet Vivianne Hafstad<sup>a</sup>, Jan Peter William Himmels<sup>a</sup>, Geir Smedslund<sup>a</sup>, Signe Flottorp<sup>a</sup>, Synne Øien Stensland<sup>b</sup>, Stijn Stroobants<sup>c</sup>, Stijn Van de Velde<sup>a</sup>, Gunn Elisabeth Vist<sup>a</sup>

<sup>a</sup> Norwegian Institute of Public Health, Oslo, Norway

<sup>b</sup> Norwegian Centre for Violence and Traumatic Stress Studies, Research and Communication Unit for Musculoskeletal Health (FORMI), Division of Clinical Neuroscience, Oslo University Hospital, Oslo, Norway

<sup>c</sup> Humanitarian Services, Belgian Red Cross, Mechelen, Belgium

## ARTICLE INFO

## Keywords:

Occupational health  
Social support  
Preferences

## ABSTRACT

The covid-19 pandemic has heavily burdened healthcare systems throughout the world. We performed a rapid systematic review to identify, assess and summarize research on the mental health impact of the covid-19 pandemic on HCWs (healthcare workers). We utilized the Norwegian Institute of Public Health's *Live map of covid-19 evidence* on 11 May and included 59 studies. Six reported on implementing interventions, but none reported on effects of the interventions. HCWs reported low interest in professional help, and greater reliance on social support and contact. Exposure to covid-19 was the most commonly reported correlate of mental health problems, followed by female gender, and worry about infection or about infecting others. Social support correlated with less mental health problems. HCWs reported anxiety, depression, sleep problems, and distress during the covid-19 pandemic. We assessed the certainty of the estimates of prevalence of these symptoms as very low using GRADE. Most studies did not report comparative data on mental health symptoms before the pandemic or in the general population. There seems to be a mismatch between risk factors for adverse mental health outcomes among HCWs in the current pandemic, their needs and preferences, and the individual psychopathology focus of current interventions.

## 1. Introduction

The covid-19 pandemic has heavily burdened, and in many cases overwhelmed, healthcare systems (Armocida et al., 2020; Xie et al., 2020) including healthcare workers. The WHO has emphasized the extremely high burden on healthcare workers, and called for action to address the immediate needs and measures needed to save lives and prevent a serious impact on physical and mental health of healthcare workers (WHO, 2020).

Previous viral outbreaks have shown that frontline and non-frontline healthcare workers are at increased risk of infection and other adverse physical health outcomes (Xiao et al., 2020). Furthermore, healthcare workers reported mental health problems putatively associated with healthcare workers' occupational activities during and up until years after epidemics, including symptoms of post-traumatic stress, burnout, depression and anxiety (Lancee et al., 2008; Maunder et al., 2006; Park et al., 2018). Likewise, reports of the mental

toll on healthcare workers have persistently appeared during the current global health crisis (Huang et al., 2020; Tsamakis et al., 2020; Liu et al., Liu et al., 2020).

Several reviews have already been conducted on healthcare workers' mental health in the covid-19 pandemic, with search dates up to May 2020. Pappa et al. (2020) identified thirteen studies in a search on 17 April 2020 and pooled prevalence rates; they reported that more than one of every five healthcare workers suffered from anxiety and/or depression; nearly two in five reported insomnia. Vindegaard and Eriksen Benros (2020) review, searching on 10 May 2020, identified twenty studies of healthcare workers in a subgroup analysis, and their narrative summary concluded that healthcare workers generally reported more anxiety, depression, and sleep problems compared with the general population.

In the face of a prolonged crisis such as the pandemic, sustainability of the healthcare response fully relies on its ability to safeguard the health of responders: the healthcare workers (Remuzzi, 2020;

\* Corresponding author.

E-mail address: [aemu@fhi.no](mailto:aemu@fhi.no) (A.E. Muller).

<https://doi.org/10.1016/j.psychres.2020.113441>

Received 5 July 2020; Received in revised form 27 August 2020; Accepted 29 August 2020

Available online 01 September 2020

0165-1781/ © 2020 The Authors. Published by Elsevier B.V. This is an open access article under the CC BY license (<http://creativecommons.org/licenses/by/4.0/>).

Godlee, 2020). Yet the recent findings of psychological distress among healthcare workers might indicate that the healthcare system is currently unable to effectively help the helpers. Understanding the risks and mental health impact(s) that healthcare workers experience, and identifying possible interventions to address adverse effects, is invaluable. Our main aim was to perform an updated and more comprehensive rapid systematic review to identify, assess and summarize available research on the mental health impact of the covid-19 pandemic on healthcare workers, including a) changes over time, b) prevalence of mental health problems and risk/resilience factors, c) strategies and resources used by healthcare providers to protect their own mental health, d) perceived need and preferences for interventions, and e) healthcare workers' understandings of their own mental health during the pandemic. Our second aim was to describe the interventions assessed in the literature to prevent or reduce negative mental health impacts on healthcare workers who are at work during the covid-19 pandemic.

## 2. Methods

We conducted a rapid systematic review according to the methods specified in our protocol, published on our institution's website (Muller et al., 2020).

### 2.1. Inclusion criteria

We included any type of study about any type of healthcare worker during the covid-19 pandemic, with outcomes relating to their mental health. We extracted information about interventions aimed at preventing or reducing negative mental health impacts on healthcare workers; we were therefore interested in quantitative studies examining prevalence of problems and effects of interventions as well as qualitative studies examining experiences. We had no restrictions related to study design, methodological quality, or language.

### 2.2. Literature search and article selection

We identified relevant studies by searching the Norwegian Institute of Public Health's (NIPH's) *Live map of covid-19 evidence* (<https://www.fhi.no/en/qk/systematic-reviews-hta/map/>) and database on 11 May 2020, as described in our protocol (Muller et al., 2020). The live map and database contained 20,738 references screened for covid-19 relevance containing primary, secondary, or modelled data. Two researchers independently categorized these references according to topic (seven main topics, 52 subordinate topics), population (41 available groups), study design, and publication type. We identified references categorized to the population "Healthcare workers", and to the topic "Experiences and perceptions, consequences; social, political, economic aspects". In addition, we identified references by searching (title/abstract) in the live map's database, using the keywords: emo\*, psych\*, stress\*, anx\*, depr\*, mental\*, sleep, worry, somatoform, and somatic symptom disorder. We screened all identified references specifically for the inclusion criteria for this systematic review.

The protocol of the *Live map of covid-19 evidence* describes the methodology of the map and database (Vist et al., 2020). The methodology, including the search, has developed dynamically since March 2020. We performed our first search for the map 12.03.2020 and we have identified references published since 01.12.2019 by searching:

- PubMed (National Library of Medicine), from 01.12.2019 - 03.05.2020
- Embase (Ovid), between 01.12.2019 - 27.03.2020
- Centers for Disease Control and Prevention (CDC), 01.12.2019 - 11.05.2020

The last included search for this review was conducted on 11 May

2020. The search strategy is presented in Appendix 1.

### 2.3. Data extraction and methodological quality assessment

We developed a data extraction form to collect data on country and setting, participants, exposure to covid-19, intervention if relevant, and outcomes related to mental health. We extracted data on prevalence of mental health problems as well as correlates (i.e. risk/resilience factors); strategies implemented or accessed by healthcare worker to address their own mental health; perceived need and preferences related to interventions aimed at preventing or reducing negative mental health consequences; and experience and understandings of mental health and related interventions. One researcher (AEM) extracted data and another checked her extraction. Two researchers (AEM, SF/GEV) independently assessed the methodological quality of systematic reviews using the AMSTAR tool (Shea et al., 2017) and of qualitative studies using the CASP checklist (Critical Appraisal Skills Programme (CASP) 2020). One researcher (AEM) assessed the quality of cross-sectional studies using either the JBI Prevalence or the JBI Cross-sectional Analytical checklist, and longitudinal studies using the JIBI Cohort checklist (Johanna Briggs Institute 2020). Results of these checklists are presented in Appendix 2 in the standard risk of bias format.

### 2.4. Data presentation and analyses

We summarized outcomes narratively. We describe interventions and outcomes based on the information provided in the studies. When studies presented prevalence rates out mental health outcomes in figures without numbers, we extracted numbers using an online software (<https://apps.automeris.io/wpd/>). We presented mean prevalence rates as box-and-whisker plots. We decided not to perform a quantitative summary of the associations between the various correlates and mental health factors, due to a combination of heterogeneity in assessment measures and lack of control groups, and an overarching lack of descriptions necessary to confirm sufficient homogeneity. Our included studies not only varied greatly from one another, they most often did not report sufficient information regarding inclusion criteria, population, setting, and exposure to assess potential clinical heterogeneity. We graded the certainty of the evidence using the GRADE approach (Grading of Recommendations Assessment, Development, and Evaluation (Guyatt et al., 2011)).

## 3. Results

### 3.1. Results of the literature search

As of 11 May 2020, the *Live map of covid-19 evidence* project had screened 20,738 studies for covid-19 relevance, and categorized all studies with empirical data. We identified 557 studies coded to the topic *Experiences*, and 314 coded to *Healthcare workers*. Our database keyword search identified a further 218 relevant studies. Of a total of 1089 identified studies, 59 met our inclusion criteria for this systematic review (Huang et al., 2020; Abdessater et al., 2020a,b; Ahmed et al., 2020; Behnam et al., 2020; Bohlken et al., 2020; Cai et al., 2020; Cai et al., 2019; Cao et al., 2020; Chen et al., 2020a,b; Chew et al., 2020; Chung and Yeung, 2020; Davico et al., 2020; Foley et al., 2020; Gautam et al., 2020; Guo et al., 2020; Hong et al., 2020; Hu et al., 2020; Jiang et al., 2020; Kang et al., 2020; Ko et al., 2020; Lai et al., 2019; Li et al., 2020a,b; Liang et al., 2020; Liu et al., 2020a,b,c,d; Louie et al., 2020; Lu et al., 2020; Lv et al., 2020; Martin, 2020; Mo et al., 2020; Mohindra et al., 2020; Naser, 2020; Nemati et al., 2020; Ni et al., 2020; Pu et al., 2020; Rajkumar et al., 2020; Schulte et al., 2020; Shen et al., 2020a,b; Simpson et al., 2020; Sun et al., 2020; Tan et al., 2020; Wu et al., 2020a,b; H Xiao et al., 2020, 70; Yifan et al., 2020; Yin and Zeng, 2020; Yuan et al., 2020; Zhang et al., 2020a,b,c; Zhu et al.,

**Table 1**  
Summary of study characteristics.

	N (59 total)	%
<u>Country (multiple allowed)</u>		
People's Republic of China	40	67.8%
France	2	3.4%
Germany	2	3.4%
India	2	3.4%
Iran	4	6.8%
Italy	2	3.4%
Singapore	2	3.4%
USA	3	6.8%
Other <sup>a</sup>	3	5.1%
Not applicable	3	5.1%
<u>Study design</u>		
Survey	46	78.0%
Interviews	5	8.5%
Cohort/longitudinal	2	3.4%
Systematic review	2	3.4%
Other	4	6.8%
<u>Healthcare setting (multiple allowed)</u>		
Hospital	42	71.2%
Specialist health services	2	3.4%
Other	3	5.1%
Not specified	21	35.6%
<u>Population (multiple allowed)</u>		
Allied health care workers	3	5.1%
Clinical administration	8	13.6%
Doctors	33	55.9%
Emergency staff	1	1.7%
Medical students	2	3.4%
Nurses	31	52.5%
Other	13	22.0%
Not specified	19	32.2%
<u>Exposure/intervention(multiple allowed)</u>		
Frontline	40	67.8%
Not frontline	26	44.1%
Not specified	10	16.9%
Intervention aimed at mental health	6	10.2%
Other	2	3.4%

<sup>a</sup> Countries sampled by one study: Australia, Bahrain, Bulgaria, Canada, Denmark, Egypt, Finland, France, Hungary, Ireland, Israel, Kuwait, Malaysia, Mexico, New Zealand, Pakistan, Poland, Republic of the Congo, Romania, Saudi Arabia, South Africa, Switzerland, Taiwan, Turkey, United Arab Emirates, United Kingdom.

2020a,b) (Fig. 1).

### 3.2. Description of studies

Fifty-nine studies were included. Table 1 displays their summarized characteristics, while Appendix 3 displays characteristics of the individual studies. A total of 54,707 participants were drawn from at least 34 separate countries across the studies (one study reported participants came from 91 countries, but did not specify these). The People's Republic of China was the single most common setting (40 studies and 44,540 participants), followed by Iran (four studies). Setting was not applicable for the two systematic reviews and the review of online mental health surveys.

The majority of studies (46) were cross-sectional surveys; two studies reported surveys administered twice over time; five were interview studies, of which three were analyzed qualitatively and two quantitatively; and four were other designs, including a case series and a study that searched within a database of existing online surveys. We also identified two systematic reviews (Gautam et al., 2020; Rajkumar et al., 2020), which included five primary studies (Huang et al., 2020; Chen et al., 2020a; Lai et al., 2019; Li et al., 2020b; Xiao et al., 2020b).

The studies reported on healthcare workers working in different settings: 42 studies reported on health care workers in hospitals, two studies were conducted in specialist health services outside hospitals, and three studies in other settings, while 21 studies did not specify the

healthcare setting or only partially described multiple settings. No studies reported on nursing homes or primary care settings. In 40 studies, participants were frontline workers, while 26 studies reported on non-frontline workers. Frontline or non-frontline activities were unclear in ten studies.

Six studies reported on interventions to reduce mental health problems.

More than half of the studies included nurses (31) and/or doctors (33). Study sizes ranged from a case study with three participants to a survey of 11,118 participants.

### 3.3. Methodological quality assessment of included studies

Appendix 2 displays the methodological quality assessments of individual studies. Overall assessments are displayed in Appendix 3, the description of included studies. Twenty-five studies were assessed as having low methodological quality (including eleven of 17 cross-sectional studies that provided only prevalence data), twelve medium, and sixteen high. The most common methodological weaknesses across all studies arose from insufficient reporting: samples, settings, and recruitment procedures were often not described thoroughly. While both systematic reviews had low scores on the AMSTAR, all three qualitative studies were assessed on the CASP checklist as valuable. Four studies had designs that we did not assess for quality: Jiang et al. (2020), and Schulte et al. (2020) reported on the development or uptake of mental health interventions; Liu et al. (2020b) surveyed mental health questionnaires available online in China as of 8 February 2020; and Martin (2020) presented three case histories.

### 3.4. Mental health interventions

Six studies reported on the implementation of interventions to prevent or reduce mental health problems caused by the covid-19 pandemic among healthcare workers. These interventions can be loosely divided into those targeting organizational structures, those facilitating team/collegial support, and those addressing individual complaints or strategies.

Two interventions involved organizational adjustments. The first intervention was reported on by two studies (Cao et al., 2020; Hong et al., 2020). Hong et al. (2020) called it a "comprehensive psychological intervention" for frontline workers undergoing a mandatory two-week quarantine in a vocational resort, following two- to three-week hospital shifts. The quarantine itself was also described as part of the intervention, explicitly intended "to alleviate worries about the health of one's family". Other elements included shortened shifts; involvement of the labor union to provide support to healthcare workers' families; and a telephone-based hotline that allowed healthcare workers to speak to trained psychiatrists or psychologists. This hotline had already been available to healthcare workers for four hours per week prior to the pandemic, but was made available for twelve hours, seven days a week. Chen et al. (2020a) reported a second intervention that attempted to address individual complaints and facilitate collegial support. A telephone hotline was set up to provide immediate psychological support, along with a medical team that provided online courses to help healthcare workers handle psychological problems, and group-based activities to release stress. However, uptake was low, and when researchers conducted interviews with the healthcare workers to understand this, healthcare workers reported needing personal protective equipment and rest, not time with a psychologist. They also requested help addressing their patients' psychological distress. In response, the hospital developed more guidance on personal protective equipment, provided a rest space, and provided training on how to address patients' distress.

Schulte et al. (2020) targeted collegial support and building individual strategies through one-hour video "support calls" for healthcare workers called in from their homes, to describe the impact of the

pandemic on their lives, to reflect on their strengths, and to brainstorm coping strategies. This intervention was implemented as a response to the hospital redeploying pediatric staff to work as covid-19 frontline staff, and reorganizing pediatric space to accommodate more pediatric and adult covid-19 patients.

The remainder of the interventions focused on individual complaints or strategies. [Chung and Yeung \(2020\)](#) intervention was an online questionnaire available through a hospital mobile phone application that allowed healthcare workers to request psychological support from a psychiatric nurse, and to fill out a short depression screening measure. [Jiang et al. \(2020\)](#) intervention began as an onsite, in-person psychological crisis intervention, in which psychiatrists and psychologists provided psychological care to healthcare workers. After in-person care was recognized as a transmission risk to the psychiatrists and psychologists, the intervention was developed to allow for remote provision.

### 3.5. Changes in mental health during the pandemic

None of the studies that implemented mental health interventions reported on the effects of the interventions on healthcare workers. The only data available to approximate the impact of the pandemic on the mental health of healthcare workers came from two longitudinal survey studies reporting on changes over time, both of low methodological quality.

[Lv et al. \(2020\)](#) surveyed healthcare workers before and during the outbreak, reporting no further information about the timeline. The study included both those working on the frontline and those with unclear exposure to covid-19. However, it is unclear whether respondents were the same at both time points. The prevalence of anxiety, depression, and insomnia increased over time, whether mild, moderate, moderate to severe, or severe (see [Fig. 2](#)). During the outbreak, one out of every four healthcare workers reported at least mild anxiety, depression, or insomnia.

[Yuan et al. \(2020\)](#) also administered a survey twice to 939 respondents during the pandemic (in February 2020), with two weeks between the surveys, and no attrition reported. Each respondent answered the same questions: *I feel worried, I feel anxious, fidgeting and not knowing what to do, I feel frightened, I feel nervous and uneasy, I don't think I can succeed even if I try hard, and I've been smoking or drinking a lot lately*. The authors presented the changes per item after two weeks, rather than answers at both time points, and the answer scale was not reported. Worry worsened for 30% of participants, anxiety for 12%, fidgeting for 9%, fear for 15%, feeling nervous and uneasy for 13%, not thinking one can succeed for 4%, and an increase in smoking and drinking for only 1%. The proportion reporting improvement was similar for fidgeting, fear, and feeling nervous and uneasy, and more improved in not thinking one can succeed and for a reduction in smoking and drinking.

Two cross-sectional studies reported healthcare workers' self-reported changes in mental health; both were also of low methodological quality due to insufficient reporting. In [Behnam et al. \(2020\)](#), twelve Iranian psychiatry residents were re-deployed to work one frontline shift. Half of the residents reported that they experienced more distress after this shift. [Abdessater et al., 2020a,b](#) studied 275 urology residents not working on the frontline. When asked to report the level of stress caused by covid-19, 56% reported a medium to high amount of stress, and the remaining reported none to low. Less than 1% had initiated a psychiatric treatment during the pandemic.

A third cross-sectional study ([Xu et al., 2020](#)), also of low methodological quality, surveyed 60 healthcare workers in China in February, during the "outbreak period". A different cohort of 60 healthcare workers were surveyed in March, during the "non-epidemic outbreak period". The healthcare workers in to the second phase of the survey reported less symptoms of anxiety and depression, and higher health-related quality of life.

### 3.6. Prevalence of mental health problems, and risk and resilience factors

Twenty-nine studies reported prevalence data of mental health variables as proportions or percentages. (Seventeen additional studies reported data as average scores on various instruments, and we did not extract this data.) We present box-and-whisker plots in [Fig. 3](#) to show the distribution of anxiety, depression, distress, and sleeping problems among the healthcare workers investigated in the 29 studies, using the authors' own methods of assessing these outcomes

For anxiety, there were data from 22 studies. The percentage of healthcare workers with anxiety ranged from 9% to 90% with a median of 24%. For depression, there were data from 19 studies. The percentage with depression ranged from 5% to 51%, with a median of 21%. For sleep problems, there were data from six studies. The percentage with sleeping problems ranged from 34% to 65%, with a median of 37%. For distress, there were data from 13 studies. The percentage with distress ranged from 7% to 97%, with a median of 37%. Only one study ([Shen et al., 2020](#)) reported prevalence of somatic symptoms, including decreased appetite or indigestion (59%) and fatigue (55%).

The summary of findings table below displays median prevalence rates across the studies contributing to each mental health outcome.

We assessed the certainty of the reported results of levels of anxiety, depression, distress and sleep problems in health care workers during the covid-19 pandemic using the GRADE approach to be very low, as shown in [Table 2](#), due to high risk of bias, large heterogeneity and imprecision.

Twenty-two studies reported one or more variables associated with mental health problems in health care workers during the pandemic. The most common risk factors correlated with increased risk of mental health problems were exposure to covid-19 patients ([Abdessater et al., 2020a](#); [Davico et al., 2020](#); [Lai et al., 2019](#); [Lu et al., 2020](#); [Ni et al., 2020](#); [Zhang et al., 2020a,c](#)), being a woman ([Huang et al., 2020](#); [Davico et al., 2020](#); [Lai et al., 2019](#); [SX Zhang et al., 2020, WR 76](#); [J Zhu et al., 2020](#)), and worry about being infected ([Cai et al., 2020](#); [Lu et al., 2020](#); [Zhang et al., 2020b,c](#)). In three studies, worrying about family members being infected was a risk factor ([Cai et al., 2020](#); [Louie et al., 2020](#)) ([G Li et al., 2020](#)). The 22 studies mentioned a number of other factors once each, that we do not report here.

The most commonly reported protective factor associated with reduced risk of mental health problems was having social support ([X Liu et al., 2020](#); [Ni et al., 2020](#); [Xiao et al., 2020a,b](#)). Two studies directly measured self-perceived resilience. [Bohken et al. \(2020\)](#) asked their sample of psychiatrists and neurologists to assess how resilient they were on a Likert scale from 1 to 5 ("not applicable" to "completely applicable"), and 86% selected the two highest categories. [Cai et al. \(2019\)](#) compared experienced frontline workers with inexperienced frontline workers, and found that inexperienced workers scored lower on total resilience on the Connor-David resilience scale as well as within each of three subscales, and had more mental health symptoms. Inexperienced workers were also younger and had less social support available to them.

### 3.7. Strategies and resources used

Ten studies reported that healthcare workers utilized other resources or had individual strategies to address their own mental health during the pandemic, separate from formal interventions.

Six studies reported that healthcare workers utilized support from family/friends during the pandemic. "Family" was the most common stress coping mechanism utilized by [Louie et al. \(2020\)](#) sample (78.5%). Sixty-five percent of [Sun et al. \(2020\)](#) sample sought social support to relieve stress. Forty-three percent of [Cai et al. \(2020\)](#) sample rated social support from friends and family as a "very important" strategy, on a scale from "not at all" to "very important"; a similar proportion of [Louie et al.'s](#) sample said they used telecommunication with friends as a coping mechanism (43.8%). [Cao et al. \(2020\)](#), reporting themes from

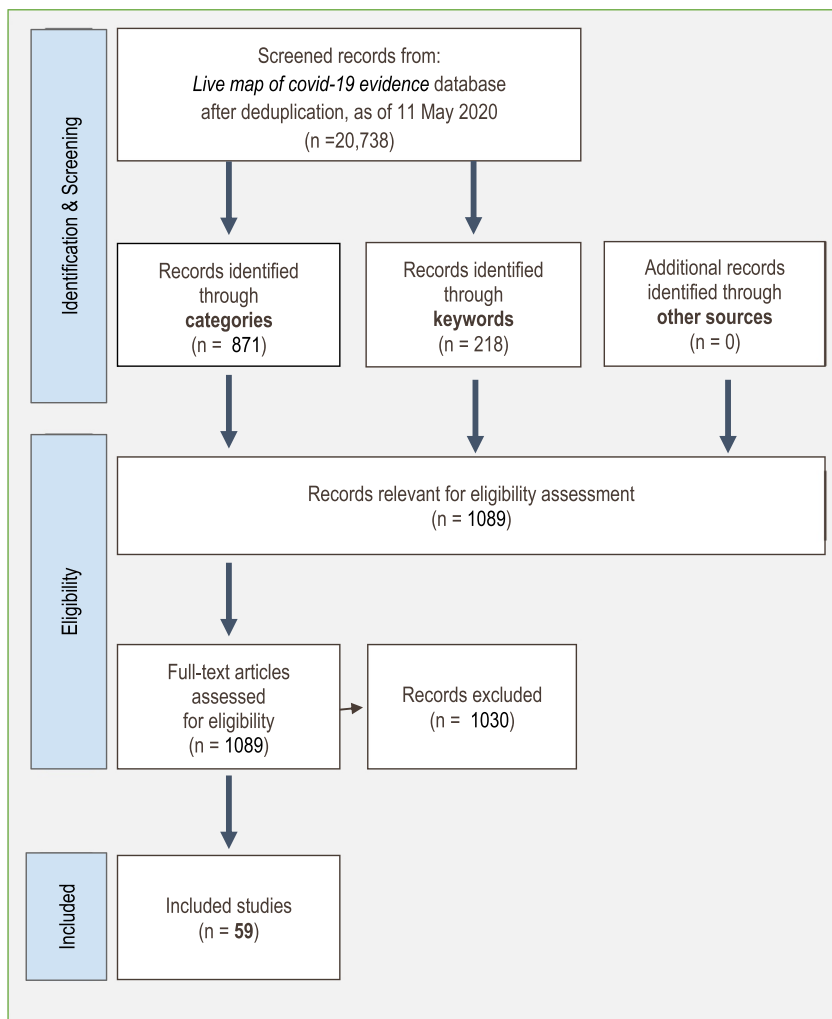


Fig. 1. Live evidence map flow diagram of study inclusion.

interviews, wrote that telecommunication with family members was the most frequently utilized coping mechanism, while a majority identified talking with friends as important. Mohindra et al. (2020) narrative report of an unreported amount of interviews also identified support from family and colleagues as a main emotional motivational factor for healthcare workers to continue working.

Professional and informal help were strategies reported by two

studies each. A minority of healthcare workers in Cai et al. (2020) said that seeking help from a psychologist was important. Counselling, therapy, or other professional interventions were used by 18–36% of Kang et al. (2020) and Liu et al. (2020d) samples, respectively. Half of Kang et al.’s sample used psychological resources available through the media, and 36% used other psychological materials. Less than one third of Zhang et al. (2020a) sample reported that psychological support from

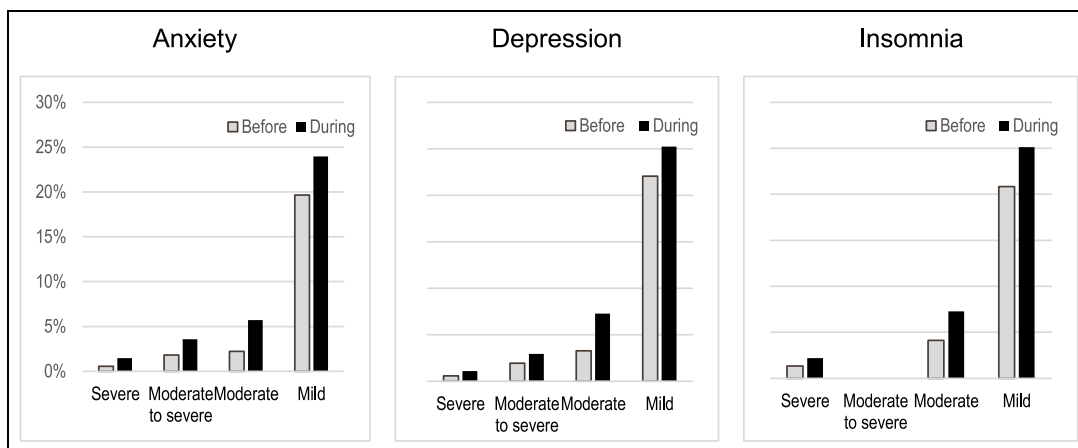


Fig. 2. Anxiety, depression, and insomnia before and during the pandemic among Lv et al.’s sample of 8028 Chinese healthcare workers before and during the pandemic.

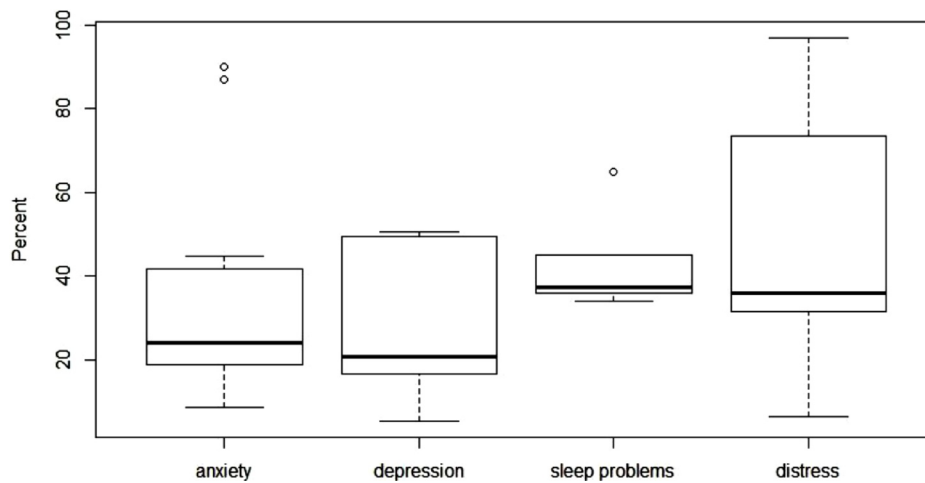


Fig. 3. Boxplots of prevalence of anxiety, depression, sleep problems, and distress.

news or social media was helpful, although the amount who utilized news or social media was not reported.

Coping and self-care styles was an emergent theme in Sun et al. (2020) qualitative study of nurses' psychological experience

of treating patients with covid-19, and subsequently described quantitatively. All nurses utilized active psychological defense mechanisms (such as mindfulness), or more passive strategies (such as distraction). Seventy percent made "life adjustments" such as sleeping, exercising, or

Table 2  
Summary of findings table

**Patient or population:** Healthcare workers, both frontline and non-frontline  
**Country:** China (24 studies). Germany (1 study), France (1 study), Italy (1 study), multiple (2)  
**Exposure:** Covid-19 pandemic

Outcomes	Absolute measure (range)		№ of participants (studies)	Certainty of the evidence (GRADE)	Comments
	Risk before the covid-19 pandemic	Risk during the covid-19 pandemic			
Anxiety	24%	Median 24% (9 to 90%)	47,630 (22 observational studies)	⊕○○○ VERY LOW <sup>a,b,c</sup>	Only one study provided data before the pandemic.
Depression	28%	Median 21% (5 to 51%)	35,219 (19 observational studies)	⊕○○○ VERY LOW <sup>a,b,c</sup>	Only one study provided data before the pandemic.
Distress	Unreported	Median 37% (7 to 97%)	20,391 (13 observational studies)	⊕○○○ VERY LOW <sup>a,b,c</sup>	
Sleep problems	26%	Median 37% (34 to 65%)	9,105 (6 observational studies)	⊕○○○ VERY LOW <sup>a,b,c</sup>	Only one study provided data before the pandemic.

Reasons for downgrading certainty: <sup>a</sup> High risk of bias, <sup>b</sup> Large amount of heterogeneity, <sup>c</sup> Imprecision

**GRADE Working Group grades of evidence**

**High certainty:** We are very confident that the true effect lies close to that of the estimate of the effect

**Moderate certainty:** We are moderately confident in the effect estimate: The true effect is likely to be close to the estimate of the effect, but there is a possibility that it is substantially different

**Low certainty:** Our confidence in the effect estimate is limited: The true effect may be substantially different from the estimate of the effect

**Very low certainty:** We have very little confidence in the effect estimate: The true effect is likely to be substantially different from the estimate of effect

eating more. Sixty-five percent sought social support for stress relief. Just under half (45%) sought or used external information to adjust their thought patterns.

### 3.8. Perceived needs and preferences for interventions aimed at preventing or reducing negative impact on mental health

Utilization of formal and informal strategies can be interpreted as an indicator of healthcare workers' preferences. Seven studies asked healthcare workers directly about whether they needed mental health help, and their preferences regarding such help.

Several studies reported a low level of interest in professional psychological services. Five percent in [Cao et al. \(2020\)](#) explicitly said they would not want professional help. Similarly, [Guo et al. \(2020\)](#) asked their sample "how to deal with psychological distress", and only 14% selected psychological counselling. The majority said distress could be endured or solved individually, and a majority also said talking to friends or family could help. Nineteen percent said online information could help.

[Kang et al. \(2020\)](#) found slightly higher levels of interest in professional resources. When asked from whom they prefer to receive "psychological care" or "resources", 40% answered psychologists or psychiatrists, 14% answered family or relatives, 15% answered friends or colleagues, 2% answered others, and 30% said they did not need help. The authors found that the preferred sources of psychological resources were related to the level of psychological distress. In a structural equation model that uncovered clusters of healthcare workers with different distress levels (subthreshold, mild, moderate, and severe), those with moderate and severe distress more often preferred to receive care from psychologists or psychiatrists, while those with subthreshold and mild distress more often preferred to seek care from family or relatives.

In two studies, participants specified that they had a greater need for personal protective equipment than for psychological help. [Chung and Yeung \(2020\)](#) reported this in a survey that allowed healthcare workers to describe their needs and concerns in free text and to request contact with a psychiatric nurse. While 3% requested such contact, nearly half of those who answered the free text question about their psychiatric needs wrote that they needed personal protective equipment instead, and 20% said they were worried about infection. [Chen et al. \(2020a\)](#) study was to understand why uptake of their psychological intervention was so low, and findings were identical to [Chung et al.](#)'s: "Many staff mentioned that they did not need a psychologist, but needed more rest without interruption and enough protective supplies" (p. e15).

Only one study explored how healthcare workers would be willing to provide mental health services to other healthcare workers: twelve psychiatry residents were re-deployed as frontline workers for one shift in [Behnam et al. \(2020\)](#). After that shift, none were willing to provide face-to-face mental health services to other healthcare workers, although 75% said they would provide online services. They identified healthcare workers of deceased patients as possible target populations for online services.

### 3.9. Experience and understanding of mental health and related interventions

Three qualitative studies assessed as valuable were included. Two interconnected themes across all three studies were distress stemming both from concern for infecting family members, and from being aware of family members' concern for the healthcare workers.

[Wu et al. \(2020a\)](#) explored reasons for stress during interviews with healthcare workers at a psychiatric hospital. While these healthcare workers were not on the frontline, they felt they were at higher risk of exposure than healthcare workers at a general hospital. Their wards were crowded, and several patients were admitted from emergency

rooms with aggressive behaviors that made social distancing difficult or that posed direct challenges to healthcare workers' use of personal protective equipment (such as tearing off workers' masks). Healthcare workers felt unprepared because psychiatric hospitals had no plans in place. At the same time, they also felt that their peers on the frontline were providing more valuable care. An additional source of stress was knowledge of their own risk of infection and transmission to family members, particular to elderly parents in their care, and to children who were at home and whose schoolwork had to additionally be managed. The disruption of the pandemic to healthcare workers' personal lives and career plans was another stressor.

[Sun et al. \(2020\)](#) interviewed twenty frontline nurses about their psychological experiences of frontline work. They reported similar themes as [Wu et al. \(2020a\)](#) sources of stress, particularly the fear of infecting friends and family. Elderly parents and children at home were again mentioned, and concern was great enough that several respondents did not tell their family they were working on the frontline, while others did not live at home during this period. As with [Wu et al. \(2020a\)](#) non-frontline workers, these healthcare workers also reported fear and anxiety of a new infectious disease that they felt unprepared to handle on a hospital-level, unprepared to treat on a patient-level, and from which they were unable to protect themselves. The first week of training and the first week of actual frontline work was characterized by these negative emotions, which were then joined – not necessarily replaced – by more positive emotions such as pride at being a frontline nurse, confidence in the hospital's capacity, and recognition by the hospital.

[Yin and Zeng \(2020\)](#) used a framework of existence, relatedness, and growth theory to analyze nurses' psychological needs. They reported nurses' identification of *existence* needs as primarily health and security: their own physical and mental health, personal protective equipment, and emotional stability for their family. Their need for *relatedness* was represented by needs for relationships and affection, as well as for care, help, and support from colleagues and bosses, as well as from outside the hospital. Finally, *growth* needs referred to needing knowledge of covid-19 infection prevention and control, particularly from the authorities.

[Mohindra et al. \(2020\)](#) cross-sectional survey also reported experiences of mental health promotion narratively, with similar results as [Yin et al.](#): more knowledge of covid-19 could strengthen motivation, as could emotional support. Affecting them negatively were fears of infecting their families, particularly because their families would suffer more financially from needing to be quarantined than they already were suffering under the lockdown; fears of using personal protective equipment incorrectly; and feeling unequipped to handle patients' non-medical needs. Healthcare workers reported that stigma suppressed patients' provision of accurate travel and quarantine history. This was an issue they were ill-equipped to help patients address when they returned to the community. Healthcare workers also reported that they were stigmatized, because they were potential sources of infection.

## 4. Discussion

This systematic review identified 59 heterogeneous studies – including three qualitative, fifty quantitative, two narrative reviews, and four other designs – that examined the mental health of healthcare workers during the covid-19 pandemic. The total of 54,707 participants included mainly frontline nurses and doctors, but also other healthcare workers who provided clinical care, administration, or other clinical tasks. Studies reported a variety of outcomes and situations, including the implementation of interventions to prevent or reduce mental health problems, other resources and strategies utilized by healthcare workers, and on healthcare workers' mental health responses to re-deployment as frontline workers. While the majority of studies were cross-sectional and assessed as having high risk of bias, several patterns in their findings were evident: more healthcare workers were interested in social



support to relieve mental health impacts, and only a minority were interested in professional help for these problems, and yet interventions described in the literature largely seemed to focus on relieving individual symptoms. The current study reveals a mismatch between the likely organizational sources of psychological distress, such as workload and lack of personal protective equipment, and how healthcare systems are attempting to relieve distress at an individual level.

Between one and two of every five healthcare worker reported anxiety, depression, distress, and/or sleep problems. Only one study reported on somatic symptoms such as changes in appetite. Our confidence in these broad estimates, assessed using GRADE, was very low, which leads us to caution that the true prevalence of anxiety, depression, distress, and sleep problems among healthcare workers are likely different than our estimates. At the same time, these findings comport with much of the existing literature on previous viral outbreaks: Meta-analyses of healthcare workers during SARS reported a 46% prevalence of anxiety, 37% depression, 41% distress, and 30% insomnia; during MERS, 32% distress (Salazar de Pablo et al., 2020). Ricci-Cabello et al.'s meta-analysis combined studies of coronaviruses and influenza epidemics and reported similar estimates: 45% anxiety, 38% depression, and 31% distress/stress (Ricci Cabello et al., 2020d). Findings from the two studies following healthcare worker over two timepoints during the pandemic indicate that these complaints increased from the first timepoint to the next. Thus, there is reason to believe that the pandemic and working conditions during the pandemic negatively affects healthcare workers, although more longitudinal studies are needed to confirm this hypothesis.

There are many plausible mechanisms. While our included studies do not allow us to draw any conclusions regarding causality, their findings – particularly perceived needs and preferences – can point us in certain directions. First, high workload and the absence of healthy rotation schedules that accommodate adequate rest, sleep, and restoration over time may have contributed to the mental health problems reported by studies. Sleep problems and insomnia in particular are likely mediators of psychological distress (Krause et al., 2017). Both the qualitative and the cross-sectional studies identified exposure to patients with covid-19 and/or a lack of personal protective equipment and subsequent fear of infecting colleagues, family, friends, and oneself as major contributors to the distress reported by healthcare workers. Even when personal protective equipment was available, not all healthcare workers felt trained enough for proper use, an example of a discrepancy between the demands of a job and the skills possessed (Karasek et al., 1981), which itself is a well-known stressor for healthcare workers in non-pandemic times. The escalation of work-related pressure, rotation of healthcare workers to the frontline, new tasks, and increases in assignments during crises or disasters such as this pandemic are a recipe for occupational stress, unless handled appropriately by hospitals.

Most formal interventions implemented to prevent or relieve mental health problems focused not on organizational factors or on collegial factors, but on individual symptoms. They tended to do so by facilitating the provision of individual mental health services to healthcare workers. The underlying focus of these interventions appeared to be individual psychopathology, without further systematic exploration of the impact of organizational or collegial factors on adverse mental health outcomes. The focus on individual risk and resilience factors and pathology in research may hinder the discovery of underlying organizational faults, which could be more appropriate targets of intervention. This focus on the individual rather than system-level factors is also common in interventions for healthcare worker burn-out before the pandemic (Eaton, 2019). The most striking illustration of this was the finding shared by two studies (Chen et al., 2020a; Chung and Yeung, 2020) that healthcare workers said personal protective equipment would benefit their mental health more than professional help. On the other hand, it is possible that healthcare workers could benefit from professional mental health interventions more than they recognize or report, and that under-recognition is related to occupational culture, or

to fear of stigma or being perceived as weak (Alden et al., 2020). While a variety of countries were represented, four of every five participants were Chinese, and Chinese occupational culture may be a salient mediator of healthcare workers' expressed preferences (Wu et al., 2019), although this must be explored further.

The possible risk and protective/resilience factors reported by our included studies are similar to those identified in other recent reviews of healthcare workers' mental health during other novel viral outbreaks such as SARS, MERS, Ebola, and H1N1. These factors, not related to individual psychopathology, could be areas for healthcare settings to proactively address: junior status, higher exposure, longer quarantine time, having an infected family member, lack of practical support, stigma, and younger age were risk factors of distress in Kiseley et al. (2020) review. De Brier et al. (2020) also reported exposure, quarantine, and health fear as risk factors. Protective factors identified in these two reviews were similar: clear communication, access to adequate personal protective equipment, adequate rest, and both practical and psychological support in Kiseley et al.; clear communication and support from the organization, social support, and a personal sense of control in De Brier et al. Low support and high workload are established risk factors for mental health problems among other occupational groups in times of crises (Alden et al., 2020).

Reported strategies and resources are an important finding of this review: seeking social contact and support was the most common strategy reported by healthcare workers to take care their own mental health, and there was less interest or utilization in professional mental health services. At the same time, there are likely barriers to availing themselves of existing social support during the pandemic. High work burdens combined with healthcare workers' fear of infecting others and high levels of worry may prevent them from accessing or seeking existing social support. Healthcare workers' own psychological reactions to these situations, such as distress or irritation, may lower the empathy and support extended to them from social networks. Accessing and capitalizing on such support could be another appropriate target of an intervention, as in Schulte et al., 2020.

A strength of this review is its depth; it is the most comprehensive review to date of the mental health of healthcare workers under the covid-19 pandemic. Including both quantitative and qualitative designs helped us to contextualize healthcare workers' assessed mental health needs within their self-reported preferences, and the emergent mismatch would not have been possible to observe without this mixed methods approach. Our quality assessment of studies should help other researchers in the evidence synthesis process, if they wish to use methodological quality in their inclusion criteria. We followed the Norwegian Institute of Public Health's rigorous methodological standards for systematic reviews, such as two researchers screening and assessing eligibility. An additional methodological strength is our utilization of the *Live map of covid-19 evidence*, one of the first reviews to do so (see also two reports (Vestheim et al., 2020; Lauvrak and Juvet, 2020) and one diagnostic accuracy study (Deeks et al., 2020)). By using our map, we quickly identified 871 studies that had already been categorized to our topic and population of interest, without having to search in databases and screen again.

While not being able to conduct a meta-analysis is unfortunate, it was appropriate not to assume that poorly reported studies were homogenous enough. The principle of homogeneity tends to be overlooked by systematic reviewers eager to produce a summary estimate, but if met, means that all studies included were similar enough that their participants can be considered participants of one large study (Welton et al., 2012). The result, however, is that the prevalence data about mental health problems does not provide a summary estimate that can be generalized. Other weaknesses are those common to rapid reviews due to time pressure, such as fewer details about the included studies' populations being presented than normally reported.

The covid-19 pandemic has resulted in a flood of studies, many of which have been pushed through the peer-review process and

published at speeds hitherto unseen (see [Glasziou et al., 2020](#) for a discussion). It is therefore not surprising that the majority of our included 59 studies were assessed as having a high risk of bias or being of low methodological quality. Lack of information on samples or procedures was a common limitation, leading to serious implications to the generalizability and validity of findings. We also call on journals and researchers to balance the need for rapid publication with properly conducted studies, reviews and guidelines ([Schunemann et al., 2020](#)).

## 5. Conclusion

Healthcare workers in a variety of fields, positions, and exposure risks are reporting anxiety, depression, distress, and sleep problems during the covid-19 pandemic. Causes vary, but for those on the frontline in particular, a lack of opportunity to adequately rest and sleep is likely related to extremely high burdens of work, and a lack of personal protective equipment or training may exacerbate mental health impacts. Provision of appropriate personal protective equipment and work rotation schedules to enable adequate rest in the face of long-lasting disasters such as the covid-19 pandemic seem paramount. Over time, many more healthcare workers may struggle with mental health and somatic complaints. The six studies exploring mental health interventions mainly focused on individual approaches, most often requiring healthcare workers to initiate contact. Proactive organizational approaches could be less stigmatizing and more effective, and generating evidence on the efficacy of interventions/strategies of either nature is needed. As the design of most studies was poor, reflecting the urgency of the pandemic, there is also a need to incorporate high-quality research in pandemic preparedness planning.

## CRedit authorship contribution statement

**Ashley Elizabeth Muller:** Data curation, Formal analysis, Software, Methodology, Project administration, Writing - original draft, Writing - review & editing. **Elisabet Vivianne Hafstad:** Methodology, Writing - original draft. **Jan Peter William Himmels:** Validation, Visualization, Software, Project administration, Writing - original draft, Writing - review & editing. **Geir Smedslund:** Methodology, Formal analysis, Writing - review & editing. **Signe Flottorp:** Methodology, Writing - review & editing. **Synne Øien Stensland:** Writing - review & editing, Writing - original draft. **Stijn Stroobants:** Writing - original draft, Writing - review & editing. **Stijn Van de Velde:** Methodology, Project administration, Writing - review & editing. **Gunn Elisabeth Vist:** Conceptualization, Methodology, Project administration, Writing - review & editing.

## Declaration of Competing Interest

The authors report no conflicts of interest. The protocol for this review is available online. No funding was received.

## Supplementary materials

Supplementary material associated with this article can be found, in the online version, at doi:[10.1016/j.psychres.2020.113441](https://doi.org/10.1016/j.psychres.2020.113441).

## References

- Armocida, B., Formenti, B., Ussai, S., et al., 2020. The Italian health system and the COVID-19 challenge. *Lancet Public Health* 5 (5). [https://doi.org/10.1016/s2468-2667\(20\)30074-8](https://doi.org/10.1016/s2468-2667(20)30074-8).
- Xie, J., Tong, Z., Guan, X., et al., 2020. Critical care crisis and some recommendations during the COVID-19 epidemic in China. *Intensive Care Med.* 46 (5), 837–840. <https://doi.org/10.1007/s00134-020-05979-7>. [published Online First: 2020/03/02].
- WHO, 2020. COVID 19 Public Health Emergency of International Concern (PHEIC) Global Research and Innovation Forum: Towards a Research Roadmap. R&D Blueprint: <https://www.who.int/publications/m/item/covid-19-public-health-emergency-of-international-concern-pheic-global-research-and-innovation-forum-towards-a-research-roadmap>.
- World Health Organization, pp. 1–7.
- Xiao, J., Fang, M., Chen, Q., et al., 2020a. SARS, MERS and COVID-19 among healthcare workers: a narrative review. *J. Infect. Public Health* 13 (6), 843–848. <https://doi.org/10.1016/j.jiph.2020.05.019>. [published Online First: 2020/05/27].
- Lancee, W.J., Maunder, R.G., Goldbloom, D.S., et al., 2008. Prevalence of psychiatric disorders among Toronto hospital workers one to two years after the SARS outbreak. *Psychiatr. Serv.* 59 (1), 91–95. <https://doi.org/10.1176/ps.2008.59.1.91>.
- Maunder, R.G., Lancee, W.J., Balderson, K.E., et al., 2006. Long-term psychological and occupational effects of providing hospital healthcare during SARS outbreak. *Emerg. Infect. Dis.* 12 (12), 1924–1932. <https://doi.org/10.3201/eid1212.060584>.
- Park, J.S., Lee, E.H., Park, N.R., et al., 2018. Mental health of nurses working at a government-designated hospital during a MERS-CoV outbreak: a cross-sectional study. *Arch. Psychiatr. Nurs.* 32 (1), 2–6. <https://doi.org/10.1016/j.apnu.2017.09.006>. [published Online First: 2018/02/08].
- Huang, J.Z., Han, M.F., Luo, T.D., et al., 2020. [Mental health survey of 230 medical staff in a tertiary infectious disease hospital for COVID-19]. *Chin. J. Ind. Hyg. Occup. Dis.* 38 (0), E001. <https://doi.org/10.3760/cma.j.cn121094-20200219-00063>.
- Tsamakis, K., Rizos, E., A, J.M., et al., 2020. COVID-19 pandemic and its impact on mental health of healthcare professionals. *Exp. Ther. Med.* 19 (6), 3451–3453. <https://doi.org/10.3892/etm.2020.8646>. [published Online First: 2020/04/30].
- Liu, Q., Luo, D., Haase Joan, E., et al., 2020. The experiences of health-care providers during the COVID-19 crisis in China: a qualitative study. *Lancet Glob. Health.* [https://doi.org/10.1016/S2214-109X\(20\)30204-7](https://doi.org/10.1016/S2214-109X(20)30204-7).
- Pappa, S., Ntella, V., Giannakas, T., et al., 2020. Prevalence of depression, anxiety, and insomnia among healthcare workers during the COVID-19 pandemic: a systematic review and meta-analysis. *Brain Behav. Immun.* <https://doi.org/10.1016/j.bbi.2020.05.026>. [published Online First: 2020/05/22].
- Vindegaard, N., Eriksen Benros, M., 2020. COVID-19 pandemic and mental health consequences: systematic review of the current evidence. *Brain Behav. Immun.* <https://doi.org/10.1016/j.bbi.2020.05.048>. [published Online First: 2020/06/03].
- Remuzzi, A., 2020. Remuzzi G. COVID-19 and Italy: what next? *Lancet* 395 (10231), 1225–1228. [https://doi.org/10.1016/s0140-6736\(20\)30627-9](https://doi.org/10.1016/s0140-6736(20)30627-9).
- Godlee, F., 2020. Protect our healthcare workers. *BMJ* 369, 1. <https://doi.org/10.1136/bmj.m1324>. [published Online First: 2 April 2020].
- Muller, A., Vist, G., Flottorp, S., et al., 2020. The Impact of the COVID-19 Pandemic on Mental Health of Health Care Workers: Protocol for a Rapid Systematic Review. Norwegian Institute of Public Health, Oslo, pp. 7.
- Vist, G., Muller, A., Flottorp, S., et al., 2020. A Systematic and Living Evidence Map on COVID-19. Norwegian Institute of Public Health, Oslo, pp. 24.
- Shea, B.J., Reeves, B.C., Wells, G., et al., 2017. AMSTAR 2: a critical appraisal tool for systematic reviews that include randomised or non-randomised studies of healthcare interventions, or both. *BMJ* 358, j4008. <https://doi.org/10.1136/bmj.j4008>. [published Online First: 2017/09/25].
- Critical Appraisal Skills Programme (CASP). CASP checklist for qualitative research 2018 [20 March 2020]. Available from: <https://casp-uk.net/casp-tools-checklists>.
- Johanna Briggs Institute. Critical Appraisal Tools 2018 [Available from: <http://joannabriggs-webdev.org/research/critical-appraisal-tools.html> accessed 20 March 2020].
- Guyatt, G., Oxman, A.D., Akl, E.A., et al., 2011. GRADE guidelines: 1. Introduction- GRADE evidence profiles and summary of findings tables. *J. Clin. Epidemiol.* 64 (4), 383–394. <https://doi.org/10.1016/j.jclinepi.2010.04.026>. [published Online First: 2011/01/05].
- Abdessater, M., Roupêt, M., Misrai, V., et al., 2020a. COVID19 pandemic impacts on anxiety of French urologist in training: outcomes from a national survey. *Progress. Urol.* 23, 23. <https://doi.org/10.1016/j.purol.2020.04.015>.
- Abdessater, M., Roupêt, M., Misrai, V., et al., 2020b. COVID-19 outbreak situation and its psychological impact among surgeon in training in France. *World J. Urol.* <https://doi.org/10.1007/s00345-020-03207-x>.
- Ahmed, M.A., Jouhar, R., Ahmed, N., et al., 2020. Fear and practice modifications among dentists to combat novel Coronavirus Disease (COVID-19) outbreak. *Int. J. Environ. Res. Public Health* 17 (8), 2821. <https://doi.org/10.3390/IJERPH17082821>. Page 2821 2020;17.
- Behnam, S., Mehrdad Eftekhari, A., Mohammadreza, S., et al., 2020. Working in the emergency and inpatient COVID-19 special wards: a different experience for Iranian psychiatric trainees amid the outbreak: running title: experience of Iranian psychiatric trainees in COVID-19 special wards. *Asian J. Psychiatr.*, 102157. <https://doi.org/10.1016/j.ajp.2020.102157>.
- Bohlsen, J., Schomig, F., Seehagen, T., et al., 2020. [Experience of practice-based psychiatrists and neurologists during the COVID-19 pandemic]. *Psychiatr. Prax* 47 (4), 214–217. <https://doi.org/10.1055/a-1159-5575>.
- Cai, H., Tu, B., Ma, J., et al., 2020. Psychological impact and coping strategies of frontline medical staff in Hunan between January and March 2020 during the outbreak of Coronavirus Disease 2019 (COVID19) in Hubei, China. *Med. Sci. Monitor* 26, e924171. <https://doi.org/10.12659/MSM.924171>.
- Cai, W., Lian, B., Song, X., et al., 2019. A cross-sectional study on mental health among health care workers during the outbreak of Corona Virus Disease. *Asian J. Psychiatr.* <https://doi.org/10.1016/j.ajp.2020.102111>. 2020;51 (no pagination)(102111).
- Cao, J., Wei, J., Zhu, H., et al., 2020. A study of basic needs and psychological wellbeing of medical workers in the fever clinic of a tertiary general hospital in Beijing during the COVID-19 outbreak. *Psychother. Psychosom.* 1–3. <https://doi.org/10.1159/000507453>.
- Chen, Q., Liang, M., Li, Y., et al., 2020a. Mental health care for medical staff in China during the COVID-19 outbreak. *Lancet Psychiatry.* [https://doi.org/10.1016/s2215-0366\(20\)30078-x](https://doi.org/10.1016/s2215-0366(20)30078-x).
- Chen, Y., Zhou, H., Zhou, Y., et al., 2020b. Prevalence of self-reported depression and anxiety among pediatric medical staff members during the COVID-19 outbreak in

- Guiyang, China. *Psychiatry Res.* 288, 113005. <https://doi.org/10.1016/j.psychres.2020.113005>.
- Chew, N.W.S., Lee, G.K.H., Tan, B.Y.Q., et al., 2020. A multinational, multicentre study on the psychological outcomes and associated physical symptoms amongst healthcare workers during COVID-19 outbreak. *Brain Behav. Immun.* <https://doi.org/10.1016/j.bbi.2020.04.049>.
- Chung, J.P.Y., Yeung, W.S., 2020. Staff mental health self-assessment during the COVID-19 outbreak. *East Asian Arch. Psychiatry* 30 (1), 34. <https://doi.org/10.12809/eaap2014>.
- Davico, C., Ghiggia, A., Marcotulli, D., et al., 2020. Psychological Impact of the COVID-19 Pandemic on Adults and Their Children in Italy. SSRN.
- Foley, D.A., Kirk, M., Jepp, C., et al., 2020. COVID-19 and paediatric health services: a survey of paediatric physicians in Australia and New Zealand. *J. Paediatr. Child Health* 04, 04. <https://doi.org/10.1111/jpc.14903>.
- Gautam, M., Kaur, M., Mahr, G., 2020. COVID-19 associated psychiatric symptoms in healthcare workers: viewpoint from internal medicine and psychiatry residents. *Psychosomatics*. <https://doi.org/10.1016/j.psym.2020.04.009>.
- Guo, J., Liao, L., Wang, B., et al., 2020. Psychological Effects of COVID-19 on Hospital Staff: a National Cross-Sectional Survey of China Mainland. SSRN <https://doi.org/10.2139/ssrn.3550050>.
- Hong, X., Cao, J., Wei, J., et al., 2020. The Stress and Psychological Impact of the COVID-19 Outbreak on Medical Workers at the Fever Clinic of a Tertiary General Hospital in Beijing: a Cross-Sectional Study. SSRN.
- Hu, L., Li, H., Wang, T., et al., 2020. Assessment of the Mental Health of Front Line Healthcare Workers in a COVID-19 Epidemic Epicenter of China. SSRN.
- Jiang, X., Deng, L., Zhu, Y., et al., 2020. Psychological crisis intervention during the outbreak period of new coronavirus pneumonia from experience in Shanghai. *Psychiatry Res.* 286, 112903. <https://doi.org/10.1016/j.psychres.2020.112903>.
- Kang, L., Ma, S., Chen, M., et al., 2020. Impact on mental health and perceptions of psychological care among medical and nursing staff in Wuhan during the 2019 novel coronavirus disease outbreak: a cross-sectional study. *Brain Behav. Immun.* <https://doi.org/10.1016/j.bbi.2020.03.028>.
- Ko, N.-Y., Lu, W.-H., Chen, Y.-L., et al., 2020. COVID-19-related information sources and psychological well-being: an online survey study in Taiwan. *Brain Behav. Immun.* <https://doi.org/10.1016/j.bbi.2020.05.019>.
- Lai, J., Ma, S., Wang, Y., et al., 2019. Factors associated with mental health outcomes among health care workers exposed to coronavirus disease. *JAMA Netw. Open* 3 (3), e203976. <https://doi.org/10.1001/jamanetworkopen.2020.3976>.
- Li, G., Miao, J., Wang, H., et al., 2020a. Psychological impact on women health workers involved in COVID-19 outbreak in Wuhan: a cross-sectional study. *J. Neurolog. Neurosurg. Psychiatr.* <https://doi.org/10.1136/jnnp-2020-323134>.
- Li, Z., Ge, J., Yang, M., et al., 2020b. Vicarious traumatization in the general public, members, and non-members of medical teams aiding in COVID-19 control. *Brain Behav. Immun.* <https://doi.org/10.1016/j.bbi.2020.03.007>.
- Liang, Y., Chen, M., Zheng, X., et al., 2020. Screening for Chinese medical staff mental health by SDS and SAS during the outbreak of COVID-19. *J. Psychosom. Res.* 133, 110102. <https://doi.org/10.1016/j.jpsychores.2020.110102>.
- Liu, D., Ren, Y., Yan, F., et al., 2020a. Psychological Impact and Predisposing Factors of the Coronavirus Disease 2019 (COVID-19) Pandemic on General Public in China. SSRN <https://doi.org/10.2139/ssrn.3551415>.
- Liu, S., Yang, L., Zhang, C., et al., 2020b. Online mental health services in China during the COVID-19 outbreak. *Lancet Psychiatry*. [https://doi.org/10.1016/s2215-0366\(20\)30077-8](https://doi.org/10.1016/s2215-0366(20)30077-8).
- Liu, X., Shao, L., Zhang, R., et al., 2020c. Perceived Social Support and Its Impact on Psychological Status and Quality of Life of Medical Staffs After Outbreak of SARS-CoV-2 Pneumonia: a Cross-Sectional Study. SSRN <https://doi.org/10.2139/ssrn.3541127>.
- Liu, Z., Han, B., Jiang, R., et al., 2020d. Mental Health Status of Doctors and Nurses During COVID-19 Epidemic in China. SSRN <https://doi.org/10.2139/ssrn.3551329>.
- Louie, P.K., Harada, G.K., McCarthy, M.H., et al., 2020. The Impact of COVID-19 Pandemic on Spine Surgeons Worldwide. *Glob. Spine J.* <https://doi.org/10.1177/2192568220925783>.
- Lu, W., Wang, H., Lin, Y., et al., 2020. Psychological status of medical workforce during the COVID-19 pandemic: a cross-sectional study. *Psychiatry Res.* 112936. <https://doi.org/10.1016/j.psychres.2020.112936>.
- Lv, Y., Zhang, Z., Zeng, W., et al., 2020. Anxiety and Depression Survey of Chinese Medical Staff Before and During COVID-19 Defense. SSRN <https://doi.org/10.2139/ssrn.3551350>.
- Martin, E.B., 2020. Brief Psychotic Disorder Triggered by Fear of Coronavirus? *Psychiatr. Times* 37 (5), 15.
- Mo, Y., Deng, L., Zhang, L., et al., 2020. Work stress among Chinese nurses to support Wuhan for fighting against the COVID-19 epidemic. *J. Nurs. Manag.* <https://doi.org/10.1111/jonm.13014>.
- Mohindra, R., Ravaki, R., Suri, V., et al., 2020. Issues relevant to mental health promotion in frontline health care providers managing quarantined/isolated COVID-19 patients. *Asian J. Psychiatry*, 102084. <https://doi.org/10.1016/j.ajp.2020.102084>.
- Naser, M., 2020. Evaluation of the level of anxiety among Iranian multiple sclerosis fellowships during the outbreak of COVID-19. *Arch. Iran Med.* 23 (4), 283. <https://doi.org/10.34172/aim.2020.13.10.34172/aim.2020.13>.
- Nemati, M., Ebrahimi, B., Nemati, F., 2020. Assessment of Iranian nurses' knowledge and anxiety toward COVID-19 during the current outbreak in Iran. *Arch. Clin. Infect. Dis.* 15 (3), e102848.
- Ni, M.Y., Yang, L., Leung, C.M., et al., 2020. Mental Health, Risk Factors, and Social Media use During the COVID-19 Epidemic and Cordon Sanitaire Among the Community and Health Professionals in Wuhan, China. *JMIR public health and surveillance* <https://doi.org/10.2196/19009>.
- Pu, J., Li, G., Cao, L., et al., 2020. Investigation and analysis of the psychological status of the clinical nurses in a class A hospital facing the novel coronavirus pneumonia. *Chongqing Med.* 49 (0), E015–E015.
- Rajkumar, R.P., 2020. COVID-19 and mental health: a review of the existing literature. *Asian J. Psychiatr.* 102066. <https://doi.org/10.1016/j.ajp.2020.102066>.
- Schulte, E.E., Bernstein, C.A., Cabana, M.D., 2020. Addressing faculty emotional responses during the COVID-19 pandemic. *J. Pediatr.* <https://doi.org/10.1016/j.jpeds.2020.04.057>.
- Shen, X., Zou, X., Zhong, X., et al., 2020a. Psychological stress of ICU nurses in the time of COVID-19. *Crit. Care* 24 (1), 200. <https://doi.org/10.1186/s13054-020-02926-2>.
- Shen, Y., Cui, Y., Li, N., et al., 2020b. Emergency Responses to COVID-19 Outbreak: experiences and Lessons from a General Hospital in Nanjing, China. SSRN <https://doi.org/10.2139/ssrn.3551327>.
- Simpson, S.A., Dumas, A., McDowell, A.K., et al., 2020. Novel Coronavirus and related public health interventions are negatively impacting mental health services. *Psychosomatics*. <https://doi.org/10.1016/j.psym.2020.04.004>.
- Sun, N., Shi, S., Jiao, D., et al., 2020. A qualitative study on the psychological experience of caregivers of COVID-19 patients. *Am. J. Infect. Control*. <https://doi.org/10.1016/j.ajic.2020.03.018>.
- Tan, B.Y.Q., Chew, N.W.S., Lee, G.K.H., et al., 2020. Psychological impact of the COVID-19 pandemic on health care workers in Singapore. *Ann. Intern. Med.* <https://doi.org/10.7326/m20-1083>.
- Wu, D., Jiang, C., He, C., et al., 2020a. Stressors of nurses in psychiatric hospitals during the COVID-19 outbreak. *Psychiatry Res.* 112956. <https://doi.org/10.1016/j.psychres.2020.112956>.
- Wu, W., Zhang, Y., Wang, P., et al., 2020b. Psychological stress of medical staffs during outbreak of COVID-19 and adjustment strategy. *J. Med. Virol.* 21, 21. <https://doi.org/10.1002/jmv.25914>.
- Xiao, H., Zhang, Y., Kong, D., et al., 2020b. The Effects of Social Support on Sleep Quality of Medical Staff Treating Patients with Coronavirus Disease 2019 (COVID-19) in January and February 2020 in China. *Med. Sci. Monitor* 26, e923549. <https://doi.org/10.12659/msm.923549>.
- Xu, J., Xu, Q-h, Wang, C-m, et al., 2020. Psychological status of surgical staff during the COVID-19 outbreak. *Psychiatry Res.* 112955. <https://doi.org/10.1016/j.psychres.2020.112955>.
- Yifan, T., Ying, L., Chunhong, G., et al., 2020. Symptom Cluster of ICU nurses treating COVID-19 pneumonia patients in Wuhan, China. *J. Pain Symptom Manag.* <https://doi.org/10.1016/j.jpainsymman.2020.03.039>.
- Yin, X., Zeng, L., 2020. A study on the psychological needs of nurses caring for patients with coronavirus disease 2019 from the perspective of the existence, relatedness, and growth theory. *Int. J. Nurs. Sci.* <https://doi.org/10.1016/j.ijnss.2020.04.002>.
- Yuan, S., Liao, Z., Huang, H., et al., 2020. Comparison of the indicators of psychological stress in the population of Hubei Province and non-endemic provinces in China during two weeks during the Coronavirus Disease 2019 (COVID-19) outbreak in February 2020. *Med. Sci. Monitor* 26, e923767. <https://doi.org/10.12659/msm.923767>.
- Zhang, C., Yang, L., Liu, S., et al., 2020a. Survey of Insomnia and Related Social Psychological Factors Among Medical Staffs Involved with the 2019 Novel Coronavirus Disease Outbreak. SSRN <https://doi.org/10.2139/ssrn.3542175>.
- Zhang, S.X., Liu, J., Afshar, J., et al., 2020b. At the height of the storm: healthcare staff's health conditions and job satisfaction and their associated predictors during the epidemic peak of COVID-19. *Brain Behav. Immun.* <https://doi.org/10.1016/j.bbi.2020.05.010>.
- Zhang, W.R., Wang, K., Yin, L., et al., 2020c. Mental health and psychosocial problems of medical health workers during the COVID-19 epidemic in China. *Psychother. Psychosom.* 1–9. <https://doi.org/10.1159/000507639>.
- Zhu, J., Sun, L., Zhang, L., et al., 2020a. Prevalence and Influencing Factors of Anxiety and Depression Symptoms in the First-Line Medical Staff Fighting Against the COVID-19 in Gansu. SSRN <https://doi.org/10.2139/ssrn.3550054>.
- Zhu, S., Wu, Y., Zhu, C-y, et al., 2020b. The immediate mental health impacts of the COVID-19 pandemic among people with or without quarantine managements. *Brain Behav. Immun.* <https://doi.org/10.1016/j.bbi.2020.04.045>.
- Salazar de Pablo, G., Vaquerizo-Serrano, J., Catalan, A., et al., 2020. Impact of coronavirus syndromes on physical and mental health of health care workers: systematic review and meta-analysis. *J. Affect. Disord.* 275, 48–57. <https://doi.org/10.1016/j.jad.2020.06.022>. published Online First: 2020/07/14.
- Ricci Cabello I., Meneses Echavez J.F., Serrano-Ripoll M.J., et al. Impact of viral epidemic outbreaks on mental health of healthcare workers: a rapid systematic review. *MedRxiv [Preprint]* 2020 doi:10.1101/2020.04.02.20048892.
- Krause, A.J., Simon, E.B., Mander, B.A., et al., 2017. The sleep-deprived human brain. *Nat. Rev. Neurosci.* 18 (7), 404–418. <https://doi.org/10.1038/nrn.2017.55>. published Online First: 2017/05/19.
- Karasek, R., Baker, D., Marxer, F., et al., 1981. Job decision latitude, job demands, and cardiovascular disease: a prospective study of Swedish Men. *Am. J. Public Health* 71 (7), 12. <https://doi.org/10.2105/ajph.71.7.694>.
- Eaton, L., 2019. Health workforce burn-out. *Bull. World Health Organ.* 97 (9), 585–586. <https://doi.org/10.2471/BLT.19.020919>. published Online First: 2019/09/03.
- Alden, L.E., Matthews, L.R., Wagner, S.L., et al., 2020. Systematic literature review of psychological interventions for first responders. *Work Stress* 1–23.
- Wu, Q., Luo, X., Chen, S., et al., 2019. Stigmatizing attitudes towards mental disorders among non-mental health professionals in six general hospitals in Hunan Province. *Front. Psychiatry* 10, 946. <https://doi.org/10.3389/fpsy.2019.00946>. published Online First: 2020/01/31.
- Kisely, S., Warren, N., McMahon, L., et al., 2020. Occurrence, prevention, and management of the psychological effects of emerging virus outbreaks on healthcare workers: rapid review and meta-analysis. *BMJ*. <https://doi.org/10.1136/bmj.m1642>.

- 369:m1642published Online First: 2020/05/07].
- De Brier, N., Stroobants, S., Vanderckhove, P., et al., 2020. Factors affecting mental health of health care workers during coronavirus disease outbreaks: a rapid systematic review. *PsychRxiv*. <https://doi.org/10.31234/osf.io/w9uxs>. published Online First: 23 April.
- Vestrheim, D., Iversen, B., Flottorp, S., et al., 2020. Should Healthcare Personnel in Nursing Homes Without Respiratory Symptoms Wear Facemasks for Primary Prevention of COVID-19? – a Rapid Review. *Norwegian Institute of Public Health, Oslo*, pp. 42.
- Lauvrak, V., Juvet, L., 2020. Social and Economic Vulnerable Groups During the COVID-19 Pandemic. *Norwegian Institute of Public Health, Oslo*, pp. 35.
- Deeks, J.J., Dinnes, J., Takwoingi, Y., et al., 2020. Antibody tests for identification of current and past infection with SARS-CoV-2. *Cochrane Database Syst. Rev.*(6). <https://doi.org/10.1002/14651858.CD013652>.
- Welton, N.J., Sutton, A.J., Cooper, N., et al., 2012. *Mixed and Indirect Treatment Comparisons. Evidence Synthesis for Decision Making in Healthcare*. Wiley, West Sussex, pp. 169–192.
- Glasziou, P.P., Sanders, S., Hoffmann, T., 2020. Waste in covid-19 research. *BMJ*. <https://doi.org/10.1136/bmj.m1847>. 369:m1847published Online First: 2020/05/14.
- Schunemann, H.J., Santesso, N., Vist, G.E., et al., 2020. Using GRADE in situations of emergencies and urgencies: certainty in evidence and recommendations matters during the COVID-19 pandemic, now more than ever and no matter what. *J. Clin. Epidemiol.* <https://doi.org/10.1016/j.jclinepi.2020.05.030>. [published Online First: 2020/06/09].