

A prioritization regimen of the acupuncture treatment for simple obesity

Protocol for systematic review and network meta-analysis

Rui Zhou, MB^a, Zhijie Wang, MD^a, Wanwei Chen, MB^a, Chushuan Huang, MD^b, Chang Liu, PhD^a, Lixing Zhuang, MD^{a,c,*}, Xiaoyan Xie, MD^a, Haidu Hong, MB^b

Abstract

Background: Patients with simple obesity suffer from poor quality of life, as well as high risk of hypertension, diabetes, cardiovascular, and cerebrovascular accidents. Lots of Clinical trials suggested that acupuncture is beneficial for simple obesity, and it aims to gather solid evidence in order to provide reliable reference in establishing guidelines for acupuncture treatment of simple obesity in this study.

Methods: Relevant databases including Cochrane Library, PubMed, Cochrane Central Register of Controlled Trials, Medline University Resource Center, Chinese Biomedical Literature Service System, and China National Knowledge Infrastructure will be retrieved from January 1950 to November 2018. Two authors will screen studies independently according to the inclusion and exclusion criteria and extract the data in a form of sheet. Quality evaluations and bias risk assessments will be performed for the methodology of included studies. Dichotomous data will be analyzed using odds ratio (OR), and continuous data using mean differences. Network meta-analysis will be conducted by using Stata 14.0. The Development and Evaluation approach will be used to rate the certainty of the evidence of estimates derived from meta-analysis. The primary outcome is body mass index (BMI), and the secondary outcomes are triglycerides, total cholesterol, low-density lipoprotein-cholesterol, effective rate, adverse effects, and recurrence rate. Trial registration number is CRD42019117387.

Results: Based on current evidence, this review will rank the efficacy and safety of the various acupuncture regimen in decreasing BMI, triglycerides, total cholesterol of patients with simple obesity, and to summarize a prioritization regimen.

Conclusion: This evidence may be useful for clinicians, patients, and guideline-makers to select the optimum proposal of acupuncture for the simple obesity treatment.

Abbreviations: BM = body weight, BMI = body mass index, CI = confidence interval, IF = inconsistency factor, OR = odds ratio, TCM = traditional Chinese medicine.

Keywords: acupuncture, network meta-analysis, prioritization regimen, simple obesity, systematic review

Ethics approval is not required for this study does not involve human data.

The URL of the online registry: <https://www.crd.york.ac.uk/prospero/>

This study was funded by Regional TCM diagnosis and treatment center-acupuncture and rehabilitation ward, project number: 211020030206; Jin San Zhen Academic Inheritance studio; and Guangdong Renowned TCM Medicine Workshop of Lixing Zhuang.

All authors have no conflicts of interest to disclose.

^a Clinical College of Acupuncture, Moxibustion and rehabilitation, Guangzhou University of Chinese Medicine, ^b The First Clinical College, Guangzhou University of Chinese Medicine, ^c The First Affiliated Hospital of Guangzhou University of Chinese Medicine, Guangdong, Guangzhou, China.

* Correspondence: Lixing Zhuang, The First Affiliated Hospital of Guangzhou University of Chinese Medicine, No. 16 Airport Road, Guangzhou, Guangdong 510405, China (e-mail: zhuanglixing@163.com).

Copyright © 2019 the Author(s). Published by Wolters Kluwer Health, Inc. This is an open access article distributed under the Creative Commons Attribution License 4.0 (CCBY), which permits unrestricted use, distribution, and reproduction in any medium, provided the original work is properly cited.

How to cite this article: Zhou R, Wang Z, Chen W, Huang C, Liu C, Zhuang L, Xie X, Hong H. A prioritization regimen of the acupuncture treatment for simple obesity. *Medicine* 2019;98:43(e17353).

Received: 3 September 2019 / Accepted: 3 September 2019

<http://dx.doi.org/10.1097/MD.0000000000017353>

1. Introduction

Simple obesity, the most common type of obesity, is characterized by the absence of metabolic disorder and is described as a chronic disease.^[1,2] The etiology of simple obesity is highly complex, which involves the interaction of biological, psychological, societal, and environmental factors.^[3] Today, obesity has been the 2nd largest public health concern,^[4] and its prevalence has dramatically increased over the past 30 years.^[5] According to surveys,^[6] more than 1.9 billion adults worldwide were overweight in the year of 2016, and among these, over 650 million adults were obese. A raised of weight is significantly correlated with the risk of various diseases, such as hypertension, diabetes, cardiovascular, and cerebrovascular accidents.^[6–8] It is widely acknowledged that obesity kills more people than underweight does.^[9] Weight loss is an effective measure to reduce all kinds of adverse risks, which can be achieved by diet management and exercise, medication, and surgical treatment.^[1] Although diet and exercise have been playing an essential role in the weight management, their precise mode of action remains controversial.^[10] The management of diet and exercise can be a great challenge for some people, which require a firm will and a

proper planning. Various weight loss attempts result in weight regain and poor long-term results.^[3] Pharmacological drugs for obesity, including sibutramine and orlistat (FDA-approved),^[11] could not be widely accepted due to side effects and lacking of long-term safety assurance.^[12–14]

Traditional Chinese medicine (TCM) especially acupuncture has been an effective treatment for simple obesity.^[15] There is increasing scientific evidence suggests that acupuncture is beneficial for simple obesity as well as its complications.^[16–21] In the past decade, the number of randomized clinical trials for acupuncture has escalated gradually, and the treatment regimen of simple obesity has been increasingly diversified. Acupuncture can reduce weight through regulating glucose-inhibited neurons,^[21] inducing UCP1 expression, remodeling white adipose tissues to brown adipose tissue,^[22] and inhibiting appetite.^[23] After the literature searching of meta-analysis in acupuncture and related therapies for managing weight, the results showed positive. A study suggested that ear acupuncture could reduce the body weight, fat mass (BM) and body mass index (BMI).^[24] However, the quality of acupuncture researches is variable and some meta-analyses have been produced, the guideline for acupuncture treatment of simple obesity has not yet been developed. Evidence strength of relative studies is somewhat inadequate in guiding the treatment of simple obesity. Therefore, evidence need to be collected and analyzed for the formulation of a prioritization regimen of acupuncture for simple obesity.

2. Data and methods

This study has been registered with PROSPERO, and registration number was CRD42019117387. It will be reported following the Preferred Reporting Items for Systematic Review.

2.1. Inclusion criteria

2.1.1. Types of studies. There are no limitations on the language of randomized controlled trials, which baseline information were statistically balanced between each group.

2.1.2. Types of participants. The criteria for participants are as follows: patients with obesity (BMI > 30^[25]), no organic diseases, and the ability to complete the trial independently. No restrictions on gender, age, race, education level, or economy.

2.1.3. Types of interventions. Interventions including acupuncture (electro-acupuncture, fire-needle, auricular needle, and warm acupuncture), moxibustion, or acupoint catgut embedding as a monotherapy will be included in this study. The interventions in control group can be exercises (ie, Taichi, Yoga, and dance), pharmaceutical drug, placebo (sham needle or sham acupoint), sham, or waitlist. Comparisons investigated are given in Figure 1.

2.1.4. Types of outcomes. The primary outcome is BMI, which is an evaluation index of obesity degree, and the calculation of BMI is weight (kg) divided by the square of height (m). The secondary outcomes are including BM, body fat percentage, waist, hip, waist hip rate, total cholesterol, triglycerides, low-density

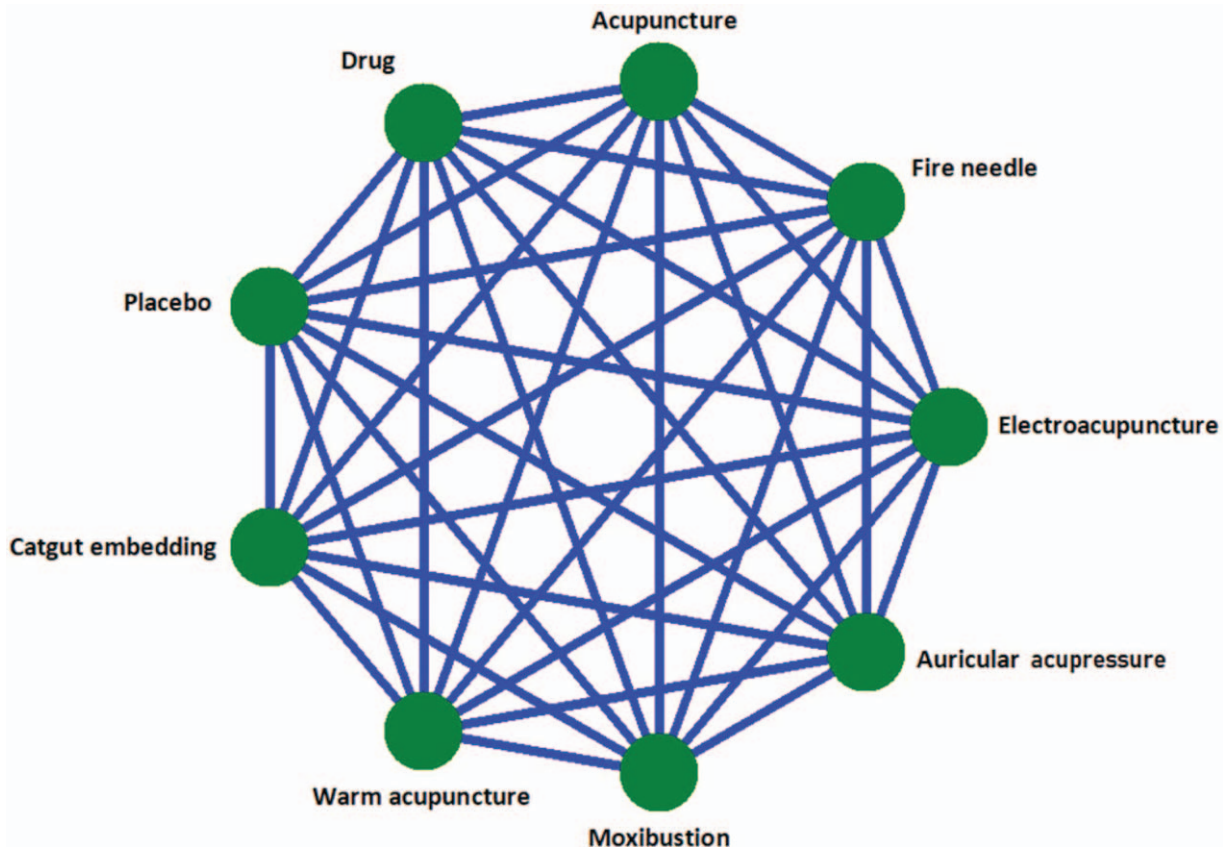


Figure 1. A network for all comparisons.

Table 1
The characteristic information of included studies.

Items	Description
Study	RCTs.
Participant	Baseline equality. Obesity patients (BMI > 30 kg/m ²). No organic diseases. Normal living ability.
Intervention	Interventions including acupuncture (electro-acupuncture, fire-needle, auricular needle, and warm acupuncture), moxibustion, or acupoint catgut embedding as a monotherapy.
Control	Interventions including exercises (ie, Taichi, Yoga, and dance), pharmaceutical drug, placebo (sham needle or sham acupoint), sham or waitlist.
Outcome	Primary outcome is BMI. Secondary outcomes include BM, TC, TG, LDL-C, body fat percentage, fat mass, waist, hip, waist hip rate, body weight reducing rate, adverse effect, and recurrence rate.

BM=body weight, fat mass, BMI=body mass index, LDL-C=low-density lipoprotein-cholesterol, RCT=randomized controlled trial, TC=total cholesterol, TG=triglycerides.

lipoprotein-cholesterol, BM reducing rate, adverse effect, and recurrence rate. Total cholesterol, triglycerides, and low-density lipoprotein-cholesterol will be assessed for various vascular accidents associated with obesity. The characteristic information of included studies is shown in Table 1.

2.2. Studies searching

2.2.1. Computer-based retrieval. We plan to collect all studies comprehensively that meet the inclusion criteria. Subject retrieval will be performed for Medline University Resource Center and China National Knowledge Infrastructure in first step to develop a retrieval strategy. According to retrieval strategy, we will search the following databases from January 1950 to November 2018: PubMed, Embase, Cochrane Central Register of Controlled Trials, Web of Science, Medline University Resource Center, Chinese Biomedical Literature Service System, China National Knowledge Infrastructure, VIP Database, and Wanfang Data. The search strategy is presented in Table 2.

2.2.2. Manual retrieval. We will also search some related journals by manual including “Journal of Traditional Chinese

Medicine,” “Chinese Acupuncture & Moxibustion,” “Shanghai Journal of Acupuncture and Moxibustion,” “Journal of Clinical Acupuncture and Moxibustion,” “New Chinese Medicine,” “Journal of Guangzhou University of Chinese Medicine,” and paper dissertation library in Guangzhou University of Chinese Medicine, Southern Medical University, Jinan University and Guangzhou Medical University.

2.3. Data collection

2.3.1. Selection of studies. Two authors (ZR and WZJ) will review the studies independently according to the inclusion criteria. The consistency of the result will be examined by Kappa value.^[26] If there are divisions in the screening process, the authors will discuss together and seek advice from a third party. Details of the selection process will be presented in the PRISMA flow chart (Fig. 2).^[27]

2.3.2. Data extraction. A data extraction sheet will be conducted for the including study, involving information on details of the first author, year of publication, study design, sample capacity, characteristics of participants, intervention, comparator, outcomes, follow-up, and adverse events.

Table 2
Search strategy.

Number	Search terms (PubMed)	Search terms (Chinese data base)
#1	Simple obesity [MeSH terms]	Dan chun xing fei pang [MeSH terms]
#2	Primary obesity [title]	Yuan fa xing fei pang [title]
#3	Obesity [title]	Fei pang zheng [title]
#4	#1 OR #2 OR #3	#1 OR #2 OR #3
#5	Acupuncture [MeSH terms]	Zhen jiu [MeSH terms]
#6	Needle [title]	Zhen ci [title]
#7	Electroacupuncture [title]	Huo zhen [title]
#8	Moxibustion [title]	Dian zhen [title]
#9	Warming needle moxibustion [title]	Er zhen [title]
#10	Catgut embedding [title]	Ai jiu [title]
#11	#5 OR #6 OR #7 OR #8 OR #9 OR #10	Wen zhen [title]
#12	#4 and #11	Xue wei mai xian [title]
#13	Clinical research [MeSH terms]	#5 OR #6 OR #7 OR #8 OR #9 OR #10 OR #11 OR #12
#14	Randomized [MeSH terms]	#4 and #13
#15	#13 and #14	Lin chuang yan jiu [MeSH terms]
#16	#12 and #15	Sui ji dui zhao shi yan [MeSH terms]
#17	-	#15 and #16
#18	-	#14 and #17

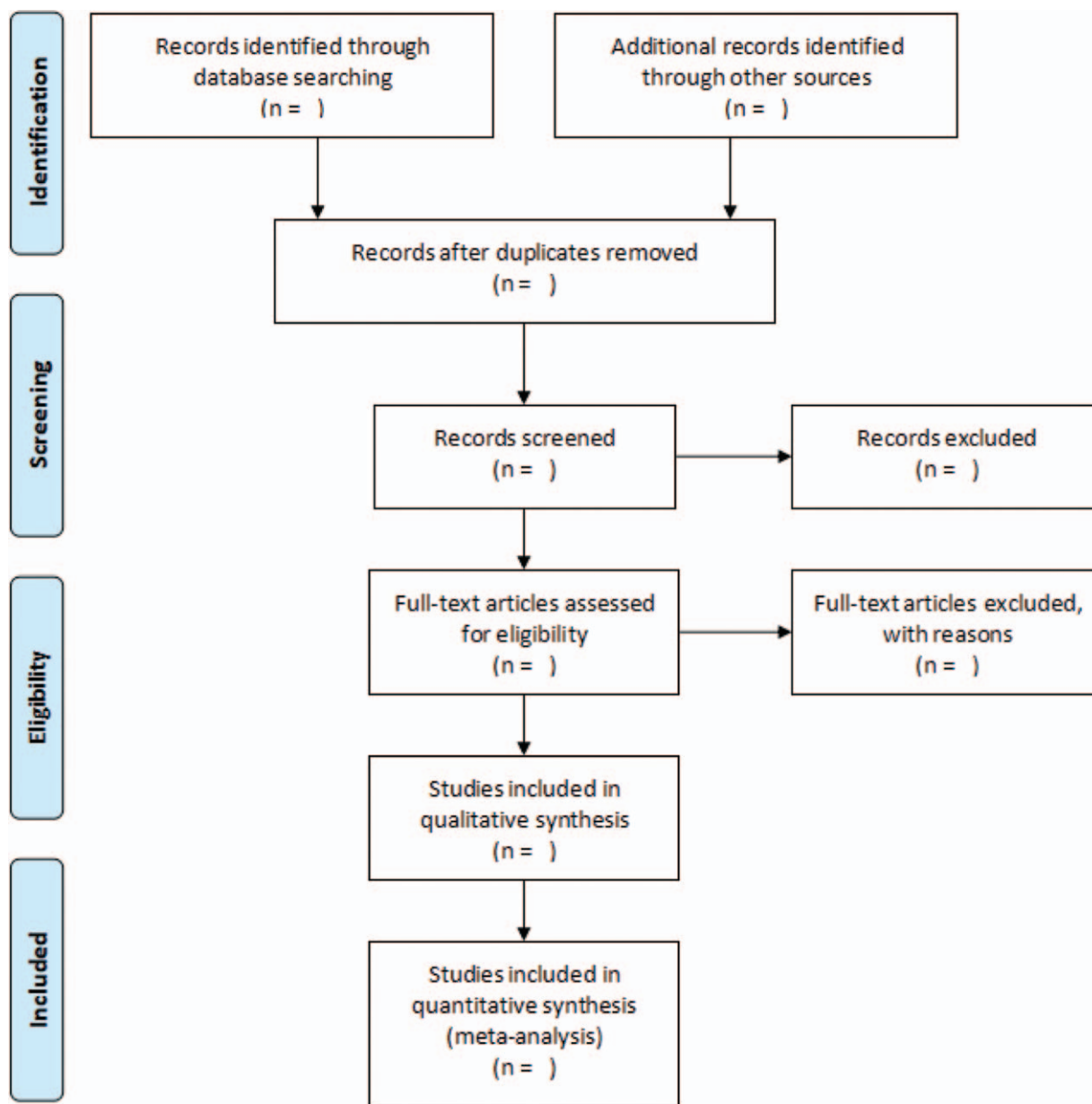


Figure 2. Study flow diagram.

2.3.3. Assessment of quality in included studies. The standards from *Cochrane Handbook.5.1.0*^[28] (The Cochrane Collaboration’s tool for assessing risk of bias) will be adopted to conduct quality evaluation and risk assessment of the included study methodology. The main contents include: Correctness of stochastic; Concealment of allocation; The setup of blind method; Baseline comparison; Result data integrity; Selective report results; Description of lost visit and exit; and Other sources of bias. The result of the evaluation will be input in RevMan 5.3^[29] to generate bias and risk proportional diagram.

2.4. Data analyses

2.4.1. Selection of treatment effect. This review will extract data from the outcomes of each study and combine all effects of

the same interventions. We will summarize the data using odds ratio (OR) with 95% confidence intervals (CIs) for dichotomous data, and using mean difference with 95% CI for continuous outcomes. If the research only provides the mean and standard deviation before and after treatment, we can use the formula, which is offered by *Cochrane Handbook.5.1.0*, to calculate the standard deviation of d-value. (If there is no correlation coefficient available in the study, we will send a mail to the writer asking for related statistics.)

$$(SD_{E \text{ change}} = \sqrt{SD_{E \text{ baseline}}^2 + SD_{E \text{ final}}^2 - (2 \times \text{Corr} \times SD_{E \text{ baseline}} \times SD_{E \text{ final}})},$$

$SD_{E \text{ baseline}}$: Baseline measures; $SD_{E \text{ final}}$: Final measures; Corr: Correlation coefficient.)

Table 3**Data format (A, dichotomous data; B continuous data).**

A				
Study	Treatment	Events	Total	
Author year	Acupuncture	a	n1	
Author year	Moxibustion	c	n2	
B				
Study	Treatment	Mean	Std	Total
Author year	Acupuncture	a	b	n1
Author year	Moxibustion	c	d	n2

2.4.2. Assessment of heterogeneity. We will use χ^2 and I^2 test to estimate heterogeneity of both OR and mean difference. If $I^2 < 50\%$ and $P > .10$, fixed-effect model will be used to interpret the results as low heterogeneity, whereas a random-effect model will be used.

2.4.3. Evidence network diagram. Dichotomous and continuous data will be transformed into the format as shown in Table 3. An evidence network diagram which show distribution of direct and indirect evidence by Stata 14.0.^[30]

2.4.4. Inconsistency examination. We plan to evaluate the consistency assumption for the entire network using the design-by-treatment interaction model.^[31] Triangular (closed loop formed by 3 treatments all compared with one another) loops will be assessed to confirm local inconsistency between direct and indirect evidence. Those closed loops formed by more than 3 treatments will be divided into several triangular loops. Inconsistency factor (IF) will be calculated as the absolute difference (with 95% CIs^[32] and a z-test) between direct and indirect estimates for each paired comparison in the loop. The IF is the logarithm of the ratio of 2 ORs from direct and indirect evidence in the loop; IF close to 0 or ratio of 2 ORs close to 1 indicates that the 2 sources are in agreement.^[31]

2.4.5. Models of consistency and inconsistency. The center group of evidence network will be chosen as the reference group. Based on the hypothesis of no heterogeneity between interventions, we will fit consistency and inconsistency model to assess the differences between 2 models' results, and examine the inconsistency by Wald test.^[32,31] An inconsistency will be used to conduct network-meta analysis if inconsistency is statistically significant, whereas a consistency model will be used. We regard inconsistency as remarkable when $P < .05$ (Wald test).^[31]

2.4.6. Ranking of effects. Based on design-by-treatment interaction, we intend to calculate the surface under the cumulative ranking curve of all interventions and then sort the effects of network-meta analysis according to the cumulative ranking curve value.

2.4.7. Assessment of publication biases. Publication bias may decrease the evidence intensity of systematic evaluation.^[33] Therefore, we plan to use a funnel plot to assess publication among included studies.

2.4.8. Analysis of subgroups. If the necessary data are available, subgroup analyses will be conducted based on baseline weight status of participants (overweight [BMI: 25–29], obese [BMI: 30–39], and morbidly obese [BMI 40+]); within each class, we also plan to do a subgroup analysis by gender (male, female)

or age (<20, 20–30, 30–40, 40–50, and >50). This is a qualitative synthesis and while subgroup analyses may be undertaken, it is not possible to decide the groups in advance.

2.4.9. Strategy for data synthesis. We will undertake statistical analysis by using Stata 14.0 software. If the data cannot be combined in a network meta-analysis, we will provide a narrative synthesis of the findings of included studies, structured around the type of intervention, target population characteristics, and type of outcome. The synthesis of the findings will be presented along with tables and figures to aid in data presentation where appropriate.

2.4.10. Confidence in cumulative evidence. We will evaluate the quality of evidence of the included studies through the Grading of Recommendations Assessment, Development and Evaluation system. The limitations of the study, inconsistencies, indirect evidence, inaccuracies, and publication bias will also be considered. Four levels of quality of evidence will be used: high, moderate, low, or very low.

3. Discussion

Acupuncture as a main technique of TCM has been accepted for managing many kinds of disorders in the whole world, and high interest is showing among doctors and patients.^[34] Studies include clinical and meta-analysis have showed the positive effect in some diseases: Luo et al reported that acupuncture has effect on primary dysmenorrhea in a network meta-analysis^[35]; Raul et al researched that acupuncture on Hegu point could reduce pain level tested by fNIRS^[36]; Wang et al reported that acupuncture is effective and safety for erectile dysfunction^[37]; and Jade and Seung researched that acupuncture has effect on women's sex hormone changes.^[38]

Research on the mechanism of acupuncture in treating simple obesity is still indefinite, while some possible functions of acupuncture have been partly elucidated^[22,39–41]: remodel white adipose tissue, regulate central nervous system and metabolic factor, and improve insulin resistance and leptin resistance. The effects of acupuncture have been proven on animal experiments and in clinical practice. Nowadays, there are a variety of acupoint combinations in treating simple obesity. Based on the complex network analysis, it is found that^[42,43] frequently used meridians include the Stomach Meridian, Conception Vessel, and Bladder Meridian. Frequently used acupoints include Tianshu (ST 25), Zusanli (ST 36), and Sanyinjiao (SP 6), which play a significant role in treating simple obesity. Tianshu and Zusanli are both located on stomach meridian, and Sanyinjiao is on Spleen meridian. Those 3 acupoints always used together for controlling the function of stomach and spleen. In TCM, stomach and spleen have great relationship with dietary metaboloc, and obesity could be occurred when dietary metaboloc is disorder.

However, the guideline for acupuncture treatment of simple obesity has not yet been developed; so acupuncturists may use variable plans depend on their own experience, which may result in different effects. The evidence strength of relative studies is somewhat inadequate. This study will provide a detailed review on the efficacy and safety aspects of various acupuncture therapies for simple obesity. Solid evidence will be obtained to formulate a prioritization regimen for the treatment of simple obesity, which can be useful for clinicians, patients, and guideline-makers to select an optimum proposal of acupuncture in the simple obesity treatment.

4. Conclusions

This evidence may be useful for clinicians, patients, and guideline-makers to select the optimum proposal of acupuncture for the simple obesity treatment.

Author contributions

Conceptualization: Rui Zhou, Zhijie Wang, Lixing Zhuang.

Data curation: Chushuan Huang, Chang Liu, Lixing Zhuang.

Formal analysis: Wanwei Chen, Xiaoyan Xie.

Funding acquisition: Zhijie Wang, Lixing Zhuang.

Investigation: Haidu Hong.

Methodology: Rui Zhou, Zhijie Wang.

Project administration: Chushuan Huang.

Resources: Wanwei Chen, Xiaoyan Xie.

Software: Rui Zhou.

Supervision: Chang Liu, Lixing Zhuang.

Validation: Lixing Zhuang.

Visualization: Haidu Hong.

Writing – original draft: Rui Zhou, Zhijie Wang, Wanwei Wang.

Writing – review & editing: Zhijie Wang, Lixing Zhuang.

References

- Wang JY. *Medicine*. Beijing: People's Health Publishing House; 2010.
- Mao Y. Research progress on clinical efficacy and mechanism of acupuncture in the treatment of simple obesity. *China Continuing Medical Educ* 2017;9:170–1.
- Ells L, Atkinson G, McGowan V, et al. Intermittent fasting interventions for the treatment of overweight and obesity in adults aged 18 years and over: a systematic review protocol. *JBIM Database Syst Rev Implement Rep* 2015;13:60–8.
- Capehorn MS, Haslam DW, Welbourn R. Obesity treatment in the UK health system. *Curr Obes Rep* 2016;5:320–6.
- Ogden CL, Carroll MD, Kit BK, et al. Prevalence of obesity and trends in body mass index among US children and adolescents, 1999–2010. *JAMA* 2012;307:483–90.
- World Health Organization. Overweight and obesity factsheet. 2018. [Internet]. Available from: <http://www.who.int/mediacentre/factsheets/fs311/en/>. (Accessed 5 Nov, 2018)
- Yang L, Colditz GA. Prevalence of overweight and obesity in the United States, 2007–2012. *JAMA Intern Med* 2015;175:1412–3.
- Qian WW, Xin B, Sun N, et al. The epidemiology and related complications of obesity. *Sci Technol Vis* 2016;18:53–4.
- Fabrizio F, Michele M. Simple vs. complex carbohydrate dietary patterns and the global overweight and obesity pandemic. *Int J Environ Res Public Health* 2017;14:1174.
- Dalle GR, Calugi S, Ghoch M. Lifestyle modification in the management of obesity: achievements and challenges. *Eat Weight Disord* 2013;18:339–49.
- Xu S, Xue Y. Pediatric obesity: causes, symptoms, prevention and treatment. *Exp Ther Med* 2016;11:15–20.
- Leblanc ES, O'Connor E, Whitlock EP, et al. Effectiveness of primary care-relevant treatments for obesity in adults: a systematic evidence review for the U.S. Preventive Services Task Force. *Ann Intern Med* 2011;155:434–47.
- Guh DP, Zhang W, Bansback N, et al. The incidence of co-morbidities related to obesity and overweight: a systematic review and meta-analysis. *BMC Public Health* 2009;9:88.
- LeBlanc E, O'Connor E, Whitlock EP, et al. *Screening and Management of Obesity and Overweight in Adults*. Rockville, MD: Agency for Healthcare Research and Quality; 2011.
- Deng L, Ai YZ, Li MD. Summary of research on treatment of obesity with traditional Chinese medicine. *J Basic Chin Med* 2017;23:1652–3.
- Su N, Zhang XI, Li T. Research progress on the treatment of simple obesity with acupuncture. *J Changchun Univ Chin Med* 2018;34:189–91.
- Li WQ, Jiang W, Liu J. Treatment of simple obesity patients with phlegm dampness stagnation syndrome with warming needle moxibustion. *Zhen Ci Yan Jiu* 2018;43:522–5.
- Zheng X, Ji HC, Nie LJ. Therapeutic observation of acupoint embedding with PGLA thread for simple obesity. *Shanghai J Acu-Mox* 2018;37:391–4.
- Zhang K, Zhou S, Wang C, et al. Acupuncture on obesity: clinical evidence and possible neuroendocrine mechanisms. *Evid Based Complement Alternat Med* 2018;9569685.
- Zhang RQ, Tan J, Li FY, et al. Acupuncture for the treatment of obesity in adults: a systematic review and meta-analysis. *Postgrad Med J* 2017;93:743–51.
- Chen IJ, Yeh YH, Hsu CH. Therapeutic effect of acupoint catgut embedding in abdominally obese women: a randomized, double-blind, placebo-controlled study. *J Womens Health (Larchmt)* 2018;27:782–90.
- Shen W, Wang Y, Lu SF, et al. Acupuncture promotes white adipose tissue browning by inducing UCP1 expression on DIO mice. *BMC Complement Altern Med* 2014;14:501.
- Chen JA, Chen JA, Lee S. Potential role for acupuncture in the treatment of food addiction and obesity. *Acupunct Med* 2018;36:52–5.
- World Health Organization. Overweight and obesity factsheet. 2018. [Internet]. Available from: <http://www.who.int/mediacentre/factsheets/fs311/en/>. (Accessed 13 May, 2019)
- Yeh TL, Chen HH, Pai TP, et al. The effect of auricular acupoint stimulation in overweight and obese adults: a systematic review and meta-analysis of randomized controlled trials. *Evid Based Complement Alternat Med* 2017;2017:3080547.
- Zhang TS, Zhong WZ, Li B. *Applied Methodology for Evidence-Based Medicine*. Hunan Province: Central South University Press; 2017. 87–88.
- Moher D, Liberati A, Tetzlaff J, et al. PRISMA Group PRISMA Group Preferred reporting items for systematic reviews and meta-analyses: the PRISMA statement. *Ann Intern Med* 2009;151:264.
- Higgins AD. Assessing risk of bias in included studies. In: Higgins JPT, Green S (eds). *Cochrane Handbook for Systematic Reviews of Interventions*. Version 5.1.0. 2011, Chap 8.
- Review Manager [Computer program]. Version 3.5. England: Cochrane Central Executive team, 2014.
- StataMP-64 (Stata) [Computer program]. Version 14.0. American: StataCorp LLC, 2015.
- White IR, Barrett JK, Jackson D, et al. Consistency and inconsistency in network meta-analysis: model estimation using multivariate meta-regression. *Res Synth Methods* 2012;3:111–25.
- Higgins JP, Jackson D, Barrett JL, et al. Consistency and inconsistency in network meta-analysis: concepts and models for multi-arm studies. *Res Synth Methods* 2012;3:98–110.
- Zhang TS, Zhong WZ, Li B. *Applied Methodology for Evidence-Based Medicine*. Hunan Province: Central South University Press; 2017. 257–258.
- Erik KK. Fully integrating medical acupuncture into family medicine. *Ann Fam Med* 2018;16:367.
- Luo FL, Huang XY, Liu XH, et al. Comparative efficacy and safety of NSAIDs-controlled acupuncture in the treatment of patients with primary dysmenorrhoea: a Bayesian network meta-analysis. *J Int Med Res* 2019;47:19–30.
- Raul FR, Mingyu L, Julio W. R, et al. Cortical network response to acupuncture and the effect of the Hegu point: an fNIRS study. *Sensors (Basel)* 2019;19:394.
- Wang J, Zhou Y, Dai H, et al. The safety and efficacy of acupuncture for erectile dysfunction: a network meta-analysis. *Medicine (Baltimore)* 2019;98:e14089.
- Jade HK, Seung NK. A literature review of women's sex hormone changes by acupuncture treatment: analysis of human and animal studies. *Evid Based Complement Alternat Med* 2018;3752723.
- Jing XY, Ou C, Lu SF, et al. Acupuncture intervention reduced weight gain induced by hypoglycemic agents through food intake-related targets in central nervous system. *Zhen Ci Yan Jiu* 2015;40:510–3.
- Martinez B, Peplow PV. Treatment of insulin resistance by acupuncture: a review of human and animal studies. *Acupunct Med* 2016;34:310–9.
- Gong M, Wang X, Mao Z, et al. Effect of electroacupuncture on leptin resistance in rats with diet-induced obesity. *Am J Chin Med* 2012;40:511–20.
- Chen X, Huang W, Hu F, et al. Regularity of acupoint selection for simple obesity treated by acupoint catgut embedding based on complex network technology. *Zhen Ci Yan Jiu* 2018;43:585–90.
- Xian QQ, Gan PP, Liang FX, et al. Study on the selection rules of specific acupoints with acupuncture for treating simple obesity based on literature analysis. *J Jiangxi Univ TCM* 2018;30:48–51.