



# Massively Parallel Sequencing of Patients with Intellectual Disability, Congenital Anomalies and/or Autism Spectrum Disorders with a Targeted Gene Panel

Maggie Brett<sup>1</sup>, John McPherson<sup>2</sup>, Zhi Jiang Zang<sup>3</sup>, Angeline Lai<sup>4</sup>, Ee-Shien Tan<sup>4</sup>, Ivy Ng<sup>4</sup>, Lai-Choo Ong<sup>5</sup>, Breana Cham<sup>4</sup>, Patrick Tan<sup>2,3</sup>, Steve Rozen<sup>2</sup>, Ene-Choo Tan<sup>1\*</sup>

**1** KK Research Centre, KK Women's & Children's Hospital, Singapore, Singapore, **2** Duke-NUS Graduate Medical School, Singapore, Singapore, **3** National Cancer Centre, Singapore, Singapore, **4** Genetic Services, KK Women's & Children's Hospital, Singapore, Singapore, **5** Universiti Malaya Medical Centre, Petaling Jaya, Malaysia

## Abstract

Developmental delay and/or intellectual disability (DD/ID) affects 1–3% of all children. At least half of these are thought to have a genetic etiology. Recent studies have shown that massively parallel sequencing (MPS) using a targeted gene panel is particularly suited for diagnostic testing for genetically heterogeneous conditions. We report on our experiences with using massively parallel sequencing of a targeted gene panel of 355 genes for investigating the genetic etiology of eight patients with a wide range of phenotypes including DD/ID, congenital anomalies and/or autism spectrum disorder. Targeted sequence enrichment was performed using the Agilent SureSelect Target Enrichment Kit and sequenced on the Illumina HiSeq2000 using paired-end reads. For all eight patients, 81–84% of the targeted regions achieved read depths of at least 20×, with average read depths overlapping targets ranging from 322× to 798×. Causative variants were successfully identified in two of the eight patients: a nonsense mutation in the *ATRX* gene and a canonical splice site mutation in the *L1CAM* gene. In a third patient, a canonical splice site variant in the *USP9X* gene could likely explain all or some of her clinical phenotypes. These results confirm the value of targeted MPS for investigating DD/ID in children for diagnostic purposes. However, targeted gene MPS was less likely to provide a genetic diagnosis for children whose phenotype includes autism.

**Citation:** Brett M, McPherson J, Zang ZJ, Lai A, Tan E-S, et al. (2014) Massively Parallel Sequencing of Patients with Intellectual Disability, Congenital Anomalies and/or Autism Spectrum Disorders with a Targeted Gene Panel. PLoS ONE 9(4): e93409. doi:10.1371/journal.pone.0093409

**Editor:** Hao Sun, The Chinese University of Hong Kong, Hong Kong

**Received:** September 26, 2013; **Accepted:** March 4, 2014; **Published:** April 1, 2014

**Copyright:** © 2014 Brett et al. This is an open-access article distributed under the terms of the Creative Commons Attribution License, which permits unrestricted use, distribution, and reproduction in any medium, provided the original author and source are credited.

**Funding:** This study is funded by Grant number BMRC 06/1/50/19/485 from the Agency for Science and Technology and Research; and NMRC/PPG/KKH12010-Theme3 from the National Medical Research Council, Ministry of Health, Republic of Singapore. The funders had no role in study design, data collection and analysis, decision to publish, or preparation of the manuscript.

**Competing Interests:** The authors have declared that no competing interests exist.

\* E-mail: tanec@bigfoot.com

## Introduction

Developmental delay and/or intellectual disability (DD/ID) affects 1–3% of all children and at least half of these are thought to have a genetic etiology. The genetic causes include microscopically visible chromosomal imbalances, copy number variants as well as point mutations. However, the genetic etiology remains unknown for at least 50% of all cases of DD/ID [1]. Diagnosis of DD/ID is challenging due to the broad spectrum of phenotypic presentations, as patients with DD/ID often have congenital anomalies and/or autism spectrum disorders. With the advent of massively parallel sequencing (MPS) or next generation sequencing (NGS), there has been expectation of an increased detection of the genetic causes of DD/ID. In particular, exome sequencing has been identified as an effective tool for discovery of new disease genes. However, many technical challenges remain including the uneven depth of coverage across the exome, gaps in coverage and mapping problems. In addition, there is the challenge of interpreting the clinical significance of the thousands of variants generated by exome sequencing.

An alternative approach is to perform MPS with a targeted gene panel. Studies using panels of targeted genes have been reported for various disease entities like cardiomyopathies [2], hearing loss

[3], epilepsy [4] and retinal disorders [5]. These studies have shown that targeted MPS is particularly suited for clinical diagnostic testing for genetically heterogeneous conditions where there are a large number of known candidate genes.

We describe our experiences with using massively parallel sequencing of a targeted gene panel of 355 genes for investigating the genetic etiology of eight patients with a range of phenotypes including DD/ID, congenital anomalies and autism spectrum disorder.

## Materials and Methods

### Ethics Statement

This study is approved by the Institutional Review Board of KK Women's and Children's Hospital and SingHealth Centralised Institutional Review Board A. The patients were recruited with written informed parental consent by the Genetics Service, KK Women's & Children's Hospital, Singapore.

### Patient phenotypes

Eight patients with phenotypes ranging from developmental delay, multiple congenital anomalies and/or autism spectrum disorders were selected for the targeted sequencing (Table 1). Prior

**Table 1.** Phenotypes and genetic testing of the eight patients.

| Patient   | Age | Gender | Phenotypes  | Previous genetic testing   |
|-----------|-----|--------|---|--|
| Patient 1 | 11  | Male   | DD/ID, hydrocephalus, adducted thumbs, agenesis of corpus callosum, spasticity, optic atrophy, CTEV, no speech  | Karyotype, aCGH  |
| Patient 2 | 4   | Male   | DD, microcephaly, dysmorphism (hypertelorism, low set ears, posteriorly rotated, microstomia with tented upper lip, high forehead with cowlick), hypotonia, short fingers, bilateral CTEV, bifid scrotum, undescended testes, speech delay, family history of neurodevelopmental disorders and early deaths | aCGH   |
| Patient 3 | 4   | Female | Dandy-Walker malformation, bilateral post-axial polydactyly, ventricular septal defect; anal stenosis, hearing loss, omphalocele minor, hypoplastic nipple, sacral dimple, low set ears, deep set eyes, significant tendency to keloid formation  | Karyotype, fluorescent in-situ hybridization for 6p deletion, aCGH |
| Patient 4 | 11  | Female | DD, autism spectrum disorder diagnosed at age 3½.   | Karyotype, Angelman Syndrome, aCGH                                 |
| Patient 5 | 5   | Male   | DD, no speech, no eye contact   | Karyotype, FragX, aCGH   |
| Patient 6 | 5   | Male   | Speech delay, autism spectrum disorder, sister with DD and Turner's syndrome  | Karyotype, FragX, aCGH   |
| Patient 7 | 11  | Male   | Normal IQ, mild autism, does not interact with peers, hyperactive   | Karyotype, aCGH  |
| Patient 8 | 7   | Female | DD, intellectual disability? autism spectrum disorder, speech delay, moderate IQ, hypertelorism, depressed nasal bridge, prominent jaw, brother with ADHD   | Karyotype, FragX, aCGH,  |

DD = developmental delay; ID = intellectual disability; CTEV = congenital talipes equinovarus; ADHD = attention deficit hyperactivity disorder; aCGH = array comparative genomic hybridization; FragX = Fragile X  
doi:10.1371/journal.pone.0093409.t001

genetic tests were normal and array comparative genomic hybridization did not detect any copy number changes associated with known microdeletion and microduplication syndromes.

#### DNA extraction

Genomic DNA was isolated from peripheral blood using the Genra Puregene blood kit (Qiagen Inc., USA) according to the manufacturer's instructions.

#### Targeted gene panel and MPS

A total of 355 genes were targeted for capture and deep sequencing. They include candidate genes associated with DD/ID, microdeletion/microduplication syndromes, congenital anomalies, and autism spectrum disorders (Table S1). Using the eArray system (Agilent Technologies Inc. USA), the capture was designed to include exons with at least 30 bp of the flanking intronic sequence. In addition, 5 kb of the flanking sequence in the 5'UTR and 3'UTR regions were added to the targeted regions. A total of 4150 regions from the 355 genes were targeted for a final capture size of 4.79 Mb.

Targeted sequence enrichment was performed using the Agilent SureSelect Target Enrichment Kit (Agilent Technologies Inc. USA). Genomic DNA was sheared using a Covaris S1 Ultrasonicator (Covaris, MA). Adaptor-ligated libraries were constructed using Paired-End Genomic DNA kits (Illumina, CA). The multiplexed samples were sequenced on the Illumina HiSeq platform using 76-bp paired-end reads.

#### Variant analysis and prioritization

Sequencing data were aligned to hg19 using the Burrows-Wheeler Aligner (BWA) software. PCR duplicates were removed with the 'samtools' software, and variants called using the Genome Analysis Toolkit (GATK, version 1.0) software from the Broad Institute.

Variants were annotated based on CCDS, Refseq and Ensembl gene transcripts. Identified variants that are listed in the NCBI dbSNP (version 132) were filtered out, along with variants that had poor depth or low average base quality scores. Prioritization of

variants was carried out by the following criteria: selection of candidate genes based on patient's phenotype, severity of the predicted impact on gene function, conservation of amino acid affected, and frequency of the variant in the literature and databases including the Human Gene Mutation Database (HGMD <http://www.biobase-international.com/>), Leiden Open Variation Databases (LOVD <http://www.lovd.nl/3.0/home>), Exome Variant Server (EVS, <http://evs.gs.washington.edu/EVS/>) and 1000 genomes database (<http://browser.1000genomes.org/index.html>). PolyPhen-2 (<http://genetics.bwh.harvard.edu/pph2/>) and SIFT (<http://sift.bii.a-star.edu.sg/>) were used to predict the pathogenicity of non-synonymous variants. The candidate variants were confirmed by Sanger sequencing and familial segregation testing was performed whenever possible. The workflow is summarized in Figure 1.

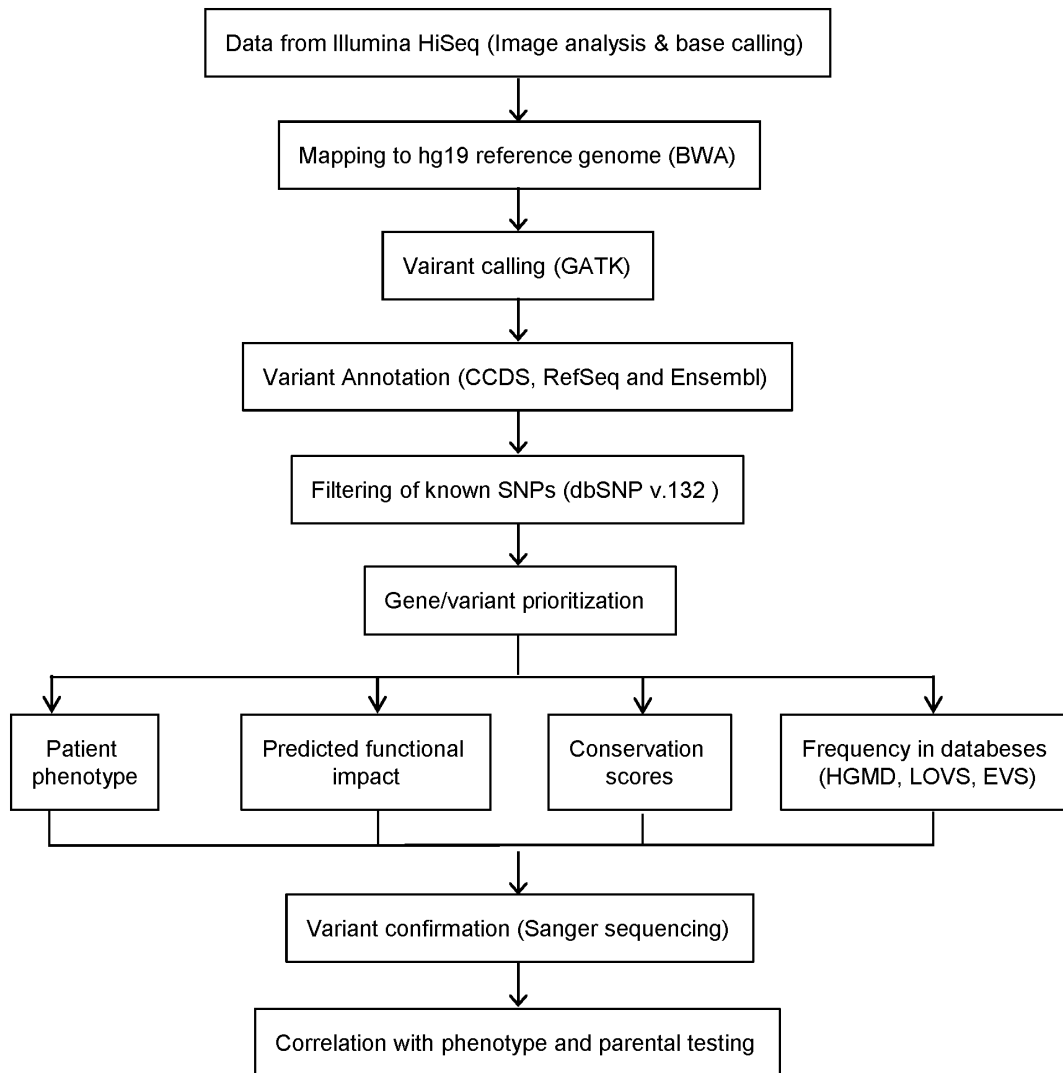
Genotype data has been deposited at the European Genome-phenome Archive (EGA, <http://www.ebi.ac.uk/ega/>), which is hosted by the EBI, under accession number EGAS00001000683.

#### Sanger Dideoxy Terminator Sequencing

Selected variants were confirmed by Sanger dideoxy terminator sequencing. Primers were designed with Primer3 software. PCR was carried out with HotStarTaq PCR kit (Qiagen Inc., USA) and GC-Rich PCR kit (Roche Diagnostics GmbH, Mannheim, Germany) was used for GC rich regions. Sequencing products were resolved on an ABI3730 capillary sequencing instrument (Applied Biosystems) and chromatograms were analysed with Mutation Surveyor version 3.3 (SoftGenetics, LLC, State College, PA, USA).

#### RNA extraction and cDNA sequencing

RNA was extracted from freshly collected whole blood using the NucleoSpin RNA blood kit (Machery-Nagel GmbH, Germany) and cDNA was synthesized using the Qiagen OneStep RT-PCR kit (Qiagen Inc., USA). PCR primers were designed within exons and PCR was performed using cDNA as template. PCR products were visualised on gels and sequenced as described above.



**Figure 1. Variant analysis and prioritization workflow.** Summary of our variant evaluation process for identifying candidate mutations  
doi:10.1371/journal.pone.0093409.g001

## Results

### Data output and quality

For all eight patients, 81–84% of the targeted regions achieved read depths of at least 20×, with average read depths overlapping targets ranging from 322× to 798× (Table 2). There were a few genes with very poor coverage. In particular, coverage of *IKBK*, *CFC1* and *GTF21* was generally poor. In addition, read depths were <10× for a few exons in genes like *ARX*, *SHANK3*, *MECP2*, *SALL1*, *TBX1*, *PGA5*, *NF1*, *CHRNA7*, *NIPAI*, *DMD*. These were usually either in exon 1 or within GC rich regions.

### Variant detection and prioritization

After filtering out the common variants present in dbSNP and variants with MAF >1% in EVS and the 1000 Genome browser, 1505 single nucleotide variants (SNVs) were identified in the eight patients, with a range of 131 to 236 SNVs per patient. A small number of variants were selected for validation by Sanger sequencing based on the prioritization criteria shown in Figure 1.

### Patient 1

A total of 172 SNVs were detected in Patient 1 who is male with a 46,XY karyotype. Of the SNVs affecting exons, the top candidate mutation was a putative splice site mutation in the *LICAM* gene, c.3458-1G>A, located at chrX: 153129005 (hg19) which was sequenced at 88× (Figure 2A). This variant was confirmed by Sanger sequencing (Figure 2B) and parental testing confirmed that the hemizygous mutation was inherited from his healthy mother. The variant affects the invariant AG acceptor splice site of intron 25 and is predicted to affect the splicing of exon 26. cDNA sequencing confirmed that splicing is affected at exon 26 and that the variant results in a deletion of 5 bp (r.3458\_3462delTGAAG) from exon 26, which causes a frame shift and a premature stop leading to a predicted truncated protein of 1153 amino acids (Figure 2C).

### Patient 2

Patient 2 is male with a 46,XY karyotype. Among the 129 SNVs detected in this patient, the top candidate was a c.7156C>T

**Table 2.** Summary of MPS data for the eight patients.

| Sample    | Read Pairs (M) | % Aligned to Reference | Reads overlapping target |                            |        | Total SNV | Variants in dbsNP | Novel variants |
|-----------|----------------|------------------------|--------------------------|----------------------------|--------|-----------|-------------------|----------------|
|           |                |                        | Ave Target Depth         | Target $\geq 20\times$ (%) | %      |           |                   |                |
| Patient 1 | 32,30          | 82.6                   | 487                      | 82                         | 15,482 | 14,368    | 172               |                |
| Patient 2 | 20,53          | 87.6                   | 322                      | 81                         | 9,699  | 9,183     | 129               |                |
| Patient 3 | 51,92          | 80.5                   | 798                      | 83                         | 23,885 | 21,794    | 236               |                |
| Patient 4 | 48,25          | 81.7                   | 719                      | 84                         | 23,716 | 21,946    | 228               |                |
| Patient 5 | 18,93          | 88.1                   | 304                      | 81                         | 9,204  | 8,603     | 158               |                |
| Patient 6 | 30,44          | 86.0                   | 478                      | 83                         | 13,726 | 12,803    | 179               |                |
| Patient 7 | 48,76          | 81.0                   | 707                      | 83                         | 26,268 | 23,517    | 272               |                |
| Patient 8 | 24,33          | 86.1                   | 392                      | 82                         | 10,598 | 9,955     | 131               |                |

doi:10.1371/journal.pone.0093409.t002

(p.R2386X) mutation in the *ATRX* gene, located at chr X: 76776310 (Figure 3A). The mutation was validated by Sanger sequencing (Figure 3B), and extended family testing showed that the mutation was present in the unaffected mother and in an affected brother (Figure 3C), but was absent in the father and unaffected sister.

### Patient 3

A total of 236 SNVs were detected in Patient 3, who is female with a 46,XX karyotype. The top candidate SNVs included potential splice site SNVs in *USP9X* and *FGFR2*, and non-synonymous variants in *RELN*, *DMD*, *MAP7D2* and *ZNF41*. Indels in exonic regions of *SHROOM4*, *ZIC2* and *MED12* were also investigated. All the SNVs and indels were confirmed by Sanger sequencing and parental testing showed that all the variants were inherited except for the *USP9X* splice site variant. The *de novo* c.1986-1G>T variant in *USP9X* (chrX: 41025124) is the likely causative mutation (Figure 4A & 4B). This variant is novel and is predicted to affect the acceptor splice site of intron 15 of the *USP9X* gene. cDNA sequencing with primers in exon 13 and exon 17 showed the normal transcript together with the low-level presence of an altered transcript. The altered transcript showed a deletion of 13 bases (r.1986\_1998delATTTTATTGAAG) which is predicted to result in an altered protein and a premature stop codon p.F663Mfs\*18 (Figure 4C & 4E). A second, independent pair of primers in exons 13 and 16 also showed the presence of this low-level altered transcript. Sequencing of the RT-PCR product from a control RNA only showed the presence of the normal transcript with no altered transcript seen (Figure 4D).

### Patients 4–8

The top candidate variants of patients 4–8 are listed in Table 3. All these variants have been confirmed by Sanger sequencing and their inheritance was tested if parental samples were available. In addition to the variants detected by MPS, previous array CGH using Affymetrix SNP6 for Patient 5 showed a 134 kb deletion at 9p21.1 extending from 28,609,725–28,743,782 (hg19) involving the *LINGO2* gene (data not shown). This copy number change was initially thought to have no clinical significance.

### Discussion

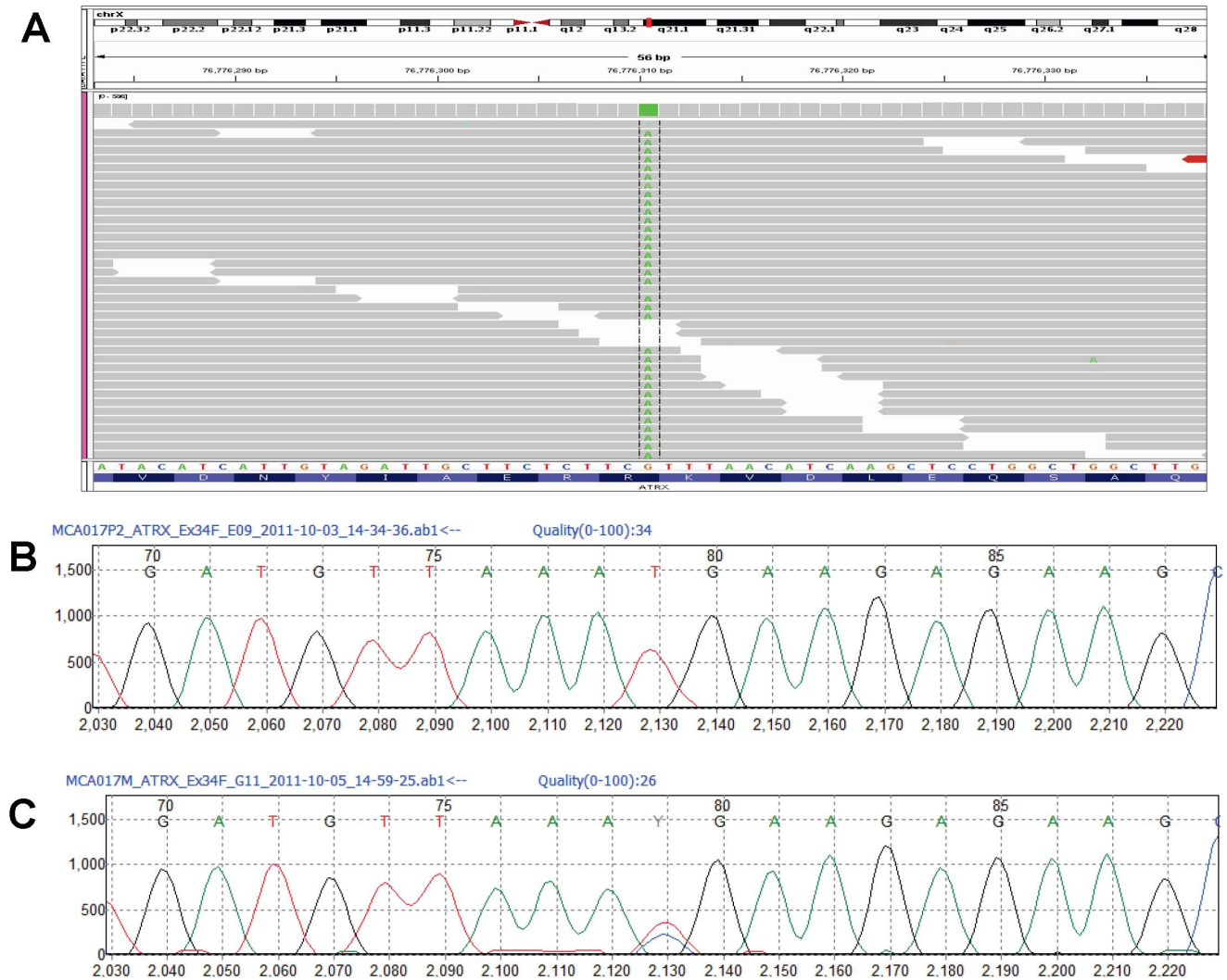
The average read depths achieved for the targeted regions were very high ( $>322\times$ ) and read depths of  $>20\times$  were achieved for 81–84% of the targets. There was some variation in coverage, with overall poor coverage for just three genes and poor coverage in a few exons for another 10 genes.

Targeted MPS detected the causative mutations in *LICAM* in Patient 1 and *ATRX* in Patient 2, which were consistent with their respective phenotypes. In Patient 1 the c.3458-1G>A mutation in the *LICAM* gene affected the splicing process and cDNA sequencing confirmed the presence of a truncated transcript. Mutations in the *LICAM* gene are associated with L1 syndrome, an X-linked recessive disorder. The major features of L1 syndrome include congenital hydrocephalus, adducted thumbs, spastic paraplegia, agenesis of the corpus callosum and cognitive impairment [6]. These features were all present in Patient 1. The c.3458-1G>A mutation in Patient 1 is novel but a splice site mutation at the same position (c.3458-1G>C) has been reported in a male with L1 syndrome [7].

In Patient 2, a p.R2386X mutation in the *ATRX* gene segregated with the clinical phenotypes in the family. Mutations in *ATRX* cause X-linked alpha thalassaemia mental retardation (ATR-X syndrome) in males, which is associated with profound







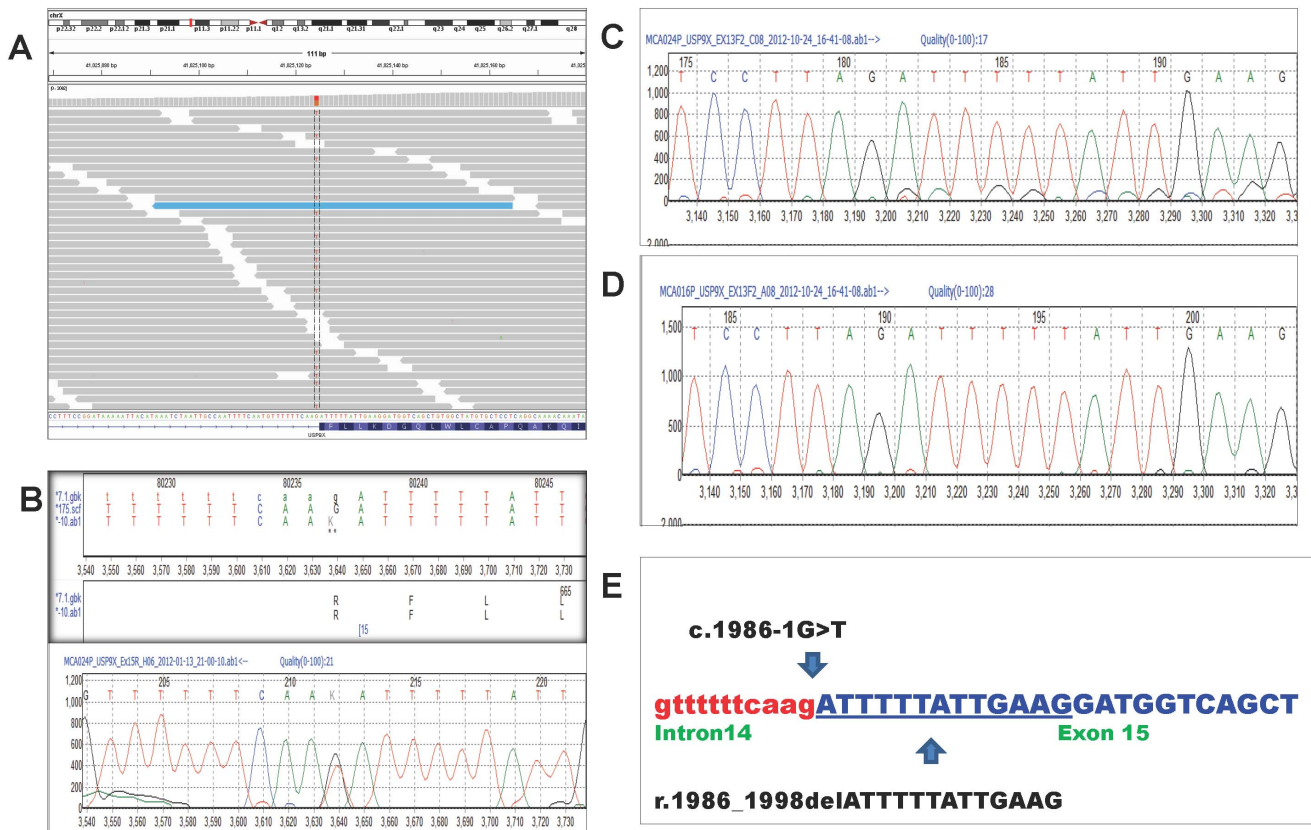
**Figure 3. *ATRX* p.R2386X mutation in Patient 2.** (A) IGV snapshot of c.7156C>T variant in *ATRX* (Chr X:76776310, hg19). (B) Sanger sequencing confirmation of c.7156C>T (p.R2386X, NM\_00489.3) in Patient 2. (C) Sanger sequencing showing heterozygous c.7156C>T variant in the mother. doi:10.1371/journal.pone.0093409.g003

is highly expressed in fetal brain and also in the cerebellum and cerebral cortex of the adult brain, and mutations in *AH11* cause Joubert Syndrome [20]. Genetic association has also been reported between *AH11* and autism [21]. The *AH11* variant E1086G is a pathogenic mutation in a case of Joubert syndrome [22]. The E1086G and D1179Y variants have been reported in the EVS database with a frequency of 0.008% and 0.033% respectively. *MAP7D3* has not been associated with autism spectrum disorders. There was one report of a truncating variant in *MAP7D3* in an X-linked mental retardation family that did not segregate with disease. The T335M variant has been reported in the EVS database with a frequency of 0.019% (2 of 10444 alleles).

Novel variants in *CREBBP*, *TSC1* and *FMRI* were detected in Patient 4. These genes have been associated with syndromic autism and were probably unlikely to be causative of her phenotypes as they were inherited from her healthy parents. Similarly there were interesting candidate variants in Patient 6 in *NIPAI* gene which has been associated with autism. Again these

variants were inherited and thus less likely to be causative of his autism spectrum disorder.

In Patient 7, variants were found in *SYNGAP1* and *SEMA5A* which have been linked to autism [23]. This patient also had a V528M variant in *FLNA* that has been reported in a case of bilateral periventricular nodular heterotopia [24] and also as a functional polymorphism [25]. Novel variants in *FOXP1*, *ATRX*, *AUTS2*, *CSMD1* were detected in Patient 8. All these genes have been associated with autism and other neurodevelopmental disorders. However, all these variants are inherited from her healthy parents and thus their role in her phenotype remains uncertain. In particular mutations and deletions in *FOXP1* have been shown to cause autism, mental retardation and speech and language deficits [26,27]. The A100G variant in *FOXP1* has been predicted to be damaging by PolyPhen 2 and SIFT. The novel V260I variant in *AUTS2* is also of interest. This variant is present only in *AUTS2* isoform 3, the shortest isoform comprised of 266 amino acids. The *AUTS2* gene was first identified as a candidate gene for autism when it was shown to be disrupted by a



**Figure 4. *USP9X* splice site mutation in Patient 3.** (A) IGV snapshot of c.1986-1G>T variant in *USP9X* (Chr X:41025124, hg19). (B) Sanger sequencing confirmation of c.1986-1G>T variant (NM\_001039590.2) in Patient 3. (C) Partial cDNA sequence showing expression of both the wild type and low level mutant allele with the 13 bp deletion. (D) Partial cDNA sequence of control patient. (E) Partial genomic DNA sequence of exon 15 (uppercase, blue) and intron 14 (lowercase, red) of *USP9X* gene showing the c.1986-1G>T variant (arrow) and the 13 bp deletion (r.1986\_1998delATT TTTATTGAAG) which is underlined. doi:10.1371/journal.pone.0093409.g004

translocation breakpoint in a pair of autistic twins [28]. Mutations in the *AUTS2* gene have also been identified in patients with mental retardation [29].

Patient 5 also had a 134 kb deletion at 9p21.1 affecting the 5'UTR and first two exons of the *LINGO2* gene. This deletion was not present in his mother and the father's DNA was not available for testing. Deletions affecting the *LINGO2* gene have been reported in a cohort of Utah autism patients [30]. There is a possibility that the 9p21.1 deletion could act in conjunction with other SNVs in Patient 5 to influence his phenotype. Recent publications have highlighted the potential effects of polygenic mutational events, variable expressivity, variable penetrance, and CNV burden on complex disorders like autism [31–34]. All these factors complicate the diagnosis of the causes of autism spectrum disorders. The unavailability of some parental samples and the lack of complete phenotyping of parents in our study also limit the ability to predict the causality of some of the variants detected.

Despite the progress in genetic testing, 50–60% of the causes of DD/ID remain unknown. This is unfortunate as a clinical diagnosis of DD/ID provides crucial information for diagnostics and helps in understanding the mechanisms of the disease including the options for management and treatment. In addition,

it puts an end to the testing odyssey and gives families closure and may also be important for future reproductive decisions.

This pilot study has confirmed the value of targeted MPS for investigating DD/ID and multiple congenital anomalies in children for diagnostic purposes. Causative mutations were found in two of the eight patients tested and a likely causal mutation was found in another patient. For the other five patients, no conclusions can be made about the variants as no compelling *de novo* variants were found. Thus, targeted gene MPS was less likely to provide a genetic diagnosis for children whose phenotype includes autism.

The advantages of targeted gene sequencing as opposed to whole exome sequencing is the increase in numbers of patients who could be sequenced and hence an increase in the number of patients who might receive a diagnosis. With targeted gene sequencing a greater depth of coverage could be achieved at a lower cost. The increased depth will facilitate the detection of indels that might be missed by exome sequencing. Targeted sequencing also obviates the problem of incidental results. Clinical interpretation of novel variants remains challenging but should gradually become easier with the continued development of variant databases of healthy controls as well as locus-specific disease databases.

**Table 3.** Assessed candidate variants found in patients 4–8.

| Patient | Gene           | Coordinates (hg19) | Nucleotide change | Amino acid change | Prediction<br>PolyPhen-2 | SIFT        | Inheritance               |
|---------|----------------|--------------------|-------------------|-------------------|--------------------------|-------------|---------------------------|
| 4       | <i>CREBBP</i>  | Chr16:3820816      | G>A               | p.P879S           | Benign                   | Tolerated   | Maternal                  |
|         | <i>CTNNA3</i>  | Chr10:67829183     | T>C               | p.K681R           | Benign                   | Tolerated   | Paternal                  |
|         | <i>TSC1</i>    | Chr9:135804244     | T>C               | p.N6D             | Benign                   | Tolerated   | Maternal                  |
|         | <i>FMR1</i>    | ChrX:147019073     | A>G               | p.E360G           | Benign                   | Tolerated   | Maternal                  |
|         | <i>GPR50</i>   | ChrX:150348482     | C>T               | p.R143C           | Probably damaging        | Deleterious | Maternal                  |
|         | <i>ANKRD11</i> | Chr16:89346082     | C>T               | p.P2290S          | Benign                   | Tolerated   | Maternal                  |
|         | <i>CACNA1C</i> | Chr12:2800220      | A>G               | p.N2091S          | Benign                   | Tolerated   | Not maternal <sup>a</sup> |
| 5       | <i>AHI1</i>    | Chr6:135611614     | C>A               | p.D1179Y          | Benign                   | Deleterious | Not maternal <sup>a</sup> |
|         | <i>MAP7D3</i>  | ChrX:135314112     | G>A               | p.T335M           | Benign                   | Tolerated   | Maternal                  |
|         | <i>NIPA1</i>   | Chr15:23049158     | G>A               | p.P221S           | Possibly damaging        | Tolerated   | Maternal                  |
|         | <i>NIPA1</i>   | Chr15:23049147     | C>G               | p.Q224H           | Benign                   | Tolerated   | Maternal                  |
|         | <i>CTNND2</i>  | Chr5:11411650      | T>G               | p.E146A           | Possibly damaging        | Tolerated   | Paternal                  |
| 7       | <i>SYNGAP1</i> | Chr6:33411463      | C>G               | p.A1045G          | Benign                   | Tolerated   | Not tested                |
|         | <i>SEMA5A</i>  | Chr5:9318508       | C>A               | p.Q82H            | Benign                   | Deleterious | Not tested                |
|         | <i>AHI1</i>    | Chr6:13564371      | T>C               | p.E1086G          | Probably damaging        | Deleterious | Not tested                |
|         | <i>MAP7D3</i>  | ChrX:135310836     | C>T               | p.R611H           | Probably damaging        | Tolerated   | Not tested                |
|         | <i>FLNA</i>    | ChrX:153593613     | C>T               | p.V528M           | Probably damaging        | Deleterious | Not tested                |
|         | <i>FOXP1</i>   | Chr3:71102908      | G>C               | p.A100G           | Probably damaging        | Deleterious | Maternal                  |
|         | <i>AUTS2</i>   | Chr7:69755471      | G>A               | p.V260I           | Unknown                  | Tolerated   | Maternal                  |
| 8       | <i>ATRX</i>    | ChrX:76938923      | G>C               | p.P609A           | Benign                   | Tolerated   | Maternal                  |
|         | <i>CNTN3</i>   | Chr3:74420458      | T>A               | p.I183L           | Benign                   | Tolerated   | Maternal                  |
|         | <i>C3MD1</i>   | Chr8:2800085       | C>T               | p.G1374S          | Unknown                  | Deleterious | Paternal                  |
|         | <i>DMD</i>     | ChrX:32364161      | G>C               | p.Q1829E          | Benign                   | Tolerated   | Maternal                  |

<sup>a</sup>Father's DNA not available.  
doi:10.1371/journal.pone.0093409.t003



## Supporting Information

**Table S1** List of 355 genes in the targeted sequencing panel. (XLS)

## References

- Chelly J, Khelifaoui M, Francis F, Cherif B, Bienvu T (2006) Genetics and pathophysiology of mental retardation. *Eur J Hum Genet* 14: 701–713.
- Meder B, Haas J, Keller A, Heid C, Just S, et al. (2011) Targeted next-generation sequencing for the molecular genetic diagnostics of cardiomyopathies. *Circ Cardiovasc Genet* 4: 110–122.
- Brownstein Z, Friedman LM, Shahin H, Oron-Karni V, Kol N, et al. (2011) Targeted genomic capture and massively parallel sequencing to identify genes for hereditary hearing loss in Middle Eastern families. *Genome Biol* 12: R89.
- Lemke JR, Riesch E, Scheurenbrand T, Schubach M, Wilhelm C, et al. (2012) Targeted next generation sequencing as a diagnostic tool in epileptic disorders. *Epilepsia* 53: 1387–1398.
- Neveling K, Collin RW, Gilissen C, van Huet RA, Visser L, et al. (2012) Next-generation genetic testing for retinitis pigmentosa. *Hum Mutat* 33: 963–972.
- Finckh U, Schroder J, Ressler B, Veske A, Gal A (2000) Spectrum and detection rate of L1CAM mutations in isolated and familial cases with clinically suspected L1-disease. *Am J Med Genet* 92: 40–46.
- Rehnberg M, Jonasson J, Gunnarsson C (2011) Novel L1CAM splice site mutation in a young male with L1 syndrome. *Am J Med Genet A* 155A: 439–441.
- Gibbons R (2006) Alpha thalassaemia-mental retardation, X linked. *Orphanet J Rare Dis* 1: 15.
- Gibbons RJ, Wada T, Fisher CA, Malik N, Mitson MJ, et al. (2008) Mutations in the chromatin-associated protein ATRX. *Hum Mutat* 29: 796–802.
- Latif ZA OS, Lau D, Wong SW, Ong LC, Aziz DA, et al. (2013) Alpha-thalassaemia mental retardation syndrome: A case report of two affected siblings. *Journal of Pediatric Neurology* 11: 67–70.
- Dupont S, Mamidi A, Cordenonsi M, Montagner M, Zacchigna L, et al. (2009) FAM/USP9x, a deubiquitinating enzyme essential for TGFbeta signaling, controls Smad4 monoubiquitination. *Cell* 136: 123–135.
- Jolly LA, Taylor V, Wood SA (2009) USP9X enhances the polarity and self-renewal of embryonic stem cell-derived neural progenitors. *Mol Biol Cell* 20: 2015–2029.
- Jones MH, Furlong RA, Burkin H, Chalmers IJ, Brown GM, et al. (1996) The *Drosophila* developmental gene fat facets has a human homologue in Xp11.4 which escapes X-inactivation and has related sequences on Yq11.2. *Hum Mol Genet* 5: 1695–1701.
- Pantaleon M, Kanai-Azuma M, Mattick JS, Kaibuchi K, Kaye PL, et al. (2001) FAM deubiquitylating enzyme is essential for preimplantation mouse embryo development. *Mech Dev* 109: 151–160.
- Tarpey PS, Smith R, Pleasance E, Whibley A, Edkins S, et al. (2009) A systematic, large-scale resequencing screen of X-chromosome coding exons in mental retardation. *Nat Genet* 41: 535–543.
- Carter MT, Scherer SW (2013) Autism spectrum disorder in the genetics clinic: a review. *Clin Genet* 83: 399–407.
- Neale BM, Kou Y, Liu L, Ma'ayan A, Samocha KE, et al. (2012) Patterns and rates of exonic de novo mutations in autism spectrum disorders. *Nature* 485: 242–245.
- O'Roak BJ, Vives L, Fu W, Egerton JD, Stanaway IB, et al. (2012) Multiplex targeted sequencing identifies recurrently mutated genes in autism spectrum disorders. *Science* 338: 1619–1622.
- Sanders SJ, Murtha MT, Gupta AR, Murdoch JD, Raubeson MJ, et al. (2012) De novo mutations revealed by whole-exome sequencing are strongly associated with autism. *Nature* 485: 237–241.
- Ferland RJ, Eyaid W, Collura RV, Tully LD, Hill RS, et al. (2004) Abnormal cerebellar development and axonal decussation due to mutations in AH11 in Joubert syndrome. *Nat Genet* 36: 1008–1013.
- Alvarez Retuerto AI, Cantor RM, Gleeson JG, Ustaszewska A, Schackwitz WS, et al. (2008) Association of common variants in the Joubert syndrome gene (AH11) with autism. *Hum Mol Genet* 17: 3887–3896.
- Kroes HY, van Zon PH, Franssen van de Putte D, Nelen MR, Nievelstein RJ, et al. (2008) DNA analysis of AH11, NPHP1 and CYCLIN D1 in Joubert syndrome patients from the Netherlands. *Eur J Med Genet* 51: 24–34.
- Betancur C (2011) Etiological heterogeneity in autism spectrum disorders: more than 100 genetic and genomic disorders and still counting. *Brain Res* 1380: 42–77.
- Kakita A, Hayashi S, Moro F, Guerrini R, Ozawa T, et al. (2002) Bilateral periventricular nodular heterotopia due to filamin 1 gene mutation: widespread glomeruloid microvascular anomaly and dysplastic cytoarchitecture in the cerebral cortex. *Acta Neuropathol* 104: 649–657.
- Kunishima S, Ito-Yamamura Y, Hayakawa A, Yamamoto T, Saito H (2010) FLNA p.V528M substitution is neither associated with bilateral periventricular nodular heterotopia nor with macrothrombocytopenia. *J Hum Genet* 55: 844–846.
- Hamdan FF, Daoud H, Rochefort D, Piton A, Gauthier J, et al. (2010) De novo mutations in FOXP1 in cases with intellectual disability, autism, and language impairment. *Am J Hum Genet* 87: 671–678.
- Horn D, Kapeller J, Rivera-Brugues N, Moog U, Lorenz-Depiereux B, et al. (2010) Identification of FOXP1 deletions in three unrelated patients with mental retardation and significant speech and language deficits. *Hum Mutat* 31: E1851–1860.
- Sultana R, Yu CE, Yu J, Munson J, Chen D, et al. (2002) Identification of a novel gene on chromosome 7q11.2 interrupted by a translocation breakpoint in a pair of autistic twins. *Genomics* 80: 129–134.
- Kalscheuer VM, FitzPatrick D, Tommerup N, Bugge M, Niebuhr E, et al. (2007) Mutations in autism susceptibility candidate 2 (AUTS2) in patients with mental retardation. *Hum Genet* 121: 501–509.
- Matsunami N, Hadley D, Hensel CH, Christensen GB, Kim C, et al. (2013) Identification of rare recurrent copy number variants in high-risk autism families and their prevalence in a large ASD population. *PLoS One* 8: e52239.
- Coe BP, Girirajan S, Eichler EE (2012) The genetic variability and commonality of neurodevelopmental disease. *Am J Med Genet C Semin Med Genet* 160C: 118–129.
- Devlin B, Scherer SW (2012) Genetic architecture in autism spectrum disorder. *Curr Opin Genet Dev* 22: 229–237.
- Girirajan S, Rosenfeld JA, Cooper GM, Antonacci F, Siswara P, et al. (2010) A recurrent 16p12.1 microdeletion supports a two-hit model for severe developmental delay. *Nat Genet* 42: 203–209.
- Leblond CS, Heinrich J, Delorme R, Proepper C, Betancur C, et al. (2012) Genetic and functional analyses of SHANK2 mutations suggest a multiple hit model of autism spectrum disorders. *PLoS Genet* 8: e1002521.

## Author Contributions

Conceived and designed the experiments: MB PT ECT. Performed the experiments: ZJZ PT. Analyzed the data: MB JM SR. Contributed reagents/materials/analysis tools: AL EST IN LCO BC. Wrote the paper: MB SR ECT.