

Maintenance of chondrocyte phenotype during expansion on PLLA microtopographies

Journal of Tissue Engineering
Volume 9: 1–10
© The Author(s) 2018
Reprints and permissions:
sagepub.co.uk/journalsPermissions.nav
DOI: 10.1177/2041731418789829
journals.sagepub.com/home/tej



Elisa Costa¹, Cristina González-García³, José Luis Gómez Ribelles^{1,2}
and Manuel Salmerón-Sánchez^{1,2,3} 

Abstract

Articular chondrocytes are difficult to grow, as they lose their characteristic phenotype following expansion on standard tissue culture plates. Here, we show that culturing them on surfaces of poly(L-lactic acid) of well-defined microtopography allows expansion and maintenance of characteristic chondrogenic markers. We investigated the dynamics of human chondrocyte dedifferentiation on the different poly(L-lactic acid) microtopographies by the expression of collagen type I, collagen type II and aggrecan at different culture times. When seeded on poly(L-lactic acid), chondrocytes maintained their characteristic hyaline phenotype up to 7 days, which allowed to expand the initial cell population approximately six times without cell dedifferentiation. Maintenance of cell phenotype was afterwards correlated to cell adhesion on the different substrates. Chondrocytes adhesion occurs via the $\alpha_5\beta_1$ integrin on poly(L-lactic acid), suggesting cell–fibronectin interactions. However, $\alpha_2\beta_1$ integrin is mainly expressed on the control substrate after 1 day of culture, and the characteristic chondrocytic markers are lost (collagen type II expression is overcome by the synthesis of collagen type I). Expanding chondrocytes on poly(L-lactic acid) might be an effective solution to prevent dedifferentiation and improving the number of cells needed for autologous chondrocyte transplantation.

Keywords

Poly(L-lactic acid), chondrocyte dedifferentiation, cell adhesion, integrins

Date received: 6 April 2018; accepted: 26 June 2018

Introduction

Several phenomena account for the inability of articular cartilage to self-repair, such as the avascular nature of the tissue, the limited ability of chondrocytes to migrate into the site of injury, and the absence of mesenchymal cells and a fibrin clot into which cells can migrate.^{1,2} Tissue engineering techniques based on the use of autologous chondrocytes could lead to the regeneration of the damaged cartilage, but it is difficult to obtain sufficient number of cells. This technique involves the biopsy of a small non-bearing site in the joint, the enzymatic digestion of the extracellular matrix (ECM) and isolation of chondrocytes. To increase the number of isolated chondrocytes, cells are cultured in vitro. The major limitation of this technique is chondrocyte dedifferentiation during expansion in monolayer culture: the phenotype of chondrocytes is unstable, and they dedifferentiate into fibroblast-like cells, collagen type II is down regulated during cell division, and in return, cells start producing collagen type I

and changing the pattern of proteoglycan synthesis.^{3–6} As a consequence, chondrocytes expanded in vitro do not maintain their characteristic phenotype and, consequently, their ability to regenerate damaged cartilage is impaired. Dedifferentiated chondrocytes do not synthesize the

¹Centre for Biomaterials and Tissue Engineering (CBIT), Universitat Politècnica de València, Valencia, Spain

²Biomedical Research Networking Center in Bioengineering, Biomaterials and Nanomedicine (CIBER-BBN), Valencia, Spain

³Centre for the Cellular Microenvironment, University of Glasgow, Glasgow, UK

Corresponding author:

Manuel Salmerón-Sánchez, Centre for the Cellular Microenvironment, School of Engineering, Rankine Bld, Oakfield Av, G12 8LT, University of Glasgow, Glasgow, UK.

Email: Manuel.Salmeron-Sanchez@glasgow.ac.uk



adequate ECM, instead, a fibrous tissue containing collagen type I is produced, which is not able to resist the external mechanical solicitations.

Even though a broad set of substrates have been investigated, chondrocyte dedifferentiation during expansion in monolayer culture has not been solved yet.^{7–11} The maintenance of chondrocyte phenotype in monolayer culture is usually achieved by keeping their characteristic rounded-like morphology. Chondrocytes grown on collagen type II maintained their phenotype for more than two weeks *in vitro*, but the number of cells decreased as a function of time.¹² Culturing at high cell densities has also been shown to be an efficient method to avoid chondrocyte dedifferentiation. After 21 days in Petri dish culture, an extensive ECM of collagen type II was produced, but lacking any cell proliferation.^{13,14}

The re-differentiation of dedifferentiated human chondrocytes obtained after monolayer expansion has been investigated as a source to get enough cells for autologous chondrocyte transplantation. Several strategies have been proposed, which include the growth of dedifferentiated chondrocytes from monolayer passages P1-P4 in high-density cultures¹⁵ and then re-seeding dedifferentiated chondrocytes on plasma-treated polymers in both serum-containing and serum-free media.¹⁶ The dedifferentiation of chondrocytes in culture is usually associated with changes in cell morphology, from a rounded to a spread one. However, cell morphology is not always linked to phenotype.⁵ It has been shown that the loss of hallmarks for differentiated chondrocytes – chondroitin sulphate proteoglycan (CSPG) and collagen type II expression – is coincident with the presence of well-defined F-actin cables within the cytoplasm.¹⁷ Moreover, chemically induced dedifferentiated chondrocytes re-express collagen type II and aggregating proteoglycans, after modifying actin filaments with dihydrocytochalasin B to disassemble actin filaments in the cell periphery.^{18,19}

We have shown the absence of F-actin fibres on chondrocytes expanded on poly(L-lactic acid) (PLLA) substrates, suggesting that cells are able to adhere and proliferate on PLLA, for up to 7 days, keeping their characteristic phenotype.²⁰ Chondrocytes grown in postconfluence, that is, the ones that are forced to grow on an already existing layer of cells dedifferentiate, as proved by the reorganization of F-actin cytoskeleton.²⁰

Here, we investigate the dynamics of chondrocyte dedifferentiation on PLLA substrates by following collagen type I, collagen type II and aggrecan expression as a function of time. A model is proposed in which chondrocytes adhere on PLLA through the $\alpha_5\beta_1$ integrin, characteristic for chondrocyte–fibronectin (FN) interaction. However, chondrocytes adhere via the $\alpha_2\beta_1$ integrin on the control surface to cell-secreted collagen type I, speeding up their dedifferentiation process.

Materials and methods

Materials

PLLA was synthesized by classical polycondensation procedures. Briefly, a glass polymerization reactor, equipped with a nitrogen flow-through inlet and a vacuum connection, was placed in a temperature-controlled bath containing silicone oil. Polymerization was performed in a nitrogen atmosphere at a temperature range of 100°C–150°C for 12–48 h. In order to remove residual monomers, chloroform and methanol were used as solvent and precipitant, respectively. The molecular weights of the polymer, M_n and M_w , were 58,000 and 132,000, respectively, evaluated by gel permeation chromatography (Shimadzu, LC 10A, Japan) using polystyrene (PS) as standard and chloroform as solvent. Samples for atomic force microscopy (AFM) and cell culture were casted from a 1 wt% solution in chloroform on Petri dishes and afterward cut in circular shapes ($\phi = 13$ mm). The thickness of the polymer layer was around 5 μm , estimated from the weight of the sample and the PLLA density.

Substrates

The thermal treatments started with annealing the sample for 2 min at 200°C, it was then cooled to the crystallization temperature, 110°C and maintained for 2 h. A set of samples was prepared by quenching from the melt to room temperature to obtain an amorphous-smooth sample. Surfaces of the samples are highly reproducible (for the same thermal treatment) as checked by AFM.

Chondrocyte isolation

Human articular cartilage from the knee of a patient undergoing total knee arthroplasty was processed for chondrocyte isolation. Briefly, the cartilage tissue was aseptically dissected from the joint, minced, and washed with Dulbecco's modified Eagle's medium (DMEM; Life Technologies). Then, cartilage was incubated for 30 min with a 0.5 mg/ml hyaluronidase (Sigma-Aldrich) solution and for 1 h with a 1 mg/ml pronase (Merck) solution in a shaking water bath at 37°C. After that, cartilage fragments were washed with DMEM and incubated with a 0.5 mg/ml collagenase-IA (Sigma-Aldrich) solution in a shaking water bath at 37°C overnight. The resulting cell suspension was filtered with a 70- μm cell strainer (BD Biosciences) to remove any undigested tissue, and collagenase was rinsed off with DMEM containing 10% foetal bovine serum (FBS; Invitrogen SA). Finally, the cell suspension obtained was transferred in DMEM supplemented with 10% FBS and 50 $\mu\text{g}/\text{ml}$ ascorbic acid (Sigma-Aldrich) to a 75-cm² tissue culture flask (Nunc) and maintained at 37°C, in a humidified atmosphere under 5% CO₂. The culture medium was replaced every 2 days, and cells were

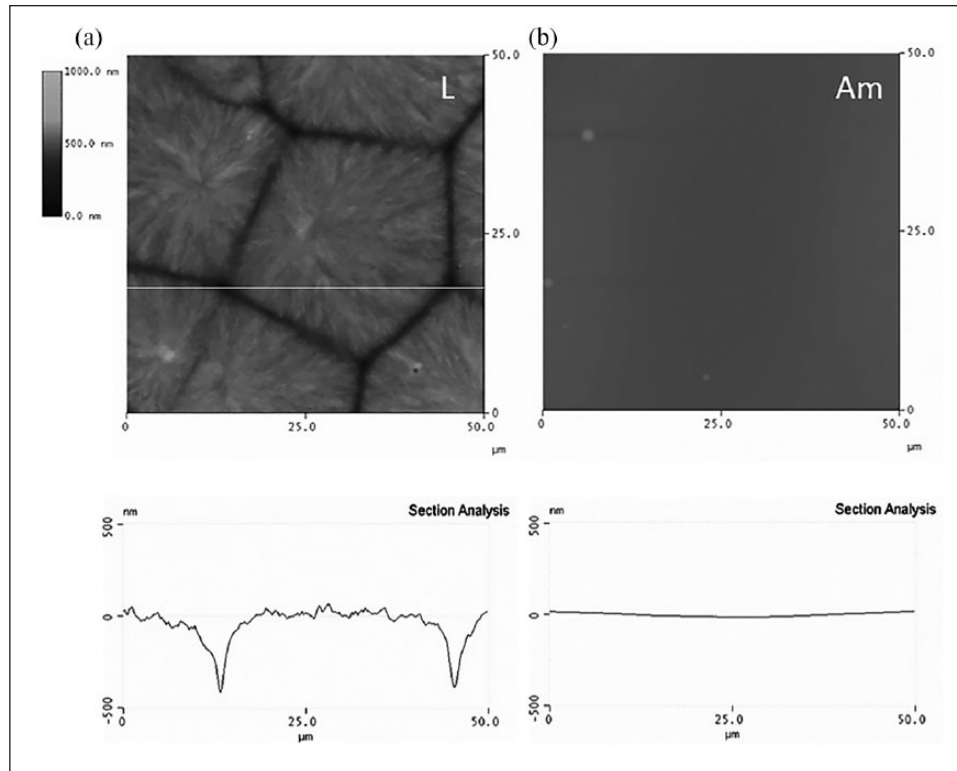


Figure 1. PLLA microtopographies as observed by atomic force microscopy (AFM). Images show the height magnitude using the same scale. A cross-section of each sample is shown at the bottom for the line shown on the figures. (a) Large spherulites (L) and (b) amorphous sample (Am).

allowed to grow until subconfluence. Then, cells were harvested by trypsinisation and counted with a haemocytometer for experiments on PLLA.

Cell culture

PLLA films pre-sterilized with 25 kGy gamma radiation were placed in a 24-well tissue culture plate and were soaked in culture medium for 72 h before cell seeding. Then, 1 ml (10^4 cells) of chondrocytes was placed onto the polymer films and was maintained at 37°C, in a humidified atmosphere under 5% CO₂ for 1, 3 and 7 days. The culture medium used was DMEM, supplemented with 10% FBS and 50 μg/ml ascorbic acid, and it was renewed every 2–3 days. Each experiment was performed in triplicate per topography and Permanox® slides served as the control substrate.

Immunofluorescence and cytoskeletal observation

After 1, 3 and 7 days of culture chondrocytes were washed in phosphate-buffered saline (PBS) and fixed in formalin solution (Sigma) at 4°C for 1 h. Afterwards, the samples were rinsed with PBS, and a permeabilising buffer (10.3-g sucrose, 0.292-g NaCl, 0.06-g MgCl₂, 0.476-g Hepes buffer, 0.5-ml Triton X, in 100 ml of water, pH=7.2) was added at 4°C for 5 min. In order to reduce the background

signal, the samples were then incubated in 1% bovine serum albumin (BSA)/PBS at 37°C for 5 min. Afterwards, samples were incubated in primary antibodies at 37°C for 1 h: rabbit anti-human polyclonal antibody, anti-col-I (1:10 in 1% BSA/PBS, Chemicon International); mouse anti-human monoclonal antibody, anti-col-II (1:50 in 1% BSA/PBS, Chemicon International); mouse anti-human monoclonal antibody, anti-Agg (1:50 in 1% BSA/PBS, Invitrogen); mouse anti-human monoclonal antibody, anti-β1 integrin (1:50 in 1% BSA/PBS, Beckman Coulter); mouse anti-human monoclonal antibody, anti-α₅ integrin (1:50 in 1% BSA/PBS, Immunotech); mouse anti-human monoclonal antibody, anti-α₂ integrin (1:50 in 1% BSA/PBS, Beckman Coulter). Samples were then rinsed in 0.5% Tween 20/PBS three times. Then, Cy3-conjugated rabbit anti-mouse or goat anti-rabbit secondary antibody (1:200 in 1% BSA/PBS, Jackson ImmunoResearch) was added at 37°C for 1 h. Finally, samples were washed before being mounted in Vectashield (Vector Laboratories). A Leica DM6000B fluorescent microscope was used. The image system was equipped with a Leica DFC350FX camera.

Results

PLLA substrates

Figure 1 shows AFM images (height signal) of PLLA after different thermal treatments, which give rise to surfaces

Table 1. Roughness parameters of the samples: R_a is the arithmetic average of the height deviations from the centre plane; R_{ms} is defined as the standard deviation of the height values; and R_{max} is the difference between the highest and lowest heights. 'Size' means the length of the square used to measure roughness.

Sample ID	R_a /nm	R_{ms} /nm	R_{max} /μm	Size/μm
L	153.02	188.58	1.01	50
Am	22.58	33.44	0.23	50

L: large spherulites; AM: amorphous sample.

with different microtopographies. A more detail inspection on the effect of thermal history and spherulitic development in PLLA was reported before.²¹ The isothermal crystallization at 110°C after a temperature jump from the melt produces large spherulites, approximately 30–50 μm diameter (Figure 1(a)). The height difference between highest and lowest regions is in the range of 1 μm. By quenching the material from the melt to the glass, amorphous-smooth and flat samples are obtained. These two types of samples will be called hereafter L and Am, respectively, in reference to the size of the spherulites (Large) and to the amorphous character of the sample (Am). The surface roughness for the different samples has been calculated on 50 × 50 μm² (Table 1).

Chondrocyte dedifferentiation

Figure 2 shows immunofluorescence for collagen type I and collagen type II on the PLLA substrates and the control Permanox after 1, 3 and 7 days. After 1 day of culture, some traces of collagen type I are present on both chondrocytes cultured on PLLA and the control substrate. However, collagen type II is revealed only on those cells adhered on PLLA substrates but not on the control. After 3 days of culture (Figure 2), a well-developed collagen type I ECM has been elaborated by chondrocytes seeded on the control but not on PLLA, which only displays some intracellular collagen type I shadows. As time goes by, collagen type II is maintained on chondrocytes cultured on PLLA, but it disappears completely on the control substrate (Figure 2). After 7 days of culture, the situation is different, the presence of extracellular collagen type I is observed on every substrate, but the density of the network formed is much higher on the control than on PLLA, which shows only some areas of its surface covered by collagen type I fibrils, but still a significant number of collagen type I free cells are observed. Concerning collagen type II, there is no trace of it on the control substrate (only nuclei are observed in Figure 2), but it is clearly depicted on those chondrocytes expanded on PLLA.

The temporal sequence shown in Figure 2 can be quantified (in a relative way) by the intensity of

the fluorescence as shown in Figure 3. Collagen type I intensity increases at the same rate for cells on both PLLA and the control substrate but with approximately one order of magnitude lower intensity on PLLA. However, collagen type II displays already very low intensity on the control after 1 day of culture, whereas on PLLA, it increases up to the third day of culture and then remains approximately constant up to the seventh day of culture. Simultaneously, cell density increases steadily from $5 \times 10^3 \pm 500$ (initially) to $30 \times 10^3 \pm 800$ cells cm⁻² (day 7), that is, the initial cell population is increased approximately six times.

Aggrecan production (Figure 4) was also followed by immunofluorescence both on the control substrate and PLLA. Aggrecan is observed in the ECM after 7 days of culture on PLLA. However, even if there are some aggrecan traces after 1 day of culture, most of it is already completely lost after 3 days of culture on the control permanox (Figure 4 shows cells on the control substrate after 3 days of culture, only nuclei counterstained with 4',6-diamidino-2-phenylindole (DAPI) can be observed. The picture also represents the situation on the control substrate for 1 and 7 days of culture).

Cell adhesion

Cell adhesion was studied via immunofluorescence making use of monoclonal antibodies against the α_5 , β_1 and α_2 subunits of integrin receptors after different culture times. $\alpha_5\beta_1$ integrin mediates interaction with fibronectin, while $\alpha_2\beta_1$ is specific for collagen. α_5 integrin is expressed on PLLA after 1, 3 and 7 days (note that for this last culture, time is not evenly distributed for all cells, Figure 5). However, integrin α_5 is observed on the control substrate after 1 day of culture but not after 3 and 7 days (Figure 5).

β_1 integrin subunit does follow the trend of α_5 integrin on PLLA substrates, that is, β_1 integrin is expressed on PLLA after 1, 3 and 7 days, evenly distributed throughout the sample. Moreover, unlike α_5 , β_1 is also extensively visible on the control substrate for every culture time (Figure 6).

On the other hand, α_2 integrin is expressed on the control substrate after 1, 3 and 7 days of culture; but only after 7 days for cells on PLLA (i.e., there is no α_2 staining after 1 and 3 days of culture on PLLA).

Discussion

Chondrocyte expansion in monolayer leads to dedifferentiation towards fibroblast-like cells: type I collagen is upregulated, and the pattern of proteoglycan synthesis is modified.^{3–6} Intense research has been done to identify substrates onto which chondrocyte phenotype was maintained; that is, substrates on which chondrocytes can be expanded remaining functional for clinical use afterwards. Chondrocyte culture on different protein monolayers did not alter cell tendency towards dedifferentiation, and

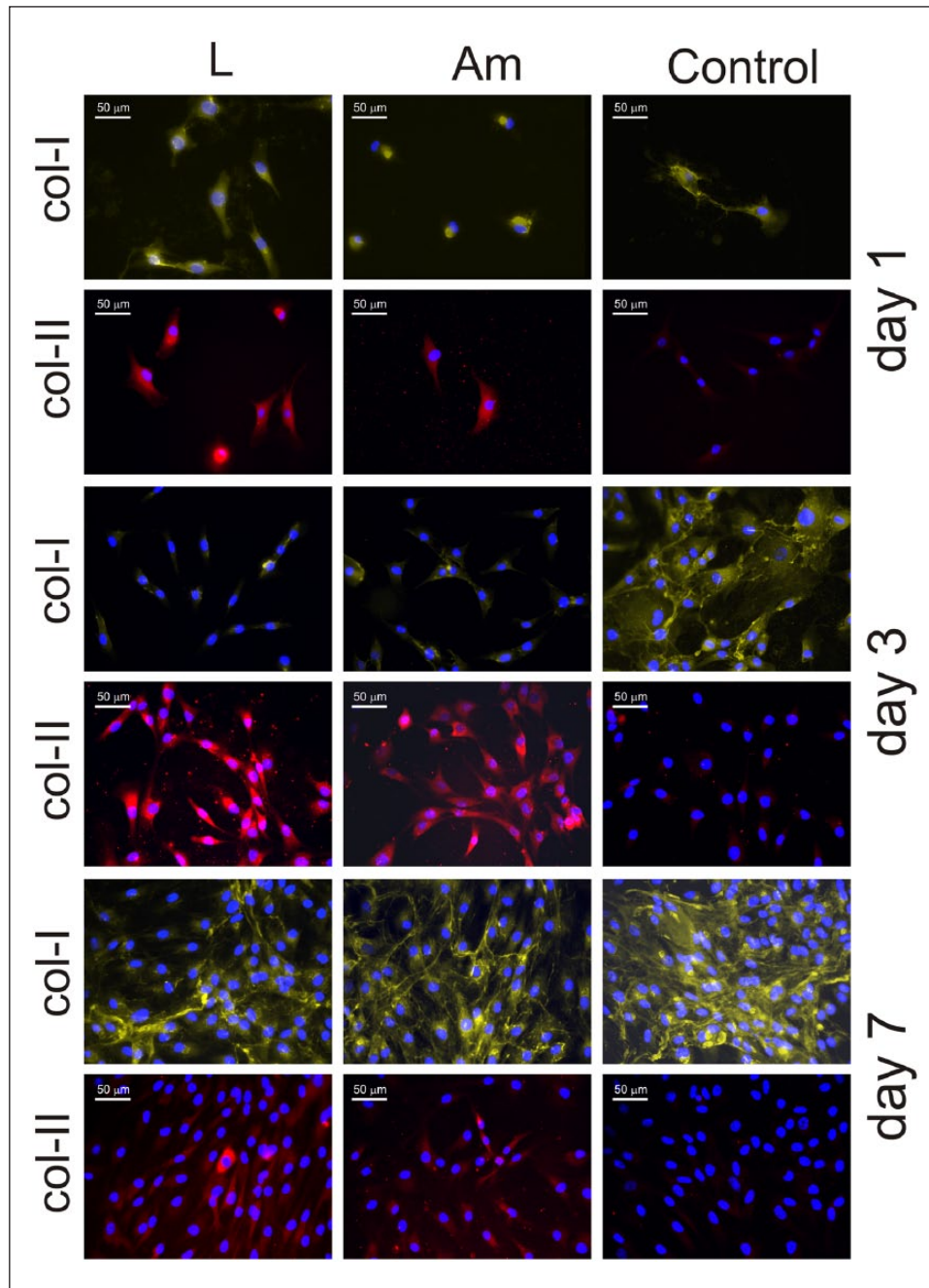


Figure 2. Immunofluorescence for collagen type I (col-I) and collagen type II (col-II) after different culture times (1, 3 and 7 days) on both PLLA (large spherulites and amorphous sample) and the control substrate. Nuclei were counterstained with DAPI.

signalling cascades were dominated by cell-matrix deposition.^{6–11,22–29} Our results show that even if chondrocytes dedifferentiate on PLLA, the dynamics of the process is slow enough to increase the cell population while collagen type II and aggrecan continue to be the major ECM components (Figures 2 and 3). Furthermore, our results are supported by the lack of F-actin cytoskeleton development after 7 days of chondrocyte culture on PLLA;²⁰ whose presence within the cytoskeleton is associated to chondrocyte dedifferentiation.¹⁷

Chondrocyte morphology is strongly affected by the microtopography of the PLLA substrates.²⁰ The presence of microgrooves between well-defined spherulites results in more elongated chondrocytes. Spread cells on amorphous PLLA transform into elongated ones, growing in a characteristic direction and even promoting isolated cells on bigger spherulites (L sample).²⁰ However, the dynamics of chondrocyte dedifferentiation is not affected by the underlying microtopography of the substrate (Figure 2): the time evolution for collagen type I and collagen type II

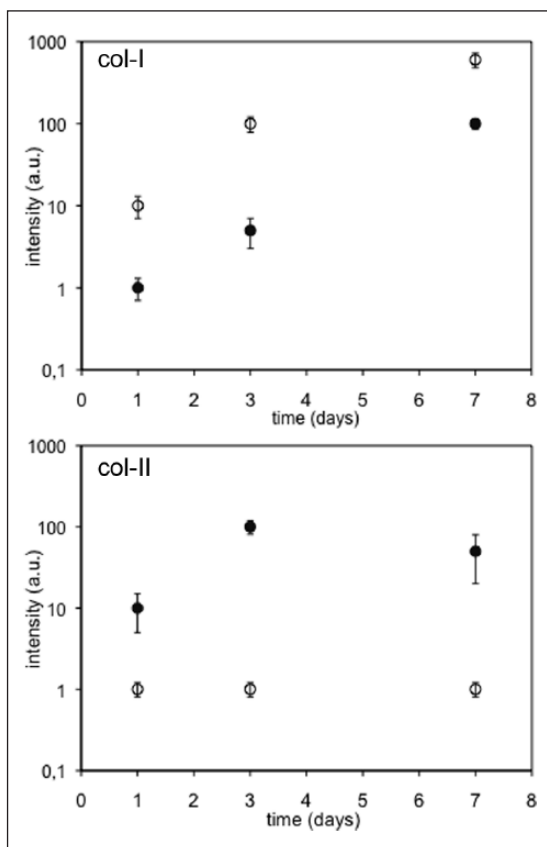


Figure 3. Semi-quantitative analysis for the intensity of the fluorescence to characterize the relative amount of collagen type I (col-I) and collagen type II (col-II) after different culture times on PLLA (open symbols) and the control substrate (filled symbols). The bar is the standard deviation for at least three images.

follows the same pattern on both big spherulites (L sample) and the amorphous PLLA (Am). This finding supports the idea that changes in cell morphology are not always linked to phenotype expression.¹⁷

Cell adhesion to the ECM plays a central role in the formation, maintenance and repair of numerous tissues, and it is primarily mediated by the integrin family of adhesion receptors. On synthetic materials, it is usually mediated by ECM proteins, mainly FN, adsorbed onto its surface.^{30–32} The distribution, conformation and strength of adhesion between the protein and the substrate modulate the cell-material interaction.^{33–36} It is well known that fibronectin conformation on a synthetic material depends on surface properties, including chemistry, wettability, hydrophilicity and micro/nano roughness of the sample.^{36–39} FN in solution is in a compact-globular conformation.^{40,41} Surfaces of different nature have shown to alter the native globular conformation of the FN molecule upon adsorption, altering its biological activity, especially on slightly charged substrates.^{36,39,42} Our results suggest that FN is adsorbed on PLLA in a conformation that allows

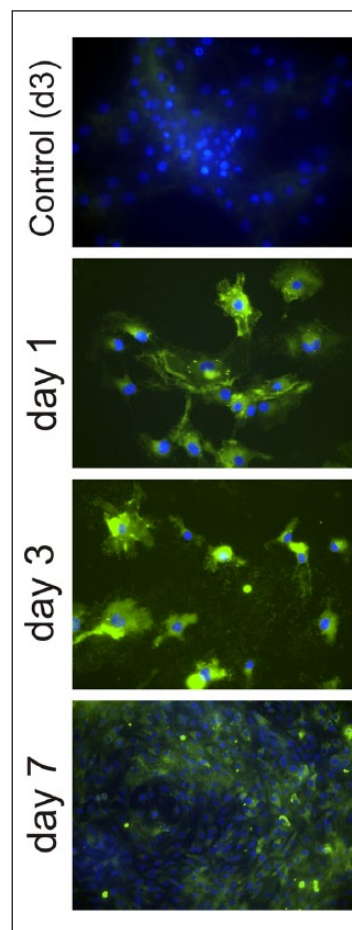


Figure 4. Immunofluorescence for aggrecan after different culture times (1, 3 and 7 days) on both PLLA (L surfaces) and the control substrate (only one picture after 3 days of culture is shown for the control substrate, as no aggrecan was found at any culture time). Nuclei were counterstained with DAPI.

chondrocytes to proliferate while maintaining its characteristic, non-differentiated, phenotype until cell confluence is reached. We hypothesize that integrin-mediated adhesion on PLLA, also determines the dynamics of chondrocyte dedifferentiation on monolayer cultures.

The importance of $\alpha_5\beta_1$ integrin in maintenance of chondrocyte phenotype has been discussed in the literature. In vivo, lack of expression of the $\alpha_5\beta_1$ integrin resulted in hypertrophic chondrocytes.⁴³ Chondrocyte adhesion to cartilage, in vitro, is mediated by the $\alpha_5\beta_1$ integrin.⁴⁴ Besides, $\alpha_5\beta_1$ mediates adhesion, spreading, proliferation and colony formation of chondrocytes; furthermore, it has been proposed that the interaction of $\alpha_5\beta_1$ with fibronectin could exert a positive regulatory role in proliferation of chondrocytes in vitro.⁴⁵ $\alpha_5\beta_1$ integrin may function as a fundamental chondrocytic mechanoreceptor, most likely through interactions with FN, which may transmit the mechanical forces from the ECM to the cell surface.⁴⁶ On the other hand, chondrocytes synthesize

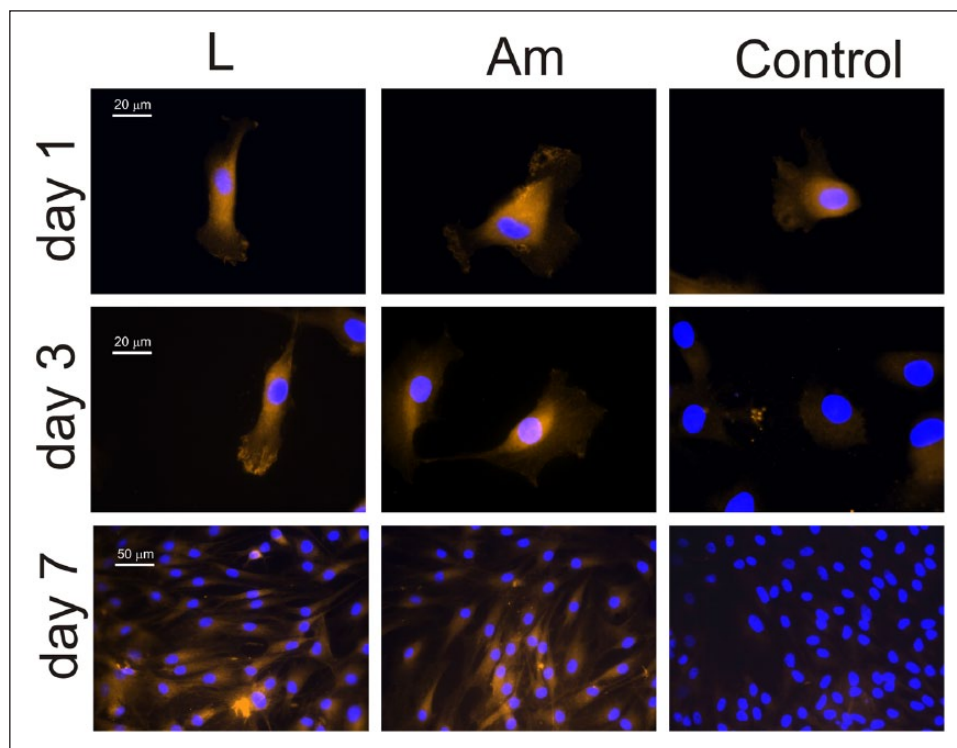


Figure 5. Immunofluorescence for the α_5 integrin after different culture times (1, 3 and 7 days) on both PLLA (large spherulites and amorphous sample) and the control substrate. Nuclei were counterstained with DAPI.

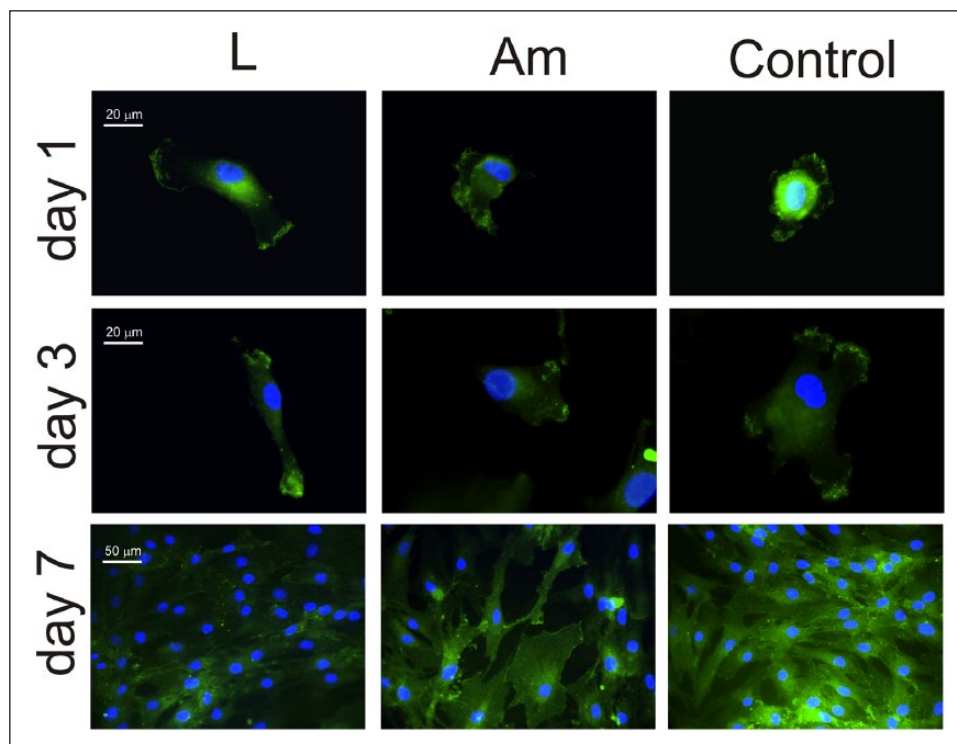


Figure 6. Immunofluorescence for the β_1 integrin after different culture times (1, 3 and 7 days) on both PLLA (large spherulites and amorphous sample) and the control substrate. Nuclei were counterstained with DAPI.

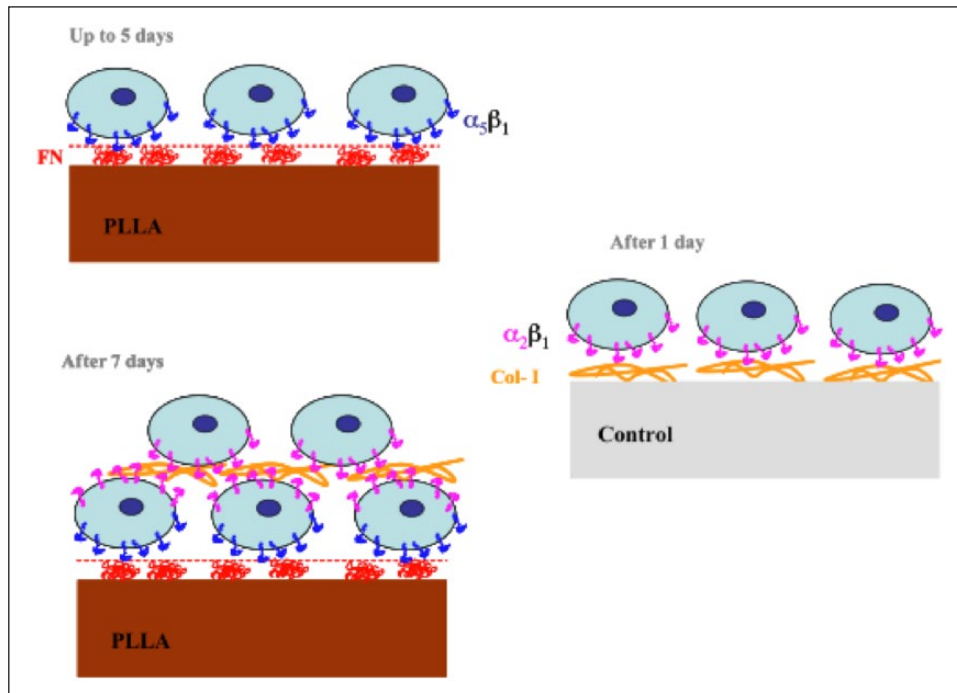


Figure 7. Model for chondrocyte adhesion on PLLA substrates. FN adsorbed in a conformation that enhances $\alpha_5\beta_1$ integrin expression which leads to chondrocyte proliferation without dedifferentiation. After confluence, cells are forced to grow on several layers which results in collagen type I production and the loss of the characteristic markers as it happens, with faster dynamics, on the control substrate.

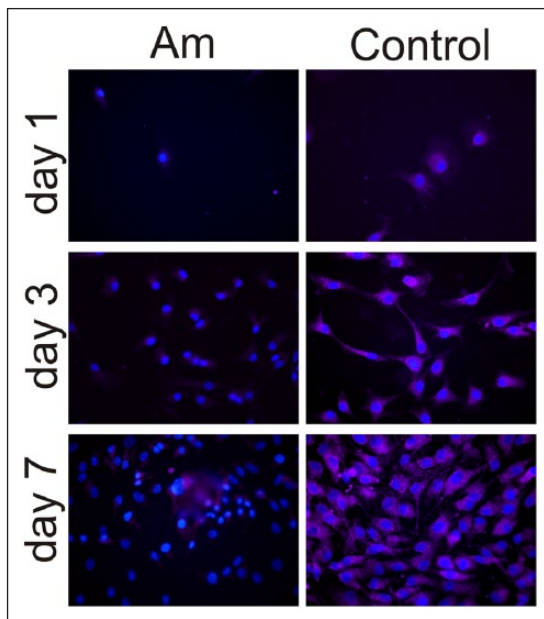


Figure 8. Immunofluorescence for the α_2 integrin after different culture times (1, 3 and 7 days) on both PLLA and the control substrate. Nuclei were counterstained with DAPI.

collagen type I on the control substrate. $\alpha_1\beta_1$ and $\alpha_2\beta_1$ integrins are the major collagen-binding integrins, with $\alpha_1\beta_1$ having a higher affinity for the basement membrane

collagen type IV and $\alpha_2\beta_1$ having a higher affinity for the fibrillar collagen type I.^{47–49}

The biological activity of a substrate depends strongly on the ECM protein that covers its surface before cell interaction. Figure 7 sketches a model for chondrocyte adhesion on PLLA as compared with the control substrate (that accounts for surfaces on which chondrocyte dedifferentiation takes place quickly after cell seeding). Chondrocytes seeded on PLLA interact with FN previously adsorbed on the material substrate (from FBS in the medium) through $\alpha_5\beta_1$ integrins (Figures 5 and 6), which leads to cell expansion while maintaining good levels of collagen type II and slow increase in collagen type I production (Figures 2 and 3). After 7 days of culture on PLLA, cell confluence is reached and subsequent proliferation leads to the formation of several cell layers on the material surface. At this point, expression of collagen type I is enhanced (Figure 2) and chondrocytes express receptors for this ECM component, that is, the $\alpha_2\beta_1$ integrin turns out to be the main adhesion receptor (Figure 8), which further promotes loss of the characteristic chondrocytic phenotype. On the other hand, when chondrocytes are cultured on the control substrate, FN must be adsorbed in such a conformation that does not enhance $\alpha_5\beta_1$ expression at the initial process of the cell–material interaction. Instead, cells start producing collagen type I after a few hours of culture (Figure 2), that immediately turns out to be the

main component of the ECM (Figure 2) deposited on the control substrate. Accordingly, cells develop the receptors for collagen type I, the $\alpha_2\beta_1$ integrin that further increases the production of the new matrix and the loss of characteristic markers.

Conclusion

Chondrocyte expansion on PLLA allows the increase in initial cell population approximately six times with collagen type II and aggrecan as the main components of the ECM, which suggests that chondrocytes maintain their characteristic phenotype and proliferate at the same time. This remarkable finding is relevant in clinical applications to repair cartilage starting with the biopsy of a small non-bearing site in the joint, the enzymatic digestion of the ECM, isolation and expansion of chondrocytes before injection in the injured area of the tissue. Moreover, we show that the composition of the ECM during cell expansion, that is, chondrocyte phenotype, is related to the initial cell–material interaction. Chondrocytes seeded on PLLA express $\alpha_5\beta_1$ – the main integrin for fibronectin – while secreting aggrecan and collagen type II. Nevertheless, on the control substrate, expression of $\alpha_2\beta_1$ – the main receptor for collagen type I – is upregulated which further enhances the secretion of collagen type I and the loss of the chondrocytic phenotype during monolayer expansion.

Acknowledgements

The authors met Professor Adam Curtis many years ago through his papers on the effect of topography on cells. His work had a major influence on their understanding of cell/material interactions and the way our protocols, methodologies and research evolved. The reason why three of the co-authors of this manuscript moved from Valencia to Glasgow was partly the strong reference for Cell Engineering that he established at the University of Glasgow.


Declaration of conflicting interests

The author(s) declared no potential conflicts of interest with respect to the research, authorship and/or publication of this article.

Funding

The support received from the European Research Council (ERC 306990) and the UK EPSRC (EP/P001114/1) is acknowledged. J.L.G.R. acknowledges support of the Spanish Ministry of Economy and Competitiveness (MINECO) through the project MAT2016-76039-C4-1 (including the FEDER financial support). CIBER-BBN is an initiative funded by the VI National R&D&i Plan 2008–2011, Iniciativa Ingenio 2010, Consolider Programme, CIBER Actions and financed by the Instituto de Salud Carlos III with assistance from the European Regional Development Fund.

ORCID iD

Manuel Salmerón-Sánchez  <https://orcid.org/0000-0002-8112-2100>

References

- Hunziker EB. Articular cartilage repair: are the intrinsic biological constraints undermining the process insuperable? *Osteoarthr Cart* 2009; 7: 15–28.
- Buckwalter JA, Rosenberg LC and Hunziker EB. Articular cartilage: composition, structure, response to injury, and methods of facilitating repair. In: Ewing JW (ed.) *Articular cartilage and knee joint function: basic science and arthroscopy*. New York: Raven Press, 1990, pp. 19–56.
- Benya PD, Padilla SR and Nimmi ME. Independent regulation of collagen types by chondrocytes during the loss of differentiated function in culture. *Cell* 1978; 15: 1313–1321.
- Mayne R, Vail MS, Miller EJ, et al. Changes in type of collagen synthesized as clones of chick chondrocytes grow and eventually lose division capacity. *Proc Natl Acad Sci USA* 1976; 73: 1674–1678.
- Von Der Mark K, Gauss V, Von Der Mark H, et al. Relationship between cell shape and type of collagen synthesized as chondrocytes loses their cartilage phenotype in culture. *Nature* 1977; 267: 531–532.
- Darling EM and Athanasiou KA. Rapid phenotypic changes in passaged articular chondrocyte subpopulations. *J Orthop Res* 2005; 23: 425–432.
- Brodtkin KR, García AJ and Levetson ME. Chondrocyte phenotypes on different extracellular matrix monolayers. *Biomaterials* 2004; 25: 5929–5938.
- Martin I, Suetterlin R, Baschong W, et al. Enhanced cartilage tissue engineering by sequential exposure of chondrocytes to FGF-2 during 2D expansion and BMP-2 during 3D cultivation. *J Cell Biochem* 2001; 83: 121–128.
- Curtis A, Forrester J, McInnes C, et al. Adhesion of cells to polystyrene surfaces. *J Cell Biol*. 1983; 97: 1500–1506.
- Wyre RM and Downes S. The role of protein adsorption on chondrocyte adhesion to a heterocyclic methacrylate polymer system. *Biomaterials* 2002; 23: 357–364.
- Loty C, Forest N, Boulekbache H, et al. Behavior of fetal rat chondrocytes cultured on a bioactive glassceramic. *J Biomed Mater Res* 1997; 37: 137–149.
- Shakibaei MM, De Souza P and Merker HJ. Integrin expression and collagen type II implicated in maintenance of chondrocyte shape in monolayer culture: an immunomorphological study. *Cell Biol Int* 1997; 21: 115–125.
- Watt FM. Effect of seeding density on stability of the differentiated phenotype of pig articular chondrocytes in culture. *J Cell Sci* 1988; 89: 373–378.
- Kuettner KE, Memoli VA, Pauli BU, et al. Synthesis of cartilage matrix by mammalian chondrocytes in vitro. II. Maintenance of collagen and proteoglycan phenotype. *J Cell Biol* 1982; 93: 751–757.
- Schulze-Tanzil G, De Souza P, Villegas Castrejon H, et al. Redifferentiation of dedifferentiated human chondrocytes in high-density cultures. *Cell Tissue Res* 2002; 308: 371–379.
- Woodfield TBF, Miot S, Martin I, et al. The regulation of expanded human nasal chondrocyte re-differentiation

- capacity by substrate composition and gas plasma surface modification. *Biomaterials* 2006; 27: 1043–1053.
17. Mallein-Gerin F, Garrone R and van der Rest M. Proteoglycan and collagen synthesis are correlated with actin organization in dedifferentiating chondrocytes. *Eur J Cell Biol* 1991; 54: 364–373.
 18. Benya PD, Brown PD and Padilla SR. Microfilament modification by dihydrocytochalasin B causes retinoic acid-modulated chondrocytes to reexpress the differentiated collagen phenotype without a change in shape. *J Cell Biol* 1988; 106: 161–170.
 19. Brown BD and Benya PD. Alterations in chondrocyte cytoskeletal architecture during phenotypic modulation by retinoic acid and dihydrocytochalasin B-induced reexpression. *J Cell Biol* 1988; 106: 171–179.
 20. Costa Martinez E, Rodríguez Hernández JC, Machado M, et al. Human chondrocyte morphology, its dedifferentiation and fibronectin conformation on different PLLA microtopographies. *Tiss Eng Part A* 2008; 14: 1751–1762.
 21. Hernandez Sánchez F, Molina Mateo J, Romero Colomer FJ, et al. Influence of low-temperature nucleation on the crystallization process of poly(L-lactide). *Biomacromolecules* 2005; 6: 3283–3290.
 22. Zhang T, Gong T, Xie J, et al. Softening substrates promote chondrocytes phenotype via RhoA/ROCK pathway. *ACS Appl Mater Inter* 2016; 8: 22884–22891.
 23. Schuh E, Hofmann S, Stok KS, et al. The influence of matrix elasticity on chondrocyte behavior in 3D. *J Tissue Eng Regen Med.* 2012; 6: e3142.
 24. Parreno J, Bianchi VJ, Sermer C, et al. Adherent agarose mold cultures: an in vitro platform for multi-factorial assessment of passaged chondrocyte redifferentiation. *J Orthop Res.* Epub ahead of print 25 March 2018. DOI: 10.1002/jor.23896.
 25. Mao Y, Hoffman T, Wu A, et al. An innovative laboratory procedure to expand chondrocytes with reduced dedifferentiation. *Cartilage* 2018; 9: 202–211.
 26. Shao X, Lin S, Peng Q, et al. Tetrahedral DNA nanostructure: a potential promoter for cartilage tissue regeneration via regulating chondrocyte phenotype and proliferation. *Small.* Epub ahead of print 23 January 2017. DOI: 10.1002/smll.201602770.
 27. Li S, Wang X, Cao B, et al. Effects of nanoscale spatial arrangement of arginine-glycine-aspartate peptides on dedifferentiation of chondrocytes. *Nano Lett* 2015; 15: 7755–7765.
 28. Rosenzweig DH, Matmati M, Khayat G, et al. Culture of primary bovine chondrocytes on a continuously expanding surface inhibits dedifferentiation. *Tissue Eng Part A* 2012; 18: 2466–2476.
 29. Hoshiba T1, Yamada T, Lu H, et al. Maintenance of cartilaginous gene expression on extracellular matrix derived from serially passaged chondrocytes during in vitro chondrocyte expansion. *J Biomed Mater Res A* 2012; 100: 694–702.
 30. Spie J. Tissue engineering and reparative medicine. *Ann NY Acad Sci* 2002; 961: 1–3.
 31. Griffin L and Naughton G. Tissue engineering – current challenges and expanding opportunities. *Science* 2002; 295: 1009–1014.
 32. Grinnell F. Focal adhesion sites and the removal of substrate-bound fibronectin. *J Cell Biol* 1986; 103: 2697–2706.
 33. Altankov G and Groth Th. Reorganization of substrate-bound fibronectin on hydrophilic and hydrophobic materials is related to biocompatibility. *J Mater Sci Mat Med* 1994; 5: 732–737.
 34. Altankov G and Groth Th. Fibronectin matrix formation and the biocompatibility of materials. *J Mater Sci Mat Med.* 1996; 7: 425–429.
 35. Werner C, Pompe T and Salchert K. Modulating extracellular matrices at interfaces of polymeric materials. *Adv Polym Sci* 2006; 203: 63–93.
 36. Baugh L and Vogel V. Structural changes of fibronectin adsorbed to model surfaces probed by fluorescence resonance energy transfer. *J Biomed Mater Res* 2004; 69A: 525–534.
 37. González-García C, Sousa SR, Moratal D, et al. Effect of nanoscale topography on fibronectin adsorption, focal adhesion size and matrix organisation. *Colloids Surf B Biointerfaces* 2010; 77: 181–190.
 38. García AJ, Vega MD and Boettiger D. Modulation of cell proliferation and differentiation through substrate dependent changes in fibronectin conformation. *Mol Biol Cell* 1999; 10: 785–798.
 39. Bergkvist M, Carlsson J and Oscarsson S. Surface dependent conformations of human plasma fibronectin adsorbed to silica, mica and hydrophobic surfaces, studied with use of atomic force microscopy. *J Biomed Mater Res* 2003; 64A: 349–356.
 40. Erickson HP and Carrell NA. Fibronectin in extended and compact conformations: electron microscopy and sedimentation analysis. *J Biol Chem* 1983; 258: 14539–14544.
 41. Johnson KJ, Sage H, Briscoe G, et al. The compact conformation of fibronectin is determined by intramolecular ionic interactions. *J Biol Chem* 1999; 274: 15473–15479.
 42. Gugutkov D, Cristina González-García C, Rodríguez Hernández JC, et al. Biological activity of the substrate-induced fibronectin network: insight into the third dimension through electrospun fibers. *Langmuir* 2009; 25: 10893–10900.
 43. Garcíadiago-Cázares D, Rosales C, Katoh M, et al. Coordination of chondrocyte differentiation and joint formation by $\alpha 5\beta 1$ integrin in the developing appendicular skeleton. *Development* 2004; 131: 4735–4742.
 44. Kurtis MS and Tannin A. Integrin-mediated adhesion of human articular chondrocytes to cartilage. *Arthr Rheum* 2003; 48: 110–118.
 45. Enomoto -Iwamoto M, Iwamoto M, Nakashima K, et al. Involvement of $\alpha 5\beta 1$ integrin in matrix interactions and proliferation of chondrocytes. *J Bone Miner Res* 1997; 12: 1124–1132.
 46. Millward -Sadler SJ and Salter DM. Integrin-dependent signal cascades in chondrocyte mechanotransduction. *Ann Biomed Eng* 2004; 32: 435–446.
 47. Kapyla J, Ivaska J, Riikonen R, et al. Integrin $\alpha(2)\text{I}$ domain recognizes type I and type IV collagens by different mechanisms. *J Biol Chem* 2000; 275: 3348–3354.
 48. Nykvist P, Tu H, Ivaska J, et al. Distinct recognition of collagen subtypes by $\alpha(1)\beta(1)$ and $\alpha(2)\beta(1)$ integrins: $\alpha(1)\beta(1)$ mediates cell adhesion to type XIII collagen. *J Biol Chem* 2000; 275: 8255–8261.
 49. Tulla M, Pentikainen OT, Viitasalo T, et al. Selective binding of collagen subtypes by integrin αII , α2I , and α10I domains. *J Biol Chem.* 2001; 276: 48206–48212.