





Article

Taguchi Grey Relational Analysis for Multi-Response Optimization of *Bacillus* Bacteria Flocculation Recovery from Fermented Broth by Chitosan to Enhance Biocontrol Efficiency

Selena Dmitrović¹, Ivana Pajčin^{1,*}, Nataša Lukić¹, Vanja Vlajkov¹, Mila Grahovac², Jovana Grahovac^{1,*} and Aleksandar Jokić¹

¹ Faculty of Technology Novi Sad, University of Novi Sad, Bulevar cara Lazara 1, 21000 Novi Sad, Serbia

² Faculty of Agriculture, University of Novi Sad, Trg Dositeja Obradovića 8, 21000 Novi Sad, Serbia

* Correspondence: ivana.pajcin@uns.ac.rs (I.P.); johana@uns.ac.rs (J.G.)

Abstract: Degradation of environment is a challenge to crop production around the world. Biological control of various plant diseases using antagonistic bacteria is an encouraging alternative to traditionally used chemical control strategies. Chitosan as a well-known natural flocculation agent also exhibits antimicrobial activity. The goal of this study was to investigate a dual nature of chitosan in flocculation of *Bacillus* sp. BioSol021 cultivation broth intended for biocontrol applications. Experiments were performed based on L₁₈ standard Taguchi orthogonal array design with five input parameters (chitosan type and dosage, pH value, rapid and slow mixing rates). In this study, the grey relational analysis was used to perform multi-objective optimization of the chosen responses, i.e., flocculation efficiency and four inhibition zone diameters against the selected phytopathogens. The results have indicated a great potential of a highly efficient method for removal of the *Bacillus* bacteria from the cultivation broth using chitosan. The good flocculation efficiency and high precipitate antimicrobial activity against the selected phytopathogens were achieved. It has been shown that multiple flocculation performance parameters were improved, resulting in slightly improved response values.

Keywords: chitosan; flocculation; *Bacillus* sp.; biocontrol; grey relational analysis; Taguchi method



Citation: Dmitrović, S.; Pajčin, I.; Lukić, N.; Vlajkov, V.; Grahovac, M.; Grahovac, J.; Jokić, A. Taguchi Grey Relational Analysis for Multi-Response Optimization of *Bacillus* Bacteria Flocculation Recovery from Fermented Broth by Chitosan to Enhance Biocontrol Efficiency.

Polymers **2022**, *14*, 3282.

<https://doi.org/10.3390/polym14163282>

polym14163282

Academic Editor: Min-Lang Tsai

Received: 27 July 2022

Accepted: 9 August 2022

Published: 12 August 2022

Publisher's Note: MDPI stays neutral with regard to jurisdictional claims in published maps and institutional affiliations.



Copyright: © 2022 by the authors. Licensee MDPI, Basel, Switzerland. This article is an open access article distributed under the terms and conditions of the Creative Commons Attribution (CC BY) license (<https://creativecommons.org/licenses/by/4.0/>).

1. Introduction

Plant diseases, caused by pathogenic bacteria and fungi, can lead to a reduction in plant growth or even death which leads to huge economic losses, as well as food safety issues [1]. The use of chemical fungicides and bactericides for management of plant pathogens results in environmental and health problems. That is the reason why the usage of biological control agents has been increasingly investigated [2–4]. Today, development of new methods to combat plant pathogens is imperative while the application of biopesticides could generate a critical change for the ecological and economical sustainability of the current food production and security [1].

According to a number of reports, bacteria from the *Bacillus* genus express several mechanisms making them suitable candidates to be applied as biological control agents of different plant pathogens [5,6]. Majority of bacteria of the genus *Bacillus* are Gram-positive, aerobic, endospore-forming and rod-shaped bacteria, which are found in diverse environments [5–7]. Among various bacterial antagonists reported, *Bacillus* spp. such as *B. amyloliquefaciens*, *B. cereus*, *B. licheniformis*, *B. subtilis* and *B. velezensis* have been used for effective control of the diseases by producing a variety of biologically active compounds such as lipopeptides, antibiotics, volatile organic compounds and enzymes with a broad spectrum of activities toward phytopathogens [8,9]. *Bacillus* cells are capable of forming dormant spores (endospores) that are resistant to extreme conditions and thus can be easily formulated and stored [10].

The raising interest of scientific public and agricultural sector for development of biological solutions for plant protection is a consequence of a potential threat arising from overuse of synthetic chemical pesticides, as well as the lack of efficient chemical bactericides [11]. On the other hand, many examples of highly efficient biocontrol agents could be found in the literature, whose commercialization and real-life application hasn't happened, mostly due to high market price. The main setback to wider biopesticides application is their higher price compared to chemical alternatives, hence biocontrol agents' production technology should be techno-economically viable, with positive effects to environment preservation, competitiveness increase in agricultural sector, and consequently to food safety. In addition to a high investment cost for the equipment necessary for biotechnological part of the biopesticide production process, downstream processing cost make up to 60% of the overall production cost, while the formulation step is usually a bottleneck for successful commercialization of biocontrol agents [12]. Therefore, considerable attention has been devoted to develop simple, efficient and economical methods for biocontrol agents harvesting or separation, and different methods, such as centrifugation, coagulation, filtration and flocculation, have been used [13].

Flocculation is a process in which particles are destabilized and induced to come together, make contact and subsequently form large agglomerates. Before flocculation, the colloidal dispersion must be destabilized and coagulation must occur, so that the particles cannot be redispersed before separation [14]. Flocculation is a widely used technique in many industries, including water/wastewater treatment, pulp and paper industry, production of pharmaceuticals, mineral processing, and many more branches of the food industry [15]. Flocculating agents can be classified into three groups: organic polymeric bioflocculants (poly-acrylamide derivatives and poly-acrylic acid), inorganic flocculants (aluminum-sulfate and polyaluminum chloride) and bioflocculants (microbial polysaccharides, glycoproteins, proteins, lipids, nucleic acids, nucleoproteins) [16,17]. Synthetic flocculants, either organic or inorganic, have been used in industrial fields due to low production costs and high efficiency; however, their use can cause adverse impacts on environment and health [18]. Natural flocculants are mainly based on chitosan, starch, cellulose, tannins and microbial raw materials. They can be divided into three categories based on overall electrical charge character: cationic flocculants, anionic flocculants and non-ionic flocculants, depending on the nature of functional groups constituting their chemical structure [19]. Chitosan attracts negatively charged bacterial cells because it is positively charged in acidic environments [20,21]. These ions may reduce bacterial electronegativity and promote sedimentation by adsorbing polymer chains [22]. Several factors may contribute to the antimicrobial activity of chitosan—three models have been suggested so far. The first model has considered the interaction between the positively charged chitosan and negatively charged microbial cells. The interaction is intermediated by the electrostatic forces between the protonated NH_3^+ groups and the negative residues [23], seemingly by competing with Ca^{2+} for electronegative sites on the membrane surface [24]. The second proposed mechanism is binding of chitosan with microbial DNA, which leads to the inhibition of the mRNA and protein synthesis via the penetration of chitosan into the nuclei of the microorganisms [25,26]. The third mechanism is the chelation of metals, suppression of spore elements and binding to essential nutrients for microbial growth [27]. Overall, such mechanism is more efficient at higher pH values, where positive ions are bounded to chitosan, since the amine groups are unprotonated and the electron pair on the amine nitrogen is available for donation to metal ions [28].

Chitin and chitosan have been investigated as biopolymers with antimicrobial activity against a wide range of target organisms such as algae, bacteria, yeasts and fungi [29]. Chitosan is a biopolymer obtained from chitin, found in the exoskeleton of crabs and insects and widely distributed in the nature. In recent years, much attention has been paid to chitosan. The reasons for that are probably its biocompatibility, biodegradability, non-toxicity and some specific properties such as the role in biofilm formation, chelation and adsorption, as well as antimicrobial activity [30]. There are many factors that affect

the antimicrobial activity of chitosan, including: type of test microorganism, the molecular weight of chitosan (Mw), the degree of deacetylation (DD) of the biopolymer chain, chitosan concentration, pH value, chitosan source, temperature, cell growth phase etc. [31]. Microorganisms could be divided into three groups: Gram-positive bacteria, Gram-negative bacteria and fungi [32]. According to some of the research results, chitosan has shown a more pronounced bactericidal effect against the Gram-positive bacteria (e.g., *Listeria monocytogenes*, *B. megaterium*, *B. cereus*, *Staphylococcus aureus*, *Lactobacillus plantarum*, *L. brevis*, *L. bulgaris*, etc.) than against the Gram-negative bacteria (e.g., *Escherichia coli*, *Pseudomonas fluorescens*, *Salmonella typhimurium*, *Vibrio parahaemolyticus*, etc.) [33], while some other research results suggest otherwise [31]. The opinions also differ as to whether chitosan had a stronger antimicrobial effect against bacteria or fungi [31,33–36]. Studies carried out using *B. cereus*, *E. coli*, *S. aureus*, *B. subtilis* and *L. monocytogenes* have proved that for the lower chitosan molecular weight (Mw) the greater was the observed effect on the reduction of the test microorganism's growth and multiplication [29]. The higher deacetylation degree (DD) of chitosan leads to its higher antibacterial activity [37]. The antibacterial activity of chitosan largely depends on the pH value, not only because chitosan is soluble only in an acidic medium, but also because chitosan molecules become polycationic at pH < 6.5 [38]. The antibacterial activity decreases with the increase of pH value and it is completely lost at pH 7.0, probably due to the fact that amino groups of chitosan are no longer charged, and chitosan is poorly soluble in water at pH 7.0 [25,39]. Recently, some studies have shown that chitosan can be produced from fungi [40]. Temperature has a significant effect on the antibacterial activity of chitosan, as well as on its viscosity and Mw [39]. Chitosan shows enhanced bactericidal activity with increasing temperature ranging from 4 °C to 37 °C [23]. In general, the chitosan solution before storage has higher antibacterial activity than the chitosan solution stored for 15 weeks [41]. Similar to bacteria, the chitosan activity against fungi is assumed to be fungistatic, and generally chitosan has been reported as very effective in inhibiting spore germination, germ tube elongation and radial growth inhibition [42,43]. The antifungal mechanism of chitosan involves interference with cell wall morphogenesis, resulting in chitosan molecules direct interference with fungal growth [42]. Chitosan oligomers diffuse inside hyphae interfering the enzymes activity responsible for fungal growth [44]. The intensity of chitosan activity when it comes to degradation of fungal cell walls depends on its concentration, DD and pH value. Studies conducted using cultures of *Rhizoctonia solani* and *Sclerotium rolfsii* on nutrient agar revealed that the percentage of fungal growth decreased with increase of the chitosan concentration in the medium. As the inhibition process takes place, the medium shifted towards alkalinity which decreases the chitosan effectiveness [45]. In addition to its antimicrobial activity, chitosan application in agriculture is based on its additional beneficial traits including cationic nature, biodegradability, non-toxicity and adsorption properties [46]. Chitosan could be used as a carrier for active components of biopesticides and (bio)fertilizers, also contributing to prevention of fertilizer losses [47]. It could be as well applied as seed coating agent, plant immunity elicitor and soil amendment [48], resulting in improved plant physiological state and longer post-harvest shelf life of agricultural products. Chitosan effect on plant immunity and resistance induction against the pathogens is of utmost importance, considering that chitosan contributes to activation of plant defense signaling pathways [47] inducing both local and systemic plant defense responses. Furthermore, chitosan provides better water availability for plants, as well as increased plant tolerance to drought, salinity and high temperature [49], thus contributing to management of plant abiotic stress [46]. All of the aforementioned reasons support application of chitosan as both flocculation agent, used for downstream separation of bacterial antagonists as potential biocontrol agents, and a formulation agent with several beneficial traits for the final biocontrol product intended for application in agricultural practice. In most cases, chitosan-based formulations of bio-products for agriculture could be applied as solid formulations (soil amendment) or after resuspending in water (seed coating, foliar spraying and post-harvest fruit and vegetable coating agents) [50].

Most of the studies mentioned above have been focusing on predicting the optimal processing parameters aimed at chitosan flocculation efficiency or its antimicrobial activity. Previous research has confirmed antifungal activity of the producing microorganism *Bacillus* sp. strain BioSol021 against phytopathogenic and mycotoxigenic fungi *Aspergillus flavus* [51]. Toxigenic *Aspergillus* species are contaminants of agricultural commodities including three leading agricultural crops: wheat, rice, and maize. Therefore, these species pose a burden to food and feed safety, international trade and human and animal health [52]. However, wide spectrum of antimicrobial activity is a highly desirable trait of biocontrol agents or biopesticides in agricultural practice. Hence this study has investigated a possible spectrum of antimicrobial activity of the biocontrol agent based on *Bacillus* sp. strain BioSol021 using test microorganisms from the genera *Fusarium*, *Colletotrichum*, and *Xanthomonas* as representative fungal and bacterial phytopathogens, besides the fungi *Aspergillus flavus*. The genus *Fusarium* comprises of fungal species causing different types of plant diseases, including head blight, vascular wilt, canker, root rot, infecting over 100 economically important crops and presenting a threaten to food chain safety considering their ability to produce mycotoxins [53]. Fungal pathogens from the genus *Colletotrichum* represent a major threat to fruit, cereals, leguminous and other crops and this genus is ranked among the top 10 fungal pathogens according to State of the World's Plants 2016 [54]. *Xanthomonas* is a well-known genus of bacterial plant pathogens infecting mostly economically important vegetable crops [55]. Plant disease severity followed by crop losses could be up to 100%, with additional problem of fast resistance development by bacterial phytopathogens to most of the commercially applied bactericides [56,57]. Suppression and management of bacterial plant diseases is a major challenge in agricultural practice. The lack of efficiency when it comes to copper-based bactericides, the forbidden usage of antibiotics in agriculture in majority of the countries worldwide and the rising emergence of pesticide-resistant bacterial phytopathogenic strains have resulted in necessity to develop safe and highly efficient bactericides which could be successfully commercialized and available to agricultural community [58]. One of the examples pointing out the necessity to develop novel bactericides is the fact that there are no products in the category of biobactericides registered and allowed to use in organic agriculture in the Republic of Serbia [59]. The published data regarding the bioprocess development when it comes to biopesticides production are mostly lab-scale data with low application potential and techno-economic viability. Therefore, the aim of this study was to investigate the novel downstream procedure for biocontrol agents' production based on dual chitosan influence on both *Bacillus* sp. BioSol021 broth flocculation, as well as the antimicrobial activity of the bacteria/chitosan mixtures, i.e., precipitate, against the wider spectra of fungal and bacterial plant pathogens. The effects of the chitosan type and dosage, pH, rapid and slow mixing rates during flocculation were investigated to define the optimal conditions for the flocculation procedure. L₁₈ Taguchi orthogonal array was selected as a practical way for outlining the best combination of different variables in such phenomenon requiring an excessive number of experiments. A multi-response grey relational analysis (GRA) was employed to identify parameters that simultaneously affect reaching the optimized efficiency of the flocculation and the antimicrobial activity of the final flocculation product.

2. Materials and Methods

2.1. Microorganisms

Production microorganism used in this study was *Bacillus* sp. strain BioSol021, isolated from the rhizosphere of common bean or kidney bean (*Phaseolus vulgaris*) and identified using 16S rRNA gene sequencing (GenBank sequence accession number ON569805). Genomic DNA was isolated using a commercial kit (PureLink Genomic DNA kit, Thermo Fisher Scientific, Waltham, MA, USA). Isolated genomic DNA was used as a template to amplify the sequence of 16S rRNA gene using the universal pair of primers 27f (5'-AGAGTTTGATCCTGGCTCAG-3') and 1492r (5'-GGTACCTTGTTACGACTT-3'). The

PCR (polymerase chain reaction) method was performed using PCR device (Surecycler 8800 Thermocycler, Agilent Technologies, Santa Clara, CA, USA) and the following composition of PCR mixture with a total volume of 50 μ L: 2 μ L genomic DNA, 1 μ L forward primer, 1 μ L reverse primer, 25 μ L Master mix (AmpliTaq Gold™ 360 Master Mix—Thermo Fisher Scientific, Waltham, MA, USA), 21 μ L of water (UltraPure Ultra DNase/RNase-Free Distilled Water, Invitrogen, Waltham, MA, USA). Amplified DNA fragments were sequenced in both directions (Macrogen Europe, Amsterdam, The Netherlands) using the same primers used in the amplification phase. The chromatograms obtained were visualized using FinchTV 1.4.0 software (Geospiza, Inc., Seattle, Washington, DC, USA). Sequences (forward and reverse) were then processed using the MEGA 7 software package (Molecular Evolutionary Genetics Analysis, Penn State University, State College, PA, USA) [60], and a consensus sequence with a total length of 1416 bp was obtained. Using the BLAST program (Basic Local Alignment Search Tool, BLAST; <http://blast.ncbi.nlm.nih.gov/Blast.cgi> (accessed on 5 March 2022)) the obtained sequence was compared with the deposited sequences available in the database (<http://www.ncbi.nlm.nih.gov/genbank> (accessed on 5 March 2022)). Phylogenetic analysis was performed using the obtained sequence of the production microorganism and 16S rRNA region of related *Bacillus* strains using MEGA 7 software [61]. During the construction of the phylogenetic tree, the maximum likelihood method with bootstrap analysis in 1000 replicates was used. In addition, the 16S rRNA gene sequence of *Streptomyces albidoflavus* as an outgroup microorganism was used to construct the phylogenetic tree. Biochemical analysis of the producing microorganism's metabolic activity was performed using the VITEK 2 compact system and VITEK BCL test kit (bioMérieux, Marcy-l'Étoile, France).

Test microorganisms or phytopathogens were bacteria *Xanthomonas* sp., isolated from diseased pepper plants with symptoms of bacterial spot, fungi *Colletotrichum* sp. and *Fusarium* sp., isolated from apples with rot symptoms, and *Aspergillus* sp. with proven aflatoxigenic potential isolated from maize [52]. All pathogens were identified according to pathogenic, morphological and ecological characteristics. The phytopathogenic *Xanthomonas* isolate identification was confirmed by the PCR (polymerase chain reaction) method using the species-specific primers (XeF and XeR) [62]. Appearance of 208 bp-fragments during observation by UV transilluminator was considered as a positive reaction for identification of the pathogen as member of the *X. euvesicatoria* species [63]. The identification of *Colletotrichum* sp. was confirmed by the PCR method, using species-specific primers for *C. acutatum* CaInt2, in combination with the conserved primer ITS4, according to the protocol described by Screenivasaprasad et al. [64]. The occurrence of amplicon about 490 bp in size was considered a positive reaction for *C. acutatum* identification [65]. The identification of *Fusarium* sp. was confirmed by the PCR method using the species-specific primer pair FA-ITSF and FA-ITSR [66,67] and the amplified fragments were of the expected size (272 bp) for *F. avenaceum* [68]. *Aspergillus* section *Flavi* strain was identified to the species level based on macroscopic and microscopic morphological characteristics and marked as *A. flavus* strain SA2BSS [52]. All microorganisms used in this study are preserved in the Laboratory for Biochemical Engineering of the Faculty of Technology Novi Sad, University of Novi Sad.

Fungal test microorganisms (*Aspergillus* sp., *Colletotrichum* sp., *Fusarium* sp.) were kept on a semi-solid semisynthetic nutrient medium SMA (Sabouraud maltose agar), obtained by combining SMB (Sabouraud maltose broth, HiMedia Laboratories, Thane West, Maharashtra, India) and 2% (*w/v*) agar (HiMedia Laboratories, Thane West, Maharashtra, India); *Xanthomonas* sp. was kept on a semi-solid semisynthetic medium YMA (yeast maltose agar), containing (g/L) glucose (15), peptone (3), yeast extract (3), malt extract (1) and agar (20). All microorganisms were stored at 4 °C. In order to stimulate their metabolic activity and ability to reproduce, test microorganisms were refreshed by applying the same nutrient media that were used for their storage under the following conditions: *Xanthomonas* sp. at 26 °C for 48 h, while phytopathogenic fungi were refreshed at 26 °C for 120 h.

2.2. Inoculum Preparation and Cultivation Parameters

Production microorganism (*Bacillus* sp. strain BioSol021) was kept on a semi-solid commercial medium nutrient agar (HiMedia Laboratories, Thane West, Maharashtra, India). Preparation of the inoculum of *Bacillus* sp. strain BioSol021 was performed by seeding the liquid commercial medium, nutrient broth (HiMedia Laboratories, Thane West, Maharashtra, India), with previously refreshed microorganisms (28 °C for 48 h on nutrient agar) and by cultivation for 48 h at 28 °C, with stirring on a laboratory shaker (150 rpm) and spontaneous aeration. Cultivation of *Bacillus* sp. strain BioSol021 lasted 96 h at 28 °C in a 16 L-laboratory bioreactor (EDF – 15.4_1, A/S Biotekniskais centre, Riga, Latvia), with stirring rate of 100 rpm using the three impeller-Rushton turbine and aeration rate of 1.5 vvm (volume of sterile air/(volume of the medium·min)) [69]. Cultivation medium contained (g/L) cellulose (5.0), (NH₄)₂SO₄ (3.8), K₂HPO₄ (0.3) and MgSO₄·7H₂O (0.3). Initial pH value of the cultivation medium was set to 6.0 prior to sterilization by autoclaving. Cell number at the end of cultivation was determined by counting the colony-forming units [70]. The carbon and nitrogen source content at the end of the cultivation were determined using the methods described by [71] and [72]. The produced cultivation broth of the producing strain *Bacillus* sp. BioSol021 was further used for investigation of different flocculation efficiency parameters.

2.3. Antimicrobial Activity

After the flocculation tests, antimicrobial activity of the precipitate against the selected phytopathogens was examined in vitro using the well diffusion method (fungal test microorganisms) and the diffusion-disc method (bacterial test microorganism).

2.3.1. Well-Diffusion Assay

Antifungal activity of *Bacillus* sp. BioSol021-chitosan precipitate was tested using the well diffusion technique. In 90 mm Petri plates, a layer of mixture of the SMA medium (15 mL) and fungal pathogen suspension (1 mL–10⁵ CFU/mL), homogenized using the vortex mixer, was spread. After the medium solidification, three wells per plate with a diameter of 10 mm were made. In each well 100 µL of the flocculated sample was added. The assessment of antagonistic activity was carried out after 96 h of incubation at 26 °C by measuring the inhibition zone diameters (mm) [68].

2.3.2. Disk-Diffusion Assay

Antibacterial activity of *Bacillus* sp. BioSol021-chitosan precipitate was tested using the diffusion-disc method. In 90 mm Petri plates, a layer of mixture of the YMA medium (15 mL) and bacterial pathogen suspension (1 mL–10⁸ CFU/mL), homogenized using the vortex mixer, was spread. After solidification, three disks per plate with a diameter of 6 mm were applied firmly on the medium surface. On each disk, 10 µL of the flocculated sample was added. The assessment of antagonistic activity was performed after 48 h of incubation at 28 °C by measuring the inhibition zone diameters (mm) [72].

2.4. Flocculation Experiments

The jar tests were applied to determine the optimal experimental conditions in terms of the selected flocculation process variables. Table 1 summarizes the experimental factors and their levels.

Table 1. The experimental factors and their levels during the flocculation of the *Bacillus* sp. BioSol021 cultivation broth.

Parameter	Notation	Levels		
		1	2	3
Chitosan type	A	ch1	ch 2	ch 3
pH value	B	5	6	7
Chitosan dosage [mg/mL]	C	45	55	65
Rapid mixing [rpm]	D	250	350	450
Slow mixing [rpm]	E	50	100	150

Ch-chitosan; ch 1: $\geq 75\%$ deacetylated, 100,000–300,000 Da; ch 2: $\geq 75\%$ deacetylated, 310,000–375,000 Da and ch 3: $\geq 90\%$ deacetylated, 600,000–800,000 Da.

Different types of chitosan were provided by Sigma-Aldrich (St. Louis, MO, USA) (ch 1: obtained from shrimp shells, $\geq 75\%$ deacetylated; molecular mass 100,000–300,000 Da; ch 2: $\geq 75\%$ deacetylated, molecular mass 310,000–375,000 Da) and Acros-Organic (Geel, Belgium) (ch 3: $\geq 90\%$ deacetylated, molecular mass 600,000–800,000 Da). Chitosan solutions were prepared by mixing 100 mg (dry weight) of different chitosan types with 100 mL of 0.1 M HCl solution with continuous stirring by the magnetic stirrer (25 °C, 100 rpm). Stirring was carried out until chitosan was completely dissolved in the solution. Only freshly prepared solutions (stored at 4 °C for less than 24 h) were used in all flocculation experiments.

The experiments were performed using 250 mL of the *Bacillus* sp. BioSol021 cultivation broth, obtained after the 96 h-bioreactor cultivation, in a 400 mL-beaker, in which the appropriate amount of the flocculant was added, according to the experimental plan given in Table 1. pH value was adjusted using 0.1 M HCl/0.1 M NaOH. The sample beaker was placed on a magnetic stirrer, first for 5 min of rapid mixing to disperse the flocculant and then the speed was reduced to slow mixing speed for 30 min to enhance particle collisions. The settling time was 30 min. All flocculation experiments were conducted at the same temperature (25 °C).

The flocculation efficiency was calculated by the spectrophotometric measurements of the microbial suspension optical density (absorbance at 600 nm, UV 1800, Shimadzu, Kyoto, Japan) prior and subsequent to flocculation experiments:

$$\%EF = \frac{OD_0 - OD}{OD_0} \times 100 \quad (1)$$

where OD_0 and OD are the optical densities of the samples taken before and after the flocculation, respectively.

2.5. Taguchi Method and Grey Relational Analysis (GRA)

Taguchi method represents a practical way for outlining the optimal combination of different factors, especially in a phenomenon such as flocculation that requires substantial number of experiments to investigate the factors' influences on the selected response. This approach helps to identify the influence of individual factors and establish valid relationship between the responses and the operational conditions [73,74]. The experimental design for five controllable variables (chitosan type, pH value, chitosan dosage, rapid and slow mixing rates) with three levels is organized by the Taguchi's L_{18} orthogonal array. In Taguchi orthogonal L_{18} design, only 18 runs were needed, substantially reducing the number of runs over a full factorial experimental design [75]. The Minitab software package (version 17.0, Minitab, State College, PA, USA) was used for statistical analyses. In this study, further processing procedure should find optimal controllable variables for multi objective function using the grey relational analysis (GRA). In this way, the complex multi-objective optimization is simplified into a relational grade as a single response. For this purpose, five responses were chosen, i.e., flocculation efficiency and four inhibition zone diameters as indicators of the antifungal and antibacterial activity against the selected phytopathogens.

3. Results and Discussion

3.1. Identification of The Producing Microorganism

Identification of the producing microorganism was performed using 16S rRNA gene sequencing and VITEK2 identification. In order to define the genetic similarity of the tested isolate with the reference strains available in the database, phylogenetic analysis was performed by generating a phylogenetic tree (Figure 1). The maximum likelihood method was used for the construction of the phylogenetic tree, as a common statistical approach for estimating unknown parameters of the probability model based on the Tamura-Nei model [76].

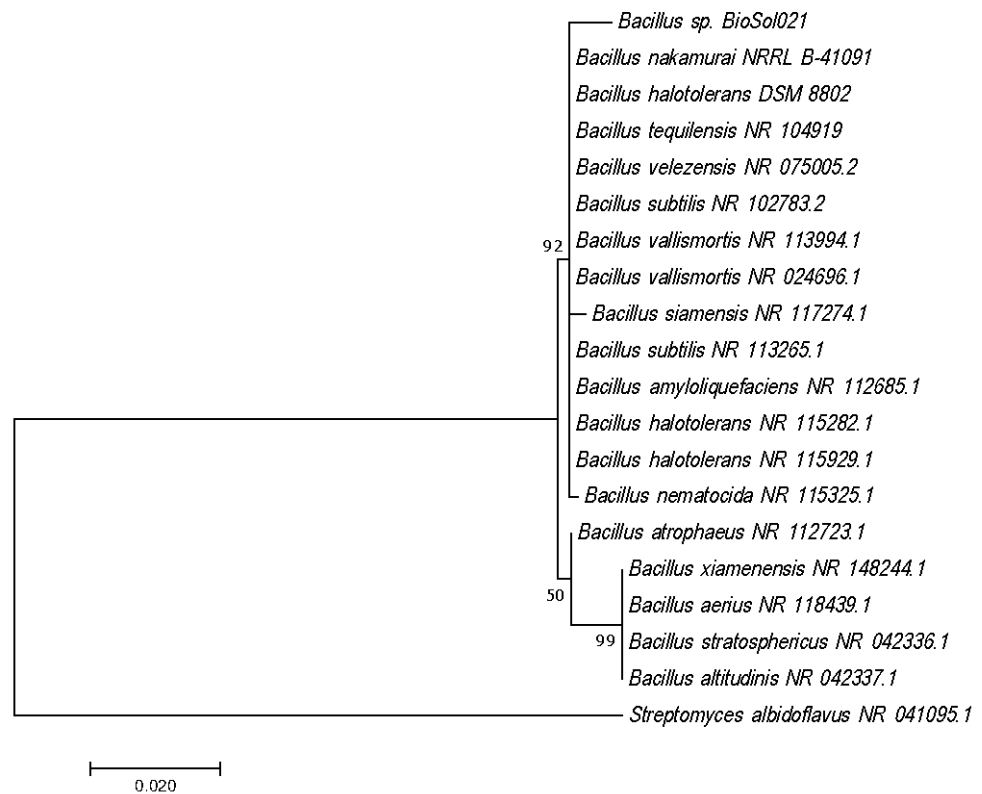


Figure 1. Molecular phylogenetic analysis of the *Bacillus* sp. strain BioSol021 16S rRNA gene sequence by the maximum likelihood method.

The phylogenetic tree given in Figure 1 and the results of VITEK2 biochemical tests given in Table 2 have confirmed that the producing microorganisms *Bacillus* sp. strain BioSol021 belongs to the operative group *B. amyloliquefaciens* (BLAST similarity 100%, VITEK2 confidence 96–99%—excellent identification).

Table 2. The results of the VITEK2 biochemical tests for the producing microorganism *Bacillus* sp. BioSol021.

Parameter	Value	Parameter	Value	Parameter	Value
β -xylosidase	+	Myo-inositol	+	Pyruvate	+
L-Lysine arylamidase	-	Methyl- α -D-glucopyranoside acidification	+	α -glucosidase	+
L-Aspartate arylamidase	-	Ellman	+	D-tagatose	-
Leucine arylamidase	+	Methyl-D-xyloside	-	D-trehalose	+
Phenylalanine arylamidase	+	α -mannosidase	-	Inulin	-
L-Proline arylamidase	-	Maltotriose	-	D-glucose	+
β -galactosidase	-	Glycine arylamidase	+	D-ribose	+
L-Pyrrolidonyl arylamidase	+	D-mannitol	+	Putrescine assimilation	-
α -galactosidase	+	D-mannose	+	Growth in 6.5% NaCl	+
Alanine arylamidase	+	D-melezitose	-	Kanamycin resistance	-
Tyrosine arylamidase	+	N-acetyl-D-glucosamine	-	Oleandomycin resistance	-
β -N-acetyl-glucosaminidase	-	Palatinose	+	Esculin hydrolysis	+
Ala-Phe-Pro arylamidase	-	L-rhamnose	-	Tetrazolium red	+
Cyclodextrin	-	β -glucosidase	+	Polymyxin B resistance	+
D-galactose	-	β -mannosidase	-		
Glycogen	-	Phosphoryl choline	-		

3.2. Taguchi Optimization of The Flocculation Process

Since *Bacillus* sp. BioSol021 cultivation broth produced in the 16 L-laboratory bioreactor was used as a biocontrol agent and initial mixture for the flocculation procedure, the composition of the cultivation broth was investigated at the end of the cultivation process to determine the main components and biomass content of the bacterial antagonist. The results are given in Table 3. As it could be seen, the cultivation broth contained 3.4 g/L of cellulose, while the total nitrogen content was 0.37 g/L. The biomass content of *Bacillus* sp. BioSol021 at the end of the cultivation and at the beginning of the flocculation was $2 \cdot 10^8$ CFU/mL, while the pH value was 7.51.

Table 3. Composition of the *Bacillus* sp. BioSol021s cultivation broth at the end of the cultivation and at the beginning of the flocculation.

Parameter	Value
Cellulose content (g/L)	3.4
Total nitrogen content (g/L)	0.37
Biomass content (CFU/mL)	$2 \cdot 10^8$
pH value	7.51

The actual flocculation efficiencies and the corresponding signal-to-noise (S/N) conversion of each run were determined for the proposed 18 experiments by the Taguchi method. Run 1 (boldfaced) had the maximum S/N ratio over the other experimental tests (Table 4). The parameter combination for this run was $A_1B_1C_1D_1E_1$ (chitosan ch1, pH 5, flocculant dose 45 mg/L, rapid mixing 250 rpm and slow mixing 50 rpm).

Table 4. Flocculation efficiency results using the Taguchi L₁₈ orthogonal array during the flocculation of the *Bacillus* sp. BioSol021 cultivation broth.

Run	Parameter Combination	EF (%)	S/N
1	A ₁ B ₁ C ₁ D ₁ E ₁	98.60	39.8776
2	A ₁ B ₂ C ₂ D ₂ E ₂	97.63	39.7918
3	A ₁ B ₃ C ₃ D ₃ E ₃	76.63	37.6883
4	A ₂ B ₁ C ₁ D ₂ E ₂	89.23	39.0104
5	A ₂ B ₂ C ₂ D ₃ E ₃	76.06	37.6230
6	A ₂ B ₃ C ₃ D ₁ E ₁	73.76	37.3566
7	A ₃ B ₁ C ₂ D ₁ E ₃	97.27	39.7598
8	A ₃ B ₂ C ₃ D ₂ E ₁	97.60	39.7886
9	A ₃ B ₃ C ₁ D ₃ E ₂	79.83	38.0431
10	A ₁ B ₁ C ₃ D ₃ E ₂	95.55	39.6045
11	A ₁ B ₂ C ₁ D ₁ E ₃	86.36	38.7263
12	A ₁ B ₃ C ₂ D ₂ E ₁	75.27	37.5323
13	A ₂ B ₁ C ₂ D ₃ E ₁	94.19	39.4797
14	A ₂ B ₂ C ₃ D ₁ E ₂	83.35	38.4176
15	A ₂ B ₃ C ₁ D ₂ E ₃	63.10	36.0008
16	A ₃ B ₁ C ₃ D ₂ E ₃	93.90	39.4531
17	A ₃ B ₂ C ₁ D ₃ E ₁	91.56	39.2346
18	A ₃ B ₃ C ₂ D ₁ E ₂	72.97	37.2631

A—chitosan type, B—pH value, C—chitosan dosage (mg/mL), D—rapid mixing speed (rpm), E—slow mixing speed (rpm), EF—flocculation efficiency (%), S/N—signal-to-noise ratio.

Table 5 shows the ANOVA (analysis of variance) results of the S/N ratios for the flocculation efficiency, i.e., the data presented in Table 4. The obtained *p*-values for the selected flocculation factors considering the S/N ratios have indicated that the pH value has had the greatest effect on the flocculation efficiency, followed by the chitosan type. Both of the factors were statistically significant at the significance level of 95%.

Table 5. Analysis of variance for the S/N ratios of flocculation efficiency during the flocculation of the *Bacillus* sp. BioSol021 cultivation broth.

Source	Degree of Freedom	Sum of Squares	Mean Square	F-Value	<i>p</i> -Value
A	2	3.3618	1.68088	7.72	0.017
B	2	15.7743	7.88714	36.24	0.000
C	2	0.1697	0.08483	0.39	0.691
D	2	0.0064	0.00318	0.01	0.986
E	2	1.4295	0.71477	3.28	0.099
Error	7	1.5234	0.21763		
Total	17	22.2650			

A—chitosan type, B—pH value, C—chitosan dosage (mg/mL), D—rapid mixing speed (rpm), E—slow mixing speed (rpm).

Figure 2 illustrates the main effects plot for the S/N of the flocculation efficiency. Solid lines connect each mean value within each selected factor, while the dashed reference line specifies the overall mean. The main effect for the single variable is estimated by relating the solid plotted line to the dashed reference line. As it can be seen, pH value has shown the most significant influence on the flocculation efficiency, as it has shown steeper slope compared to the other factors.

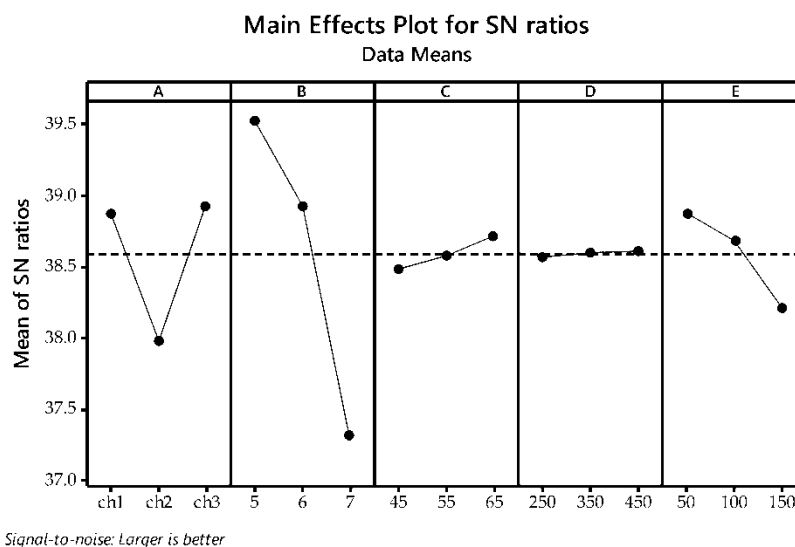


Figure 2. The main effects plot for the S/N analysis of the flocculation efficiency during the flocculation of the *Bacillus* sp. BioSol021 cultivation broth: A—chitosan type, B—pH value, C—chitosan dosage (mg/mL), D—rapid mixing speed (rpm), E—slow mixing speed (rpm).

The best flocculation efficiency was achieved at pH value 5. Chitosan is a weak polyelectrolyte, so its charge density is consequently significantly influenced by pH value [77]. The flocculation efficiency was lower at higher pH value. This observation is in a good agreement with the results found in literature [78,79]. Hughes et al. [78] have reported that lowering the pH value below 7.0 enables the flocculation of *B. subtilis* using chitosan. High pH value dependence of *B. amyloliquefaciens* flocculation efficiency by chitosan in the complex medium such as cultivation broth suggests a mechanism dependent upon the involvement of electrostatic interactions [78].

The flocculation processes is usually driven by two or more flocculation mechanisms [80]. Chitosan is a distinctive cationic polyelectrolyte with amino groups that are protonated in acidic aqueous medium [80]. Chitosan cationic behavior and Mw can be useful both for charge neutralization and for particle entrapment [81]. Due to the various structural characteristics and abundant functional groups of bacterial cells, the link between the chitosan structural factors (DD and Mw) and the flocculation efficiency of bacterial suspensions is an irregular one [77]. In this study, in the case of chitosan with the same DD, lower Mw chitosan, ch1 (compared to higher Mw chitosan ch2), had higher flocculation performance. Similar results were published for flocculation of anaerobic sludge [82]. Even though ch3 had higher Mw, flocculation efficiencies obtained for chitosan type 1 (ch1) and 3 (ch3) are similar probably due to higher DD (>90%) of ch3.

The flocculation efficiency exhibited a small increase when increasing the flocculant dosage. Cultivation broth is a complex matrix that contains various extracellular components, as well as residual medium nutrients, besides microbial cells. Chitosan interacts with all of these components and for all conducted experimental runs the flocculation efficiency was above 70%.

The main effects plot (Figure 2) shows speed of rapid mixing to be next to the overall mean (dash line), indicating that its impact on the flocculation efficiency is not significant in the selected experimental factor levels' range. These results are consistent with the ANOVA analysis, Table 6. These results suggest that all the selected values of rapid agitation rate were sufficient to ensure equal dispersion of the chitosan into the cultivation broth to incite efficient flocculation [83,84]. On the other hand, the influence of slow mixing speed is higher compared to the rapid mixing speed, as it has steeper slope (Figure 2). Intensification of the slow mixing (higher speed) resulted in the flocculation efficiency decrease. The reason for this can be breaking up of the formed flocs through intense mixing.

Table 6. Flocculation efficiency and precipitate antimicrobial activity results against the selected bacterial and fungal phytopathogens (L₁₈ array) during the flocculation of the *Bacillus* sp. BioSol021 cultivation broth.

Run	EF (%)	Antimicrobial Activity/Inhibition Zone Diameter (mm)			
		<i>Xanthomonas</i> sp.	<i>Colletotrichum</i> sp.	<i>Fusarium</i> sp.	<i>Aspergillus</i> sp.
	Y1	Y2	Y3	Y4	Y5
1	98.60	42.00	40.33	36.33	36.33
2	97.63	42.67	34.67	37.00	32.33
3	76.63	22.33	29.33	35.33	41.00
4	89.23	43.33	35.00	35.00	41.67
5	76.06	43.00	35.00	35.00	39.33
6	73.76	41.33	33.00	34.33	35.33
7	97.27	40.33	41.00	36.67	44.33
8	97.60	40.00	38.33	37.67	41.33
9	79.83	43.67	39.33	34.67	40.67
10	95.55	29.00	32.00	38.00	26.00
11	86.36	31.00	32.67	36.67	33.00
12	75.27	32.33	32.67	35.00	29.67
13	94.19	40.00	41.00	37.00	37.33
14	83.35	37.33	34.67	35.67	35.33
15	63.10	31.33	32.00	31.33	40.67
16	93.90	40.00	35.00	35.33	40.33
17	91.56	44.67	35.33	34.67	40.00
18	72.97	34.00	31.67	34.00	43.67

Y1—flocculation efficiency (%), Y2 to Y5—inhibition zone diameters (mm) against the selected phytopathogens.

From the data presented in Figure 2, the optimal flocculation parameters were A₃B₁C₃D₃E₁, i.e., chitosan type 3 (ch 3), pH value 5, flocculant dose 65 mg/L, and rapid and slow mixing rate 450 rpm and 50 rpm, respectively.

3.3. Taguchi Grey Relational Analysis (GRA) for Multi-Response Optimization

As mentioned previously, chitosan is well known by its flocculation properties, but at the same time it has been used in biocontrol of various microbial pathogens in agriculture [84]. For this reason, antimicrobial activity of the precipitate, consisting of chitosan and flocculated *Bacillus* sp. BioSol021 cells, was examined against different bacterial and fungal phytopathogens (*Xanthomonas* sp., *Colletotrichum* sp., *Fusarium* sp. and *Aspergillus* sp.). The goal of this study was to achieve both high flocculation efficiency and high biocontrol activity of the flocculated cultivation broth after sedimentation. A multi-response optimization using Taguchi GRA was carried out to achieve this goal. The results of the precipitate antimicrobial activity tests alongside the flocculation efficiency are given in Table 6.

Data pre-processing is the first step in GRA, implemented to transfer the original sequence to a comparable sequence. Numerical data are normalized to the values between 0 and 1. The normalized value of the original sequence for all responses is larger-the-better performance characteristic and it can be expressed by the following equation:

$$X_{ij} = \frac{Y_{ij} - \min(Y_{ij})}{\max(Y_{ij}) - \min(Y_{ij})} \quad (2)$$

where X_{ij} is the normalized response value and Y_{ij} is the response value obtained from the experimental runs. There were five responses, so j had values $j = 1, 2, 3, 4$ and 5 . The number of experimental runs i is the i -th experimental data ($i = 1, 2, 3, \dots, 18$). Values $\min(Y_{ij})$ and $\max(Y_{ij})$ represent the minimum and the maximum value of Y_{ij} for each response.

The next step in the GRA is calculation of grey relational coefficient (GRC) of each response using the following equation:

$$\text{GRC}_{ij} = \frac{(\Delta_{\min} + \psi \Delta_{\max})}{(\Delta_{ij} + \psi \Delta_{\max})} \quad (3)$$

where GRC_{ij} is the grey relational coefficient for j -th response in the i -th experimental run. Deviation sequences, Δ_{ij} , is treated as a quality loss from the target value, calculated as the difference between 1 and normalized value for each response. Distinguishing coefficient, ψ , takes values in range 0 to 1, and value of 0.5 was selected in this study.

Normalized values of the experimental data obtained after the normalization of the original data for the selected responses and their corresponding deviations are shown in Table 7.

Table 7. Original experimental data after normalization and their corresponding deviations during the flocculation of the *Bacillus* sp. BioSol021 cultivation broth and antimicrobial activity testing against the selected phytopathogens.

Run	Normalized Values					Deviation Sequences				
	Y1	Y2	Y3	Y4	Y5	Y1	Y2	Y3	Y4	Y5
1	1.0000	0.8806	0.9429	0.7500	0.5636	0.0000	0.1194	0.0571	0.2500	0.4364
2	0.9727	0.9104	0.4571	0.8500	0.3455	0.0273	0.0896	0.5429	0.1500	0.6545
3	0.3812	0.0000	0.0000	0.6000	0.8182	0.6188	1.0000	1.0000	0.4000	0.1818
4	0.7361	0.9403	0.4857	0.5500	0.8545	0.2639	0.0597	0.5143	0.4500	0.1455
5	0.3650	0.9254	0.4857	0.5500	0.7273	0.6350	0.0746	0.5143	0.4500	0.2727
6	0.3003	0.8507	0.3143	0.4500	0.5091	0.6997	0.1493	0.6857	0.5500	0.4909
7	0.9626	0.8060	1.0000	0.8000	1.0000	0.0374	0.1940	0.0000	0.2000	0.0000
8	0.9717	0.7910	0.7714	0.9500	0.8364	0.0283	0.2090	0.2286	0.0500	0.1636
9	0.4712	0.9552	0.8571	0.5000	0.8000	0.5288	0.0448	0.1429	0.5000	0.2000
10	0.9141	0.2985	0.2286	1.0000	0.0000	0.0859	0.7015	0.7714	0.0000	1.0000
11	0.6552	0.3881	0.2857	0.8000	0.3818	0.3448	0.6119	0.7143	0.2000	0.6182
12	0.3428	0.4478	0.2857	0.5500	0.2000	0.6572	0.5522	0.7143	0.4500	0.8000
13	0.8756	0.7910	1.0000	0.8500	0.6182	0.1244	0.2090	0.0000	0.1500	0.3818
14	0.5703	0.6716	0.4571	0.6500	0.5091	0.4297	0.3284	0.5429	0.3500	0.4909
15	0.0000	0.4030	0.2286	0.0000	0.8000	1.0000	0.5970	0.7714	1.0000	0.2000
16	0.8675	0.7910	0.4857	0.6000	0.7818	0.1325	0.2090	0.5143	0.4000	0.2182
17	0.8018	1.0000	0.5143	0.5000	0.7636	0.1982	0.0000	0.4857	0.5000	0.2364
18	0.2781	0.5224	0.2000	0.4000	0.9636	0.7219	0.4776	0.8000	0.6000	0.0364

Y1-flocculation efficiency (%), Y2 to Y5-inhibition zone diameters (mm) against the selected phytopathogens: *Xanthomonas* sp., *Colletotrichum* sp., *Fusarium* sp. and *Aspegillus* sp., respectively.

The last step was to perform the grey relational calculation on multi-responses using Equation (4):

$$\text{GRG}_i = \frac{1}{n} \sum_{j=1}^n \text{GRC}_{ij} \quad (4)$$

where GRG_i is the grey relational grade (GRG) for the i -th experimental run and n is the number of responses, in this study 5.

In this paper, the goal of achieving a good flocculation efficiency and high precipitate antimicrobial activity against the selected phytopathogens were determined to be equally important, i.e., the same weight was given to all responses for the GRG calculation. The GRCs, GRG, and S/N conversion of GRG for each run are shown in Table 8, with higher values being more desirable. The 7th experimental setting ($A_3B_1C_2D_1E_3$) was determined to be the preferred processing parameters combination (chitosan ch3, pH 5, flocculant dose 55 mg/L, rapid mixing 450 rpm and slow mixing 50 rpm), with a GRG value of 0.8730.

Table 8. Grey relational coefficient, grey relational grade (GRG) and S/N conversion of GRG for different operational parameters combinations during the flocculation of the *Bacillus* sp. BioSol021 cultivation broth and antimicrobial activity testing against the selected phytopathogens.

Run	Grey Relational Coefficient					GRG	S/N	Rank
	Y1	Y2	Y3	Y4	Y5			
1	1.0000	0.8072	0.8974	0.6667	0.5340	0.7811	−2.14629	3
2	0.9482	0.8481	0.4795	0.7692	0.4331	0.6956	−3.15261	5
3	0.4469	0.3333	0.3333	0.5556	0.7333	0.4805	−6.36628	16
4	0.6545	0.8933	0.4930	0.5263	0.7746	0.6684	−3.49982	8
5	0.4405	0.8701	0.4930	0.5263	0.6471	0.5954	−4.50383	11
6	0.4168	0.7701	0.4217	0.4762	0.5046	0.5179	−5.71558	15
7	0.9304	0.7204	1.0000	0.7143	1.0000	0.8730	−1.17951	1
8	0.9464	0.7053	0.6863	0.9091	0.7534	0.8001	−1.93719	2
9	0.4860	0.9178	0.7778	0.5000	0.7143	0.6792	−3.36039	7
10	0.8533	0.4161	0.3933	1.0000	0.3333	0.5992	−4.44838	10
11	0.5919	0.4497	0.4118	0.7143	0.4472	0.5229	−5.63086	14
12	0.4321	0.4752	0.4118	0.5263	0.3846	0.4460	−7.01354	18
13	0.8008	0.7053	1.0000	0.7692	0.5670	0.7685	−2.28754	4
14	0.5378	0.6036	0.4795	0.5882	0.5046	0.5427	−5.30826	12
15	0.3333	0.4558	0.3933	0.3333	0.7143	0.4460	−7.01333	17
16	0.7906	0.7053	0.4930	0.5556	0.6962	0.6481	−3.76703	9
17	0.7161	1.0000	0.5072	0.5000	0.6790	0.6805	−3.34368	6
18	0.4092	0.5115	0.3846	0.4545	0.9322	0.5384	−5.37790	13

Y1—flocculation efficiency (%), Y2 to Y5—inhibition zone diameters (mm) against the selected phytopathogens: *Xanthomonas* sp., *Colletotrichum* sp., *Fusarium* sp. and *Aspegillus* sp., respectively.

Table 9 shows the ANOVA analysis results of the S/N ratios for GRG. The obtained selected flocculation factors' *p*-values for S/N ratios indicated that pH value had the greatest effect on GRG (statistically significant at the significance level of 95%), followed by chitosan type, slow mixing rate and dosage. Rapid mixing rate was the least significant factor affecting GRG.

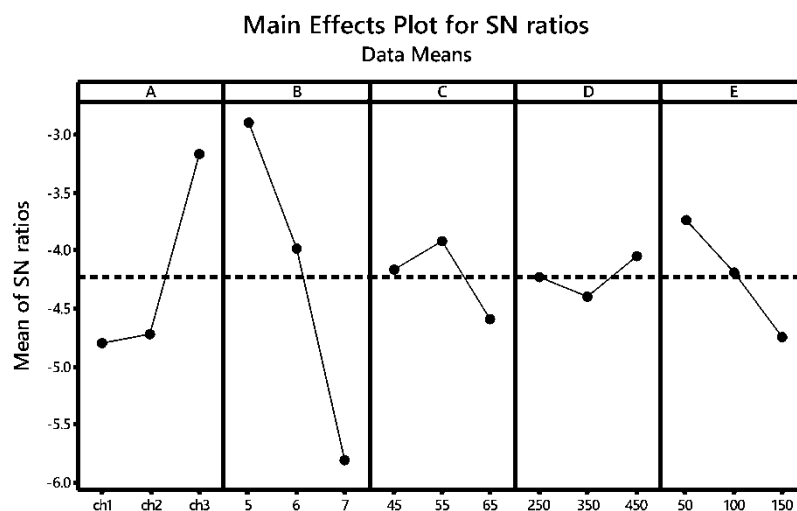
Table 9. Analysis of variance for S/N ratios of grey relational grade (GRG) during the flocculation of the *Bacillus* sp. BioSol021 cultivation broth and antimicrobial activity testing against the selected phytopathogens.

Scheme.	Degree of Freedom	Sum of Squares	Mean Square	F-Value	<i>p</i> -Value
A	2	10.2073	5.1037	3.01	0.114
B	2	26.1180	13.0590	7.71	0.017
C	2	1.3837	0.6918	0.41	0.680
D	2	0.3583	0.1791	0.11	0.901
E	2	3.0274	1.5137	0.89	0.451
Error	7	11.8635	1.6948		
Total	17	52.9581			

A—chitosan type, B—pH value, C—chitosan dosage (mg/mL), D—rapid mixing speed (rpm), E—slow mixing speed (rpm).

Figure 3 illustrates the main effects plot for the S/N of the GRG. In contrast to the flocculation optimization, differences between ch1 and ch3 were more pronounced when inhibition zone diameters against the selected bacterial and fungal phytopathogens were taken into account as the additional responses. The antimicrobial activity of chitosan is greater for higher DD [37], in this study ch3. Another reason for the improved effect of this chitosan type, in the case of multi-objective optimization, can be found in Mw difference between the applied chitosan types. In previous studies it was found that lower chitosan Mw has adverse effect on microorganism growth and multiplication [29]. Hence in this

case, chitosan with higher Mw could have beneficial effect on the precipitate antimicrobial activity against the selected bacterial and fungal plant pathogens.



Signal-to-noise: Larger is better

Figure 3. Main effects plot for the S/N analysis of the grey relational grade (GRG) during the flocculation of the *Bacillus* sp. BioSol021 cultivation broth and antimicrobial activity testing against the selected phytopathogens: A—chitosan type, B—pH value, C—chitosan dosage (mg/mL), D—rapid mixing speed (rpm), E—slow mixing speed (rpm).

As it can be seen from Figures 2 and 3, pH value has identical trend for both optimization cases. The highest GRG values, as well as chitosan flocculation efficiency, were obtained for acidic environment (pH 5). Similar as the flocculation efficiency, chitosan antimicrobial activity is higher in acidic environment [25,39].

In the case of multi-response optimization, the optimal chitosan concentration was found to be 55 mg/L. These results are rather enthusiastic due to the lower chitosan consumption during the flocculation procedure, affecting the economic viability of the proposed downstream procedure.

The influence of slow mixing rate is higher in the case of multi-response optimization compared to its influence in the case of flocculation efficiency optimization alone. In the same instance, slow mixing rate has steeper slope (Figure 3) compared to the influence on the flocculation efficiency. The same values of mixing rates can be applied in the case of multi-response optimization.

From the data given in Figure 3, the optimal flocculation parameters in order to obtain maximized values of the flocculation efficiency and antimicrobial activity against the selected phytopathogens were $A_3B_1C_2D_3E_1$, i.e., chitosan type 3 (ch 3), pH 5, flocculant dose 55 mg/L, and rapid and slow mixing rate 450 rpm and 50 rpm, respectively.

The $A_3B_1C_2D_3E_1$ had been the optimal factors combination of the multi-response optimization obtained by the GRA and this combination of operational parameters was applied in the validation experiment. The results of the validation test are presented in Table 10.

Table 10. Comparison of the optimization and experimental validation results during the flocculation of the *Bacillus* sp. BioSol021 cultivation broth and antimicrobial activity testing against the selected phytopathogens.

Output	Initial Controllable Parameters	Optimal Controllable Parameters	
		Prediction	Experiment
Parameter Set	A ₃ B ₁ C ₂ D ₁ E ₃	A ₃ B ₁ C ₂ D ₃ E ₁	A ₃ B ₁ C ₂ D ₃ E ₁
Y1	97.27	–	97.50
Y2	40.33	–	43.00
Y3	41.00	–	40.33
Y4	36.67	–	37.00
Y5	44.33	–	44.85
GRG	0.8730	0.8673	0.8956

A—chitosan type, B—pH value, C—chitosan dosage (mg/mL), D—rapid mixing speed (rpm), E—slow mixing speed (rpm); Y1—flocculation efficiency (%), Y2 to Y5—inhibition zone diameters (mm) against the selected phytopathogens: *Xanthomonas* sp., *Colletotrichum* sp., *Fusarium* sp. and *Aspergillus* sp., respectively; GRG—grey relational grade.

A good agreement between the actual and the predicted GRG was obtained. It is shown that multiple performance aspects of the flocculation process were improved, resulting in slightly improved response values.

Literature data suggests there is a synergistic effect between chitosan and endophytic *Bacillus* species [84] when it comes to antimicrobial activity against plant pathogens. Chitosan antimicrobial activity was confirmed against selected phytopathogens using the well/disc diffusion assay for chitosan type 3 (ch 3) and concentration 55 mg/L. For all tested phytopathogens inhibition zone diameter was in range 13.5–15 mm. Further analyses were conducted to evaluate and quantify the possible antimicrobial activity synergy between the *Bacillus* sp. BioSol021 and chitosan. *Bacillus* sp. BioSol021 cultivation broth was centrifuged at 12,000 rpm for 10 min and precipitated biomass was resuspended to the final volume of flocculated samples (flocculation precipitate) for comparison of antimicrobial activity between the antagonist biomass itself and flocculated samples. The results showed that antimicrobial activity testing of the suspended *Bacillus* sp. BioSol021 biomass without chitosan addition has resulted in the following inhibition zone diameters against *Xanthomonas* sp., *Colletotrichum* sp., *Fusarium* sp. and *Aspergillus* sp.—25.00 mm, 26.33 mm, 28.33 mm, and 30.33 mm, respectively. On the other hand, the results of antimicrobial activity testing of the flocculated samples showed the following values of inhibition zone diameters against *Xanthomonas* sp., *Colletotrichum* sp., *Fusarium* sp. and *Aspergillus* sp.—43.00 mm, 40.33 mm, 37.00 mm, and 44.85 mm, respectively. Higher antimicrobial activity of the flocculated samples suggested synergistic effect between the *Bacillus* sp. BioSol021 and chitosan in terms of the antagonistic effect against the tested plant pathogens.

4. Conclusions

In this study chitosan has proven to be an effective natural flocculant for removal of the *Bacillus* bacteria from the cultivation broth, reaching flocculation effectiveness up to 98.60%. Additionally, high precipitate antimicrobial activity against the selected phytopathogens was achieved. Experiments based on L₁₈ standard Taguchi orthogonal array design with five input parameters (chitosan type and dosage, pH value, rapid and slow mixing rates) have showed that pH value mainly determined flocculation efficiency, followed by the chitosan type. The flocculation efficiency exhibited a small intensification when increasing the flocculant dosage, whereas rapid mixing speed had a little effect on it. On the other hand, the influence of slow mixing speed is higher compared to the rapid mixing speed. A good flocculation efficiency and high antimicrobial activity indicating synergism between the *Bacillus* sp. BioSol021 biomass and chitosan confirm dual nature of chitosan as a flocculant, as well as a biocontrol agent for potential agricultural applications.

Author Contributions: Conceptualization, A.J. and J.G.; methodology, A.J. and J.G.; software, A.J., N.L. and M.G.; validation, S.D.; formal analysis, S.D., I.P., V.V. and M.G.; investigation, S.D., I.P. and V.V.; resources, A.J. and J.G.; data curation, A.J. and N.L.; writing—original draft preparation, S.D. and A.J.; writing—review and editing, I.P.; visualization, A.J. and N.L.; supervision, A.J. and J.G.; project administration, A.J. and J.G.; funding acquisition, A.J. and J.G. All authors have read and agreed to the published version of the manuscript.

Funding: This research was funded by the Science Fund of the Republic of Serbia, PROMIS, #6064541, BioSolAfla, and by the Ministry of Education, Science and Technological Development of the Republic of Serbia, grant number 451-03-68/2022-14/200134.

Institutional Review Board Statement: Not applicable.

Informed Consent Statement: Not applicable.

Data Availability Statement: Not applicable.

Conflicts of Interest: The authors declare no conflict of interest. The funders had no role in the design of the study; in the collection, analyses, or interpretation of data; in the writing of the manuscript; or in the decision to publish the results.

References

1. Kumar, S.; Singh, A. Biopesticides for integrated crop management: Environmental and regulatory aspects. *J. Biofertil. Biopestici.* **2014**, *5*, e121. [[CrossRef](#)]
2. Pacifico, M.G.; Eckstein, B.; Bettiol, W. Screening of *Bacillus* for the development of bioprotectans for the control of *Fusarium oxysporum* f. sp. *vasinfectum* and *meloidogyne incognita*. *Biol. Control.* **2021**, *164*, 104764. [[CrossRef](#)]
3. Awad, H.M.; El-Enshasy, H.A.; Hanapi, S.Z.; Hamed, E.R.; Rosidi, B. A new chitinase-producer strain *Streptomyces glauciniger* WICC-A03: Isolation and identification as a biocontrol agent for plants phytopathogenic fungi. *Nat. Prod. Res.* **2014**, *28*, 2273–2277. [[CrossRef](#)]
4. Hamed, E.R.; Awad, H.M.; Ghazi, E.A.; El-Gamal, N.G.; Shehata, H.S. *Trichoderma* sp. isolated from salinity soil using rice straw waste as biocontrol agent for cowpea plant pathogens. *J. App. Pharm. Sci.* **2015**, *5* (Suppl. 2), 091–098. [[CrossRef](#)]
5. Thiéry, I.; Hamon, S.; Delécluse, A.; Orduz, S. The introduction into *Bacillus sphaericus* of the *Bacillus thuringiensis* subsp. *medellin* *cyt1Ab1* gene results in higher susceptibility of resistant mosquito larva populations to *B. sphaericus*. *Appl. Environ. Microbiol.* **1998**, *64*, 3910–3916. [[CrossRef](#)] [[PubMed](#)]
6. Kunst, F.; Ogasawara, N.; Moszer, I.; Albertini, A.M.; Alloni, G.O.; Azevedo, V.; Bertero, M.G.; Bessières, P.; Bolotin, A.; Borchert, S.; et al. The complete genome sequence of the Gram-positive bacterium *Bacillus subtilis*. *Nature* **1997**, *390*, 249–256. [[CrossRef](#)]
7. Nicholson, W.L. Roles of *Bacillus* endospores in the environment. *Cell. Mol. Life Sci.* **2002**, *59*, 410–416. [[CrossRef](#)]
8. Gautam, S.; Chauhan, A.; Sharma, R.; Sehgal, R.; Shirkot, C.K. Potential of *Bacillus amyloliquefaciens* for biocontrol of bacterial canker of tomato incited by *Clavibacter michiganensis* ssp. *michiganensis*. *Microb. Pathog.* **2019**, *130*, 196–203. [[CrossRef](#)]
9. Abbas, A.; Khan, S.U.; Khan, W.U.; Saleh, T.A.; Khan, M.H.U.; Ullah, S.; Ali, A.; Ikram, M. Antagonist effects of strains of *Bacillus* spp. against *Rhizoctonia solani* for their protection against several plant diseases: Alternatives to chemical pesticides. *Comptes Rendus Biol.* **2019**, *342*, 124–135. [[CrossRef](#)]
10. Piggot, P.J.; Hilbert, D.W. Sporulation of *Bacillus subtilis*. *Curr. Opin. Microbiol.* **2004**, *7*, 579–586. [[CrossRef](#)]
11. Sundin, G.W.; Castiblanco, L.F.; Yuan, X.; Zeng, Q.; Yang, C.H. Challenges in bacterial molecular plant pathology. *Mol. Plant Pathol.* **2016**, *17*, 1506–1518. [[CrossRef](#)] [[PubMed](#)]
12. Teixidó, N.; Usall, J.; Torres, R. Insight into a successful development of biocontrol agents: Production, formulation, packaging, and shelf life as key aspects. *Horticulture* **2022**, *8*, 305. [[CrossRef](#)]
13. Mu, D.; Mu, X.; Xu, Z.; Du, Z.; Chen, G. Removing *Bacillus subtilis* from fermentation broth using alumina nanoparticles. *Bioresour. Technol.* **2015**, *197*, 508–511. [[CrossRef](#)] [[PubMed](#)]
14. Whittington, P.N. Fermentation broth clarification techniques. *Appl. Biochem. Biotechnol.* **1990**, *23*, 91–121. [[CrossRef](#)]
15. Gregory, J. Monitoring particle aggregation processes. *Adv. Colloid Interface Sci.* **2009**, *147–148*, 109–123. [[CrossRef](#)]
16. Aljuboori, A.H.R.; Idris, A.; Abdullah, N.; Mohamad, R. Production and characterization of a bioflocculant produced by *Aspergillus flavus*. *Bioresour. Technol.* **2013**, *127*, 489–493. [[CrossRef](#)]
17. Li, Q.; Liu, H.L.; Qi, Q.S.; Wang, F.S.; Zhang, Y.Z. Isolation and characterization of temperature and alkaline stable bioflocculant from *Agrobacterium* sp. M-503. *New Biotechnol.* **2010**, *27*, 789–794. [[CrossRef](#)]
18. Rudén, C. Acrylamide and cancer risk—expert risk assessments and the public debate. *Food Chem. Toxicol.* **2004**, *42*, 335–349. [[CrossRef](#)]
19. Wu, H.; Yang, R.; Li, R.; Long, C.; Yang, H.; Li, A. Modeling and optimization of the flocculation processes for removal of cationic and anionic dyes from water by an amphoteric grafting chitosan-based flocculant using response surface methodology. *Environ. Sci. Pollut. Res. Int.* **2015**, *22*, 13038–13048. [[CrossRef](#)]

20. Lananan, F.; Yunos, F.H.M.; Nasir, N.M.; Bakar, N.S.A.; Lam, S.S.; Jusoh, A. Optimization of biomass harvesting of microalgae, *Chlorella* sp. utilizing auto-flocculating microalgae, *Ankistrodesmus* sp. as bio-flocculant. *Int. Biodeterior. Biodegrad.* **2016**, *113*, 391–396. [[CrossRef](#)]
21. Liu, J.; Tao, Y.; Zhang, Y.; Li, A.; Li, T.; Sang, M.; Zhang, C. Freshwater microalgae harvested via flocculation induced by pH decrease. *Biotechnol. Biofuels* **2013**, *6*, 98. [[CrossRef](#)] [[PubMed](#)]
22. Xu, Y.; Purton, S.; Baganz, F. Chitosan flocculation to aid the harvesting of the microalga *Chlorella sorokiniana*. *Bioresour. Technol.* **2013**, *129*, 296–301. [[CrossRef](#)] [[PubMed](#)]
23. Tsai, G.J.; Su, W.H. Antibacterial activity of shrimp chitosan against *Escherichia coli*. *J. Food Prot.* **1999**, *62*, 239–243. [[CrossRef](#)]
24. Young, D.H.; Kauss, H. Release of calcium from suspension-cultured glycine max cells by chitosan, other polycations, and polyamines in relation to effects on membrane permeability. *Plant Physiol.* **1983**, *73*, 698–702. [[CrossRef](#)]
25. Sudarshan, N.R.; Hoover, D.G.; Knorr, D. Antibacterial action of chitosan. *Food Biotechnol.* **1992**, *6*, 257–272. [[CrossRef](#)]
26. Sebti, I.; Martial-Gros, A.; Carnet-Pantiez, A.; Grelier, S.; Coma, V. Chitosan polymer as bioactive coating and film against *Aspergillus niger* contamination. *J. Food Sci.* **2006**, *70*, 100–104. [[CrossRef](#)]
27. Cuero, R.G.; Osuji, G.; Washington, A. N-carboxymethyl chitosan inhibition of aflatoxin production: Role of zinc. *Biotechnol. Lett.* **1991**, *13*, 441–444. [[CrossRef](#)]
28. Guibal, E. Interactions of metal ions with chitosan-based sorbents: A review. *Sep. Purif. Technol.* **2004**, *38*, 43–74. [[CrossRef](#)]
29. Goy, R.C.; De Britto, D.; Assis, O.B.G. A review of the antimicrobial activity of chitosan. *Polím. Ciênc. Tecnol.* **2009**, *19*, 241–247. [[CrossRef](#)]
30. Kumar, M.N.V.R. A review of chitin and chitosan applications. *React. Funct. Polym.* **2000**, *46*, 1–27. [[CrossRef](#)]
31. Li, J.; Zhuang, S. Antibacterial activity of chitosan and its derivatives and their interaction mechanism with bacteria: Current state and perspectives. *Eur. Polym. J.* **2020**, *138*, 109984. [[CrossRef](#)]
32. Ma, Z.; Garrido-Maestu, A.; Jeong, K.C. Application, mode of action, and in vivo activity of chitosan and its micro- and nanoparticles as antimicrobial agents: A review. *Carbohydr. Polym.* **2017**, *176*, 257–265. [[CrossRef](#)] [[PubMed](#)]
33. No, H.K.; Park, N.Y.; Lee, S.H.; Meyers, S.P. Antibacterial activity of chitosans and chitosan oligomers with different molecular weights. *Int. J. Food Microbiol.* **2002**, *74*, 65–72. [[CrossRef](#)]
34. Coma, V.; Deschamps, A.; Martial-Gros, A. Bioactive packaging materials from edible chitosan polymer-antimicrobial activity assessment on dairy-related contaminants. *J. Food Sci.* **2003**, *68*, 2788–2792. [[CrossRef](#)]
35. Dutta, P.K.; Tripathi, S.; Mehrotra, G.K.; Dutta, J. Perspectives for chitosan based antimicrobial films in food applications. *Food Chem.* **2009**, *114*, 1173–1182. [[CrossRef](#)]
36. Jeon, Y.J.; Park, P.J.; Kim, S.K. Antimicrobial effect of chitooligosaccharides produced by bioreactor. *Carbohydr. Polym.* **2001**, *44*, 71–76. [[CrossRef](#)]
37. Jung, E.J.; Youn, D.K.; Lee, S.H.; No, H.K.; Ha, J.G.; Prinyawiwatkul, W. Antibacterial activity of chitosans with different degrees of deacetylation and viscosities. *Food Sci. Technol.* **2010**, *45*, 676–682. [[CrossRef](#)]
38. Lim, S.H.; Hudson, S.M. Synthesis and antimicrobial activity of a water-soluble chitosan derivative with a fiber-reactive group. *Carbohydr. Res.* **2004**, *339*, 313–319. [[CrossRef](#)]
39. Kong, M.; Chen, X.G.; Xing, K.; Park, H.J. Antimicrobial properties of chitosan and mode of action: A state of the art review. *Int. J. Food Microbiol.* **2010**, *144*, 51–63. [[CrossRef](#)]
40. Ghormade, V.; Pathan, E.K.; Deshpande, M.V. Can fungi compete with marine sources for chitosan production? *Int. J. Biol. Macromol.* **2017**, *104*, 1415–1421. [[CrossRef](#)]
41. No, H.K.; Kim, S.H.; Lee, S.H.; Park, N.Y.; Prinyawiwatkul, W. Stability and antibacterial activity of chitosan solutions affected by storage temperature and time. *Carbohydr. Polym.* **2006**, *65*, 174–178. [[CrossRef](#)]
42. El Ghaouth, A.; Arul, J.; Grenier, J.; Asselin, A. Antifungal activity of chitosan on two postharvest pathogens of strawberry fruits. *Phytopathology* **1992**, *82*, 398–402. [[CrossRef](#)]
43. Sahai, A.S.; Manocha, M.S. Chitinases of fungi and plants: Their involvement in morphogenesis and host-parasite interaction. *FEMS Microbiol. Rev.* **1993**, *11*, 317–338. [[CrossRef](#)]
44. Eweis, M.; Elkholy, S.S.; Elsabee, M.Z. Antifungal efficacy of chitosan and its thiourea derivatives upon the growth of some sugar-beet pathogens. *Int. J. Biol. Macromol.* **2006**, *38*, 1–8. [[CrossRef](#)]
45. Stössel, O.; Leuba, J.L. Effect of chitosan, chitin and some aminosugars on growth of various soilborne phytopathogenic fungi. *J. Phytopathol.* **1984**, *111*, 82–90. [[CrossRef](#)]
46. Bandara, S.; Du, H.; Carson, L.; Bradford, D.; Kommalapati, R. Agricultural and biomedical applications of chitosan-based nanomaterials. *Nanomaterials* **2020**, *10*, 1903. [[CrossRef](#)] [[PubMed](#)]
47. Sharif, R.; Mujtaba, M.; Rahman, M.U.; Shalmani, A.; Ahmad, H.; Anwar, T.; Tianchan, D.; Wang, X. The multifunctional role of chitosan in horticultural crops; A review. *Molecules* **2018**, *23*, 872. [[CrossRef](#)]
48. Orzali, L.; Corsi, B.; Forni, C.; Riccioni, L. Chitosan in agriculture: A new challenge for managing plant disease. In *Biological Activities and Application of Marine Polysaccharides*; Shalaby, E., Ed.; IntechOpen: London, UK, 2016.
49. Zhang, M.; Zhang, F.; Li, C.; An, H.; Wan, T.; Zhang, P. Application of chitosan and its derivative polymers in clinical medicine and agriculture. *Polymers* **2022**, *14*, 958. [[CrossRef](#)]
50. Shahrajabian, M.H.; Chaski, C.; Polyzos, N.; Tzortzakakis, N.; Petropoulos, S.A. Sustainable agriculture systems in vegetable production using chitin and chitosan as plant biostimulants. *Biomolecules* **2021**, *11*, 819. [[CrossRef](#)]

51. Vlajkov, V.; Anđelić, S.; Pajčin, I.; Grahovac, M.; Budakov, D.; Jokić, A.; Grahovac, J. Medium for the production of *Bacillus*-based biocontrol agent effective against aflatoxigenic *Aspergillus flavus*: Dual approach for modelling and optimization. *Microorganisms* **2022**, *10*, 1165. [CrossRef]
52. Vlajkov, V.; Grahovac, M.; Budakov, D.; Loc, M.; Pajčin, I.; Milić, D.; Novaković, T.; Grahovac, J. Distribution, Genetic Diversity and Biocontrol of Aflatoxigenic *Aspergillus flavus* in Serbian Maize Fields. *Toxins* **2021**, *13*, 687. [CrossRef] [PubMed]
53. Aoki, T.; O'Donnell, K.; Geiser, D.M. Systematics of key phytopathogenic *Fusarium* species: Current status and future challenges. *J. Gen. Plant Pathol.* **2014**, *80*, 189–201. [CrossRef]
54. Carbú, M.; Moraga, J.; Cantoral, J.M.; Collado, I.G.; Garrido, C. Recent approaches on the genomic analysis of the phytopathogenic fungus *Colletotrichum* spp. *Phytochem. Rev.* **2020**, *19*, 589–601. [CrossRef]
55. An, S.Q.; Potnis, N.; Dow, M.; Vorhölter, F.J.; He, Y.Q.; Becker, A.; Teper, D.; Li, Y.; Wang, N.; Bleris, L.; et al. Mechanistic insights into host adaptation, virulence and epidemiology of the phytopathogen *Xanthomonas*. *FEMS Microbiol. Rev.* **2020**, *44*, 1–32. [CrossRef] [PubMed]
56. Itako, A.T.; Tolentino, J.B., Jr.; da Silva, T.A.F., Jr.; Soman, J.M.; Maringoni, A.C. Chemical products induce resistance to *Xanthomonas perforans* in tomato. *Braz. J. Microbiol.* **2015**, *46*, 701–706. [CrossRef] [PubMed]
57. Lai, Y.R.; Lin, C.H.; Chang, C.P.; Ni, H.F.; Tsai, W.S.; Huang, C.J. Distribution of copper resistance gene variants of *Xanthomonas citri* subsp. *citri* and *Xanthomonas euvesicatoria* pv. *perforans*. *Plant Protect. Sci.* **2021**, *57*, 206–216. [CrossRef]
58. Mann, A.; Nehra, K.; Rana, J.S.; Dahiya, T. Antibiotic resistance in agriculture: Perspectives on upcoming strategies to overcome upsurge in resistance. *Curr. Res. Microb. Sci.* **2021**, *2*, 100030. [CrossRef] [PubMed]
59. Ministry of Agriculture, Forestry and Water Management of the Republic of Serbia-Plant Protection Directorate-List of Registered Plant Protection Agents Allowed for Application in Organic Agriculture. Available online: <http://www.minpolj.gov.rs/download/Lista-sredstava-za-zastitu-bilja-koja-se-mogu-koristiti-u-organskoj-poizvodnji-na-dan-07.04.2022.-godine.pdf?script=lat> (accessed on 15 May 2022).
60. Kumar, S.; Stecher, G.; Tamura, K. MEGA7: Molecular evolutionary genetics analysis version 7.0 for bigger datasets. *Mol. Biol. Evol.* **2016**, *33*, 1870–1874. [CrossRef] [PubMed]
61. Moretti, C.; Amatulli, M.T.; Buonaurio, R. PCR-based assay for the detection of *Xanthomonas euvesicatoria* causing pepper and tomato bacterial spot. *Appl. Microbiol.* **2009**, *49*, 466–471. [CrossRef] [PubMed]
62. Pajčin, I.; Vlajkov, V.; Frohme, M.; Grebinyk, S.; Grahovac, M.; Mojićević, M.; Grahovac, J. Pepper bacterial spot control by *Bacillus velezensis*: Bioprocess solution. *Microorganisms* **2020**, *8*, 1463. [CrossRef]
63. Sreenivasaprasad, S.; Sharada, K.; Brown, A.E.; Mills, P.R. PCR-based detection of *Colletotrichum acutatum* on strawberry. *Plant Pathol.* **1996**, *45*, 650–655. [CrossRef]
64. Grahovac, J.; Grahovac, M.; Dodić, J.; Bajić, B.; Balaž, J. Optimization of cultivation medium for enhanced production of antifungal metabolites by *Streptomyces hygroscopicus*. *Crop Prot.* **2014**, *65*, 143–152. [CrossRef]
65. Schilling, A.G.; Möller, E.M.; Geiger, H.H. Polymerase chain reaction-based assays for species-specific detection of *Fusarium culmorum*, *F. graminearum* and *F. avenaceum*. *Phytopathology* **1996**, *86*, 515–522. [CrossRef]
66. Turner, A.S.; Lees, A.K.; Rezanoor, H.N.; Nicholson, P. Refinement of PCR-detection of *Fusarium avenaceum* and evidence from DNA marker studies for phenetic relatedness to *Fusarium tricinctum*. *Plant Pathol.* **1998**, *47*, 278–288. [CrossRef]
67. Tarlanović, J.; Petreš, M.; Grahovac, M.; Milić, B.; Magazin, N.; Hrustić, J.; Mihajlović, J. Effects of 1-MCP and dynamic controlled atmosphere on apple fruit rot caused by *Fusarium avenaceum*. *Pestic. Phytomed.* **2018**, *33*, 109–117. [CrossRef]
68. Jiménez-Delgado, R.; Valdés-Rodríguez, S.E.; Olalde-Portugal, V.; Abraham-Juárez, R.; García-Hernández, J.L. Effect of pH and temperature on the growth and antagonistic activity of *Bacillus subtilis* on *Rhizoctonia solani*. *Rev. Mex. Fitopatol.* **2018**, *36*, 256–275. [CrossRef]
69. Hazan, R.; Que, Y.A.; Maura, D.; Rahme, L.G. A method for high throughput determination of viable bacteria cell counts in 96-well plates. *BMC Microbiol.* **2012**, *12*, 259. [CrossRef]
70. Malbaša, R.; Vitas, J.; Vukmanović, S. *Analytical Chemistry: A Practicum with a Workbook*; University of Technology Novi Sad: Novi Sad, Serbia, 2021.
71. Cunniff, P. Association of Official Analytical Chemists. In *Official Methods of Analysis of AOAC International*, 16th ed.; Association of Official Analytical Chemists: Gaithersburg, MD, USA, 1995; Section 33.2.11, Method 991.20.
72. Kacker, R.N. Off-line quality control, parameter design, and the Taguchi method. *J. Qual. Technol.* **1985**, *17*, 176–188. [CrossRef]
73. Phadke, M.S.; Dehnad, K. Optimization of product and process design for quality and cost. *Qual. Reliab. Eng. Int.* **1988**, *4*, 105–112. [CrossRef]
74. Jozić, S.; Bajić, D.; Celent, L. Application of compressed cold air cooling: Achieving multiple performance characteristics in end milling process. *J. Clean. Prod.* **2015**, *100*, 325–332. [CrossRef]
75. Tamura, K.; Nei, M. Estimation of the number of nucleotide substitutions in the control region of mitochondrial DNA in humans and chimpanzees. *Mol. Biol. Evol.* **1993**, *10*, 512–526. [CrossRef] [PubMed]
76. Strand, S.P.; Vandvik, M.S.; Vårum, K.M.; Østgaard, K. Screening of Chitosans and Conditions for Bacterial Flocculation. *Biomacromolecules* **2001**, *2*, 126–133. [CrossRef] [PubMed]
77. Hughes, J.; Ramsden, D.K.; Symes, K.C. The flocculation of bacteria using cationic synthetic flocculants and chitosan. *Biotechnol. Tech.* **1990**, *4*, 55–60. [CrossRef]

78. Weir, S.; Ramsden, D.K.; Hughes, J. The effect of complex growth media on microbial flocculation by the cationic polyelectrolyte chitosan. *Biotechnol. Tech.* **1993**, *7*, 111–116. [[CrossRef](#)]
79. Yang, R.; Li, H.; Huang, M.; Yang, H.; Li, A. A review on chitosan-based flocculants and their applications in water treatment. *Water Res.* **2016**, *95*, 59–89. [[CrossRef](#)]
80. Roussy, J.; Van Vooren, M.; Guibal, E. Influence of chitosan characteristics on coagulation and flocculation of organic suspensions. *J. Appl. Polym. Sci.* **2005**, *98*, 2070–2079. [[CrossRef](#)]
81. Kaseamchochoung, C.; Lertsutthiwong, P.; Phalakornkule, C. Influence of Chitosan Characteristics and Environmental Conditions on Flocculation of Anaerobic Sludge. *Water Environ. Res.* **2006**, *78*, 2210–2216. [[CrossRef](#)]
82. Sheng, W.J.; Peng, X.; Lee, D.J.; Su, A. Coagulation of particles through rapid mixing. *Dry. Technol.* **2006**, *24*, 1271–1276. [[CrossRef](#)]
83. Rossini, M.; Garcia Garrido, J.; Galluzzo, M. Optimization of the coagulation–flocculation treatment: Influence of rapid mix parameters. *Water Res.* **1999**, *33*, 1817–1826. [[CrossRef](#)]
84. Rkhaila, A.; Chtouki, T.; Erguig, H.; El Haloui, N.; Ounine, K. Chemical proprieties of biopolymers (chitin/chitosan) and their synergic effects with endophytic *Bacillus* species: Unlimited applications in agriculture. *Molecules* **2021**, *26*, 1117. [[CrossRef](#)]