



OPEN

SUBJECT AREAS:

NANOSCIENCE AND
TECHNOLOGYMAGNETIC PROPERTIES AND
MATERIALSReceived
13 June 2014Accepted
15 August 2014Published
2 September 2014

Correspondence and
requests for materials
should be addressed to
B.B.
(bbalasubramanian2@
unl.edu) or D.J.S.
(dsellmyer@unl.edu)

Magnetic nanostructuring and overcoming Brown's paradox to realize extraordinary high-temperature energy products

Balamurugan Balasubramanian, Pinaki Mukherjee, Ralph Skomski, Priyanka Manchanda, Bhaskar Das & David J. Sellmyer

Nebraska Center for Materials and Nanoscience and Department of Physics and Astronomy, University of Nebraska, Lincoln, NE-68588 (USA).

Nanoscience has been one of the outstanding driving forces in technology recently, arguably more so in magnetism than in any other branch of science and technology. Due to nanoscale bit size, a single computer hard disk is now able to store the text of 3,000,000 average-size books, and today's high-performance permanent magnets—found in hybrid cars, wind turbines, and disk drives—are nanostructured to a large degree. The nanostructures ideally are designed from Co- and Fe-rich building blocks without critical rare-earth elements, and often are required to exhibit high coercivity and magnetization at elevated temperatures of typically up to 180 °C for many important permanent-magnet applications. Here we achieve this goal in exchange-coupled hard-soft composite films by effective nanostructuring of high-anisotropy HfCo₇ nanoparticles with a high-magnetization Fe₆₅Co₃₅ phase. An analysis based on a model structure shows that the soft-phase addition improves the performance of the hard-magnetic material by mitigating Brown's paradox in magnetism, a substantial reduction of coercivity from the anisotropy field. The nanostructures exhibit a high room-temperature energy product of about 20.3 MGOe (161.5 kJ/m³), which is a record for a rare earth- or Pt-free magnetic material and retain values as high as 17.1 MGOe (136.1 kJ/m³) at 180 °C.

Magnetic nanostructuring based on nanoparticle building blocks can be used to improve the performance for a variety of applications^{1–5}. Arguably, the most important and most nontrivial magnetic property is coercivity H_c . Coercivity tends to increase roughly linearly with the first magnetic anisotropy constant K_1 , but anisotropy is not the only consideration. Deducing H_c from K_1 alone, by equating it with the anisotropy field $H_A = 2K_1/M_s$, where M_s is the saturation magnetization, tends to grossly overestimate H_c , often by more than one order of magnitude^{6,7}. This unfortunate circumstance, known as Brown's paradox, and explained by defects or nanoscale imperfections, reduces H_c to about αH_A , where the “Kronmüller factor” α describes nanostructural details^{8,9}. As-cast materials often exhibit $\alpha \leq 0.01$, and sophisticated processing methods are necessary to reach $\alpha = 0.3$ ^{10,11}. As in the case of bulk alloys, $\alpha \ll 1$ means that nucleation centers or “magnetically soft spots” ruin H_c . The strength of the effect is governed by the ratio R/δ_B , where R is the radius of the harmful soft region and $\delta_B = \pi\sqrt{A/K_1}$ is the Bloch-wall width of the hard phase^{12,13}. The exchange stiffness A is in the range of about 1 $\mu\text{erg}/\text{cm}$ (10 pJ/m) for a broad range of technical materials, whereas K_1 is of the order of 50 Mergs/cm³ (5 MJ/m³) for typical hard-magnetic alloys, corresponding to a small $\delta_B \approx 4.4$ nm. The parameter α decreases with increasing ratio R/δ_B , so that soft regions larger than 10 nm are usually very harmful to H_c .

In this article, we develop a different way to improve H_c , exploiting the fact that α increases with decreasing anisotropy constant K_1 . In other words, the smaller K_1 leads to a larger δ_B , and subsequently results in smaller ratio R/δ_B . This approach is not usually considered, because the gain in α is overcompensated by the reduction of H_A . However, top-end permanent-magnet materials such as Nd₂Fe₁₄B and SmCo₅ contain critical rare-earth elements with raw-materials supply bottlenecks, and many alternative materials exhibit somewhat reduced anisotropy constants of the order of 10 Mergs/cm³ or contain expensive Pt^{14–17}. Subject to these materials constraints, our approach focuses on Co alloys with heavy transition metals and offers the benefit of effective nanostructuring on a coarser scale of $2\delta_B \approx 20$ nm. We achieve this nanostructuring by embedding HfCo₇

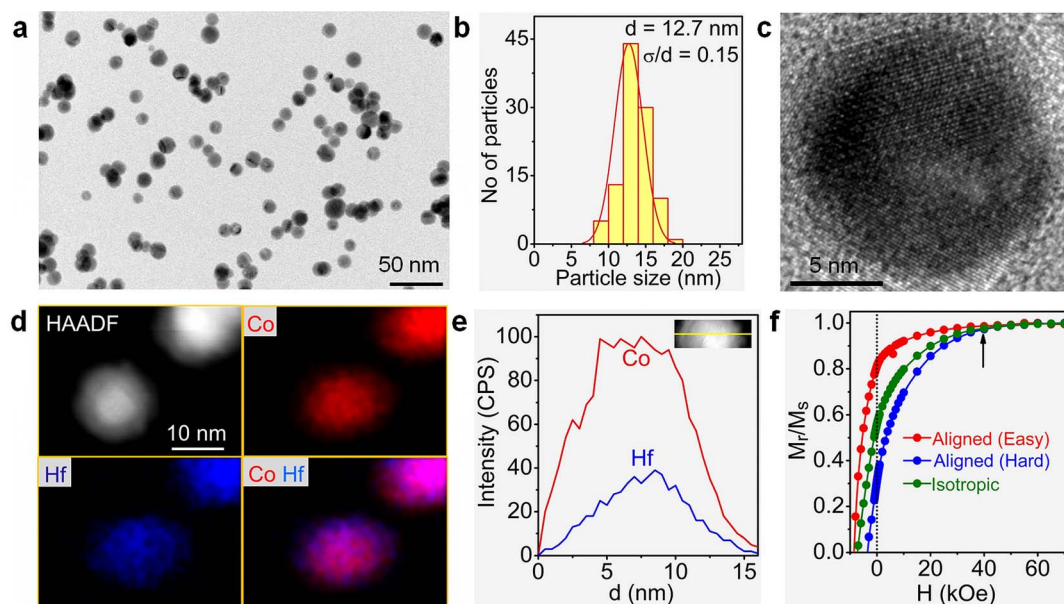


Figure 1 | Hf-Co nanoparticles. (a), Transmission electron microscope (TEM) image. (b), The corresponding particle-size histogram (d and σ/d are the average particle size and an rms standard deviation, respectively). (c), A high-resolution TEM image of a nanoparticle. (d), A high-angle annular dark-field (HAADF) image showing the Z (atomic number) contrast and the corresponding energy-dispersive x-ray spectroscopy (EDS) color maps, showing the color distributions for Co (red), Hf (blue), and combined Co and Hf. (e), An EDS line scan showing Co and Hf distributions across a nanoparticle (shown in the inset). (f), Room-temperature hysteresis loops measured along the easy- and hard-axis directions for an aligned nanoparticle film and for an isotropic nanoparticle film.

nanoparticles in a soft $\text{Fe}_{65}\text{Co}_{35}$ phase, where the high-magnetization $\text{Fe}_{65}\text{Co}_{35}$ phase improves the net magnetization and the overall permanent-magnet performance (energy product) of the films. The fabrication of the nanostructures requires the realization of high magnetocrystalline anisotropy, easy-axis alignment, and a suitable nanostructure with high H_c and high M_s . The magnetic anisotropy is often reduced in nanoparticles due to disorder and surface effects, and this leads to thermally activated magnetization reversal at high temperatures, which subsequently destroys the permanent-magnet properties^{18–20}. By contrast, thermally activated reversal of individual nanoparticles is unimportant in the present context, because the magnetic nanoparticles are exchange-coupled in both bulk magnets and thin films.

Results

The fabrication of our nanostructures involves two main aspects: the creation of ensembles of easy-axis aligned hard-magnetic nanoparticles and the formation of a soft-magnetic matrix. The single-step cluster-deposition process used for the sample fabrication is described elsewhere^{21,22}, and also schematically shown as Fig. S1 in Supplementary Information. First, randomly-oriented Hf-Co nanoparticles having stoichiometry close to HfCo_7 are produced in a water-cooled gas-aggregation chamber by sputtering a Co-Hf composite target. The high-anisotropy crystal structure in Hf-Co nanoparticles is achieved during the gas-aggregation process without a subsequent high-temperature anneal, often required in the case of wet-chemical and conventional physical vapor-deposition methods^{14,17–19,23}. Thus, in the case of the cluster-deposition method, sintering associated with the annealing process is avoided, and thus the size-distribution and easy-axis alignment can be controlled precisely in the nanocluster-assembled nanostructures. In particular, the accomplishment of easy-axis alignment of nanoparticles in the gas-phase using a magnetic field before combining with a soft phase is an important processing step to obtain a high remanent magnetization M_r close to M_s ^{21,22,24,25}. As compared to the magnetic alignment performed in the solid phase, relatively small fields of about 0.8 to 5 kOe are sufficient for the alignment of nanoparticles in the gas

phase^{21,22,24,25}. For example, in the present study, when the nanoparticles are *in-flight* in the gas phase towards the deposition chamber, the easy axes are aligned in a magnetic field of about 5 kOe before co-depositing the nanoparticles with Fe and Co atoms on Si (001) substrate using a DC magnetron sputtering gun (see Fig. S1 in Supplementary Information).

Nanoparticle building blocks. The next step is to control the particle size, composition, crystalline ordering, and easy-axis alignment of the Hf-Co nanoparticles to achieve suitable magnetic properties, especially a high coercivity, which is a precondition to use the nanoparticles as building blocks to fabricate exchange-coupled nanocomposites. Figure 1a shows a transmission-electron-microscope (TEM) image of the Hf-Co nanoparticles that we have used to fabricate our nanocomposites. The corresponding particle-size histogram, shown in Fig. 1b, yields an average particle size of about 12.7 nm with an rms standard deviation of $\sigma/d \approx 0.15$. The Hf-Co nanoparticles are single-crystalline with a high degree of atomic ordering, as can be seen from the high-resolution TEM image in Fig. 1c.

The composition of the nanoparticles was investigated using scanning-TEM measurements (STEM). Figure 1d shows a high-angle annular dark-field (HAADF) image of two neighboring Hf-Co nanoparticles with Z (atomic number) contrast maps and the corresponding EDS (energy-dispersive x-ray spectroscopy) color maps for Co, Hf, and the combined Co and Hf distributions. Figure 1e shows an EDS line scan measured across a single nanoparticle (shown in the inset of Fig. 1e). The STEM results reveal a uniform distribution of Hf and Co across the nanoparticles and the nanoparticles have a stoichiometry close to the HfCo_7 phase, which crystallizes in an orthorhombic structure (see Fig. S2 in Supplementary Information for phase identification using x-ray diffraction pattern) and is also known to be magnetically anisotropic²⁶.

For the magnetic measurements, the Hf-Co nanoparticles were deposited on Si (001) substrates for extended deposition times to form dense and aligned nanoparticle films. Figure 1f shows the first- and second-quadrant in-plane hysteresis loops, the magnetization M



as a function of the applied magnetic field H , measured at room temperature along the easy- and hard-axis directions (see Fig. S3 in Supplementary Information for full hysteresis loops). For comparison, the room-temperature hysteresis loop of an isotropic (randomly oriented) nanoparticle film is also shown in Fig. 1f. The aligned nanoparticle film exhibits a comparatively high coercivity $H_c = 8.65$ kOe and a high remanence ratio $M_r/M_s = 0.82$ along the easy axis with respect to those values measured along the hard axis ($H_c = 3.5$ kOe and $M_r/M_s = 0.31$) and for isotropic film ($H_c = 7.3$ kOe and $M_r/M_s = 0.55$). This result clearly indicates an effective easy-axis alignment in Hf-Co nanoparticles.

Figure 1f also shows that the magnetization curves merge only in a high field of about 40 kOe (indicated by an arrow). Generally a large saturation field is required in the case of high-anisotropy nanoparticles, and also for nanoparticles that possess spin canting at interface originating from noncollinear spin structure. However, the pronounced noncollinear spin structures, as frequently observed in oxide nanoparticles and some metal nanoparticles, require competing ferromagnetic and antiferromagnetic exchange interactions²⁷. In the case of strong Co-rich ferromagnetic materials, for the range of measurement field used in this study, the noncollinearity effects are generally smaller by a factor of 100–1000 as compared to the anisotropy effect²⁷, and thus the observed large saturation field only suggests a fairly high HfCo₇ magnetic anisotropy. We also have estimated K_1 by fitting the magnetization curve of the isotropic Hf-Co nanoparticle film in the high-field range of about 20 to 70 kOe to the law-of-approach to saturation (Fig. S4 in Supplementary Information). This analysis yields $K_1 \approx 10.6$ Mergs/cm³, which is in the range of the reported value, $K_1 = 14$ Mergs/cm³, for bulk HfCo₇ alloys²⁶.

Besides having high K_1 and average particles size of about 12.7 nm, far less than the critical single-domain size ($D_{sd} \approx 248$ nm), the aligned HfCo₇ nanoparticles show only $H_c = 8.65$ kOe at 300 K. Normally the coercivity of hard magnetic nanoparticles smaller than the critical single-domain size is governed by localized nucleation at particles' surface¹⁰. In the meantime, the exchange-interactions between the nanoparticles also lower H_c . If high-anisotropy nanoparticles are deposited on a substrate and are dilute, they cannot interact with each other and thus will behave approximately as Stoner-Wohlfarth particles with a high coercivity $H_c = 2K_1/M_s$. The exchange interactions created by more dense nanoparticles generally lower H_c ^{28,29}, so embedded nanoparticles in a non-magnetic matrix will maintain a relatively high H_c ^{30,31}. For example, in the aligned HfCo₇ nanoparticles, we may have some degree of exchange interactions between the particles, which decreases H_c to 8.65 kOe from the Stoner-Wohlfarth value $H_c = 2K_1/M_s \approx 24.5$ kOe. However, the aim of this study is to fabricate dense hard-soft nanocomposites for obtaining strong exchange coupling to provide a high M_s , while maintaining somewhat reasonable H_c .

Composite nanostructuring. To form exchange-coupled Hf-Co:Fe-Co nanocomposite films, the aligned Hf-Co nanoparticles are co-deposited with Fe and Co atoms. Figure 2 shows the HAADF images with the Z-contrast and corresponding EDS color maps for Hf-Co:Fe-Co nanocomposite films having different volume fractions f of the magnetically soft Fe-Co phase, namely $f = 0.22$ (or 22 vol.%, Fig. 2a) and $f = 0.07$ (Fig. 2b). The EDS color maps, where Hf, Co, and Fe are blue, red, and green, respectively, indicate that the Fe-Co region is Fe-rich (green). The Co distribution is not visible in the matrix film due to the black background, but the individual and combined color mappings of Hf and Co shows a Co-rich region at the surface as compared to the core due to the soft Fe-Co addition (Fig. 2a). Also, x-ray diffraction analysis shows that the soft phase exhibits a body-centered cubic structure similar to that of bulk Fe₆₅Co₃₅ (Fig. S5 in Supplementary Information). For the samples

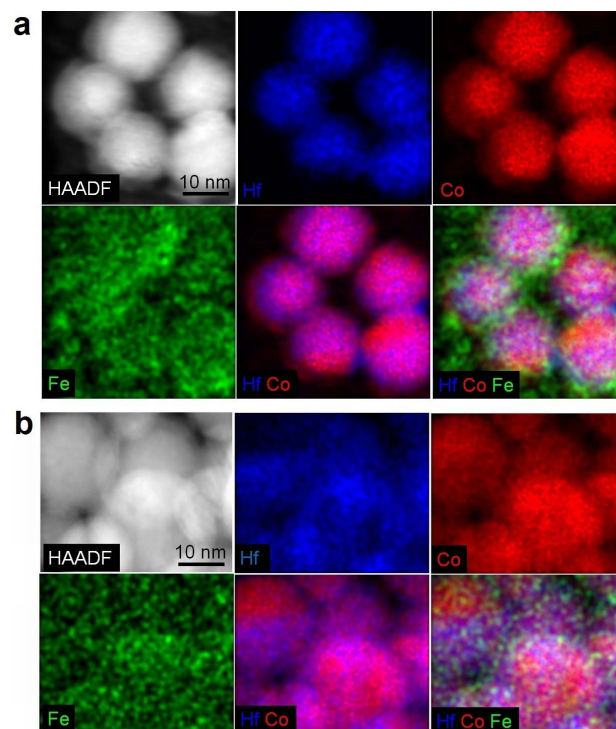


Figure 2 | Nanostructuring. HAADF image and the corresponding EDS color maps for aligned Hf-Co:Fe-Co nanocomposite thin films having Fe-Co contents of (a), $f = 0.22$ and (b), $f = 0.07$. The color distributions for Hf (blue), Co (red), Fe (green), combined Hf and Co, and combined Hf, Co, and Fe are shown.

shown in Fig. 2a and 2b, the deposition time was controlled to yield low coverage densities (thickness), to reveal the distribution of the soft phase during nanostructuring and to show that the nanoparticles are coated with and surrounded by the Fe-Co alloy.

Magnetism of the nanocomposites. The STEM results suggest that the structure of the Hf-Co:Fe-Co nanocomposite films is similar to the schematic picture of Fig. 3a. In this nanostructure, the easy-axis aligned Hf-Co nanoparticles are dispersed in an Fe-Co matrix. Except for fields near H_c , the magnetization of the soft phase is parallel to the easy axis of the aligned hard nanoparticles, due to effective exchange coupling. This magnetic structure is confirmed by the room-temperature hysteresis loops measured along the easy-axis direction for the nanocomposite films. Figure 3b shows single-phase in-plane hysteresis loops for all considered volume fractions of the soft phase. A weak kink observed near $H = 0$ in the second quadrant of the hysteresis loops indicates the magnetization-reversal of the soft Fe-Co phase, originating from a weak decoupling between the soft and hard phases. The nanocomposites having $f = 0.07$ and $f = 0.22$ also exhibit high remanence ratio $M_r/M_s = 0.90$, as compared to $M_r/M_s = 0.82$ for bare Hf-Co nanoparticles. Like aligned HfCo₇ nanoparticles, the aligned nanocomposite films also show high easy-axis H_c and M_r/M_s as compared to H_c and M_r/M_s measured along the hard-axis direction (Fig. S6 in Supplementary Information). Note that the room-temperature initial magnetization curves also were measured along the easy-axis direction for Hf-Co and Hf-Co:Fe-Co nanocomposite films and the results reveal a nucleation-type coercivity mechanism (Fig. S7 in Supplementary Information).

Model structure. Figure 4a shows the measured room-temperature values of the coercivity H_c and of the saturation polarization $J_s = 4\pi M_s$ as a function of f . As expected from the volume fractions of the two phases, J_s continuously increases from 10.8 to 23.5 kG as the

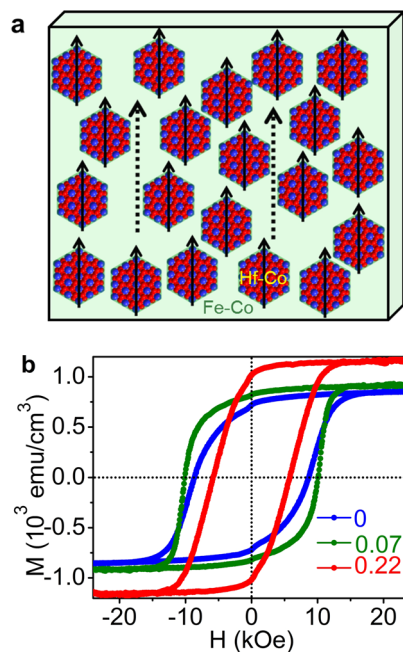


Figure 3 | Exchange-coupled nanocomposites. (a), A schematic of the nanocomposite sample showing the dispersion of the easy-axis aligned Hf-Co nanoparticle-structures in a Fe-Co film. (b), Room-temperature hysteresis loops for Hf-Co:Fe-Co having different Fe-Co contents f .

volume fraction f of the soft phase increases from 0 to 1. On the other hand, H_c initially increases from 8.65 kOe to 10.1 kOe on increasing the soft phase content from 0 to 0.07, and then continuously decreases on further addition of the soft phase. The initial increase of H_c reflects the formation of the composite nanostructure and is probably caused by reduced real-structure imperfections upon surface coating and/or a comparatively better easy-axis alignment³².

From Fig. 4a we see that the addition of soft phase does not deteriorate the coercivity excessively, and an appreciable room-temperature value of $H_c = 6$ kOe was observed for Fe-Co content $f = 0.22$. In aligned hard-soft exchange-coupled nanocomposites¹⁰, the onset of magnetization reversal (or nucleation) is described by the nucleation mode $\phi(\mathbf{r})$ that defines the local magnetization angle relative to the easy axis of the hard phase. The mode obeys

$$-A\nabla^2\phi + \left(K_1(\mathbf{r}) - \frac{M(\mathbf{r})H}{2}\right)\phi = 0 \quad (1)$$

where $K_1(\mathbf{r})$ and $M(\mathbf{r})$ are the local anisotropy and local magnetization, respectively. The corresponding nucleation field (coercivity) is

$$H_N = \frac{2K_1}{M_s} \left(1 - f \frac{M_{\text{soft}}}{\langle M \rangle}\right) \left(1 - \frac{f^2(1-f)L^2}{\delta_B^2} \frac{M_{\text{soft}}^2}{\langle M \rangle^2}\right) - D_{\text{eff}} < M > \quad (2)$$

where L , K_1 , M_s are the average center-to-center distance, magnetic anisotropy constant, and saturation magnetization of the hard particles, respectively. M_{soft} represents the saturation magnetization of the soft phase and $\langle M \rangle = (1-f)M_s + fM_{\text{soft}}$ is the average saturation magnetization. In equation (2), the product of the two terms in parentheses is equal to α , and the demagnetization factor D_{eff} is ideally zero for thin films subjected to an in-plane magnetic field H applied parallel to the anisotropy easy axis, as in the present case. The main correction (to $\alpha = 1$) comes from the ratio L^2/δ_B^2 . Since $\delta_B = \pi\sqrt{A/K_1}$ is relatively large for HfCo₇, about 12 nm, α is fairly large. Note that the equation (2) is limited to small-scale nanostructures (L smaller than about 20 nm.)

In order to understand the magnetization reversal, we have also used equation (1) to estimate the nucleation mode numerically for an

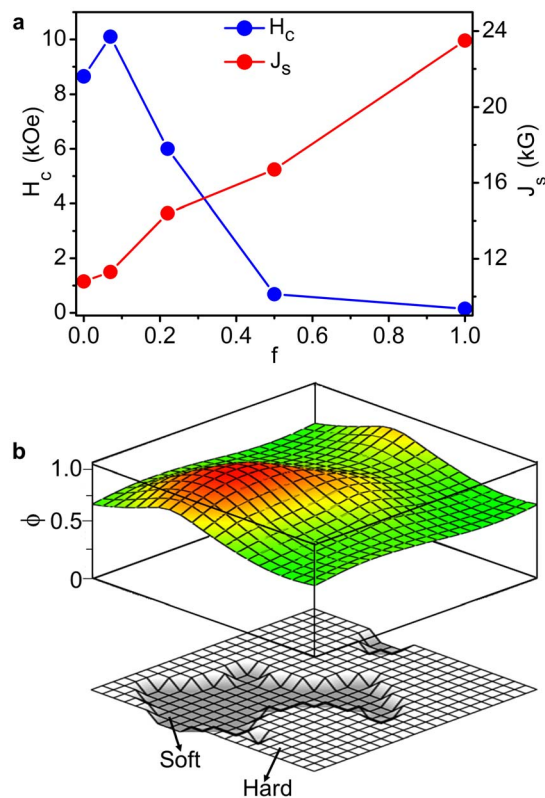


Figure 4 | Magnetic properties. (a), Coercivity H_c and saturation magnetic polarization J_s measured at 300 K as a function of Fe-Co content f . (b), A thin film model structure with a total area of $10 \text{ nm} \times 10 \text{ nm}$ and having a soft-phase content $f \approx 0.25$ (bottom) and a three-dimensional visualization of the onset of magnetization reversal or nucleation mode ϕ (top).

ideal thin-film model structure, shown in Fig. 4b, which is similar to our nanocomposite films. Note that, by definition, the soft phase is already included in calculating the parameter α for the model structure shown in Fig. 4b, and a good example is Kronmüller's original analysis⁸, where the main effect comes from a built-in soft region. The model structure (bottom image in Fig. 4b) has a total area of $10 \text{ nm} \times 10 \text{ nm}$ with $f = 0.25$ and creates a nucleation mode (top image of Fig. 4b) that is centered around the soft region but penetrates deep into the hard region. If the nanocomposite films were macroscopic rather than nanoscale, then the nucleation mode would be localized almost entirely in the soft regions and lead to very low H_c . However, in small-scale nanostructures, such as the present ones, the mode is largely delocalized—extending into the hard phase—and therefore benefits from the admixture of the anisotropy of the hard grains. This penetration means that the hard phase micromagnetically stabilizes the soft phase and realizes a nearly uniform nucleation mode.

The corresponding penetration depth is of the order of δ_B ^{12,13} and increases with decreasing K_1 , leading to a tradeoff between enhanced exchange length ($\sim 1/K_1^{1/2}$) and reduced anisotropy field ($\sim K_1$). From a simplistic viewpoint, the high anisotropy always wins. However, in reality, Brown's paradox states in effect that H_c is usually much smaller than H_A . The paradox is explained by defects^{6,8,12} and leads to a coercivity reduction to about αH_A ^{8,12}. For example, the numerical calculation yields $\alpha \approx 0.70$ for the ideal nanostructure shown in Fig. 4b, and thus the nanocomposite structure is expected to retain considerable coercivity from the hard phase. For example, in supporting this trend, our Hf-Co:FeCo nanocomposite film with $f = 0.22$ almost retains 69% of the hard-phase coercivity.

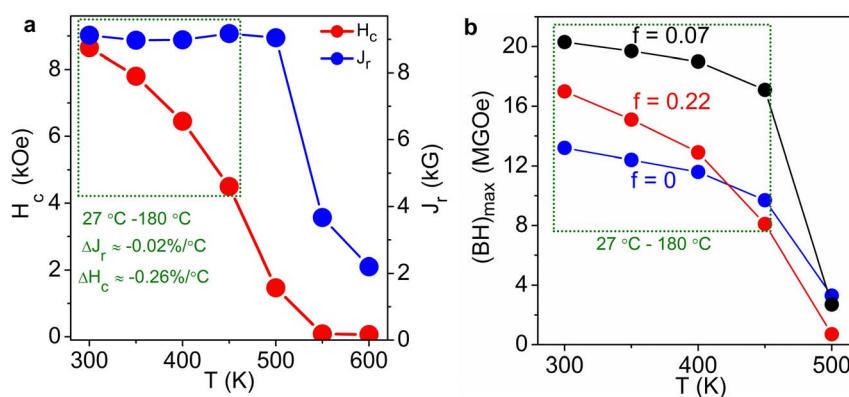


Figure 5 | High-temperature performance. (a), Temperature-dependent coercivity H_c and remanence J_r for Hf-Co nanoparticles. ΔH_c and ΔJ_r denote the temperature coefficients in the temperature range of 27 °C to 180 °C. (b), The measured energy products $(BH)_{\text{max}}$ for nanocomposite films having different soft Fe-Co phase content f . $(BH)_{\text{max}}$ is the maximum value from the second quadrant of the BH curve ($B = H + 4\pi M$ is the magnetic flux density). The dotted green rectangles in (a) and (b) mark the typical temperature region of 27 °C to 180 °C.

High-temperature performance. Permanent magnets often are required to operate above room temperature, for example at about 180 °C in high-performance motors, and it is important that remanent magnetic polarization J_r and coercivity H_c remain high at the operation temperature. The same applies to the energy product, a key figure of merit that describes the magnet's ability to store magnetostatic energy in free space¹². Of crucial importance in this regard are the reversible temperature coefficients $\Delta J_r = dJ_r/dT$ and $\Delta H_c = dH_c/dT$ of remanence and coercivity³³. For example, Fig. 5a shows the measured values of H_c and J_r for Hf-Co nanoparticles as a function of temperature. The Hf-Co nanoparticles exhibit appreciable coercivities (from 8.65 to 4.5 kOe) and remanences (from 9.2 to 9.0 kG) for the temperature range of 27 °C to 180 °C. Note that J_r shows a slight increase to 9.2 kG at 450 K as compared to $J_r = 9.1$ kG (at 300 K) and $J_r = 9.0$ kG (at 400 K) and this variation is within the experimental error in magnetization. Figure 5a yields very low average temperature coefficients $\Delta J_r \approx -0.02\%/^{\circ}\text{C}$ and $\Delta H_c \approx -0.26\%/^{\circ}\text{C}$ for HfCo₇ nanoparticles, which are far superior to the values obtained for the leading high-performance permanent-magnet material Nd₂Fe₁₄B ($\Delta J_r = -0.10\%/^{\circ}\text{C}$ and $\Delta H_c = -0.40\%/^{\circ}\text{C}$)^{33–35}. This result can be attributed to the presence of about 87.5 at% of high Curie temperature Co in HfCo₇ nanoparticles. Similar trends are found in the nanocomposites, such as high coercivities of 10.1 and 4.2 kOe ($f = 0.07$) and of 6.0 and 1.9 kOe ($f = 0.22$) in the temperature range of 27 °C–180 °C. Note that K_1 decreases with increasing temperature, which further enhances δ_B and makes the nanostructuring more effective.

Discussion. The low temperature coefficients translate into a favorable temperature dependence of the nominal energy product corresponding to the mass of the magnetic materials in the films (Fig. 5b). For example, the nanocomposite having $f = 0.07$ exhibits energy products of 20.3 MGOe (161.5 kJ/m³) at 27 °C and 17.1 MGOe (136.1 kJ/m³) at 180 °C. 20.3 MGOe at room temperature is the record energy product for a critical rare earth- or expensive Pt-free material^{16,21,36,37}. In addition, the energy product, 17.1 MGOe, obtained at 180 °C is the highest reported value for non-rare-earth or Pt-free materials. FePt-based alloys have shown a high energy product at room temperature (~ 54 MGOe)³⁸. However, to the best of our knowledge, high-temperature energy products have not been reported for FePt. The excellent high-temperature performance in our Co-rich nanostructures is achieved in spite of the fact that the anisotropy of the hard HfCo₇ nanoparticles is relatively modest, by overcoming Brown's paradox through nanostructuring. Also, for the first time, the potential of nanoparticles for fabricating high-temperature permanent-magnet materials is demonstrated. Naturally,

for bulk magnetic applications, scale-up methods to create such nanostructures remain a significant challenge, but our approach provides useful insights for developing future rare-earth-free permanent magnets.

Methods

The aligned Hf-Co nanoparticles and the Hf-Co:Fe-Co nanocomposites were produced using a cluster-deposition method described elsewhere (also see the supplementary information S1)^{21,22}. Some of the nanoparticles were deposited on carbon-coated copper grids with low coverage densities to measure the average particle size and size distribution using a FEI Tecnai Osiris (Scanning) transmission electron microscope. For the SQUID (superconducting quantum interference device) and PPMS (physical property measurement system) measurements, thin films of dense-packed nanoparticles and nanocomposites were fabricated on single-crystalline Si (001) substrates and the error in evaluating the coercivity and magnetization from the hysteresis loops is within 2%. The mass (or nominal thickness) of the films was measured using a quartz-crystal thickness monitor. The thickness of the films reported in this study was always in the range of 110–280 nm. The nanoparticle/nanocomposite thin films were capped with a thin SiO₂ cap layer immediately after deposition by using a radio-frequency magnetron sputtering gun located in the deposition chamber. X-ray diffraction measurement of Hf-Co nanoparticles deposited on Si (001) substrate was carried out using a Rigaku D/Max-B diffractometer with a Co K₂ wavelength of about 1.7889 Å.

1. Kuch, W. Magnetic nanostructures: Edge atoms do all the work. *Nature Mater.* **2**, 505–506 (2003).
2. Reiss, G. & Hütten, A. Magnetic nanoparticles: Applications beyond data storage. *Nature Mater.* **4**, 725–726 (2004).
3. Sellmyer, D. J. Applied physics: Strong magnets by self-assembly. *Nature* **420**, 374–375 (2004).
4. Zhang, Z. H. *et al.* Evidence of intrinsic ferromagnetism in individual dilute magnetic semiconducting nanostructures. *Nature Nanotech.* **4**, 523–527 (2009).
5. Lee, J.-H. *et al.* Exchange-coupled magnetic nanoparticles for efficient heat induction. *Nature Nanotech.* **6**, 418 (2011).
6. Brown, W. F. *Micromagnetics* (Wiley, New York, 1963).
7. Aharoni, A. Theoretical search for domain nucleation. *Rev. Mod. Phys.* **34**, 227–238 (1962).
8. Kronmüller, H. Theory of nucleation fields in inhomogeneous ferromagnets. *phys. stat. sol. (b)* **144**, 385–396 (1987).
9. D. Givord, D. & Rossignol, M. F. [Coercivity. in *Rare-earth Iron Permanent Magnets*] [Coey, J. M. D. (ed.)] [218–285] (University Press, Oxford, 1996).
10. Skomski, R. Nanomagnetism. *J. Phys.: Condens. Matter* **15**, R841–896 (2003).
11. Skomski, R. & Coey, J. M. D. *Permanent Magnetism* (Institute of Physics, Bristol, 1999).
12. Kneller, E. F. & Hawig, R. The exchange-spring magnet: a new material principle for permanent magnets. *IEEE Trans. Magn.* **27**, 3588–3600 (1991).
13. Skomski, R. & Coey, J. M. D. Giant energy product in nanostructured two-phase magnets. *Phys. Rev. B* **48**, 15812–15816 (1993).
14. Poudyal, N. & Liu, J. P. Advances in nanostructured permanent magnet research. *J. Phys. D: Appl. Phys.* **46**, 043001 (2013).
15. Coey, J. M. D. Permanent magnets: Plugging the gap. *Scripta Materialia* **67**, 524–529 (2012).
16. Jones, N. The pull of stronger magnets. *Nature* **472**, 22–23 (2011).



17. Zeng, H., Li, J., Liu, J. P., Wang, Z. L. & Sun, S. Exchange-coupled nanocomposite magnets by nanoparticle self-assembly. *Nature* **420**, 395–398 (2002).
18. Antoniak, C. *et al.* A guideline for atomistic design and understanding of ultrahard nanomagnets. *Nature Commun.* **2**, 528 (2011).
19. Dmitrieva, O. *et al.* Magnetic moment of Fe in oxide-free FePt nanoparticles. *Phys. Rev. B* **76**, 064414 (2007).
20. Rong, C.-B., Poudyal, N. & Liu, J. P. Effect of thermal fluctuations on magnetization reversal of Li_0 FePt nanoparticles. *J. Phys. D: Appl. Phys.* **43**, 495001 (2010).
21. Balasubramanian, B., Das, B., Skomski, R., Zhang, W. Y. & Sellmyer, D. J. Novel nanostructured rare-earth-free magnetic materials with high energy products. *Adv. Mat.* **25**, 6090–6093 (2013).
22. Balamurugan, B., Das, B., Shah, V. R., Skomski, R. & Sellmyer, D. J. Assembly of uniaxially aligned rare-earth-free nanomagnets. *Appl. Phys. Lett.* **101**, 122407 (2012).
23. Alloyeau, D. *et al.* Size and shape effects on the order-disorder transition in CoPt nanoparticles. *Nat. Mater.* **8**, 940–946 (2009).
24. Qiu, J.-M., Bai, J. & Wang, J.-P. *In situ* magnetic field alignment of directly ordered Li_0 FePt nanoparticles. *Appl. Phys. Lett.* **89**, 222506 (2006).
25. Le Roy, D., Morel, R., Brenac, A. & Notin, L. Anisotropy easy axes alignment of deposited Co nanoclusters. *J. Mag. Mat. Mat.* **323**, 127–129 (2011).
26. Das, B. *et al.* HfCo_7 -based rare-earth-free permanent-magnet alloys. *IEEE Trans. Magn.* **49**, 3330–3333 (2013).
27. Skomski, R. *Simple Models of Magnetism* (University Press, Oxford 2008).
28. Qiu, J.-M. & Wang, J.-P. Mono dispersed and highly ordered Li_0 FePt nanoparticles prepared in the gas phase. *Appl. Phys. Lett.* **88**, 192505 (2006).
29. Balasubramanian, B. *et al.* Cluster synthesis and direct ordering of rare-earth transition-metal nanomagnets. *Nano Lett.* **11**, 1747–1752 (2011).
30. Xu, Y., Yan, M. L., Zhou, J. & Sellmyer, D. J. Magnetic properties of dilute FePt:Co nanocluster films. *J. Appl. Phys.* **97**, 10J320 (2005).
31. Akdogan, O., Li, W., Balasubramanian, B., Sellmyer, D. J., & Hadjipanayis, G. C. Effect of exchange interactions on the coercivity of SmCo_5 nanoparticles made by cluster beam deposition. *Adv. Funct. Mater.* **23**, 3262–3267.
32. Li, H. *et al.* Simultaneously increasing the magnetization and coercivity of bulk nanocomposite magnets via severe plastic deformation. *Appl. Phys. Lett.* **103**, 142406 (2013).
33. Constantinides, S. Understanding and using reversible temperature coefficients. <http://www.arnoldmagnetics.com/WorkArea/DownloadAsset.aspx?id=4433> (2009) Date of access: 04/08/2014.
34. Furlani, F. E. *Permanent Magnets and Electromechanical Devices* (Academic Press, London, 2001).
35. Bai, G., Gao, R. W., Sun, Y., Han, G. B. & Wang, B. Study of high-coercivity sintered NdFeB magnets. *J. Magn. Mater.* **308**, 20–23 (2007).
36. Balke, B., Fecher, G. H., Winterlik, J., & Felser, C. Mn_2Ga , a compensated ferrimagnet with high Curie temperature and low magnetic moment for spin torque transfer applications. *Appl. Phys. Lett.* **90**, 152504 (2007).
37. Yang, J. B. *et al.* A. Magnetic properties of the MnBi intermetallic compound. *Appl. Phys. Lett.* **79**, 1846–1848 (2001).
38. Liu, Y., George, T. A., Skomski, R. & Sellmyer, D. J. Aligned and exchange-coupled FePt-based films. *Appl. Phys. Lett.* **99**, 172504 (2011).

Acknowledgments

This research is supported by the U.S. Department of Energy, Basic Energy Sciences, Experimental Condensed Matter Physics Program Grant (DE-FG02-04ER46152, synthesis and magnetic characterization), U.S. Department of Energy, EERE, AMES Grant (DE-AC02-07CH11358, structural characterization and theory). The research also benefited from U.S. National Science Foundation, MRI Grant (DMR-0960110, electron microscopy). This work was performed in part in Facilities of the Nebraska Center for Materials and Nanoscience, which is supported by the Nebraska Research Initiative.

Author contributions

B.B., D.J.S. and R.S. developed the concept, and B.B. and D.J.S. designed the experiments. B.B. carried out the preparation and characterization of the nanocomposites samples. P.M. (Pinaki Mukherjee) carried out the TEM measurements. R.S. and P.M. (Priyanka Manchanda) performed the model calculations. B.B., R.S. and D.J.S. analyzed the results and wrote the manuscript. B.D. contributed to the preparation of the bulk $\text{Fe}_{65}\text{Co}_{35}$ alloys. All authors critically read and commented on the manuscript.

Additional information

Supplementary information accompanies this paper at <http://www.nature.com/scientificreports>

Competing financial interests: The authors declare no competing financial interests.

How to cite this article: Balasubramanian, B. *et al.* Magnetic nanostructuring and overcoming Brown's paradox to realize extraordinary high-temperature energy products. *Sci. Rep.* **4**, 6265; DOI:10.1038/srep06265 (2014).



This work is licensed under a Creative Commons Attribution 4.0 International License. The images or other third party material in this article are included in the article's Creative Commons license, unless indicated otherwise in the credit line; if the material is not included under the Creative Commons license, users will need to obtain permission from the license holder in order to reproduce the material. To view a copy of this license, visit <http://creativecommons.org/licenses/by/4.0/>