

Clinical Utilization of DiaSorin Molecular Polymerase Chain Reaction in *Pneumocystis Pneumonia*

Gregory L. Damhorst,^{1,2} Kari J. Broder,² Elizabeth C. Overton,³ Ronelio Rara,³ Lindsay M. Busch,¹ Eileen M. Burd,^{1,2} Andrew S. Webster,¹ Colleen S. Kraft,^{1,2} and Ahmed Babiker^{1,2,3}

¹Division of Infectious Diseases, Department of Medicine, Emory University School of Medicine, Atlanta, Georgia, USA, ²Department of Pathology and Laboratory Medicine, Emory University School of Medicine, Atlanta, Georgia, USA, and ³Emory Healthcare, Atlanta, Georgia, USA

Background. *Pneumocystis jirovecii* polymerase chain reaction (PCR) testing is a sensitive diagnostic tool but does not distinguish infection from colonization. Cycle threshold (C_T) may correlate with fungal burden and could be considered in clinical decision making. Clinical use of PCR and significance of C_T values have not previously been examined with the DiaSorin Molecular platform.

Methods. Retrospective review of *P jirovecii* PCR, C_T values and clinical data from 18 months in a multihospital academic health system. The diagnostic performance of PCR with respect to pathology and correlation of C_T with severity were examined.

Results. Ninety-nine of 1006 (9.8%) assays from 786 patients in 919 encounters were positive. Among 91 (9.9%) encounters in which *P jirovecii* pneumonia (PJP) was treated, 41 (45%) were influenced by positive PCR. Negative PCR influenced discontinuation of therapy in 35 cases. Sensitivity and specificity of PCR were 93% (95% CI, 68%–100%) and 94% (95% CI, 91%–96%) with respect to pathology. C_T values from deep respiratory specimens were significantly different among treated patients ($P = .04$) and those with positive pathology results ($P < .0001$) compared to patients not treated and those with negative pathology, respectively, and was highly predictive of positive pathology results (area under the curve = 0.92). No significant difference was observed in comparisons based on indicators of disease severity.

Conclusions. *Pneumocystis jirovecii* PCR was a highly impactful tool in the diagnosis and management of PJP, and use of C_T values may have value in the treatment decision process in select cases. Further investigation in a prospective manner is needed.

Keywords. diagnosis; *Pneumocystis jirovecii*; pneumonia; quantitative PCR.

Pneumocystis jirovecii is a ubiquitous fungal organism that can cause pneumonia in immunocompromised hosts [1, 2]. Traditional diagnosis of *P jirovecii* pneumonia (PJP) is based on microscopic examination of sputum, bronchoalveolar lavage (BAL), or lung tissue biopsies. The sensitivity of microscopic examination ranges broadly from <50% to >90%, depending on staining procedure, specimen type, and quality [3, 4].

Polymerase chain reaction (PCR) allows for sensitive detection of *P jirovecii*, but at the expense of specificity for active disease. *Pneumocystis jirovecii* DNA can be detected in specimens derived from asymptomatic individuals where its presence is likely to represent colonization rather than active disease. A

positive PCR assay in an individual without overt pneumonia is therefore a diagnostic dilemma that requires a broader assessment to determine if treatment is appropriate. This ambiguity underlies the difficulty in quantifying diagnostic performance of *P jirovecii* PCR as there is no perfect gold standard for comparison. Microscopic examination of specimens obtained by bronchoscopy, while still not perfectly sensitive, might be considered the closest approximation of “ground truth,” as deeper sampling (such as BAL specimens and transbronchial biopsy) may be more sensitive for achieving diagnosis compared to induced sputum [5]. But since not every patient suspected of PJP undergoes bronchoscopy, analysis of only those cases involving bronchoscopy is likely to introduce sampling bias and may inaccurately reflect the performance of PCR in a broader population. Some studies have alternatively employed the judgment of a clinician as a reference standard—either the treatment team managing the patient in real time or a retrospective adjudicator [6–9].

Several studies report the diagnostic performance of *P jirovecii* PCR with varying reference standards and have demonstrated a high sensitivity and specificity of PCR from BAL fluid when compared to microscopic evaluation or measurements of the commonly used serum biomarkers lactate dehydrogenase (LDH) and (1-3)- β -D-glucan (BDG) [10–13]. Furthermore,

Received 27 October 2021; editorial decision 6 December 2021; accepted 8 December 2021; published online 10 January 2022.

Correspondence: Gregory L. Damhorst, MD, PhD, Division of Infectious Diseases, Emory University School of Medicine, 100 Woodruff Circle, Atlanta, GA 30322, USA (gregory.damhorst@emory.edu).

Open Forum Infectious Diseases® 2022

© The Author(s) 2022. Published by Oxford University Press on behalf of Infectious Diseases Society of America. This is an Open Access article distributed under the terms of the Creative Commons Attribution-NonCommercial-NoDerivs licence (<https://creativecommons.org/licenses/by-nc-nd/4.0/>), which permits non-commercial reproduction and distribution of the work, in any medium, provided the original work is not altered or transformed in any way, and that the work is properly cited. For commercial re-use, please contact journals.permissions@oup.com <https://doi.org/10.1093/ofid/ofab634>

quantification of organism burden by examination of the PCR cycle threshold (C_T) has been considered a tool to improve the specificity of PCR for discrimination between PJP and colonization [14]. This has exclusively been performed using in-house PCR assays not commercially available [7–9, 15–21] with rare exception [6]. The Emory University Hospital Microbiology Laboratory uses a thoroughly validated, laboratory-developed real-time PCR assay using primers that amplify the *P jirovecii* mtLSU gene with a CFR610- and BHQ-2-labeled detection probe (DiaSorin Molecular LLC, Cypress, California) on the commercially available LIAISON MDX thermocycler. Use of this platform for the detection of *P jirovecii* DNA has only been described in 1 prior report and showed a high sensitivity and negative predictive value when compared to a *P jirovecii* immunofluorescence assay on BAL samples from immunocompromised patients [22].

Here we describe diagnostic performance and clinical impact of the use of a *P jirovecii* real-time PCR assay on the DiaSorin Molecular LIAISON MDX thermocycler. We report diagnostic performance with respect to histopathology or cytopathology (hereafter referred to as pathology) and describe the relationship between C_T values and indicators of disease severity.

METHODS

Patients and Medical Record Data

We included results from the Emory University Hospital Microbiology Laboratory, which services 6 hospitals and affiliated outpatient clinics in the Atlanta metropolitan area. Data from adult patients were considered from the implementation of the assay on 28 March 2019 through 18 September 2020. Query of the electronic medical record included specimen descriptors and dates, respiratory support (eg, supplemental oxygen and mechanical ventilation), serum biomarkers, pathology results, and antimicrobial agents. Manual review of the electronic medical record determined the patient's underlying condition, dates of relevant therapy, use of adjunctive steroids, time of discharge or death, and the radiologist's interpretation of computed tomography or chest radiography preceding the *Pneumocystis* PCR result (Supplementary Materials). The study was considered exempt from institutional review board review.

Sample Preparation and PCR Assay

Preparation of respiratory specimens and PCR reagents are described in the Supplementary Materials. Reaction master mix was pipetted into a reaction well in the DiaSorin universal disc followed by the addition of prepared specimen. C_T values were obtained from LIAISON MDX Studio Software.

Definition of Treatment Decision Opportunity

All PCR results were assumed to correspond to an opportunity to initiate treatment for PJP except for any results collected during treatment for PJP that followed a prior positive PCR

result. Electronic medical records were reviewed to determine PJP empiric and directed therapy duration and medical team treatment decisions.

Pathology Gold Standard

All available pathology reports from each encounter were filtered to include cytology of BAL fluid and tissue pathology from transbronchial biopsy.

Statistical Analysis

A single C_T value for each unique treatment decision was employed in our analysis. Redundant C_T values resulting from replicate assays of a single specimen or assays of multiple specimens collected on the same date for a single patient were excluded and only the lowest C_T value from all available results was analyzed. PCR and pathology results were only paired if specimens were obtained within 2 days of each other (irrespective of which specimen was obtained first). When multiple PCR results and/or pathology results were available for a unique encounter, a pathology result was matched with the PCR result corresponding closest in time. No pathology result or PCR result was used twice, and unmatched results were excluded from the analysis.

Following chart review and tabulation of patient data in Microsoft Excel, statistical analysis was completed in MATLAB (The MathWorks, Inc, Natick, Massachusetts), R version 4.0.2 (Vienna, Austria) and the RStudio interface version 1.3.1073 (Boston, Massachusetts) software packages. Between-group comparisons were made with a 2-sided *t* test. Sensitivity, specificity, negative and positive predictive values, and their corresponding 95% confidence intervals (CIs) were calculated using the R package epiR. Receiver operating characteristic curves were constructed using the MATLAB function *perfcurve*.

RESULTS

PCR Assays

Among 786 unique patients and 919 encounters, there were 1080 unique results including 120 (11.1%) in which *P jirovecii* DNA was detected (positive PCR) and 960 (88.9%) in which DNA was not detected (negative PCR). Twenty-one of 120 (17.5%) positive results were excluded from analysis: 20 did not represent opportunities for a treatment decision, and in 1 case C_T was not available. Fifty-three of 960 (5.5%) negative results were excluded due to redundancy (see Supplementary Materials for details of result exclusion). This resulted in a total of 1006 results included in the final analysis across 785 unique patients in 918 encounters: 99 positive results with corresponding C_T values (Figure 1A) and 907 negative results considered to represent treatment decisions ("cases"). Characteristics of these patients and specimens are included in Table 1.

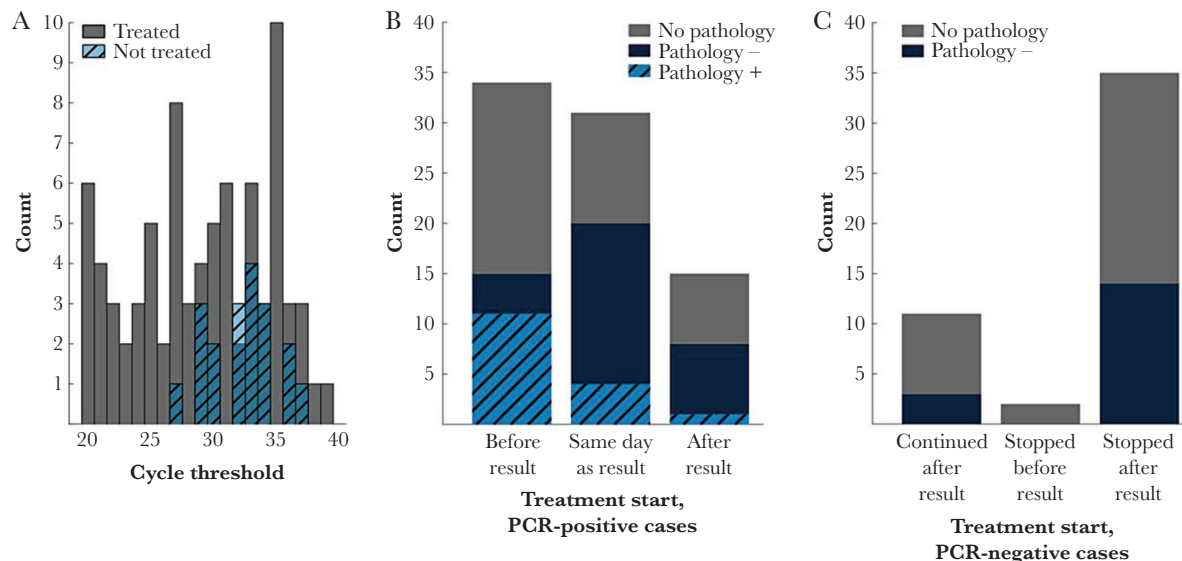


Figure 1. A, Histograms of cycle threshold values grouped by treatment decision. B, Treatment initiation relative to positive polymerase chain reaction (PCR) results. C, Treatment status following negative PCR results.

Clinical Impact

Among 80 PCR-positive cases treated for PJP, 34 (42.5%) had already initiated treatment prior to the result, 31 (38.8%) were started on treatment the same day as the result, and 15 (18.8%) were started following the result (11 the day following; 1 each on day 2, 3, and 4, respectively, after result;

and 1 treated during outpatient follow-up in an unspecified time frame) (Figure 1B). One case where treatment was initiated following the PCR result had positive pathology and 4 cases where treatment was initiated the same day as the PCR result had positive pathology (in all 5 cases, pathology specimens were derived from the same bronchoscopy as the PCR specimen).

Table 1. Patient and Specimen Characteristics

Characteristic	PCR-Positive, No. (%)	PCR-Negative, No. (%)
No. of patients	92	705
No. of encounters	97	827
Inpatient	93 (96)	594 (72)
Outpatient	4 (4)	233 (28)
Specimen type, No.	99	907
Bronchoalveolar lavage	51 (52)	661 (73)
Induced sputum	21 (21)	55 (6)
Sputum	20 (20)	107 (12)
Mini-bronchoalveolar lavage	4 (4)	58 (6)
Bronchial washing	2 (2)	9 (1)
Endotracheal aspirate	1 (1)	12 (1)
Bronchial brush	0 (0)	2 (0)
Tracheal aspirate	0 (0)	3 (0)
Underlying condition		
HIV/AIDS	40 (43)	...
Solid organ transplant	20 (22)	...
Autoimmune/inflammatory disease	10 (11)	...
Solid organ malignancy	7 (8)	...
Hematologic malignancy	14 (15)	...
Stem cell transplant	5 (5)	...
No apparent immunocompromise	4 (4)	...
Cirrhosis/ESLD	3 (3)	...
Congenital immunodeficiency	1 (1)	...

Abbreviations: ESLD, end-stage liver disease; HIV, human immunodeficiency virus; PCR, polymerase chain reaction.

Among 907 PCR-negative cases, 48 (5.4%) received any duration of *Pneumocystis*-directed therapy. Empiric treatment was stopped following the negative PCR result in 35 cases (72.9%; Figure 1C). Only 5 (14.3%) of these continued to receive treatment beyond the day following PCR result (2 were stopped on the second day, 2 on the third day, and 1 on the sixth day following PCR result). Fourteen of 35 (40.0%) PCR-negative cases followed by cessation of treatment had corresponding pathology within 2 days; all 14 were negative for microscopic evidence of *P jirovecii*.

Clinical Treatment Decision

A total of 1006 *P jirovecii* PCR results (99 detected, 907 not detected) and corresponding medical records were reviewed to determine if PJP treatment had been administered and/or intended. The intention to administer a full course of treatment was evident for 80 (80.8%) PCR-positive and 11 (1.2%) PCR-negative cases. Treatment was never administered in 19 (19.2%) PCR-positive cases and either never administered or discontinued in 896 (98.8%) PCR-negative cases. Among PCR-positive patients who were not treated, 2 died within 2 weeks but with syndromes not likely explained by PJP and 3 others were discharged to hospice within 60 days. Nine patients had absent or stable respiratory symptoms at follow-up (range of follow-up, 21–147 days after PCR result), of which 1 was

treated for PJP 97 days later and another was treated for PJP 179 days after the PCR result. Three specimens (2 from the same patient 12 days apart) were thought to be from residual DNA after prior PJP treatment. One patient was lost to follow-up (see [Supplementary Table 1](#) for more details).

Diagnostic Performance

There were 534 BAL specimens, 62 transbronchial biopsies, and 3 endobronchial biopsies with a pathology report available and PCR results from any specimen within 2 days ([Table 2](#)). *Pneumocystis jirovecii* PCR from BAL specimens exhibited 93.3% (95% CI, 68.1%–99.8%) sensitivity and 93.6% (95% CI, 91.2%–95.6%) specificity. Only 3 of 62 transbronchial biopsies identified *P jirovecii* by microscopic examination and the corresponding PCR was positive in all 3 of these cases.

Significance of C_T Values

Forty-seven bronchoscopy-derived specimens also had corresponding pathology examinations, and comparison based on whether *P jirovecii* was detected microscopically demonstrated a significant difference in C_T values (median [range], 21.8 [19.7–35.0] vs 33.3 [20.2–37.2]; $P < .0001$; [Figure 2A](#)). C_T value was also highly predictive of a positive histopathology result (AUC = 0.92; [Figure 2B](#)). Additional comparisons of PCR C_T values were stratified by sample type: deep respiratory sampling derived from bronchoscopy (n = 53) or mini-BAL (n = 4), and all other specimens (sputum, n = 41; endotracheal [ET] aspirate, n = 1). Among samples derived through deep sampling, C_T values were significantly different in the group that was treated compared to the group that was not treated (median [range], 30.5 [19.7–38.9] vs 33.3 [28.6–37.0]; $P = .04$; [Figure 2C](#)). The same comparison was not significantly different for sputum/ET aspirate specimens (median [range], 28.6 [19.7–38.0] vs 31.5 [27.3–33.7]; $P = .22$; [Figure 2D](#)).

There were no statistically significant differences between C_T values in groups stratified by steroid administration, length of stay less than and greater than 21 days, need for advanced respiratory support (mechanical ventilation, high-flow nasal cannula, venturi mask, or non-rebreather), or imaging features suggestive of PJP ([Figure 2C](#) and [2D](#)). Finally, subgroup analyses

in persons living with human immunodeficiency virus (HIV) ([Supplementary Figure 2](#)), transplant recipients ([Supplementary Figure 3](#)), and persons without HIV ([Supplementary Figure 4](#)) were limited by small group sizes.

Serum Biomarkers

Serum LDH was measured 2022 times among 431 unique encounters. Two hundred fifty-two PCR results representing a unique treatment decision had an LDH measurement available within 2 days. Eighty-nine pathology results were accompanied by an LDH measurement within 2 days. These LDH measurements were 77.8% (95% CI, 40.0%–97.2%) sensitive and 63.8% (95% CI, 52.2%–74.2%) specific (cutoff value 350 U/L) with AUC 0.69 with respect to pathology result ([Supplementary Table 2](#), [Supplementary Figure 5](#)). There was no correlation between C_T values and LDH measurements obtained within 2 days of PCR and comparison of C_T between groups above and below the LDH cutoff of 350 units/L ([Supplementary Figure 6](#)).

Serum BDG was measured 127 times among 105 unique encounters. Fourteen pathology results were accompanied by a serum BDG measurement within 2 days. Only 1 of these pathology results was positive for *P jirovecii* and the corresponding serum BDG was above the cutoff of 100 pg/mL. Two of 13 negative pathology results had BDG levels above the cutoff.

DISCUSSION

Due to its ubiquitous nature, PJP is a prevalent and significant opportunistic infection among immunocompromised hosts [1, 2]. Early and accurate diagnosis of PJP is crucial for favorable outcomes and prevention of inappropriate therapy and off-target antibiotic adverse events among vulnerable patients [23]. In the present study, we evaluated the diagnostic performance and clinical use of the DiaSorin Molecular PCR platform in patients suspected to have PJP. We analyzed a total of 1006 results representing unique treatment decision opportunities among 785 patients during an 18-month period. Clinical use of the DiaSorin Molecular *P jirovecii* PCR assay played a major role in decisions to treat or discontinue treatment for PJP at our institutions. Comparisons to pathology results found PCR testing

Table 2. Performance of *Pneumocystis jirovecii* Polymerase Chain Reaction With Reference to Pathology

Pathology	Positive, No. (%)	Negative, No. (%)	<i>Pneumocystis jirovecii</i> PCR			
			Sensitivity (95% CI)	Specificity (95% CI)	PPV (95% CI)	NPV (95% CI)
BAL	15	519	0.93 (.68–1.00)	0.94 (.91–.96)	0.30 (.17–.45)	1.00 (.99–1.00)
<i>P jirovecii</i> PCR ⁺	14 (93.3)	33 (6.4)
<i>P jirovecii</i> PCR [−]	1 (6.7)	486 (93.6)
Transbronchial biopsy	3	59	1.00 (.29–1.00)	0.97 (.88–1.00)	0.60 (.28–.85)	1.00
<i>P jirovecii</i> PCR ⁺	3 (100)	2 (3.4)
<i>P jirovecii</i> PCR [−]	0 (0)	57 (97)

Abbreviations: BAL, bronchoalveolar lavage; CI, confidence interval; NPV, negative predictive value; PCR, polymerase chain reaction; PPV, positive predictive value.

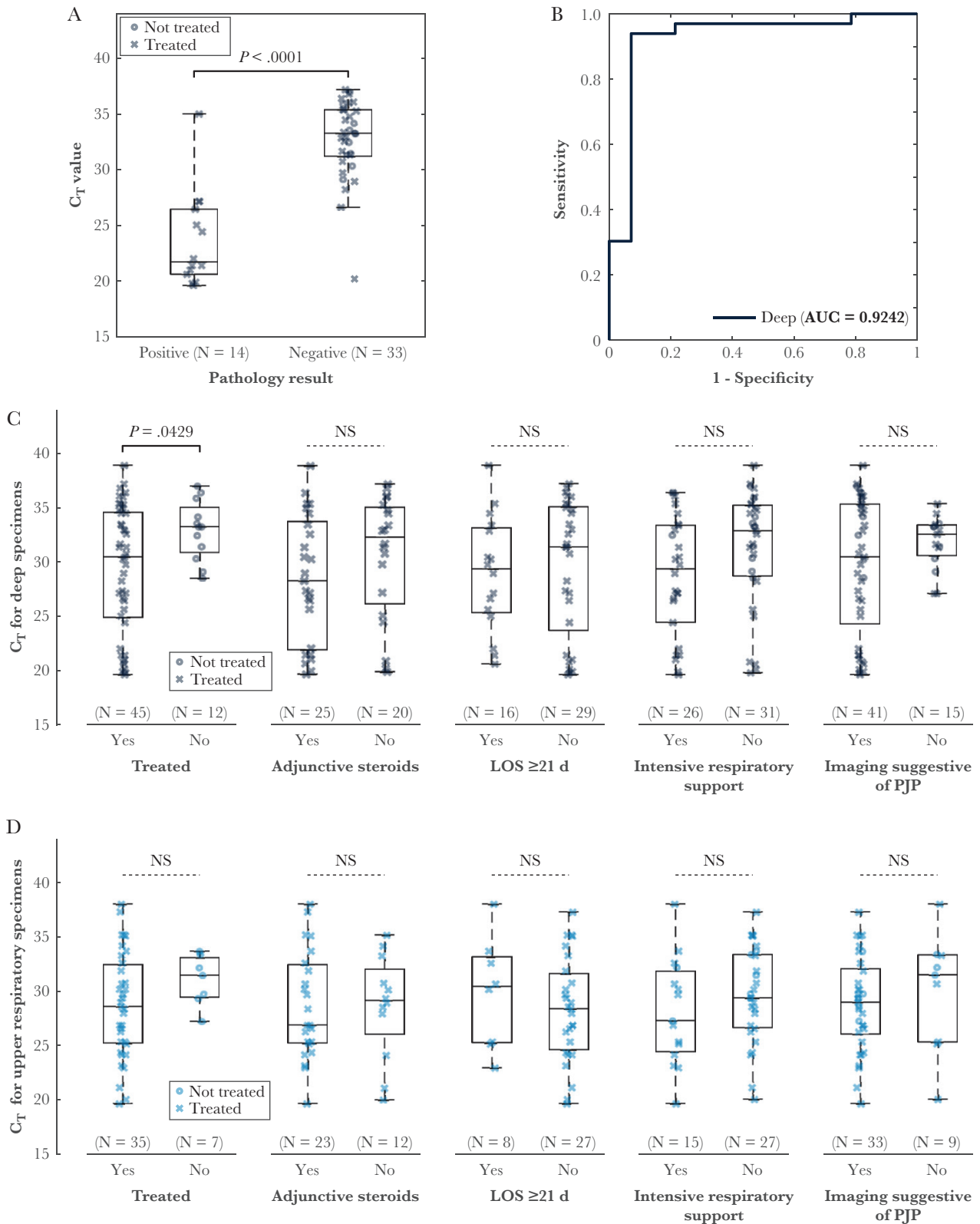


Figure 2. Boxplot (A) and receiver operating characteristic (ROC) curves (B) for cycle threshold (C_T) value from deep specimens with reference to pathology. P value determined by t test was $<.0001$ and area under the ROC curve was 0.92. C, There were significant differences in C_T values from deep respiratory specimens when polymerase chain reaction–positive cases that were treated were compared to cases that were not treated, but no significant differences were observed in use of adjunctive steroids, length of stay, need for intensive respiratory support, or imaging suggestive of *Pneumocystis jirovecii* pneumonia. D, No differences were observed in any comparison from upper respiratory specimens. Abbreviations: AUC, area under the curve; C_T , cycle threshold; LOS, length of stay; NS, not significant; PJP, *Pneumocystis jirovecii* pneumonia.

to have a moderate positive predictive value and high negative predictive value, and lower C_T values were highly predictive of positive pathology results.

Several studies report the diagnostic performance of *P jirovecii* PCR with varying reference standards. A study of 448 HIV-negative immunocompromised patients found PCR to be 100% sensitive and 90.0% specific in induced sputum and 84.0% sensitive and 92.2% specific in BAL fluid with respect to indirect fluorescent antibody staining [10]. A study of 110 specimens (primarily BAL fluid) with PCR found 92.8% sensitivity and 90.6% specificity with respect to a clinical diagnosis of PJP [11]. A meta-analysis of 16 studies that employed both clinical factors and microscopic detection as the gold standard for diagnosis determined summary sensitivity of PCR from BAL fluid to be 98.3% and specificity 91.0% [12]. Our findings are consistent with the abovementioned prior literature.

Pneumocystis jirovecii pneumonia PCR testing and subsequent results played a major role in influencing clinical decisions to initiate or discontinue PJP treatment at our intuitions. In our cohort, 14 patients were started on treatment after the PCR result was reported and either had negative pathology or did not have a pathology result. Without PCR, these represent *likely* missed cases (the clinical team would likely not have treated the patient without the positive PCR result). There were also 27 cases without pathology or with negative pathology where the PCR result and treatment initiation occurred on the same day, and therefore it was more difficult to speculate whether treatment would have been initiated if PCR was not available as a diagnostic tool. We interpreted these as *possible* missed cases. A negative PCR result in 35 of 126 (27.8%) patients who were initiated on treatment suggests that PCR facilitated discontinuation of empiric antimicrobials. The primary therapeutic agent of PJP is trimethoprim-sulfamethoxazole. Its use is associated with high rates of gastrointestinal intolerance, hyperkalemia, acute kidney injury, leukopenia, and allergic reactions [24]. Hence, limiting inappropriate therapy, especially among immunocompromised patients on polypharmacy, is of great value.

It has been proposed that quantitative PCR, by characterizing fungal burden in a respiratory specimen, may be a discriminator of active disease from colonization. A small number of studies have described the direct use of C_T values or quantitative estimation of organism number derived through reference standards [6–9, 15–21]. An overview of these studies and the assays utilized [25–28] is shown in [Supplementary Table 3](#). Collectively, these analyses are problematic: Cutoff values vary by several orders of magnitude between studies, and even those studies with good internal consistency often require identification of 2 separate cutoff values (1 with high sensitivity and 1 with high specificity). Only 1 of the studies we identified had analyzed C_T values from a commercially available assay [6]. Furthermore, recent experience with SARS-CoV-2 shows that C_T values can vary significantly between and within methods,

as demonstrated by a survey of 700 laboratories using SARS-CoV-2 proficiency testing material produced from the same batch, where within a single gene target for a single method, up to 12.0 cycle differences were seen across all laboratories [29]. The totality of this literature highlights the barriers to standardization across platforms and institutions.

We characterized the utility of *P jirovecii* PCR C_T value from the DiaSorin Molecular assay in 2 ways. First, test performance of C_T values relative to pathology demonstrated that low C_T values are highly predictive of a positive pathology result ([Figure 2A](#) and [2B](#)). Second, comparisons by *t* test revealed significant difference in distribution of C_T values from deep respiratory specimens with respect to treatment decision, although there was significant overlap. There was not significant difference in this comparison among sputum and ET aspirate specimens. Further comparisons with indicators of disease severity did not exhibit statistically significant differences. For example, while deep respiratory specimens with C_T values <25 all had imaging suggestive of PJP, many high C_T values were observed in patients with suggestive imaging while sputum/ET aspirate specimens included a few specimens near or below 25 *without* suggestive imaging. This illustrates that C_T values must be interpreted with caution.

Reasons that significant differences in C_T values were not observed in comparisons based on severity indicators may be the presence of alternative or concurrent diagnoses or factors related to specimen collection. While lower C_T values might be expected in individuals with more severe PJP, other processes causing respiratory failure, imaging features compatible with PJP, or prompting the use of steroids can confound these results. Meanwhile, specimen collection has inherent variability and can impact C_T value results. For example, fungal concentration in a liquid specimen, which would influence C_T values, is influenced by sampling technique and sample preparation. Lavage or bronchial brushing may exert different mechanical forces on the lower airways, resulting in differing yield. Fluid volume likely also influences fungal recovery as BAL technique can range from tens to hundreds of milliliters and inadequate volume may compromise recovery, whereas excess volume may dilute fungal organism and therefore influence C_T value. Sputum is produced by an inherently different process (which is why it is not compared to bronchoscopy-derived samples in this study) and may differ based on patient effort, age, and underlying lung disease and can be contaminated with saliva. Other preanalytical factors—time from collection to analysis during which DNA could degrade and sample storage conditions—as well as when in the clinical course a specimen is obtained (especially if empiric treatment has been administered) and degree of host immune suppression also likely influence organism burden and impact the C_T value.

Ultimately, histopathological examination does not perfectly represent ground truth for PJP diagnosis. It appears true from our experience that histopathological examination is not

perfectly sensitive. Compared to the serum biomarker LDH, however, PCR appears to be more sensitive and specific. There were limited data for drawing conclusions about the performance of serum BDG. We do not present diagnostic performance with respect to clinical treatment decision because this is inherently flawed and may be influenced by clinician knowledge of the C_T value (which is occasionally requested by the infectious diseases consultant) and the experience or expertise of the clinical teams making a treatment decision. Prospective adjudication in real time by clinicians experienced with the diagnosis of PJP and blinded to the PCR result may be a better approximation of ground truth.

These results demonstrate that data from additional studies are necessary to guide the clinician in proper use of C_T value from *Pneumocystis* PCR. Platform and assay variability in PCR results across laboratories necessitates familiarity with data from within one's own institution if C_T values are to be used at all. Our analysis suggests that C_T values may be most useful in a clinical scenario where pathology examination is limited (eg, poor sample quality) and a low C_T value may prompt commitment to treatment. Our experience presented here suggests that negative PCR, but not high C_T values in a PCR-positive individual, might be used to "rule out" PJP.

In summary, we found *P jirovecii* PCR to be a highly impactful tool in the diagnosis and management of PJP, and use of C_T values may have value in the treatment decision process under select circumstances.

Supplementary Data

Supplementary materials are available at *Open Forum Infectious Diseases* online. Consisting of data provided by the authors to benefit the reader, the posted materials are not copyedited and are the sole responsibility of the authors, so questions or comments should be addressed to the corresponding author.

Notes

Patient consent. This study was designated as a quality improvement project by the Institutional Review Board at Emory University and therefore did not require patient written consent.

Potential conflicts of interest. C. S. K. has served on the advisory board for Rebiotix/Ferring. All other authors report no potential conflicts of interest.

The authors have submitted the ICMJE Form for Disclosure of Potential Conflicts of Interest. Conflicts that the editors consider relevant to the content of the manuscript have been disclosed.

References

1. Avino LJ, Naylor SM, Roecker AM. *Pneumocystis jirovecii* pneumonia in the non-HIV-infected population. *Ann Pharmacother* **2016**; 50:673–9.
2. Siegel M, Masur H, Kovacs J. *Pneumocystis jirovecii* pneumonia in human immunodeficiency virus infection. *Semin Respir Crit Care Med* **2016**; 37:243–56.
3. Bateman M, Oladele R, Kolls JK. Diagnosing *Pneumocystis jirovecii* pneumonia: a review of current methods and novel approaches. *Med Mycol* **2020**; 58:1015–28.
4. Procop GW, Haddad S, Quinn J, et al. Detection of *Pneumocystis jirovecii* in respiratory specimens by four staining methods. *J Clin Microbiol* **2004**; 42:3333–5.
5. Cadranet J, Gillet-Juvin K, Antoine M, et al. Site-directed bronchoalveolar lavage and transbronchial biopsy in HIV-infected patients with pneumonia. *Am J Respir Crit Care Med* **1995**; 152:1103–6.

6. Hoarau G, Le Gal S, Zunic P, et al. Evaluation of quantitative FTD-*Pneumocystis jirovecii* kit for *Pneumocystis* infection diagnosis. *Diagn Microbiol Infect Dis* **2017**; 89:212–7.
7. Fauchier T, Hasseine L, Gari-Toussaint M, Casanova V, Marty PM, Pomares C. Detection of *Pneumocystis jirovecii* by quantitative PCR to differentiate colonization and pneumonia in immunocompromised HIV-positive and HIV-negative patients. *J Clin Microbiol* **2016**; 54:1487–95.
8. Damiani C, Le Gal S, Da Costa C, Virmaux M, Nevez G, Totet A. Combined quantification of pulmonary *Pneumocystis jirovecii* DNA and serum (1->3)-D-glucan for differential diagnosis of *Pneumocystis* pneumonia and *Pneumocystis* colonization. *J Clin Microbiol* **2013**; 51:3380–8.
9. Alanio A, Desoubeaux G, Sarfati C, et al. Real-time PCR assay-based strategy for differentiation between active *Pneumocystis jirovecii* pneumonia and colonization in immunocompromised patients. *Clin Microbiol Infect* **2011**; 17:1531–7.
10. Azoulay E, Bergeron A, Chevret S, Bele N, Schlemmer B, Menotti J. Polymerase chain reaction for diagnosing *Pneumocystis* pneumonia in non-HIV immunocompromised patients with pulmonary infiltrates. *Chest* **2009**; 135:655–61.
11. Hauser PM, Bille J, Lass-Flörl C, et al. Multicenter, prospective clinical evaluation of respiratory samples from subjects at risk for *Pneumocystis jirovecii* infection by use of a commercial real-time PCR assay. *J Clin Microbiol* **2011**; 49:1872–8.
12. Fan LC, Lu HW, Cheng KB, Li HP, Xu JF. Evaluation of PCR in bronchoalveolar lavage fluid for diagnosis of *Pneumocystis jirovecii* pneumonia: a bivariate meta-analysis and systematic review. *PLoS One* **2013**; 8:e73099.
13. Esteves F, Cale SS, Badura R, et al. Diagnosis of *Pneumocystis* pneumonia: evaluation of four serologic biomarkers. *Clin Microbiol Infect* **2015**; 21:379 e1–10.
14. Bateman M, Oladele R, Kolls JK. Diagnosing *Pneumocystis jirovecii* pneumonia: a review of current methods and novel approaches. *Med Mycol* **2020**; 58:1015–28.
15. Perret T, Kritikos A, Hauser PM, et al. Ability of quantitative PCR to discriminate *Pneumocystis jirovecii* pneumonia from colonization. *J Med Microbiol* **2020**; 69:705–11.
16. Louis M, Guitard J, Jodar M, et al. Impact of HIV infection status on interpretation of quantitative PCR for detection of *Pneumocystis jirovecii*. *J Clin Microbiol* **2015**; 53:3870–5.
17. Mailet M, Maubon D, Brion JP, et al. *Pneumocystis jirovecii* (Pj) quantitative PCR to differentiate Pj pneumonia from Pj colonization in immunocompromised patients. *Eur J Clin Microbiol Infect Dis* **2014**; 33:331–6.
18. Matsumura Y, Ito Y, Iinuma Y, et al. Quantitative real-time PCR and the (1 → 3)-β-D-glucan assay for differentiation between *Pneumocystis jirovecii* pneumonia and colonization. *Clin Microbiol Infect* **2012**; 18:591–7.
19. Botterel F, Cabaret O, Foulet F, Cordonnier C, Costa JM, Bretagne S. Clinical significance of quantifying *Pneumocystis jirovecii* DNA by using real-time PCR in bronchoalveolar lavage fluid from immunocompromised patients. *J Clin Microbiol* **2012**; 50:227–31.
20. Fillaux J, Malvy S, Alvarez M, et al. Accuracy of a routine real-time PCR assay for the diagnosis of *Pneumocystis jirovecii* pneumonia. *J Microbiol Methods* **2008**; 75:258–61.
21. Flori P, Bellet B, Durand F, et al. Comparison between real-time PCR, conventional PCR and different staining techniques for diagnosing *Pneumocystis jirovecii* pneumonia from bronchoalveolar lavage specimens. *J Med Microbiol* **2004**; 53:603–7.
22. Kilic A, Elliott S, Hester L, Palavecino E. Evaluation of the performance of DiaSorin molecular *Pneumocystis jirovecii*-CMV multiplex real-time PCR assay from bronchoalveolar lavage samples. *J Mycol Med* **2020**; 30:100936.
23. Asai N, Motojima S, Ohkuni Y, et al. Early diagnosis and treatment are crucial for the survival of *Pneumocystis* pneumonia patients without human immunodeficiency virus infection. *J Infect Chemother* **2012**; 18:898–905.
24. Martin SI, Fishman JA; Practice AST Infectious Diseases Community of Practice. *Pneumocystis* pneumonia in solid organ transplantation. *Am J Transplant* **2013**; 13(Suppl 4):272–9.
25. Richard S, Almeida JMGCF, Cissé OH, et al. Functional and expression analyses of the *Pneumocystis* MAT genes suggest obligate sexuality through primary homothallism within host lungs. *mBio* **2018**; 9:e02201–17.
26. Meliani L, Develoux M, Marteau-Miltgen M, et al. Real time quantitative PCR assay for *Pneumocystis jirovecii* detection. *J Eukaryot Microbiol* **2003**; 50:651.
27. Larsen HH, Masur H, Kovacs JA, et al. Development and evaluation of a quantitative, touch-down, real-time PCR assay for diagnosing *Pneumocystis carinii* pneumonia. *J Clin Microbiol* **2002**; 40:490–4.
28. Chumpitazi BFF, Flori P, Kern J-B, et al. Characteristics and clinical relevance of the quantitative touch-down major surface glycoprotein polymerase chain reaction in the diagnosis of *Pneumocystis* pneumonia. *Med Mycol* **2011**; 1:10.
29. Rhoads D, Peaper DR, She RC, et al. College of American Pathologists (CAP) Microbiology Committee perspective: caution must be used in interpreting the cycle threshold (Ct) value. *Clin Infect Dis* **2021**; 72:e685–6.