

RESEARCH ARTICLE

Cholic Acid Induces a *Cftr* Dependent Biliary Secretion and Liver Growth Response in Mice

Frank A. J. A. Bodewes^{1*}, Marcel J. Bijvelds², Willemien de Vries¹, Juul F. W. Baller¹, Annette S. H. Gouw³, Hugo R. de Jonge², Henkjan J. Verkade¹

1 Department of Pediatrics, University of Groningen, Beatrix Children's Hospital—University Medical Center, Groningen, The Netherlands, **2** Department of Gastroenterology & Hepatology, Erasmus University Medical Center, Rotterdam, The Netherlands, **3** Department of Pathology, University Medical Center, Groningen, The Netherlands

* f.a.j.a.bodewes@umcg.nl

Abstract

The cause of Cystic fibrosis liver disease (CFLD), is unknown. It is well recognized that hepatic exposure to hydrophobic bile salts is associated with the development of liver disease. For this reason, we hypothesize that, CFTR dependent variations, in the hepatic handling of hydrophobic bile salts, are related to the development CFLD. To test our hypothesis we studied, in *Cftr*^{-/-} and control mice, bile production, bile composition and liver pathology, in normal feeding condition and during cholate exposure, either acute (intravenous) or chronic (three weeks via the diet). In *Cftr*^{-/-} and control mice the basal bile production was comparable. Intravenous taurocholate increased bile production to the same extent in *Cftr*^{-/-} and control mice. However, chronic cholate exposure increased the bile flow significantly less in *Cftr*^{-/-} mice than in controls, together with significantly higher biliary bile salt concentration in *Cftr*^{-/-} mice. Prolonged cholate exposure, however, did not induce CFLD like pathology in *Cftr*^{-/-} mice. Chronic cholate exposure did induce a significant increase in liver mass in controls that was absent in *Cftr*^{-/-} mice. Chronic cholate administration induces a cystic fibrosis-specific hepatobiliary phenotype, including changes in bile composition. These changes could not be associated with CFLD like pathological changes in CF mouse livers. However, chronic cholate administration induces liver growth in controls that is absent in *Cftr*^{-/-} mice. Our findings point to an impaired adaptive homeotrophic liver response to prolonged hydrophobic bile salt exposure in CF conditions.



OPEN ACCESS

Citation: Bodewes FAJA, Bijvelds MJ, de Vries W, Baller JFW, Gouw ASH, de Jonge HR, et al. (2015) Cholic Acid Induces a *Cftr* Dependent Biliary Secretion and Liver Growth Response in Mice. PLoS ONE 10(2): e0117599. doi:10.1371/journal.pone.0117599

Academic Editor: Carlos M Rodriguez-Ortigosa, CIMA. University of Navarra, SPAIN

Received: September 11, 2013

Accepted: December 29, 2014

Published: February 13, 2015

Copyright: © 2015 Bodewes et al. This is an open access article distributed under the terms of the [Creative Commons Attribution License](https://creativecommons.org/licenses/by/4.0/), which permits unrestricted use, distribution, and reproduction in any medium, provided the original author and source are credited.

Funding: The authors have no support or funding to report.

Competing Interests: The authors have declared that no competing interests exist.

Introduction

Cystic fibrosis (CF) is caused by mutations in the CFTR gene [1,2]. Cystic fibrosis liver disease (CFLD) develops in 5–10% of cystic fibrosis patients [3]. It is a serious complication of CF [4,5]. CFLD is characterized by cirrhosis and patients often present with splenomegaly, hypervolemism and complications of portal hypertension, including variceal bleeding and ascites [6,7]. Although the synthesis and excretory functions of the liver are usually spared, liver

transplantation can be indicated in some CFLD patients [8]. Despite major advances in basic knowledge about cystic fibrosis, the pathogenesis of CFLD is still unknown.

In the liver, CFTR is expressed exclusively at the apical membrane of the cholangiocytes lining the bile ducts [9,10]. In cholangiocytes, CFTR facilitates the water secretion and the pH of bile [11,12]. Consequently, loss of CFTR function may increase the concentration of the potentially cytotoxic bile salts in bile, leading to damage and occlusion of small bile ducts and, ultimately, obstructive biliary cirrhosis [13–15].

CF mice may show minor gallbladder and liver abnormalities that, spontaneously, do not lead to loss of liver function or CFLD like pathology [16–19]. Compared to humans, mice produce bile with relatively hydrophilic bile salts [20]. Hydrophilic bile salts are considered less cytotoxic than hydrophobic ones, which have been associated with the development of liver disease [21,22]. The hydrophilic profile of murine bile could prevent or mitigate liver disease in CF mice.

We speculate that, *Cftr* dependent variations, in the hepatic handling of hydrophobic bile salts, might be related to the development of CFLD. To test this hypothesis in mice, we sought to change the composition of murine bile to one containing more hydrophobic bile salts. Therefore, we challenged CF mice, acutely and chronically, with cholic acid (CA), a relatively hydrophobic bile salt with strong detergent activity, and monitored effects on bile production, bile composition, hepatic gene expression, serum alanine transaminase (ALT) levels, liver weight and liver histology [22].

Materials and Methods

Animals

We used C57Bl/6;129 *Cftr*^{-/-tm1CAM} mice and *Cftr*^{+/+tm1CAM} littermate controls. In one additional experiment, we use homozygous F508del *Cftr* mice (*Cftr*^{tm1EUR}) mice and littermate controls. All mice were bred and accommodated at the Animal Experimental Center of the Erasmus Medical Center in Rotterdam, The Netherlands [16]. Mice were housed in a light-controlled (lights on 6 AM to 6 PM) and temperature-controlled (21°C) facility, and had free access to tap water and a semi-synthetic diet (SRM-A; Hope Farms BV Woerden, The Netherlands) from the time of weaning. All experiments were performed with mice of 10–20 weeks of age. Group size varied per experiment, based on breeding success. We used a minimum number of five mice per experimental group. Experimental protocols were approved by the Ethical Committee for Animal Experiments of Erasmus MC. All surgery was performed under sodium pentobarbital anesthesia, and all efforts were made to minimize suffering.

Experimental procedures

To test our hypothesis we used a murine gall bladder cannulation model [23,24]. Bile was collected after surgical ligation of the common bile duct and cannulation of the gall bladder using polyethylene tubing under intraperitoneal anesthesia with hypnorm (fentanyl/fluanisone 1 µl/g BW) and diazepam (10 µg/g BW). The animals were placed in a temperature and humidity controlled incubator. Bile secretions were collected in 15 or 30 minute fractions. Bile flow rate was assessed gravimetrically, assuming a density of 1g/ml. [23,25].

We first applied acute bile salt infusion, as previously described [25]. After gall bladder cannulation, we infused taurine-conjugated cholate (TCA) (43 mM dissolved in phosphate-buffered saline, pH 7.4) via the jugular vein using an infusion pump. The bile salt dosage was increased every 30 minutes in a stepwise manner (dosage steps 0, 150, 300, 450 and 600 nmol.min⁻¹). Bile was collected in 15 minutes fractions.

Different groups of *Cftr*^{-/-} and control mice were either fed the control diet, composed of standard chow or the bile salt diet, composed of standard chow enriched with cholate (CA 0.5% wt/wt), for three weeks. An additional group of *Cftr*^{-/-} and control mice were fed the CA enriched diet for three months. After gallbladder cannulation as described above, bile production was determined by bile collection for 30 minutes. The bile was collected for analysis. Mice were then sacrificed by obtaining a large blood sample via cardiac puncture, followed by cervical dislocation. The liver was excised and weighed, after which samples were either immersed in neutral buffered formalin or stored in liquid nitrogen.

Analytical techniques

Biliary bile salt concentrations were determined by enzymatic fluorometric assay [26]. Lipids were extracted from the bile [27]. The phospholipid concentrations were determined using a spectrophotometric assay [28]. Biliary bile salt composition was determined by capillary gas chromatography [29]. The hydrophobicity of bile salts in bile was calculated according to the Heuman index, based on the fractional contribution of the major bile salt species [22]. ALT was determined in plasma samples.

RNA was isolated from whole liver for quantitative real time polymerase chain reactions (qRT-PCR) performed on a 7900HT Fast Real-Time PCR system (Applied Biosystems).

For histological analysis of the liver samples, hematoxylin/eosin staining was applied on paraffin embedded sections. To quantify mitotic active cells we used Ki-67 immunostaining using a rabbit anti Ki-67p monoclonal antibody (Novocastra Laboratories Ltd., Newcastle upon Tyne, UK) [30]. An experienced hepato-pathologist (A.S.H.G.) assessed the liver samples in a blinded fashion. Histology of the liver parenchyma and portal tracts were evaluated separately for inflammation, fibrosis, and Ki-67 mitotic activity. The score was performed in a semi-quantitative approach on a scale from 0 to 3 (0: absent, 1: sporadic, 2: regular, 3: frequent) [31].

Statistical analysis

The statistical analysis was performed using SPSS version 18.0 for Windows (SPSS Inc., Chicago, IL). All numerical results are reported as means \pm SEM. The ordinal histology results are reported as medians and range. Differences between study groups were evaluated using the Mann-Whitney U test. The level of significance was set at a P value of less than 0.05.

Results

Bile production and bile salt secretion after interruption of the enterohepatic circulation

Bile production, assessed over 30 minutes immediately after interruption of the enterohepatic circulation, did not differ significantly between *Cftr*^{-/-} mice and controls (mean of 2 15 min points in first 30 minutes: 6.3 ± 0.7 vs. $5.8 \pm 0.5 \mu\text{l} \cdot \text{min}^{-1} \cdot 100 \text{g}^{-1}$, respectively; Fig. 1A). Bile salt concentrations and bile salt secretion rates were also similar between *Cftr*^{-/-} mice and controls under these untreated conditions (Fig. 1B and C).

Bile production and bile salt secretion during acute IV taurocholic acid (TCA) administration

Administration of TCA (IV) dose-dependently increased bile production (Fig. 1A). The dose-response relationship was similar for *Cftr*^{-/-} mice and controls, indicating that bile production was not impaired in CF mice. Also, a similar, concomitant dose-dependent increase in bile salt concentrations and secretion rates was observed during TCA infusion, in *Cftr*^{-/-} mice and

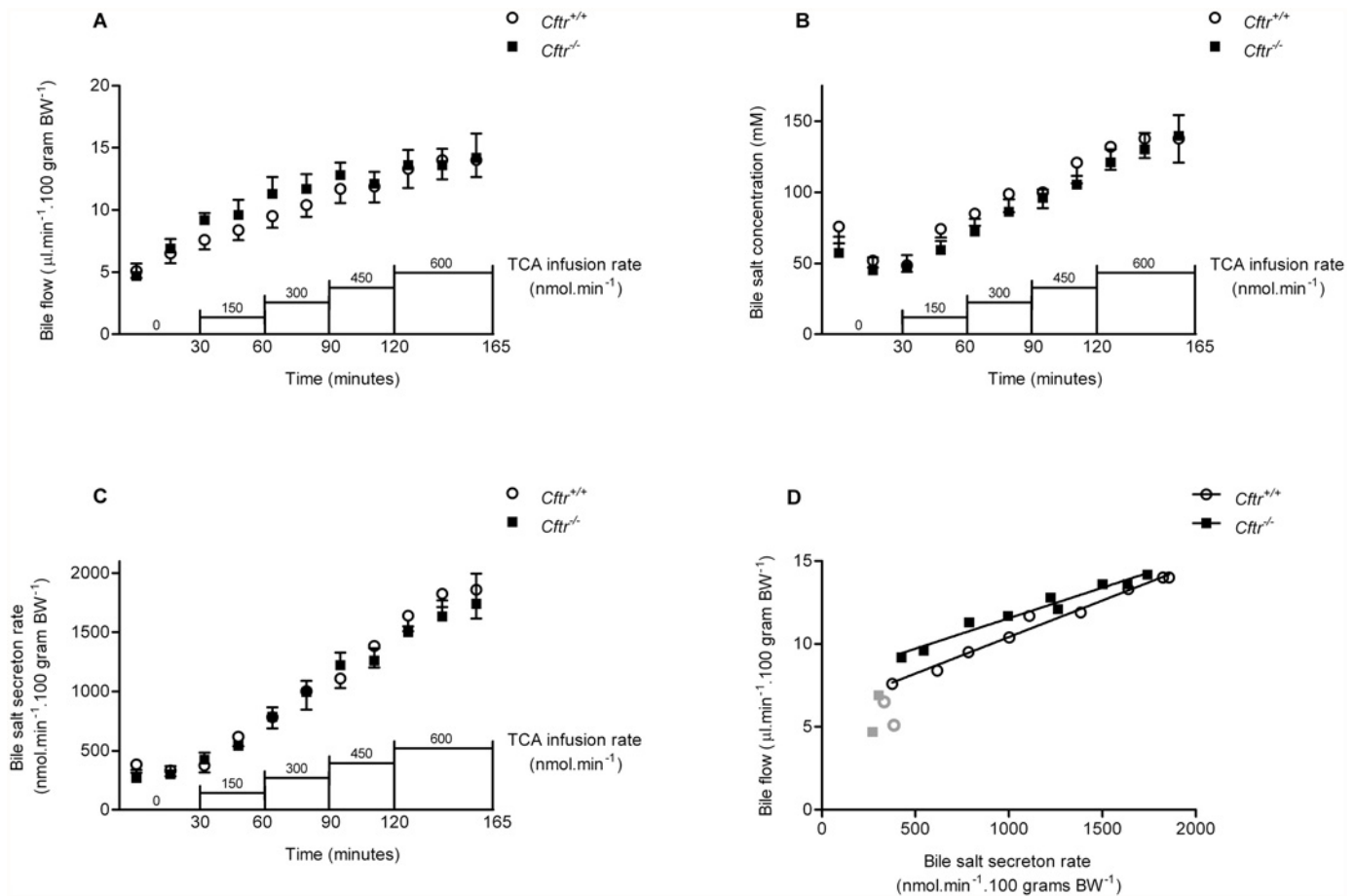


Fig 1. Biliary parameters during intravenous taurocholic acid (TCA) administration. Biliary bile flow (A), bile salt concentration (B), bile salt secretion rate (C) and relationship between bile salt secretion rate and bile flow (D) in *Cfr* knockout mice (*Cfr*^{-/-}) and control littermates (*Cfr*^{+/+}) during intravenous infusion with TCA in stepwise increasing dosage of. The gray symbols in (D) represent baseline values before the start of TCA infusion. Data are presented as means ± SEM of N = 5–7 mice per group. There was no significant difference between *Cfr*^{-/-} and *Cfr*^{+/+} mice, at any of the individual time points, for bile flow, bile salt concentration and bile salt secretion rate (regression lines: *Cfr*^{-/-}: $y = 0.0044x + 7.9$ vs. *Cfr*^{+/+}: $y = 0.0037x + 6.0$).

doi:10.1371/journal.pone.0117599.g001

controls (Fig. 1B and C). The bile salt secretion rate was linearly correlated with the bile flow (Fig. 1D), with similar slopes in *Cfr*^{-/-} and control mice, indicating similar magnitudes of bile salt dependent bile flow. These observations strongly suggested that the bile flow in mice, both under basal conditions and after acute IV TCA administration, is predominantly generated via *Cfr* independent mechanisms.

Bile production and bile salt composition during chronic cholic acid (CA) feeding

Feeding a CA containing diet for three weeks increased bile flow in *Cfr*^{-/-} mice and controls (Fig. 2A). However, the increase was significantly more pronounced in controls than in *Cfr*^{-/-} mice. The CA diet increased the biliary bile salt concentration in *Cfr*^{-/-} mice but not in controls (Fig. 2B). Chronic CA feeding increased the bile salt secretion rate in *Cfr*^{-/-} mice and controls. However, the bile salt secretion rate, during CA diet was not significantly different between *Cfr*^{-/-} mice and controls (Fig. 2C).

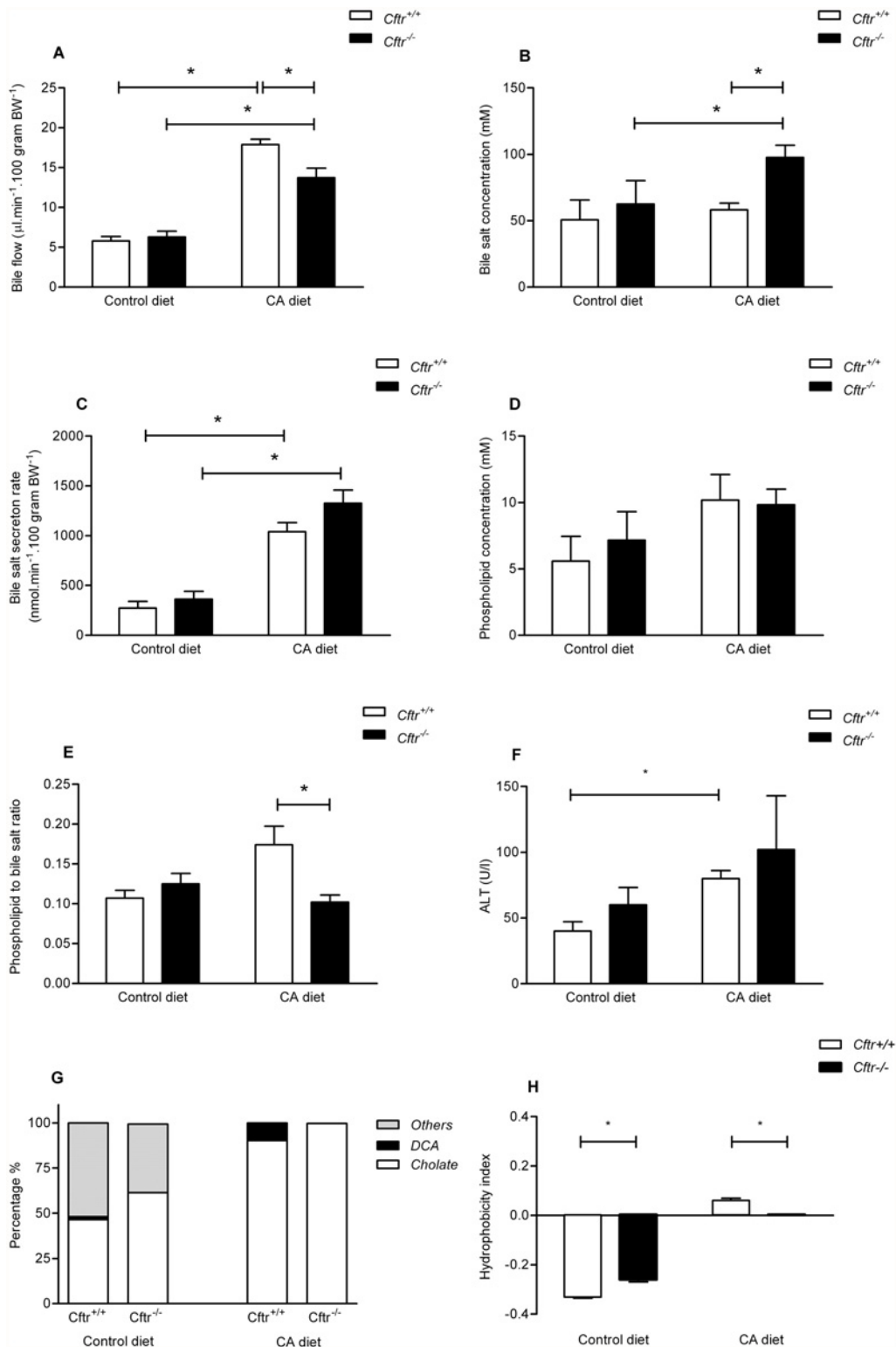


Fig 2. Biliary parameters and bile composition of *Cfr* knockout mice (*Cfr*^{-/-}) and controls, fed a control diet or a cholic acid (CA) containing diet for 3 weeks. Biliary bile flow (A), bile salt concentration (B), bile salt secretion rate (C), phospholipid concentration (D), phospholipid-to-bile salt ratio (E), serum ALT levels (F), percent contribution to total biliary bile salts of cholates, deoxycholates and others (chenodeoxycholates, ursodeoxycholates, α -muricholates and β -muricholates) (G), and, Heuman index of biliary bile salts representing the hydrophobicity (H), in *Cfr* knockout mice (*Cfr*^{-/-}) and control littermates (*Cfr*^{+/+}) after a control or 0.5%-CA (wt/wt) chow diet for three weeks. Data are presented as means \pm SEM or percentage (panel G) of N = 5–7 mice per group. *P-value < 0.05.

doi:10.1371/journal.pone.0117599.g002

To assess cytotoxicity, we measured the biliary phospholipid concentration and calculated the phospholipid-to-bile salt ratio. During regular chow feeding (control diet), biliary phospholipid concentrations were similar in *Cftr*^{-/-} mice and controls (Fig. 2D), as were the phospholipid to bile salt ratios (Fig. 2E). CA feeding seemed to increase phospholipid concentrations, both in *Cftr*^{-/-} and controls, but the differences between the diets did not reach statistical significance (Fig. 2D). Also, the phospholipid concentration did not significantly differ between *Cftr*^{-/-} and control mice on either diet. CA administration increased the phospholipid to bile salt ratio only in control mice (Fig. 2E). On control diet, serum ALT levels were similar in *Cftr*^{-/-} and control mice (Fig. 2F). CA feeding slightly, but significantly, increased serum ALT in control mice suggestive for minor hepatocyte injury. Also ALT levels also increased in *Cftr*^{-/-} mice upon the CA diet, but this was statistically not significant.

As anticipated, the biliary bile salt compositions in *Cftr*^{-/-} and control mice were relatively hydrophilic (i.e. negative Heuman indices), upon feeding the control diet (Fig. 2H). Even at these control conditions, however, the hydrophobicity index was significantly higher in *Cftr*^{-/-} mice compared with controls (-0.33 vs. -0.26; respectively, $P < 0.01$). The higher hydrophobicity index could be attributed mainly to a higher fractional CA content in *Cftr*^{-/-} mice (Fig. 2G). The CA diet markedly increased the fractional contribution of CA to the total biliary bile salt pool in both groups. In control mice, the CA contribution increased to ~90% whereas it was even close to 100% in *Cftr*^{-/-} mice. In the control mice, the remaining 10% consisted predominantly of the secondary bile salt deoxycholic acid. Since DCA is a more hydrophobic bile salt than CA, the hydrophobicity index of the bile, after prolonged CA exposure, was higher in controls than in *Cftr*^{-/-} mice (0.06 vs. 0.00, respectively, $P < 0.01$, Fig. 2H).

Hydrophobic bile salts are regarded as strong ligands for the nuclear receptor Fxr, which is, among other functions, also involved in bile acid synthesis regulation. The observed significant difference in DCA proportion upon CA treatment could correspond with differences in bile synthesis rates between the genotypes. To address this possibility, we determined the mRNA expression of hepatic *Cyp7a1*, encoding the rate-limiting enzyme in bile salt synthesis from cholesterol. During normal diet, the hepatic expression of *Cyp7a1* was similar in *Cftr*^{-/-} and control mice. After prolonged CA exposure, however, the *Cyp7a1* expression was completely suppressed in control mice, but unaffected in *Cftr*^{-/-} mice (Fig. 3A and B).

Cftr dependent effects of chronic CA exposure on liver weight

In accordance with earlier reports, *Cftr*^{-/-} mice tended to a lower body weight as littermate controls (Fig. 4A) [32]. CA feeding did not markedly affect body weight, but nevertheless, the difference between the two genotypes now was significant. On control diet, *Cftr*^{-/-} and control mice had similar absolute and relative liver weights (Fig. 4C and 4E). Chronic CA administration increased the absolute and relative liver weight in controls (+52%, $p < 0.001$), but did not affect either in *Cftr*^{-/-} mice (Fig. 4C and 4E). We also observed the absence of CA-induced liver growth response in mice expressing mutant *Cftr* (homozygous F508del *Cftr* mice; *Cftr*^{tm1EUR}), in contrast to their wild type littermates (Fig. 4B, 4D and 4E) [33]. The combined observations indicate that chronic CA exposure induces liver growth, in different mouse strains, but does require functional *Cftr* expression.

Cftr dependent effects of chronic CA exposure on liver histology

On control diet, parenchymal cell proliferation was enhanced in *Cftr*^{-/-} mice, relative to controls (Fig. 5C), but no signs of parenchymal inflammation were evident. Chronic CA administration increased parenchymal mitotic activity in controls to a level similar to that found in *Cftr*^{-/-} mice on either regular chow or after chronic CA exposure. Concomitantly, three week

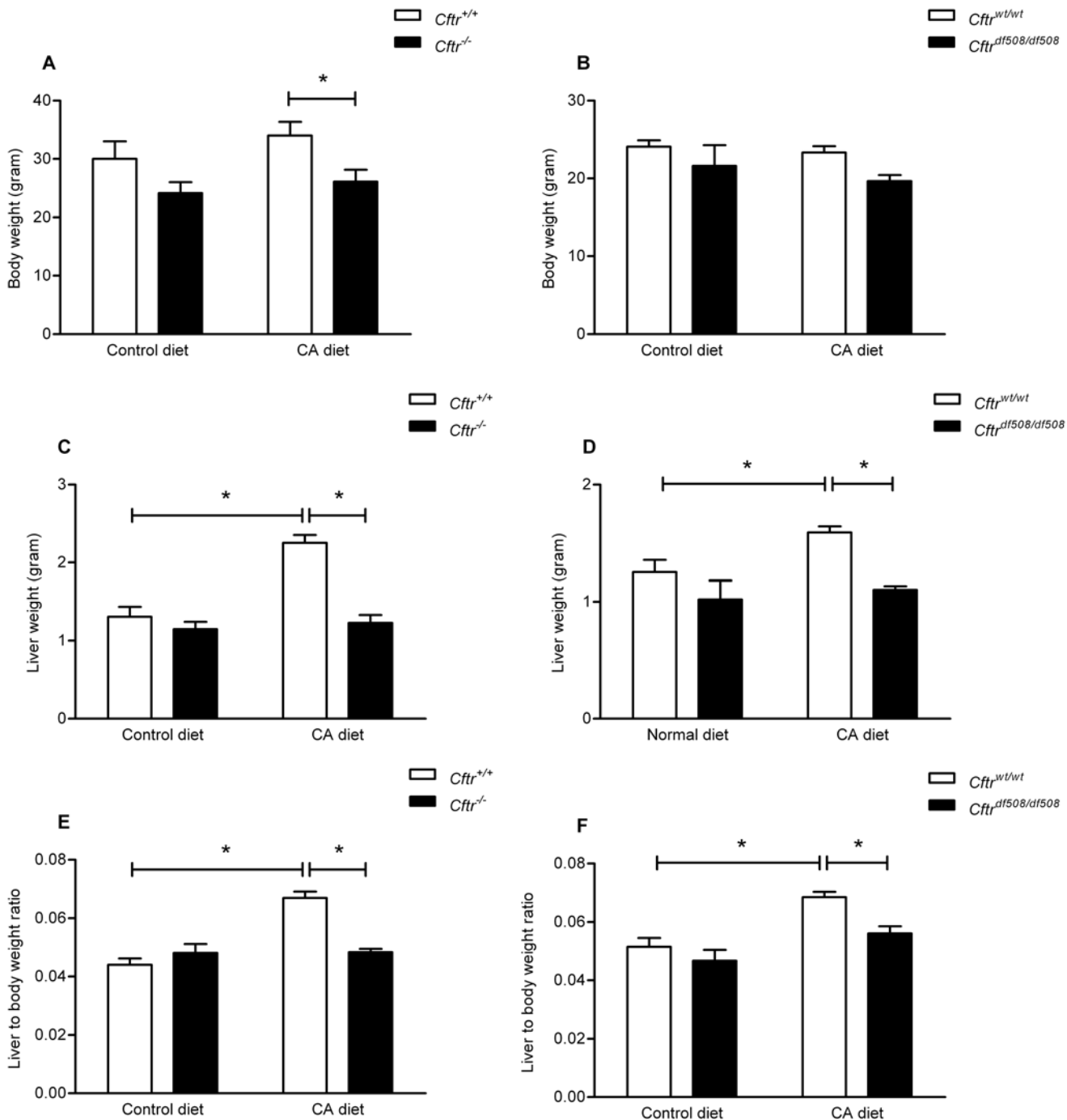


Fig 3. Hepatic Cyp7a1 mRNA expression *Cfr* knockout mice (*Cfr*^{-/-}) and controls, fed a control diet or a cholic acid (CA) containing diet for 3 weeks. Hepatic Cyp7a1 mRNA expression after a control (A) or 0.5%-CA (wt/wt) chow diet (B) for three weeks. Cyp7a1 mRNA levels were normalized to a housekeeping gene (β -actin) in *Cfr* knockout mice (*Cfr*^{-/-}) and control littermates (*Cfr*^{+/+}). Data are presented as means \pm SEM of N = 5–7 mice per group. *P-value < 0.05.

doi:10.1371/journal.pone.0117599.g003

CA feeding significantly increased the parenchymal inflammation score in controls (Fig. 5D). Prolonged CA exposure (three months) further increased parenchymal mitotic activity and inflammation, particularly observed in controls. CA feeding did not generate pathological changes in the portal tract areas of *Cfr*^{-/-} or control mice (Fig. 5A and C). Fig. 6 shows

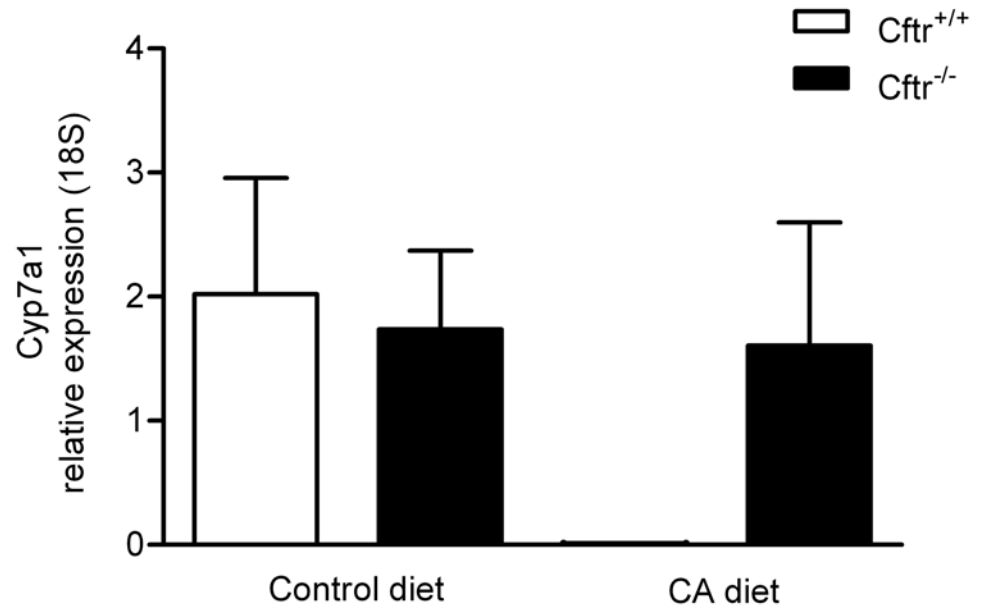


Fig 4. Body and liver weights in *Cftr* knockout, Δ F508 *Cftr* and control mice, fed a control diet or a cholic acid (CA) containing diet for 3 weeks. Body weight (A, B), absolute liver weight (C,D) and relative liver weight reported as a percentage of the body weight (E, F) in *Cftr* knockout mice (*Cftr*^{-/-}, panels A, C and E) or Δ F508 *Cftr* mice (*Cftr* ^{Δ m1EUR}, panels B, D and F) and their respective control littermates (*Cftr*^{+/+}), after a control or 0.5%-CA (wt/wt) chow diet for three weeks. Data are presented as means \pm SEM of N = 5–7 mice per group. *P-value < 0.05.

doi:10.1371/journal.pone.0117599.g004

representative images of liver histology after control and three weeks CA diet (panel A-D: HE staining and panel E-H: Ki67 staining).

Discussion

In *Cftr*^{-/-} mice, both acute and chronic hydrophobic bile salt administration markedly increased biliary bile salt production and flow rates. However, *Cftr*^{-/-} mice showed a reduced capacity to adapt to chronic hydrophobic bile salt exposure, compared with control mice. Although biliary bile salt production was similar in *Cftr*^{-/-} and control mice, the increase in bile flow was significantly less pronounced in the former. The reduced capacity, of the *Cftr*^{-/-} mice, to increase bile flow, during prolonged hydrophobic bile salt administration, resulted in significantly higher bile salt concentrations in bile. Interestingly, acute intravenous bile salt administration did not induce similar differences between *Cftr*^{-/-} and control mice, indicating that only adaptations to prolonged hydrophobic bile salt exposure are perturbed in CF.

Prolonged CA exposure did not result in CFLD like, histopathology in *Cftr*^{-/-} mice, despite their higher biliary bile salt concentration and lower bile salt to phospholipids ratio. These results make it unlikely that hydrophobic bile salt cytotoxicity underlies the pathogenesis of CFLD. During normal feeding conditions, the hydrophobicity index of bile of *Cftr*^{-/-} mice was slightly higher than in control mice, due to an increased proportion of cholate. In contrast, however, the hydrophobicity index of bile was lower than in controls after prolonged CA exposure. The lower hydrophobicity in *Cftr*^{-/-} mice, after prolonged CA exposure, was due to a higher contribution of the hydrophobic secondary bile salt DCA in the control mice. DCA is exclusively formed from CA by the intestinal bacterial microflora [34–36]. From these findings we suggest that *Cftr* dependent alterations in the intestinal, bacterial biotransformation of bile salts are responsible for the different biliary bile salt composition and hydrophobicity in CF mice conditions.

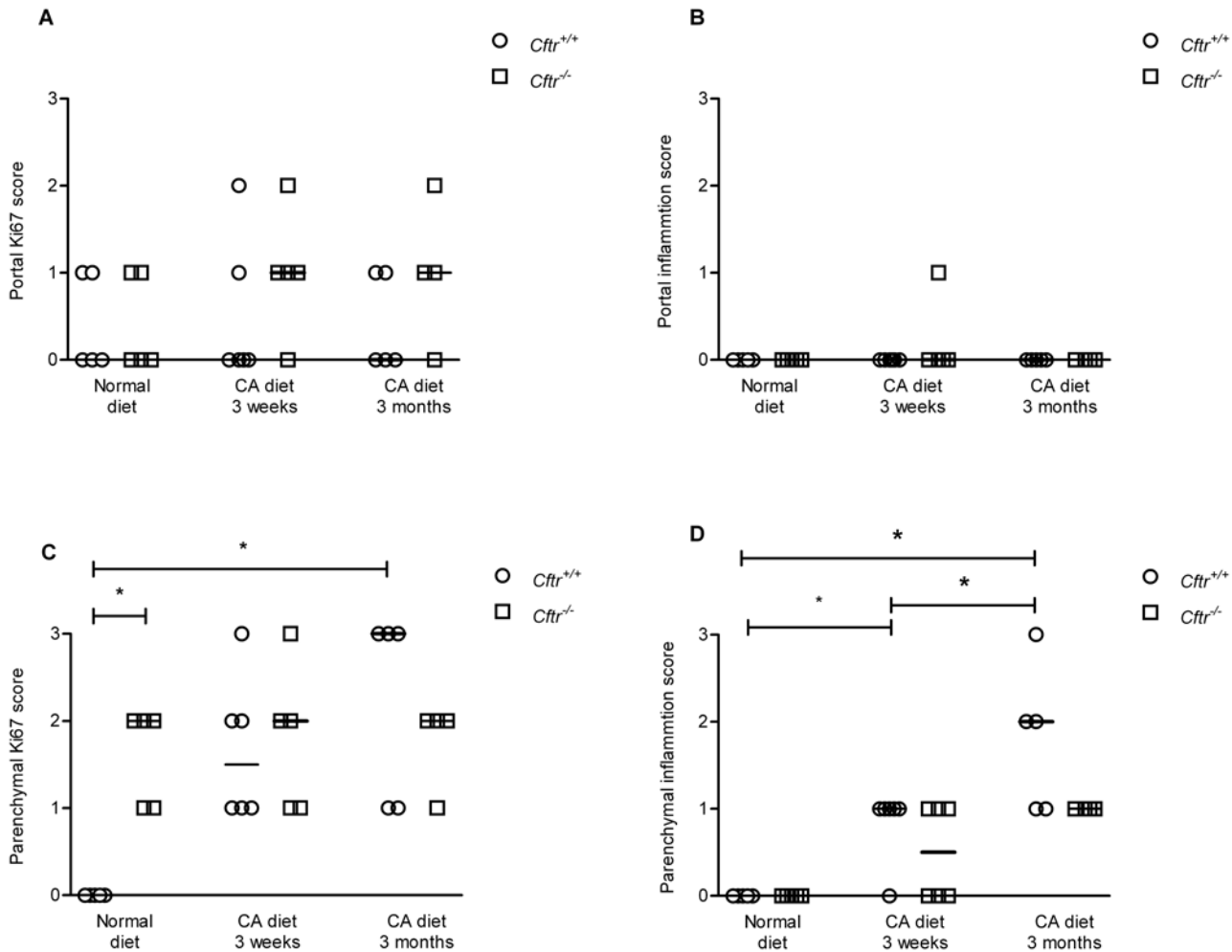


Fig 5. Liver histology in *Cftr* knockout mice (*Cftr*^{-/-}) and controls, fed a control diet or a cholic acid (CA) containing diet for 3 weeks or for 3 months. Histological evaluation of liver parenchymal inflammation (A), parenchymal Ki67 activity (B), portal inflammation (C), and portal Ki67 activity (D), in *Cftr* knockout mice (*Cftr*^{-/-}) and control littermates (*Cftr*^{+/+}) after a control diet, a 0.5%-CA (wt/wt) chow diet for three weeks, or a 0.5%-CA (wt/wt) chow diet for three months. Histology was scored in a blinded and semi-quantitative fashion using an ordinal scale (0: absent; 1: sporadic; 2: regular; 3: frequent). All results are presented individually per mouse; the horizontal black line represents the median of N = 5–7 mice per group. *P-value < 0.05.

doi:10.1371/journal.pone.0117599.g005

CF mouse models, in general, do not display histopathological signs of liver disease [37]. As an exception, however, Durie et al. reported the development of spontaneous liver disease upon ageing in the C57BL/6J *Cftr*^{-/-tm1Unc} CF mice [17]. The *Cftr*^{-/-tm1Unc} mice used by Durie et al. have a different genetic background than the mice used in our present study. The differences between the mouse strains are compatible with the concept genetic modifiers affect the hepatobiliary phenotype of CF. Considering the potential effects of intestinal microflora on bile salt composition, environmental factors may additionally play a role [36].

Chronic CA exposure significantly increased liver mass in control mice. Interestingly, CA induced liver growth was absent in CF mice. It was described previously that hydrophobic bile salts can induce liver growth in mice. Huang et al. reported that CA feeding (0.2%) for five days increased the relative liver weight by approximately 30% in wild type mice [38]. Song et al. reported an 8% increase in relative liver weight in C57BL/6 mice fed a CA enriched diet for one week [39]. These scientists also reported that DCA 0.3% for one week induce a 32%

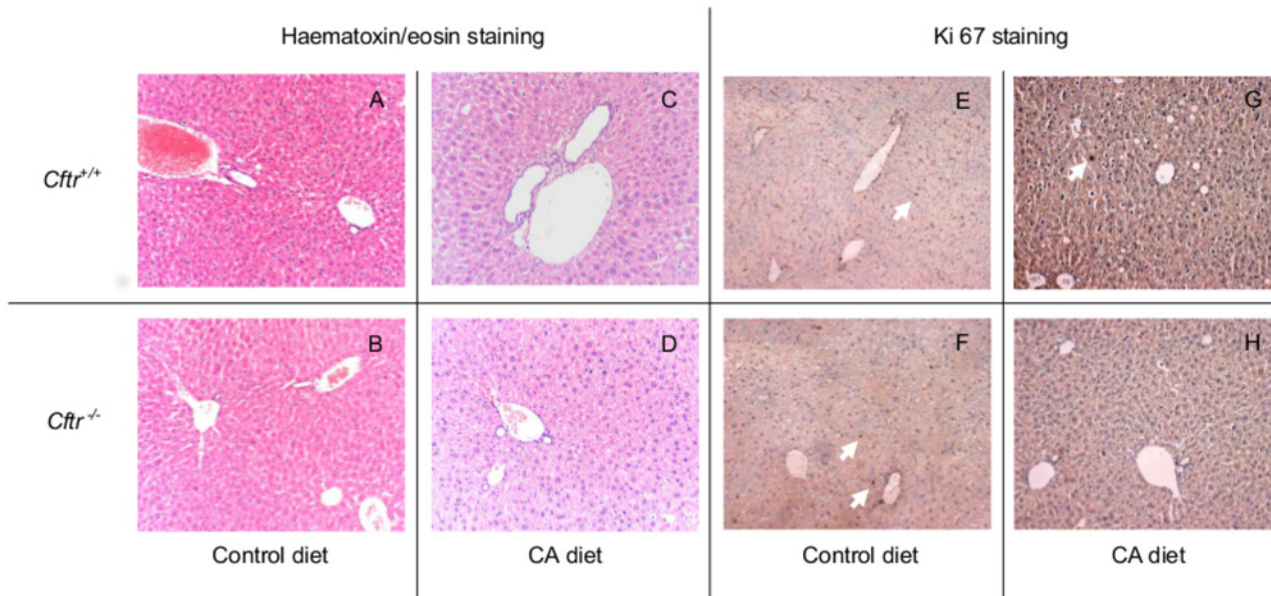


Fig 6. Liver histology of *Cftr* knockout mice (*Cftr*^{-/-}) and controls, fed a control diet or a cholic acid (CA) containing diet for 3 weeks. Liver histology (magnification 40x) of *Cftr* knockout mice (*Cftr*^{-/-}) and control littermates (*Cftr*^{+/+}) after a control or 0.5%-CA containing diet for three weeks. Liver slices with HE staining (panels: A-D), or Ki67 staining on HE staining background (panels: E-H). The white arrows, pointing at Ki67 positive cells indicate active cell proliferation in parenchymal and portal areas.

doi:10.1371/journal.pone.0117599.g006

increase in relative liver weight suggesting that the effect of the more hydrophobic bile salt DCA on liver growth was even more pronounced than that of CA.

It has been established that bile salt induced homeotrophic liver growth is regulated via the nuclear receptor Fxr [40], either in the liver or in the intestine [41]. Our finding that liver growth was absent in CA-fed *Cftr*^{-/-} and *Cftr*^{ΔF508/ΔF508} mice suggested that FXR signaling is perturbed in CF mice. This suggestion was supported by differences in *Cyp7a1* mRNA expression between *Cftr*^{-/-} and control mice after prolonged CA exposure. Hepatic *Cftr* is exclusively expressed in cholangiocytes, what makes *Cftr*-Fxr interference at the level of the liver less likely. The intestinal Fxr stimulated liver proliferation is probably mediated via the induction of the expression of *Fgf15* in the intestine [42]. Uriarte et al. recently reported that liver growth elicited by CA feeding was significantly diminished in *Fgf15*^{-/-} mice [43]. Since *Fgf15* expression is regulated by intestinal Fxr, these findings are compatible with a role for the intestinal Fxr-*Fgf15* axis in liver growth induction after hydrophobic bile salt exposure. In accordance with this concept, Debray et al. showed that *Fgf15* expression in *Cftr*^{-/-} mice was low at the level of the ileum, suggesting altered Fxr bile salt signaling at the level of the intestine in CF conditions [44].

Reactive oxygen species (ROS)-dependent signaling could also play a role in stimulation of hepatocyte proliferation and liver regeneration [45]. Sokol et al. demonstrated that, in human hepatocytes, mitochondria can generate ROS when exposed to hydrophobic bile salts [46]. However, we consider it less likely that this mechanism is involved for the liver growth and hepatocyte proliferation found in our model. As stated above *Cftr* is only expressed in the cholangiocytes and not in hepatocytes. In addition, we determined hepatic heme-oxygenase 1 (HO-1) expressions in our models, as a marker of hepatic oxidative stress. We observed no differences between HO-1 expression between *Cftr*^{-/-} and control mice before or after three week CA exposure (data not shown). These considerations and findings indicate that, at least at the hepatic level, chronic CA exposure, and liver growth are unlikely to be related to ROS-dependent signaling or oxidative stress.

In summary, we show that, in mice, *Cftr* plays a role in the hepatic adaptive response to prolonged hydrophobic bile salt exposure. The CF condition is characterized by a reduction in bile salt-induced hepatocyte proliferation, increase in biliary bile salt concentrations and difference in secondary bile salt composition. These changes suggest that the CF condition may be more prone to liver disease due to an impaired liver regeneration and homeotrophic liver growth response upon exposure to hepatotoxic substances.

Acknowledgments

The authors thank Rick Havinga for his excellent technical assistance and mouse micro-surgery and Marcela Doktorova for the performance of the qRT-PCR RNA analysis.

Author Contributions

Conceived and designed the experiments: FB MB WV HJ HV. Performed the experiments: FB MB WV AG JB HV. Analyzed the data: FB HV. Wrote the paper: FB MB HJ HV.

References

1. Collins FS (1992) Cystic fibrosis: Molecular biology and therapeutic implications. *Science* 256: 774–779. PMID: [1375392](#)
2. Kerem B, Rommens JM, Buchanan JA, Markiewicz D, Cox TK, et al. (1989) Identification of the cystic fibrosis gene: Genetic analysis. *Science* 245: 1073–1080. PMID: [2570460](#)
3. Scottjupp R, Lama M, Tanner MS (1991) Prevalence of liver-disease in cystic-fibrosis. *Arch Dis Child* 66: 698–701. PMID: [2053791](#)
4. Rowland M, Gallagher CG, Ó'Laoidé R, Canny G, Broderick A, et al. (2010) Outcome in cystic fibrosis liver disease. *Am J Gastroenterol* 106: 104–109. doi: [10.1038/ajg.2010.316](#) PMID: [20736939](#)
5. Corbett K, Kelleher S, Rowland M, Daly L, Drumm B, et al. (2004) Cystic fibrosis-associated liver disease: A population-based study. *J Pediatr* 145: 327–332. PMID: [15343185](#)
6. Lindblad A, Glaumann H, Strandvik B (1999) Natural history of liver disease in cystic fibrosis. *Hepatology* 30: 1151–1158. PMID: [10534335](#)
7. Debray D, Kelly D, Houwen R, Strandvik B, Colombo C (2011) Best practice guidance for the diagnosis and management of cystic fibrosis-associated liver disease. *J Cyst Fibros* 10: S29–S36. doi: [10.1016/S1569-1993\(11\)60006-4](#) PMID: [21658639](#)
8. Nash KL, Allison ME, McKeon D, Lomas DJ, Haworth CS, et al. (2008) A single centre experience of liver disease in adults with cystic fibrosis 1995–2006. *J Cyst Fibros* 7: 252–257. PMID: [18042441](#)
9. Cohn JA, Strong TV, Picciotto MR, Nairn AC, Collins FS, et al. (1993) Localization of the cystic fibrosis transmembrane conductance regulator in human bile duct epithelial cells. *Gastroenterology* 105: 1857–1864. PMID: [7504645](#)
10. Fitz JG, Basavappa S, McGill J, Melhus O, Cohn JA (1993) Regulation of membrane chloride currents in rat bile duct epithelial cells. *J Clin Invest* 91: 319–328. PMID: [7678606](#)
11. Beuers U, Hohenester S, de Buy Wenniger LJM, Kremer AE, Jansen PLM, et al. (2010) The biliary HCO₃-umbrella: A unifying hypothesis on pathogenetic and therapeutic aspects of fibrosing cholangiopathies. *Hepatology* 52: 1489–1496. doi: [10.1002/hep.23810](#) PMID: [20721884](#)
12. Fitz JG (2002) Regulation of cholangiocyte secretion. *Semin Liver Dis* 22: 241–249. PMID: [12360418](#)
13. Sinaasappel M (1988) Hepatobiliary pathology in patients with cystic fibrosis. *Acta Paediatr Scand* 363: 45–50; discussion 50–1.
14. Moyer K, Balistreri W (2009) Hepatobiliary disease in patients with cystic fibrosis. *Curr Opin Gastroenterol* 25: 272–278. doi: [10.1097/MOG.0b013e3283298865](#) PMID: [19381084](#)
15. Feranchak AP, Sokol RJ (2001) Cholangiocyte biology and cystic fibrosis liver disease. *Semin Liver Dis* 21: 471–488. PMID: [11745036](#)
16. Ratcliff R, Evans MJ, Cuthbert AW, MacVinish LJ, Foster D, et al. (1993) Production of a severe cystic fibrosis mutation in mice by gene targeting. *Nat Genet* 4: 35–41. PMID: [7685652](#)
17. Durie PR, Kent G, Phillips MJ, Ackertley CA (2004) Characteristic multiorgan pathology of cystic fibrosis in a long-living cystic fibrosis transmembrane regulator knockout murine model. *Am J Pathol* 164: 1481–1493. PMID: [15039235](#)

18. Freudenberg F, Leonard MR, Liu SA, Glickman JN, Carey MC (2010) Pathophysiological preconditions promoting mixed “black” pigment plus cholesterol gallstones in a $\Delta F508$ mouse model of cystic fibrosis. *Am J Physiol Gastrointest Liver Physiol* 299: G205–G214. doi: [10.1152/ajpgi.00341.2009](https://doi.org/10.1152/ajpgi.00341.2009) PMID: [20430874](https://pubmed.ncbi.nlm.nih.gov/20430874/)
19. Fiorotto R, Scirpo R, Trauner M, Fabris L, Hoque R, et al. (2011) Loss of CFTR affects biliary epithelium innate immunity and causes TLR4-NF- κ B-mediated inflammatory response in mice. *Gastroenterology* 141: 1498–1508.e5. doi: [10.1053/j.gastro.2011.06.052](https://doi.org/10.1053/j.gastro.2011.06.052) PMID: [21712022](https://pubmed.ncbi.nlm.nih.gov/21712022/)
20. van Nieuwerk CM, Groen AK, Ottenhoff R, van Wijland M, Van Den Bergh Weerman MA, et al. (1997) The role of bile salt composition in liver pathology of *mdr2* (-/-) mice: Differences between males and females. *J Hepatol* 26: 138–145. PMID: [9148004](https://pubmed.ncbi.nlm.nih.gov/9148004/)
21. Benedetti A, Alvaro D, Bassotti C, Gigliozzi A, Ferretti G, et al. (1997) Cytotoxicity of bile salts against biliary epithelium: A study in isolated bile ductule fragments and isolated perfused rat liver. *Hepatology* 26: 9–21. PMID: [9214446](https://pubmed.ncbi.nlm.nih.gov/9214446/)
22. Heuman D, Hylemon P, Vlahcevic Z (1989) Regulation of bile acid synthesis. III. correlation between biliary bile salt hydrophobicity index and the activities of enzymes regulating cholesterol and bile acid synthesis in the rat. *J Lipid Res* 30: 1161–1171. PMID: [2769071](https://pubmed.ncbi.nlm.nih.gov/2769071/)
23. Bijvelds MJC, Bronsveld I, Havinga R, Sinaasappel M, de Jonge HR, et al. (2005) Fat absorption in cystic fibrosis mice is impeded by defective lipolysis and post-lipolytic events. *Am J Physiol Gastrointest Liver Physiol* 288: G646–G653. PMID: [15528257](https://pubmed.ncbi.nlm.nih.gov/15528257/)
24. Bodewes FA, Wouthuyzen-Bakker M, Bijvelds MJ, Havinga R, de Jonge HR, et al. (2012) Ursodeoxycholate modulates bile flow and bile salt pool independently from the cystic fibrosis transmembrane regulator (*cftr*) in mice. *Am J Physiol Gastrointest Liver Physiol* 302: G1035–42. doi: [10.1152/ajpgi.00258.2011](https://doi.org/10.1152/ajpgi.00258.2011) PMID: [22301109](https://pubmed.ncbi.nlm.nih.gov/22301109/)
25. Verkade HJ, Havinga R, Shields DJ, Wolters H, Bloks VW, et al. (2007) The phosphatidylethanolamine N-methyltransferase pathway is quantitatively not essential for biliary phosphatidylcholine secretion. *J Lipid Res* 48: 2058–2064. PMID: [17595447](https://pubmed.ncbi.nlm.nih.gov/17595447/)
26. Mashige F, Imai K, Osuga T (1976) A simple and sensitive assay of total serum bile acids. *Clin Chim Acta* 70: 79–86. PMID: [947625](https://pubmed.ncbi.nlm.nih.gov/947625/)
27. Bligh EG, Dyer WJ (1959) A rapid method of total lipid extraction and purification. *Am J Physiol Gastrointest Liver Physiol* 37: 911–917.
28. Böttcher C, Van Gent C (1961) Changes in the composition of phospholipids and of phospholipid fatty acids associated with atherosclerosis in the human aortic wall. *J Atheroscler Res* 1: 36–46.
29. Kok T, Hulzebos CV, Wolters H, Havinga R, Agellon LB, et al. (2003) Enterohepatic circulation of bile salts in FXR-deficient mice: Efficient intestinal bile salt absorption in the absence of ileal bile acid-binding protein (*ibabp*). *J Biol Chem* 278: 41930–41937. PMID: [12917447](https://pubmed.ncbi.nlm.nih.gov/12917447/)
30. Mauad TH, Van Nieuwkerk CM, Dingemans KP, Smit JJ, Schinkel AH, et al. (1994) Mice with homozygous disruption of the *mdr2* P-glycoprotein gene. A novel animal model for studies of nonsuppurative inflammatory cholangitis and hepatocarcinogenesis. *Am J Pathol* 145: 1237–1245. PMID: [7977654](https://pubmed.ncbi.nlm.nih.gov/7977654/)
31. Van Nieuwkerk CM, Elferink RP, Groen AK, Ottenhoff R, Tytgat GN, et al. (1996) Effects of ursodeoxycholate and cholate feeding on liver disease in FVB mice with a disrupted *mdr2* P-glycoprotein gene. *Gastroenterology* 111: 165–171. PMID: [8698195](https://pubmed.ncbi.nlm.nih.gov/8698195/)
32. Scholte BJ, Davidson DJ, Wilke M, de Jonge HR (2004) Animal models of cystic fibrosis. *J Cyst Fibros* 3: 183–190. PMID: [15463956](https://pubmed.ncbi.nlm.nih.gov/15463956/)
33. van Doorninck JH, French PJ, Verbeek E, Peters RH, Morreau H, et al. (1995) A mouse model for the cystic fibrosis delta F508 mutation. *EMBO J* 14: 4403–4411. PMID: [7556083](https://pubmed.ncbi.nlm.nih.gov/7556083/)
34. De Lisle RC, Roach EA, Norkina O (2006) Eradication of small intestinal bacterial overgrowth in the cystic fibrosis mouse reduces mucus accumulation. *J Pediatr Gastroenterol Nutr* 42: 46–52. PMID: [16385253](https://pubmed.ncbi.nlm.nih.gov/16385253/)
35. De Lisle RC, Mueller R, Boyd M (2011) Impaired mucosal barrier function in the small intestine of the cystic fibrosis mouse. *J Pediatr Gastroenterol Nutr* 53: 371–379. doi: [10.1097/MPG.0b013e318219c397](https://doi.org/10.1097/MPG.0b013e318219c397) PMID: [21970994](https://pubmed.ncbi.nlm.nih.gov/21970994/)
36. Wouthuyzen-Bakker M, Bijvelds MJC, de Jonge HR, De Lisle RC, Burgerhof JGM, et al. (2011) Effect of antibiotic treatment on fat absorption in mice with cystic fibrosis. *Pediatr Res* 71: 4–12.
37. Wilke M, Buijs-Offerman RM, Aarbiou J, Colledge WH, Sheppard DN, et al. (2011) Mouse models of cystic fibrosis: Phenotypic analysis and research applications. *J Cyst Fibros* 10: S152–S171. doi: [10.1016/S1569-1993\(11\)60020-9](https://doi.org/10.1016/S1569-1993(11)60020-9) PMID: [21658634](https://pubmed.ncbi.nlm.nih.gov/21658634/)
38. Huang W, Ma K, Zhang J, Qatanani M, Cuvillier J, et al. (2006) Nuclear receptor-dependent bile acid signaling is required for normal liver regeneration. *Science* 312: 233–236. PMID: [16614213](https://pubmed.ncbi.nlm.nih.gov/16614213/)

39. Song P, Zhang Y, Klaassen CD (2011) Dose-response of five bile acids on serum and liver bile acid concentrations and hepatotoxicity in mice. *Toxicol Sci* 123: 359–367. doi: [10.1093/toxsci/kfr177](https://doi.org/10.1093/toxsci/kfr177) PMID: [21747115](https://pubmed.ncbi.nlm.nih.gov/21747115/)
40. Wang Y, Chen W, Moore DD, Huang W (2008) FXR: A metabolic regulator and cell protector. *Cell Res* 18: 1087–1095. doi: [10.1038/cr.2008.289](https://doi.org/10.1038/cr.2008.289) PMID: [18825165](https://pubmed.ncbi.nlm.nih.gov/18825165/)
41. Zhang L, Wang Y, Chen W, Wang X, Lou G, et al. (2012) Promotion of liver regeneration/repair by farnesoid X receptor in both liver and intestine in mice. *Hepatology* 56: 2336–2343. doi: [10.1002/hep.25905](https://doi.org/10.1002/hep.25905) PMID: [22711662](https://pubmed.ncbi.nlm.nih.gov/22711662/)
42. Wu AL, Coulter S, Liddle C, Wong A, Eastham-Anderson J, et al. (2011) FGF19 regulates cell proliferation, glucose and bile acid metabolism via FGFR4-dependent and independent pathways. *PLoS one* 6: e17868. doi: [10.1371/journal.pone.0017868](https://doi.org/10.1371/journal.pone.0017868) PMID: [21437243](https://pubmed.ncbi.nlm.nih.gov/21437243/)
43. Uriarte I, Fernandez-Barrena MG, Monte MJ, Latasa MU, Chang HC, et al. (2013) Identification of fibroblast growth factor 15 as a novel mediator of liver regeneration and its application in the prevention of post-resection liver failure in mice. *Gut* 62: 899–910. doi: [10.1136/gutjnl-2012-302945](https://doi.org/10.1136/gutjnl-2012-302945) PMID: [23292666](https://pubmed.ncbi.nlm.nih.gov/23292666/)
44. Debray D, Rainteau D, Barbu V, Rouahi M, El Mourabit H, et al. (2012) Defects in gallbladder emptying and bile acid homeostasis in mice with cystic fibrosis transmembrane conductance regulator deficiencies. *Gastroenterology* 142: 1581–1591. e6. doi: [10.1053/j.gastro.2012.02.033](https://doi.org/10.1053/j.gastro.2012.02.033) PMID: [22370478](https://pubmed.ncbi.nlm.nih.gov/22370478/)
45. Tormos AM, Taléns-Visconti R, Nebreda AR, Sastre J (2013) p38 MAPK: A dual role in hepatocyte proliferation through reactive oxygen species. *Free Radic Res* 47: 905–916. doi: [10.3109/10715762.2013.821200](https://doi.org/10.3109/10715762.2013.821200) PMID: [23906070](https://pubmed.ncbi.nlm.nih.gov/23906070/)
46. Sokol RJ, Dahl R, Devereaux MW, Yerushalmi B, Kobak GE, et al. (2005) Human hepatic mitochondria generate reactive oxygen species and undergo the permeability transition in response to hydrophobic bile acids. *J Pediatr Gastroenterol Nutr* 41: 235–243. PMID: [16056106](https://pubmed.ncbi.nlm.nih.gov/16056106/)