


RESEARCH ARTICLE

Open Access



Diagnostic possibility of the combination of exhaled nitric oxide and blood eosinophil count for eosinophilic asthma

Jiang-Hua Li, Rui Han¹, Yu-Bo Wang¹, Min Cheng², Heng-Yi Chen¹, Wen-Hui Lei¹, Li Li¹, Chen Gao³, Na-Na Zhao¹, Nai-Fu Nie¹, Zhong-Yan Li¹, Guo-Qing Yin¹, Shuai Huang¹ and Yong He^{1*} 

Abstract

Background: Tests to identify reversible airflow limitation are important in asthma diagnosis, but they are time-consuming and it may be difficult for patients to cooperate. We aimed to evaluate whether the combination of fractional exhaled nitric oxide (FeNO) and blood eosinophil (B-Eos) can be used to distinguish some asthma patients who could avoid objective tests.

Methods: We conducted a retrospective cohort study on 7463 suspected asthma cases between January 2014 and December 2019 in Chongqing, China, and identified 2349 patients with complete FeNO, B-Eos count, and spirometry data. Asthma was diagnosed by clinicians by the criteria of recurrent respiratory symptoms and a positive bronchial provocation or bronchodilation test (BPT, BPD). We evaluated the diagnostic accuracy of FeNO or B-Eos alone or both in combination for asthma using receiver operating characteristic (ROC) curve analysis.

Results: In this study, 824 patients were diagnosed with asthma. When FeNO and B-Eos counts were used in combination, the area under the ROC curve (AUC) for diagnosing asthma increased slightly (0.768 vs. 0.745 [FeNO] or 0.728 [B-Eos]; both $P < 0.001$). The odds ratio for having asthma increased progressively with a gradual increase in FeNO or B-Eos count (both $P < 0.001$; assessed using the Cochran–Armitage trend test). Further analysis of in-series combinations of different threshold values for these biomarkers indicated that moderately elevated biomarker levels (FeNO > 40 ppb and B-Eos > 300 cells/ μ l) support a diagnosis of asthma because diagnostic specificity was $> 95\%$ and the positive likelihood ratio (PLR) was > 10 . This conclusion was verified when selecting the 2017–2019 data as the internal validation dataset.

Conclusion: FeNO or B-Eos count alone is insufficient to accurately diagnose asthma. Patients with moderately elevated biomarkers (FeNO > 40 ppb and B-Eos > 300 cells/ μ l) could be diagnosed with asthma and avoid objective tests when such tests are not feasible.

Keywords: Asthma, Exhaled nitric oxide, Blood eosinophil count

Introduction

Asthma is characterized by recurrent respiratory symptoms and a variable expiratory-airflow limitation, affecting approximately 334 million people worldwide [1, 2]. Meanwhile, many asthma patients are still underdiagnosed, which leads to a decrease in work productivity and poor vitality and mental health [3, 4]. The main

*Correspondence: heyong8998@126.com; heyong@tmmu.edu.cn

¹ Department of Respiratory Medicine, Daping Hospital, Army Medical University, 10# Changjiang Branch Road, Chongqing 400042, China
Full list of author information is available at the end of the article



© The Author(s) 2021. **Open Access** This article is licensed under a Creative Commons Attribution 4.0 International License, which permits use, sharing, adaptation, distribution and reproduction in any medium or format, as long as you give appropriate credit to the original author(s) and the source, provide a link to the Creative Commons licence, and indicate if changes were made. The images or other third party material in this article are included in the article's Creative Commons licence, unless indicated otherwise in a credit line to the material. If material is not included in the article's Creative Commons licence and your intended use is not permitted by statutory regulation or exceeds the permitted use, you will need to obtain permission directly from the copyright holder. To view a copy of this licence, visit <http://creativecommons.org/licenses/by/4.0/>. The Creative Commons Public Domain Dedication waiver (<http://creativecommons.org/publicdomain/zero/1.0/>) applies to the data made available in this article, unless otherwise stated in a credit line to the data.

reason is that the common symptoms of asthma are relatively non-specific [5], and the objective tests recommended by the Global Initiative for Asthma (GINA), including the bronchial-provocation test (BPT) and the bronchodilation test (BDT), require complex cooperation from patients, overly long durations of examination time, and might pose certain risks [5, 6]. Therefore, finding a simple and effective method for diagnosing asthma is an urgent clinical problem.

As asthma is mainly driven by type 2 (T2: includes type 2 innate lymphoid cells [ILC2s] and T-helper 2 [Th2]) inflammatory disease [7, 8], even moderate to severe persistent corticosteroid-refractory (defined as T2-low) asthma has partial T2-high features [9]. Although induced sputum has been recommended to detect airway inflammation [1], it is time-consuming and laborious, it requires experienced laboratory personnel, and many patients cannot produce sufficient samples, making it uncommon outside specialist centers [10]. Meanwhile, fractional exhaled nitric oxide (FeNO) and blood eosinophil (B-Eos) count have been suggested as biomarkers to distinguish airway inflammation in asthma [11, 12]. Unfortunately, FeNO or B-Eos count alone is insufficient to accurately diagnose asthma [13–15]. Although previous studies showed that combining these two biomarkers provides additional predictive information [16], several limitations have been identified. In some studies, the researchers confirmed that these two biomarkers could be used to identify types of chronic respiratory diseases, but such studies were conducted in the general population [17, 18]. Significant differences in FeNO and B-Eos count between asthmatic and healthy people [19] can lead to overestimating the diagnostic accuracy of these two biomarkers. Meanwhile, some conclusions have been drawn on the basis of selected asthma patients such as adolescents and young adults [20] and might not be applicable to all adult patients. In addition, the diagnosis of asthma in some studies was self-reported (mainly based on non-specific patient symptoms) [18, 21], which led to under- or overdiagnosis of asthma because patients inadequately reported respiratory symptoms to their doctors [5]. Importantly, due to the lack of widely accepted definitions of high FeNO levels and high B-Eos counts, the combination of these two biomarkers for the diagnosis of asthma is worthy of further study.

In the present study, we diagnosed asthma when patients had recurrent respiratory symptoms and a positive result of an objective test (BPT or BDT). We studied the performance of these two biomarkers in asthmatic patients and evaluated the accuracy of FeNO or B-Eos alone or both in combination for the diagnosis of asthma. By analyzing combinations of different threshold levels of these two biomarkers, we aimed to identify which patient

groups could avoid complex objective tests, which usually are not accessible in primary care.

Methods and materials

Population

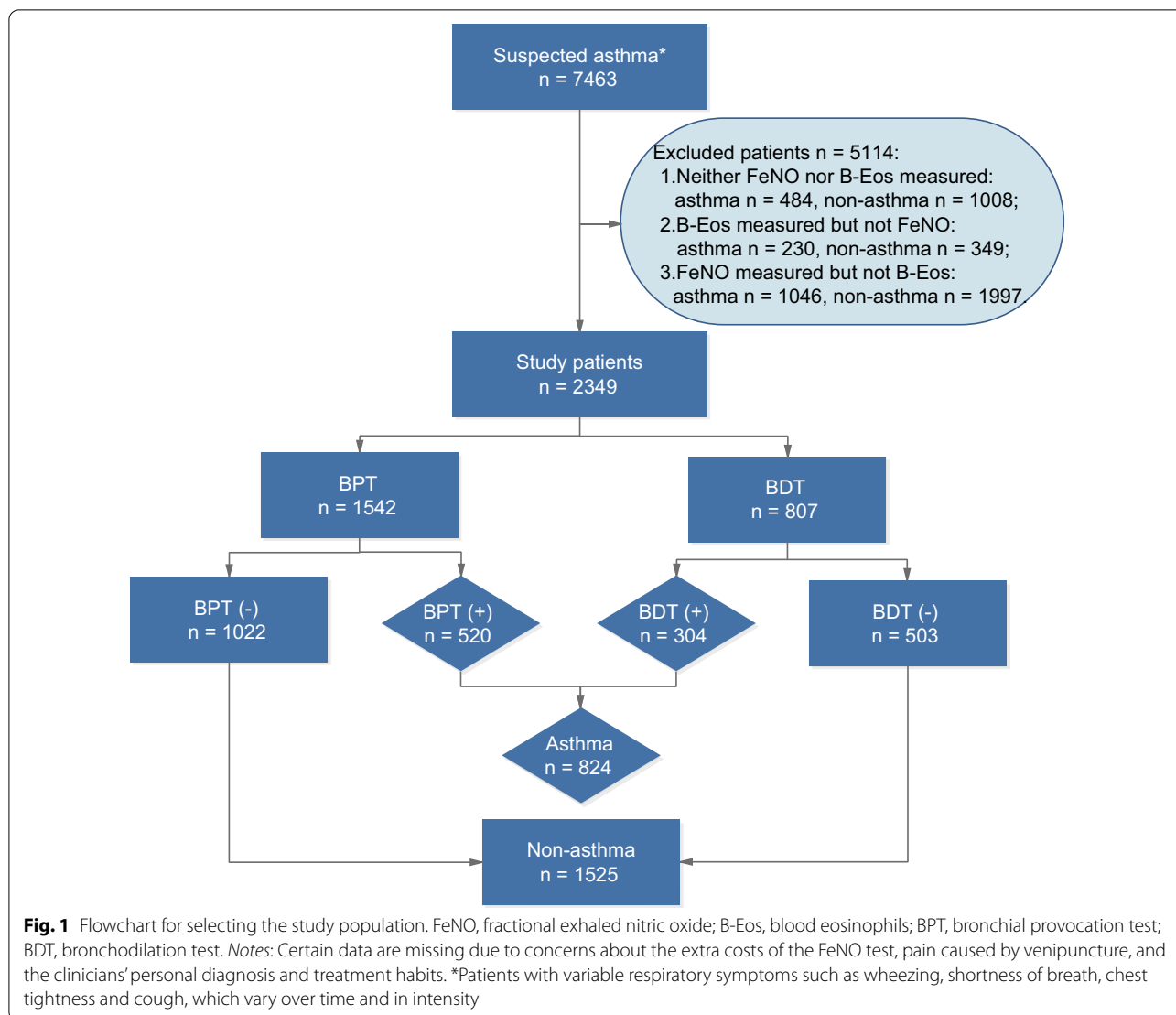
We screened all patients who were admitted to the respiratory clinic of Daping Hospital for suspected asthma between January 2014 and December 2019. The inclusion criteria were as follows: (1) age > 12 years; (2) experienced symptoms indicative of asthma, such as wheezing, shortness of breath, chest tightness and cough, which vary over time and in intensity; (3) no respiratory infections within the past 7 days; (4) no treatment with inhaled or oral corticosteroids, leukotriene receptor antagonists, or antihistamines within the past 72 h. All examinations were prescribed simultaneously by the same clinician and completed within two days. It is important to perform the FeNO test before performing spirometry [22]; doctors performing BPT/BDT tests did not know FeNO or B-Eos results. A total of 7463 suspected asthmatic patients were screened (Fig. 1), of whom 163 patients were adolescents (under 18 years). Due to concerns about the extra costs of the FeNO test or pain caused by venipuncture to obtain blood samples to count B-Eos, as well as personal diagnosis and treatment habits of clinicians, many data were incomplete. Among them were data from subjects who did not undergo FeNO and B-Eos tests ($n=1492$) and participants without FeNO ($n=579$) or B-Eos measurements ($n=3043$). Ultimately, 2349 patients with complete data were enrolled in the main study, and the conclusions obtained from this cohort were verified in the cohort of patients with missing or incomplete data.

Fractional exhaled nitric oxide

FeNO was evaluated with an online measurement technique using the Nano Coulomb nitric oxide analyzer (Shangwo Biotechnology Co., Ltd., Jiangsu, China), following the recommendations from the European Respiratory Society (ERS) and the American Thoracic Society (ATS) [23]. During the inspiratory phase, the patient was required to inhale to total lung capacity through a mouthpiece, which was used to prevent air leakage and contamination by ambient nitric oxide. During the exhalation phase, an animated interface on the device helped the participant maintain a correct constant expiratory-flow rate (50 ml/s). FeNO results were reported as parts per billion (ppb), and FeNO measurements were performed prior to spirometry, the methacholine challenge test, and the reversibility test.

Blood eosinophil count

Peripheral venous blood samples were taken, and B-Eos and leukocytes were counted using a Sysmex XN-9000



Hematology Analyzer (Sysmex, Kobe, Japan), a multi-functional automatic hematology analyzer and leukocyte classifier. B-Eos counts were reported along with other leukocyte subpopulations, and the percentage of each subpopulation was calculated.

Spirometry, bronchial provocation test and bronchial dilation test

Baseline spirometry, the BPT, and the BDT were performed using a Jaeger spirometer (Erich Jaeger GmbH, Würzburg, Germany) according to ATS/ERS recommendations [24]. The BPT was performed for patients whose baseline forced expiratory volume in the first second (FEV₁) was >70% of the predicted value, FEV₁ was measured using a Jaeger Aerosol Provocation System [25]. Results were considered positive when the

methacholine (Sigma-Aldrich, St. Louis, MO, USA) cumulative dose causing a 20% decrease in FEV₁ (PD₂₀-FEV₁) was <2.5 mg. The BPT was usually preferred, but the BDT was performed when the patient's baseline FEV₁ was <70% of the predicted value. After the patient had inhaled 400 µg albuterol sulfate aerosol (GlaxoSmithKline, Brentford, UK), reversibility test results were considered positive when FEV₁ was increased more than 12% and 200 ml above baseline. Positive BPT results are presented as follows: +/- indicates that the PD₂₀-FEV₁ of methacholine was 1.076–2.500 mg; + indicates that it was 0.294–1.075 mg; ++ indicates that it was 0.035–0.293 mg; +++ indicates that it was <0.035 mg. BDT results are presented as follows: - indicates that FEV₁ increased less than 12% or 200 ml above baseline after inhalation of 400 µg

salbutamol sulfate aerosol; + indicates that FEV₁ increased by 12–25% and its absolute value increased by 200 ml; ++ indicates that FEV₁ increased by 25–40% and its absolute value increased by 200 ml; +++ indicates that FEV₁ increased >40% and its absolute value increased by 200 ml.

Statistical analysis

Statistical analyses were mainly performed using SPSS software version 26.0 (IBM Corp., Armonk, NY, USA). Continuous variables are shown as mean ± standard deviation (SD) or as median and interquartile range (IQR), and categorical variables are presented as frequencies. Normality was evaluated using the Shapiro–Wilk test. Next, we used Student's *t* test for normally distributed continuous variables and the Mann–Whitney *U* test for continuous non-normally distributed variables. Categorical variables were analyzed using Pearson's chi-square test. The correlation between two non-normally distributed continuous variables was assessed by determining Spearman's rank correlation coefficient. Receiver operating characteristic (ROC) curve analysis was performed using MedCalc software version 18.2.1 (MedCalc Software, Ostend, Belgium). The optimal cutoff values of these two biomarkers were obtained based on the highest value of the Youden index. The Hanley–McNeil

non-parametric method was employed to compare the area under the ROC curve. The overlap of asthma patients with normal or elevated FeNO and B-Eos count is displayed in a Venn diagram (constructed using the online interactive Venn diagram viewer jvenn [26]). Logistic regression analysis was performed to assess risk factors for asthma or low FEV₁. A forest plot was drawn using GraphPad Prism software version 8 (GraphPad Software, San Diego, CA, USA). The increase in odds ratio was assessed using the Cochran–Armitage trend test. *P*-values < 0.05 were considered to indicate statistical significance unless otherwise specified. To evaluate the impact of bias caused by missing data, we performed sensitivity analyses to verify whether the incomplete data population differed from the main study population, and assessed the quality of the report by using the Standards for Reporting Diagnostic accuracy studies (STARD) checklist.

Results

Characterization of study population

The main study population included 897 males and 1452 females, of whom 824 patients were diagnosed with asthma. As shown in Table 1, the baseline characteristics of the two groups (asthma vs. non-asthma) were identical (*P* > 0.05), while asthmatic patients had significantly

Table 1 Characteristics of the study participants (n = 2349)

Characteristics	Asthma (n = 824)	Non-asthma (n = 1525)	<i>P</i> value
Age (years)*	46 (36–53)	47 (35–55)	0.494
Height (cm)*	159 (153–165)	159 (153–165)	0.695
Weight (kg)*	59 (52–66)	59 (53–67)	0.983
BMI (kg/m ²)*	23.38 (21.23–25.71)	23.5 (21.21–25.87)	0.250
WBC count (× 10 ⁹ /l)*	7.24 (6.06–8.83)	7.05 (5.86–8.68)	< 0.001
%Neu (%)*	59.30 (52.50–65.70)	61.90 (55.20–68.90)	< 0.001
B-Eos count (cells/μl)*	306 (148–542)	125 (66–238)	< 0.001
%B-Eos (%)*	4.50 (2.10–7.40)	1.80 (1.00–3.30)	< 0.001
FeNO (ppb)*	52 (25–87)	25 (17–35)	< 0.001
FVC (predicted %)*	94.40 (83.40–104.38)	96.20 (86.60–106.90)	0.001
FEV ₁ (predicted %)*	79.65 (62.95–91.10)	92.40 (80.55–103.50)	< 0.001
FEV ₁ /FVC (%)*	68.54 (60.4–77.35)	80.24 (73.06–84.89)	< 0.001
Sex [‡]			0.679
Female	514 (62.4%)	938 (61.5%)	
Male	310 (37.6%)	587 (38.5%)	
Objective test type [‡]			0.057
BPT	520 (63.1%)	1022 (67.0%)	
BDT	304 (36.9%)	503 (33.0%)	

Data are presented as median (interquartile range) or number (percentage)

BMI, body mass index; %Neu, percentage of blood neutrophils; WBC, white blood cell; B-Eos, blood eosinophil; %B-Eos, percentage of blood eosinophils; FeNO, fractional exhaled nitric oxide; FVC, forced vital capacity; FEV₁, forced expiratory volume in 1 s

* Data were analyzed using the Mann–Whitney *U* test

[‡] Data were analyzed using Pearson's chi-square test

(See figure on next page.)

Fig. 2 Correlation between biomarkers and objective tests. **A** Scatter plot showing the correlation between FeNO levels and the B-Eos count in asthmatic patients (n = 824). **B** Scatter plot showing the correlation between FeNO and the B-Eos count in non-asthmatic patients (n = 1525). **C** Violin plots showing the FeNO levels in different BPT subgroups. **D** Violin plots showing the B-Eos counts in different BPT subgroups. **E** Violin plots showing the FeNO levels in different BDT subgroups. **F** Violin plots showing the B-Eos counts in different BDT subgroups. *rs*, Spearman's ρ . *Notes*: The positive BPT results are presented as follows: +/– indicates that the PD₂₀-FEV₁ of methacholine was 1.076–2.500 mg; + indicates that it was 0.294–1.075 mg; ++ indicates that it was 0.035–0.293 mg; +++ indicates that it was < 0.035 mg. The BDT results are presented as follows: – indicates that FEV₁ increased less than 12% or 200 ml above baseline after inhalation of 400 µg salbutamol sulfate aerosol; + indicates that FEV₁ increased by 12–25% and its absolute value increased by 200 ml; ++ indicates that FEV₁ increased by 25–40% and its absolute value increased by 200 ml; +++ indicates that FEV₁ increased > 40% and its absolute value increased by 200 ml. *Data were analyzed by Spearman's rank correlation coefficients

higher white blood cell counts, B-Eos counts, B-Eos percentages, and FeNO levels (7.24 vs. $7.05 \times 10^9/l$, 306 vs. 105 cells/µl, 4.5% vs. 1.8%, and 52 vs. 25 ppb, respectively; all $P < 0.001$). Conversely, the percentage of blood neutrophils, forced vital capacity (FVC), forced expiratory volume in the first second (FEV₁), and FEV₁/FVC ratio of asthmatic patients were significantly lower (59.3% vs. 61.9%, 94.4% vs. 96.2%, 79.65% vs. 92.40%, and 68.54% vs. 80.24%, respectively; all $P < 0.001$). Patients with incomplete data (n = 5114) were similar to the main study population with respect to demographic characteristics, proportion of asthma diagnoses, FeNO level, and B-Eos count ($P > 0.05$; Additional file 3: Table S1).

Correlation between biomarkers and BPT or BDT

We found a weak correlation between FeNO levels and B-Eos counts (Spearman's ρ was 0.460 in asthmatic patients and 0.167 in non-asthmatic patients; both $P < 0.001$; Fig. 2A, B). When classified by airway hyperresponsiveness level (according to the cumulative dose of methacholine), FeNO and B-Eos count in the moderate to severe group were higher than in the mild group (73 or 70 vs. 45 ppb, and 402 or 347 vs. 293 cells/µl, respectively; both $P < 0.05$; Fig. 2C, D). FeNO and B-Eos count were not significantly different in any BDT-positive subgroup (grouped by the increase in FEV₁ after the BDT; 52 vs. 51 vs. 48.5 ppb, and 290 vs. 312 vs. 328 cells/µl, respectively; all $P > 0.05$; Fig. 2E, F).

Diagnostic capabilities of biomarkers

The area under the receiver operating characteristic curve (AUC) of asthma diagnosis showed no difference between FeNO and B-Eos count ($P = 0.212$), but the AUC improved when these two biomarkers were used in combination (0.768 (95% confidence interval [CI], 0.746–0.789) vs. 0.745 (0.723–0.768) or 0.728 (0.706–0.750); both $P < 0.001$; Fig. 3A). The AUC of asthma diagnosis presented no significant difference between B-Eos count and percentage (0.728 (0.706–0.750) vs. 0.727 (0.705–0.749); $P = 0.734$; Fig. 3B). Whether we included incomplete data or stratified by BPT, BDT, sex (females in China hardly smoke; according to a survey on the

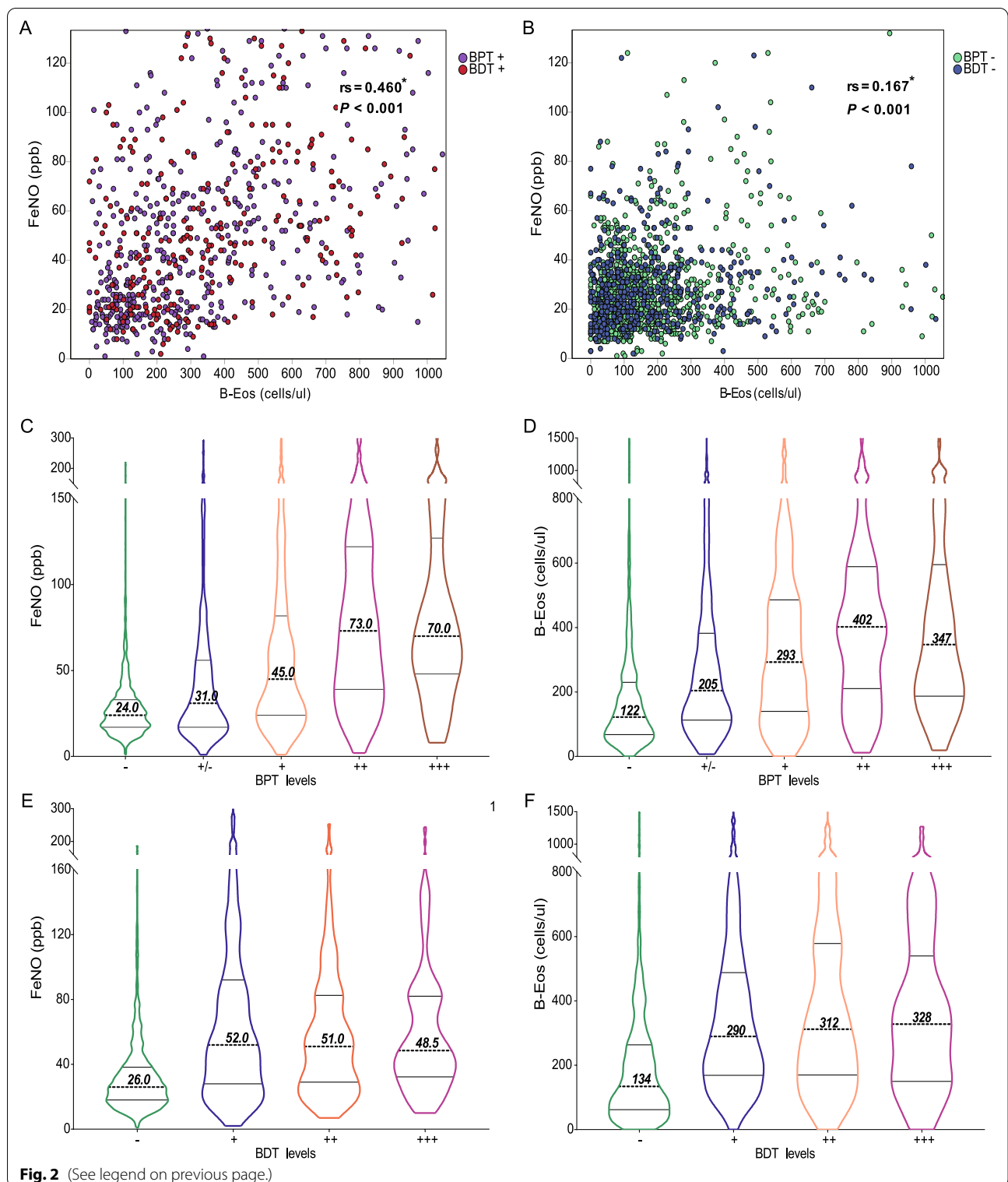
burden of chronic diseases related to smoking, the standard smoking rate for Chinese women is 2.7% [27]), or body mass index (BMI), the diagnostic accuracy of these two biomarkers did not considerably change (Additional file 1: Figure S1A–F). According to the maximum Youden index, the optimal cutoff values for FeNO and B-Eos count to diagnose asthma were 38 ppb and 203 cells/µl, respectively; the sensitivities and specificities were respectively 62.74% and 81.44%, and 67.23% and 69.9% (Additional file 3: Table S2).

Diagnostic accuracy for asthma of FeNO and B-Eos combined

As FeNO or B-Eos count alone was insufficient to accurately diagnose asthma, we analyzed the diagnostic accuracies of in-series combinations of different threshold levels of FeNO and B-Eos for asthma (Table 2). When linking the different thresholds of these two biomarkers to reach the goal of positive likelihood ratio (PLR) > 10 (Fig. 4C, D), which permitted a diagnosis of asthma [28], the appropriate threshold values were FeNO > 40 ppb and B-Eos > 300 cells/µl. Correspondingly, 327 patients were diagnosed, accounting for 39.7% of total asthma patients, and the misdiagnosis rate was as low as 4.5% (Additional file 3: Table S3). This conclusion was verified when selecting the data from 2017 to 2019 as the verification cohort (Additional file 3: Table S4). If we simply increased the cutoff for FeNO alone to achieve the goal (PLR > 10), the appropriate threshold value was raised to 80 ppb, and diagnostic sensitivity was reduced to 28.76% (Additional file 3: Table S2). However, using B-Eos alone could not achieve the goal of PLR > 10.

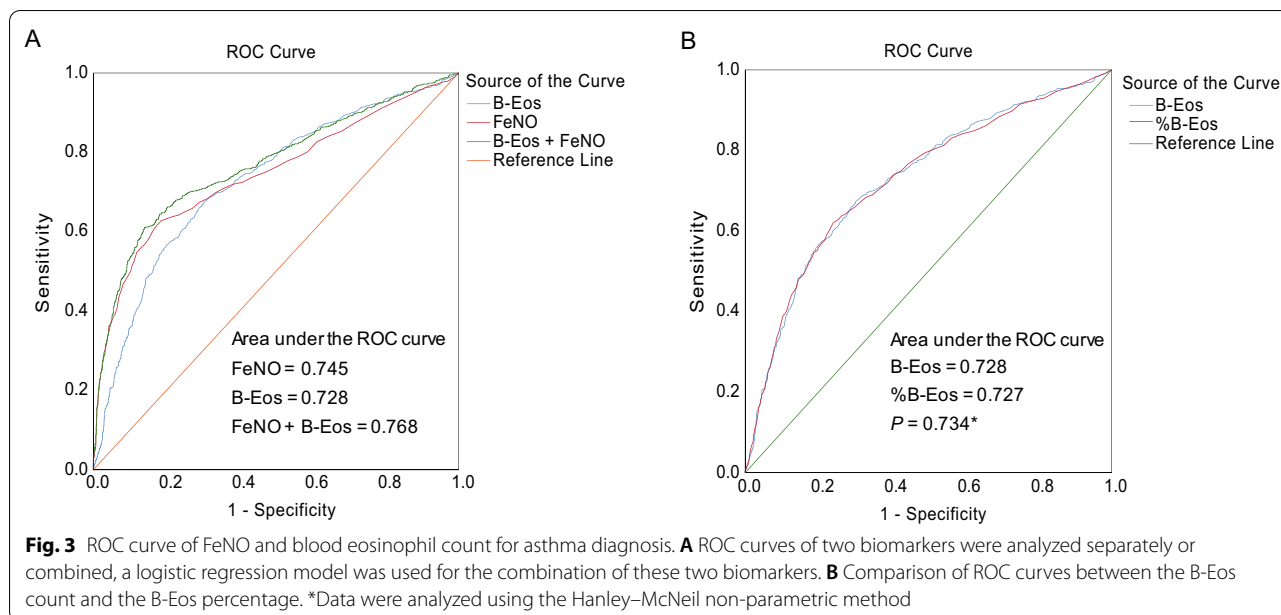
Overlap between asthma patients and normal or elevated biomarkers

Based on cutoff values selected for these two biomarkers (FeNO, 40 ppb; B-Eos, 300 cells/µl), we classified the 2349 patients into four groups: group A (high FeNO, high B-Eos count), group B (high FeNO, low B-Eos count), group C (low FeNO, high B-Eos count), and group D (low FeNO, low B-Eos count). The overlap between asthmatic patients and increased FeNO or B-Eos count is shown



in Fig. 4A. The overall chi-square test between the four groups showed statistical differences, and there were also significant differences in the proportion of asthma

patients between any two of the four groups (Fig. 4B, all $P < 0.001$). Asthma patients accounted for 82.8% of group



A, while in group D the proportion of asthma patients was the lowest at 17.8%.

Increased biomarkers caused changes in the risk of having asthma or reduced lung function

The multivariable adjusted odds ratio (aOR; adjusted by age and Sex) of having asthma increased progressively with a gradual increase in FeNO or B-Eos count ($P < 0.001$; Fig. 5A, B). Correspondingly, the aOR of having reduced lung function ($FEV_1 < 80\%$ of the predicted value) increased progressively with a gradual increase of B-Eos count or FeNO ($P < 0.001$; Fig. 6A, B). These results did not significantly change when we included incomplete data (Additional file 2: Figure S2).

Discussion

FeNO and B-Eos may help to physicians to increase the possibility of asthma diagnosis and to improve the accuracy to refer patients to a specialized center. In the present study, we provide a large-cohort analysis of the relationship among FeNO, B-Eos, and asthma in Chinese patients. According to receiver operating characteristic curve analysis, combining FeNO and B-Eos counts by logistic regression had limited effects on the diagnostic efficacy of asthma, because AUC increased from 0.745 for FeNO or 0.728 for B-Eos to only 0.768 for both biomarkers combined. Another expected finding was that the risk of having asthma increased progressively with a gradual increase in FeNO or B-Eos count. Notably, patients with moderately elevated biomarkers ($FeNO > 40$ ppb and $B-Eos > 300$ cells/ μ l) could be diagnosed with asthma, as the diagnostic specificity is $> 95\%$ and the PLR > 10 .

Although diagnostic sensitivity was reduced to 30.59%, these patients benefited from avoiding BPTs, especially since the simultaneous increase in FeNO and B-Eos count is associated with higher bronchial hyperresponsiveness [20], which may trigger a heavy bronchospasm [29].

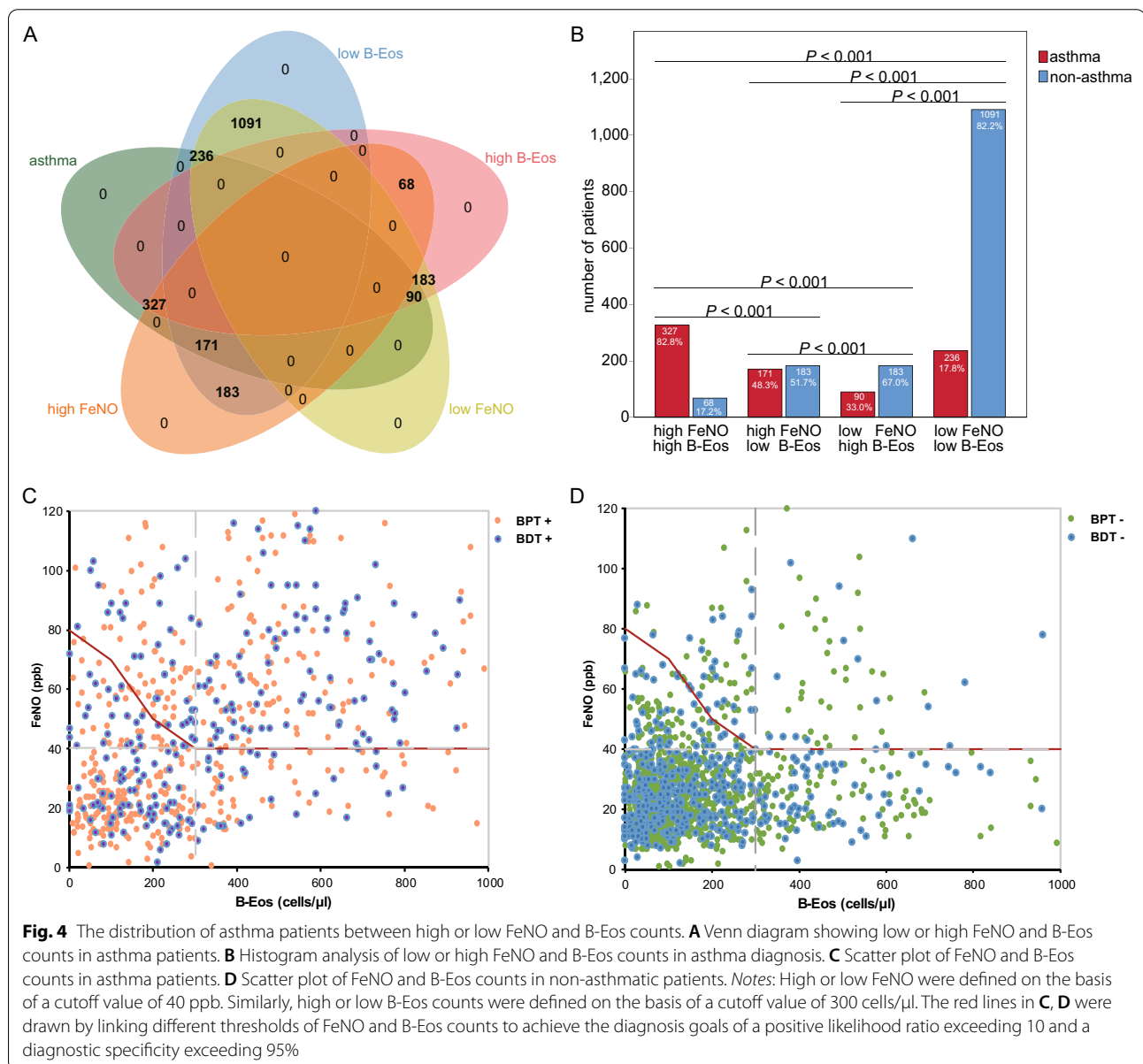
At present, in order to avoid underdiagnosis or overdiagnosis, objective tests must be conducted to confirm the diagnosis of asthma [5]. However, there are several limitations to objective tests [6]. The BPT is time consuming, carries a risk of severe bronchospasm, and is generally not available in primary care; the BDT has limited value for distinguishing asthma from chronic airway diseases; and variable peak expiratory flow requires good cooperation and adherence [30–32]. Conspicuously, the UK National Institute for Health and Care Excellence (NICE) recommends that FeNO, a potential indirect measure of type 2 airway inflammation that represents the more prevalent type of asthma, should be measured in all suspected asthma patients [33]. Our data indicated that the optimal cutoff level for FeNO in the diagnosis of asthma was 38 ppb, in line with the recommendation by the Japanese Respiratory Society (JRS) [34] that a FeNO cutoff value of 35 ppb be used to diagnose asthma. Meanwhile, GINA conservatively points out that measurement of FeNO alone is insufficient to determine or rule out asthma [1]. This is because diagnostic cutoff values for FeNO are mostly concentrated in the intermediate range (25–50 ppb), and these levels can overlap extensively between asthma and other diseases [35, 36]. Elevated FeNO has previously been shown to have a rather high specificity for asthma, whereas its sensitivity is lower.

Table 2 Diagnostic accuracy of different combinations of threshold values of these two biomarkers (n = 2349)

Categories	Sensitivity (%)	Specificity (%)	PLR	NLR	PPV (%)	NPV (%)
FeNO > 20 ppb [†]						
B-Eos > 100 cells/ μ l*	69.71	64.25	1.9	0.5	51.31	79.70
B-Eos > 200 cells/ μ l*	56.07	81.10	3.0	0.5	61.58	77.36
B-Eos > 300 cells/ μ l*	41.83	89.93	4.2	0.6	69.18	74.10
B-Eos > 400 cells/ μ l*	31.89	93.22	4.7	0.7	71.77	71.70
B-Eos > 500 cells/ μ l*	22.57	95.55	5.1	0.8	73.25	69.55
FeNO > 30 ppb [†]						
B-Eos > 100 cells/ μ l*	58.95	80.39	3.0	0.5	61.89	78.38
B-Eos > 200 cells/ μ l*	47.42	89.63	4.6	0.6	71.19	75.93
B-Eos > 300 cells/ μ l*	35.38	94.47	6.4	0.7	77.58	73.01
B-Eos > 400 cells/ μ l*	26.97	96.28	7.3	0.8	79.67	70.93
B-Eos > 500 cells/ μ l*	19.09	97.56	7.8	0.8	80.85	69.05
FeNO > 40 ppb [†]						
B-Eos > 100 cells/ μ l*	50.98	90.38	5.3	0.5	74.12	77.33
B-Eos > 200 cells/ μ l*	41.00	94.92	8.1	0.6	81.33	74.86
B-Eos > 300 cells/ μ l*	30.59	97.29	11.3	0.7	85.92	72.18
B-Eos > 400 cells/ μ l*	23.32	98.18	12.8	0.8	87.36	70.32
B-Eos > 500 cells/ μ l*	16.51	98.80	13.8	0.8	88.16	68.65
FeNO > 50 ppb [†]						
B-Eos > 100 cells/ μ l*	43.09	93.87	7.0	0.6	79.16	75.32
B-Eos > 200 cells/ μ l*	34.66	96.76	10.7	0.7	85.25	73.27
B-Eos > 300 cells/ μ l*	25.86	98.27	15.0	0.8	89.00	71.04
B-Eos > 400 cells/ μ l*	19.72	98.84	17.0	0.8	90.16	69.50
B-Eos > 500 cells/ μ l*	13.95	99.24	18.3	0.9	90.80	68.10
FeNO > 60 ppb [†]						
B-Eos > 100 cells/ μ l*	35.31	96.09	9.0	0.7	83.00	73.33
B-Eos > 200 cells/ μ l*	28.40	97.93	13.7	0.7	88.13	71.68
B-Eos > 300 cells/ μ l*	21.19	98.90	19.2	0.8	91.23	69.90
B-Eos > 400 cells/ μ l*	16.16	99.26	21.8	0.8	92.17	68.66
B-Eos > 500 cells/ μ l*	11.43	99.51	23.5	0.9	92.69	67.53
FeNO > 70 ppb [†]						
B-Eos > 100 cells/ μ l*	28.76	97.62	12.1	0.7	86.73	71.72
B-Eos > 200 cells/ μ l*	23.13	98.74	18.4	0.8	90.86	70.39
B-Eos > 300 cells/ μ l*	17.26	99.33	25.8	0.8	93.30	68.96
B-Eos > 400 cells/ μ l*	13.16	99.55	29.2	0.9	94.04	67.96
B-Eos > 500 cells/ μ l*	9.31	99.70	31.4	0.9	94.44	67.05
FeNO > 80 ppb [†]						
B-Eos > 100 cells/ μ l*	24.26	98.35	14.7	0.8	88.83	70.62
B-Eos > 200 cells/ μ l*	19.51	99.13	22.4	0.8	92.37	69.51
B-Eos > 300 cells/ μ l*	14.56	99.54	31.4	0.9	94.43	68.31
B-Eos > 400 cells/ μ l*	11.10	99.69	35.5	0.9	95.05	67.48
B-Eos > 500 cells/ μ l*	7.85	99.79	38.3	0.9	95.39	66.72
FeNO > 90 ppb [†]						
B-Eos > 100 cells/ μ l*	19.75	98.85	17.2	0.8	90.26	69.51
B-Eos > 200 cells/ μ l*	15.89	99.39	26.1	0.8	93.38	68.62
B-Eos > 300 cells/ μ l*	11.85	99.68	36.6	0.9	95.18	67.67
B-Eos > 400 cells/ μ l*	9.04	99.78	41.4	0.9	95.72	67.00
B-Eos > 500 cells/ μ l*	6.40	99.86	44.6	0.9	96.02	66.38
FeNO > 38 ppb [‡]						
B-Eos > 203 cells/ μ l [‡]	42.18	94.41	7.6	0.6	80.31	75.14

Table 2 (continued)

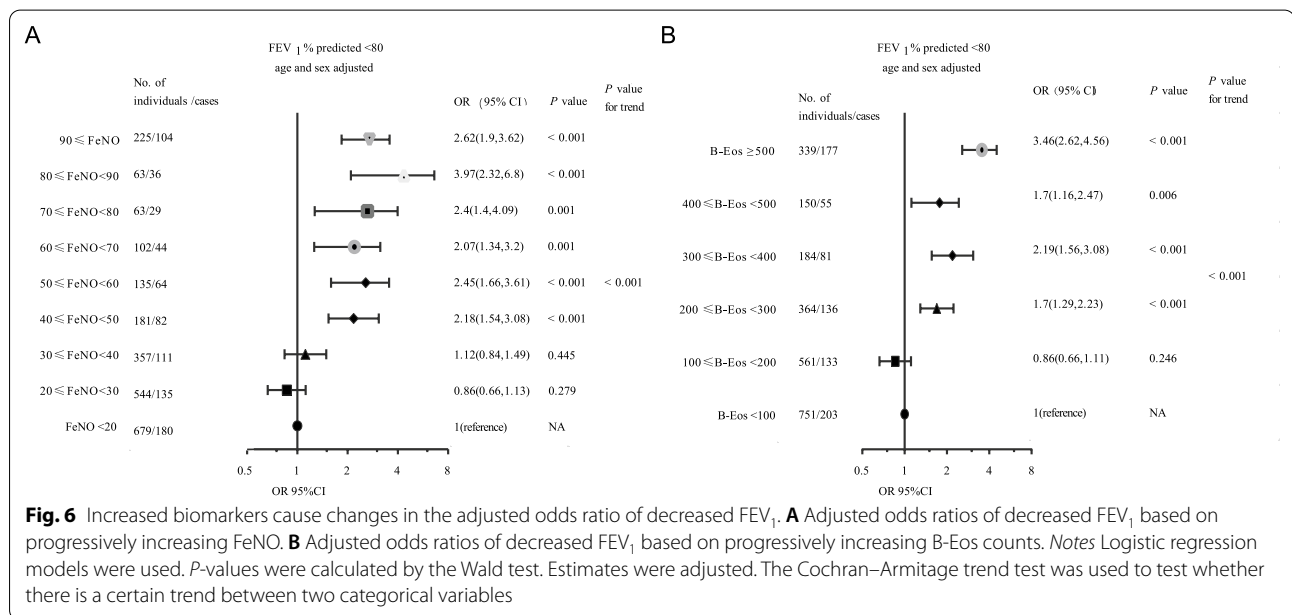
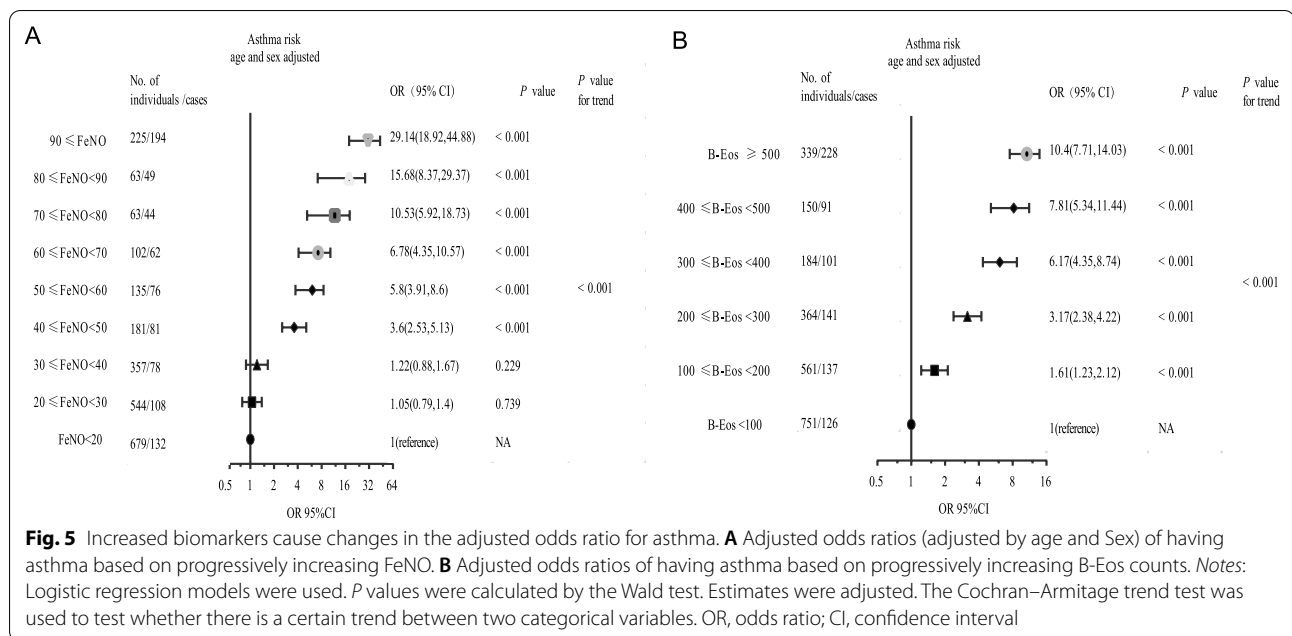
† Baseline screening value of the former biomarker
 * Progressively increasing cutoff values of the combined biomarkers
 ‡ The optimal diagnostic cutoff value for each biomarker alone



The latter is probably due to the presence of non-type 2 asthma [37]. Therefore, many guidelines recommend that FeNO should be combined with other objective evidence to identify inflammatory respiratory diseases [1, 30, 33, 38].

B-Eos count, another promising and easy-to-measure biomarker, is more attractive as a means of diagnosing asthma [6, 39]. In this study, we found that the optimal

diagnostic cutoff level was 203 cells/ μ l for B-Eos to identify asthma. Consistent with previous reports [14, 40], our data indicated that FeNO or B-Eos count alone had only moderate accuracy for diagnosing asthma, so using a single biomarker for this purpose will yield many false negatives and false positives. In all suspected asthma cases, as B-Eos count gradually increased, the risk of having FEV₁ < 80% of the predicted value significantly



increased. In addition, previous studies have demonstrated that high B-Eos counts are related to poor asthma control, risk of exacerbations, and benefits from maintenance of inhaled corticosteroids [41–43]. It should be realized that measurement of blood eosinophils can yield better risk stratification and more predictive and prognostic information in asthma [10].

Although FeNO and B-Eos are indirect measures of type 2 inflammation, these two biomarkers are regulated by different inflammatory pathways [12]. Activation of

the T2 inflammatory cascade leads to secretion of various cytokines, including interleukin-4 and -13 (IL-4, IL-13), which activate nitric oxide synthase to increase FeNO in bronchial epithelial cells. IL-5 acts on IL-5 receptor subunit α (IL5RA), causing eosinophilia [11]. Similar to a previous report by Malinovsky et al. [17], FeNO was weakly correlated with B-Eos count in this study, but our data also revealed that the correlation between FeNO and B-Eos count was stronger in asthma patients than in non-asthma patients. These results suggested that the

combination of FeNO and B-Eos count could help diagnose asthma. Since positive and negative predictive values depend on the prevalence of the disease irrespective of the sensitivity and specificity [28, 44], when we seek threshold levels for a diagnosis of asthma using both biomarkers, the goal is to achieve an ultrahigh PLR (> 10). When linking the different thresholds of these two biomarkers, the appropriate folding point is found at a FeNO of 40 ppb and a B-Eos count of 300 cells/ μ l.

Notably, our entire study population included patients with suspected early asthma who underwent the BPT and those with severe symptoms who underwent the BDT, which is more representative of suspected asthma patients in adolescents and adults. The advantage of this study was the large number of asthmatic patients who were evaluated by spirometry and standardized clinical examination. However, asthma is heterogeneous, and non-type 2 asthma is well recognized [9, 12]. Considering that asthma and chronic obstructive pulmonary disease (COPD) present with multiple overlapping phenotypes [32], it is also necessary to recognize the limitations of lung function tests in diagnosing asthma. As reported by Sano et al. [31], the overall diagnostic sensitivity of BDT for adult asthma was 0.39 and that of BPT 0.86; 5% of non-asthmatic patients had positive BPTs and BDTs. In addition, this study also had some limitations. Due to the large proportion of incomplete data, we repeated the main analysis on this incomplete data and examined the risk of selection bias. The results of these secondary analyses were similar to those of our primary analysis. Since the smoking status of the study population was unknown, we calculated the diagnostic accuracy of these two biomarkers in women (who rarely smoke in China [27]), and the results did not change significantly. This indirectly indicated that smoking status had a limited effect on the diagnostic efficiency of these two biomarkers. As this was a retrospective study, although we followed a uniform inclusion procedure, there were still potential selection biases. The atopic statuses and comorbidities of patients in this study were not fully known, which might have affected the efficiency of these two biomarkers in diagnosing asthma. These issues are worthy of further evaluation in prospective studies.

Conclusions

There was no difference in diagnostic accuracy for asthma between FeNO and B-Eos count, and the combination of these two biomarkers could slightly improve diagnostic efficacy. Patients with moderately elevated biomarkers (FeNO > 40 ppb and B-Eos > 300 cells/ μ l) could be diagnosed with asthma and avoid objective tests when such tests are not feasible.

Abbreviations

FeNO: Fractional exhaled nitric oxide; B-Eos: Blood eosinophil; BPT: Bronchial provocation test; BDT: Bronchodilation test; GINA: Global Initiative for Asthma; AUC: Area under the receiver operating characteristic curve; PLR: Positive likelihood ratio.

Supplementary Information

The online version contains supplementary material available at <https://doi.org/10.1186/s12890-021-01626-z>.

Additional file 1: Figure S1. ROC curves of biomarkers for asthma diagnosis in different categories. **(A)** The ROC curve of FeNO for asthma diagnosis when including patients with incomplete data. **(B)** Comparison of ROC curves between B-Eos count and B-Eos percentage when including patients with incomplete data. **(C)** Comparison of ROC curves of these two biomarkers in patients who underwent the bronchial provocation test. **(D)** Comparison of ROC curves of two biomarkers in patients who underwent the bronchial dilation test. **(E)** Comparison of ROC curves of these two biomarkers in women (who hardly smoke). **(F)** Comparison of ROC curves of these two biomarkers in non-obese patients (BMI < 25 kg/m²). Abbreviations: %B-Eos, percentage of blood eosinophils; BMI, body mass index. *Data were analyzed using the Hanley–McNeil non-parametric method.

Additional file 2: Figure S2. Adjusted odds ratios of having asthma or decreased FEV1 in different categories when including patients with incomplete data. **(A)** Adjusted odds ratios of having asthma based on progressively increasing FeNO. **(B)** Adjusted odds ratios of having asthma based on progressively increasing B-Eos counts. **(C)** Adjusted odds ratios of having decreased FEV1 based on progressively increasing FeNO. **(D)** Adjusted odds ratios of having decreased FEV1 based on progressively increasing B-Eos counts. *Notes:* Logistic regression models were used. P values were calculated by the Wald test. Estimates were adjusted. The Cochran–Armitage trend test was used to test whether there is a certain trend between two categorical variables. Abbreviations: OR, odds ratio; CI, confidence interval.

Additional file 3: Supplementary tables. Table S1. Sensitivity analysis between patients with or without biomarker data. **Table S2.** Diagnostic accuracy of different cutoff values of biomarkers (n = 2349). **Table S3.** Diagnostic accuracy of simultaneously elevated biomarkers. **Table S4.** Diagnostic accuracy of the combination of FeNO and B-Eos count for asthma in randomly selected verification cohorts.

Acknowledgements

We thank Dr. Youming Zhang from the National Heart and Lung Institute, Imperial College London, UK; and Dr. Neil Barnes from the William Harvey Research Institute, London, UK for critically reading and editing the manuscript. Thanks to Dr. Xin Yao from the First Affiliated Hospital of Nanjing Medical University, China, for guidance on statistical analysis in this study. We thank LetPub (www.letpub.com) for its linguistic assistance during the preparation of this manuscript.

Authors' contributions

Study design: YH, HYC. Data collection and study execution: MC, WHL, CG, NNZ, NFN, ZYL, GQY, and SH. Data cleaning and verification: RH and YBW. Statistical analysis and interpretation: JHL and LL. Manuscript writing: JHL, HYC, LL and YH. All authors have read and approved the final manuscript.

Funding

This study was supported by a grant from the Training Plan of Clinical Medical Scientific Research Talents of Army Medical University (No. 2019XLC2019).

Availability of data and materials

The datasets used and/or analyzed during the current study are available from the corresponding author upon reasonable request.

Declarations

Ethical approval and consent to participate

The Ethics Committee of Daping Hospital approved our study protocol and waived written informed consent from patients as it was a retrospective study (Approval No. 2019–79). Patient confidentiality was maintained, and all work was carried out in accordance with the Declaration of Helsinki. No administrative permissions were required to access the original data.

Consent for publication

Not applicable.

Competing interests

The authors declare that they have no conflicts of interest.

Author details

¹Department of Respiratory Medicine, Daping Hospital, Army Medical University, 10# Changjiang Branch Road, Chongqing 400042, China. ²Department of Cardiology, Daping Hospital, Army Medical University, Chongqing 400042, China. ³Department of Clinical Laboratory Medicine, Daping Hospital, Army Medical University, Chongqing 400042, China.

Received: 6 January 2021 Accepted: 2 August 2021

Published online: 09 August 2021

References

- 2020 GINA Report, Global Strategy for Asthma Management and Prevention. 2020. <https://ginasthma.org/> (Accessed Dec 1, 2020).
- Papi A, Brightling C, Pedersen SE, Reddel HK. Asthma. *Lancet*. 2018;391(10122):783–800.
- Huang K, Yang T, Xu J, Yang L, Zhao J, Zhang X, Bai C, Kang J, Ran P, Shen H, et al. Prevalence, risk factors, and management of asthma in China: a national cross-sectional study. *The Lancet*. 2019;394(10196):407–18.
- Kavanagh J, Jackson DJ, Kent BD. Over- and under-diagnosis in asthma. *Breathe (Sheff)*. 2019;15(1):e20–7.
- Aaron SD, Boulet LP, Reddel HK, Gershon AS. Underdiagnosis and overdiagnosis of asthma. *Am J Respir Crit Care Med*. 2018;198(8):1012–20.
- Saglani S, Menzie-Gow AN. Approaches to asthma diagnosis in children and adults. *Front Pediatr*. 2019;7:148.
- Woodruff PG, Modrek B, Choy DF, Jia G, Abbas AR, Ellwanger A, Koth LL, Aron JR, Fahy JV. T-helper type 2-driven inflammation defines major subphenotypes of asthma. *Am J Respir Crit Care Med*. 2009;180(5):388–95.
- Wenzel SE. Asthma phenotypes: the evolution from clinical to molecular approaches. *Nat Med*. 2012;18(5):716–25.
- Fitzpatrick AM, Chipps BE, Holguin F, Woodruff PG. T2-“low” asthma: overview and management strategies. *J Allergy Clin Immunol Pract*. 2020;8(2):452–63.
- Pavord ID. Blood eosinophil-directed management of airway disease. The past, present, and future. *Am J Respir Crit Care Med*. 2020;202(5):637–9.
- Barnes PJ. Targeting cytokines to treat asthma and chronic obstructive pulmonary disease. *Nat Rev Immunol*. 2018;18(7):454–66.
- Pavord ID, Beasley R, Agusti A, Anderson GP, Bel E, Brusselle G, Cullinan P, Custovic A, Ducharme FM, Fahy JV, et al. After asthma: redefining airway diseases. *The Lancet*. 2018;391(10118):350–400.
- Aron JR, Izuwara K. Asthma biomarkers: what constitutes a ‘gold standard’? *Thorax*. 2015;70(2):105–7.
- Korevaar DAD, Westerhof GAM, Wang JM, Cohen JFP, Spijker RM, Sterk PJJ, Bel EHP, Bossuyt PMPM. Diagnostic accuracy of minimally invasive markers for detection of airway eosinophilia in asthma: a systematic review and meta-analysis. *Lancet Respir Med*. 2015;3(4):290–300.
- van Bragt J, Vijverberg S, Weersink E, Richards LB, Neerinx AH, Sterk PJ, Bel E, Maitland-van DZA. Blood biomarkers in chronic airways diseases and their role in diagnosis and management. *Expert Rev Respir Med*. 2018;12(5):361–74.
- Shrimanker R, Keene O, Hynes G, Wenzel S, Yancey S, Pavord ID. Prognostic and predictive value of blood eosinophil count, fractional exhaled nitric oxide and their combination in severe asthma: a post-hoc analysis. *Am J Respir Crit Care Med*. 2019;200(10):1308–12.
- Malinovschi A, Fonseca JA, Jacinto T, Alving K, Janson C. Exhaled nitric oxide levels and blood eosinophil counts independently associate with wheeze and asthma events in National Health and Nutrition Examination Survey subjects. *J Allergy Clin Immunol*. 2013;132(4):821–827.e825.
- Çolak Y, Afzal S, Nordestgaard BG, Marott JL, Lange P. Combined value of exhaled nitric oxide and blood eosinophils in chronic airway disease: the Copenhagen General Population Study. *Eur Respir J*. 2018;52(2):1800616.
- Kharitonov SA, Gonio F, Kelly C, Meah S, Barnes PJ. Reproducibility of exhaled nitric oxide measurements in healthy and asthmatic adults and children. *Eur Respir J*. 2003;21(3):433–8.
- Malinovschi A, Janson C, Borres M, Alving K. Simultaneously increased fraction of exhaled nitric oxide levels and blood eosinophil counts relate to increased asthma morbidity. *J Allergy Clin Immunol*. 2016;138(5):1301–1308.e1302.
- Mogensen I, Alving K, Jacinto T, Fonseca J, Janson C, Malinovschi A. Simultaneously elevated FeNO and blood eosinophils relate to asthma morbidity in asthmatics from NHANES 2007–12. *Clin Exp Allergy*. 2018;48(8):935–43.
- Deykin A, Massaro AF, Coulston E, Drazen JM, Israel E. Exhaled nitric oxide following repeated spirometry or repeated plethysmography in healthy individuals. *Am J Respir Crit Care Med*. 2000;161(4 Pt 1):1237–40.
- Horváth I, Barnes PJ, Loukides S, Sterk PJ, Högman M, Olin A-C, Amann A, Antus B, Baraldi E, Bikov A, et al. A European Respiratory Society technical standard: exhaled biomarkers in lung disease. *Eur Respir J*. 2017;49(4):1600965.
- Miller MR. Standardisation of spirometry. *Eur Respir J*. 2005;26(2):319–38.
- Schulze J, Rosewich M, Riemer C, Dressler M, Rose MA, Zielen S. Methacholine challenge—comparison of an ATS protocol to a new rapid single concentration technique. *Respir Med*. 2009;103(12):1898–903.
- Bardou P, Mariette J, Escudie F, Djemiel C, Klopp C. Jvonn: an interactive Venn diagram viewer. *BMC Bioinformatics*. 2014;15:293.
- Wang M, Luo X, Xu S, Liu W, Ding F, Zhang X, Wang L, Liu J, Hu J, Wang W. Trends in smoking prevalence and implication for chronic diseases in China: serial national cross-sectional surveys from 2003 to 2013. *Lancet Respir Med*. 2019;7(1):35–45.
- Deeks JJ, Altman DG. Diagnostic tests 4: likelihood ratios. *BMJ*. 2004;329(7458):168–9.
- Coates AL, Wanger J, Cockcroft DW, Culver BH, Carlsen K-H, Diamant Z, Gauvreau G, Hall GL, Hallstrand TS, Horvath I, et al. ERS technical standard on bronchial challenge testing: general considerations and performance of methacholine challenge tests. *Eur Respir J*. 2017;49(5):1601526.
- García-Marcos L, Edwards J, Kennington E, Aurora P, Baraldi E, Carraro S, Gappa M, Louis R, Moreno-Galdo A, Peroni DG, et al. Priorities for future research into asthma diagnostic tools: A PAN-EU consensus exercise from the European asthma research innovation partnership (EARIP). *Clin Exp Allergy*. 2018;48(2):104–20.
- Sano H, Tomita K, Sano A, Saeki S, Nishikawa Y, Nishiyama O, Iwanaga T, Tohda Y. Accuracy of objective tests for diagnosing adult asthma in symptomatic patients: a systematic literature review and hierarchical Bayesian latent-class meta-analysis. *Allergol Int*. 2019;68(2):191–8.
- Janson C, Malinovschi A, Amaral A, Accordini S, Bousquet J, Buist AS, Canonica GW, Dahlen B, Garcia-Aymerich J, Gnatiuc L, et al. Bronchodilator reversibility in asthma and COPD: findings from three large population studies. *Eur Respir J*. 2019;54(3):1900561.
- Guideline N. Asthma: diagnosis, monitoring and chronic asthma management. 2017. www.nice.org.uk/guidance/ng80. (accessed Dec 1, 2020).
- Matsunaga K, Kuwahira I, Hanaoka M, Saito J, Tsuburai T, Fukunaga K, Matsumoto H, Sugiura H, Ichinose M. Japanese Respiratory Society Assembly on Pulmonary P: An official JRS statement: The principles of fractional exhaled nitric oxide (FeNO) measurement and interpretation of the results in clinical practice. *Respir Investig*. 2021;59(1):34–52.
- Matsunaga K, Hirano T, Akamatsu K, Koarai A, Sugiura H, Minakata Y, Ichinose M. Exhaled nitric oxide cutoff values for asthma diagnosis according to rhinitis and smoking status in Japanese subjects. *Allergol Int*. 2011;60(3):331–7.
- Cordeiro D, Rudolphus A, Snoey E, Braunstahl GJ. Utility of nitric oxide for the diagnosis of asthma in an allergy clinic population. *Allergy Asthma Proc*. 2011;32(2):119–26.
- Karrasch S, Linde K, Rucker G, Sommer H, Karsch-Völk M, Kleijnen J, Jörres RA, Schneider A. Accuracy of FENO for diagnosing asthma: a systematic review. *Thorax*. 2017;72(2):109–16.

38. Kuo CR, Spears M, Haughney J, Smith A, Miller J, Bradshaw T, Murray L, Williamson P, Lipworth B. Scottish consensus statement on the role of FeNO in adult asthma. *Respir Med*. 2019;155:54–7.
39. Price DB, Rigazio A, Campbell JD, Bleecker ER, Corrigan CJ, Thomas M, Wenzel SE, Wilson AM, Small MB, Gopalan G, et al. Blood eosinophil count and prospective annual asthma disease burden: a UK cohort study. *Lancet Respir Med*. 2015;3(11):849–58.
40. Wang Z, Pianosi PT, Keogh KA, Zaiem F, Alsawas M, Alahdab F, Almasri J, Mohammed K, Larrea-Mantilla L, Farah W, et al. The diagnostic accuracy of fractional exhaled nitric oxide testing in asthma: a systematic review and meta-analyses. *Mayo Clin Proc*. 2018;93(2):191–8.
41. Zeiger RS, Schatz M, Li Q, Chen W, Khattry DB, Gossage D, Tran TN. High blood eosinophil count is a risk factor for future asthma exacerbations in adult persistent asthma. *J Allergy Clin Immunol Pract*. 2014;2(6):741–50.
42. Nadif R, Siroux V, Boudier A, le Moual N, Just J, Gormand F, Pison C, Matran R, Pin I. Blood granulocyte patterns as predictors of asthma phenotypes in adults from the EGEEA study. *Eur Respir J*. 2016;48(4):1040–51.
43. Pavord ID, Holliday M, Reddel HK, Braithwaite I, Ebmeier S, Hancox RJ, Harrison T, Houghton C, Oldfield K, Papi A, et al. Predictive value of blood eosinophils and exhaled nitric oxide in adults with mild asthma: a pre-specified subgroup analysis of an open-label, parallel-group, randomised controlled trial. *Lancet Resp Med*. 2020;8(7):671–80.
44. Habibzadeh F, Habibzadeh P. The likelihood ratio and its graphical representation. *Biochemia medica*. 2019;29(2):193–9.

Publisher's Note

Springer Nature remains neutral with regard to jurisdictional claims in published maps and institutional affiliations.

Ready to submit your research? Choose BMC and benefit from:

- fast, convenient online submission
- thorough peer review by experienced researchers in your field
- rapid publication on acceptance
- support for research data, including large and complex data types
- gold Open Access which fosters wider collaboration and increased citations
- maximum visibility for your research: over 100M website views per year

At BMC, research is always in progress.

Learn more biomedcentral.com/submissions

